

Data Path : Z:\pestpcbsrv\HPCHEM1\ECD\_Q\Data\PQ072023\  
 Data File : PQ062466.D  
 Signal(s) : Signal #1: ECD1A.ch Signal #2: ECD2B.ch  
 Acq On : 20 Jul 2023 23:38  
 Operator : YP\AJ  
 Sample : AR1254CCC500  
 Misc :  
 ALS Vial : 6 Sample Multiplier: 1

Instrument :  
 ECD\_Q  
 ClientSampleId :  
 AR1254CCC500

Integration File signal 1: autoint1.e  
 Integration File signal 2: autoint2.e  
 Quant Time: Jul 21 06:05:54 2023  
 Quant Method : Z:\pestpcbsrv\HPCHEM1\ECD\_Q\Method\PQ070123.M  
 Quant Title : GC EXTRACTABLES  
 QLast Update : Tue Jul 04 05:32:27 2023  
 Response via : Initial Calibration  
 Integrator: ChemStation

Volume Inj. : 2 µl  
 Signal #1 Phase : ZB-MR1 Signal #2 Phase: ZB-MR2  
 Signal #1 Info : 30Mx0.32mmx 0.50µ Signal #2 Info : 30M x 0.32mm x 0.25µm

Compound	RT#1	RT#2	Resp#1	Resp#2	ng/ml	ng/ml
-----						
System Monitoring Compounds						
1) SA Tetrachlo...	3.402	2.755	239.1E6	129.8E6	49.018	51.724
2) SA Decachlor...	8.582	7.524	185.7E6	167.9E6	51.110	50.392
Target Compounds						
26) L6 AR-1254-1	5.325	4.511	90626613	80408387	487.708	497.999
27) L6 AR-1254-2	5.542	4.658	141.9E6	73343140	488.261	498.172
28) L6 AR-1254-3	5.896	5.039	151.1E6	116.4E6	491.829	497.929
29) L6 AR-1254-4	6.180	5.266	115.0E6	79028426	495.297	518.511
30) L6 AR-1254-5	6.593	5.672	128.5E6	118.0E6	500.297	511.382
-----						

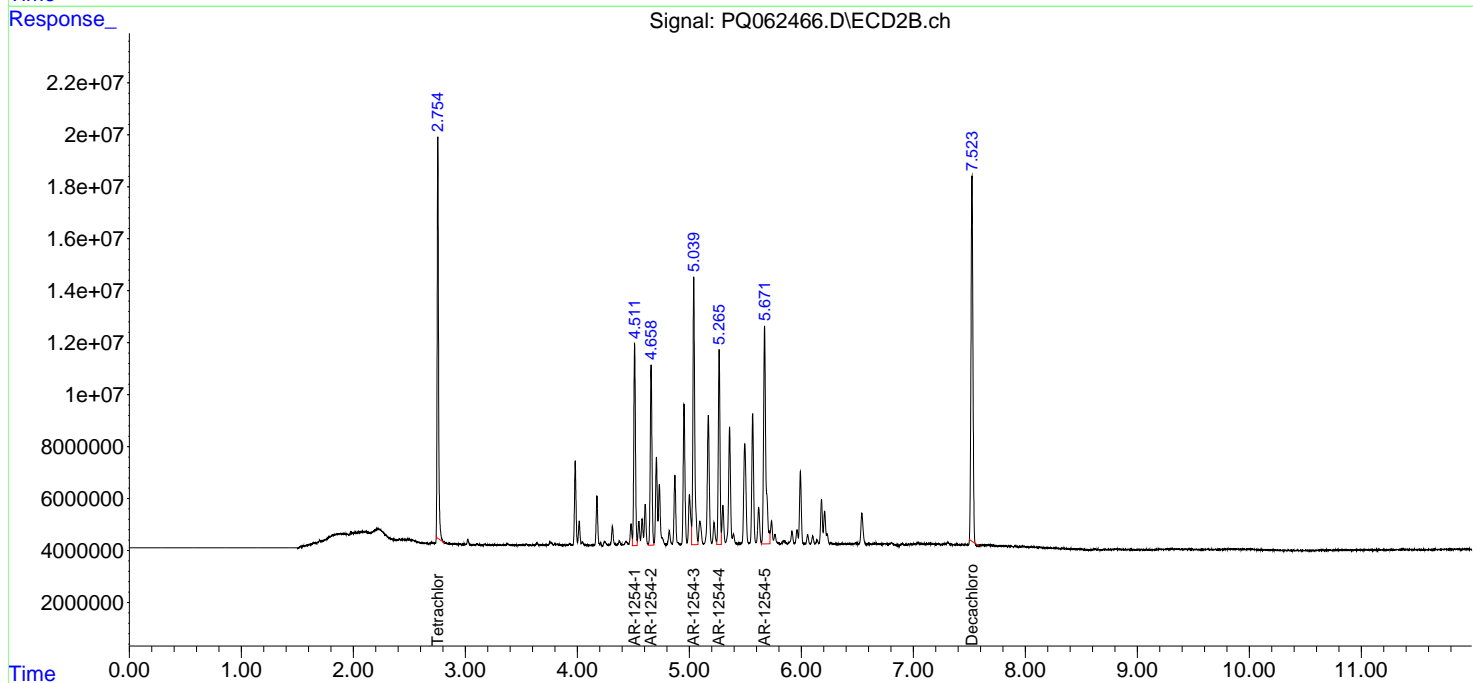
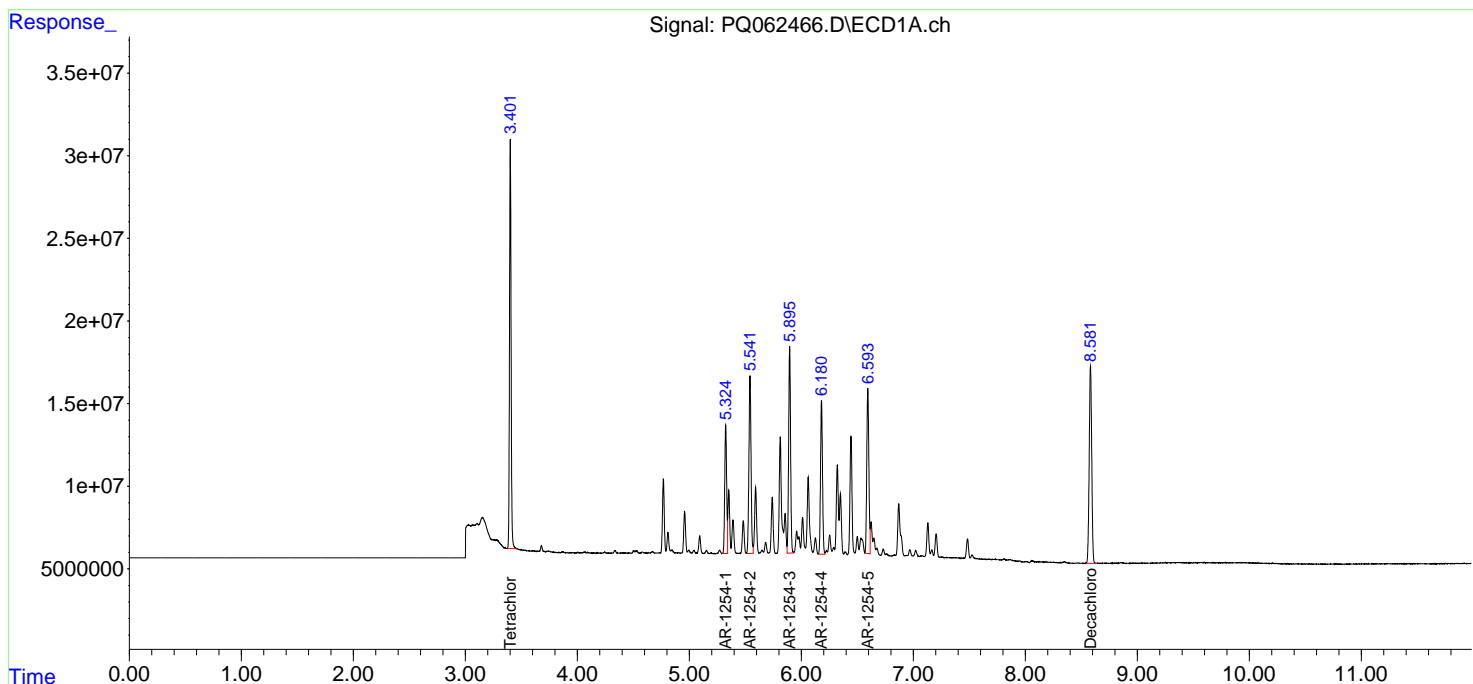
(f)=RT Delta > 1/2 Window (#)=Amounts differ by > 25% (m)=manual int.

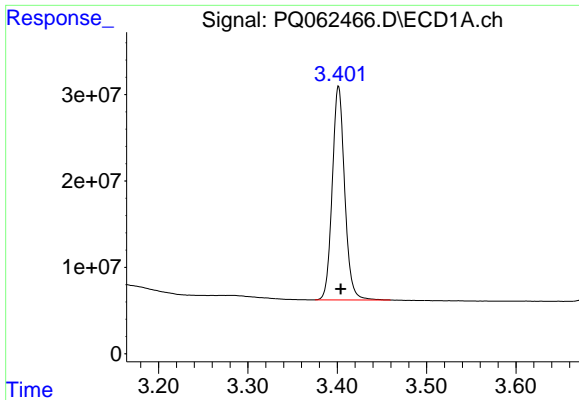
Data Path : Z:\pestpcbsrv\HPCHEM1\ECD\_Q\Data\PQ072023\  
 Data File : PQ062466.D  
 Signal(s) : Signal #1: ECD1A.ch Signal #2: ECD2B.ch  
 Acq On : 20 Jul 2023 23:38  
 Operator : YP\AJ  
 Sample : AR1254CCC500  
 Misc :  
 ALS Vial : 6 Sample Multiplier: 1

Instrument :  
 ECD\_Q  
 ClientSampleId :  
 AR1254CCC500

Integration File signal 1: autoint1.e  
 Integration File signal 2: autoint2.e  
 Quant Time: Jul 21 06:05:54 2023  
 Quant Method : Z:\pestpcbsrv\HPCHEM1\ECD\_Q\Method\PQ070123.M  
 Quant Title : GC EXTRACTABLES  
 QLast Update : Tue Jul 04 05:32:27 2023  
 Response via : Initial Calibration  
 Integrator: ChemStation

Volume Inj. : 2 µl  
 Signal #1 Phase : ZB-MR1 Signal #2 Phase: ZB-MR2  
 Signal #1 Info : 30Mx0.32mmx 0.50µ Signal #2 Info : 30M x 0.32mm x 0.25µm

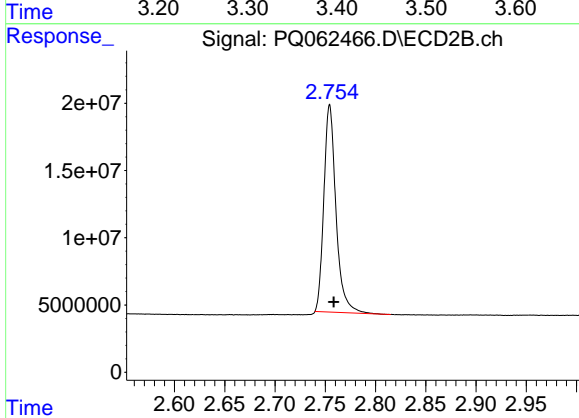




#1 Tetrachloro-m-xylene

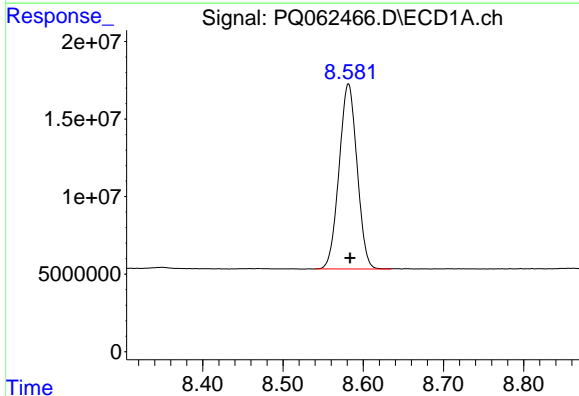
R.T.: 3.402 min  
 Delta R.T.: -0.002 min  
 Response: 239120448  
 Conc: 49.02 ng/ml

Instrument :  
 ECD\_Q  
 ClientSampleId :  
 AR1254CCC500



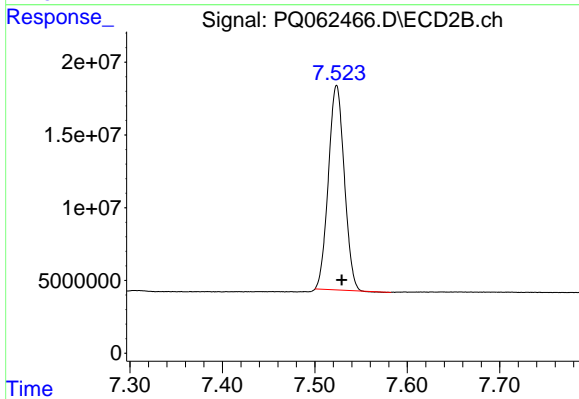
#1 Tetrachloro-m-xylene

R.T.: 2.755 min  
 Delta R.T.: -0.004 min  
 Response: 129781780  
 Conc: 51.72 ng/ml



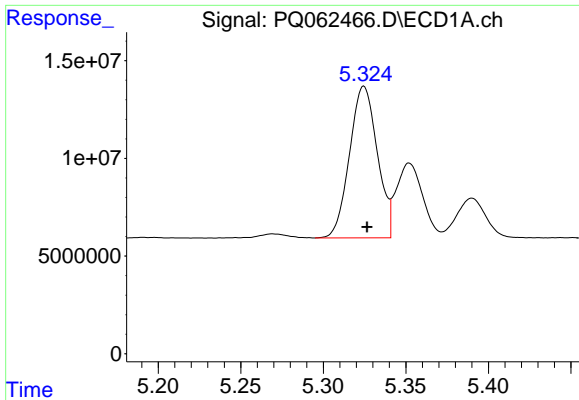
#2 Decachlorobiphenyl

R.T.: 8.582 min  
 Delta R.T.: -0.002 min  
 Response: 185670377  
 Conc: 51.11 ng/ml



#2 Decachlorobiphenyl

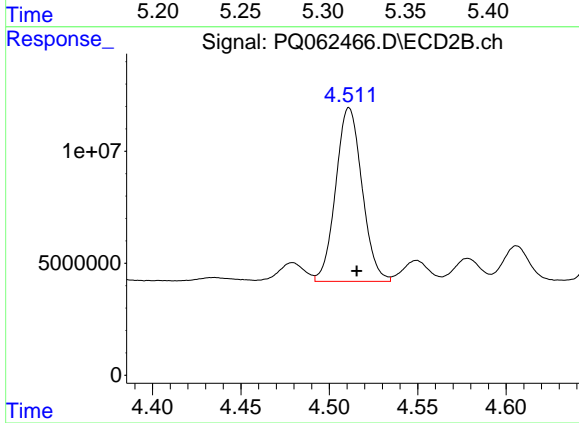
R.T.: 7.524 min  
 Delta R.T.: -0.006 min  
 Response: 167913759  
 Conc: 50.39 ng/ml



#26 AR-1254-1

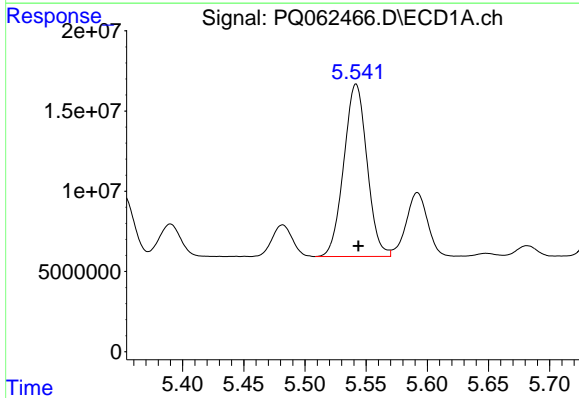
R.T.: 5.325 min  
Delta R.T.: -0.002 min  
Response: 90626613  
Conc: 487.71 ng/ml

Instrument :  
ECD\_Q  
ClientSampleId :  
AR1254CCC500



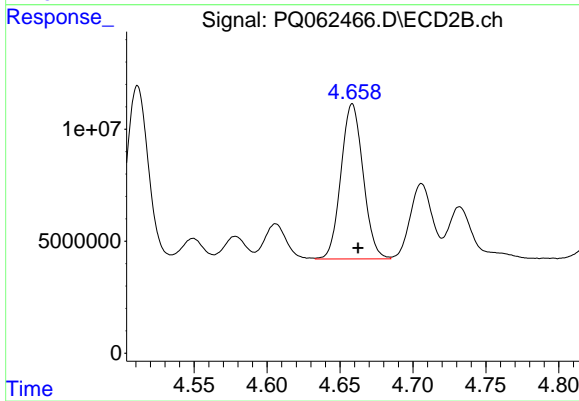
#26 AR-1254-1

R.T.: 4.511 min  
Delta R.T.: -0.004 min  
Response: 80408387  
Conc: 498.00 ng/ml



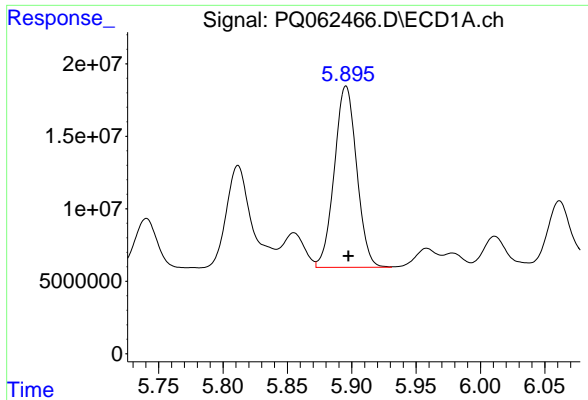
#27 AR-1254-2

R.T.: 5.542 min  
Delta R.T.: -0.002 min  
Response: 141943954  
Conc: 488.26 ng/ml



#27 AR-1254-2

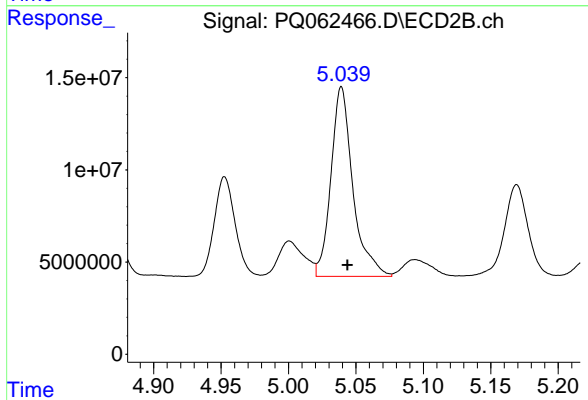
R.T.: 4.658 min  
Delta R.T.: -0.004 min  
Response: 73343140  
Conc: 498.17 ng/ml



#28 AR-1254-3

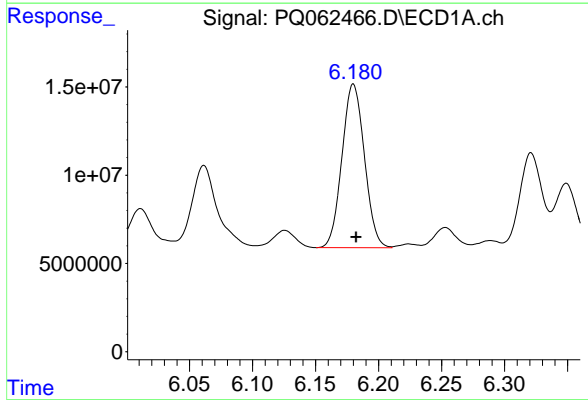
R.T.: 5.896 min  
 Delta R.T.: -0.002 min  
 Response: 151060341  
 Conc: 491.83 ng/ml

Instrument :  
 ECD\_Q  
 ClientSampleId :  
 AR1254CCC500



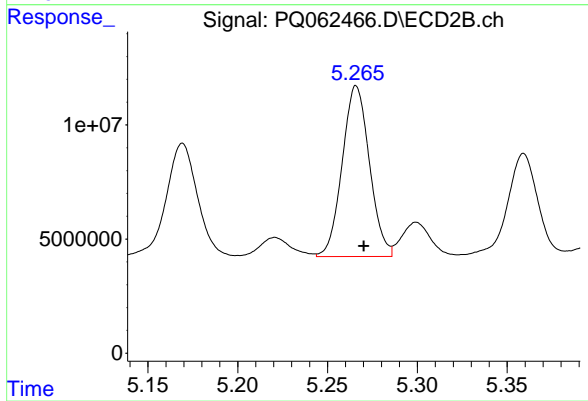
#28 AR-1254-3

R.T.: 5.039 min  
 Delta R.T.: -0.004 min  
 Response: 116366572  
 Conc: 497.93 ng/ml



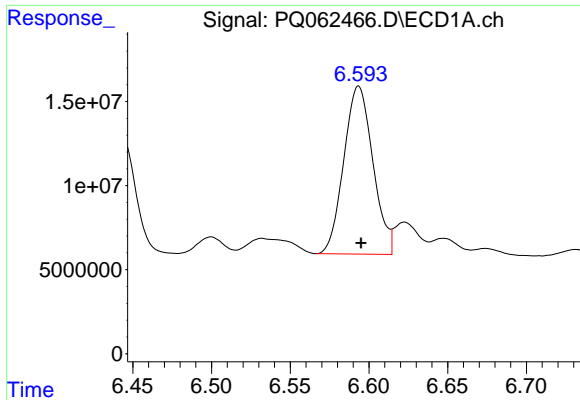
#29 AR-1254-4

R.T.: 6.180 min  
 Delta R.T.: -0.002 min  
 Response: 115004620  
 Conc: 495.30 ng/ml



#29 AR-1254-4

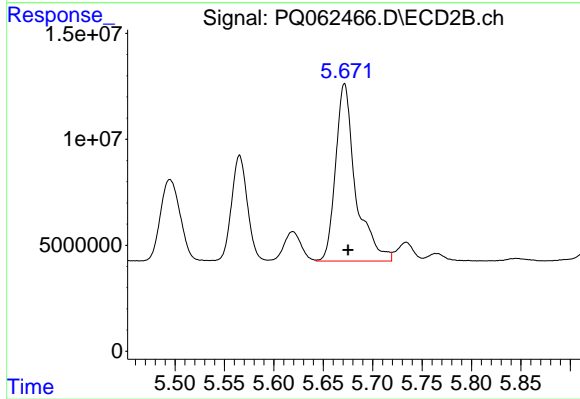
R.T.: 5.266 min  
 Delta R.T.: -0.004 min  
 Response: 79028426  
 Conc: 518.51 ng/ml



#30 AR-1254-5

R.T.: 6.593 min  
Delta R.T.: -0.002 min  
Response: 128511479  
Conc: 500.30 ng/ml

Instrument :  
ECD\_Q  
ClientSampleId :  
AR1254CCC500



#30 AR-1254-5

R.T.: 5.672 min  
Delta R.T.: -0.003 min  
Response: 118025016  
Conc: 511.38 ng/ml