

Data Path : Z:\pestpcbsrv\HPCHEM1\ECD_Q\Data\PQ072220\
 Data File : PQ048825.D
 Signal(s) : Signal #1: ECD1A.ch Signal #2: ECD2B.ch
 Acq On : 22 Jul 2020 14:13
 Operator : DD\AJ
 Sample : L3368-01
 Misc :
 ALS Vial : 14 Sample Multiplier: 1

Instrument :
 ECD_Q
ClientSampleId :
 20200435-COMPOSITE

Integration File signal 1: autoint1.e
 Integration File signal 2: autoint2.e
 Quant Time: Jul 22 16:50:31 2020
 Quant Method : Z:\pestpcbsrv\HPCHEM1\ECD_Q\Method\PQ071620.M
 Quant Title : GC EXTRACTABLES
 QLast Update : Thu Jul 16 05:42:31 2020
 Response via : Initial Calibration
 Integrator: ChemStation

Volume Inj. : 2 µl
 Signal #1 Phase : ZB-MR1 Signal #2 Phase: ZB-MR2
 Signal #1 Info : 30Mx0.32mmx 0.50µ Signal #2 Info : 30M x 0.32mm x 0.25µm

Compound	RT#1	RT#2	Resp#1	Resp#2	ng/ml	ng/ml

System Monitoring Compounds						
1) SA Tetrachlo...	5.266	4.281	231.2E6	113.5E6	27.374	27.074
2) SA Decachlor...	11.521	9.650	241.4E6	118.6E6	23.441	22.005

Target Compounds

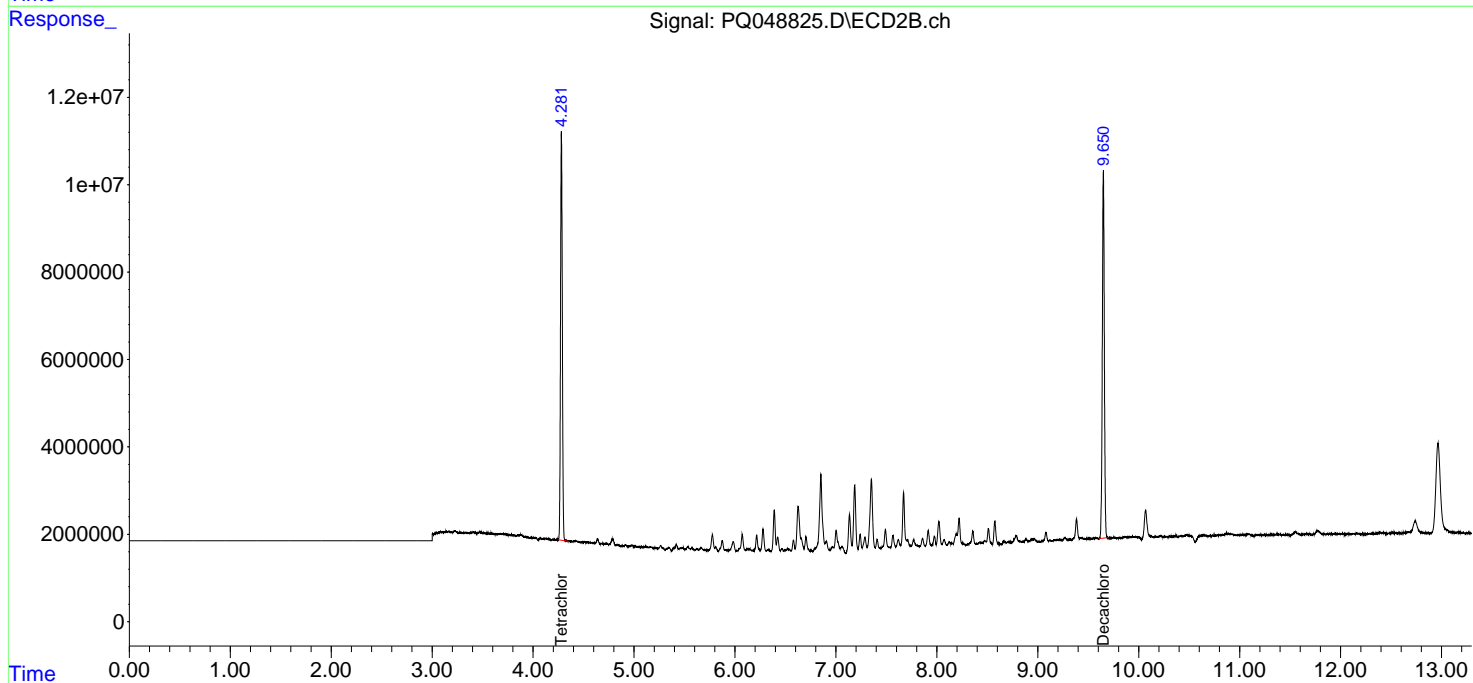
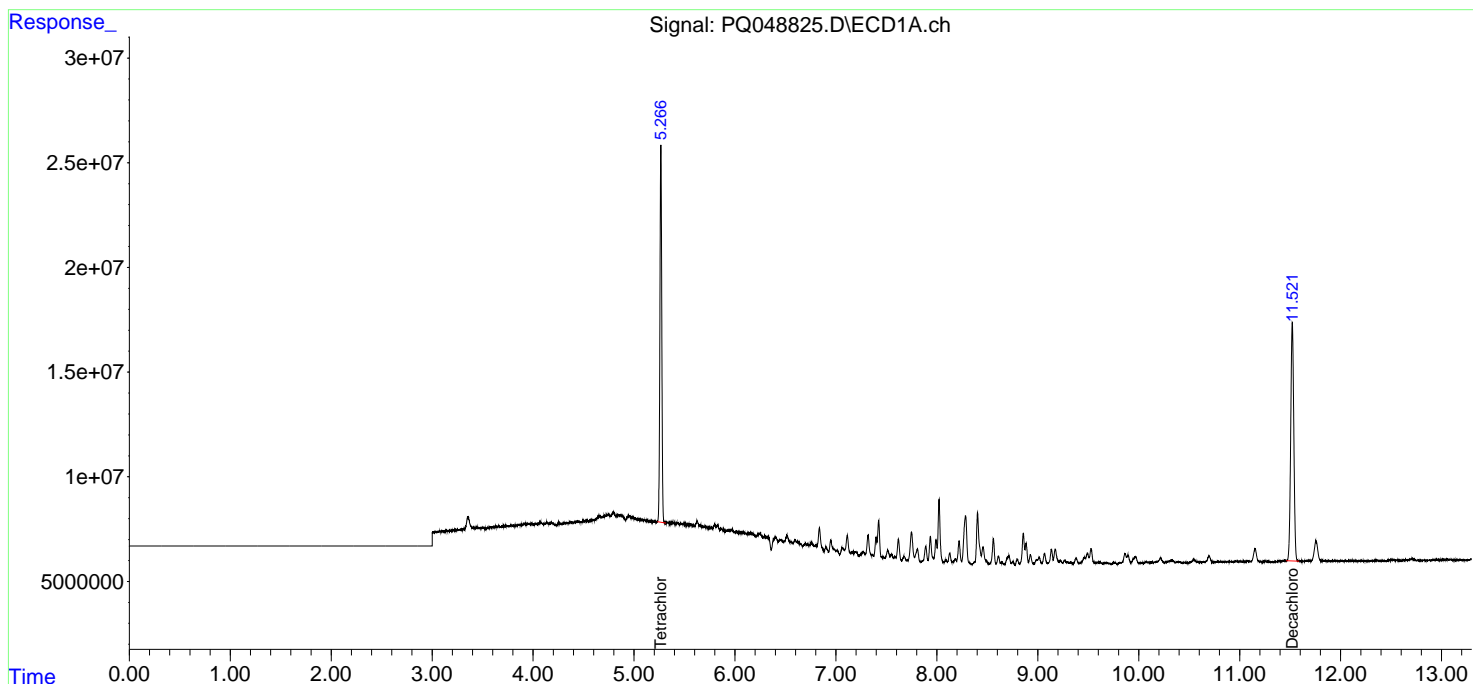
(f)=RT Delta > 1/2 Window (#)=Amounts differ by > 25% (m)=manual int.

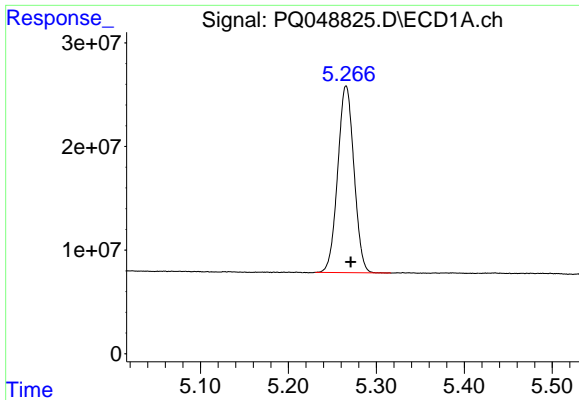
Data Path : Z:\pestpcbsrv\HPCHEM1\ECD_Q\Data\PQ072220\
 Data File : PQ048825.D
 Signal(s) : Signal #1: ECD1A.ch Signal #2: ECD2B.ch
 Acq On : 22 Jul 2020 14:13
 Operator : DD\AJ
 Sample : L3368-01
 Misc :
 ALS Vial : 14 Sample Multiplier: 1

Instrument :
 ECD_Q
ClientSampleId :
 20200435-COMPOSITE

Integration File signal 1: autoint1.e
 Integration File signal 2: autoint2.e
 Quant Time: Jul 22 16:50:31 2020
 Quant Method : Z:\pestpcbsrv\HPCHEM1\ECD_Q\Method\PQ071620.M
 Quant Title : GC EXTRACTABLES
 QLast Update : Thu Jul 16 05:42:31 2020
 Response via : Initial Calibration
 Integrator: ChemStation

Volume Inj. : 2 µl
 Signal #1 Phase : ZB-MR1 Signal #2 Phase: ZB-MR2
 Signal #1 Info : 30Mx0.32mmx 0.50µ Signal #2 Info : 30M x 0.32mm x 0.25µm

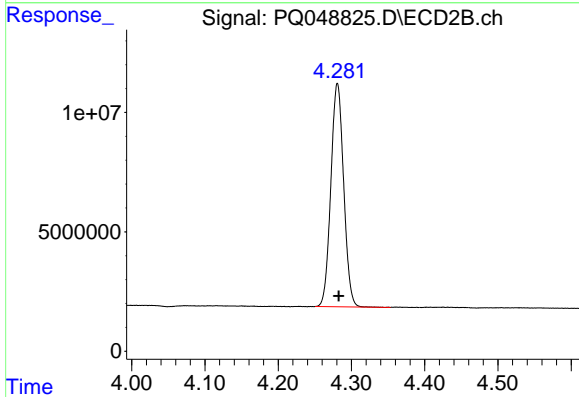




#1 Tetrachloro-m-xylene

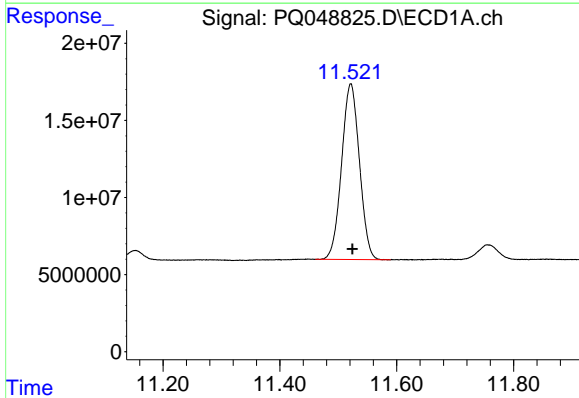
R.T.: 5.266 min
 Delta R.T.: -0.005 min
 Response: 231248032
 Conc: 27.37 ng/ml

Instrument :
 ECD_Q
 ClientSampleId :
 20200435-COMPOSITE



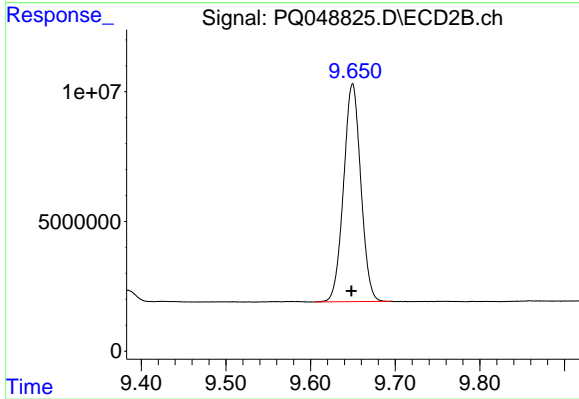
#1 Tetrachloro-m-xylene

R.T.: 4.281 min
 Delta R.T.: -0.002 min
 Response: 113537697
 Conc: 27.07 ng/ml



#2 Decachlorobiphenyl

R.T.: 11.521 min
 Delta R.T.: -0.003 min
 Response: 241388571
 Conc: 23.44 ng/ml



#2 Decachlorobiphenyl

R.T.: 9.650 min
 Delta R.T.: 0.001 min
 Response: 118564952
 Conc: 22.00 ng/ml