

Data Path : Z:\pestpcbsrv\HPCHEM1\ECD_Q\Data\PQ072220\
 Data File : PQ048826.D
 Signal(s) : Signal #1: ECD1A.ch Signal #2: ECD2B.ch
 Acq On : 22 Jul 2020 14:29
 Operator : DD\AJ
 Sample : L3370-03
 Misc :
 ALS Vial : 15 Sample Multiplier: 1

Instrument :
 ECD_Q
 ClientSampleId :
 TP-3-S

Integration File signal 1: autoint1.e
 Integration File signal 2: autoint2.e
 Quant Time: Jul 22 16:50:56 2020
 Quant Method : Z:\pestpcbsrv\HPCHEM1\ECD_Q\Method\PQ071620.M
 Quant Title : GC EXTRACTABLES
 QLast Update : Thu Jul 16 05:42:31 2020
 Response via : Initial Calibration
 Integrator: ChemStation

Volume Inj. : 2 µl
 Signal #1 Phase : ZB-MR1 Signal #2 Phase: ZB-MR2
 Signal #1 Info : 30Mx0.32mmx 0.50µ Signal #2 Info : 30M x 0.32mm x 0.25µm

Compound	RT#1	RT#2	Resp#1	Resp#2	ng/ml	ng/ml

System Monitoring Compounds						
1) SA Tetrachlo...	5.266	4.281	218.2E6	110.0E6	25.834	26.224
2) SA Decachlor...	11.520	9.649	207.9E6	106.9E6	20.193	19.837

Target Compounds

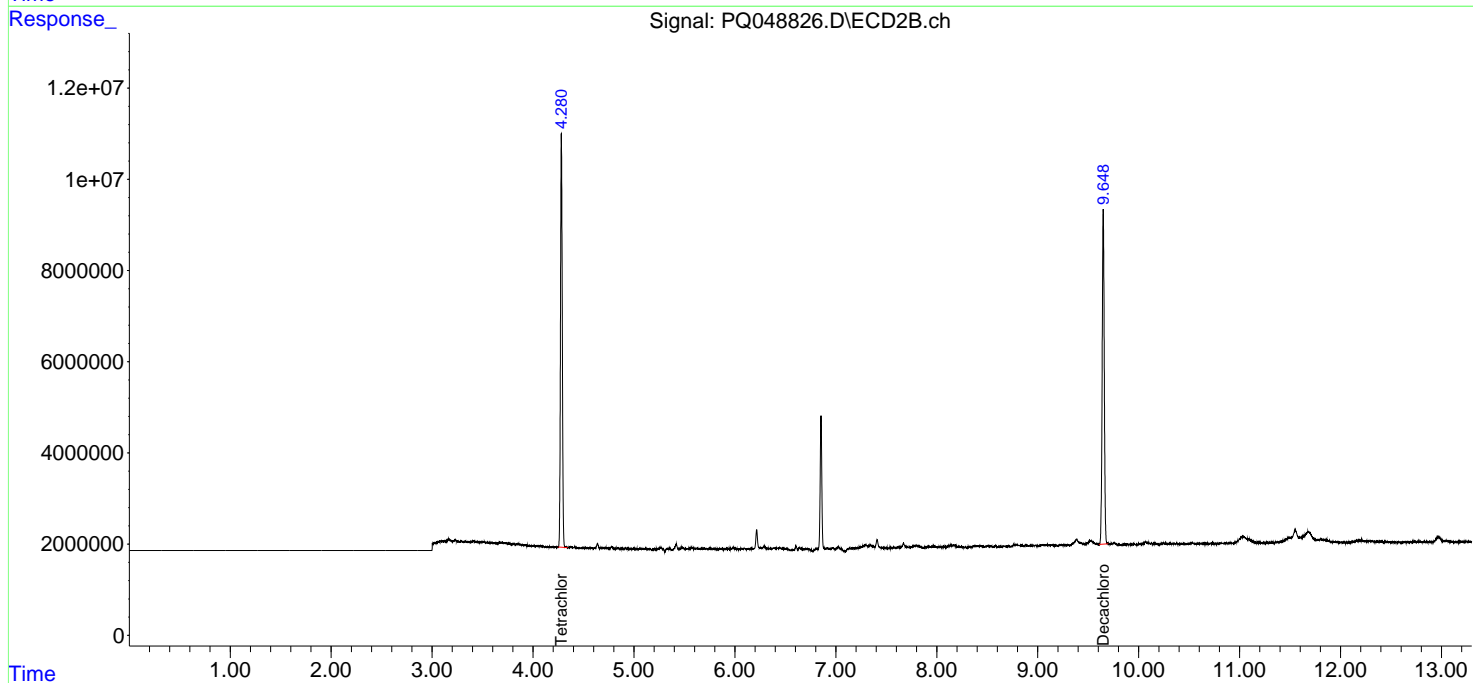
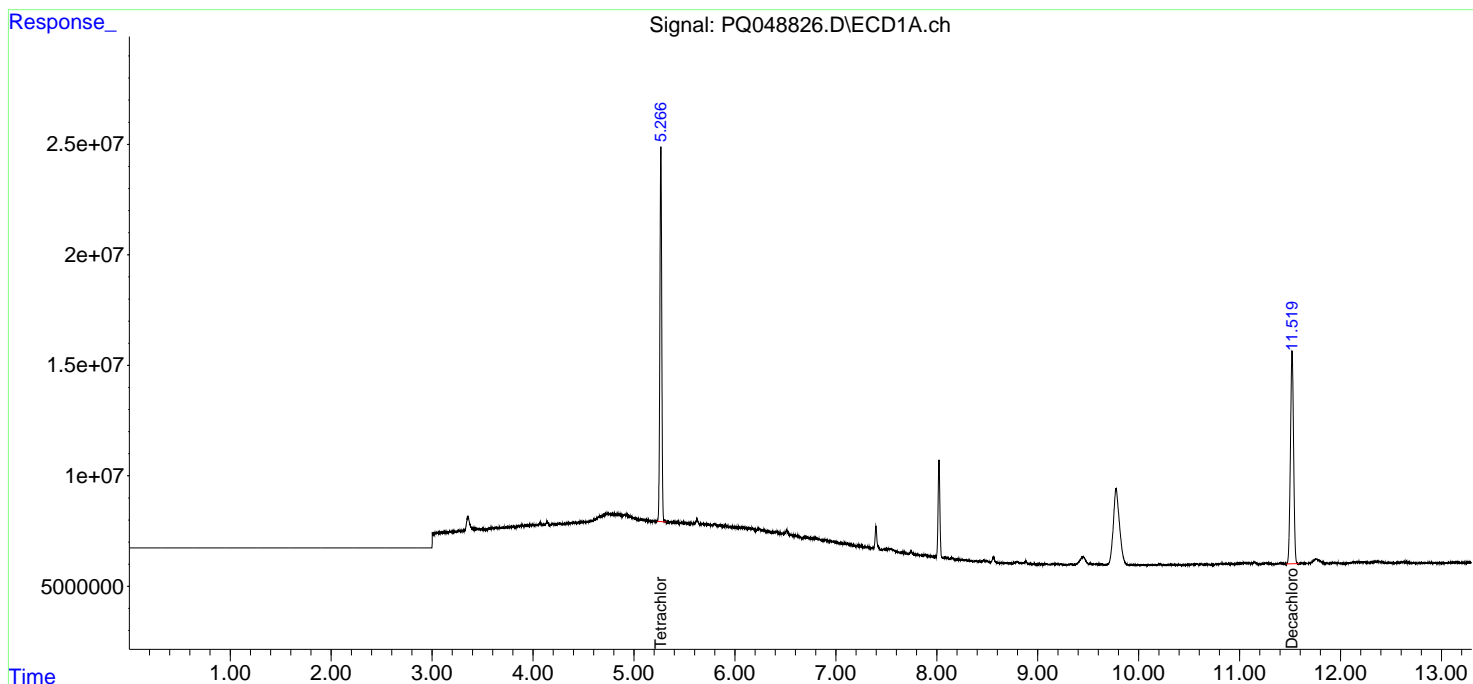
(f)=RT Delta > 1/2 Window (#)=Amounts differ by > 25% (m)=manual int.

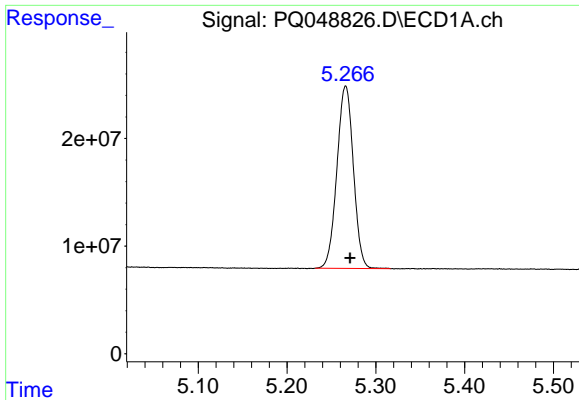
Data Path : Z:\pestpcbsrv\HPCHEM1\ECD_Q\Data\PQ072220\
 Data File : PQ048826.D
 Signal(s) : Signal #1: ECD1A.ch Signal #2: ECD2B.ch
 Acq On : 22 Jul 2020 14:29
 Operator : DD\AJ
 Sample : L3370-03
 Misc :
 ALS Vial : 15 Sample Multiplier: 1

Instrument :
 ECD_Q
 ClientSampled :
 TP-3-S

Integration File signal 1: autoint1.e
 Integration File signal 2: autoint2.e
 Quant Time: Jul 22 16:50:56 2020
 Quant Method : Z:\pestpcbsrv\HPCHEM1\ECD_Q\Method\PQ071620.M
 Quant Title : GC EXTRACTABLES
 QLast Update : Thu Jul 16 05:42:31 2020
 Response via : Initial Calibration
 Integrator: ChemStation

Volume Inj. : 2 µl
 Signal #1 Phase : ZB-MR1 Signal #2 Phase: ZB-MR2
 Signal #1 Info : 30Mx0.32mmx 0.50µm Signal #2 Info : 30M x 0.32mm x 0.25µm

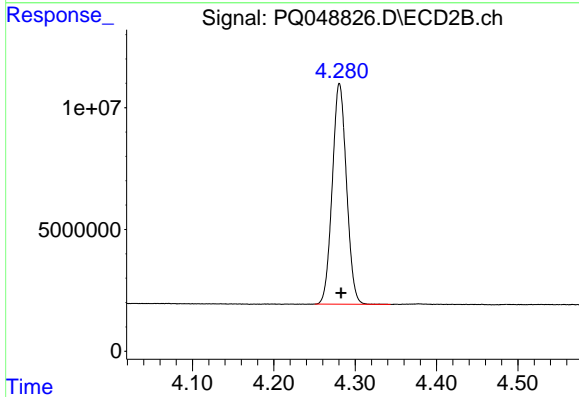




#1 Tetrachloro-m-xylene

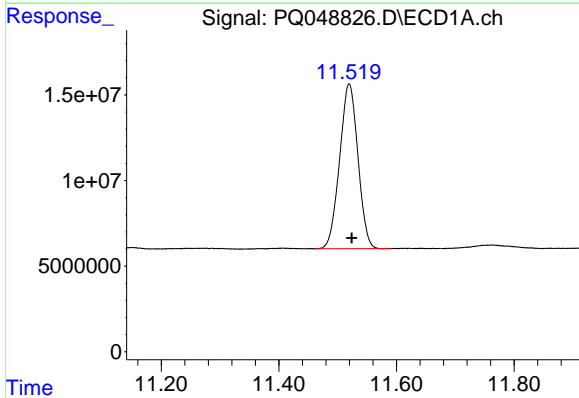
R.T.: 5.266 min
 Delta R.T.: -0.005 min
 Response: 218237777
 Conc: 25.83 ng/ml

Instrument :
 ECD_Q
 ClientSampleId :
 TP-3-S



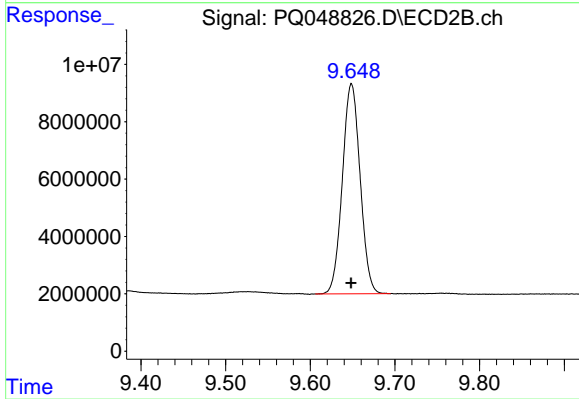
#1 Tetrachloro-m-xylene

R.T.: 4.281 min
 Delta R.T.: -0.002 min
 Response: 109973968
 Conc: 26.22 ng/ml



#2 Decachlorobiphenyl

R.T.: 11.520 min
 Delta R.T.: -0.005 min
 Response: 207947412
 Conc: 20.19 ng/ml



#2 Decachlorobiphenyl

R.T.: 9.649 min
 Delta R.T.: 0.000 min
 Response: 106887565
 Conc: 19.84 ng/ml