

Data Path : Z:\pestpcbsrv\HPCHEM1\ECD\_Q\Data\PQ072519\  
 Data File : PQ041522.D  
 Signal(s) : Signal #1: ECD1A.ch Signal #2: ECD2B.ch  
 Acq On : 25 Jul 2019 09:14  
 Operator : SM\AJ  
 Sample : K3922-02MS  
 Misc :  
 ALS Vial : 56 Sample Multiplier: 1

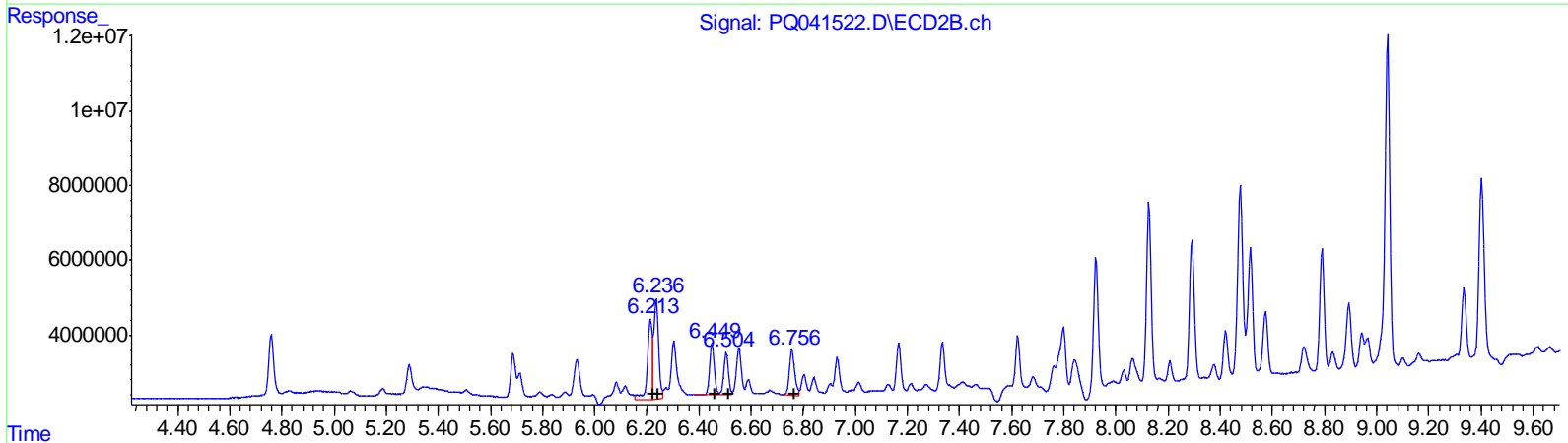
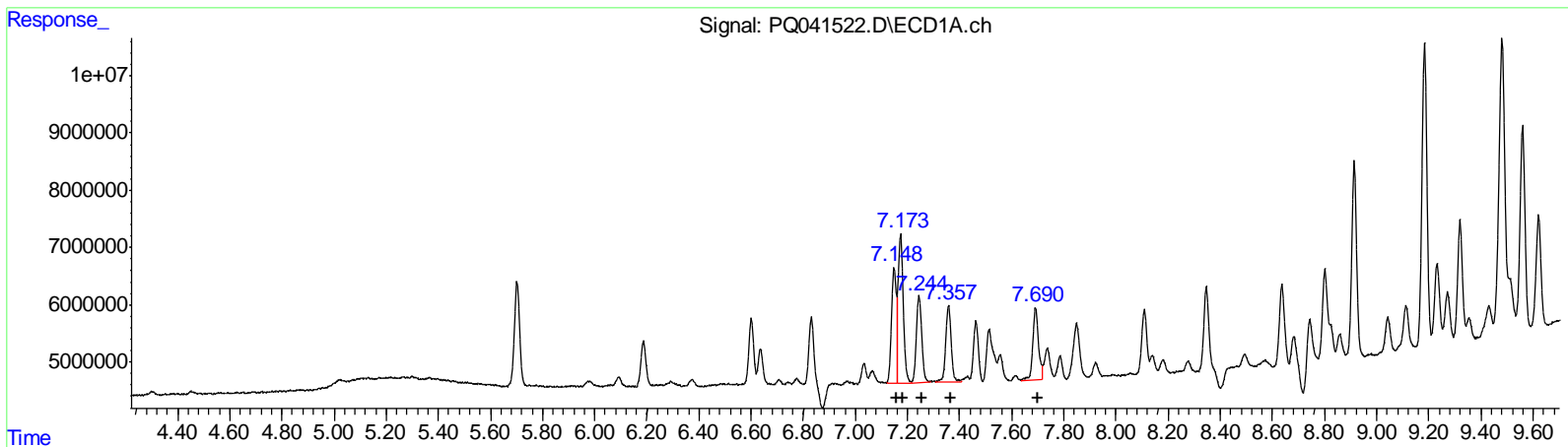
Instrument :  
 ECD\_Q  
 ClientSampled :  
 A52F0MS

Manual Integrations  
 APPROVED

Ankita  
 7/30/2019 9:39:54 AM

Integration File signal 1: autoint1.e  
 Integration File signal 2: autoint2.e  
 Quant Time: Jul 26 00:38:05 2019  
 Quant Method : Z:\pestpcbsrv\HPCHEM1\ECD\_Q\Method\PQ072119CLP.M  
 Quant Title : GC EXTRACTABLES  
 QLast Update : Tue Jul 23 11:02:25 2019  
 Response via : Initial Calibration  
 Integrator: ChemStation

Volume Inj. : 1 µl  
 Signal #1 Phase : ZB MR1 Signal #2 Phase: ZB MR2  
 Signal #1 Info : 30Mx0.32mmx 0.5µm Signal #2 Info : 30M x 0.32mm x 0.25µm



QEdit

(3) AR-1016-1 (L1)		
R.T.	Response	Conc
7.15	24910439	142.73
7.17	36409592	138.06
7.24	21867509	135.17
7.36	19928661	147.87
7.69	19490672	146.47
(3) AR-1016-1 #2 (L1)		
R.T.	Response	Conc
6.21	29070521	198.69
6.24	33509397	160.99
6.45	16911522	149.78
6.50	13543056	148.56
6.76	17053674	141.90

(+) = Expected Retention Time

Data Path : Z:\pestpcbsrv\HPCHEM1\ECD\_Q\Data\PQ072519\  
 Data File : PQ041522.D  
 Signal(s) : Signal #1: ECD1A.ch Signal #2: ECD2B.ch  
 Acq On : 25 Jul 2019 09:14  
 Operator : SM\AJ  
 Sample : K3922-02MS  
 Misc :  
 ALS Vial : 56 Sample Multiplier: 1

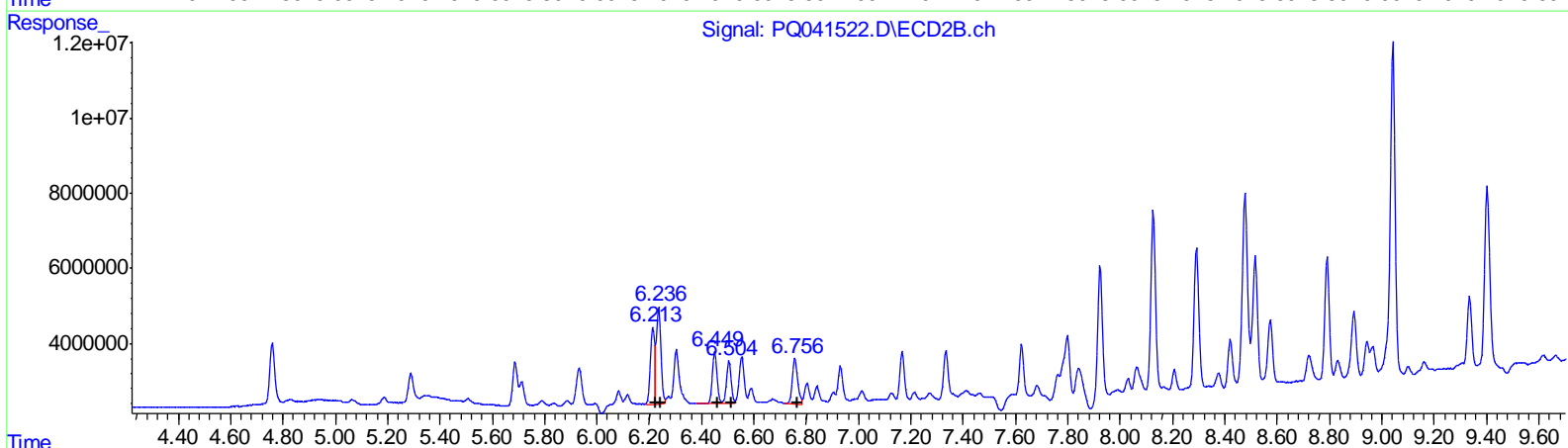
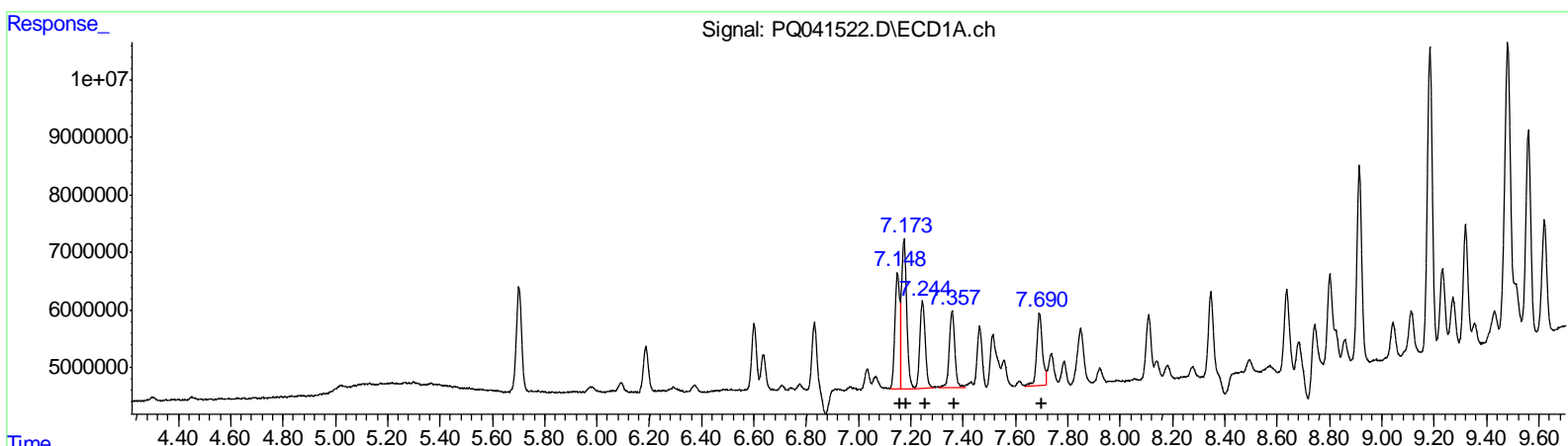
Instrument :  
 ECD\_Q  
 ClientSampled :  
 A52F0MS

Manual Integrations  
 APPROVED

Ankita  
 7/30/2019 9:39:54 AM

Integration File signal 1: autoint1.e  
 Integration File signal 2: autoint2.e  
 Quant Time: Jul 26 00:38:05 2019  
 Quant Method : Z:\pestpcbsrv\HPCHEM1\ECD\_Q\Method\PQ072119CLP.M  
 Quant Title : GC EXTRACTABLES  
 QLast Update : Tue Jul 23 11:02:25 2019  
 Response via : Initial Calibration  
 Integrator: ChemStation

Volume Inj. : 1 µl  
 Signal #1 Phase : ZB MR1 Signal #2 Phase: ZB MR2  
 Signal #1 Info : 30Mx0.32mmx 0.5µm Signal #2 Info : 30M x 0.32mm x 0.25µm



QEdit

(3) AR-1016-1 #2 (L1)

R.T.	Response	Conc
7.15	24910439	142.73
7.17	36409592	138.06
7.24	21867509	135.17
7.36	19928661	147.87
7.69	19490672	146.47

(3) AR-1016-1 #2 (L1)

R.T.	Response	Conc
6.21	22885190	156.41
6.24	31183175	149.82
6.45	16911522	149.78
6.50	13543056	148.56
6.76	17053674	141.90

(+) = Expected Retention Time

Data Path : Z:\pestpcbsrv\HPCHEM1\ECD\_Q\Data\PQ072519\  
 Data File : PQ041522.D  
 Signal(s) : Signal #1: ECD1A.ch Signal #2: ECD2B.ch  
 Acq On : 25 Jul 2019 09:14  
 Operator : SM\AJ  
 Sample : K3922-02MS  
 Misc :  
 ALS Vial : 56 Sample Multiplier: 1

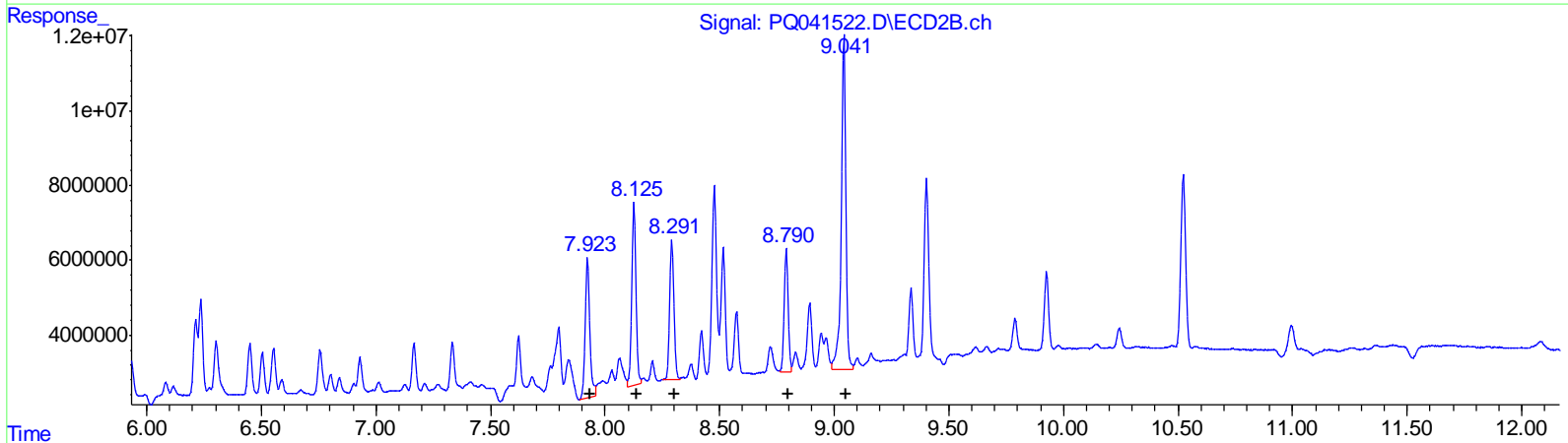
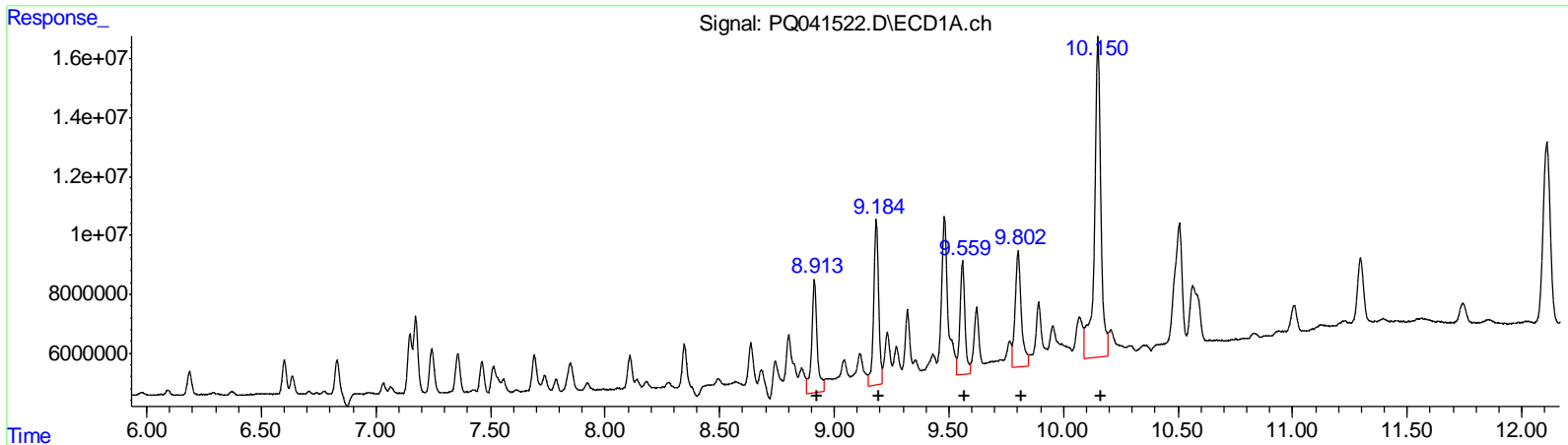
Instrument :  
 ECD\_Q  
 ClientSampled :  
 A52F0MS

Manual Integrations  
 APPROVED

Ankita  
 7/30/2019 9:39:54 AM

Integration File signal 1: autoint1.e  
 Integration File signal 2: autoint2.e  
 Quant Time: Jul 26 00:38:05 2019  
 Quant Method : Z:\pestpcbsrv\HPCHEM1\ECD\_Q\Method\PQ072119CLP.M  
 Quant Title : GC EXTRACTABLES  
 QLast Update : Tue Jul 23 11:02:25 2019  
 Response via : Initial Calibration  
 Integrator: ChemStation

Volume Inj. : 1 µl  
 Signal #1 Phase : ZB MR1 Signal #2 Phase: ZB MR2  
 Signal #1 Info : 30Mx0.32mmx 0.5µm Signal #2 Info : 30M x 0.32mm x 0.25µm



(31) AR-1260-1 (L7)

R.T.	Response	Conc
8.91	63150160	209.03
9.18	84513025	184.38
9.56	57525096	135.48
9.80	73828248	175.39
10.15	213695448	199.98

(31) AR-1260-1 #2 (L7)

R.T.	Response	Conc
7.92	51900598	195.15
8.13	62126714	171.22
8.29	49059928	156.23
8.79	40371934	141.82
9.04	124513179	167.45

(+) = Expected Retention Time

Data Path : Z:\pestpcbsrv\HPCHEM1\ECD\_Q\Data\PQ072519\  
 Data File : PQ041522.D  
 Signal(s) : Signal #1: ECD1A.ch Signal #2: ECD2B.ch  
 Acq On : 25 Jul 2019 09:14  
 Operator : SM\AJ  
 Sample : K3922-02MS  
 Misc :  
 ALS Vial : 56 Sample Multiplier: 1

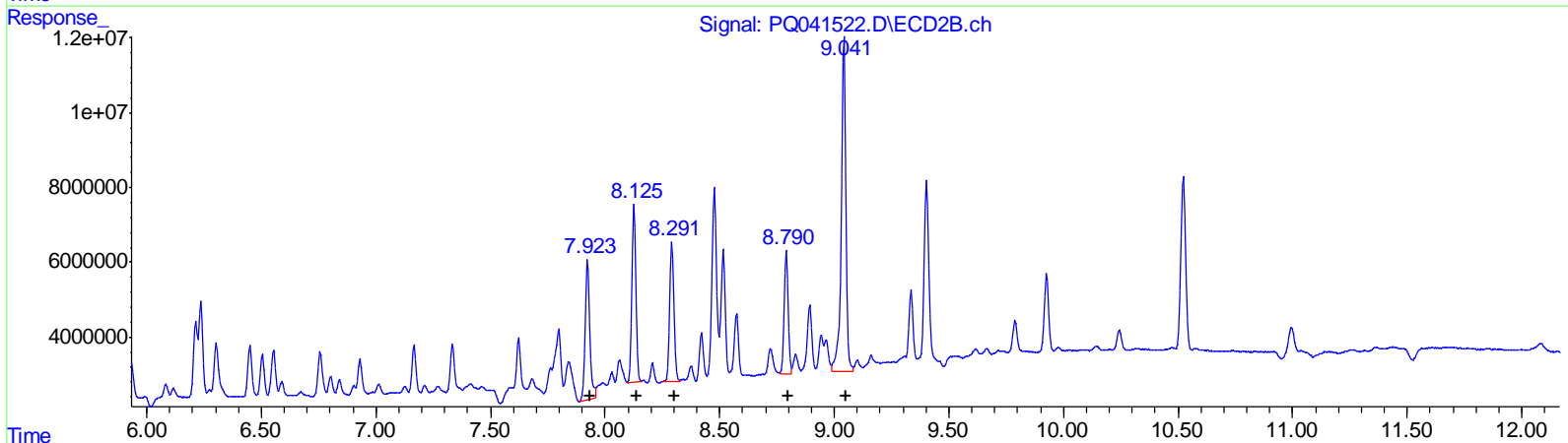
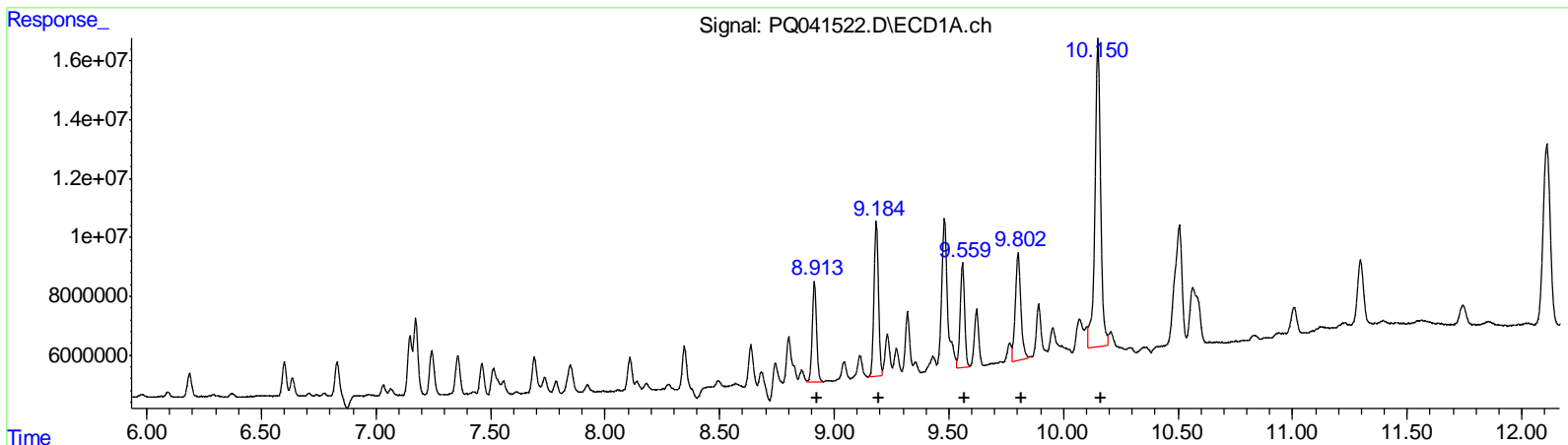
Instrument :  
 ECD\_Q  
 Client Sampled :  
 A52F0MS

Manual Integrations  
 APPROVED

Ankita  
 7/30/2019 9:39:54 AM

Integration File signal 1: autoint1.e  
 Integration File signal 2: autoint2.e  
 Quant Time: Jul 26 00:38:05 2019  
 Quant Method : Z:\pestpcbsrv\HPCHEM1\ECD\_Q\Method\PQ072119CLP.M  
 Quant Title : GC EXTRACTABLES  
 QLast Update : Tue Jul 23 11:02:25 2019  
 Response via : Initial Calibration  
 Integrator: ChemStation

Volume Inj. : 1 µl  
 Signal #1 Phase : ZB MR1 Signal #2 Phase: ZB MR2  
 Signal #1 Info : 30Mx0.32mmx 0.5µm Signal #2 Info : 30M x 0.32mm x 0.25µm



QEdit

(31) AR-1260-1 #2 (L7)	R.T.	Response	Conc
	8.91	44437976	147.09
	9.18	70551375	153.92
	9.56	47457706	111.77
	9.80	60099003	142.77
	10.15	180829000	169.22

(31) AR-1260-1 #2 (L7)	R.T.	Response	Conc
	7.92	51900598	195.15
	8.13	57330854	158.00
	8.29	49059928	156.23
	8.79	40371934	141.82
	9.04	124513179	167.45

(+) = Expected Retention Time

Data Path : Z:\pestpcbsrv\HPCHEM1\ECD\_Q\Data\PQ072519\  
 Data File : PQ041522.D  
 Signal(s) : Signal #1: ECD1A.ch Signal #2: ECD2B.ch  
 Acq On : 25 Jul 2019 09:14  
 Operator : SM\AJ  
 Sample : K3922-02MS  
 Misc :  
 ALS Vial : 56 Sample Multiplier: 1

Instrument :  
 ECD\_Q  
 ClientSampled :  
 A52F0MS

Manual Integrations  
**APPROVED**  
 Ankita  
 7/30/2019 9:39:54 AM

Integration File signal 1: autoint1.e  
 Integration File signal 2: autoint2.e  
 Quant Time: Jul 26 00:38:05 2019  
 Quant Method : Z:\pestpcbsrv\HPCHEM1\ECD\_Q\Method\PQ072119CLP.M  
 Quant Title : GC EXTRACTABLES  
 QLast Update : Tue Jul 23 11:02:25 2019  
 Response via : Initial Calibration  
 Integrator: ChemStation

Volume Inj. : 1 µl  
 Signal #1 Phase : ZB MR1 Signal #2 Phase: ZB MR2  
 Signal #1 Info : 30Mx0.32mmx 0.5µm Signal #2 Info : 30M x 0.32mm x 0.25µm

Compound	RT#1	RT#2	Resp#1	Resp#2	ng/ml	ng/ml
System Monitoring Compounds						
1) SA Tetrachlo...	5.702	4.759	25570962	21093241	6.680	7.017
2) SA Decachlor...	12.109	10.523	131.2E6	67241056	12.681	14.756
Target Compounds						
3) L1 AR-1016-1	7.149	6.213	24910439	22885190	142.727	156.413m
4) L1 AR-1016-2	7.173	6.236	36409592	31183175	138.061	149.817m
5) L1 AR-1016-3	7.244	6.450	21867509	16911522	135.174	149.784
6) L1 AR-1016-4	7.357	6.504	19928661	13543056	147.873	148.555
7) L1 AR-1016-5	7.691	6.756	19490672	17053674	146.469	141.900
31) L7 AR-1260-1	8.913	7.923	44437976	51900598	147.091m	195.148 #
32) L7 AR-1260-2	9.184	8.125	70551375	57330854	153.918m	158.002m
33) L7 AR-1260-3	9.559	8.291	47457706	49059928	111.773m	156.231 #
34) L7 AR-1260-4	9.802	8.790	60099003	40371934	142.771m	141.815
35) L7 AR-1260-5	10.150	9.042	180.8E6	124.5E6	169.223m	167.450

AJ  
 07/31/19

(f)=RT Delta > 1/2 Window (#)=Amounts differ by > 25% (m)=manual int.