

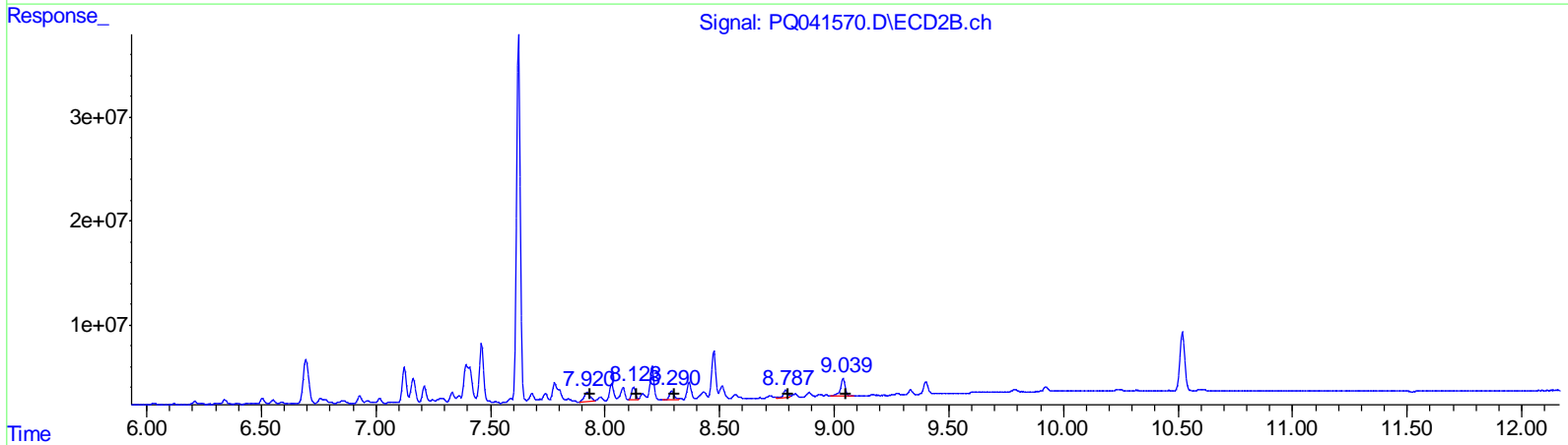
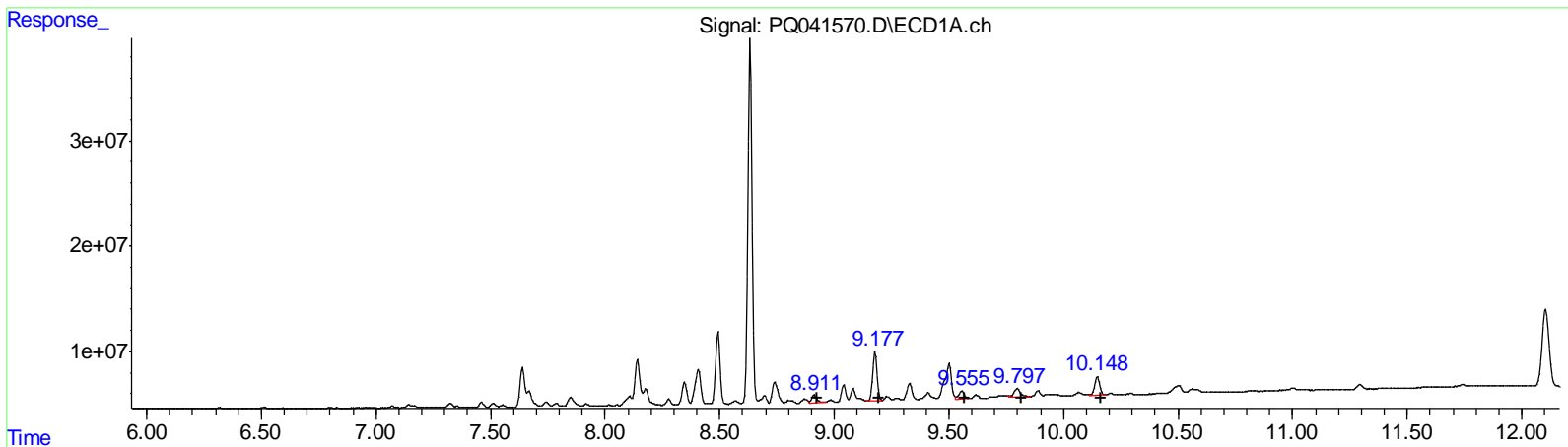
Data Path : Z:\pestpcbsrv\HPCHEM1\ECD_Q\Data\PQ072519\
 Data File : PQ041570.D
 Signal(s) : Signal #1: ECD1A.ch Signal #2: ECD2B.ch
 Acq On : 25 Jul 2019 23:31
 Operator : SM\AJ
 Sample : K3998-09
 Misc :
 ALS Vial : 29 Sample Multiplier: 1

Instrument :
 ECD_Q
ClientSampled :
 ETNG1

Manual Integrations
APPROVED
 Ankita
 7/30/2019 9:43:10 AM

Integration File signal 1: autoint1.e
 Integration File signal 2: autoint2.e
 Quant Time: Jul 26 01:09:52 2019
 Quant Method : Z:\pestpcbsrv\HPCHEM1\ECD_Q\Method\PQ072119CLP.M
 Quant Title : GC EXTRACTABLES
 QLast Update : Tue Jul 23 11:02:25 2019
 Response via : Initial Calibration
 Integrator: ChemStation

Volume Inj. : 1 µl
 Signal #1 Phase : ZB MR1 Signal #2 Phase: ZB MR2
 Signal #1 Info : 30Mx0.32mmx 0.5µm Signal #2 Info : 30M x 0.32mm x 0.25µm



QEdit

(31) AR-1260-1 (L7)

R.T.	Response	Conc
8.91	11024198	36.49
9.18	63329454	138.16
9.56	12254286	28.86
9.80	16595511	39.42
10.15	25861508	24.20

(31) AR-1260-1 #2 (L7)

R.T.	Response	Conc
7.92	17694943	66.53
8.12	14366481	39.59
8.29	11340066	36.11
8.79	10424294	36.62
9.04	26327864	35.41

(+) = Expected Retention Time

Data Path : Z:\pestpcbsrv\HPCHEM1\ECD_Q\Data\PQ072519\
 Data File : PQ041570.D
 Signal(s) : Signal #1: ECD1A.ch Signal #2: ECD2B.ch
 Acq On : 25 Jul 2019 23:31
 Operator : SM\AJ
 Sample : K3998-09
 Misc :
 ALS Vial : 29 Sample Multiplier: 1

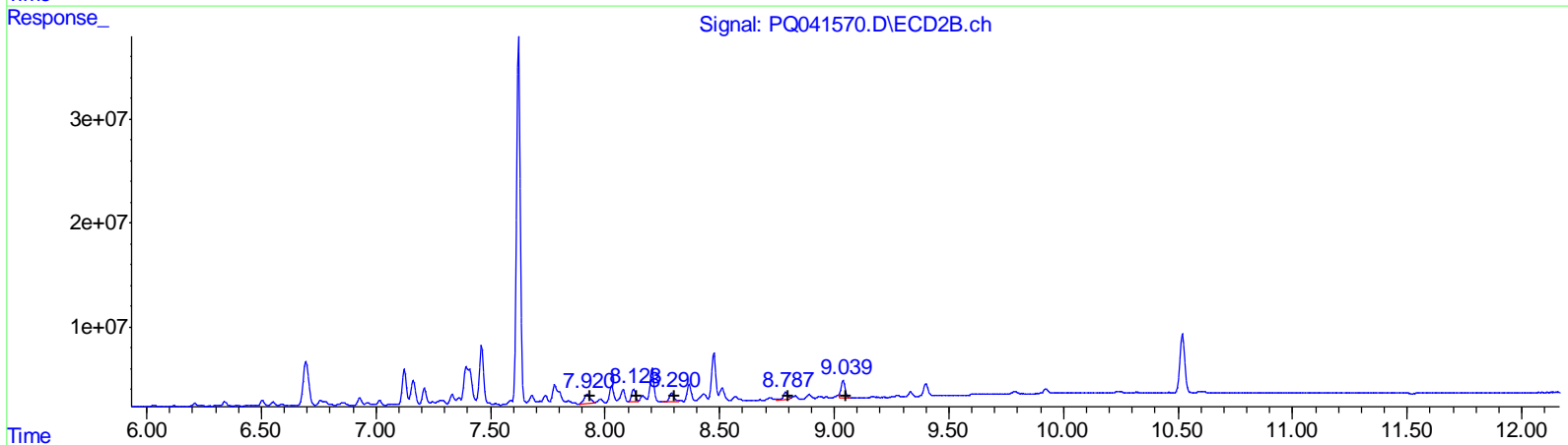
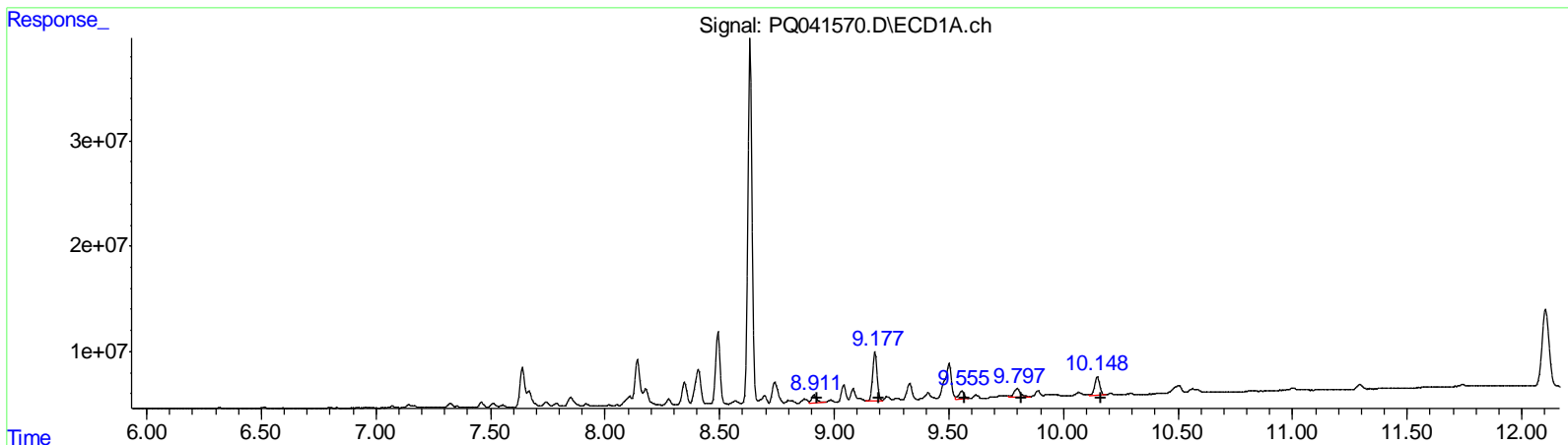
Instrument :
 ECD_Q
 ClientSampled :
 ETNG1

Manual Integrations
 APPROVED

Ankita
 7/30/2019 9:43:10 AM

Integration File signal 1: autoint1.e
 Integration File signal 2: autoint2.e
 Quant Time: Jul 26 01:09:52 2019
 Quant Method : Z:\pestpcbsrv\HPCHEM1\ECD_Q\Method\PQ072119CLP.M
 Quant Title : GC EXTRACTABLES
 QLast Update : Tue Jul 23 11:02:25 2019
 Response via : Initial Calibration
 Integrator: ChemStation

Volume Inj. : 1 µl
 Signal #1 Phase : ZB MR1 Signal #2 Phase: ZB MR2
 Signal #1 Info : 30Mx0.32mmx 0.5µm Signal #2 Info : 30M x 0.32mm x 0.25µm



QEdit

(31) AR-1260-1 #2 (L7)		
R.T.	Response	Conc
8.91	11024198	36.49
9.18	63329454	138.16
9.56	12254286	28.86
9.80	16595511	39.42
10.15	25861508	24.20
(31) AR-1260-1 #2 (L7)		
R.T.	Response	Conc
7.92	17694943	66.53
8.12	15646469	43.12
8.29	11340066	36.11
8.79	10424294	36.62
9.04	21851645	29.39

(+) = Expected Retention Time

Data Path : Z:\pestpcbsrv\HPCHEM1\ECD_Q\Data\PQ072519\
 Data File : PQ041570.D
 Signal(s) : Signal #1: ECD1A.ch Signal #2: ECD2B.ch
 Acq On : 25 Jul 2019 23:31
 Operator : SM\AJ
 Sample : K3998-09
 Misc :
 ALS Vial : 29 Sample Multiplier: 1

Instrument :
 ECD_Q
 ClientSampled :
 ETNG1

Manual Integrations
APPROVED
 Ankita
 7/30/2019 9:43:10 AM

Integration File signal 1: autoint1.e
 Integration File signal 2: autoint2.e
 Quant Time: Jul 26 01:09:52 2019
 Quant Method : Z:\pestpcbsrv\HPCHEM1\ECD_Q\Method\PQ072119CLP.M
 Quant Title : GC EXTRACTABLES
 QLast Update : Tue Jul 23 11:02:25 2019
 Response via : Initial Calibration
 Integrator: ChemStation

Volume Inj. : 1 µl
 Signal #1 Phase : ZB MR1 Signal #2 Phase: ZB MR2
 Signal #1 Info : 30Mx0.32mmx 0.5µm Signal #2 Info : 30M x 0.32mm x 0.25µm

Compound	RT#1	RT#2	Resp#1	Resp#2	ng/ml	ng/ml

System Monitoring Compounds						
1) SA Tetrachlo...	5.701	4.758	45567563	38740158	11.903	12.887
2) SA Decachlor...	12.103	10.519	155.7E6	82832841	15.056	18.178
Target Compounds						
31) L7 AR-1260-1	8.911	7.921	11024198	17694943	36.490	66.534 #
32) L7 AR-1260-2	9.177	8.123	63329454	15646469	138.163	43.121m#
33) L7 AR-1260-3	9.556	8.289	12254286	11340066	28.862	36.112 #
34) L7 AR-1260-4	9.797	8.788	16595511	10424294	39.424	36.618
35) L7 AR-1260-5	10.148	9.039	25861508	21851645	24.202	29.387m

AJ
 07/31/19

(f)=RT Delta > 1/2 Window (#)=Amounts differ by > 25% (m)=manual int.