

Data Path : Z:\pestpcbsrv\HPCHEM1\ECD_Q\Data\PQ072523\
 Data File : PQ062630.D
 Signal(s) : Signal #1: ECD1A.ch Signal #2: ECD2B.ch
 Acq On : 25 Jul 2023 10:38
 Operator : YP\AJ
 Sample : 03711-05
 Misc :
 ALS Vial : 11 Sample Multiplier: 1

Instrument :
 ECD_Q
 ClientSampleId :
 PIPE-36

Integration File signal 1: autoint1.e
 Integration File signal 2: autoint2.e
 Quant Time: Jul 25 17:46:37 2023
 Quant Method : Z:\pestpcbsrv\HPCHEM1\ECD_Q\Method\PQ070123.M
 Quant Title : GC EXTRACTABLES
 QLast Update : Tue Jul 04 05:32:27 2023
 Response via : Initial Calibration
 Integrator: ChemStation

Volume Inj. : 2 µl
 Signal #1 Phase : ZB-MR1 Signal #2 Phase: ZB-MR2
 Signal #1 Info : 30Mx0.32mmx 0.50µ Signal #2 Info : 30M x 0.32mm x 0.25µm

Compound	RT#1	RT#2	Resp#1	Resp#2	ng/ml	ng/ml

System Monitoring Compounds						
1) SA Tetrachlo...	3.402	2.755	85179532	57578742	17.461	22.948 #
2) SA Decachlor...	8.582	7.522	72643999	63351431	19.997	19.012

Target Compounds

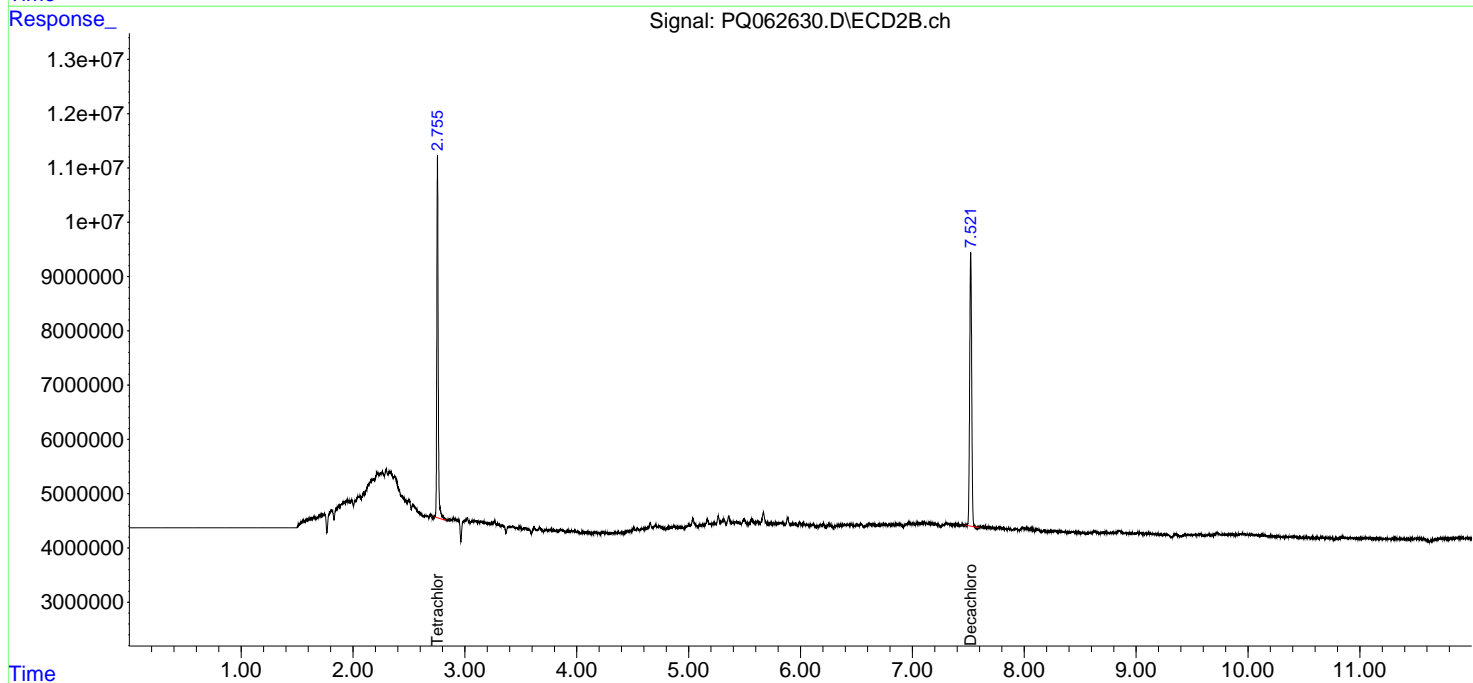
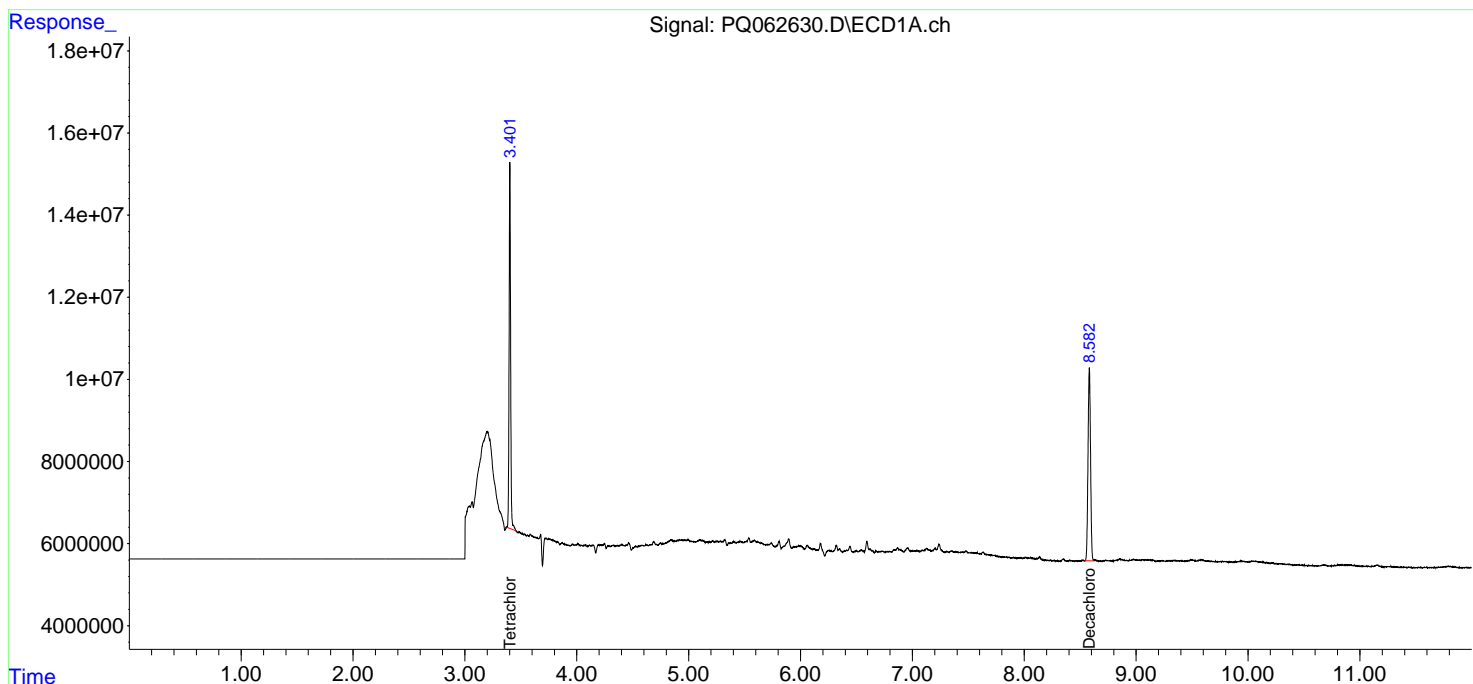
(f)=RT Delta > 1/2 Window (#)=Amounts differ by > 25% (m)=manual int.

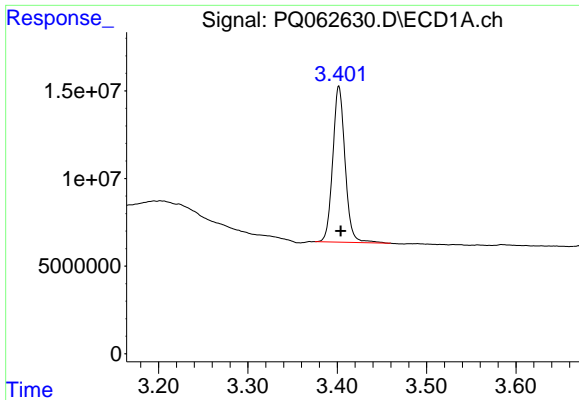
Data Path : Z:\pestpcbsrv\HPCHEM1\ECD_Q\Data\PQ072523\
 Data File : PQ062630.D
 Signal(s) : Signal #1: ECD1A.ch Signal #2: ECD2B.ch
 Acq On : 25 Jul 2023 10:38
 Operator : YP\AJ
 Sample : 03711-05
 Misc :
 ALS Vial : 11 Sample Multiplier: 1

Instrument :
 ECD_Q
 ClientSampleId :
 PIPE-36

Integration File signal 1: autoint1.e
 Integration File signal 2: autoint2.e
 Quant Time: Jul 25 17:46:37 2023
 Quant Method : Z:\pestpcbsrv\HPCHEM1\ECD_Q\Method\PQ070123.M
 Quant Title : GC EXTRACTABLES
 QLast Update : Tue Jul 04 05:32:27 2023
 Response via : Initial Calibration
 Integrator: ChemStation

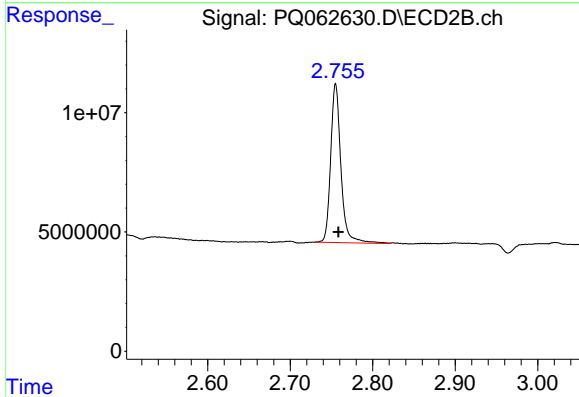
Volume Inj. : 2 µl
 Signal #1 Phase : ZB-MR1 Signal #2 Phase: ZB-MR2
 Signal #1 Info : 30Mx0.32mmx 0.50µ Signal #2 Info : 30M x 0.32mm x 0.25µm



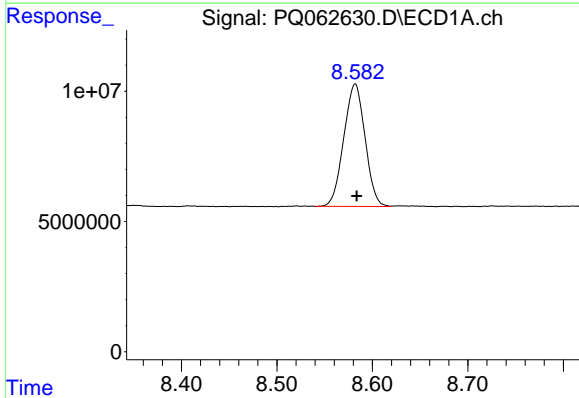


#1 Tetrachloro-m-xylene
 R.T.: 3.402 min
 Delta R.T.: -0.002 min
 Response: 85179532
 Conc: 17.46 ng/ml

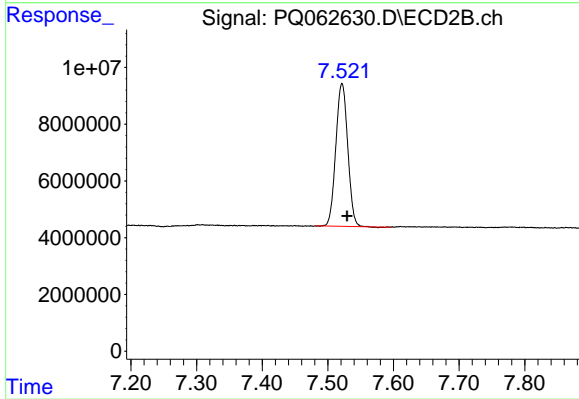
Instrument :
 ECD_Q
 ClientSampleId :
 PIPE-36



#1 Tetrachloro-m-xylene
 R.T.: 2.755 min
 Delta R.T.: -0.004 min
 Response: 57578742
 Conc: 22.95 ng/ml



#2 Decachlorobiphenyl
 R.T.: 8.582 min
 Delta R.T.: -0.002 min
 Response: 72643999
 Conc: 20.00 ng/ml



#2 Decachlorobiphenyl
 R.T.: 7.522 min
 Delta R.T.: -0.008 min
 Response: 63351431
 Conc: 19.01 ng/ml