

Data Path : Z:\pestpcbsrv\HPCHEM1\ECD_Q\Data\PQ072523\
 Data File : PQ062653.D
 Signal(s) : Signal #1: ECD1A.ch Signal #2: ECD2B.ch
 Acq On : 25 Jul 2023 16:32
 Operator : YP\AJ
 Sample : I.BLK
 Misc :
 ALS Vial : 2 Sample Multiplier: 1

Instrument :
 ECD_Q
 ClientSampleId :
 I.BLK

Integration File signal 1: autoint1.e
 Integration File signal 2: autoint2.e
 Quant Time: Jul 25 17:57:12 2023
 Quant Method : Z:\pestpcbsrv\HPCHEM1\ECD_Q\Method\PQ070123.M
 Quant Title : GC EXTRACTABLES
 QLast Update : Tue Jul 04 05:32:27 2023
 Response via : Initial Calibration
 Integrator: ChemStation

Volume Inj. : 2 µl
 Signal #1 Phase : ZB-MR1 Signal #2 Phase: ZB-MR2
 Signal #1 Info : 30Mx0.32mmx 0.50µ Signal #2 Info : 30M x 0.32mm x 0.25µm

Compound	RT#1	RT#2	Resp#1	Resp#2	ng/ml	ng/ml

System Monitoring Compounds						
1) SA Tetrachlo...	3.402	2.755	91635436	63208552	18.785	25.192 #
2) SA Decachlor...	8.582	7.523	79493344	69252904	21.882	20.783

Target Compounds

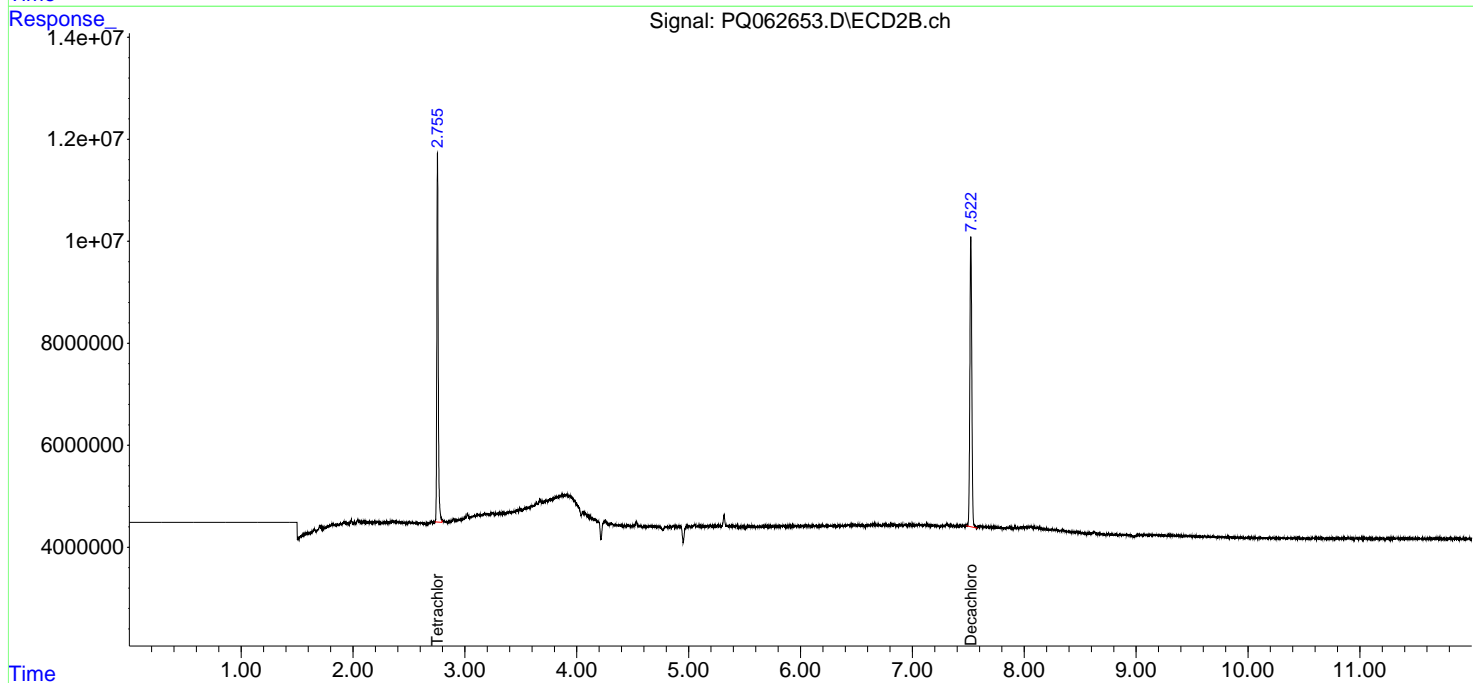
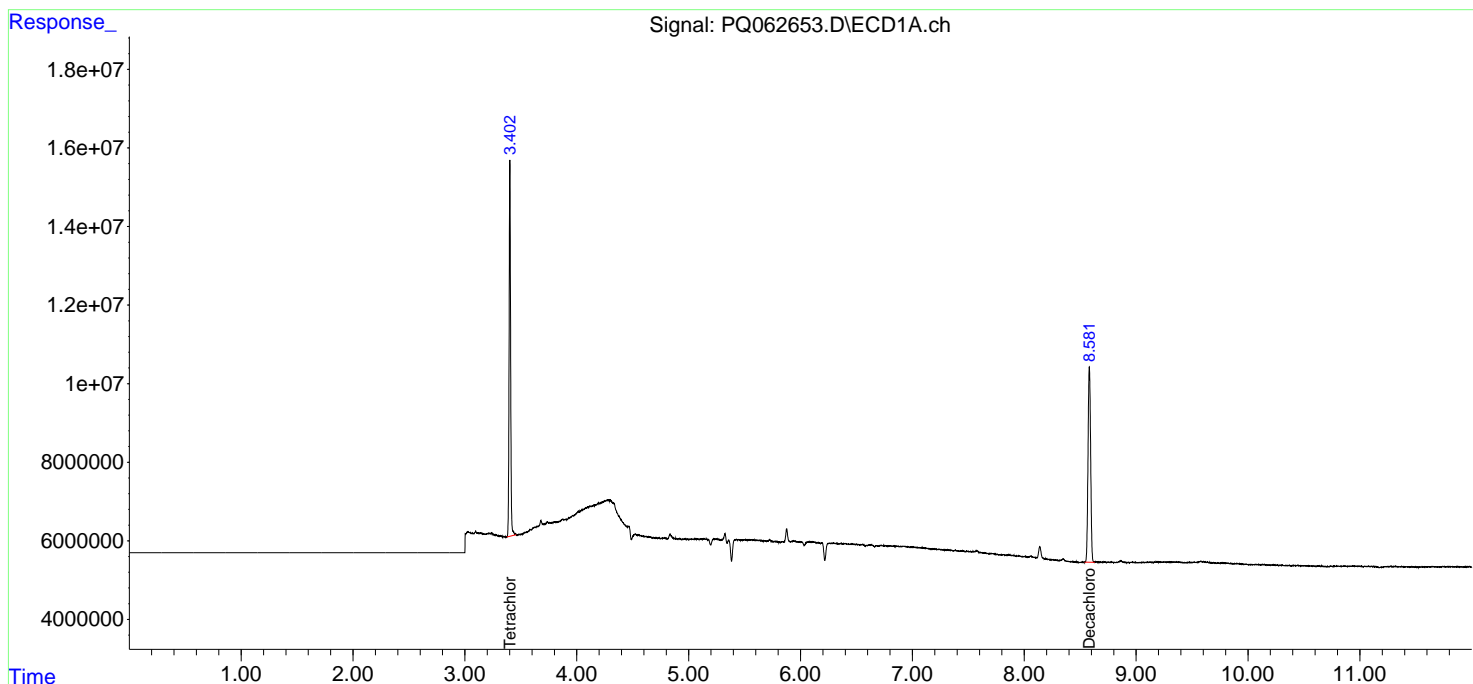
(f)=RT Delta > 1/2 Window (#)=Amounts differ by > 25% (m)=manual int.

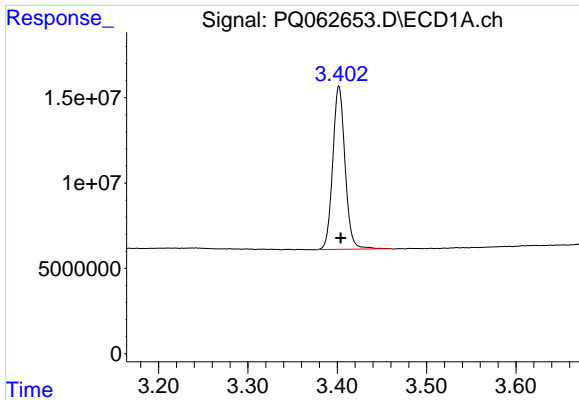
Data Path : Z:\pestpcbsrv\HPCHEM1\ECD_Q\Data\PQ072523\
 Data File : PQ062653.D
 Signal(s) : Signal #1: ECD1A.ch Signal #2: ECD2B.ch
 Acq On : 25 Jul 2023 16:32
 Operator : YP\AJ
 Sample : I.BLK
 Misc :
 ALS Vial : 2 Sample Multiplier: 1

Instrument :
 ECD_Q
 ClientSampleId :
 I.BLK

Integration File signal 1: autoint1.e
 Integration File signal 2: autoint2.e
 Quant Time: Jul 25 17:57:12 2023
 Quant Method : Z:\pestpcbsrv\HPCHEM1\ECD_Q\Method\PQ070123.M
 Quant Title : GC EXTRACTABLES
 QLast Update : Tue Jul 04 05:32:27 2023
 Response via : Initial Calibration
 Integrator: ChemStation

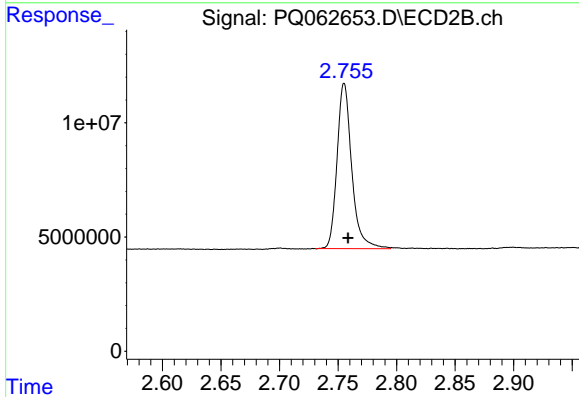
Volume Inj. : 2 µl
 Signal #1 Phase : ZB-MR1 Signal #2 Phase: ZB-MR2
 Signal #1 Info : 30Mx0.32mmx 0.50µ Signal #2 Info : 30M x 0.32mm x 0.25µm



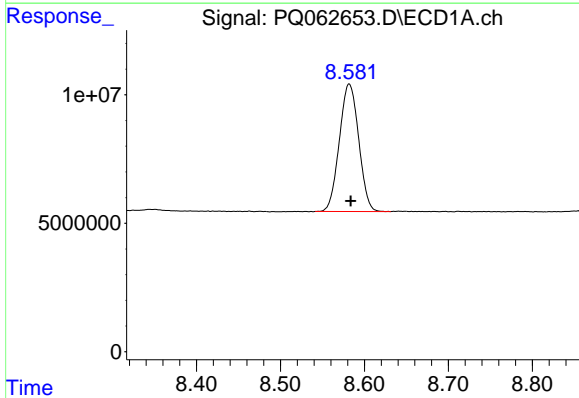


#1 Tetrachloro-m-xylene
 R.T.: 3.402 min
 Delta R.T.: -0.002 min
 Response: 91635436
 Conc: 18.78 ng/ml

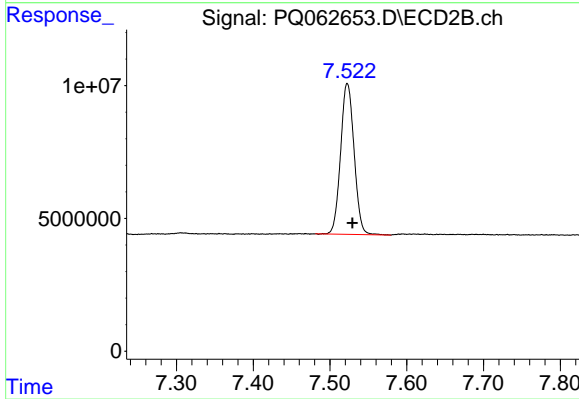
Instrument :
 ECD_Q
 ClientSampleId :
 I.BLK



#1 Tetrachloro-m-xylene
 R.T.: 2.755 min
 Delta R.T.: -0.003 min
 Response: 63208552
 Conc: 25.19 ng/ml



#2 Decachlorobiphenyl
 R.T.: 8.582 min
 Delta R.T.: -0.002 min
 Response: 79493344
 Conc: 21.88 ng/ml



#2 Decachlorobiphenyl
 R.T.: 7.523 min
 Delta R.T.: -0.007 min
 Response: 69252904
 Conc: 20.78 ng/ml