

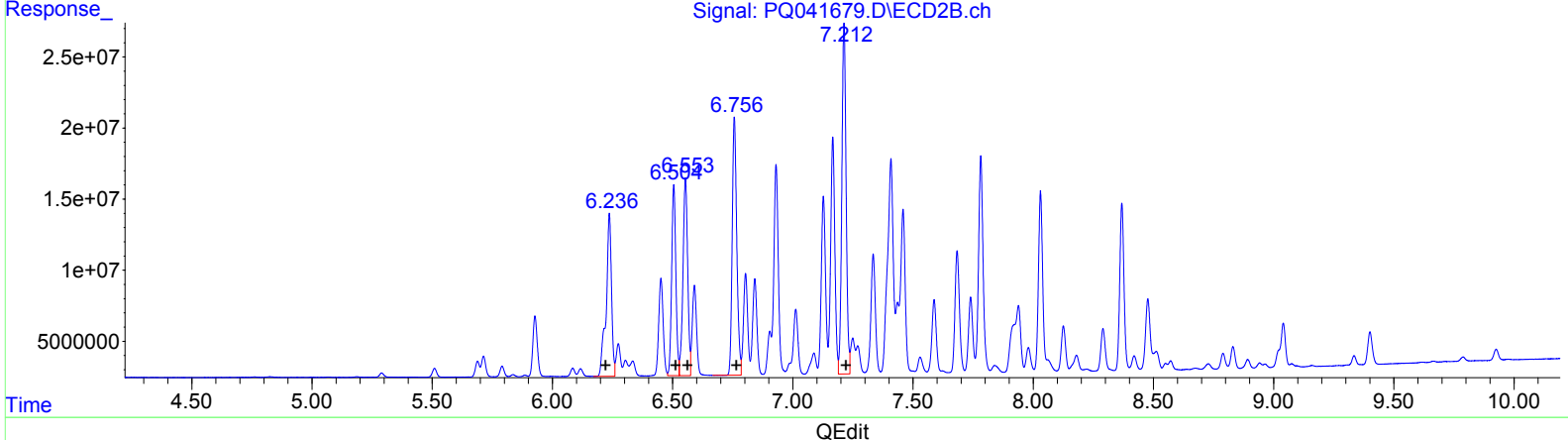
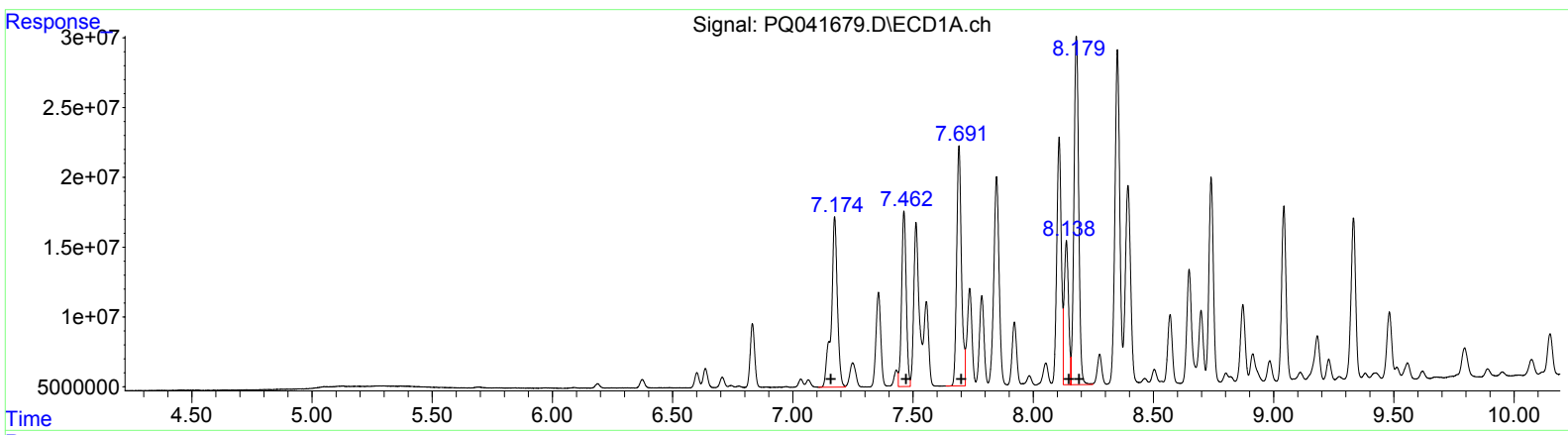
Data Path : Z:\pestpcbsrv\HPCHEM1\ECD_Q\Data\PQ072619\
 Data File : PQ041679.D
 Signal(s) : Signal #1: ECD1A.ch Signal #2: ECD2B.ch
 Acq On : 27 Jul 2019 16:09
 Operator : SM\AJ
 Sample : K4022-21DL2 200X
 Misc :
 ALS Vial : 23 Sample Multiplier: 1

Instrument :
 ECD_Q
Client Sampled :
 ETNK9DL2

Manual Integrations
APPROVED
 Ankita
 8/1/2019 8:10:38 AM

Integration File signal 1: autoint1.e
 Integration File signal 2: autoint2.e
 Quant Time: Jul 29 15:10:24 2019
 Quant Method : Z:\pestpcbsrv\HPCHEM1\ECD_Q\Method\PQ072119CLP.M
 Quant Title : GC EXTRACTABLES
 QLast Update : Tue Jul 23 11:02:25 2019
 Response via : Initial Calibration
 Integrator: ChemStation

Volume Inj. : 1 µl
 Signal #1 Phase : ZB MR1 Signal #2 Phase: ZB MR2
 Signal #1 Info : 30Mx0.32mmx 0.5µm Signal #2 Info : 30M x 0.32mm x 0.25µm



QEdit

(21) AR-1248-1 (L5)		
R.T.	Response	Conc
7.17	216153641	2330.29
7.46	168435852	1368.75
7.69	238197804	1516.84
8.14	129654995	600.23
8.18	341776874	1604.89

(21) AR-1248-1 #2 (L5)		
R.T.	Response	Conc
6.24	178186929	2218.51
6.50	163214197	1457.07
6.55	189146519	1638.66
6.76	239306260	1653.17
7.21	306608767	1822.00

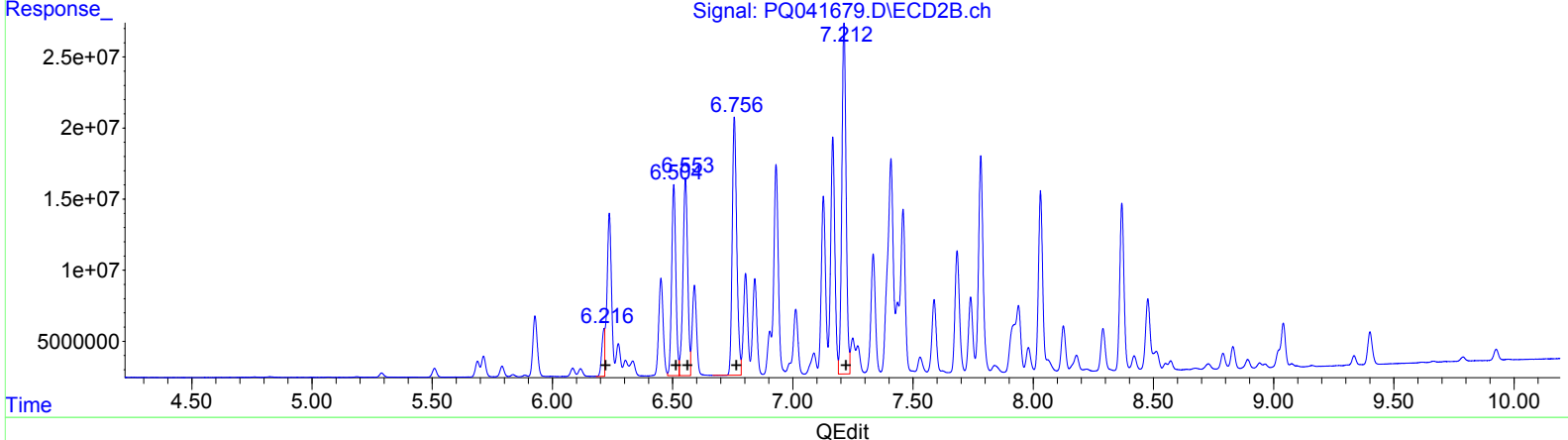
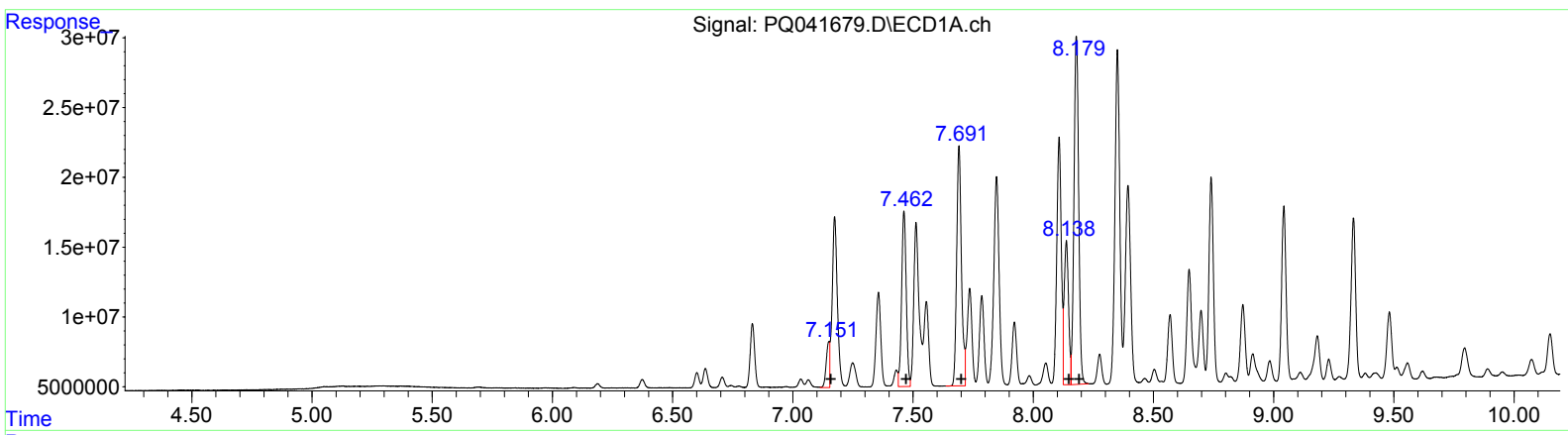
Data Path : Z:\pestpcbsrv\HPCHEM1\ECD_Q\Data\PQ072619\
 Data File : PQ041679.D
 Signal(s) : Signal #1: ECD1A.ch Signal #2: ECD2B.ch
 Acq On : 27 Jul 2019 16:09
 Operator : SM\AJ
 Sample : K4022-21DL2 200X
 Misc :
 ALS Vial : 23 Sample Multiplier: 1

Instrument :
 ECD_Q
Client Sampled :
 ETNK9DL2

Manual Integrations
APPROVED
 Ankita
 8/1/2019 8:10:38 AM

Integration File signal 1: autoint1.e
 Integration File signal 2: autoint2.e
 Quant Time: Jul 29 15:10:24 2019
 Quant Method : Z:\pestpcbsrv\HPCHEM1\ECD_Q\Method\PQ072119CLP.M
 Quant Title : GC EXTRACTABLES
 QLast Update : Tue Jul 23 11:02:25 2019
 Response via : Initial Calibration
 Integrator: ChemStation

Volume Inj. : 1 µl
 Signal #1 Phase : ZB MR1 Signal #2 Phase: ZB MR2
 Signal #1 Info : 30Mx0.32mmx 0.5µm Signal #2 Info : 30M x 0.32mm x 0.25µm



QEdit

(21) AR-1248-1 #2 (L5)		
R.T.	Response	Conc
7.15	32941677	355.13
7.46	168435852	1368.75
7.69	238197804	1516.84
8.14	129654995	600.23
8.18	338001486	1587.16

(21) AR-1248-1 #2 (L5)		
R.T.	Response	Conc
6.22	28240953	351.61
6.50	163214197	1457.07
6.55	189146519	1638.66
6.76	239306260	1653.17
7.21	306608767	1822.00

Data Path : Z:\pestpcbsrv\HPCHEM1\ECD_Q\Data\PQ072619\
 Data File : PQ041679.D
 Signal(s) : Signal #1: ECD1A.ch Signal #2: ECD2B.ch
 Acq On : 27 Jul 2019 16:09
 Operator : SM\AJ
 Sample : K4022-21DL2 200X
 Misc :
 ALS Vial : 23 Sample Multiplier: 1

Instrument :
 ECD_Q
 ClientSampleId :
 ETNK9DL2

Manual Integrations
 APPROVED

Ankita
 8/1/2019 8:10:38 AM

Integration File signal 1: autoint1.e
 Integration File signal 2: autoint2.e
 Quant Time: Jul 29 15:10:24 2019
 Quant Method : Z:\pestpcbsrv\HPCHEM1\ECD_Q\Method\PQ072119CLP.M
 Quant Title : GC EXTRACTABLES
 QLast Update : Tue Jul 23 11:02:25 2019
 Response via : Initial Calibration
 Integrator: ChemStation

Volume Inj. : 1 µl
 Signal #1 Phase : ZB MR1 Signal #2 Phase: ZB MR2
 Signal #1 Info : 30Mx0.32mmx 0.5µm Signal #2 Info : 30M x 0.32mm x 0.25µm

Compound	RT#1	RT#2	Resp#1	Resp#2	ng/ml	ng/ml
----------	------	------	--------	--------	-------	-------

System Monitoring Compounds

Target Compounds

21)	L5 AR-1248-1	7.151	6.216	32941677	28240953	355.134m)	351.614m)
22)	L5 AR-1248-2	7.462	6.505	168.4E6	163.2E6	1368.751	1457.075
23)	L5 AR-1248-3	7.691	6.553	238.2E6	189.1E6	1516.840	1638.660
24)	L5 AR-1248-4	8.138	6.757	129.7E6	239.3E6	600.229	1653.171 #
25)	L5 AR-1248-5	8.179	7.213	338.0E6	306.6E6	1587.165m)	1821.997

AJ
 07/31/19

(f)=RT Delta > 1/2 Window (#)=Amounts differ by > 25% (m)=manual int.