

Data Path : Z:\pestpcbsrv\HPCHEM1\ECD_Q\Data\PQ072623\
 Data File : PQ062698.D
 Signal(s) : Signal #1: ECD1A.ch Signal #2: ECD2B.ch
 Acq On : 26 Jul 2023 22:03
 Operator : YP\AJ
 Sample : PQ072623ICV500
 Misc :
 ALS Vial : 31 Sample Multiplier: 1

Instrument :
 ECD_Q
 ClientSampleId :
 ICVPQ072623

Integration File signal 1: autoint1.e
 Integration File signal 2: autoint2.e
 Quant Time: Jul 27 01:24:45 2023
 Quant Method : Z:\pestpcbsrv\HPCHEM1\ECD_Q\Method\PQ072623.M
 Quant Title : GC EXTRACTABLES
 QLast Update : Thu Jul 27 01:22:50 2023
 Response via : Initial Calibration
 Integrator: ChemStation

Volume Inj. : 2 µl
 Signal #1 Phase : ZB-MR1 Signal #2 Phase: ZB-MR2
 Signal #1 Info : 30Mx0.32mmx 0.50µ Signal #2 Info : 30M x 0.32mm x 0.25µm

Compound	RT#1	RT#2	Resp#1	Resp#2	ng/ml	ng/ml

System Monitoring Compounds						
1) SA Tetrachlo...	3.403	2.756	242.1E6	158.8E6	53.712	52.197
2) SA Decachlor...	8.583	7.523	200.5E6	167.4E6	54.336	51.460
Target Compounds						
3) L1 AR-1016-1	4.504	3.757	80174355	53321695	544.722	538.451
4) L1 AR-1016-2	4.523	3.771	124.9E6	77553908	548.757	523.782
5) L1 AR-1016-3	4.580	3.931	77803129	41530384	551.164	526.525
6) L1 AR-1016-4	4.672	3.981	63615556	34537103	550.847	526.587
7) L1 AR-1016-5	4.959	4.175	64402542	42337481	555.533	526.054
31) L7 AR-1260-1	6.062	5.168	127.5E6	81511522	550.941	528.988
32) L7 AR-1260-2	6.322	5.358	154.0E6	99371887	548.206	530.157
33) L7 AR-1260-3	6.675	5.500	112.6E6	94357490	559.797	529.243
34) L7 AR-1260-4	6.893	5.961	126.6E6	80063726	550.855	537.337
35) L7 AR-1260-5	7.204	6.208	253.6E6	178.3E6	550.004	529.737

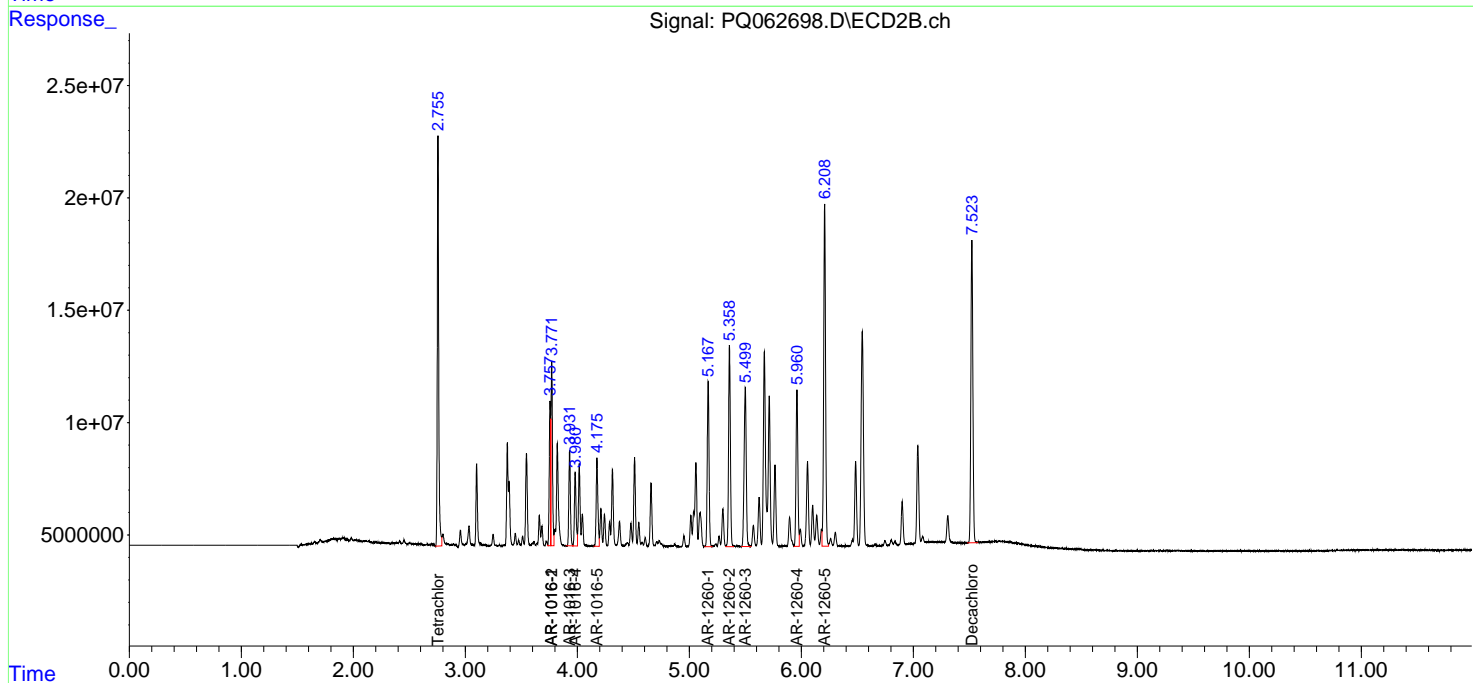
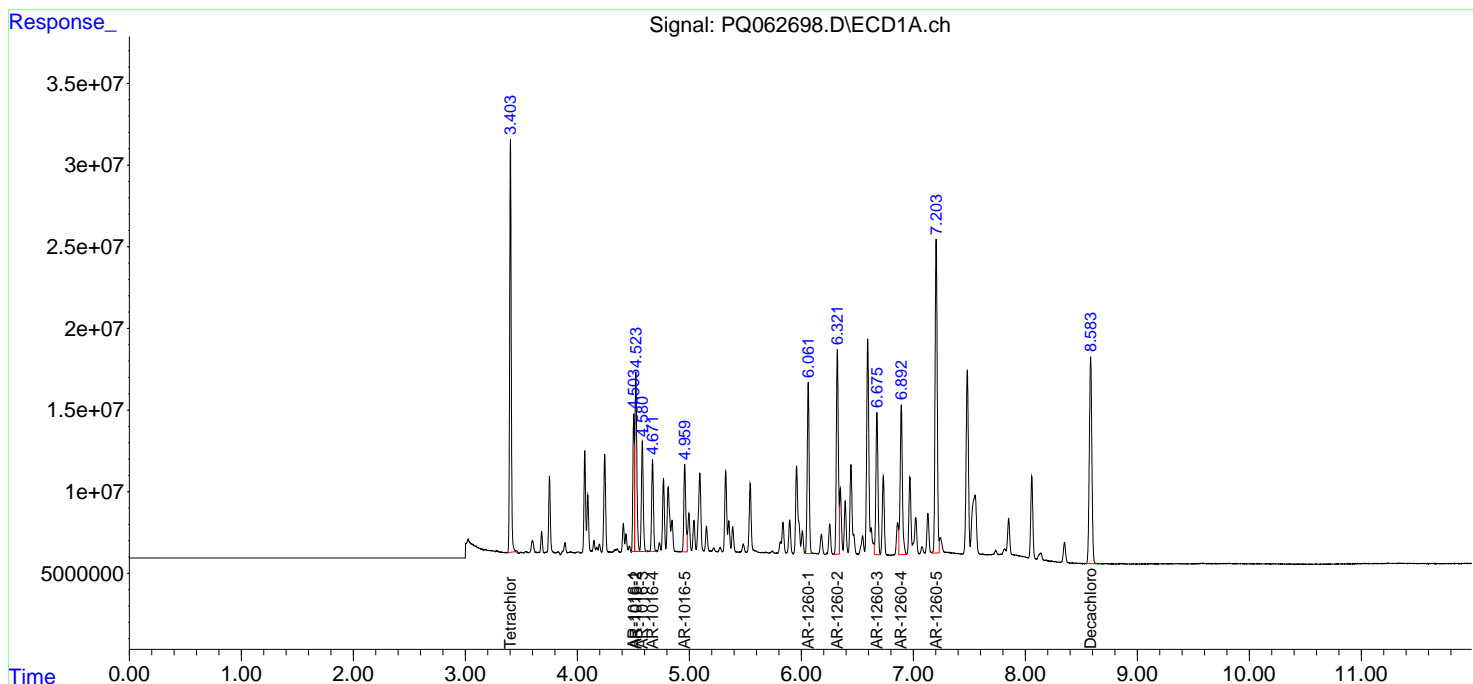
(f)=RT Delta > 1/2 Window (#)=Amounts differ by > 25% (m)=manual int.

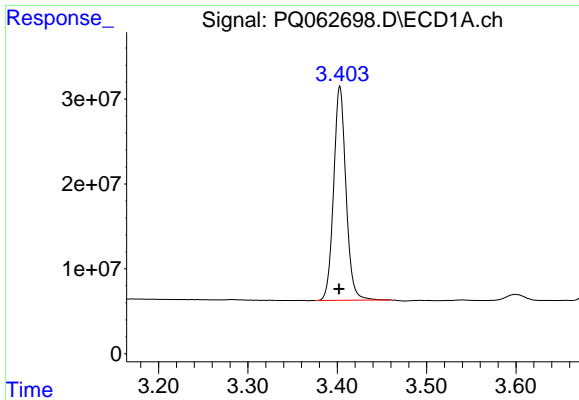
Data Path : Z:\pestpcbsrv\HPCHEM1\ECD_Q\Data\PQ072623\
 Data File : PQ062698.D
 Signal(s) : Signal #1: ECD1A.ch Signal #2: ECD2B.ch
 Acq On : 26 Jul 2023 22:03
 Operator : YP\AJ
 Sample : PQ072623ICV500
 Misc :
 ALS Vial : 31 Sample Multiplier: 1

Instrument :
 ECD_Q
 ClientSampleId :
 ICVPQ072623

Integration File signal 1: autoint1.e
 Integration File signal 2: autoint2.e
 Quant Time: Jul 27 01:24:45 2023
 Quant Method : Z:\pestpcbsrv\HPCHEM1\ECD_Q\Method\PQ072623.M
 Quant Title : GC EXTRACTABLES
 QLast Update : Thu Jul 27 01:22:50 2023
 Response via : Initial Calibration
 Integrator: ChemStation

Volume Inj. : 2 µl
 Signal #1 Phase : ZB-MR1 Signal #2 Phase: ZB-MR2
 Signal #1 Info : 30Mx0.32mmx 0.50µ Signal #2 Info : 30M x 0.32mm x 0.25µm

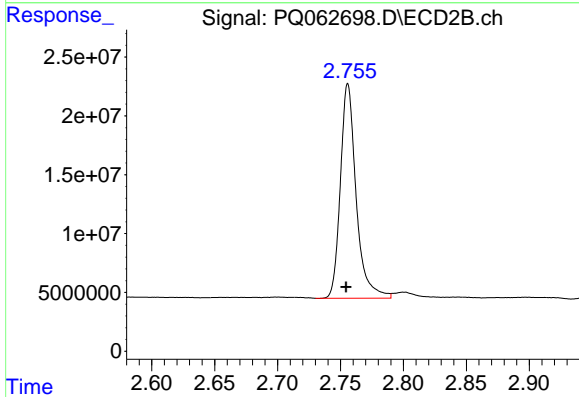




#1 Tetrachloro-m-xylene

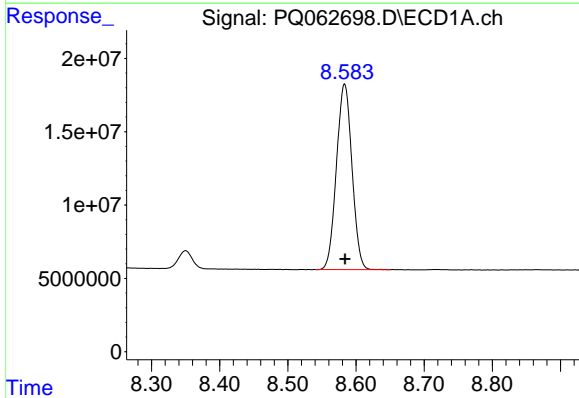
R.T.: 3.403 min
 Delta R.T.: 0.001 min
 Response: 242136696
 Conc: 53.71 ng/ml

Instrument :
 ECD_Q
 ClientSampleId :
 ICPQ072623



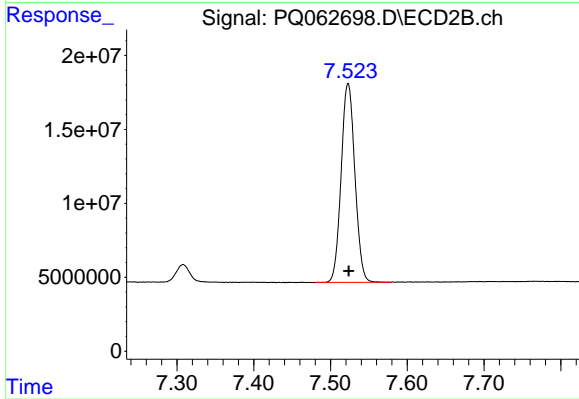
#1 Tetrachloro-m-xylene

R.T.: 2.756 min
 Delta R.T.: 0.001 min
 Response: 158842286
 Conc: 52.20 ng/ml



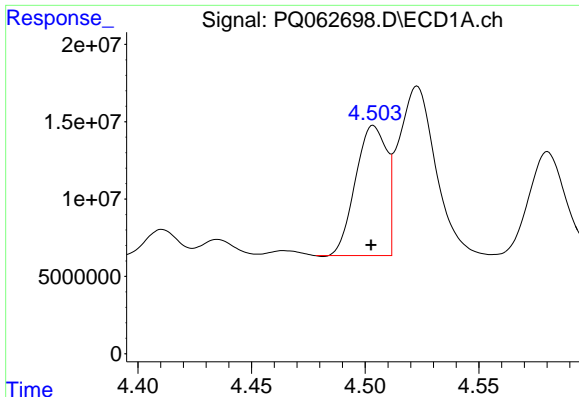
#2 Decachlorobiphenyl

R.T.: 8.583 min
 Delta R.T.: 0.000 min
 Response: 200493096
 Conc: 54.34 ng/ml



#2 Decachlorobiphenyl

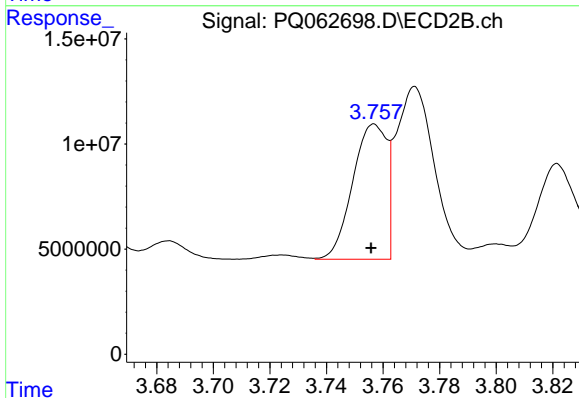
R.T.: 7.523 min
 Delta R.T.: 0.000 min
 Response: 167359125
 Conc: 51.46 ng/ml



#3 AR-1016-1

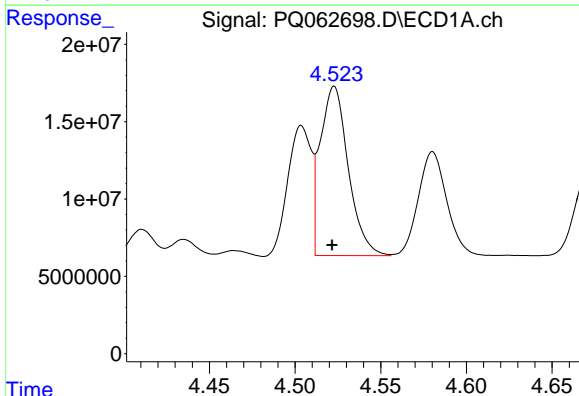
R.T.: 4.504 min
 Delta R.T.: 0.001 min
 Response: 80174355
 Conc: 544.72 ng/ml

Instrument :
 ECD_Q
 ClientSampleId :
 ICPQ072623



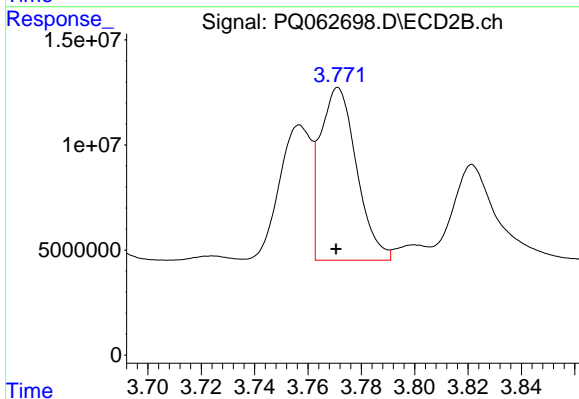
#3 AR-1016-1

R.T.: 3.757 min
 Delta R.T.: 0.001 min
 Response: 53321695
 Conc: 538.45 ng/ml



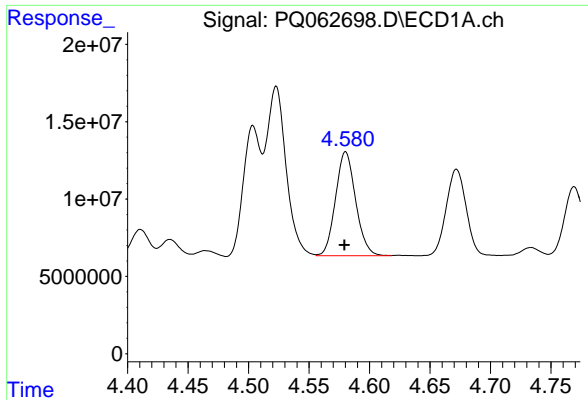
#4 AR-1016-2

R.T.: 4.523 min
 Delta R.T.: 0.001 min
 Response: 124871141
 Conc: 548.76 ng/ml



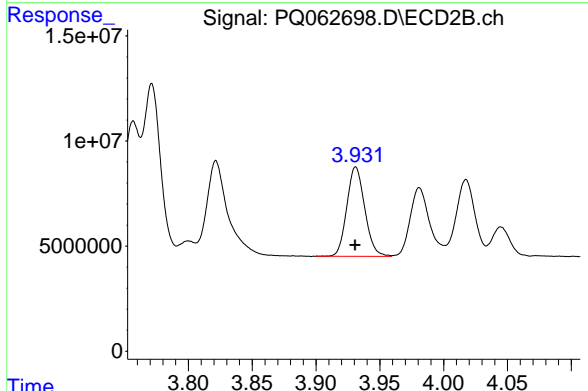
#4 AR-1016-2

R.T.: 3.771 min
 Delta R.T.: 0.000 min
 Response: 77553908
 Conc: 523.78 ng/ml

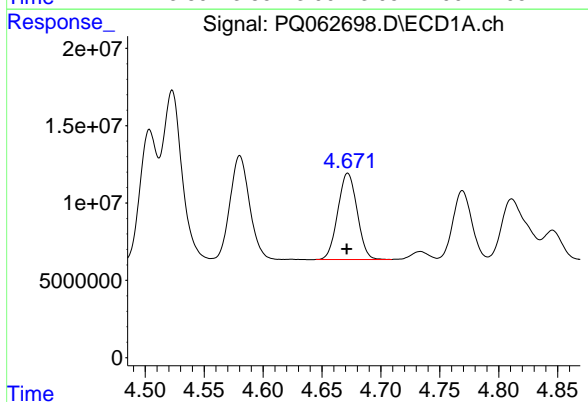


#5 AR-1016-3
 R.T.: 4.580 min
 Delta R.T.: 0.001 min
 Response: 77803129
 Conc: 551.16 ng/ml

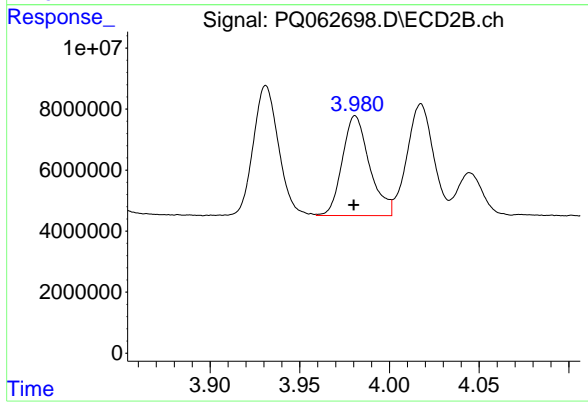
Instrument :
 ECD_Q
 ClientSampleId :
 ICVPQ072623



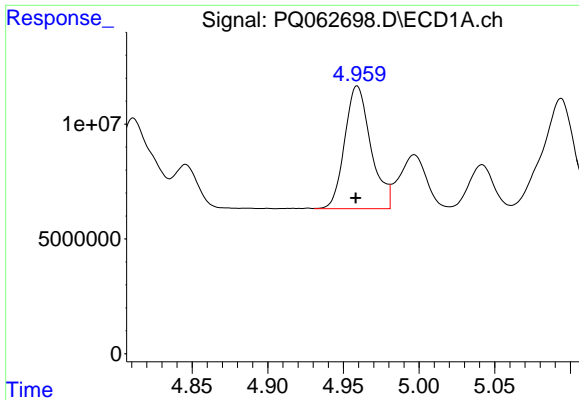
#5 AR-1016-3
 R.T.: 3.931 min
 Delta R.T.: 0.000 min
 Response: 41530384
 Conc: 526.53 ng/ml



#6 AR-1016-4
 R.T.: 4.672 min
 Delta R.T.: 0.000 min
 Response: 63615556
 Conc: 550.85 ng/ml



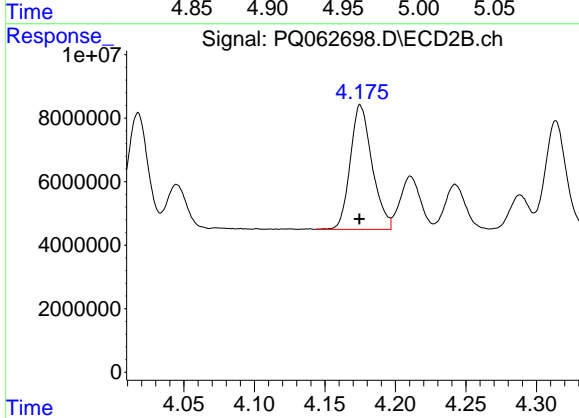
#6 AR-1016-4
 R.T.: 3.981 min
 Delta R.T.: 0.000 min
 Response: 34537103
 Conc: 526.59 ng/ml



#7 AR-1016-5

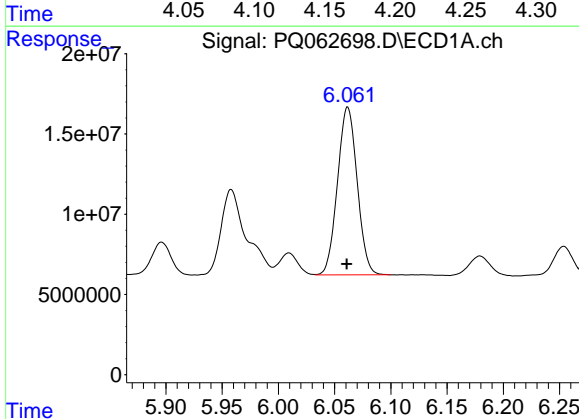
R.T.: 4.959 min
 Delta R.T.: 0.001 min
 Response: 64402542
 Conc: 555.53 ng/ml

Instrument :
 ECD_Q
 ClientSampleId :
 ICPQ072623



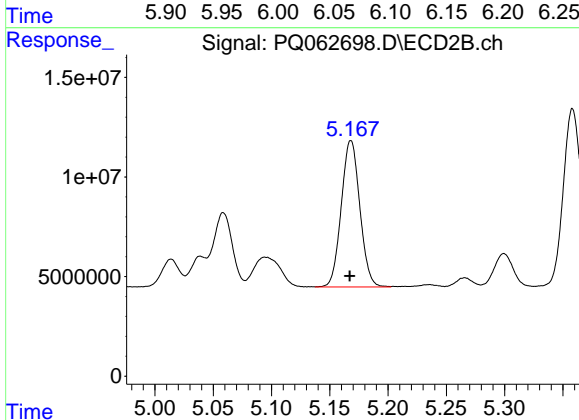
#7 AR-1016-5

R.T.: 4.175 min
 Delta R.T.: 0.000 min
 Response: 42337481
 Conc: 526.05 ng/ml



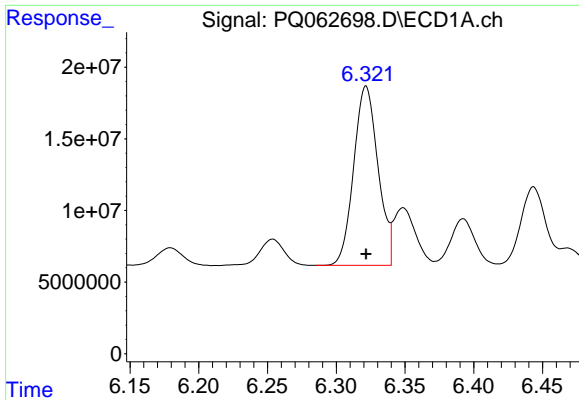
#31 AR-1260-1

R.T.: 6.062 min
 Delta R.T.: 0.000 min
 Response: 127544729
 Conc: 550.94 ng/ml



#31 AR-1260-1

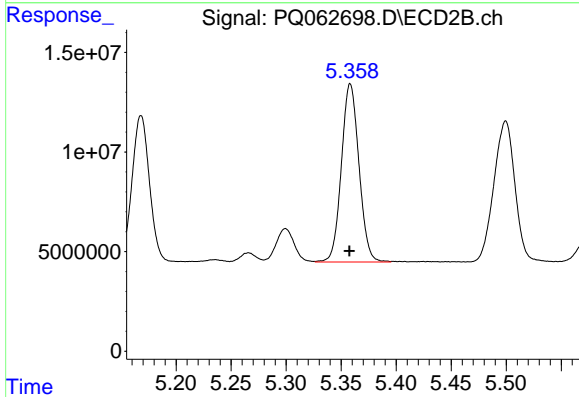
R.T.: 5.168 min
 Delta R.T.: 0.001 min
 Response: 81511522
 Conc: 528.99 ng/ml



#32 AR-1260-2

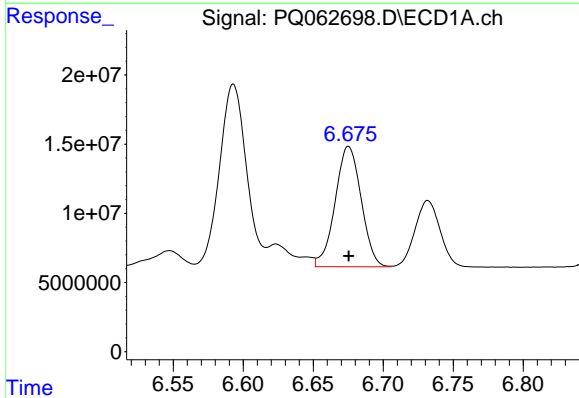
R.T.: 6.322 min
 Delta R.T.: 0.000 min
 Response: 154011893
 Conc: 548.21 ng/ml

Instrument :
 ECD_Q
 ClientSampleId :
 ICPQ072623



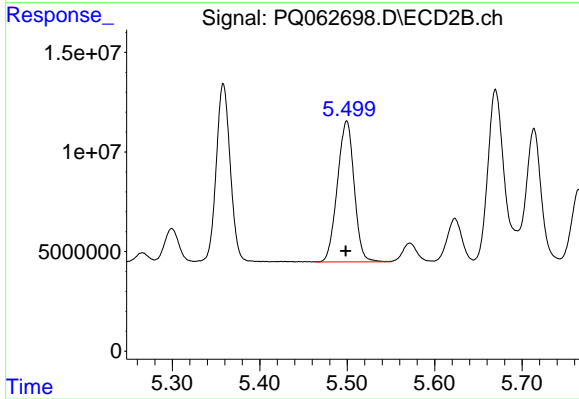
#32 AR-1260-2

R.T.: 5.358 min
 Delta R.T.: 0.000 min
 Response: 99371887
 Conc: 530.16 ng/ml



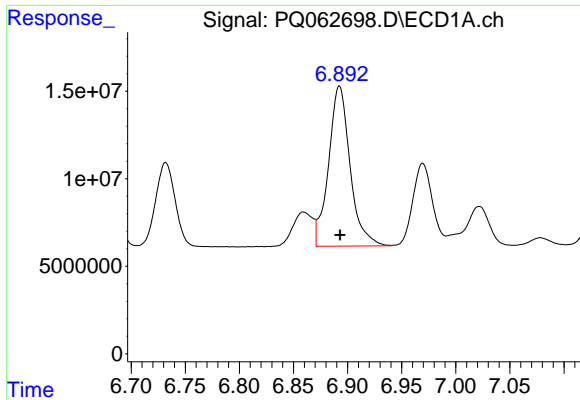
#33 AR-1260-3

R.T.: 6.675 min
 Delta R.T.: 0.000 min
 Response: 112592678
 Conc: 559.80 ng/ml



#33 AR-1260-3

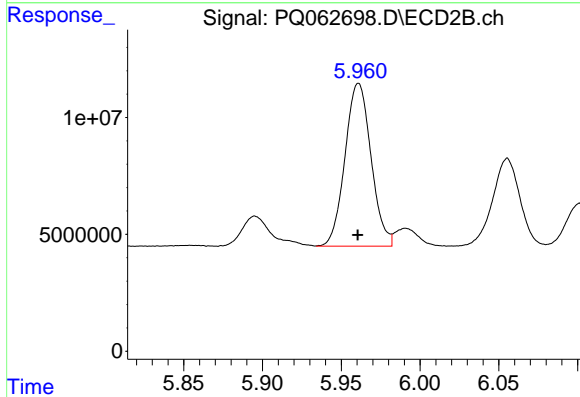
R.T.: 5.500 min
 Delta R.T.: 0.001 min
 Response: 94357490
 Conc: 529.24 ng/ml



#34 AR-1260-4

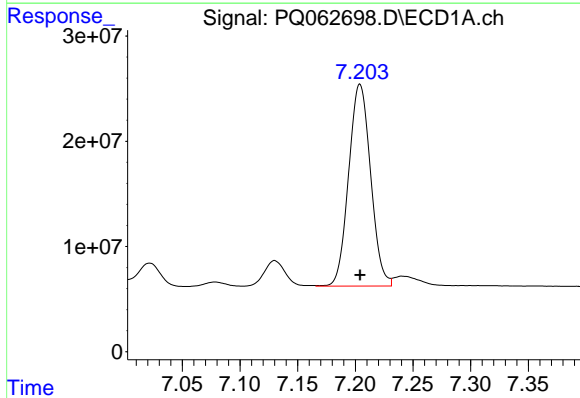
R.T.: 6.893 min
 Delta R.T.: 0.000 min
 Response: 126572919
 Conc: 550.86 ng/ml

Instrument :
 ECD_Q
 ClientSampleId :
 ICPQ072623



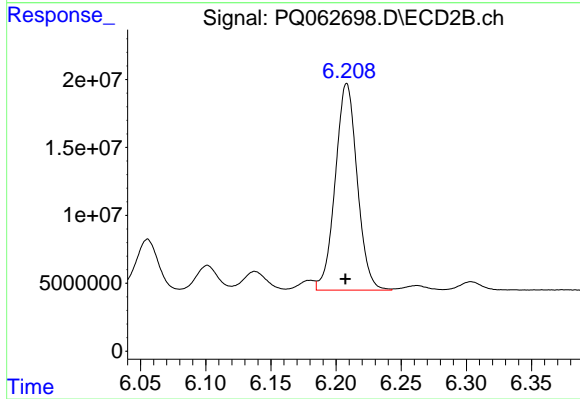
#34 AR-1260-4

R.T.: 5.961 min
 Delta R.T.: 0.000 min
 Response: 80063726
 Conc: 537.34 ng/ml



#35 AR-1260-5

R.T.: 7.204 min
 Delta R.T.: 0.000 min
 Response: 253606022
 Conc: 550.00 ng/ml



#35 AR-1260-5

R.T.: 6.208 min
 Delta R.T.: 0.001 min
 Response: 178338893
 Conc: 529.74 ng/ml