

Data Path : Z:\pestpcbsrv\HPCHEM1\ECD\_Q\Data\PQ072719\  
 Data File : PQ041701.D  
 Signal(s) : Signal #1: ECD1A.ch Signal #2: ECD2B.ch  
 Acq On : 28 Jul 2019 18:26  
 Operator : SM\AJ  
 Sample : AR1232ICC400  
 Misc :  
 ALS Vial : 65 Sample Multiplier: 1

Integration File signal 1: autoint1.e  
 Integration File signal 2: autoint2.e  
 Quant Time: Jul 29 00:09:18 2019  
 Quant Method : Z:\pestpcbsrv\HPCHEM1\ECD\_Q\Method\PQ072719CLP.M  
 Quant Title : GC EXTRACTABLES  
 QLast Update : Mon Jul 29 00:08:04 2019  
 Response via : Initial Calibration  
 Integrator: ChemStation

Volume Inj. : 1 µl  
 Signal #1 Phase : ZB MR1 Signal #2 Phase: ZB MR2  
 Signal #1 Info : 30Mx0.32mmx 0.5µm Signal #2 Info : 30M x 0.32mm x 0.25µm

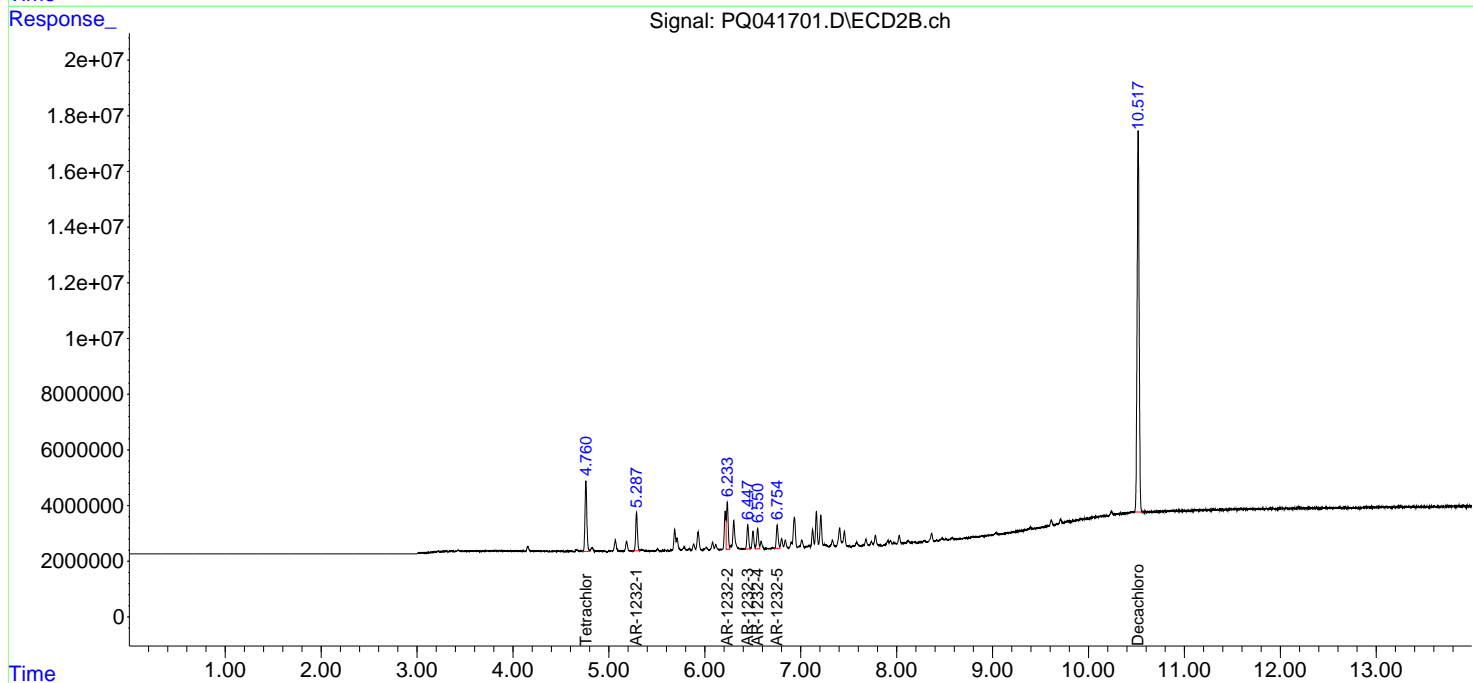
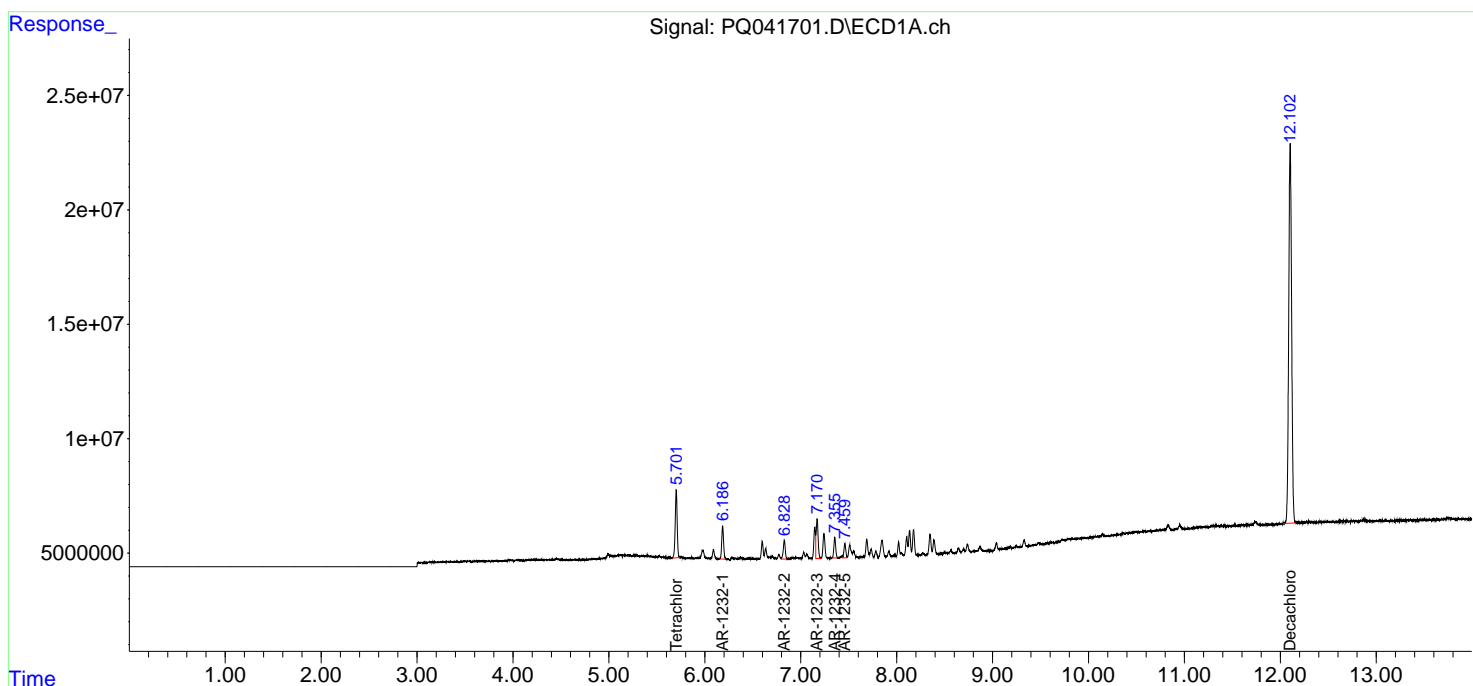
Compound	RT#1	RT#2	Resp#1	Resp#2	ng/ml	ng/ml
-----						
System Monitoring Compounds						
1) SA Tetrachlo...	5.702	4.760	42080682	34035558	20.000	20.000
2) SA Decachlor...	12.103	10.518	349.1E6	202.7E6	40.000	40.000
Target Compounds						
11) L3 AR-1232-1	6.185	5.288	19370100	17296914	400.000	400.000
12) L3 AR-1232-2	6.829	6.234	11740753	21585173	400.000	400.000
13) L3 AR-1232-3	7.171	6.447	25022342	11024077	400.000	400.000
14) L3 AR-1232-4	7.355	6.551	11815647	10087421	400.000	400.000
15) L3 AR-1232-5	7.460	6.754	8345554	11120212	400.000	400.000
-----						

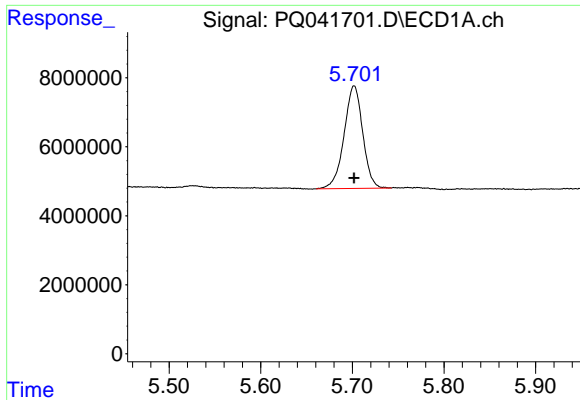
(f)=RT Delta > 1/2 Window (#)=Amounts differ by > 25% (m)=manual int.

Data Path : Z:\pestpcbsrv\HPCHEM1\ECD\_Q\Data\PQ072719\  
 Data File : PQ041701.D  
 Signal(s) : Signal #1: ECD1A.ch Signal #2: ECD2B.ch  
 Acq On : 28 Jul 2019 18:26  
 Operator : SM\AJ  
 Sample : AR1232ICC400  
 Misc :  
 ALS Vial : 65 Sample Multiplier: 1

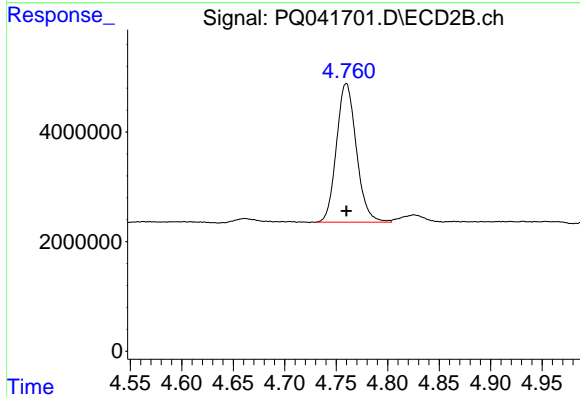
Integration File signal 1: autoint1.e  
 Integration File signal 2: autoint2.e  
 Quant Time: Jul 29 00:09:18 2019  
 Quant Method : Z:\pestpcbsrv\HPCHEM1\ECD\_Q\Method\PQ072719CLP.M  
 Quant Title : GC EXTRACTABLES  
 QLast Update : Mon Jul 29 00:08:04 2019  
 Response via : Initial Calibration  
 Integrator: ChemStation

Volume Inj. : 1 µl  
 Signal #1 Phase : ZB MR1 Signal #2 Phase: ZB MR2  
 Signal #1 Info : 30Mx0.32mmx 0.5µm Signal #2 Info : 30M x 0.32mm x 0.25µm

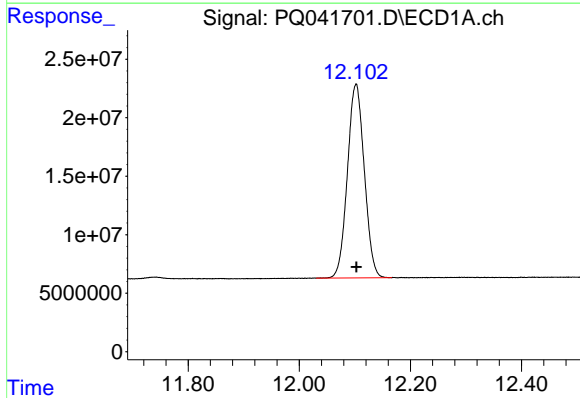




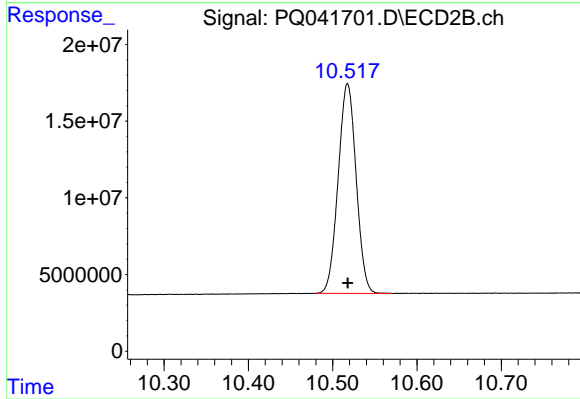
#1 Tetrachloro-m-xylene  
R.T.: 5.702 min  
Delta R.T.: 0.000 min  
Response: 42080682  
Conc: 20.00 ng/ml



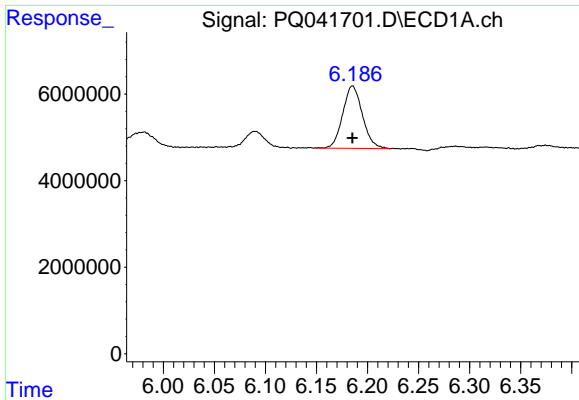
#1 Tetrachloro-m-xylene  
R.T.: 4.760 min  
Delta R.T.: 0.000 min  
Response: 34035558  
Conc: 20.00 ng/ml



#2 Decachlorobiphenyl  
R.T.: 12.103 min  
Delta R.T.: 0.000 min  
Response: 349108129  
Conc: 40.00 ng/ml

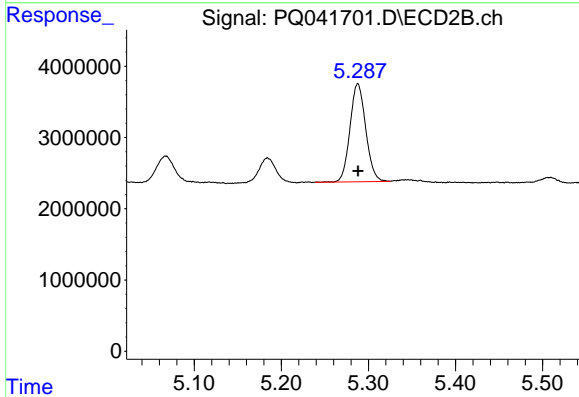


#2 Decachlorobiphenyl  
R.T.: 10.518 min  
Delta R.T.: 0.000 min  
Response: 202730529  
Conc: 40.00 ng/ml



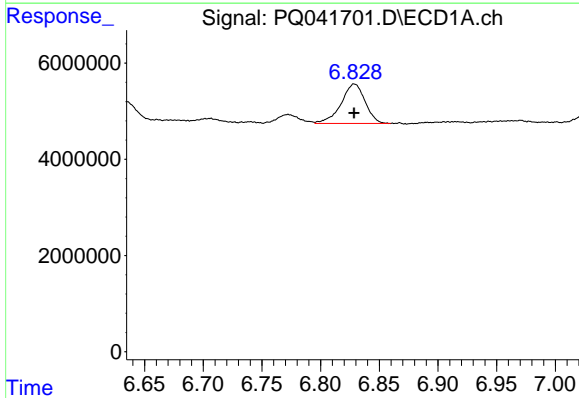
#11 AR-1232-1

R.T.: 6.185 min  
Delta R.T.: 0.000 min  
Response: 19370100  
Conc: 400.00 ng/ml



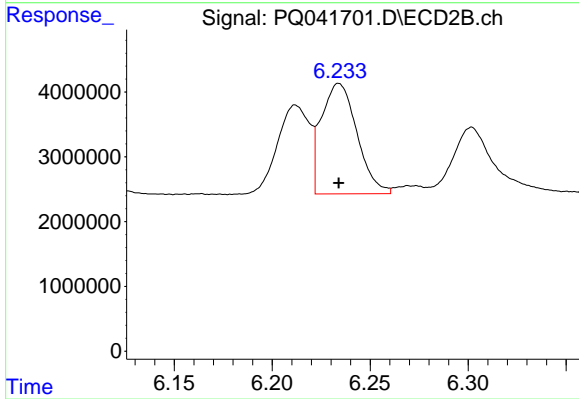
#11 AR-1232-1

R.T.: 5.288 min  
Delta R.T.: 0.000 min  
Response: 17296914  
Conc: 400.00 ng/ml



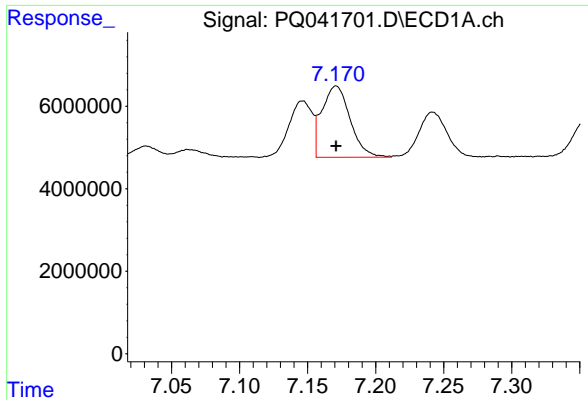
#12 AR-1232-2

R.T.: 6.829 min  
Delta R.T.: 0.000 min  
Response: 11740753  
Conc: 400.00 ng/ml



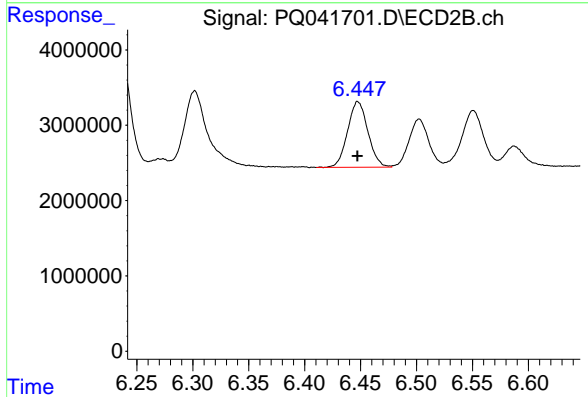
#12 AR-1232-2

R.T.: 6.234 min  
Delta R.T.: 0.000 min  
Response: 21585173  
Conc: 400.00 ng/ml



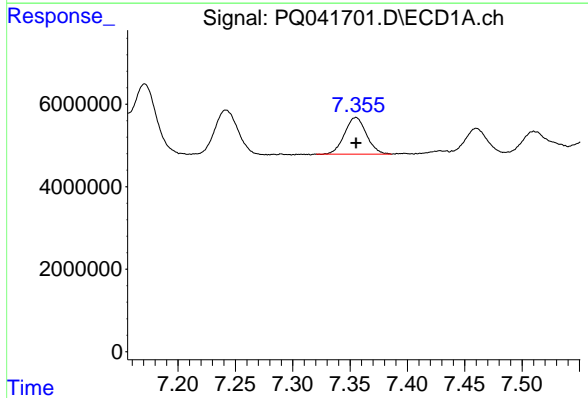
#13 AR-1232-3

R.T.: 7.171 min  
 Delta R.T.: 0.000 min  
 Response: 25022342  
 Conc: 400.00 ng/ml



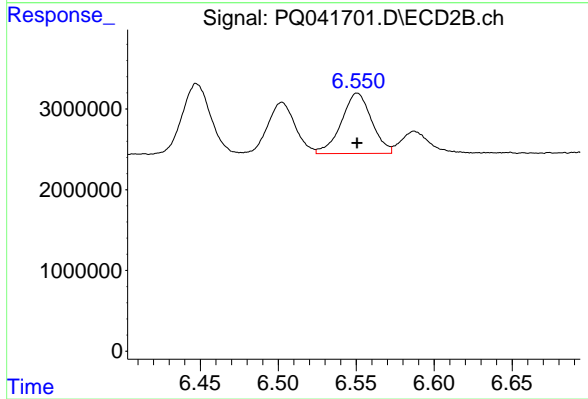
#13 AR-1232-3

R.T.: 6.447 min  
 Delta R.T.: 0.000 min  
 Response: 11024077  
 Conc: 400.00 ng/ml



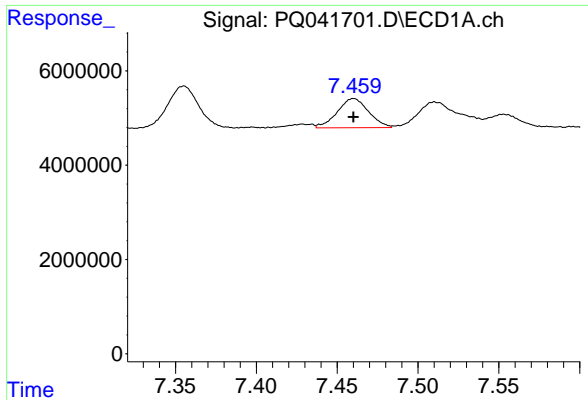
#14 AR-1232-4

R.T.: 7.355 min  
 Delta R.T.: 0.000 min  
 Response: 11815647  
 Conc: 400.00 ng/ml



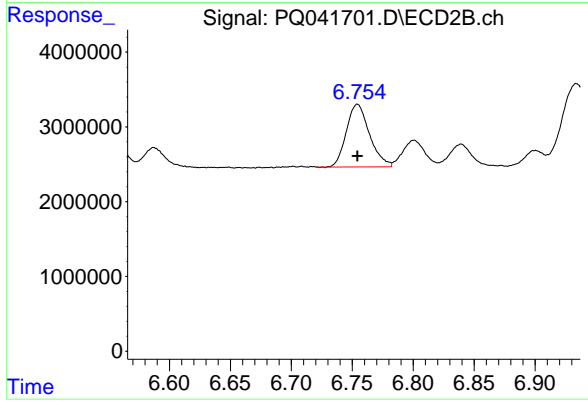
#14 AR-1232-4

R.T.: 6.551 min  
 Delta R.T.: 0.000 min  
 Response: 10087421  
 Conc: 400.00 ng/ml



#15 AR-1232-5

R.T.: 7.460 min  
Delta R.T.: 0.000 min  
Response: 8345554  
Conc: 400.00 ng/ml



#15 AR-1232-5

R.T.: 6.754 min  
Delta R.T.: 0.000 min  
Response: 11120212  
Conc: 400.00 ng/ml