

Data Path : Z:\pestpcbsrv\HPCHEM1\ECD_Q\Data\PQ072921\
 Data File : PQ054156.D
 Signal(s) : Signal #1: ECD1A.ch Signal #2: ECD2B.ch
 Acq On : 29 Jul 2021 22:43
 Operator : AJ\MA
 Sample : M2940-02
 Misc : AR1242 LOQ 50 PPB
 ALS Vial : 26 Sample Multiplier: 1

Instrument :
 ECD_Q
 ClientSampleId :
 LOQ-SOIL-02-QT3-2021

Integration File signal 1: autoint1.e
 Integration File signal 2: autoint2.e
 Quant Time: Jul 30 04:20:56 2021
 Quant Method : Z:\pestpcbsrv\HPCHEM1\ECD_Q\Method\PQ072921.M
 Quant Title : GC EXTRACTABLES
 QLast Update : Fri Jul 30 02:37:02 2021
 Response via : Initial Calibration
 Integrator: ChemStation

Volume Inj. : 2 µl
 Signal #1 Phase : ZB-MR1 Signal #2 Phase: ZB-MR2
 Signal #1 Info : 30Mx0.32mmx 0.50µ Signal #2 Info : 30M x 0.32mm x 0.25µm

Compound	RT#1	RT#2	Resp#1	Resp#2	ng/ml	ng/ml
System Monitoring Compounds						
1) SA Tetrachlo...	5.203	4.208	405.4E6	235.5E6	17.359	16.656
2) SA Decachlor...	11.377	9.547	293.2E6	232.4E6	17.428	18.421
Target Compounds						
3) L1 AR-1016-1	6.531	5.472	27067022	15622408	36.927	34.510
4) L1 AR-1016-2	6.555	5.492	38816892	27417540	34.557	36.989
5) L1 AR-1016-3	6.622	5.685	26563440	13085746	38.509	36.298
6) L1 AR-1016-4	6.729	5.735	21220584	11564025	37.302	40.516
7) L1 AR-1016-5	7.041	5.966	23559802	14145389	43.525	38.823
8) L2 AR-1221-1	5.428f	4.466	2077273	1194647	8.586	8.385
9) L2 AR-1221-2	5.560	4.566	9447425	4043366	52.154	38.329 #
10) L2 AR-1221-3	5.644	4.656	14185886	8274563	24.792	23.580
11) L3 AR-1232-1	5.644	4.656	14185886	8274563	36.312	35.450
12) L3 AR-1232-2	6.233	5.492	21042954	27417540	90.585	94.666
13) L3 AR-1232-3	6.555	5.685	38816892	13085746	90.461	98.630
14) L3 AR-1232-4	6.729	5.780	21220584	12945821	97.979	113.451
15) L3 AR-1232-5	6.820	5.966	20235689	14145389	124.516	110.070
16) L4 AR-1242-1	6.531	5.472	27067022	15622408	58.944	57.457
17) L4 AR-1242-2	6.555	5.492	38816892	27417540	55.076	58.253
18) L4 AR-1242-3	6.622	5.685	26563440	13085746	61.016	59.314
19) L4 AR-1242-4	6.729	5.780	21220584	12945821	59.016	59.840
20) L4 AR-1242-5	7.511	6.345	21700709	18725437	58.946	63.122
21) L5 AR-1248-1	6.531	5.472	27067022	15622408	72.962	69.243
22) L5 AR-1248-2	6.820	5.735	20235689	11564025	38.633	35.234
23) L5 AR-1248-3	7.041	5.780	23559802	12945821	39.698	39.148
24) L5 AR-1248-4	7.471	5.966	19981314	14145389	30.080	35.642
25) L5 AR-1248-5	7.511	6.389	21700709	17138368	33.329	43.001 #
26) L6 AR-1254-1	7.438	6.345	16899309	18725437	23.911	28.001
27) L6 AR-1254-2	7.676	6.503	18356168	8439417	16.764	13.726
28) L6 AR-1254-3	8.050	6.925	6169376	10467519	5.246	10.841 #
29) L6 AR-1254-4	8.347	7.164	6188014	8077360	7.021	12.120 #
30) L6 AR-1254-5	8.775	7.593	2600286	4789477	2.665	4.911 #
31) L7 AR-1260-1	0.000	7.069	0	8345044	N.D.	11.133 #
32) L7 AR-1260-2	8.487	7.256	3025873	2806044	2.665	2.686
33) L7 AR-1260-3	0.000	7.404	0	5678093	N.D.	6.524 #
34) L7 AR-1260-4	0.000	7.894	0	279384	N.D.	0.449 #
35) L7 AR-1260-5	0.000	8.144	0	1444085	N.D.	0.843 #
36) L8 AR-1262-1	0.000	7.593	0	4789477	N.D.	10.598 #
37) L8 AR-1262-2	0.000	8.144	0	1444085	N.D.	0.767 #
40) L8 AR-1262-5	0.000	8.967f	0	972912	N.D.	1.686 #
43) L9 AR-1268-3	0.000	8.705	0	1318507	N.D.	0.789 #
44) L9 AR-1268-4	0.000	8.967f	0	972912	N.D.	1.492 #
45) L9 AR-1268-5	0.000	9.289	0	1336127	N.D.	0.284 #

Data Path : Z:\pestpcbsrv\HPCHEM1\ECD_Q\Data\PQ072921\
 Data File : PQ054156.D
 Signal(s) : Signal #1: ECD1A.ch Signal #2: ECD2B.ch
 Acq On : 29 Jul 2021 22:43
 Operator : AJ\MA
 Sample : M2940-02
 Misc : AR1242 LOQ 50 PPB
 ALS Vial : 26 Sample Multiplier: 1

Instrument :
 ECD_Q
ClientSampleId :
 LOQ-SOIL-02-QT3-2021

Integration File signal 1: autoint1.e
 Integration File signal 2: autoint2.e
 Quant Time: Jul 30 04:20:56 2021
 Quant Method : Z:\pestpcbsrv\HPCHEM1\ECD_Q\Method\PQ072921.M
 Quant Title : GC EXTRACTABLES
 QLast Update : Fri Jul 30 02:37:02 2021
 Response via : Initial Calibration
 Integrator: ChemStation

Volume Inj. : 2 µl
 Signal #1 Phase : ZB-MR1 Signal #2 Phase: ZB-MR2
 Signal #1 Info : 30Mx0.32mmx 0.50µ Signal #2 Info : 30M x 0.32mm x 0.25µm

Compound	RT#1	RT#2	Resp#1	Resp#2	ng/ml	ng/ml

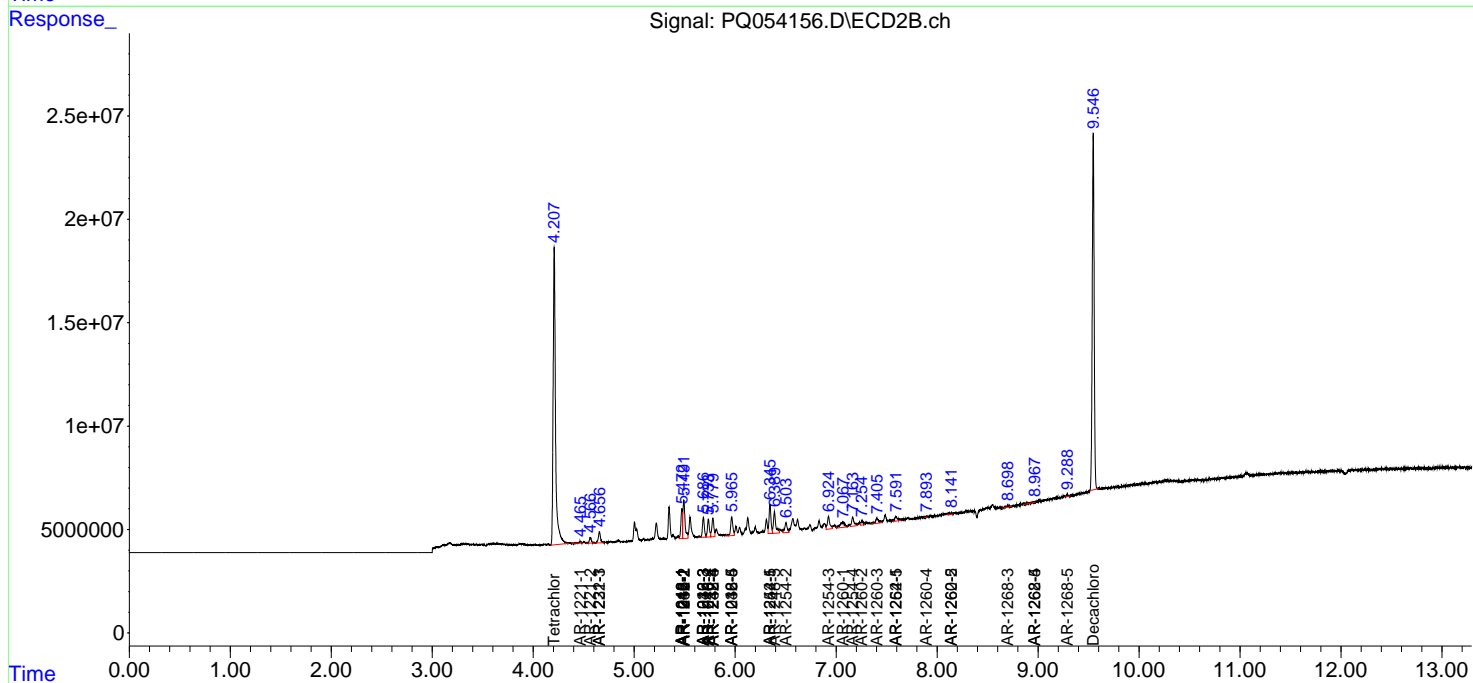
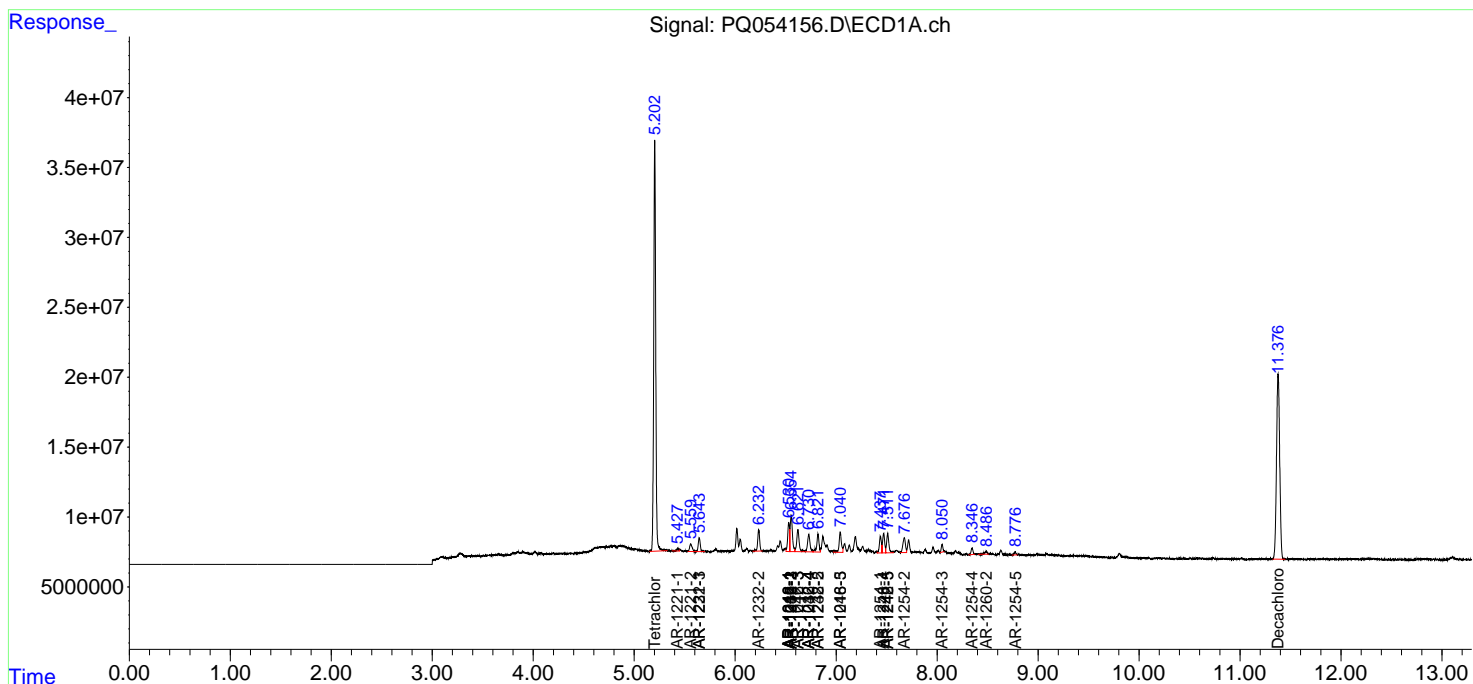
(f)=RT Delta > 1/2 Window (#)=Amounts differ by > 25% (m)=manual int.

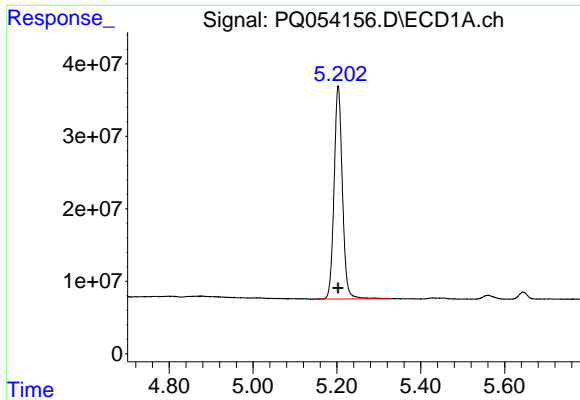
Data Path : Z:\pestpcbsrv\HPCHEM1\ECD_Q\Data\PQ072921\
 Data File : PQ054156.D
 Signal(s) : Signal #1: ECD1A.ch Signal #2: ECD2B.ch
 Acq On : 29 Jul 2021 22:43
 Operator : AJ\MA
 Sample : M2940-02
 Misc : AR1242 LOQ 50 PPB
 ALS Vial : 26 Sample Multiplier: 1

Instrument :
 ECD_Q
 ClientSampleId :
 LOQ-SOIL-02-QT3-2021

Integration File signal 1: autoint1.e
 Integration File signal 2: autoint2.e
 Quant Time: Jul 30 04:20:56 2021
 Quant Method : Z:\pestpcbsrv\HPCHEM1\ECD_Q\Method\PQ072921.M
 Quant Title : GC EXTRACTABLES
 QLast Update : Fri Jul 30 02:37:02 2021
 Response via : Initial Calibration
 Integrator: ChemStation

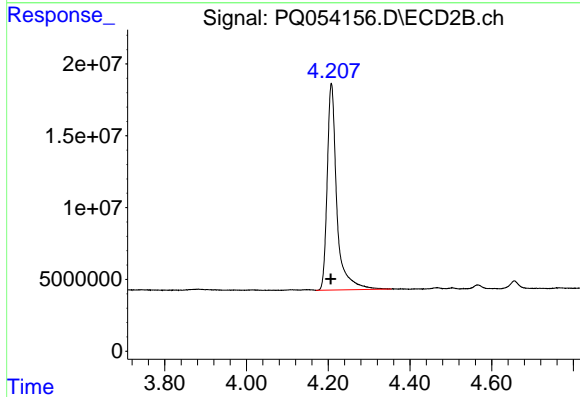
Volume Inj. : 2 µl
 Signal #1 Phase : ZB-MR1 Signal #2 Phase: ZB-MR2
 Signal #1 Info : 30Mx0.32mmx 0.50µ Signal #2 Info : 30M x 0.32mm x 0.25µm



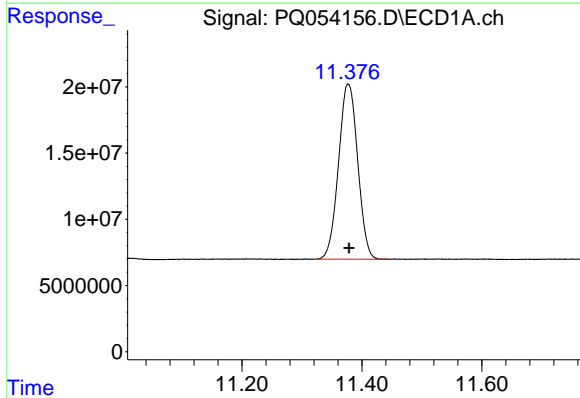


#1 Tetrachloro-m-xylene
 R.T.: 5.203 min
 Delta R.T.: 0.000 min
 Response: 405381305
 Conc: 17.36 ng/ml

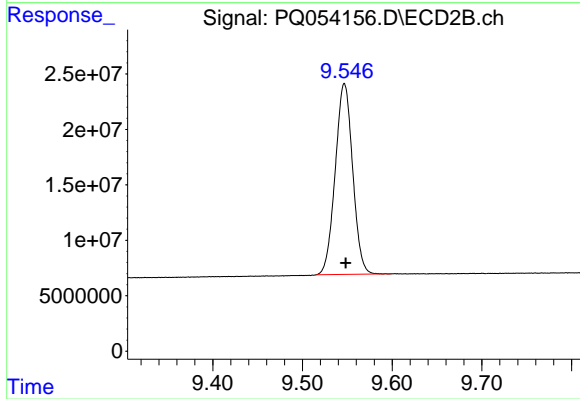
Instrument :
 ECD_Q
 ClientSampleId :
 LOQ-SOIL-02-QT3-2021



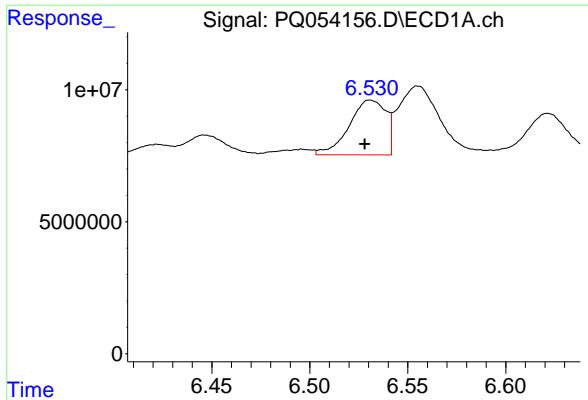
#1 Tetrachloro-m-xylene
 R.T.: 4.208 min
 Delta R.T.: 0.002 min
 Response: 235472639
 Conc: 16.66 ng/ml



#2 Decachlorobiphenyl
 R.T.: 11.377 min
 Delta R.T.: -0.002 min
 Response: 293237661
 Conc: 17.43 ng/ml



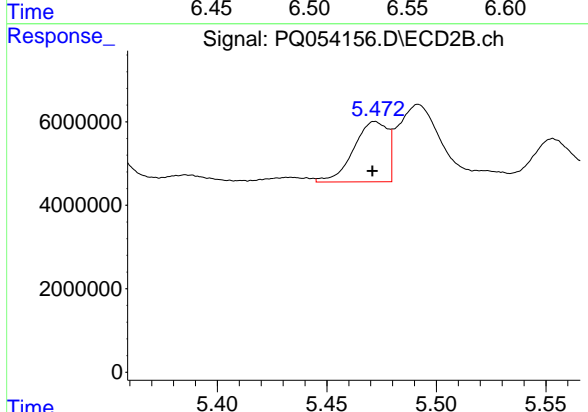
#2 Decachlorobiphenyl
 R.T.: 9.547 min
 Delta R.T.: -0.002 min
 Response: 232367908
 Conc: 18.42 ng/ml



#3 AR-1016-1

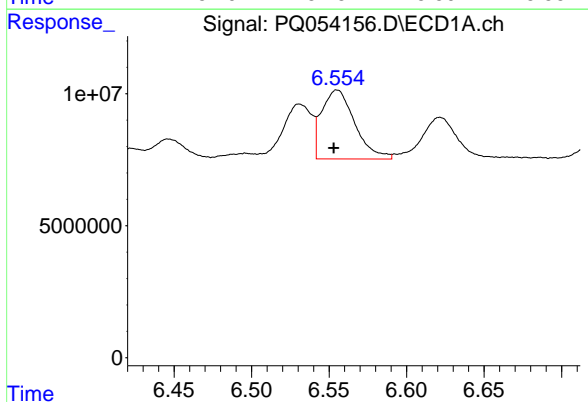
R.T.: 6.531 min
 Delta R.T.: 0.003 min
 Response: 27067022
 Conc: 36.93 ng/ml

Instrument :
 ECD_Q
ClientSampleId :
 LOQ-SOIL-02-QT3-2021



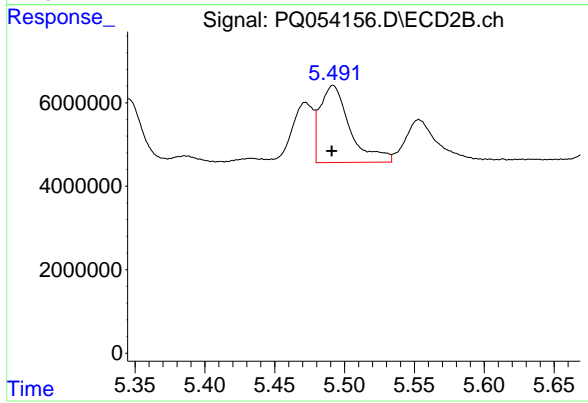
#3 AR-1016-1

R.T.: 5.472 min
 Delta R.T.: 0.001 min
 Response: 15622408
 Conc: 34.51 ng/ml



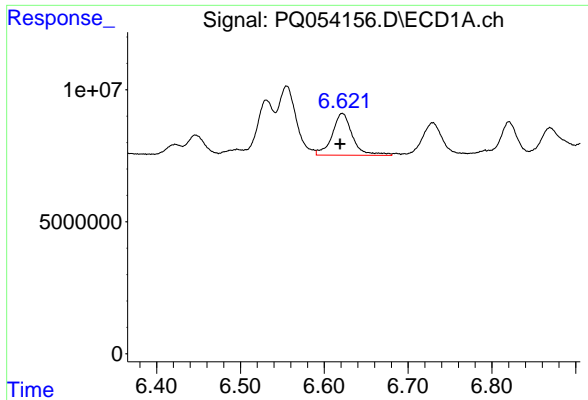
#4 AR-1016-2

R.T.: 6.555 min
 Delta R.T.: 0.002 min
 Response: 38816892
 Conc: 34.56 ng/ml



#4 AR-1016-2

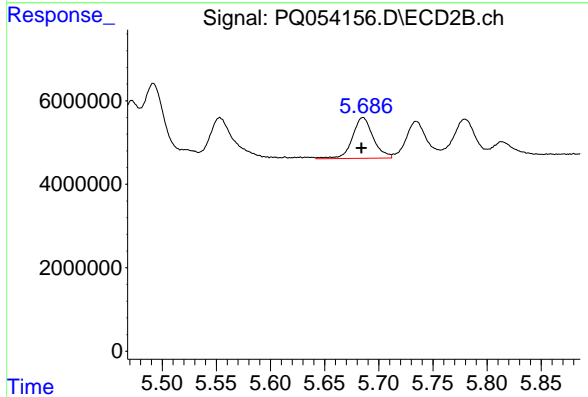
R.T.: 5.492 min
 Delta R.T.: 0.001 min
 Response: 27417540
 Conc: 36.99 ng/ml



#5 AR-1016-3

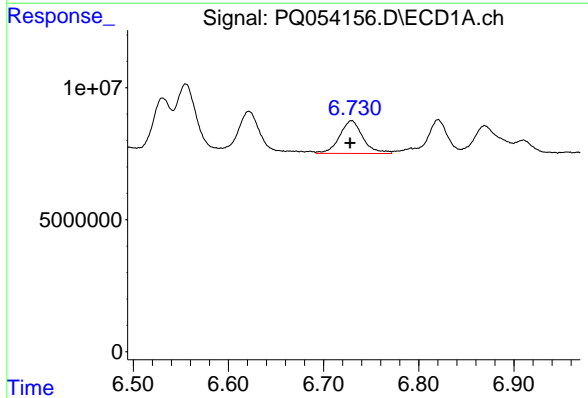
R.T.: 6.622 min
 Delta R.T.: 0.003 min
 Response: 26563440
 Conc: 38.51 ng/ml

Instrument :
 ECD_Q
 ClientSampleId :
 LOQ-SOIL-02-QT3-2021



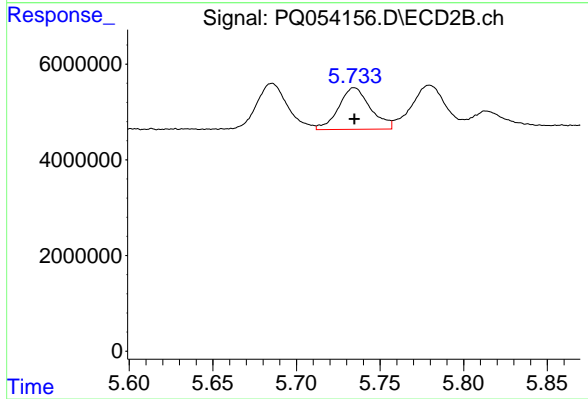
#5 AR-1016-3

R.T.: 5.685 min
 Delta R.T.: 0.001 min
 Response: 13085746
 Conc: 36.30 ng/ml



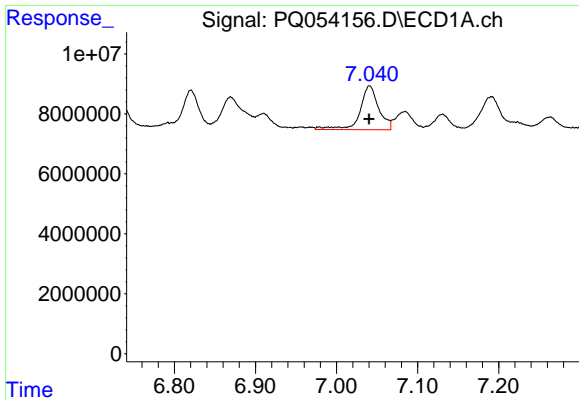
#6 AR-1016-4

R.T.: 6.729 min
 Delta R.T.: 0.002 min
 Response: 21220584
 Conc: 37.30 ng/ml



#6 AR-1016-4

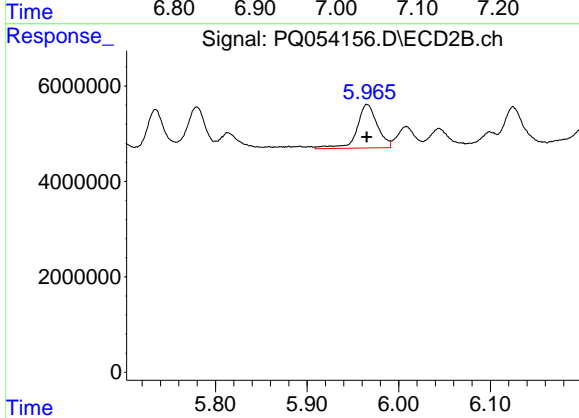
R.T.: 5.735 min
 Delta R.T.: 0.000 min
 Response: 11564025
 Conc: 40.52 ng/ml



#7 AR-1016-5

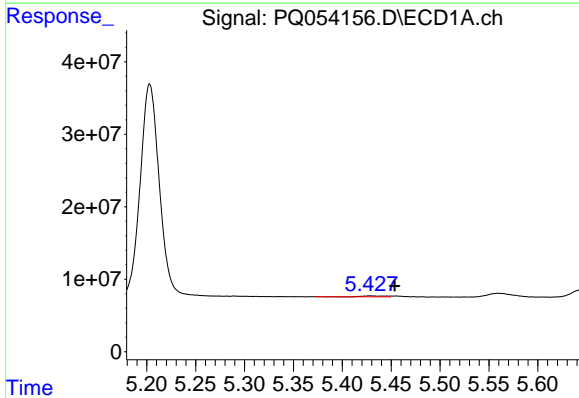
R.T.: 7.041 min
 Delta R.T.: 0.000 min
 Response: 23559802
 Conc: 43.53 ng/ml

Instrument :
 ECD_Q
 ClientSampleId :
 LOQ-SOIL-02-QT3-2021



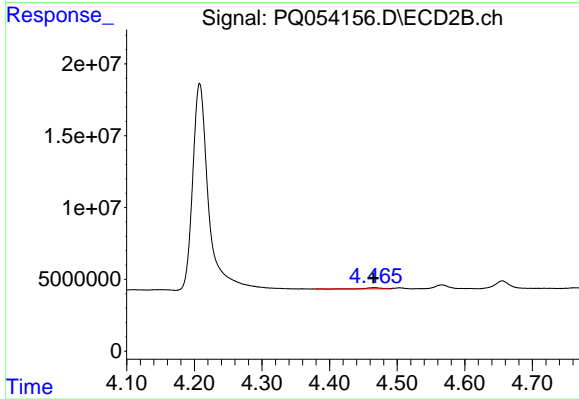
#7 AR-1016-5

R.T.: 5.966 min
 Delta R.T.: 0.000 min
 Response: 14145389
 Conc: 38.82 ng/ml



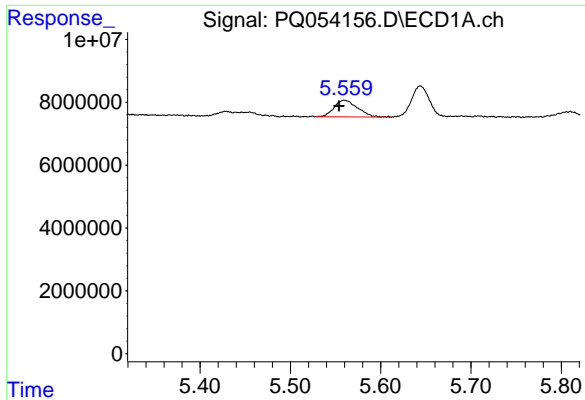
#8 AR-1221-1

R.T.: 5.428 min
 Delta R.T.: -0.025 min
 Response: 2077273
 Conc: 8.59 ng/ml



#8 AR-1221-1

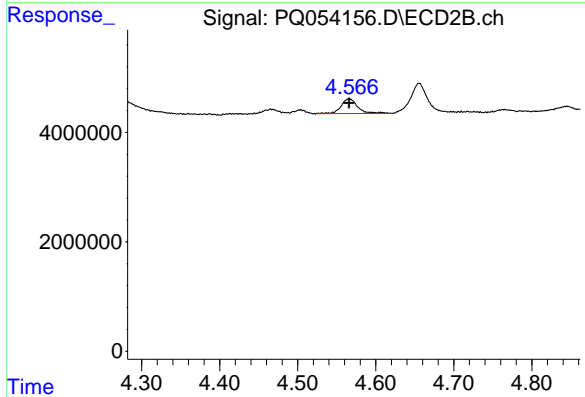
R.T.: 4.466 min
 Delta R.T.: 0.000 min
 Response: 1194647
 Conc: 8.38 ng/ml



#9 AR-1221-2

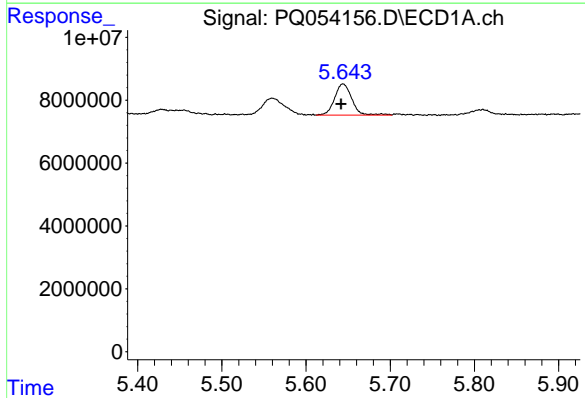
R.T.: 5.560 min
 Delta R.T.: 0.006 min
 Response: 9447425
 Conc: 52.15 ng/ml

Instrument :
 ECD_Q
ClientSampled :
 LOQ-SOIL-02-QT3-2021



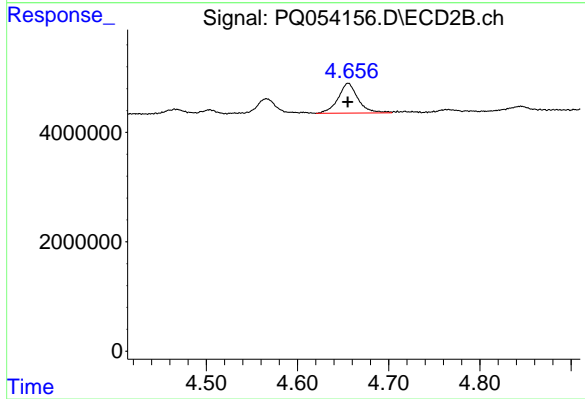
#9 AR-1221-2

R.T.: 4.566 min
 Delta R.T.: 0.000 min
 Response: 4043366
 Conc: 38.33 ng/ml



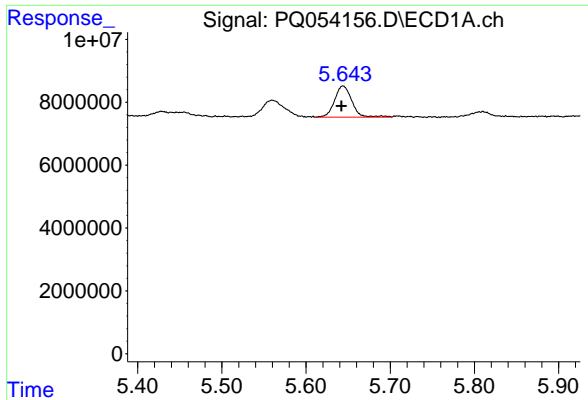
#10 AR-1221-3

R.T.: 5.644 min
 Delta R.T.: 0.003 min
 Response: 14185886
 Conc: 24.79 ng/ml



#10 AR-1221-3

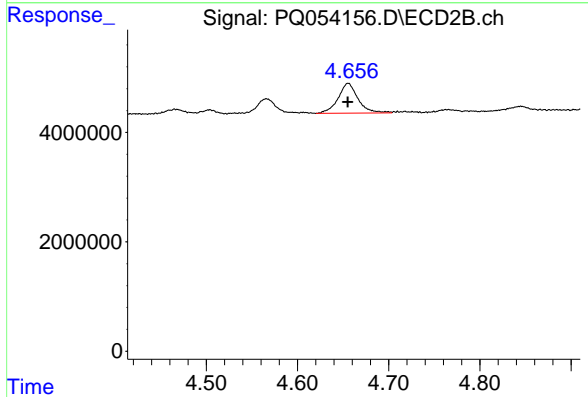
R.T.: 4.656 min
 Delta R.T.: 0.000 min
 Response: 8274563
 Conc: 23.58 ng/ml



#11 AR-1232-1

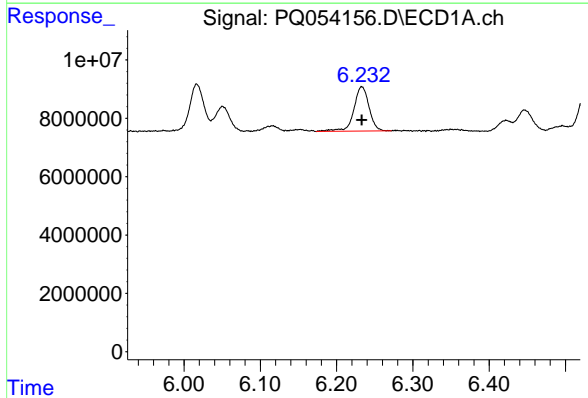
R.T.: 5.644 min
 Delta R.T.: 0.002 min
 Response: 14185886
 Conc: 36.31 ng/ml

Instrument :
 ECD_Q
 ClientSampled :
 LOQ-SOIL-02-QT3-2021



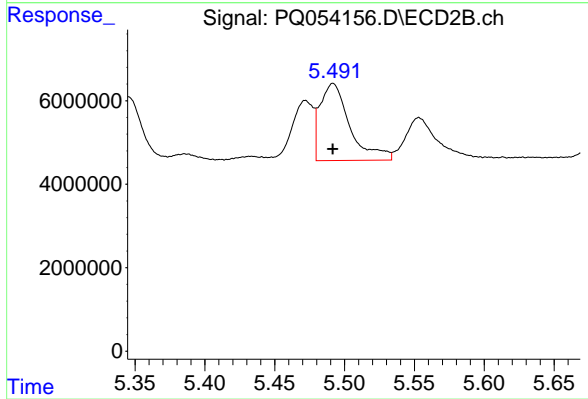
#11 AR-1232-1

R.T.: 4.656 min
 Delta R.T.: 0.000 min
 Response: 8274563
 Conc: 35.45 ng/ml



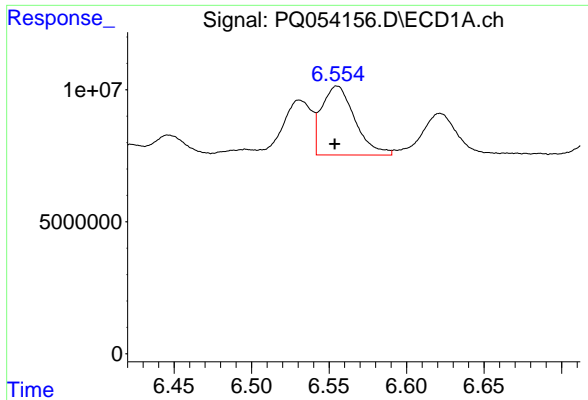
#12 AR-1232-2

R.T.: 6.233 min
 Delta R.T.: 0.000 min
 Response: 21042954
 Conc: 90.58 ng/ml



#12 AR-1232-2

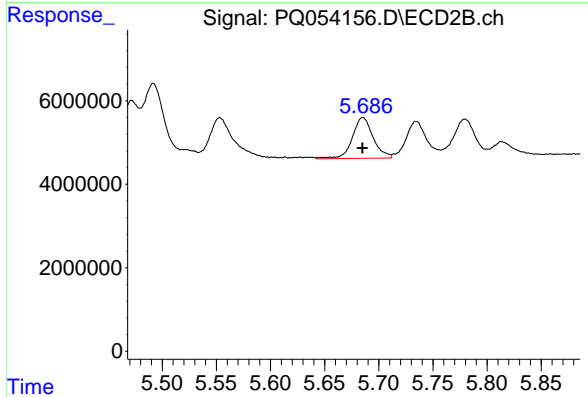
R.T.: 5.492 min
 Delta R.T.: 0.000 min
 Response: 27417540
 Conc: 94.67 ng/ml



#13 AR-1232-3

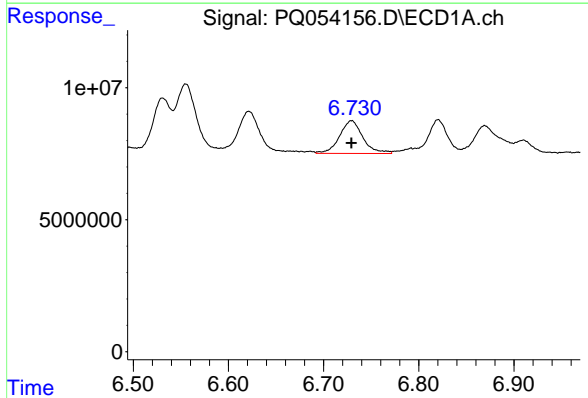
R.T.: 6.555 min
 Delta R.T.: 0.002 min
 Response: 38816892
 Conc: 90.46 ng/ml

Instrument :
 ECD_Q
 ClientSampleId :
 LOQ-SOIL-02-QT3-2021



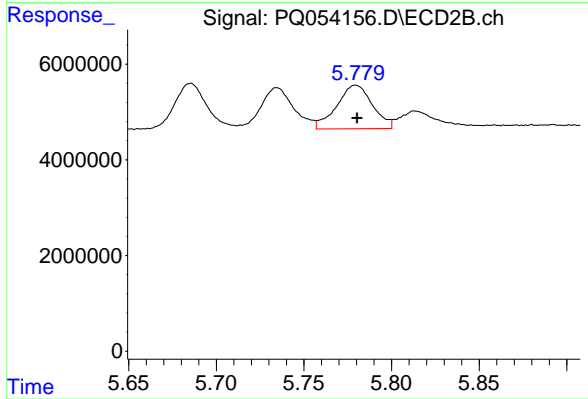
#13 AR-1232-3

R.T.: 5.685 min
 Delta R.T.: 0.000 min
 Response: 13085746
 Conc: 98.63 ng/ml



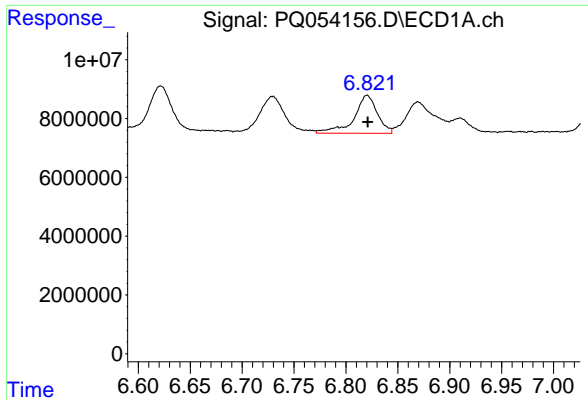
#14 AR-1232-4

R.T.: 6.729 min
 Delta R.T.: 0.000 min
 Response: 21220584
 Conc: 97.98 ng/ml



#14 AR-1232-4

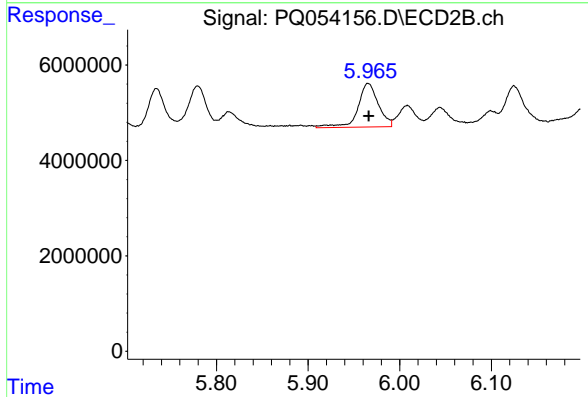
R.T.: 5.780 min
 Delta R.T.: 0.000 min
 Response: 12945821
 Conc: 113.45 ng/ml



#15 AR-1232-5

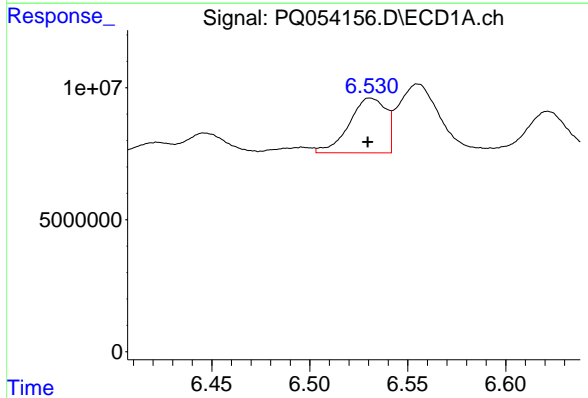
R.T.: 6.820 min
 Delta R.T.: 0.000 min
 Response: 20235689
 Conc: 124.52 ng/ml

Instrument :
 ECD_Q
 ClientSampleId :
 LOQ-SOIL-02-QT3-2021



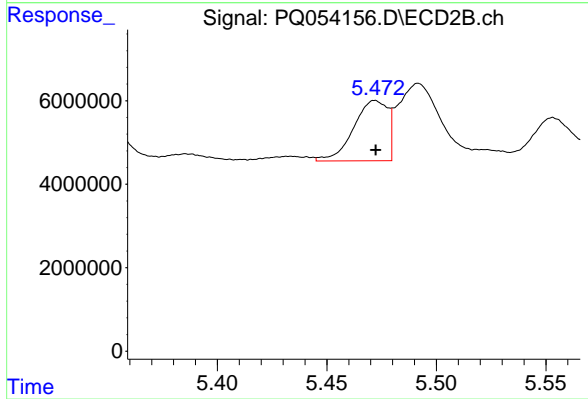
#15 AR-1232-5

R.T.: 5.966 min
 Delta R.T.: 0.000 min
 Response: 14145389
 Conc: 110.07 ng/ml



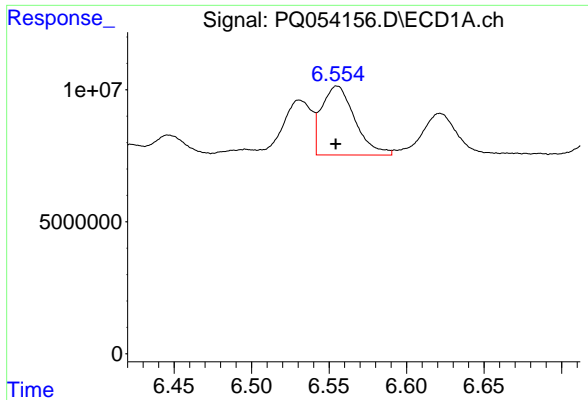
#16 AR-1242-1

R.T.: 6.531 min
 Delta R.T.: 0.001 min
 Response: 27067022
 Conc: 58.94 ng/ml



#16 AR-1242-1

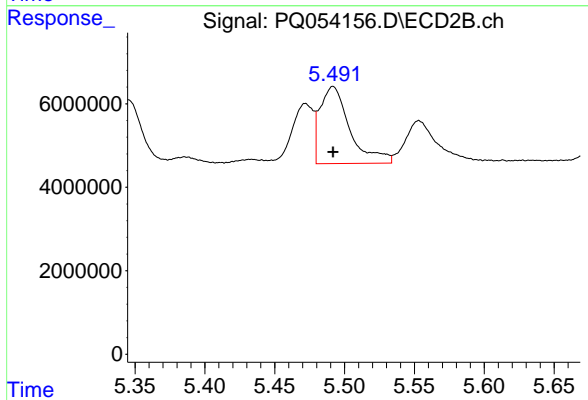
R.T.: 5.472 min
 Delta R.T.: 0.000 min
 Response: 15622408
 Conc: 57.46 ng/ml



#17 AR-1242-2

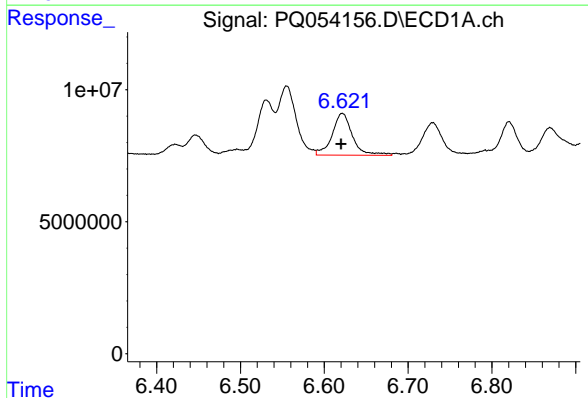
R.T.: 6.555 min
 Delta R.T.: 0.000 min
 Response: 38816892
 Conc: 55.08 ng/ml

Instrument :
 ECD_Q
 ClientSampleId :
 LOQ-SOIL-02-QT3-2021



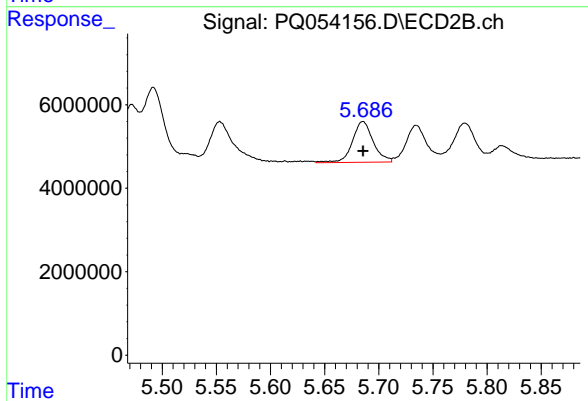
#17 AR-1242-2

R.T.: 5.492 min
 Delta R.T.: 0.000 min
 Response: 27417540
 Conc: 58.25 ng/ml



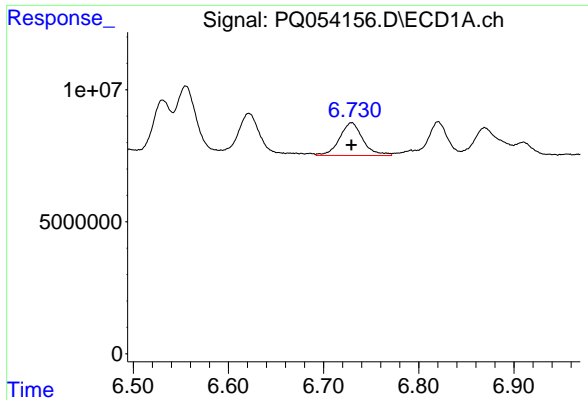
#18 AR-1242-3

R.T.: 6.622 min
 Delta R.T.: 0.001 min
 Response: 26563440
 Conc: 61.02 ng/ml



#18 AR-1242-3

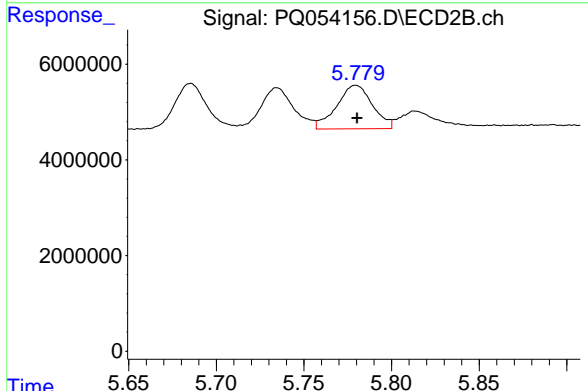
R.T.: 5.685 min
 Delta R.T.: 0.000 min
 Response: 13085746
 Conc: 59.31 ng/ml



#19 AR-1242-4

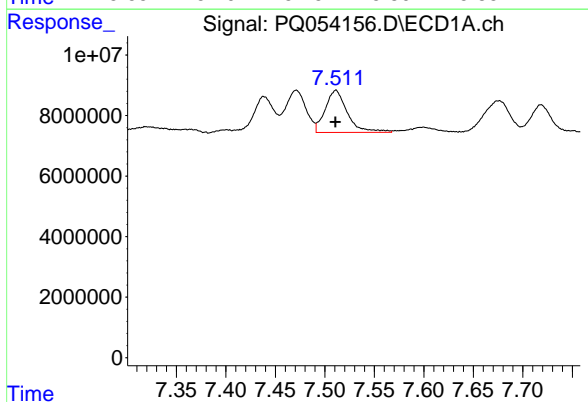
R.T.: 6.729 min
 Delta R.T.: 0.000 min
 Response: 21220584
 Conc: 59.02 ng/ml

Instrument :
 ECD_Q
ClientSampleId :
 LOQ-SOIL-02-QT3-2021



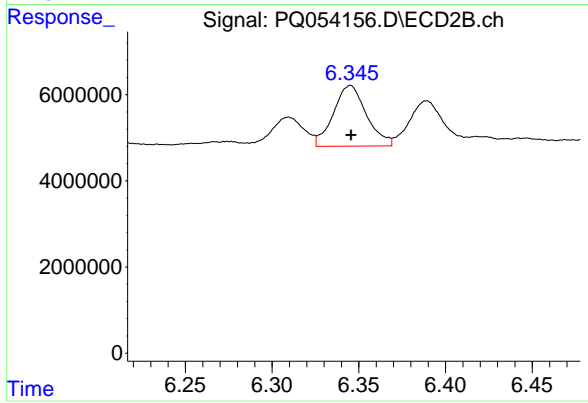
#19 AR-1242-4

R.T.: 5.780 min
 Delta R.T.: 0.000 min
 Response: 12945821
 Conc: 59.84 ng/ml



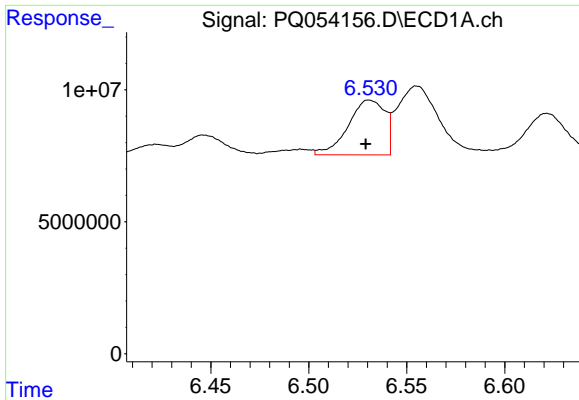
#20 AR-1242-5

R.T.: 7.511 min
 Delta R.T.: 0.000 min
 Response: 21700709
 Conc: 58.95 ng/ml



#20 AR-1242-5

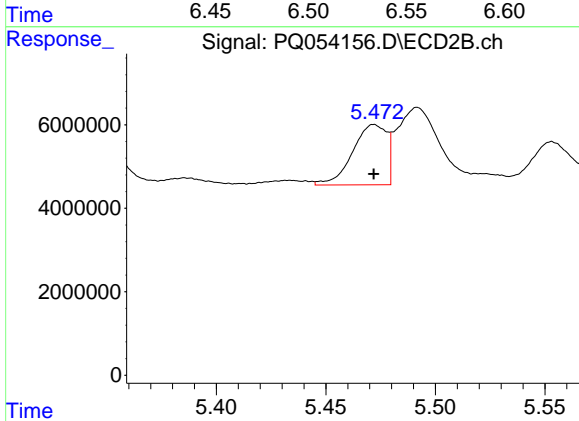
R.T.: 6.345 min
 Delta R.T.: 0.000 min
 Response: 18725437
 Conc: 63.12 ng/ml



#21 AR-1248-1

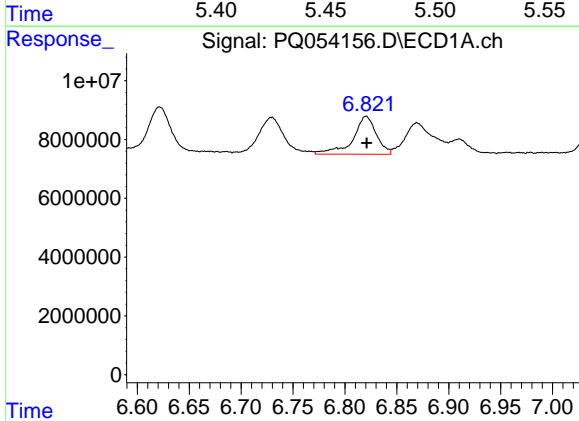
R.T.: 6.531 min
 Delta R.T.: 0.002 min
 Response: 27067022
 Conc: 72.96 ng/ml

Instrument :
 ECD_Q
 ClientSampleId :
 LOQ-SOIL-02-QT3-2021



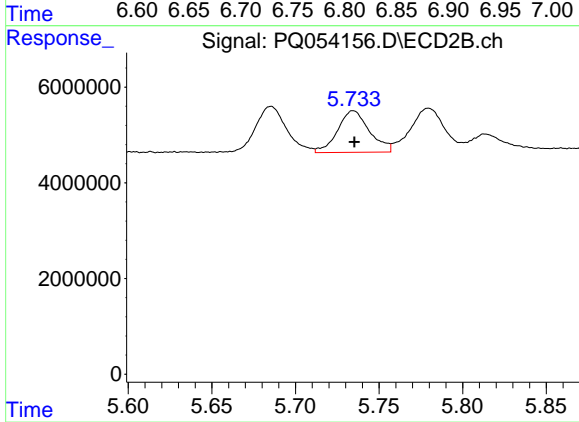
#21 AR-1248-1

R.T.: 5.472 min
 Delta R.T.: 0.000 min
 Response: 15622408
 Conc: 69.24 ng/ml



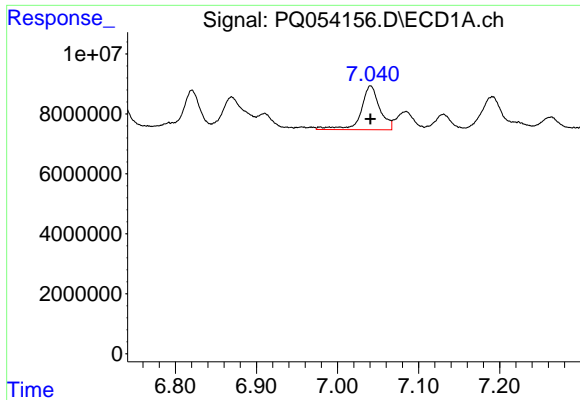
#22 AR-1248-2

R.T.: 6.820 min
 Delta R.T.: 0.000 min
 Response: 20235689
 Conc: 38.63 ng/ml



#22 AR-1248-2

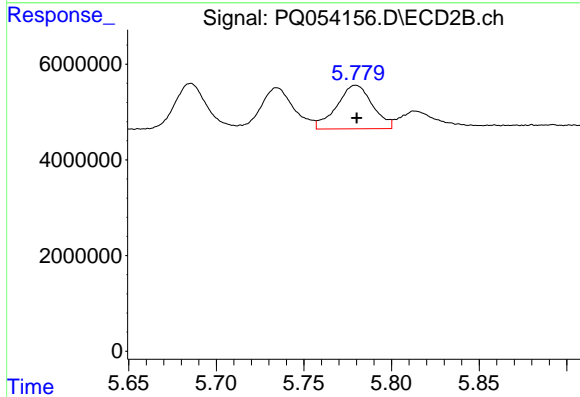
R.T.: 5.735 min
 Delta R.T.: 0.000 min
 Response: 11564025
 Conc: 35.23 ng/ml



#23 AR-1248-3

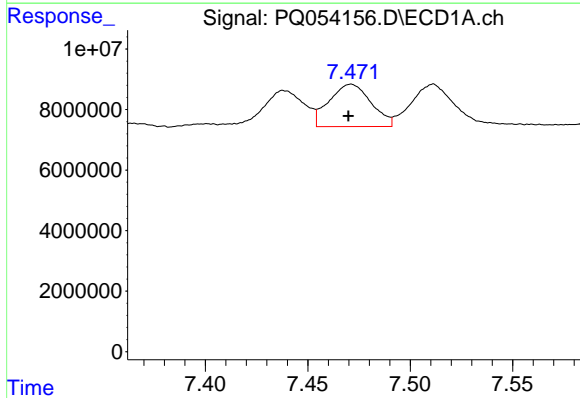
R.T.: 7.041 min
 Delta R.T.: 0.000 min
 Response: 23559802
 Conc: 39.70 ng/ml

Instrument :
 ECD_Q
 ClientSampleId :
 LOQ-SOIL-02-QT3-2021



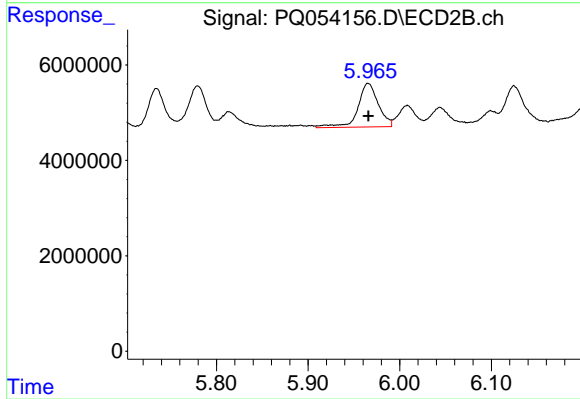
#23 AR-1248-3

R.T.: 5.780 min
 Delta R.T.: 0.000 min
 Response: 12945821
 Conc: 39.15 ng/ml



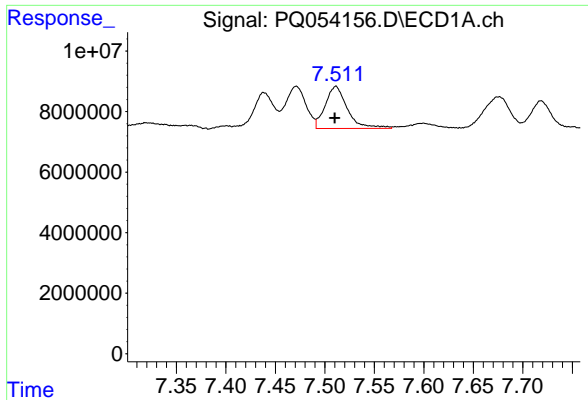
#24 AR-1248-4

R.T.: 7.471 min
 Delta R.T.: 0.001 min
 Response: 19981314
 Conc: 30.08 ng/ml



#24 AR-1248-4

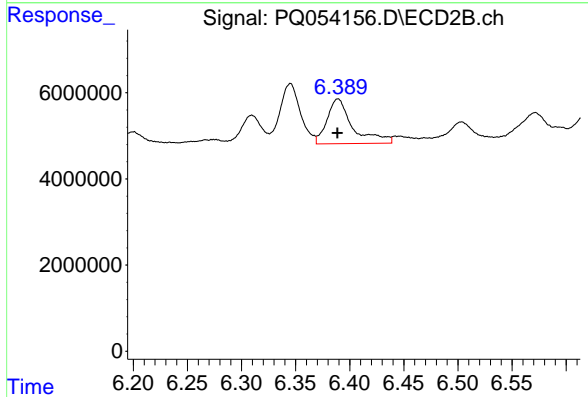
R.T.: 5.966 min
 Delta R.T.: 0.000 min
 Response: 14145389
 Conc: 35.64 ng/ml



#25 AR-1248-5

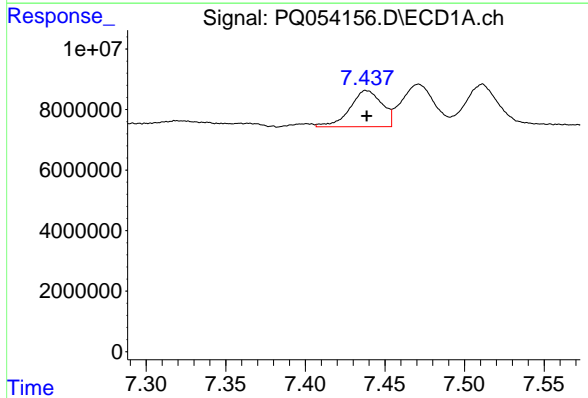
R.T.: 7.511 min
 Delta R.T.: 0.001 min
 Response: 21700709
 Conc: 33.33 ng/ml

Instrument :
 ECD_Q
 ClientSampleId :
 LOQ-SOIL-02-QT3-2021



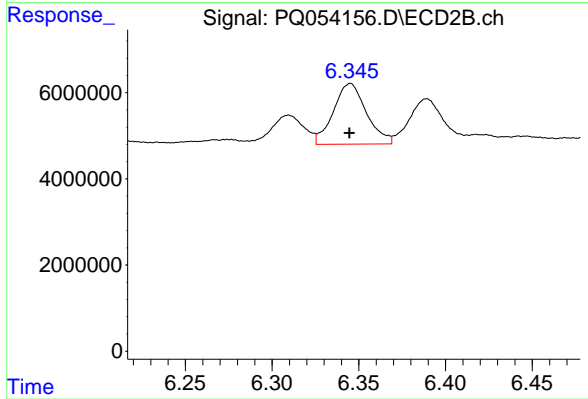
#25 AR-1248-5

R.T.: 6.389 min
 Delta R.T.: 0.000 min
 Response: 17138368
 Conc: 43.00 ng/ml



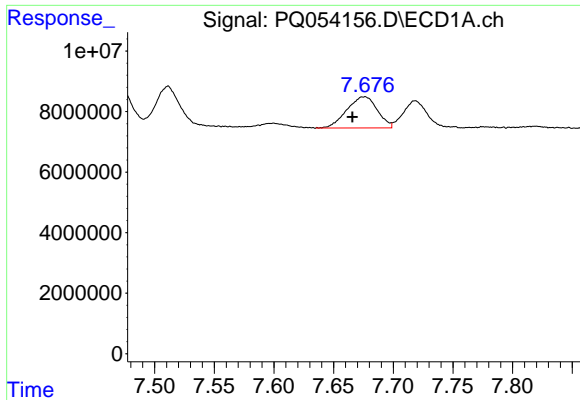
#26 AR-1254-1

R.T.: 7.438 min
 Delta R.T.: 0.000 min
 Response: 16899309
 Conc: 23.91 ng/ml



#26 AR-1254-1

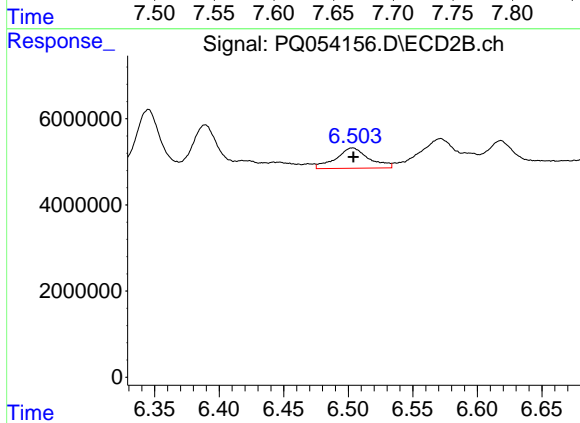
R.T.: 6.345 min
 Delta R.T.: 0.000 min
 Response: 18725437
 Conc: 28.00 ng/ml



#27 AR-1254-2

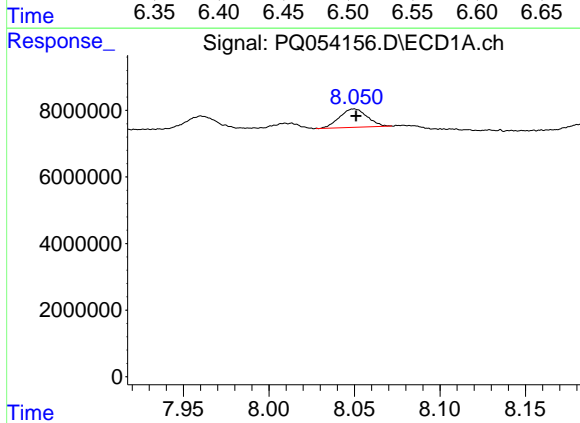
R.T.: 7.676 min
 Delta R.T.: 0.010 min
 Response: 18356168
 Conc: 16.76 ng/ml

Instrument :
 ECD_Q
ClientSampleId :
 LOQ-SOIL-02-QT3-2021



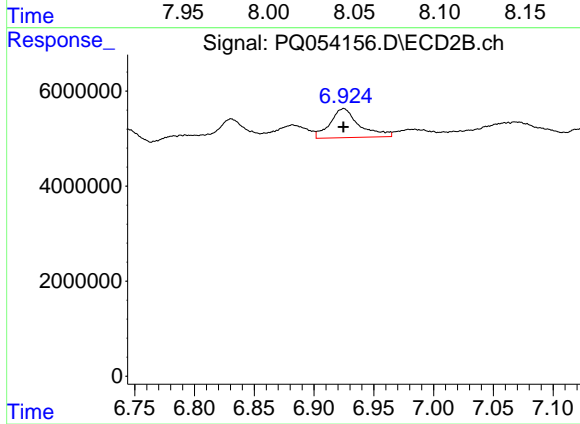
#27 AR-1254-2

R.T.: 6.503 min
 Delta R.T.: 0.000 min
 Response: 8439417
 Conc: 13.73 ng/ml



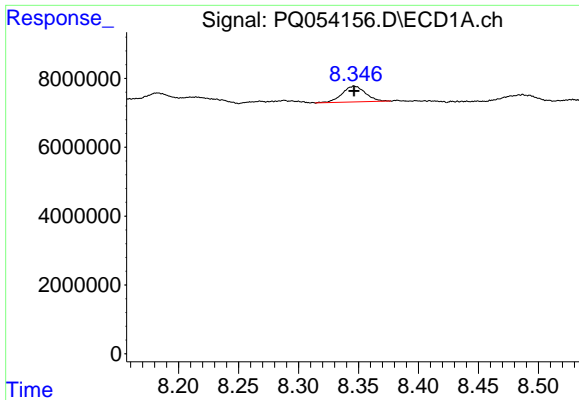
#28 AR-1254-3

R.T.: 8.050 min
 Delta R.T.: -0.001 min
 Response: 6169376
 Conc: 5.25 ng/ml



#28 AR-1254-3

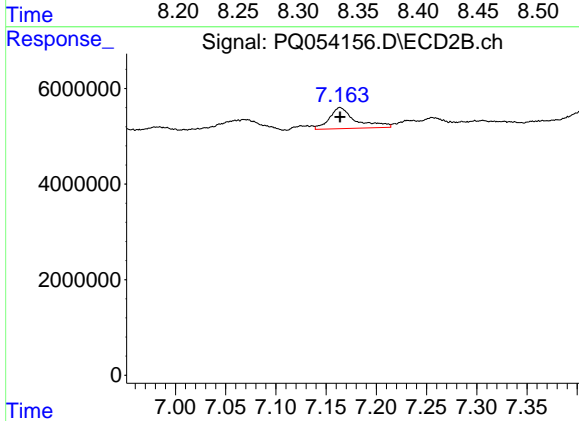
R.T.: 6.925 min
 Delta R.T.: 0.000 min
 Response: 10467519
 Conc: 10.84 ng/ml



#29 AR-1254-4

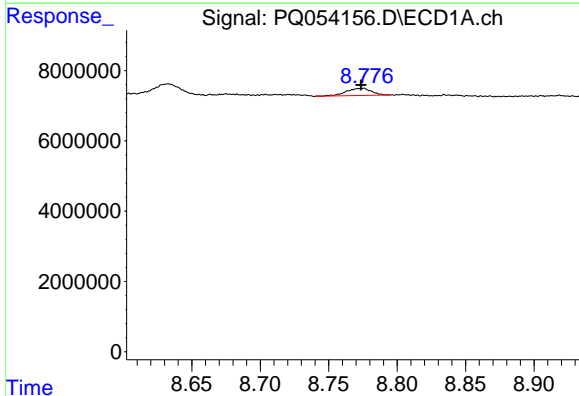
R.T.: 8.347 min
 Delta R.T.: 0.000 min
 Response: 6188014
 Conc: 7.02 ng/ml

Instrument :
 ECD_Q
 ClientSampleId :
 LOQ-SOIL-02-QT3-2021



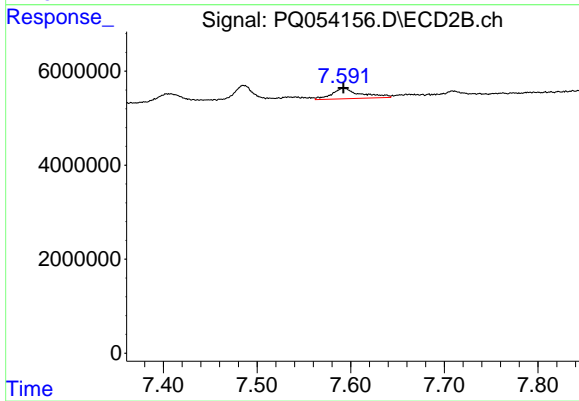
#29 AR-1254-4

R.T.: 7.164 min
 Delta R.T.: 0.000 min
 Response: 8077360
 Conc: 12.12 ng/ml



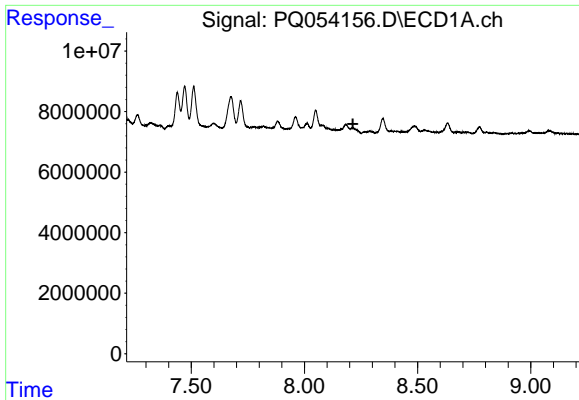
#30 AR-1254-5

R.T.: 8.775 min
 Delta R.T.: 0.000 min
 Response: 2600286
 Conc: 2.66 ng/ml



#30 AR-1254-5

R.T.: 7.593 min
 Delta R.T.: 0.000 min
 Response: 4789477
 Conc: 4.91 ng/ml

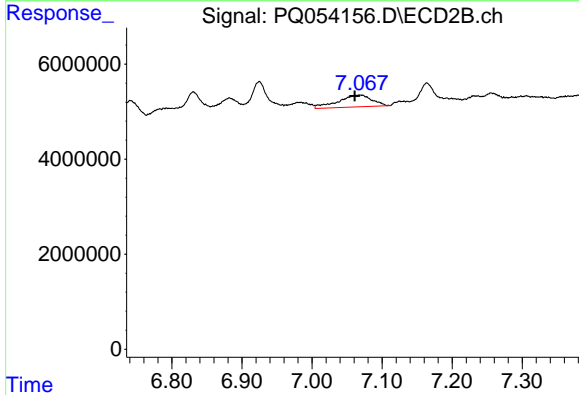


#31 AR-1260-1

R.T.: 0.000 min
 Exp R.T.: 8.214 min
 Response: 0
 Conc: N.D.

Instrument :
 ECD_Q
ClientSampleId :
 LOQ-SOIL-02-QT3-2021

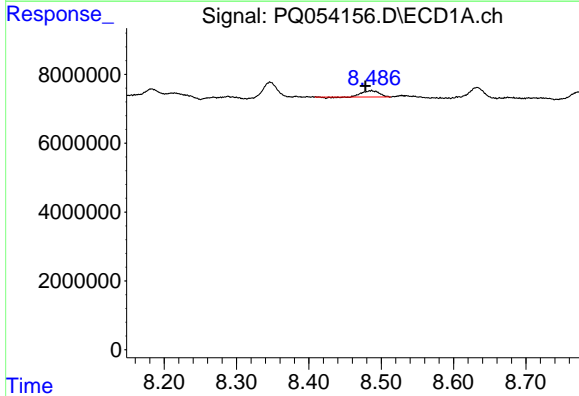
Time



#31 AR-1260-1

R.T.: 7.069 min
 Delta R.T.: 0.008 min
 Response: 8345044
 Conc: 11.13 ng/ml

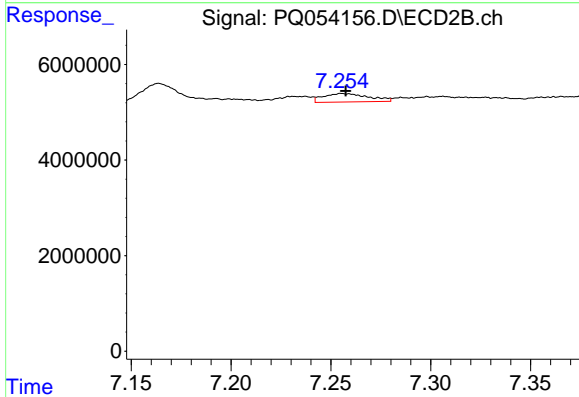
Time



#32 AR-1260-2

R.T.: 8.487 min
 Delta R.T.: 0.008 min
 Response: 3025873
 Conc: 2.67 ng/ml

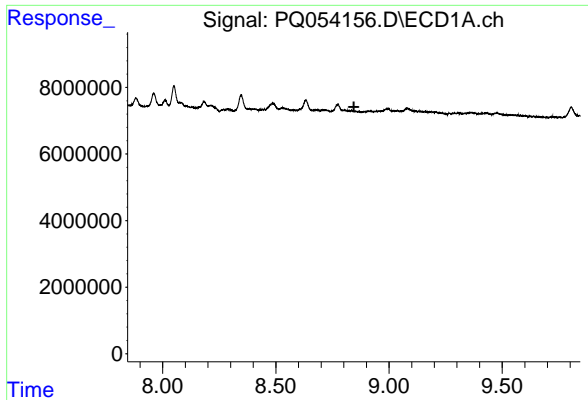
Time



#32 AR-1260-2

R.T.: 7.256 min
 Delta R.T.: -0.002 min
 Response: 2806044
 Conc: 2.69 ng/ml

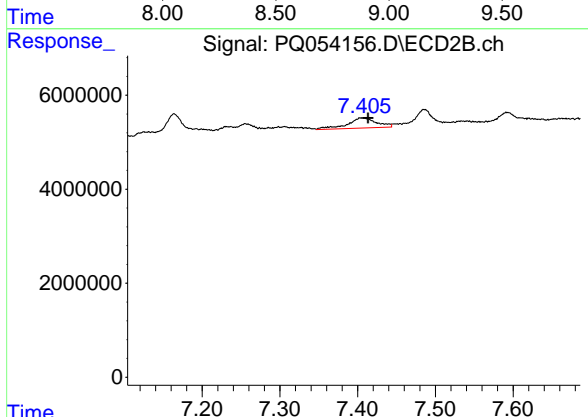
Time



#33 AR-1260-3

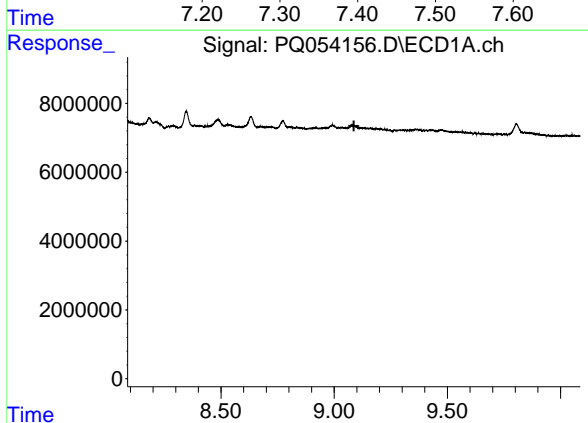
R.T.: 0.000 min
 Exp R.T.: 8.845 min
 Response: 0
 Conc: N.D.

Instrument :
 ECD_Q
ClientSampled :
 LOQ-SOIL-02-QT3-2021



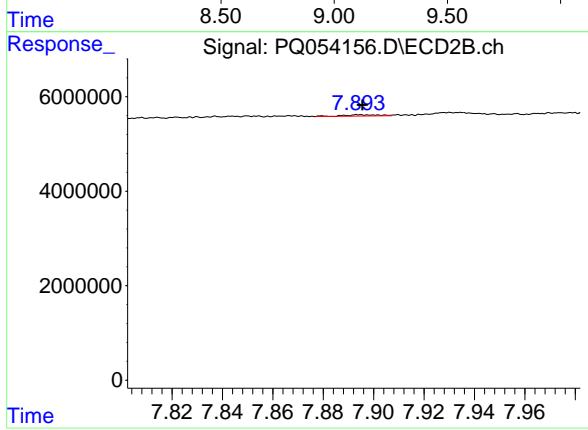
#33 AR-1260-3

R.T.: 7.404 min
 Delta R.T.: -0.009 min
 Response: 5678093
 Conc: 6.52 ng/ml



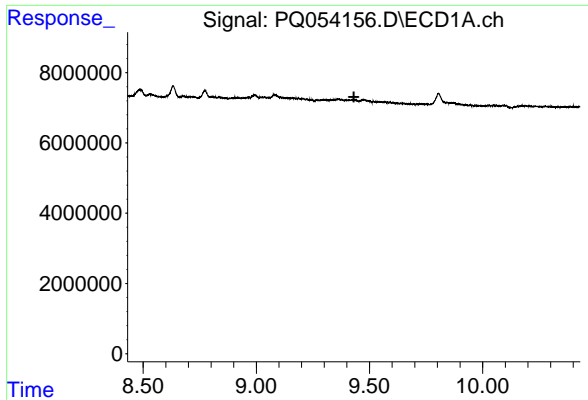
#34 AR-1260-4

R.T.: 0.000 min
 Exp R.T.: 9.087 min
 Response: 0
 Conc: N.D.



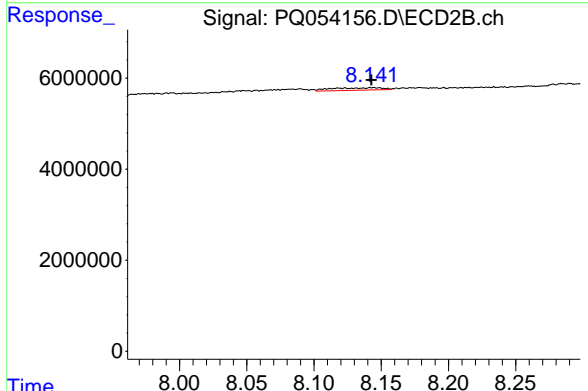
#34 AR-1260-4

R.T.: 7.894 min
 Delta R.T.: -0.001 min
 Response: 279384
 Conc: 0.45 ng/ml

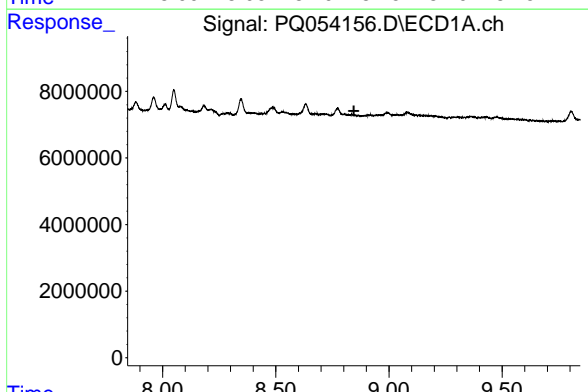


#35 AR-1260-5
 R.T.: 0.000 min
 Exp R.T. : 9.431 min
 Response: 0
 Conc: N.D.

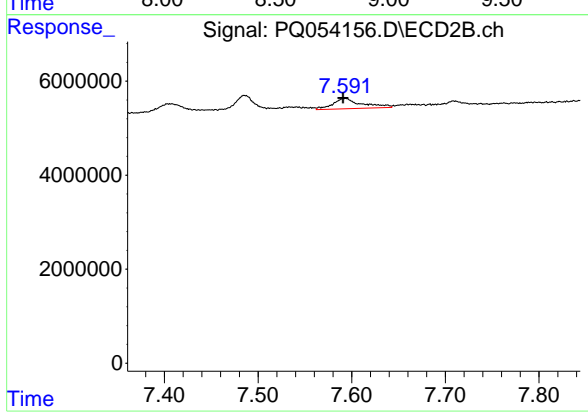
Instrument :
 ECD_Q
 ClientSampleId :
 LOQ-SOIL-02-QT3-2021



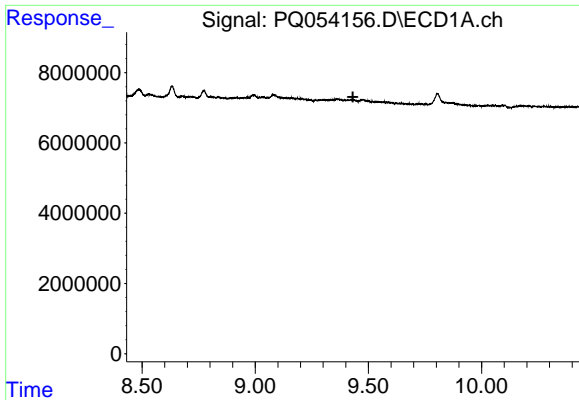
#35 AR-1260-5
 R.T.: 8.144 min
 Delta R.T.: 0.000 min
 Response: 1444085
 Conc: 0.84 ng/ml



#36 AR-1262-1
 R.T.: 0.000 min
 Exp R.T. : 8.845 min
 Response: 0
 Conc: N.D.



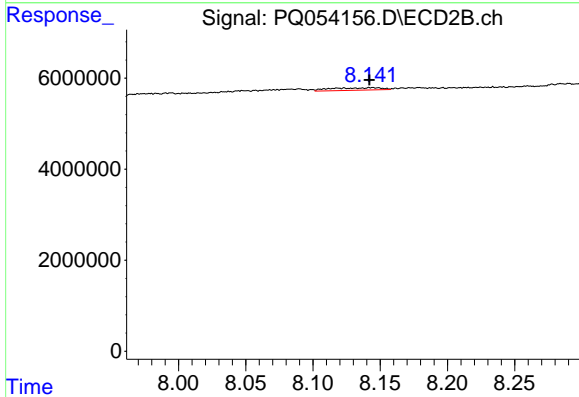
#36 AR-1262-1
 R.T.: 7.593 min
 Delta R.T.: 0.002 min
 Response: 4789477
 Conc: 10.60 ng/ml



#37 AR-1262-2

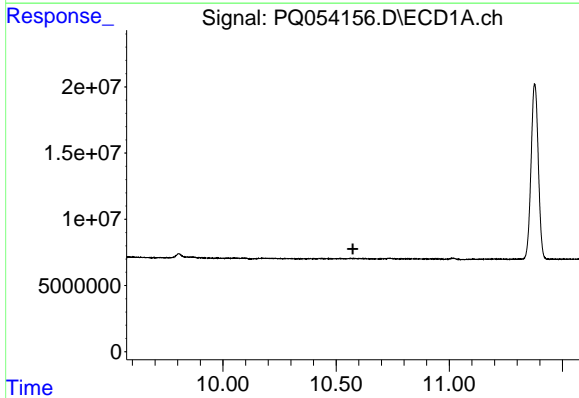
R.T.: 0.000 min
 Exp R.T.: 9.432 min
 Response: 0
 Conc: N.D.

Instrument :
 ECD_Q
ClientSampled :
 LOQ-SOIL-02-QT3-2021



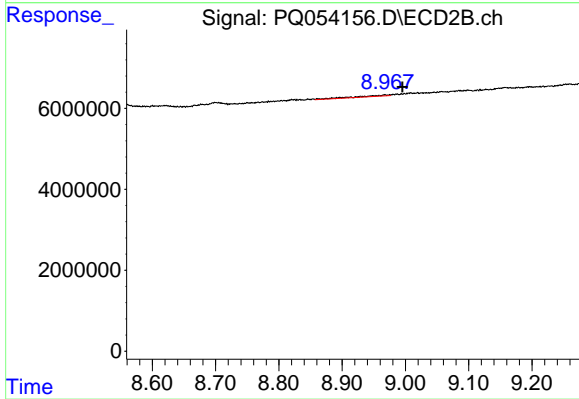
#37 AR-1262-2

R.T.: 8.144 min
 Delta R.T.: 0.002 min
 Response: 1444085
 Conc: 0.77 ng/ml



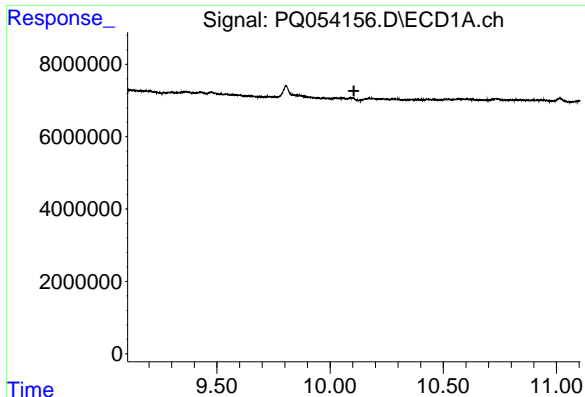
#40 AR-1262-5

R.T.: 0.000 min
 Exp R.T.: 10.574 min
 Response: 0
 Conc: N.D.



#40 AR-1262-5

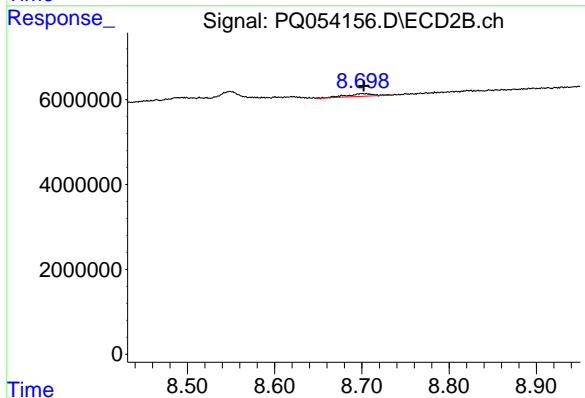
R.T.: 8.967 min
 Delta R.T.: -0.028 min
 Response: 972912
 Conc: 1.69 ng/ml



#43 AR-1268-3

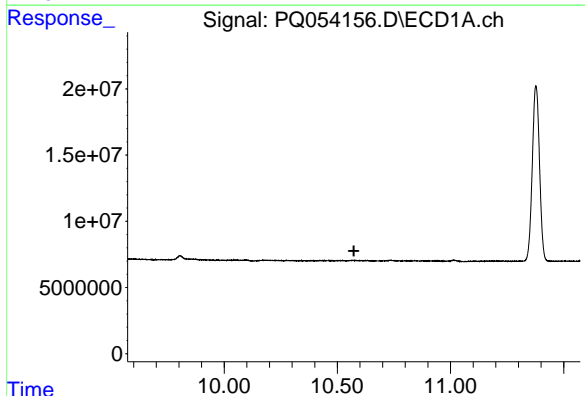
R.T.: 0.000 min
 Exp R.T. : 10.105 min
 Response: 0
 Conc: N.D.

Instrument :
 ECD_Q
 ClientSampleId :
 LOQ-SOIL-02-QT3-2021



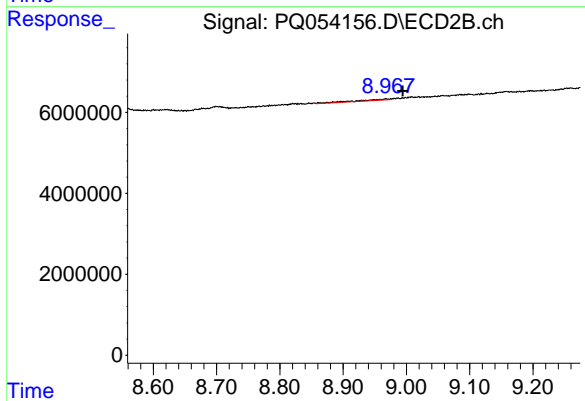
#43 AR-1268-3

R.T.: 8.705 min
 Delta R.T.: 0.003 min
 Response: 1318507
 Conc: 0.79 ng/ml



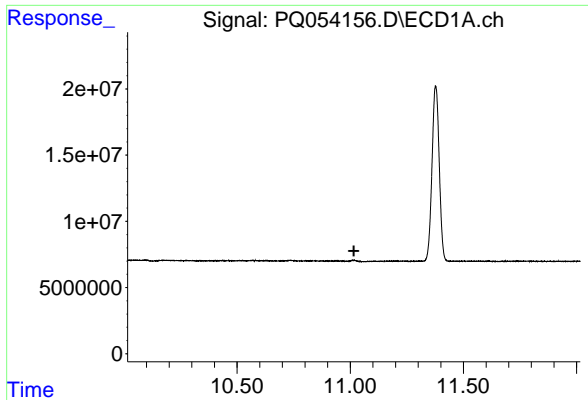
#44 AR-1268-4

R.T.: 0.000 min
 Exp R.T. : 10.573 min
 Response: 0
 Conc: N.D.



#44 AR-1268-4

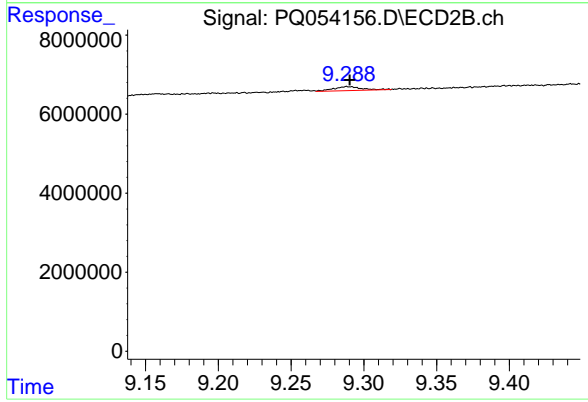
R.T.: 8.967 min
 Delta R.T.: -0.027 min
 Response: 972912
 Conc: 1.49 ng/ml



#45 AR-1268-5

R.T.: 0.000 min
Exp R.T.: 11.016 min
Response: 0
Conc: N.D.

Instrument :
ECD_Q
ClientSampleId :
LOQ-SOIL-02-QT3-2021



#45 AR-1268-5

R.T.: 9.289 min
Delta R.T.: -0.001 min
Response: 1336127
Conc: 0.28 ng/ml