

Data Path : Z:\pestpcbsrv\HPCHEM1\ECD_Q\Data\PQ072921\
 Data File : PQ054149.D
 Signal(s) : Signal #1: ECD1A.ch Signal #2: ECD2B.ch
 Acq On : 29 Jul 2021 20:31
 Operator : AJ\MA
 Sample : M2940-07
 Misc : AR1268 LOD 25 PPB
 ALS Vial : 21 Sample Multiplier: 1

Instrument :
 ECD_Q
ClientSampleId :
 LOD-MDL-WATER-01-QT3-2021

Manual Integrations
APPROVED
 mohammad
 8/4/2021 8:58:01 AM

Integration File signal 1: autoint1.e
 Integration File signal 2: autoint2.e
 Quant Time: Jul 30 04:17:43 2021
 Quant Method : Z:\pestpcbsrv\HPCHEM1\ECD_Q\Method\PQ072921.M
 Quant Title : GC EXTRACTABLES
 QLast Update : Fri Jul 30 02:37:02 2021
 Response via : Initial Calibration
 Integrator: ChemStation

Volume Inj. : 2 µl
 Signal #1 Phase : ZB-MR1 Signal #2 Phase: ZB-MR2
 Signal #1 Info : 30Mx0.32mmx 0.50µ Signal #2 Info : 30M x 0.32mm x 0.25µm

Compound	RT#1	RT#2	Resp#1	Resp#2	ng/ml	ng/ml

System Monitoring Compounds						
1) SA Tetrachlo...	5.204	4.208	394.8E6	224.5E6	16.906	15.879
2) SA Decachlor...	11.376	9.545	342.5E6	277.6E6	20.358	22.010
Target Compounds						
41) L9 AR-1268-1	9.760	8.427	56174993	57814221	26.634	25.632m
42) L9 AR-1268-2	9.863	8.493	52686064	48131129	27.315	25.768
43) L9 AR-1268-3	10.103	8.700	42695509	43088600	26.520	25.776
44) L9 AR-1268-4	10.572	8.993	22303279	17443114	30.492	26.748
45) L9 AR-1268-5	11.015	9.288	144.1E6	123.2E6	26.423	26.143

(f)=RT Delta > 1/2 Window (#)=Amounts differ by > 25% (m)=manual int.

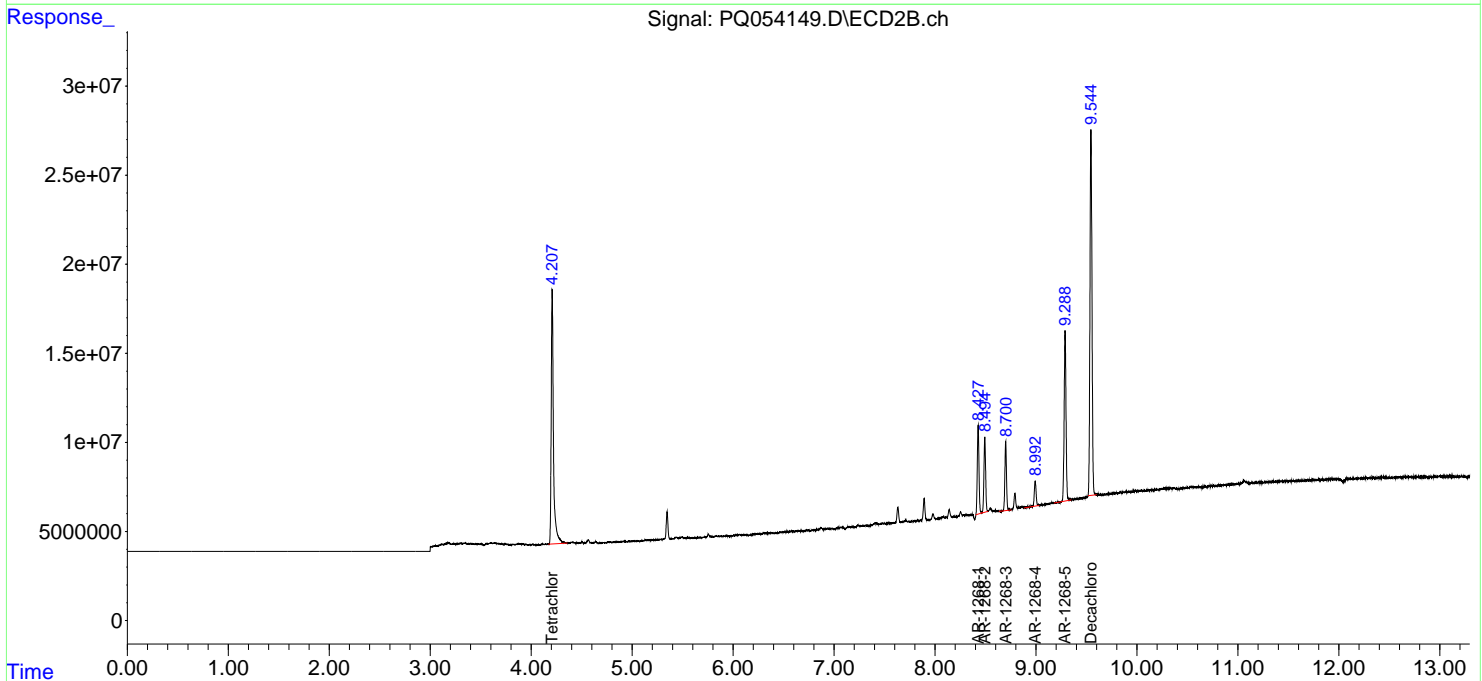
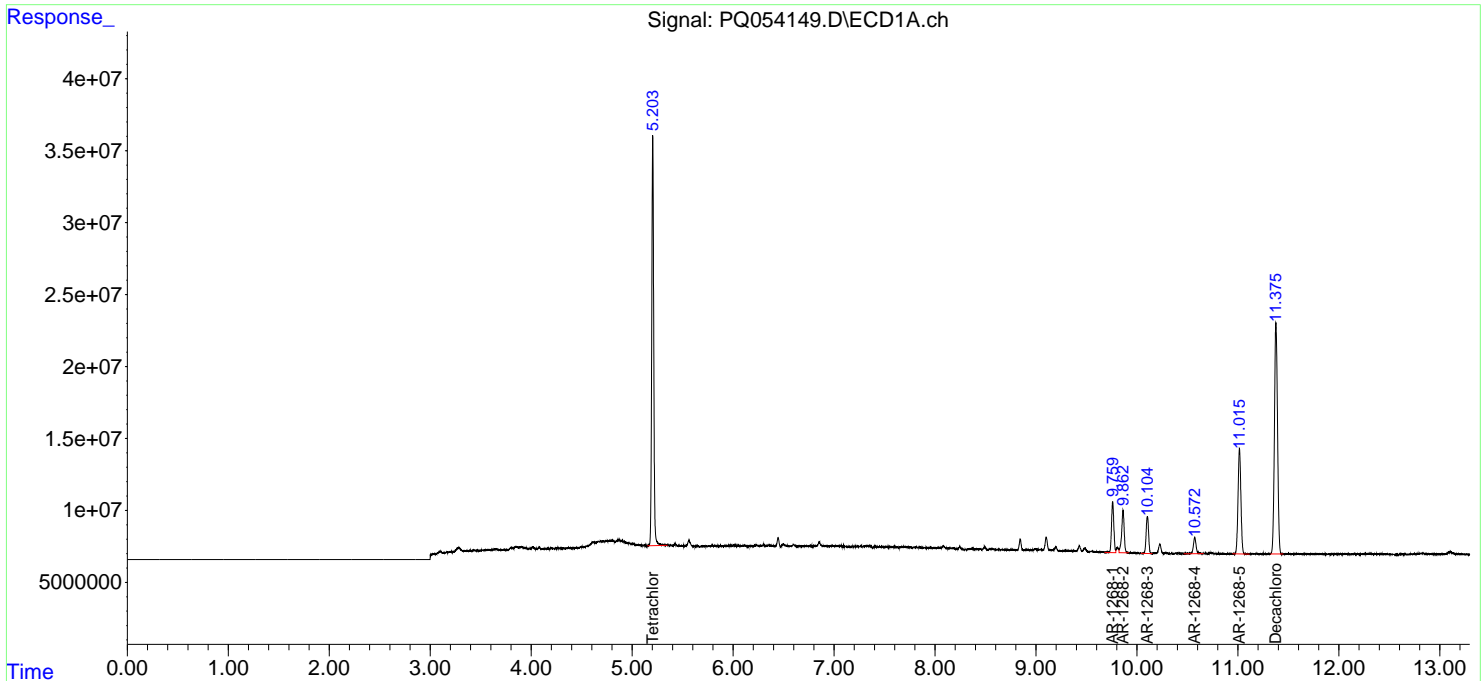
Data Path : Z:\pestpcbsrv\HPCHEM1\ECD_Q\Data\PQ072921\
 Data File : PQ054149.D
 Signal(s) : Signal #1: ECD1A.ch Signal #2: ECD2B.ch
 Acq On : 29 Jul 2021 20:31
 Operator : AJ\MA
 Sample : M2940-07
 Misc : AR1268 LOD 25 PPB
 ALS Vial : 21 Sample Multiplier: 1

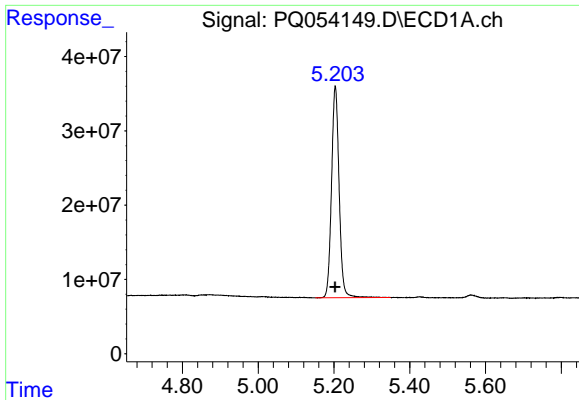
Instrument :
 ECD_Q
Client Sampled :
 LOD-MDL-WATER-01-QT3-2021

Manual Integrations
APPROVED
 mohammad
 8/4/2021 8:58:01 AM

Integration File signal 1: autoint1.e
 Integration File signal 2: autoint2.e
 Quant Time: Jul 30 04:17:43 2021
 Quant Method : Z:\pestpcbsrv\HPCHEM1\ECD_Q\Method\PQ072921.M
 Quant Title : GC EXTRACTABLES
 QLast Update : Fri Jul 30 02:37:02 2021
 Response via : Initial Calibration
 Integrator: ChemStation

Volume Inj. : 2 µl
 Signal #1 Phase : ZB-MR1 Signal #2 Phase: ZB-MR2
 Signal #1 Info : 30Mx0.32mmx 0.50µm Signal #2 Info : 30M x 0.32mm x 0.25µm



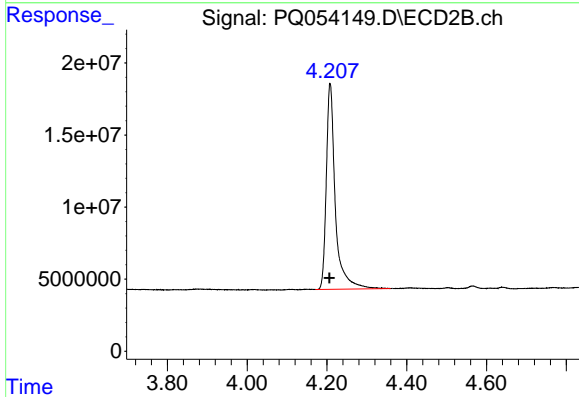


#1 Tetrachloro-m-xylene
 R.T.: 5.204 min
 Delta R.T.: 0.000 min
 Response: 394798879
 Conc: 16.91 ng/ml

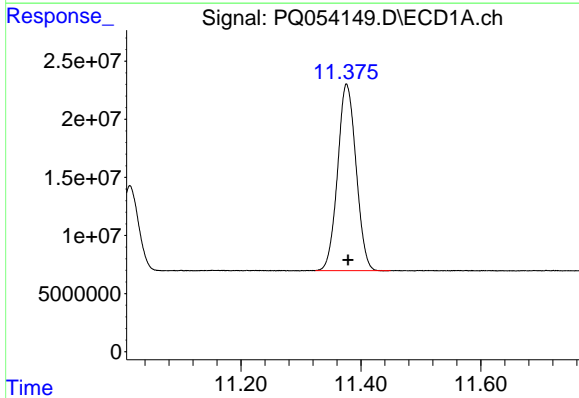
Instrument :
 ECD_Q
ClientSampled :
 LOD-MDL-WATER-01-QT3-2021

Manual Integrations
APPROVED

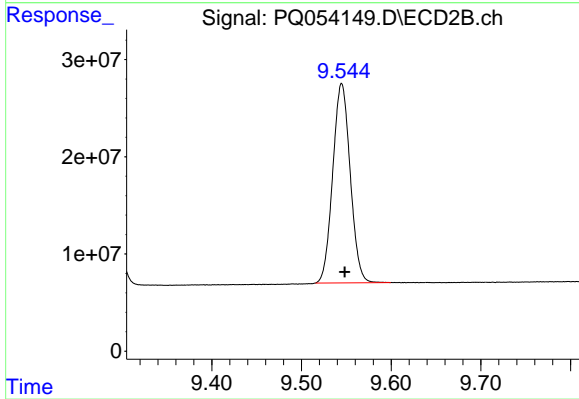
mohammad
 8/4/2021 8:58:01 AM



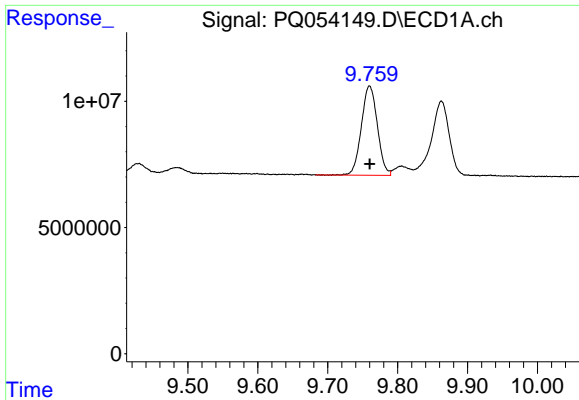
#1 Tetrachloro-m-xylene
 R.T.: 4.208 min
 Delta R.T.: 0.002 min
 Response: 224484989
 Conc: 15.88 ng/ml



#2 Decachlorobiphenyl
 R.T.: 11.376 min
 Delta R.T.: -0.003 min
 Response: 342537278
 Conc: 20.36 ng/ml



#2 Decachlorobiphenyl
 R.T.: 9.545 min
 Delta R.T.: -0.003 min
 Response: 277638791
 Conc: 22.01 ng/ml



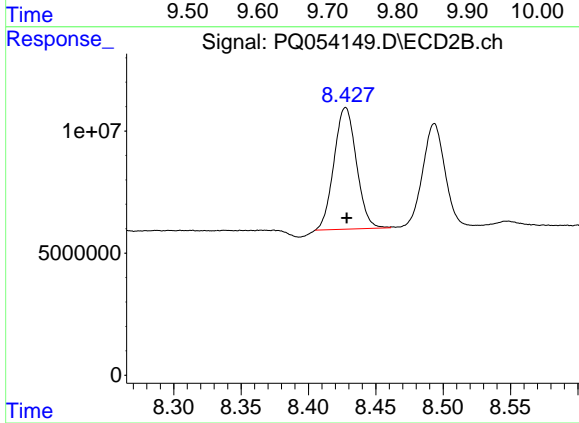
#41 AR-1268-1

R.T.: 9.760 min
 Delta R.T.: 0.000 min
 Response: 56174993
 Conc: 26.63 ng/ml

Instrument :
 ECD_Q
 ClientSampled :
 LOD-MDL-WATER-01-QT3-2021

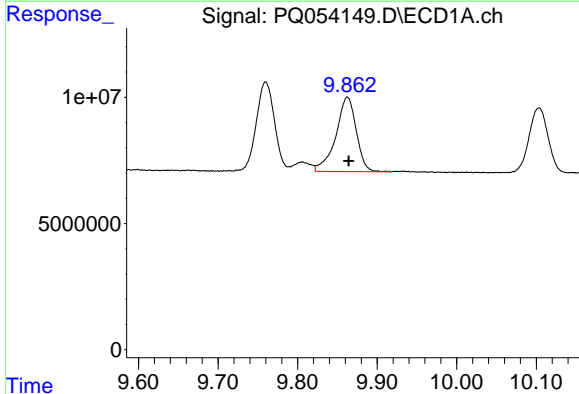
Manual Integrations
 APPROVED

mohammad
 8/4/2021 8:58:01 AM



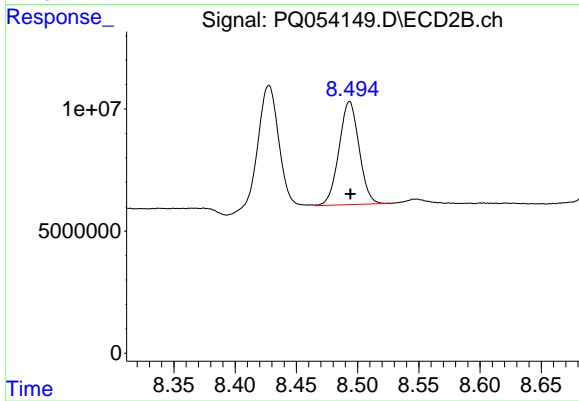
#41 AR-1268-1

R.T.: 8.427 min
 Delta R.T.: -0.001 min
 Response: 57814221
 Conc: 25.63 ng/ml m



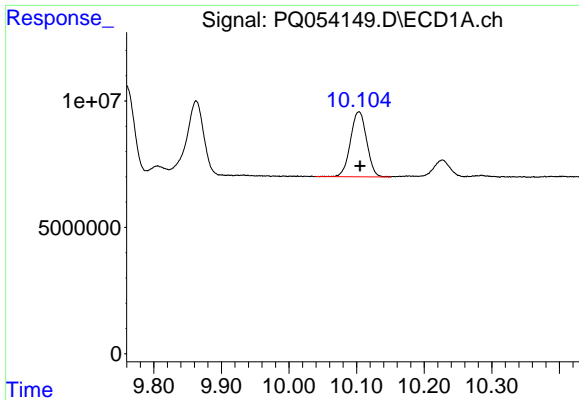
#42 AR-1268-2

R.T.: 9.863 min
 Delta R.T.: -0.002 min
 Response: 52686064
 Conc: 27.31 ng/ml



#42 AR-1268-2

R.T.: 8.493 min
 Delta R.T.: 0.000 min
 Response: 48131129
 Conc: 25.77 ng/ml

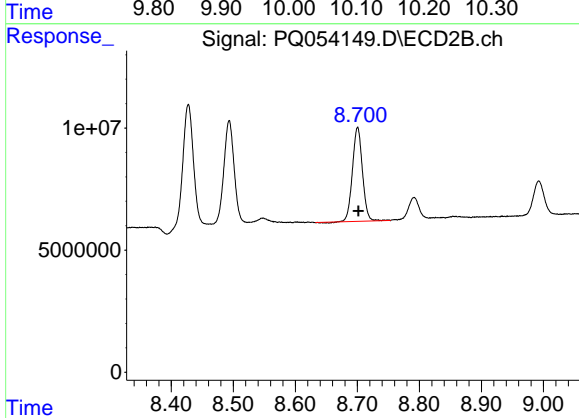


#43 AR-1268-3

R.T.: 10.103 min
 Delta R.T.: -0.002 min
 Response: 42695509
 Conc: 26.52 ng/ml

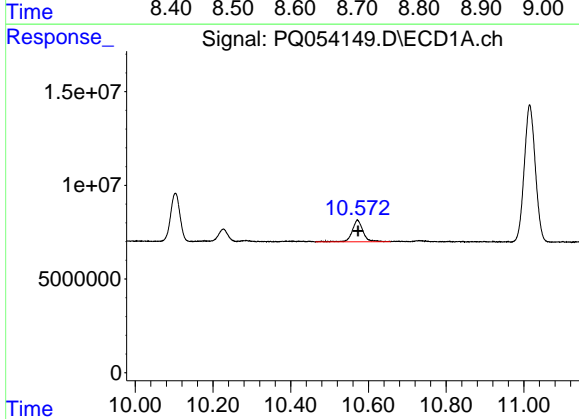
Instrument :
 ECD_Q
 ClientSampled :
 LOD-MDL-WATER-01-QT3-2021

Manual Integrations
 APPROVED
 mohammad
 8/4/2021 8:58:01 AM



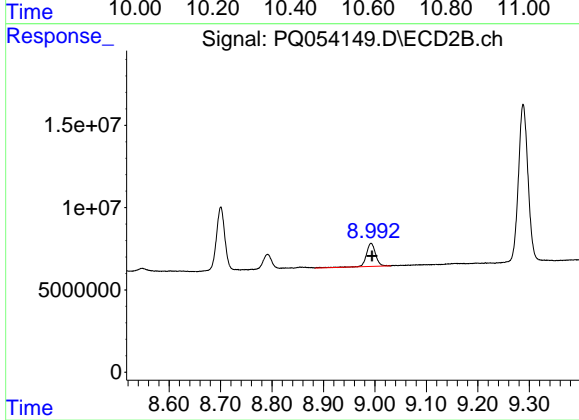
#43 AR-1268-3

R.T.: 8.700 min
 Delta R.T.: -0.001 min
 Response: 43088600
 Conc: 25.78 ng/ml



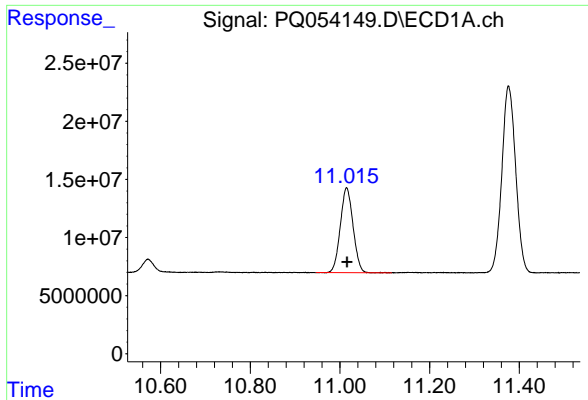
#44 AR-1268-4

R.T.: 10.572 min
 Delta R.T.: -0.001 min
 Response: 22303279
 Conc: 30.49 ng/ml



#44 AR-1268-4

R.T.: 8.993 min
 Delta R.T.: -0.002 min
 Response: 17443114
 Conc: 26.75 ng/ml



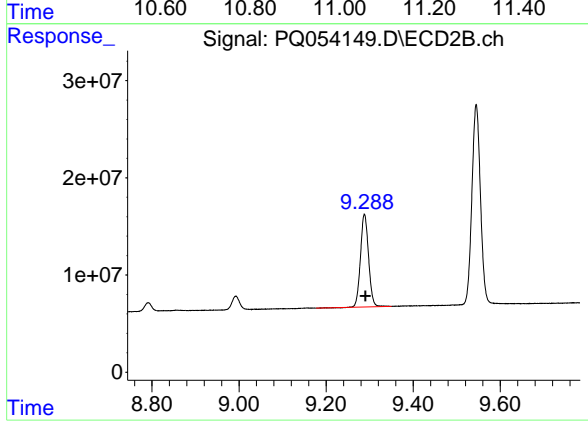
#45 AR-1268-5

R.T.: 11.015 min
Delta R.T.: -0.001 min
Response: 144088544
Conc: 26.42 ng/ml

Instrument :
ECD_Q
ClientSampleId :
LOD-MDL-WATER-01-QT3-2021

Manual Integrations
APPROVED

mohammad
8/4/2021 8:58:01 AM



#45 AR-1268-5

R.T.: 9.288 min
Delta R.T.: -0.002 min
Response: 123185381
Conc: 26.14 ng/ml