

Data Path : Z:\pestpcbsrv\HPCHEM1\ECD_Q\Data\PQ072921\
 Data File : PQ054151.D
 Signal(s) : Signal #1: ECD1A.ch Signal #2: ECD2B.ch
 Acq On : 29 Jul 2021 21:20
 Operator : AJ\MA
 Sample : I.BLK
 Misc :
 ALS Vial : 2 Sample Multiplier: 1

Instrument :
 ECD_Q
 ClientSampleId :
 I.BLK

Integration File signal 1: autoint1.e
 Integration File signal 2: autoint2.e
 Quant Time: Jul 30 04:18:38 2021
 Quant Method : Z:\pestpcbsrv\HPCHEM1\ECD_Q\Method\PQ072921.M
 Quant Title : GC EXTRACTABLES
 QLast Update : Fri Jul 30 02:37:02 2021
 Response via : Initial Calibration
 Integrator: ChemStation

Volume Inj. : 2 µl
 Signal #1 Phase : ZB-MR1 Signal #2 Phase: ZB-MR2
 Signal #1 Info : 30Mx0.32mmx 0.50µ Signal #2 Info : 30M x 0.32mm x 0.25µm

Compound	RT#1	RT#2	Resp#1	Resp#2	ng/ml	ng/ml

System Monitoring Compounds						
1) SA Tetrachlo...	5.203	4.208	461.6E6	270.7E6	19.768	19.151
2) SA Decachlor...	11.376	9.545	355.8E6	293.2E6	21.147	23.242

Target Compounds

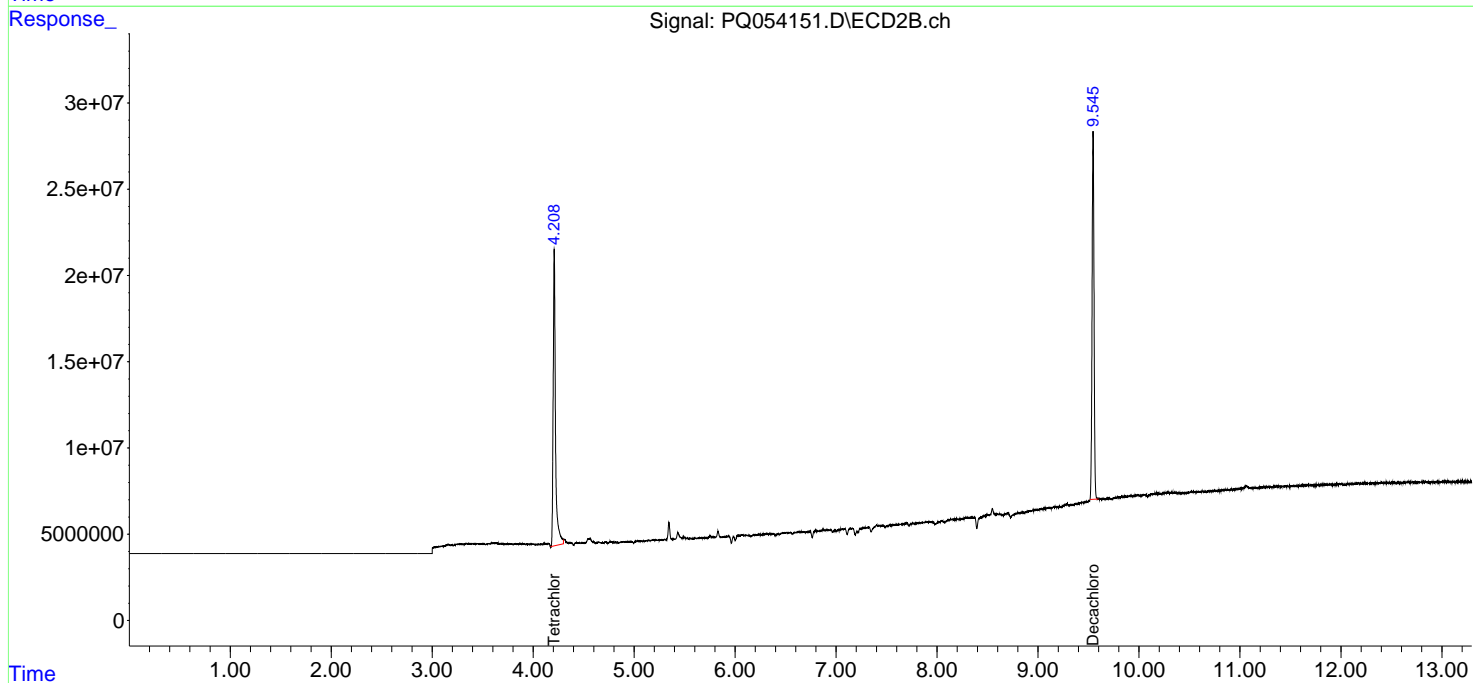
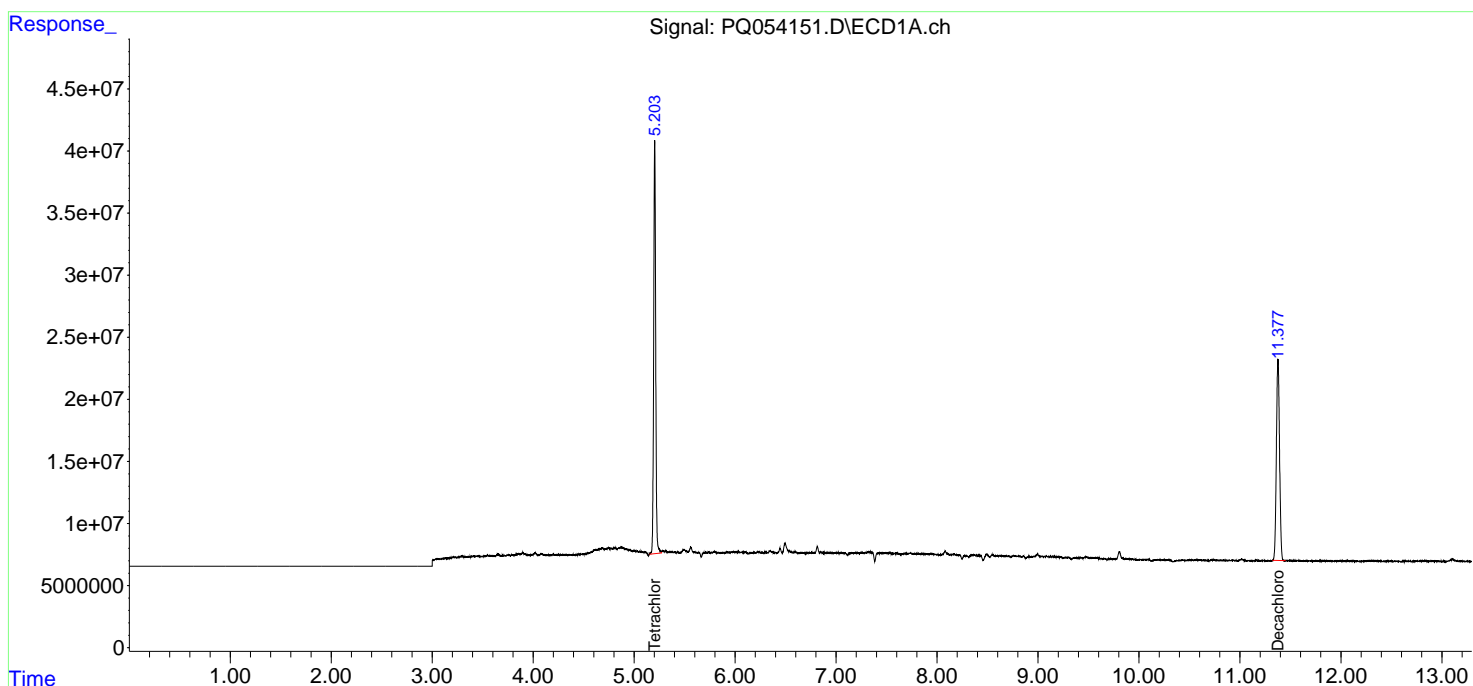
(f)=RT Delta > 1/2 Window (#)=Amounts differ by > 25% (m)=manual int.

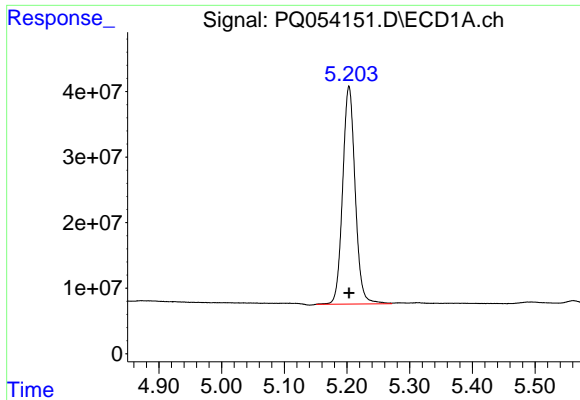
Data Path : Z:\pestpcbsrv\HPCHEM1\ECD_Q\Data\PQ072921\
 Data File : PQ054151.D
 Signal(s) : Signal #1: ECD1A.ch Signal #2: ECD2B.ch
 Acq On : 29 Jul 2021 21:20
 Operator : AJ\MA
 Sample : I.BLK
 Misc :
 ALS Vial : 2 Sample Multiplier: 1

Instrument :
 ECD_Q
 ClientSampleId :
 I.BLK

Integration File signal 1: autoint1.e
 Integration File signal 2: autoint2.e
 Quant Time: Jul 30 04:18:38 2021
 Quant Method : Z:\pestpcbsrv\HPCHEM1\ECD_Q\Method\PQ072921.M
 Quant Title : GC EXTRACTABLES
 QLast Update : Fri Jul 30 02:37:02 2021
 Response via : Initial Calibration
 Integrator: ChemStation

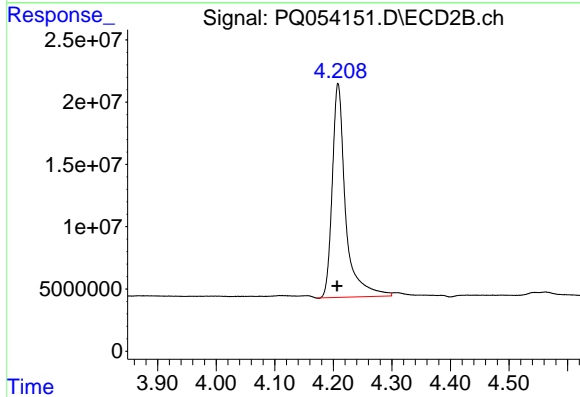
Volume Inj. : 2 µl
 Signal #1 Phase : ZB-MR1 Signal #2 Phase: ZB-MR2
 Signal #1 Info : 30Mx0.32mmx 0.50µ Signal #2 Info : 30M x 0.32mm x 0.25µm



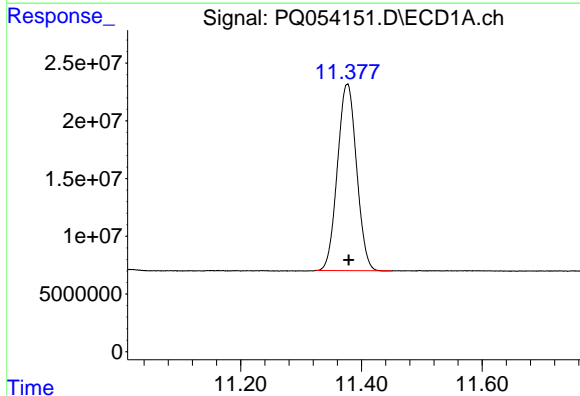


#1 Tetrachloro-m-xylene
R.T.: 5.203 min
Delta R.T.: 0.000 min
Response: 461620184
Conc: 19.77 ng/ml

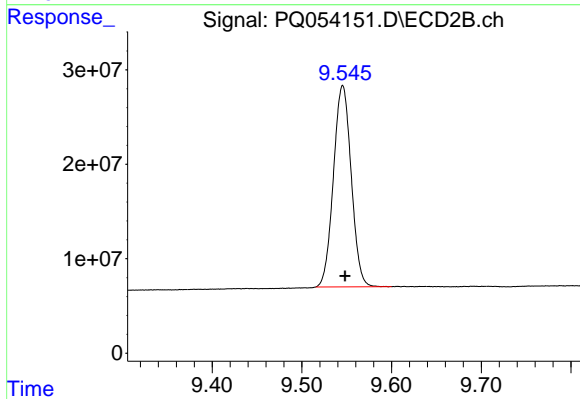
Instrument :
ECD_Q
ClientSampleId :
I.BLK



#1 Tetrachloro-m-xylene
R.T.: 4.208 min
Delta R.T.: 0.002 min
Response: 270742188
Conc: 19.15 ng/ml



#2 Decachlorobiphenyl
R.T.: 11.376 min
Delta R.T.: -0.002 min
Response: 355822072
Conc: 21.15 ng/ml



#2 Decachlorobiphenyl
R.T.: 9.545 min
Delta R.T.: -0.003 min
Response: 293176144
Conc: 23.24 ng/ml