

Data Path : Z:\pestpcbsrv\HPCHEM1\ECD_Q\Data\PQ072921\
 Data File : PQ054192.D
 Signal(s) : Signal #1: ECD1A.ch Signal #2: ECD2B.ch
 Acq On : 30 Jul 2021 09:58
 Operator : AJ\MA
 Sample : AR1660CCC500
 Misc :
 ALS Vial : 3 Sample Multiplier: 1

Instrument :
 ECD_Q
 ClientSampleId :
 AR1660CCC500

Integration File signal 1: autoint1.e
 Integration File signal 2: autoint2.e
 Quant Time: Jul 31 07:15:48 2021
 Quant Method : Z:\pestpcbsrv\HPCHEM1\ECD_Q\Method\PQ072921.M
 Quant Title : GC EXTRACTABLES
 QLast Update : Fri Jul 30 02:37:02 2021
 Response via : Initial Calibration
 Integrator: ChemStation

Volume Inj. : 2 µl
 Signal #1 Phase : ZB-MR1 Signal #2 Phase: ZB-MR2
 Signal #1 Info : 30Mx0.32mmx 0.50µ Signal #2 Info : 30M x 0.32mm x 0.25µm

Compound	RT#1	RT#2	Resp#1	Resp#2	ng/ml	ng/ml

System Monitoring Compounds						
1) SA Tetrachlo...	5.206	4.207	1069.7E6	587.8E6	45.805	41.582
2) SA Decachlor...	11.382	9.547	808.0E6	649.4E6	48.024	51.481
Target Compounds						
3) L1 AR-1016-1	6.532	5.471	334.6E6	191.8E6	456.462	423.761
4) L1 AR-1016-2	6.557	5.491	531.2E6	330.2E6	472.872	445.466
5) L1 AR-1016-3	6.623	5.684	334.2E6	157.6E6	484.536	437.135
6) L1 AR-1016-4	6.732	5.734	270.0E6	126.4E6	474.696	442.888
7) L1 AR-1016-5	7.043	5.964	249.6E6	158.9E6	461.183	436.239
31) L7 AR-1260-1	8.217	7.060	458.1E6	349.0E6	466.528	465.609
32) L7 AR-1260-2	8.480	7.257	539.5E6	493.9E6	475.144	472.872
33) L7 AR-1260-3	8.847	7.412	338.7E6	420.4E6	478.868	483.005
34) L7 AR-1260-4	9.090	7.895	429.4E6	315.9E6	485.436	507.404
35) L7 AR-1260-5	9.434	8.142	832.2E6	862.3E6	494.339	503.278

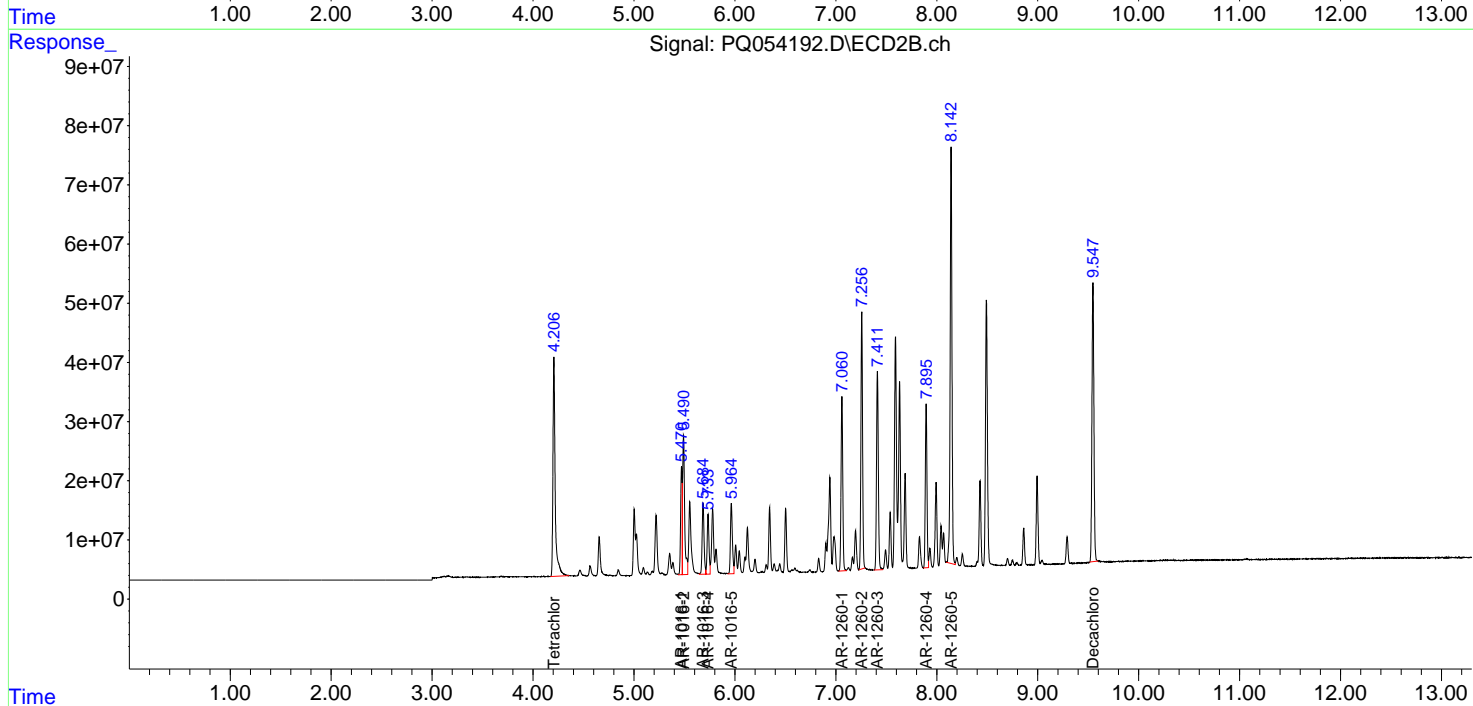
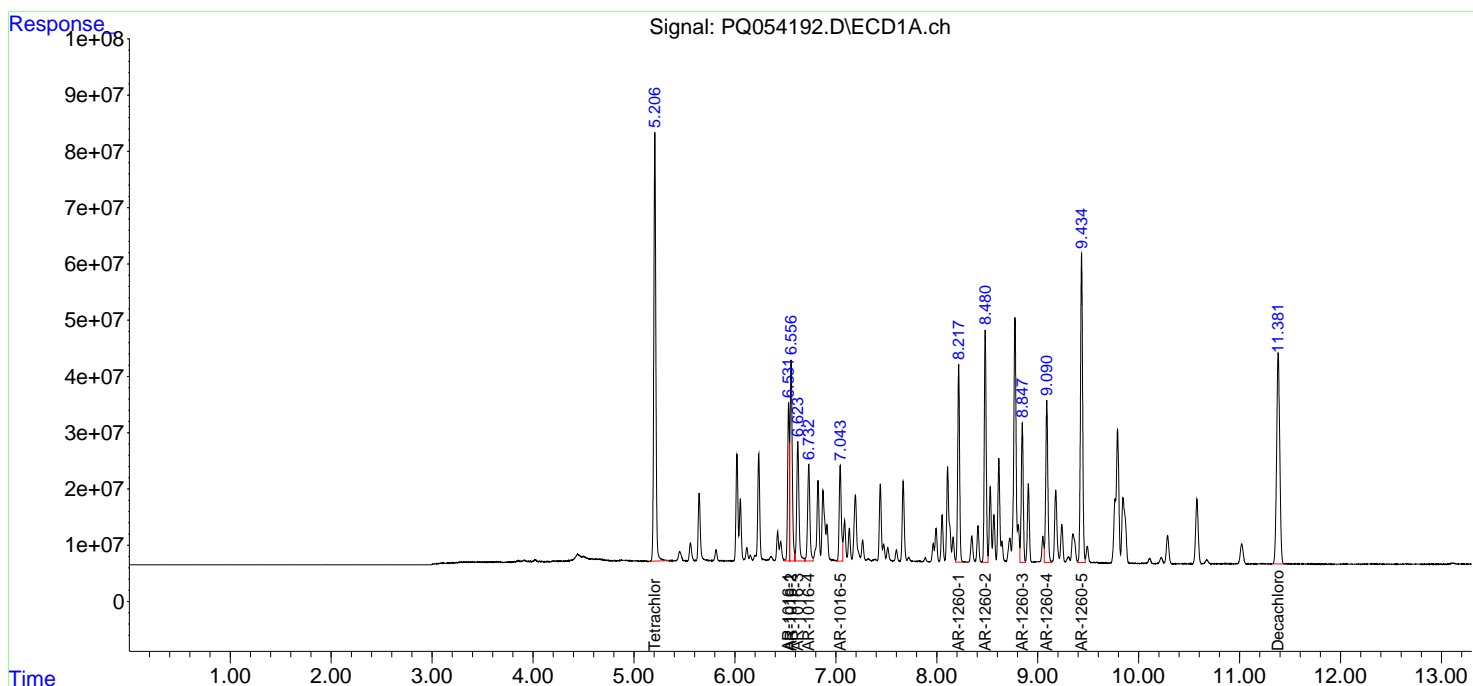
(f)=RT Delta > 1/2 Window (#)=Amounts differ by > 25% (m)=manual int.

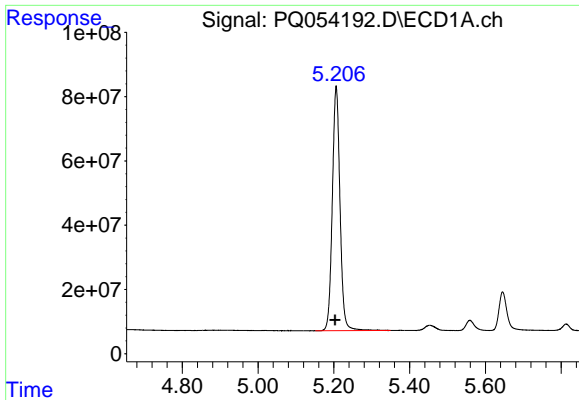
Data Path : Z:\pestpcbsrv\HPCHEM1\ECD_Q\Data\PQ072921\
 Data File : PQ054192.D
 Signal(s) : Signal #1: ECD1A.ch Signal #2: ECD2B.ch
 Acq On : 30 Jul 2021 09:58
 Operator : AJ\MA
 Sample : AR1660CCC500
 Misc :
 ALS Vial : 3 Sample Multiplier: 1

Instrument :
 ECD_Q
 ClientSampled :
 AR1660CCC500

Integration File signal 1: autoint1.e
 Integration File signal 2: autoint2.e
 Quant Time: Jul 31 07:15:48 2021
 Quant Method : Z:\pestpcbsrv\HPCHEM1\ECD_Q\Method\PQ072921.M
 Quant Title : GC EXTRACTABLES
 QLast Update : Fri Jul 30 02:37:02 2021
 Response via : Initial Calibration
 Integrator: ChemStation

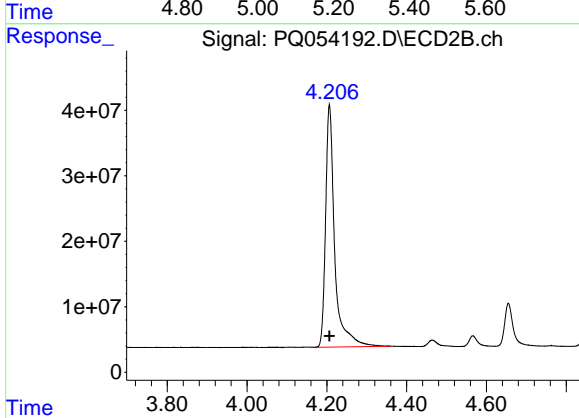
Volume Inj. : 2 µl
 Signal #1 Phase : ZB-MR1 Signal #2 Phase: ZB-MR2
 Signal #1 Info : 30Mx0.32mmx 0.50µ Signal #2 Info : 30M x 0.32mm x 0.25µm



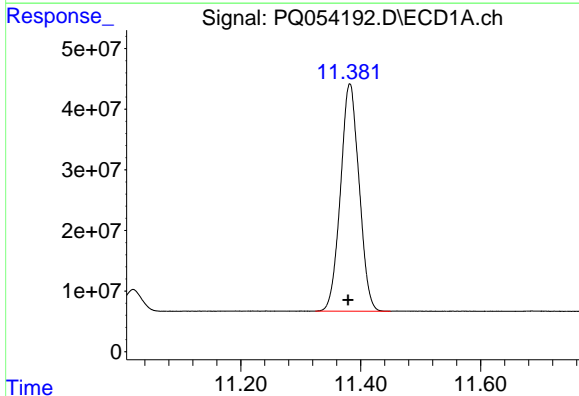


#1 Tetrachloro-m-xylene
 R.T.: 5.206 min
 Delta R.T.: 0.003 min
 Response: 1069660171
 Conc: 45.81 ng/ml

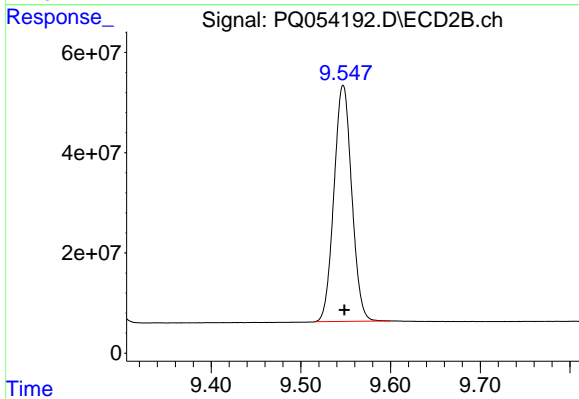
Instrument :
 ECD_Q
 ClientSampleId :
 AR1660CCC500



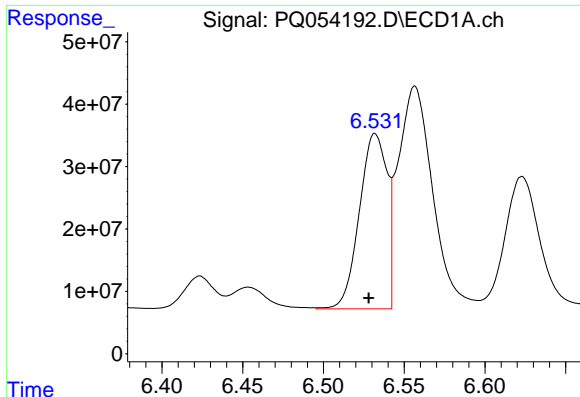
#1 Tetrachloro-m-xylene
 R.T.: 4.207 min
 Delta R.T.: 0.000 min
 Response: 587846933
 Conc: 41.58 ng/ml



#2 Decachlorobiphenyl
 R.T.: 11.382 min
 Delta R.T.: 0.003 min
 Response: 808046415
 Conc: 48.02 ng/ml



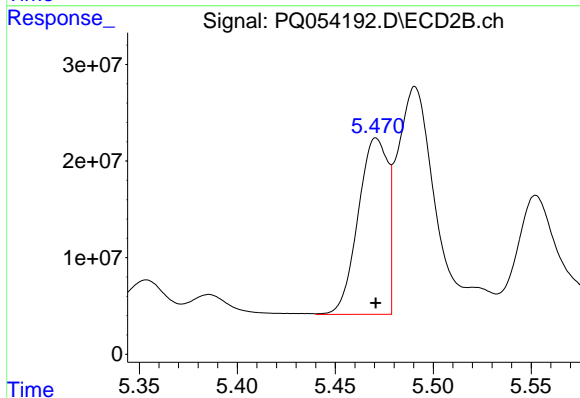
#2 Decachlorobiphenyl
 R.T.: 9.547 min
 Delta R.T.: -0.001 min
 Response: 649386348
 Conc: 51.48 ng/ml



#3 AR-1016-1

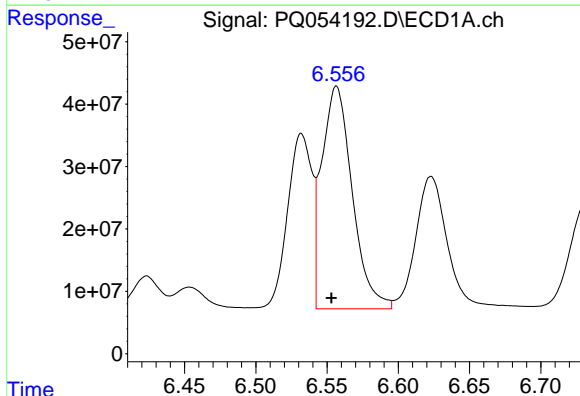
R.T.: 6.532 min
Delta R.T.: 0.004 min
Response: 334579853
Conc: 456.46 ng/ml

Instrument :
ECD_Q
ClientSampled :
AR1660CCC500



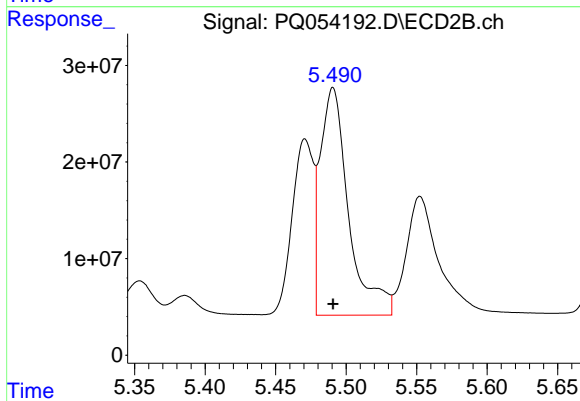
#3 AR-1016-1

R.T.: 5.471 min
Delta R.T.: 0.000 min
Response: 191833125
Conc: 423.76 ng/ml



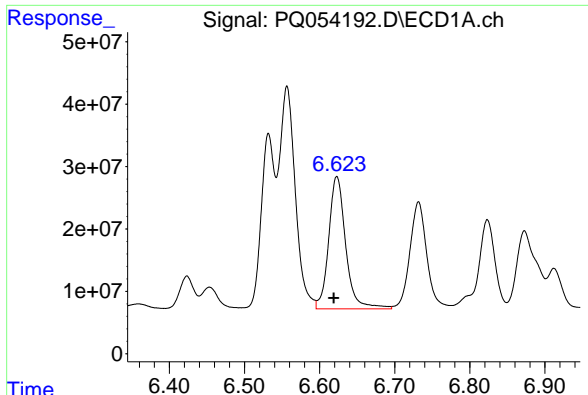
#4 AR-1016-2

R.T.: 6.557 min
Delta R.T.: 0.004 min
Response: 531157193
Conc: 472.87 ng/ml



#4 AR-1016-2

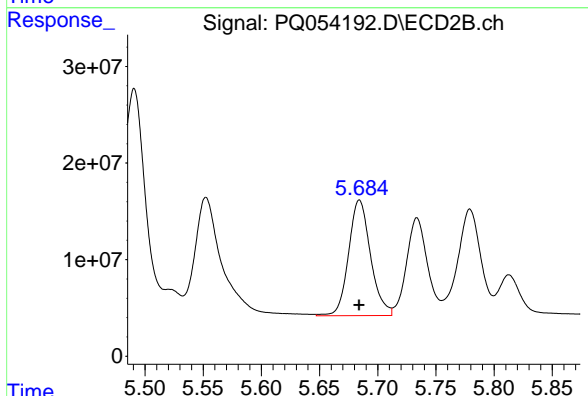
R.T.: 5.491 min
Delta R.T.: 0.000 min
Response: 330198187
Conc: 445.47 ng/ml



#5 AR-1016-3

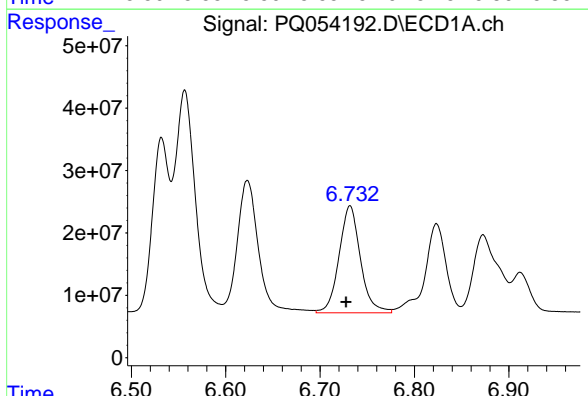
R.T.: 6.623 min
 Delta R.T.: 0.004 min
 Response: 334232291
 Conc: 484.54 ng/ml

Instrument :
 ECD_Q
 ClientSampleId :
 AR1660CCC500



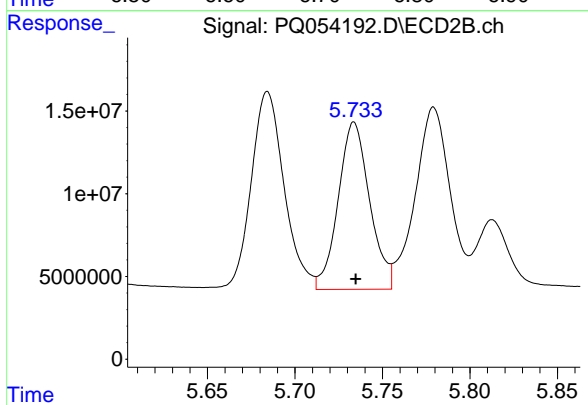
#5 AR-1016-3

R.T.: 5.684 min
 Delta R.T.: 0.000 min
 Response: 157591063
 Conc: 437.14 ng/ml



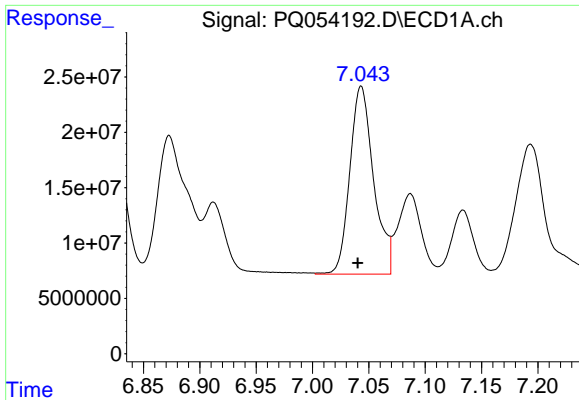
#6 AR-1016-4

R.T.: 6.732 min
 Delta R.T.: 0.004 min
 Response: 270049487
 Conc: 474.70 ng/ml



#6 AR-1016-4

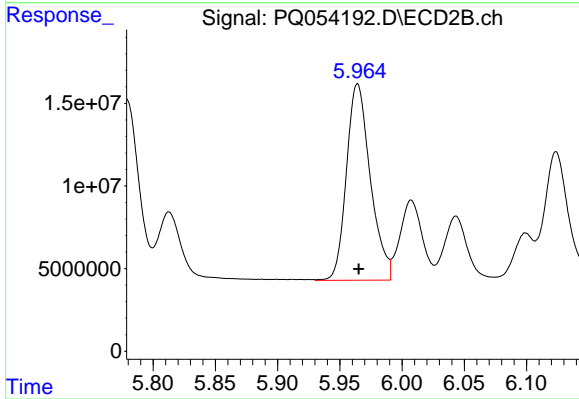
R.T.: 5.734 min
 Delta R.T.: -0.001 min
 Response: 126407754
 Conc: 442.89 ng/ml



#7 AR-1016-5

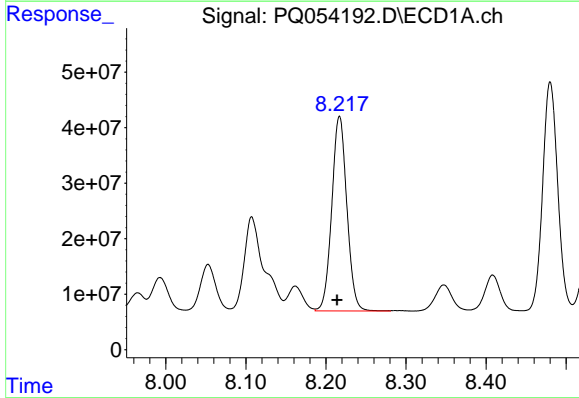
R.T.: 7.043 min
 Delta R.T.: 0.003 min
 Response: 249633294
 Conc: 461.18 ng/ml

Instrument :
 ECD_Q
 ClientSampleId :
 AR1660CCC500



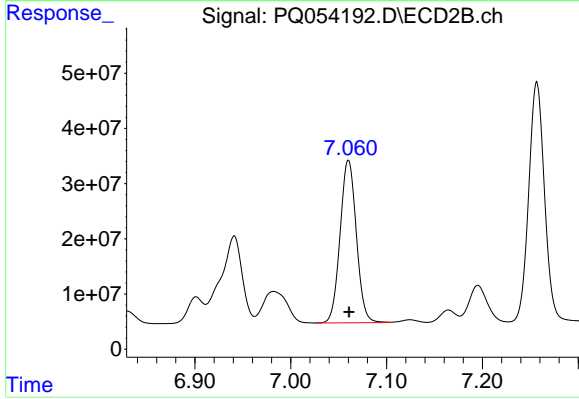
#7 AR-1016-5

R.T.: 5.964 min
 Delta R.T.: 0.000 min
 Response: 158945406
 Conc: 436.24 ng/ml



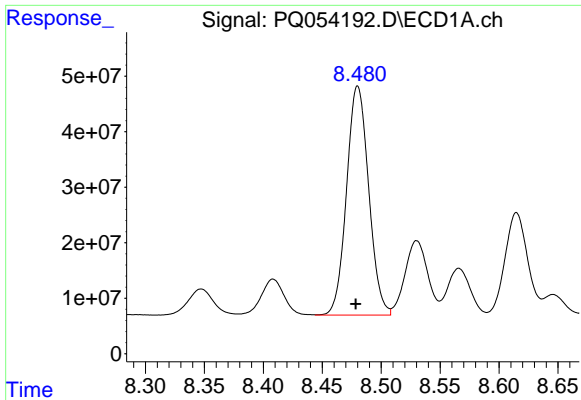
#31 AR-1260-1

R.T.: 8.217 min
 Delta R.T.: 0.003 min
 Response: 458056092
 Conc: 466.53 ng/ml



#31 AR-1260-1

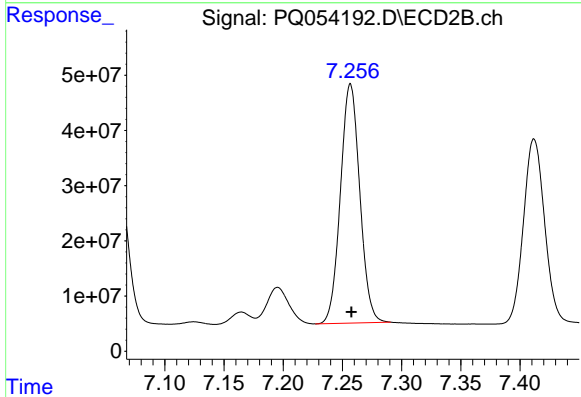
R.T.: 7.060 min
 Delta R.T.: 0.000 min
 Response: 349004697
 Conc: 465.61 ng/ml



#32 AR-1260-2

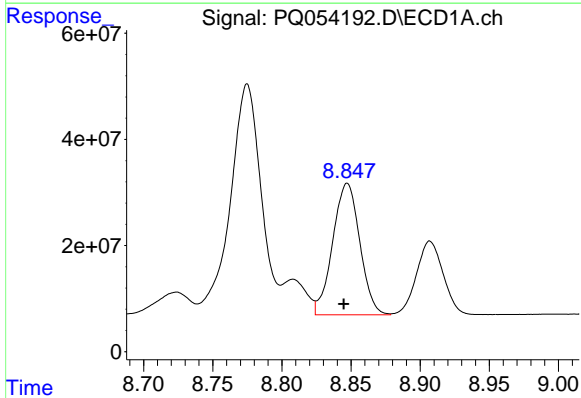
R.T.: 8.480 min
 Delta R.T.: 0.002 min
 Response: 539461544
 Conc: 475.14 ng/ml

Instrument :
 ECD_Q
 ClientSampleId :
 AR1660CCC500



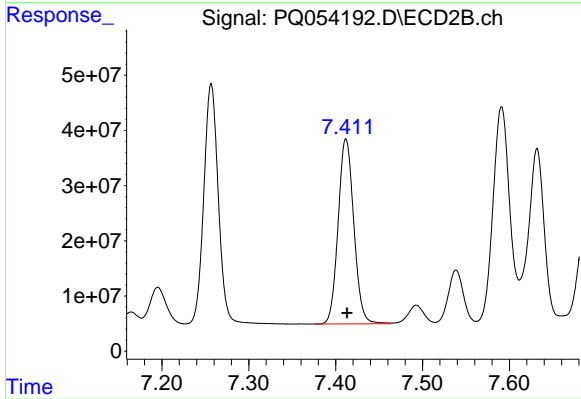
#32 AR-1260-2

R.T.: 7.257 min
 Delta R.T.: 0.000 min
 Response: 493944082
 Conc: 472.87 ng/ml



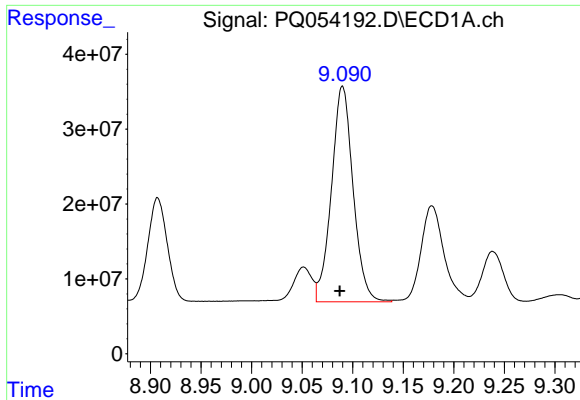
#33 AR-1260-3

R.T.: 8.847 min
 Delta R.T.: 0.002 min
 Response: 338738058
 Conc: 478.87 ng/ml



#33 AR-1260-3

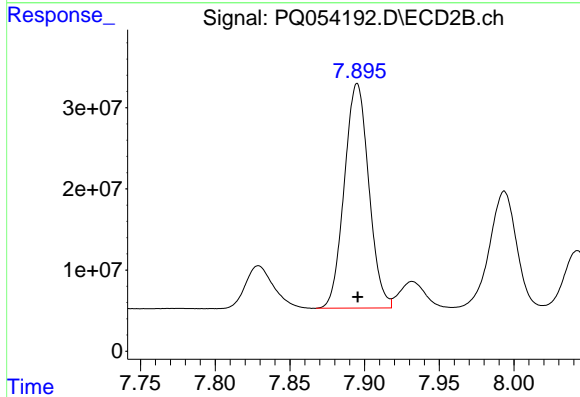
R.T.: 7.412 min
 Delta R.T.: -0.001 min
 Response: 420354609
 Conc: 483.00 ng/ml



#34 AR-1260-4

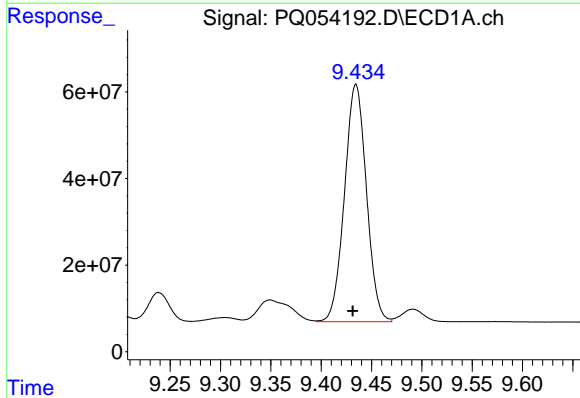
R.T.: 9.090 min
 Delta R.T.: 0.003 min
 Response: 429432209
 Conc: 485.44 ng/ml

Instrument :
 ECD_Q
 ClientSampleId :
 AR1660CCC500



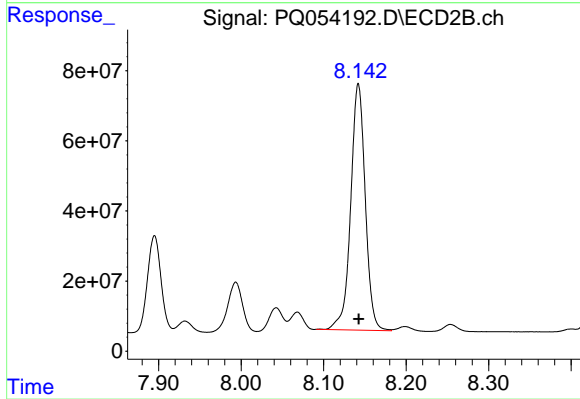
#34 AR-1260-4

R.T.: 7.895 min
 Delta R.T.: 0.000 min
 Response: 315927705
 Conc: 507.40 ng/ml



#35 AR-1260-5

R.T.: 9.434 min
 Delta R.T.: 0.003 min
 Response: 832238554
 Conc: 494.34 ng/ml



#35 AR-1260-5

R.T.: 8.142 min
 Delta R.T.: 0.000 min
 Response: 862299308
 Conc: 503.28 ng/ml