

Data Path : Z:\pestpcbsrv\HPCHEM1\ECD_Q\Data\PQ072924\
 Data File : PQ067519.D
 Signal(s) : Signal #1: ECD1A.ch Signal #2: ECD2B.ch
 Acq On : 29 Jul 2024 10:09
 Operator : YP\AJ
 Sample : AR1248CCC400
 Misc :
 ALS Vial : 5 Sample Multiplier: 1

Instrument :
 ECD_Q
 ClientSampleId :
 AR12483156

Integration File signal 1: autoint1.e
 Integration File signal 2: autoint2.e
 Quant Time: Jul 30 01:25:43 2024
 Quant Method : Z:\pestpcbsrv\HPCHEM1\ECD_Q\Method\PQ072324CLP.M
 Quant Title : GC EXTRACTABLES
 QLast Update : Wed Jul 24 04:31:32 2024
 Response via : Initial Calibration
 Integrator: ChemStation

Volume Inj. : 1 µl
 Signal #1 Phase : ZB MR1 Signal #2 Phase: ZB MR2
 Signal #1 Info : 30Mx0.32mmx 0.5µm Signal #2 Info : 30M x 0.32mm x 0.25µm

| Compound | RT#1 | RT#2 | Resp#1 | Resp#2 | ng/ml | ng/ml |
|-----------------------------|-------|--------|----------|----------|----------|------------|
| ----- | | | | | | |
| System Monitoring Compounds | | | | | | |
| 1) SA Tetrachlo... | 3.461 | 2.828 | 123.4E6 | 131.0E6 | 17.189 | 20.064 |
| 2) SA Decachlor... | 8.743 | 7.612 | 78364216 | 116.0E6 | 35.658 | 38.811 |
| Target Compounds | | | | | | |
| 3) L1 AR-1016-1 | 4.576 | 3.837 | 39348879 | 43816975 | 232.024 | 243.534 |
| 4) L1 AR-1016-2 | 4.596 | 3.852 | 57502349 | 51829897 | 186.861 | 191.753 |
| 5) L1 AR-1016-3 | 4.654 | 4.015 | 27451697 | 34249802 | 146.729 | 226.097 # |
| 6) L1 AR-1016-4 | 4.745 | 4.062 | 30635579 | 77540063 | 203.684 | 573.916 # |
| 7) L1 AR-1016-5 | 5.038 | 4.258 | 73957545 | 90553819 | 451.814 | 544.159 |
| 8) L2 AR-1221-1 | 0.000 | 3.100f | 0 | 2617087 | N.D. | 33.476 # |
| 9) L2 AR-1221-2 | 3.742 | 3.100 | 2372800 | 2617087 | 43.982 | 50.315 |
| 10) L2 AR-1221-3 | 3.814 | 3.175 | 3676948 | 4317322 | 20.906 | 25.821 |
| 11) L3 AR-1232-1 | 3.814 | 3.175 | 3676948 | 4317322 | 31.085 | 32.444 |
| 12) L3 AR-1232-2 | 4.314 | 3.852 | 21462752 | 51829897 | 321.468 | 412.580 # |
| 13) L3 AR-1232-3 | 4.596 | 4.015 | 57502349 | 34249802 | 482.413 | 496.551 |
| 14) L3 AR-1232-4 | 4.745 | 4.100 | 30635579 | 73987551 | 540.901 | 1126.470 # |
| 15) L3 AR-1232-5 | 4.844 | 4.258 | 63948743 | 90553819 | 1503.393 | 1288.355 |
| 16) L4 AR-1242-1 | 4.576 | 3.837 | 39348879 | 43816975 | 276.580 | 270.866 |
| 17) L4 AR-1242-2 | 4.596 | 3.852 | 57502349 | 51829897 | 244.676 | 200.357 |
| 18) L4 AR-1242-3 | 4.654 | 4.015 | 27451697 | 34249802 | 190.571 | 258.985 # |
| 19) L4 AR-1242-4 | 4.745 | 4.100 | 30635579 | 73987551 | 272.641 | 562.775 # |
| 20) L4 AR-1242-5 | 5.475 | 4.598 | 80576456 | 116.0E6 | 642.328 | 707.696 |
| 21) L5 AR-1248-1 | 4.576 | 3.837 | 39348879 | 43816975 | 365.250 | 350.926 |
| 22) L5 AR-1248-2 | 4.844 | 4.062 | 63948743 | 77540063 | 396.533 | 385.227 |
| 23) L5 AR-1248-3 | 5.038 | 4.100 | 73957545 | 73987551 | 380.586 | 387.096 |
| 24) L5 AR-1248-4 | 5.439 | 4.258 | 75236288 | 90553819 | 367.052 | 380.807 |
| 25) L5 AR-1248-5 | 5.475 | 4.637 | 80576456 | 76779321 | 377.701 | 355.520 |
| 26) L6 AR-1254-1 | 5.410 | 4.598 | 60012819 | 116.0E6 | 270.991 | 332.052 |
| 27) L6 AR-1254-2 | 5.629 | 4.745 | 80697107 | 41178341 | 236.717 | 132.110 # |
| 28) L6 AR-1254-3 | 5.991 | 5.127 | 46484061 | 57952208 | 134.970 | 121.050 |
| 29) L6 AR-1254-4 | 6.282 | 5.355 | 25293344 | 35920602 | 112.933 | 133.645 |
| 30) L6 AR-1254-5 | 6.702 | 5.761 | 7145988 | 10041444 | 22.471 | 23.459 |
| 31) L7 AR-1260-1 | 6.159 | 5.261 | 4646444 | 26663167 | 16.030 | 80.215 # |
| 32) L7 AR-1260-2 | 6.424 | 5.446 | 3660505 | 6435522 | 10.313 | 16.291 # |
| 33) L7 AR-1260-3 | 0.000 | 5.584 | 0 | 6627334 | N.D. | 17.711 # |
| 34) L7 AR-1260-4 | 6.983 | 6.083 | 3473410 | 3132376 | 12.429 | 10.072 |
| 35) L7 AR-1260-5 | 7.325 | 6.295 | 1743944 | 1751130 | 3.262 | 2.636 |
| 36) L8 AR-1262-1 | 0.000 | 5.761f | 0 | 10041444 | N.D. | 24.064 # |
| 37) L8 AR-1262-2 | 7.325 | 6.295 | 1743944 | 1751130 | 3.404 | 2.545 # |

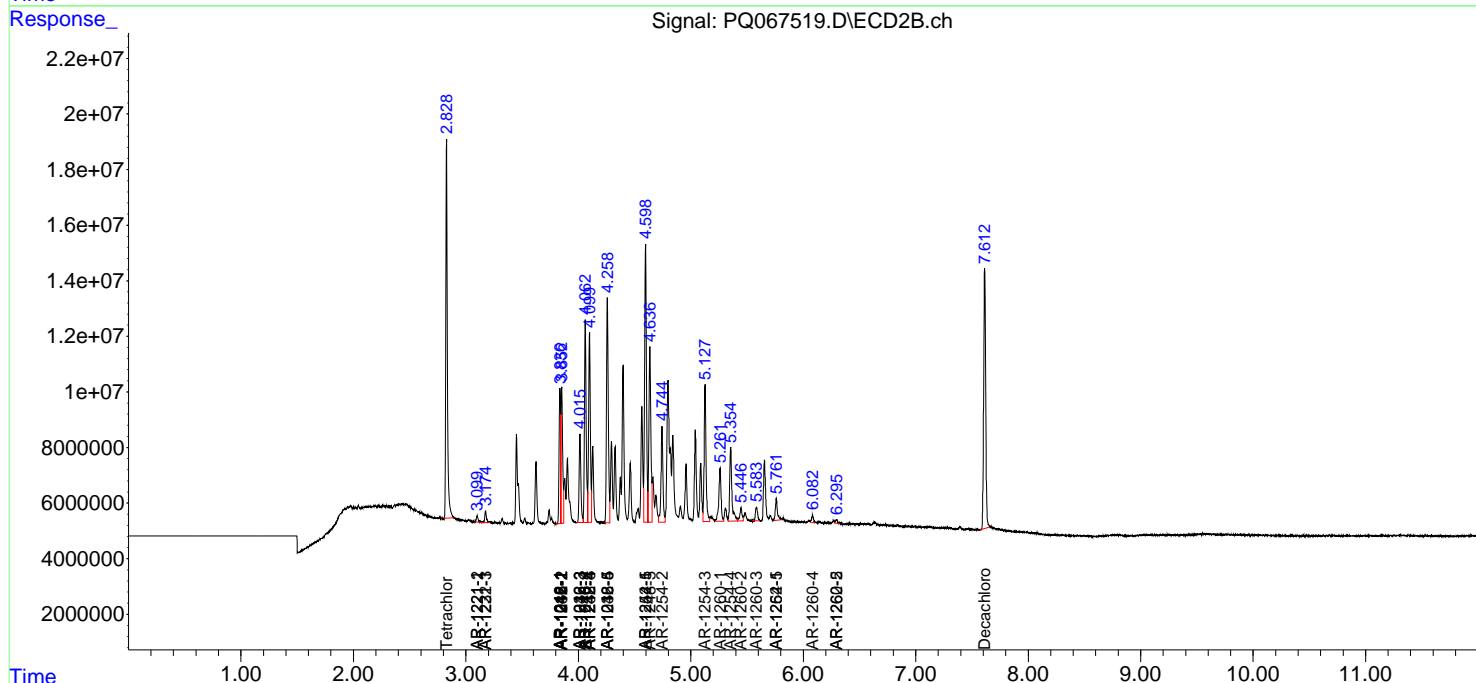
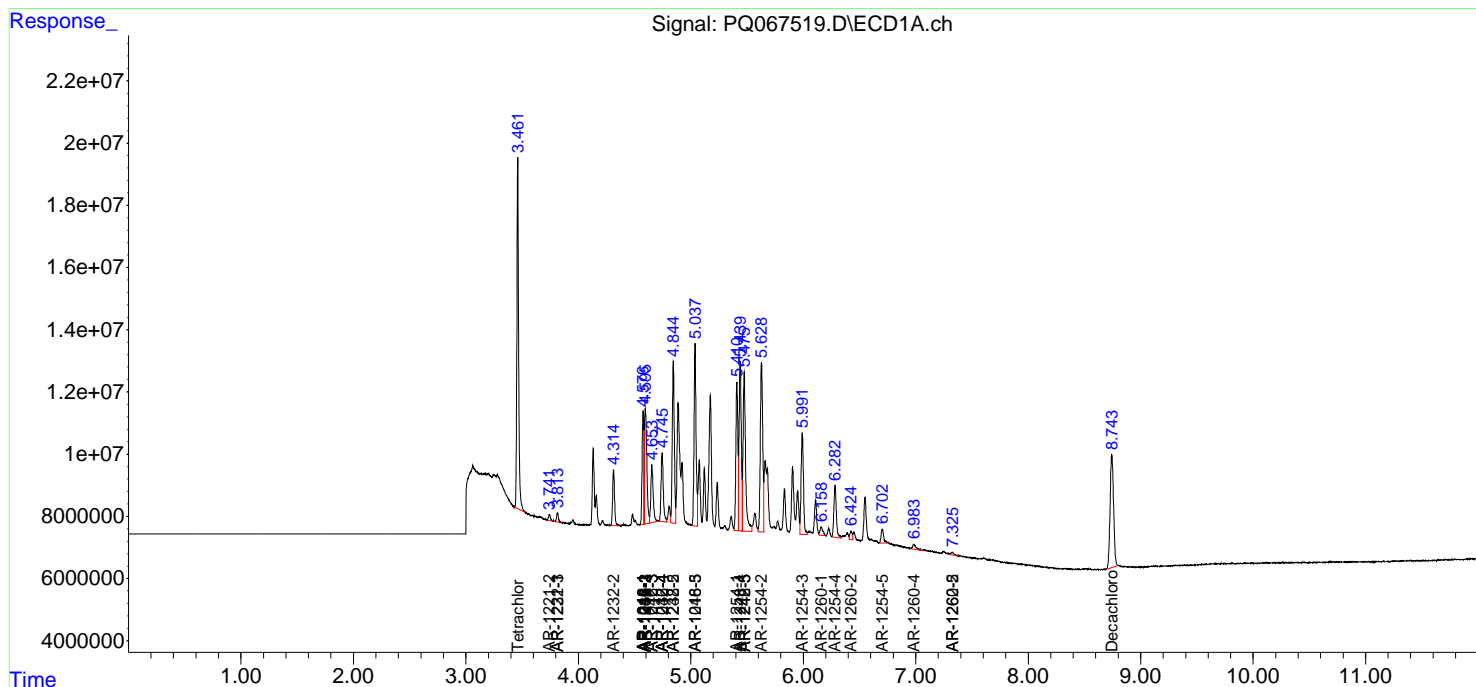
(f)=RT Delta > 1/2 Window (#)=Amounts differ by > 25% (m)=manual int.

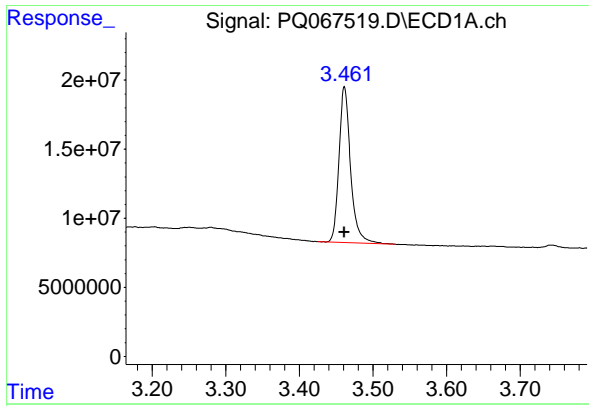
Data Path : Z:\pestpcbsrv\HPCHEM1\ECD_Q\Data\PQ072924\
 Data File : PQ067519.D
 Signal(s) : Signal #1: ECD1A.ch Signal #2: ECD2B.ch
 Acq On : 29 Jul 2024 10:09
 Operator : YP\AJ
 Sample : AR1248CCC400
 Misc :
 ALS Vial : 5 Sample Multiplier: 1

Instrument :
 ECD_Q
 ClientSampleId :
 AR12483156

Integration File signal 1: autoint1.e
 Integration File signal 2: autoint2.e
 Quant Time: Jul 30 01:25:43 2024
 Quant Method : Z:\pestpcbsrv\HPCHEM1\ECD_Q\Method\PQ072324CLP.M
 Quant Title : GC EXTRACTABLES
 QLast Update : Wed Jul 24 04:31:32 2024
 Response via : Initial Calibration
 Integrator: ChemStation

Volume Inj. : 1 µl
 Signal #1 Phase : ZB MR1 Signal #2 Phase: ZB MR2
 Signal #1 Info : 30Mx0.32mmx 0.5µm Signal #2 Info : 30M x 0.32mm x 0.25µm

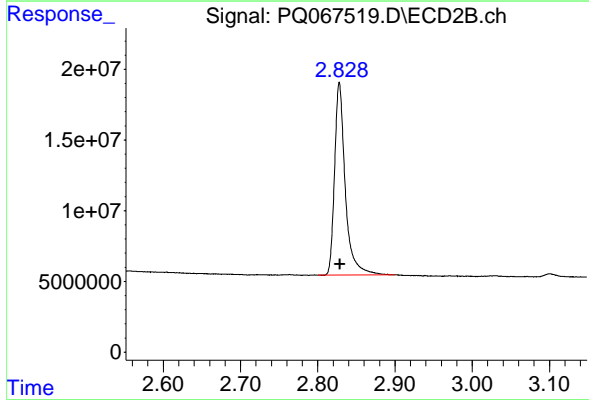




#1 Tetrachloro-m-xylene

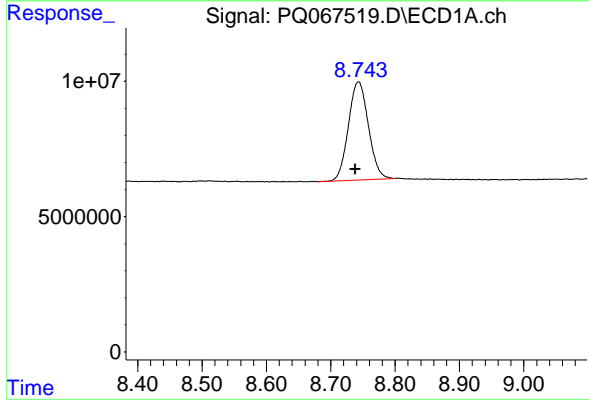
R.T.: 3.461 min
 Delta R.T.: 0.000 min
 Response: 123381558
 Conc: 17.19 ng/ml

Instrument :
 ECD_Q
 ClientSampleId :
 AR12483156



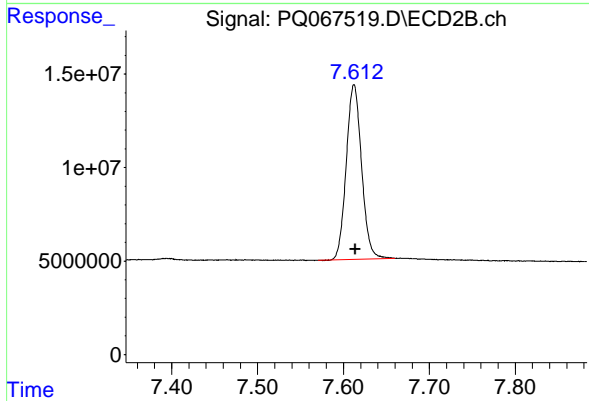
#1 Tetrachloro-m-xylene

R.T.: 2.828 min
 Delta R.T.: 0.000 min
 Response: 131044675
 Conc: 20.06 ng/ml



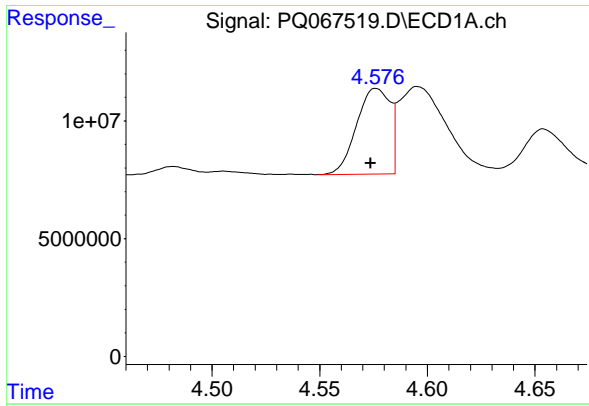
#2 Decachlorobiphenyl

R.T.: 8.743 min
 Delta R.T.: 0.005 min
 Response: 78364216
 Conc: 35.66 ng/ml



#2 Decachlorobiphenyl

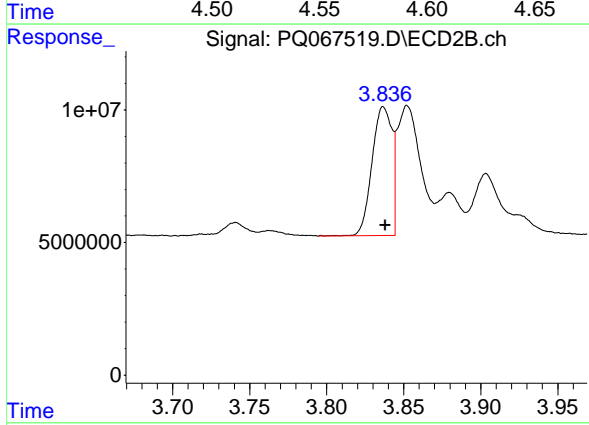
R.T.: 7.612 min
 Delta R.T.: -0.001 min
 Response: 115985365
 Conc: 38.81 ng/ml



#3 AR-1016-1

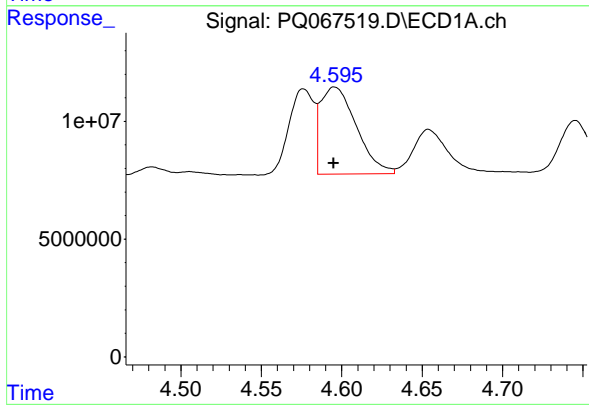
R.T.: 4.576 min
 Delta R.T.: 0.003 min
 Response: 39348879
 Conc: 232.02 ng/ml

Instrument :
 ECD_Q
 ClientSampleId :
 AR12483156



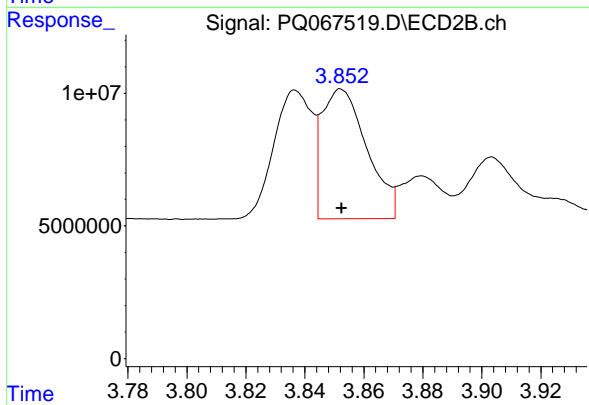
#3 AR-1016-1

R.T.: 3.837 min
 Delta R.T.: -0.001 min
 Response: 43816975
 Conc: 243.53 ng/ml



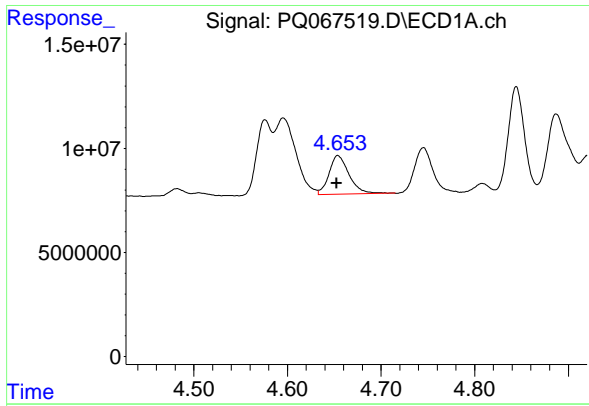
#4 AR-1016-2

R.T.: 4.596 min
 Delta R.T.: 0.000 min
 Response: 57502349
 Conc: 186.86 ng/ml



#4 AR-1016-2

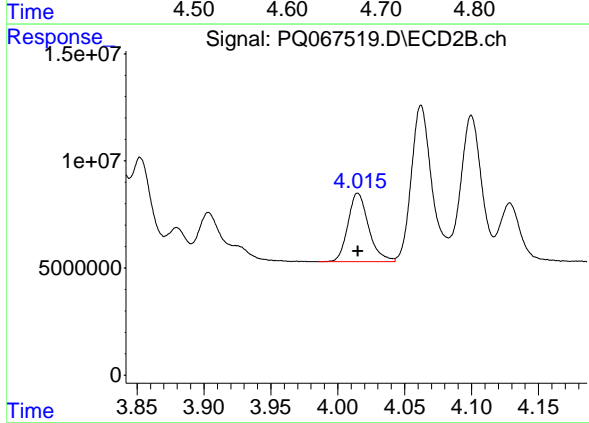
R.T.: 3.852 min
 Delta R.T.: 0.000 min
 Response: 51829897
 Conc: 191.75 ng/ml



#5 AR-1016-3

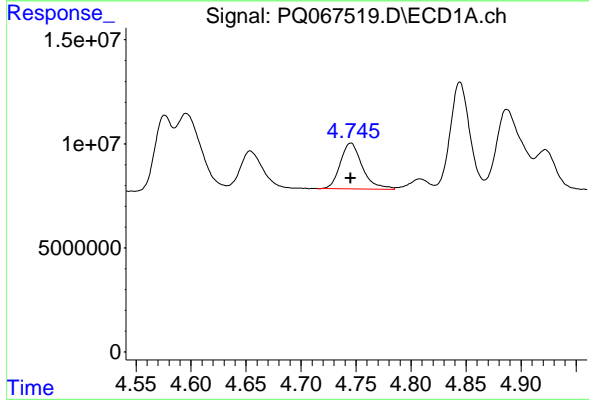
R.T.: 4.654 min
 Delta R.T.: 0.001 min
 Response: 27451697
 Conc: 146.73 ng/ml

Instrument :
 ECD_Q
 ClientSampleId :
 AR12483156



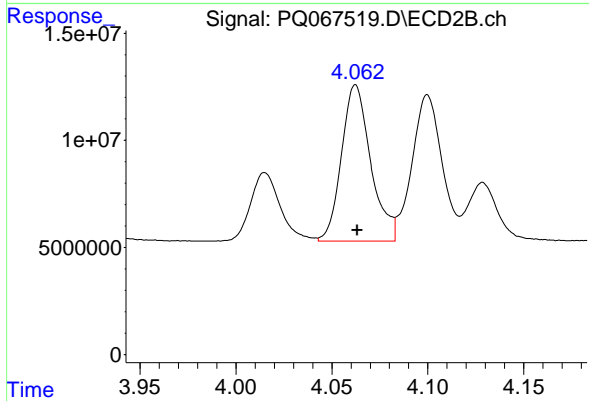
#5 AR-1016-3

R.T.: 4.015 min
 Delta R.T.: 0.000 min
 Response: 34249802
 Conc: 226.10 ng/ml



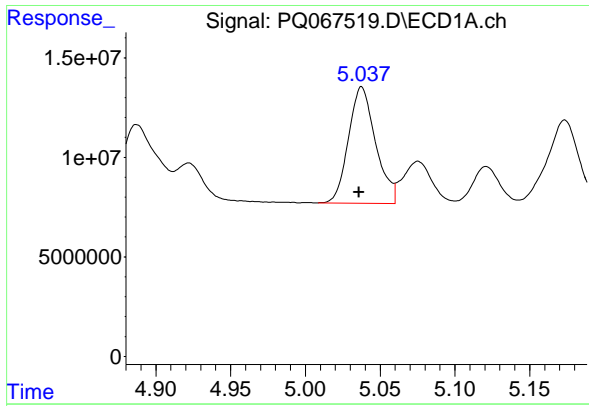
#6 AR-1016-4

R.T.: 4.745 min
 Delta R.T.: 0.000 min
 Response: 30635579
 Conc: 203.68 ng/ml



#6 AR-1016-4

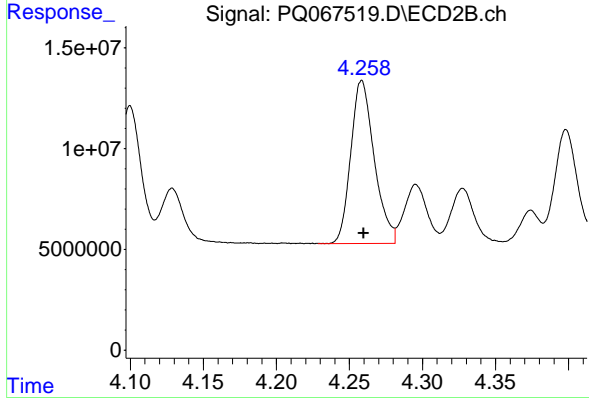
R.T.: 4.062 min
 Delta R.T.: -0.001 min
 Response: 77540063
 Conc: 573.92 ng/ml



#7 AR-1016-5

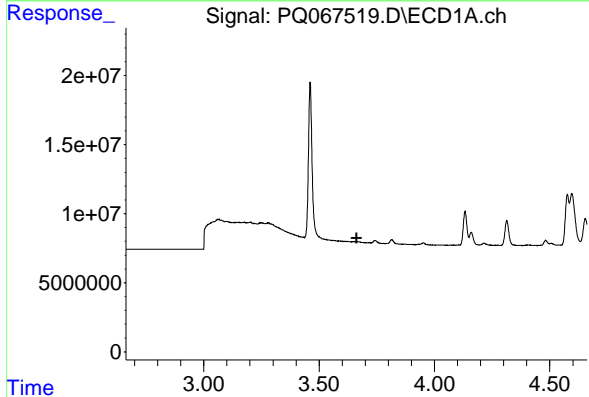
R.T.: 5.038 min
 Delta R.T.: 0.002 min
 Response: 73957545
 Conc: 451.81 ng/ml

Instrument :
 ECD_Q
 ClientSampleId :
 AR12483156



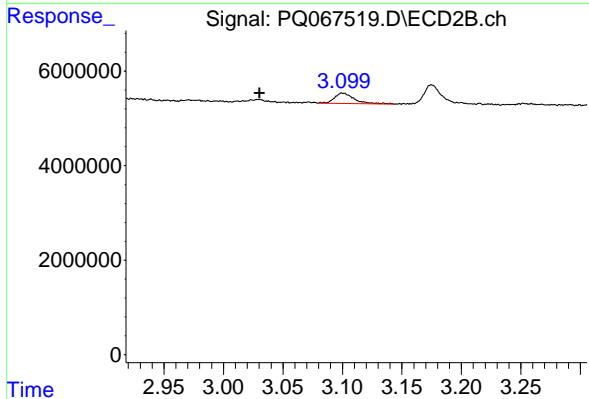
#7 AR-1016-5

R.T.: 4.258 min
 Delta R.T.: -0.001 min
 Response: 90553819
 Conc: 544.16 ng/ml



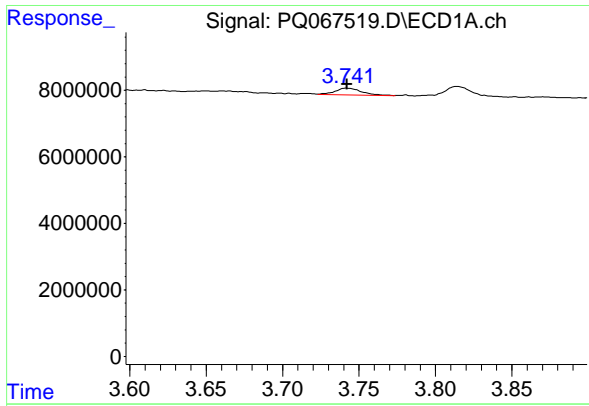
#8 AR-1221-1

R.T.: 0.000 min
 Exp R.T. : 3.662 min
 Response: 0
 Conc: N.D.



#8 AR-1221-1

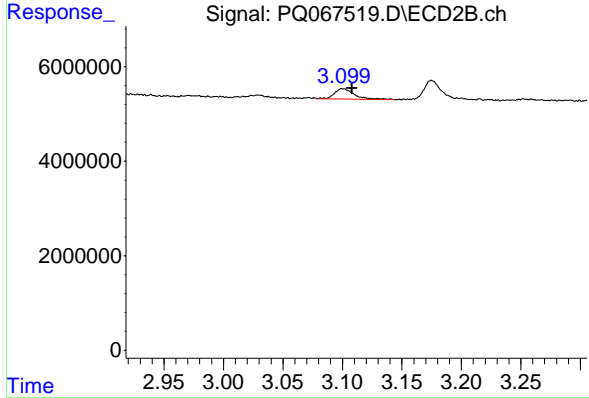
R.T.: 3.100 min
 Delta R.T.: 0.069 min
 Response: 2617087
 Conc: 33.48 ng/ml



#9 AR-1221-2

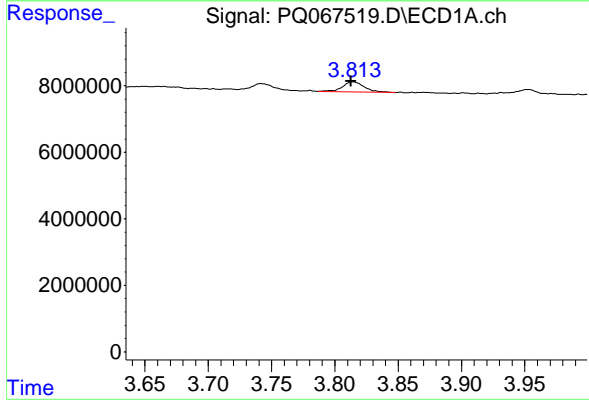
R.T.: 3.742 min
 Delta R.T.: 0.000 min
 Response: 2372800
 Conc: 43.98 ng/ml

Instrument : ECD_Q
 ClientSampleId : AR12483156



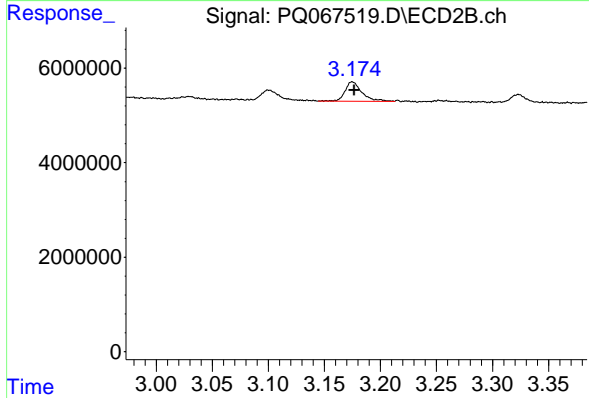
#9 AR-1221-2

R.T.: 3.100 min
 Delta R.T.: -0.008 min
 Response: 2617087
 Conc: 50.31 ng/ml



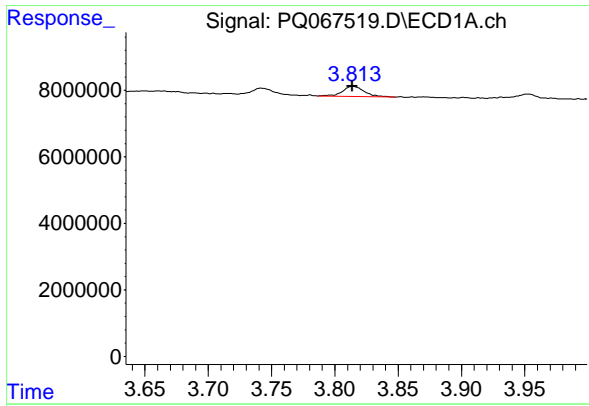
#10 AR-1221-3

R.T.: 3.814 min
 Delta R.T.: 0.001 min
 Response: 3676948
 Conc: 20.91 ng/ml



#10 AR-1221-3

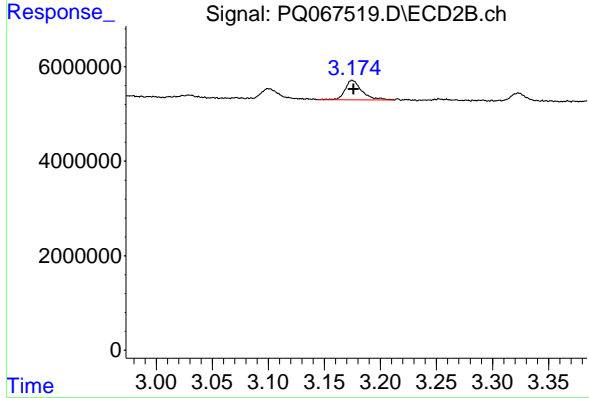
R.T.: 3.175 min
 Delta R.T.: -0.002 min
 Response: 4317322
 Conc: 25.82 ng/ml



#11 AR-1232-1

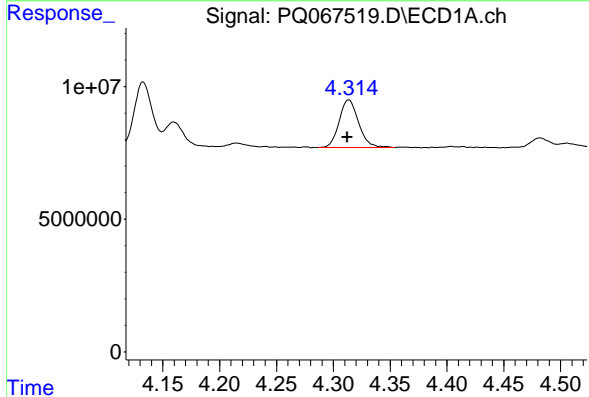
R.T.: 3.814 min
 Delta R.T.: 0.000 min
 Response: 3676948
 Conc: 31.08 ng/ml

Instrument :
 ECD_Q
 ClientSampleId :
 AR12483156



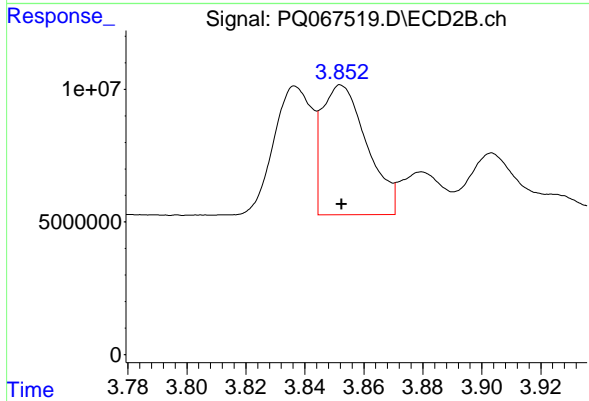
#11 AR-1232-1

R.T.: 3.175 min
 Delta R.T.: -0.001 min
 Response: 4317322
 Conc: 32.44 ng/ml



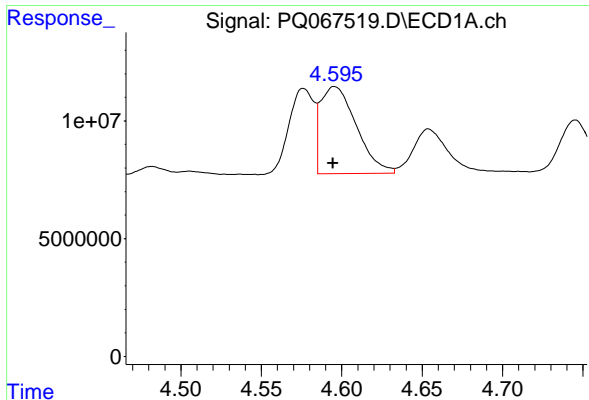
#12 AR-1232-2

R.T.: 4.314 min
 Delta R.T.: 0.001 min
 Response: 21462752
 Conc: 321.47 ng/ml



#12 AR-1232-2

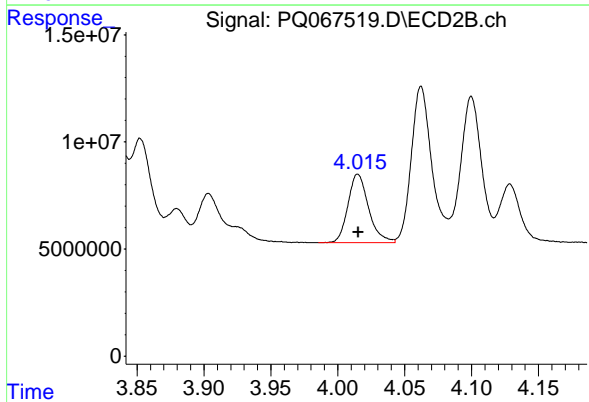
R.T.: 3.852 min
 Delta R.T.: 0.000 min
 Response: 51829897
 Conc: 412.58 ng/ml



#13 AR-1232-3

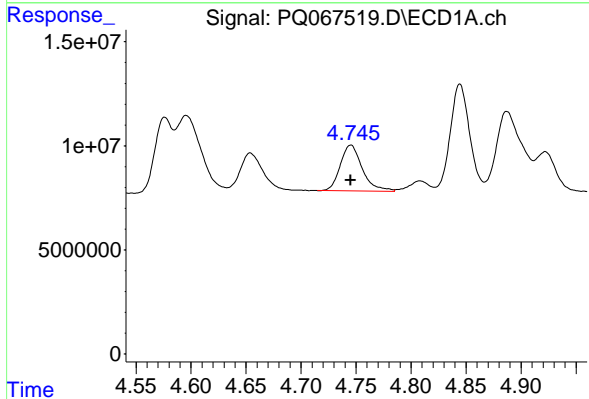
R.T.: 4.596 min
 Delta R.T.: 0.000 min
 Response: 57502349
 Conc: 482.41 ng/ml

Instrument :
 ECD_Q
 ClientSampleId :
 AR12483156



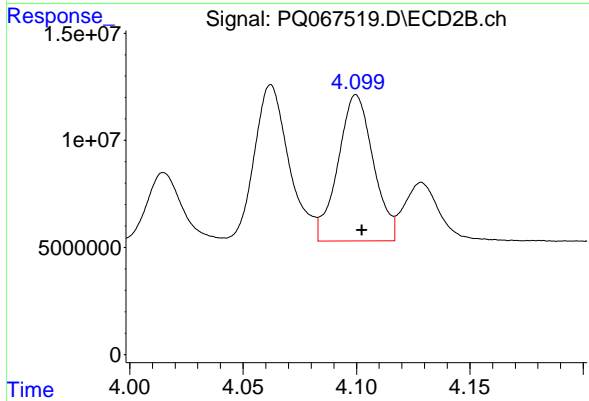
#13 AR-1232-3

R.T.: 4.015 min
 Delta R.T.: 0.000 min
 Response: 34249802
 Conc: 496.55 ng/ml



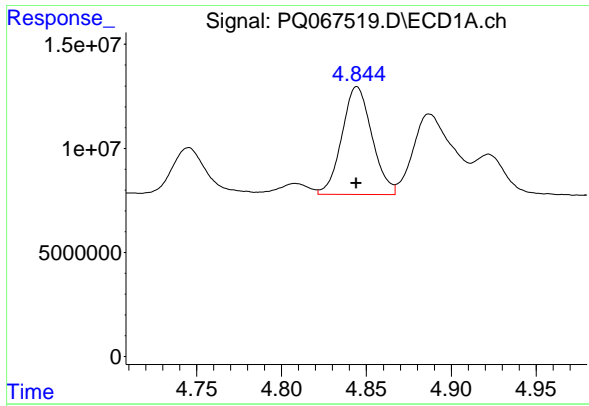
#14 AR-1232-4

R.T.: 4.745 min
 Delta R.T.: 0.000 min
 Response: 30635579
 Conc: 540.90 ng/ml



#14 AR-1232-4

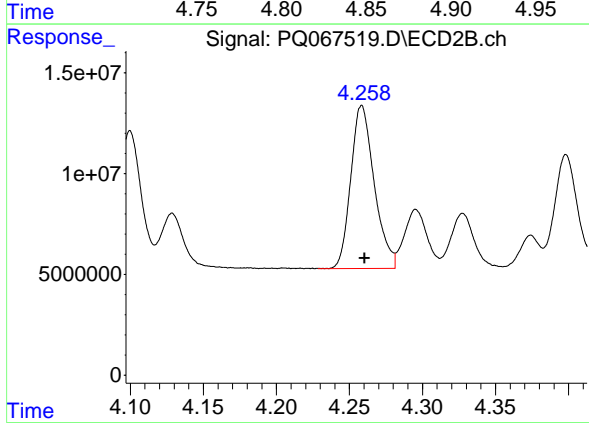
R.T.: 4.100 min
 Delta R.T.: -0.003 min
 Response: 73987551
 Conc: 1126.47 ng/ml



#15 AR-1232-5

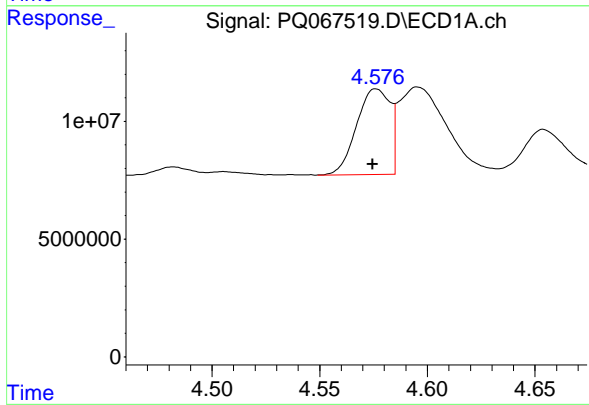
R.T.: 4.844 min
 Delta R.T.: 0.000 min
 Response: 63948743
 Conc: 1503.39 ng/ml

Instrument :
 ECD_Q
 ClientSampleId :
 AR12483156



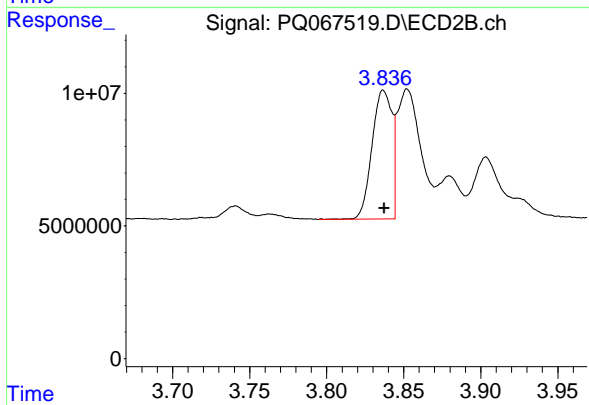
#15 AR-1232-5

R.T.: 4.258 min
 Delta R.T.: -0.002 min
 Response: 90553819
 Conc: 1288.35 ng/ml



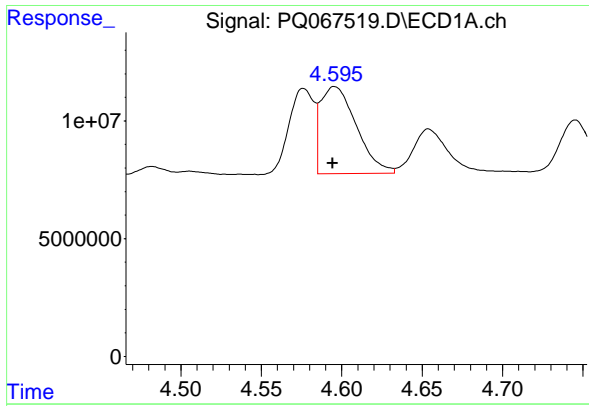
#16 AR-1242-1

R.T.: 4.576 min
 Delta R.T.: 0.002 min
 Response: 39348879
 Conc: 276.58 ng/ml



#16 AR-1242-1

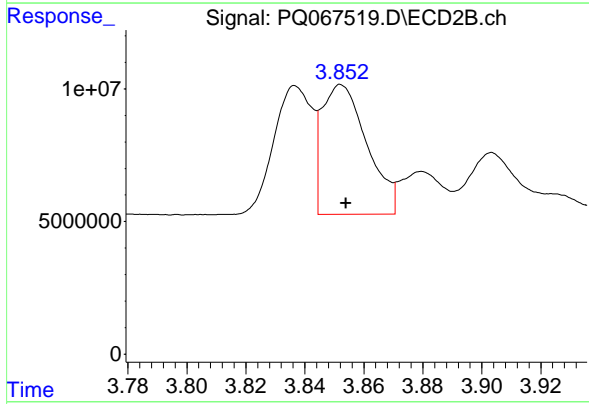
R.T.: 3.837 min
 Delta R.T.: 0.000 min
 Response: 43816975
 Conc: 270.87 ng/ml



#17 AR-1242-2

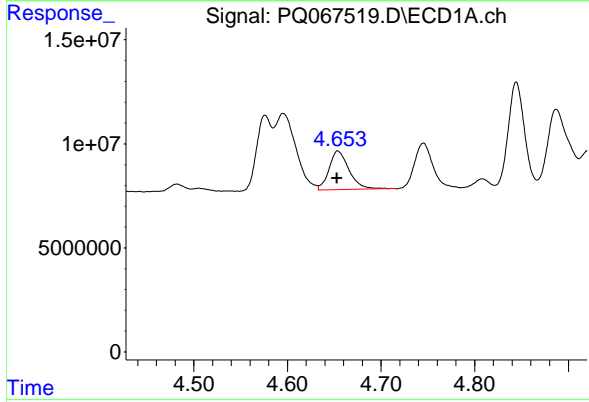
R.T.: 4.596 min
 Delta R.T.: 0.001 min
 Response: 57502349
 Conc: 244.68 ng/ml

Instrument :
 ECD_Q
 ClientSampleId :
 AR12483156



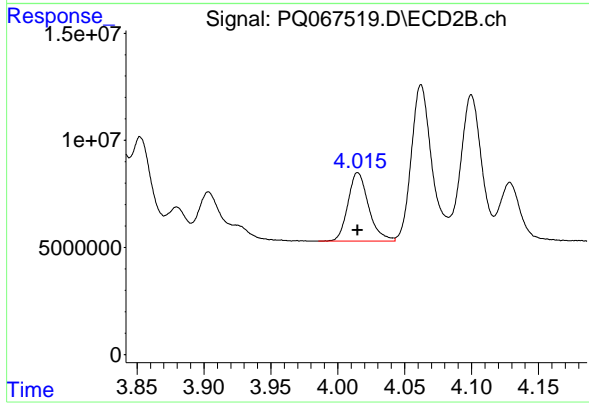
#17 AR-1242-2

R.T.: 3.852 min
 Delta R.T.: -0.002 min
 Response: 51829897
 Conc: 200.36 ng/ml



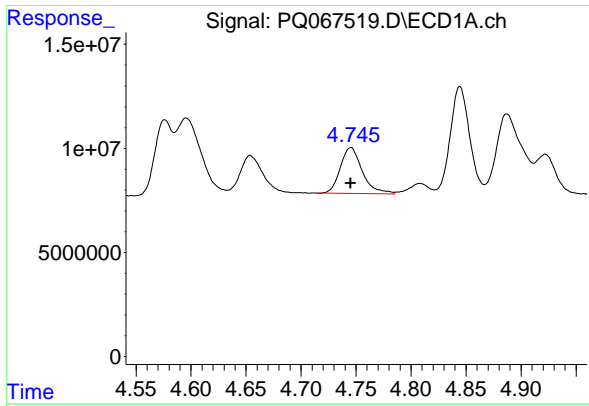
#18 AR-1242-3

R.T.: 4.654 min
 Delta R.T.: 0.001 min
 Response: 27451697
 Conc: 190.57 ng/ml



#18 AR-1242-3

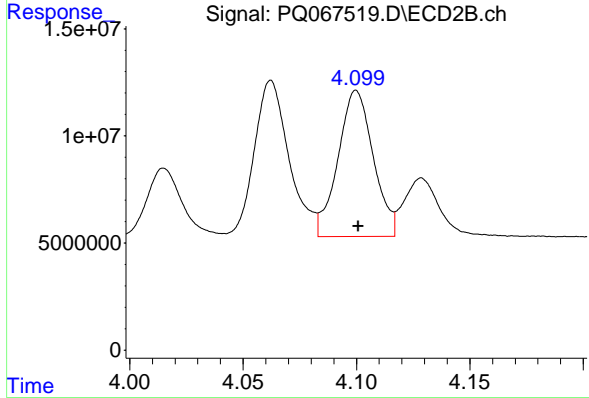
R.T.: 4.015 min
 Delta R.T.: 0.000 min
 Response: 34249802
 Conc: 258.99 ng/ml



#19 AR-1242-4

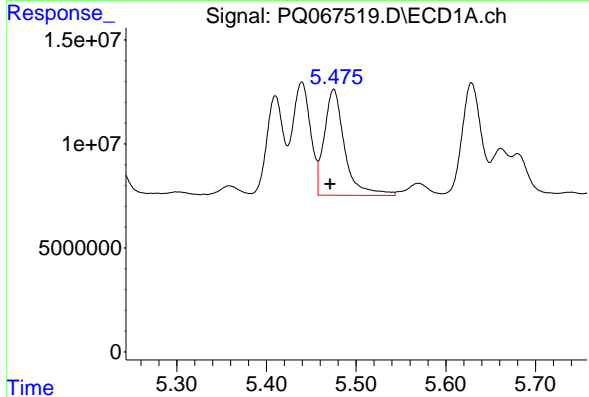
R.T.: 4.745 min
 Delta R.T.: 0.000 min
 Response: 30635579
 Conc: 272.64 ng/ml

Instrument :
 ECD_Q
 ClientSampleId :
 AR12483156



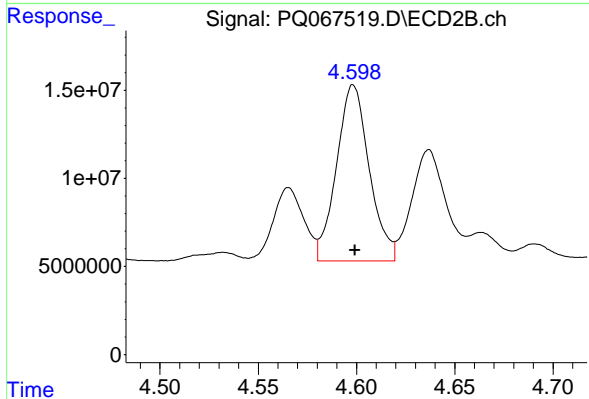
#19 AR-1242-4

R.T.: 4.100 min
 Delta R.T.: -0.001 min
 Response: 73987551
 Conc: 562.77 ng/ml



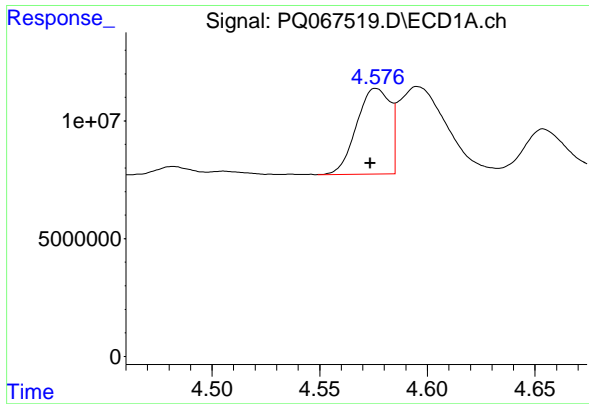
#20 AR-1242-5

R.T.: 5.475 min
 Delta R.T.: 0.004 min
 Response: 80576456
 Conc: 642.33 ng/ml



#20 AR-1242-5

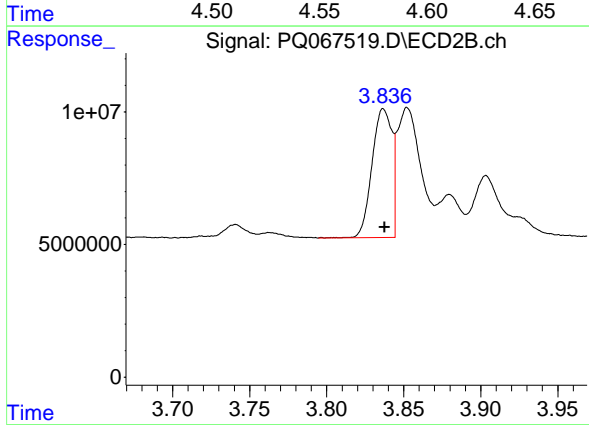
R.T.: 4.598 min
 Delta R.T.: 0.000 min
 Response: 115962334
 Conc: 707.70 ng/ml



#21 AR-1248-1

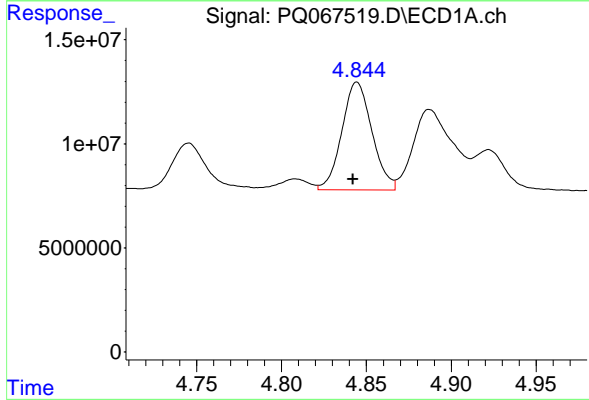
R.T.: 4.576 min
 Delta R.T.: 0.003 min
 Response: 39348879
 Conc: 365.25 ng/ml

Instrument :
 ECD_Q
 ClientSampleId :
 AR12483156



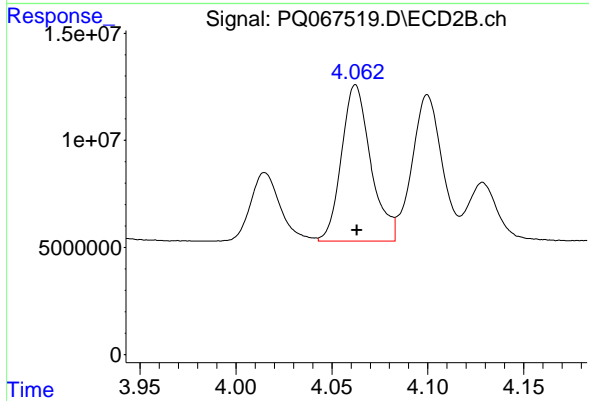
#21 AR-1248-1

R.T.: 3.837 min
 Delta R.T.: 0.000 min
 Response: 43816975
 Conc: 350.93 ng/ml



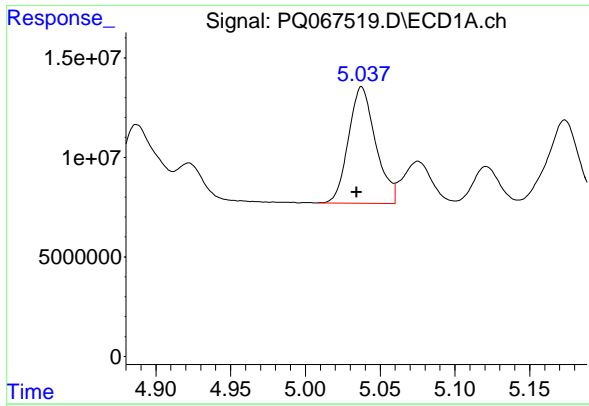
#22 AR-1248-2

R.T.: 4.844 min
 Delta R.T.: 0.002 min
 Response: 63948743
 Conc: 396.53 ng/ml



#22 AR-1248-2

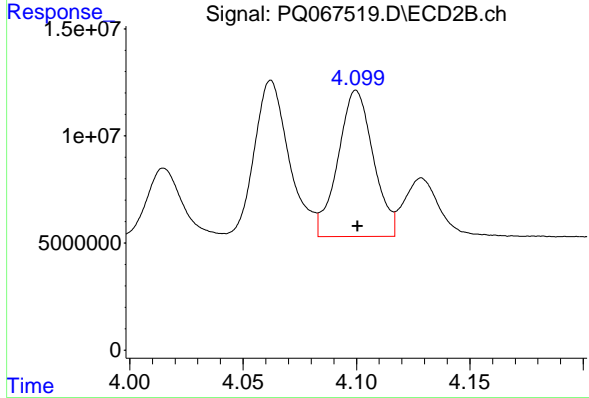
R.T.: 4.062 min
 Delta R.T.: 0.000 min
 Response: 77540063
 Conc: 385.23 ng/ml



#23 AR-1248-3

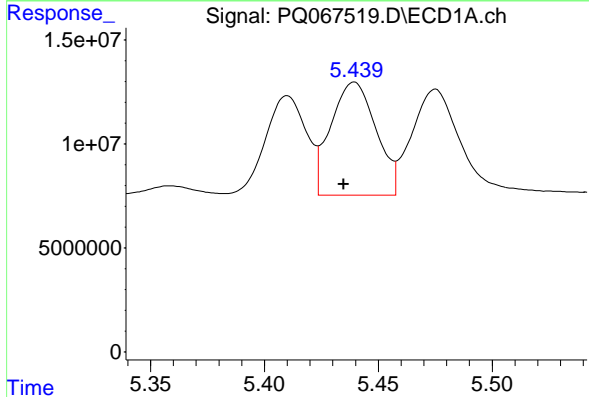
R.T.: 5.038 min
 Delta R.T.: 0.003 min
 Response: 73957545
 Conc: 380.59 ng/ml

Instrument :
 ECD_Q
 ClientSampleId :
 AR12483156



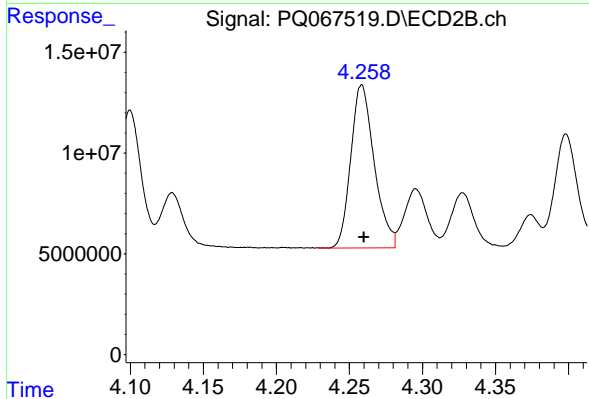
#23 AR-1248-3

R.T.: 4.100 min
 Delta R.T.: 0.000 min
 Response: 73987551
 Conc: 387.10 ng/ml



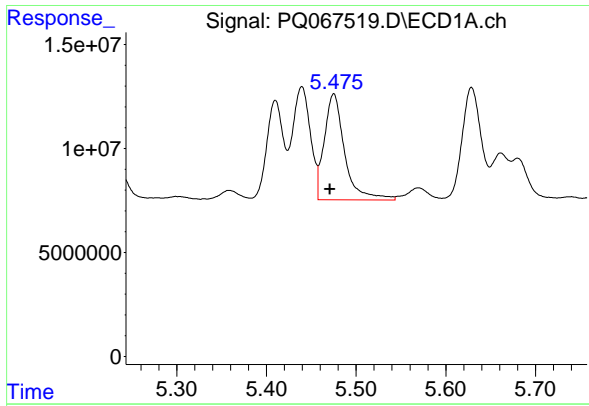
#24 AR-1248-4

R.T.: 5.439 min
 Delta R.T.: 0.005 min
 Response: 75236288
 Conc: 367.05 ng/ml



#24 AR-1248-4

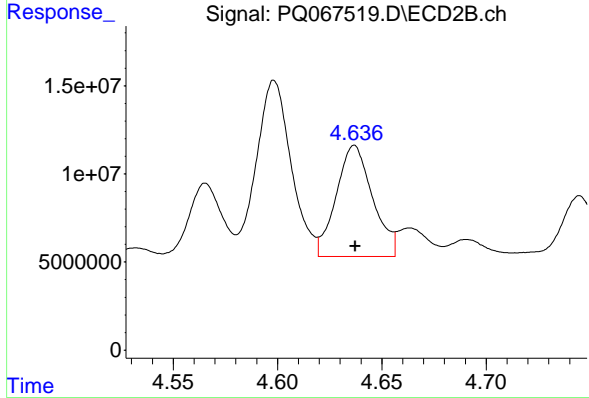
R.T.: 4.258 min
 Delta R.T.: -0.001 min
 Response: 90553819
 Conc: 380.81 ng/ml



#25 AR-1248-5

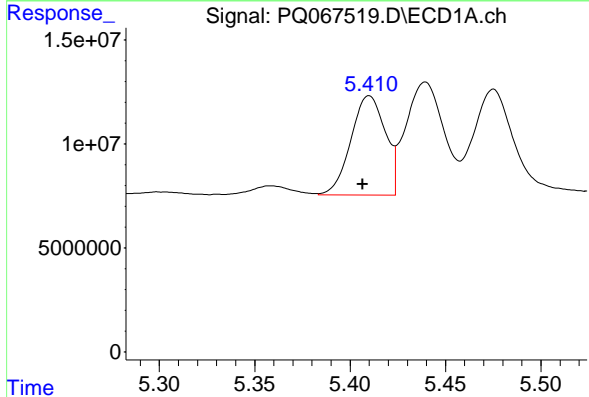
R.T.: 5.475 min
 Delta R.T.: 0.004 min
 Response: 80576456
 Conc: 377.70 ng/ml

Instrument : ECD_Q
 Client Sample Id : AR12483156



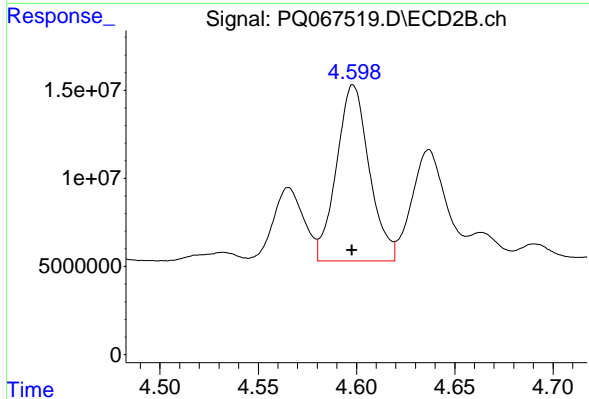
#25 AR-1248-5

R.T.: 4.637 min
 Delta R.T.: 0.000 min
 Response: 76779321
 Conc: 355.52 ng/ml



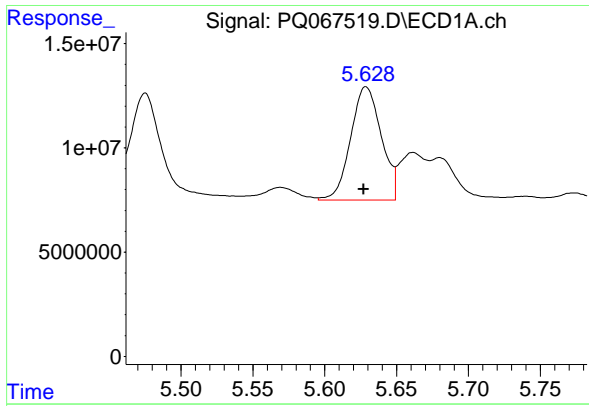
#26 AR-1254-1

R.T.: 5.410 min
 Delta R.T.: 0.003 min
 Response: 60012819
 Conc: 270.99 ng/ml



#26 AR-1254-1

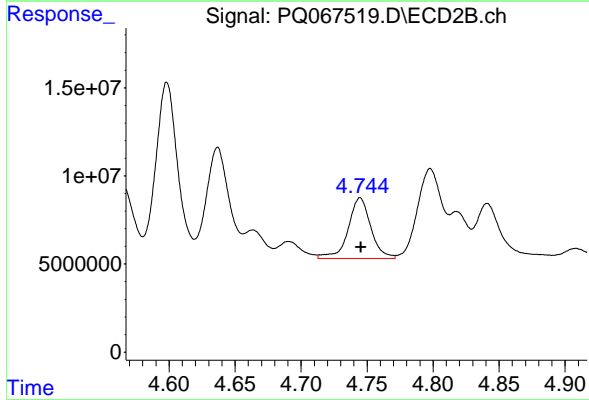
R.T.: 4.598 min
 Delta R.T.: 0.000 min
 Response: 115962334
 Conc: 332.05 ng/ml



#27 AR-1254-2

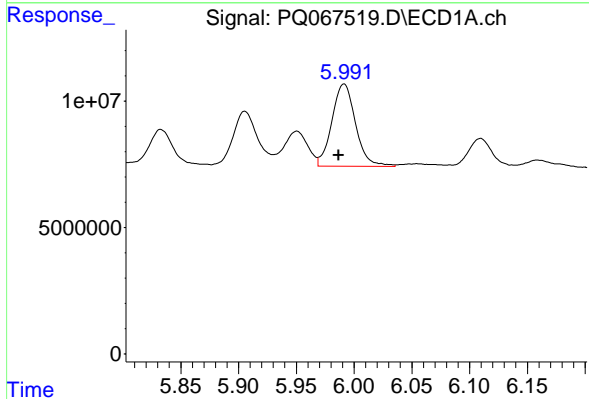
R.T.: 5.629 min
 Delta R.T.: 0.002 min
 Response: 80697107
 Conc: 236.72 ng/ml

Instrument :
 ECD_Q
 ClientSampleId :
 AR12483156



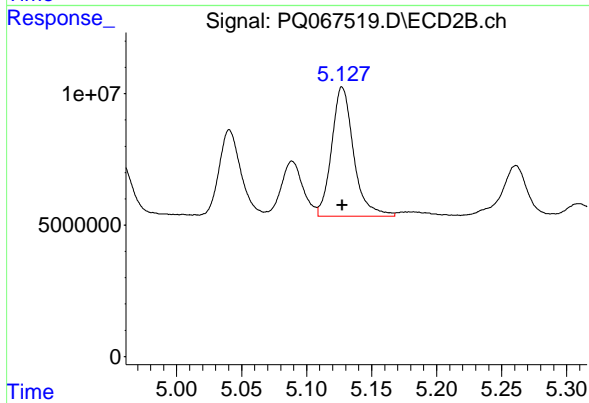
#27 AR-1254-2

R.T.: 4.745 min
 Delta R.T.: 0.000 min
 Response: 41178341
 Conc: 132.11 ng/ml



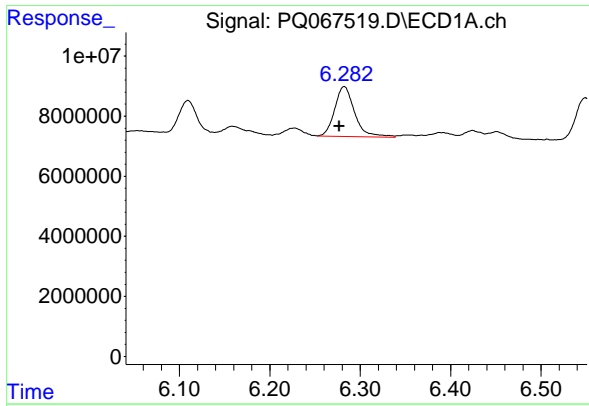
#28 AR-1254-3

R.T.: 5.991 min
 Delta R.T.: 0.005 min
 Response: 46484061
 Conc: 134.97 ng/ml



#28 AR-1254-3

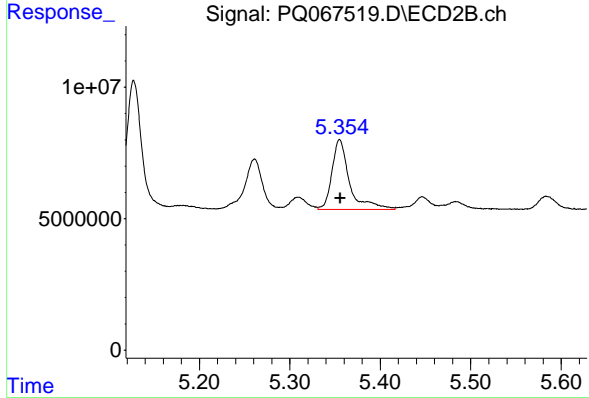
R.T.: 5.127 min
 Delta R.T.: 0.000 min
 Response: 57952208
 Conc: 121.05 ng/ml



#29 AR-1254-4

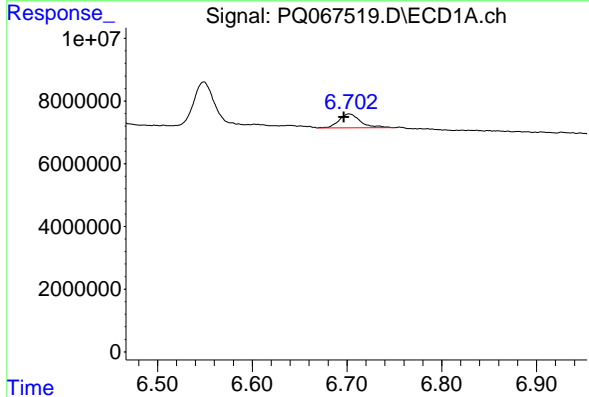
R.T.: 6.282 min
 Delta R.T.: 0.006 min
 Response: 25293344
 Conc: 112.93 ng/ml

Instrument :
 ECD_Q
 ClientSampleId :
 AR12483156



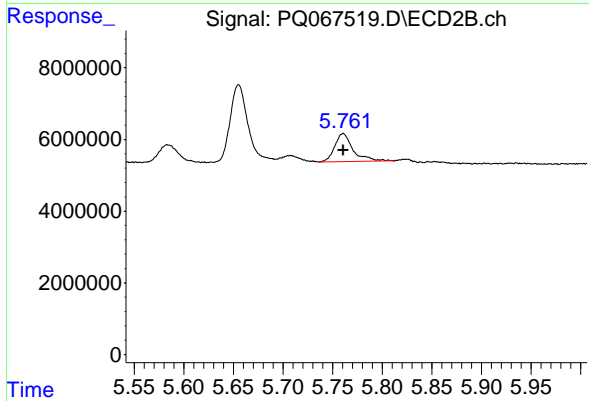
#29 AR-1254-4

R.T.: 5.355 min
 Delta R.T.: 0.000 min
 Response: 35920602
 Conc: 133.65 ng/ml



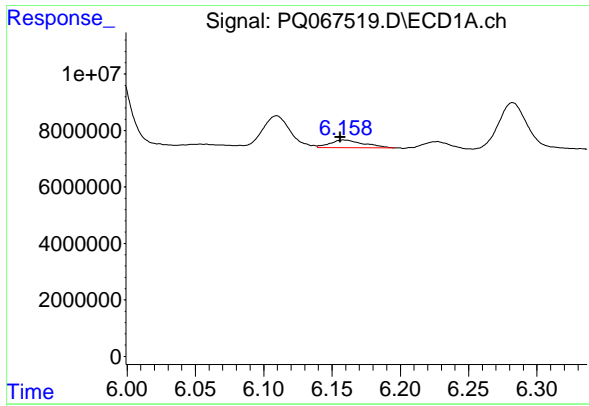
#30 AR-1254-5

R.T.: 6.702 min
 Delta R.T.: 0.006 min
 Response: 7145988
 Conc: 22.47 ng/ml



#30 AR-1254-5

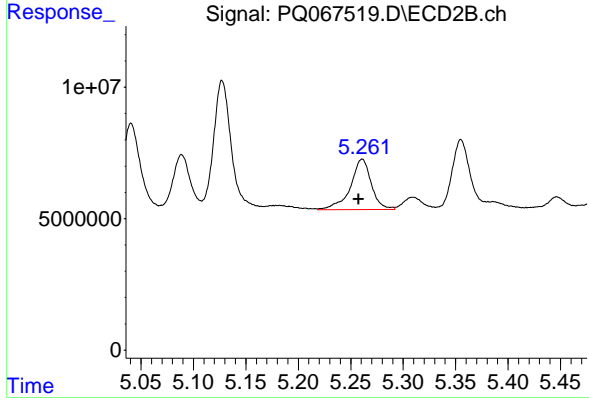
R.T.: 5.761 min
 Delta R.T.: 0.000 min
 Response: 10041444
 Conc: 23.46 ng/ml



#31 AR-1260-1

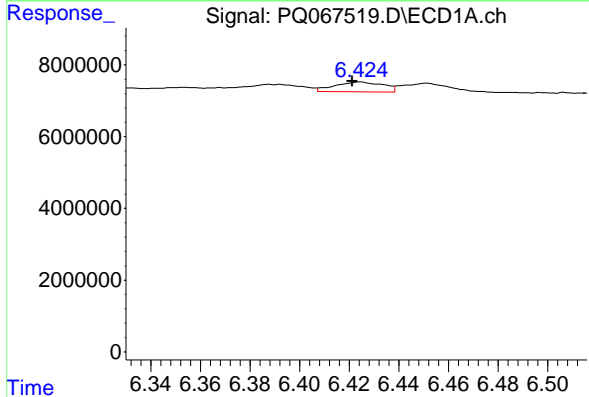
R.T.: 6.159 min
 Delta R.T.: 0.002 min
 Response: 4646444
 Conc: 16.03 ng/ml

Instrument :
 ECD_Q
 ClientSampleId :
 AR12483156



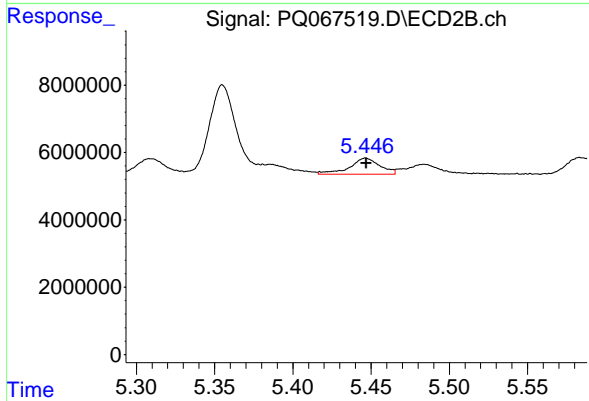
#31 AR-1260-1

R.T.: 5.261 min
 Delta R.T.: 0.003 min
 Response: 26663167
 Conc: 80.22 ng/ml



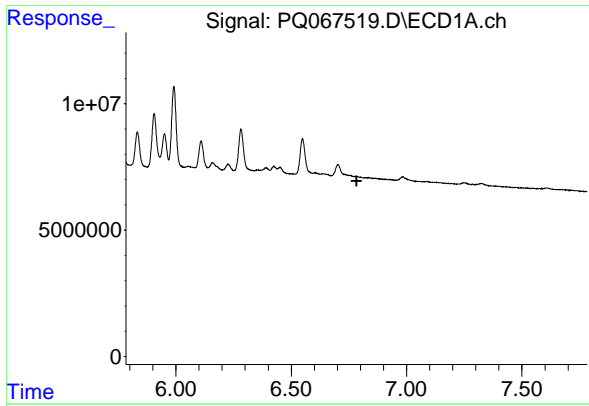
#32 AR-1260-2

R.T.: 6.424 min
 Delta R.T.: 0.003 min
 Response: 3660505
 Conc: 10.31 ng/ml



#32 AR-1260-2

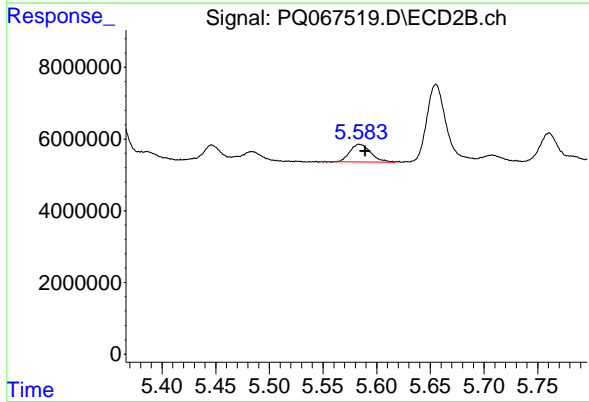
R.T.: 5.446 min
 Delta R.T.: 0.000 min
 Response: 6435522
 Conc: 16.29 ng/ml



#33 AR-1260-3

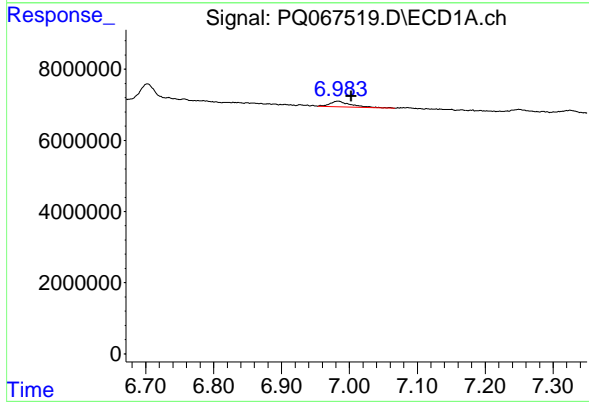
R.T.: 0.000 min
 Exp R.T. : 6.783 min
 Response: 0
 Conc: N.D.

Instrument :
 ECD_Q
 ClientSampleId :
 AR12483156



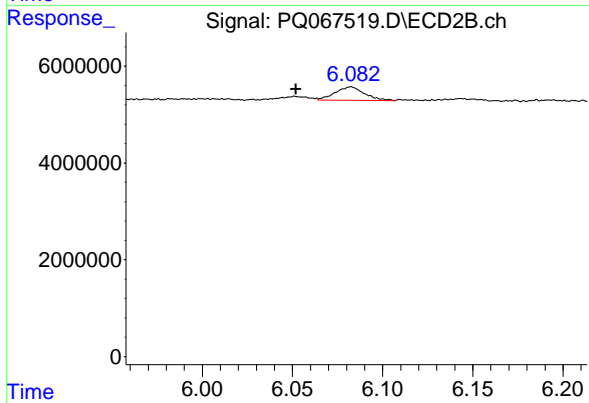
#33 AR-1260-3

R.T.: 5.584 min
 Delta R.T.: -0.006 min
 Response: 6627334
 Conc: 17.71 ng/ml



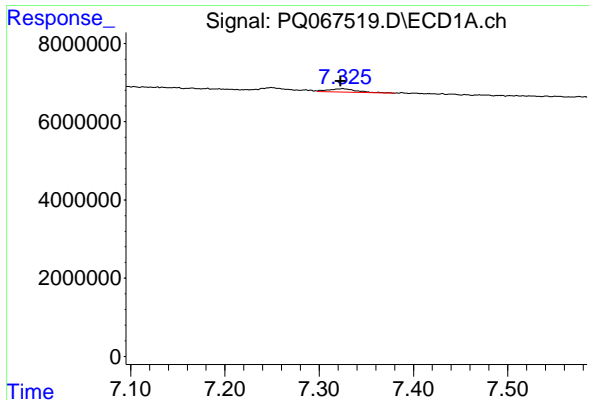
#34 AR-1260-4

R.T.: 6.983 min
 Delta R.T.: -0.019 min
 Response: 3473410
 Conc: 12.43 ng/ml



#34 AR-1260-4

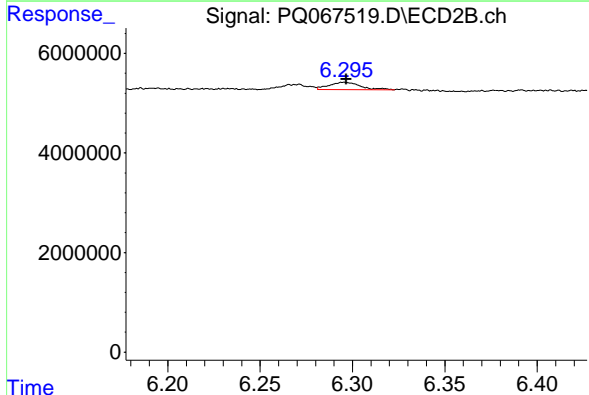
R.T.: 6.083 min
 Delta R.T.: 0.031 min
 Response: 3132376
 Conc: 10.07 ng/ml



#35 AR-1260-5

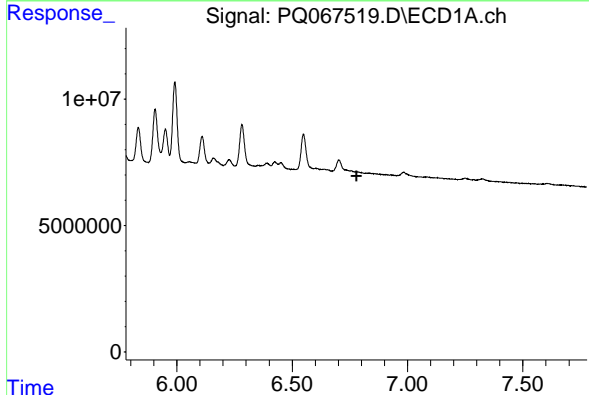
R.T.: 7.325 min
 Delta R.T.: 0.002 min
 Response: 1743944
 Conc: 3.26 ng/ml

Instrument :
 ECD_Q
 ClientSampleId :
 AR12483156



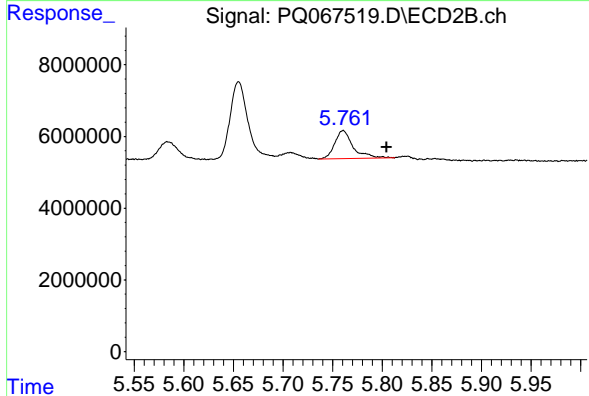
#35 AR-1260-5

R.T.: 6.295 min
 Delta R.T.: -0.001 min
 Response: 1751130
 Conc: 2.64 ng/ml



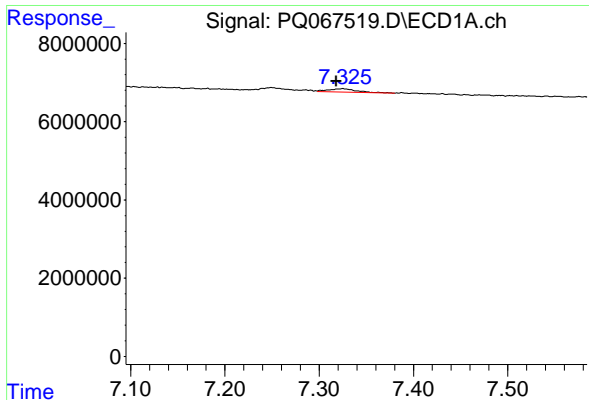
#36 AR-1262-1

R.T.: 0.000 min
 Exp R.T. : 6.779 min
 Response: 0
 Conc: N.D.



#36 AR-1262-1

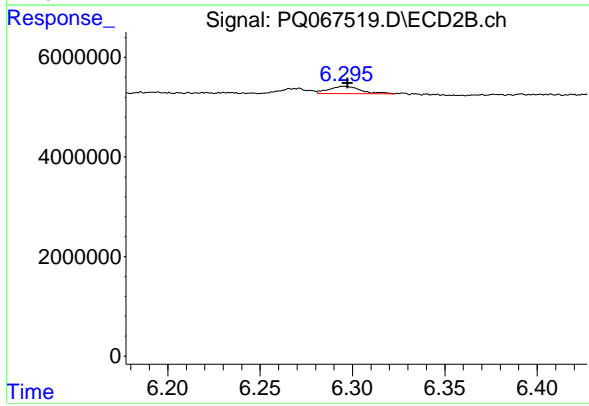
R.T.: 5.761 min
 Delta R.T.: -0.044 min
 Response: 10041444
 Conc: 24.06 ng/ml



#37 AR-1262-2

R.T.: 7.325 min
 Delta R.T.: 0.007 min
 Response: 1743944
 Conc: 3.40 ng/ml

Instrument :
 ECD_Q
 ClientSampleId :
 AR12483156



#37 AR-1262-2

R.T.: 6.295 min
 Delta R.T.: -0.002 min
 Response: 1751130
 Conc: 2.55 ng/ml