

Data Path : Z:\pestpcbsrv\HPCHEM1\ECD_Q\Data\PQ072924\
 Data File : PQ067531.D
 Signal(s) : Signal #1: ECD1A.ch Signal #2: ECD2B.ch
 Acq On : 29 Jul 2024 17:01
 Operator : YP\AJ
 Sample : P3359-03
 Misc :
 ALS Vial : 15 Sample Multiplier: 1

Instrument :
 ECD_Q
 ClientSampleId :
 E1G99

Integration File signal 1: autoint1.e
 Integration File signal 2: autoint2.e
 Quant Time: Jul 30 01:30:03 2024
 Quant Method : Z:\pestpcbsrv\HPCHEM1\ECD_Q\Method\PQ072324CLP.M
 Quant Title : GC EXTRACTABLES
 QLast Update : Wed Jul 24 04:31:32 2024
 Response via : Initial Calibration
 Integrator: ChemStation

Volume Inj. : 1 µl
 Signal #1 Phase : ZB MR1 Signal #2 Phase: ZB MR2
 Signal #1 Info : 30Mx0.32mmx 0.5µm Signal #2 Info : 30M x 0.32mm x 0.25µm

Compound	RT#1	RT#2	Resp#1	Resp#2	ng/ml	ng/ml

System Monitoring Compounds						
1) SA Tetrachlo...	3.461	2.829	119.9E6	126.4E6	16.708	19.349
2) SA Decachlor...	8.736	7.613	72934127	107.0E6	33.187	35.796
Target Compounds						
8) L2 AR-1221-1	0.000	3.099f	0	1852949	N.D.	23.702 #
9) L2 AR-1221-2	3.745	3.099	1855418	1852949	34.392	35.624
10) L2 AR-1221-3	3.745f	0.000	1855418	0	10.549	N.D. #
11) L3 AR-1232-1	3.745f	0.000	1855418	0	15.686	N.D. #
12) L3 AR-1232-2	4.300	0.000	1059493	0	15.869	N.D. #

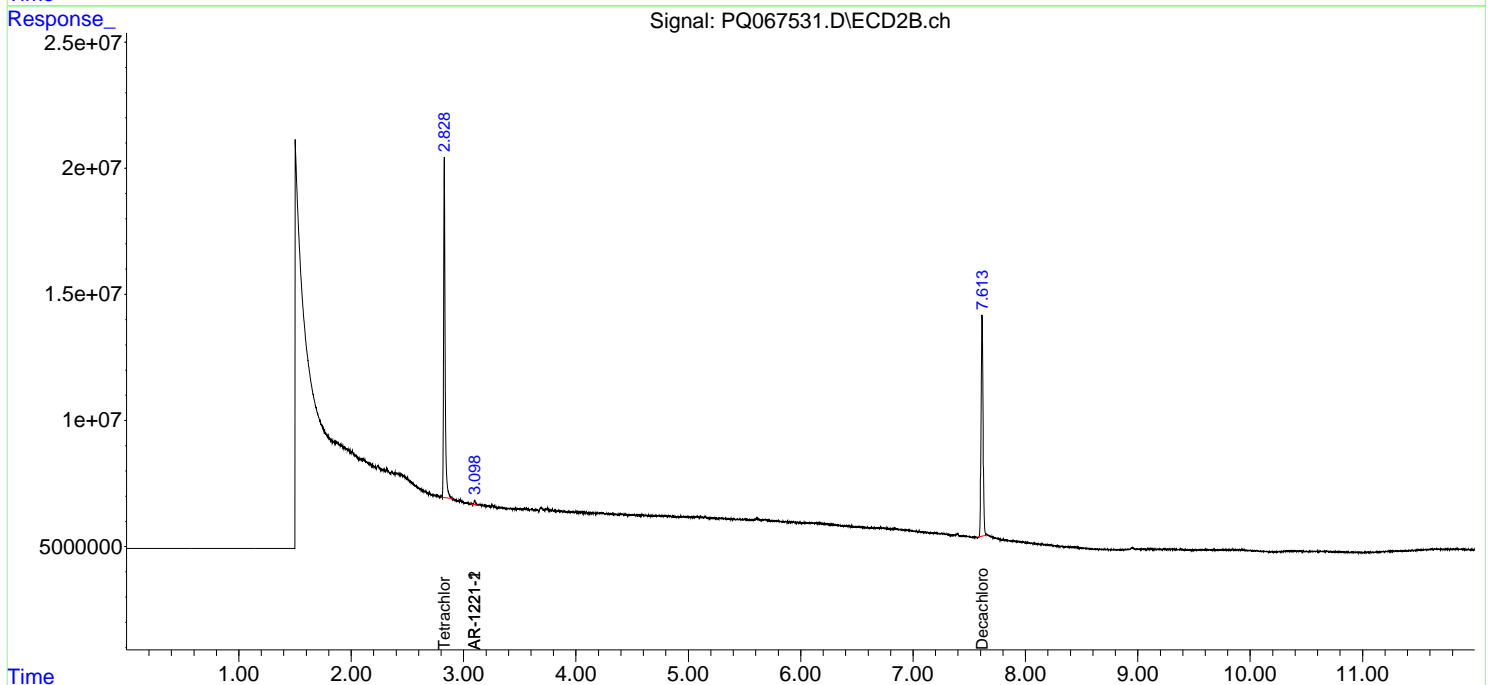
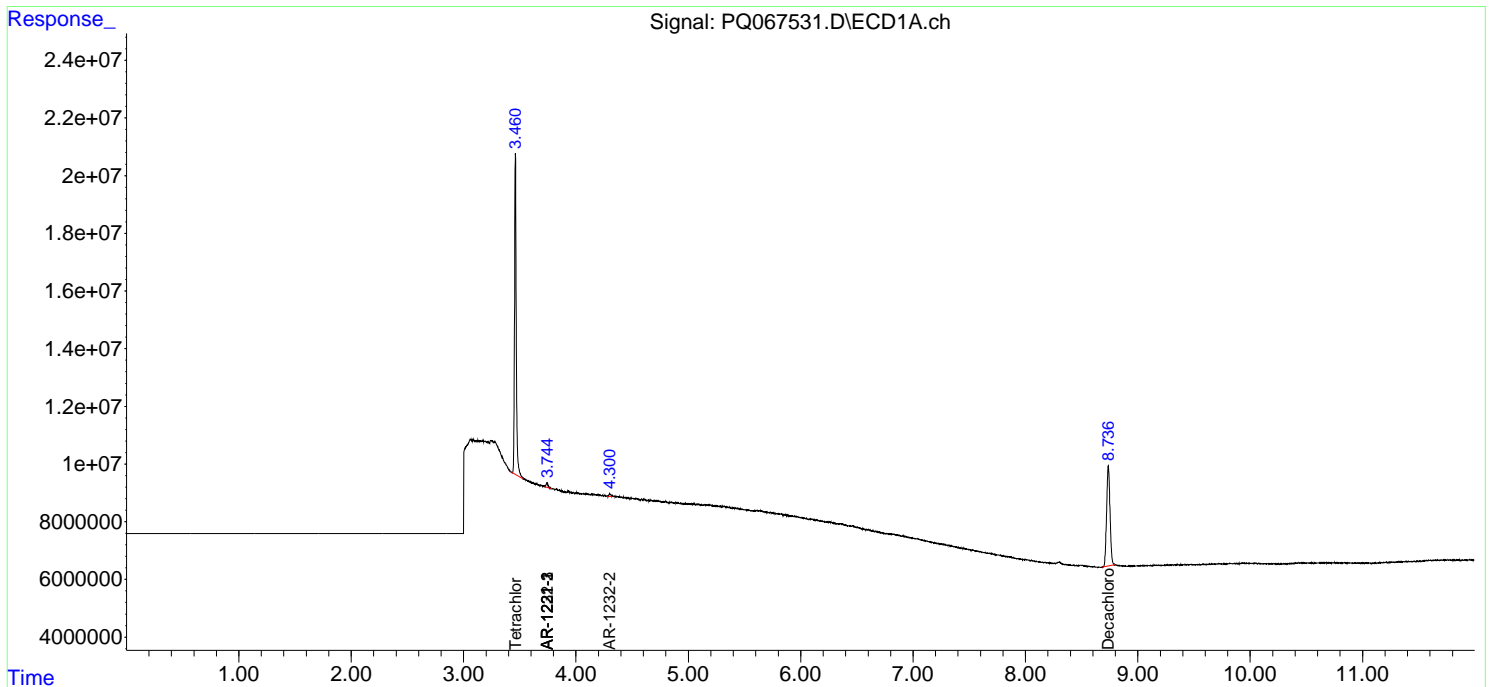
(f)=RT Delta > 1/2 Window (#)=Amounts differ by > 25% (m)=manual int.

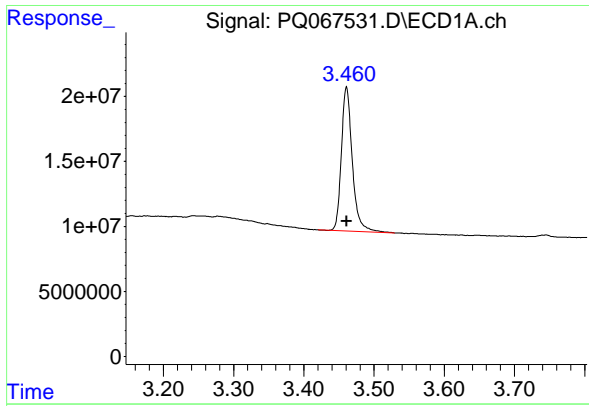
Data Path : Z:\pestpcbsrv\HPCHEM1\ECD_Q\Data\PQ072924\
 Data File : PQ067531.D
 Signal(s) : Signal #1: ECD1A.ch Signal #2: ECD2B.ch
 Acq On : 29 Jul 2024 17:01
 Operator : YP\AJ
 Sample : P3359-03
 Misc :
 ALS Vial : 15 Sample Multiplier: 1

Instrument :
 ECD_Q
 ClientSampleId :
 E1G99

Integration File signal 1: autoint1.e
 Integration File signal 2: autoint2.e
 Quant Time: Jul 30 01:30:03 2024
 Quant Method : Z:\pestpcbsrv\HPCHEM1\ECD_Q\Method\PQ072324CLP.M
 Quant Title : GC EXTRACTABLES
 QLast Update : Wed Jul 24 04:31:32 2024
 Response via : Initial Calibration
 Integrator: ChemStation

Volume Inj. : 1 µl
 Signal #1 Phase : ZB MR1 Signal #2 Phase: ZB MR2
 Signal #1 Info : 30Mx0.32mmx 0.5µm Signal #2 Info : 30M x 0.32mm x 0.25µm

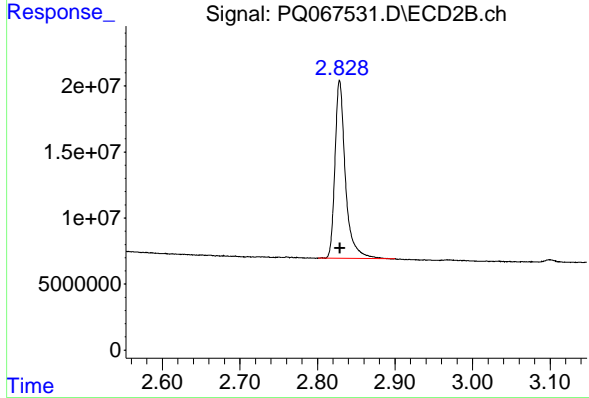




#1 Tetrachloro-m-xylene

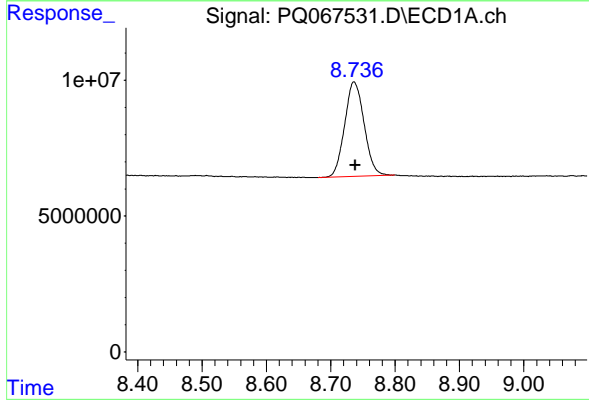
R.T.: 3.461 min
 Delta R.T.: 0.000 min
 Response: 119929518
 Conc: 16.71 ng/ml

Instrument :
 ECD_Q
 ClientSampleId :
 E1G99



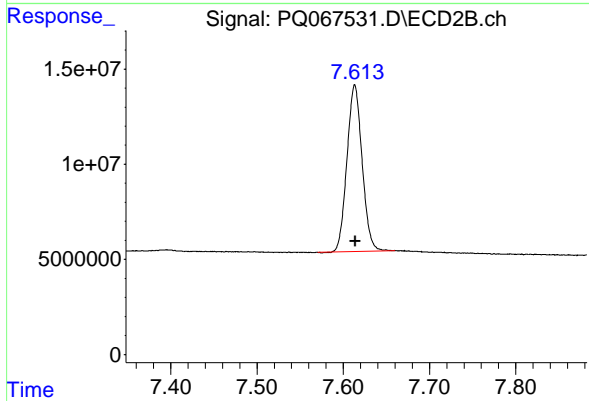
#1 Tetrachloro-m-xylene

R.T.: 2.829 min
 Delta R.T.: 0.000 min
 Response: 126375873
 Conc: 19.35 ng/ml



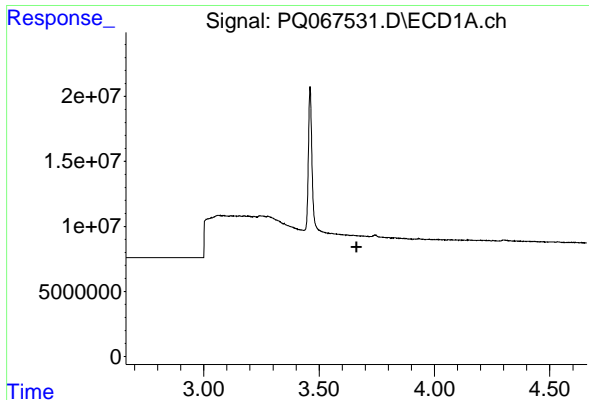
#2 Decachlorobiphenyl

R.T.: 8.736 min
 Delta R.T.: -0.002 min
 Response: 72934127
 Conc: 33.19 ng/ml



#2 Decachlorobiphenyl

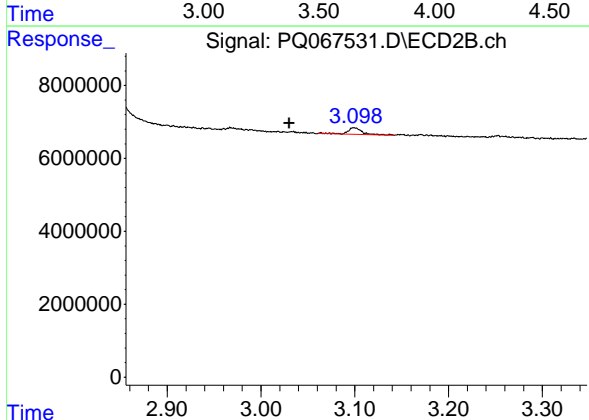
R.T.: 7.613 min
 Delta R.T.: 0.000 min
 Response: 106975575
 Conc: 35.80 ng/ml



#8 AR-1221-1

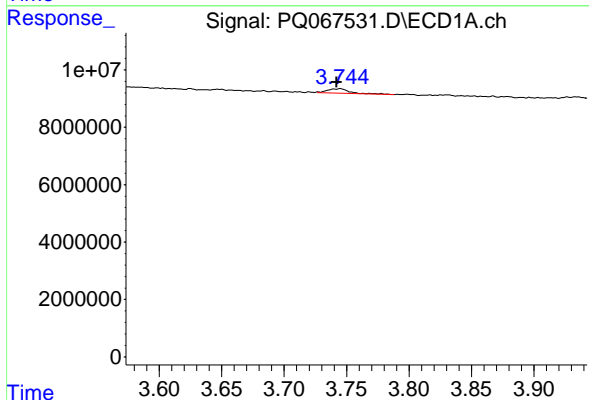
R.T.: 0.000 min
 Exp R.T.: 3.662 min
 Response: 0
 Conc: N.D.

Instrument : ECD_Q
 ClientSampleId : E1G99



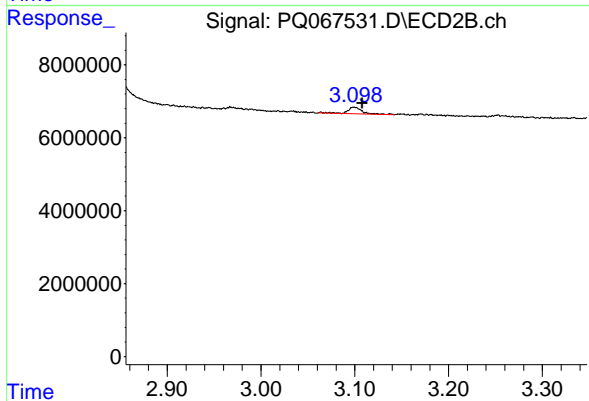
#8 AR-1221-1

R.T.: 3.099 min
 Delta R.T.: 0.069 min
 Response: 1852949
 Conc: 23.70 ng/ml



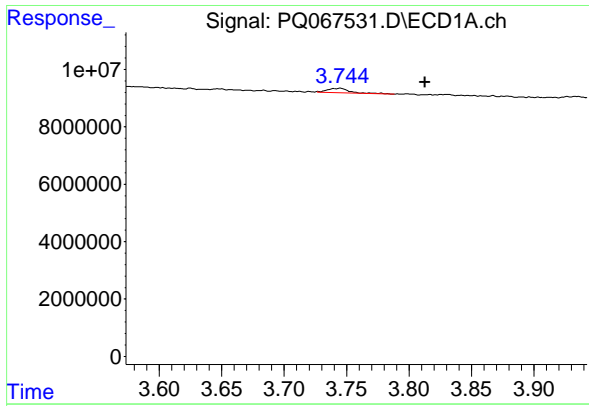
#9 AR-1221-2

R.T.: 3.745 min
 Delta R.T.: 0.003 min
 Response: 1855418
 Conc: 34.39 ng/ml



#9 AR-1221-2

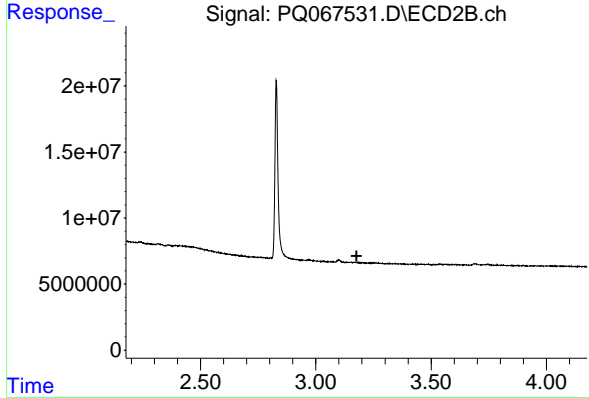
R.T.: 3.099 min
 Delta R.T.: -0.009 min
 Response: 1852949
 Conc: 35.62 ng/ml



#10 AR-1221-3

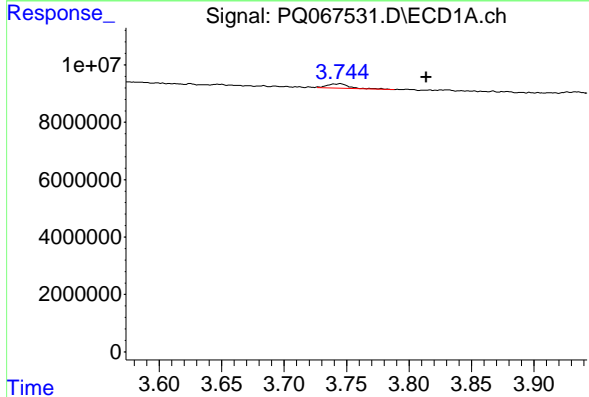
R.T.: 3.745 min
Delta R.T.: -0.068 min
Response: 1855418
Conc: 10.55 ng/ml

Instrument :
ECD_Q
ClientSampleId :
E1G99



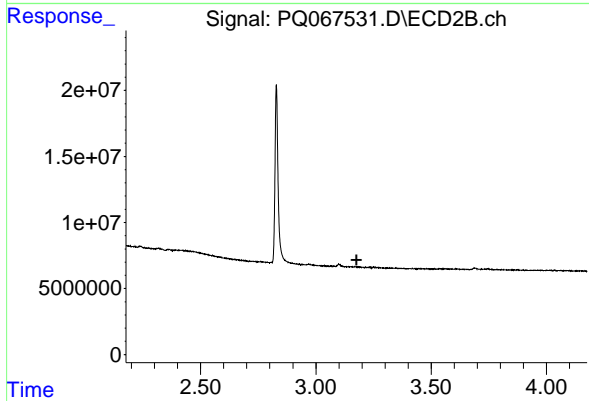
#10 AR-1221-3

R.T.: 0.000 min
Exp R.T. : 3.177 min
Response: 0
Conc: N.D.



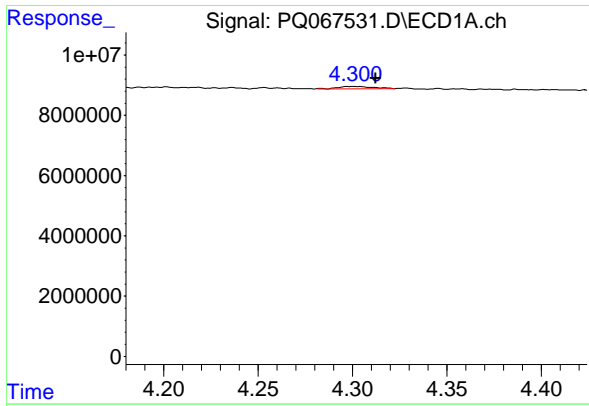
#11 AR-1232-1

R.T.: 3.745 min
Delta R.T.: -0.069 min
Response: 1855418
Conc: 15.69 ng/ml



#11 AR-1232-1

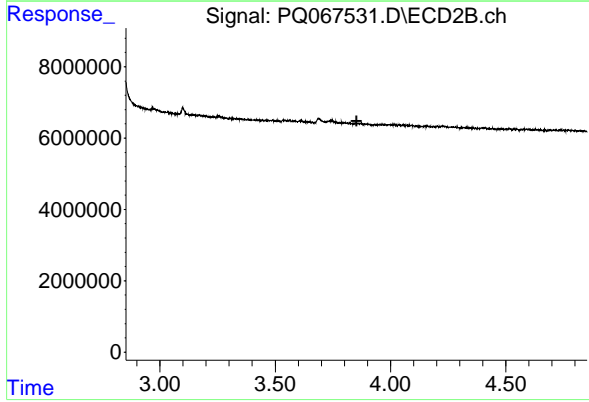
R.T.: 0.000 min
Exp R.T. : 3.176 min
Response: 0
Conc: N.D.



#12 AR-1232-2

R.T.: 4.300 min
Delta R.T.: -0.012 min
Response: 1059493
Conc: 15.87 ng/ml

Instrument :
ECD_Q
ClientSampleId :
E1G99



#12 AR-1232-2

R.T.: 0.000 min
Exp R.T. : 3.853 min
Response: 0
Conc: N.D.