

Data Path : Z:\pestpcbsrv\HPCHEM1\ECD_Q\Data\PQ073021\
 Data File : PQ054199.D
 Signal(s) : Signal #1: ECD1A.ch Signal #2: ECD2B.ch
 Acq On : 30 Jul 2021 11:53
 Operator : AJ\MA
 Sample : M2940-07
 Misc : AR1232 MDL 25 PPB
 ALS Vial : 59 Sample Multiplier: 1

Instrument :
 ECD_Q
Client Sampled :
 LOD-MDL-WATER-01-QT3-2021

Manual Integrations
APPROVED
 mohammad
 8/2/2021 12:58:05 PM

Integration File signal 1: autoint1.e
 Integration File signal 2: autoint2.e
 Quant Time: Aug 02 02:04:34 2021
 Quant Method : Z:\pestpcbsrv\HPCHEM1\ECD_Q\Method\PQ072921.M
 Quant Title : GC EXTRACTABLES
 QLast Update : Fri Jul 30 02:37:02 2021
 Response via : Initial Calibration
 Integrator: ChemStation

Volume Inj. : 2 µl
 Signal #1 Phase : ZB-MR2 Signal #2 Phase: ZB-MR2
 Signal #1 Info : 30Mx0.32mmx 0.50µ Signal #2 Info : 30M x 0.32mm x 0.25µm

Compound	RT#1	RT#2	Resp#1	Resp#2	ng/ml	ng/ml

System Monitoring Compounds						
1) SA Tetrachlo...	5.204	4.208	434.9E6	240.6E6	18.623	17.017
2) SA Decachlor...	11.378	9.547	364.3E6	290.3E6	21.651	23.011
Target Compounds						
11) L3 AR-1232-1	5.644	4.656	11257007	5753848	28.815	24.651
12) L3 AR-1232-2	6.232	5.493	7040133	7602836	30.306m	26.251m
13) L3 AR-1232-3	6.557	5.684	10273598	3558476	23.942m	26.821m
14) L3 AR-1232-4	6.732	5.780	6038749	3144361	27.882	27.556
15) L3 AR-1232-5	6.821	5.967	4810067	3597489	29.598	27.993m

(f)=RT Delta > 1/2 Window (#)=Amounts differ by > 25% (m)=manual int.

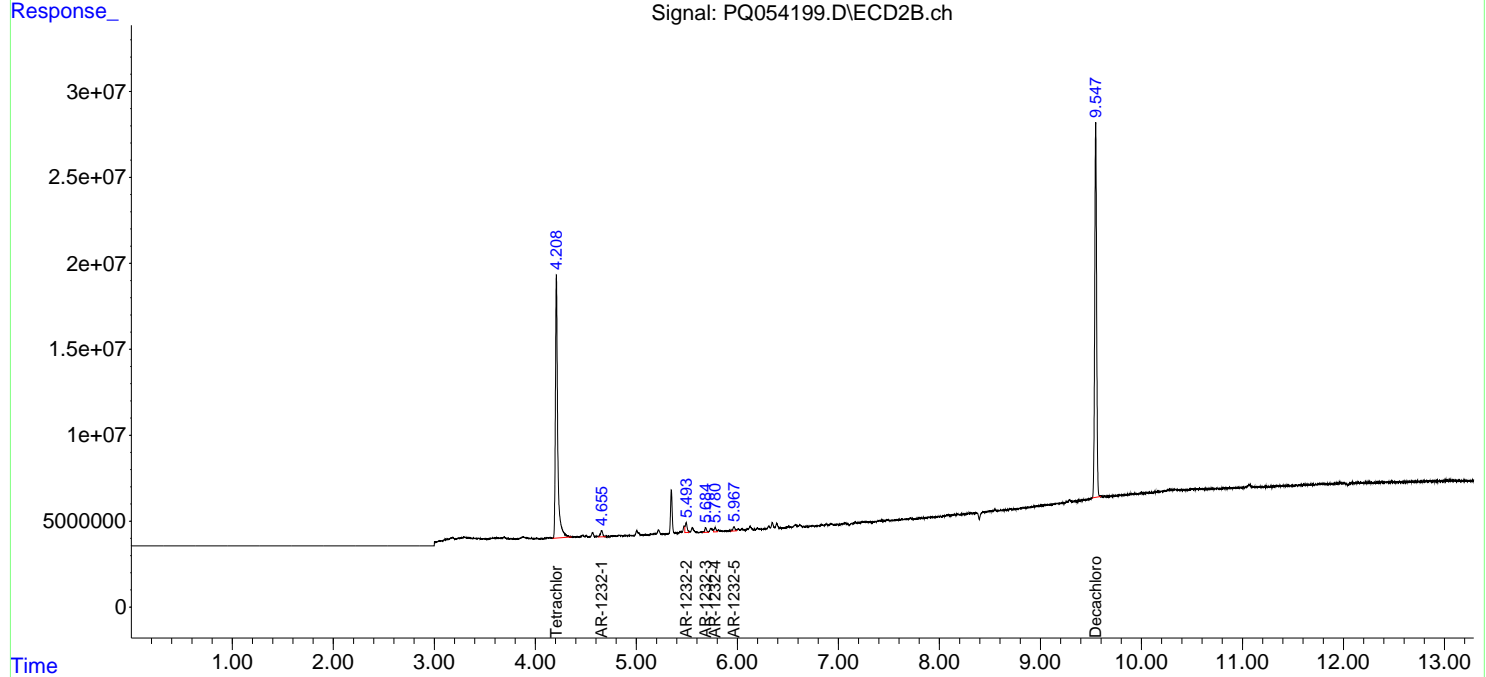
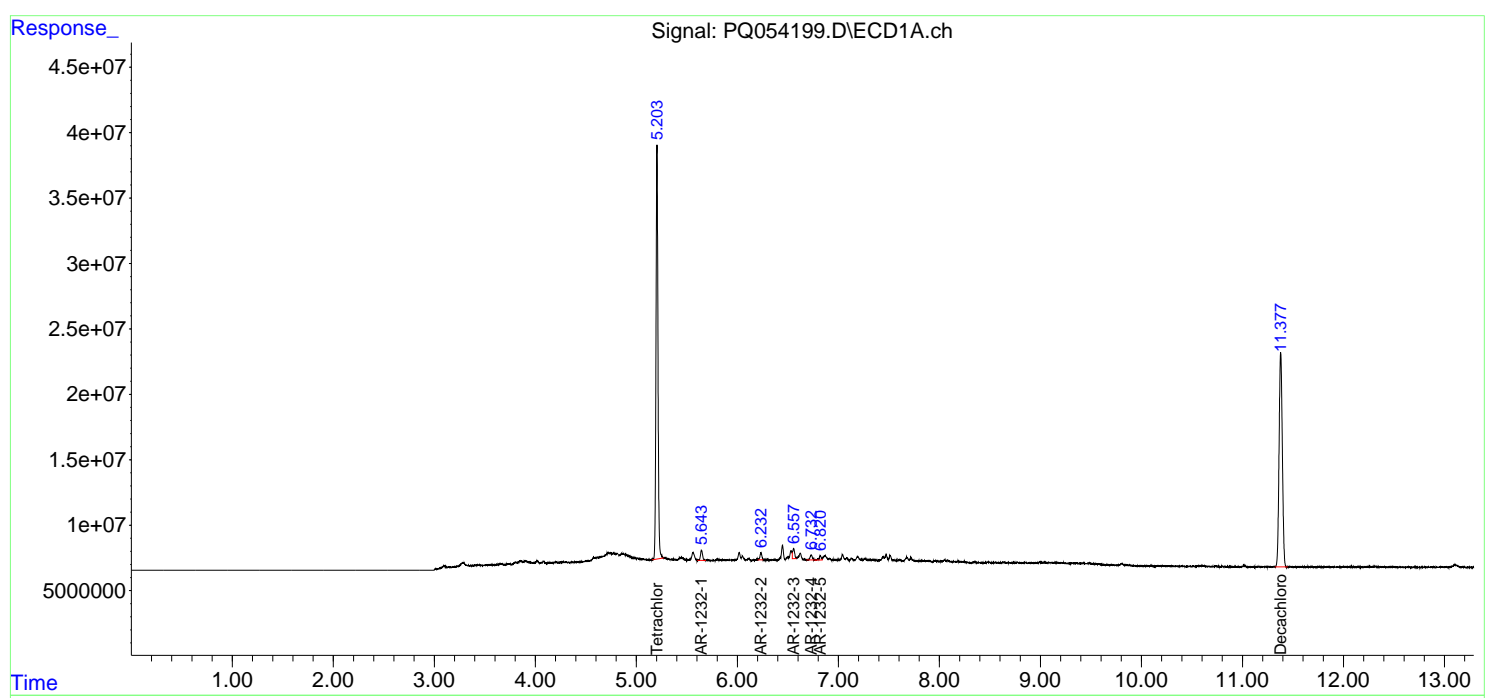
Data Path : Z:\pestpcbsrv\HPCHEM1\ECD_Q\Data\PQ073021\
 Data File : PQ054199.D
 Signal(s) : Signal #1: ECD1A.ch Signal #2: ECD2B.ch
 Acq On : 30 Jul 2021 11:53
 Operator : AJ\MA
 Sample : M2940-07
 Misc : AR1232 MDL 25 PPB
 ALS Vial : 59 Sample Multiplier: 1

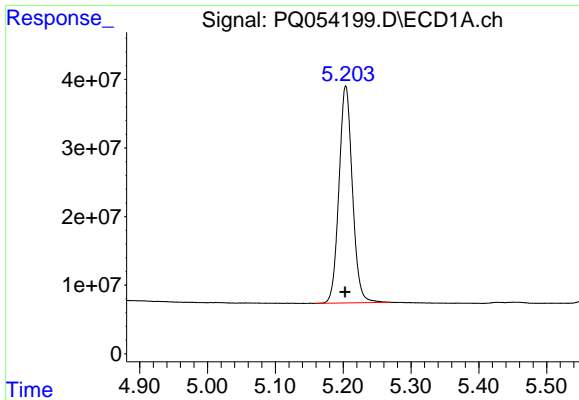
Instrument :
 ECD_Q
Client Sampled :
 LOD-MDL-WATER-01-QT3-2021

Manual Integrations
APPROVED
 mohammad
 8/2/2021 12:58:05 PM

Integration File signal 1: autoint1.e
 Integration File signal 2: autoint2.e
 Quant Time: Aug 02 02:04:34 2021
 Quant Method : Z:\pestpcbsrv\HPCHEM1\ECD_Q\Method\PQ072921.M
 Quant Title : GC EXTRACTABLES
 QLast Update : Fri Jul 30 02:37:02 2021
 Response via : Initial Calibration
 Integrator: ChemStation

Volume Inj. : 2 µl
 Signal #1 Phase : ZB-MR1 Signal #2 Phase: ZB-MR2
 Signal #1 Info : 30Mx0.32mmx 0.50µ Signal #2 Info : 30M x 0.32mm x 0.25µm



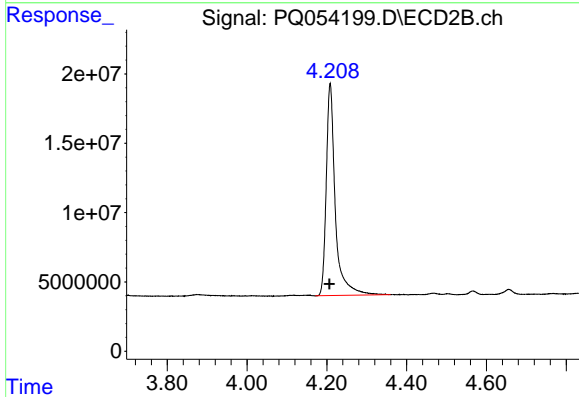


#1 Tetrachloro-m-xylene

R.T.: 5.204 min
 Delta R.T.: 0.000 min
 Response: 434890514
 Conc: 18.62 ng/ml

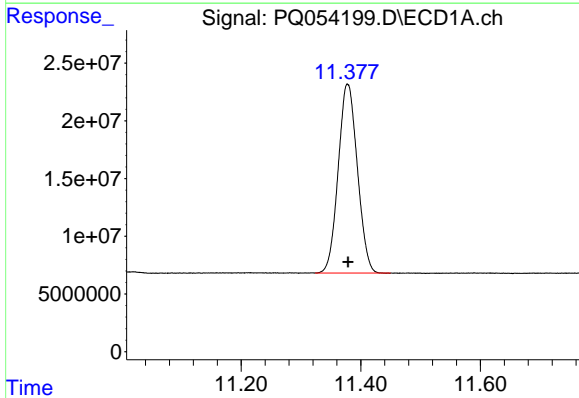
Instrument :
 ECD_Q
 ClientSampleId :
 LOD-MDL-WATER-01-QT3-2021

Manual Integrations
 APPROVED
 mohammad
 8/2/2021 12:58:05 PM



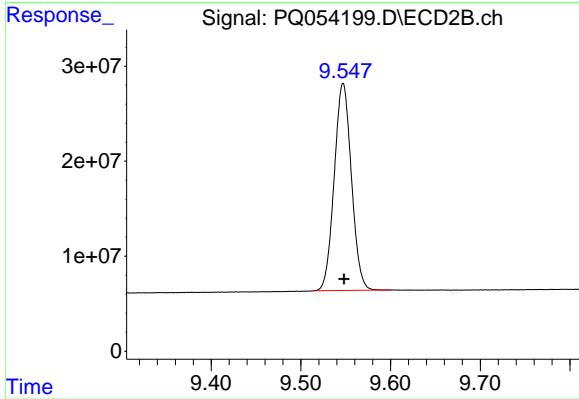
#1 Tetrachloro-m-xylene

R.T.: 4.208 min
 Delta R.T.: 0.002 min
 Response: 240569809
 Conc: 17.02 ng/ml



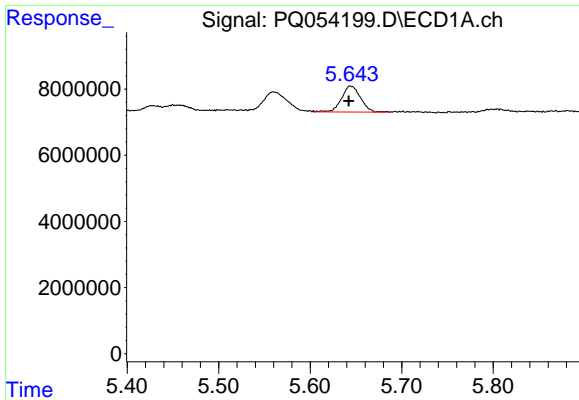
#2 Decachlorobiphenyl

R.T.: 11.378 min
 Delta R.T.: 0.000 min
 Response: 364302238
 Conc: 21.65 ng/ml



#2 Decachlorobiphenyl

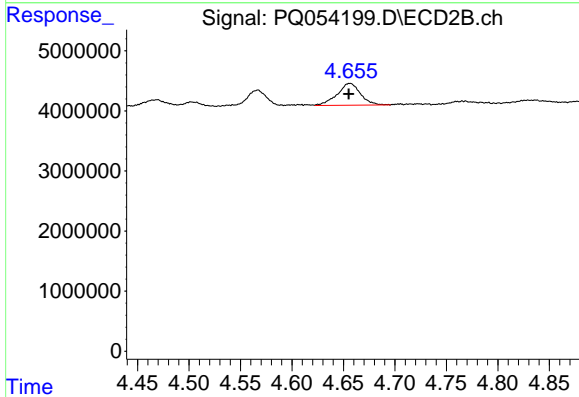
R.T.: 9.547 min
 Delta R.T.: -0.001 min
 Response: 290261057
 Conc: 23.01 ng/ml



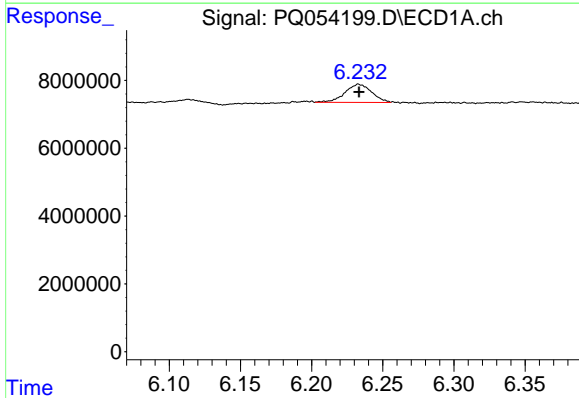
#11 AR-1232-1
 R.T.: 5.644 min
 Delta R.T.: 0.002 min
 Response: 11257007
 Conc: 28.82 ng/ml

Instrument :
 ECD_Q
ClientSampled :
 LOD-MDL-WATER-01-QT3-2021

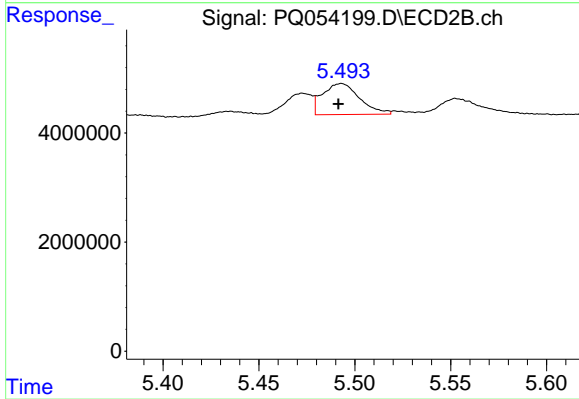
Manual Integrations
APPROVED
 mohammad
 8/2/2021 12:58:05 PM



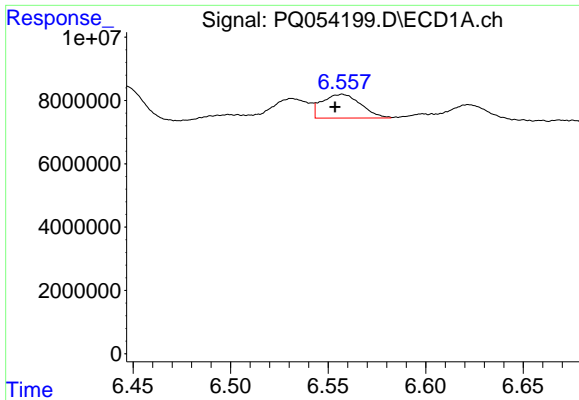
#11 AR-1232-1
 R.T.: 4.656 min
 Delta R.T.: 0.001 min
 Response: 5753848
 Conc: 24.65 ng/ml



#12 AR-1232-2
 R.T.: 6.232 min
 Delta R.T.: 0.000 min
 Response: 7040133
 Conc: 30.31 ng/ml m



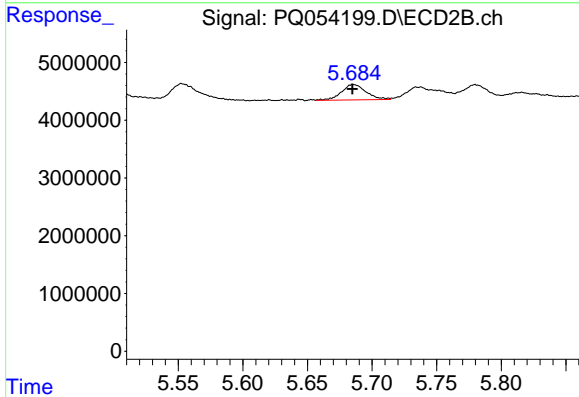
#12 AR-1232-2
 R.T.: 5.493 min
 Delta R.T.: 0.001 min
 Response: 7602836
 Conc: 26.25 ng/ml m



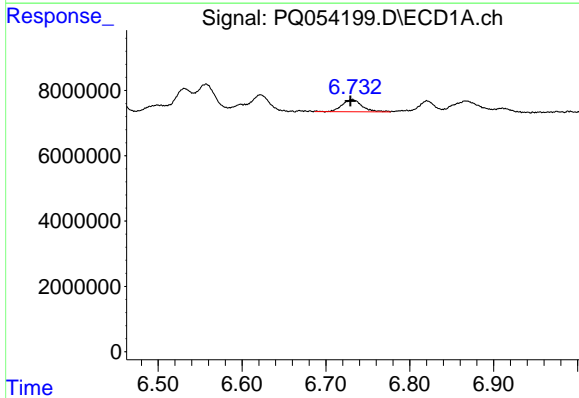
#13 AR-1232-3
 R.T.: 6.557 min
 Delta R.T.: 0.003 min
 Response: 10273598
 Conc: 23.94 ng/ml m

Instrument :
 ECD_Q
ClientSampled :
 LOD-MDL-WATER-01-QT3-2021

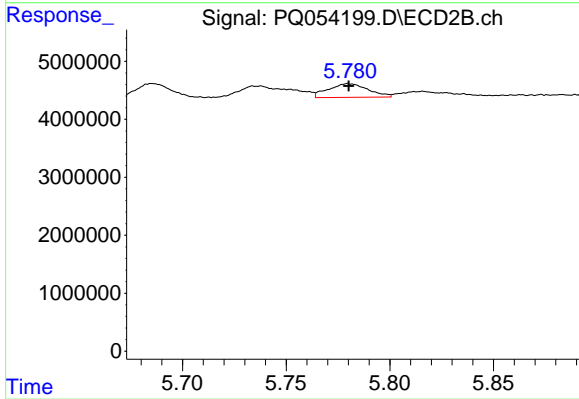
Manual Integrations
APPROVED
 mohammad
 8/2/2021 12:58:05 PM



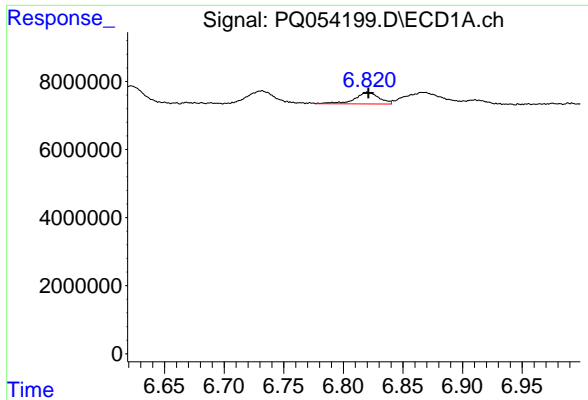
#13 AR-1232-3
 R.T.: 5.684 min
 Delta R.T.: 0.000 min
 Response: 3558476
 Conc: 26.82 ng/ml m



#14 AR-1232-4
 R.T.: 6.732 min
 Delta R.T.: 0.002 min
 Response: 6038749
 Conc: 27.88 ng/ml



#14 AR-1232-4
 R.T.: 5.780 min
 Delta R.T.: 0.000 min
 Response: 3144361
 Conc: 27.56 ng/ml



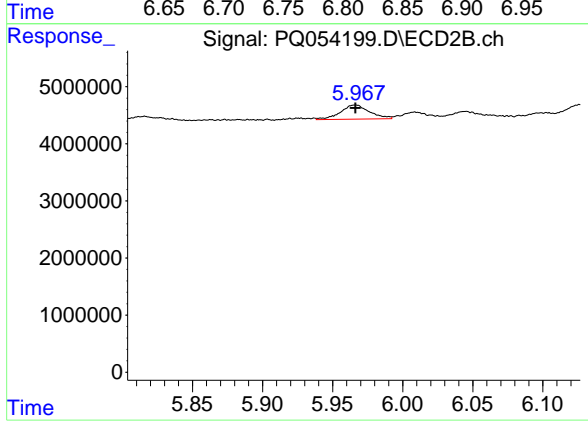
#15 AR-1232-5

R.T.: 6.821 min
Delta R.T.: 0.000 min
Response: 4810067
Conc: 29.60 ng/ml

Instrument :
ECD_Q
ClientSampleId :
LOD-MDL-WATER-01-QT3-2021

Manual Integrations
APPROVED

mohammad
8/2/2021 12:58:05 PM



#15 AR-1232-5

R.T.: 5.967 min
Delta R.T.: 0.000 min
Response: 3597489
Conc: 27.99 ng/ml m