

Data Path : Z:\pestpcbsrv\HPCHEM1\ECD_Q\Data\PQ073021\
 Data File : PQ054201.D
 Signal(s) : Signal #1: ECD1A.ch Signal #2: ECD2B.ch
 Acq On : 30 Jul 2021 12:26
 Operator : AJ\MA
 Sample : M2940-07
 Misc : AR1248 MDL 25 PPB
 ALS Vial : 61 Sample Multiplier: 1

Instrument :
 ECD_Q
Client Sampled :
 LOD-MDL-WATER-01-QT3-2021

Manual Integrations
APPROVED
 mohammad
 8/2/2021 12:58:13 PM

Integration File signal 1: autoint1.e
 Integration File signal 2: autoint2.e
 Quant Time: Aug 02 02:06:13 2021
 Quant Method : Z:\pestpcbsrv\HPCHEM1\ECD_Q\Method\PQ072921.M
 Quant Title : GC EXTRACTABLES
 QLast Update : Fri Jul 30 02:37:02 2021
 Response via : Initial Calibration
 Integrator: ChemStation

Volume Inj. : 2 µl
 Signal #1 Phase : ZB-MR2 Signal #2 Phase: ZB-MR2
 Signal #1 Info : 30Mx0.32mmx 0.50µ Signal #2 Info : 30M x 0.32mm x 0.25µm

Compound	RT#1	RT#2	Resp#1	Resp#2	ng/ml	ng/ml

System Monitoring Compounds						
1) SA Tetrachlo...	5.204	4.208	456.7E6	254.0E6	19.559	17.964
2) SA Decachlor...	11.378	9.548	365.5E6	296.5E6	21.725	23.503
Target Compounds						
21) L5 AR-1248-1	6.532	5.473	9001968	5731634	24.266m	25.404m
22) L5 AR-1248-2	6.822	5.735	13834514	10033242	26.412m	30.570
23) L5 AR-1248-3	7.042	5.780	18309604	9487381	30.852	28.689
24) L5 AR-1248-4	7.472	5.965	20097655	11792591	30.255	29.713
25) L5 AR-1248-5	7.513	6.390	19798778	11073707	30.408	27.784m

(f)=RT Delta > 1/2 Window (#)=Amounts differ by > 25% (m)=manual int.

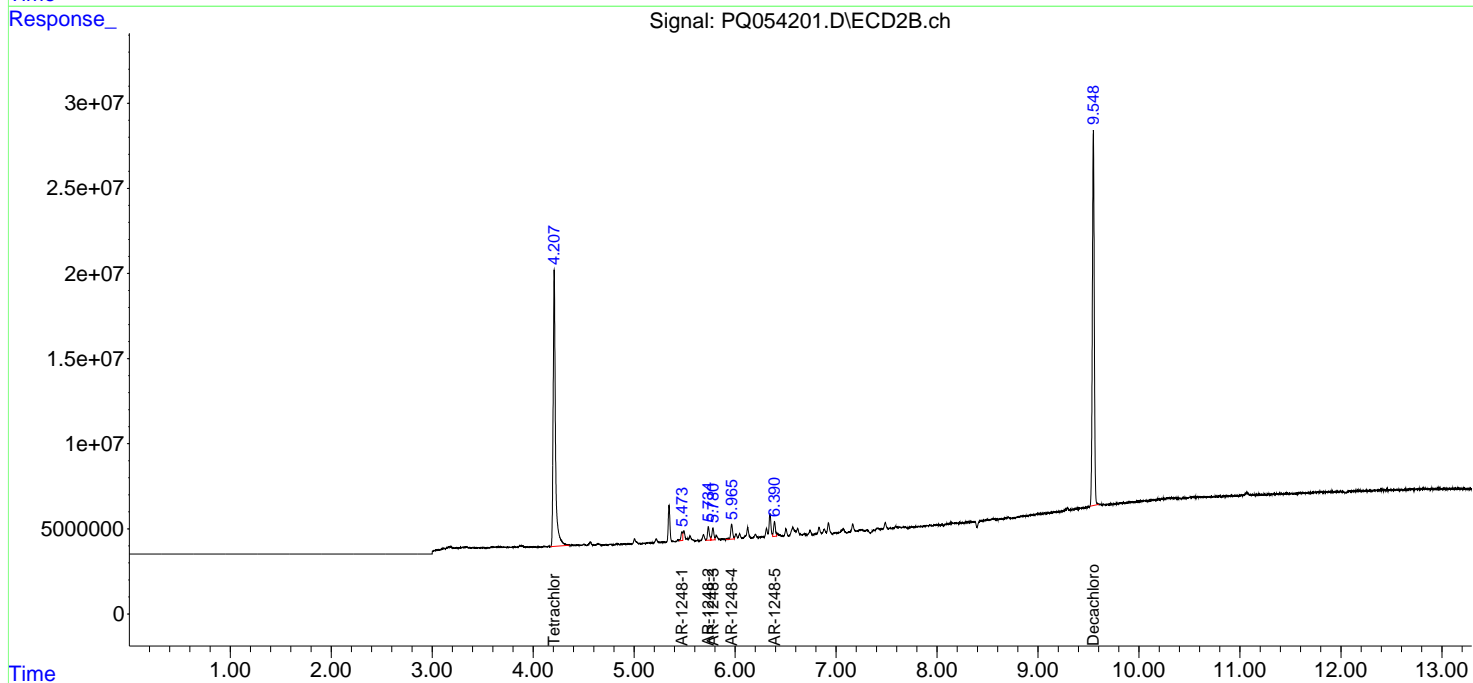
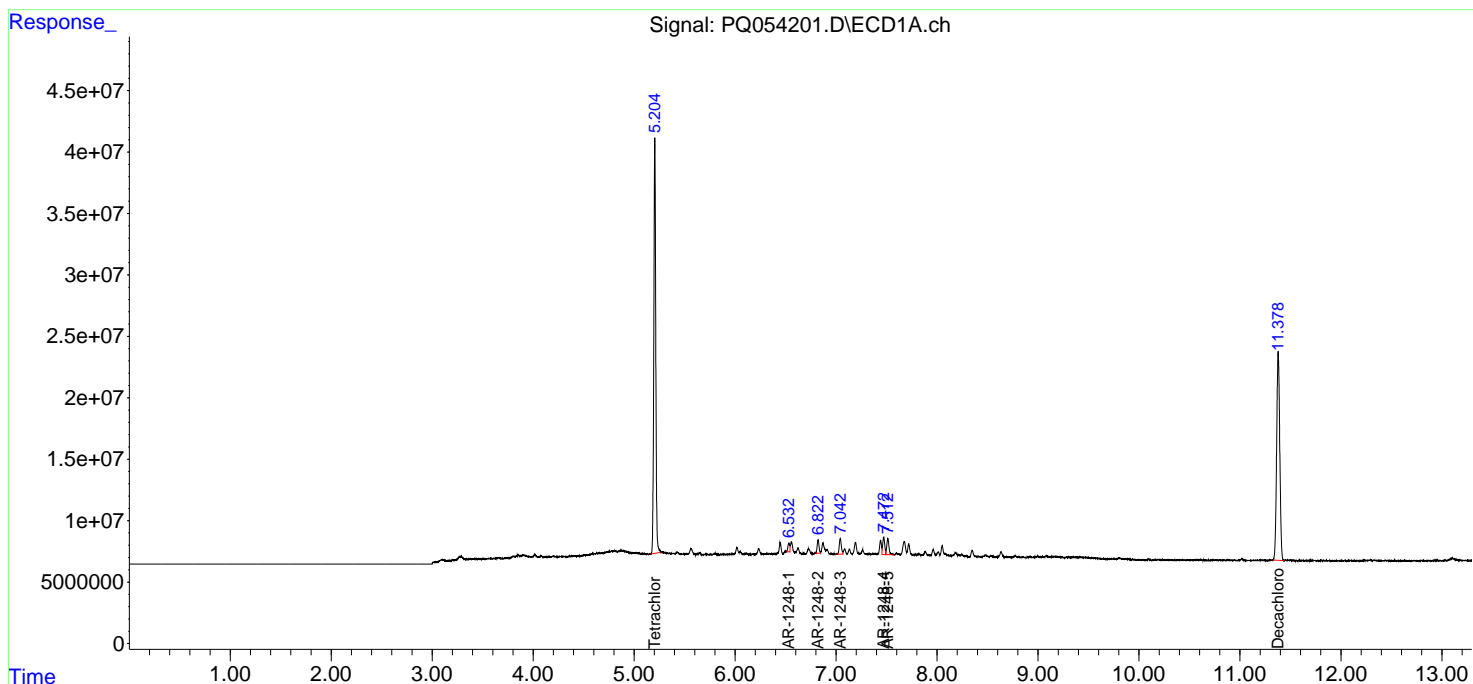
Data Path : Z:\pestpcbsrv\HPCHEM1\ECD_Q\Data\PQ073021\
 Data File : PQ054201.D
 Signal(s) : Signal #1: ECD1A.ch Signal #2: ECD2B.ch
 Acq On : 30 Jul 2021 12:26
 Operator : AJ\MA
 Sample : M2940-07
 Misc : AR1248 MDL 25 PPB
 ALS Vial : 61 Sample Multiplier: 1

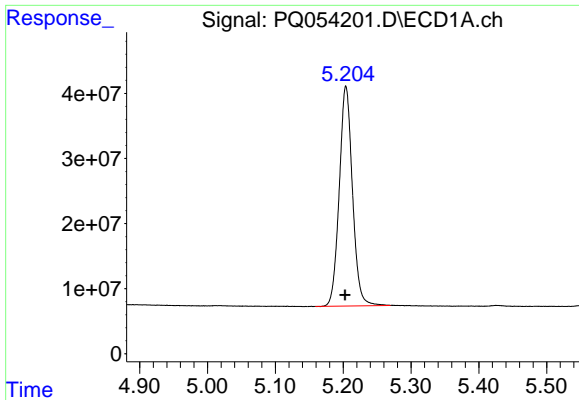
Instrument :
 ECD_Q
Client Sampled :
 LOD-MDL-WATER-01-QT3-2021

Manual Integrations
APPROVED
 mohammad
 8/2/2021 12:58:13 PM

Integration File signal 1: autoint1.e
 Integration File signal 2: autoint2.e
 Quant Time: Aug 02 02:06:13 2021
 Quant Method : Z:\pestpcbsrv\HPCHEM1\ECD_Q\Method\PQ072921.M
 Quant Title : GC EXTRACTABLES
 QLast Update : Fri Jul 30 02:37:02 2021
 Response via : Initial Calibration
 Integrator: ChemStation

Volume Inj. : 2 µl
 Signal #1 Phase : ZB-MR1 Signal #2 Phase: ZB-MR2
 Signal #1 Info : 30Mx0.32mmx 0.50µm Signal #2 Info : 30M x 0.32mm x 0.25µm

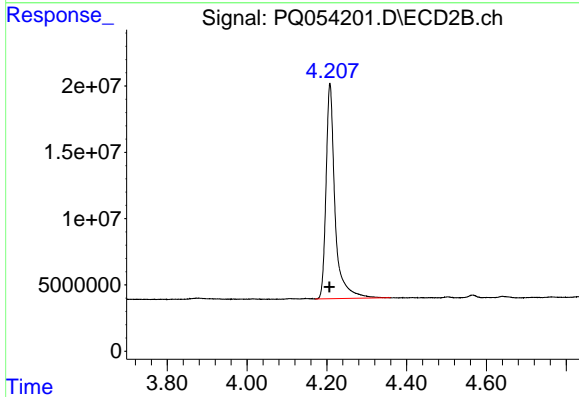




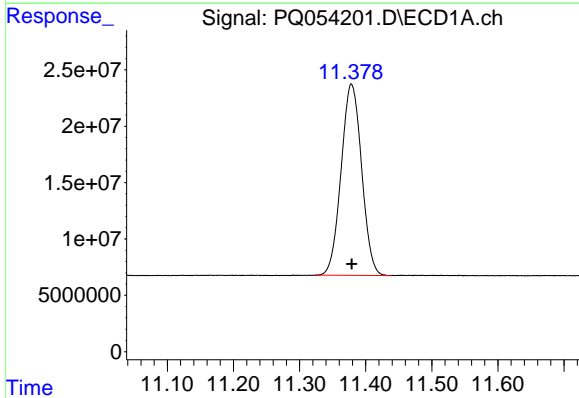
#1 Tetrachloro-m-xylene
 R.T.: 5.204 min
 Delta R.T.: 0.001 min
 Response: 456740187
 Conc: 19.56 ng/ml

Instrument :
 ECD_Q
ClientSampleId :
 LOD-MDL-WATER-01-QT3-2021

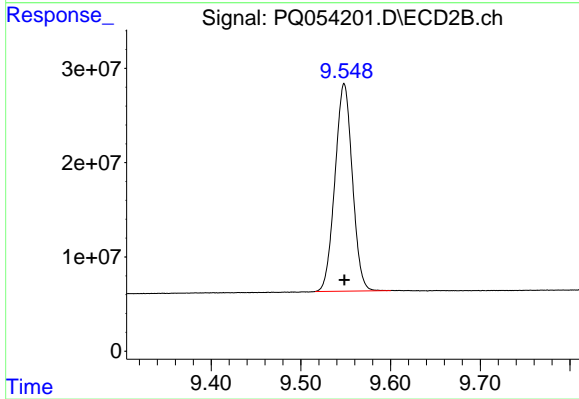
Manual Integrations
APPROVED
 mohammad
 8/2/2021 12:58:13 PM



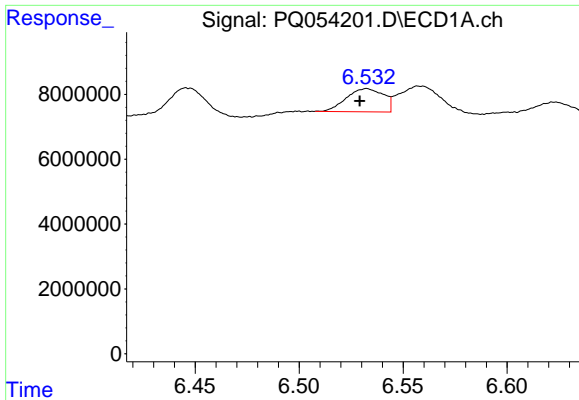
#1 Tetrachloro-m-xylene
 R.T.: 4.208 min
 Delta R.T.: 0.002 min
 Response: 253954601
 Conc: 17.96 ng/ml



#2 Decachlorobiphenyl
 R.T.: 11.378 min
 Delta R.T.: 0.000 min
 Response: 365547188
 Conc: 21.73 ng/ml



#2 Decachlorobiphenyl
 R.T.: 9.548 min
 Delta R.T.: 0.000 min
 Response: 296461694
 Conc: 23.50 ng/ml

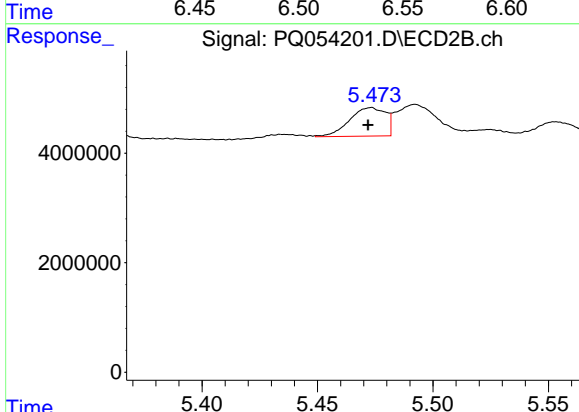


#21 AR-1248-1

R.T.: 6.532 min
 Delta R.T.: 0.003 min
 Response: 9001968
 Conc: 24.27 ng/ml m

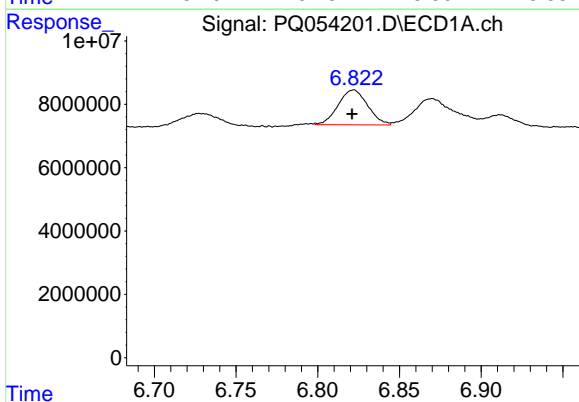
Instrument :
 ECD_Q
ClientSampled :
 LOD-MDL-WATER-01-QT3-2021

Manual Integrations
APPROVED
 mohammad
 8/2/2021 12:58:13 PM



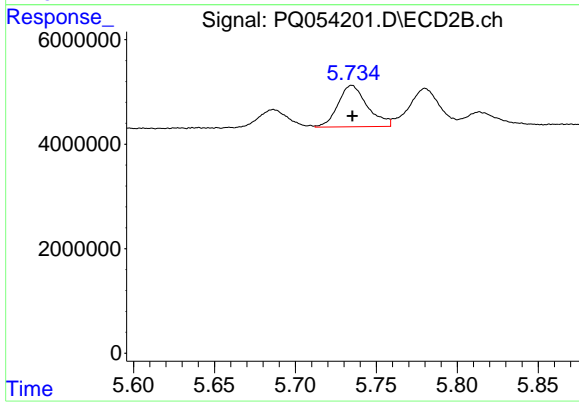
#21 AR-1248-1

R.T.: 5.473 min
 Delta R.T.: 0.002 min
 Response: 5731634
 Conc: 25.40 ng/ml m



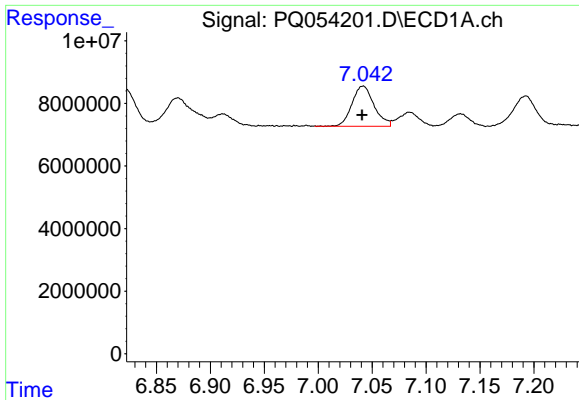
#22 AR-1248-2

R.T.: 6.822 min
 Delta R.T.: 0.000 min
 Response: 13834514
 Conc: 26.41 ng/ml m



#22 AR-1248-2

R.T.: 5.735 min
 Delta R.T.: 0.000 min
 Response: 10033242
 Conc: 30.57 ng/ml

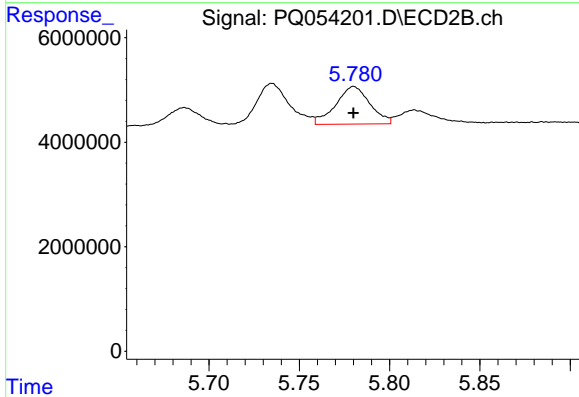


#23 AR-1248-3

R.T.: 7.042 min
 Delta R.T.: 0.000 min
 Response: 18309604
 Conc: 30.85 ng/ml

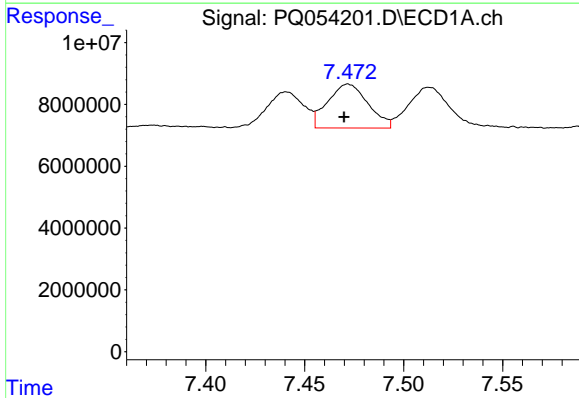
Instrument :
 ECD_Q
ClientSampled :
 LOD-MDL-WATER-01-QT3-2021

Manual Integrations
APPROVED
 mohammad
 8/2/2021 12:58:13 PM



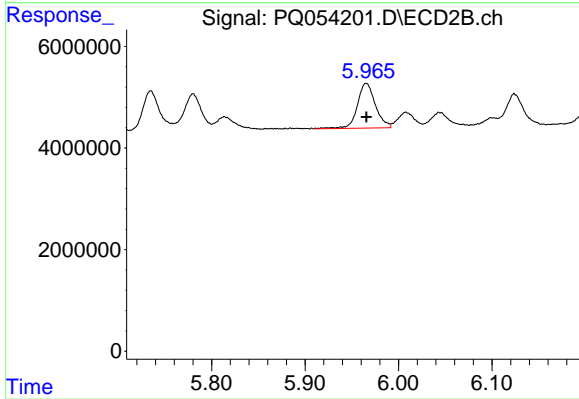
#23 AR-1248-3

R.T.: 5.780 min
 Delta R.T.: 0.000 min
 Response: 9487381
 Conc: 28.69 ng/ml



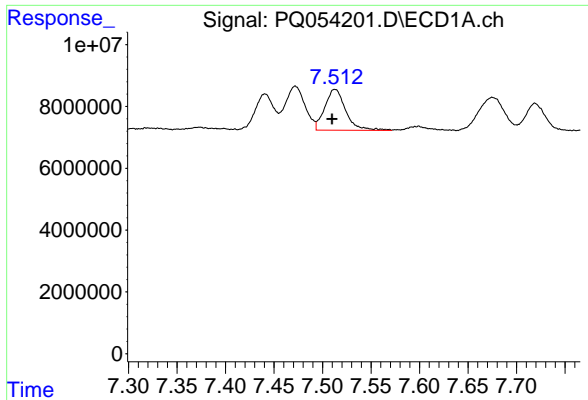
#24 AR-1248-4

R.T.: 7.472 min
 Delta R.T.: 0.002 min
 Response: 20097655
 Conc: 30.25 ng/ml



#24 AR-1248-4

R.T.: 5.965 min
 Delta R.T.: 0.000 min
 Response: 11792591
 Conc: 29.71 ng/ml

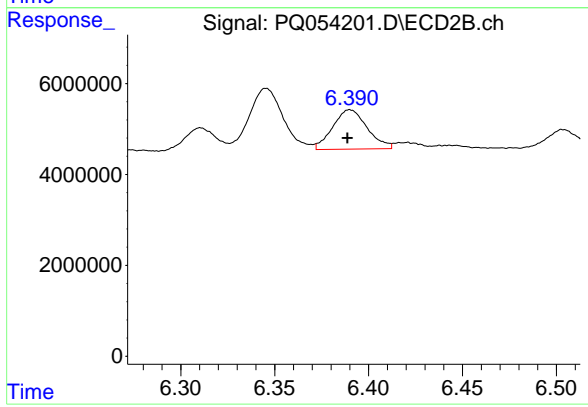


#25 AR-1248-5

R.T.: 7.513 min
 Delta R.T.: 0.003 min
 Response: 19798778
 Conc: 30.41 ng/ml

Instrument :
 ECD_Q
ClientSampled :
 LOD-MDL-WATER-01-QT3-2021

Manual Integrations
APPROVED
 mohammad
 8/2/2021 12:58:13 PM



#25 AR-1248-5

R.T.: 6.390 min
 Delta R.T.: 0.000 min
 Response: 11073707
 Conc: 27.78 ng/ml m