

Data Path : Z:\pestpcbsrv\HPCHEM1\ECD_Q\Data\PQ073124\
 Data File : PQ067582.D
 Signal(s) : Signal #1: ECD1A.ch Signal #2: ECD2B.ch
 Acq On : 31 Jul 2024 17:52
 Operator : YP\AJ
 Sample : PB162403BL
 Misc :
 ALS Vial : 22 Sample Multiplier: 1

Instrument :
 ECD_Q
 ClientSampleId :
 PB162403BL

Integration File signal 1: autoint1.e
 Integration File signal 2: autoint2.e
 Quant Time: Aug 01 04:59:41 2024
 Quant Method : Z:\pestpcbsrv\HPCHEM1\ECD_Q\Method\PQ072424.M
 Quant Title : GC EXTRACTABLES
 QLast Update : Wed Jul 24 19:21:12 2024
 Response via : Initial Calibration
 Integrator: ChemStation

Volume Inj. : 2 µl
 Signal #1 Phase : ZB-MR1 Signal #2 Phase: ZB-MR2
 Signal #1 Info : 30Mx0.32mmx 0.50µ Signal #2 Info : 30M x 0.32mm x 0.25µm

Compound	RT#1	RT#2	Resp#1	Resp#2	ng/ml	ng/ml

System Monitoring Compounds						
1) SA Tetrachlo...	3.460	2.828	115.9E6	122.1E6	20.338	20.159
2) SA Decachlor...	8.734	7.612	85716369	111.2E6	22.390	19.344

Target Compounds

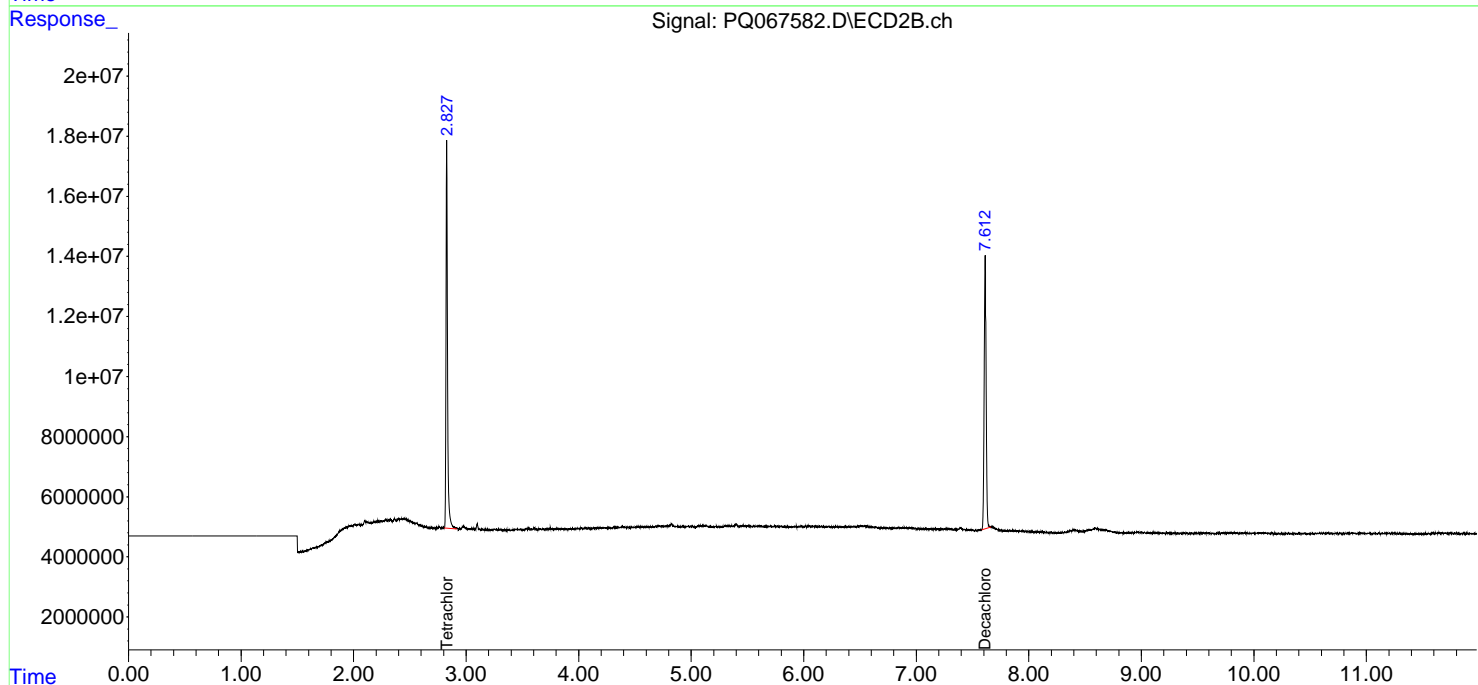
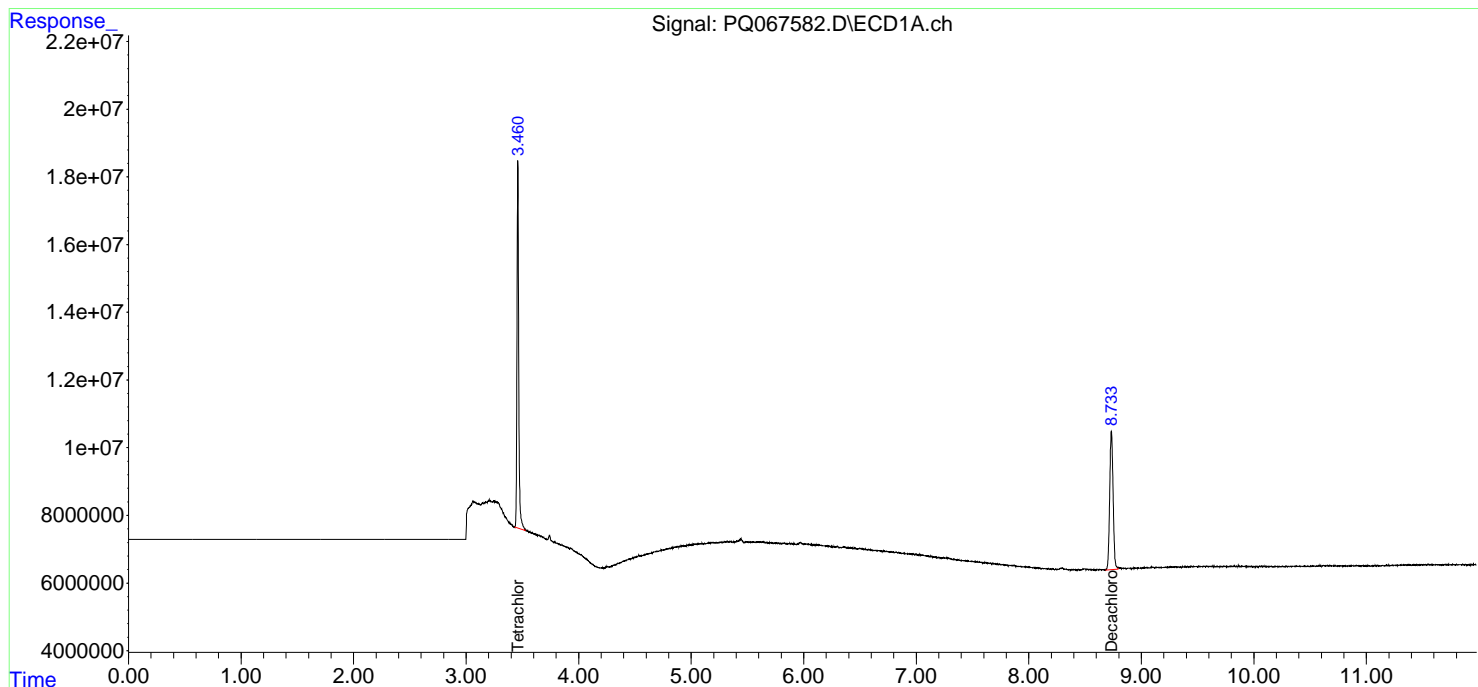
(f)=RT Delta > 1/2 Window (#)=Amounts differ by > 25% (m)=manual int.

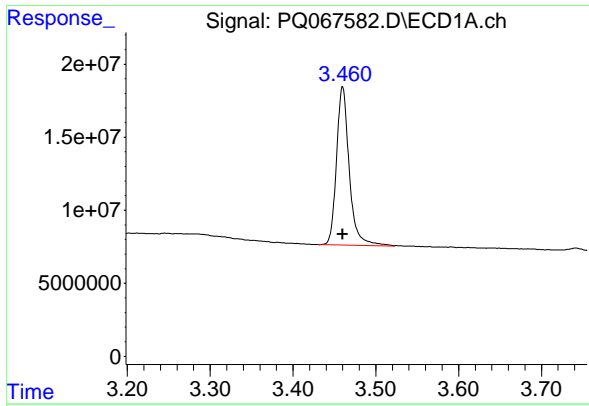
Data Path : Z:\pestpcbsrv\HPCHEM1\ECD_Q\Data\PQ073124\
 Data File : PQ067582.D
 Signal(s) : Signal #1: ECD1A.ch Signal #2: ECD2B.ch
 Acq On : 31 Jul 2024 17:52
 Operator : YP\AJ
 Sample : PB162403BL
 Misc :
 ALS Vial : 22 Sample Multiplier: 1

Instrument :
 ECD_Q
 ClientSampleId :
 PB162403BL

Integration File signal 1: autoint1.e
 Integration File signal 2: autoint2.e
 Quant Time: Aug 01 04:59:41 2024
 Quant Method : Z:\pestpcbsrv\HPCHEM1\ECD_Q\Method\PQ072424.M
 Quant Title : GC EXTRACTABLES
 QLast Update : Wed Jul 24 19:21:12 2024
 Response via : Initial Calibration
 Integrator: ChemStation

Volume Inj. : 2 µl
 Signal #1 Phase : ZB-MR1 Signal #2 Phase: ZB-MR2
 Signal #1 Info : 30Mx0.32mmx 0.50µm Signal #2 Info : 30M x 0.32mm x 0.25µm

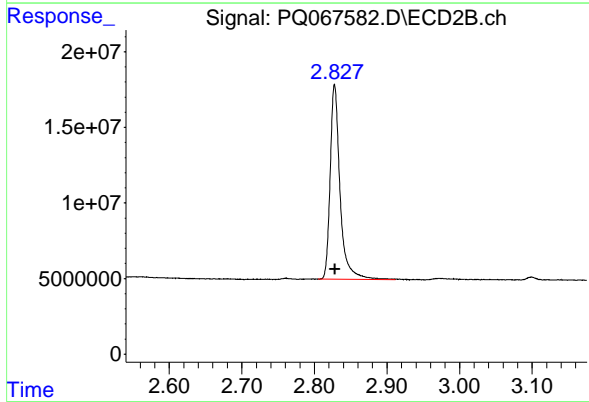




#1 Tetrachloro-m-xylene

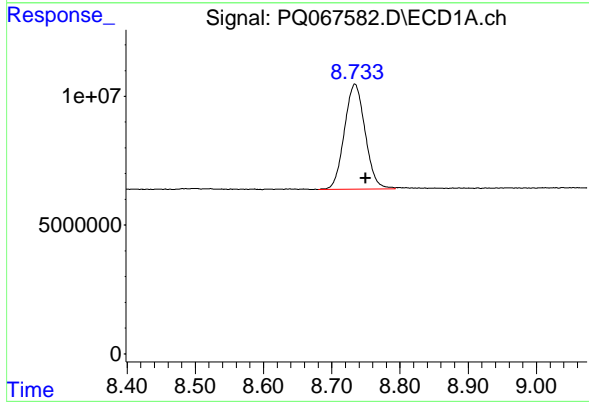
R.T.: 3.460 min
 Delta R.T.: 0.000 min
 Response: 115867719
 Conc: 20.34 ng/ml

Instrument :
 ECD_Q
 ClientSampleId :
 PB162403BL



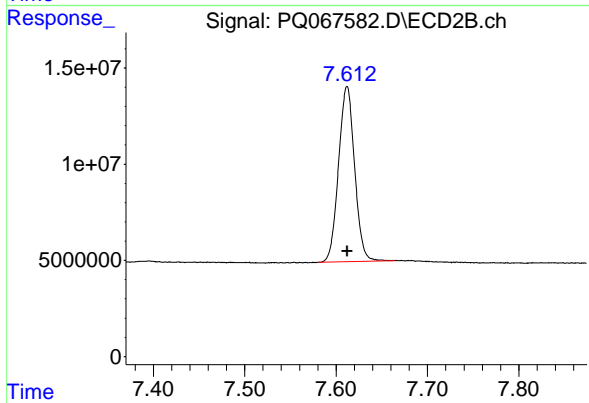
#1 Tetrachloro-m-xylene

R.T.: 2.828 min
 Delta R.T.: 0.000 min
 Response: 122065617
 Conc: 20.16 ng/ml



#2 Decachlorobiphenyl

R.T.: 8.734 min
 Delta R.T.: -0.016 min
 Response: 85716369
 Conc: 22.39 ng/ml



#2 Decachlorobiphenyl

R.T.: 7.612 min
 Delta R.T.: 0.000 min
 Response: 111199121
 Conc: 19.34 ng/ml