

Data Path : Z:\pestpcbsrv\HPCHEM1\ECD_Q\Data\PQ080119\
 Data File : PQ041944.D
 Signal(s) : Signal #1: ECD1A.ch Signal #2: ECD2B.ch
 Acq On : 01 Aug 2019 17:07
 Operator : SM\AJ
 Sample : K4028-06
 Misc :
 ALS Vial : 19 Sample Multiplier: 1

Instrument :
 ECD_Q
 ClientSampled :
 BENY8

Integration File signal 1: autoint1.e
 Integration File signal 2: autoint2.e
 Quant Time: Aug 02 01:00:47 2019
 Quant Method : Z:\pestpcbsrv\HPCHEM1\ECD_Q\Method\PQ072719CLP.M
 Quant Title : GC EXTRACTABLES
 QLast Update : Mon Jul 29 04:03:40 2019
 Response via : Initial Calibration
 Integrator: ChemStation

Volume Inj. : 1 µl
 Signal #1 Phase : ZB MR1 Signal #2 Phase: ZB MR2
 Signal #1 Info : 30Mx0.32mmx 0.5µm Signal #2 Info : 30M x 0.32mm x 0.25µm

Compound	RT#1	RT#2	Resp#1	Resp#2	ng/ml	ng/ml
System Monitoring Compounds						
1) SA Tetrachlo...	5.695	4.754	36405818	34265686	15.874	17.780
2) SA Decachlor...	12.094	10.509	184.7E6	150.4E6	21.907	31.090 #
Target Compounds						
3) L1 AR-1016-1	7.141	6.206	29737244	27922984	275.131	269.087
4) L1 AR-1016-2	7.167	6.227	36142424	22790309	230.901	159.073 #
5) L1 AR-1016-3	0.000	6.443	0	14576097	N.D.	195.463 #
6) L1 AR-1016-4	0.000	6.496	0	66946869	N.D.	1079.609 #
7) L1 AR-1016-5	7.683	6.748	61453599	46091578	781.751	566.212 #
8) L2 AR-1221-1	0.000	5.057	0	1616159	N.D.	78.487 #
9) L2 AR-1221-2	0.000	5.176	0	3252475	N.D.	203.665 #
10) L2 AR-1221-3	0.000	5.283	0	4188810	N.D.	76.814 #
11) L3 AR-1232-1	0.000	5.283	0	4188810	N.D.	86.747 #
12) L3 AR-1232-2	6.824	6.227	40368273	22790309	1228.616	399.635 #
13) L3 AR-1232-3	7.167	6.443	36142424	14576097	541.351	488.811
14) L3 AR-1232-4	0.000	6.544	0	60567000	N.D.	2268.708 #
15) L3 AR-1232-5	7.455	6.748	72923473	46091578	3393.325	1571.689 #
16) L4 AR-1242-1	7.141	6.206	29737244	27922984	332.449	341.191
17) L4 AR-1242-2	7.167	6.227	36142424	22790309	281.064	201.795 #
18) L4 AR-1242-3	0.000	6.443	0	14576097	N.D.	246.749 #
19) L4 AR-1242-4	0.000	6.544	0	60567000	N.D.	1021.412 #
20) L4 AR-1242-5	8.173	7.158	85180830	114.0E6	960.045	1284.270 #
21) L5 AR-1248-1	7.141	6.206	29737244	27922984	401.117	421.136
22) L5 AR-1248-2	7.455	6.496	72923473	66946869	790.385	767.848
23) L5 AR-1248-3	7.683	6.544	61453599	60567000	548.491	678.578
24) L5 AR-1248-4	8.131	6.748	51572958	46091578	329.838	418.476 #
25) L5 AR-1248-5	8.173	7.205	85180830	141.4E6	562.906	1103.212 #
26) L6 AR-1254-1	8.100	7.158	88635191	114.0E6	637.138	623.539
27) L6 AR-1254-2	8.343	7.326	353.6E6	85839794	1544.929	530.297 #
28) L6 AR-1254-3	8.733	7.773	182.6E6	186.9E6	667.954	647.877
29) L6 AR-1254-4	9.034	8.021	122.8E6	90409568	499.020	416.495
30) L6 AR-1254-5	9.473	8.467	116.8E6	110.4E6	431.260	367.133
31) L7 AR-1260-1	8.905	7.915	48337767	94992436	271.736	523.577 #
32) L7 AR-1260-2	9.175	8.117	72278029	74083526	286.505	301.968
33) L7 AR-1260-3	9.550	8.282	41373364	59650428	180.564	280.342 #
34) L7 AR-1260-4	9.818	8.779	550.5E6	26860497	2155.994	132.783 #
35) L7 AR-1260-5	10.142	9.029	97444010	56971607	144.663	96.529 #
36) L8 AR-1262-1	9.615	8.572	19762335	217.6E6	128.582	1516.923 #
37) L8 AR-1262-2	10.142	9.029	97444010	56971607	111.311	76.879 #
38) L8 AR-1262-3	10.480	9.325	39814812	32029838	62.700	101.241 #
39) L8 AR-1262-4	10.579	9.392	88074107	46847217	175.899	83.304 #
40) L8 AR-1262-5	11.285	9.917	26189057	37486365	64.329	131.252 #
41) L9 AR-1268-1	10.480	9.325	39814812	32029838	27.949	28.018

Data Path : Z:\pestpcbsrv\HPCHEM1\ECD_Q\Data\PQ080119\
 Data File : PQ041944.D
 Signal(s) : Signal #1: ECD1A.ch Signal #2: ECD2B.ch
 Acq On : 01 Aug 2019 17:07
 Operator : SM\AJ
 Sample : K4028-06
 Misc :
 ALS Vial : 19 Sample Multiplier: 1

Instrument :
 ECD_Q
 ClientSampleId :
 BENY8

Integration File signal 1: autoint1.e
 Integration File signal 2: autoint2.e
 Quant Time: Aug 02 01:00:47 2019
 Quant Method : Z:\pestpcbsrv\HPCHEM1\ECD_Q\Method\PQ072719CLP.M
 Quant Title : GC EXTRACTABLES
 QLast Update : Mon Jul 29 04:03:40 2019
 Response via : Initial Calibration
 Integrator: ChemStation

Volume Inj. : 1 µl
 Signal #1 Phase : ZB MR1 Signal #2 Phase: ZB MR2
 Signal #1 Info : 30Mx0.32mmx 0.5µm Signal #2 Info : 30M x 0.32mm x 0.25µm

	Compound	RT#1	RT#2	Resp#1	Resp#2	ng/ml	ng/ml
42)	L9 AR-1268-2	10.579	9.392	88074107	46847217	66.777	45.635 #
43)	L9 AR-1268-3	10.823	9.598	20456932	23828486	17.483	27.422 #
44)	L9 AR-1268-4	11.285	9.917	26189057	37486365	48.105	97.451 #
45)	L9 AR-1268-5	11.731	10.229	69345316	36251751	17.109	13.957

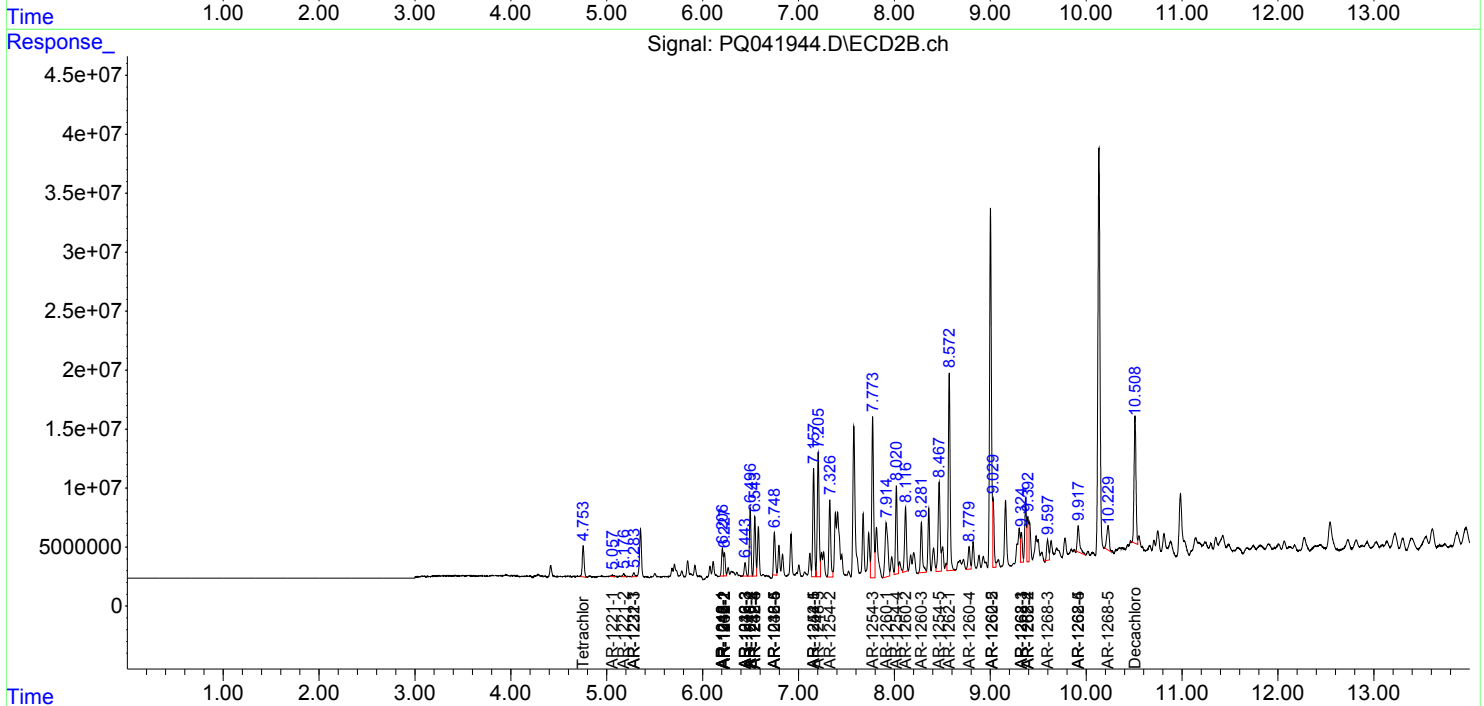
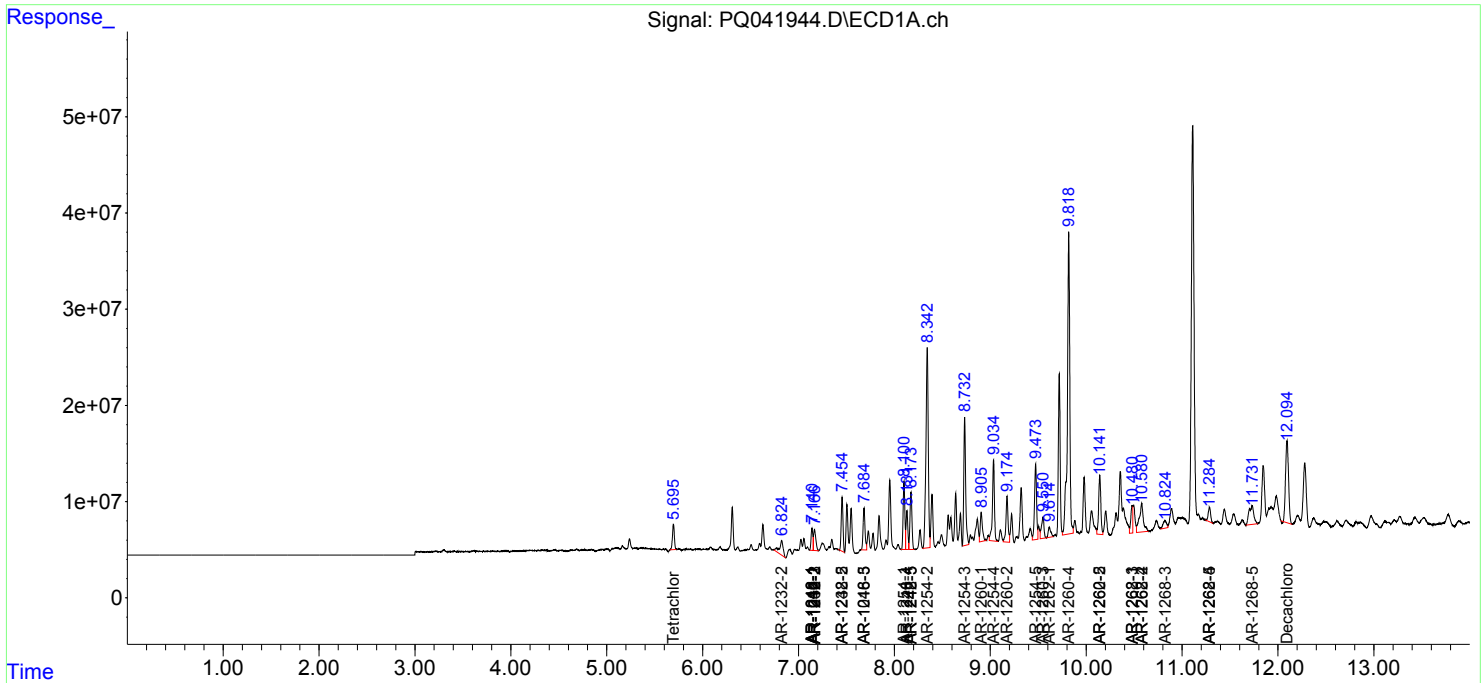
(f)=RT Delta > 1/2 Window (#)=Amounts differ by > 25% (m)=manual int.

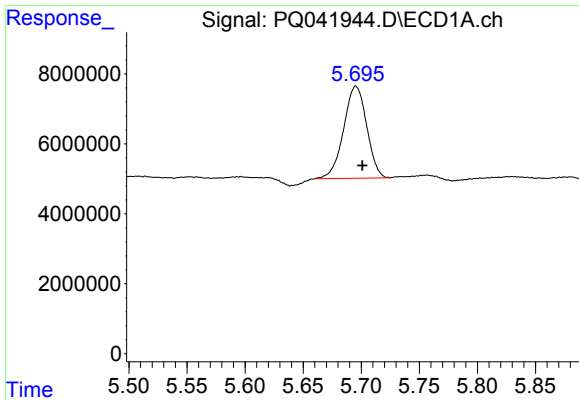
Data Path : Z:\pestpcbsrv\HPCHEM1\ECD_Q\Data\PQ080119\
 Data File : PQ041944.D
 Signal(s) : Signal #1: ECD1A.ch Signal #2: ECD2B.ch
 Acq On : 01 Aug 2019 17:07
 Operator : SM\AJ
 Sample : K4028-06
 Misc :
 ALS Vial : 19 Sample Multiplier: 1

Instrument :
 ECD_Q
 ClientSampled :
 BENY8

Integration File signal 1: autoint1.e
 Integration File signal 2: autoint2.e
 Quant Time: Aug 02 01:00:47 2019
 Quant Method : Z:\pestpcbsrv\HPCHEM1\ECD_Q\Method\PQ072719CLP.M
 Quant Title : GC EXTRACTABLES
 QLast Update : Mon Jul 29 04:03:40 2019
 Response via : Initial Calibration
 Integrator: ChemStation

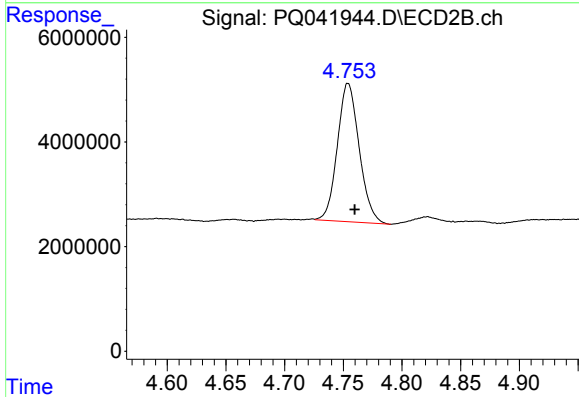
Volume Inj. : 1 µl
 Signal #1 Phase : ZB MR1 Signal #2 Phase: ZB MR2
 Signal #1 Info : 30Mx0.32mmx 0.5µm Signal #2 Info : 30M x 0.32mm x 0.25µm



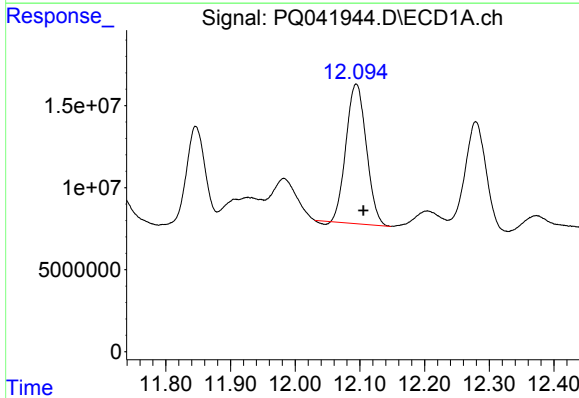


#1 Tetrachloro-m-xylene
 R.T.: 5.695 min
 Delta R.T.: -0.006 min
 Response: 36405818
 Conc: 15.87 ng/ml

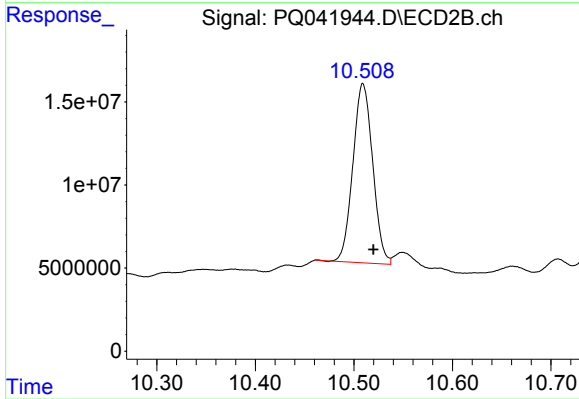
Instrument :
 ECD_Q
 ClientSampleId :
 BENY8



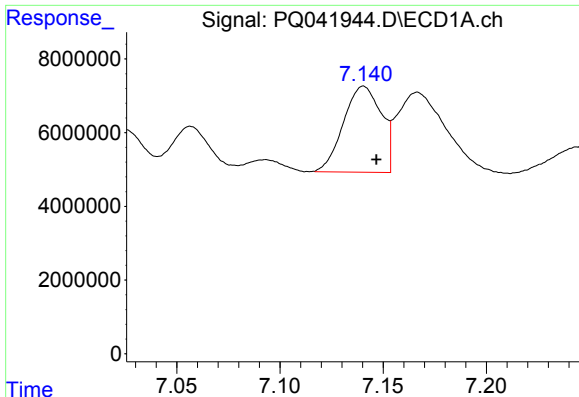
#1 Tetrachloro-m-xylene
 R.T.: 4.754 min
 Delta R.T.: -0.006 min
 Response: 34265686
 Conc: 17.78 ng/ml



#2 Decachlorobiphenyl
 R.T.: 12.094 min
 Delta R.T.: -0.011 min
 Response: 184703121
 Conc: 21.91 ng/ml



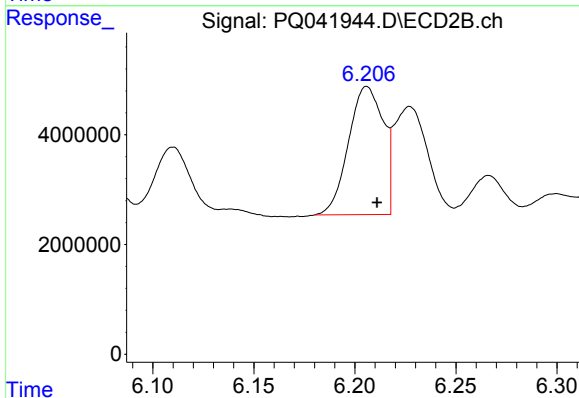
#2 Decachlorobiphenyl
 R.T.: 10.509 min
 Delta R.T.: -0.011 min
 Response: 150391765
 Conc: 31.09 ng/ml



#3 AR-1016-1

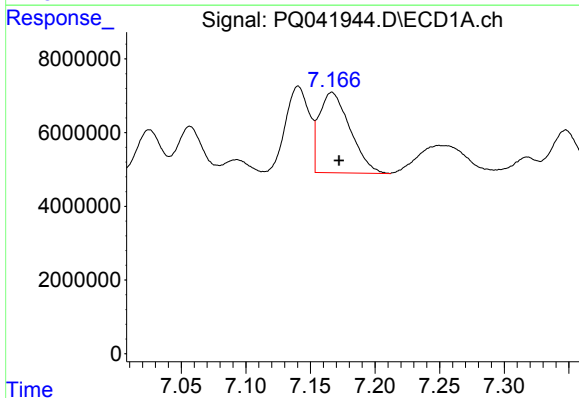
R.T.: 7.141 min
 Delta R.T.: -0.006 min
 Response: 29737244
 Conc: 275.13 ng/ml

Instrument :
 ECD_Q
 ClientSampled :
 BENY8



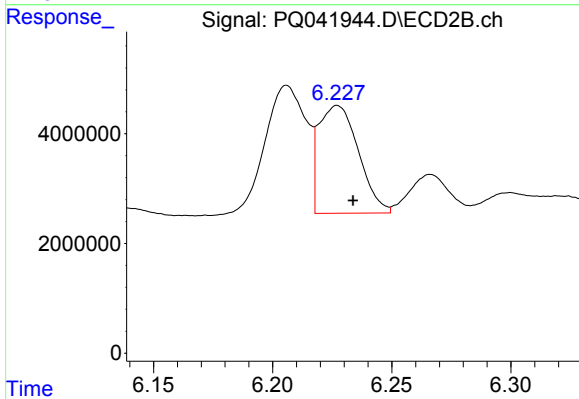
#3 AR-1016-1

R.T.: 6.206 min
 Delta R.T.: -0.005 min
 Response: 27922984
 Conc: 269.09 ng/ml



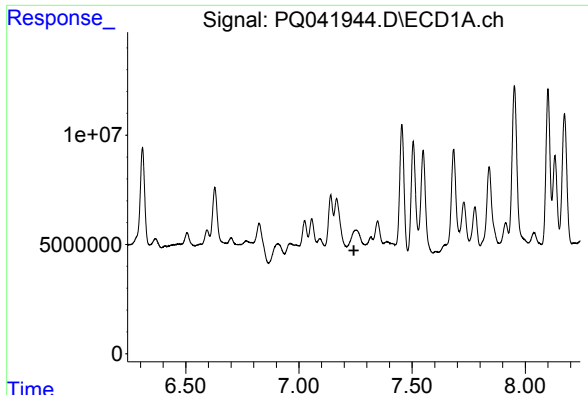
#4 AR-1016-2

R.T.: 7.167 min
 Delta R.T.: -0.006 min
 Response: 36142424
 Conc: 230.90 ng/ml



#4 AR-1016-2

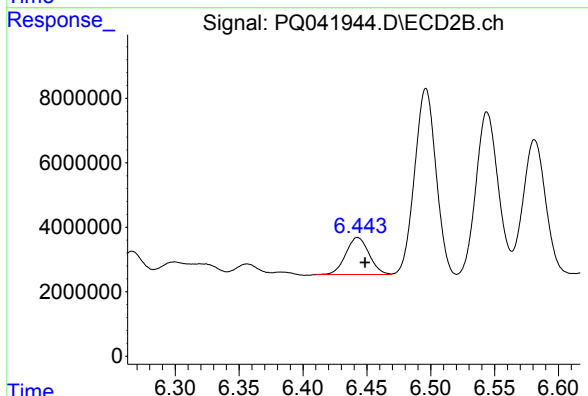
R.T.: 6.227 min
 Delta R.T.: -0.007 min
 Response: 22790309
 Conc: 159.07 ng/ml



#5 AR-1016-3

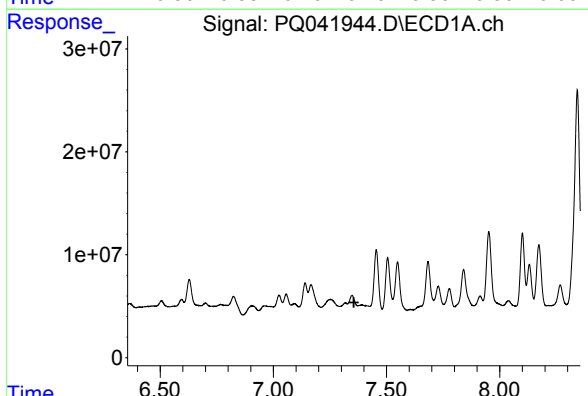
R.T.: 0.000 min
 Exp R.T. : 7.243 min
 Response: 0
 Conc: N.D.

Instrument :
 ECD_Q
 ClientSampleId :
 BENY8



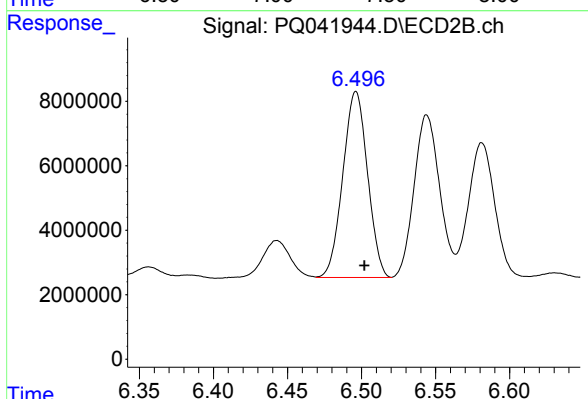
#5 AR-1016-3

R.T.: 6.443 min
 Delta R.T.: -0.006 min
 Response: 14576097
 Conc: 195.46 ng/ml



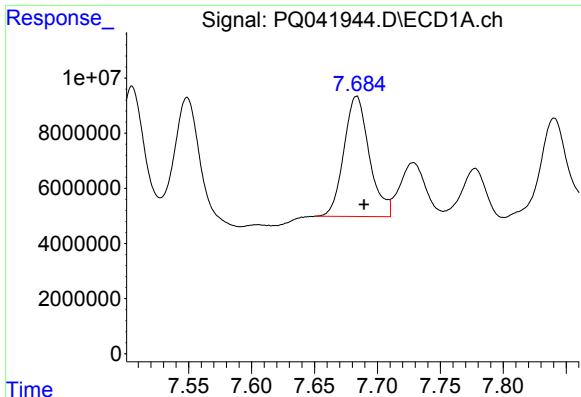
#6 AR-1016-4

R.T.: 0.000 min
 Exp R.T. : 7.356 min
 Response: 0
 Conc: N.D.



#6 AR-1016-4

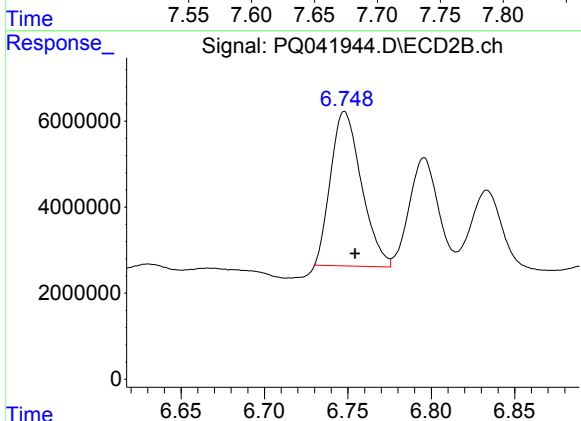
R.T.: 6.496 min
 Delta R.T.: -0.006 min
 Response: 66946869
 Conc: 1079.61 ng/ml



#7 AR-1016-5

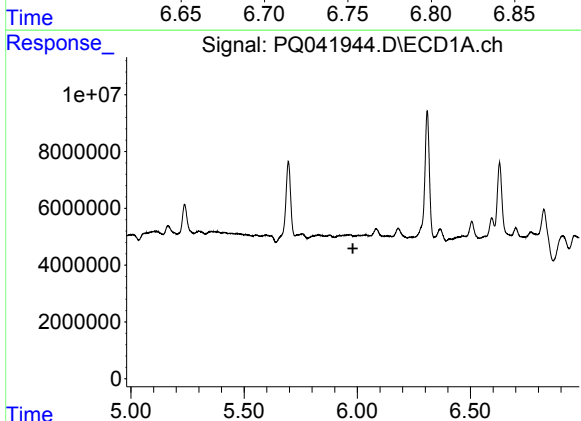
R.T.: 7.683 min
 Delta R.T.: -0.006 min
 Response: 61453599
 Conc: 781.75 ng/ml

Instrument :
 ECD_Q
 ClientSampled :
 BENY8



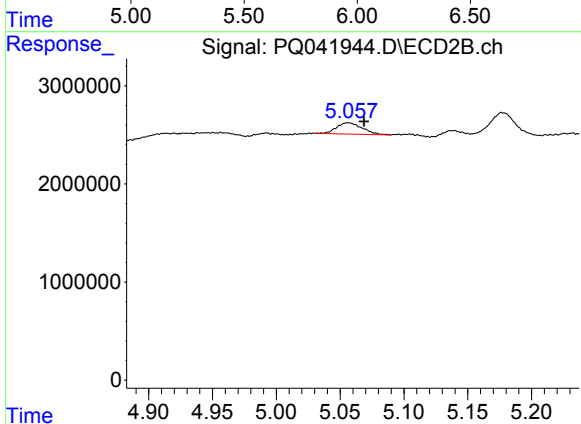
#7 AR-1016-5

R.T.: 6.748 min
 Delta R.T.: -0.006 min
 Response: 46091578
 Conc: 566.21 ng/ml



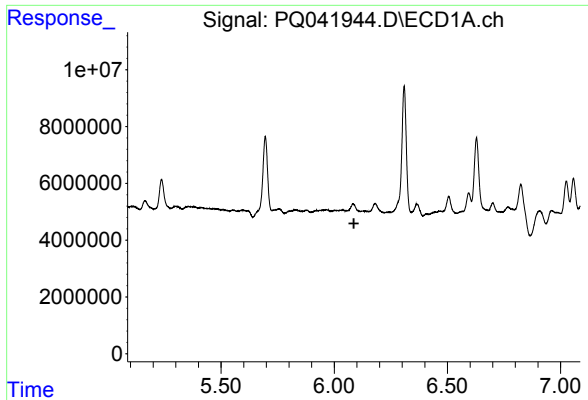
#8 AR-1221-1

R.T.: 0.000 min
 Exp R.T. : 5.980 min
 Response: 0
 Conc: N.D.



#8 AR-1221-1

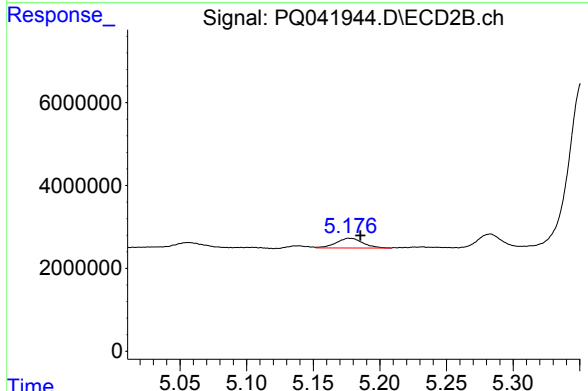
R.T.: 5.057 min
 Delta R.T.: -0.012 min
 Response: 1616159
 Conc: 78.49 ng/ml



#9 AR-1221-2

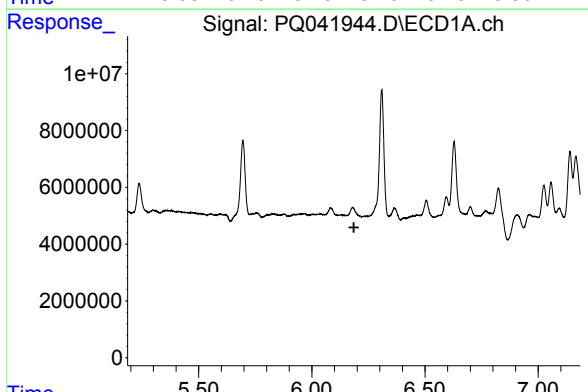
R.T.: 0.000 min
 Exp R.T.: 6.087 min
 Response: 0
 Conc: N.D.

Instrument :
 ECD_Q
 ClientSampled :
 BENY8



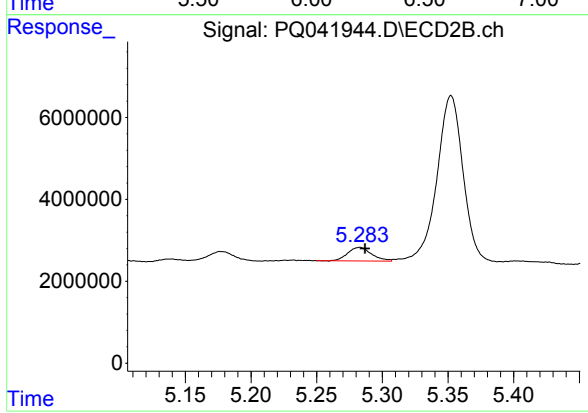
#9 AR-1221-2

R.T.: 5.176 min
 Delta R.T.: -0.009 min
 Response: 3252475
 Conc: 203.67 ng/ml



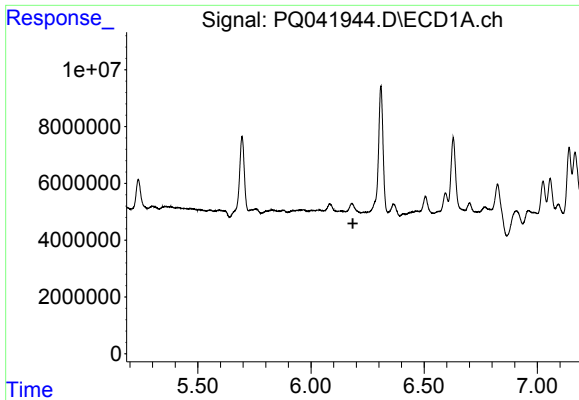
#10 AR-1221-3

R.T.: 0.000 min
 Exp R.T.: 6.186 min
 Response: 0
 Conc: N.D.



#10 AR-1221-3

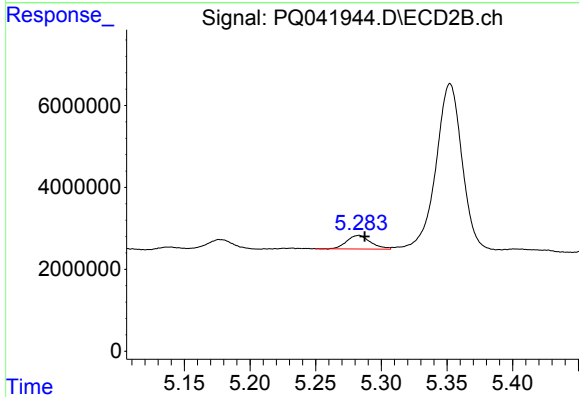
R.T.: 5.283 min
 Delta R.T.: -0.004 min
 Response: 4188810
 Conc: 76.81 ng/ml



#11 AR-1232-1

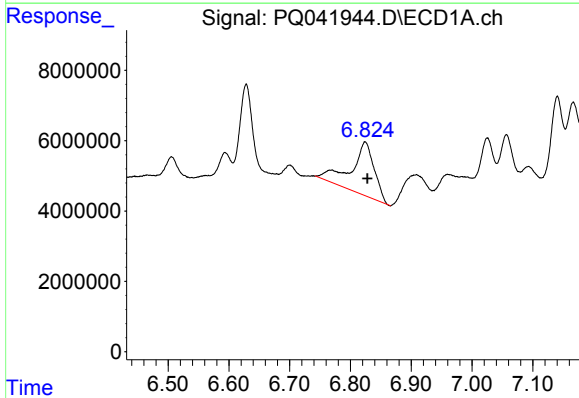
R.T.: 0.000 min
 Exp R.T.: 6.185 min
 Response: 0
 Conc: N.D.

Instrument :
 ECD_Q
 ClientSampled :
 BENY8



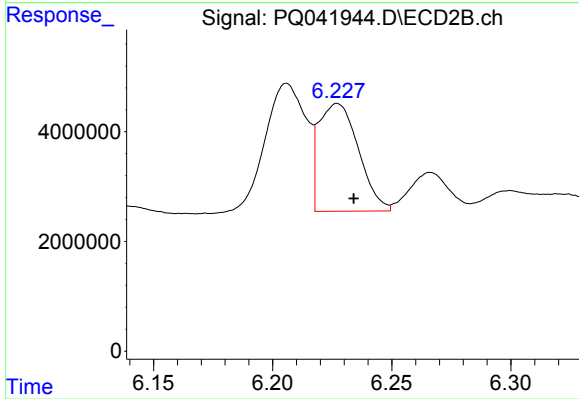
#11 AR-1232-1

R.T.: 5.283 min
 Delta R.T.: -0.004 min
 Response: 4188810
 Conc: 86.75 ng/ml



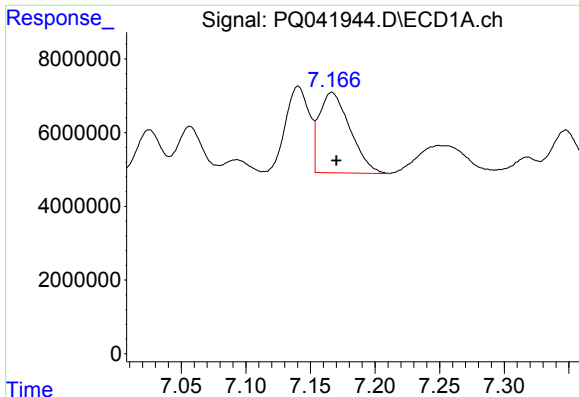
#12 AR-1232-2

R.T.: 6.824 min
 Delta R.T.: -0.003 min
 Response: 40368273
 Conc: 1228.62 ng/ml



#12 AR-1232-2

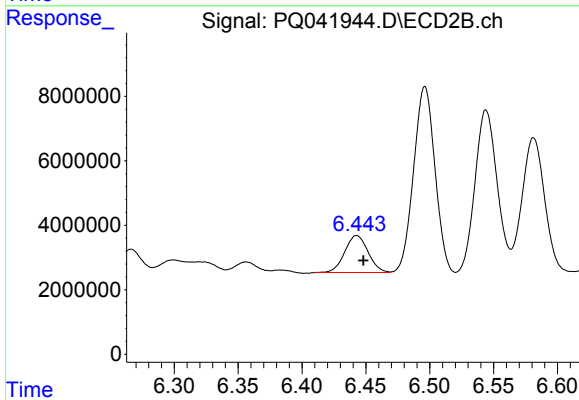
R.T.: 6.227 min
 Delta R.T.: -0.007 min
 Response: 22790309
 Conc: 399.63 ng/ml



#13 AR-1232-3

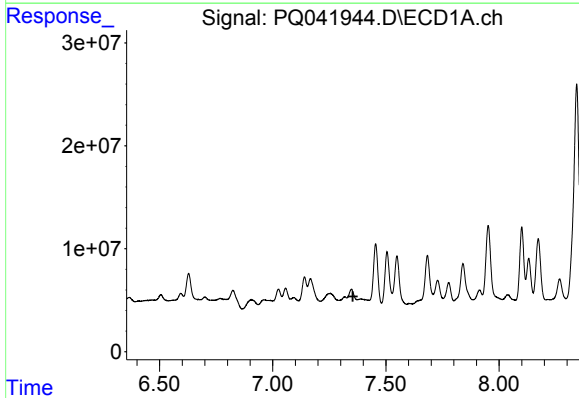
R.T.: 7.167 min
 Delta R.T.: -0.004 min
 Response: 36142424
 Conc: 541.35 ng/ml

Instrument :
 ECD_Q
 ClientSampled :
 BENY8



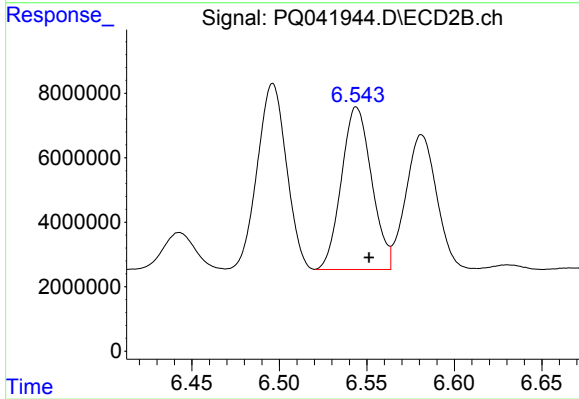
#13 AR-1232-3

R.T.: 6.443 min
 Delta R.T.: -0.005 min
 Response: 14576097
 Conc: 488.81 ng/ml



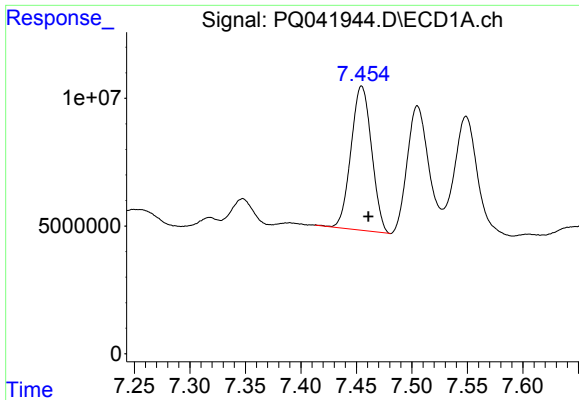
#14 AR-1232-4

R.T.: 0.000 min
 Exp R.T. : 7.354 min
 Response: 0
 Conc: N.D.



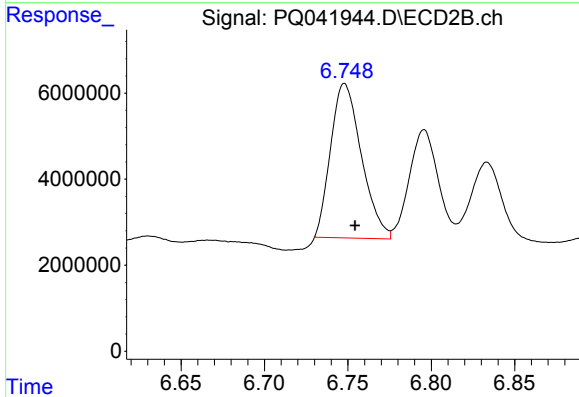
#14 AR-1232-4

R.T.: 6.544 min
 Delta R.T.: -0.007 min
 Response: 60567000
 Conc: 2268.71 ng/ml

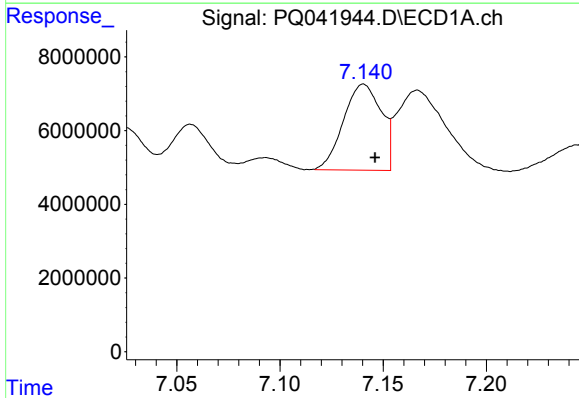


#15 AR-1232-5
R.T.: 7.455 min
Delta R.T.: -0.006 min
Response: 72923473
Conc: 3393.32 ng/ml

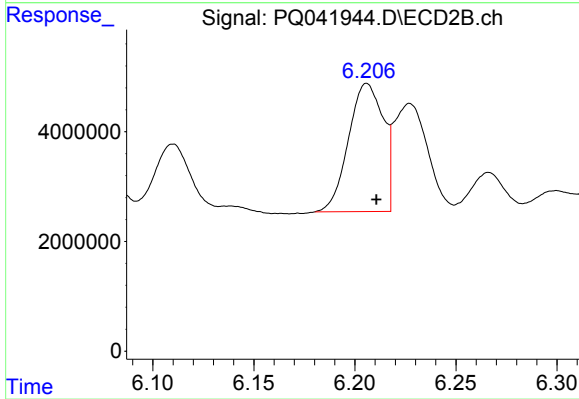
Instrument :
ECD_Q
ClientSampleId :
BENY8



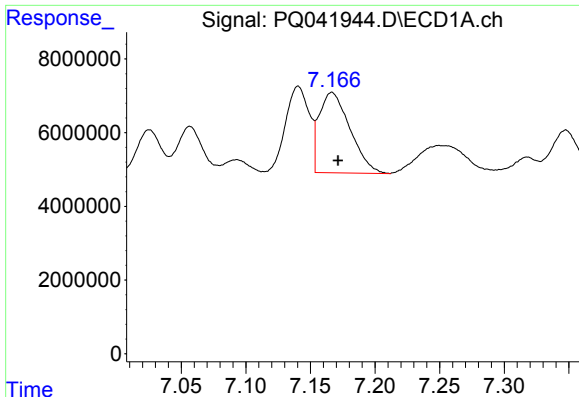
#15 AR-1232-5
R.T.: 6.748 min
Delta R.T.: -0.006 min
Response: 46091578
Conc: 1571.69 ng/ml



#16 AR-1242-1
R.T.: 7.141 min
Delta R.T.: -0.006 min
Response: 29737244
Conc: 332.45 ng/ml



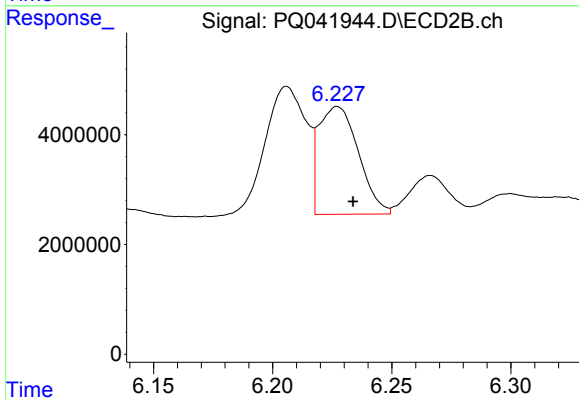
#16 AR-1242-1
R.T.: 6.206 min
Delta R.T.: -0.005 min
Response: 27922984
Conc: 341.19 ng/ml



#17 AR-1242-2

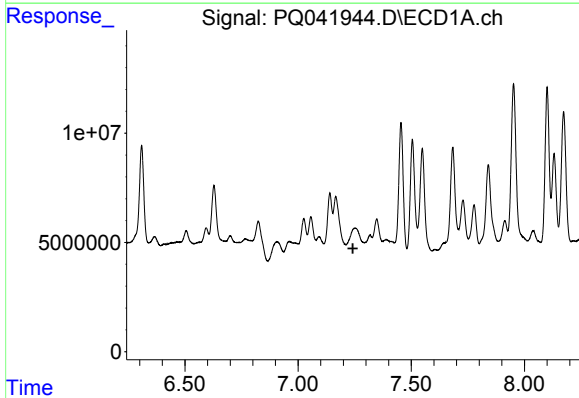
R.T.: 7.167 min
 Delta R.T.: -0.005 min
 Response: 36142424
 Conc: 281.06 ng/ml

Instrument :
 ECD_Q
 ClientSampleId :
 BENY8



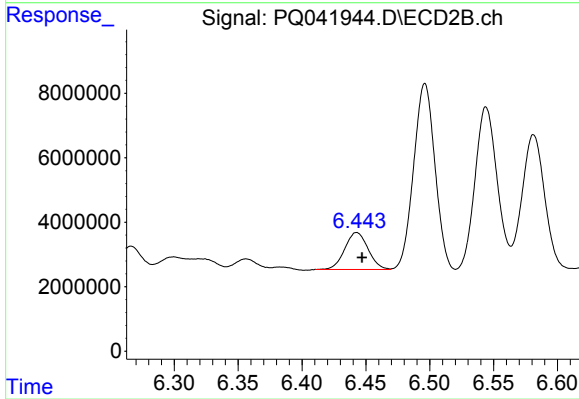
#17 AR-1242-2

R.T.: 6.227 min
 Delta R.T.: -0.007 min
 Response: 22790309
 Conc: 201.80 ng/ml



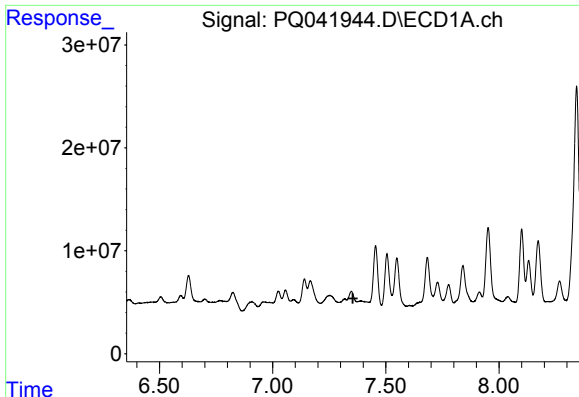
#18 AR-1242-3

R.T.: 0.000 min
 Exp R.T. : 7.242 min
 Response: 0
 Conc: N.D.



#18 AR-1242-3

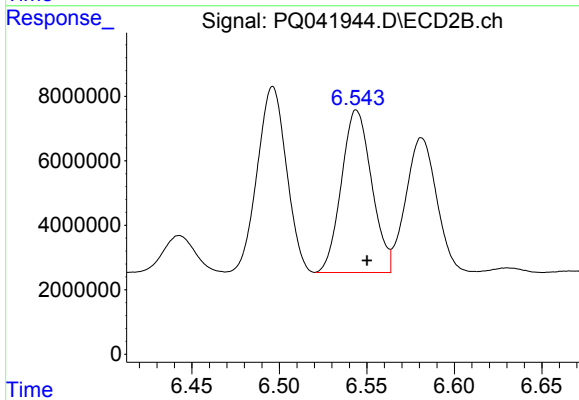
R.T.: 6.443 min
 Delta R.T.: -0.004 min
 Response: 14576097
 Conc: 246.75 ng/ml



#19 AR-1242-4

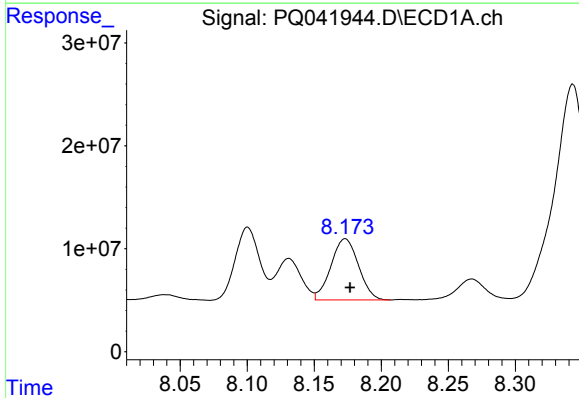
R.T.: 0.000 min
 Exp R.T.: 7.355 min
 Response: 0
 Conc: N.D.

Instrument :
 ECD_Q
 ClientSampleId :
 BENY8



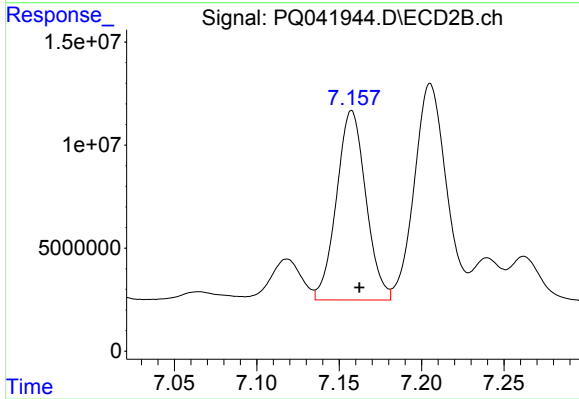
#19 AR-1242-4

R.T.: 6.544 min
 Delta R.T.: -0.006 min
 Response: 60567000
 Conc: 1021.41 ng/ml



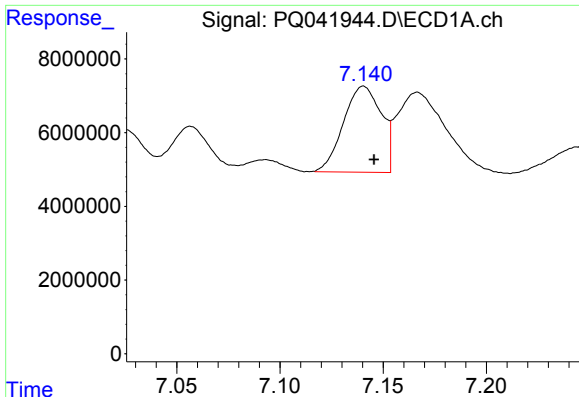
#20 AR-1242-5

R.T.: 8.173 min
 Delta R.T.: -0.004 min
 Response: 85180830
 Conc: 960.05 ng/ml



#20 AR-1242-5

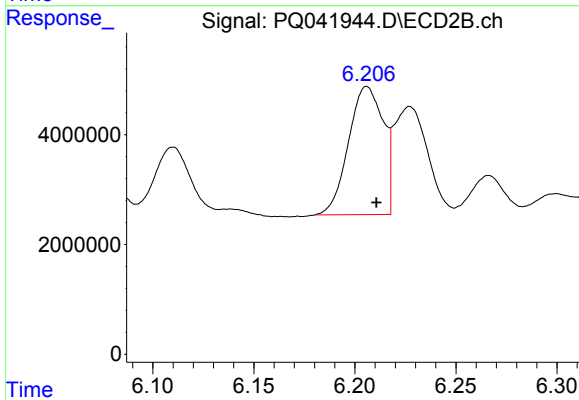
R.T.: 7.158 min
 Delta R.T.: -0.005 min
 Response: 114035778
 Conc: 1284.27 ng/ml



#21 AR-1248-1

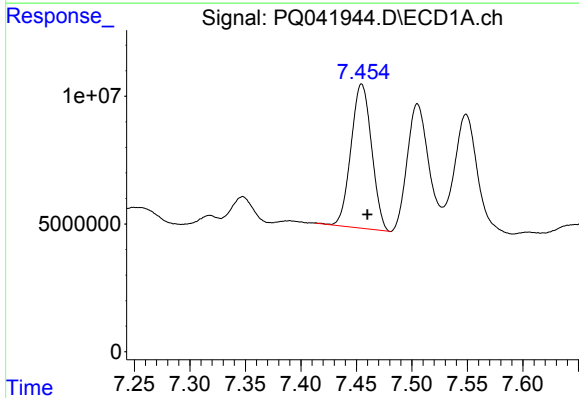
R.T.: 7.141 min
 Delta R.T.: -0.005 min
 Response: 29737244
 Conc: 401.12 ng/ml

Instrument :
 ECD_Q
 ClientSampled :
 BENY8



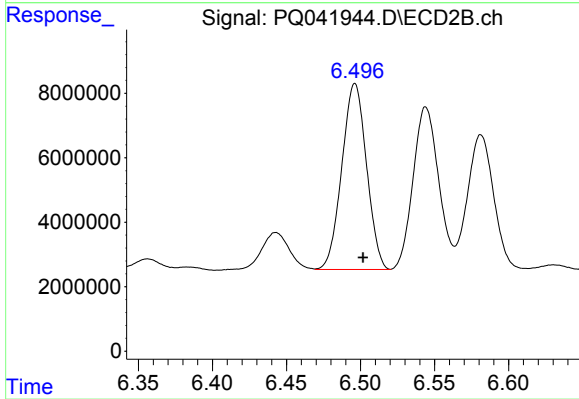
#21 AR-1248-1

R.T.: 6.206 min
 Delta R.T.: -0.005 min
 Response: 27922984
 Conc: 421.14 ng/ml



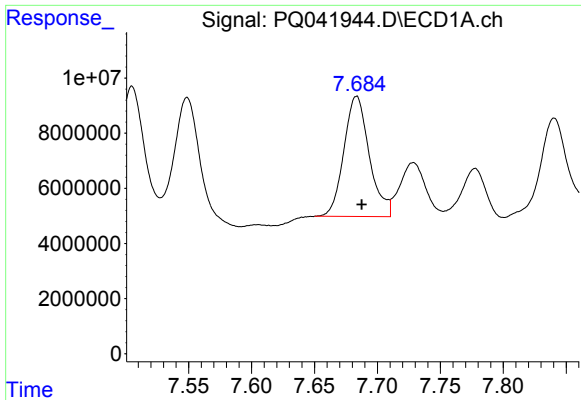
#22 AR-1248-2

R.T.: 7.455 min
 Delta R.T.: -0.005 min
 Response: 72923473
 Conc: 790.39 ng/ml



#22 AR-1248-2

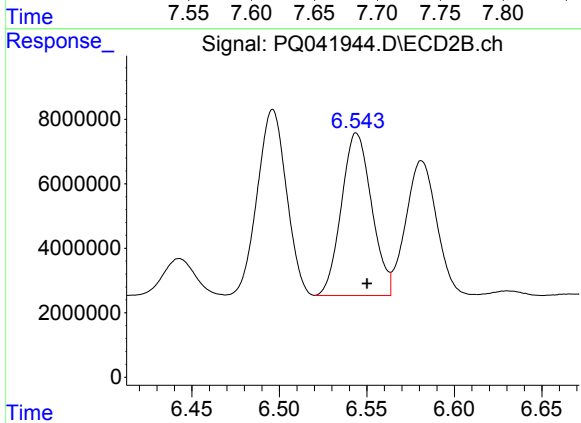
R.T.: 6.496 min
 Delta R.T.: -0.006 min
 Response: 66946869
 Conc: 767.85 ng/ml



#23 AR-1248-3

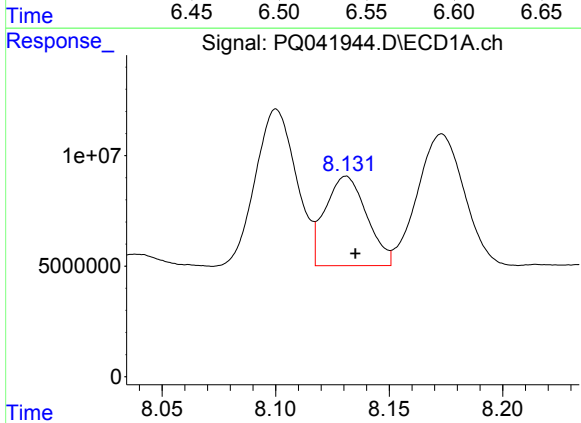
R.T.: 7.683 min
 Delta R.T.: -0.004 min
 Response: 61453599
 Conc: 548.49 ng/ml

Instrument :
 ECD_Q
 ClientSampled :
 BENY8



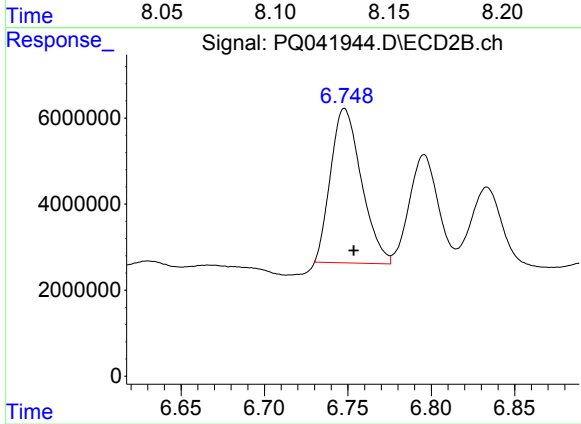
#23 AR-1248-3

R.T.: 6.544 min
 Delta R.T.: -0.006 min
 Response: 60567000
 Conc: 678.58 ng/ml



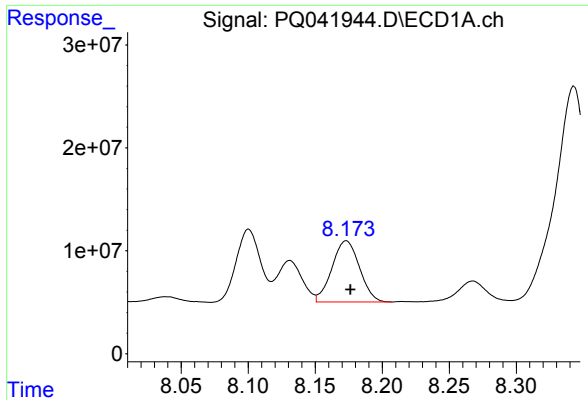
#24 AR-1248-4

R.T.: 8.131 min
 Delta R.T.: -0.004 min
 Response: 51572958
 Conc: 329.84 ng/ml



#24 AR-1248-4

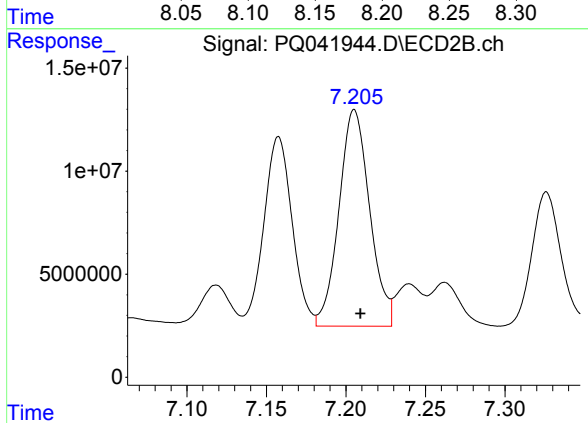
R.T.: 6.748 min
 Delta R.T.: -0.006 min
 Response: 46091578
 Conc: 418.48 ng/ml



#25 AR-1248-5

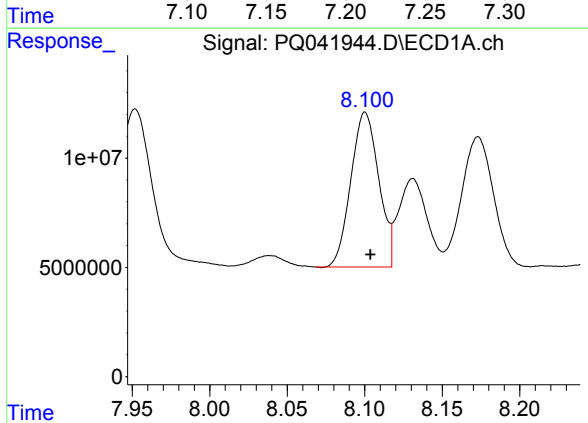
R.T.: 8.173 min
 Delta R.T.: -0.003 min
 Response: 85180830
 Conc: 562.91 ng/ml

Instrument :
 ECD_Q
 ClientSampleId :
 BENY8



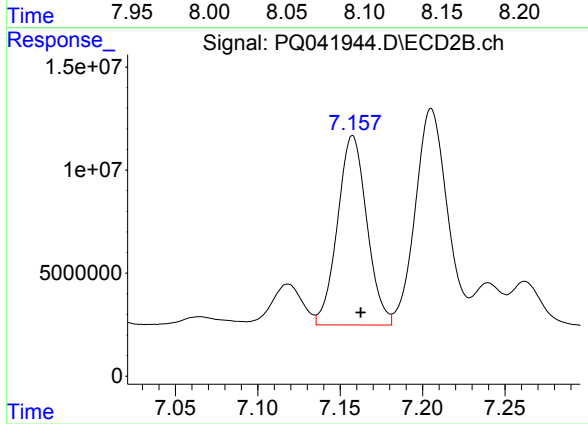
#25 AR-1248-5

R.T.: 7.205 min
 Delta R.T.: -0.004 min
 Response: 141403796
 Conc: 1103.21 ng/ml



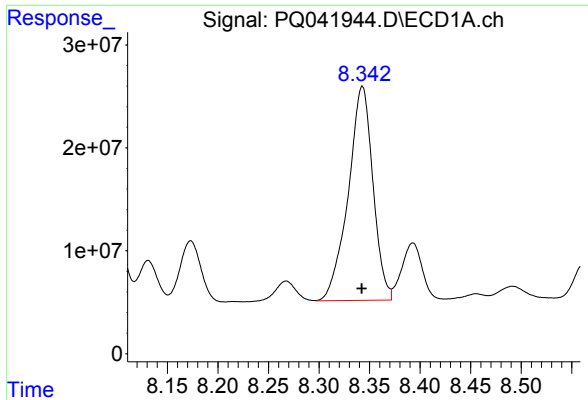
#26 AR-1254-1

R.T.: 8.100 min
 Delta R.T.: -0.004 min
 Response: 88635191
 Conc: 637.14 ng/ml



#26 AR-1254-1

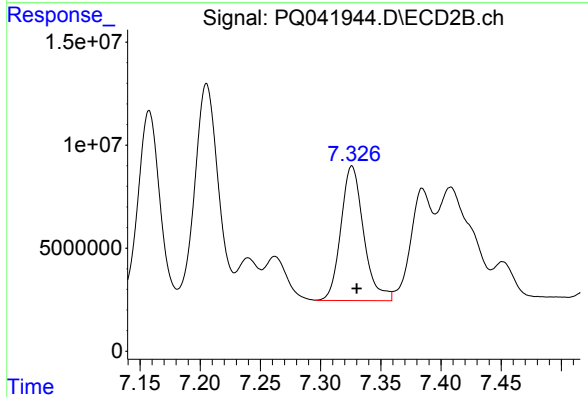
R.T.: 7.158 min
 Delta R.T.: -0.005 min
 Response: 114035778
 Conc: 623.54 ng/ml



#27 AR-1254-2

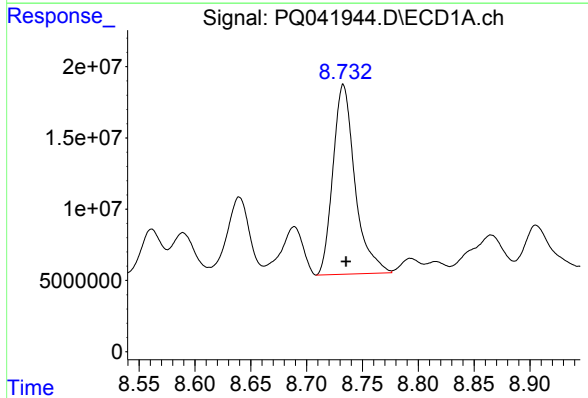
R.T.: 8.343 min
 Delta R.T.: 0.000 min
 Response: 353607744
 Conc: 1544.93 ng/ml

Instrument :
 ECD_Q
 ClientSampled :
 BENY8



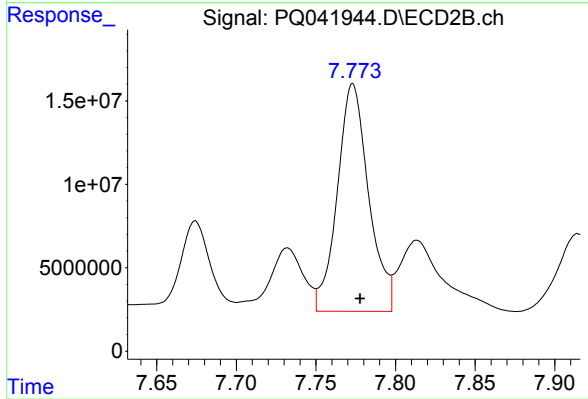
#27 AR-1254-2

R.T.: 7.326 min
 Delta R.T.: -0.004 min
 Response: 85839794
 Conc: 530.30 ng/ml



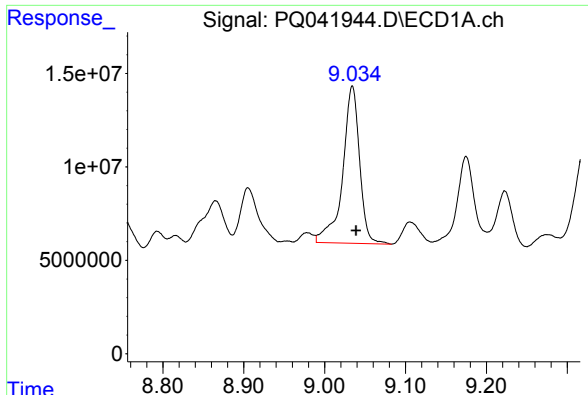
#28 AR-1254-3

R.T.: 8.733 min
 Delta R.T.: -0.002 min
 Response: 182636558
 Conc: 667.95 ng/ml



#28 AR-1254-3

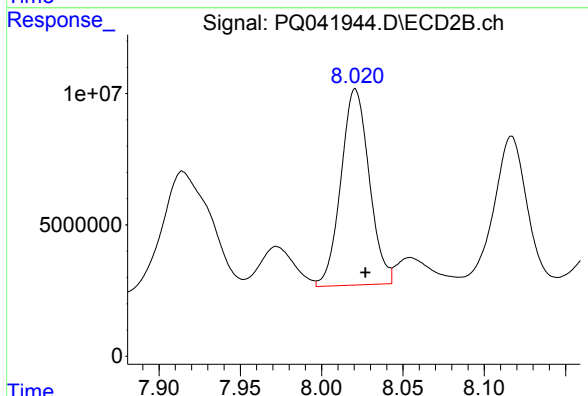
R.T.: 7.773 min
 Delta R.T.: -0.005 min
 Response: 186852339
 Conc: 647.88 ng/ml



#29 AR-1254-4

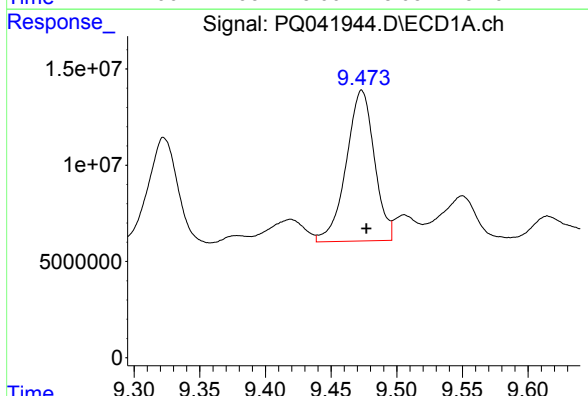
R.T.: 9.034 min
Delta R.T.: -0.004 min
Response: 122846215
Conc: 499.02 ng/ml

Instrument :
ECD_Q
ClientSampled :
BENY8



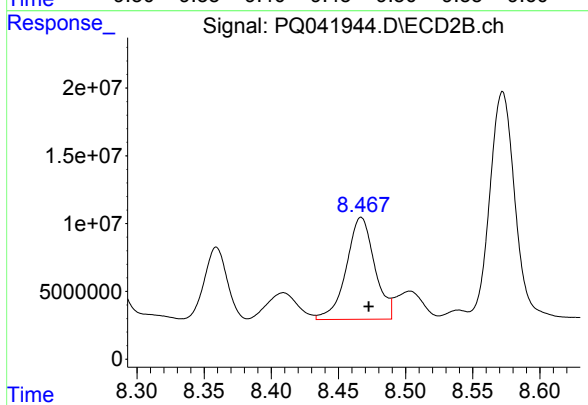
#29 AR-1254-4

R.T.: 8.021 min
Delta R.T.: -0.006 min
Response: 90409568
Conc: 416.49 ng/ml



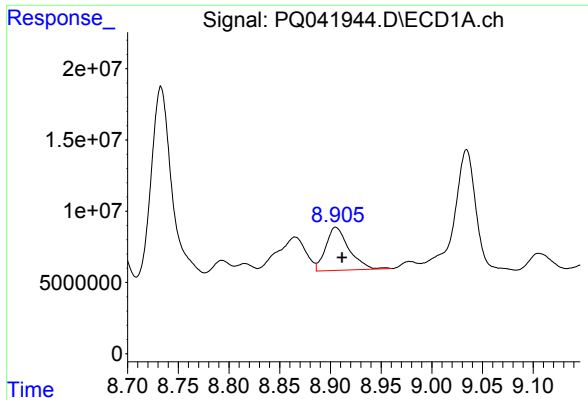
#30 AR-1254-5

R.T.: 9.473 min
Delta R.T.: -0.004 min
Response: 116804740
Conc: 431.26 ng/ml



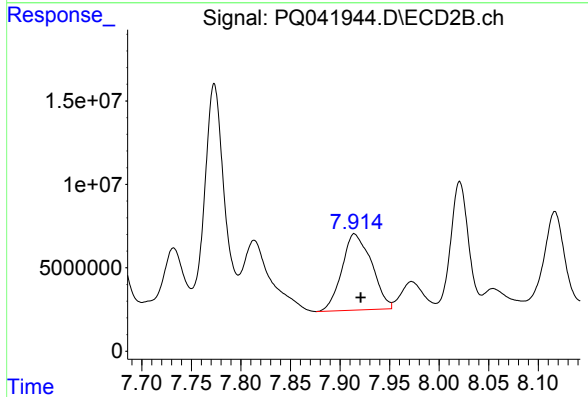
#30 AR-1254-5

R.T.: 8.467 min
Delta R.T.: -0.006 min
Response: 110421930
Conc: 367.13 ng/ml

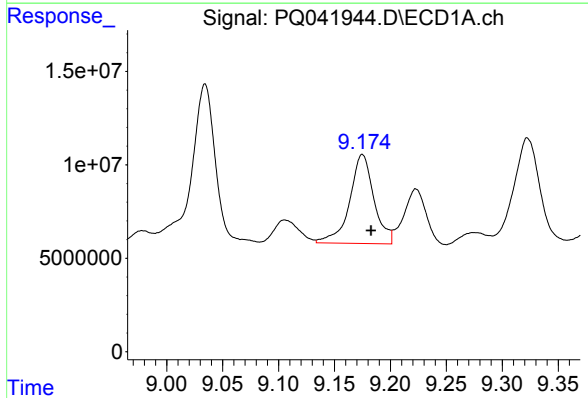


#31 AR-1260-1
 R.T.: 8.905 min
 Delta R.T.: -0.006 min
 Response: 48337767
 Conc: 271.74 ng/ml

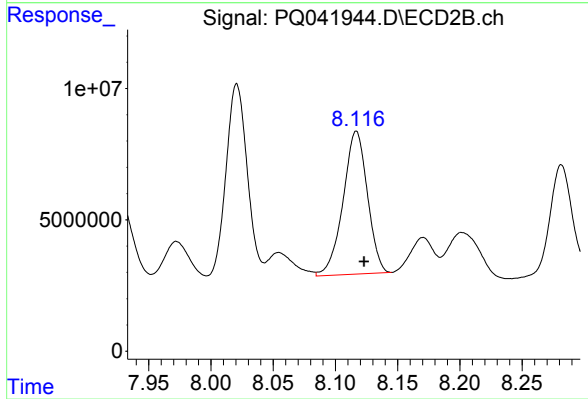
Instrument :
 ECD_Q
 ClientSampleId :
 BENY8



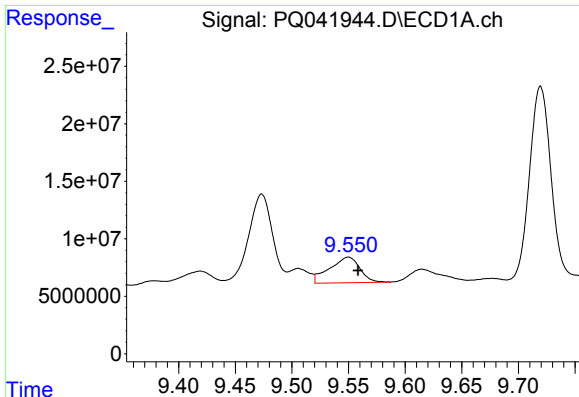
#31 AR-1260-1
 R.T.: 7.915 min
 Delta R.T.: -0.007 min
 Response: 94992436
 Conc: 523.58 ng/ml



#32 AR-1260-2
 R.T.: 9.175 min
 Delta R.T.: -0.008 min
 Response: 72278029
 Conc: 286.50 ng/ml



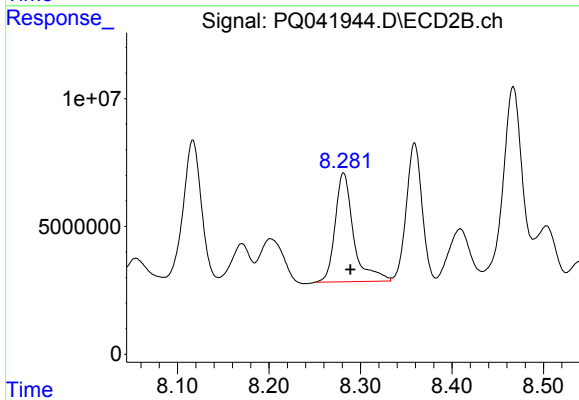
#32 AR-1260-2
 R.T.: 8.117 min
 Delta R.T.: -0.006 min
 Response: 74083526
 Conc: 301.97 ng/ml



#33 AR-1260-3

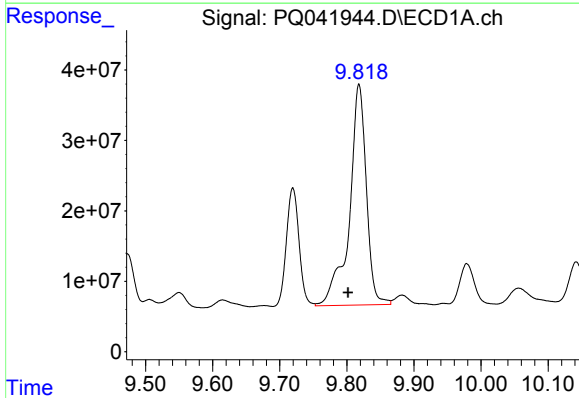
R.T.: 9.550 min
 Delta R.T.: -0.009 min
 Response: 41373364
 Conc: 180.56 ng/ml

Instrument :
 ECD_Q
 ClientSampleId :
 BENY8



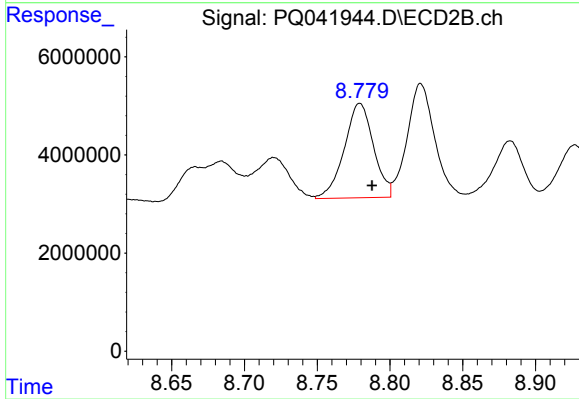
#33 AR-1260-3

R.T.: 8.282 min
 Delta R.T.: -0.007 min
 Response: 59650428
 Conc: 280.34 ng/ml



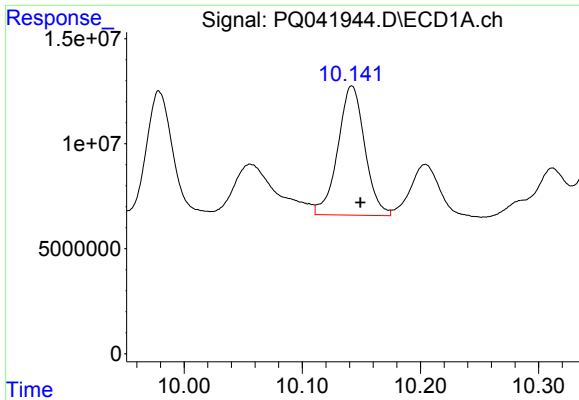
#34 AR-1260-4

R.T.: 9.818 min
 Delta R.T.: 0.017 min
 Response: 550516587
 Conc: 2155.99 ng/ml



#34 AR-1260-4

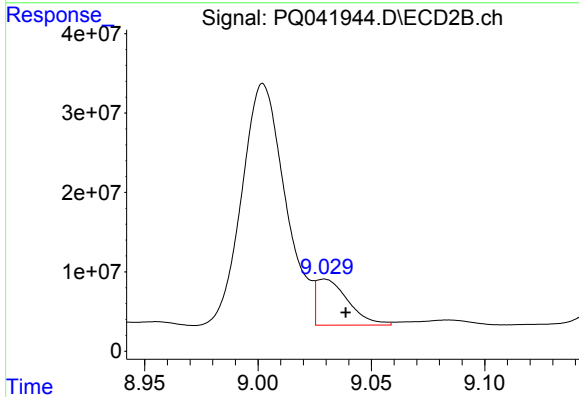
R.T.: 8.779 min
 Delta R.T.: -0.008 min
 Response: 26860497
 Conc: 132.78 ng/ml



#35 AR-1260-5

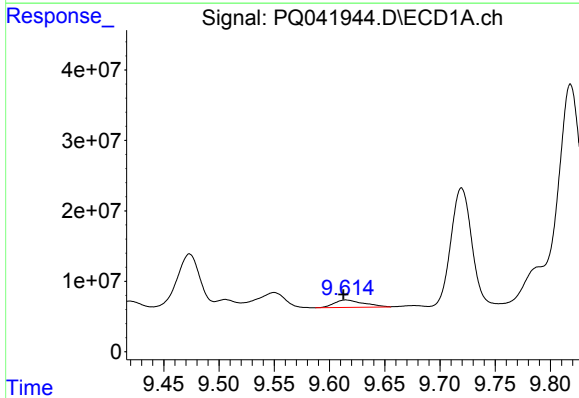
R.T.: 10.142 min
 Delta R.T.: -0.007 min
 Response: 97444010
 Conc: 144.66 ng/ml

Instrument :
 ECD_Q
 ClientSampled :
 BENY8



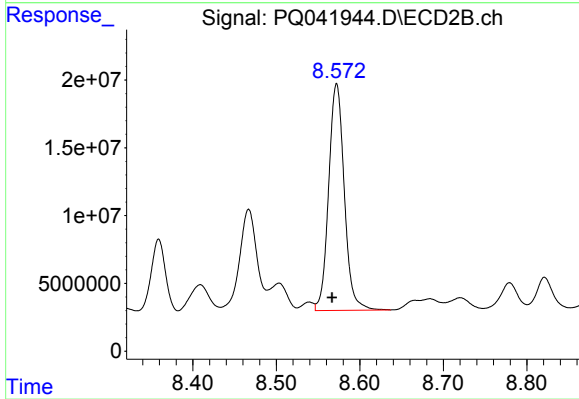
#35 AR-1260-5

R.T.: 9.029 min
 Delta R.T.: -0.009 min
 Response: 56971607
 Conc: 96.53 ng/ml



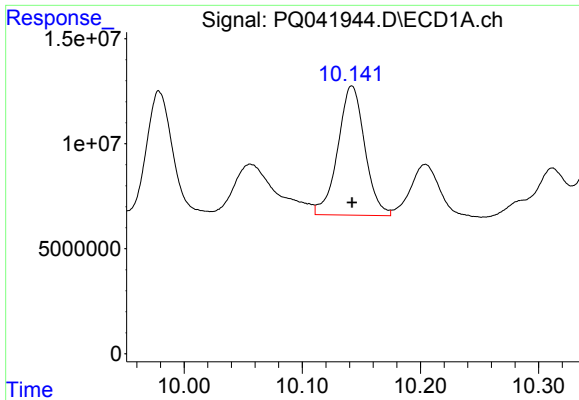
#36 AR-1262-1

R.T.: 9.615 min
 Delta R.T.: 0.002 min
 Response: 19762335
 Conc: 128.58 ng/ml



#36 AR-1262-1

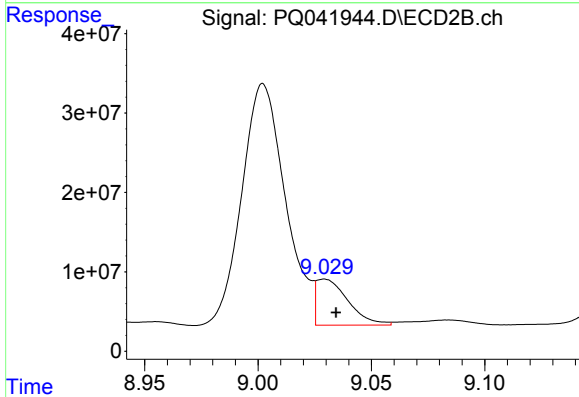
R.T.: 8.572 min
 Delta R.T.: 0.005 min
 Response: 217625011
 Conc: 1516.92 ng/ml



#37 AR-1262-2

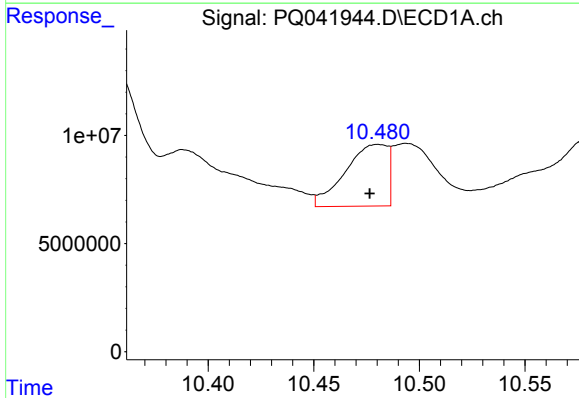
R.T.: 10.142 min
 Delta R.T.: 0.000 min
 Response: 97444010
 Conc: 111.31 ng/ml

Instrument :
 ECD_Q
 ClientSampled :
 BENY8



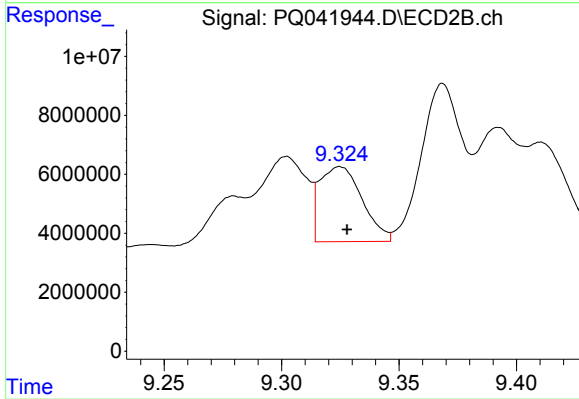
#37 AR-1262-2

R.T.: 9.029 min
 Delta R.T.: -0.005 min
 Response: 56971607
 Conc: 76.88 ng/ml



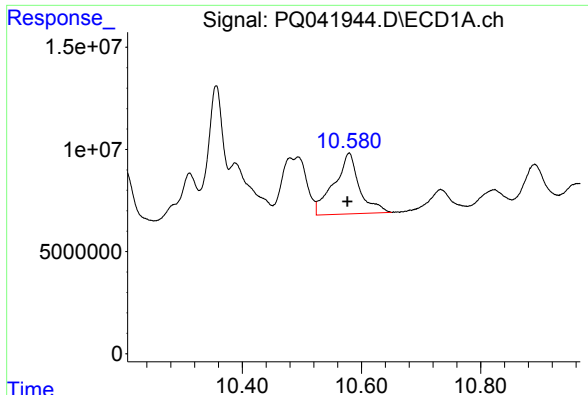
#38 AR-1262-3

R.T.: 10.480 min
 Delta R.T.: 0.004 min
 Response: 39814812
 Conc: 62.70 ng/ml



#38 AR-1262-3

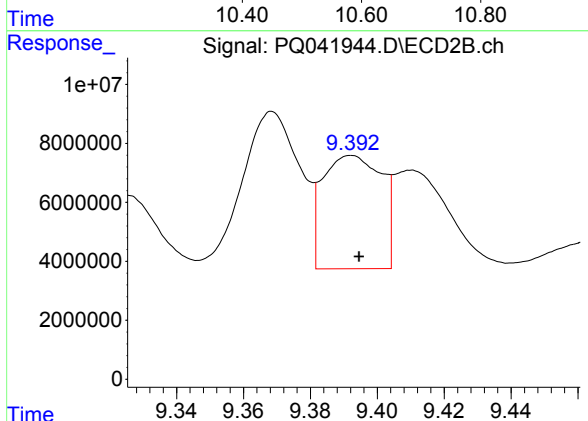
R.T.: 9.325 min
 Delta R.T.: -0.003 min
 Response: 32029838
 Conc: 101.24 ng/ml



#39 AR-1262-4

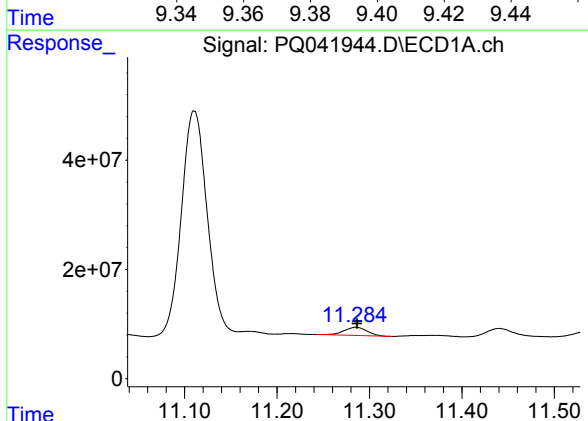
R.T.: 10.579 min
Delta R.T.: 0.003 min
Response: 88074107
Conc: 175.90 ng/ml

Instrument :
ECD_Q
ClientSampleId :
BENY8



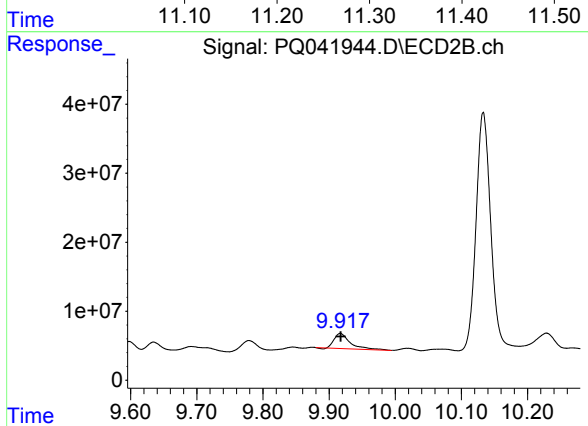
#39 AR-1262-4

R.T.: 9.392 min
Delta R.T.: -0.002 min
Response: 46847217
Conc: 83.30 ng/ml



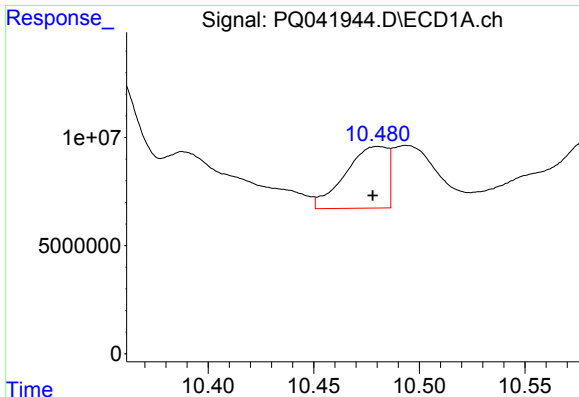
#40 AR-1262-5

R.T.: 11.285 min
Delta R.T.: -0.001 min
Response: 26189057
Conc: 64.33 ng/ml



#40 AR-1262-5

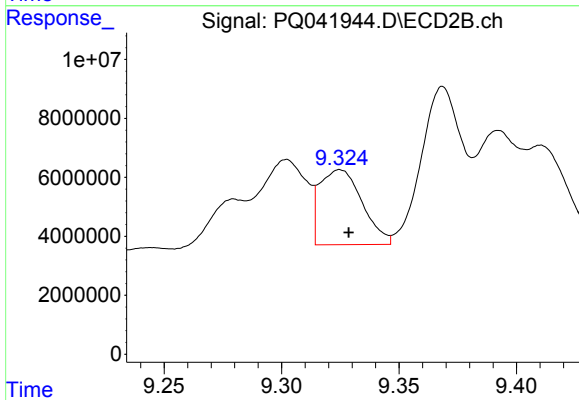
R.T.: 9.917 min
Delta R.T.: 0.000 min
Response: 37486365
Conc: 131.25 ng/ml



#41 AR-1268-1

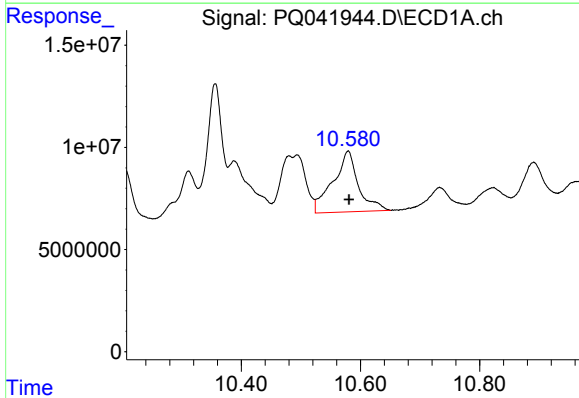
R.T.: 10.480 min
 Delta R.T.: 0.002 min
 Response: 39814812
 Conc: 27.95 ng/ml

Instrument :
 ECD_Q
 ClientSampled :
 BENY8



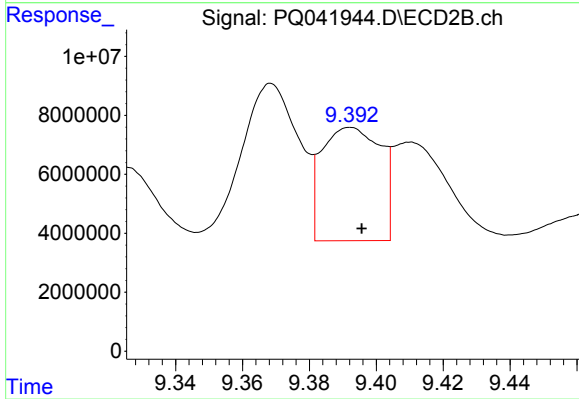
#41 AR-1268-1

R.T.: 9.325 min
 Delta R.T.: -0.004 min
 Response: 32029838
 Conc: 28.02 ng/ml



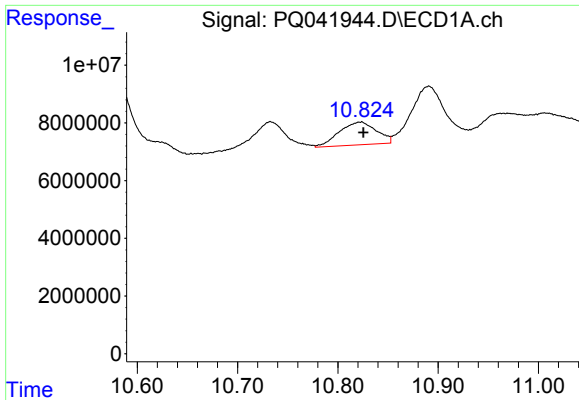
#42 AR-1268-2

R.T.: 10.579 min
 Delta R.T.: -0.002 min
 Response: 88074107
 Conc: 66.78 ng/ml



#42 AR-1268-2

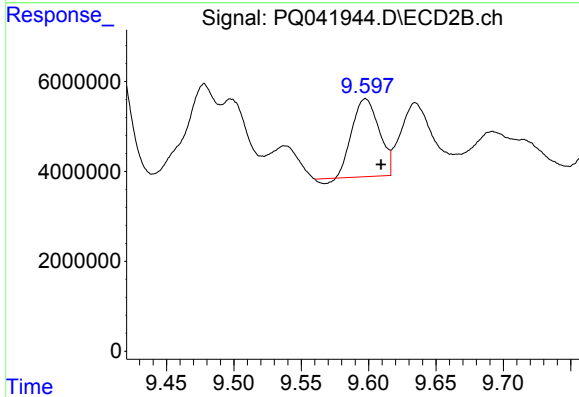
R.T.: 9.392 min
 Delta R.T.: -0.003 min
 Response: 46847217
 Conc: 45.64 ng/ml



#43 AR-1268-3

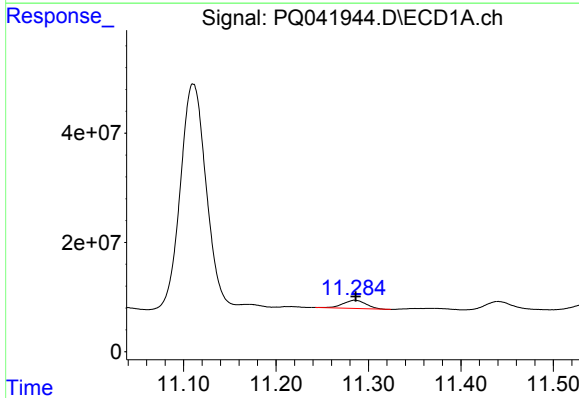
R.T.: 10.823 min
 Delta R.T.: -0.002 min
 Response: 20456932
 Conc: 17.48 ng/ml

Instrument :
 ECD_Q
 ClientSampleId :
 BENY8



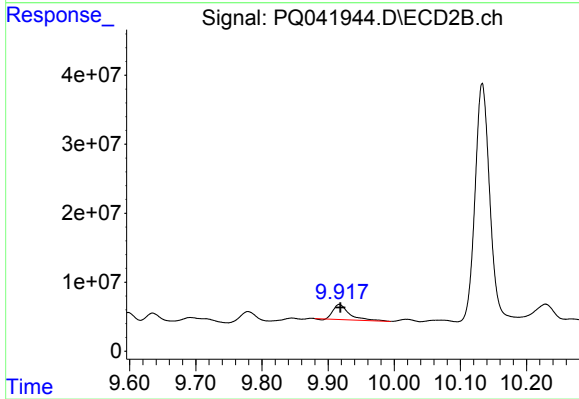
#43 AR-1268-3

R.T.: 9.598 min
 Delta R.T.: -0.012 min
 Response: 23828486
 Conc: 27.42 ng/ml



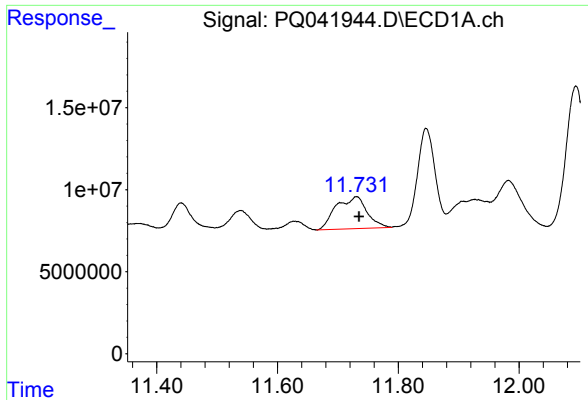
#44 AR-1268-4

R.T.: 11.285 min
 Delta R.T.: 0.000 min
 Response: 26189057
 Conc: 48.10 ng/ml



#44 AR-1268-4

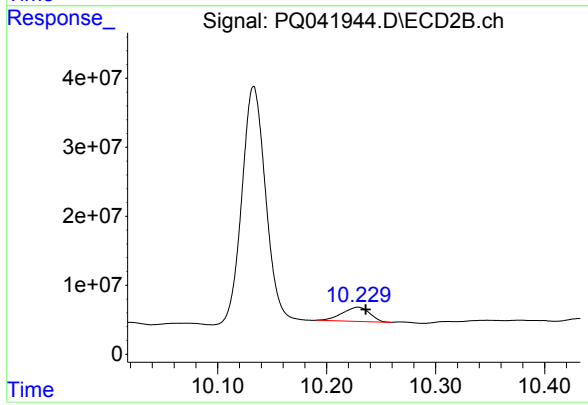
R.T.: 9.917 min
 Delta R.T.: -0.001 min
 Response: 37486365
 Conc: 97.45 ng/ml



#45 AR-1268-5

R.T.: 11.731 min
Delta R.T.: -0.004 min
Response: 69345316
Conc: 17.11 ng/ml

Instrument :
ECD_Q
ClientSampleId :
BENY8



#45 AR-1268-5

R.T.: 10.229 min
Delta R.T.: -0.007 min
Response: 36251751
Conc: 13.96 ng/ml