

Data Path : Z:\pestpcbsrv\HPCHEM1\ECD_Q\Data\PQ080123\
 Data File : PQ062807.D
 Signal(s) : Signal #1: ECD1A.ch Signal #2: ECD2B.ch
 Acq On : 01 Aug 2023 15:22
 Operator : YP\AJ
 Sample : 03844-03
 Misc :
 ALS Vial : 11 Sample Multiplier: 1

Instrument :
 ECD_Q
 ClientSampleId :

Integration File signal 1: autoint1.e
 Integration File signal 2: autoint2.e
 Quant Time: Aug 01 21:30:02 2023
 Quant Method : Z:\pestpcbsrv\HPCHEM1\ECD_Q\Method\PQ072623.M
 Quant Title : GC EXTRACTABLES
 QLast Update : Thu Jul 27 01:22:50 2023
 Response via : Initial Calibration
 Integrator: ChemStation

Volume Inj. : 2 µl
 Signal #1 Phase : ZB-MR2 Signal #2 Phase: ZB-MR2
 Signal #1 Info : 30Mx0.32mmx 0.50µ Signal #2 Info : 30M x 0.32mm x 0.25µm

Compound	RT#1	RT#2	Resp#1	Resp#2	ng/ml	ng/ml
System Monitoring Compounds						
1) SA Tetrachlo...	3.402	2.755	80285464	68443480	17.809	22.491 #
2) SA Decachlor...	8.586	7.523	66395103	39419045	17.994	12.121 #
Target Compounds						
3) L1 AR-1016-1	4.502	3.755	38389746	28343605	260.828	286.218
4) L1 AR-1016-2	4.522	3.770	61504237	44898710	270.286	303.236
5) L1 AR-1016-3	4.579	3.930	45897063	28861544	325.139	365.909
6) L1 AR-1016-4	4.671	3.980	41747498	30931658	361.491	471.615 #
7) L1 AR-1016-5	4.959	4.174	67482898	50165207	582.104	623.316
8) L2 AR-1221-1	3.597	2.958	272868	66609	4.789	1.617 #
9) L2 AR-1221-2	3.678	3.038	3598232	46869	90.740	1.532 #
10) L2 AR-1221-3	3.751	3.100	8209632	3993144	60.987	40.937 #
11) L3 AR-1232-1	3.751	3.100	8209632	3993144	72.957	50.597 #
12) L3 AR-1232-2	4.244	3.770	18367762	44898710	320.024	645.563 #
13) L3 AR-1232-3	4.522	3.930	61504237	28861544	602.463	816.480 #
14) L3 AR-1232-4	4.671	4.017	41747498	34777680	805.913	1154.343 #
15) L3 AR-1232-5	4.769	4.174	41716873	50165207	1098.031	1355.208
16) L4 AR-1242-1	4.502	3.755	38389746	28343605	297.507	316.364
17) L4 AR-1242-2	4.522	3.770	61504237	44898710	305.613	340.840
18) L4 AR-1242-3	4.579	3.930	45897063	28861544	364.229	414.324
19) L4 AR-1242-4	4.671	4.017	41747498	34777680	403.328	541.374 #
20) L4 AR-1242-5	5.387	4.512	163.3E6	123.5E6	1455.561	1502.061
21) L5 AR-1248-1	4.502	3.755	38389746	28343605	391.888	423.114
22) L5 AR-1248-2	4.769	3.980	41716873	30931658	303.313	329.599
23) L5 AR-1248-3	4.959	4.017	67482898	34777680	402.245	388.313
24) L5 AR-1248-4	5.353	4.174	159.6E6	50165207	839.236	452.507 #
25) L5 AR-1248-5	5.387	4.548	163.3E6	108.8E6	872.249	979.049
26) L6 AR-1254-1	5.324	4.512	99535579	123.5E6	514.220	744.851 #
27) L6 AR-1254-2	5.539	4.658	167.3E6	35427187	545.869	244.683 #
28) L6 AR-1254-3	5.896	5.038	74529074	54107839	227.911	238.505
29) L6 AR-1254-4	6.181	5.265	32532647	23459578	133.653	158.486
30) L6 AR-1254-5	6.594	5.669	12053163	10588555	46.187	50.611
31) L7 AR-1260-1	6.062	5.170	11323419	24111968	48.913	156.480 #
32) L7 AR-1260-2	6.322	5.358	8800446	7214705	31.325	38.491
33) L7 AR-1260-3	6.676	5.496	3718594	7474509	18.488	41.924 #
34) L7 AR-1260-4	6.894	5.960	3961980	3279048	17.243	22.007 #
35) L7 AR-1260-5	7.206	6.207	6505589	5194743	14.109	15.430
36) L8 AR-1262-1	6.676	5.714	3718594	3215928	12.033	14.971
37) L8 AR-1262-2	7.206	5.960	6505589	3279048	11.989	16.558 #
38) L8 AR-1262-3	7.483	6.484	4299358	1830813	11.795	11.223
39) L8 AR-1262-4	7.556	6.543	1898623	3218476	6.803	10.739 #
40) L8 AR-1262-5	8.060	7.040	2093622	1144545	11.222	7.607 #
41) L9 AR-1268-1	7.483	6.484	4299358	1830813	6.772	3.861 #

Data Path : Z:\pestpcbsrv\HPCHEM1\ECD_Q\Data\PQ080123\
 Data File : PQ062807.D
 Signal(s) : Signal #1: ECD1A.ch Signal #2: ECD2B.ch
 Acq On : 01 Aug 2023 15:22
 Operator : YP\AJ
 Sample : 03844-03
 Misc :
 ALS Vial : 11 Sample Multiplier: 1

Instrument :
 ECD_Q
 ClientSampleId :

Integration File signal 1: autoint1.e
 Integration File signal 2: autoint2.e
 Quant Time: Aug 01 21:30:02 2023
 Quant Method : Z:\pestpcbsrv\HPCHEM1\ECD_Q\Method\PQ072623.M
 Quant Title : GC EXTRACTABLES
 QLast Update : Thu Jul 27 01:22:50 2023
 Response via : Initial Calibration
 Integrator: ChemStation

Volume Inj. : 2 µl
 Signal #1 Phase : ZB-MR1 Signal #2 Phase: ZB-MR2
 Signal #1 Info : 30Mx0.32mmx 0.50µ Signal #2 Info : 30M x 0.32mm x 0.25µm

	Compound	RT#1	RT#2	Resp#1	Resp#2	ng/ml	ng/ml
42)	L9 AR-1268-2	7.556	6.543	1898623	3218476	3.291	7.437 #
43)	L9 AR-1268-3	7.745	6.758	788836	639628	1.633	1.682
44)	L9 AR-1268-4	8.060	7.040	2093622	1144545	9.938	6.876 #
45)	L9 AR-1268-5	8.351	7.315	686810	14187593	0.476	11.523 #

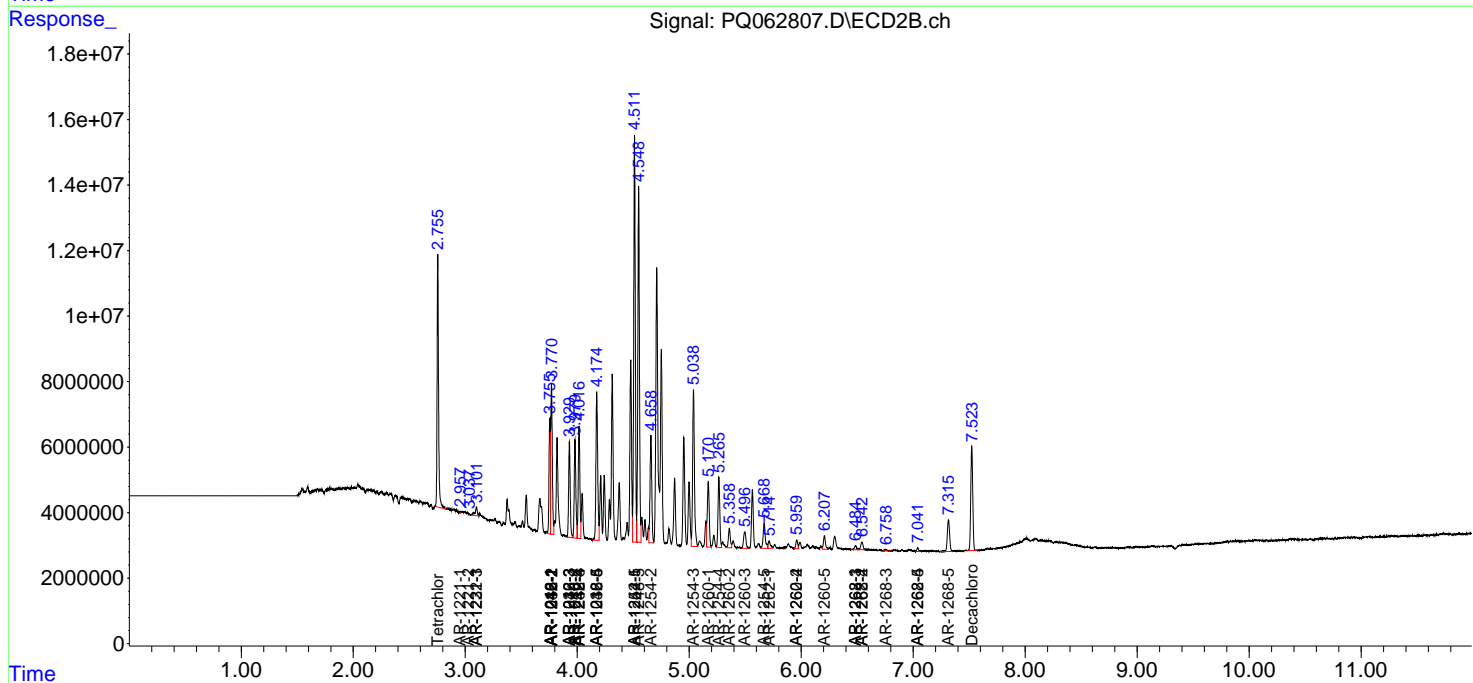
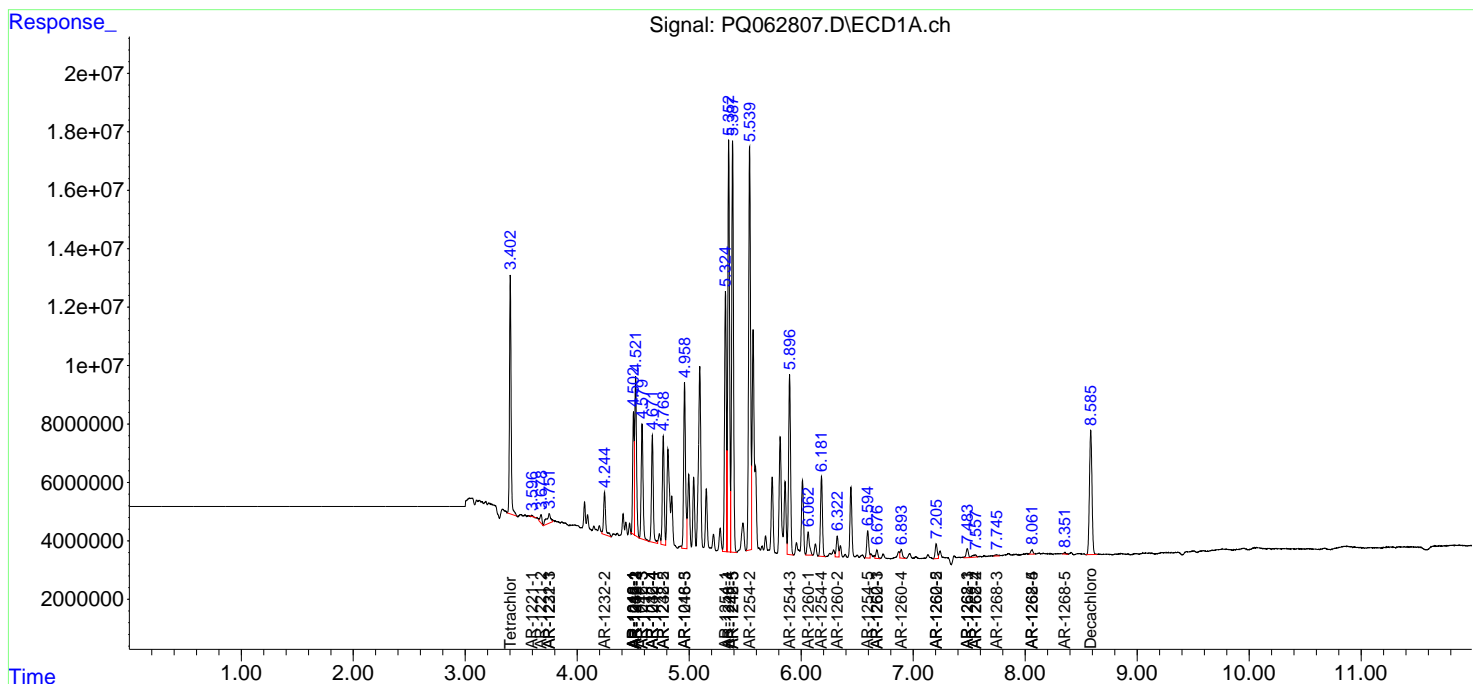
(f)=RT Delta > 1/2 Window (#)=Amounts differ by > 25% (m)=manual int.

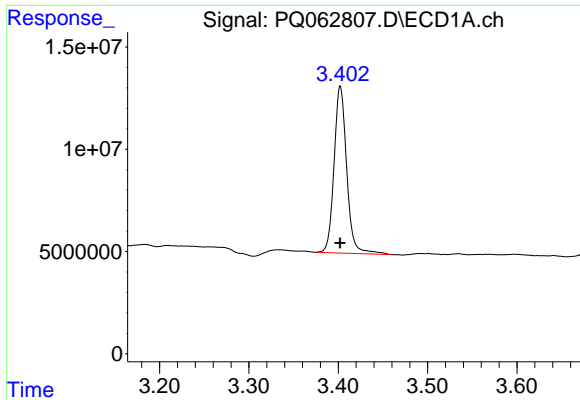
Data Path : Z:\pestpcbsrv\HPCHEM1\ECD_Q\Data\PQ080123\
 Data File : PQ062807.D
 Signal(s) : Signal #1: ECD1A.ch Signal #2: ECD2B.ch
 Acq On : 01 Aug 2023 15:22
 Operator : YP\AJ
 Sample : 03844-03
 Misc :
 ALS Vial : 11 Sample Multiplier: 1

Instrument :
 ECD_Q
 ClientSampleId :

Integration File signal 1: autoint1.e
 Integration File signal 2: autoint2.e
 Quant Time: Aug 01 21:30:02 2023
 Quant Method : Z:\pestpcbsrv\HPCHEM1\ECD_Q\Method\PQ072623.M
 Quant Title : GC EXTRACTABLES
 QLast Update : Thu Jul 27 01:22:50 2023
 Response via : Initial Calibration
 Integrator: ChemStation

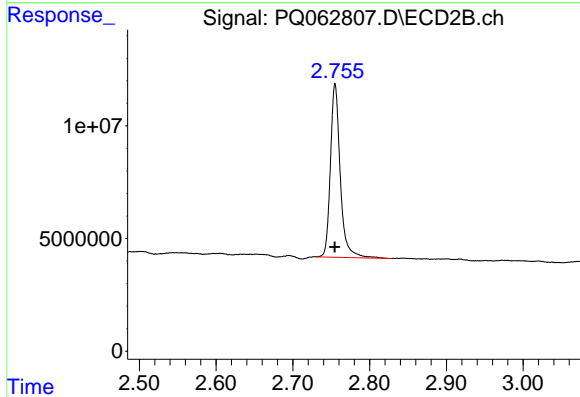
Volume Inj. : 2 µl
 Signal #1 Phase : ZB-MR1 Signal #2 Phase: ZB-MR2
 Signal #1 Info : 30Mx0.32mmx 0.50µ Signal #2 Info : 30M x 0.32mm x 0.25µm



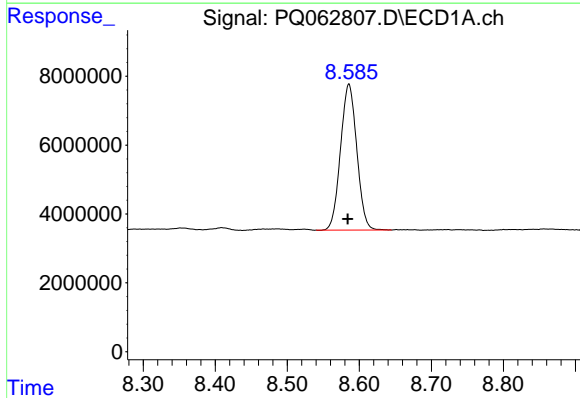


#1 Tetrachloro-m-xylene
 R.T.: 3.402 min
 Delta R.T.: 0.000 min
 Response: 80285464
 Conc: 17.81 ng/ml

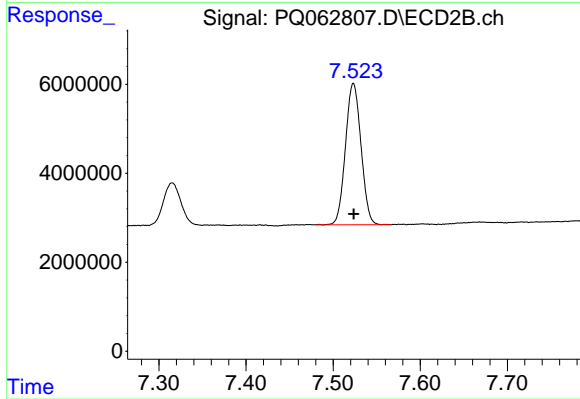
Instrument :
 ECD_Q
 ClientSampleId :



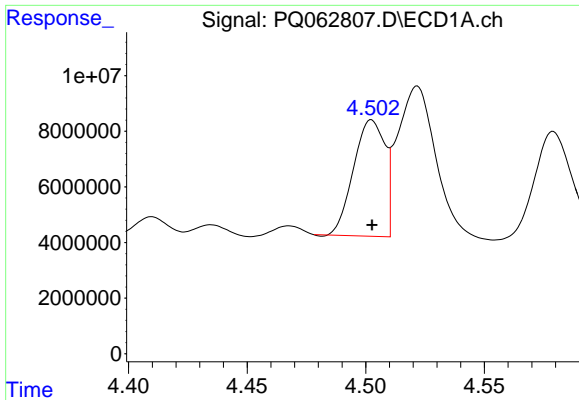
#1 Tetrachloro-m-xylene
 R.T.: 2.755 min
 Delta R.T.: 0.000 min
 Response: 68443480
 Conc: 22.49 ng/ml



#2 Decachlorobiphenyl
 R.T.: 8.586 min
 Delta R.T.: 0.002 min
 Response: 66395103
 Conc: 17.99 ng/ml



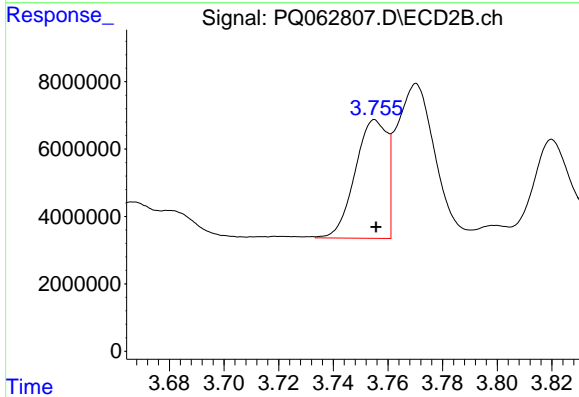
#2 Decachlorobiphenyl
 R.T.: 7.523 min
 Delta R.T.: 0.000 min
 Response: 39419045
 Conc: 12.12 ng/ml



#3 AR-1016-1

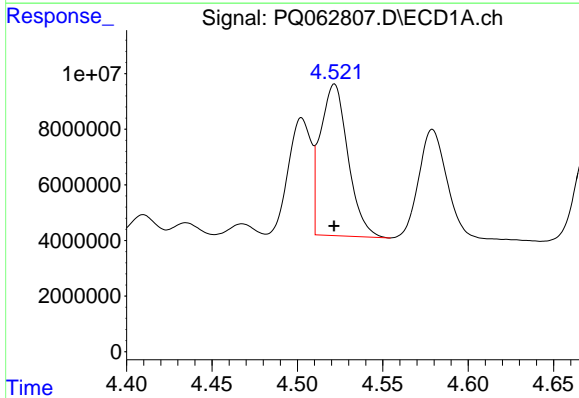
R.T.: 4.502 min
 Delta R.T.: 0.000 min
 Response: 38389746
 Conc: 260.83 ng/ml

Instrument :
 ECD_Q
 ClientSampleId :



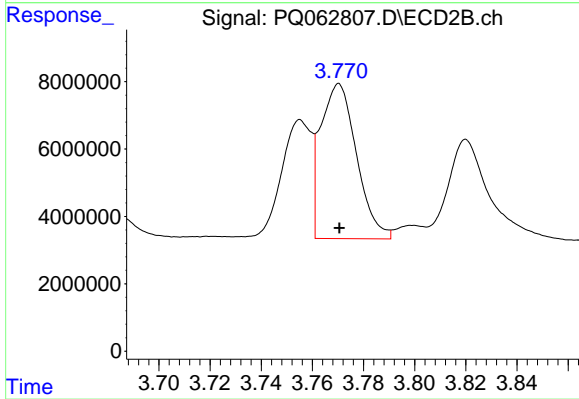
#3 AR-1016-1

R.T.: 3.755 min
 Delta R.T.: 0.000 min
 Response: 28343605
 Conc: 286.22 ng/ml



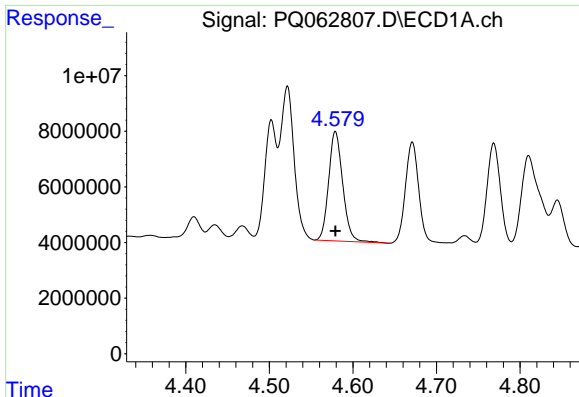
#4 AR-1016-2

R.T.: 4.522 min
 Delta R.T.: 0.000 min
 Response: 61504237
 Conc: 270.29 ng/ml



#4 AR-1016-2

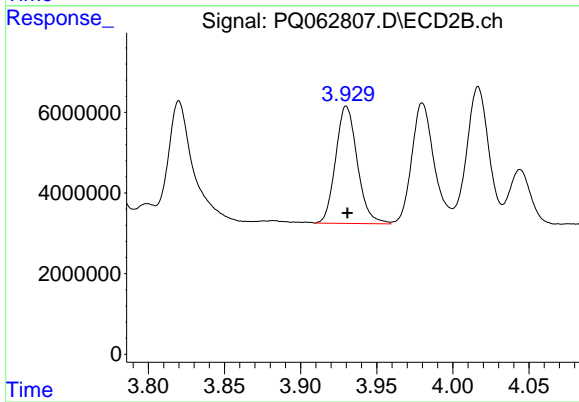
R.T.: 3.770 min
 Delta R.T.: 0.000 min
 Response: 44898710
 Conc: 303.24 ng/ml



#5 AR-1016-3

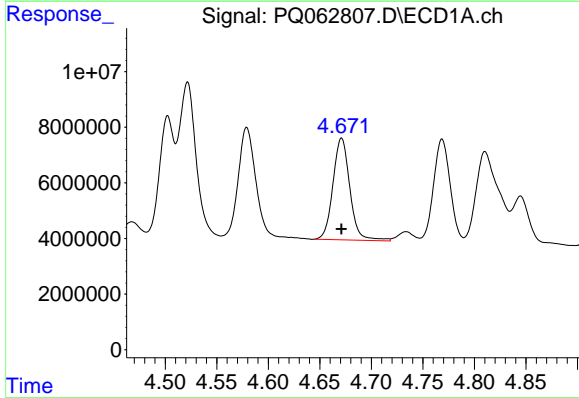
R.T.: 4.579 min
 Delta R.T.: 0.000 min
 Response: 45897063
 Conc: 325.14 ng/ml

Instrument :
 ECD_Q
 ClientSampleId :



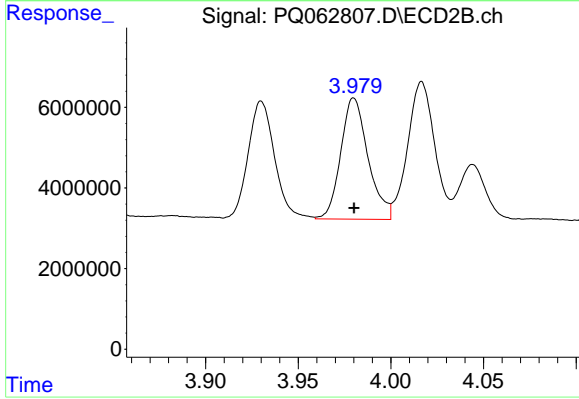
#5 AR-1016-3

R.T.: 3.930 min
 Delta R.T.: 0.000 min
 Response: 28861544
 Conc: 365.91 ng/ml



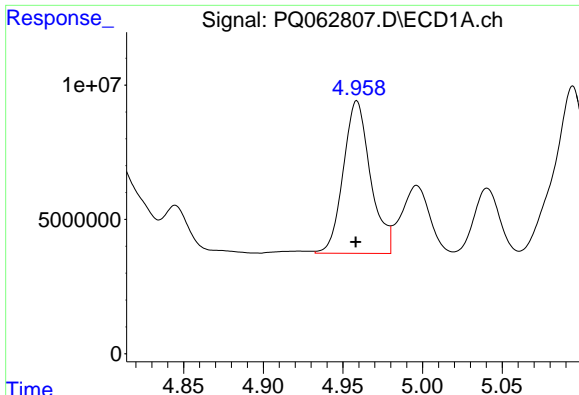
#6 AR-1016-4

R.T.: 4.671 min
 Delta R.T.: 0.000 min
 Response: 41747498
 Conc: 361.49 ng/ml



#6 AR-1016-4

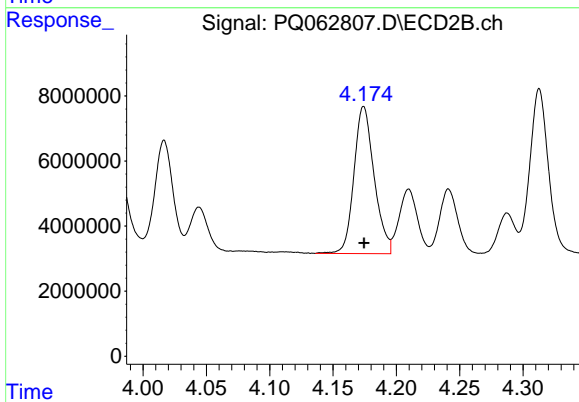
R.T.: 3.980 min
 Delta R.T.: 0.000 min
 Response: 30931658
 Conc: 471.61 ng/ml



#7 AR-1016-5

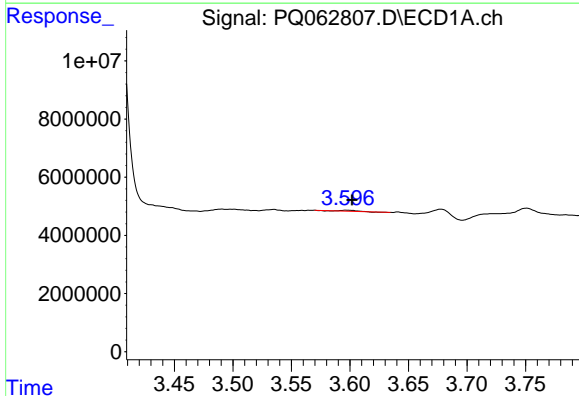
R.T.: 4.959 min
 Delta R.T.: 0.000 min
 Response: 67482898
 Conc: 582.10 ng/ml

Instrument :
 ECD_Q
 ClientSampleId :



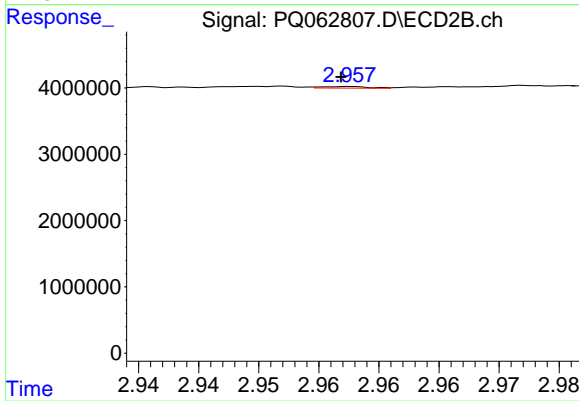
#7 AR-1016-5

R.T.: 4.174 min
 Delta R.T.: 0.000 min
 Response: 50165207
 Conc: 623.32 ng/ml



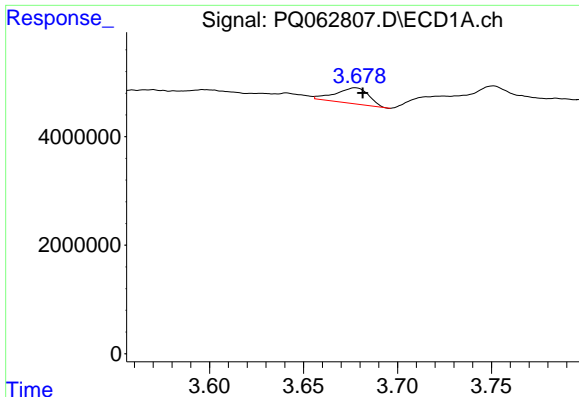
#8 AR-1221-1

R.T.: 3.597 min
 Delta R.T.: -0.005 min
 Response: 272868
 Conc: 4.79 ng/ml



#8 AR-1221-1

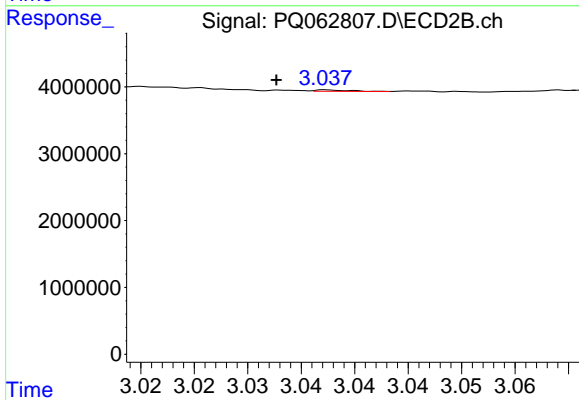
R.T.: 2.958 min
 Delta R.T.: 0.000 min
 Response: 66609
 Conc: 1.62 ng/ml



#9 AR-1221-2

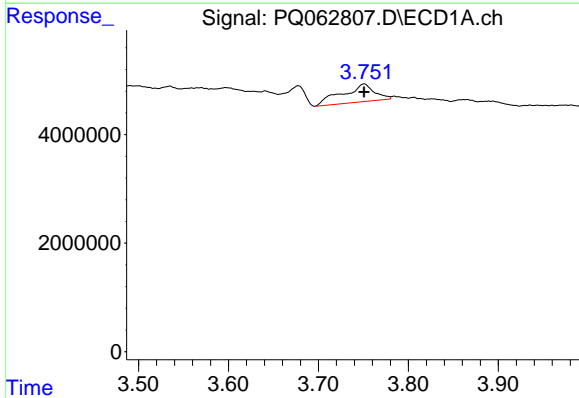
R.T.: 3.678 min
 Delta R.T.: -0.004 min
 Response: 3598232
 Conc: 90.74 ng/ml

Instrument :
 ECD_Q
 ClientSampleId :



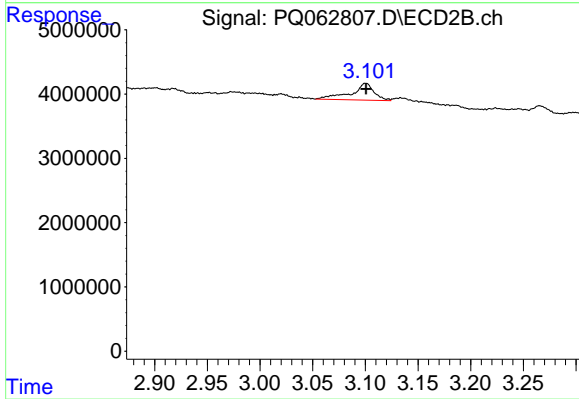
#9 AR-1221-2

R.T.: 3.038 min
 Delta R.T.: 0.005 min
 Response: 46869
 Conc: 1.53 ng/ml



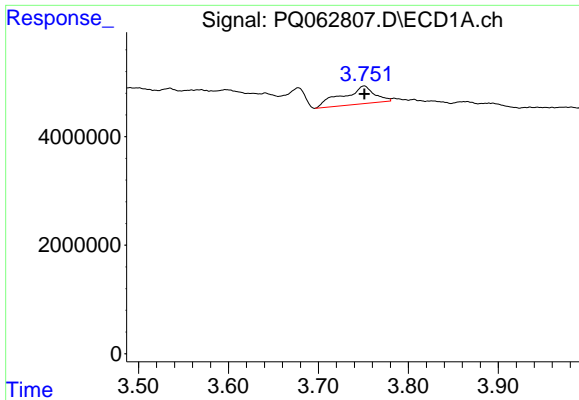
#10 AR-1221-3

R.T.: 3.751 min
 Delta R.T.: 0.000 min
 Response: 8209632
 Conc: 60.99 ng/ml



#10 AR-1221-3

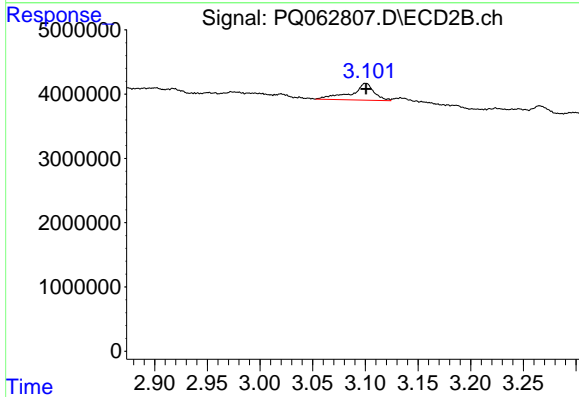
R.T.: 3.100 min
 Delta R.T.: 0.000 min
 Response: 3993144
 Conc: 40.94 ng/ml



#11 AR-1232-1

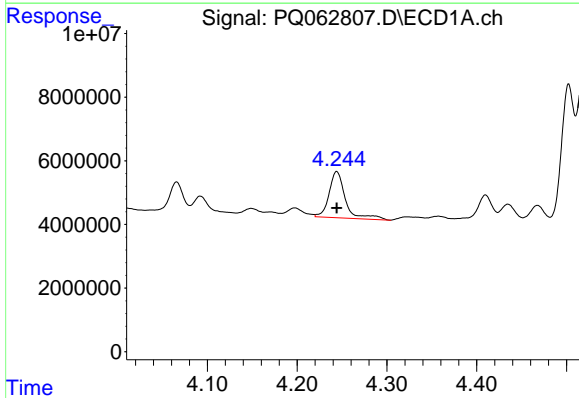
R.T.: 3.751 min
 Delta R.T.: 0.000 min
 Response: 8209632
 Conc: 72.96 ng/ml

Instrument :
 ECD_Q
 ClientSampleId :



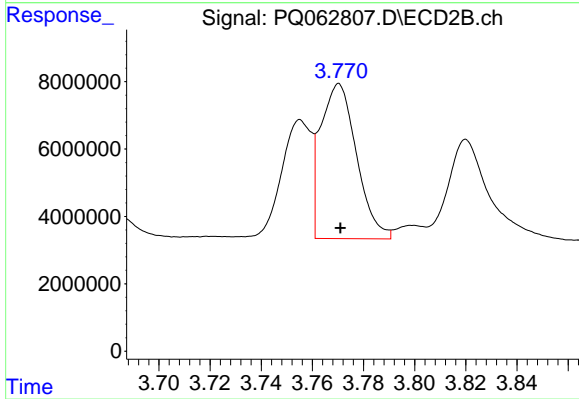
#11 AR-1232-1

R.T.: 3.100 min
 Delta R.T.: 0.000 min
 Response: 3993144
 Conc: 50.60 ng/ml



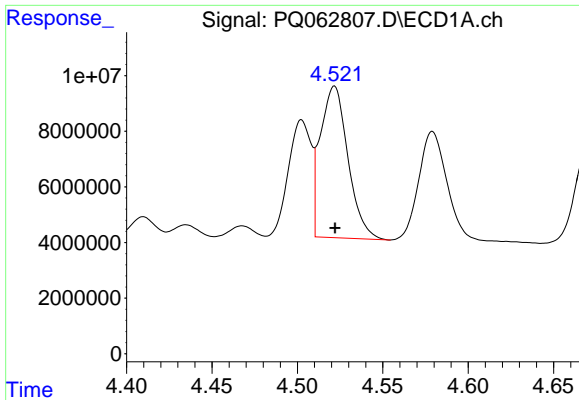
#12 AR-1232-2

R.T.: 4.244 min
 Delta R.T.: 0.000 min
 Response: 18367762
 Conc: 320.02 ng/ml



#12 AR-1232-2

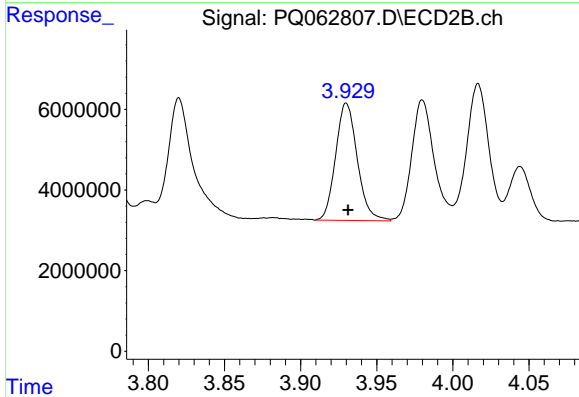
R.T.: 3.770 min
 Delta R.T.: 0.000 min
 Response: 44898710
 Conc: 645.56 ng/ml



#13 AR-1232-3

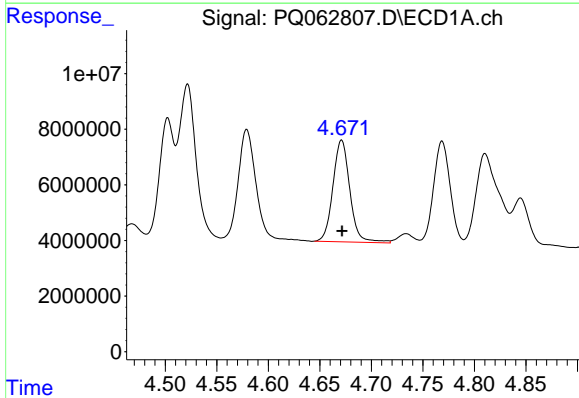
R.T.: 4.522 min
 Delta R.T.: 0.000 min
 Response: 61504237
 Conc: 602.46 ng/ml

Instrument :
 ECD_Q
 ClientSampleId :



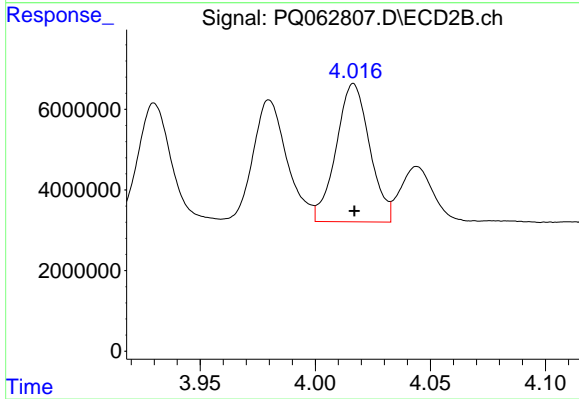
#13 AR-1232-3

R.T.: 3.930 min
 Delta R.T.: -0.001 min
 Response: 28861544
 Conc: 816.48 ng/ml



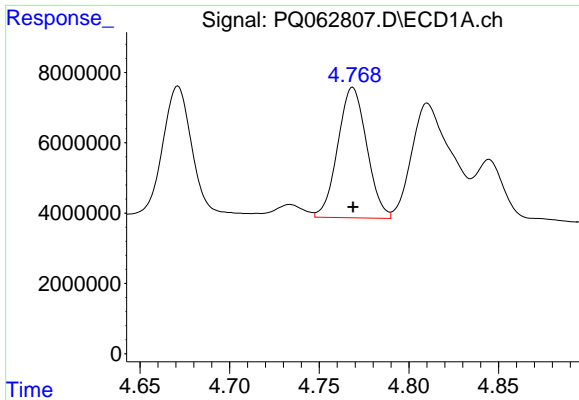
#14 AR-1232-4

R.T.: 4.671 min
 Delta R.T.: 0.000 min
 Response: 41747498
 Conc: 805.91 ng/ml



#14 AR-1232-4

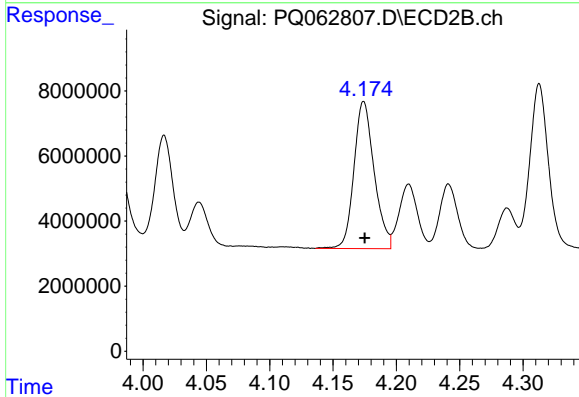
R.T.: 4.017 min
 Delta R.T.: 0.000 min
 Response: 34777680
 Conc: 1154.34 ng/ml



#15 AR-1232-5

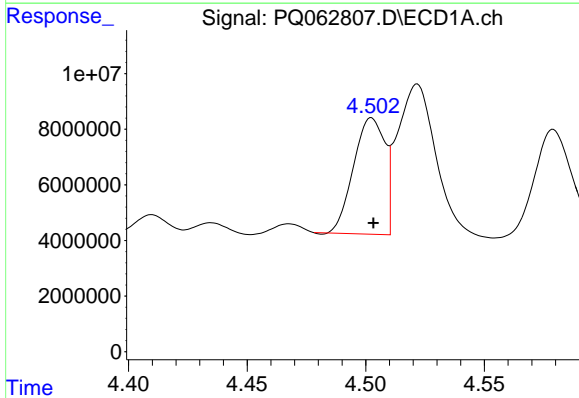
R.T.: 4.769 min
 Delta R.T.: 0.000 min
 Response: 41716873
 Conc: 1098.03 ng/ml

Instrument :
 ECD_Q
 ClientSampleId :



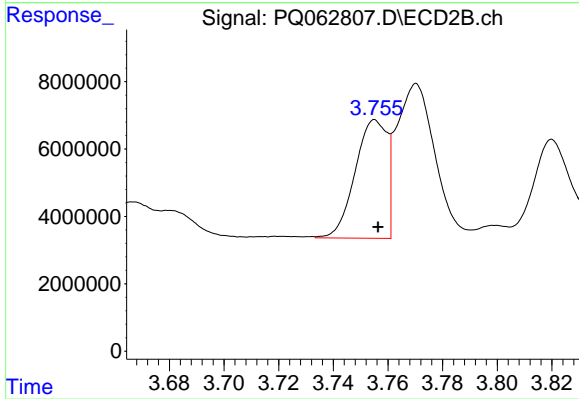
#15 AR-1232-5

R.T.: 4.174 min
 Delta R.T.: 0.000 min
 Response: 50165207
 Conc: 1355.21 ng/ml



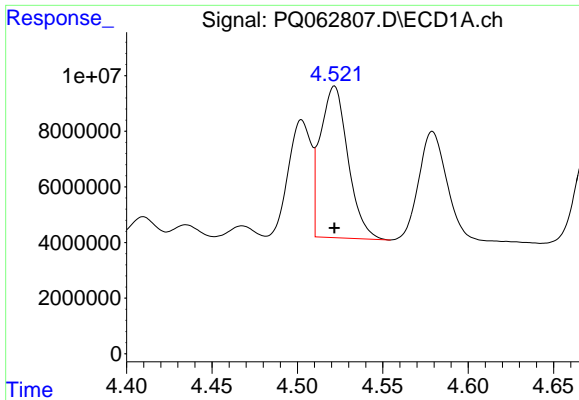
#16 AR-1242-1

R.T.: 4.502 min
 Delta R.T.: 0.000 min
 Response: 38389746
 Conc: 297.51 ng/ml



#16 AR-1242-1

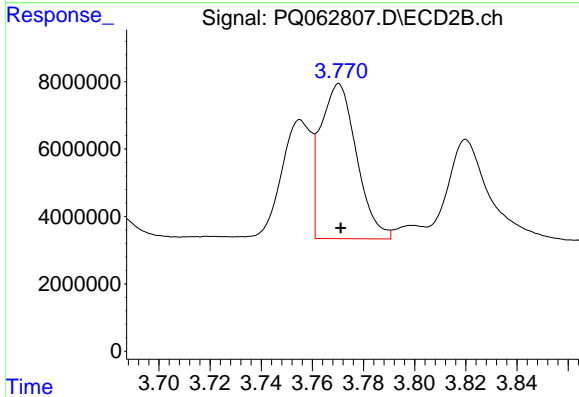
R.T.: 3.755 min
 Delta R.T.: -0.001 min
 Response: 28343605
 Conc: 316.36 ng/ml



#17 AR-1242-2

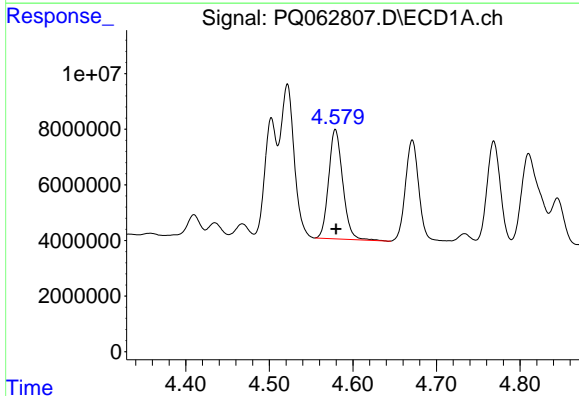
R.T.: 4.522 min
 Delta R.T.: 0.000 min
 Response: 61504237
 Conc: 305.61 ng/ml

Instrument :
 ECD_Q
 ClientSampleId :



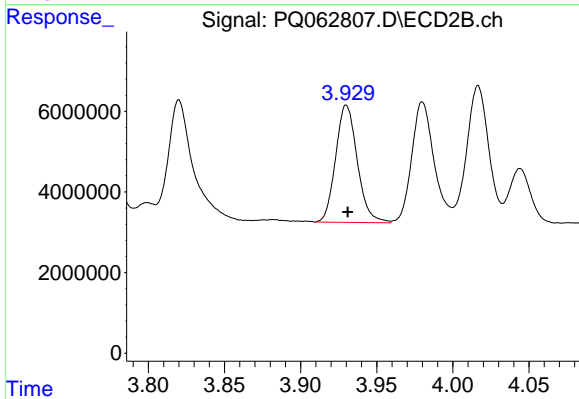
#17 AR-1242-2

R.T.: 3.770 min
 Delta R.T.: 0.000 min
 Response: 44898710
 Conc: 340.84 ng/ml



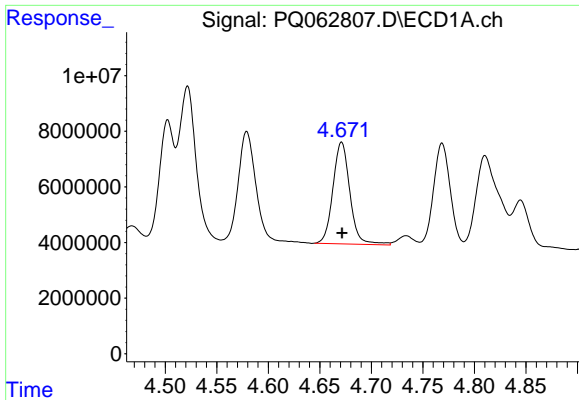
#18 AR-1242-3

R.T.: 4.579 min
 Delta R.T.: 0.000 min
 Response: 45897063
 Conc: 364.23 ng/ml



#18 AR-1242-3

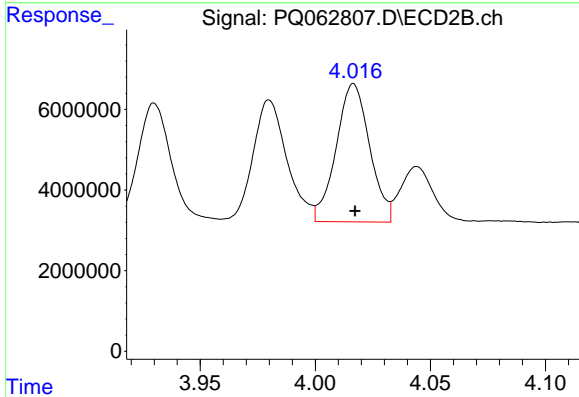
R.T.: 3.930 min
 Delta R.T.: -0.001 min
 Response: 28861544
 Conc: 414.32 ng/ml



#19 AR-1242-4

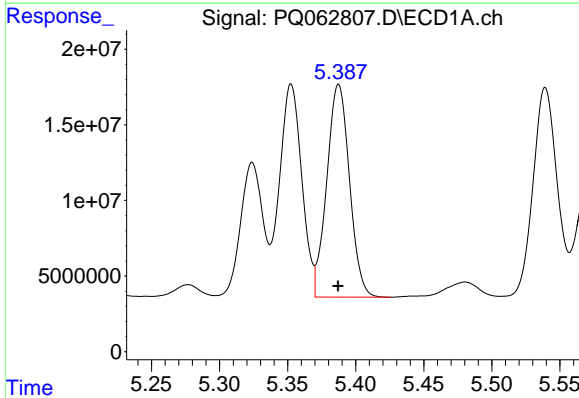
R.T.: 4.671 min
 Delta R.T.: 0.000 min
 Response: 41747498
 Conc: 403.33 ng/ml

Instrument :
 ECD_Q
 ClientSampleId :



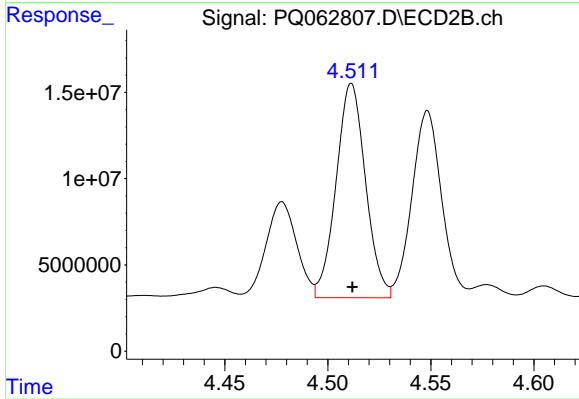
#19 AR-1242-4

R.T.: 4.017 min
 Delta R.T.: 0.000 min
 Response: 34777680
 Conc: 541.37 ng/ml



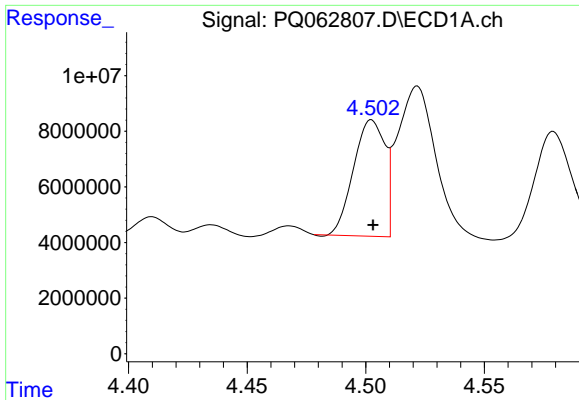
#20 AR-1242-5

R.T.: 5.387 min
 Delta R.T.: 0.000 min
 Response: 163307584
 Conc: 1455.56 ng/ml



#20 AR-1242-5

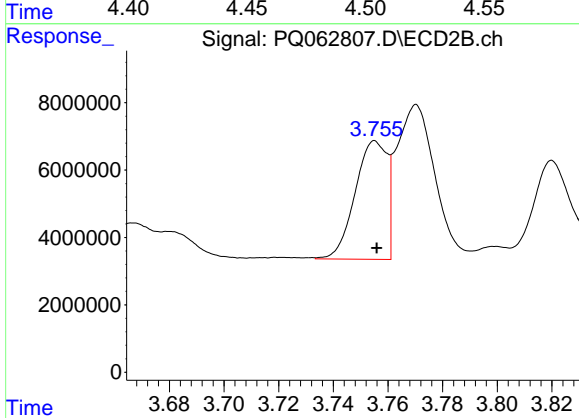
R.T.: 4.512 min
 Delta R.T.: 0.000 min
 Response: 123474991
 Conc: 1502.06 ng/ml



#21 AR-1248-1

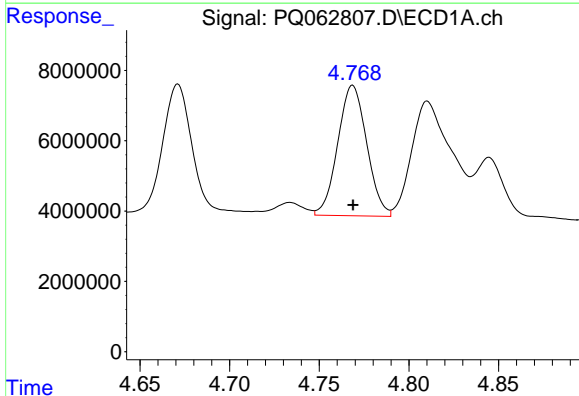
R.T.: 4.502 min
 Delta R.T.: 0.000 min
 Response: 38389746
 Conc: 391.89 ng/ml

Instrument :
 ECD_Q
 ClientSampleId :



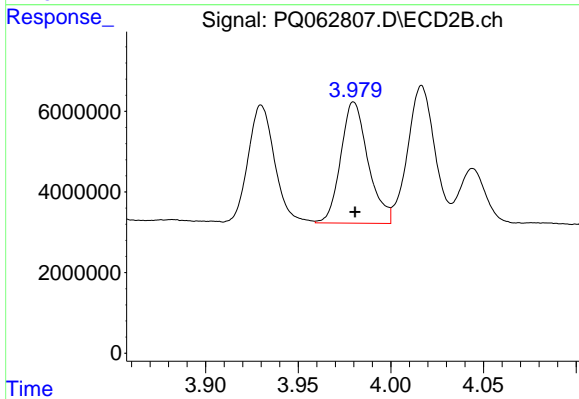
#21 AR-1248-1

R.T.: 3.755 min
 Delta R.T.: 0.000 min
 Response: 28343605
 Conc: 423.11 ng/ml



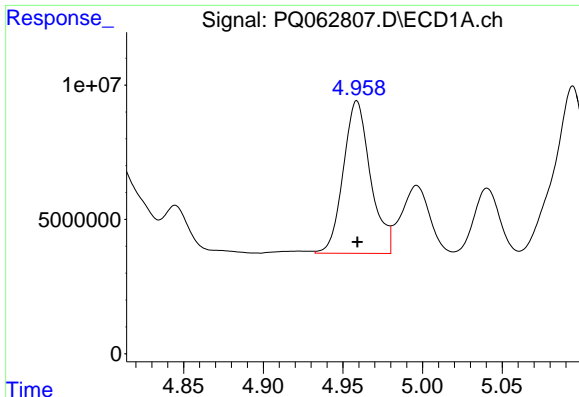
#22 AR-1248-2

R.T.: 4.769 min
 Delta R.T.: 0.000 min
 Response: 41716873
 Conc: 303.31 ng/ml



#22 AR-1248-2

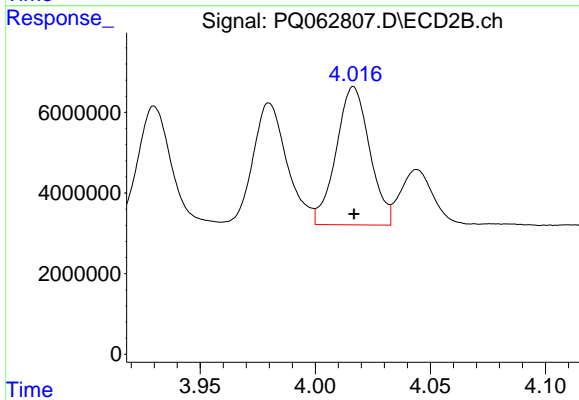
R.T.: 3.980 min
 Delta R.T.: 0.000 min
 Response: 30931658
 Conc: 329.60 ng/ml



#23 AR-1248-3

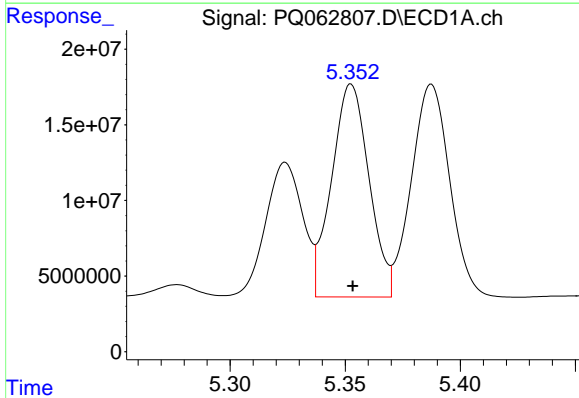
R.T.: 4.959 min
 Delta R.T.: 0.000 min
 Response: 67482898
 Conc: 402.25 ng/ml

Instrument :
 ECD_Q
 ClientSampleId :



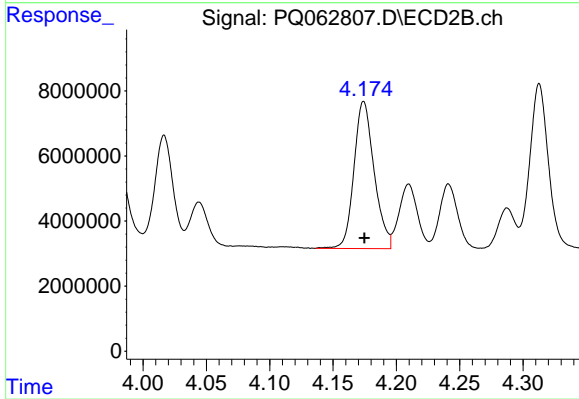
#23 AR-1248-3

R.T.: 4.017 min
 Delta R.T.: 0.000 min
 Response: 34777680
 Conc: 388.31 ng/ml



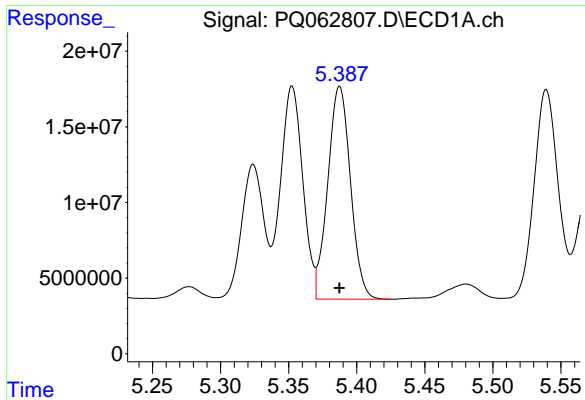
#24 AR-1248-4

R.T.: 5.353 min
 Delta R.T.: 0.000 min
 Response: 159619140
 Conc: 839.24 ng/ml



#24 AR-1248-4

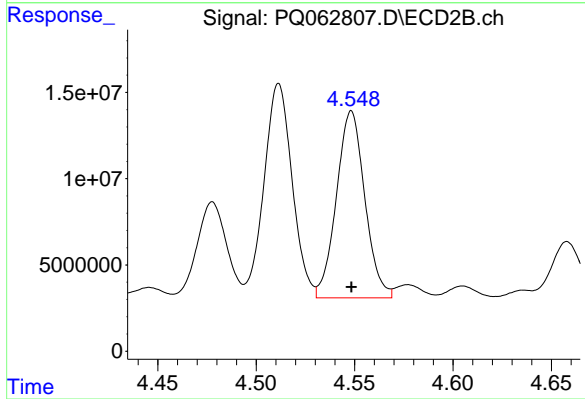
R.T.: 4.174 min
 Delta R.T.: 0.000 min
 Response: 50165207
 Conc: 452.51 ng/ml



#25 AR-1248-5

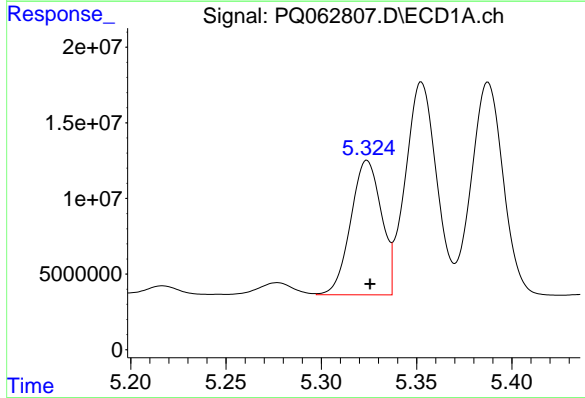
R.T.: 5.387 min
 Delta R.T.: 0.000 min
 Response: 163307584
 Conc: 872.25 ng/ml

Instrument :
 ECD_Q
 ClientSampleId :



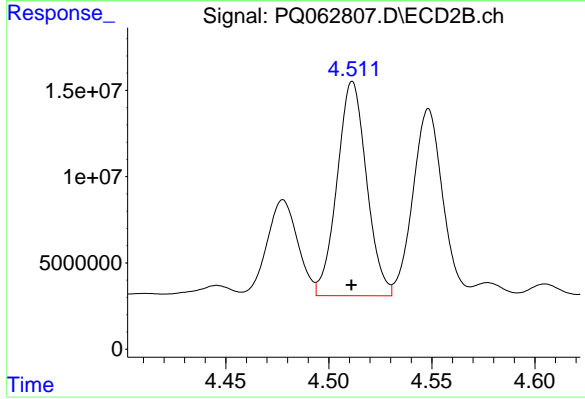
#25 AR-1248-5

R.T.: 4.548 min
 Delta R.T.: 0.000 min
 Response: 108776727
 Conc: 979.05 ng/ml



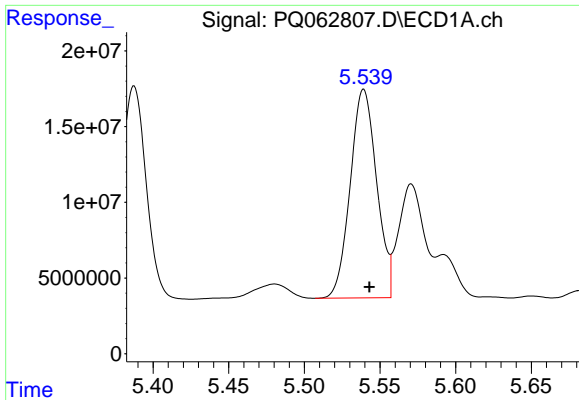
#26 AR-1254-1

R.T.: 5.324 min
 Delta R.T.: -0.002 min
 Response: 99535579
 Conc: 514.22 ng/ml



#26 AR-1254-1

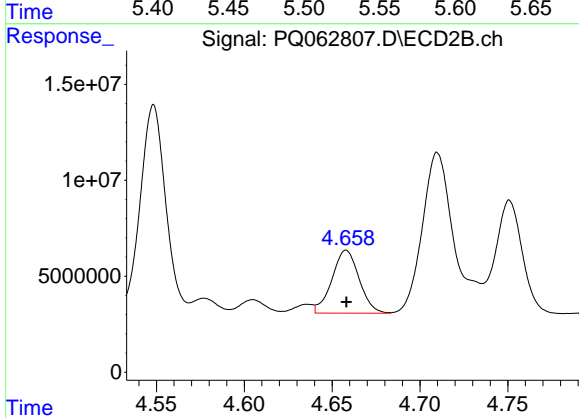
R.T.: 4.512 min
 Delta R.T.: 0.000 min
 Response: 123474991
 Conc: 744.85 ng/ml



#27 AR-1254-2

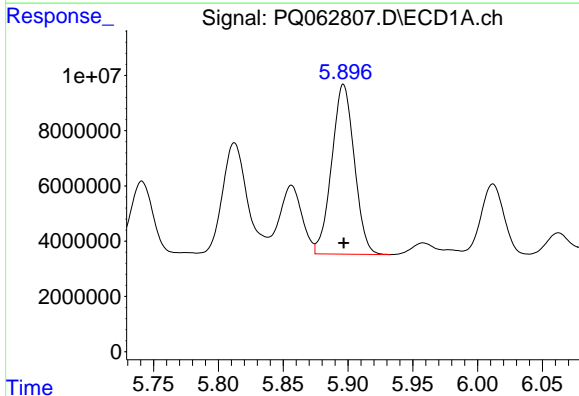
R.T.: 5.539 min
 Delta R.T.: -0.004 min
 Response: 167294789
 Conc: 545.87 ng/ml

Instrument :
 ECD_Q
 ClientSampleId :



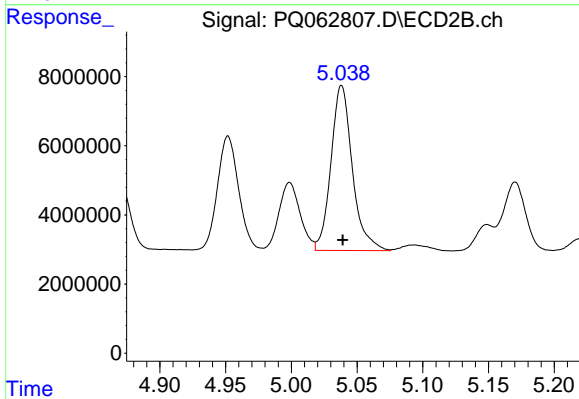
#27 AR-1254-2

R.T.: 4.658 min
 Delta R.T.: 0.000 min
 Response: 35427187
 Conc: 244.68 ng/ml



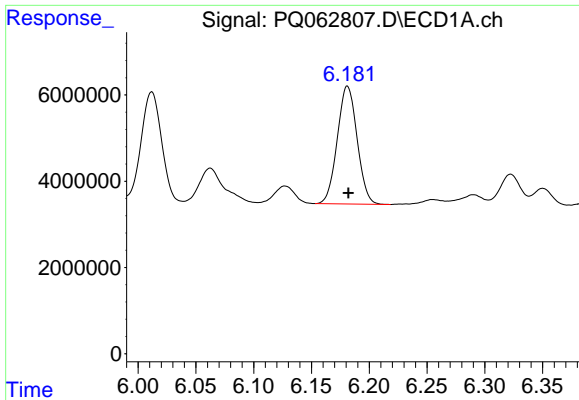
#28 AR-1254-3

R.T.: 5.896 min
 Delta R.T.: 0.000 min
 Response: 74529074
 Conc: 227.91 ng/ml



#28 AR-1254-3

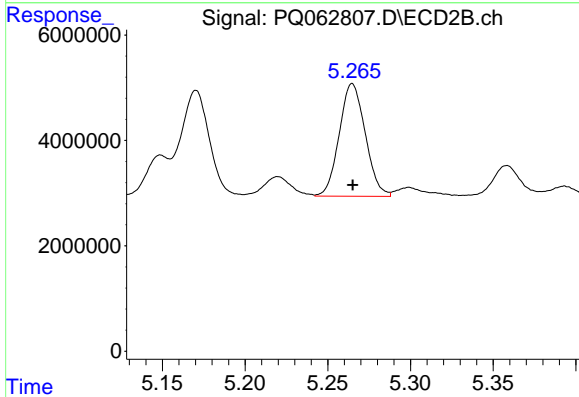
R.T.: 5.038 min
 Delta R.T.: 0.000 min
 Response: 54107839
 Conc: 238.51 ng/ml



#29 AR-1254-4

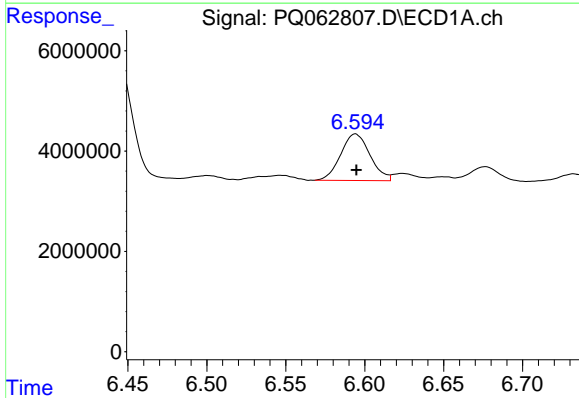
R.T.: 6.181 min
 Delta R.T.: 0.000 min
 Response: 32532647
 Conc: 133.65 ng/ml

Instrument :
 ECD_Q
 ClientSampleId :



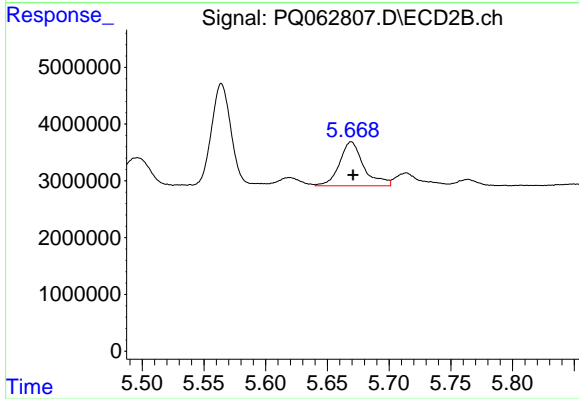
#29 AR-1254-4

R.T.: 5.265 min
 Delta R.T.: 0.000 min
 Response: 23459578
 Conc: 158.49 ng/ml



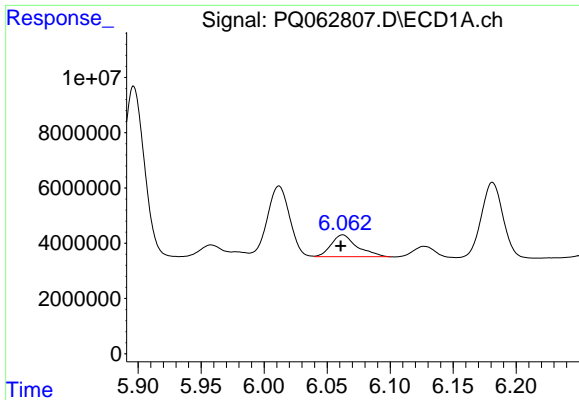
#30 AR-1254-5

R.T.: 6.594 min
 Delta R.T.: 0.000 min
 Response: 12053163
 Conc: 46.19 ng/ml



#30 AR-1254-5

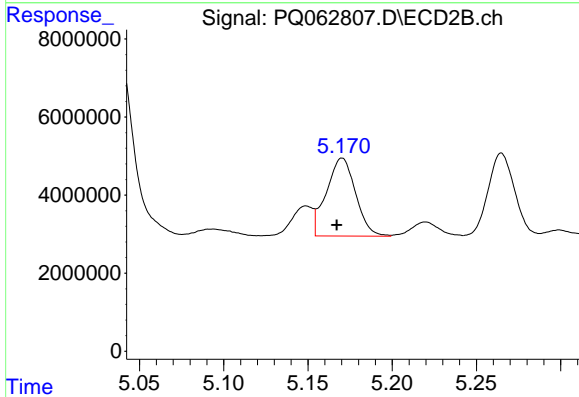
R.T.: 5.669 min
 Delta R.T.: -0.002 min
 Response: 10588555
 Conc: 50.61 ng/ml



#31 AR-1260-1

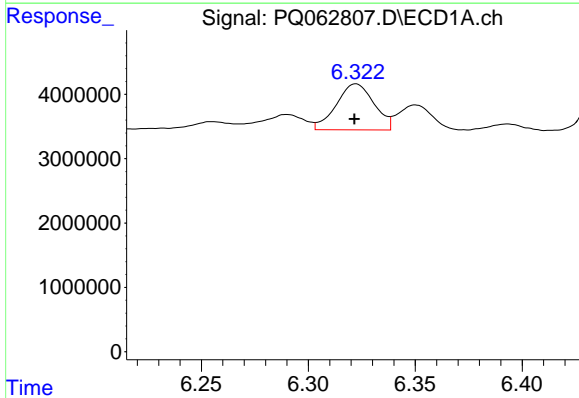
R.T.: 6.062 min
 Delta R.T.: 0.002 min
 Response: 11323419
 Conc: 48.91 ng/ml

Instrument :
 ECD_Q
 ClientSampleId :



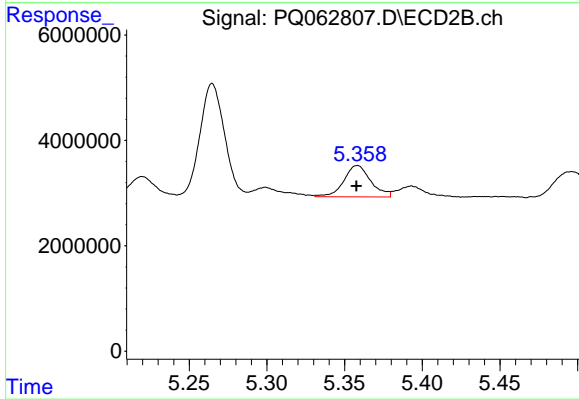
#31 AR-1260-1

R.T.: 5.170 min
 Delta R.T.: 0.003 min
 Response: 24111968
 Conc: 156.48 ng/ml



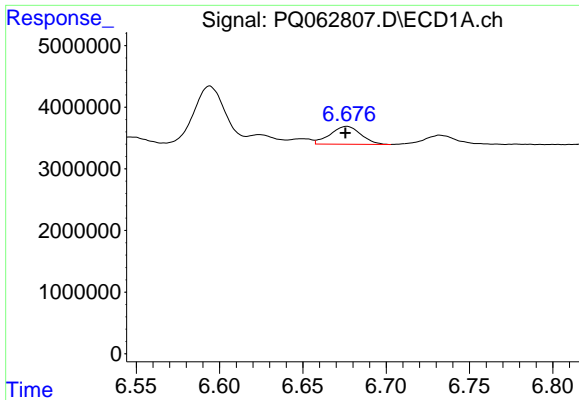
#32 AR-1260-2

R.T.: 6.322 min
 Delta R.T.: 0.000 min
 Response: 8800446
 Conc: 31.33 ng/ml



#32 AR-1260-2

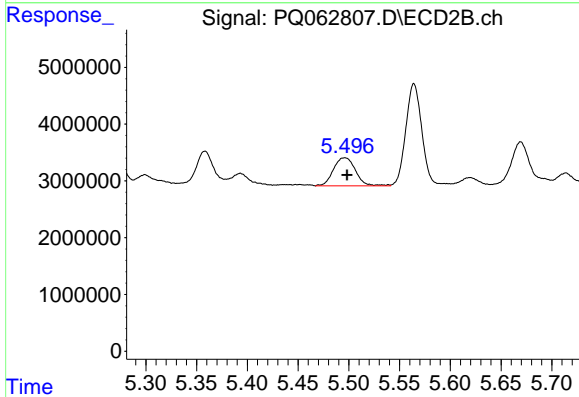
R.T.: 5.358 min
 Delta R.T.: 0.000 min
 Response: 7214705
 Conc: 38.49 ng/ml



#33 AR-1260-3

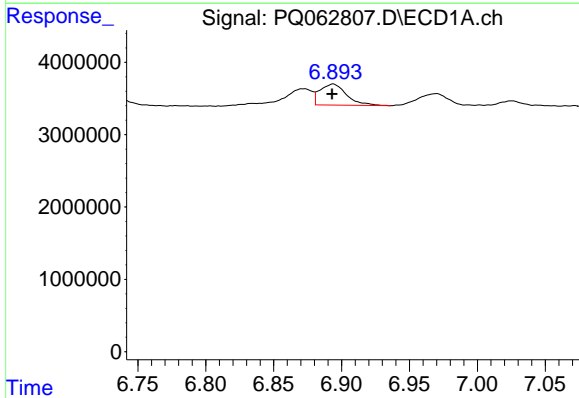
R.T.: 6.676 min
 Delta R.T.: 0.000 min
 Response: 3718594
 Conc: 18.49 ng/ml

Instrument :
 ECD_Q
 ClientSampleId :



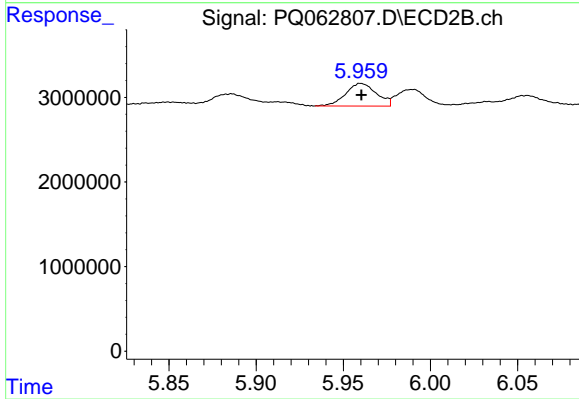
#33 AR-1260-3

R.T.: 5.496 min
 Delta R.T.: -0.002 min
 Response: 7474509
 Conc: 41.92 ng/ml



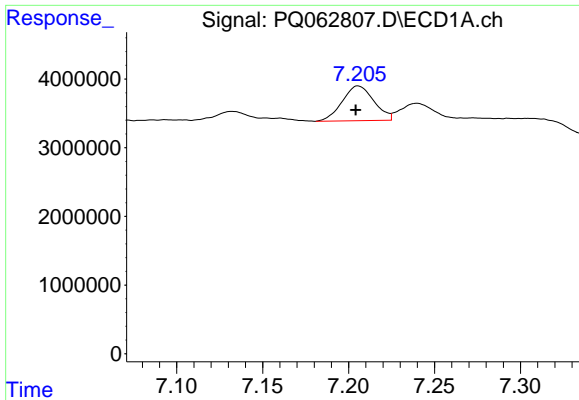
#34 AR-1260-4

R.T.: 6.894 min
 Delta R.T.: 0.000 min
 Response: 3961980
 Conc: 17.24 ng/ml



#34 AR-1260-4

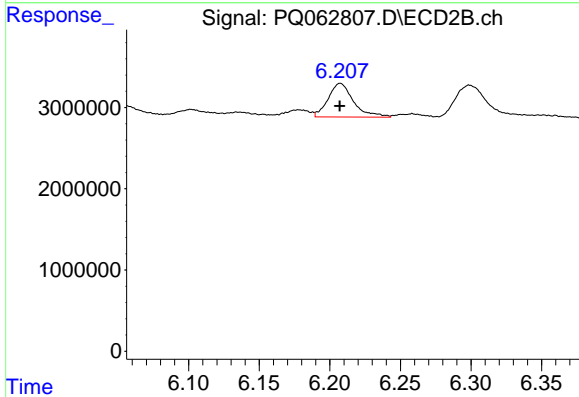
R.T.: 5.960 min
 Delta R.T.: 0.000 min
 Response: 3279048
 Conc: 22.01 ng/ml



#35 AR-1260-5

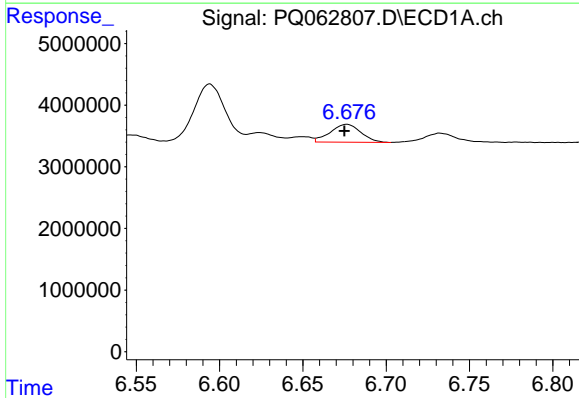
R.T.: 7.206 min
 Delta R.T.: 0.002 min
 Response: 6505589
 Conc: 14.11 ng/ml

Instrument :
 ECD_Q
 ClientSampleId :



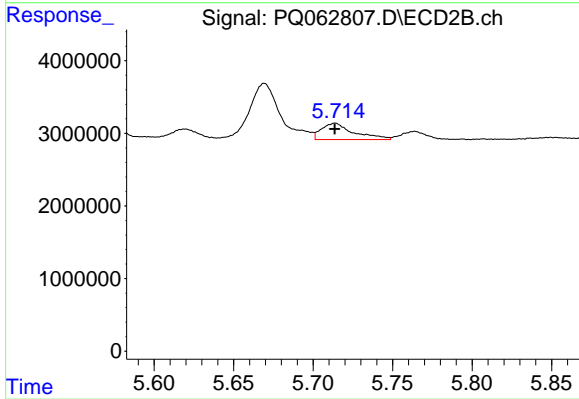
#35 AR-1260-5

R.T.: 6.207 min
 Delta R.T.: 0.000 min
 Response: 5194743
 Conc: 15.43 ng/ml



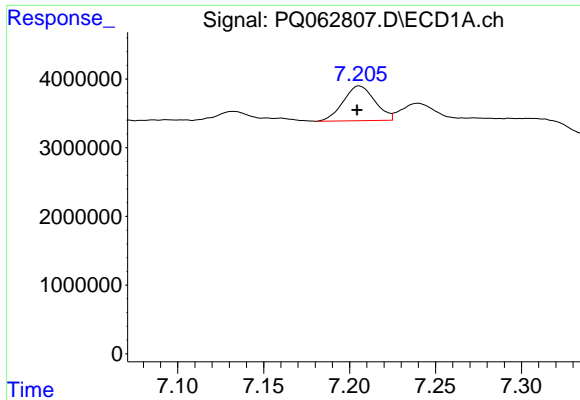
#36 AR-1262-1

R.T.: 6.676 min
 Delta R.T.: 0.002 min
 Response: 3718594
 Conc: 12.03 ng/ml



#36 AR-1262-1

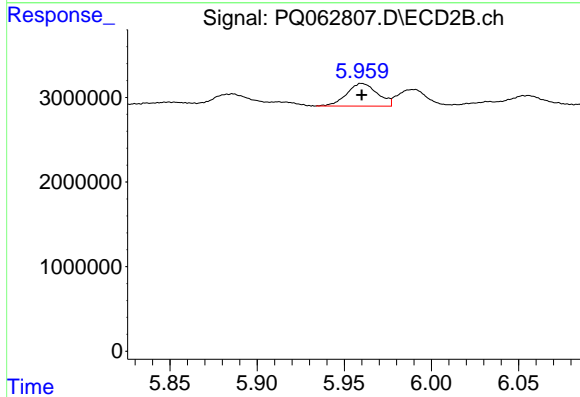
R.T.: 5.714 min
 Delta R.T.: 0.000 min
 Response: 3215928
 Conc: 14.97 ng/ml



#37 AR-1262-2

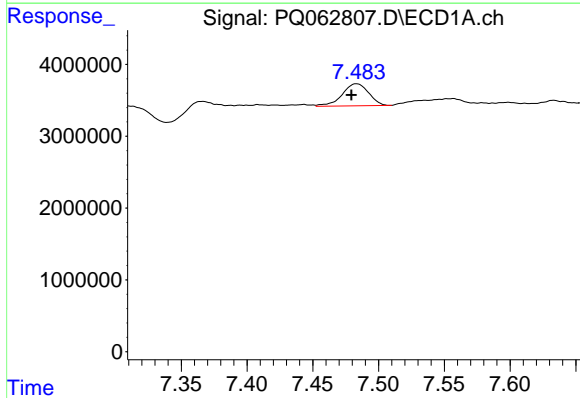
R.T.: 7.206 min
 Delta R.T.: 0.001 min
 Response: 6505589
 Conc: 11.99 ng/ml

Instrument :
 ECD_Q
 ClientSampleId :



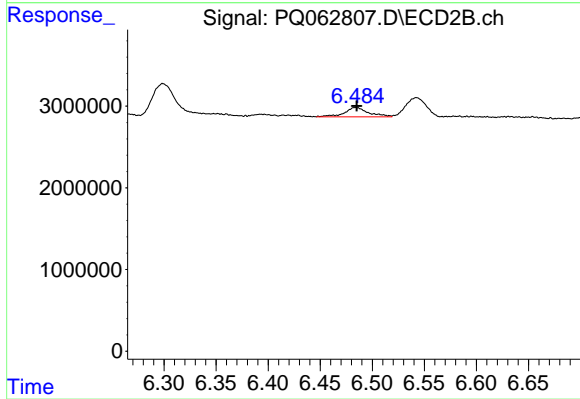
#37 AR-1262-2

R.T.: 5.960 min
 Delta R.T.: 0.000 min
 Response: 3279048
 Conc: 16.56 ng/ml



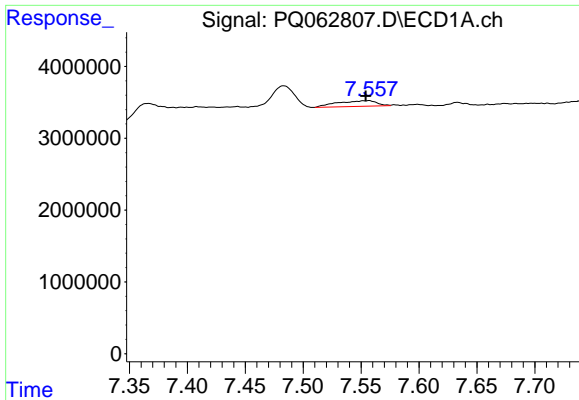
#38 AR-1262-3

R.T.: 7.483 min
 Delta R.T.: 0.004 min
 Response: 4299358
 Conc: 11.80 ng/ml



#38 AR-1262-3

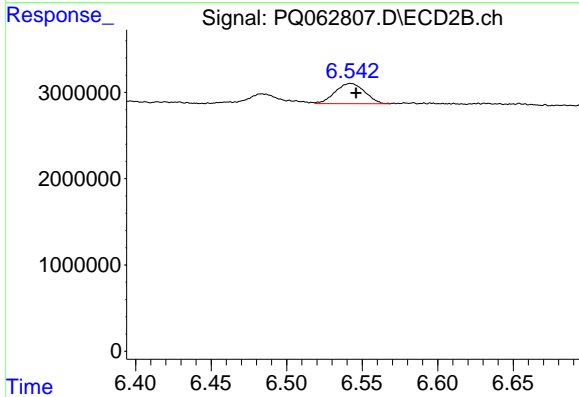
R.T.: 6.484 min
 Delta R.T.: -0.001 min
 Response: 1830813
 Conc: 11.22 ng/ml



#39 AR-1262-4

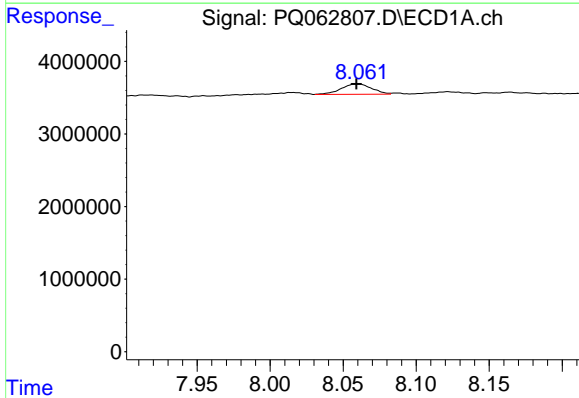
R.T.: 7.556 min
 Delta R.T.: 0.002 min
 Response: 1898623
 Conc: 6.80 ng/ml

Instrument :
 ECD_Q
 ClientSampleId :



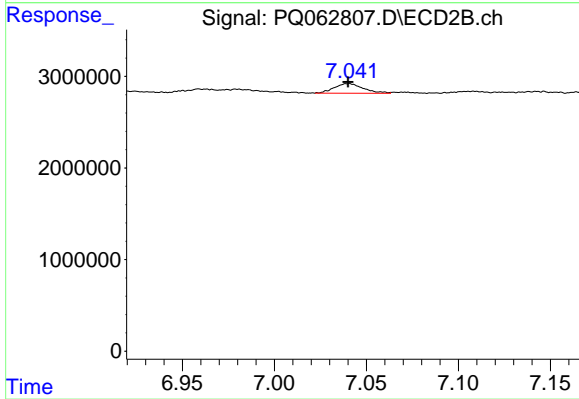
#39 AR-1262-4

R.T.: 6.543 min
 Delta R.T.: -0.003 min
 Response: 3218476
 Conc: 10.74 ng/ml



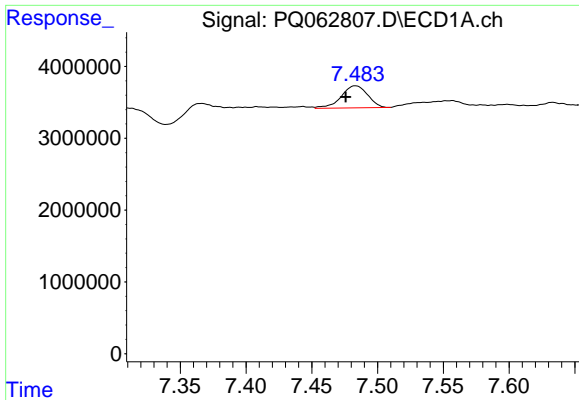
#40 AR-1262-5

R.T.: 8.060 min
 Delta R.T.: 0.000 min
 Response: 2093622
 Conc: 11.22 ng/ml



#40 AR-1262-5

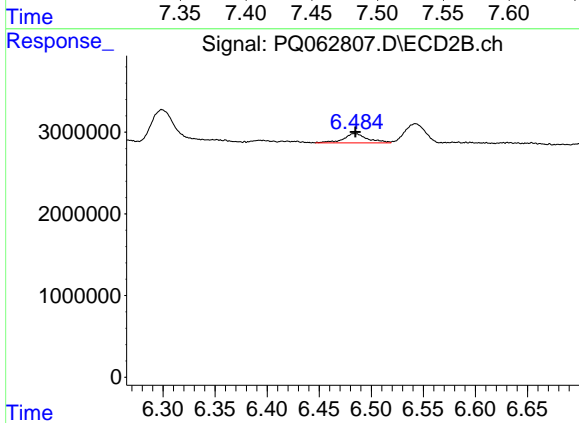
R.T.: 7.040 min
 Delta R.T.: 0.000 min
 Response: 1144545
 Conc: 7.61 ng/ml



#41 AR-1268-1

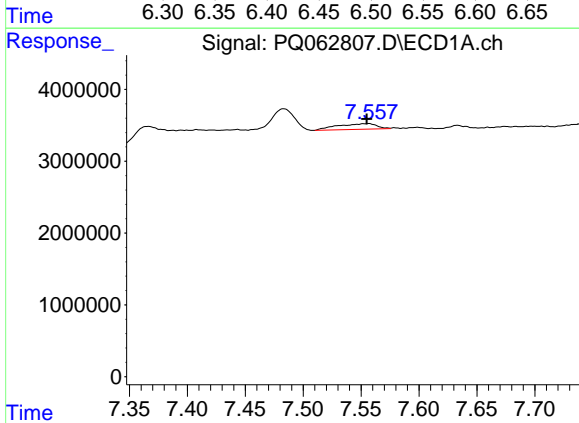
R.T.: 7.483 min
 Delta R.T.: 0.007 min
 Response: 4299358
 Conc: 6.77 ng/ml

Instrument :
 ECD_Q
 ClientSampleId :



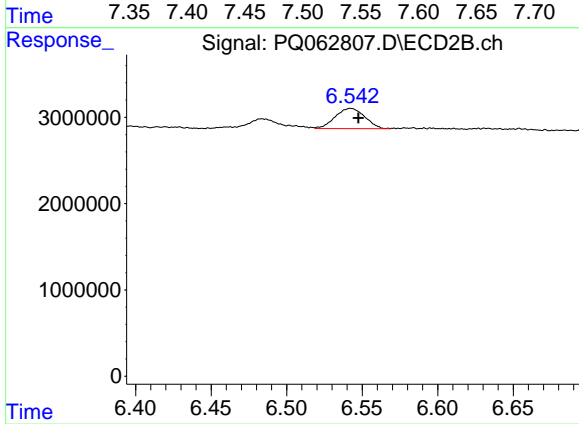
#41 AR-1268-1

R.T.: 6.484 min
 Delta R.T.: 0.000 min
 Response: 1830813
 Conc: 3.86 ng/ml



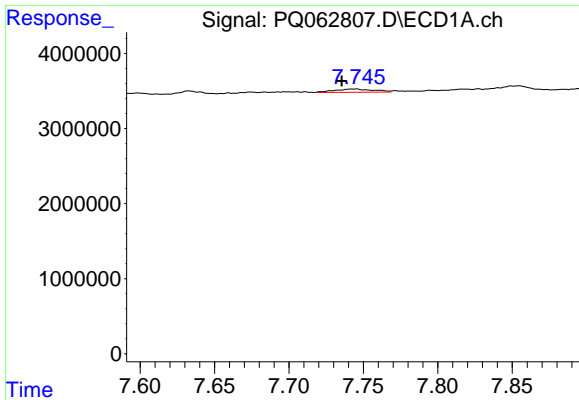
#42 AR-1268-2

R.T.: 7.556 min
 Delta R.T.: 0.002 min
 Response: 1898623
 Conc: 3.29 ng/ml



#42 AR-1268-2

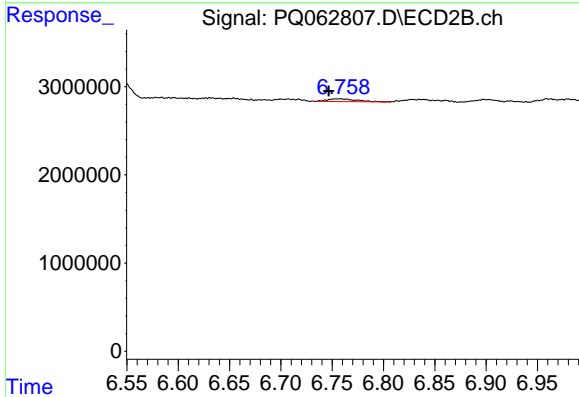
R.T.: 6.543 min
 Delta R.T.: -0.005 min
 Response: 3218476
 Conc: 7.44 ng/ml



#43 AR-1268-3

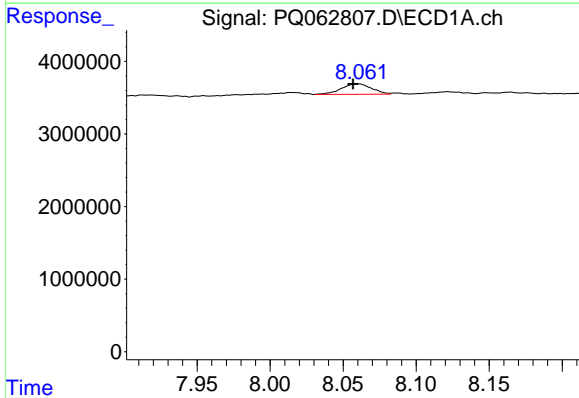
R.T.: 7.745 min
 Delta R.T.: 0.009 min
 Response: 788836
 Conc: 1.63 ng/ml

Instrument :
 ECD_Q
 ClientSampleId :



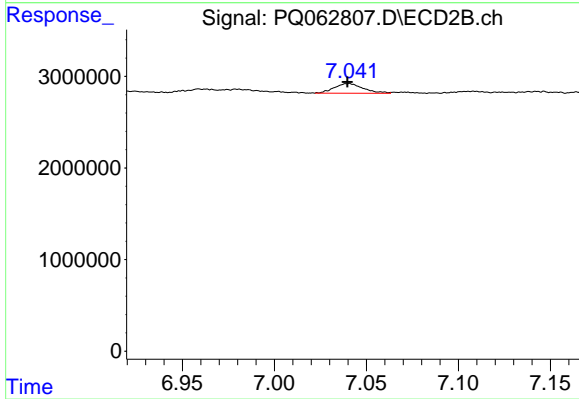
#43 AR-1268-3

R.T.: 6.758 min
 Delta R.T.: 0.011 min
 Response: 639628
 Conc: 1.68 ng/ml



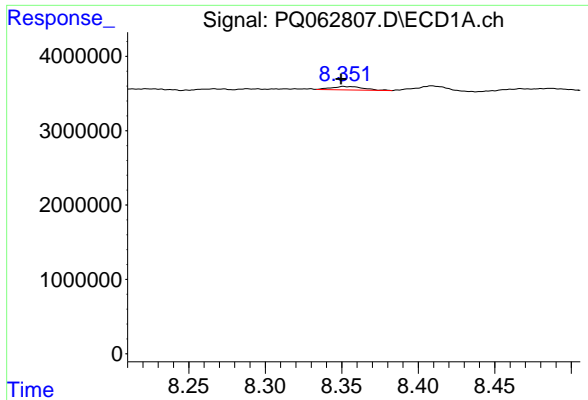
#44 AR-1268-4

R.T.: 8.060 min
 Delta R.T.: 0.003 min
 Response: 2093622
 Conc: 9.94 ng/ml



#44 AR-1268-4

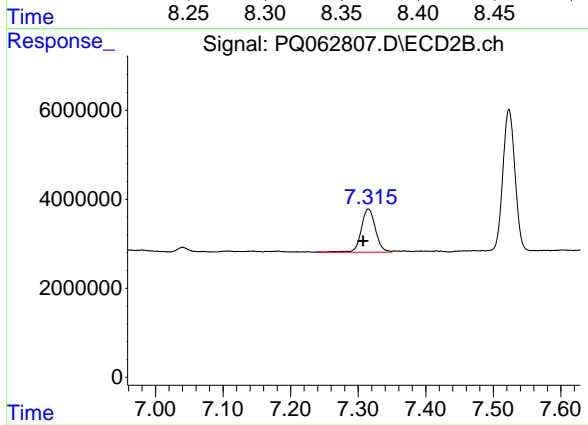
R.T.: 7.040 min
 Delta R.T.: 0.000 min
 Response: 1144545
 Conc: 6.88 ng/ml



#45 AR-1268-5

R.T.: 8.351 min
Delta R.T.: 0.002 min
Response: 686810
Conc: 0.48 ng/ml

Instrument :
ECD_Q
ClientSampleId :



#45 AR-1268-5

R.T.: 7.315 min
Delta R.T.: 0.008 min
Response: 14187593
Conc: 11.52 ng/ml