

Data Path : Z:\pestpcbsrv\HPCHEM1\ECD_Q\Data\PQ080822\
 Data File : PQ058840.D
 Signal(s) : Signal #1: ECD1A.ch Signal #2: ECD2B.ch
 Acq On : 08 Aug 2022 11:24
 Operator : YP\AJ
 Sample : N3980-03
 Misc : AR1248 MDL 25 PPB
 ALS Vial : 4 Sample Multiplier: 1

Instrument :
 ECD_Q
ClientSampleId :
 MDL-SOIL-03-QT3-2022

Integration File signal 1: autoint1.e
 Integration File signal 2: autoint2.e
 Quant Time: Aug 09 00:00:59 2022
 Quant Method : Z:\pestpcbsrv\HPCHEM1\ECD_Q\Method\PQ080422.M
 Quant Title : GC EXTRACTABLES
 QLast Update : Sat Aug 06 07:23:38 2022
 Response via : Initial Calibration
 Integrator: ChemStation

Volume Inj. : 2 µl
 Signal #1 Phase : ZB-MR1 Signal #2 Phase: ZB-MR2
 Signal #1 Info : 30Mx0.32mmx 0.50µ Signal #2 Info : 30M x 0.32mm x 0.25µm

Compound	RT#1	RT#2	Resp#1	Resp#2	ng/ml	ng/ml

System Monitoring Compounds						
1) SA Tetrachlo...	4.686	4.048	131.9E6	103.4E6	19.524	18.847
2) SA Decachlor...	10.591	9.165	125.9E6	72700067	17.928	18.430
Target Compounds						
21) L5 AR-1248-1	5.867	5.145	2462156	2485860	24.190	24.579
22) L5 AR-1248-2	6.138	5.382	4049110	3948586	28.253	27.383
23) L5 AR-1248-3	6.345	5.426	4177888	4049625	24.328	26.936
24) L5 AR-1248-4	6.751	5.600	4754350	4709904	25.905	26.969
25) L5 AR-1248-5	6.790	5.994	4922761	4252370	25.287	25.694

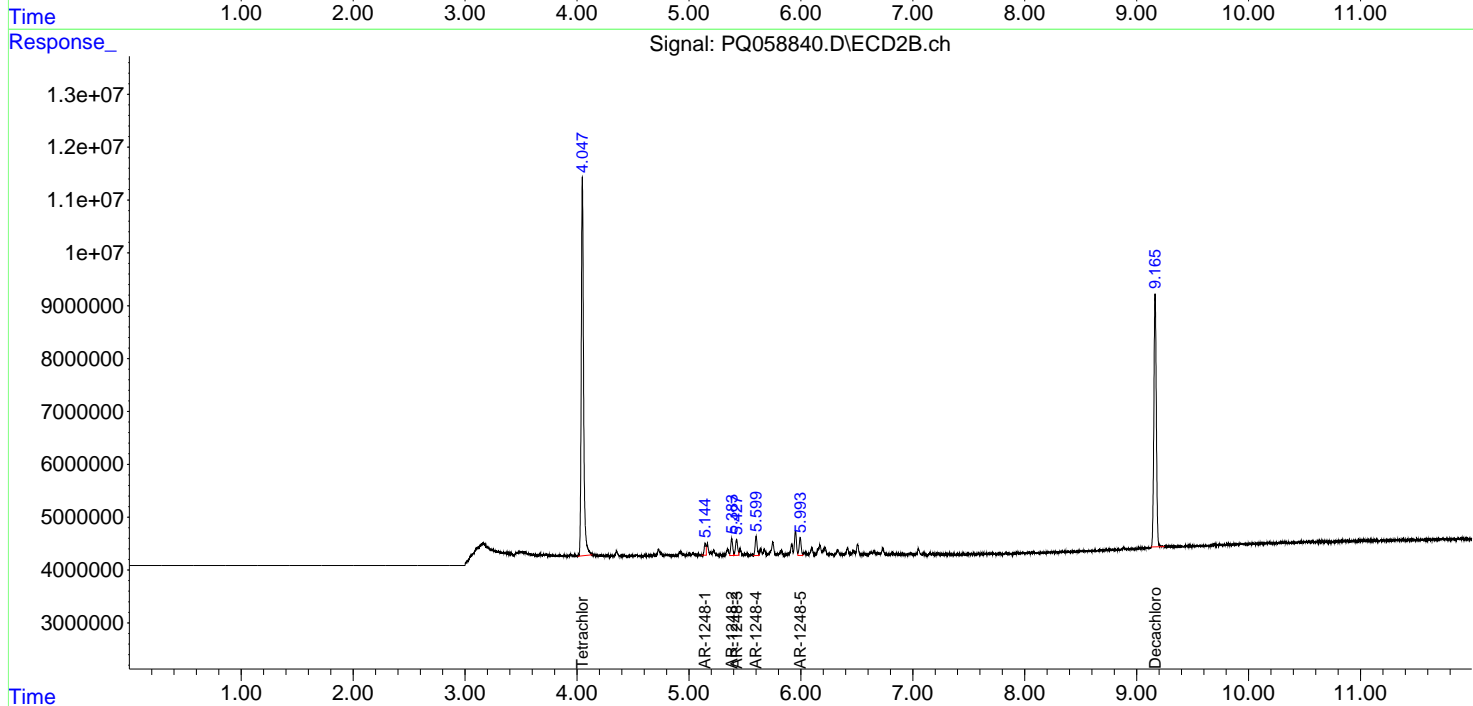
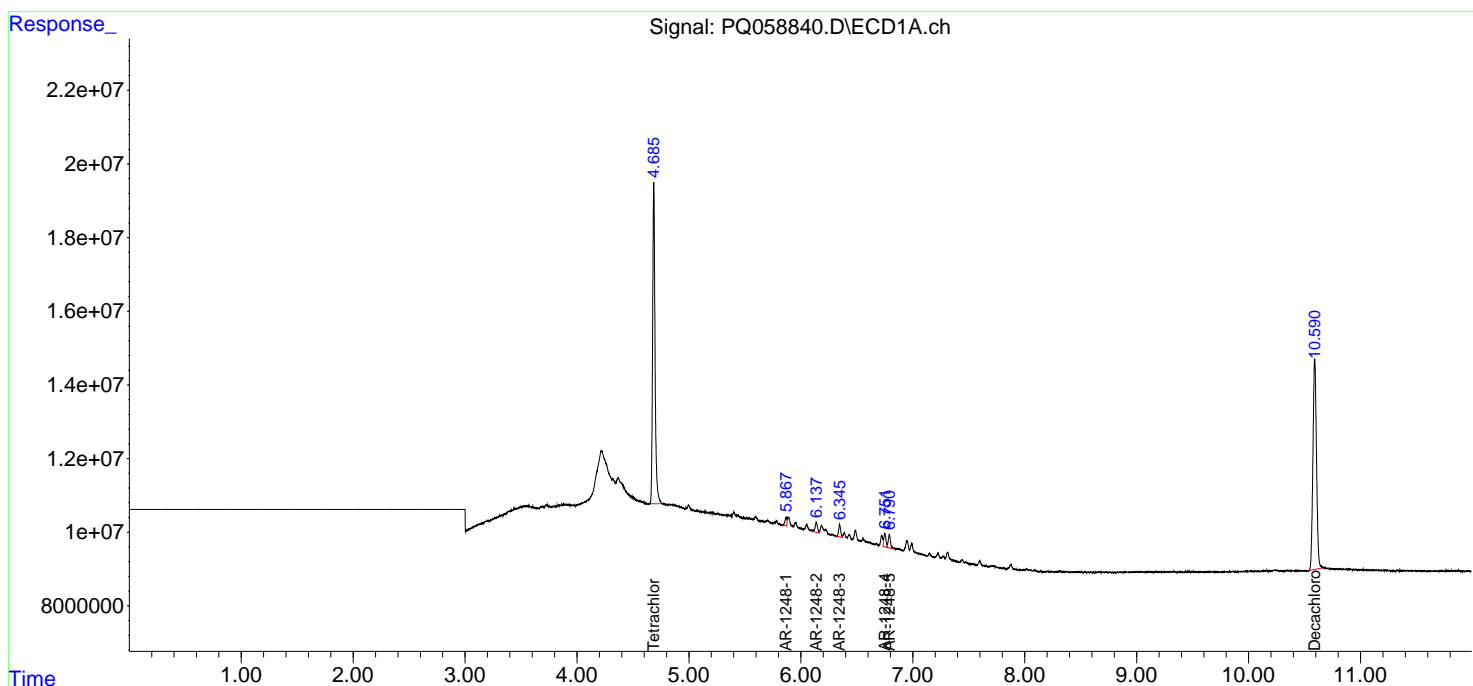
(f)=RT Delta > 1/2 Window (#)=Amounts differ by > 25% (m)=manual int.

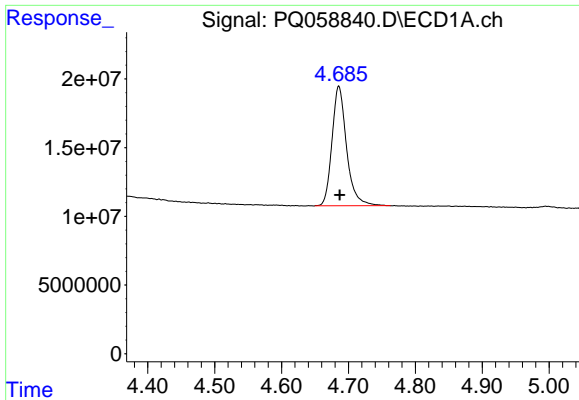
Data Path : Z:\pestpcbsrv\HPCHEM1\ECD_Q\Data\PQ080822\
 Data File : PQ058840.D
 Signal(s) : Signal #1: ECD1A.ch Signal #2: ECD2B.ch
 Acq On : 08 Aug 2022 11:24
 Operator : YP\AJ
 Sample : N3980-03
 Misc : AR1248 MDL 25 PPB
 ALS Vial : 4 Sample Multiplier: 1

Instrument :
 ECD_Q
 ClientSampleId :
 MDL-SOIL-03-QT3-2022

Integration File signal 1: autoint1.e
 Integration File signal 2: autoint2.e
 Quant Time: Aug 09 00:00:59 2022
 Quant Method : Z:\pestpcbsrv\HPCHEM1\ECD_Q\Method\PQ080422.M
 Quant Title : GC EXTRACTABLES
 QLast Update : Sat Aug 06 07:23:38 2022
 Response via : Initial Calibration
 Integrator: ChemStation

Volume Inj. : 2 µl
 Signal #1 Phase : ZB-MR1 Signal #2 Phase: ZB-MR2
 Signal #1 Info : 30Mx0.32mmx 0.50µm Signal #2 Info : 30M x 0.32mm x 0.25µm

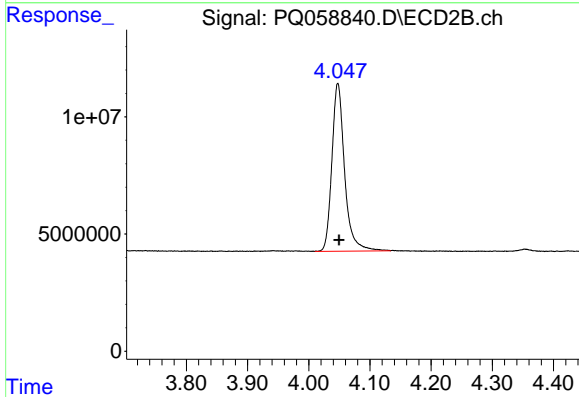




#1 Tetrachloro-m-xylene

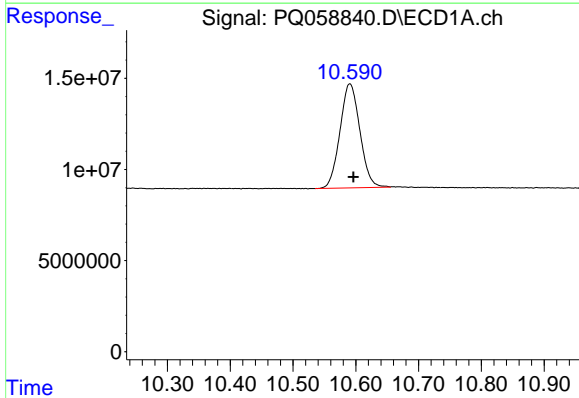
R.T.: 4.686 min
 Delta R.T.: -0.001 min
 Response: 131891161
 Conc: 19.52 ng/ml

Instrument :
 ECD_Q
 ClientSampleId :
 MDL-SOIL-03-QT3-2022



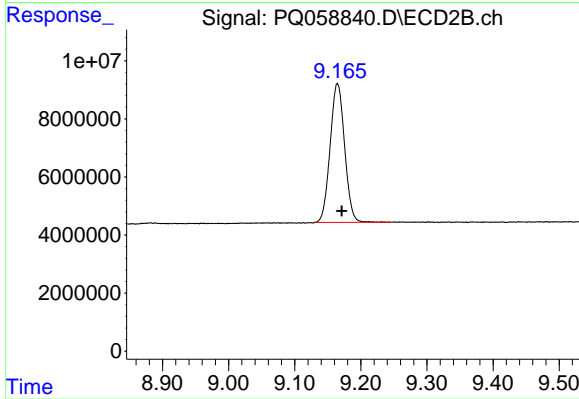
#1 Tetrachloro-m-xylene

R.T.: 4.048 min
 Delta R.T.: -0.002 min
 Response: 103363074
 Conc: 18.85 ng/ml



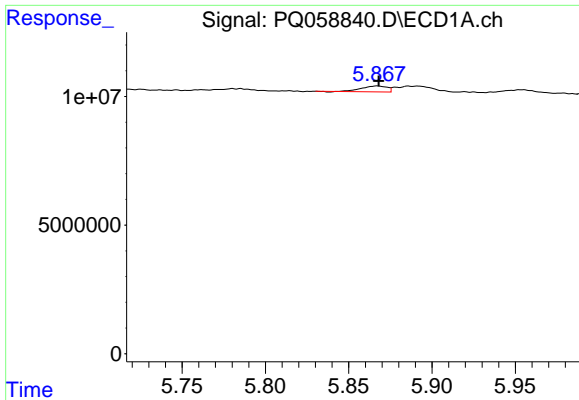
#2 Decachlorobiphenyl

R.T.: 10.591 min
 Delta R.T.: -0.005 min
 Response: 125935832
 Conc: 17.93 ng/ml



#2 Decachlorobiphenyl

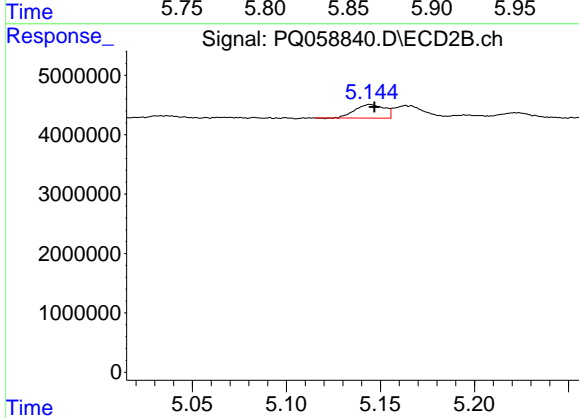
R.T.: 9.165 min
 Delta R.T.: -0.006 min
 Response: 72700067
 Conc: 18.43 ng/ml



#21 AR-1248-1

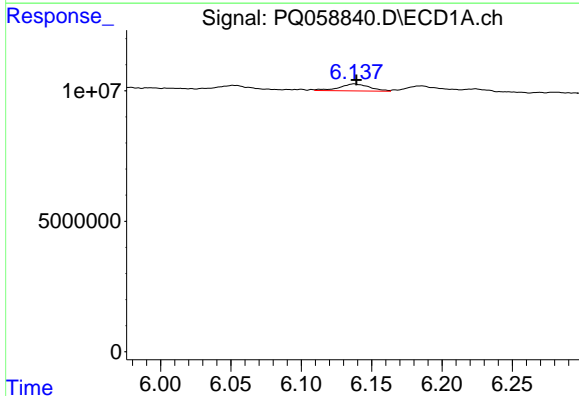
R.T.: 5.867 min
 Delta R.T.: 0.000 min
 Response: 2462156
 Conc: 24.19 ng/ml

Instrument :
 ECD_Q
 ClientSampleId :
 MDL-SOIL-03-QT3-2022



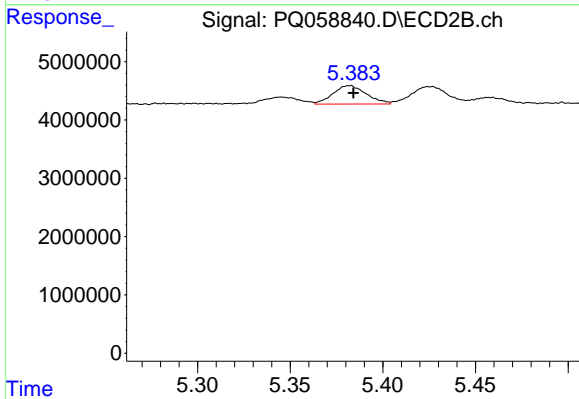
#21 AR-1248-1

R.T.: 5.145 min
 Delta R.T.: -0.002 min
 Response: 2485860
 Conc: 24.58 ng/ml



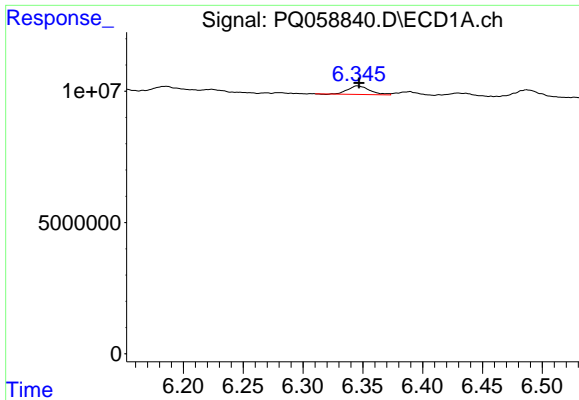
#22 AR-1248-2

R.T.: 6.138 min
 Delta R.T.: -0.002 min
 Response: 4049110
 Conc: 28.25 ng/ml



#22 AR-1248-2

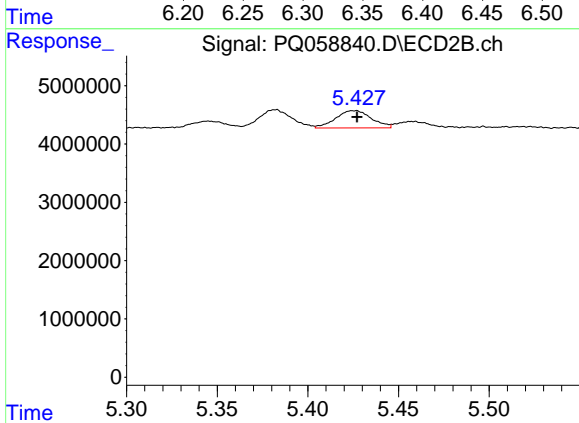
R.T.: 5.382 min
 Delta R.T.: -0.002 min
 Response: 3948586
 Conc: 27.38 ng/ml



#23 AR-1248-3

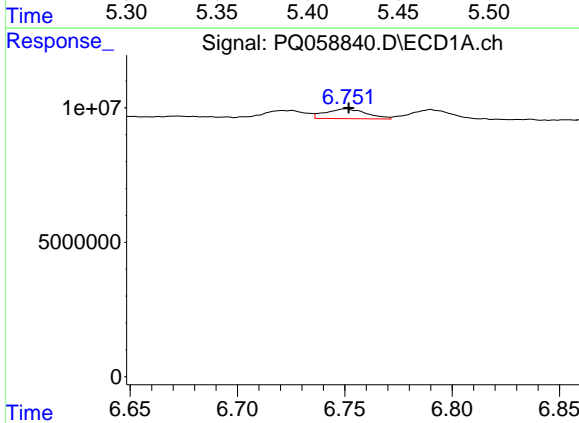
R.T.: 6.345 min
 Delta R.T.: -0.002 min
 Response: 4177888
 Conc: 24.33 ng/ml

Instrument :
 ECD_Q
 ClientSampleId :
 MDL-SOIL-03-QT3-2022



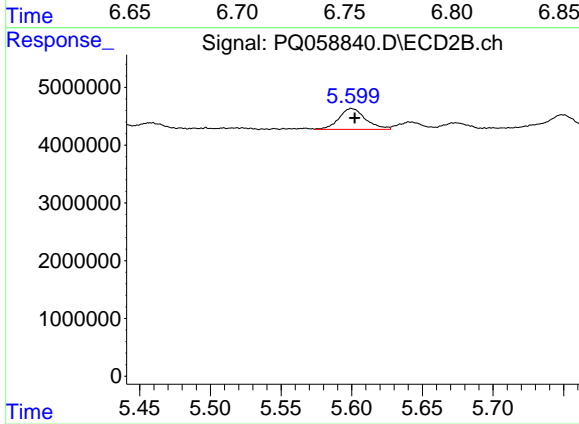
#23 AR-1248-3

R.T.: 5.426 min
 Delta R.T.: -0.002 min
 Response: 4049625
 Conc: 26.94 ng/ml



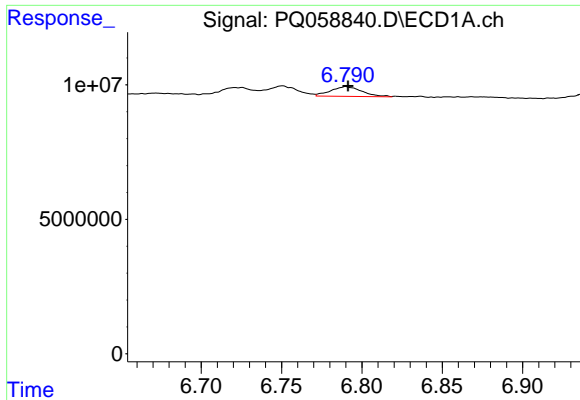
#24 AR-1248-4

R.T.: 6.751 min
 Delta R.T.: -0.001 min
 Response: 4754350
 Conc: 25.91 ng/ml



#24 AR-1248-4

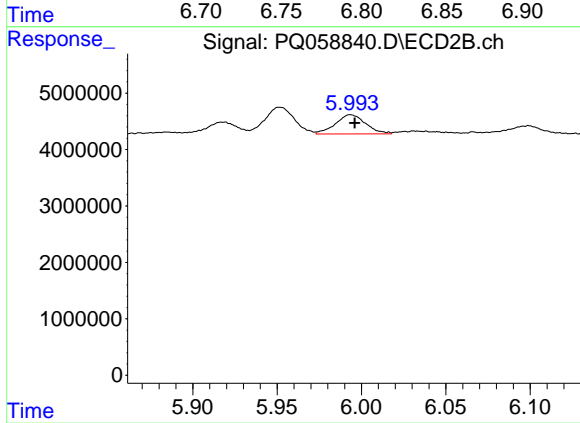
R.T.: 5.600 min
 Delta R.T.: -0.002 min
 Response: 4709904
 Conc: 26.97 ng/ml



#25 AR-1248-5

R.T.: 6.790 min
 Delta R.T.: -0.001 min
 Response: 4922761
 Conc: 25.29 ng/ml

Instrument :
 ECD_Q
 ClientSampleId :
 MDL-SOIL-03-QT3-2022



#25 AR-1248-5

R.T.: 5.994 min
 Delta R.T.: -0.002 min
 Response: 4252370
 Conc: 25.69 ng/ml