

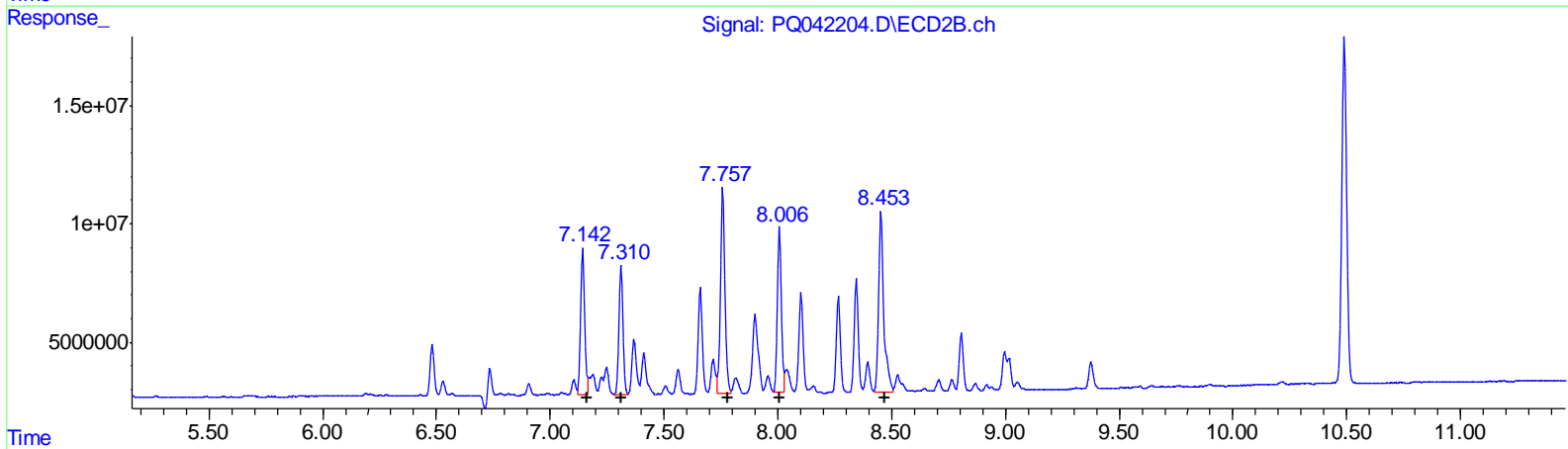
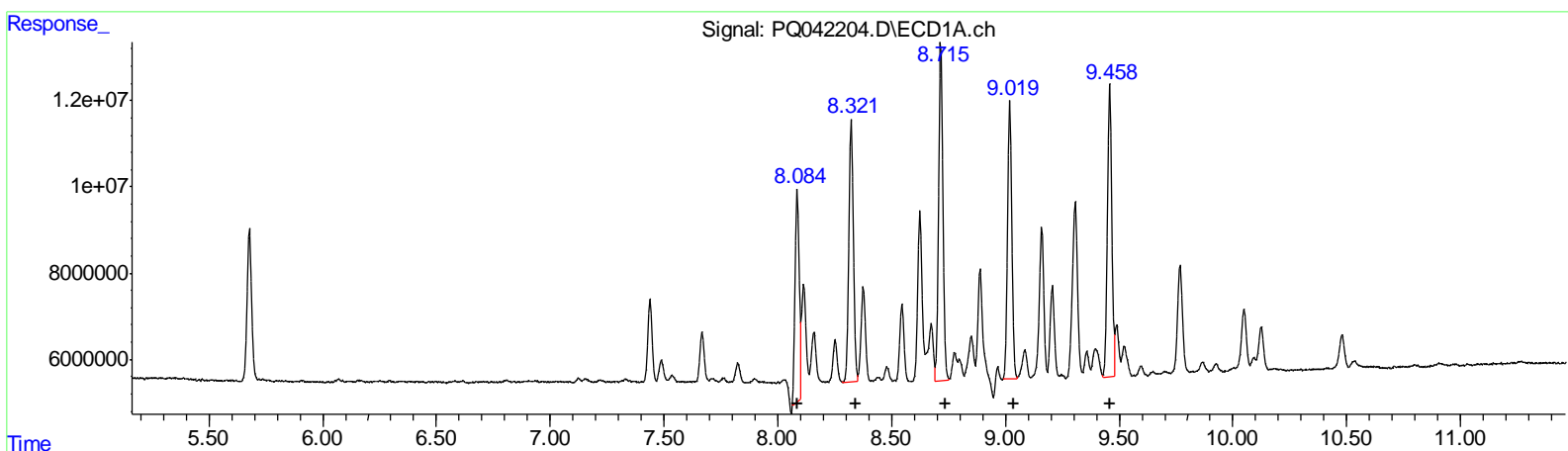
Data Path : Z:\pestpcbsrv\HPCHEM1\ECD_Q\Data\PQ080919\
 Data File : PQ042204.D
 Signal(s) : Signal #1: ECD1A.ch Signal #2: ECD2B.ch
 Acq On : 08 Aug 2019 23:12
 Operator : SM\AJ
 Sample : AR1254CCC400
 Misc :
 ALS Vial : 6 Sample Multiplier: 1

Instrument :
 ECD_Q
LabSampleID :
 AR1254343

Manual Integrations
APPROVED
 Ankita
 8/12/2019 9:18:04 AM

Integration File signal 1: autoint1.e
 Integration File signal 2: autoint2.e
 Quant Time: Aug 09 05:22:05 2019
 Quant Method : Z:\pestpcbsrv\HPCHEM1\ECD_Q\Method\PQ072719CLP.M
 Quant Title : GC EXTRACTABLES
 QLast Update : Mon Jul 29 04:03:40 2019
 Response via : Initial Calibration
 Integrator: ChemStation

Volume Inj. : 1 µl
 Signal #1 Phase : ZB MR1 Signal #2 Phase: ZB MR2
 Signal #1 Info : 30Mx0.32mmx 0.5µm Signal #2 Info : 30M x 0.32mm x 0.25µm



QEdit

(26) AR-1254-1 (L6)		
R.T.	Response	Conc
8.08	64301192	462.22
8.32	84782376	370.42
8.72	101596137	371.57
9.02	84398709	342.84
9.46	91921533	339.39
(26) AR-1254-1 #2 (L6)		
R.T.	Response	Conc
7.14	76962198	420.82
7.31	67266022	415.55
7.76	117894639	408.78
8.01	85858554	395.53
8.45	119513145	397.36

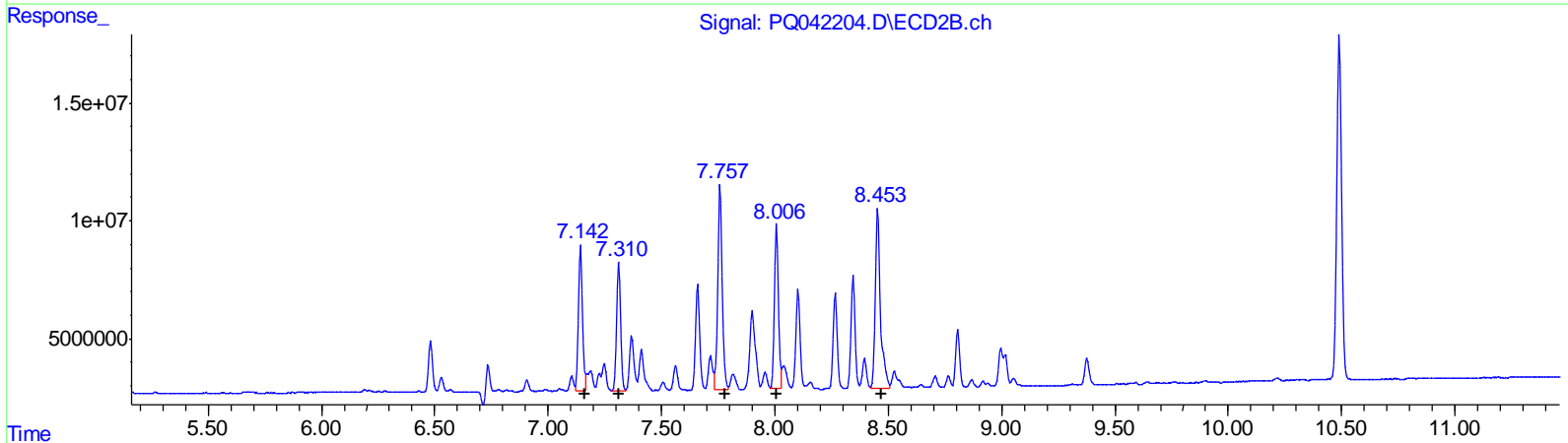
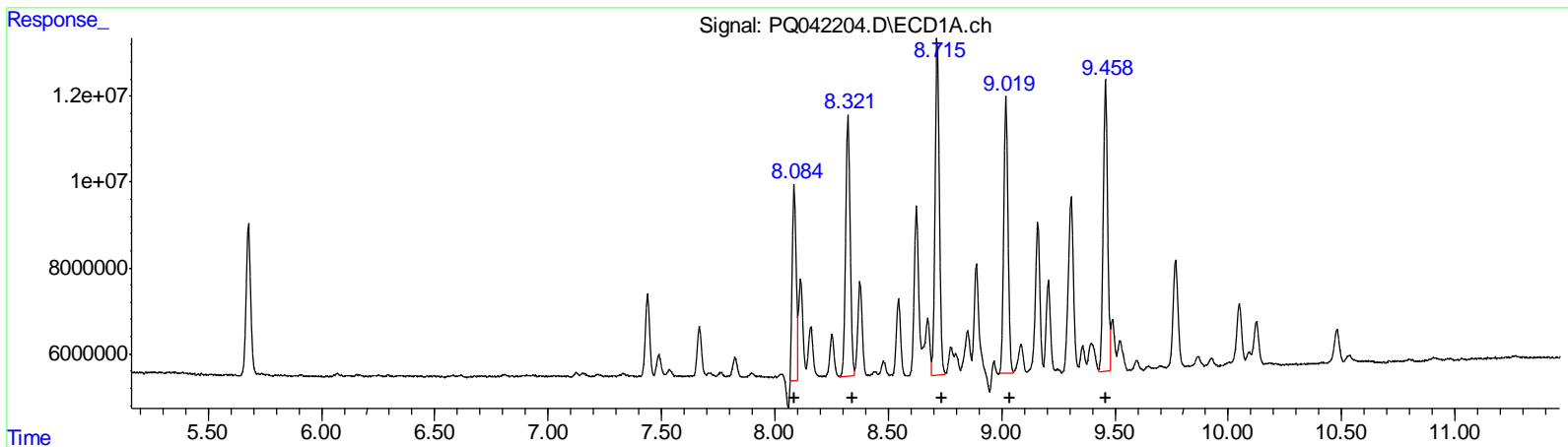
Data Path : Z:\pestpcbsrv\HPCHEM1\ECD_Q\Data\PQ080919\
 Data File : PQ042204.D
 Signal(s) : Signal #1: ECD1A.ch Signal #2: ECD2B.ch
 Acq On : 08 Aug 2019 23:12
 Operator : SM\AJ
 Sample : AR1254CCC400
 Misc :
 ALS Vial : 6 Sample Multiplier: 1

Instrument :
 ECD_Q
LabSampleID :
 AR1254343

Manual Integrations
APPROVED
 Ankita
 8/12/2019 9:18:04 AM

Integration File signal 1: autoint1.e
 Integration File signal 2: autoint2.e
 Quant Time: Aug 09 05:22:05 2019
 Quant Method : Z:\pestpcbsrv\HPCHEM1\ECD_Q\Method\PQ072719CLP.M
 Quant Title : GC EXTRACTABLES
 QLast Update : Mon Jul 29 04:03:40 2019
 Response via : Initial Calibration
 Integrator: ChemStation

Volume Inj. : 1 µl
 Signal #1 Phase : ZB MR1 Signal #2 Phase: ZB MR2
 Signal #1 Info : 30Mx0.32mmx 0.5µm Signal #2 Info : 30M x 0.32mm x 0.25µm



QEdit

(26) AR-1254-1 (L6)		
R.T.	Response	Conc
8.08	56677953	407.42
8.32	84782376	370.42
8.72	101596137	371.57
9.02	84398709	342.84
9.46	91921533	339.39
(26) AR-1254-1 #2 (L6)		
R.T.	Response	Conc
7.14	76962198	420.82
7.31	67266022	415.55
7.76	117894639	408.78
8.01	85858554	395.53
8.45	119513145	397.36

(+) = Expected Retention Time

Data Path : Z:\pestpcbsrv\HPCHEM1\ECD_Q\Data\PQ080919\
 Data File : PQ042204.D
 Signal(s) : Signal #1: ECD1A.ch Signal #2: ECD2B.ch
 Acq On : 08 Aug 2019 23:12
 Operator : SM\AJ
 Sample : AR1254CCC400
 Misc :
 ALS Vial : 6 Sample Multiplier: 1

Instrument :
 ECD_Q
LabSampleId :
 AR1254343

Integration File signal 1: autoint1.e
 Integration File signal 2: autoint2.e
 Quant Time: Aug 09 05:22:05 2019
 Quant Method : Z:\pestpcbsrv\HPCHEM1\ECD_Q\Method\PQ072719CLP.M
 Quant Title : GC EXTRACTABLES
 QLast Update : Mon Jul 29 04:03:40 2019
 Response via : Initial Calibration
 Integrator: ChemStation

Manual Integrations
APPROVED

Ankita
 8/12/2019 9:18:04 AM

Volume Inj. : 1 µl
 Signal #1 Phase : ZB MR1 Signal #2 Phase: ZB MR2
 Signal #1 Info : 30Mx0.32mmx 0.5µm Signal #2 Info : 30M x 0.32mm x 0.25µm

Compound	RT#1	RT#2	Resp#1	Resp#2	ng/ml	ng/ml
----------	------	------	--------	--------	-------	-------

System Monitoring Compounds

1) SA Tetrachlo...	5.678	4.739	48140791	44166270	20.991	22.917
2) SA Decachlor...	12.066	10.489	280.0E6	214.1E6	33.207	44.266 #

Target Compounds

26) L6 AR-1254-1	8.084	7.142	56677953	76962198	407.419m	420.824
27) L6 AR-1254-2	8.322	7.311	84782376	67266022	370.418	415.552
28) L6 AR-1254-3	8.716	7.758	101.6E6	117.9E6	371.566	408.779
29) L6 AR-1254-4	9.019	8.007	84398709	85858554	342.841	395.529
30) L6 AR-1254-5	9.458	8.453	91921533	119.5E6	339.387	397.360

AJ
 08/27/19

(f)=RT Delta > 1/2 Window (#)=Amounts differ by > 25% (m)=manual int.