

Data Path : Z:\pestpcbsrv\HPCHEM1\ECD_Q\Data\PQ081224\
 Data File : PQ067870.D
 Signal(s) : Signal #1: ECD1A.ch Signal #2: ECD2B.ch
 Acq On : 12 Aug 2024 10:56
 Operator : YP\AJ
 Sample : AR1660CCC400
 Misc :
 ALS Vial : 3 Sample Multiplier: 1

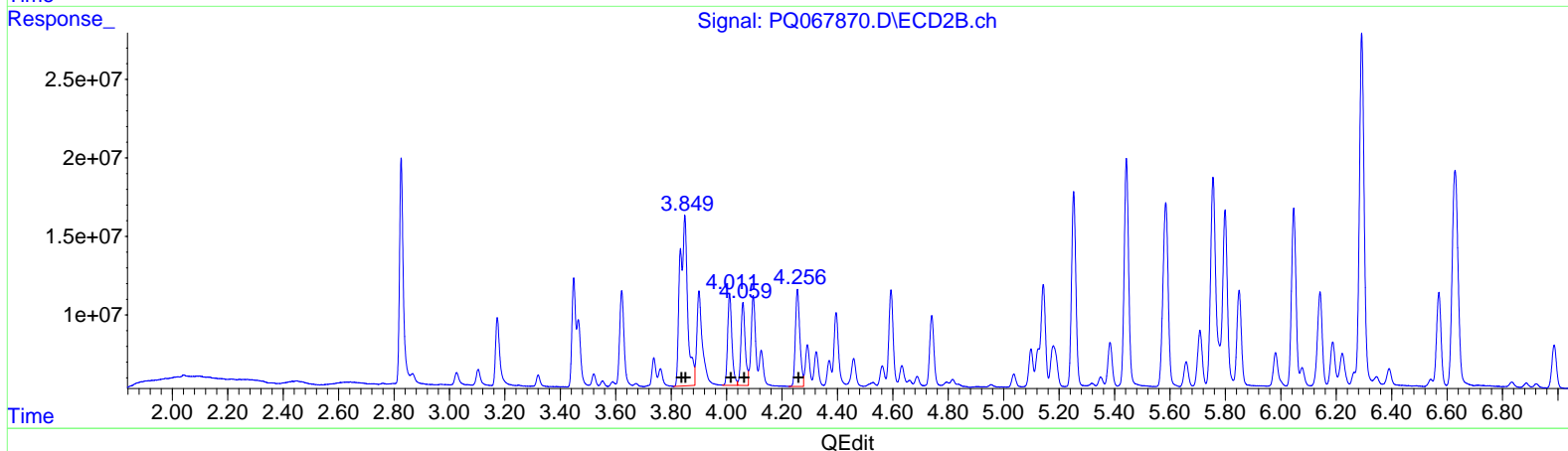
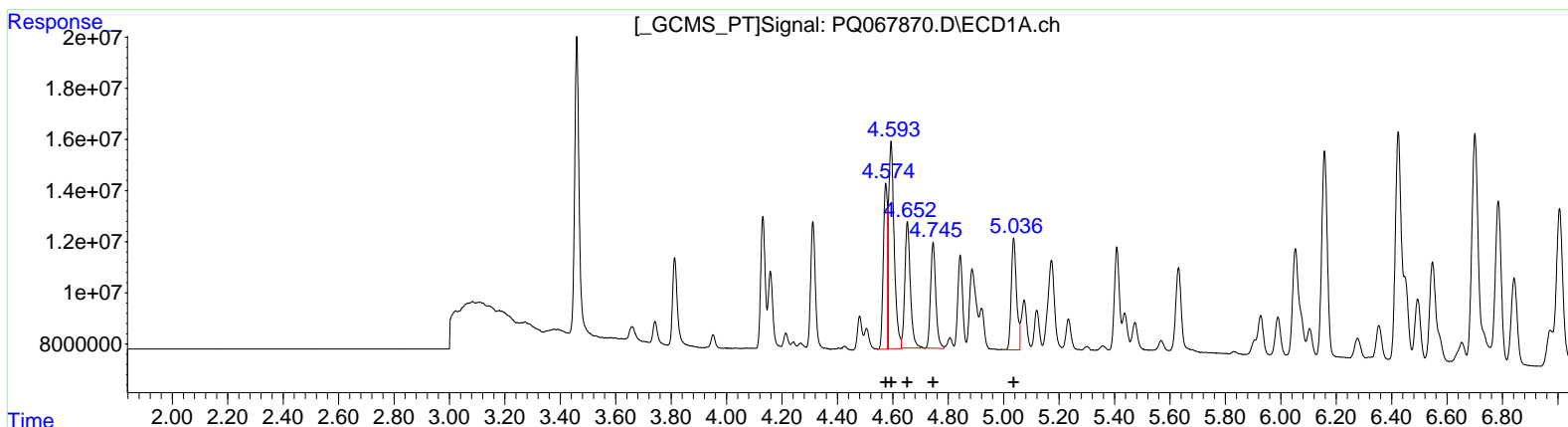
Instrument :
 ECD_Q
 LabSampleId :
 AR1660CCC400

Manual Integrations APPROVED

Reviewed By :Yogesh Patel 08/14/2024
 Supervised By :Ankita Jodhani 08/14/2024

Integration File signal 1: autoint1.e
 Integration File signal 2: autoint2.e
 Quant Time: Aug 12 13:27:37 2024
 Quant Method : Z:\pestpcbsrv\HPCHEM1\ECD_Q\Method\PQ072324CLP.M
 Quant Title : GC EXTRACTABLES
 QLast Update : Wed Jul 24 04:31:32 2024
 Response via : Initial Calibration
 Integrator: ChemStation

Volume Inj. : 1 µl
 Signal #1 Phase : ZB MR1 Signal #2 Phase: ZB MR2
 Signal #1 Info : 30Mx0.32mmx 0.5µm Signal #2 Info : 30M x 0.32mm x 0.25µm



(3) AR-1016-1 (L1)		
R.T.	Response	Conc
4.57	65952682	388.90
4.59	112923634	366.96
4.65	69274745	370.27
4.75	54371968	361.50
5.04	57442632	350.92
(3) AR-1016-1 #2 (L1)		
R.T.	Response	Conc
3.85	206331893	1146.79
3.85	206331893	763.36
4.01	62117085	410.06
4.06	56748067	420.02
4.26	69587588	418.17

Data Path : Z:\pestpcbsrv\HPCHEM1\ECD_Q\Data\PQ081224\
 Data File : PQ067870.D
 Signal(s) : Signal #1: ECD1A.ch Signal #2: ECD2B.ch
 Acq On : 12 Aug 2024 10:56
 Operator : YP\AJ
 Sample : AR1660CCC400
 Misc :
 ALS Vial : 3 Sample Multiplier: 1

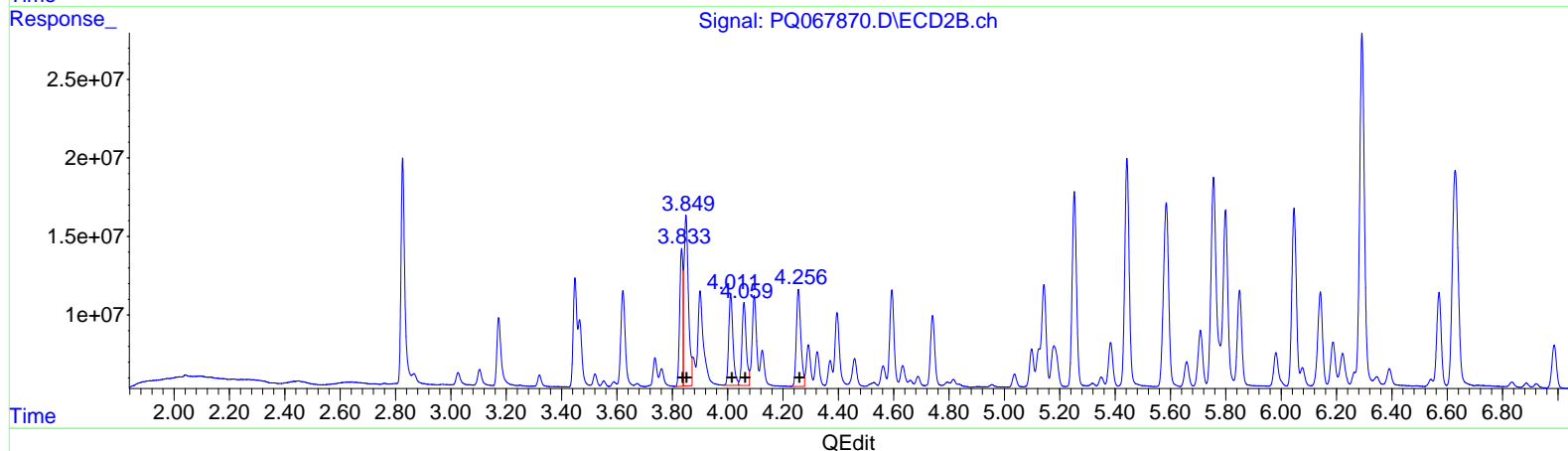
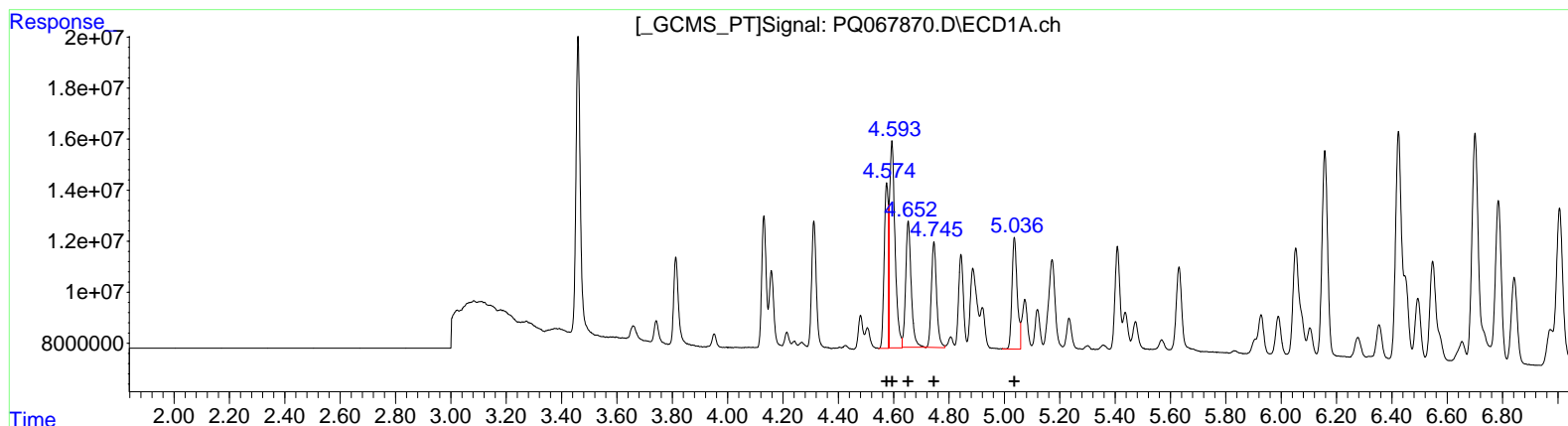
Instrument :
 ECD_Q
 LabSampleId :
 AR1660CCC400

Manual Integrations APPROVED

Reviewed By :Yogesh Patel 08/14/2024
 Supervised By :Ankita Jodhani 08/14/2024

Integration File signal 1: autoint1.e
 Integration File signal 2: autoint2.e
 Quant Time: Aug 12 13:27:37 2024
 Quant Method : Z:\pestpcbsrv\HPCHEM1\ECD_Q\Method\PQ072324CLP.M
 Quant Title : GC EXTRACTABLES
 QLast Update : Wed Jul 24 04:31:32 2024
 Response via : Initial Calibration
 Integrator: ChemStation

Volume Inj. : 1 µl
 Signal #1 Phase : ZB MR1 Signal #2 Phase: ZB MR2
 Signal #1 Info : 30Mx0.32mmx 0.5µm Signal #2 Info : 30M x 0.32mm x 0.25µm



QEdit

(3) AR-1016-1 #2 (L1)			
R.T.	Response	Conc	
4.57	65952682	388.90	
4.59	112923634	366.96	
4.65	69274745	370.27	
4.75	54371968	361.50	
5.04	57442632	350.92	
(3) AR-1016-1 #2 (L1)			
R.T.	Response	Conc	
3.83	69026005	383.65	
3.85	120886275	447.24	
4.01	62117085	410.06	
4.06	56748067	420.02	
4.26	69587588	418.17	

Data Path : Z:\pestpcbsrv\HPCHEM1\ECD_Q\Data\PQ081224\
 Data File : PQ067870.D
 Signal(s) : Signal #1: ECD1A.ch Signal #2: ECD2B.ch
 Acq On : 12 Aug 2024 10:56
 Operator : YP\AJ
 Sample : AR1660CCC400
 Misc :
 ALS Vial : 3 Sample Multiplier: 1

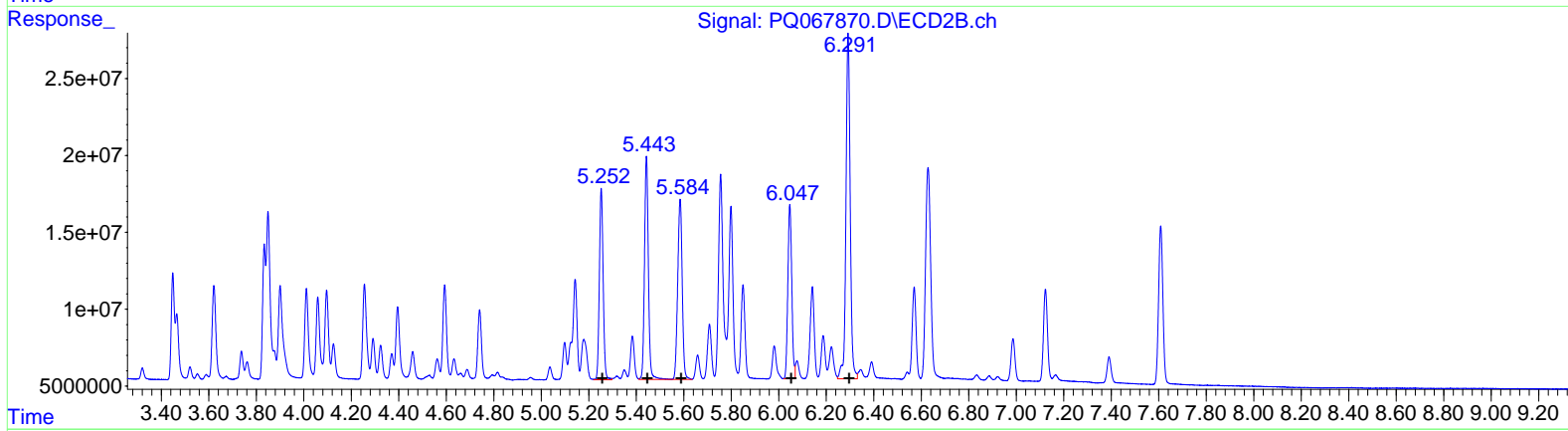
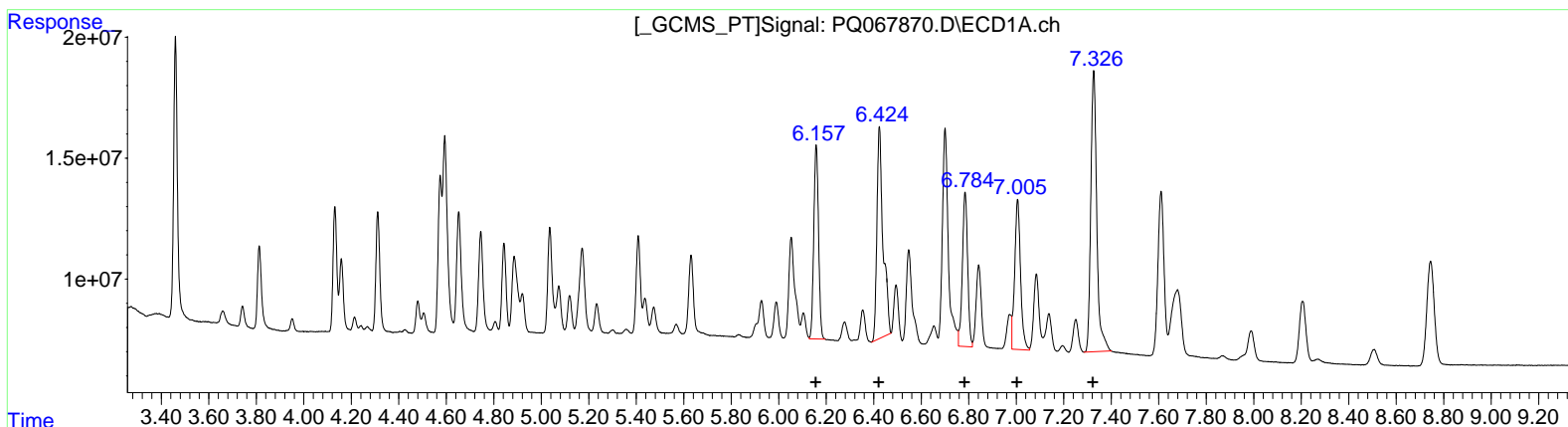
Instrument :
 ECD_Q
 LabSampleId :
 AR1660CCC400

Manual Integrations APPROVED

Reviewed By :Yogesh Patel 08/14/2024
 Supervised By :Ankita Jodhani 08/14/2024

Integration File signal 1: autoint1.e
 Integration File signal 2: autoint2.e
 Quant Time: Aug 12 13:27:37 2024
 Quant Method : Z:\pestpcbsrv\HPCHEM1\ECD_Q\Method\PQ072324CLP.M
 Quant Title : GC EXTRACTABLES
 QLast Update : Wed Jul 24 04:31:32 2024
 Response via : Initial Calibration
 Integrator: ChemStation

Volume Inj. : 1 µl
 Signal #1 Phase : ZB MR1 Signal #2 Phase: ZB MR2
 Signal #1 Info : 30Mx0.32mmx 0.5µm Signal #2 Info : 30M x 0.32mm x 0.25µm



QEdit

(31) AR-1260-1 (L7)		
R.T.	Response	Conc
6.16	111602019	385.02
6.42	157103406	442.61
6.78	98087212	382.19
7.01	106821528	382.24
7.33	202943464	379.59

(31) AR-1260-1 #2 (L7)		
R.T.	Response	Conc
5.25	137151638	412.62
5.44	165562006	419.11
5.58	154656774	413.31
6.05	129622358	416.78
6.29	279685425	420.94

Data Path : Z:\pestpcbsrv\HPCHEM1\ECD_Q\Data\PQ081224\
 Data File : PQ067870.D
 Signal(s) : Signal #1: ECD1A.ch Signal #2: ECD2B.ch
 Acq On : 12 Aug 2024 10:56
 Operator : YP\AJ
 Sample : AR1660CCC400
 Misc :
 ALS Vial : 3 Sample Multiplier: 1

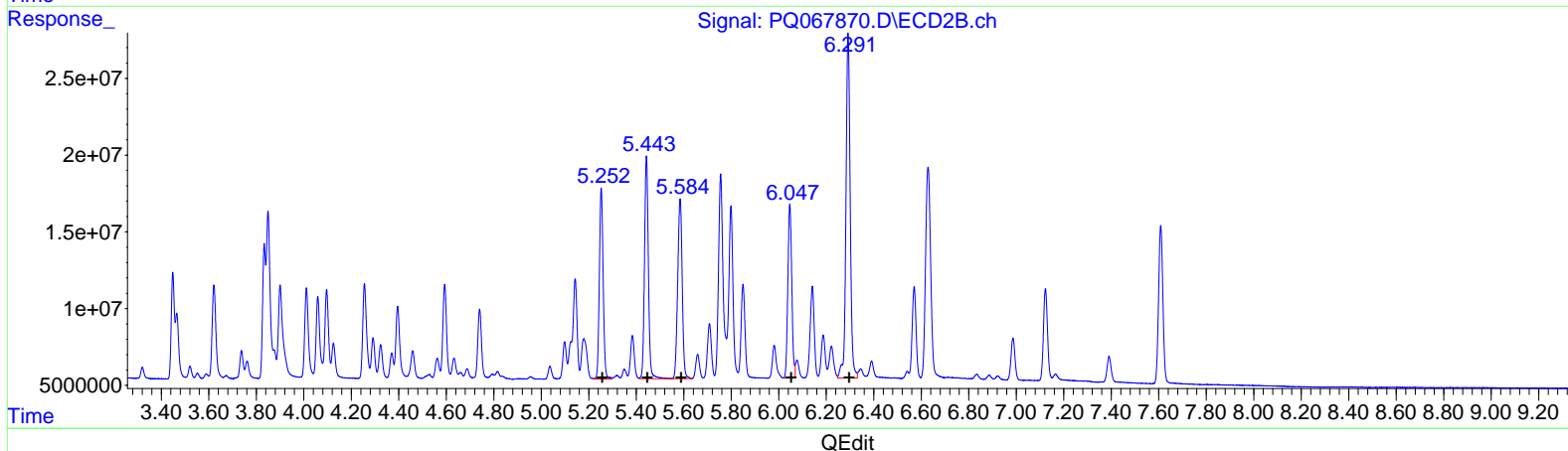
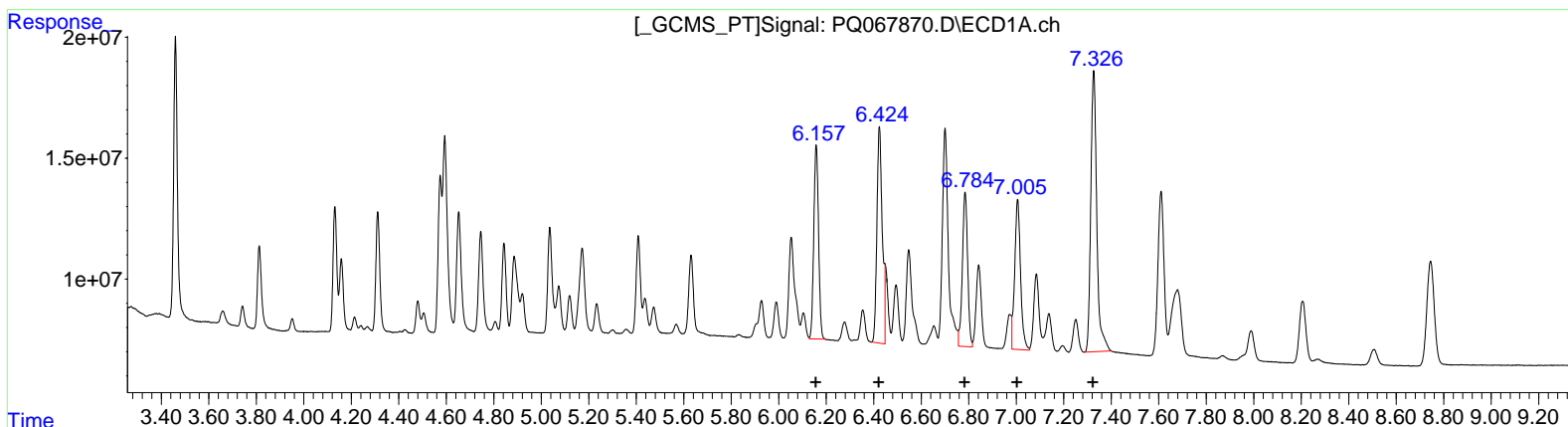
Instrument :
 ECD_Q
 LabSampleId :
 AR1660CCC400

Manual Integrations APPROVED

Reviewed By :Yogesh Patel 08/14/2024
 Supervised By :Ankita Jodhani 08/14/2024

Integration File signal 1: autoint1.e
 Integration File signal 2: autoint2.e
 Quant Time: Aug 12 13:27:37 2024
 Quant Method : Z:\pestpcbsrv\HPCHEM1\ECD_Q\Method\PQ072324CLP.M
 Quant Title : GC EXTRACTABLES
 QLast Update : Wed Jul 24 04:31:32 2024
 Response via : Initial Calibration
 Integrator: ChemStation

Volume Inj. : 1 µl
 Signal #1 Phase : ZB MR1 Signal #2 Phase: ZB MR2
 Signal #1 Info : 30Mx0.32mmx 0.5µm Signal #2 Info : 30M x 0.32mm x 0.25µm



QEdit

(31) AR-1260-1 #2 (L7)		
R.T.	Response	Conc
6.16	111602019	385.02
6.42	140183670	394.94
6.78	98087212	382.19
7.01	106821528	382.24
7.33	202943464	379.59

(31) AR-1260-1 #2 (L7)		
R.T.	Response	Conc
5.25	137151638	412.62
5.44	165562006	419.11
5.58	154656774	413.31
6.05	129622358	416.78
6.29	279685425	420.94