

Data Path : Z:\pestpcbsrv\HPCHEM1\ECD_Q\Data\PQ081319\
 Data File : PQ042406.D
 Signal(s) : Signal #1: ECD1A.ch Signal #2: ECD2B.ch
 Acq On : 13 Aug 2019 11:57
 Operator : SM\AJ
 Sample : K4183-02
 Misc :
 ALS Vial : 13 Sample Multiplier: 1

Instrument :
 ECD_Q
 ClientSampled :

Integration File signal 1: autoint1.e
 Integration File signal 2: autoint2.e
 Quant Time: Aug 14 07:48:54 2019
 Quant Method : Z:\pestpcbsrv\HPCHEM1\ECD_Q\Method\PQ072719CLP.M
 Quant Title : GC EXTRACTABLES
 QLast Update : Mon Jul 29 04:03:40 2019
 Response via : Initial Calibration
 Integrator: ChemStation

Volume Inj. : 1 µl
 Signal #1 Phase : ZB MR1 Signal #2 Phase: ZB MR2
 Signal #1 Info : 30Mx0.32mmx 0.5µm Signal #2 Info : 30M x 0.32mm x 0.25µm

Compound	RT#1	RT#2	Resp#1	Resp#2	ng/ml	ng/ml

System Monitoring Compounds						
1) SA Tetrachlo...	5.674	4.736	56198440	53582414	24.505	27.803
2) SA Decachlor...	12.060	10.485	276.6E6	218.0E6	32.809	45.071 #
Target Compounds						
3) L1 AR-1016-1	7.194	0.000	105.7E6	0	977.826	N.D. #
4) L1 AR-1016-2	7.194	0.000	105.7E6	0	675.200	N.D. #
5) L1 AR-1016-3	7.194	0.000	105.7E6	0	1092.625	N.D. #
13) L3 AR-1232-3	7.194	0.000	105.7E6	0	1583.013	N.D. #
15) L3 AR-1232-5	7.439	0.000	58541474	0	2724.092	N.D. #
16) L4 AR-1242-1	7.194	0.000	105.7E6	0	1181.536	N.D. #
17) L4 AR-1242-2	7.194	0.000	105.7E6	0	821.886	N.D. #
18) L4 AR-1242-3	7.194	0.000	105.7E6	0	1303.393	N.D. #
20) L4 AR-1242-5	8.149	0.000	1993083	0	22.463	N.D. #
21) L5 AR-1248-1	7.194	0.000	105.7E6	0	1425.587	N.D. #
22) L5 AR-1248-2	7.439	0.000	58541474	0	634.505	N.D. #
24) L5 AR-1248-4	8.149	0.000	1993083	0	12.747	N.D. #
25) L5 AR-1248-5	8.149	0.000	1993083	0	13.171	N.D. #
26) L6 AR-1254-1	8.149	0.000	1993083	0	14.327	N.D. #
27) L6 AR-1254-2	8.359	0.000	50284709	0	219.696	N.D. #
28) L6 AR-1254-3	8.728	0.000	23094334	0	84.463	N.D. #
29) L6 AR-1254-4	9.068	0.000	54298637	0	220.569	N.D. #
32) L7 AR-1260-2	9.121	0.000	165.2E6	0	654.889	N.D. #
33) L7 AR-1260-3	9.551	0.000	100.7E6	0	439.528	N.D. #
34) L7 AR-1260-4	9.772	0.000	58047978	0	227.334	N.D. #
35) L7 AR-1260-5	10.112	0.000	49497965	0	73.484	N.D. #
36) L8 AR-1262-1	9.644	0.000	78248257	0	509.114	N.D. #
37) L8 AR-1262-2	10.145	0.000	74645700	0	85.269	N.D. #
38) L8 AR-1262-3	10.424	9.272	189.3E6	5779169	298.045	18.267 #
40) L8 AR-1262-5	11.258	0.000	112.8E6	0	277.010	N.D. #
41) L9 AR-1268-1	10.424	9.272	189.3E6	5779169	132.857	5.055 #
43) L9 AR-1268-3	10.801	0.000	36296898	0	31.020	N.D. #
44) L9 AR-1268-4	11.258	0.000	112.8E6	0	207.145	N.D. #
45) L9 AR-1268-5	11.705	10.213	11858368	3891302	2.926	1.498 #

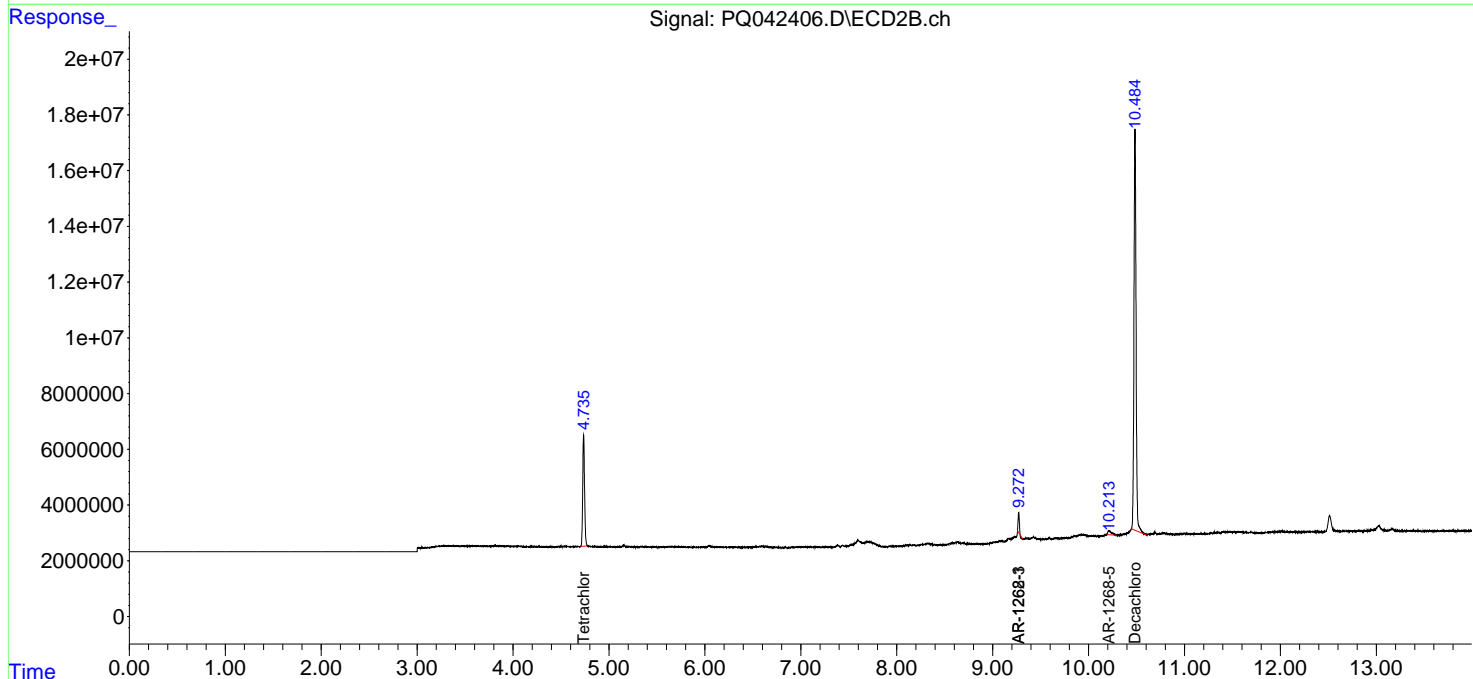
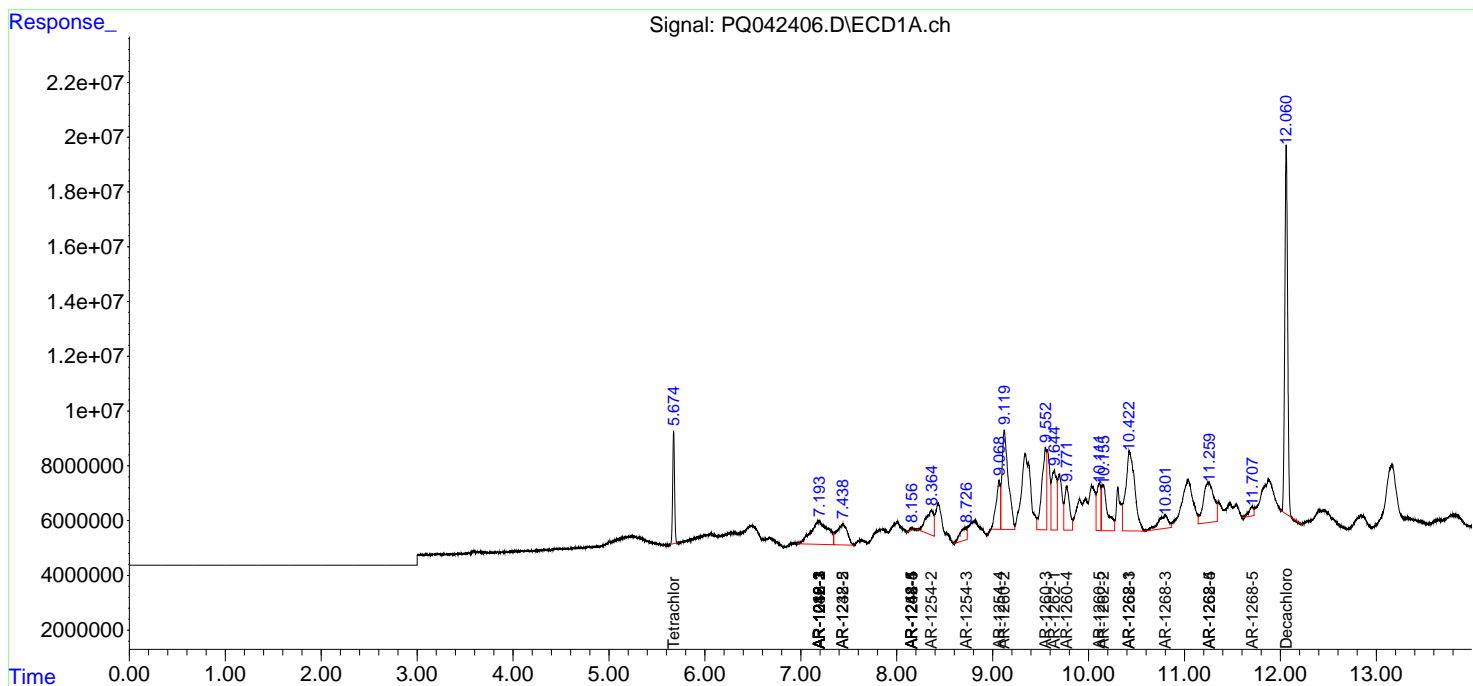
(f)=RT Delta > 1/2 Window (#)=Amounts differ by > 25% (m)=manual int.

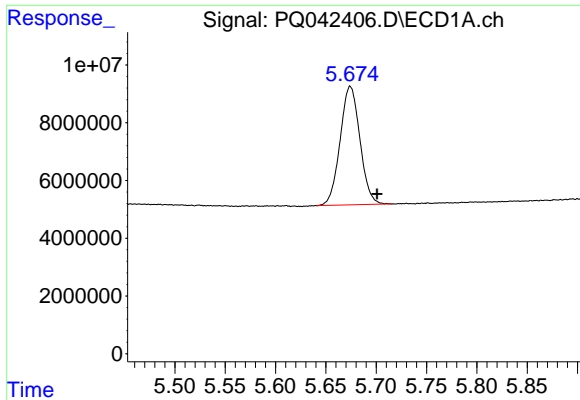
Data Path : Z:\pestpcbsrv\HPCHEM1\ECD_Q\Data\PQ081319\
 Data File : PQ042406.D
 Signal(s) : Signal #1: ECD1A.ch Signal #2: ECD2B.ch
 Acq On : 13 Aug 2019 11:57
 Operator : SM\AJ
 Sample : K4183-02
 Misc :
 ALS Vial : 13 Sample Multiplier: 1

Instrument :
 ECD_Q
 ClientSampled :

Integration File signal 1: autoint1.e
 Integration File signal 2: autoint2.e
 Quant Time: Aug 14 07:48:54 2019
 Quant Method : Z:\pestpcbsrv\HPCHEM1\ECD_Q\Method\PQ072719CLP.M
 Quant Title : GC EXTRACTABLES
 QLast Update : Mon Jul 29 04:03:40 2019
 Response via : Initial Calibration
 Integrator: ChemStation

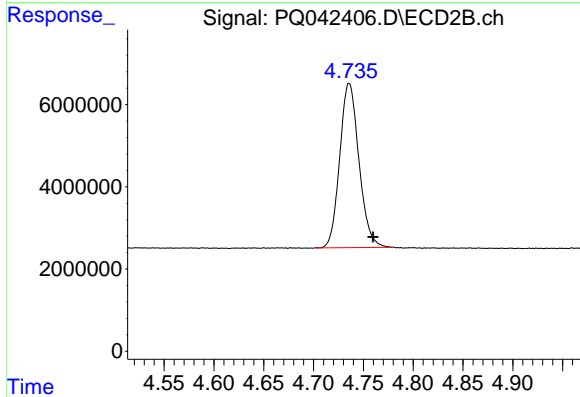
Volume Inj. : 1 µl
 Signal #1 Phase : ZB MR1 Signal #2 Phase: ZB MR2
 Signal #1 Info : 30Mx0.32mmx 0.5µm Signal #2 Info : 30M x 0.32mm x 0.25µm



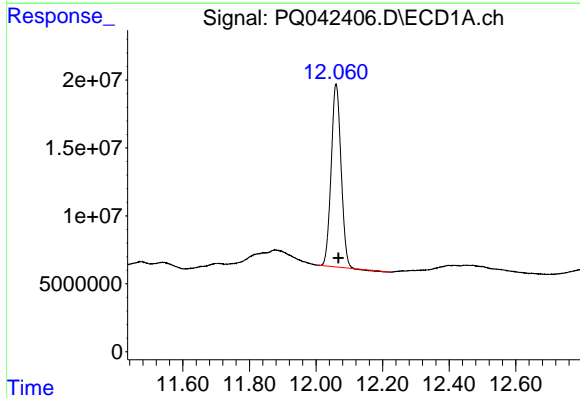


#1 Tetrachloro-m-xylene
 R.T.: 5.674 min
 Delta R.T.: -0.027 min
 Response: 56198440
 Conc: 24.50 ng/ml

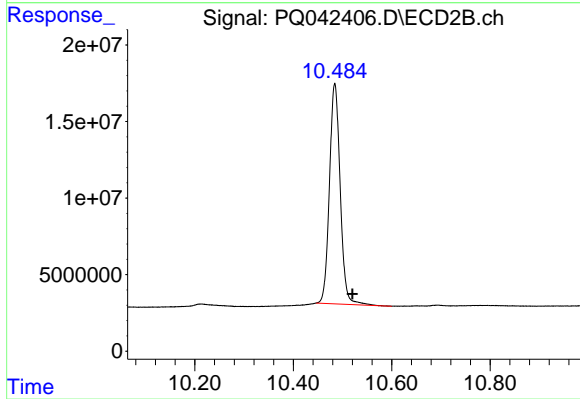
Instrument :
 ECD_Q
 ClientSampleId :



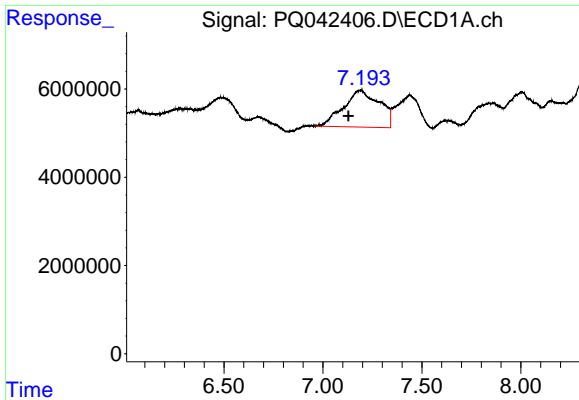
#1 Tetrachloro-m-xylene
 R.T.: 4.736 min
 Delta R.T.: -0.024 min
 Response: 53582414
 Conc: 27.80 ng/ml



#2 Decachlorobiphenyl
 R.T.: 12.060 min
 Delta R.T.: -0.007 min
 Response: 276622263
 Conc: 32.81 ng/ml



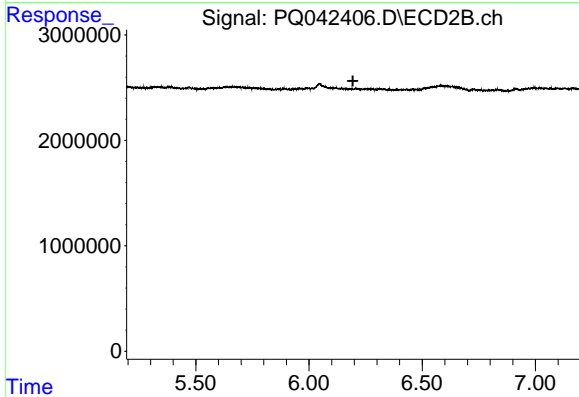
#2 Decachlorobiphenyl
 R.T.: 10.485 min
 Delta R.T.: -0.035 min
 Response: 218026288
 Conc: 45.07 ng/ml



#3 AR-1016-1

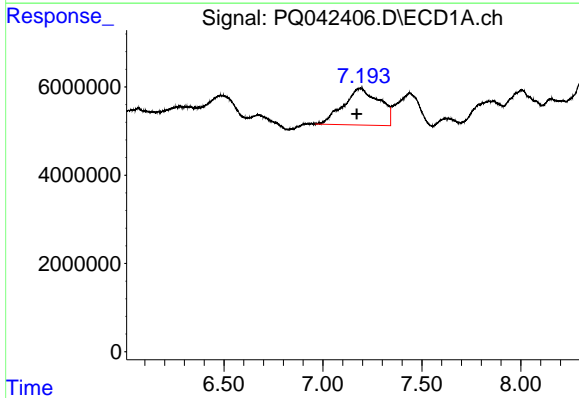
R.T.: 7.194 min
 Delta R.T.: 0.065 min
 Response: 105687396
 Conc: 977.83 ng/ml

Instrument :
 ECD_Q
 ClientSampled :



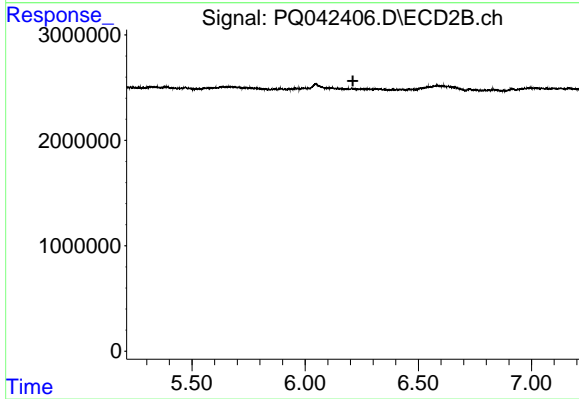
#3 AR-1016-1

R.T.: 0.000 min
 Exp R.T. : 6.194 min
 Response: 0
 Conc: N.D.



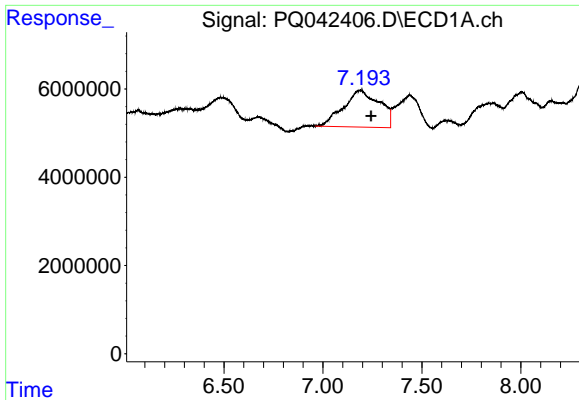
#4 AR-1016-2

R.T.: 7.194 min
 Delta R.T.: 0.021 min
 Response: 105687396
 Conc: 675.20 ng/ml



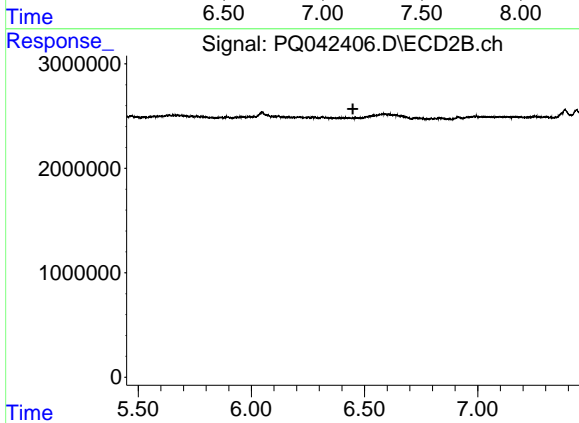
#4 AR-1016-2

R.T.: 0.000 min
 Exp R.T. : 6.211 min
 Response: 0
 Conc: N.D.

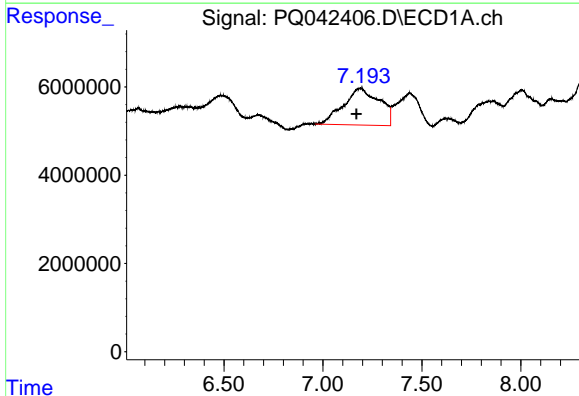


#5 AR-1016-3
 R.T.: 7.194 min
 Delta R.T.: -0.049 min
 Response: 105687396
 Conc: 1092.62 ng/ml

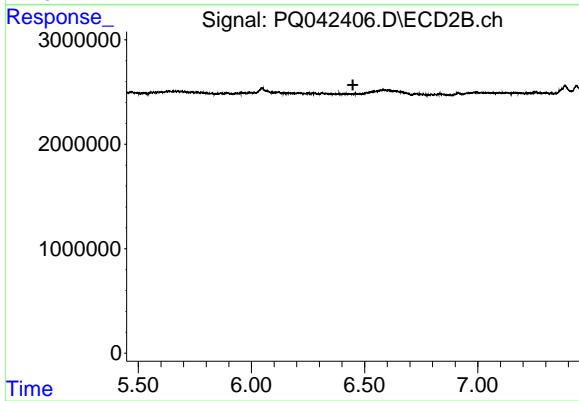
Instrument :
 ECD_Q
 ClientSampled :



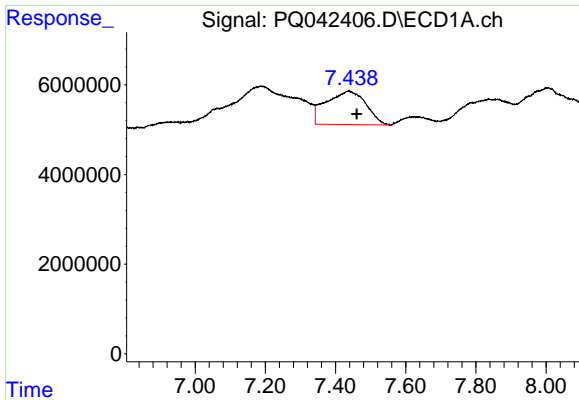
#5 AR-1016-3
 R.T.: 0.000 min
 Exp R.T. : 6.448 min
 Response: 0
 Conc: N.D.



#13 AR-1232-3
 R.T.: 7.194 min
 Delta R.T.: 0.023 min
 Response: 105687396
 Conc: 1583.01 ng/ml



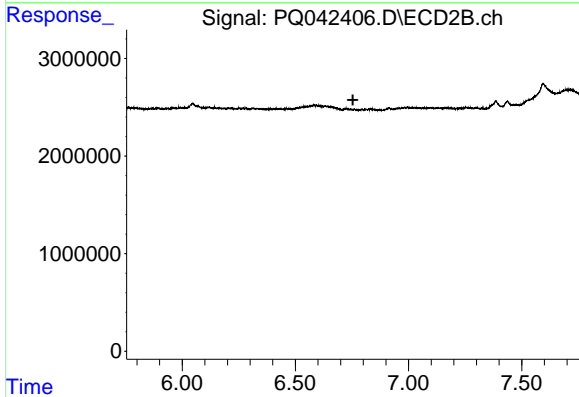
#13 AR-1232-3
 R.T.: 0.000 min
 Exp R.T. : 6.448 min
 Response: 0
 Conc: N.D.



#15 AR-1232-5

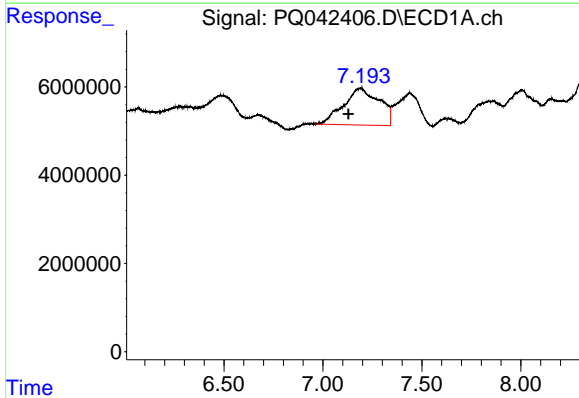
R.T.: 7.439 min
 Delta R.T.: -0.022 min
 Response: 58541474
 Conc: 2724.09 ng/ml

Instrument :
 ECD_Q
 ClientSampleId :



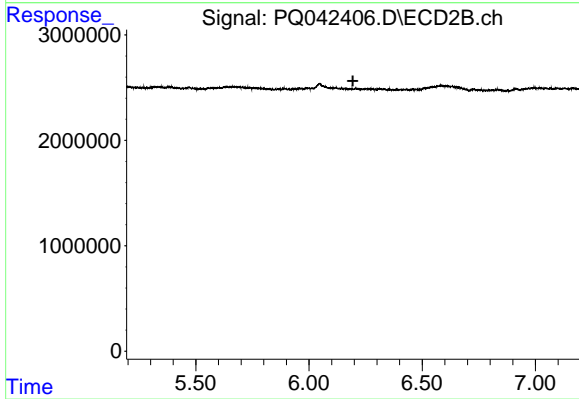
#15 AR-1232-5

R.T.: 0.000 min
 Exp R.T. : 6.754 min
 Response: 0
 Conc: N.D.



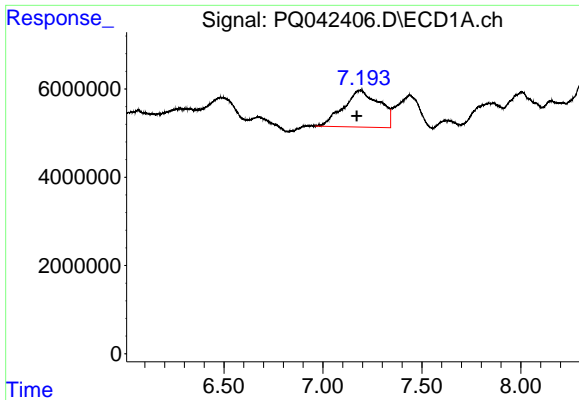
#16 AR-1242-1

R.T.: 7.194 min
 Delta R.T.: 0.065 min
 Response: 105687396
 Conc: 1181.54 ng/ml



#16 AR-1242-1

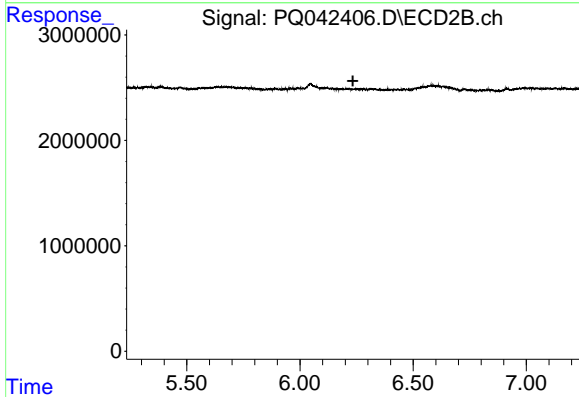
R.T.: 0.000 min
 Exp R.T. : 6.194 min
 Response: 0
 Conc: N.D.



#17 AR-1242-2

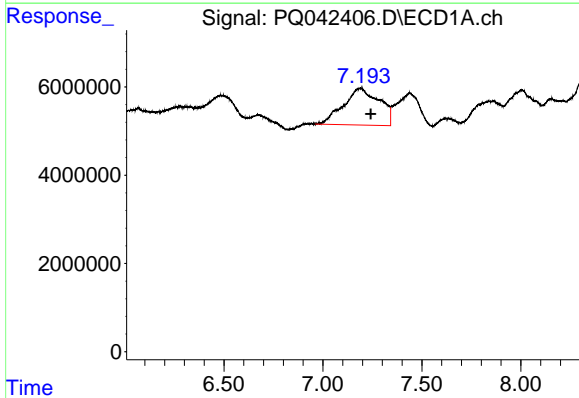
R.T.: 7.194 min
 Delta R.T.: 0.022 min
 Response: 105687396
 Conc: 821.89 ng/ml

Instrument :
 ECD_Q
 ClientSampled :



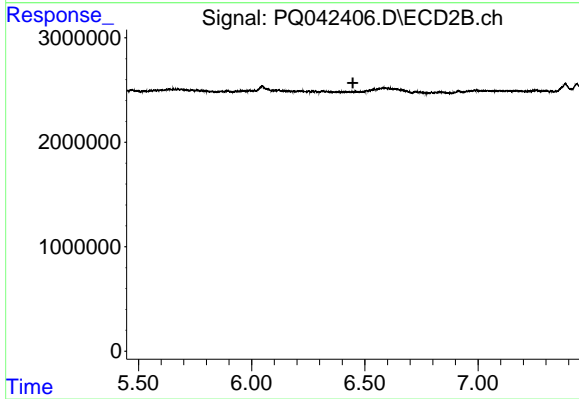
#17 AR-1242-2

R.T.: 0.000 min
 Exp R.T. : 6.234 min
 Response: 0
 Conc: N.D.



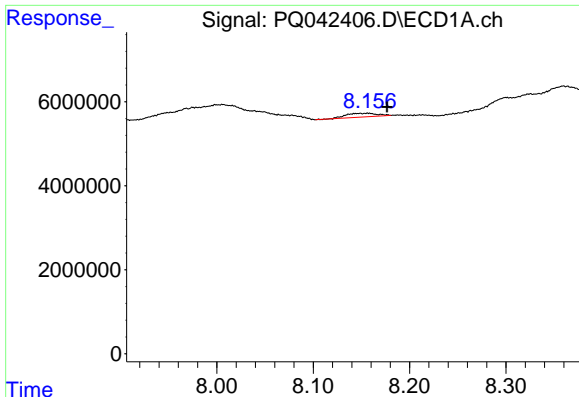
#18 AR-1242-3

R.T.: 7.194 min
 Delta R.T.: -0.048 min
 Response: 105687396
 Conc: 1303.39 ng/ml



#18 AR-1242-3

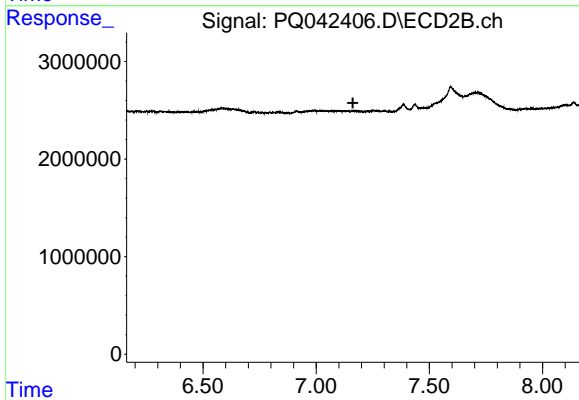
R.T.: 0.000 min
 Exp R.T. : 6.447 min
 Response: 0
 Conc: N.D.



#20 AR-1242-5

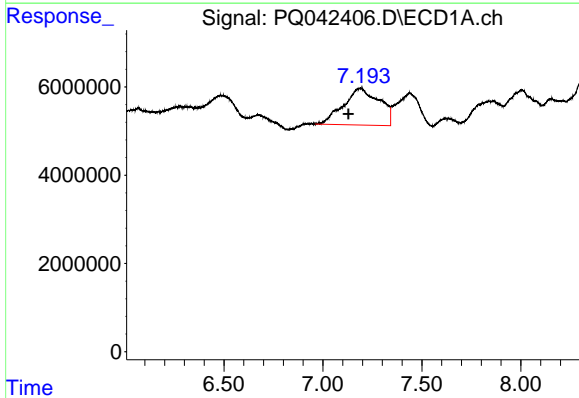
R.T.: 8.149 min
 Delta R.T.: -0.028 min
 Response: 1993083
 Conc: 22.46 ng/ml

Instrument :
 ECD_Q
 ClientSampleId :



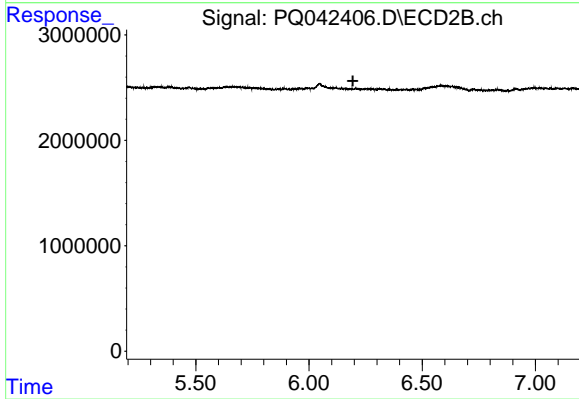
#20 AR-1242-5

R.T.: 0.000 min
 Exp R.T. : 7.162 min
 Response: 0
 Conc: N.D.



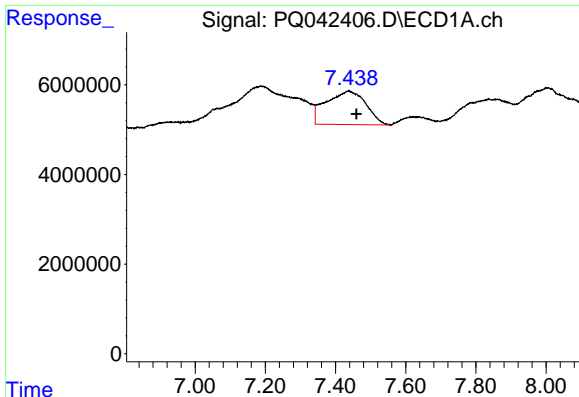
#21 AR-1248-1

R.T.: 7.194 min
 Delta R.T.: 0.066 min
 Response: 105687396
 Conc: 1425.59 ng/ml



#21 AR-1248-1

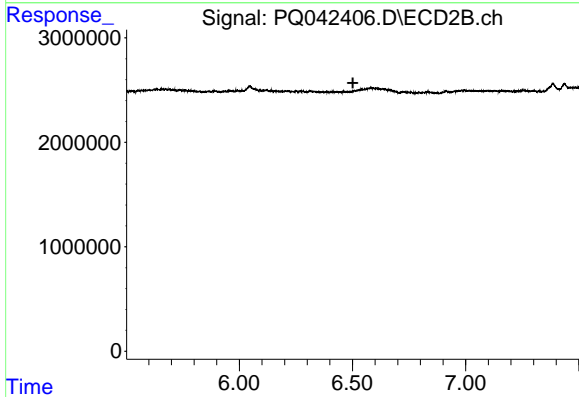
R.T.: 0.000 min
 Exp R.T. : 6.194 min
 Response: 0
 Conc: N.D.



#22 AR-1248-2

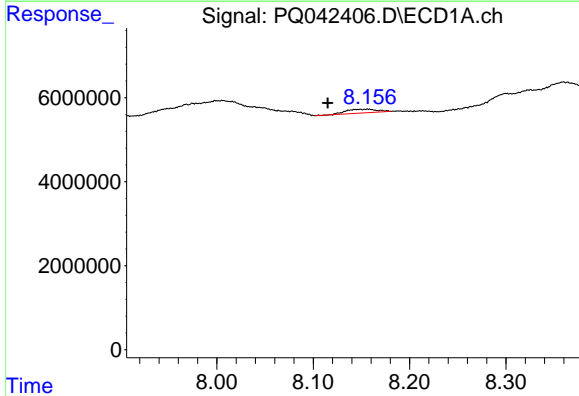
R.T.: 7.439 min
 Delta R.T.: -0.021 min
 Response: 58541474
 Conc: 634.51 ng/ml

Instrument :
 ECD_Q
 ClientSampled :



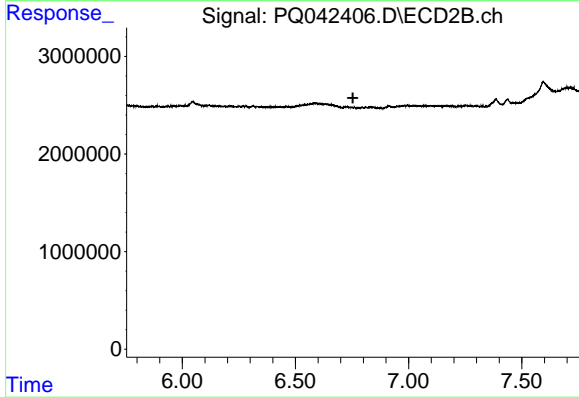
#22 AR-1248-2

R.T.: 0.000 min
 Exp R.T. : 6.502 min
 Response: 0
 Conc: N.D.



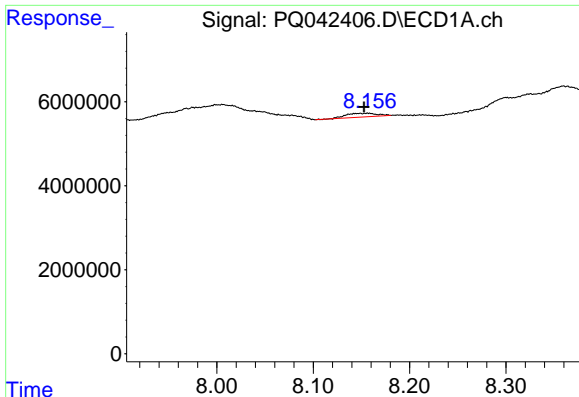
#24 AR-1248-4

R.T.: 8.149 min
 Delta R.T.: 0.034 min
 Response: 1993083
 Conc: 12.75 ng/ml



#24 AR-1248-4

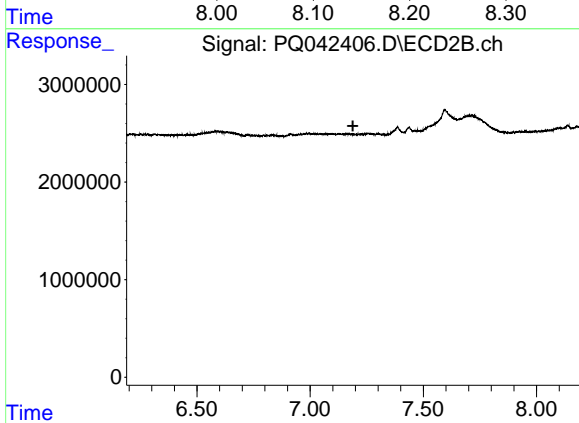
R.T.: 0.000 min
 Exp R.T. : 6.754 min
 Response: 0
 Conc: N.D.



#25 AR-1248-5

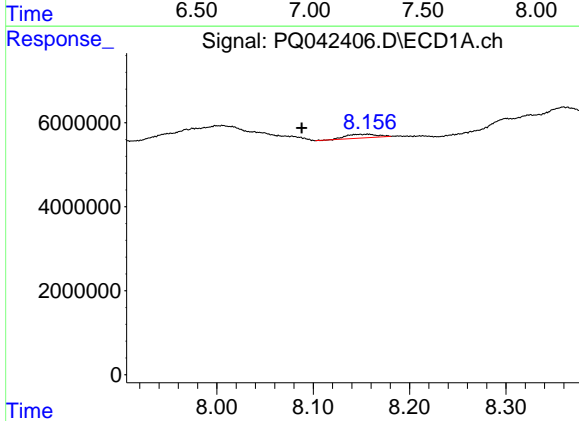
R.T.: 8.149 min
 Delta R.T.: -0.004 min
 Response: 1993083
 Conc: 13.17 ng/ml

Instrument :
 ECD_Q
 ClientSampled :



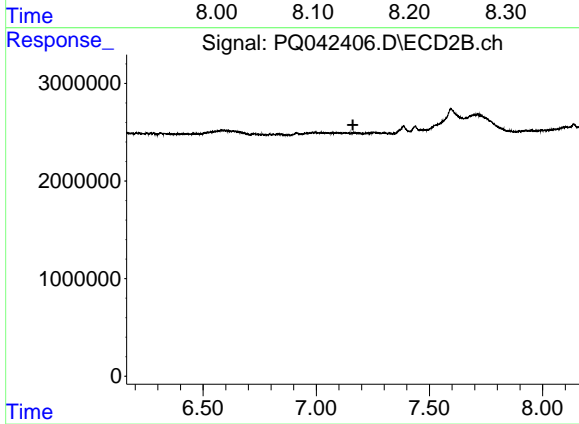
#25 AR-1248-5

R.T.: 0.000 min
 Exp R.T. : 7.189 min
 Response: 0
 Conc: N.D.



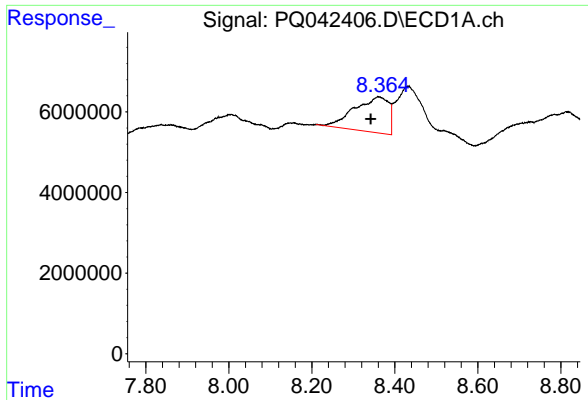
#26 AR-1254-1

R.T.: 8.149 min
 Delta R.T.: 0.061 min
 Response: 1993083
 Conc: 14.33 ng/ml



#26 AR-1254-1

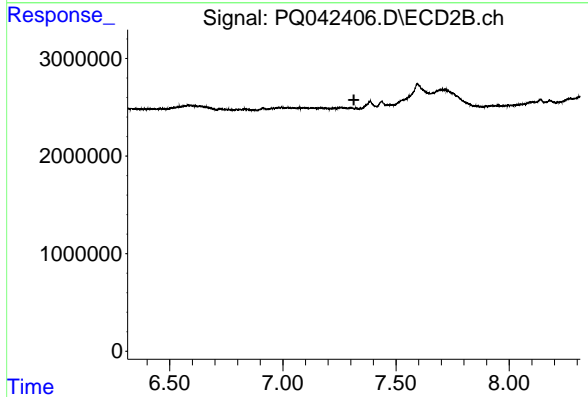
R.T.: 0.000 min
 Exp R.T. : 7.162 min
 Response: 0
 Conc: N.D.



#27 AR-1254-2

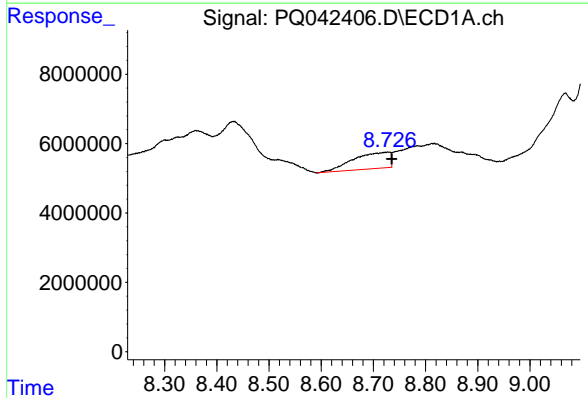
R.T.: 8.359 min
 Delta R.T.: 0.017 min
 Response: 50284709
 Conc: 219.70 ng/ml

Instrument :
 ECD_Q
 ClientSampled :



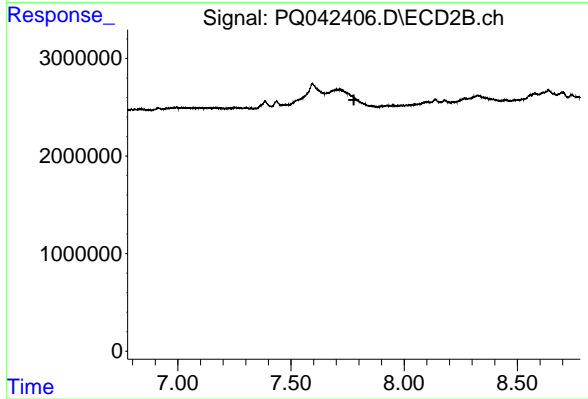
#27 AR-1254-2

R.T.: 0.000 min
 Exp R.T. : 7.314 min
 Response: 0
 Conc: N.D.



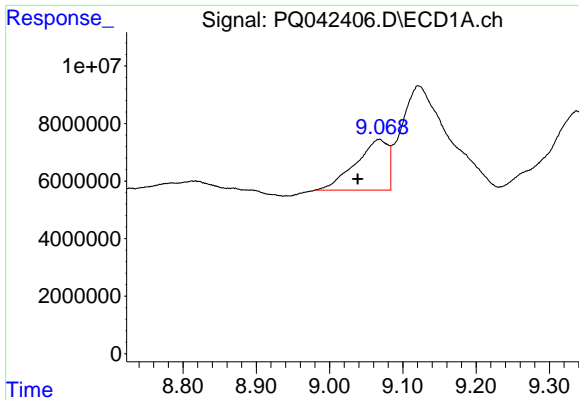
#28 AR-1254-3

R.T.: 8.728 min
 Delta R.T.: -0.007 min
 Response: 23094334
 Conc: 84.46 ng/ml



#28 AR-1254-3

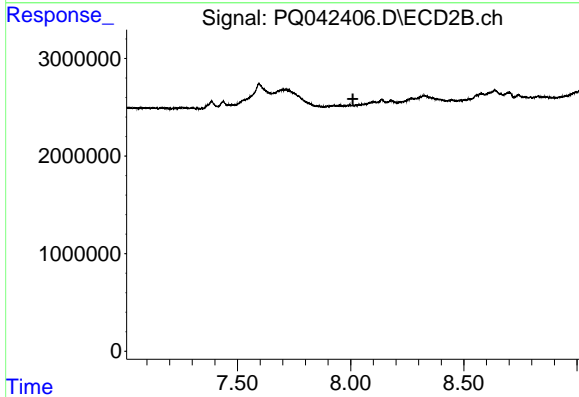
R.T.: 0.000 min
 Exp R.T. : 7.778 min
 Response: 0
 Conc: N.D.



#29 AR-1254-4

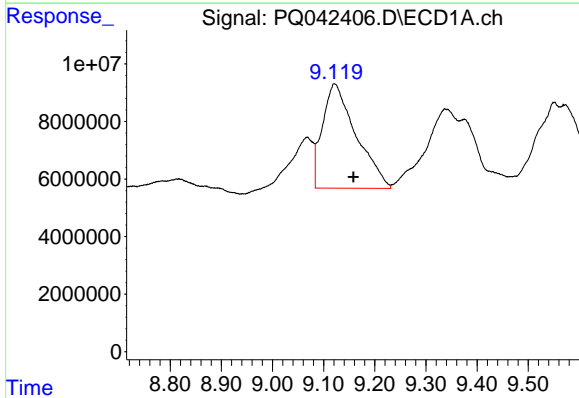
R.T.: 9.068 min
 Delta R.T.: 0.029 min
 Response: 54298637
 Conc: 220.57 ng/ml

Instrument :
 ECD_Q
 ClientSampled :



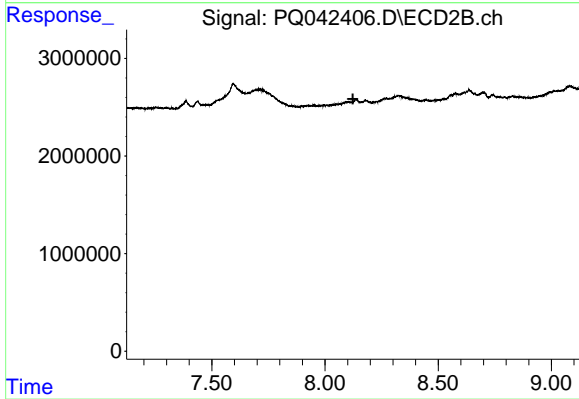
#29 AR-1254-4

R.T.: 0.000 min
 Exp R.T. : 8.010 min
 Response: 0
 Conc: N.D.



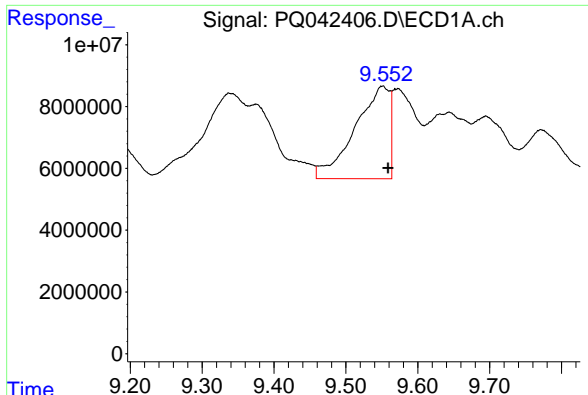
#32 AR-1260-2

R.T.: 9.121 min
 Delta R.T.: -0.037 min
 Response: 165212357
 Conc: 654.89 ng/ml



#32 AR-1260-2

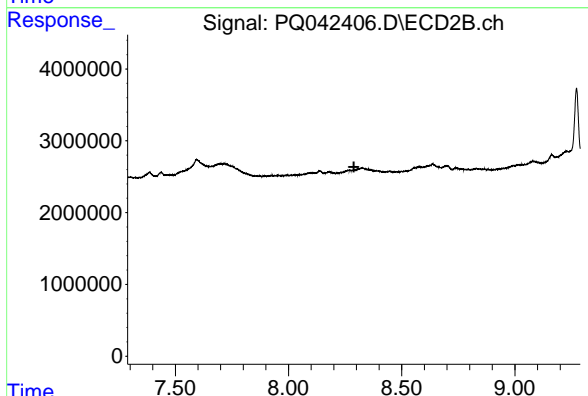
R.T.: 0.000 min
 Exp R.T. : 8.123 min
 Response: 0
 Conc: N.D.



#33 AR-1260-3

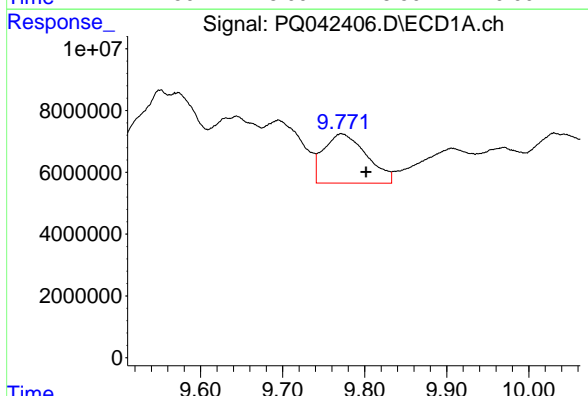
R.T.: 9.551 min
 Delta R.T.: -0.007 min
 Response: 100710966
 Conc: 439.53 ng/ml

Instrument :
 ECD_Q
 ClientSampleId :



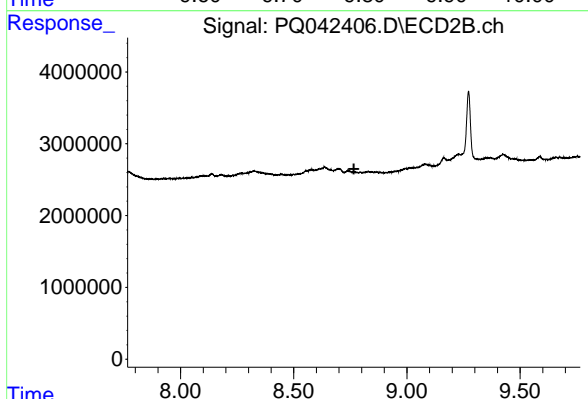
#33 AR-1260-3

R.T.: 0.000 min
 Exp R.T. : 8.289 min
 Response: 0
 Conc: N.D.



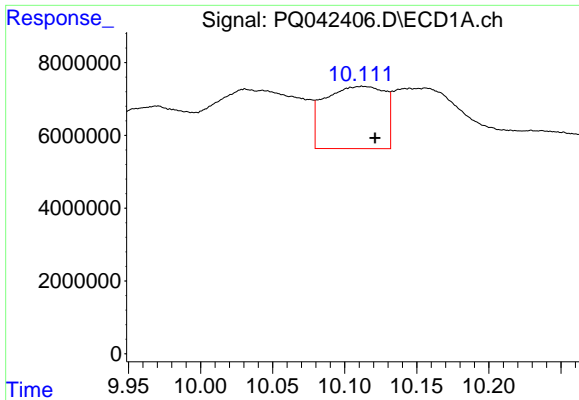
#34 AR-1260-4

R.T.: 9.772 min
 Delta R.T.: -0.030 min
 Response: 58047978
 Conc: 227.33 ng/ml



#34 AR-1260-4

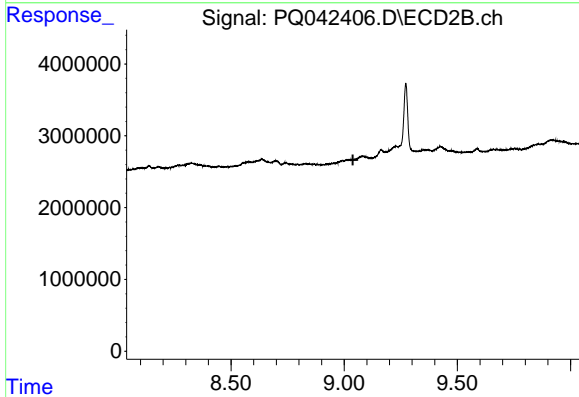
R.T.: 0.000 min
 Exp R.T. : 8.766 min
 Response: 0
 Conc: N.D.



#35 AR-1260-5

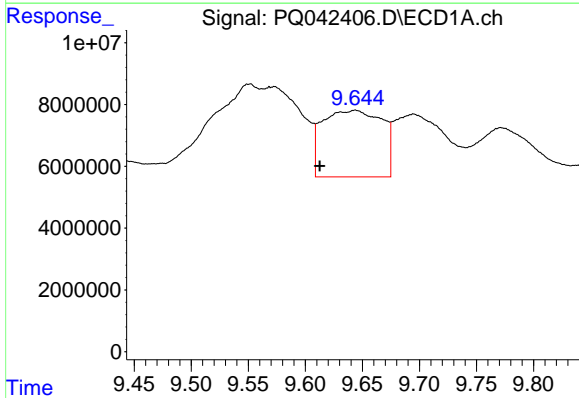
R.T.: 10.112 min
 Delta R.T.: -0.009 min
 Response: 49497965
 Conc: 73.48 ng/ml

Instrument :
 ECD_Q
 ClientSampled :



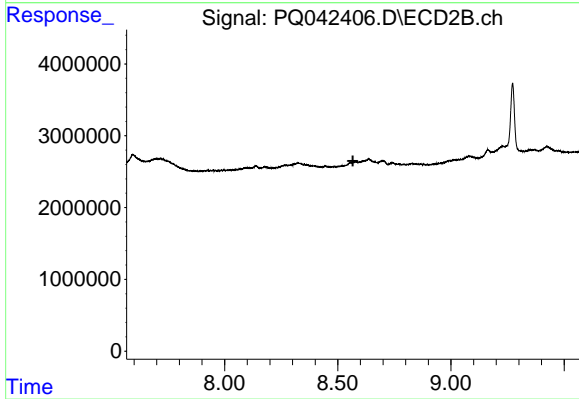
#35 AR-1260-5

R.T.: 0.000 min
 Exp R.T. : 9.039 min
 Response: 0
 Conc: N.D.



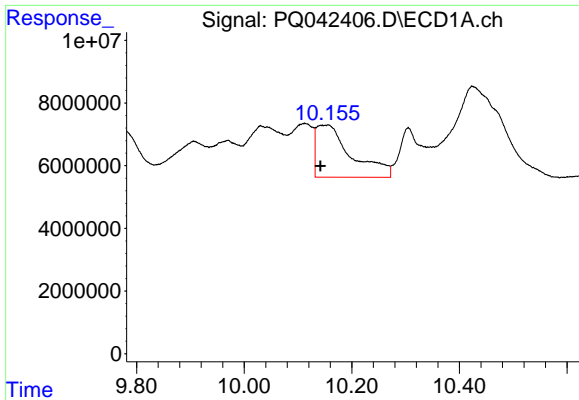
#36 AR-1262-1

R.T.: 9.644 min
 Delta R.T.: 0.031 min
 Response: 78248257
 Conc: 509.11 ng/ml



#36 AR-1262-1

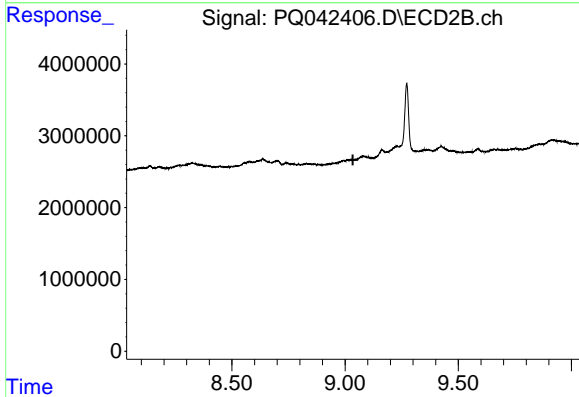
R.T.: 0.000 min
 Exp R.T. : 8.567 min
 Response: 0
 Conc: N.D.



#37 AR-1262-2

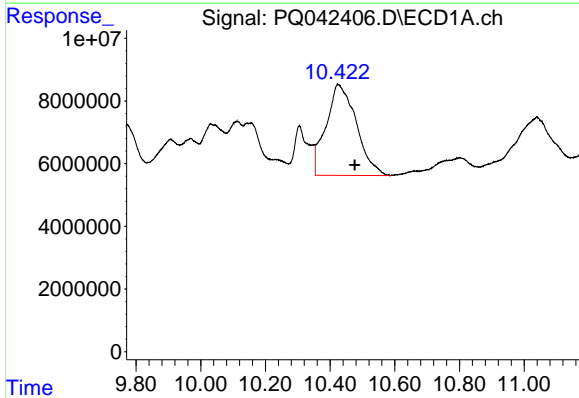
R.T.: 10.145 min
 Delta R.T.: 0.003 min
 Response: 74645700
 Conc: 85.27 ng/ml

Instrument :
 ECD_Q
 ClientSampleId :



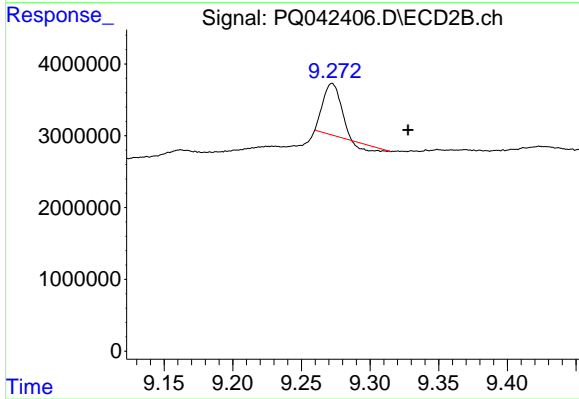
#37 AR-1262-2

R.T.: 0.000 min
 Exp R.T. : 9.034 min
 Response: 0
 Conc: N.D.



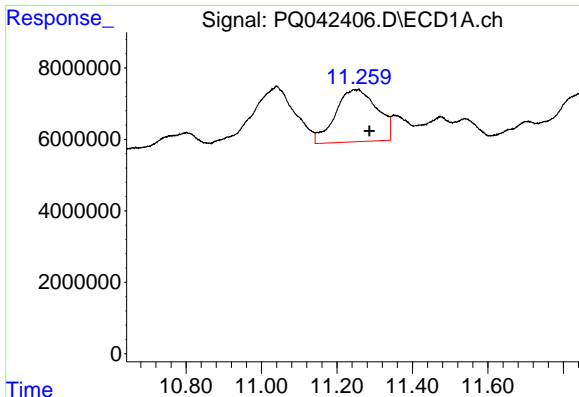
#38 AR-1262-3

R.T.: 10.424 min
 Delta R.T.: -0.052 min
 Response: 189261653
 Conc: 298.05 ng/ml



#38 AR-1262-3

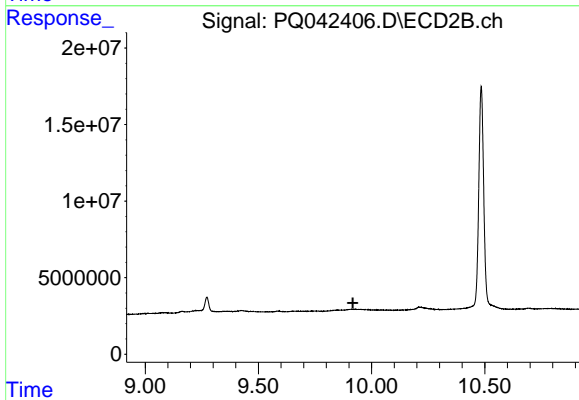
R.T.: 9.272 min
 Delta R.T.: -0.055 min
 Response: 5779169
 Conc: 18.27 ng/ml



#40 AR-1262-5

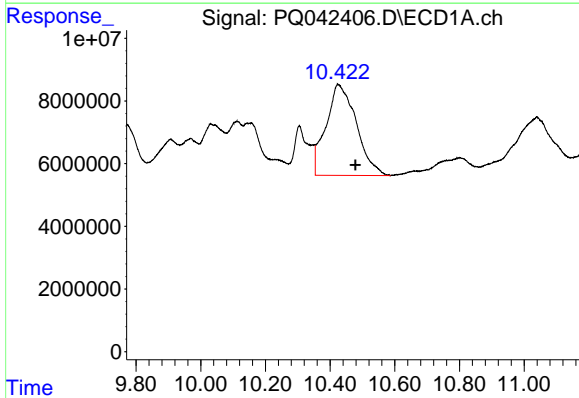
R.T.: 11.258 min
 Delta R.T.: -0.028 min
 Response: 112773598
 Conc: 277.01 ng/ml

Instrument :
 ECD_Q
 ClientSampled :



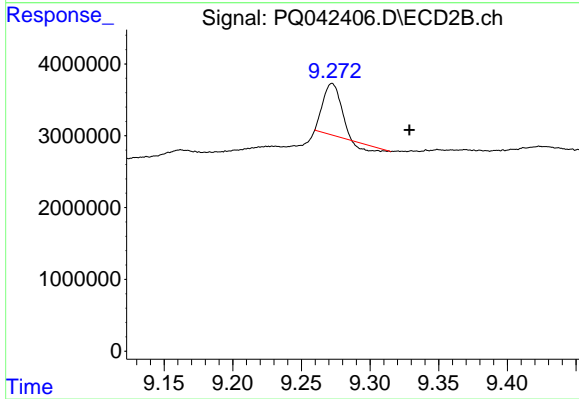
#40 AR-1262-5

R.T.: 0.000 min
 Exp R.T. : 9.918 min
 Response: 0
 Conc: N.D.



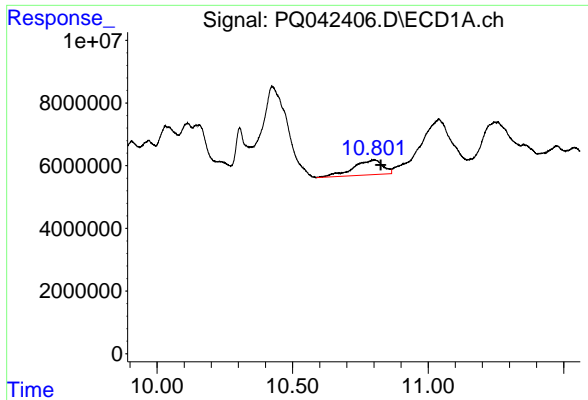
#41 AR-1268-1

R.T.: 10.424 min
 Delta R.T.: -0.054 min
 Response: 189261653
 Conc: 132.86 ng/ml



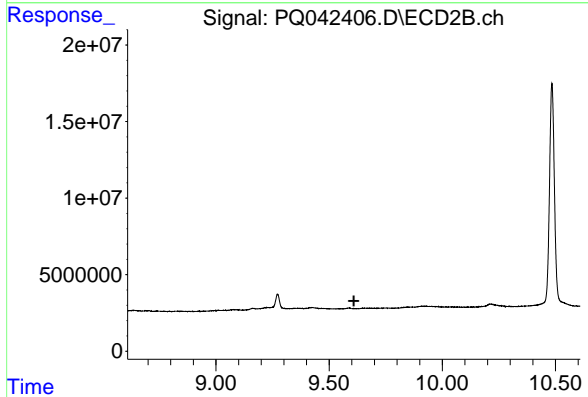
#41 AR-1268-1

R.T.: 9.272 min
 Delta R.T.: -0.056 min
 Response: 5779169
 Conc: 5.06 ng/ml

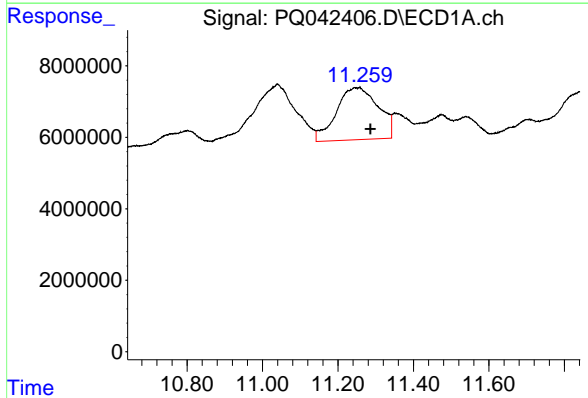


#43 AR-1268-3
 R.T.: 10.801 min
 Delta R.T.: -0.024 min
 Response: 36296898
 Conc: 31.02 ng/ml

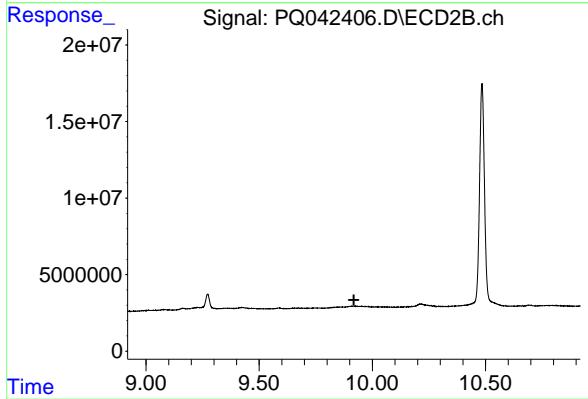
Instrument :
 ECD_Q
 ClientSampled :



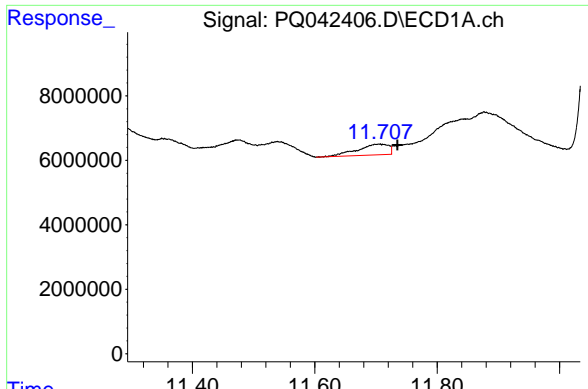
#43 AR-1268-3
 R.T.: 0.000 min
 Exp R.T. : 9.609 min
 Response: 0
 Conc: N.D.



#44 AR-1268-4
 R.T.: 11.258 min
 Delta R.T.: -0.028 min
 Response: 112773598
 Conc: 207.15 ng/ml



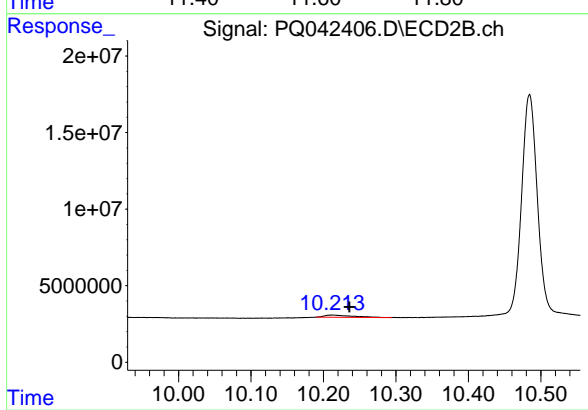
#44 AR-1268-4
 R.T.: 0.000 min
 Exp R.T. : 9.918 min
 Response: 0
 Conc: N.D.



#45 AR-1268-5

R.T.: 11.705 min
Delta R.T.: -0.030 min
Response: 11858368
Conc: 2.93 ng/ml

Instrument :
ECD_Q
ClientSampleId :



#45 AR-1268-5

R.T.: 10.213 min
Delta R.T.: -0.023 min
Response: 3891302
Conc: 1.50 ng/ml