

Data Path : Z:\pestpcbsrv\HPCHEM1\ECD_Q\Data\PQ081324\
 Data File : PQ067919.D
 Signal(s) : Signal #1: ECD1A.ch Signal #2: ECD2B.ch
 Acq On : 13 Aug 2024 02:19
 Operator : YP\AJ
 Sample : AR1254CCC500
 Misc :
 ALS Vial : 6 Sample Multiplier: 1

Instrument :
 ECD_Q
 ClientSampleId :
 AR1254CCC500

Integration File signal 1: autoint1.e
 Integration File signal 2: autoint2.e
 Quant Time: Aug 13 10:32:24 2024
 Quant Method : Z:\pestpcbsrv\HPCHEM1\ECD_Q\Method\PQ080524.M
 Quant Title : GC EXTRACTABLES
 QLast Update : Fri Aug 09 02:37:44 2024
 Response via : Initial Calibration
 Integrator: ChemStation

Volume Inj. : 2 µl
 Signal #1 Phase : ZB-MR2 Signal #2 Phase: ZB-MR2
 Signal #1 Info : 30Mx0.32mmx 0.50µ Signal #2 Info : 30M x 0.32mm x 0.25µm

Compound	RT#1	RT#2	Resp#1	Resp#2	ng/ml	ng/ml

System Monitoring Compounds						
1) SA Tetrachlo...	3.459	2.826	290.3E6	344.4E6	48.924	54.310
2) SA Decachlor...	8.735	7.606	199.8E6	298.9E6	51.861	53.041
Target Compounds						
3) L1 AR-1016-1	4.572	3.833	2249768	3238209	13.611	18.372 #
4) L1 AR-1016-2	4.596	3.849	2990871	2753254	10.158	9.442
5) L1 AR-1016-3	4.649	4.011	975195	2830748	5.109	17.981 #
6) L1 AR-1016-4	4.738	4.058	1211934	74753113	8.056	503.045 #
7) L1 AR-1016-5	5.034	4.254	34494658	45219901	235.999	264.343
8) L2 AR-1221-1	0.000	3.029	0	573264	N.D.	7.755 #
9) L2 AR-1221-2	3.740	3.097	4626847	5633517	80.895	101.150 #
10) L2 AR-1221-3	3.813	3.174	1248019	1147867	7.472	6.350
11) L3 AR-1232-1	3.813	3.174	1248019	1147867	9.160	7.812
12) L3 AR-1232-2	4.308	3.849	1330140	2753254	18.405	20.296
13) L3 AR-1232-3	4.596	4.011	2990871	2830748	21.203	37.378 #
14) L3 AR-1232-4	4.738	4.095	1211934	23446249	17.278	339.705 #
15) L3 AR-1232-5	4.841	4.254	59270796	45219901	1215.382	594.744 #
16) L4 AR-1242-1	4.572	3.833	2249768	3238209	16.716	22.590 #
17) L4 AR-1242-2	4.596	3.849	2990871	2753254	12.772	11.750
18) L4 AR-1242-3	4.649	4.011	975195	2830748	6.504	21.926 #
19) L4 AR-1242-4	4.738	4.095	1211934	23446249	10.390	179.551 #
20) L4 AR-1242-5	5.473	4.592	29858224	177.6E6	263.048	1162.145 #
21) L5 AR-1248-1	4.572	3.833	2249768	3238209	21.546	28.477 #
22) L5 AR-1248-2	4.841	4.058	59270796	74753113	351.055	357.110
23) L5 AR-1248-3	5.034	4.095	34494658	23446249	170.030	118.457 #
24) L5 AR-1248-4	5.435	4.254	47829683	45219901	251.604	191.734
25) L5 AR-1248-5	5.473	4.632	29858224	20525386	148.944	106.471 #
26) L6 AR-1254-1	5.407	4.592	109.2E6	177.6E6	490.706	528.754
27) L6 AR-1254-2	5.628	4.740	154.3E6	161.4E6	477.971	524.421
28) L6 AR-1254-3	5.987	5.123	168.7E6	244.3E6	514.976	547.660
29) L6 AR-1254-4	6.278	5.350	116.6E6	137.8E6	581.693	610.895
30) L6 AR-1254-5	6.698	5.755	175.5E6	233.6E6	697.993	567.918
31) L7 AR-1260-1	6.155	5.253	70425270	124.2E6	257.039	365.334 #
32) L7 AR-1260-2	6.422	5.442	75614932	102.4E6	234.546	261.468
33) L7 AR-1260-3	6.778	5.580	6571867	109.9E6	28.694	292.370 #
34) L7 AR-1260-4	6.979	6.046	51994164	13294993	203.838	45.958 #
35) L7 AR-1260-5	7.321	6.291	17196910	30550789	38.850	51.280 #
36) L8 AR-1262-1	6.778	5.818	6571867	21980155	19.283	49.222 #
37) L8 AR-1262-2	7.321	6.291	17196910	30550789	31.784	44.667 #
38) L8 AR-1262-3	7.607	6.569	14850883	1169130	45.299	3.870 #
39) L8 AR-1262-4	7.649	6.623	3363433	27947524	12.577	53.102 #
40) L8 AR-1262-5	0.000	7.121	0	1749898	N.D.	8.172 #
41) L9 AR-1268-1	7.607	6.569	14850883	1169130	25.362	1.389 #

Data Path : Z:\pestpcbsrv\HPCHEM1\ECD_Q\Data\PQ081324\
 Data File : PQ067919.D
 Signal(s) : Signal #1: ECD1A.ch Signal #2: ECD2B.ch
 Acq On : 13 Aug 2024 02:19
 Operator : YP\AJ
 Sample : AR1254CCC500
 Misc :
 ALS Vial : 6 Sample Multiplier: 1

Instrument :
 ECD_Q
 ClientSampleId :
 AR1254CCC500

Integration File signal 1: autoint1.e
 Integration File signal 2: autoint2.e
 Quant Time: Aug 13 10:32:24 2024
 Quant Method : Z:\pestpcbsrv\HPCHEM1\ECD_Q\Method\PQ080524.M
 Quant Title : GC EXTRACTABLES
 QLast Update : Fri Aug 09 02:37:44 2024
 Response via : Initial Calibration
 Integrator: ChemStation

Volume Inj. : 2 µl
 Signal #1 Phase : ZB-MR1 Signal #2 Phase: ZB-MR2
 Signal #1 Info : 30Mx0.32mmx 0.50µ Signal #2 Info : 30M x 0.32mm x 0.25µm

	Compound	RT#1	RT#2	Resp#1	Resp#2	ng/ml	ng/ml
42)	L9 AR-1268-2	7.649f	6.623	3363433	27947524	6.441	36.491 #
43)	L9 AR-1268-3	0.000	6.831	0	1028311	N.D.	1.474 #
44)	L9 AR-1268-4	0.000	7.121	0	1749898	N.D.	7.445 #
45)	L9 AR-1268-5	8.496	7.389	1278975	2239114	1.032	1.168

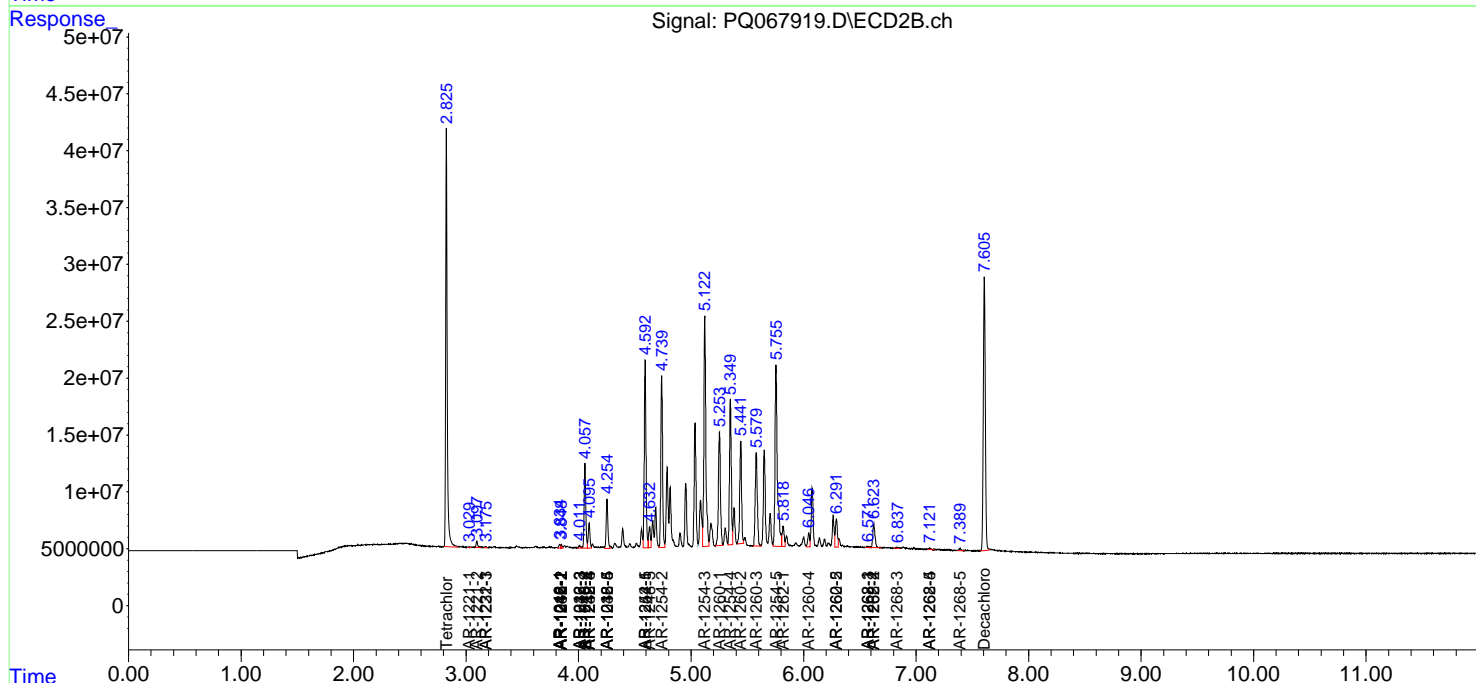
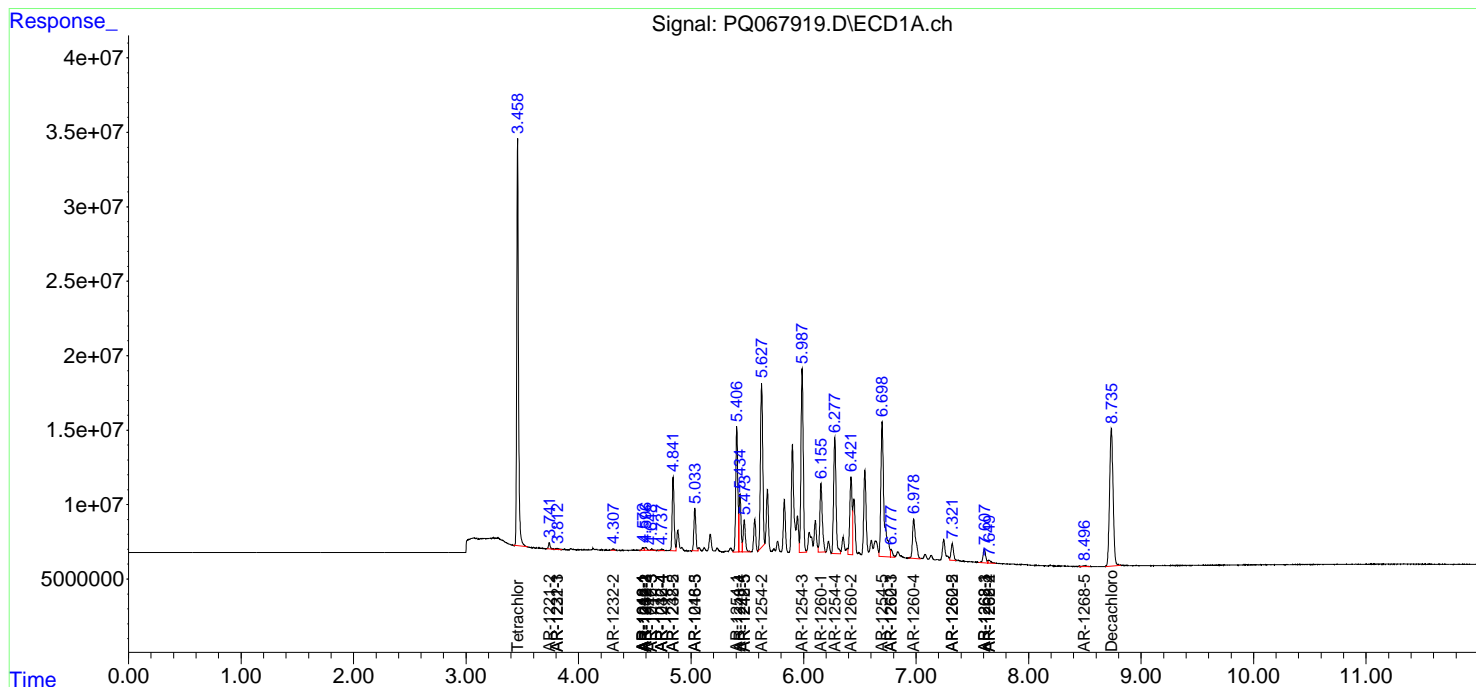
(f)=RT Delta > 1/2 Window (#)=Amounts differ by > 25% (m)=manual int.

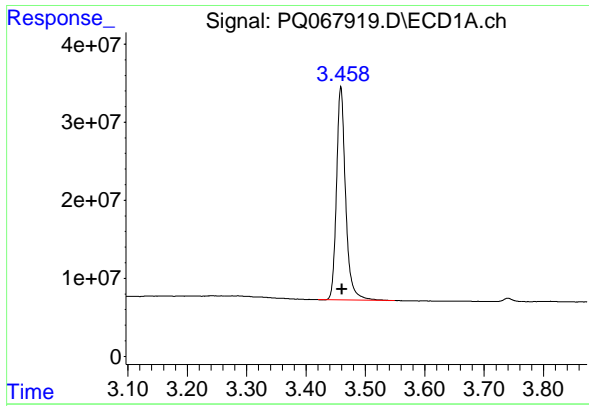
Data Path : Z:\pestpcbsrv\HPCHEM1\ECD_Q\Data\PQ081324\
 Data File : PQ067919.D
 Signal(s) : Signal #1: ECD1A.ch Signal #2: ECD2B.ch
 Acq On : 13 Aug 2024 02:19
 Operator : YP\AJ
 Sample : AR1254CCC500
 Misc :
 ALS Vial : 6 Sample Multiplier: 1

Instrument :
 ECD_Q
 ClientSampleId :
 AR1254CCC500

Integration File signal 1: autoint1.e
 Integration File signal 2: autoint2.e
 Quant Time: Aug 13 10:32:24 2024
 Quant Method : Z:\pestpcbsrv\HPCHEM1\ECD_Q\Method\PQ080524.M
 Quant Title : GC EXTRACTABLES
 QLast Update : Fri Aug 09 02:37:44 2024
 Response via : Initial Calibration
 Integrator: ChemStation

Volume Inj. : 2 µl
 Signal #1 Phase : ZB-MR1 Signal #2 Phase: ZB-MR2
 Signal #1 Info : 30Mx0.32mmx 0.50µm Signal #2 Info : 30M x 0.32mm x 0.25µm

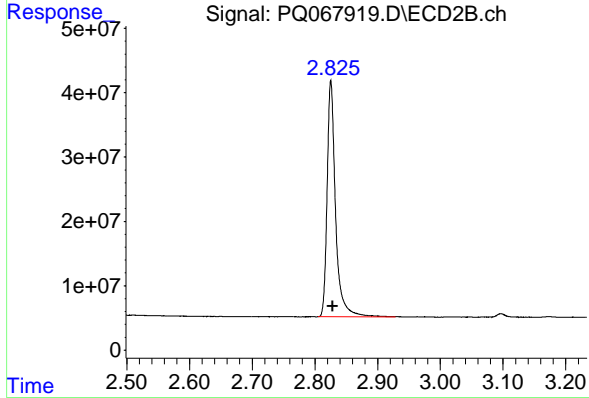




#1 Tetrachloro-m-xylene

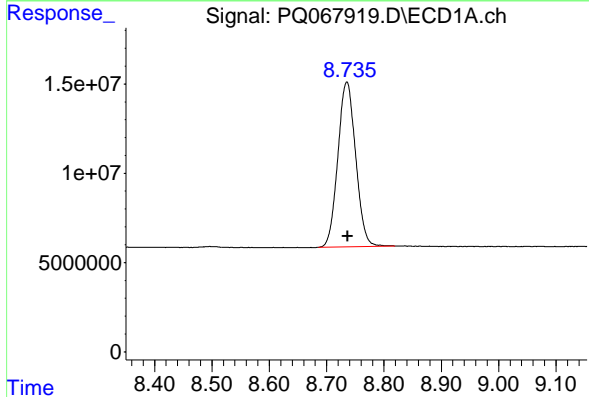
R.T.: 3.459 min
 Delta R.T.: -0.002 min
 Response: 290275619
 Conc: 48.92 ng/ml

Instrument :
 ECD_Q
 ClientSampleId :
 AR1254CCC500



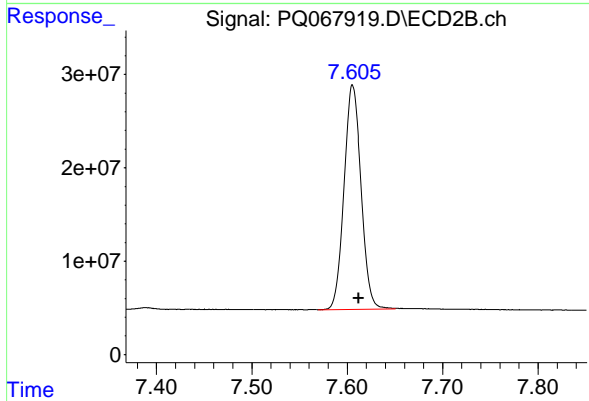
#1 Tetrachloro-m-xylene

R.T.: 2.826 min
 Delta R.T.: -0.003 min
 Response: 344439654
 Conc: 54.31 ng/ml



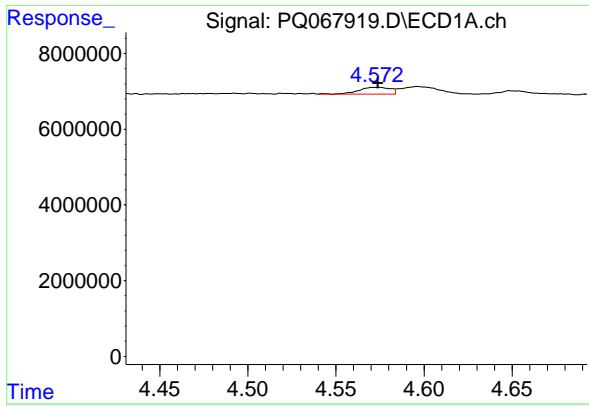
#2 Decachlorobiphenyl

R.T.: 8.735 min
 Delta R.T.: 0.000 min
 Response: 199824359
 Conc: 51.86 ng/ml



#2 Decachlorobiphenyl

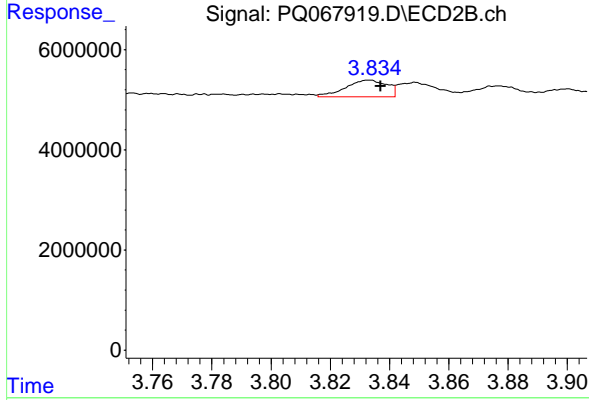
R.T.: 7.606 min
 Delta R.T.: -0.006 min
 Response: 298942058
 Conc: 53.04 ng/ml



#3 AR-1016-1

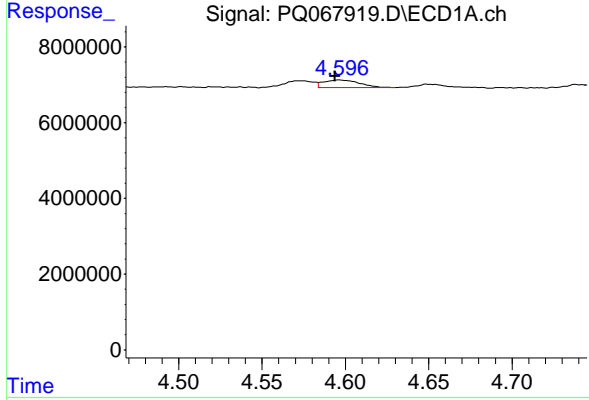
R.T.: 4.572 min
 Delta R.T.: -0.001 min
 Response: 2249768
 Conc: 13.61 ng/ml

Instrument :
 ECD_Q
 ClientSampleId :
 AR1254CCC500



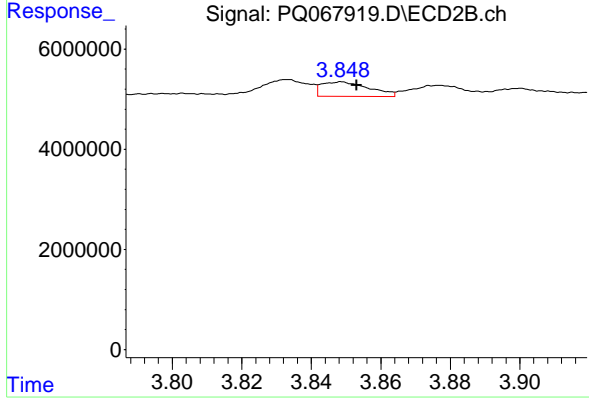
#3 AR-1016-1

R.T.: 3.833 min
 Delta R.T.: -0.004 min
 Response: 3238209
 Conc: 18.37 ng/ml



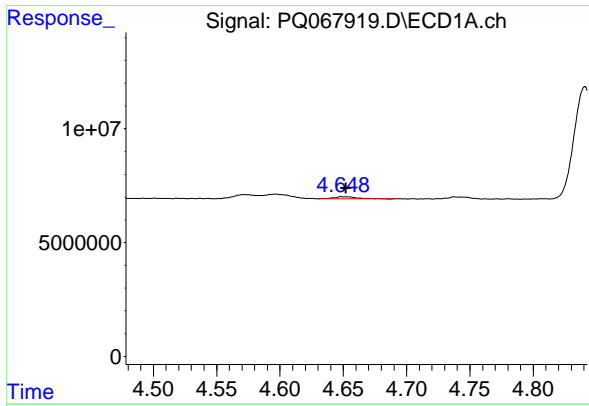
#4 AR-1016-2

R.T.: 4.596 min
 Delta R.T.: 0.003 min
 Response: 2990871
 Conc: 10.16 ng/ml



#4 AR-1016-2

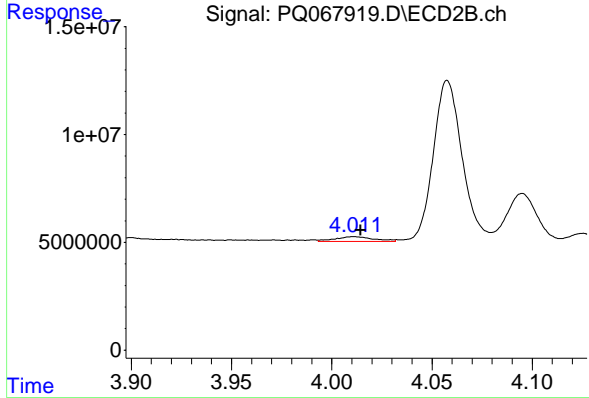
R.T.: 3.849 min
 Delta R.T.: -0.004 min
 Response: 2753254
 Conc: 9.44 ng/ml



#5 AR-1016-3

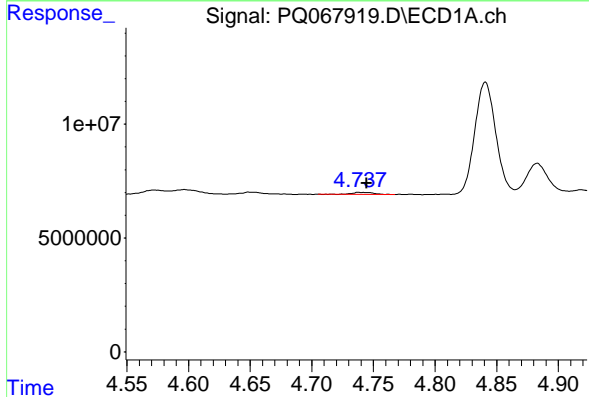
R.T.: 4.649 min
 Delta R.T.: -0.003 min
 Response: 975195
 Conc: 5.11 ng/ml

Instrument :
 ECD_Q
 Client Sample Id :
 AR1254CCC500



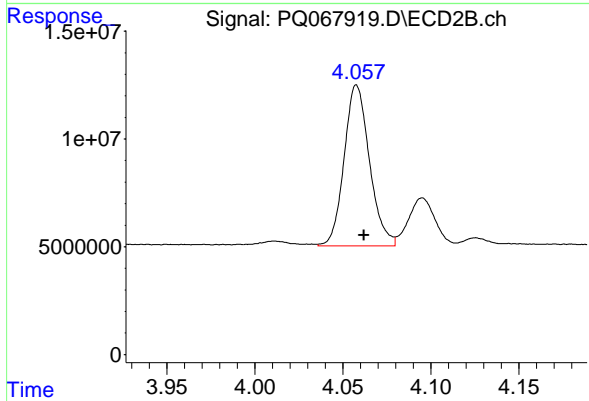
#5 AR-1016-3

R.T.: 4.011 min
 Delta R.T.: -0.003 min
 Response: 2830748
 Conc: 17.98 ng/ml



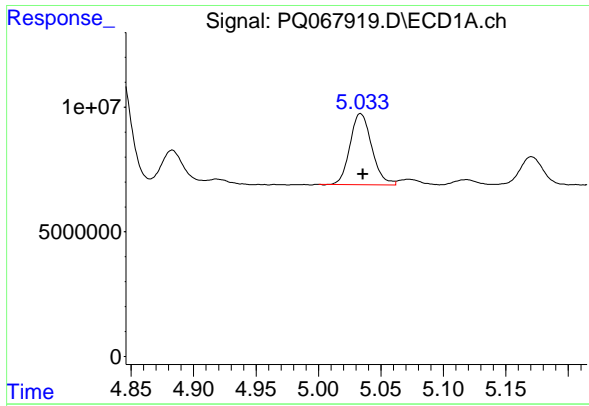
#6 AR-1016-4

R.T.: 4.738 min
 Delta R.T.: -0.007 min
 Response: 1211934
 Conc: 8.06 ng/ml



#6 AR-1016-4

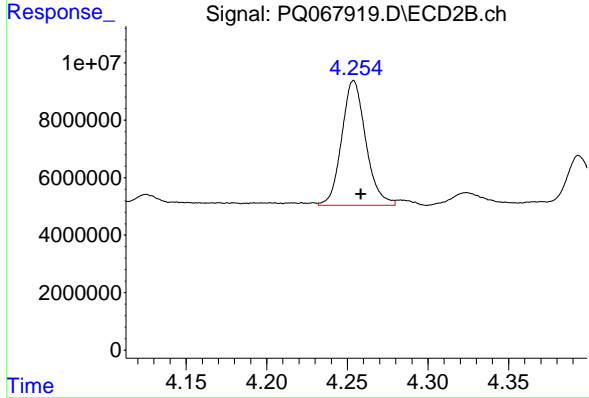
R.T.: 4.058 min
 Delta R.T.: -0.004 min
 Response: 74753113
 Conc: 503.05 ng/ml



#7 AR-1016-5

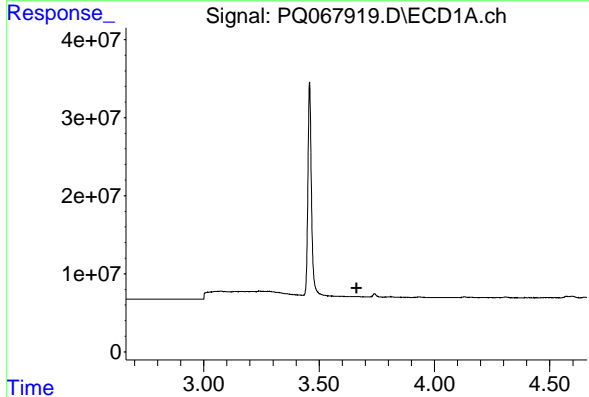
R.T.: 5.034 min
 Delta R.T.: -0.002 min
 Response: 34494658
 Conc: 236.00 ng/ml

Instrument : ECD_Q
 ClientSampleId : AR1254CCC500



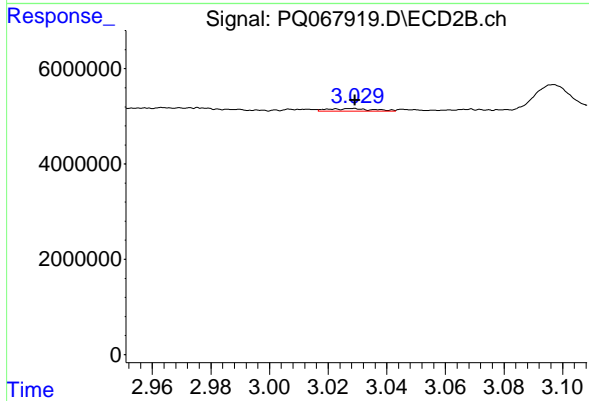
#7 AR-1016-5

R.T.: 4.254 min
 Delta R.T.: -0.004 min
 Response: 45219901
 Conc: 264.34 ng/ml



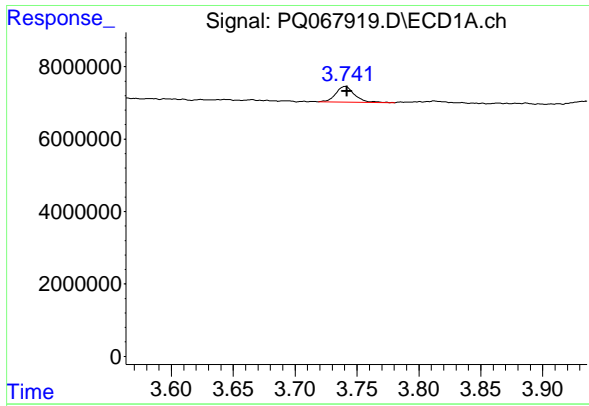
#8 AR-1221-1

R.T.: 0.000 min
 Exp R.T. : 3.662 min
 Response: 0
 Conc: N.D.



#8 AR-1221-1

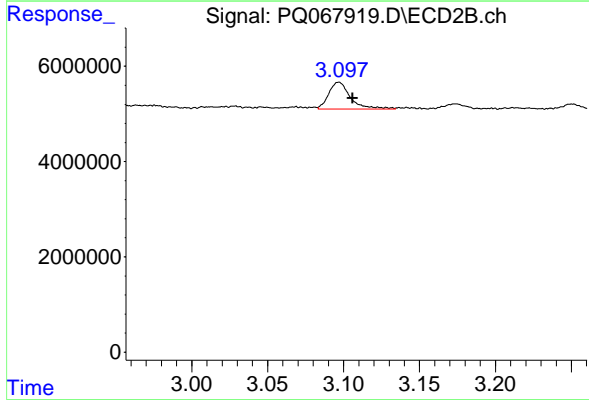
R.T.: 3.029 min
 Delta R.T.: 0.000 min
 Response: 573264
 Conc: 7.75 ng/ml



#9 AR-1221-2

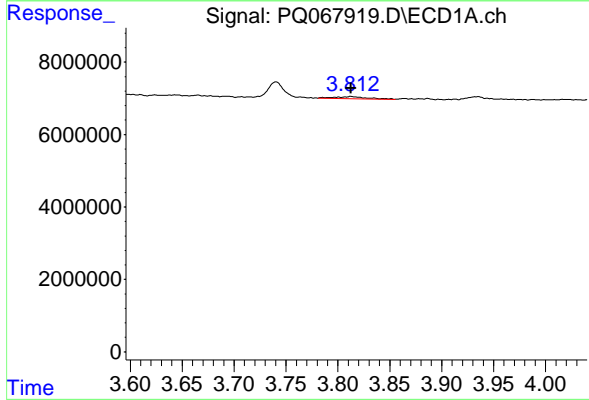
R.T.: 3.740 min
 Delta R.T.: -0.001 min
 Response: 4626847
 Conc: 80.90 ng/ml

Instrument : ECD_Q
 ClientSampleId : AR1254CCC500



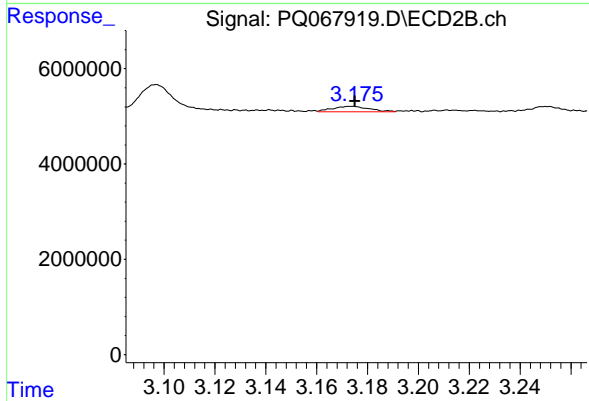
#9 AR-1221-2

R.T.: 3.097 min
 Delta R.T.: -0.009 min
 Response: 5633517
 Conc: 101.15 ng/ml



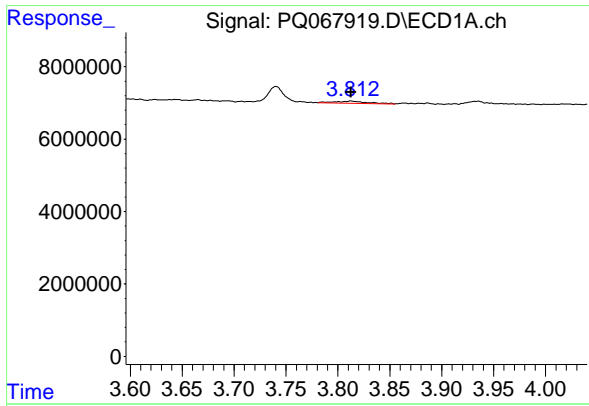
#10 AR-1221-3

R.T.: 3.813 min
 Delta R.T.: 0.000 min
 Response: 1248019
 Conc: 7.47 ng/ml



#10 AR-1221-3

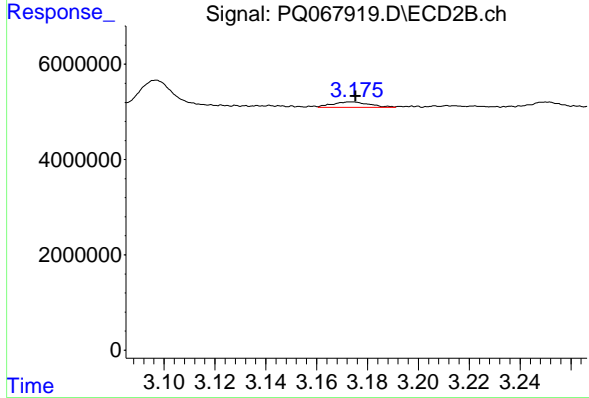
R.T.: 3.174 min
 Delta R.T.: -0.001 min
 Response: 1147867
 Conc: 6.35 ng/ml



#11 AR-1232-1

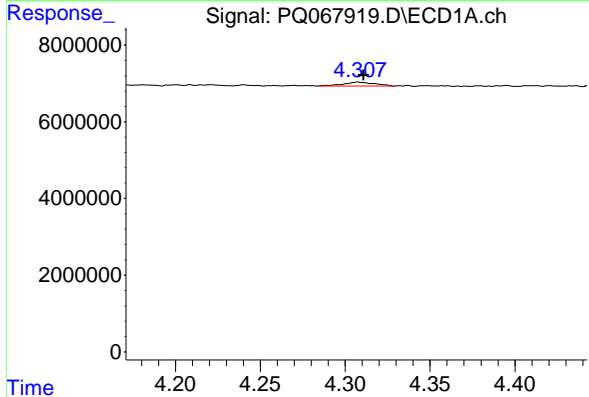
R.T.: 3.813 min
 Delta R.T.: 0.000 min
 Response: 1248019
 Conc: 9.16 ng/ml

Instrument :
 ECD_Q
 ClientSampleId :
 AR1254CCC500



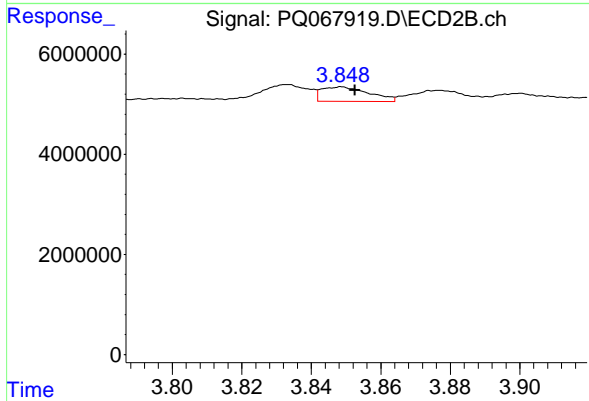
#11 AR-1232-1

R.T.: 3.174 min
 Delta R.T.: -0.001 min
 Response: 1147867
 Conc: 7.81 ng/ml



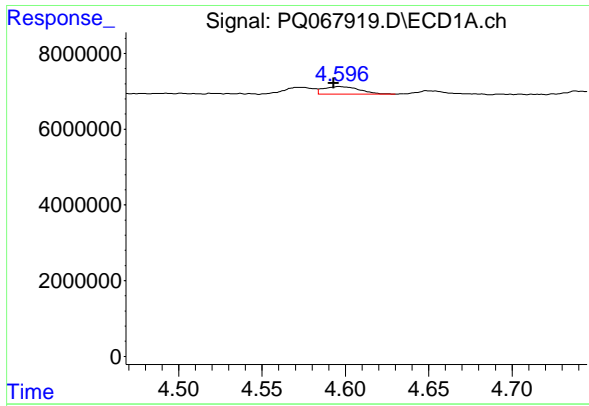
#12 AR-1232-2

R.T.: 4.308 min
 Delta R.T.: -0.003 min
 Response: 1330140
 Conc: 18.41 ng/ml



#12 AR-1232-2

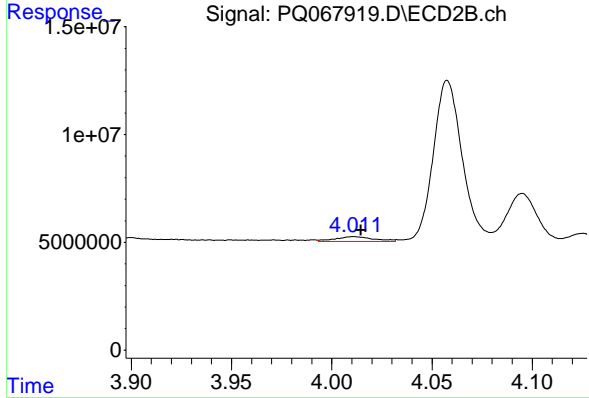
R.T.: 3.849 min
 Delta R.T.: -0.004 min
 Response: 2753254
 Conc: 20.30 ng/ml



#13 AR-1232-3

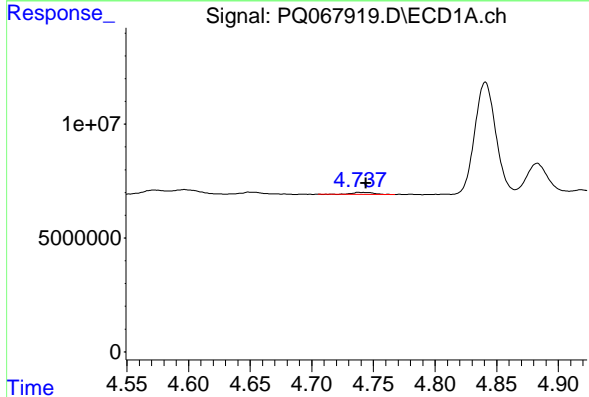
R.T.: 4.596 min
 Delta R.T.: 0.003 min
 Response: 2990871
 Conc: 21.20 ng/ml

Instrument : ECD_Q
 ClientSampleId : AR1254CCC500



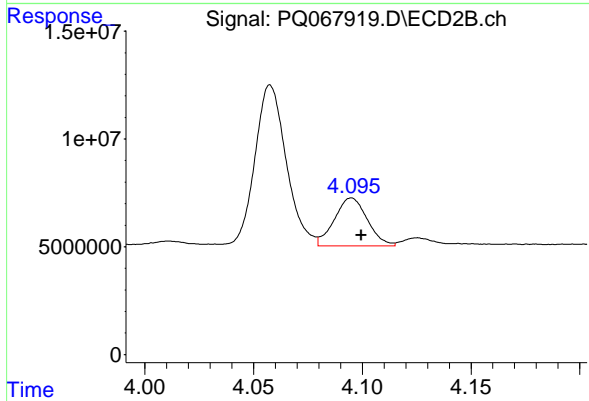
#13 AR-1232-3

R.T.: 4.011 min
 Delta R.T.: -0.003 min
 Response: 2830748
 Conc: 37.38 ng/ml



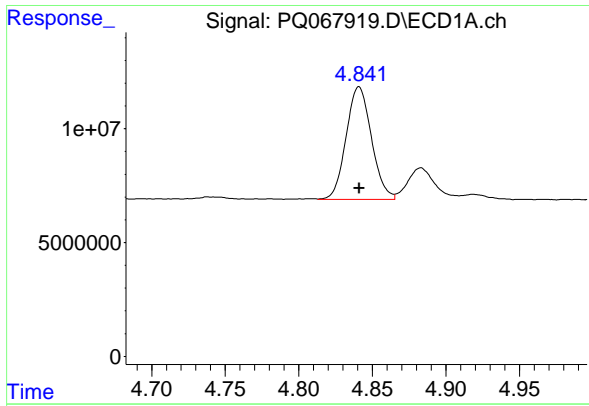
#14 AR-1232-4

R.T.: 4.738 min
 Delta R.T.: -0.006 min
 Response: 1211934
 Conc: 17.28 ng/ml



#14 AR-1232-4

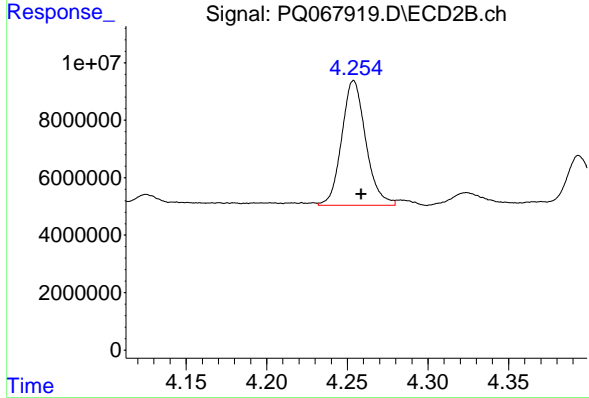
R.T.: 4.095 min
 Delta R.T.: -0.004 min
 Response: 23446249
 Conc: 339.70 ng/ml



#15 AR-1232-5

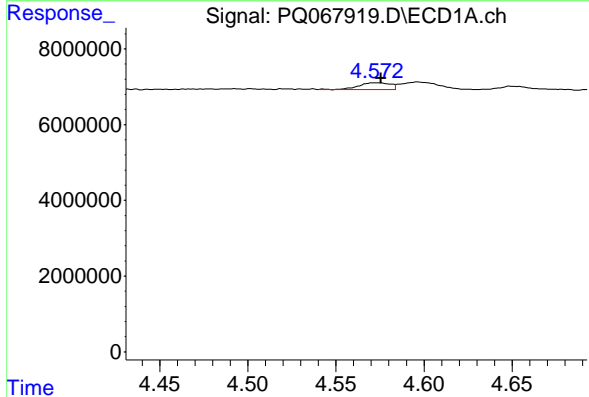
R.T.: 4.841 min
 Delta R.T.: 0.000 min
 Response: 59270796
 Conc: 1215.38 ng/ml

Instrument :
 ECD_Q
 ClientSampleId :
 AR1254CCC500



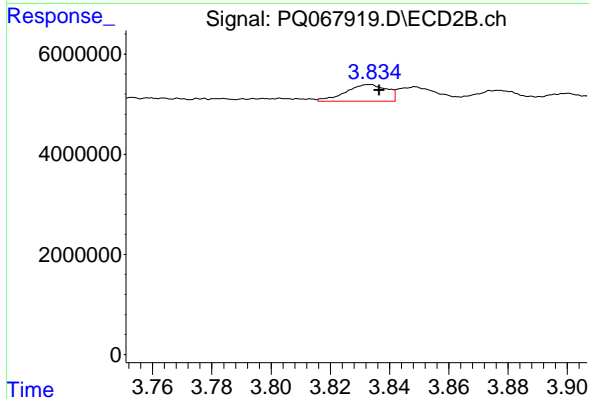
#15 AR-1232-5

R.T.: 4.254 min
 Delta R.T.: -0.005 min
 Response: 45219901
 Conc: 594.74 ng/ml



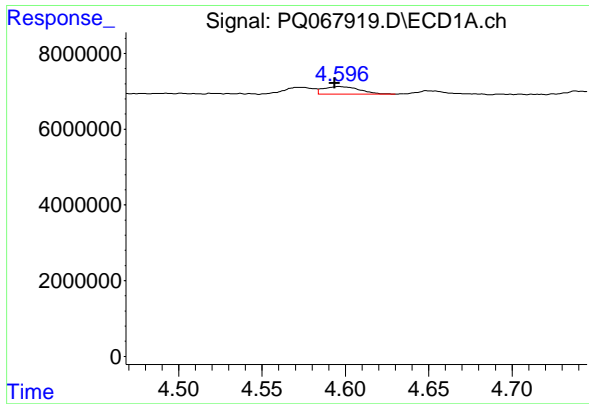
#16 AR-1242-1

R.T.: 4.572 min
 Delta R.T.: -0.003 min
 Response: 2249768
 Conc: 16.72 ng/ml



#16 AR-1242-1

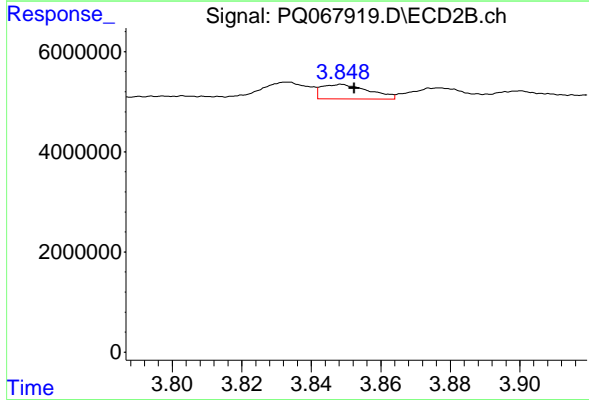
R.T.: 3.833 min
 Delta R.T.: -0.003 min
 Response: 3238209
 Conc: 22.59 ng/ml



#17 AR-1242-2

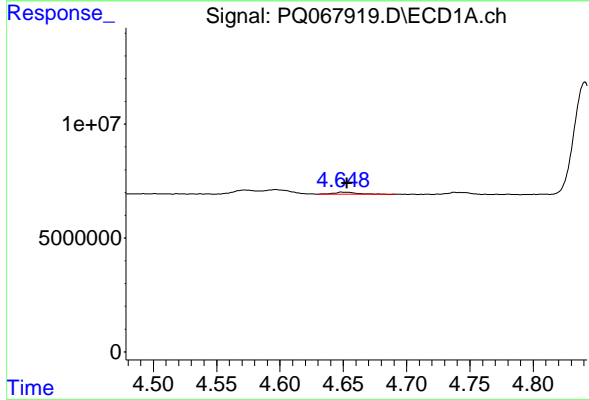
R.T.: 4.596 min
 Delta R.T.: 0.003 min
 Response: 2990871
 Conc: 12.77 ng/ml

Instrument : ECD_Q
 ClientSampleId : AR1254CCC500



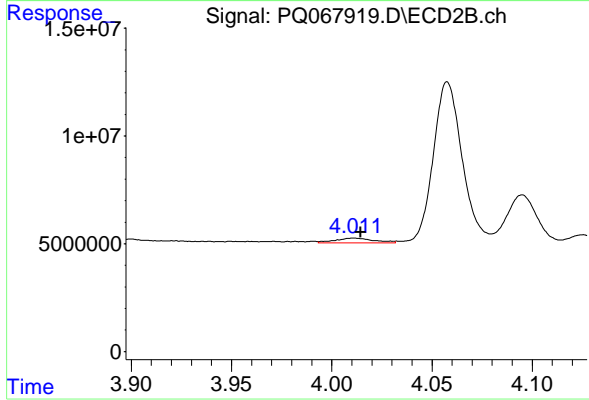
#17 AR-1242-2

R.T.: 3.849 min
 Delta R.T.: -0.003 min
 Response: 2753254
 Conc: 11.75 ng/ml



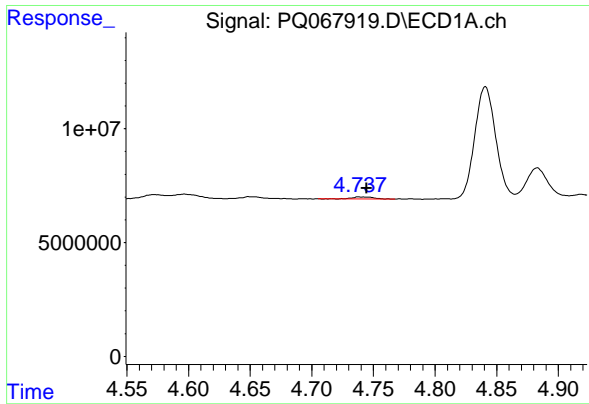
#18 AR-1242-3

R.T.: 4.649 min
 Delta R.T.: -0.003 min
 Response: 975195
 Conc: 6.50 ng/ml



#18 AR-1242-3

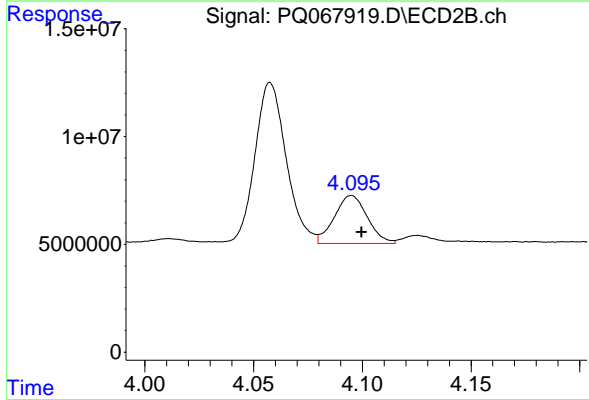
R.T.: 4.011 min
 Delta R.T.: -0.003 min
 Response: 2830748
 Conc: 21.93 ng/ml



#19 AR-1242-4

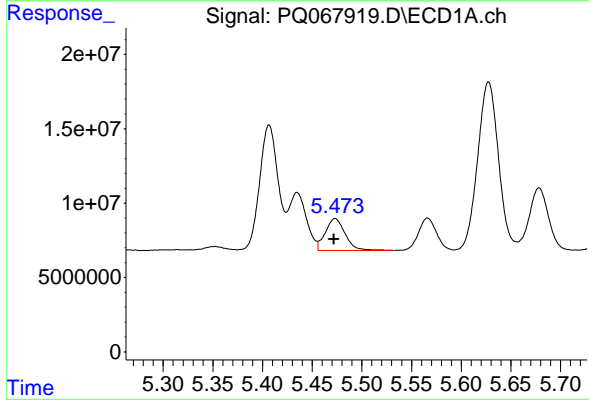
R.T.: 4.738 min
 Delta R.T.: -0.006 min
 Response: 1211934
 Conc: 10.39 ng/ml

Instrument :
 ECD_Q
 ClientSampleId :
 AR1254CCC500



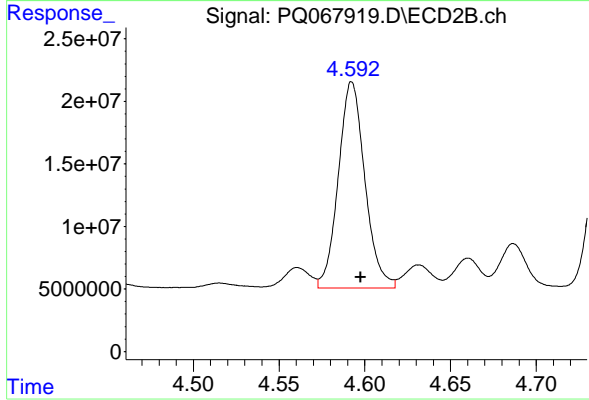
#19 AR-1242-4

R.T.: 4.095 min
 Delta R.T.: -0.005 min
 Response: 23446249
 Conc: 179.55 ng/ml



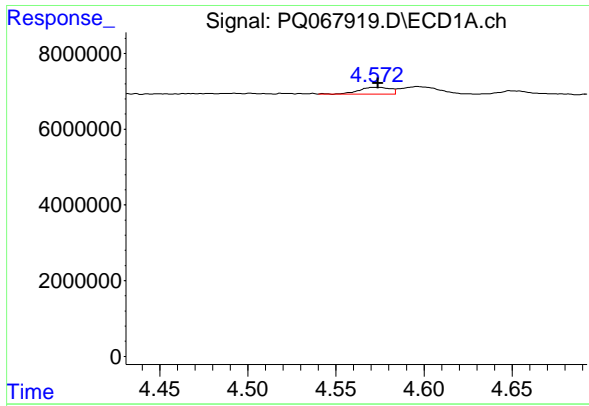
#20 AR-1242-5

R.T.: 5.473 min
 Delta R.T.: 0.001 min
 Response: 29858224
 Conc: 263.05 ng/ml



#20 AR-1242-5

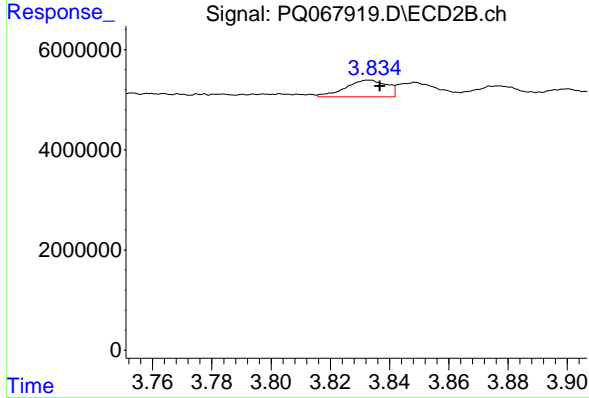
R.T.: 4.592 min
 Delta R.T.: -0.005 min
 Response: 177606393
 Conc: 1162.14 ng/ml



#21 AR-1248-1

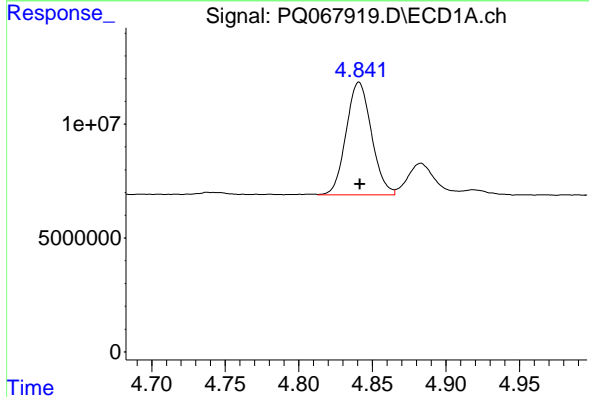
R.T.: 4.572 min
 Delta R.T.: -0.001 min
 Response: 2249768
 Conc: 21.55 ng/ml

Instrument :
 ECD_Q
 ClientSampleId :
 AR1254CCC500



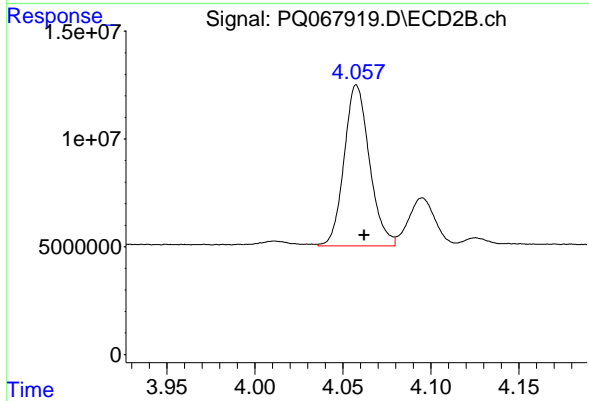
#21 AR-1248-1

R.T.: 3.833 min
 Delta R.T.: -0.003 min
 Response: 3238209
 Conc: 28.48 ng/ml



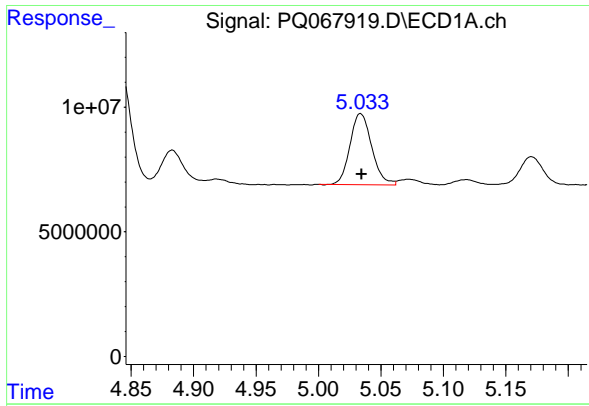
#22 AR-1248-2

R.T.: 4.841 min
 Delta R.T.: 0.000 min
 Response: 59270796
 Conc: 351.06 ng/ml



#22 AR-1248-2

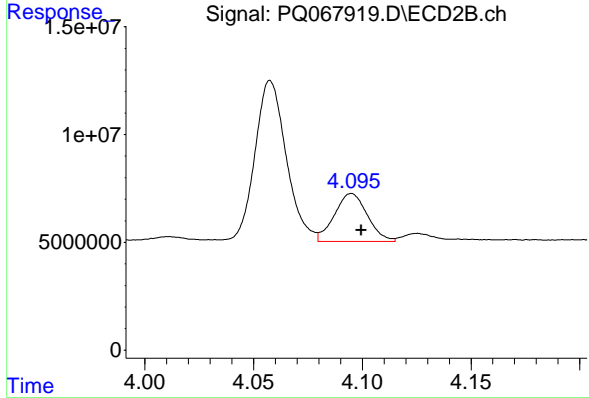
R.T.: 4.058 min
 Delta R.T.: -0.004 min
 Response: 74753113
 Conc: 357.11 ng/ml



#23 AR-1248-3

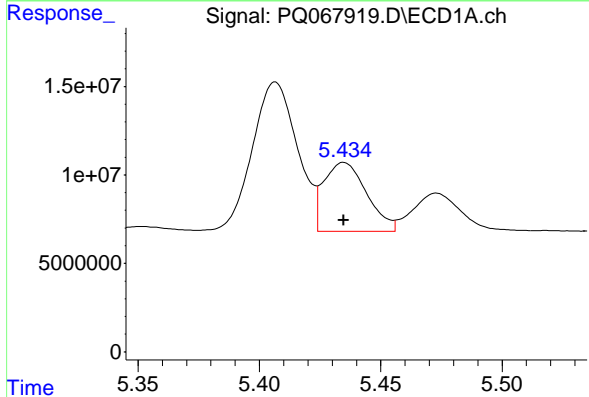
R.T.: 5.034 min
 Delta R.T.: 0.000 min
 Response: 34494658
 Conc: 170.03 ng/ml

Instrument :
 ECD_Q
 ClientSampleId :
 AR1254CCC500



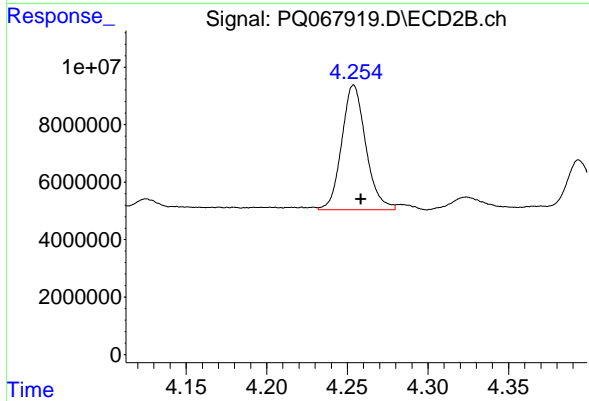
#23 AR-1248-3

R.T.: 4.095 min
 Delta R.T.: -0.004 min
 Response: 23446249
 Conc: 118.46 ng/ml



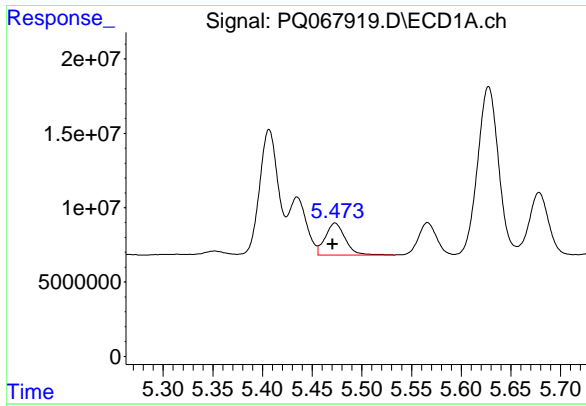
#24 AR-1248-4

R.T.: 5.435 min
 Delta R.T.: 0.000 min
 Response: 47829683
 Conc: 251.60 ng/ml



#24 AR-1248-4

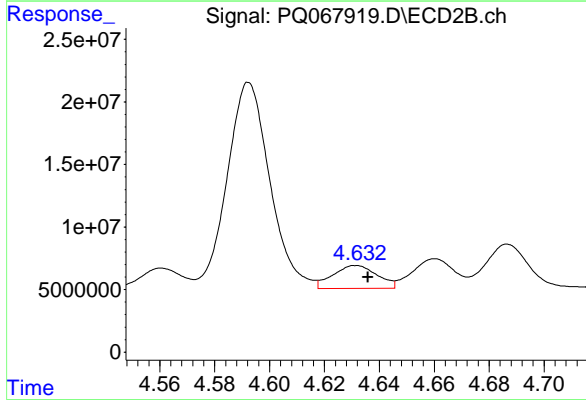
R.T.: 4.254 min
 Delta R.T.: -0.004 min
 Response: 45219901
 Conc: 191.73 ng/ml



#25 AR-1248-5

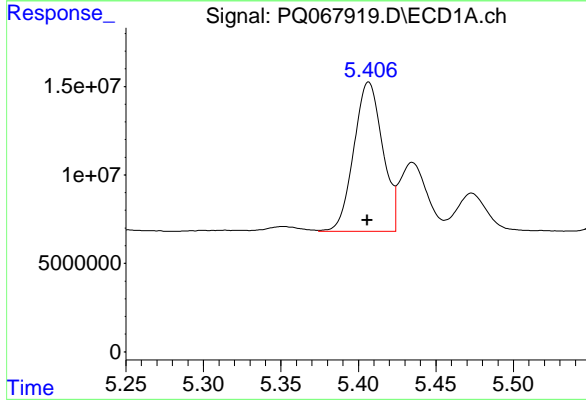
R.T.: 5.473 min
 Delta R.T.: 0.002 min
 Response: 29858224
 Conc: 148.94 ng/ml

Instrument :
 ECD_Q
 ClientSampleId :
 AR1254CCC500



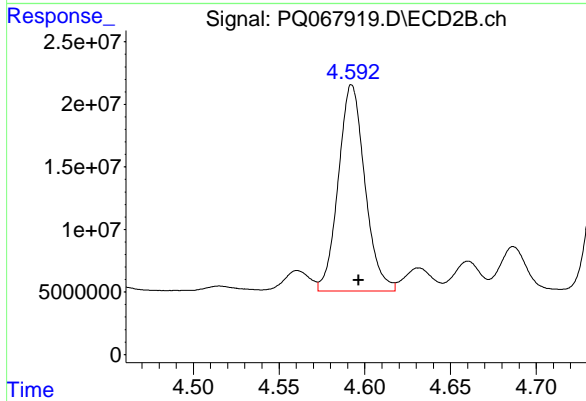
#25 AR-1248-5

R.T.: 4.632 min
 Delta R.T.: -0.004 min
 Response: 20525386
 Conc: 106.47 ng/ml



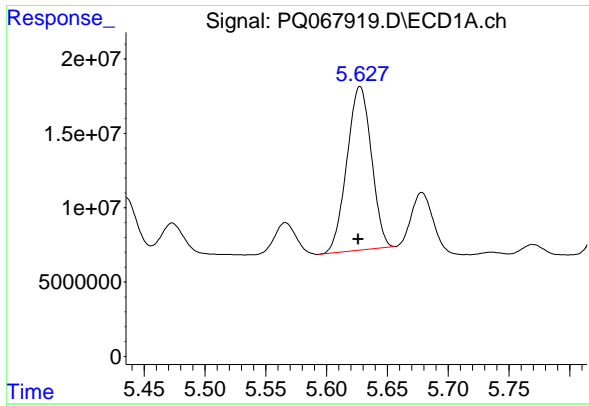
#26 AR-1254-1

R.T.: 5.407 min
 Delta R.T.: 0.000 min
 Response: 109156207
 Conc: 490.71 ng/ml



#26 AR-1254-1

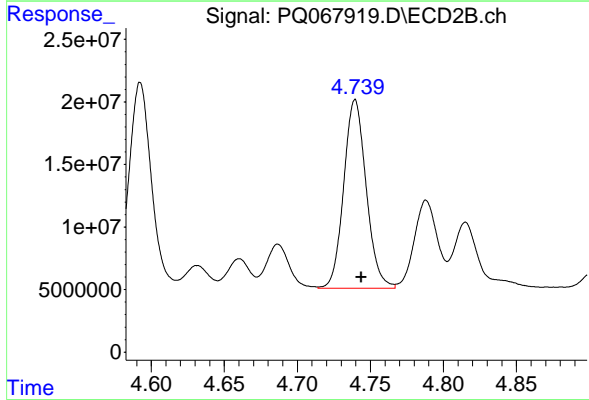
R.T.: 4.592 min
 Delta R.T.: -0.004 min
 Response: 177606393
 Conc: 528.75 ng/ml



#27 AR-1254-2

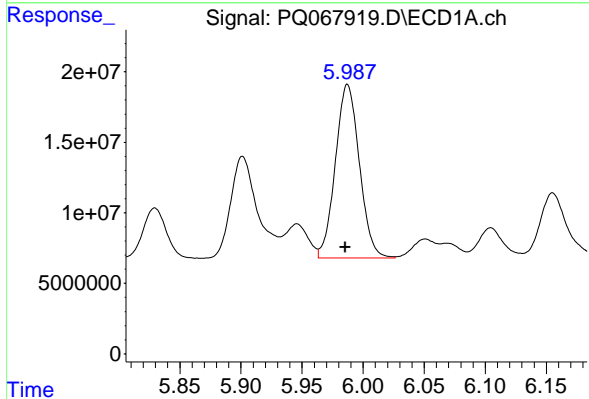
R.T.: 5.628 min
 Delta R.T.: 0.001 min
 Response: 154327990
 Conc: 477.97 ng/ml

Instrument :
 ECD_Q
 ClientSampleId :
 AR1254CCC500



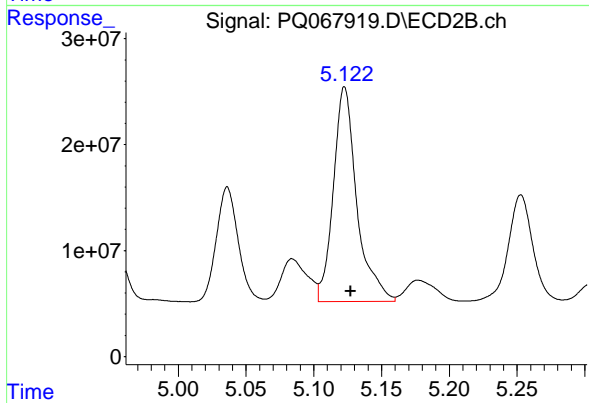
#27 AR-1254-2

R.T.: 4.740 min
 Delta R.T.: -0.004 min
 Response: 161387824
 Conc: 524.42 ng/ml



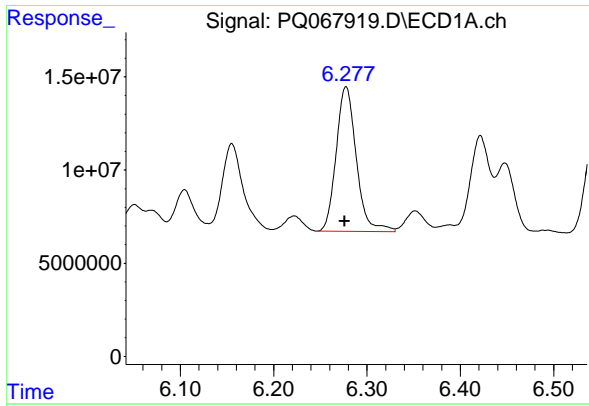
#28 AR-1254-3

R.T.: 5.987 min
 Delta R.T.: 0.002 min
 Response: 168745211
 Conc: 514.98 ng/ml



#28 AR-1254-3

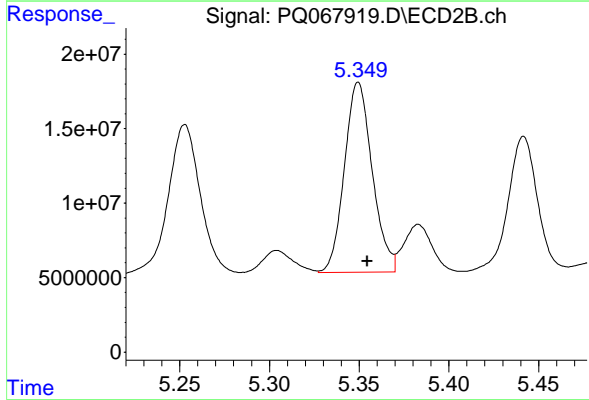
R.T.: 5.123 min
 Delta R.T.: -0.005 min
 Response: 244287793
 Conc: 547.66 ng/ml



#29 AR-1254-4

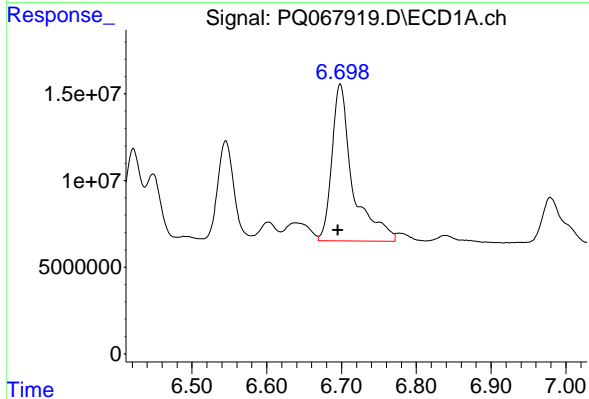
R.T.: 6.278 min
 Delta R.T.: 0.002 min
 Response: 116592760
 Conc: 581.69 ng/ml

Instrument :
 ECD_Q
 ClientSampleId :
 AR1254CCC500



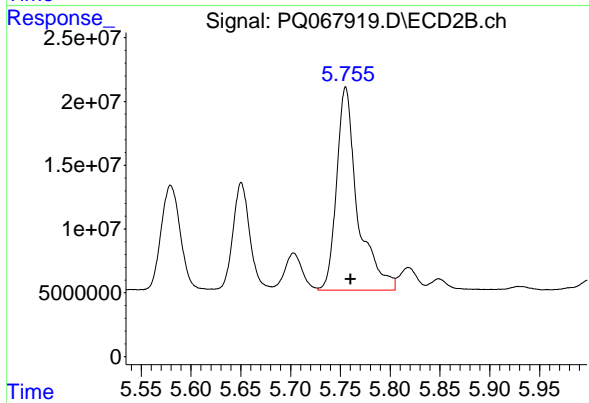
#29 AR-1254-4

R.T.: 5.350 min
 Delta R.T.: -0.005 min
 Response: 137795515
 Conc: 610.90 ng/ml



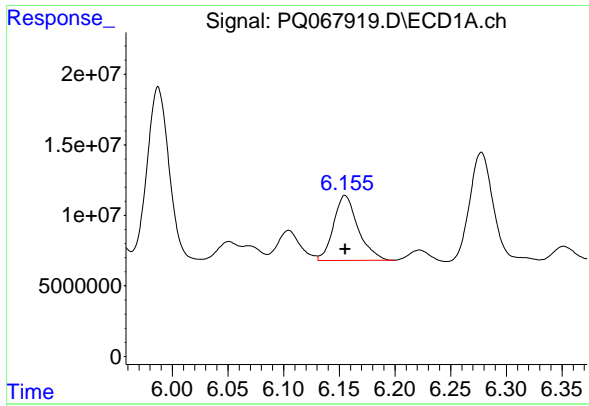
#30 AR-1254-5

R.T.: 6.698 min
 Delta R.T.: 0.003 min
 Response: 175462503
 Conc: 697.99 ng/ml



#30 AR-1254-5

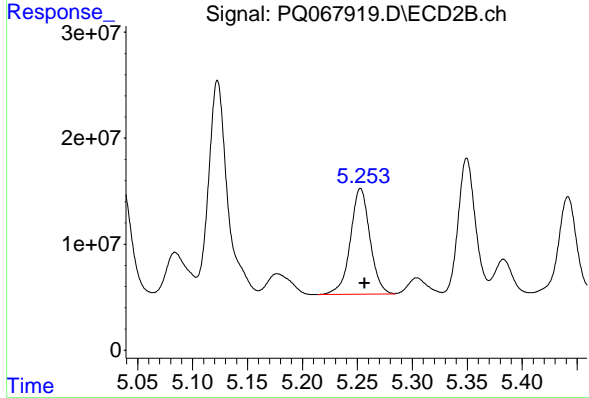
R.T.: 5.755 min
 Delta R.T.: -0.005 min
 Response: 233586844
 Conc: 567.92 ng/ml



#31 AR-1260-1

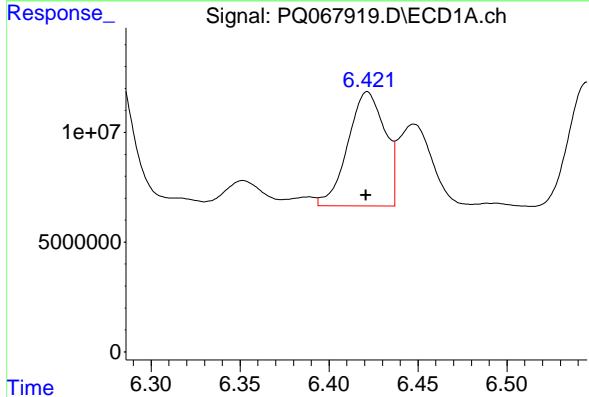
R.T.: 6.155 min
 Delta R.T.: 0.000 min
 Response: 70425270
 Conc: 257.04 ng/ml

Instrument :
 ECD_Q
 ClientSampleId :
 AR1254CCC500



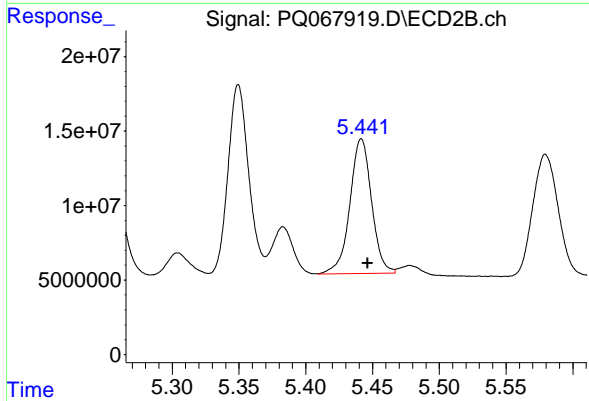
#31 AR-1260-1

R.T.: 5.253 min
 Delta R.T.: -0.004 min
 Response: 124161195
 Conc: 365.33 ng/ml



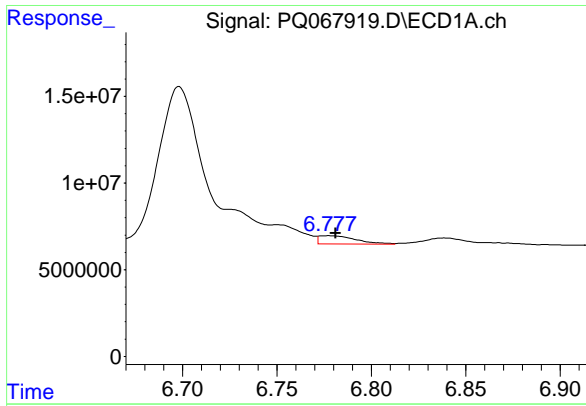
#32 AR-1260-2

R.T.: 6.422 min
 Delta R.T.: 0.000 min
 Response: 75614932
 Conc: 234.55 ng/ml



#32 AR-1260-2

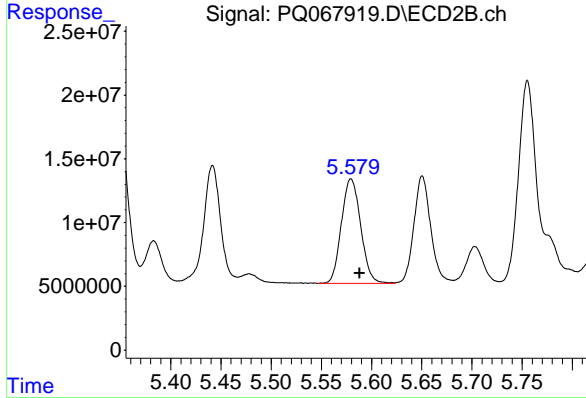
R.T.: 5.442 min
 Delta R.T.: -0.005 min
 Response: 102358752
 Conc: 261.47 ng/ml



#33 AR-1260-3

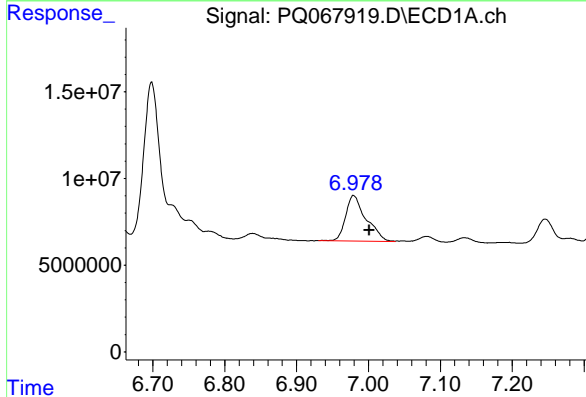
R.T.: 6.778 min
 Delta R.T.: -0.003 min
 Response: 6571867
 Conc: 28.69 ng/ml

Instrument :
 ECD_Q
 ClientSampleId :
 AR1254CCC500



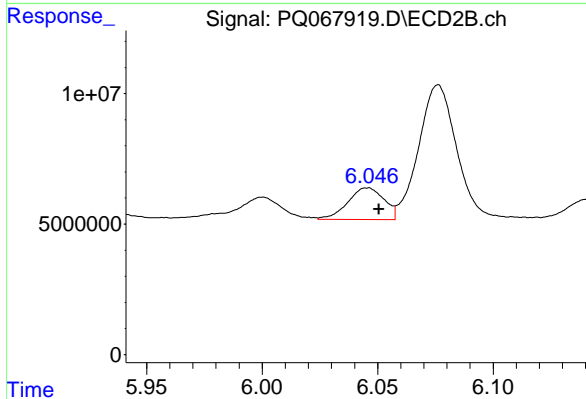
#33 AR-1260-3

R.T.: 5.580 min
 Delta R.T.: -0.009 min
 Response: 109866005
 Conc: 292.37 ng/ml



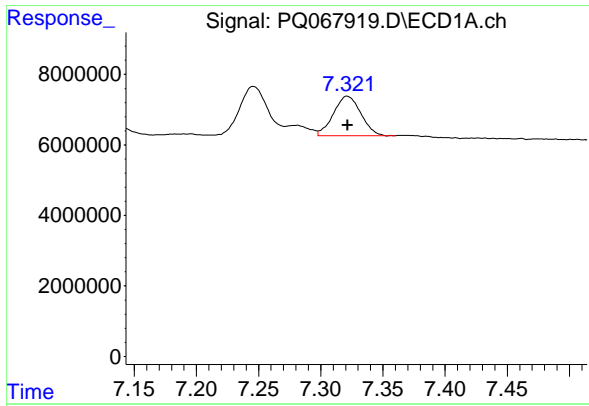
#34 AR-1260-4

R.T.: 6.979 min
 Delta R.T.: -0.022 min
 Response: 51994164
 Conc: 203.84 ng/ml



#34 AR-1260-4

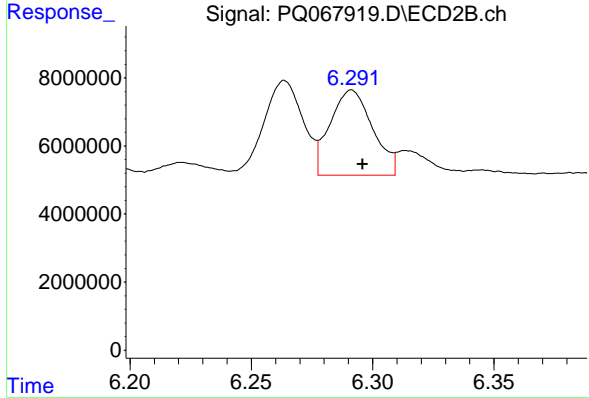
R.T.: 6.046 min
 Delta R.T.: -0.005 min
 Response: 13294993
 Conc: 45.96 ng/ml



#35 AR-1260-5

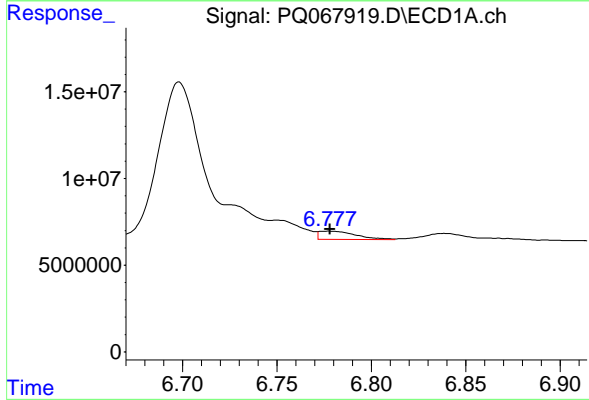
R.T.: 7.321 min
 Delta R.T.: 0.000 min
 Response: 17196910
 Conc: 38.85 ng/ml

Instrument :
 ECD_Q
 ClientSampleId :
 AR1254CCC500



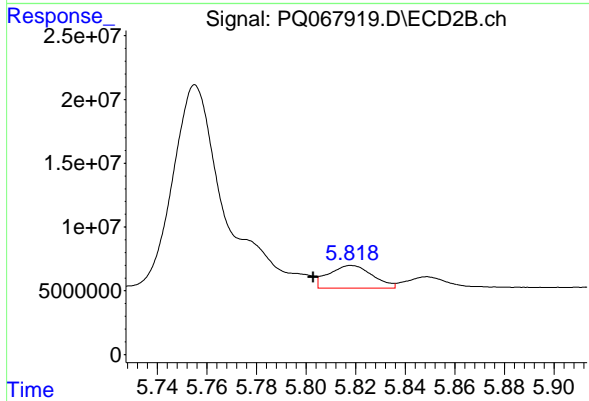
#35 AR-1260-5

R.T.: 6.291 min
 Delta R.T.: -0.004 min
 Response: 30550789
 Conc: 51.28 ng/ml



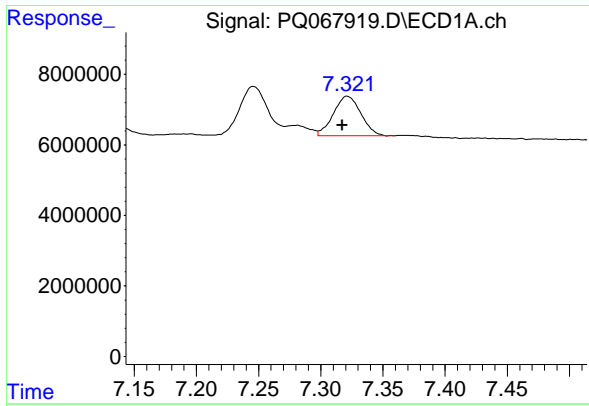
#36 AR-1262-1

R.T.: 6.778 min
 Delta R.T.: 0.000 min
 Response: 6571867
 Conc: 19.28 ng/ml



#36 AR-1262-1

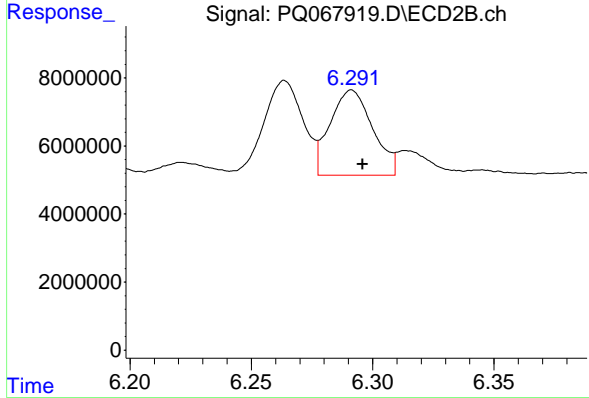
R.T.: 5.818 min
 Delta R.T.: 0.016 min
 Response: 21980155
 Conc: 49.22 ng/ml



#37 AR-1262-2

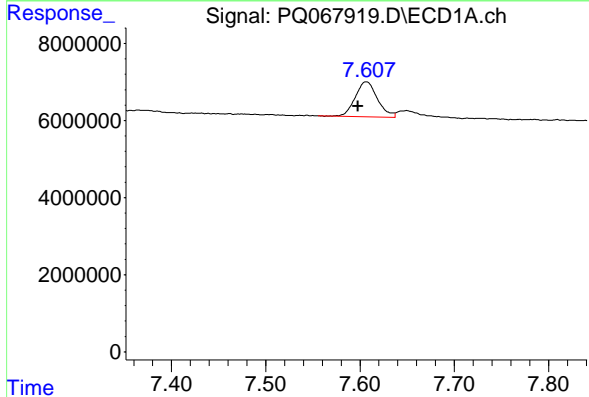
R.T.: 7.321 min
 Delta R.T.: 0.004 min
 Response: 17196910
 Conc: 31.78 ng/ml

Instrument : ECD_Q
 ClientSampleId : AR1254CCC500



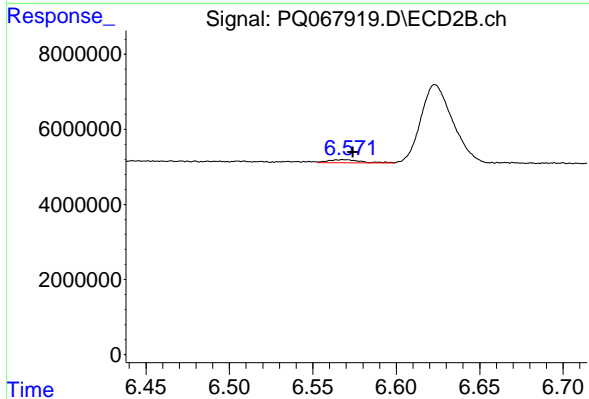
#37 AR-1262-2

R.T.: 6.291 min
 Delta R.T.: -0.004 min
 Response: 30550789
 Conc: 44.67 ng/ml



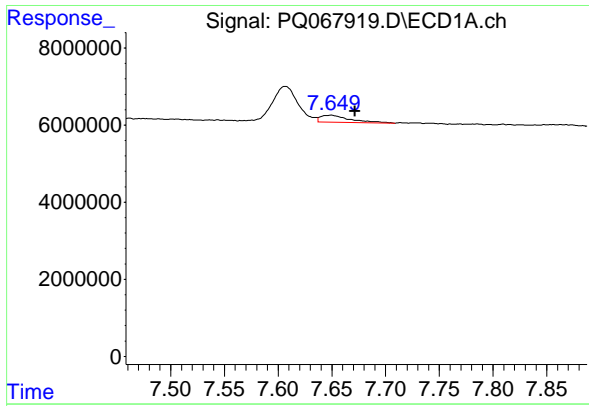
#38 AR-1262-3

R.T.: 7.607 min
 Delta R.T.: 0.009 min
 Response: 14850883
 Conc: 45.30 ng/ml



#38 AR-1262-3

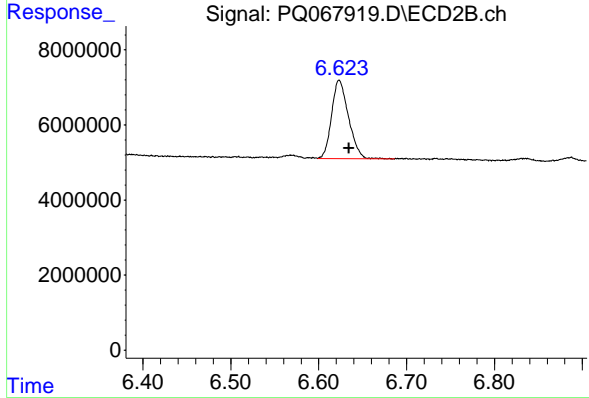
R.T.: 6.569 min
 Delta R.T.: -0.005 min
 Response: 1169130
 Conc: 3.87 ng/ml



#39 AR-1262-4

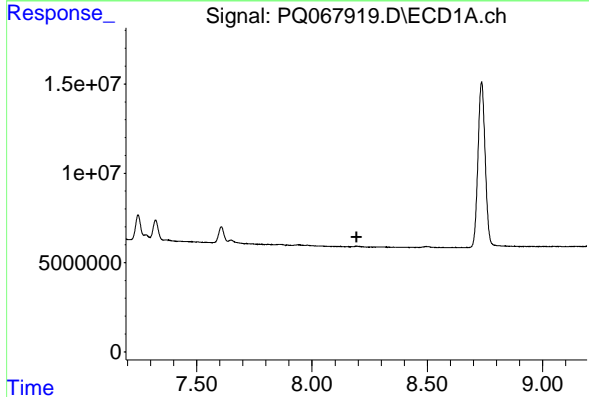
R.T.: 7.649 min
 Delta R.T.: -0.022 min
 Response: 3363433
 Conc: 12.58 ng/ml

Instrument : ECD_Q
 ClientSampleId : AR1254CCC500



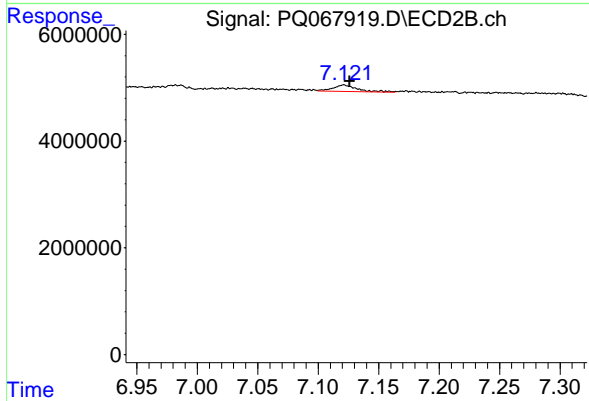
#39 AR-1262-4

R.T.: 6.623 min
 Delta R.T.: -0.011 min
 Response: 27947524
 Conc: 53.10 ng/ml



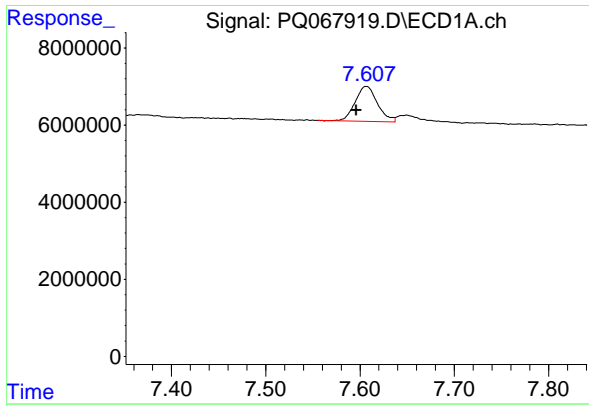
#40 AR-1262-5

R.T.: 0.000 min
 Exp R.T. : 8.193 min
 Response: 0
 Conc: N.D.



#40 AR-1262-5

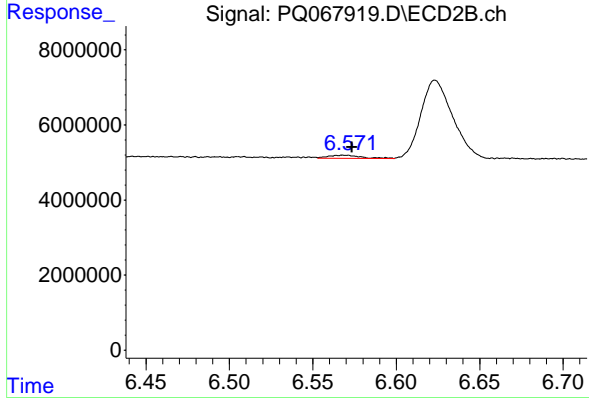
R.T.: 7.121 min
 Delta R.T.: -0.005 min
 Response: 1749898
 Conc: 8.17 ng/ml



#41 AR-1268-1

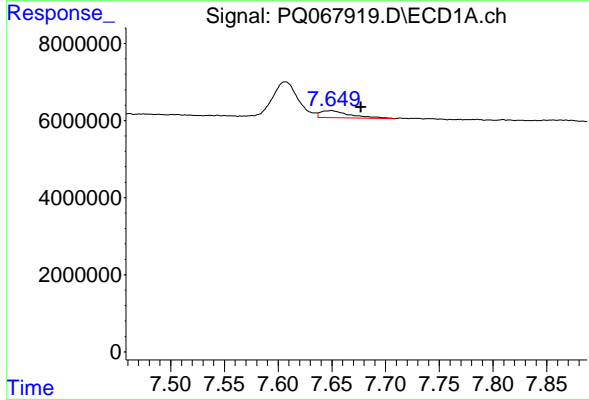
R.T.: 7.607 min
 Delta R.T.: 0.011 min
 Response: 14850883
 Conc: 25.36 ng/ml

Instrument :
 ECD_Q
 ClientSampleId :
 AR1254CCC500



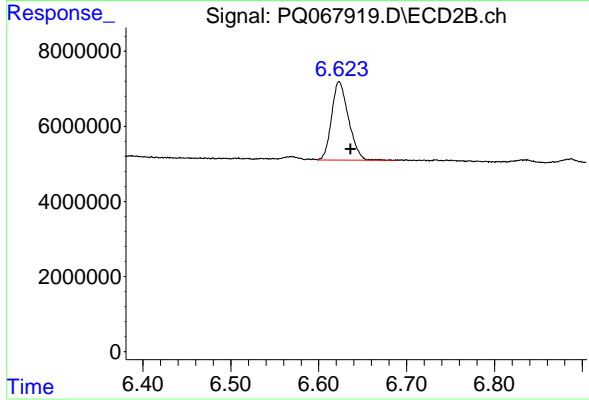
#41 AR-1268-1

R.T.: 6.569 min
 Delta R.T.: -0.004 min
 Response: 1169130
 Conc: 1.39 ng/ml



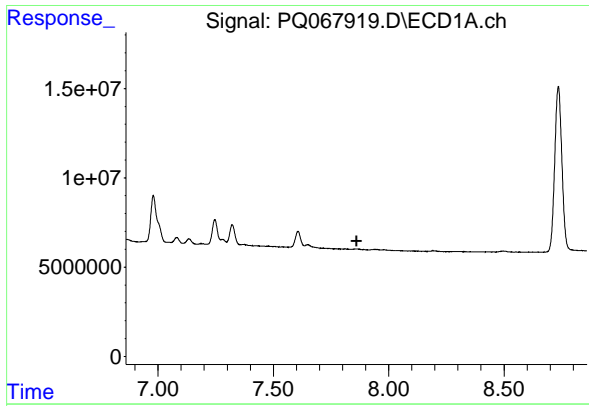
#42 AR-1268-2

R.T.: 7.649 min
 Delta R.T.: -0.028 min
 Response: 3363433
 Conc: 6.44 ng/ml



#42 AR-1268-2

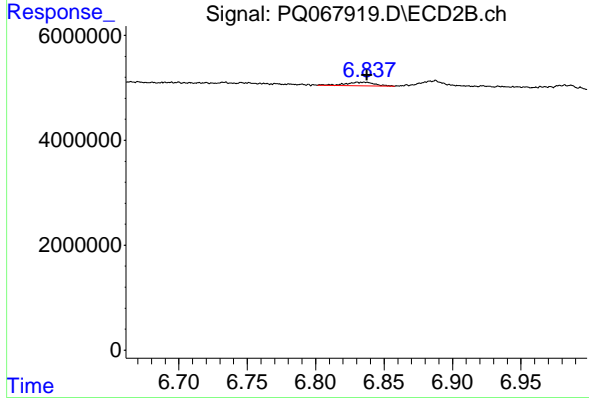
R.T.: 6.623 min
 Delta R.T.: -0.013 min
 Response: 27947524
 Conc: 36.49 ng/ml



#43 AR-1268-3

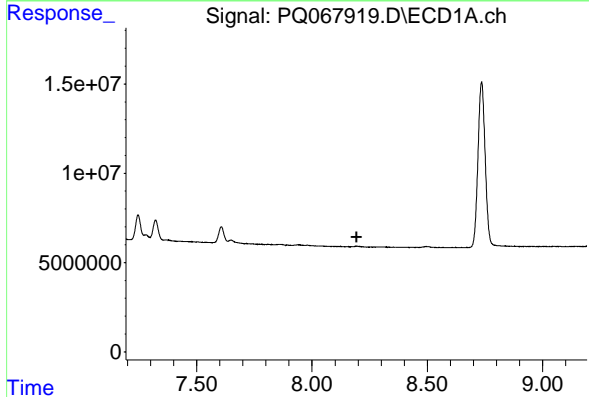
R.T.: 0.000 min
 Exp R.T.: 7.861 min
 Response: 0
 Conc: N.D.

Instrument :
 ECD_Q
 ClientSampleId :
 AR1254CCC500



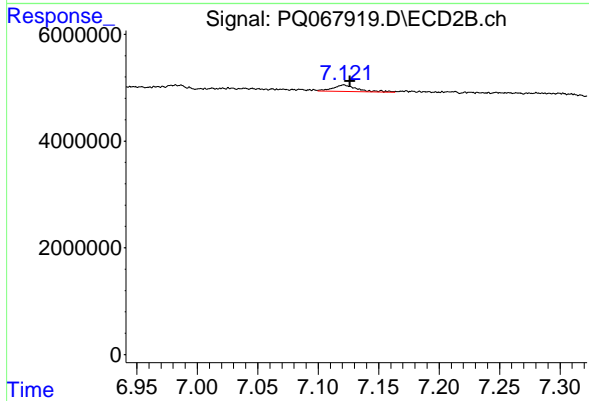
#43 AR-1268-3

R.T.: 6.831 min
 Delta R.T.: -0.007 min
 Response: 1028311
 Conc: 1.47 ng/ml



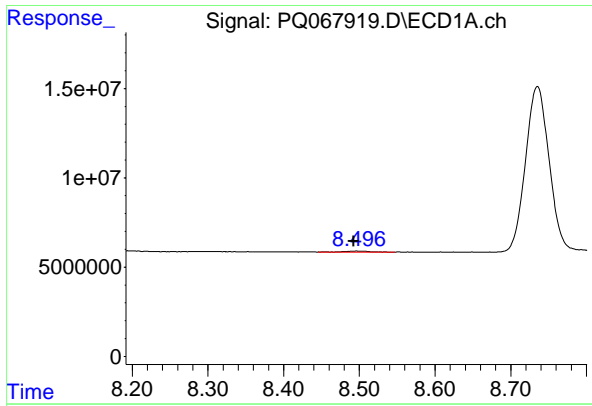
#44 AR-1268-4

R.T.: 0.000 min
 Exp R.T.: 8.193 min
 Response: 0
 Conc: N.D.



#44 AR-1268-4

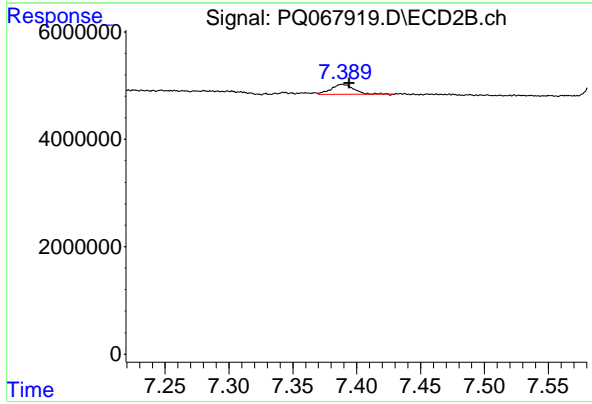
R.T.: 7.121 min
 Delta R.T.: -0.005 min
 Response: 1749898
 Conc: 7.44 ng/ml



#45 AR-1268-5

R.T.: 8.496 min
 Delta R.T.: 0.004 min
 Response: 1278975
 Conc: 1.03 ng/ml

Instrument :
 ECD_Q
 ClientSampleId :
 AR1254CCC500



#45 AR-1268-5

R.T.: 7.389 min
 Delta R.T.: -0.005 min
 Response: 2239114
 Conc: 1.17 ng/ml