

Data Path : Z:\pestpcbsrv\HPCHEM1\ECD_Q\Data\PQ081418\
 Data File : PQ031119.D
 Signal(s) : Signal #1: ECD1A.ch Signal #2: ECD2B.ch
 Acq On : 14 Aug 2018 19:32
 Operator : SM\SJ
 Sample : J4435-01
 Misc :
 ALS Vial : 21 Sample Multiplier: 1

Instrument :
 ECD_Q
 ClientSampled :

Integration File signal 1: autoint1.e
 Integration File signal 2: autoint2.e
 Quant Time: Aug 15 12:10:31 2018
 Quant Method : Z:\pestpcbsrv\HPCHEM1\ECD_Q\Method\PQ080918CLP.M
 Quant Title : GC EXTRACTABLES
 QLast Update : Mon Aug 13 07:57:53 2018
 Response via : Initial Calibration
 Integrator: ChemStation

Volume Inj. : 1 µl
 Signal #1 Phase : ZB MR1 Signal #2 Phase: ZB MR2
 Signal #1 Info : 30Mx0.32mmx 0.5µm Signal #2 Info : 30M x 0.32mm x 0.25µm

Compound	RT#1	RT#2	Resp#1	Resp#2	ng/ml	ng/ml
System Monitoring Compounds						
1) SA Tetrachlo...	4.606	3.888	56511898	55968529	28.427	28.803
2) SA Decachlor...	10.466	8.977	114.2E6	127.0E6	57.416	57.603
Target Compounds						
3) L1 AR-1016-1	5.373	4.514	4029264	594991	81.433	11.878 #
4) L1 AR-1016-2	5.470	4.986	2358365	11726475	47.360	161.254 #
5) L1 AR-1016-3	5.803	5.005	1991846	4363870	27.929	40.396 #
6) L1 AR-1016-4	5.823	5.080	1338830	5022728	19.898	70.022 #
7) L1 AR-1016-5	6.276	5.482	11870090	3822926	208.815	59.887 #
8) L2 AR-1221-1	0.000	4.113	0	2014890	N.D.	86.447 #
9) L2 AR-1221-2	4.917	4.193	1274357	5019246	65.961	280.730 #
10) L2 AR-1221-3	4.995	4.267	2240618	6960413	37.918	110.916 #
11) L3 AR-1232-1	5.803	0.000	1991846	0	44.209	N.D. #
12) L3 AR-1232-2	0.000	5.005	0	4363870	N.D.	106.172 #
13) L3 AR-1232-3	0.000	5.305	0	8514684	N.D.	492.136 #
14) L3 AR-1232-4	6.680	0.000	1139506	0	35.878	N.D. #
15) L3 AR-1232-5	6.680	5.859	1139506	1846019	39.070	86.714 #
16) L4 AR-1242-1	5.373	4.639	4029264	4071642	189.342	190.221
17) L4 AR-1242-2	6.139	5.191	6204672	6344852	167.607	151.799
18) L4 AR-1242-3	6.276	5.224	11870090	8741644	634.447	266.749 #
19) L4 AR-1242-4	0.000	6.022	0	13894115	N.D.	336.599 #
20) L4 AR-1242-5	6.419	6.072	2387087	10064545	51.076	286.830 #
21) L5 AR-1248-1	0.000	5.224	0	8741644	N.D.	129.092 #
22) L5 AR-1248-2	6.638	5.798	4396019	5717210	63.068	41.906 #
23) L5 AR-1248-3	6.680	5.859	1139506	1846019	12.543	19.933 #
24) L5 AR-1248-4	6.680	6.022	1139506	13894115	13.082	174.148 #
25) L5 AR-1248-5	6.907	6.354	6477459	26392357	112.467	365.516 #
26) L6 AR-1254-1	6.857	5.945	12834411	7260431	80.272	51.244 #
27) L6 AR-1254-2	7.124	6.261	108.2E6	9799287	1099.837	81.948 #
28) L6 AR-1254-3	7.229	6.578	13298155	8710371	74.375	48.991 #
29) L6 AR-1254-4	7.511	6.897	5399422	11342322	41.307	105.810 #
30) L6 AR-1254-5	7.776	6.997	15653629	88933839	156.094	403.115 #
31) L7 AR-1260-1	7.389	6.481	30857847	24288351	246.350	163.313 #
32) L7 AR-1260-2	7.643	6.666	60836808	57380444	403.004	321.973
33) L7 AR-1260-3	7.932	6.824	86618785	35223249	482.150	204.900 #
34) L7 AR-1260-4	8.237	7.296	36879827	37453337	285.781	270.820
35) L7 AR-1260-5	8.570	7.534	68965297	91947879	267.757	287.463
36) L8 AR-1262-1	7.284	6.354	9315894	26392357	117.063	221.332 #
37) L8 AR-1262-2	8.061	7.088	18030476	24023939	244.965	250.630
38) L8 AR-1262-3	8.323	7.393	16578009	26731564	187.873	277.688 #
39) L8 AR-1262-4	8.992	7.820	15878912	34139297	105.111	201.653 #
40) L8 AR-1262-5	9.679	8.392	17574110	20314919	176.242	177.625
41) L9 AR-1268-1	8.005	7.033	29981432	41502640	409.069	472.814

Data Path : Z:\pestpcbsrv\HPCHEM1\ECD_Q\Data\PQ081418\
 Data File : PQ031119.D
 Signal(s) : Signal #1: ECD1A.ch Signal #2: ECD2B.ch
 Acq On : 14 Aug 2018 19:32
 Operator : SM\SJ
 Sample : J4435-01
 Misc :
 ALS Vial : 21 Sample Multiplier: 1

Instrument :
 ECD_Q
 ClientSampleId :

Integration File signal 1: autoint1.e
 Integration File signal 2: autoint2.e
 Quant Time: Aug 15 12:10:31 2018
 Quant Method : Z:\pestpcbsrv\HPCHEM1\ECD_Q\Method\PQ080918CLP.M
 Quant Title : GC EXTRACTABLES
 QLast Update : Mon Aug 13 07:57:53 2018
 Response via : Initial Calibration
 Integrator: ChemStation

Volume Inj. : 1 µl
 Signal #1 Phase : ZB MR1 Signal #2 Phase: ZB MR2
 Signal #1 Info : 30Mx0.32mmx 0.5µm Signal #2 Info : 30M x 0.32mm x 0.25µm

	Compound	RT#1	RT#2	Resp#1	Resp#2	ng/ml	ng/ml
42)	L9 AR-1268-2	8.237	7.885	36879827	69171541	372.422	144.652 #
43)	L9 AR-1268-3	8.914	8.094	51744047	13308412	122.555	34.034 #
44)	L9 AR-1268-4	9.231	8.205	7247254	5561895	22.877	56.943 #
45)	L9 AR-1268-5	10.112	8.702	31027828	31898105	34.667	29.263

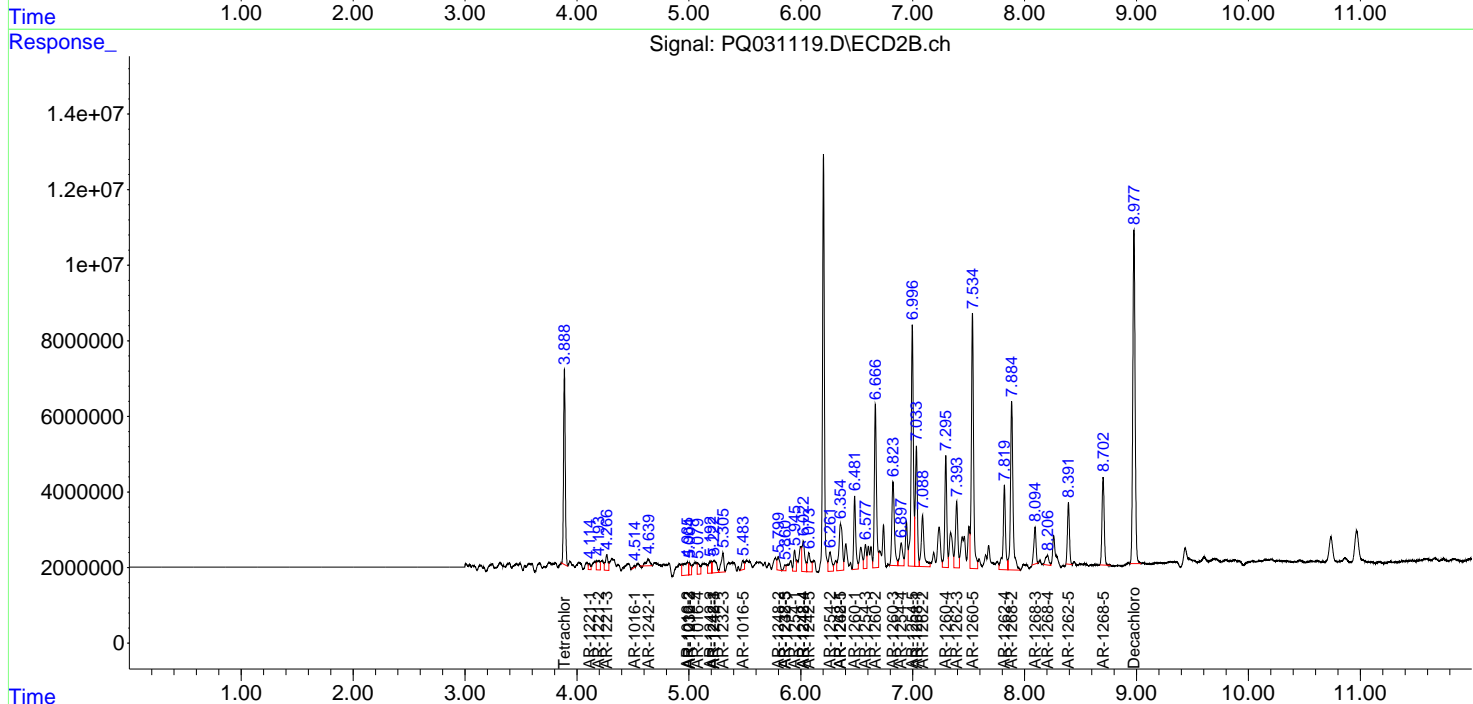
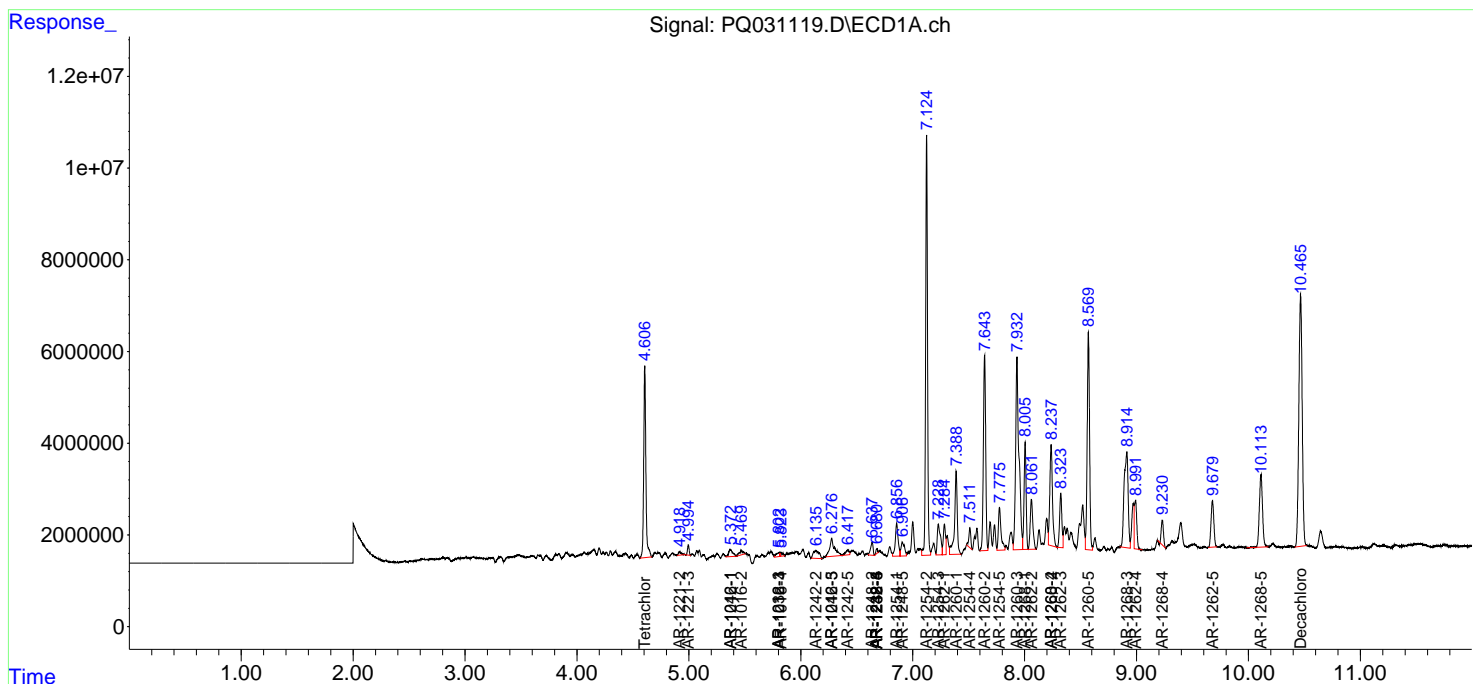
(f)=RT Delta > 1/2 Window (#)=Amounts differ by > 25% (m)=manual int.

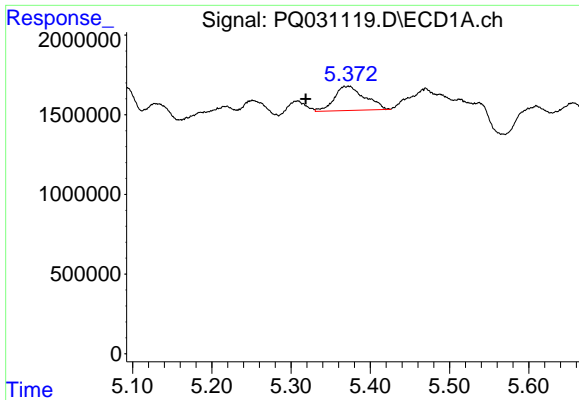
Data Path : Z:\pestpcbsrv\HPCHEM1\ECD_Q\Data\PQ081418\
 Data File : PQ031119.D
 Signal(s) : Signal #1: ECD1A.ch Signal #2: ECD2B.ch
 Acq On : 14 Aug 2018 19:32
 Operator : SM\SJ
 Sample : J4435-01
 Misc :
 ALS Vial : 21 Sample Multiplier: 1

Instrument :
 ECD_Q
 ClientSampled :

Integration File signal 1: autoint1.e
 Integration File signal 2: autoint2.e
 Quant Time: Aug 15 12:10:31 2018
 Quant Method : Z:\pestpcbsrv\HPCHEM1\ECD_Q\Method\PQ080918CLP.M
 Quant Title : GC EXTRACTABLES
 QLast Update : Mon Aug 13 07:57:53 2018
 Response via : Initial Calibration
 Integrator: ChemStation

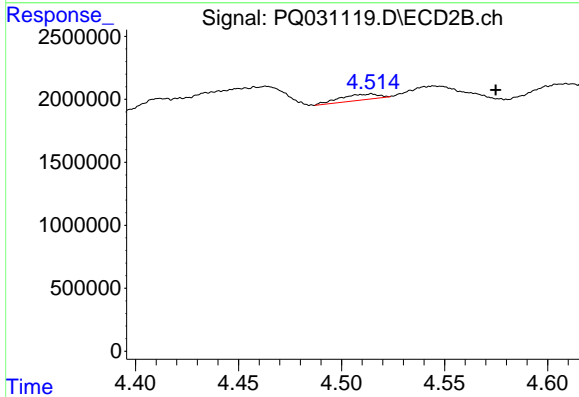
Volume Inj. : 1 µl
 Signal #1 Phase : ZB MR1 Signal #2 Phase: ZB MR2
 Signal #1 Info : 30Mx0.32mmx 0.5µm Signal #2 Info : 30M x 0.32mm x 0.25µm



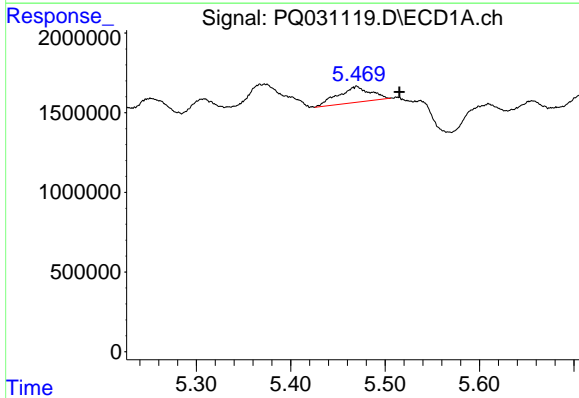


#3 AR-1016-1
 R.T.: 5.373 min
 Delta R.T.: 0.054 min
 Response: 4029264
 Conc: 81.43 ng/ml

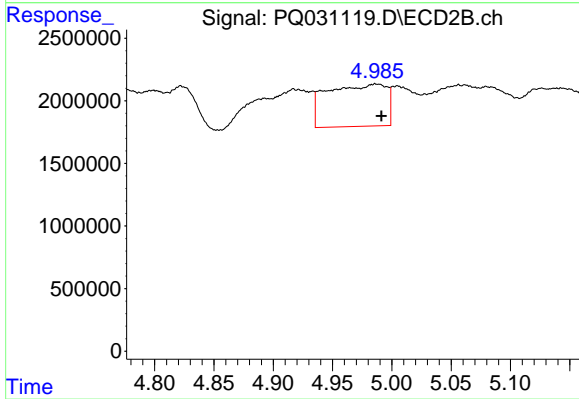
Instrument :
 ECD_Q
 ClientSampled :



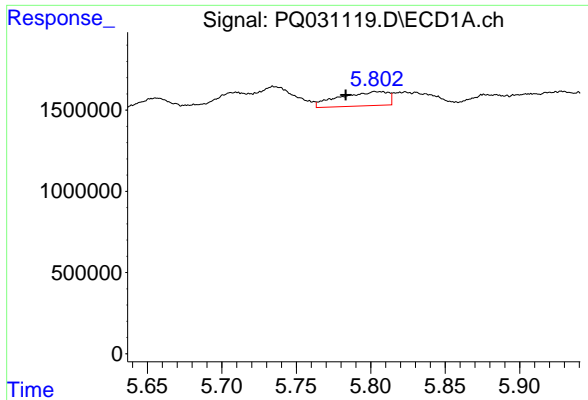
#3 AR-1016-1
 R.T.: 4.514 min
 Delta R.T.: -0.060 min
 Response: 594991
 Conc: 11.88 ng/ml



#4 AR-1016-2
 R.T.: 5.470 min
 Delta R.T.: -0.045 min
 Response: 2358365
 Conc: 47.36 ng/ml

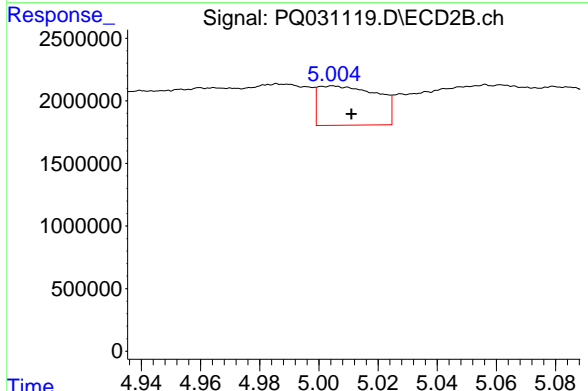


#4 AR-1016-2
 R.T.: 4.986 min
 Delta R.T.: -0.005 min
 Response: 11726475
 Conc: 161.25 ng/ml

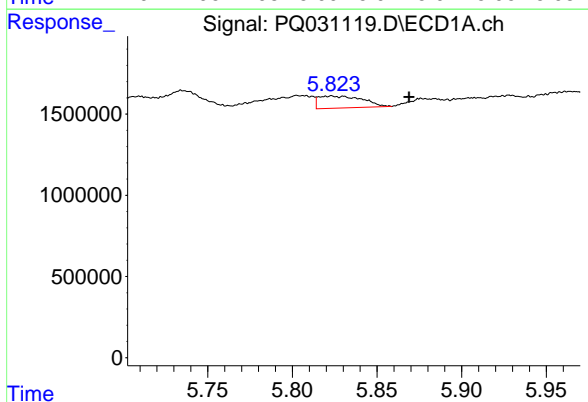


#5 AR-1016-3
 R.T.: 5.803 min
 Delta R.T.: 0.020 min
 Response: 1991846
 Conc: 27.93 ng/ml

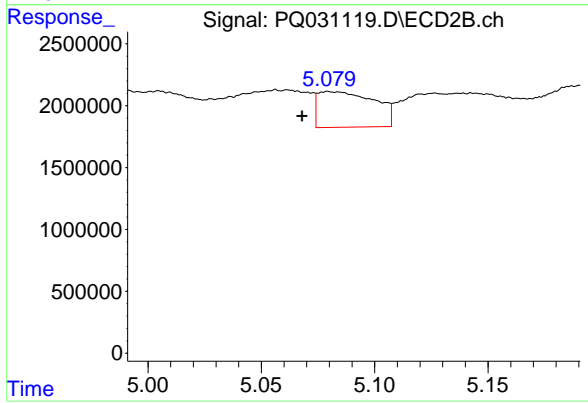
Instrument :
 ECD_Q
 ClientSampleId :



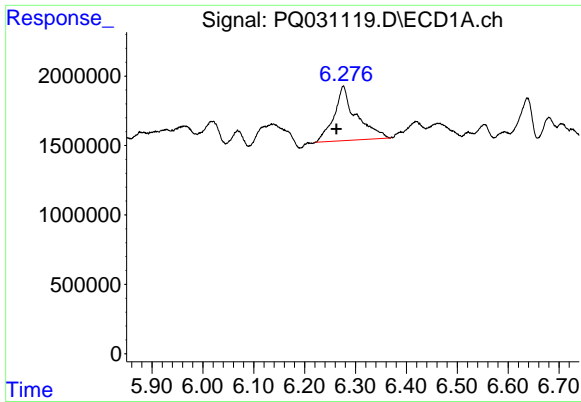
#5 AR-1016-3
 R.T.: 5.005 min
 Delta R.T.: -0.006 min
 Response: 4363870
 Conc: 40.40 ng/ml



#6 AR-1016-4
 R.T.: 5.823 min
 Delta R.T.: -0.046 min
 Response: 1338830
 Conc: 19.90 ng/ml



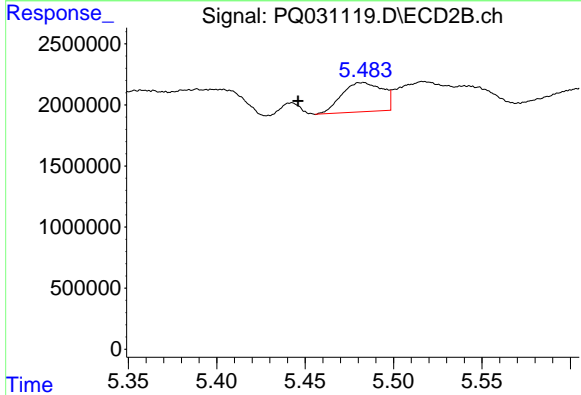
#6 AR-1016-4
 R.T.: 5.080 min
 Delta R.T.: 0.011 min
 Response: 5022728
 Conc: 70.02 ng/ml



#7 AR-1016-5

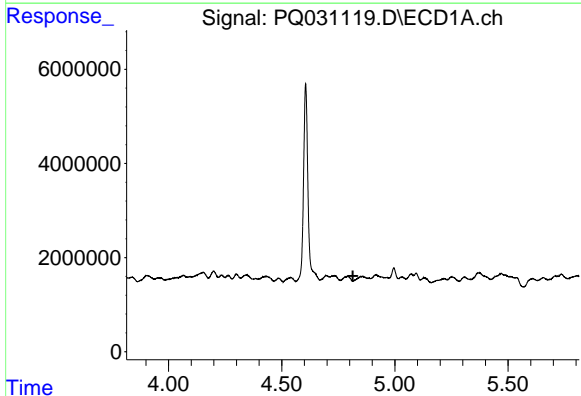
R.T.: 6.276 min
 Delta R.T.: 0.013 min
 Response: 11870090
 Conc: 208.82 ng/ml

Instrument :
 ECD_Q
 ClientSampleId :



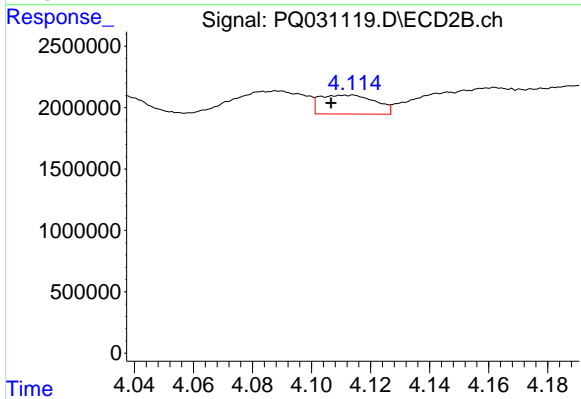
#7 AR-1016-5

R.T.: 5.482 min
 Delta R.T.: 0.036 min
 Response: 3822926
 Conc: 59.89 ng/ml



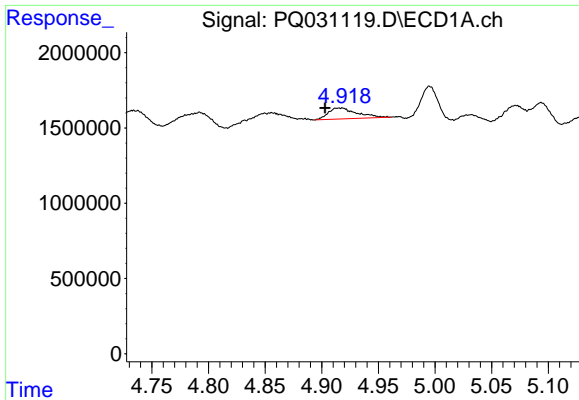
#8 AR-1221-1

R.T.: 0.000 min
 Exp R.T. : 4.815 min
 Response: 0
 Conc: N.D.



#8 AR-1221-1

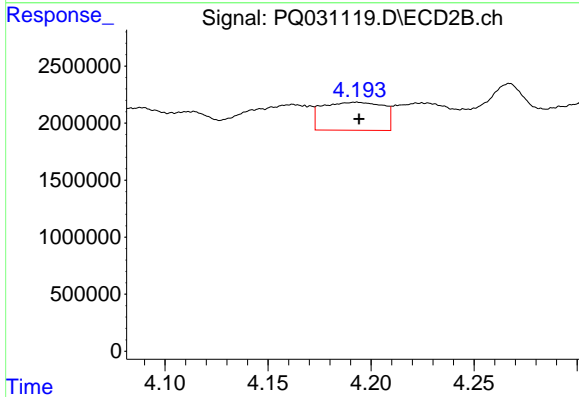
R.T.: 4.113 min
 Delta R.T.: 0.007 min
 Response: 2014890
 Conc: 86.45 ng/ml



#9 AR-1221-2

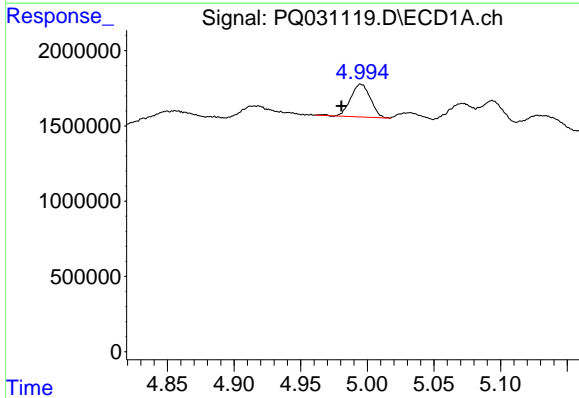
R.T.: 4.917 min
 Delta R.T.: 0.014 min
 Response: 1274357
 Conc: 65.96 ng/ml

Instrument :
 ECD_Q
 ClientSampleId :



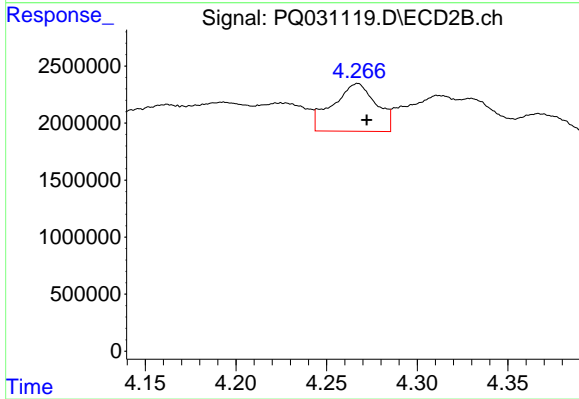
#9 AR-1221-2

R.T.: 4.193 min
 Delta R.T.: -0.001 min
 Response: 5019246
 Conc: 280.73 ng/ml



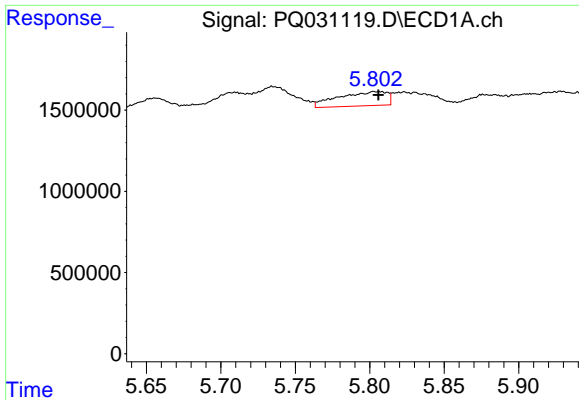
#10 AR-1221-3

R.T.: 4.995 min
 Delta R.T.: 0.015 min
 Response: 2240618
 Conc: 37.92 ng/ml



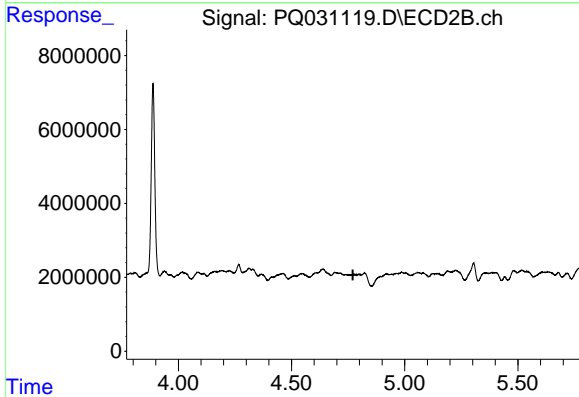
#10 AR-1221-3

R.T.: 4.267 min
 Delta R.T.: -0.005 min
 Response: 6960413
 Conc: 110.92 ng/ml

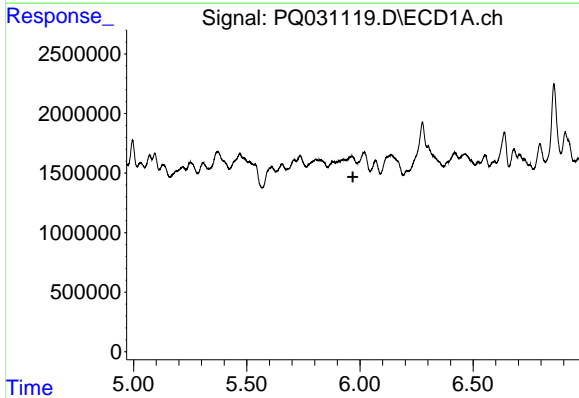


#11 AR-1232-1
 R.T.: 5.803 min
 Delta R.T.: -0.003 min
 Response: 1991846
 Conc: 44.21 ng/ml

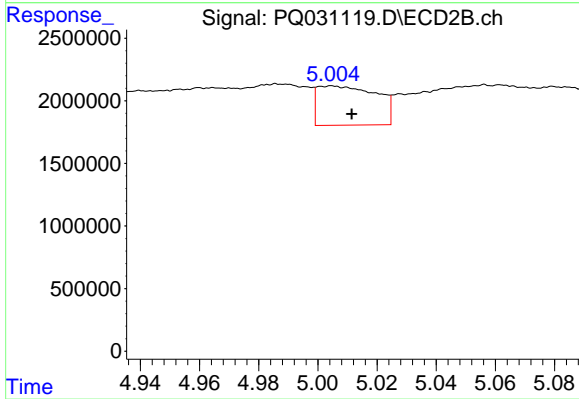
Instrument :
 ECD_Q
 ClientSampled :



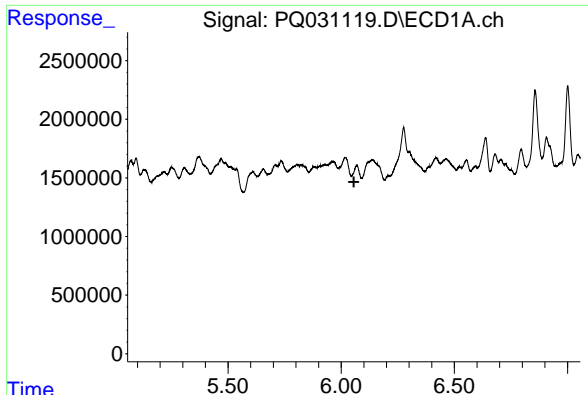
#11 AR-1232-1
 R.T.: 0.000 min
 Exp R.T. : 4.771 min
 Response: 0
 Conc: N.D.



#12 AR-1232-2
 R.T.: 0.000 min
 Exp R.T. : 5.969 min
 Response: 0
 Conc: N.D.



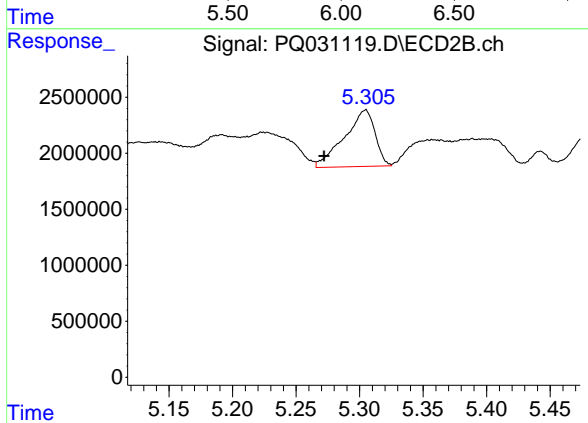
#12 AR-1232-2
 R.T.: 5.005 min
 Delta R.T.: -0.007 min
 Response: 4363870
 Conc: 106.17 ng/ml



#13 AR-1232-3

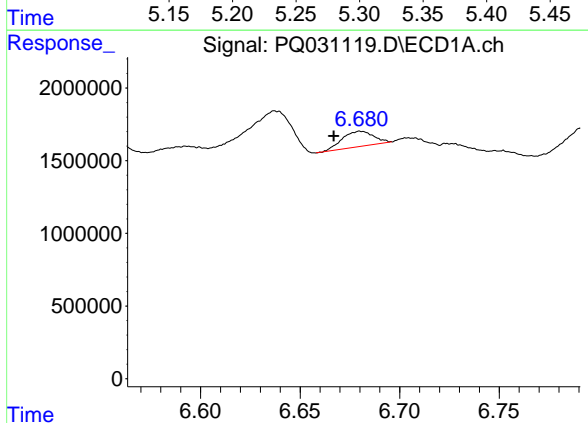
R.T.: 0.000 min
 Exp R.T.: 6.056 min
 Response: 0
 Conc: N.D.

Instrument :
 ECD_Q
 ClientSampleId :



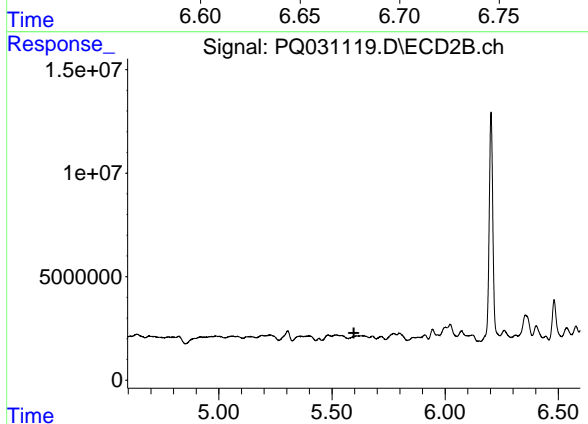
#13 AR-1232-3

R.T.: 5.305 min
 Delta R.T.: 0.032 min
 Response: 8514684
 Conc: 492.14 ng/ml



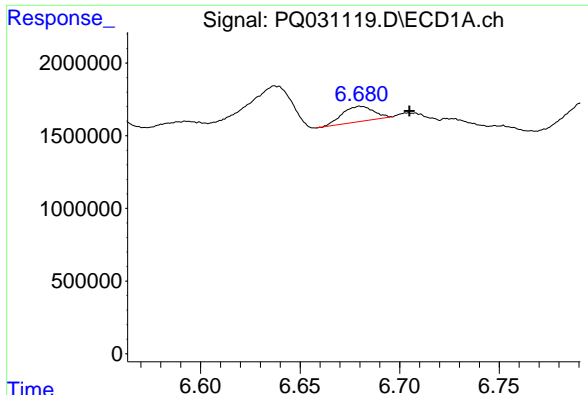
#14 AR-1232-4

R.T.: 6.680 min
 Delta R.T.: 0.013 min
 Response: 1139506
 Conc: 35.88 ng/ml



#14 AR-1232-4

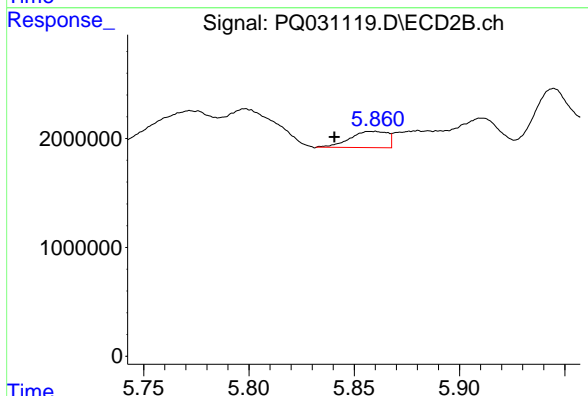
R.T.: 0.000 min
 Exp R.T.: 5.597 min
 Response: 0
 Conc: N.D.



#15 AR-1232-5

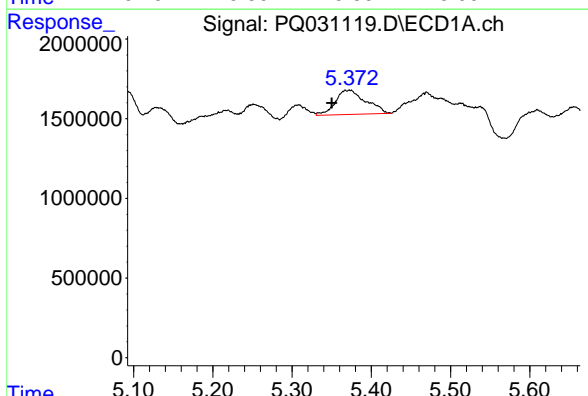
R.T.: 6.680 min
 Delta R.T.: -0.024 min
 Response: 1139506
 Conc: 39.07 ng/ml

Instrument :
 ECD_Q
 ClientSampleId :



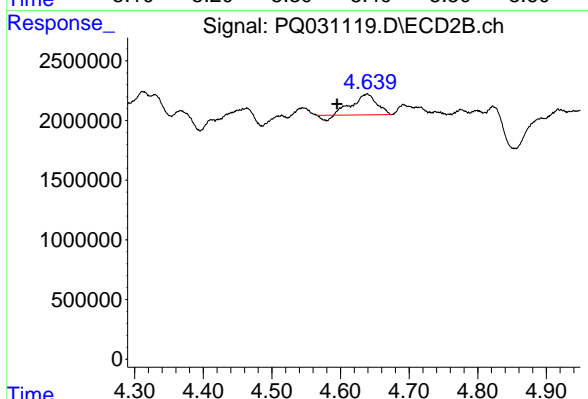
#15 AR-1232-5

R.T.: 5.859 min
 Delta R.T.: 0.018 min
 Response: 1846019
 Conc: 86.71 ng/ml



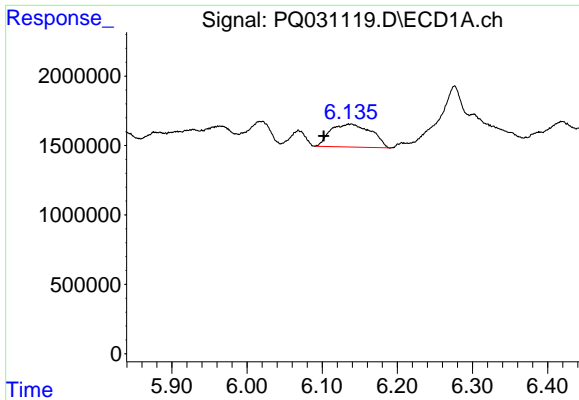
#16 AR-1242-1

R.T.: 5.373 min
 Delta R.T.: 0.023 min
 Response: 4029264
 Conc: 189.34 ng/ml



#16 AR-1242-1

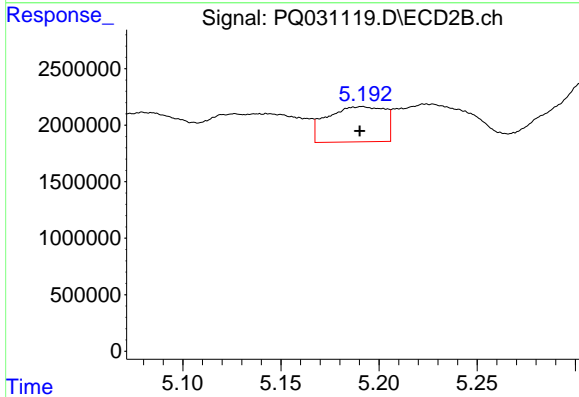
R.T.: 4.639 min
 Delta R.T.: 0.044 min
 Response: 4071642
 Conc: 190.22 ng/ml



#17 AR-1242-2

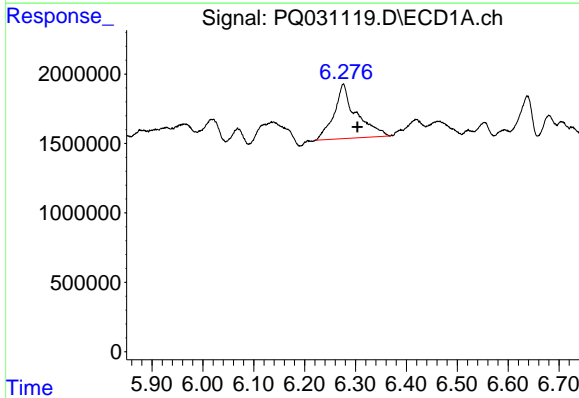
R.T.: 6.139 min
 Delta R.T.: 0.037 min
 Response: 6204672
 Conc: 167.61 ng/ml

Instrument :
 ECD_Q
 ClientSampleId :



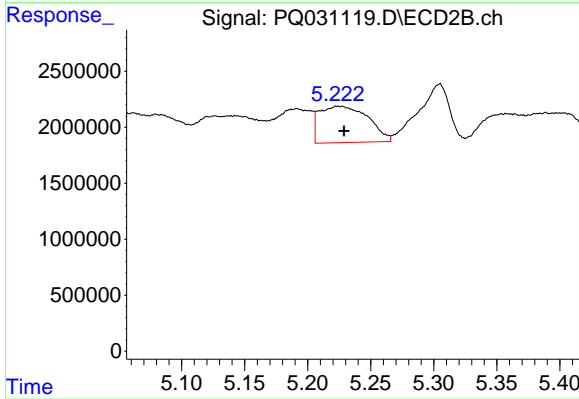
#17 AR-1242-2

R.T.: 5.191 min
 Delta R.T.: 0.001 min
 Response: 6344852
 Conc: 151.80 ng/ml



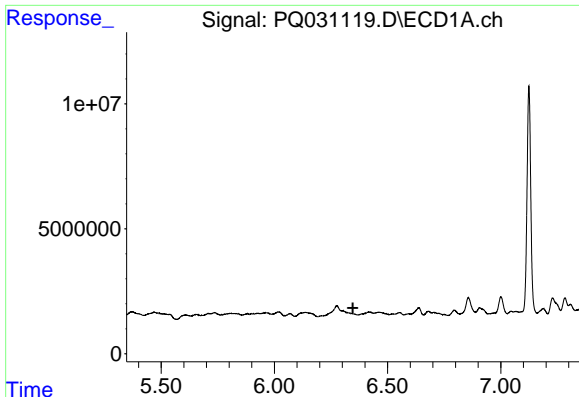
#18 AR-1242-3

R.T.: 6.276 min
 Delta R.T.: -0.027 min
 Response: 11870090
 Conc: 634.45 ng/ml



#18 AR-1242-3

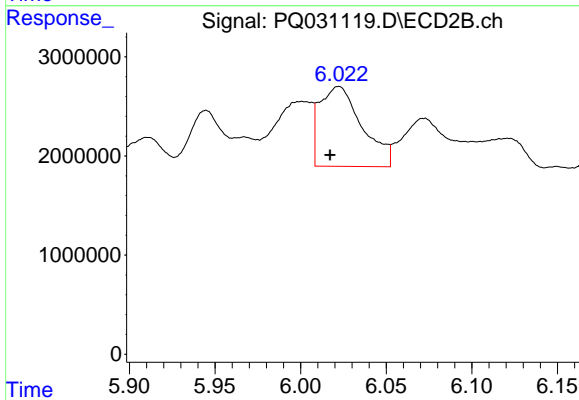
R.T.: 5.224 min
 Delta R.T.: -0.005 min
 Response: 8741644
 Conc: 266.75 ng/ml



#19 AR-1242-4

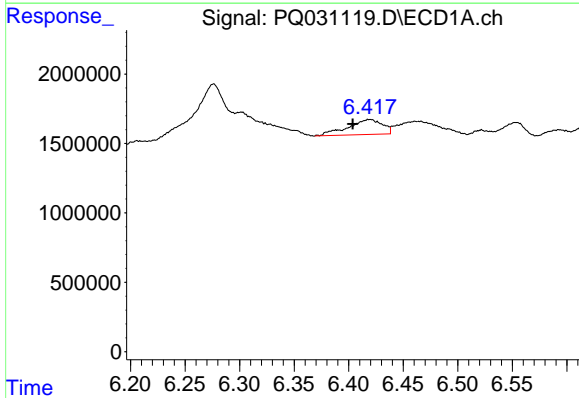
R.T.: 0.000 min
 Exp R.T.: 6.347 min
 Response: 0
 Conc: N.D.

Instrument :
 ECD_Q
 ClientSampled :



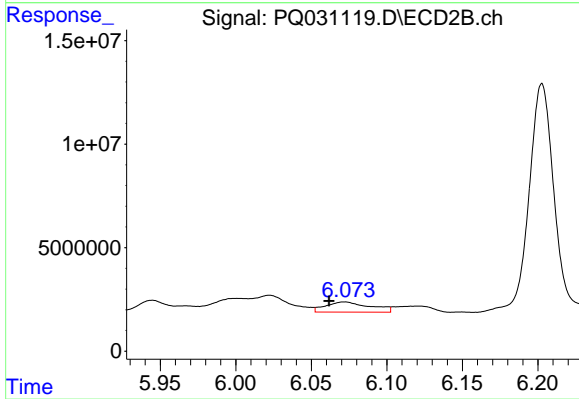
#19 AR-1242-4

R.T.: 6.022 min
 Delta R.T.: 0.005 min
 Response: 13894115
 Conc: 336.60 ng/ml



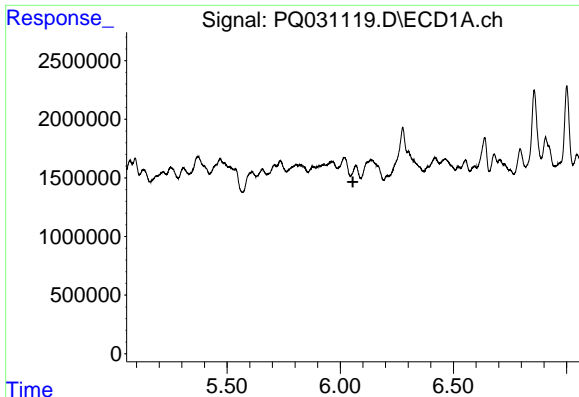
#20 AR-1242-5

R.T.: 6.419 min
 Delta R.T.: 0.016 min
 Response: 2387087
 Conc: 51.08 ng/ml



#20 AR-1242-5

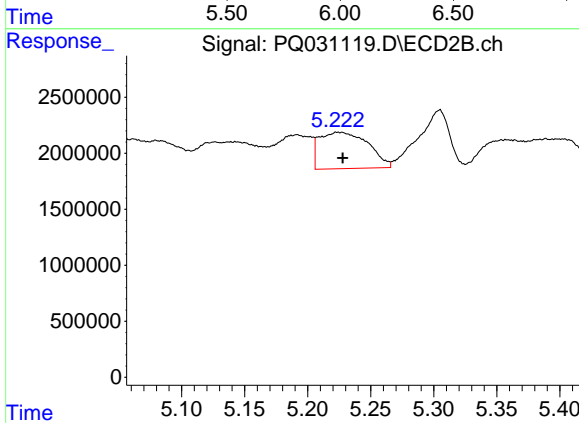
R.T.: 6.072 min
 Delta R.T.: 0.010 min
 Response: 10064545
 Conc: 286.83 ng/ml



#21 AR-1248-1

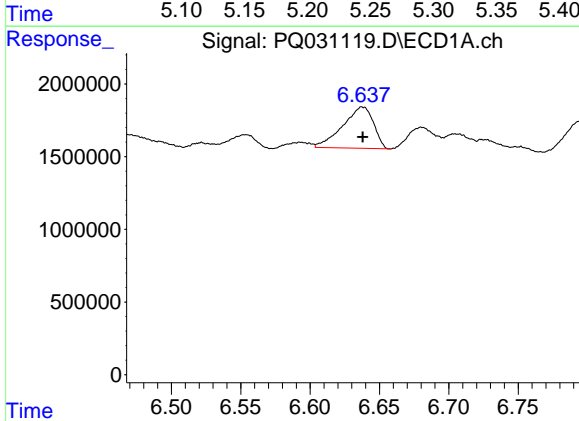
R.T.: 0.000 min
 Exp R.T.: 6.056 min
 Response: 0
 Conc: N.D.

Instrument :
 ECD_Q
 ClientSampled :



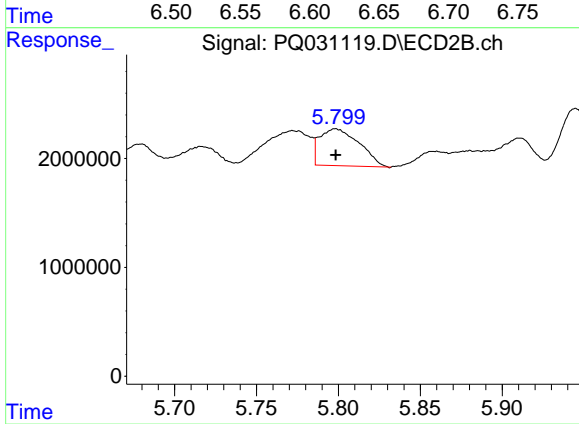
#21 AR-1248-1

R.T.: 5.224 min
 Delta R.T.: -0.004 min
 Response: 8741644
 Conc: 129.09 ng/ml



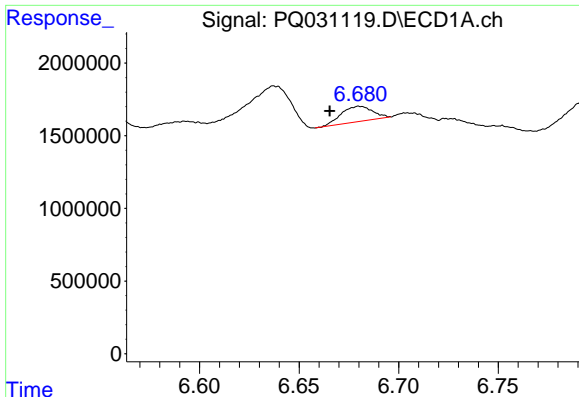
#22 AR-1248-2

R.T.: 6.638 min
 Delta R.T.: 0.000 min
 Response: 4396019
 Conc: 63.07 ng/ml



#22 AR-1248-2

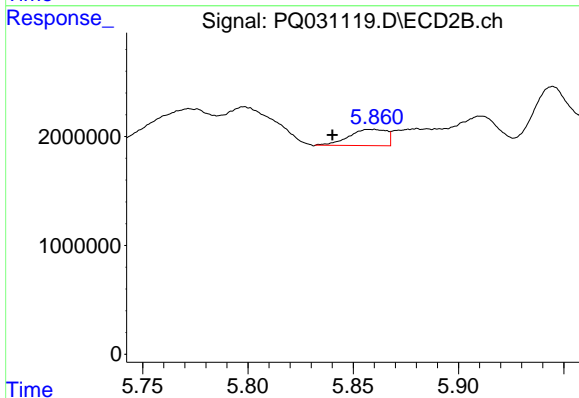
R.T.: 5.798 min
 Delta R.T.: 0.000 min
 Response: 5717210
 Conc: 41.91 ng/ml



#23 AR-1248-3

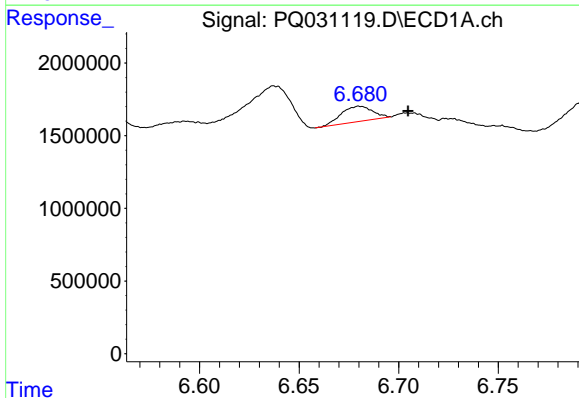
R.T.: 6.680 min
 Delta R.T.: 0.015 min
 Response: 1139506
 Conc: 12.54 ng/ml

Instrument :
 ECD_Q
 ClientSampled :



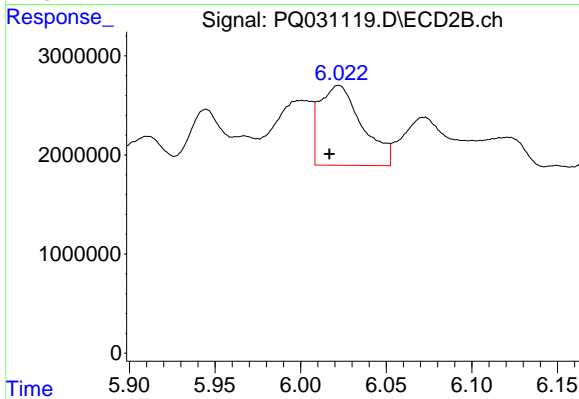
#23 AR-1248-3

R.T.: 5.859 min
 Delta R.T.: 0.019 min
 Response: 1846019
 Conc: 19.93 ng/ml



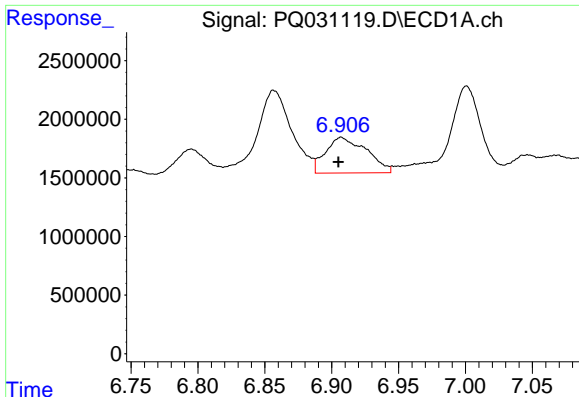
#24 AR-1248-4

R.T.: 6.680 min
 Delta R.T.: -0.024 min
 Response: 1139506
 Conc: 13.08 ng/ml



#24 AR-1248-4

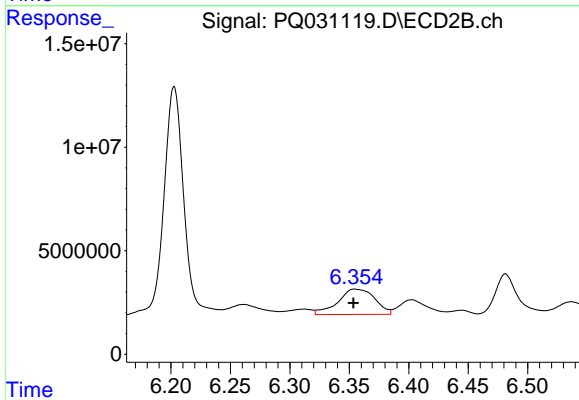
R.T.: 6.022 min
 Delta R.T.: 0.005 min
 Response: 13894115
 Conc: 174.15 ng/ml



#25 AR-1248-5

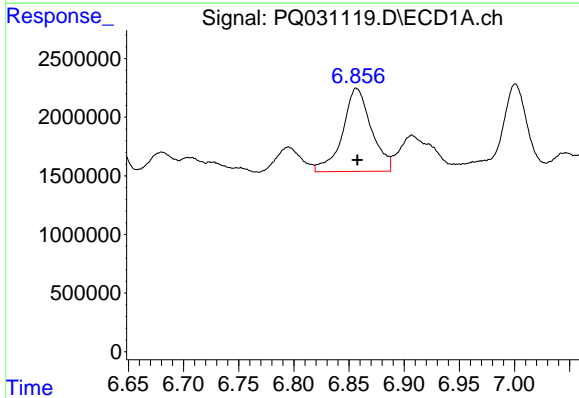
R.T.: 6.907 min
 Delta R.T.: 0.002 min
 Response: 6477459
 Conc: 112.47 ng/ml

Instrument :
 ECD_Q
 ClientSampleId :



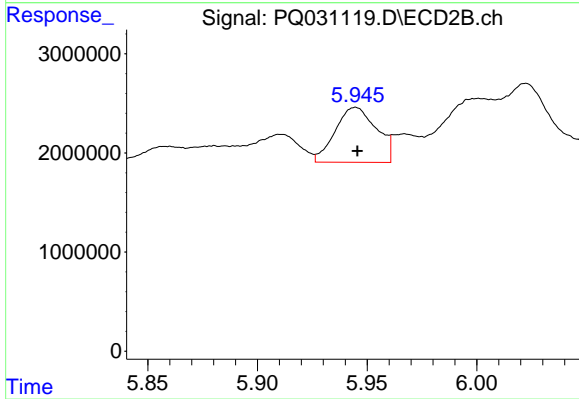
#25 AR-1248-5

R.T.: 6.354 min
 Delta R.T.: 0.001 min
 Response: 26392357
 Conc: 365.52 ng/ml



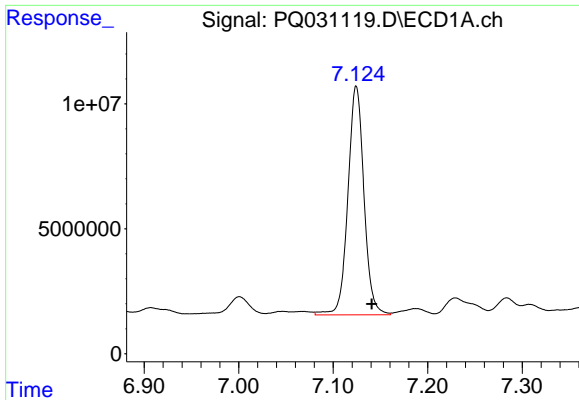
#26 AR-1254-1

R.T.: 6.857 min
 Delta R.T.: 0.000 min
 Response: 12834411
 Conc: 80.27 ng/ml



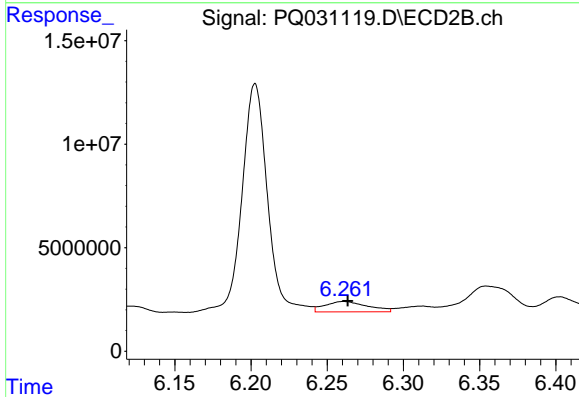
#26 AR-1254-1

R.T.: 5.945 min
 Delta R.T.: 0.000 min
 Response: 7260431
 Conc: 51.24 ng/ml

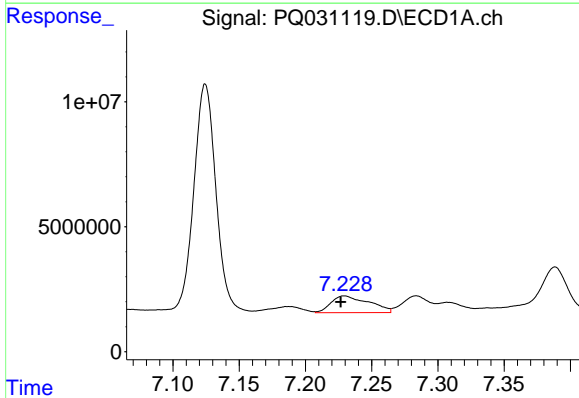


#27 AR-1254-2
 R.T.: 7.124 min
 Delta R.T.: -0.016 min
 Response: 108210923
 Conc: 1099.84 ng/ml

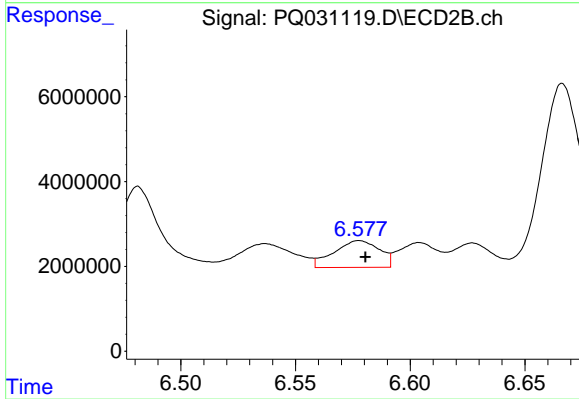
Instrument :
 ECD_Q
 ClientSampleId :



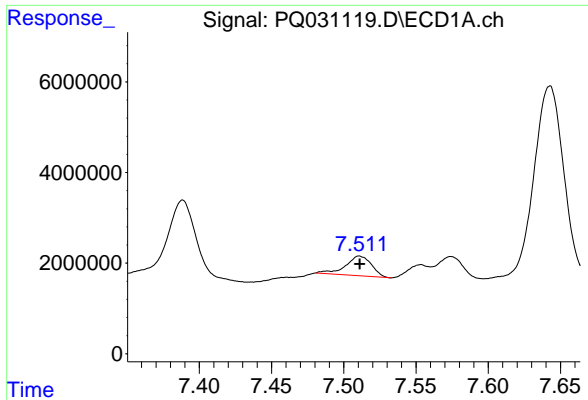
#27 AR-1254-2
 R.T.: 6.261 min
 Delta R.T.: -0.002 min
 Response: 9799287
 Conc: 81.95 ng/ml



#28 AR-1254-3
 R.T.: 7.229 min
 Delta R.T.: 0.003 min
 Response: 13298155
 Conc: 74.37 ng/ml



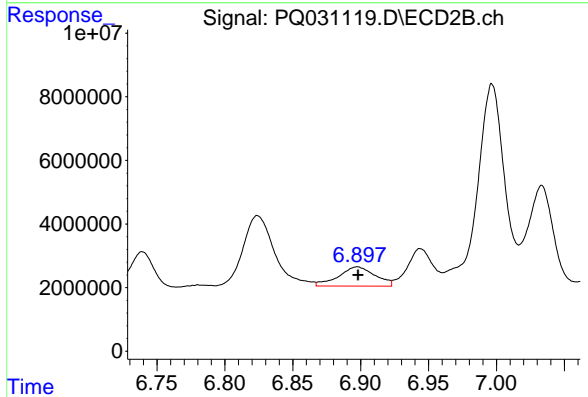
#28 AR-1254-3
 R.T.: 6.578 min
 Delta R.T.: -0.003 min
 Response: 8710371
 Conc: 48.99 ng/ml



#29 AR-1254-4

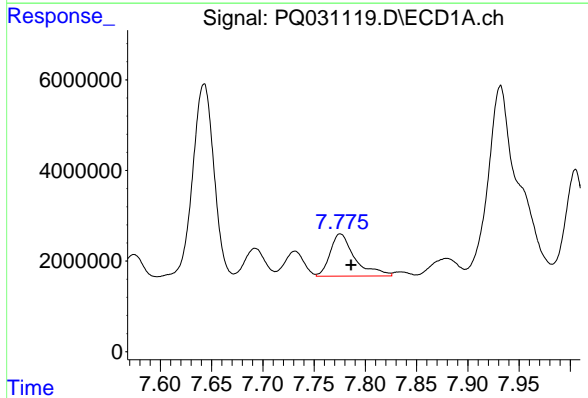
R.T.: 7.511 min
 Delta R.T.: 0.000 min
 Response: 5399422
 Conc: 41.31 ng/ml

Instrument :
 ECD_Q
 ClientSampled :



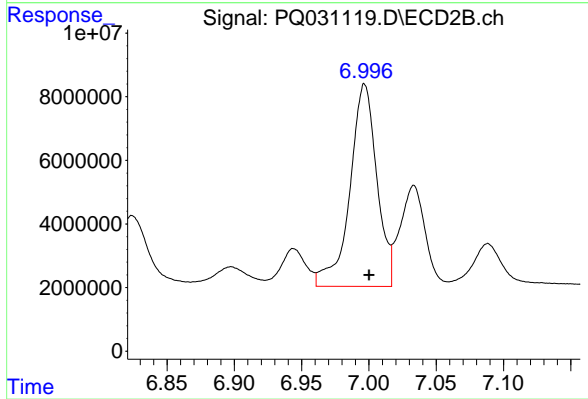
#29 AR-1254-4

R.T.: 6.897 min
 Delta R.T.: 0.000 min
 Response: 11342322
 Conc: 105.81 ng/ml



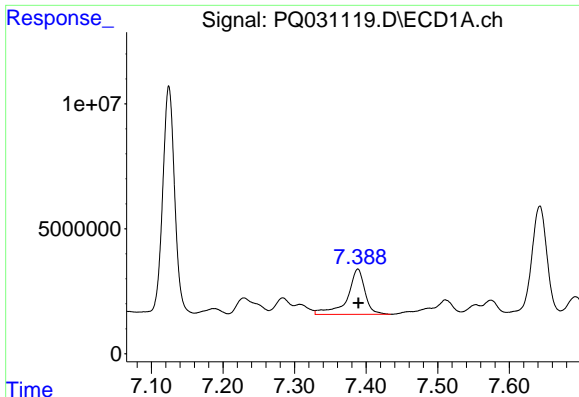
#30 AR-1254-5

R.T.: 7.776 min
 Delta R.T.: -0.011 min
 Response: 15653629
 Conc: 156.09 ng/ml



#30 AR-1254-5

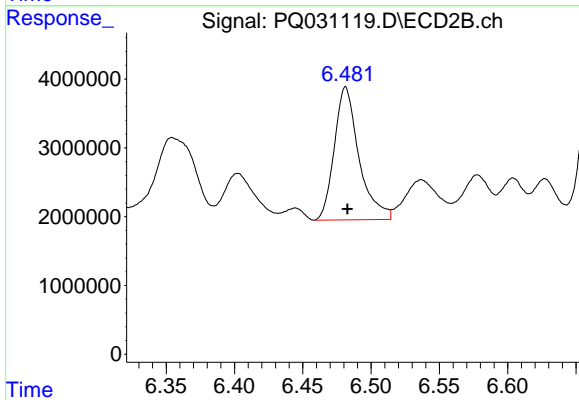
R.T.: 6.997 min
 Delta R.T.: -0.003 min
 Response: 88933839
 Conc: 403.11 ng/ml



#31 AR-1260-1

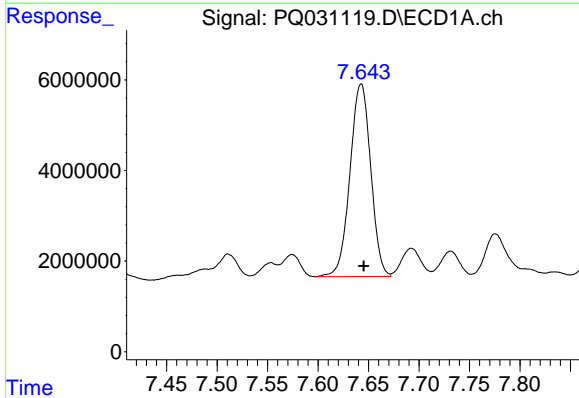
R.T.: 7.389 min
 Delta R.T.: 0.000 min
 Response: 30857847
 Conc: 246.35 ng/ml

Instrument :
 ECD_Q
 ClientSampled :



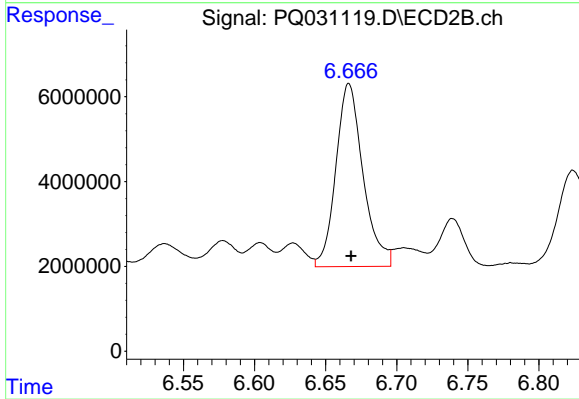
#31 AR-1260-1

R.T.: 6.481 min
 Delta R.T.: -0.001 min
 Response: 24288351
 Conc: 163.31 ng/ml



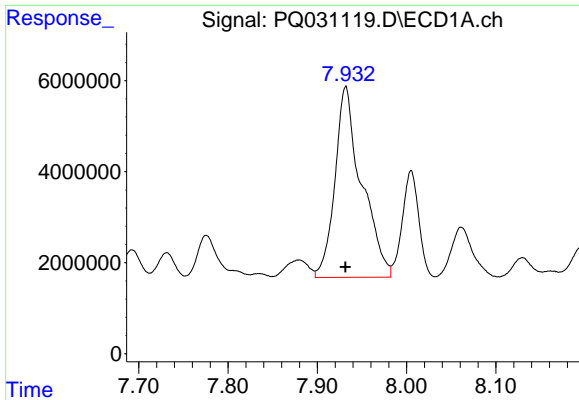
#32 AR-1260-2

R.T.: 7.643 min
 Delta R.T.: -0.002 min
 Response: 60836808
 Conc: 403.00 ng/ml



#32 AR-1260-2

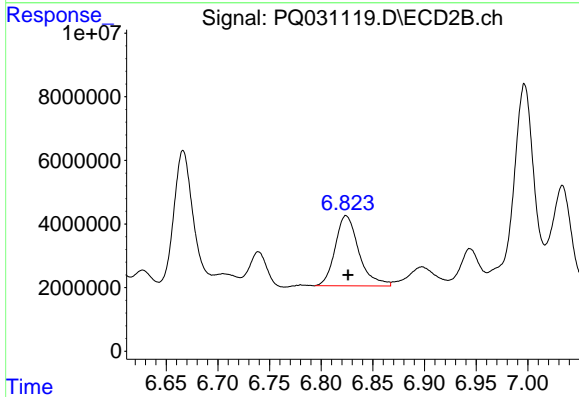
R.T.: 6.666 min
 Delta R.T.: -0.002 min
 Response: 57380444
 Conc: 321.97 ng/ml



#33 AR-1260-3

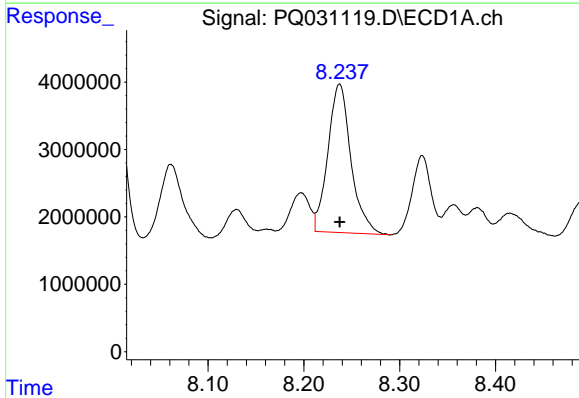
R.T.: 7.932 min
 Delta R.T.: 0.000 min
 Response: 86618785
 Conc: 482.15 ng/ml

Instrument :
 ECD_Q
 ClientSampled :



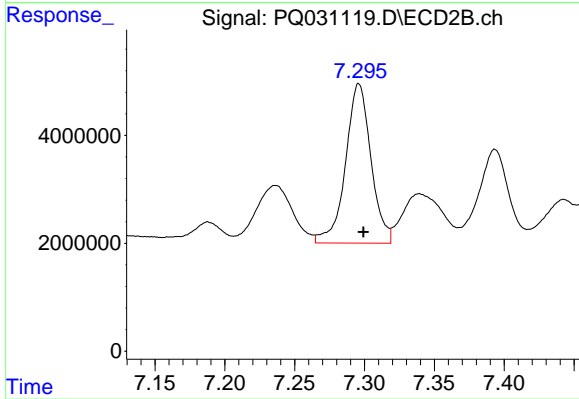
#33 AR-1260-3

R.T.: 6.824 min
 Delta R.T.: -0.002 min
 Response: 35223249
 Conc: 204.90 ng/ml



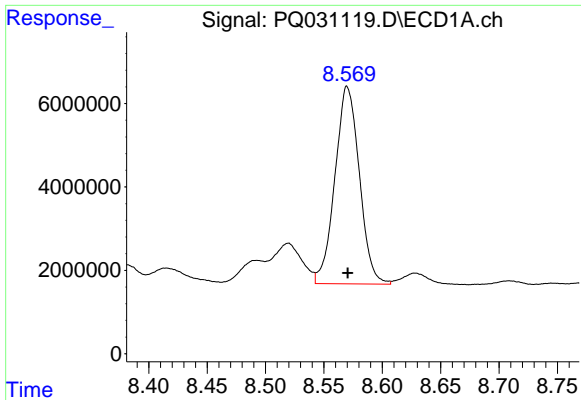
#34 AR-1260-4

R.T.: 8.237 min
 Delta R.T.: 0.000 min
 Response: 36879827
 Conc: 285.78 ng/ml



#34 AR-1260-4

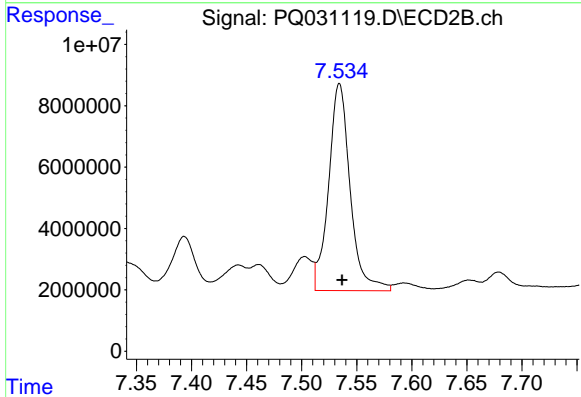
R.T.: 7.296 min
 Delta R.T.: -0.003 min
 Response: 37453337
 Conc: 270.82 ng/ml



#35 AR-1260-5

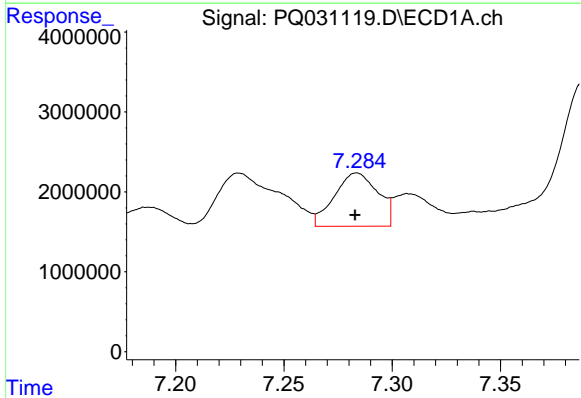
R.T.: 8.570 min
 Delta R.T.: 0.000 min
 Response: 68965297
 Conc: 267.76 ng/ml

Instrument :
 ECD_Q
 ClientSampleId :



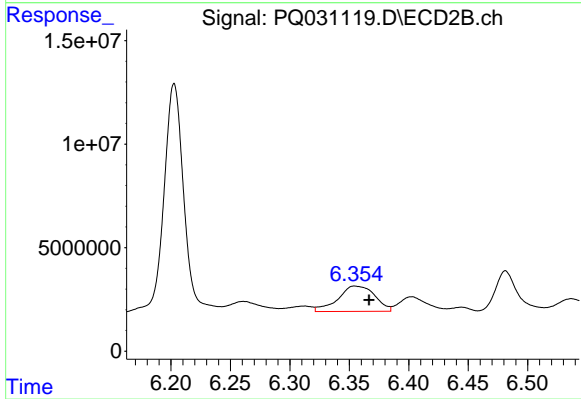
#35 AR-1260-5

R.T.: 7.534 min
 Delta R.T.: -0.002 min
 Response: 91947879
 Conc: 287.46 ng/ml



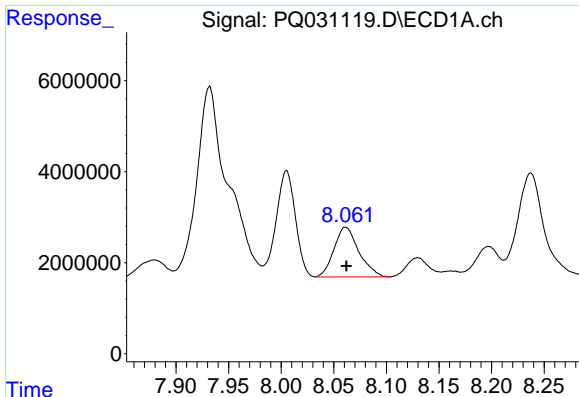
#36 AR-1262-1

R.T.: 7.284 min
 Delta R.T.: 0.000 min
 Response: 9315894
 Conc: 117.06 ng/ml



#36 AR-1262-1

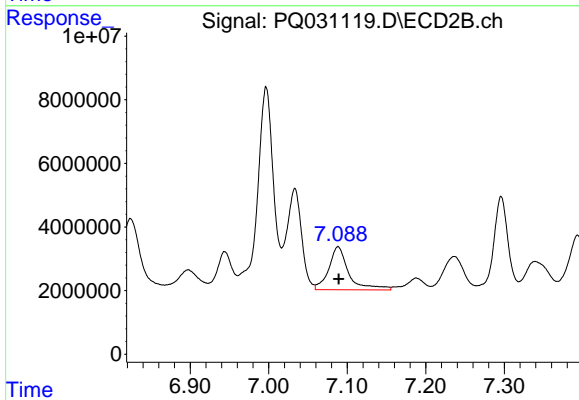
R.T.: 6.354 min
 Delta R.T.: -0.012 min
 Response: 26392357
 Conc: 221.33 ng/ml



#37 AR-1262-2

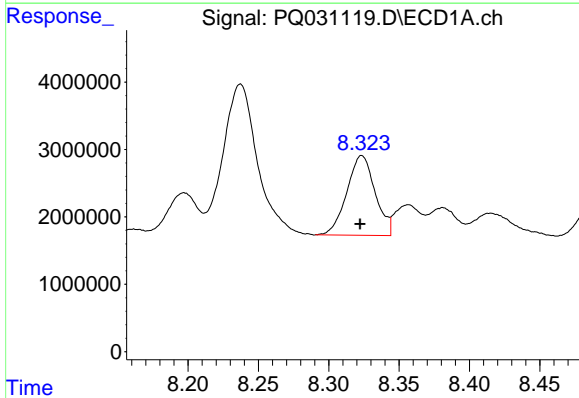
R.T.: 8.061 min
 Delta R.T.: 0.000 min
 Response: 18030476
 Conc: 244.97 ng/ml

Instrument :
 ECD_Q
 ClientSampled :



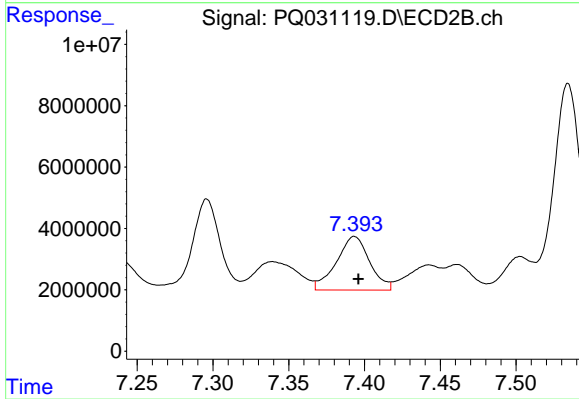
#37 AR-1262-2

R.T.: 7.088 min
 Delta R.T.: 0.000 min
 Response: 24023939
 Conc: 250.63 ng/ml



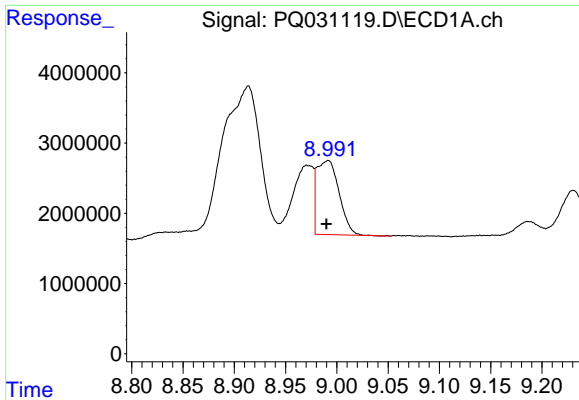
#38 AR-1262-3

R.T.: 8.323 min
 Delta R.T.: 0.001 min
 Response: 16578009
 Conc: 187.87 ng/ml



#38 AR-1262-3

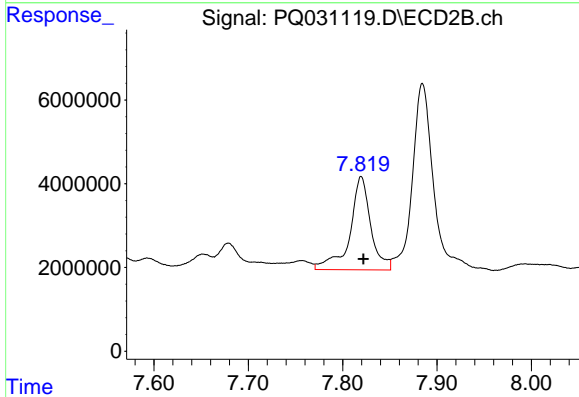
R.T.: 7.393 min
 Delta R.T.: -0.003 min
 Response: 26731564
 Conc: 277.69 ng/ml



#39 AR-1262-4

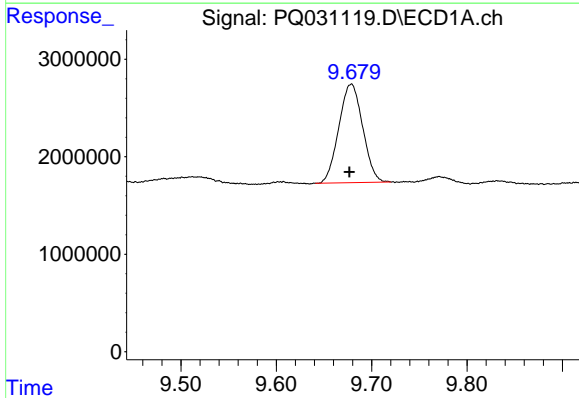
R.T.: 8.992 min
 Delta R.T.: 0.002 min
 Response: 15878912
 Conc: 105.11 ng/ml

Instrument :
 ECD_Q
 ClientSampled :



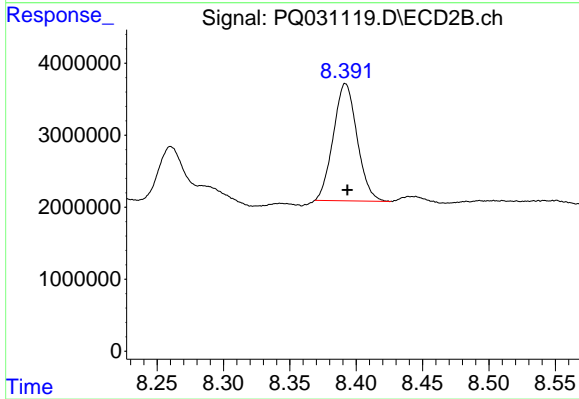
#39 AR-1262-4

R.T.: 7.820 min
 Delta R.T.: -0.002 min
 Response: 34139297
 Conc: 201.65 ng/ml



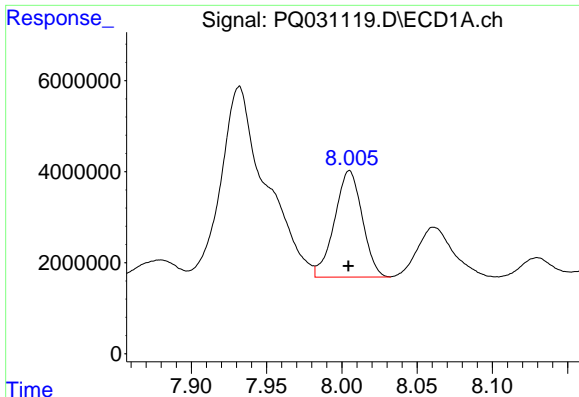
#40 AR-1262-5

R.T.: 9.679 min
 Delta R.T.: 0.002 min
 Response: 17574110
 Conc: 176.24 ng/ml



#40 AR-1262-5

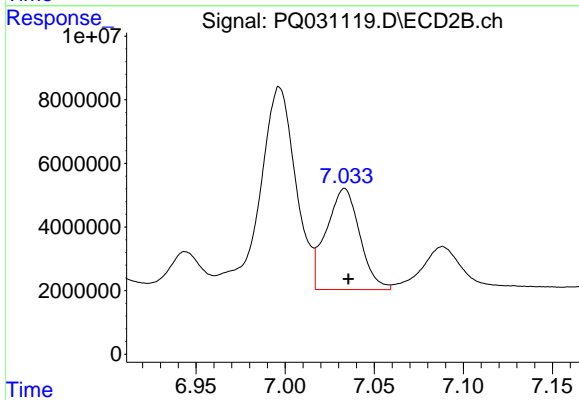
R.T.: 8.392 min
 Delta R.T.: -0.001 min
 Response: 20314919
 Conc: 177.62 ng/ml



#41 AR-1268-1

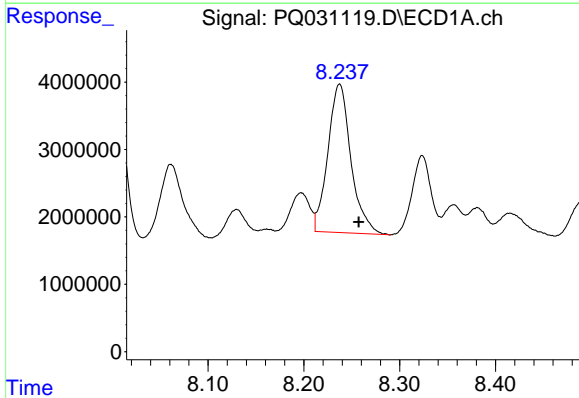
R.T.: 8.005 min
 Delta R.T.: 0.000 min
 Response: 29981432
 Conc: 409.07 ng/ml

Instrument :
 ECD_Q
 ClientSampleId :



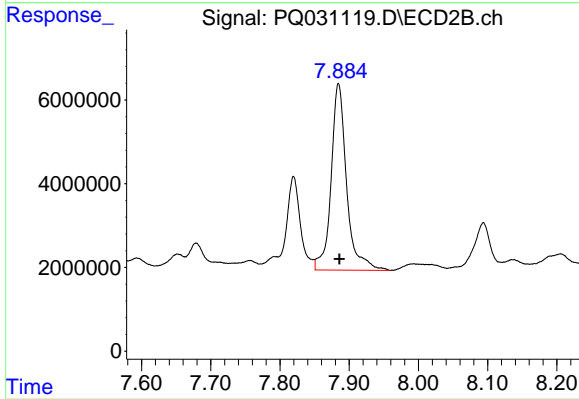
#41 AR-1268-1

R.T.: 7.033 min
 Delta R.T.: -0.002 min
 Response: 41502640
 Conc: 472.81 ng/ml



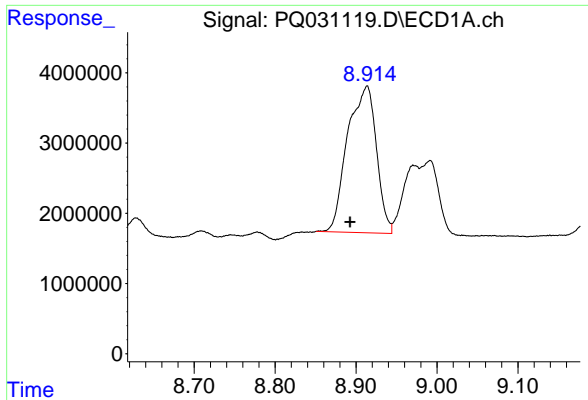
#42 AR-1268-2

R.T.: 8.237 min
 Delta R.T.: -0.020 min
 Response: 36879827
 Conc: 372.42 ng/ml



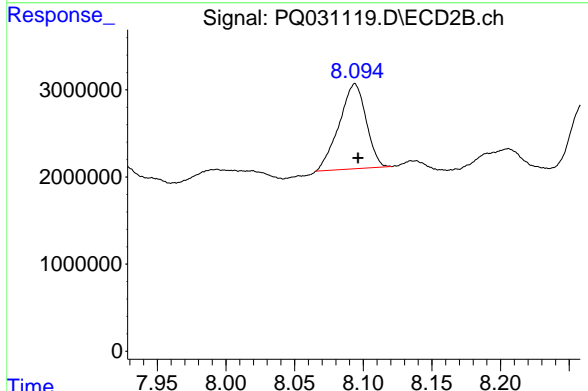
#42 AR-1268-2

R.T.: 7.885 min
 Delta R.T.: -0.001 min
 Response: 69171541
 Conc: 144.65 ng/ml

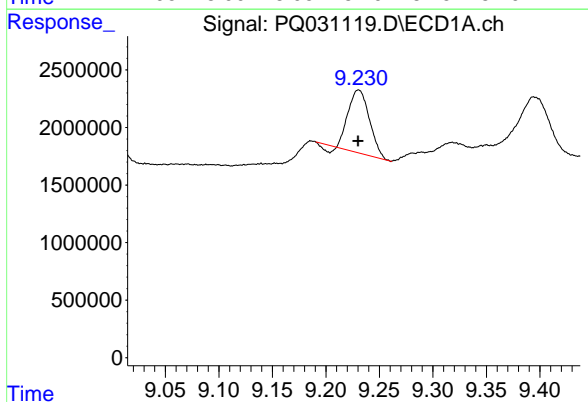


#43 AR-1268-3
 R.T.: 8.914 min
 Delta R.T.: 0.021 min
 Response: 51744047
 Conc: 122.55 ng/ml

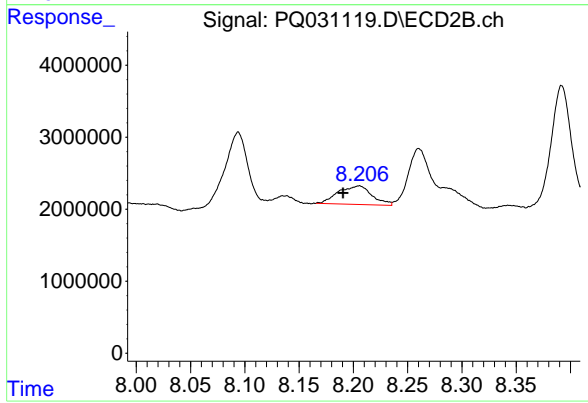
Instrument :
 ECD_Q
 ClientSampleId :



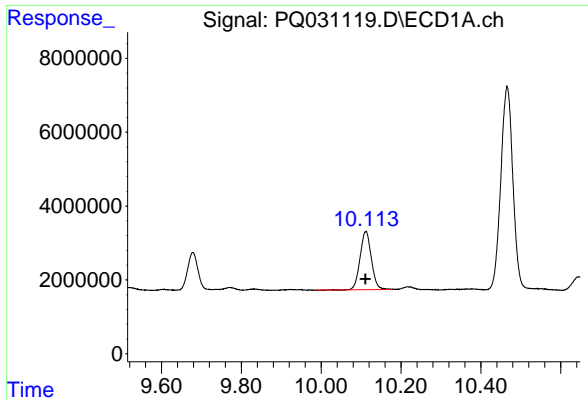
#43 AR-1268-3
 R.T.: 8.094 min
 Delta R.T.: -0.002 min
 Response: 13308412
 Conc: 34.03 ng/ml



#44 AR-1268-4
 R.T.: 9.231 min
 Delta R.T.: 0.000 min
 Response: 7247254
 Conc: 22.88 ng/ml



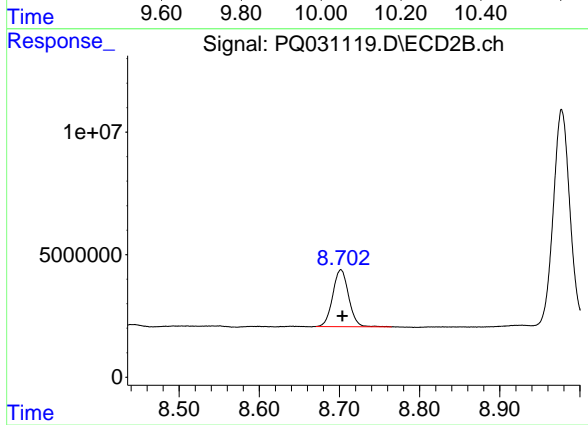
#44 AR-1268-4
 R.T.: 8.205 min
 Delta R.T.: 0.015 min
 Response: 5561895
 Conc: 56.94 ng/ml



#45 AR-1268-5

R.T.: 10.112 min
Delta R.T.: 0.001 min
Response: 31027828
Conc: 34.67 ng/ml

Instrument :
ECD_Q
ClientSampled :



#45 AR-1268-5

R.T.: 8.702 min
Delta R.T.: -0.002 min
Response: 31898105
Conc: 29.26 ng/ml