

Data Path : Z:\pestpcbsrv\HPCHEM1\ECD_Q\Data\PQ081418\
 Data File : PQ031145.D
 Signal(s) : Signal #1: ECD1A.ch Signal #2: ECD2B.ch
 Acq On : 15 Aug 2018 01:50
 Operator : SM\SJ
 Sample : J4434-11
 Misc :
 ALS Vial : 49 Sample Multiplier: 1

Instrument :
 ECD_Q
 ClientSampled :

Integration File signal 1: autoint1.e
 Integration File signal 2: autoint2.e
 Quant Time: Aug 15 12:16:11 2018
 Quant Method : Z:\pestpcbsrv\HPCHEM1\ECD_Q\Method\PQ080918CLP.M
 Quant Title : GC EXTRACTABLES
 QLast Update : Mon Aug 13 07:57:53 2018
 Response via : Initial Calibration
 Integrator: ChemStation

Volume Inj. : 1 µl
 Signal #1 Phase : ZB MR1 Signal #2 Phase: ZB MR2
 Signal #1 Info : 30Mx0.32mmx 0.5µm Signal #2 Info : 30M x 0.32mm x 0.25µm

Compound	RT#1	RT#2	Resp#1	Resp#2	ng/ml	ng/ml
System Monitoring Compounds						
1) SA Tetrachlo...	4.605	3.888	50058356	49619790	25.181	25.535
2) SA Decachlor...	10.465	8.976	130.9E6	146.7E6	65.818	66.535
Target Compounds						
4) L1 AR-1016-2	5.494	4.932	3600688	5511260	72.307	75.787
5) L1 AR-1016-3	5.806	0.000	3010118	0	42.207	N.D. #
6) L1 AR-1016-4	5.806	0.000	3010118	0	44.737	N.D. #
7) L1 AR-1016-5	6.263	5.442	2608577	1674045	45.889	26.224 #
8) L2 AR-1221-1	0.000	4.091	0	2402349	N.D.	103.071 #
9) L2 AR-1221-2	0.000	4.195	0	3749298	N.D.	209.701 #
10) L2 AR-1221-3	0.000	4.267	0	3427345	N.D.	54.616 #
11) L3 AR-1232-1	5.806	0.000	3010118	0	66.809	N.D. #
13) L3 AR-1232-3	6.058	5.302	1604071	3532624	110.275	204.180 #
14) L3 AR-1232-4	6.680	0.000	14376169	0	452.642	N.D. #
15) L3 AR-1232-5	6.680	5.798	14376169	11409703	492.908	535.954
17) L4 AR-1242-2	6.058	5.226	1604071	2514344	43.331	60.155 #
18) L4 AR-1242-3	6.263	5.226	2608577	2514344	139.427	76.724 #
19) L4 AR-1242-4	6.416	6.020	1329790	35055798	97.088	849.263 #
20) L4 AR-1242-5	6.416	6.071	1329790	15437033	28.453	439.940 #
21) L5 AR-1248-1	6.058	5.226	1604071	2514344	24.784	37.131 #
22) L5 AR-1248-2	6.638	5.798	7535557	11409703	108.110	83.632
23) L5 AR-1248-3	6.680	5.798	14376169	11409703	158.247	123.201
24) L5 AR-1248-4	6.680	6.020	14376169	35055798	165.042	439.388 #
25) L5 AR-1248-5	6.926	6.363	8687338	40214446	150.837	556.942 #
26) L6 AR-1254-1	6.857	5.943	12619801	11819704	78.929	83.423
27) L6 AR-1254-2	7.123	6.261	18173414	11535342	184.711	96.466 #
28) L6 AR-1254-3	7.230	6.578	9499820	8510217	53.131	47.865
29) L6 AR-1254-4	7.510	6.901	6641265	9445416	50.807	88.114 #
30) L6 AR-1254-5	7.775	6.996	16896261	86637757	168.486	392.707 #
31) L7 AR-1260-1	7.388	6.481	33185000	38430353	264.928	258.402
32) L7 AR-1260-2	7.642	6.666	60902914	59220993	403.442	332.301
33) L7 AR-1260-3	7.930	6.825	82012735	43871692	456.511	255.209 #
34) L7 AR-1260-4	8.238	7.296	54180192	54539844	419.842	394.371
35) L7 AR-1260-5	8.569	7.534	103.3E6	136.0E6	400.978	425.339
36) L8 AR-1262-1	7.282	6.363	13428549	40214446	168.742	337.247 #
37) L8 AR-1262-2	8.060	7.087	49663609	25813262	674.739	269.297 #
38) L8 AR-1262-3	8.323	7.394	28275706	32798723	320.440	340.714
39) L8 AR-1262-4	8.990	7.819	19914449	39715965	131.824	234.593 #
40) L8 AR-1262-5	9.678	8.391	25368239	28909731	254.406	252.774
41) L9 AR-1268-1	8.007	7.034	166.9E6	58741553	2277.687	669.207 #
42) L9 AR-1268-2	8.238	7.883	54180192	88229231	547.125	184.506 #
43) L9 AR-1268-3	8.913	8.094	78760471	23811390	186.543	60.894 #
44) L9 AR-1268-4	9.229	8.189	20521150	5341298	64.778	54.684

Data Path : Z:\pestpcbsrv\HPCHEM1\ECD_Q\Data\PQ081418\
 Data File : PQ031145.D
 Signal(s) : Signal #1: ECD1A.ch Signal #2: ECD2B.ch
 Acq On : 15 Aug 2018 01:50
 Operator : SM\SJ
 Sample : J4434-11
 Misc :
 ALS Vial : 49 Sample Multiplier: 1

Instrument :
 ECD_Q
 ClientSampleId :

Integration File signal 1: autoint1.e
 Integration File signal 2: autoint2.e
 Quant Time: Aug 15 12:16:11 2018
 Quant Method : Z:\pestpcbsrv\HPCHEM1\ECD_Q\Method\PQ080918CLP.M
 Quant Title : GC EXTRACTABLES
 QLast Update : Mon Aug 13 07:57:53 2018
 Response via : Initial Calibration
 Integrator: ChemStation

Volume Inj. : 1 µl
 Signal #1 Phase : ZB MR1 Signal #2 Phase: ZB MR2
 Signal #1 Info : 30Mx0.32mmx 0.5µm Signal #2 Info : 30M x 0.32mm x 0.25µm

	Compound	RT#1	RT#2	Resp#1	Resp#2	ng/ml	ng/ml
45)	L9 AR-1268-5	10.110	8.701	72406546	63483845	80.900	58.239 #

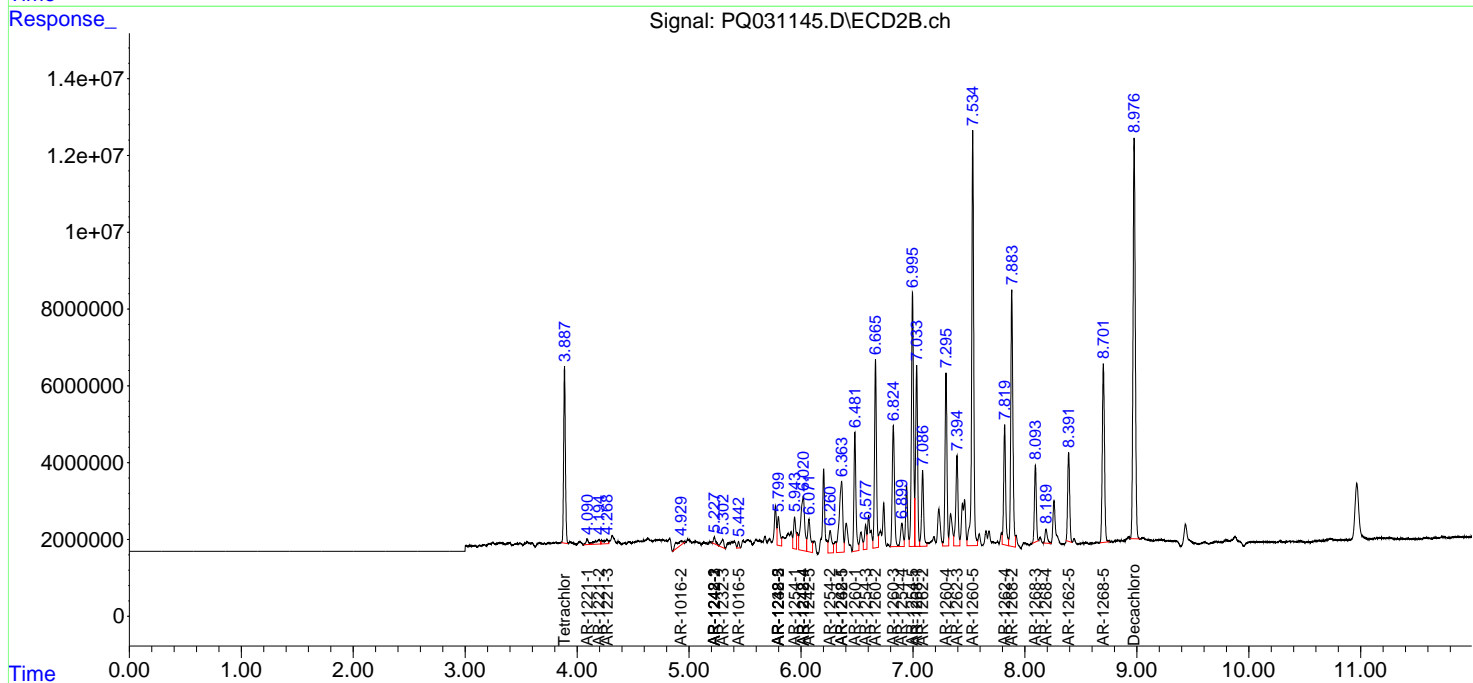
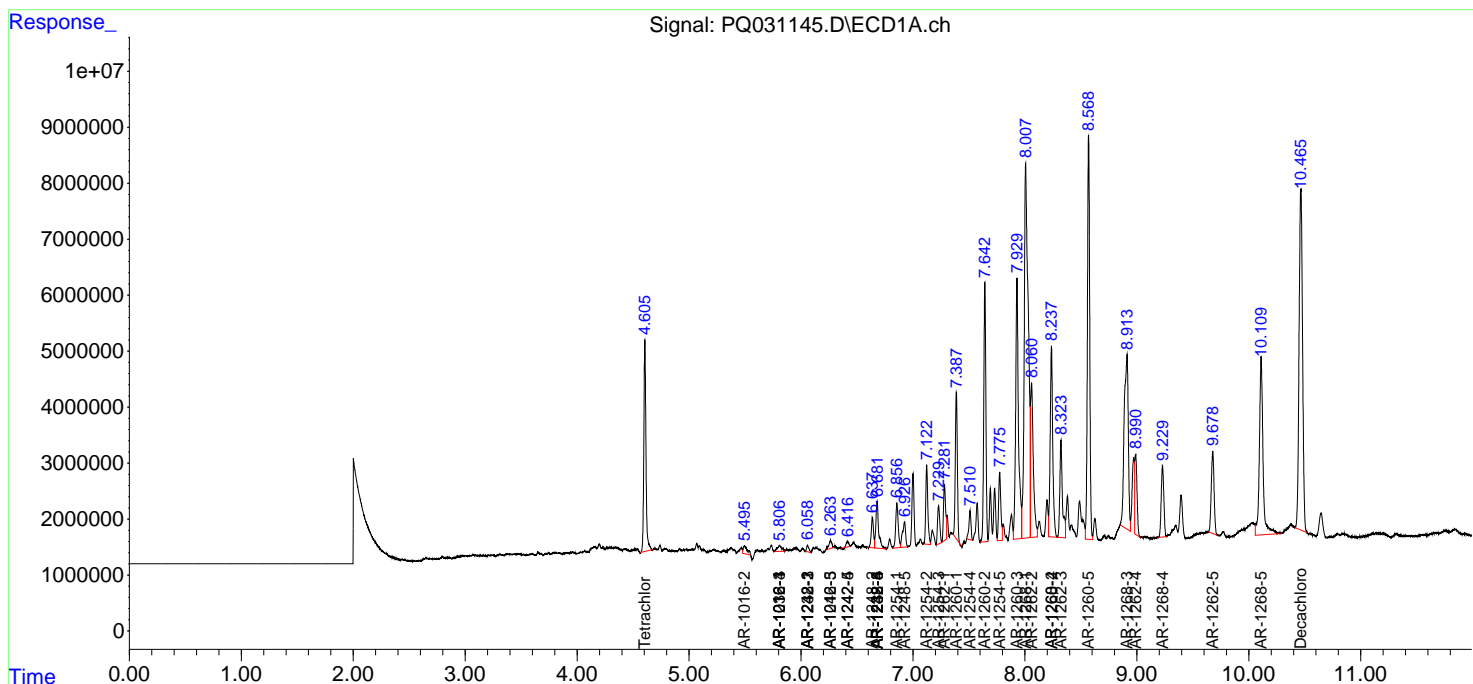
(f)=RT Delta > 1/2 Window (#)=Amounts differ by > 25% (m)=manual int.

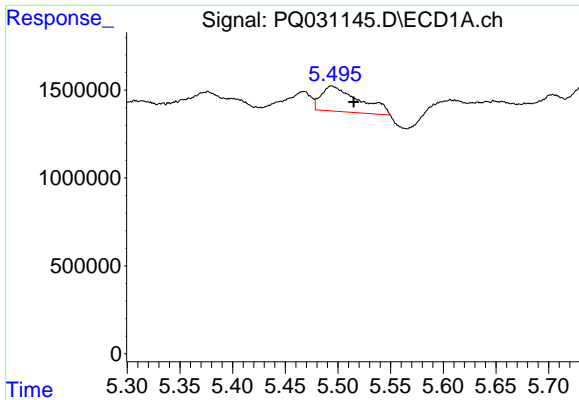
Data Path : Z:\pestpcbsrv\HPCHEM1\ECD_Q\Data\PQ081418\
 Data File : PQ031145.D
 Signal(s) : Signal #1: ECD1A.ch Signal #2: ECD2B.ch
 Acq On : 15 Aug 2018 01:50
 Operator : SM\SJ
 Sample : J4434-11
 Misc :
 ALS Vial : 49 Sample Multiplier: 1

Instrument :
 ECD_Q
 ClientSampled :

Integration File signal 1: autoint1.e
 Integration File signal 2: autoint2.e
 Quant Time: Aug 15 12:16:11 2018
 Quant Method : Z:\pestpcbsrv\HPCHEM1\ECD_Q\Method\PQ080918CLP.M
 Quant Title : GC EXTRACTABLES
 QLast Update : Mon Aug 13 07:57:53 2018
 Response via : Initial Calibration
 Integrator: ChemStation

Volume Inj. : 1 µl
 Signal #1 Phase : ZB MR1 Signal #2 Phase: ZB MR2
 Signal #1 Info : 30Mx0.32mmx 0.5µm Signal #2 Info : 30M x 0.32mm x 0.25µm

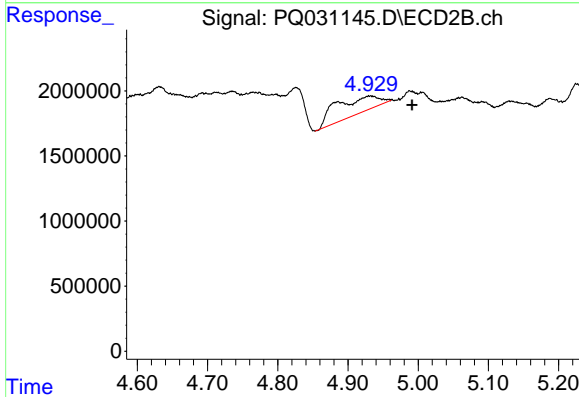




#4 AR-1016-2

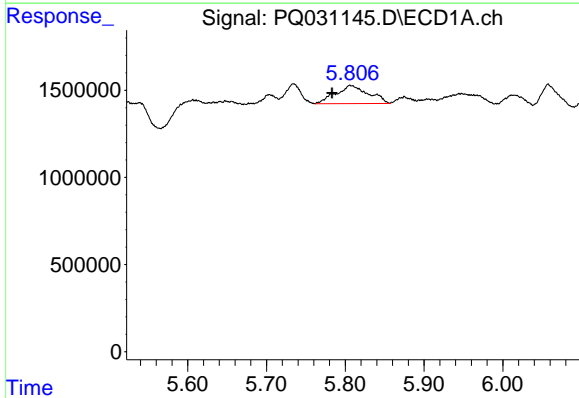
R.T.: 5.494 min
 Delta R.T.: -0.021 min
 Response: 3600688
 Conc: 72.31 ng/ml

Instrument :
 ECD_Q
 ClientSampleId :



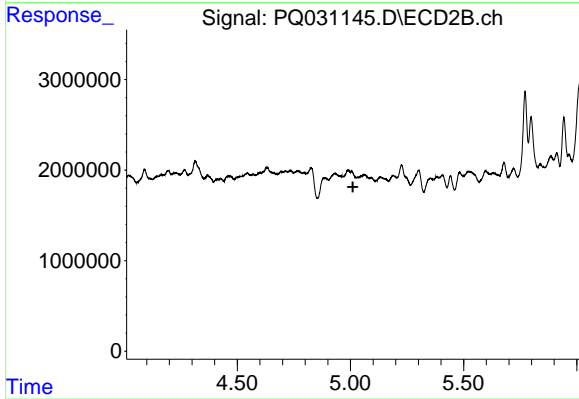
#4 AR-1016-2

R.T.: 4.932 min
 Delta R.T.: -0.059 min
 Response: 5511260
 Conc: 75.79 ng/ml



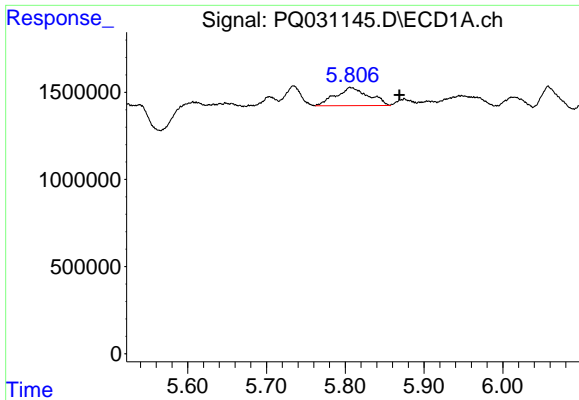
#5 AR-1016-3

R.T.: 5.806 min
 Delta R.T.: 0.023 min
 Response: 3010118
 Conc: 42.21 ng/ml



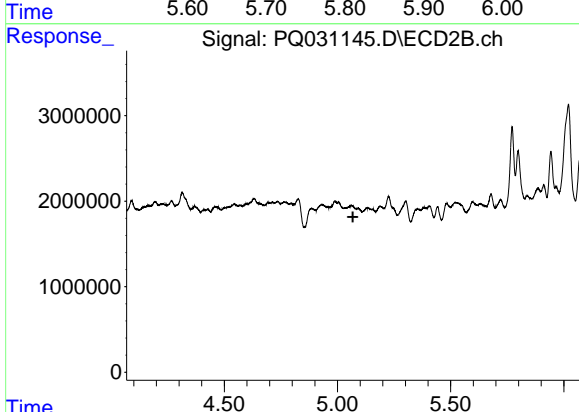
#5 AR-1016-3

R.T.: 0.000 min
 Exp R.T. : 5.011 min
 Response: 0
 Conc: N.D.

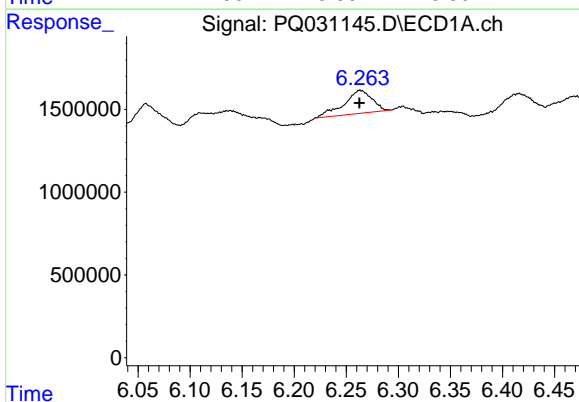


#6 AR-1016-4
 R.T.: 5.806 min
 Delta R.T.: -0.063 min
 Response: 3010118
 Conc: 44.74 ng/ml

Instrument :
 ECD_Q
 ClientSampleId :



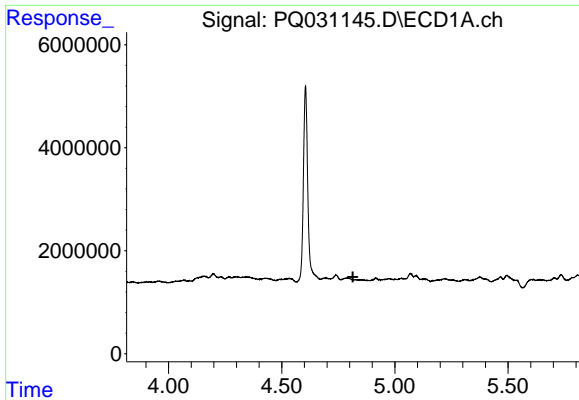
#6 AR-1016-4
 R.T.: 0.000 min
 Exp R.T. : 5.068 min
 Response: 0
 Conc: N.D.



#7 AR-1016-5
 R.T.: 6.263 min
 Delta R.T.: 0.000 min
 Response: 2608577
 Conc: 45.89 ng/ml

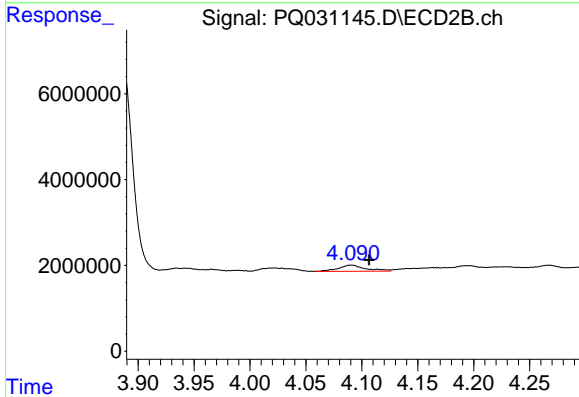


#7 AR-1016-5
 R.T.: 5.442 min
 Delta R.T.: -0.004 min
 Response: 1674045
 Conc: 26.22 ng/ml

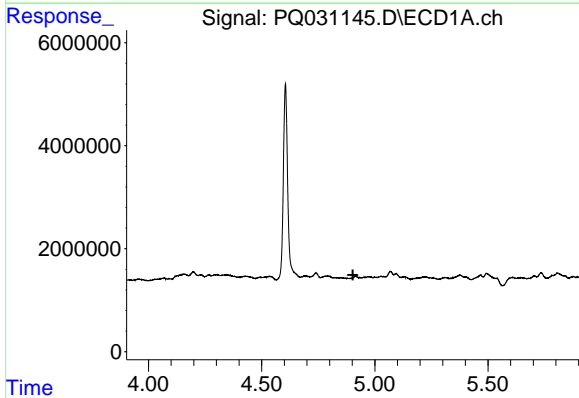


#8 AR-1221-1
 R.T.: 0.000 min
 Exp R.T. : 4.815 min
 Response: 0
 Conc: N.D.

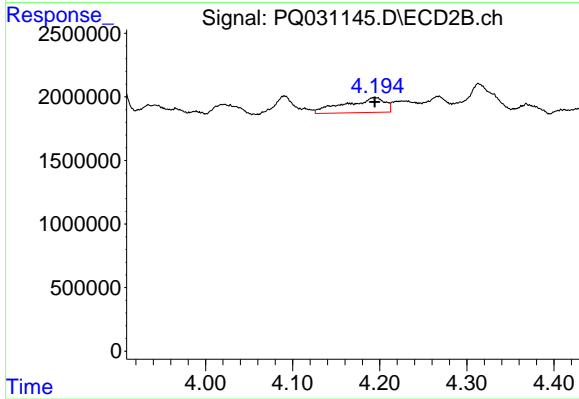
Instrument :
 ECD_Q
 ClientSampleId :



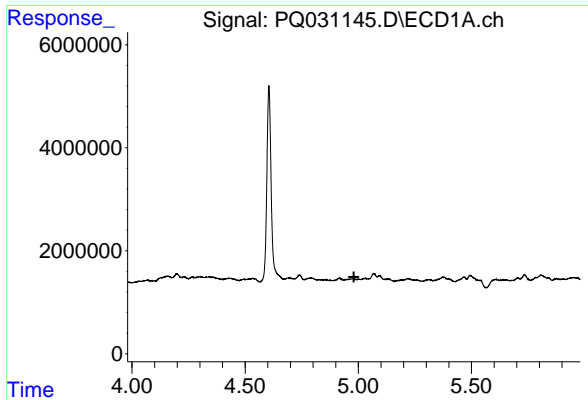
#8 AR-1221-1
 R.T.: 4.091 min
 Delta R.T.: -0.016 min
 Response: 2402349
 Conc: 103.07 ng/ml



#9 AR-1221-2
 R.T.: 0.000 min
 Exp R.T. : 4.903 min
 Response: 0
 Conc: N.D.



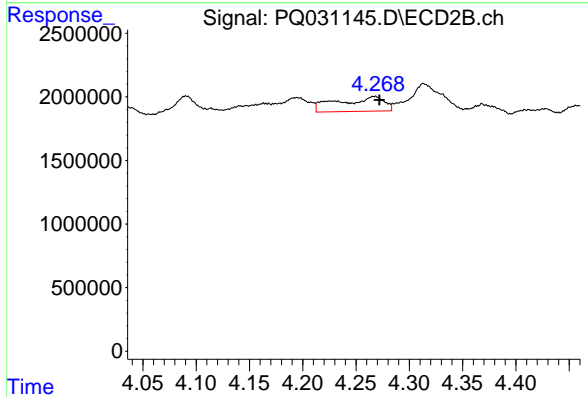
#9 AR-1221-2
 R.T.: 4.195 min
 Delta R.T.: 0.000 min
 Response: 3749298
 Conc: 209.70 ng/ml



#10 AR-1221-3

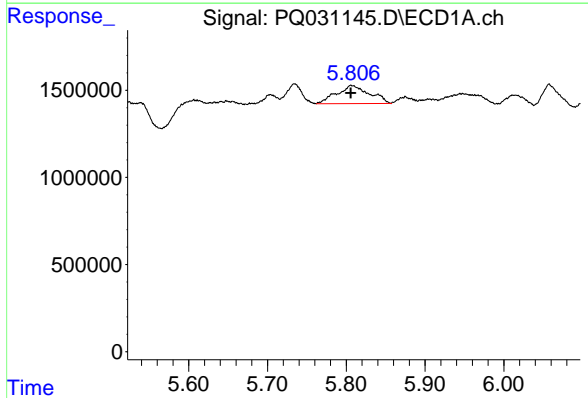
R.T.: 0.000 min
 Exp R.T.: 4.980 min
 Response: 0
 Conc: N.D.

Instrument :
 ECD_Q
 ClientSampleId :



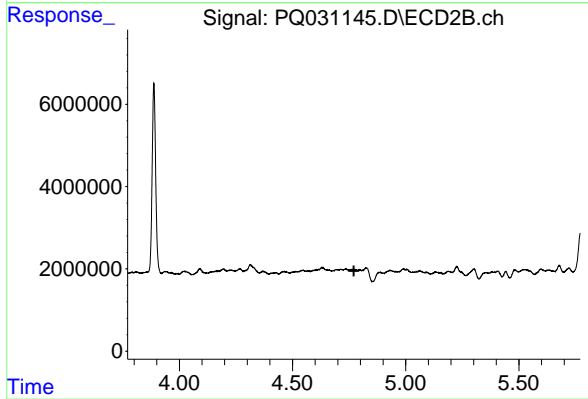
#10 AR-1221-3

R.T.: 4.267 min
 Delta R.T.: -0.005 min
 Response: 3427345
 Conc: 54.62 ng/ml



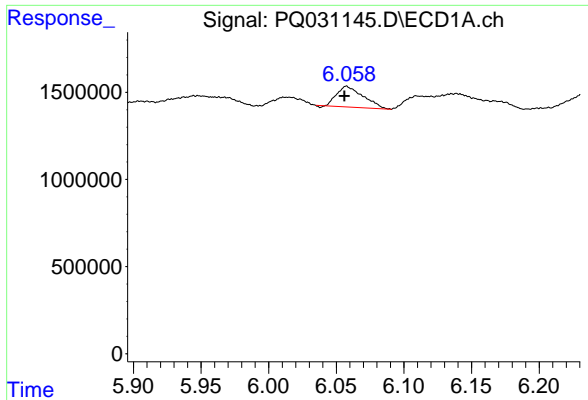
#11 AR-1232-1

R.T.: 5.806 min
 Delta R.T.: 0.000 min
 Response: 3010118
 Conc: 66.81 ng/ml



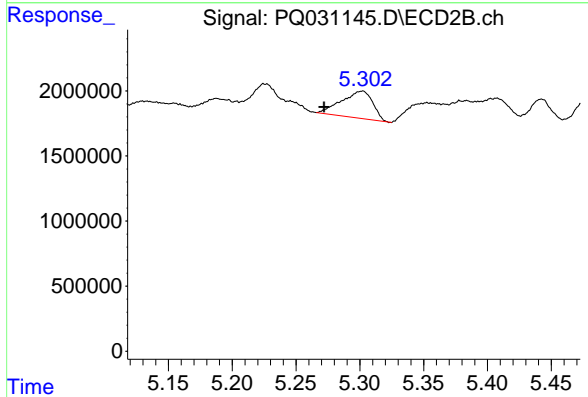
#11 AR-1232-1

R.T.: 0.000 min
 Exp R.T.: 4.771 min
 Response: 0
 Conc: N.D.

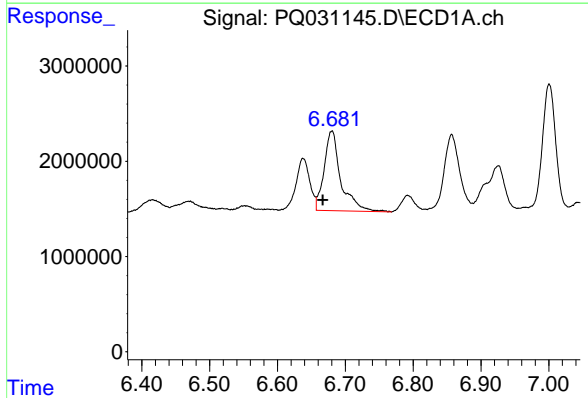


#13 AR-1232-3
 R.T.: 6.058 min
 Delta R.T.: 0.002 min
 Response: 1604071
 Conc: 110.28 ng/ml

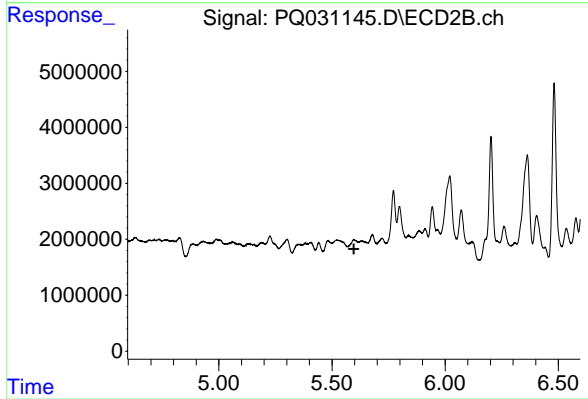
Instrument :
 ECD_Q
 ClientSampleId :



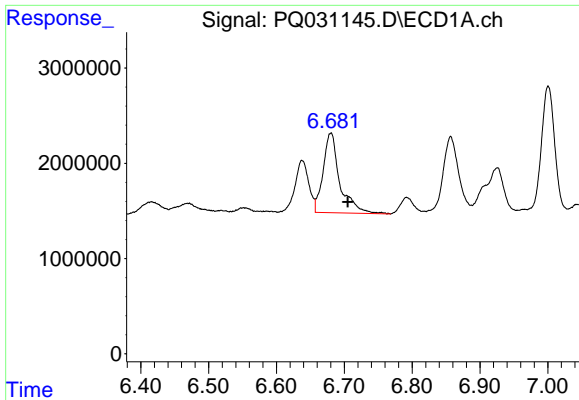
#13 AR-1232-3
 R.T.: 5.302 min
 Delta R.T.: 0.030 min
 Response: 3532624
 Conc: 204.18 ng/ml



#14 AR-1232-4
 R.T.: 6.680 min
 Delta R.T.: 0.013 min
 Response: 14376169
 Conc: 452.64 ng/ml



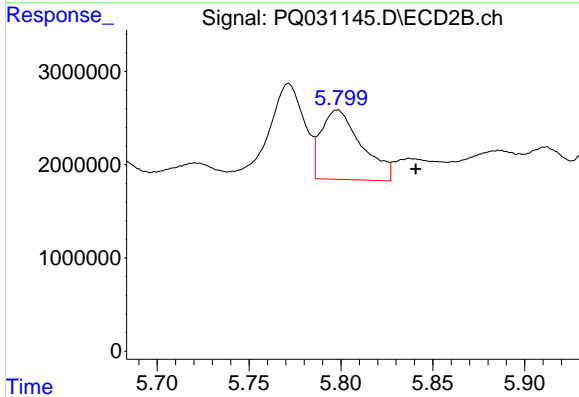
#14 AR-1232-4
 R.T.: 0.000 min
 Exp R.T. : 5.597 min
 Response: 0
 Conc: N.D.



#15 AR-1232-5

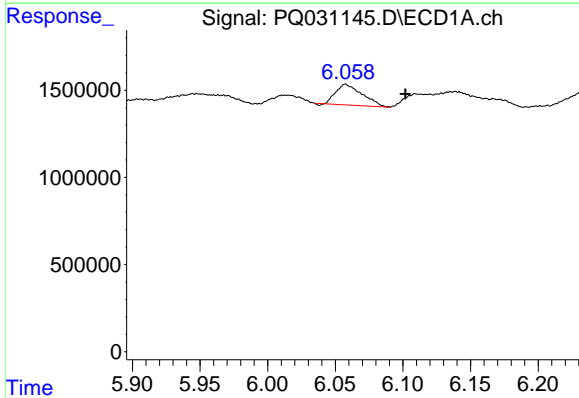
R.T.: 6.680 min
 Delta R.T.: -0.025 min
 Response: 14376169
 Conc: 492.91 ng/ml

Instrument :
 ECD_Q
 ClientSampleId :



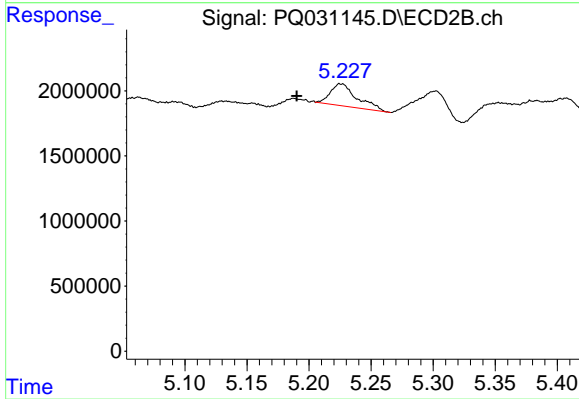
#15 AR-1232-5

R.T.: 5.798 min
 Delta R.T.: -0.043 min
 Response: 11409703
 Conc: 535.95 ng/ml



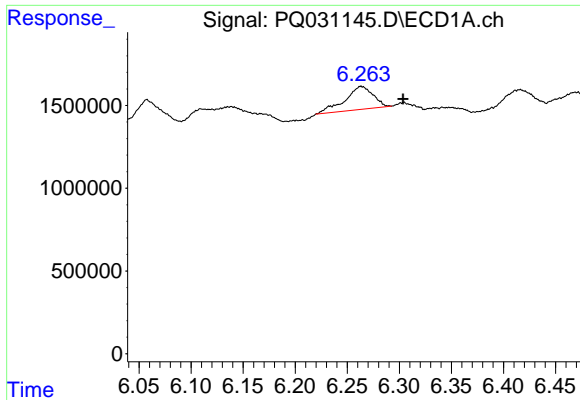
#17 AR-1242-2

R.T.: 6.058 min
 Delta R.T.: -0.044 min
 Response: 1604071
 Conc: 43.33 ng/ml



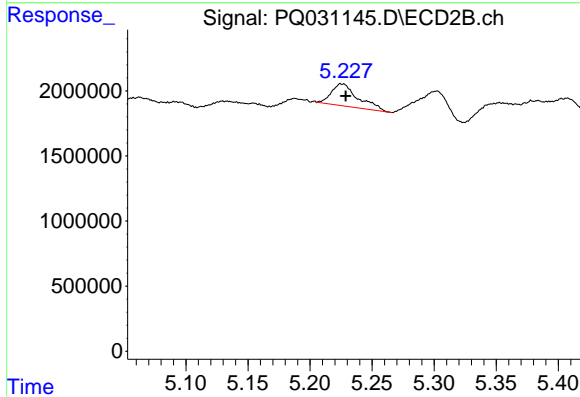
#17 AR-1242-2

R.T.: 5.226 min
 Delta R.T.: 0.036 min
 Response: 2514344
 Conc: 60.16 ng/ml

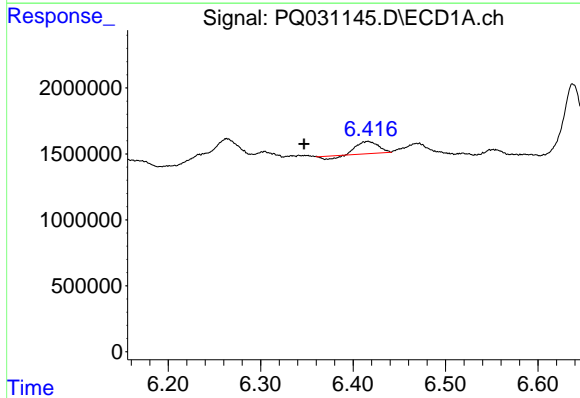


#18 AR-1242-3
 R.T.: 6.263 min
 Delta R.T.: -0.040 min
 Response: 2608577
 Conc: 139.43 ng/ml

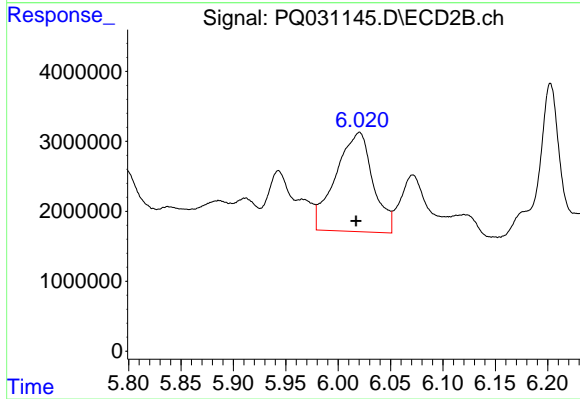
Instrument :
 ECD_Q
 ClientSampleId :



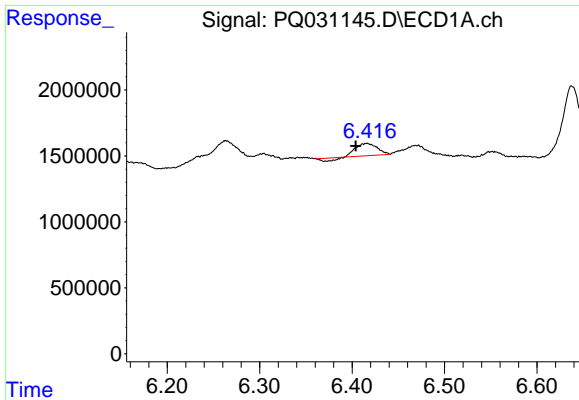
#18 AR-1242-3
 R.T.: 5.226 min
 Delta R.T.: -0.003 min
 Response: 2514344
 Conc: 76.72 ng/ml



#19 AR-1242-4
 R.T.: 6.416 min
 Delta R.T.: 0.069 min
 Response: 1329790
 Conc: 97.09 ng/ml



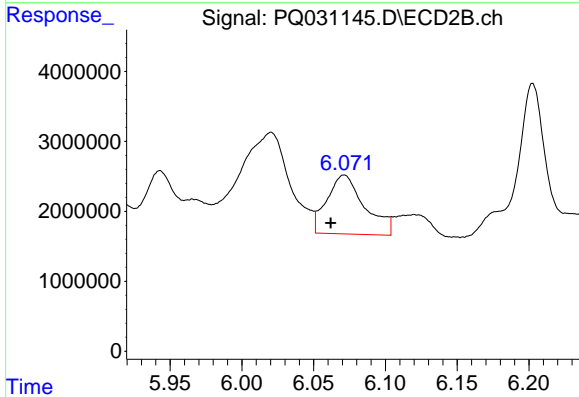
#19 AR-1242-4
 R.T.: 6.020 min
 Delta R.T.: 0.003 min
 Response: 35055798
 Conc: 849.26 ng/ml



#20 AR-1242-5

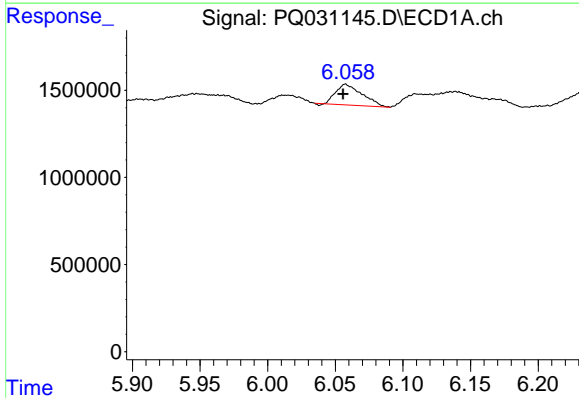
R.T.: 6.416 min
 Delta R.T.: 0.012 min
 Response: 1329790
 Conc: 28.45 ng/ml

Instrument :
 ECD_Q
 ClientSampled :



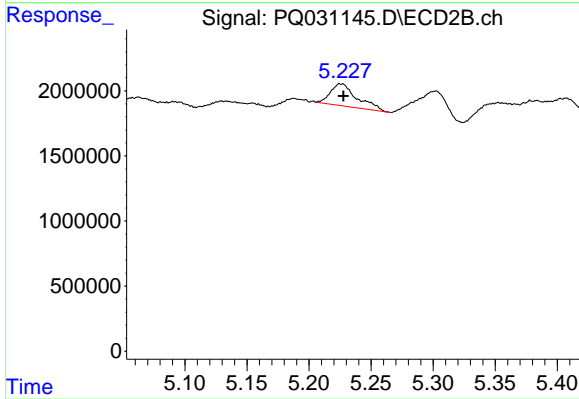
#20 AR-1242-5

R.T.: 6.071 min
 Delta R.T.: 0.009 min
 Response: 15437033
 Conc: 439.94 ng/ml



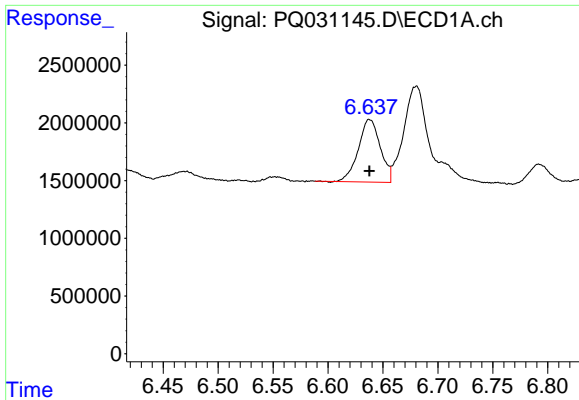
#21 AR-1248-1

R.T.: 6.058 min
 Delta R.T.: 0.002 min
 Response: 1604071
 Conc: 24.78 ng/ml



#21 AR-1248-1

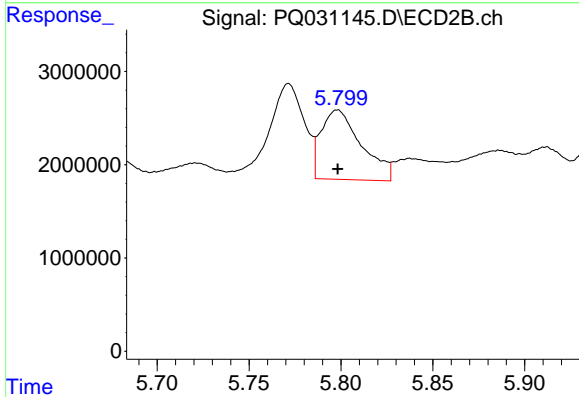
R.T.: 5.226 min
 Delta R.T.: -0.002 min
 Response: 2514344
 Conc: 37.13 ng/ml



#22 AR-1248-2

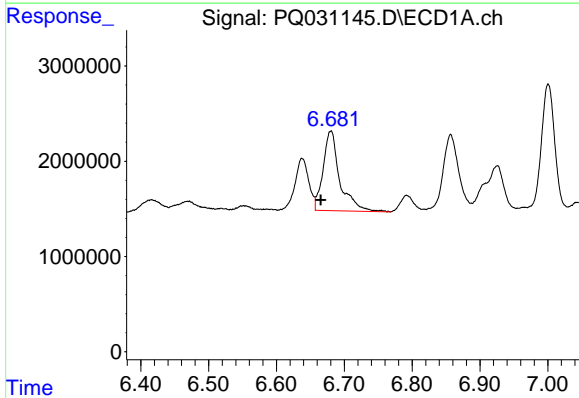
R.T.: 6.638 min
 Delta R.T.: 0.000 min
 Response: 7535557
 Conc: 108.11 ng/ml

Instrument :
 ECD_Q
 ClientSampleId :



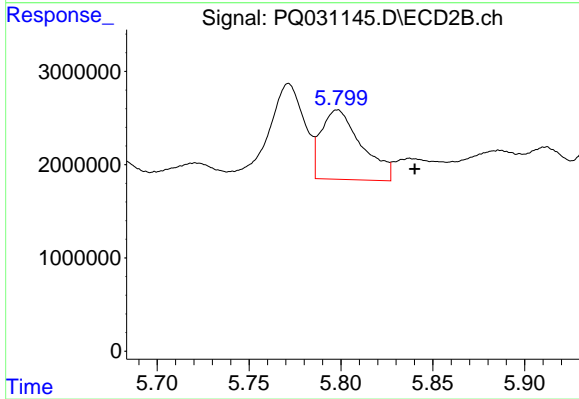
#22 AR-1248-2

R.T.: 5.798 min
 Delta R.T.: 0.000 min
 Response: 11409703
 Conc: 83.63 ng/ml



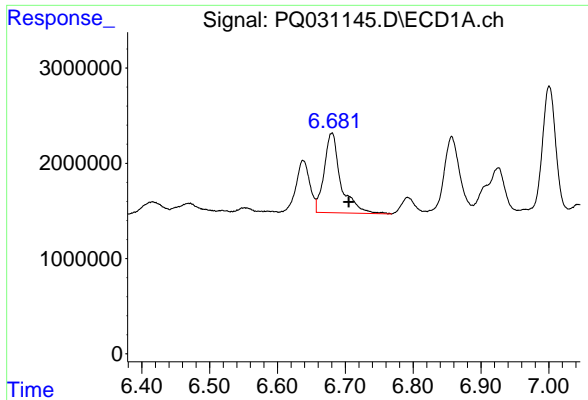
#23 AR-1248-3

R.T.: 6.680 min
 Delta R.T.: 0.015 min
 Response: 14376169
 Conc: 158.25 ng/ml



#23 AR-1248-3

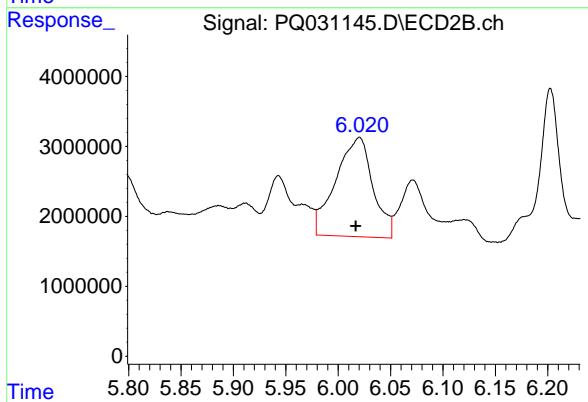
R.T.: 5.798 min
 Delta R.T.: -0.042 min
 Response: 11409703
 Conc: 123.20 ng/ml



#24 AR-1248-4

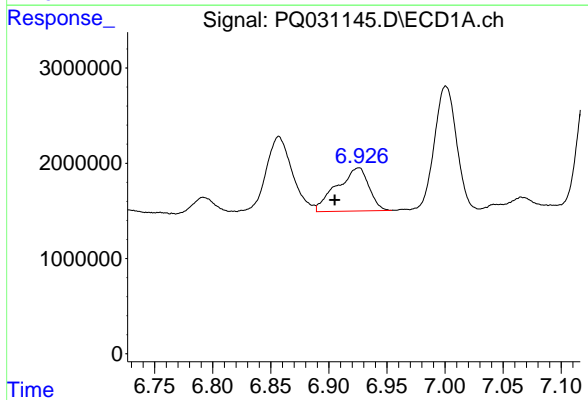
R.T.: 6.680 min
 Delta R.T.: -0.025 min
 Response: 14376169
 Conc: 165.04 ng/ml

Instrument :
 ECD_Q
 ClientSampled :



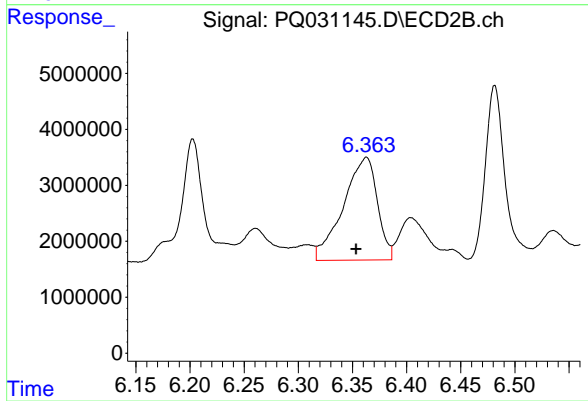
#24 AR-1248-4

R.T.: 6.020 min
 Delta R.T.: 0.003 min
 Response: 35055798
 Conc: 439.39 ng/ml



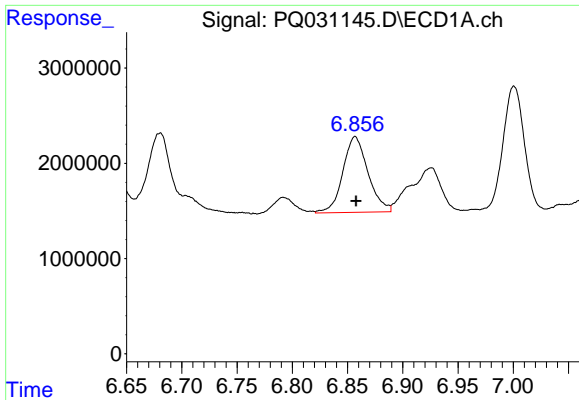
#25 AR-1248-5

R.T.: 6.926 min
 Delta R.T.: 0.021 min
 Response: 8687338
 Conc: 150.84 ng/ml



#25 AR-1248-5

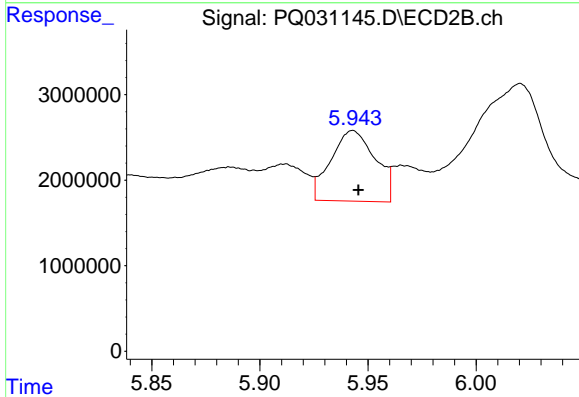
R.T.: 6.363 min
 Delta R.T.: 0.010 min
 Response: 40214446
 Conc: 556.94 ng/ml



#26 AR-1254-1

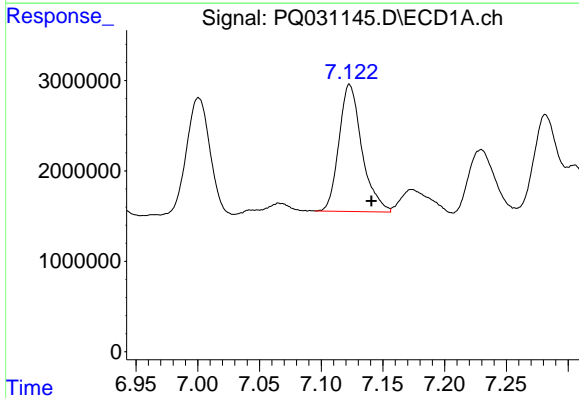
R.T.: 6.857 min
 Delta R.T.: 0.000 min
 Response: 12619801
 Conc: 78.93 ng/ml

Instrument :
 ECD_Q
 ClientSampleId :



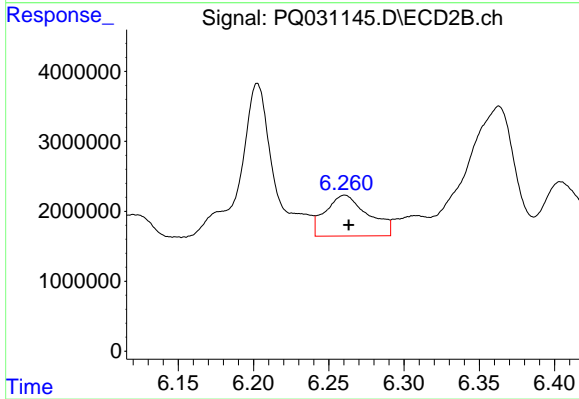
#26 AR-1254-1

R.T.: 5.943 min
 Delta R.T.: -0.003 min
 Response: 11819704
 Conc: 83.42 ng/ml



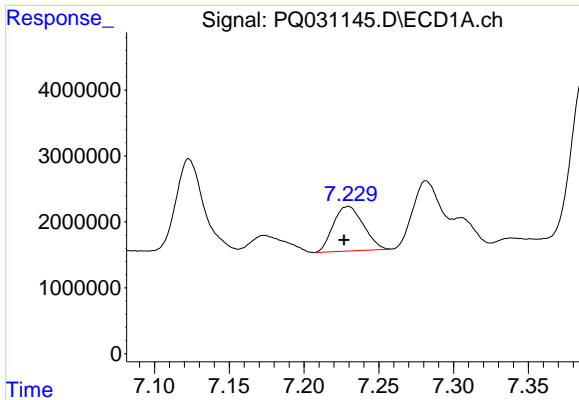
#27 AR-1254-2

R.T.: 7.123 min
 Delta R.T.: -0.018 min
 Response: 18173414
 Conc: 184.71 ng/ml



#27 AR-1254-2

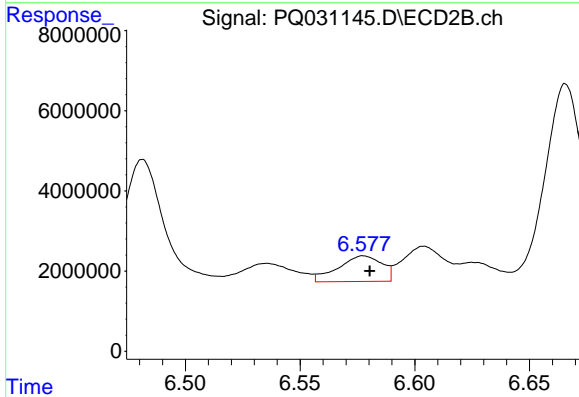
R.T.: 6.261 min
 Delta R.T.: -0.003 min
 Response: 11535342
 Conc: 96.47 ng/ml



#28 AR-1254-3

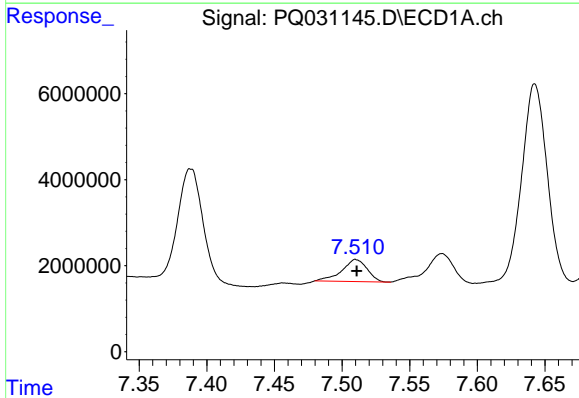
R.T.: 7.230 min
 Delta R.T.: 0.003 min
 Response: 9499820
 Conc: 53.13 ng/ml

Instrument :
 ECD_Q
 ClientSampleId :



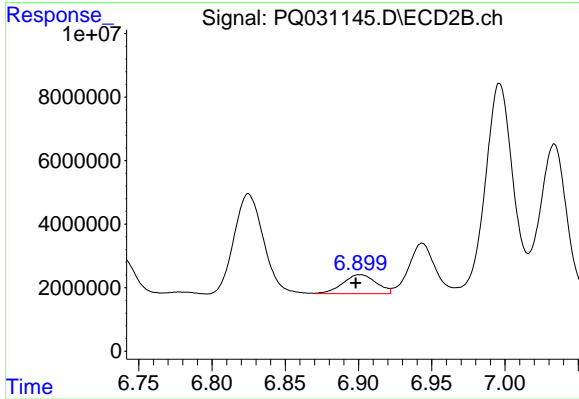
#28 AR-1254-3

R.T.: 6.578 min
 Delta R.T.: -0.003 min
 Response: 8510217
 Conc: 47.87 ng/ml



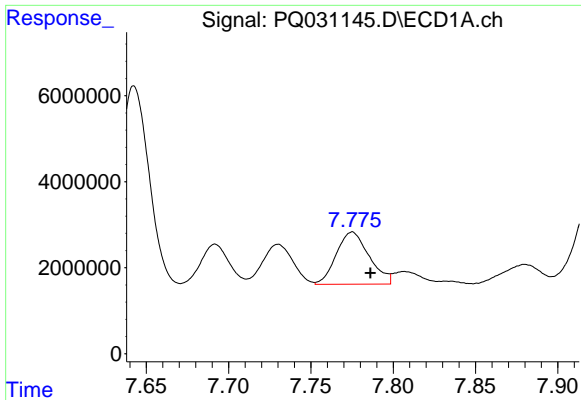
#29 AR-1254-4

R.T.: 7.510 min
 Delta R.T.: 0.000 min
 Response: 6641265
 Conc: 50.81 ng/ml



#29 AR-1254-4

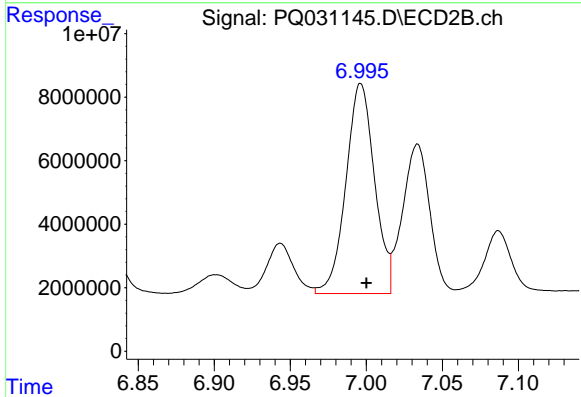
R.T.: 6.901 min
 Delta R.T.: 0.003 min
 Response: 9445416
 Conc: 88.11 ng/ml



#30 AR-1254-5

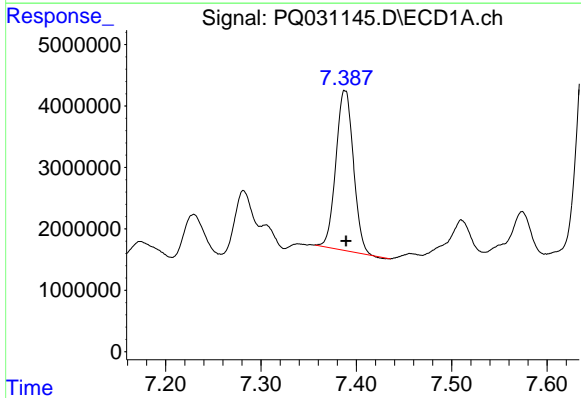
R.T.: 7.775 min
 Delta R.T.: -0.011 min
 Response: 16896261
 Conc: 168.49 ng/ml

Instrument :
 ECD_Q
 ClientSampled :



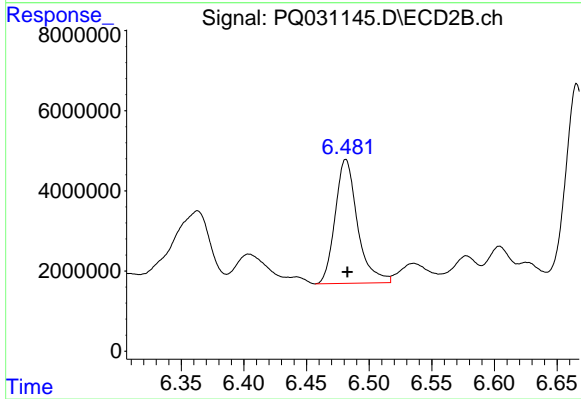
#30 AR-1254-5

R.T.: 6.996 min
 Delta R.T.: -0.004 min
 Response: 86637757
 Conc: 392.71 ng/ml



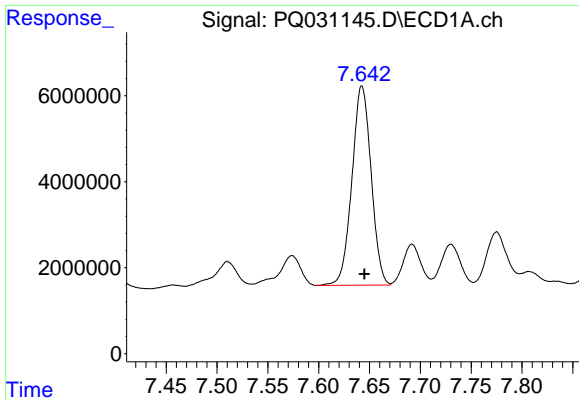
#31 AR-1260-1

R.T.: 7.388 min
 Delta R.T.: -0.001 min
 Response: 33185000
 Conc: 264.93 ng/ml



#31 AR-1260-1

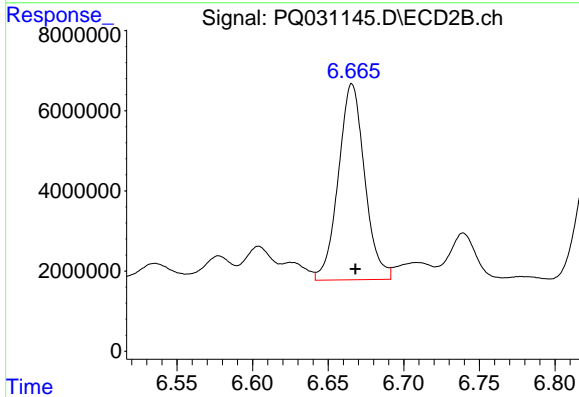
R.T.: 6.481 min
 Delta R.T.: -0.001 min
 Response: 38430353
 Conc: 258.40 ng/ml



#32 AR-1260-2

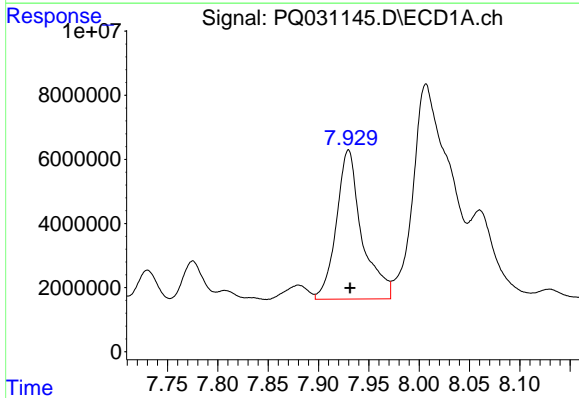
R.T.: 7.642 min
 Delta R.T.: -0.003 min
 Response: 60902914
 Conc: 403.44 ng/ml

Instrument :
 ECD_Q
 ClientSampled :



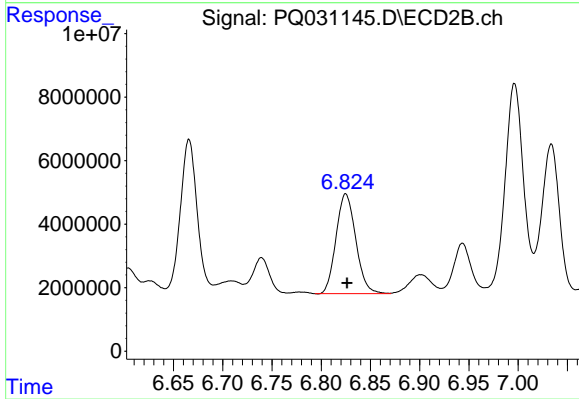
#32 AR-1260-2

R.T.: 6.666 min
 Delta R.T.: -0.002 min
 Response: 59220993
 Conc: 332.30 ng/ml



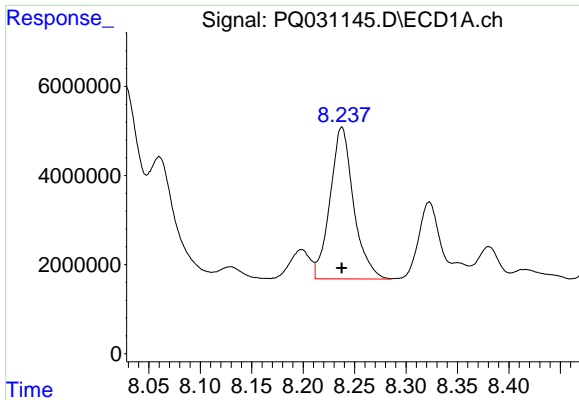
#33 AR-1260-3

R.T.: 7.930 min
 Delta R.T.: -0.002 min
 Response: 82012735
 Conc: 456.51 ng/ml



#33 AR-1260-3

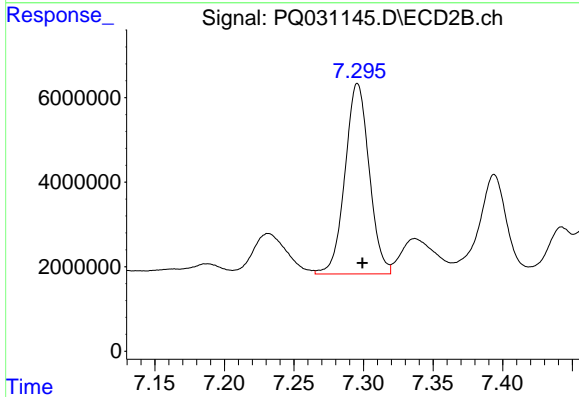
R.T.: 6.825 min
 Delta R.T.: -0.001 min
 Response: 43871692
 Conc: 255.21 ng/ml



#34 AR-1260-4

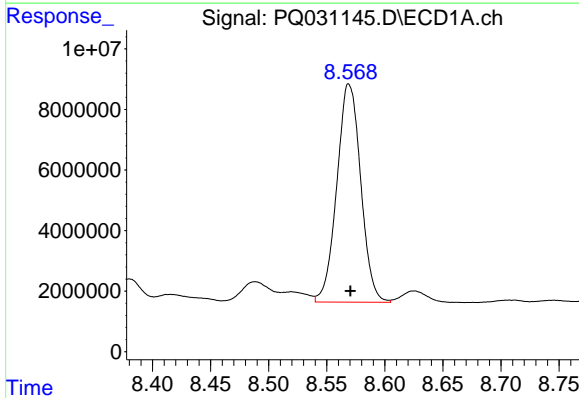
R.T.: 8.238 min
 Delta R.T.: 0.000 min
 Response: 54180192
 Conc: 419.84 ng/ml

Instrument :
 ECD_Q
 ClientSampleId :



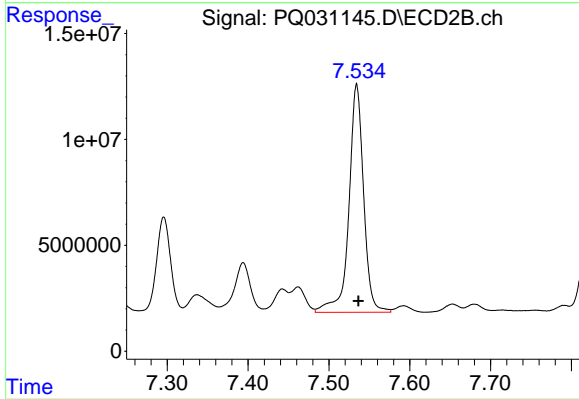
#34 AR-1260-4

R.T.: 7.296 min
 Delta R.T.: -0.004 min
 Response: 54539844
 Conc: 394.37 ng/ml



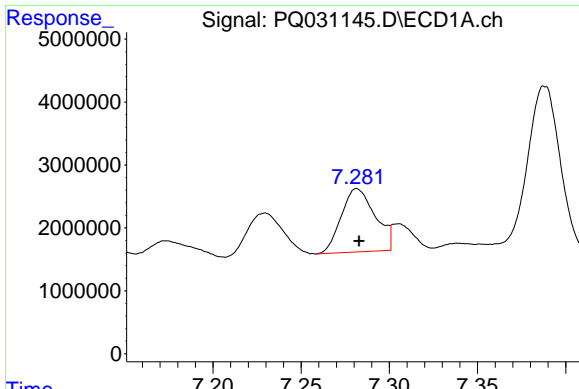
#35 AR-1260-5

R.T.: 8.569 min
 Delta R.T.: -0.001 min
 Response: 103278437
 Conc: 400.98 ng/ml



#35 AR-1260-5

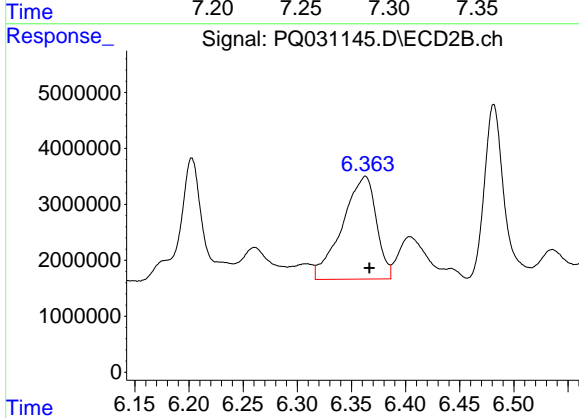
R.T.: 7.534 min
 Delta R.T.: -0.002 min
 Response: 136048778
 Conc: 425.34 ng/ml



#36 AR-1262-1

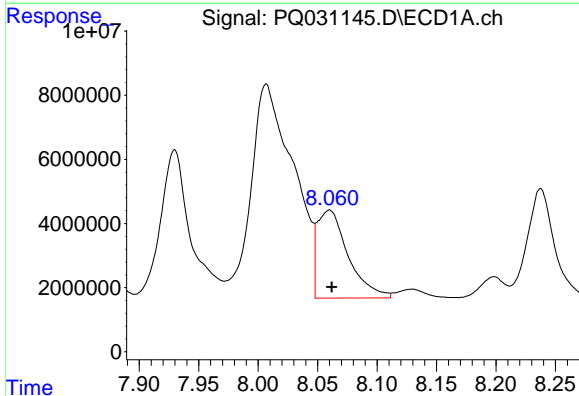
R.T.: 7.282 min
 Delta R.T.: -0.001 min
 Response: 13428549
 Conc: 168.74 ng/ml

Instrument :
 ECD_Q
 ClientSampled :



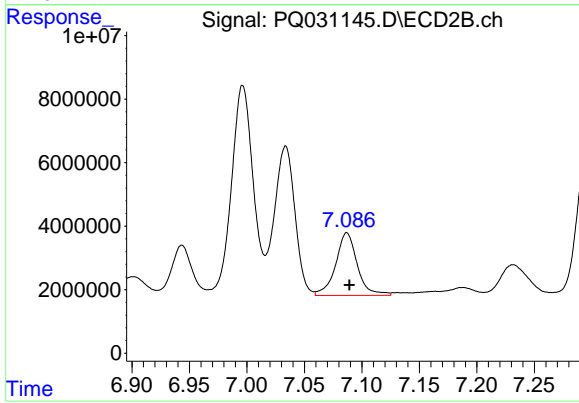
#36 AR-1262-1

R.T.: 6.363 min
 Delta R.T.: -0.004 min
 Response: 40214446
 Conc: 337.25 ng/ml



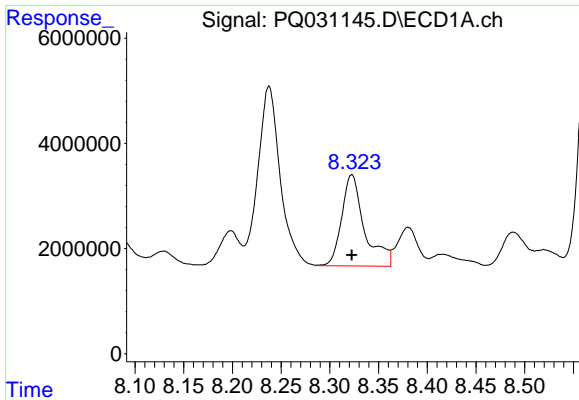
#37 AR-1262-2

R.T.: 8.060 min
 Delta R.T.: -0.002 min
 Response: 49663609
 Conc: 674.74 ng/ml



#37 AR-1262-2

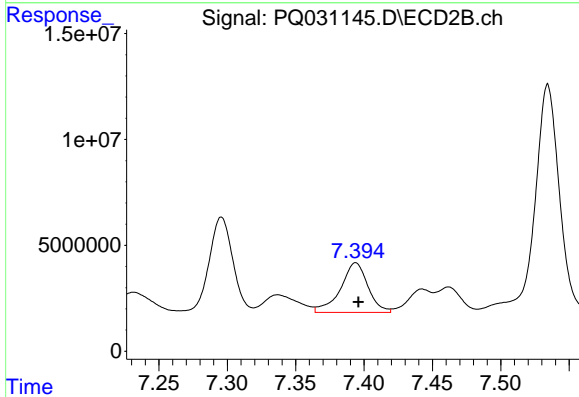
R.T.: 7.087 min
 Delta R.T.: -0.002 min
 Response: 25813262
 Conc: 269.30 ng/ml



#38 AR-1262-3

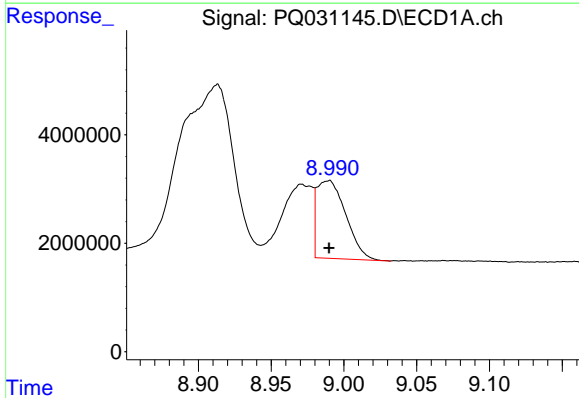
R.T.: 8.323 min
 Delta R.T.: 0.000 min
 Response: 28275706
 Conc: 320.44 ng/ml

Instrument :
 ECD_Q
 ClientSampled :



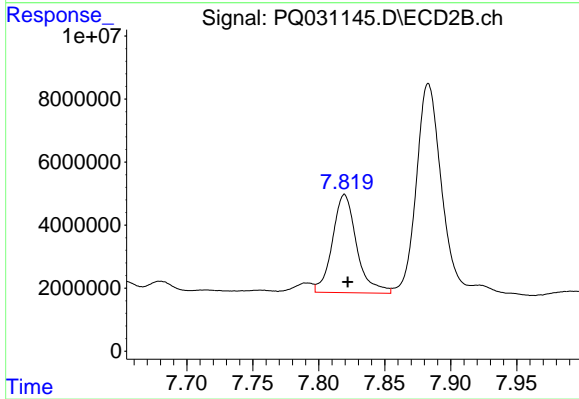
#38 AR-1262-3

R.T.: 7.394 min
 Delta R.T.: -0.002 min
 Response: 32798723
 Conc: 340.71 ng/ml



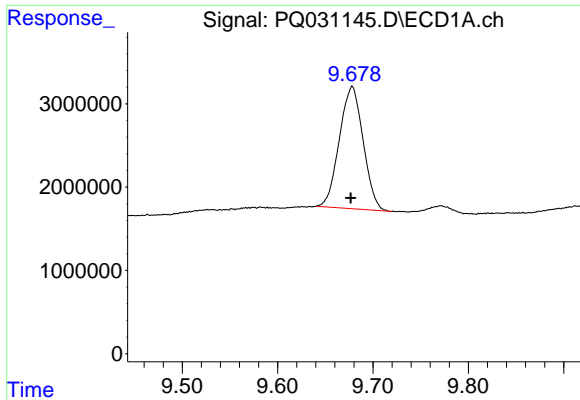
#39 AR-1262-4

R.T.: 8.990 min
 Delta R.T.: 0.000 min
 Response: 19914449
 Conc: 131.82 ng/ml



#39 AR-1262-4

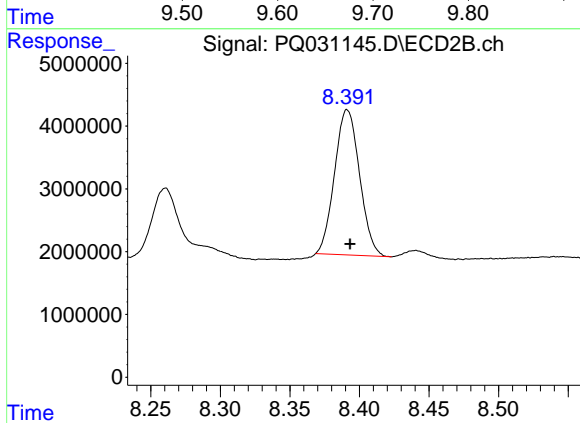
R.T.: 7.819 min
 Delta R.T.: -0.002 min
 Response: 39715965
 Conc: 234.59 ng/ml



#40 AR-1262-5

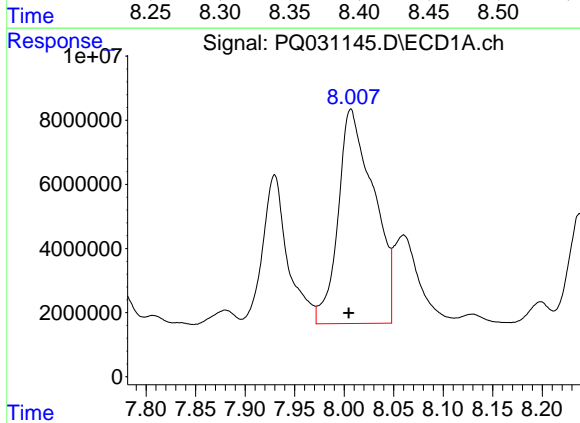
R.T.: 9.678 min
 Delta R.T.: 0.002 min
 Response: 25368239
 Conc: 254.41 ng/ml

Instrument :
 ECD_Q
 ClientSampled :



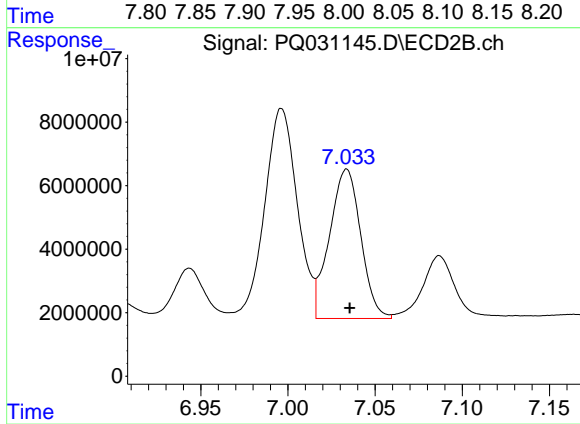
#40 AR-1262-5

R.T.: 8.391 min
 Delta R.T.: -0.002 min
 Response: 28909731
 Conc: 252.77 ng/ml



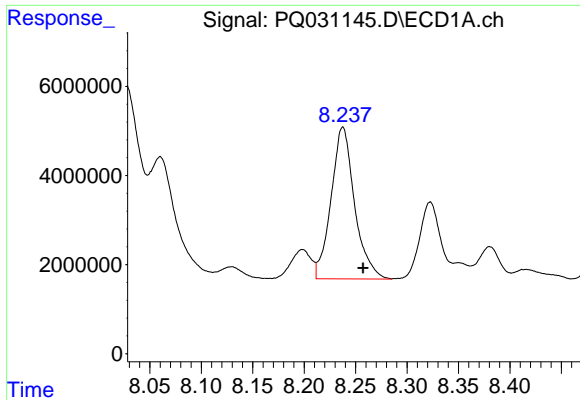
#41 AR-1268-1

R.T.: 8.007 min
 Delta R.T.: 0.002 min
 Response: 166935819
 Conc: 2277.69 ng/ml



#41 AR-1268-1

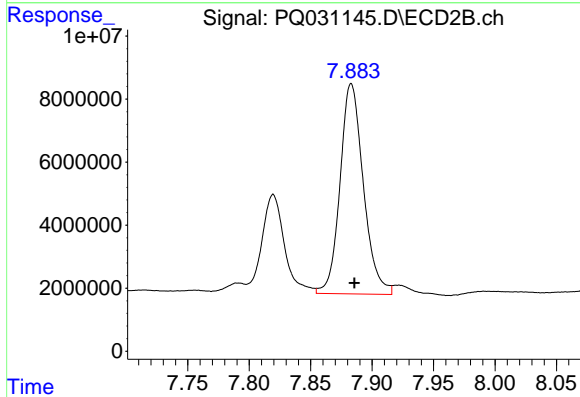
R.T.: 7.034 min
 Delta R.T.: -0.002 min
 Response: 58741553
 Conc: 669.21 ng/ml



#42 AR-1268-2

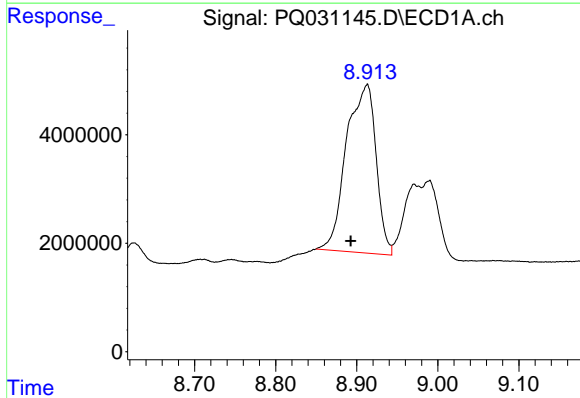
R.T.: 8.238 min
 Delta R.T.: -0.020 min
 Response: 54180192
 Conc: 547.13 ng/ml

Instrument :
 ECD_Q
 ClientSampled :



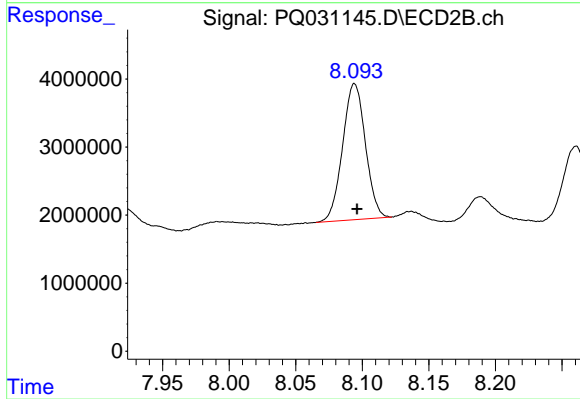
#42 AR-1268-2

R.T.: 7.883 min
 Delta R.T.: -0.003 min
 Response: 88229231
 Conc: 184.51 ng/ml



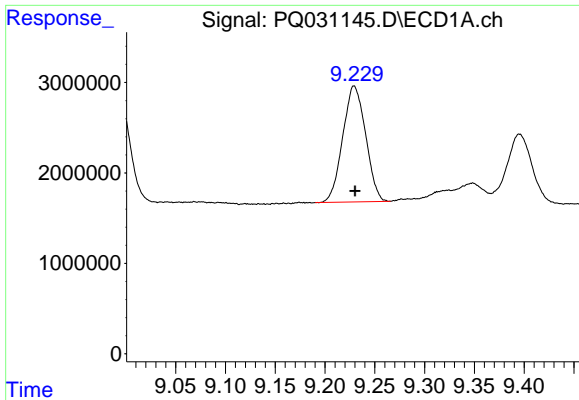
#43 AR-1268-3

R.T.: 8.913 min
 Delta R.T.: 0.020 min
 Response: 78760471
 Conc: 186.54 ng/ml



#43 AR-1268-3

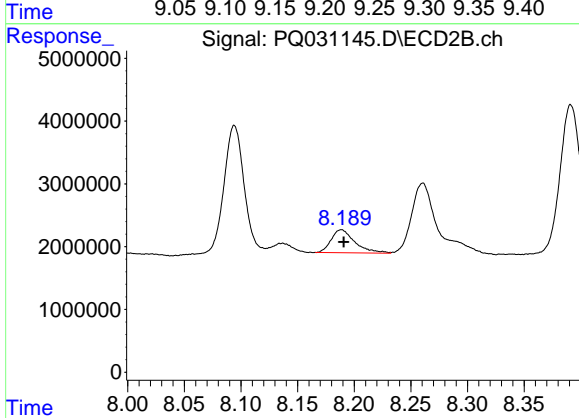
R.T.: 8.094 min
 Delta R.T.: -0.002 min
 Response: 23811390
 Conc: 60.89 ng/ml



#44 AR-1268-4

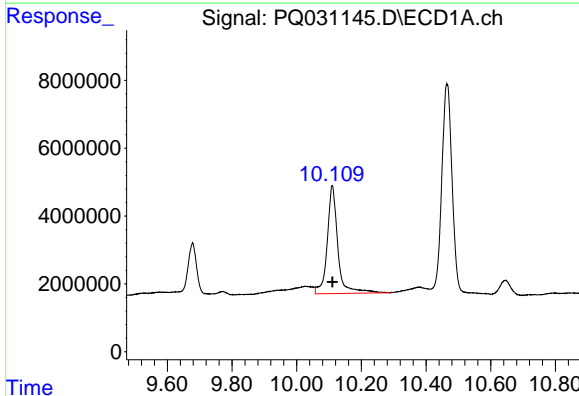
R.T.: 9.229 min
 Delta R.T.: 0.000 min
 Response: 20521150
 Conc: 64.78 ng/ml

Instrument :
 ECD_Q
 ClientSampleId :



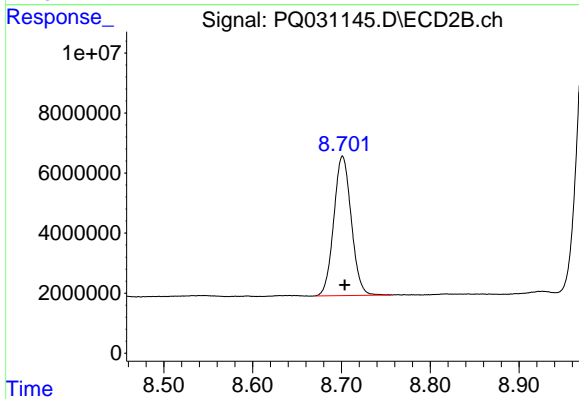
#44 AR-1268-4

R.T.: 8.189 min
 Delta R.T.: -0.002 min
 Response: 5341298
 Conc: 54.68 ng/ml



#45 AR-1268-5

R.T.: 10.110 min
 Delta R.T.: -0.001 min
 Response: 72406546
 Conc: 80.90 ng/ml



#45 AR-1268-5

R.T.: 8.701 min
 Delta R.T.: -0.003 min
 Response: 63483845
 Conc: 58.24 ng/ml