

Data Path : Z:\pestpcbsrv\HPCHEM1\ECD_Q\Data\PQ081523\
 Data File : PQ063075.D
 Signal(s) : Signal #1: ECD1A.ch Signal #2: ECD2B.ch
 Acq On : 15 Aug 2023 20:55
 Operator : YP\AJ
 Sample : AR1262ICC200
 Misc :
 ALS Vial : 34 Sample Multiplier: 1

Instrument :
 ECD_Q
 ClientSampleId :

Integration File signal 1: autoint1.e
 Integration File signal 2: autoint2.e
 Quant Time: Aug 16 02:44:54 2023
 Quant Method : Z:\pestpcbsrv\HPCHEM1\ECD_Q\Method\PQ081523CLP.M
 Quant Title : GC EXTRACTABLES
 QLast Update : Wed Aug 16 02:32:13 2023
 Response via : Initial Calibration
 Integrator: ChemStation

Volume Inj. : 1 µl
 Signal #1 Phase : ZB MR1 Signal #2 Phase: ZB MR2
 Signal #1 Info : 30Mx0.32mmx 0.5µm Signal #2 Info : 30M x 0.32mm x 0.25µm

Compound	RT#1	RT#2	Resp#1	Resp#2	ng/ml	ng/ml

System Monitoring Compounds						
1) SA Tetrachlo...	3.454	2.784	66059784	52473779	10.686	11.373
2) SA Decachlor...	8.687	7.592	108.2E6	107.7E6	22.577	22.685
Target Compounds						
36) L8 AR-1262-1	6.753	5.771	85935427	82851118	221.810	227.033
37) L8 AR-1262-2	7.284	6.266	148.5E6	144.9E6	220.449	219.704
38) L8 AR-1262-3	7.561	6.547	99744939	60991489	223.509	227.937
39) L8 AR-1262-4	7.635	6.608	76852989	109.7E6	224.535	221.959
40) L8 AR-1262-5	8.144	7.103	51529792	54517167	224.766	227.487

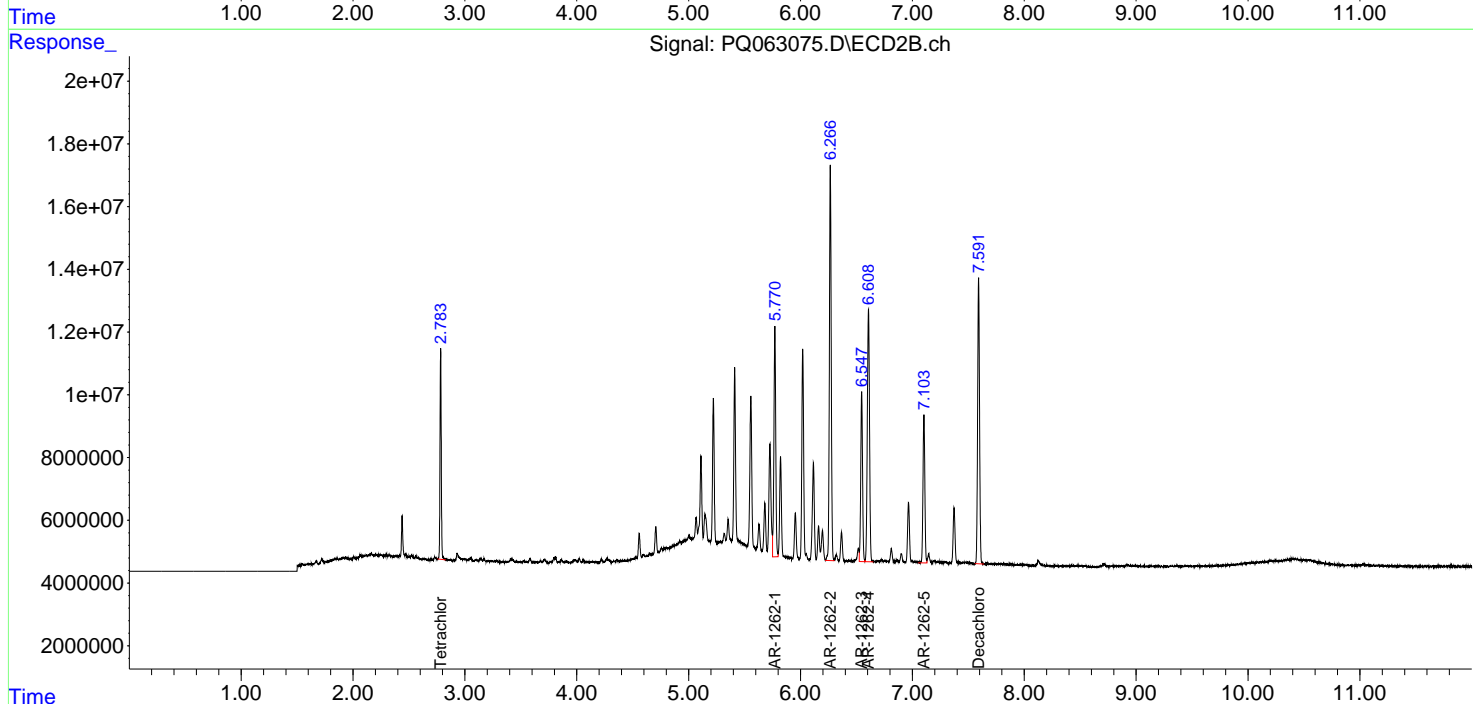
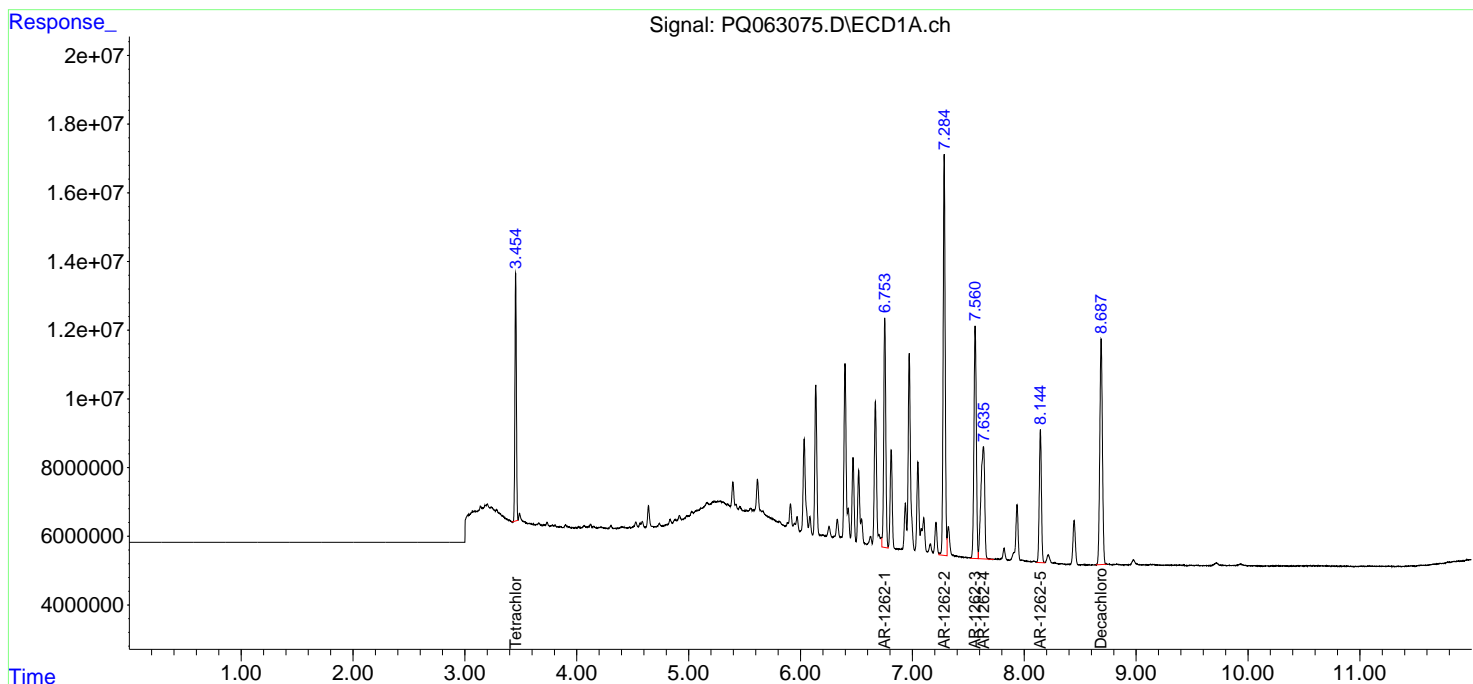
(f)=RT Delta > 1/2 Window (#)=Amounts differ by > 25% (m)=manual int.

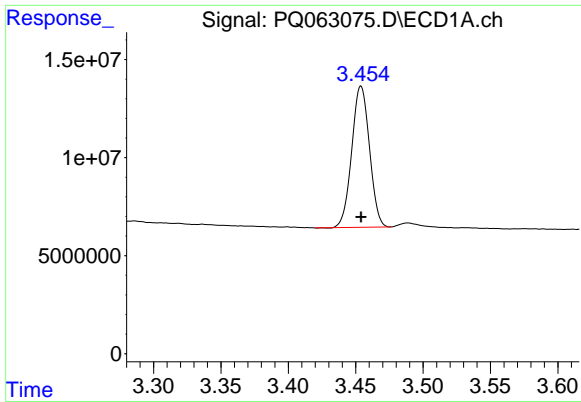
Data Path : Z:\pestpcbsrv\HPCHEM1\ECD_Q\Data\PQ081523\
 Data File : PQ063075.D
 Signal(s) : Signal #1: ECD1A.ch Signal #2: ECD2B.ch
 Acq On : 15 Aug 2023 20:55
 Operator : YP\AJ
 Sample : AR1262ICC200
 Misc :
 ALS Vial : 34 Sample Multiplier: 1

Instrument :
 ECD_Q
 ClientSampleId :

Integration File signal 1: autoint1.e
 Integration File signal 2: autoint2.e
 Quant Time: Aug 16 02:44:54 2023
 Quant Method : Z:\pestpcbsrv\HPCHEM1\ECD_Q\Method\PQ081523CLP.M
 Quant Title : GC EXTRACTABLES
 QLast Update : Wed Aug 16 02:32:13 2023
 Response via : Initial Calibration
 Integrator: ChemStation

Volume Inj. : 1 µl
 Signal #1 Phase : ZB MR1 Signal #2 Phase: ZB MR2
 Signal #1 Info : 30Mx0.32mmx 0.5µm Signal #2 Info : 30M x 0.32mm x 0.25µm

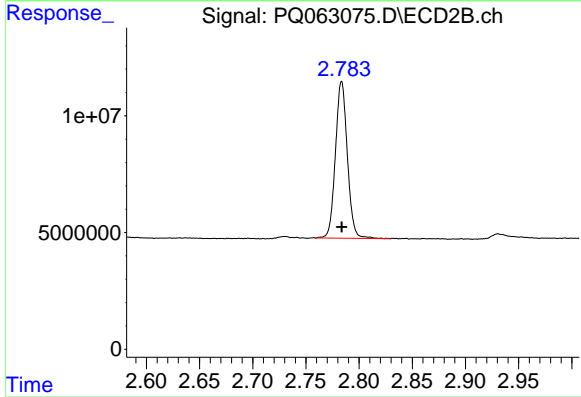




#1 Tetrachloro-m-xylene

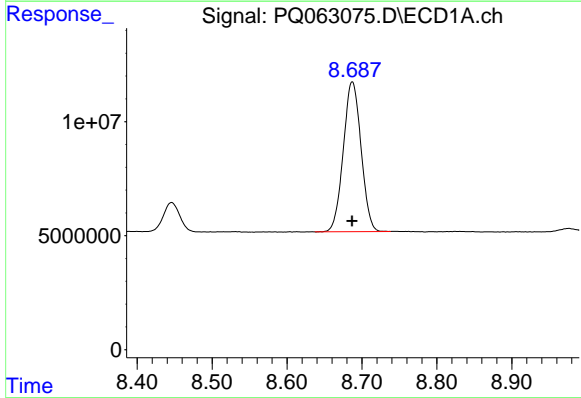
R.T.: 3.454 min
Delta R.T.: 0.000 min
Response: 66059784
Conc: 10.69 ng/ml

Instrument :
ECD_Q
ClientSampleId :



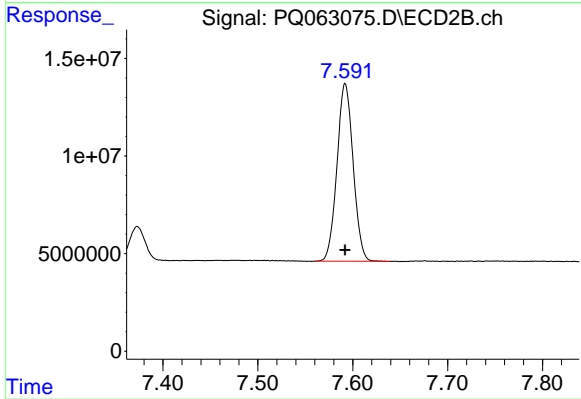
#1 Tetrachloro-m-xylene

R.T.: 2.784 min
Delta R.T.: 0.000 min
Response: 52473779
Conc: 11.37 ng/ml



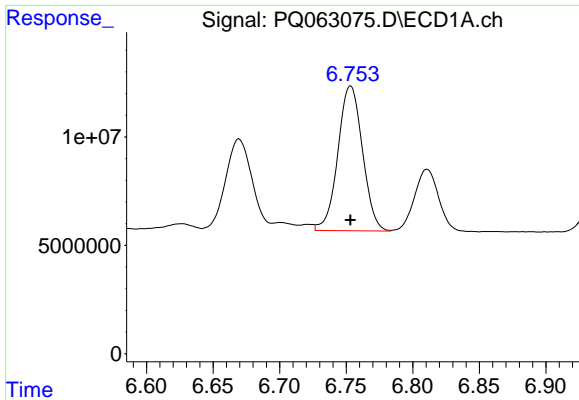
#2 Decachlorobiphenyl

R.T.: 8.687 min
Delta R.T.: 0.000 min
Response: 108170992
Conc: 22.58 ng/ml



#2 Decachlorobiphenyl

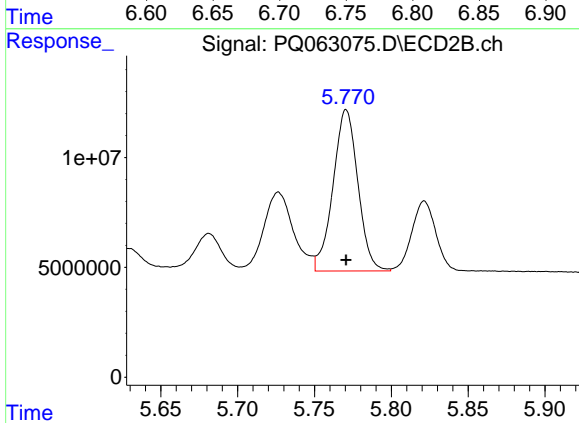
R.T.: 7.592 min
Delta R.T.: 0.000 min
Response: 107676248
Conc: 22.69 ng/ml



#36 AR-1262-1

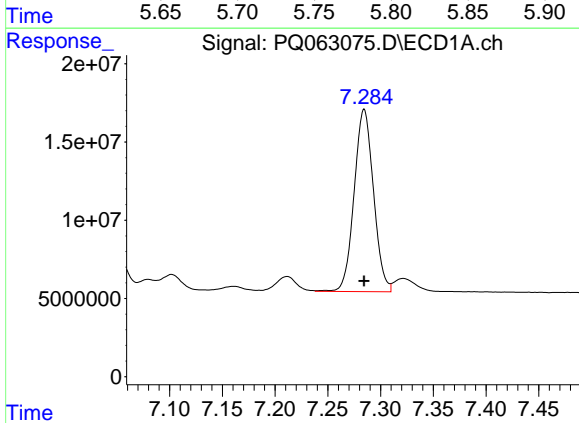
R.T.: 6.753 min
 Delta R.T.: 0.000 min
 Response: 85935427
 Conc: 221.81 ng/ml

Instrument :
 ECD_Q
 ClientSampleId :



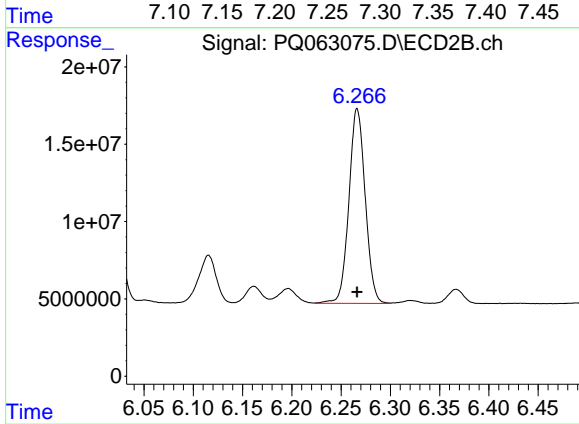
#36 AR-1262-1

R.T.: 5.771 min
 Delta R.T.: 0.000 min
 Response: 82851118
 Conc: 227.03 ng/ml



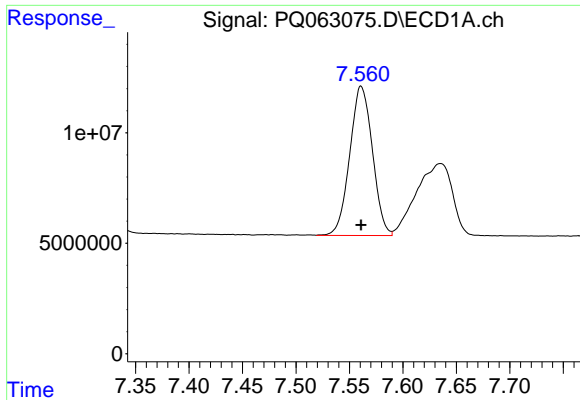
#37 AR-1262-2

R.T.: 7.284 min
 Delta R.T.: 0.000 min
 Response: 148477361
 Conc: 220.45 ng/ml



#37 AR-1262-2

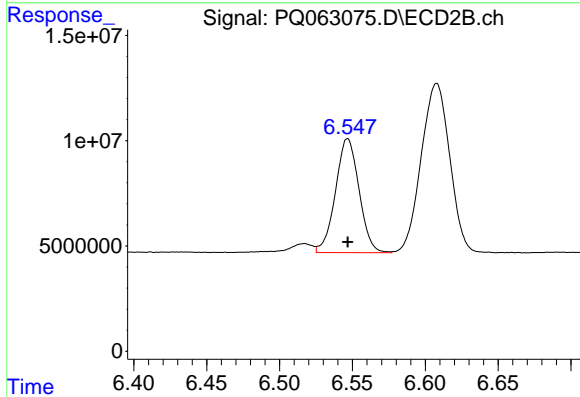
R.T.: 6.266 min
 Delta R.T.: 0.000 min
 Response: 144930102
 Conc: 219.70 ng/ml



#38 AR-1262-3

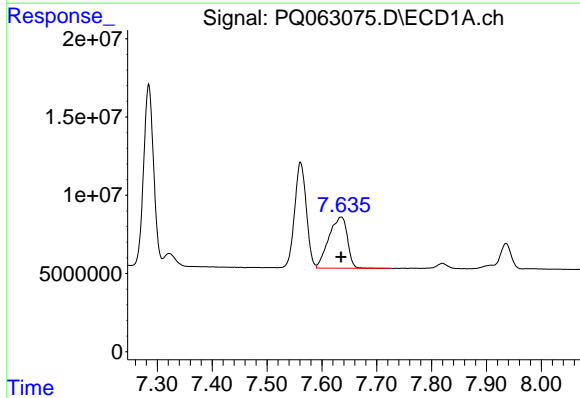
R.T.: 7.561 min
 Delta R.T.: 0.000 min
 Response: 99744939
 Conc: 223.51 ng/ml

Instrument :
 ECD_Q
 ClientSampleId :



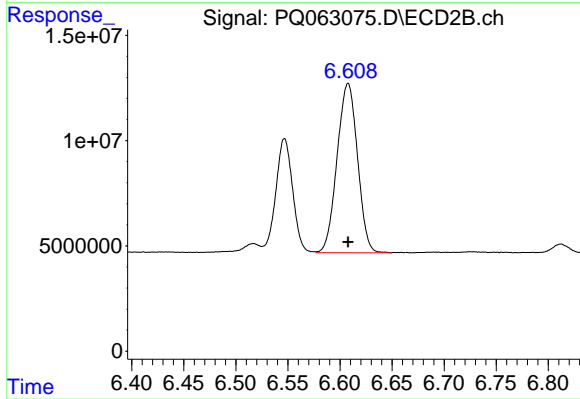
#38 AR-1262-3

R.T.: 6.547 min
 Delta R.T.: 0.000 min
 Response: 60991489
 Conc: 227.94 ng/ml



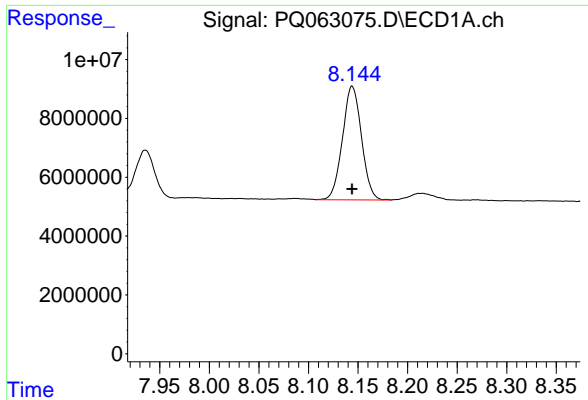
#39 AR-1262-4

R.T.: 7.635 min
 Delta R.T.: 0.000 min
 Response: 76852989
 Conc: 224.53 ng/ml



#39 AR-1262-4

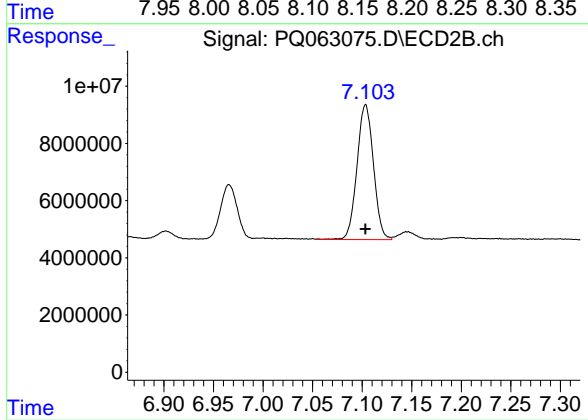
R.T.: 6.608 min
 Delta R.T.: 0.000 min
 Response: 109723543
 Conc: 221.96 ng/ml



#40 AR-1262-5

R.T.: 8.144 min
Delta R.T.: 0.000 min
Response: 51529792
Conc: 224.77 ng/ml

Instrument :
ECD_Q
ClientSampleId :



#40 AR-1262-5

R.T.: 7.103 min
Delta R.T.: 0.000 min
Response: 54517167
Conc: 227.49 ng/ml