

Data Path : Z:\pestpcbsrv\HPCHEM1\ECD_Q\Data\PQ081524\
 Data File : PQ067992.D
 Signal(s) : Signal #1: ECD1A.ch Signal #2: ECD2B.ch
 Acq On : 14 Aug 2024 17:20
 Operator : YP\AJ
 Sample : P3600-06MS
 Misc :
 ALS Vial : 16 Sample Multiplier: 1

Instrument :
 ECD_Q
 ClientSampleId :
 VCPS-B3-081324-10-18MS

Integration File signal 1: autoint1.e
 Integration File signal 2: autoint2.e
 Quant Time: Aug 15 05:03:35 2024
 Quant Method : Z:\pestpcbsrv\HPCHEM1\ECD_Q\Method\PQ080524.M
 Quant Title : GC EXTRACTABLES
 QLast Update : Fri Aug 09 02:37:44 2024
 Response via : Initial Calibration
 Integrator: ChemStation

Volume Inj. : 2 µl
 Signal #1 Phase : ZB-MR1 Signal #2 Phase: ZB-MR2
 Signal #1 Info : 30Mx0.32mmx 0.50µ Signal #2 Info : 30M x 0.32mm x 0.25µm

| Compound | RT#1 | RT#2 | Resp#1 | Resp#2 | ng/ml | ng/ml |
|-----------------------------|-------|-------|----------|----------|----------|-----------|
| System Monitoring Compounds | | | | | | |
| 1) SA Tetrachlo... | 3.459 | 2.825 | 110.2E6 | 98832023 | 18.570 | 15.583 |
| 2) SA Decachlor... | 8.737 | 7.606 | 61440551 | 83782702 | 15.946 | 14.866 |
| Target Compounds | | | | | | |
| 3) L1 AR-1016-1 | 4.573 | 3.833 | 84305119 | 98515597 | 510.048 | 558.935 |
| 4) L1 AR-1016-2 | 4.592 | 3.848 | 138.9E6 | 144.8E6 | 471.644 | 496.682 |
| 5) L1 AR-1016-3 | 4.650 | 4.010 | 85551224 | 79383471 | 448.205 | 504.258 |
| 6) L1 AR-1016-4 | 4.743 | 4.058 | 71957517 | 72576866 | 478.301 | 488.400 |
| 7) L1 AR-1016-5 | 5.035 | 4.254 | 68233018 | 85705084 | 466.824 | 501.008 |
| 8) L2 AR-1221-1 | 3.657 | 3.025 | 11843738 | 13154035 | 158.136 | 177.935 |
| 9) L2 AR-1221-2 | 3.741 | 3.103 | 11368219 | 16794021 | 198.760 | 301.537 # |
| 10) L2 AR-1221-3 | 3.812 | 3.172 | 53550746 | 65729461 | 320.625 | 363.590 |
| 11) L3 AR-1232-1 | 3.812 | 3.172 | 53550746 | 65729461 | 393.043 | 447.341 |
| 12) L3 AR-1232-2 | 4.311 | 3.848 | 81443067 | 144.8E6 | 1126.939 | 1067.586 |
| 13) L3 AR-1232-3 | 4.592 | 4.010 | 138.9E6 | 79383471 | 984.467 | 1048.196 |
| 14) L3 AR-1232-4 | 4.743 | 4.095 | 71957517 | 76522344 | 1025.874 | 1108.706 |
| 15) L3 AR-1232-5 | 4.841 | 4.254 | 54227505 | 85705084 | 1111.967 | 1127.217 |
| 16) L4 AR-1242-1 | 4.573 | 3.833 | 84305119 | 98515597 | 626.389 | 687.251 |
| 17) L4 AR-1242-2 | 4.592 | 3.848 | 138.9E6 | 144.8E6 | 592.997 | 618.050 |
| 18) L4 AR-1242-3 | 4.650 | 4.010 | 85551224 | 79383471 | 570.613 | 614.873 |
| 19) L4 AR-1242-4 | 4.743 | 4.095 | 71957517 | 76522344 | 616.892 | 586.009 |
| 20) L4 AR-1242-5 | 5.471 | 4.593 | 35343314 | 57590773 | 311.371 | 376.838 |
| 21) L5 AR-1248-1 | 4.573 | 3.833 | 84305119 | 98515597 | 807.405 | 866.348 |
| 22) L5 AR-1248-2 | 4.841 | 4.058 | 54227505 | 72576866 | 321.184 | 346.713 |
| 23) L5 AR-1248-3 | 5.035 | 4.095 | 68233018 | 76522344 | 336.333 | 386.612 |
| 24) L5 AR-1248-4 | 5.435 | 4.254 | 22212243 | 85705084 | 116.846 | 363.393 # |
| 25) L5 AR-1248-5 | 5.471 | 4.631 | 35343314 | 19352460 | 176.306 | 100.386 # |
| 26) L6 AR-1254-1 | 5.407 | 4.593 | 70490557 | 57590773 | 316.887 | 171.454 # |
| 27) L6 AR-1254-2 | 5.628 | 4.739 | 55217820 | 75113887 | 171.016 | 244.078 # |
| 28) L6 AR-1254-3 | 5.988 | 5.122 | 26464115 | 36379566 | 80.763 | 81.558 |
| 29) L6 AR-1254-4 | 6.276 | 5.348 | 17323544 | 20940469 | 86.429 | 92.836 |
| 30) L6 AR-1254-5 | 6.697 | 5.754 | 183.9E6 | 194.2E6 | 731.518 | 472.083 # |
| 31) L7 AR-1260-1 | 6.156 | 5.251 | 70422062 | 149.5E6 | 257.027 | 440.003 # |
| 32) L7 AR-1260-2 | 6.421 | 5.441 | 174.4E6 | 160.4E6 | 541.060 | 409.837 |
| 33) L7 AR-1260-3 | 6.782 | 5.583 | 86489176 | 148.5E6 | 377.624 | 395.309 |
| 34) L7 AR-1260-4 | 7.002 | 6.045 | 121.5E6 | 110.3E6 | 476.160 | 381.319 |
| 35) L7 AR-1260-5 | 7.322 | 6.290 | 201.2E6 | 239.7E6 | 454.531 | 402.278 |
| 36) L8 AR-1262-1 | 6.782 | 5.797 | 86489176 | 110.0E6 | 253.773 | 246.245 |
| 37) L8 AR-1262-2 | 7.322 | 6.290 | 201.2E6 | 239.7E6 | 371.859 | 350.403 |
| 38) L8 AR-1262-3 | 7.605 | 6.568 | 123.7E6 | 50565534 | 377.373 | 167.368 # |
| 39) L8 AR-1262-4 | 7.673 | 6.626 | 66231383 | 186.0E6 | 247.668 | 353.479 # |
| 40) L8 AR-1262-5 | 8.199 | 7.121 | 44239695 | 59577692 | 297.692 | 278.215 |
| 41) L9 AR-1268-1 | 7.605 | 6.568 | 123.7E6 | 50565534 | 211.283 | 60.085 # |

Data Path : Z:\pestpcbsrv\HPCHEM1\ECD_Q\Data\PQ081524\
 Data File : PQ067992.D
 Signal(s) : Signal #1: ECD1A.ch Signal #2: ECD2B.ch
 Acq On : 14 Aug 2024 17:20
 Operator : YP\AJ
 Sample : P3600-06MS
 Misc :
 ALS Vial : 16 Sample Multiplier: 1

Instrument :
 ECD_Q
 ClientSampleId :
 VCPS-B3-081324-10-18MS

Integration File signal 1: autoint1.e
 Integration File signal 2: autoint2.e
 Quant Time: Aug 15 05:03:35 2024
 Quant Method : Z:\pestpcbsrv\HPCHEM1\ECD_Q\Method\PQ080524.M
 Quant Title : GC EXTRACTABLES
 QLast Update : Fri Aug 09 02:37:44 2024
 Response via : Initial Calibration
 Integrator: ChemStation

Volume Inj. : 2 µl
 Signal #1 Phase : ZB-MR1 Signal #2 Phase: ZB-MR2
 Signal #1 Info : 30Mx0.32mmx 0.50µ Signal #2 Info : 30M x 0.32mm x 0.25µm

| | Compound | RT#1 | RT#2 | Resp#1 | Resp#2 | ng/ml | ng/ml |
|-----|--------------|-------|-------|----------|----------|---------|-----------|
| 42) | L9 AR-1268-2 | 7.673 | 6.626 | 66231383 | 186.0E6 | 126.825 | 242.906 # |
| 43) | L9 AR-1268-3 | 7.863 | 6.832 | 3523579 | 5029853 | 7.578 | 7.210 |
| 44) | L9 AR-1268-4 | 8.199 | 7.121 | 44239695 | 59577692 | 275.547 | 253.464 |
| 45) | L9 AR-1268-5 | 8.500 | 7.389 | 14408411 | 20179678 | 11.623 | 10.523 |

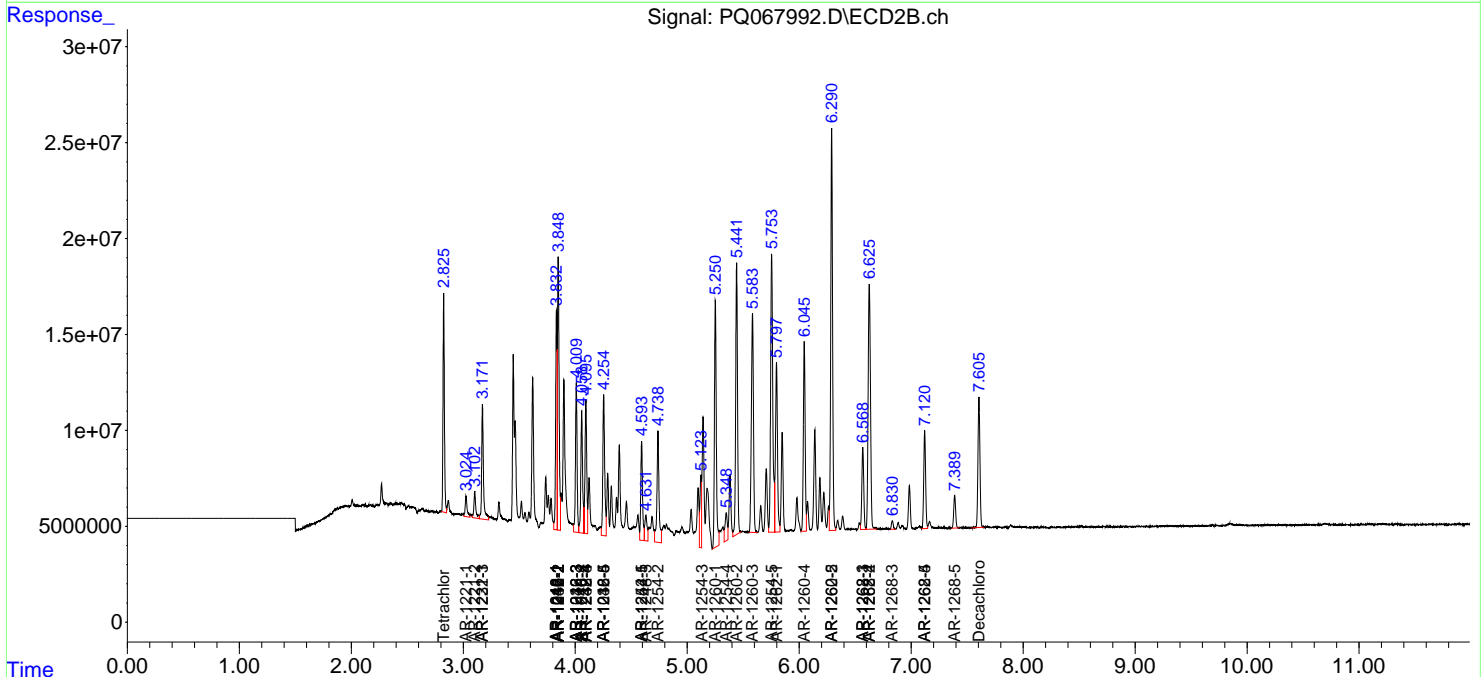
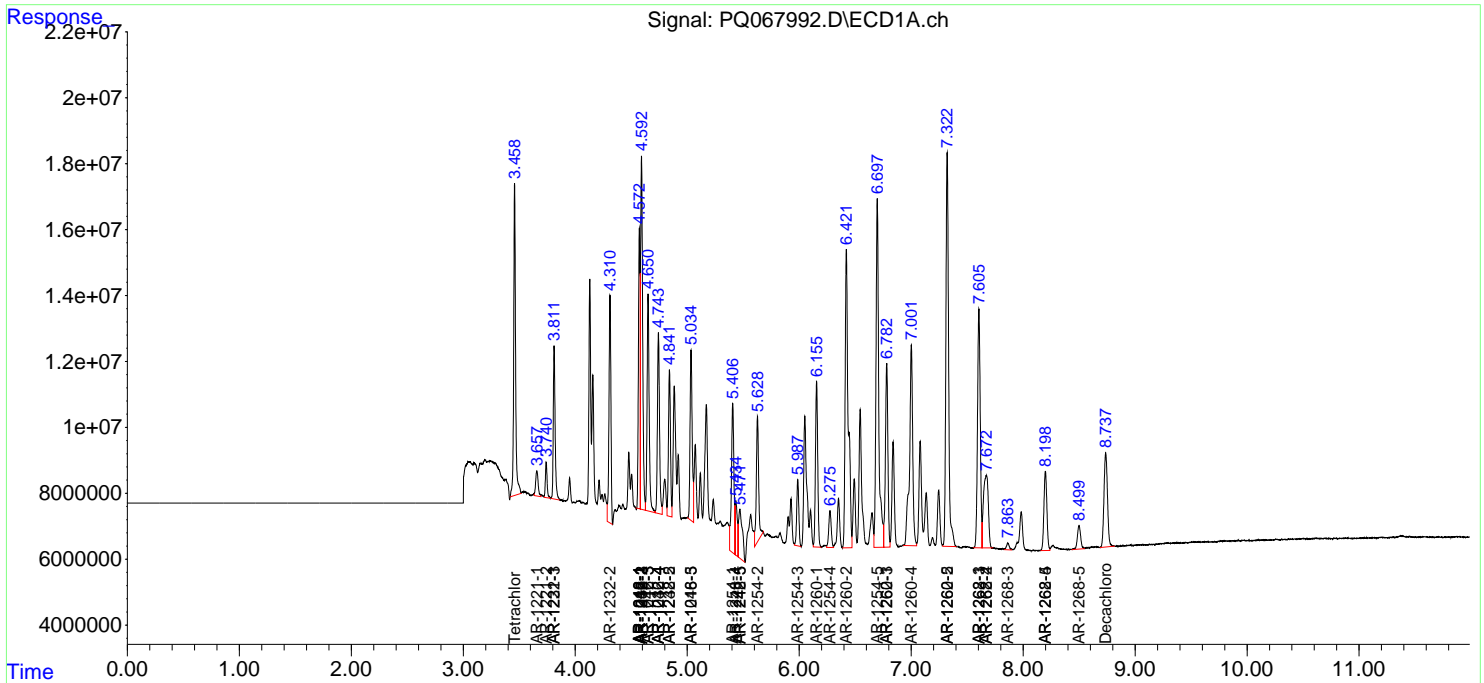
(f)=RT Delta > 1/2 Window (#)=Amounts differ by > 25% (m)=manual int.

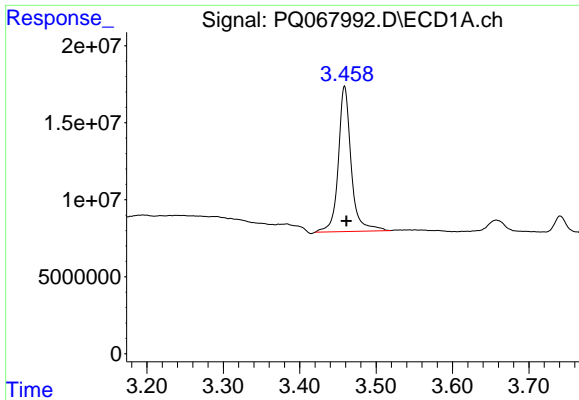
Data Path : Z:\pestpcbsrv\HPCHEM1\ECD_Q\Data\PQ081524\
 Data File : PQ067992.D
 Signal(s) : Signal #1: ECD1A.ch Signal #2: ECD2B.ch
 Acq On : 14 Aug 2024 17:20
 Operator : YP\AJ
 Sample : P3600-06MS
 Misc :
 ALS Vial : 16 Sample Multiplier: 1

Instrument :
 ECD_Q
 ClientSampleId :
 VCPS-B3-081324-10-18MS

Integration File signal 1: autoint1.e
 Integration File signal 2: autoint2.e
 Quant Time: Aug 15 05:03:35 2024
 Quant Method : Z:\pestpcbsrv\HPCHEM1\ECD_Q\Method\PQ080524.M
 Quant Title : GC EXTRACTABLES
 QLast Update : Fri Aug 09 02:37:44 2024
 Response via : Initial Calibration
 Integrator: ChemStation

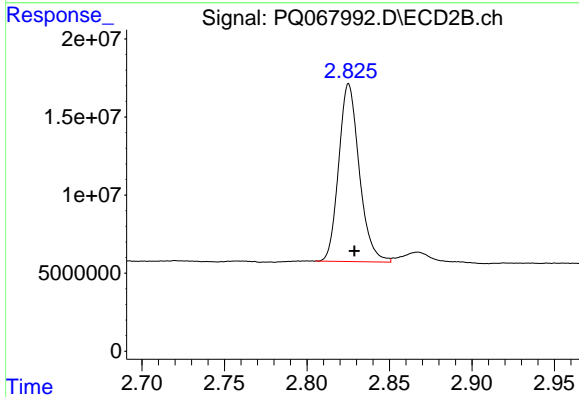
Volume Inj. : 2 µl
 Signal #1 Phase : ZB-MR1 Signal #2 Phase: ZB-MR2
 Signal #1 Info : 30Mx0.32mmx 0.50µ Signal #2 Info : 30M x 0.32mm x 0.25µm



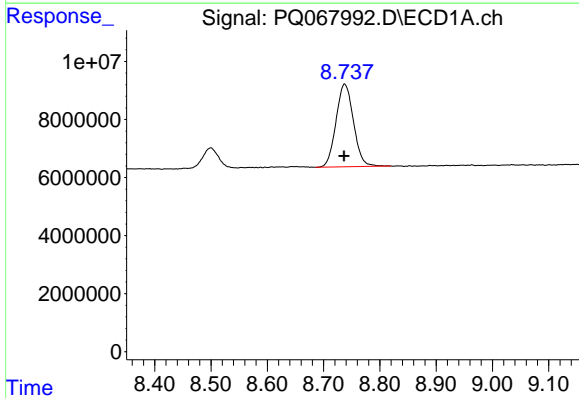


#1 Tetrachloro-m-xylene
R.T.: 3.459 min
Delta R.T.: -0.002 min
Response: 110178271
Conc: 18.57 ng/ml

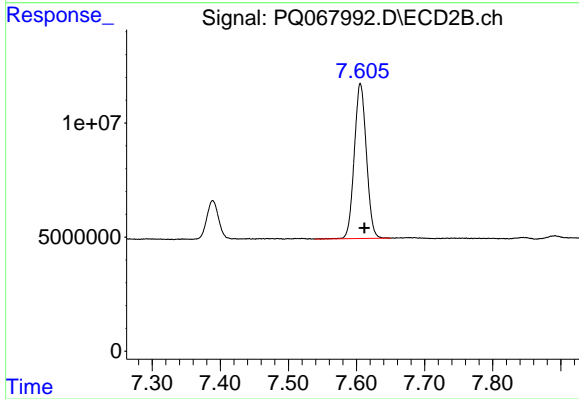
Instrument :
ECD_Q
ClientSampleId :
VCPS-B3-081324-10-18MS



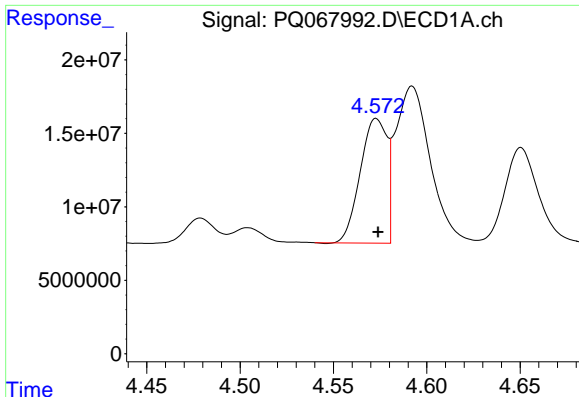
#1 Tetrachloro-m-xylene
R.T.: 2.825 min
Delta R.T.: -0.003 min
Response: 98832023
Conc: 15.58 ng/ml



#2 Decachlorobiphenyl
R.T.: 8.737 min
Delta R.T.: 0.001 min
Response: 61440551
Conc: 15.95 ng/ml



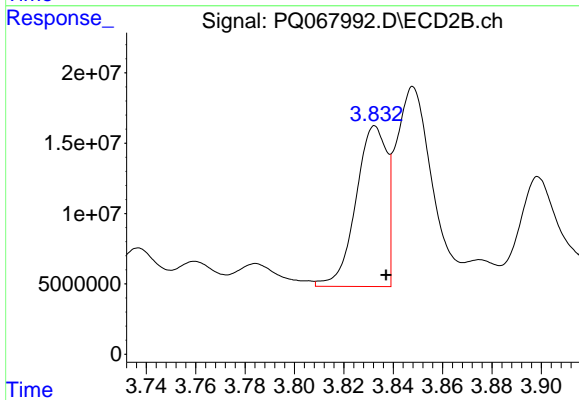
#2 Decachlorobiphenyl
R.T.: 7.606 min
Delta R.T.: -0.006 min
Response: 83782702
Conc: 14.87 ng/ml



#3 AR-1016-1

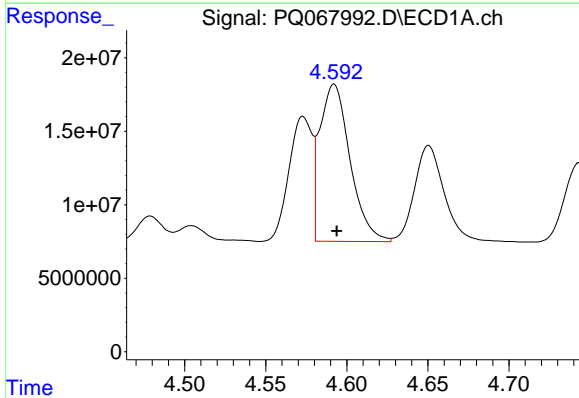
R.T.: 4.573 min
 Delta R.T.: -0.001 min
 Response: 84305119
 Conc: 510.05 ng/ml

Instrument :
 ECD_Q
 ClientSampleId :
 VCPS-B3-081324-10-18MS



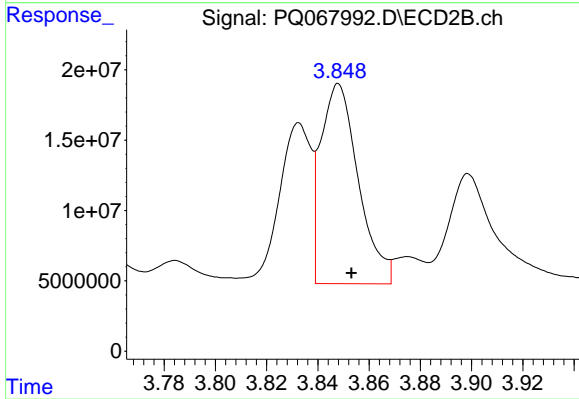
#3 AR-1016-1

R.T.: 3.833 min
 Delta R.T.: -0.004 min
 Response: 98515597
 Conc: 558.94 ng/ml



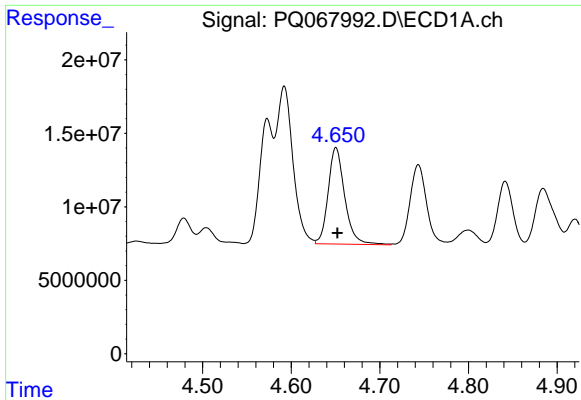
#4 AR-1016-2

R.T.: 4.592 min
 Delta R.T.: -0.002 min
 Response: 138865572
 Conc: 471.64 ng/ml



#4 AR-1016-2

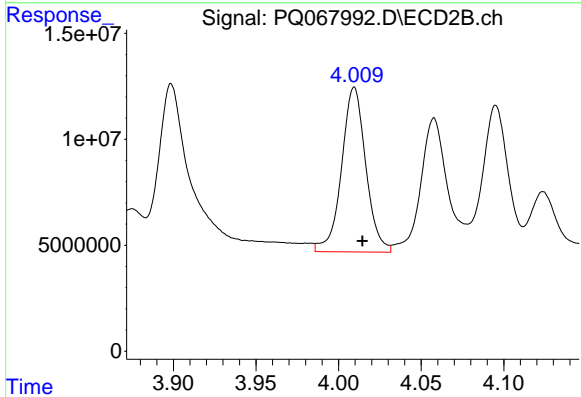
R.T.: 3.848 min
 Delta R.T.: -0.005 min
 Response: 144825643
 Conc: 496.68 ng/ml



#5 AR-1016-3

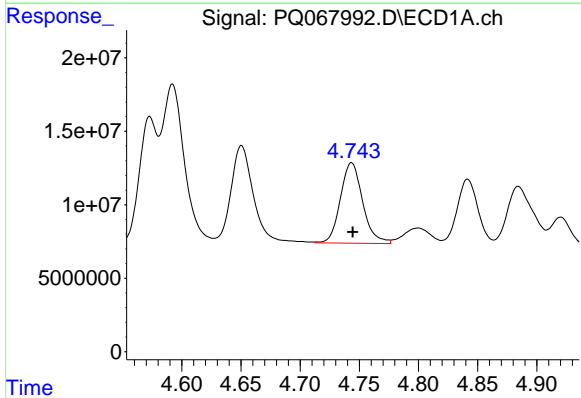
R.T.: 4.650 min
 Delta R.T.: -0.002 min
 Response: 85551224
 Conc: 448.20 ng/ml

Instrument :
 ECD_Q
 ClientSampleId :
 VCPS-B3-081324-10-18MS



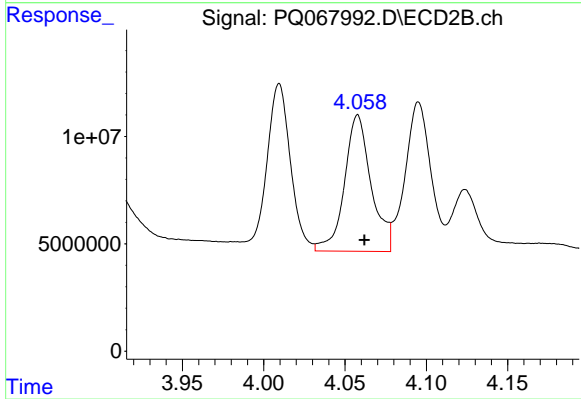
#5 AR-1016-3

R.T.: 4.010 min
 Delta R.T.: -0.005 min
 Response: 79383471
 Conc: 504.26 ng/ml



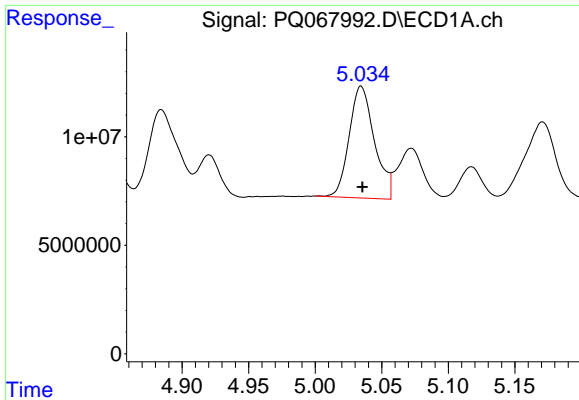
#6 AR-1016-4

R.T.: 4.743 min
 Delta R.T.: -0.001 min
 Response: 71957517
 Conc: 478.30 ng/ml



#6 AR-1016-4

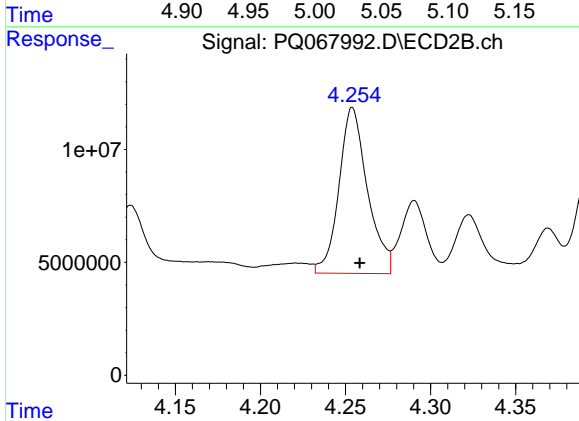
R.T.: 4.058 min
 Delta R.T.: -0.004 min
 Response: 72576866
 Conc: 488.40 ng/ml



#7 AR-1016-5

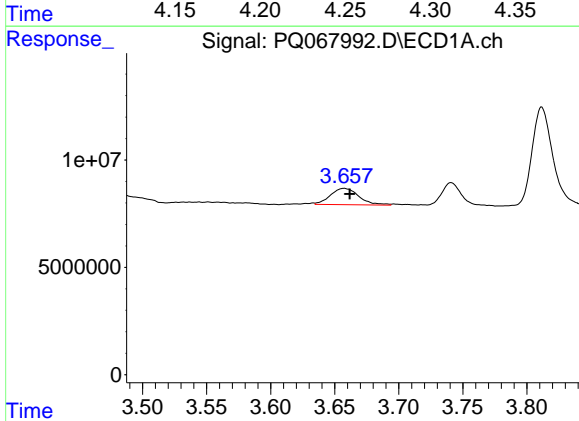
R.T.: 5.035 min
 Delta R.T.: -0.001 min
 Response: 68233018
 Conc: 466.82 ng/ml

Instrument :
 ECD_Q
 ClientSampleId :
 VCPS-B3-081324-10-18MS



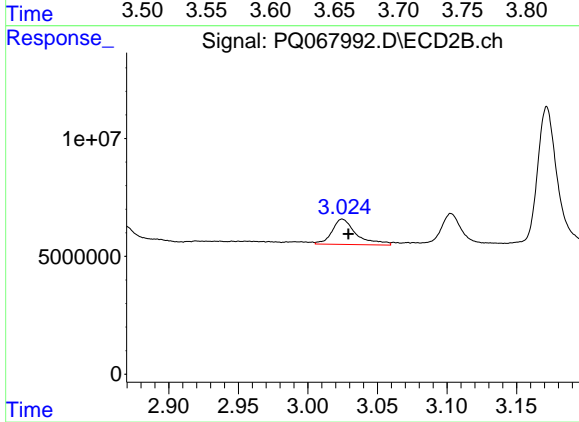
#7 AR-1016-5

R.T.: 4.254 min
 Delta R.T.: -0.004 min
 Response: 85705084
 Conc: 501.01 ng/ml



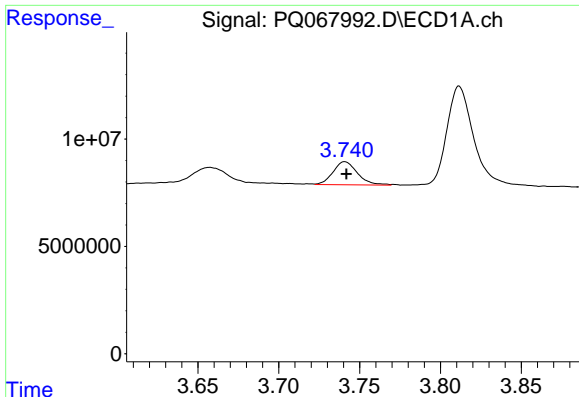
#8 AR-1221-1

R.T.: 3.657 min
 Delta R.T.: -0.004 min
 Response: 11843738
 Conc: 158.14 ng/ml



#8 AR-1221-1

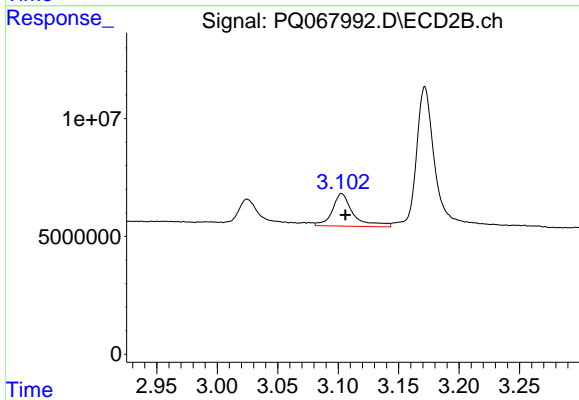
R.T.: 3.025 min
 Delta R.T.: -0.004 min
 Response: 13154035
 Conc: 177.94 ng/ml



#9 AR-1221-2

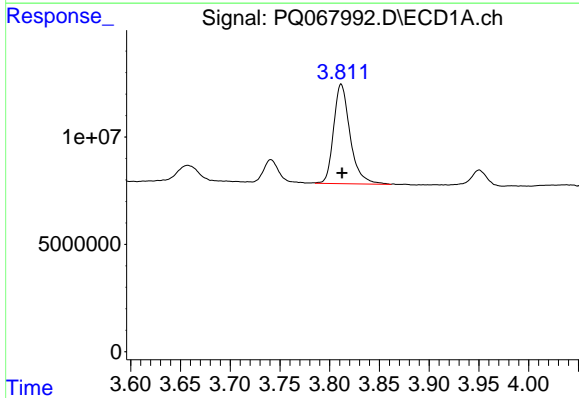
R.T.: 3.741 min
 Delta R.T.: 0.000 min
 Response: 11368219
 Conc: 198.76 ng/ml

Instrument :
 ECD_Q
 ClientSampleId :
 VCPS-B3-081324-10-18MS



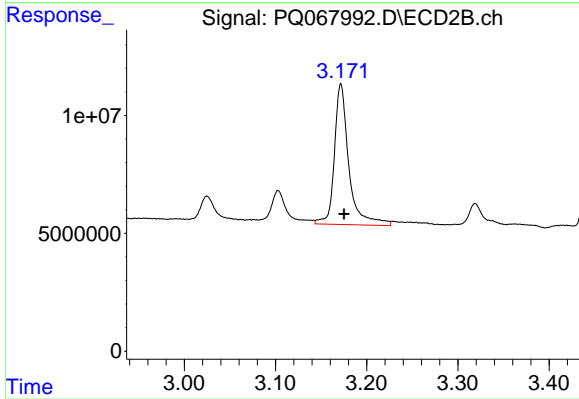
#9 AR-1221-2

R.T.: 3.103 min
 Delta R.T.: -0.003 min
 Response: 16794021
 Conc: 301.54 ng/ml



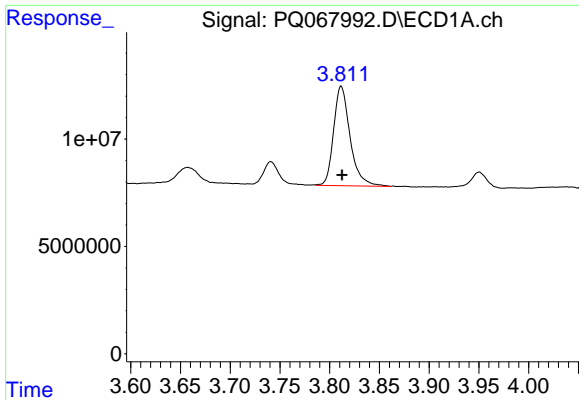
#10 AR-1221-3

R.T.: 3.812 min
 Delta R.T.: -0.001 min
 Response: 53550746
 Conc: 320.63 ng/ml



#10 AR-1221-3

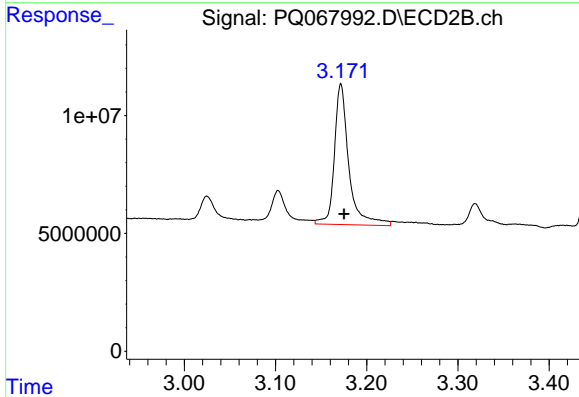
R.T.: 3.172 min
 Delta R.T.: -0.003 min
 Response: 65729461
 Conc: 363.59 ng/ml



#11 AR-1232-1

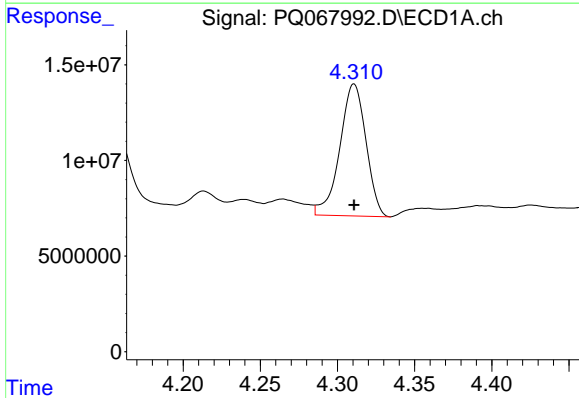
R.T.: 3.812 min
 Delta R.T.: -0.001 min
 Response: 53550746
 Conc: 393.04 ng/ml

Instrument :
 ECD_Q
 ClientSampleId :
 VCPS-B3-081324-10-18MS



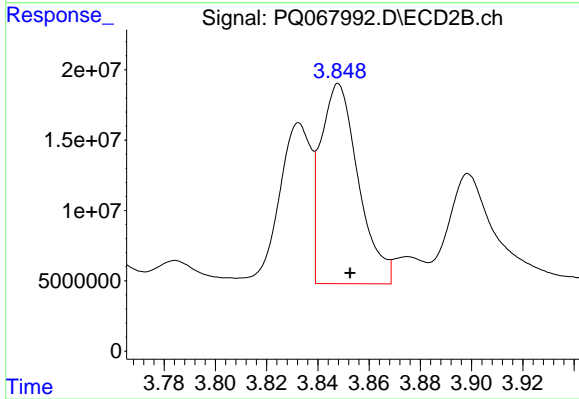
#11 AR-1232-1

R.T.: 3.172 min
 Delta R.T.: -0.004 min
 Response: 65729461
 Conc: 447.34 ng/ml



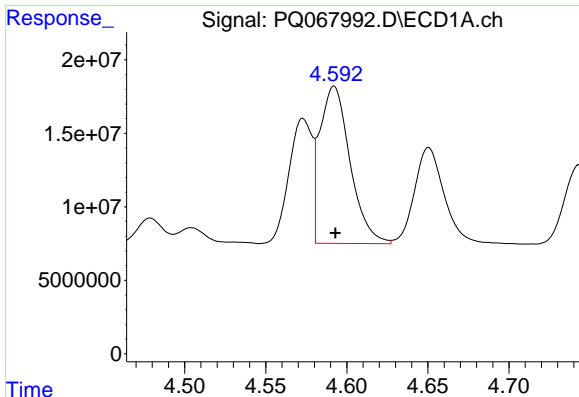
#12 AR-1232-2

R.T.: 4.311 min
 Delta R.T.: 0.000 min
 Response: 81443067
 Conc: 1126.94 ng/ml



#12 AR-1232-2

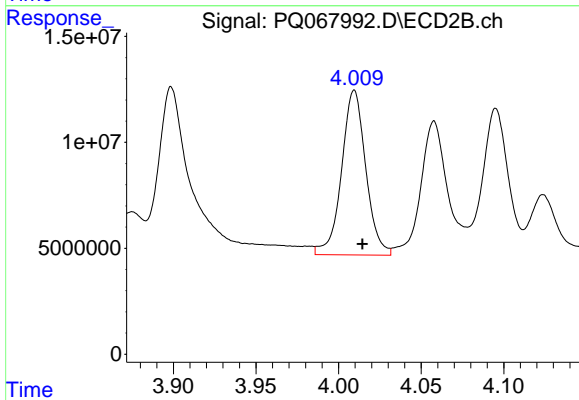
R.T.: 3.848 min
 Delta R.T.: -0.004 min
 Response: 144825643
 Conc: 1067.59 ng/ml



#13 AR-1232-3

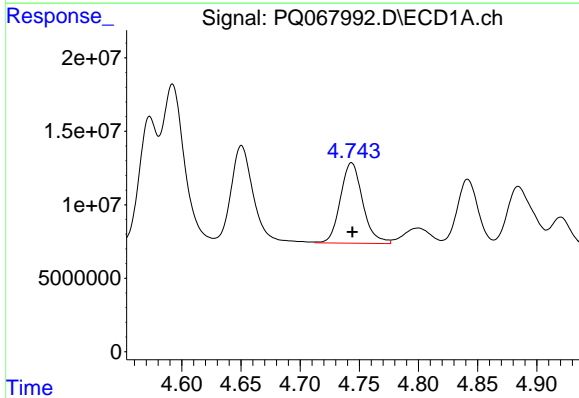
R.T.: 4.592 min
 Delta R.T.: 0.000 min
 Response: 138865572
 Conc: 984.47 ng/ml

Instrument :
 ECD_Q
 ClientSampleId :
 VCPS-B3-081324-10-18MS



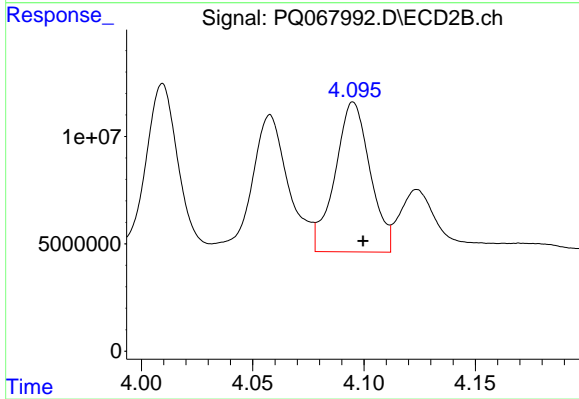
#13 AR-1232-3

R.T.: 4.010 min
 Delta R.T.: -0.005 min
 Response: 79383471
 Conc: 1048.20 ng/ml



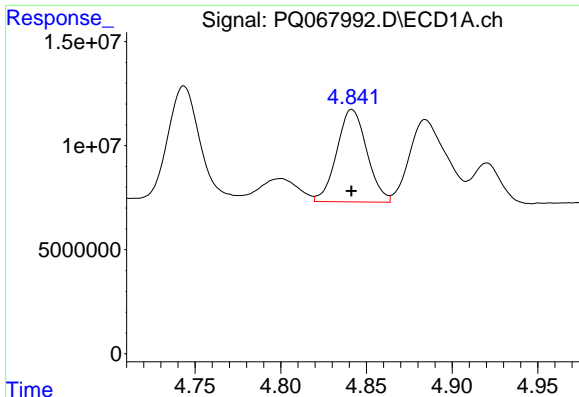
#14 AR-1232-4

R.T.: 4.743 min
 Delta R.T.: 0.000 min
 Response: 71957517
 Conc: 1025.87 ng/ml



#14 AR-1232-4

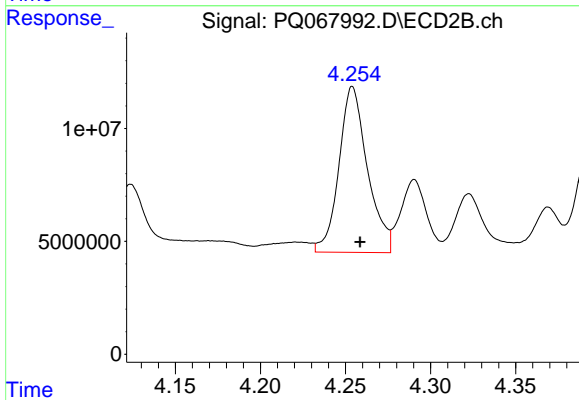
R.T.: 4.095 min
 Delta R.T.: -0.004 min
 Response: 76522344
 Conc: 1108.71 ng/ml



#15 AR-1232-5

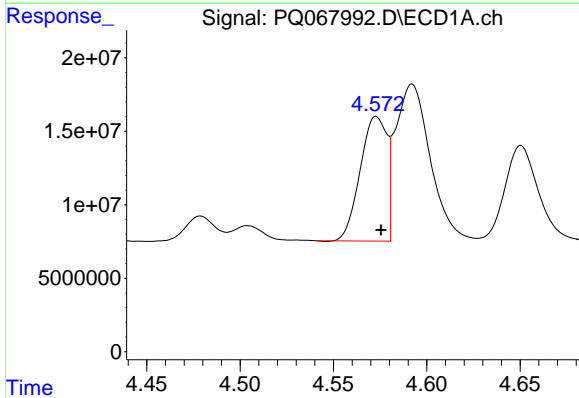
R.T.: 4.841 min
 Delta R.T.: 0.000 min
 Response: 54227505
 Conc: 1111.97 ng/ml

Instrument :
 ECD_Q
 ClientSampleId :
 VCPS-B3-081324-10-18MS



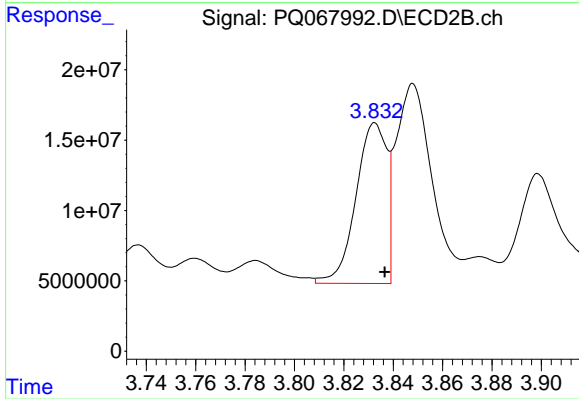
#15 AR-1232-5

R.T.: 4.254 min
 Delta R.T.: -0.005 min
 Response: 85705084
 Conc: 1127.22 ng/ml



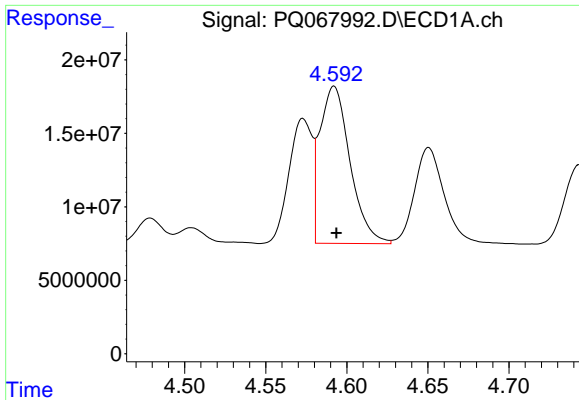
#16 AR-1242-1

R.T.: 4.573 min
 Delta R.T.: -0.003 min
 Response: 84305119
 Conc: 626.39 ng/ml



#16 AR-1242-1

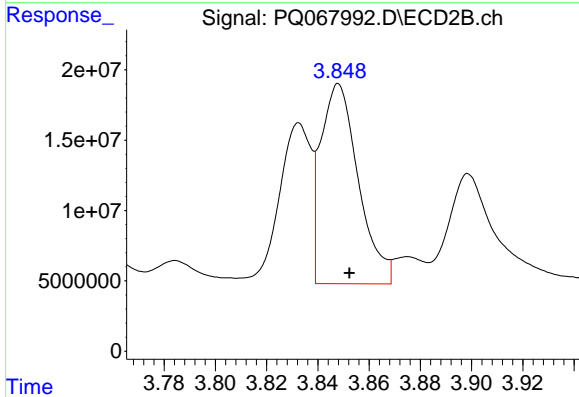
R.T.: 3.833 min
 Delta R.T.: -0.004 min
 Response: 98515597
 Conc: 687.25 ng/ml



#17 AR-1242-2

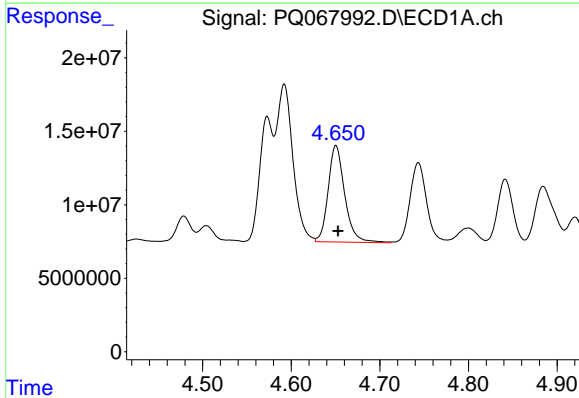
R.T.: 4.592 min
 Delta R.T.: -0.001 min
 Response: 138865572
 Conc: 593.00 ng/ml

Instrument :
 ECD_Q
 ClientSampleId :
 VCPS-B3-081324-10-18MS



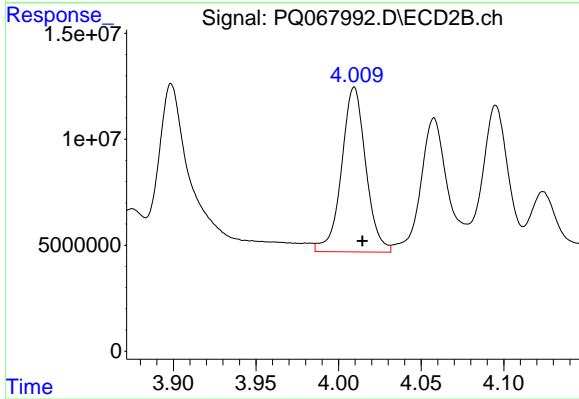
#17 AR-1242-2

R.T.: 3.848 min
 Delta R.T.: -0.004 min
 Response: 144825643
 Conc: 618.05 ng/ml



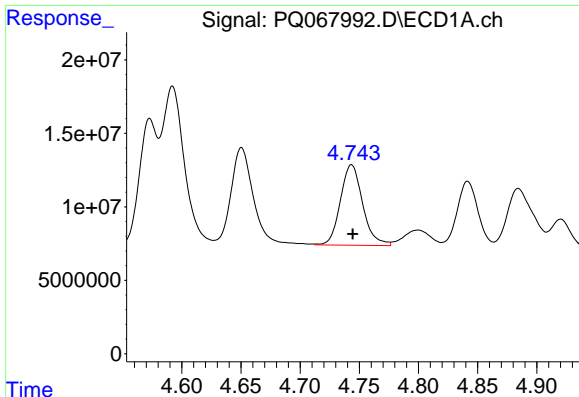
#18 AR-1242-3

R.T.: 4.650 min
 Delta R.T.: -0.002 min
 Response: 85551224
 Conc: 570.61 ng/ml



#18 AR-1242-3

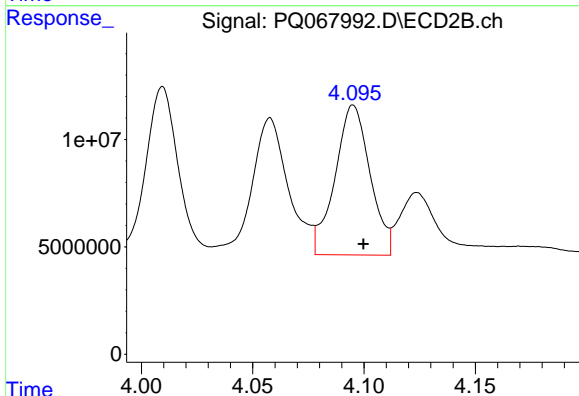
R.T.: 4.010 min
 Delta R.T.: -0.005 min
 Response: 79383471
 Conc: 614.87 ng/ml



#19 AR-1242-4

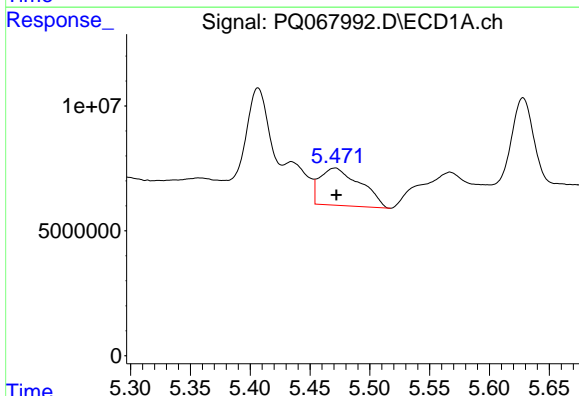
R.T.: 4.743 min
 Delta R.T.: -0.001 min
 Response: 71957517
 Conc: 616.89 ng/ml

Instrument :
 ECD_Q
 ClientSampleId :
 VCPS-B3-081324-10-18MS



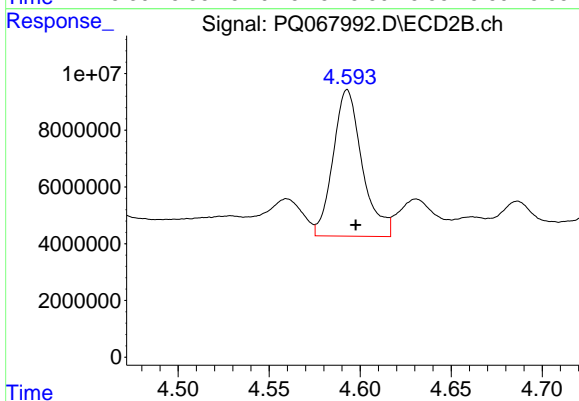
#19 AR-1242-4

R.T.: 4.095 min
 Delta R.T.: -0.005 min
 Response: 76522344
 Conc: 586.01 ng/ml



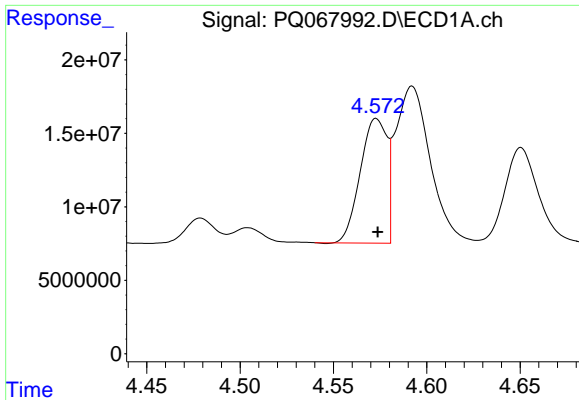
#20 AR-1242-5

R.T.: 5.471 min
 Delta R.T.: 0.000 min
 Response: 35343314
 Conc: 311.37 ng/ml



#20 AR-1242-5

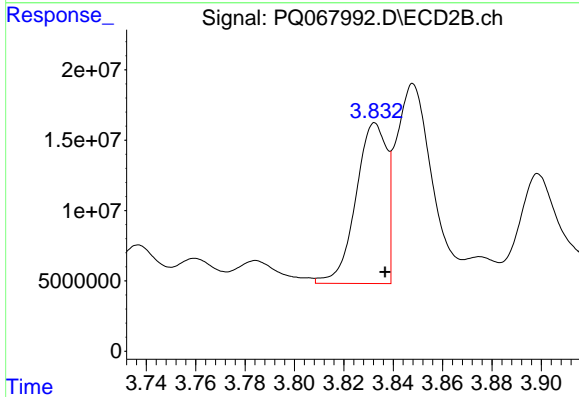
R.T.: 4.593 min
 Delta R.T.: -0.005 min
 Response: 57590773
 Conc: 376.84 ng/ml



#21 AR-1248-1

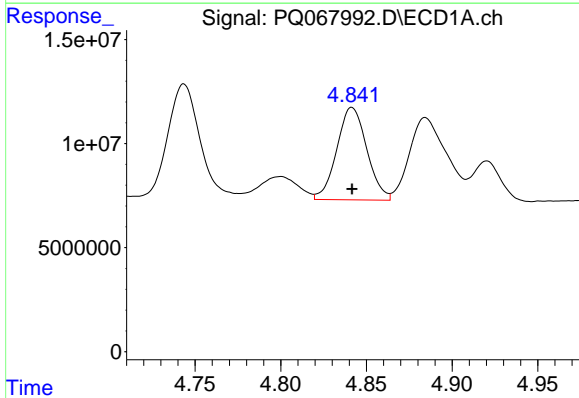
R.T.: 4.573 min
 Delta R.T.: 0.000 min
 Response: 84305119
 Conc: 807.41 ng/ml

Instrument :
 ECD_Q
 ClientSampleId :
 VCPS-B3-081324-10-18MS



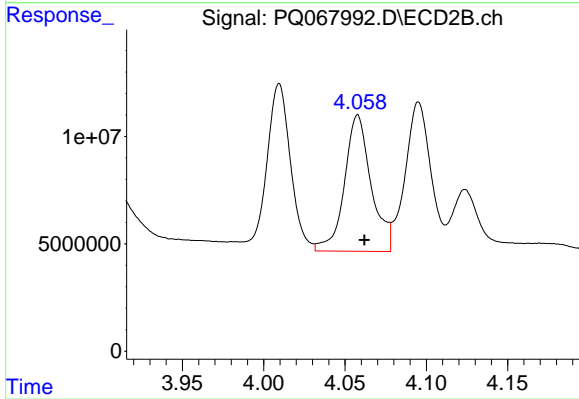
#21 AR-1248-1

R.T.: 3.833 min
 Delta R.T.: -0.004 min
 Response: 98515597
 Conc: 866.35 ng/ml



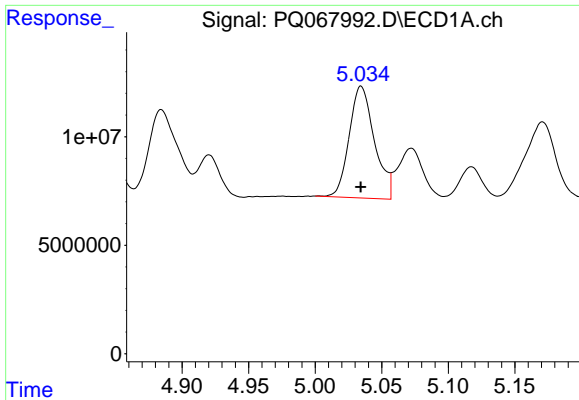
#22 AR-1248-2

R.T.: 4.841 min
 Delta R.T.: 0.000 min
 Response: 54227505
 Conc: 321.18 ng/ml



#22 AR-1248-2

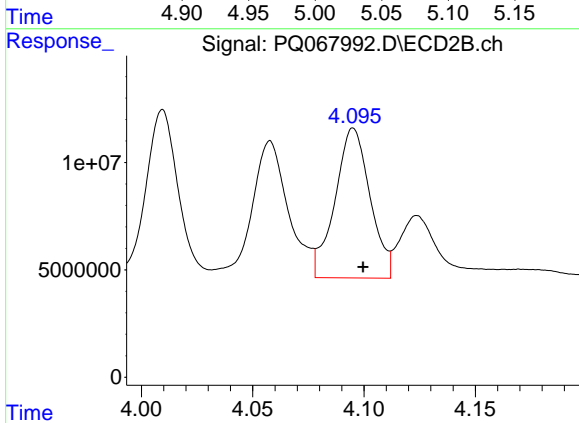
R.T.: 4.058 min
 Delta R.T.: -0.004 min
 Response: 72576866
 Conc: 346.71 ng/ml



#23 AR-1248-3

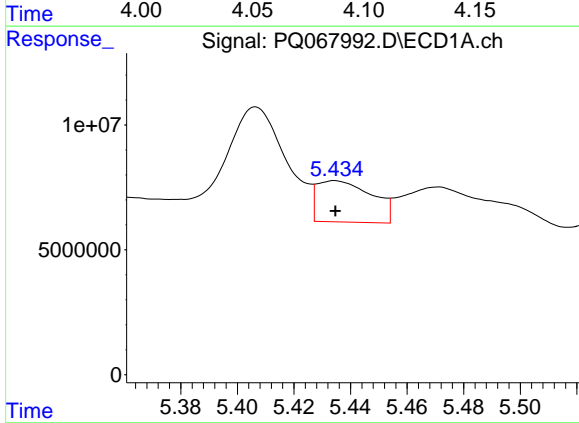
R.T.: 5.035 min
 Delta R.T.: 0.000 min
 Response: 68233018
 Conc: 336.33 ng/ml

Instrument :
 ECD_Q
 ClientSampleId :
 VCPS-B3-081324-10-18MS



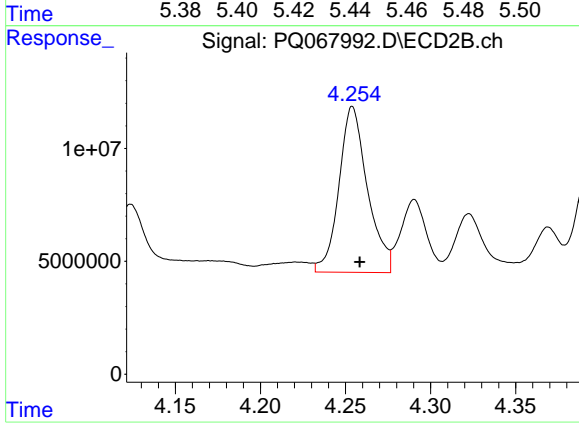
#23 AR-1248-3

R.T.: 4.095 min
 Delta R.T.: -0.004 min
 Response: 76522344
 Conc: 386.61 ng/ml



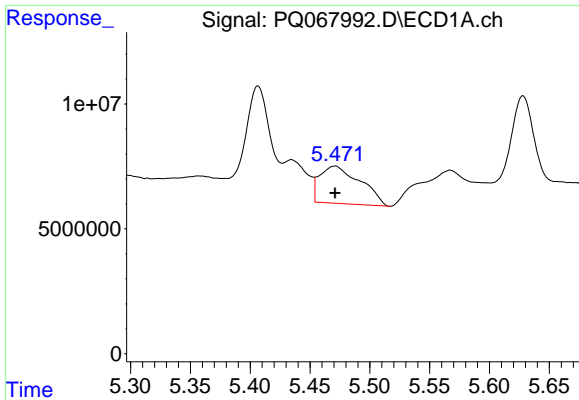
#24 AR-1248-4

R.T.: 5.435 min
 Delta R.T.: 0.000 min
 Response: 22212243
 Conc: 116.85 ng/ml



#24 AR-1248-4

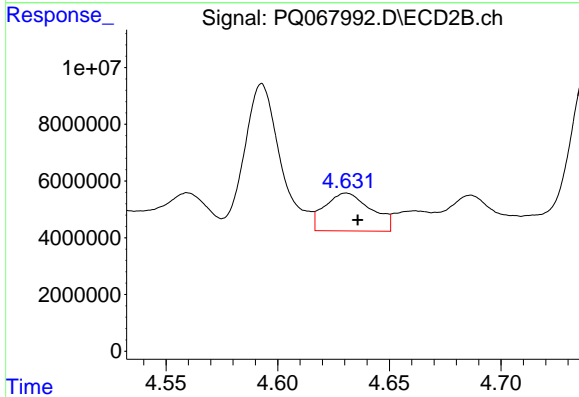
R.T.: 4.254 min
 Delta R.T.: -0.004 min
 Response: 85705084
 Conc: 363.39 ng/ml



#25 AR-1248-5

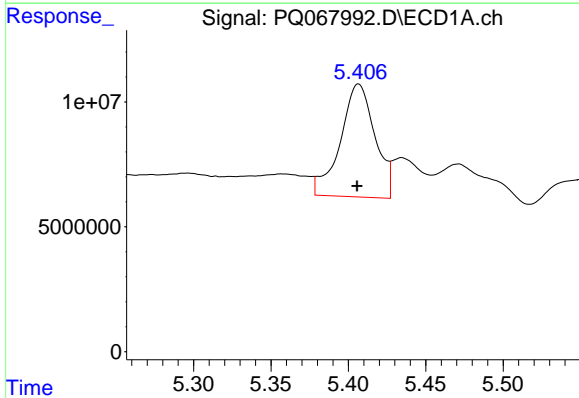
R.T.: 5.471 min
 Delta R.T.: 0.000 min
 Response: 35343314
 Conc: 176.31 ng/ml

Instrument : ECD_Q
 ClientSampleId : VCPS-B3-081324-10-18MS



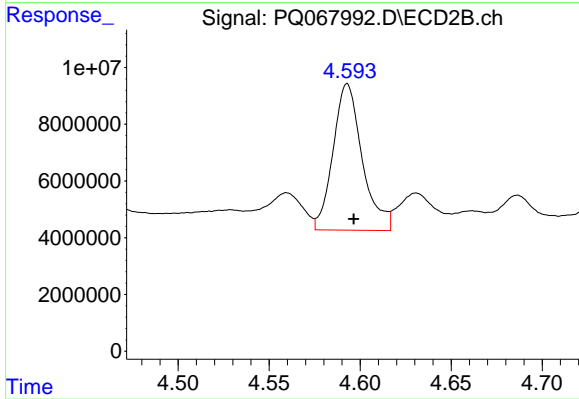
#25 AR-1248-5

R.T.: 4.631 min
 Delta R.T.: -0.005 min
 Response: 19352460
 Conc: 100.39 ng/ml



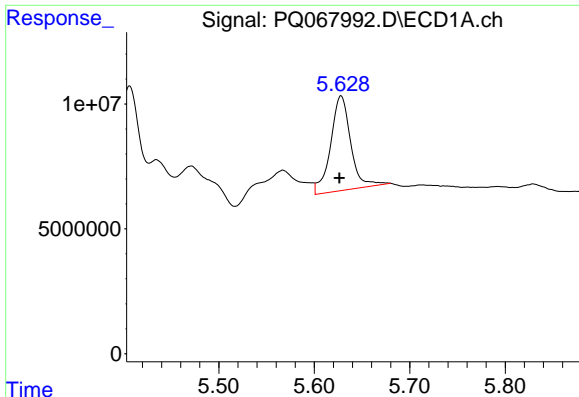
#26 AR-1254-1

R.T.: 5.407 min
 Delta R.T.: 0.000 min
 Response: 70490557
 Conc: 316.89 ng/ml



#26 AR-1254-1

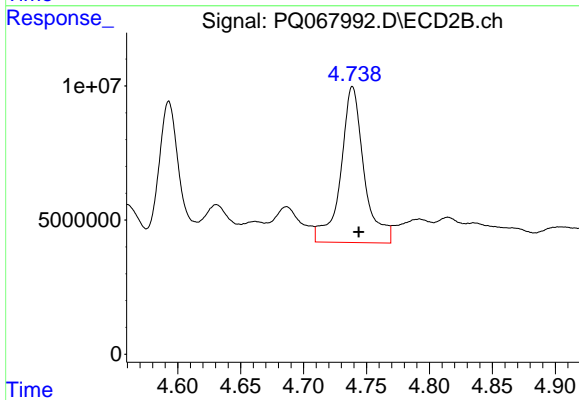
R.T.: 4.593 min
 Delta R.T.: -0.004 min
 Response: 57590773
 Conc: 171.45 ng/ml



#27 AR-1254-2

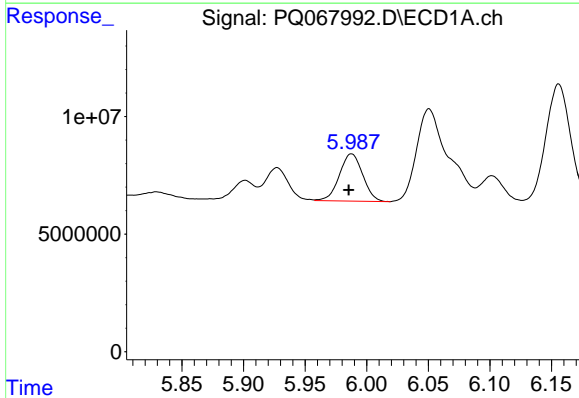
R.T.: 5.628 min
 Delta R.T.: 0.002 min
 Response: 55217820
 Conc: 171.02 ng/ml

Instrument :
 ECD_Q
 ClientSampleId :
 VCPS-B3-081324-10-18MS



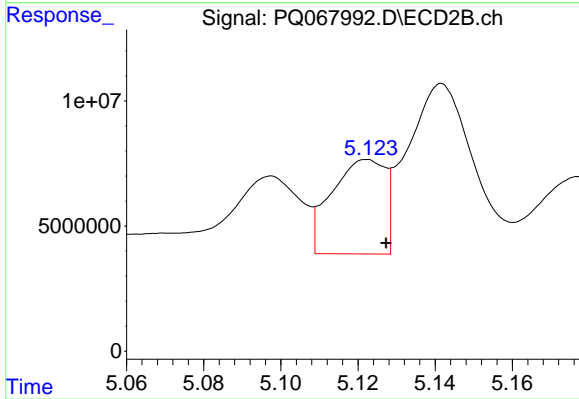
#27 AR-1254-2

R.T.: 4.739 min
 Delta R.T.: -0.005 min
 Response: 75113887
 Conc: 244.08 ng/ml



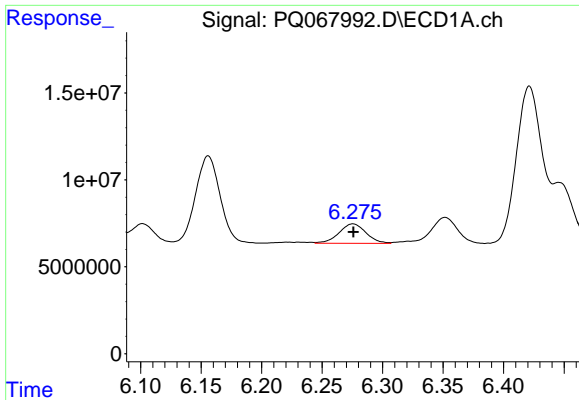
#28 AR-1254-3

R.T.: 5.988 min
 Delta R.T.: 0.002 min
 Response: 26464115
 Conc: 80.76 ng/ml



#28 AR-1254-3

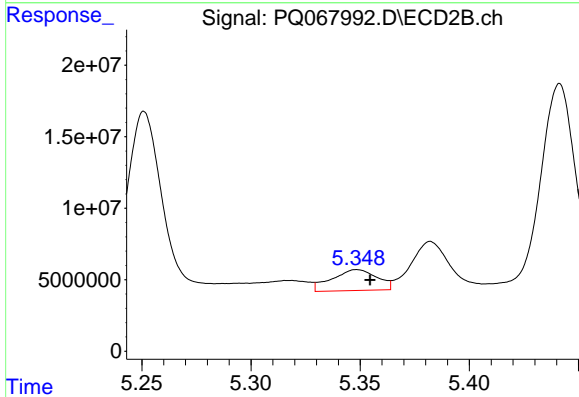
R.T.: 5.122 min
 Delta R.T.: -0.005 min
 Response: 36379566
 Conc: 81.56 ng/ml



#29 AR-1254-4

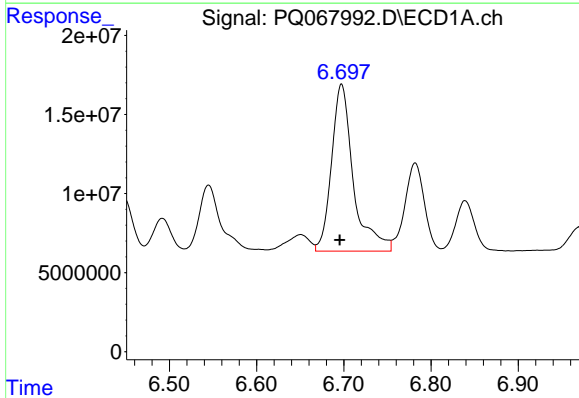
R.T.: 6.276 min
 Delta R.T.: 0.000 min
 Response: 17323544
 Conc: 86.43 ng/ml

Instrument :
 ECD_Q
 ClientSampleId :
 VCPS-B3-081324-10-18MS



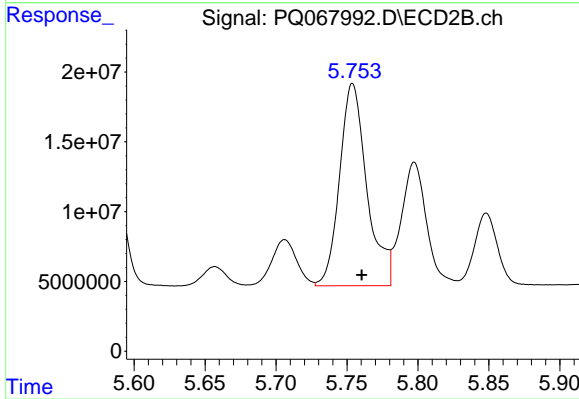
#29 AR-1254-4

R.T.: 5.348 min
 Delta R.T.: -0.006 min
 Response: 20940469
 Conc: 92.84 ng/ml



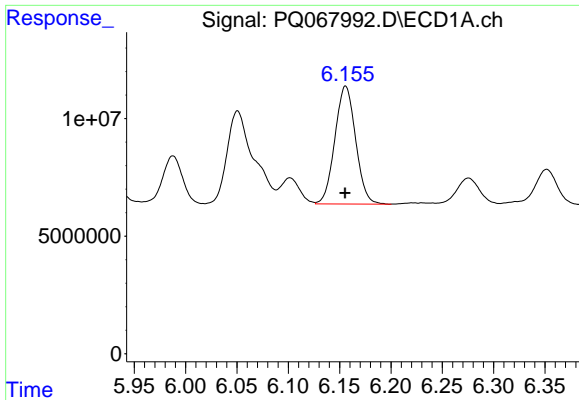
#30 AR-1254-5

R.T.: 6.697 min
 Delta R.T.: 0.002 min
 Response: 183890152
 Conc: 731.52 ng/ml



#30 AR-1254-5

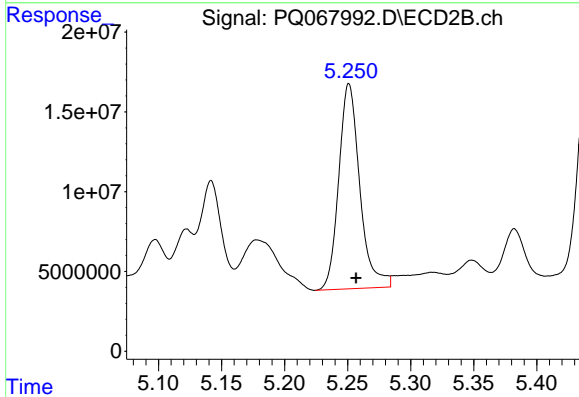
R.T.: 5.754 min
 Delta R.T.: -0.006 min
 Response: 194169666
 Conc: 472.08 ng/ml



#31 AR-1260-1

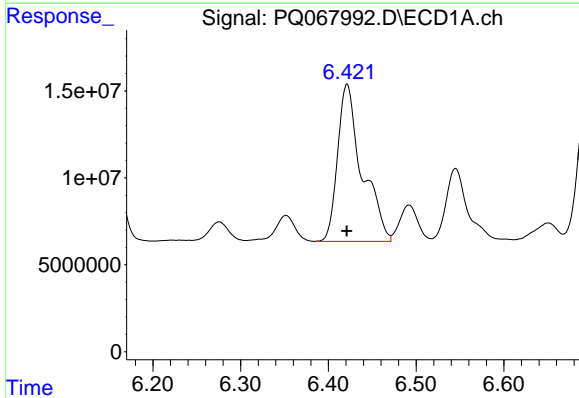
R.T.: 6.156 min
 Delta R.T.: 0.000 min
 Response: 70422062
 Conc: 257.03 ng/ml

Instrument :
 ECD_Q
 ClientSampleId :
 VCPS-B3-081324-10-18MS



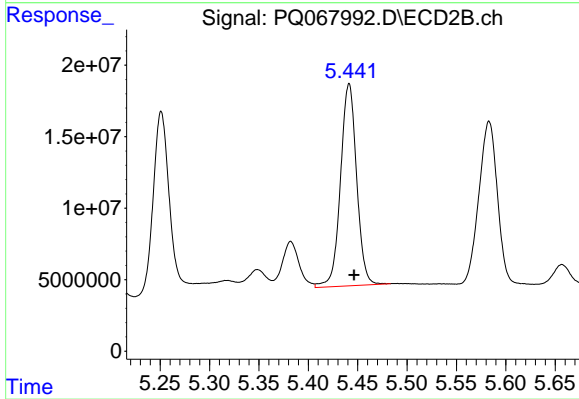
#31 AR-1260-1

R.T.: 5.251 min
 Delta R.T.: -0.006 min
 Response: 149537821
 Conc: 440.00 ng/ml



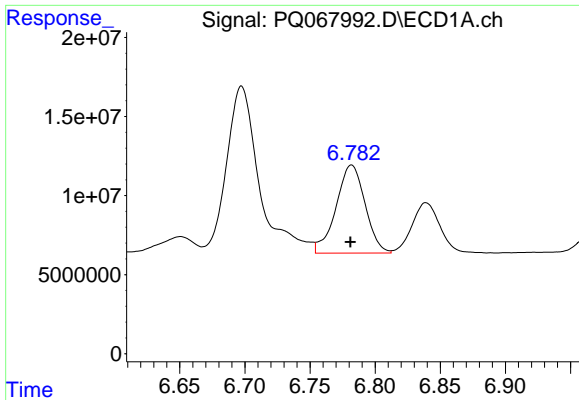
#32 AR-1260-2

R.T.: 6.421 min
 Delta R.T.: 0.000 min
 Response: 174431863
 Conc: 541.06 ng/ml



#32 AR-1260-2

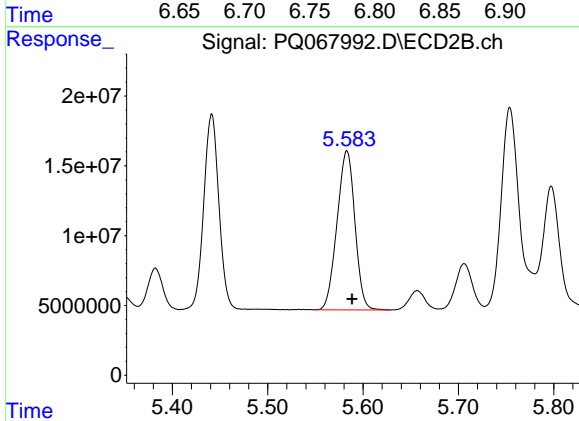
R.T.: 5.441 min
 Delta R.T.: -0.005 min
 Response: 160441498
 Conc: 409.84 ng/ml



#33 AR-1260-3

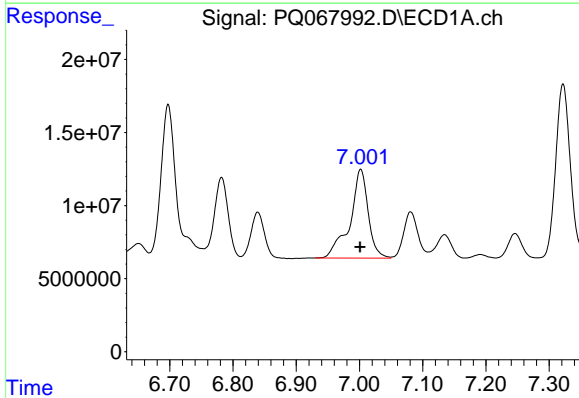
R.T.: 6.782 min
 Delta R.T.: 0.000 min
 Response: 86489176
 Conc: 377.62 ng/ml

Instrument :
 ECD_Q
 ClientSampleId :
 VCPS-B3-081324-10-18MS



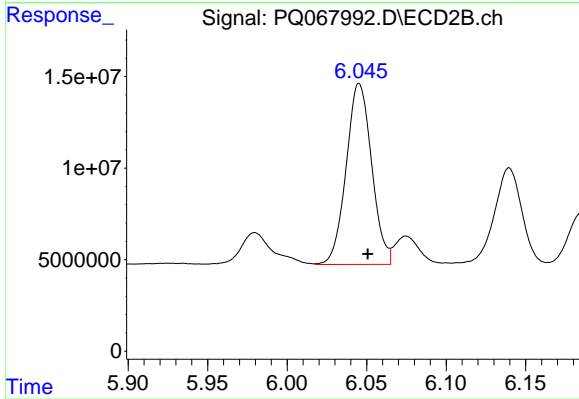
#33 AR-1260-3

R.T.: 5.583 min
 Delta R.T.: -0.005 min
 Response: 148548019
 Conc: 395.31 ng/ml



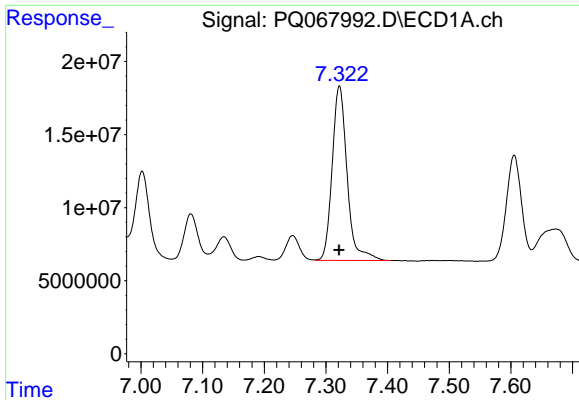
#34 AR-1260-4

R.T.: 7.002 min
 Delta R.T.: 0.000 min
 Response: 121457149
 Conc: 476.16 ng/ml



#34 AR-1260-4

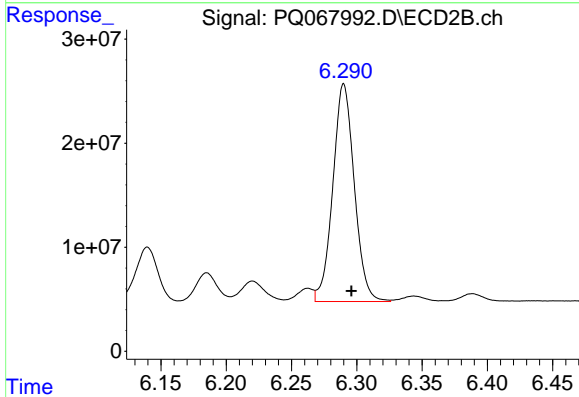
R.T.: 6.045 min
 Delta R.T.: -0.005 min
 Response: 110309283
 Conc: 381.32 ng/ml



#35 AR-1260-5

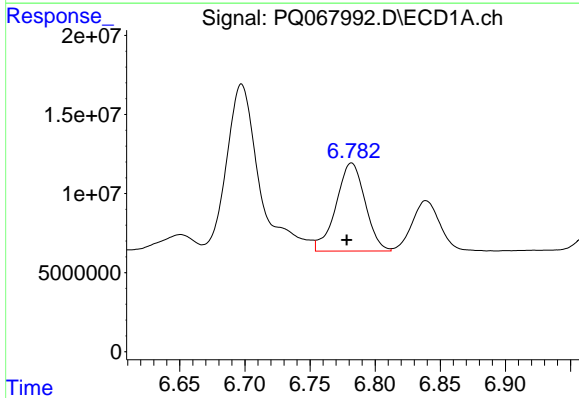
R.T.: 7.322 min
 Delta R.T.: 0.000 min
 Response: 201197759
 Conc: 454.53 ng/ml

Instrument :
 ECD_Q
 ClientSampleId :
 VCPS-B3-081324-10-18MS



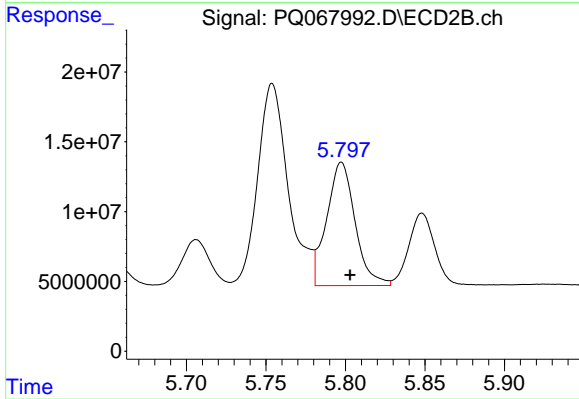
#35 AR-1260-5

R.T.: 6.290 min
 Delta R.T.: -0.006 min
 Response: 239664618
 Conc: 402.28 ng/ml



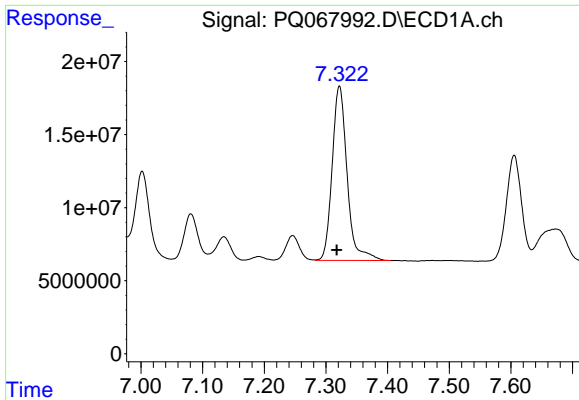
#36 AR-1262-1

R.T.: 6.782 min
 Delta R.T.: 0.004 min
 Response: 86489176
 Conc: 253.77 ng/ml



#36 AR-1262-1

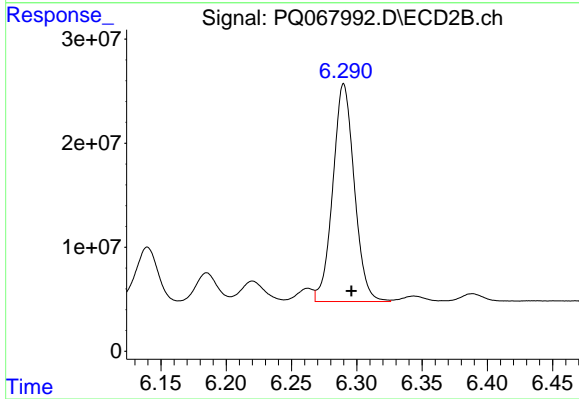
R.T.: 5.797 min
 Delta R.T.: -0.005 min
 Response: 109961180
 Conc: 246.24 ng/ml



#37 AR-1262-2

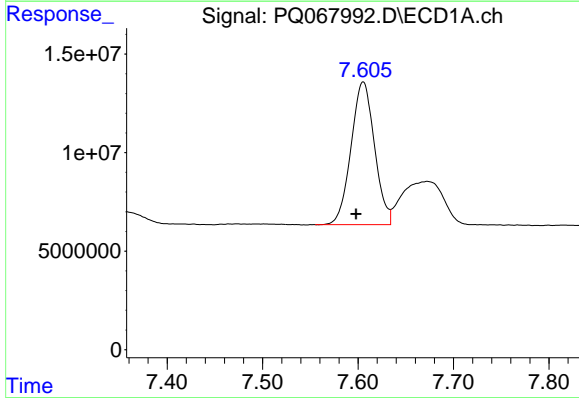
R.T.: 7.322 min
 Delta R.T.: 0.004 min
 Response: 201197759
 Conc: 371.86 ng/ml

Instrument :
 ECD_Q
 ClientSampleId :
 VCPS-B3-081324-10-18MS



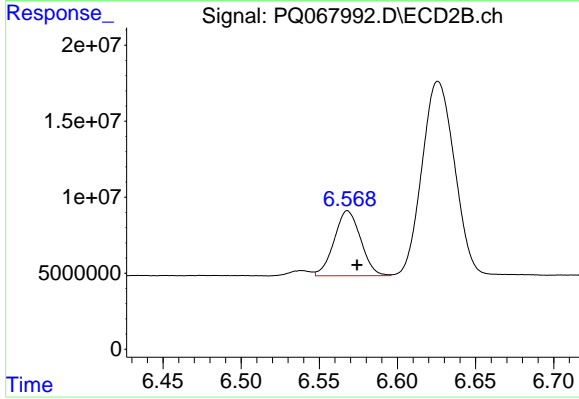
#37 AR-1262-2

R.T.: 6.290 min
 Delta R.T.: -0.006 min
 Response: 239664618
 Conc: 350.40 ng/ml



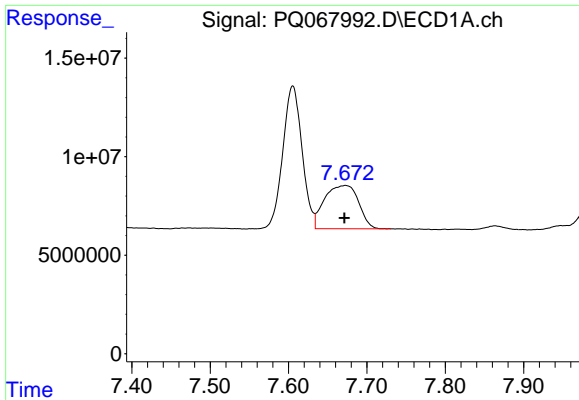
#38 AR-1262-3

R.T.: 7.605 min
 Delta R.T.: 0.008 min
 Response: 123719346
 Conc: 377.37 ng/ml



#38 AR-1262-3

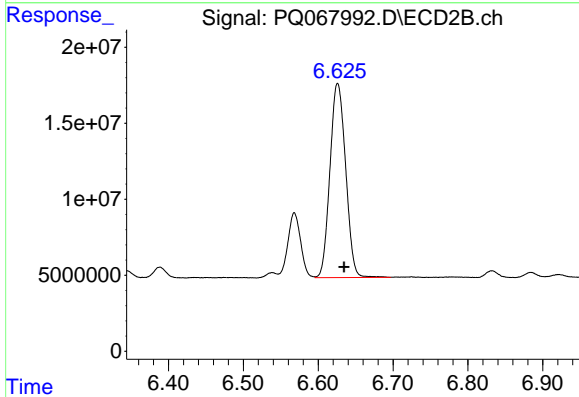
R.T.: 6.568 min
 Delta R.T.: -0.006 min
 Response: 50565534
 Conc: 167.37 ng/ml



#39 AR-1262-4

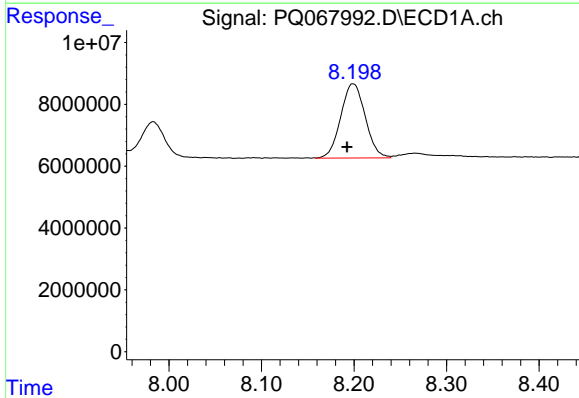
R.T.: 7.673 min
 Delta R.T.: 0.001 min
 Response: 66231383
 Conc: 247.67 ng/ml

Instrument : ECD_Q
 ClientSampleId : VCPS-B3-081324-10-18MS



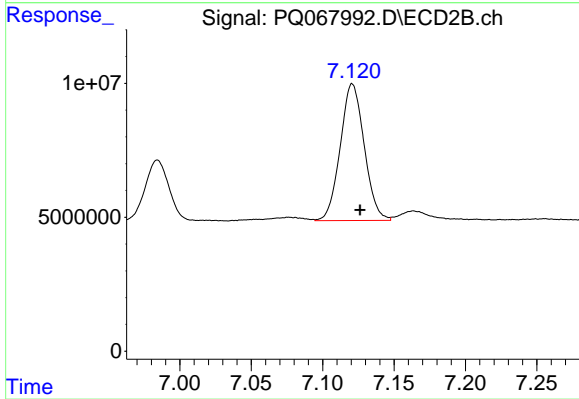
#39 AR-1262-4

R.T.: 6.626 min
 Delta R.T.: -0.009 min
 Response: 186034820
 Conc: 353.48 ng/ml



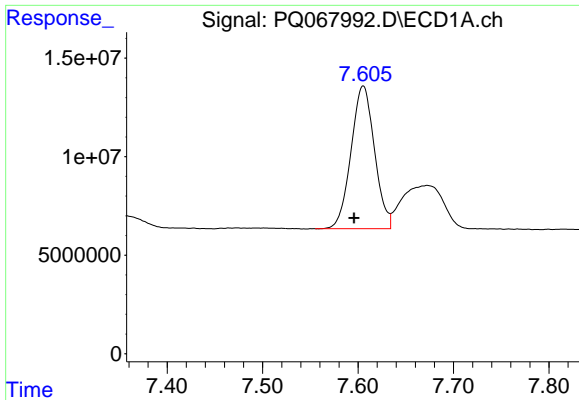
#40 AR-1262-5

R.T.: 8.199 min
 Delta R.T.: 0.006 min
 Response: 44239695
 Conc: 297.69 ng/ml



#40 AR-1262-5

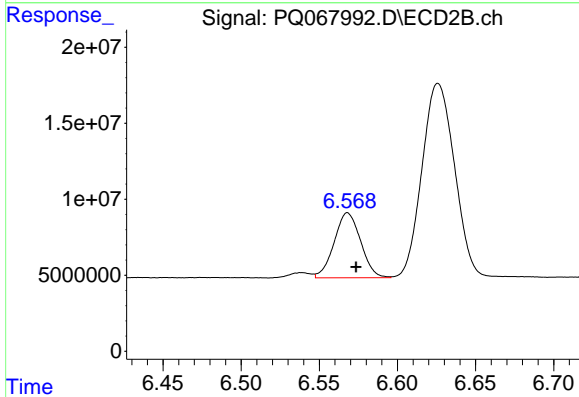
R.T.: 7.121 min
 Delta R.T.: -0.005 min
 Response: 59577692
 Conc: 278.21 ng/ml



#41 AR-1268-1

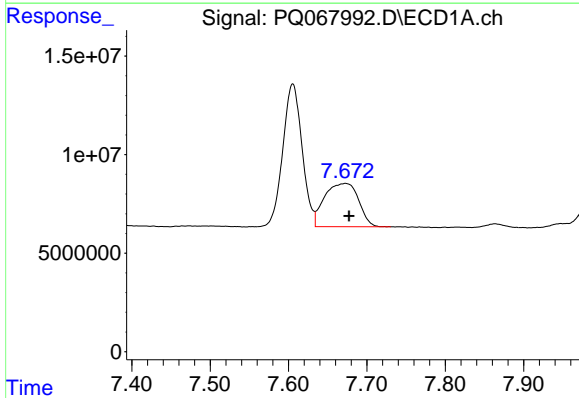
R.T.: 7.605 min
 Delta R.T.: 0.010 min
 Response: 123719346
 Conc: 211.28 ng/ml

Instrument :
 ECD_Q
 ClientSampleId :
 VCPS-B3-081324-10-18MS



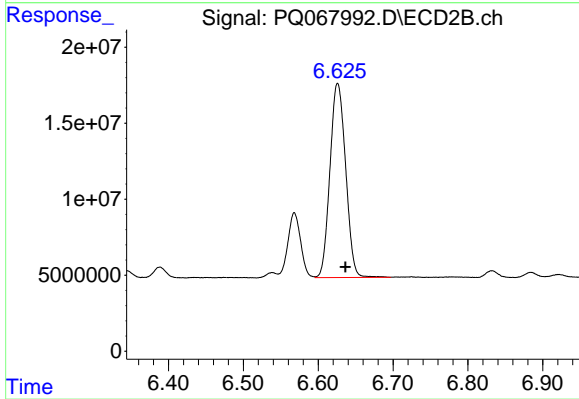
#41 AR-1268-1

R.T.: 6.568 min
 Delta R.T.: -0.005 min
 Response: 50565534
 Conc: 60.08 ng/ml



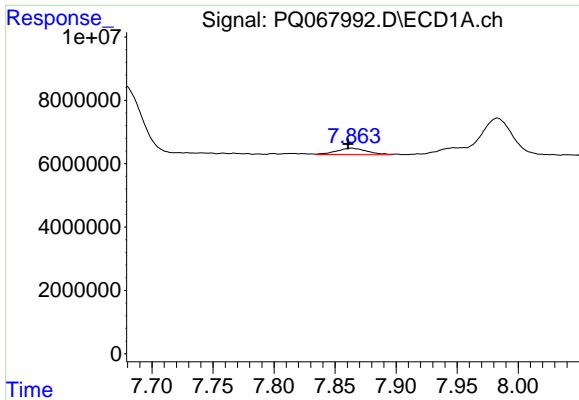
#42 AR-1268-2

R.T.: 7.673 min
 Delta R.T.: -0.004 min
 Response: 66231383
 Conc: 126.82 ng/ml



#42 AR-1268-2

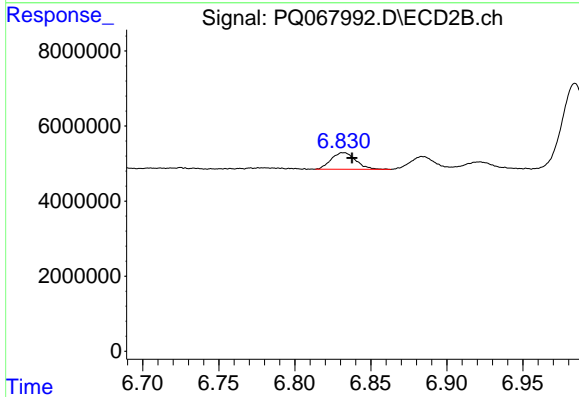
R.T.: 6.626 min
 Delta R.T.: -0.010 min
 Response: 186034820
 Conc: 242.91 ng/ml



#43 AR-1268-3

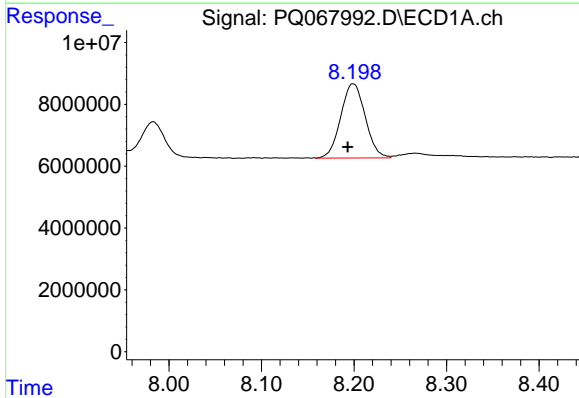
R.T.: 7.863 min
 Delta R.T.: 0.003 min
 Response: 3523579
 Conc: 7.58 ng/ml

Instrument : ECD_Q
 ClientSampleId : VCPS-B3-081324-10-18MS



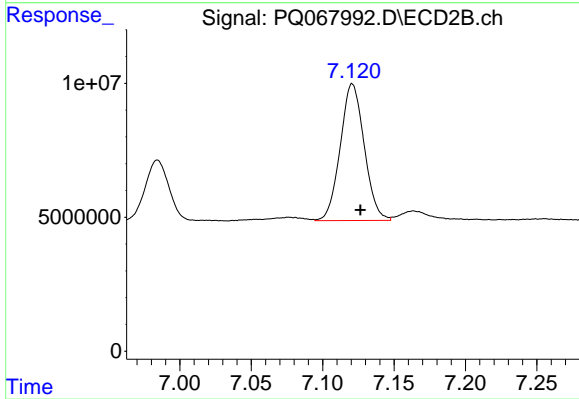
#43 AR-1268-3

R.T.: 6.832 min
 Delta R.T.: -0.005 min
 Response: 5029853
 Conc: 7.21 ng/ml



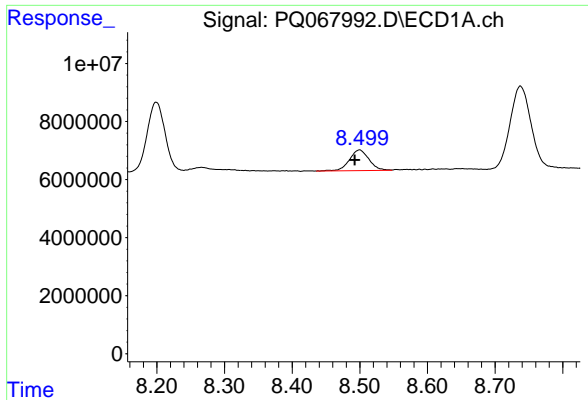
#44 AR-1268-4

R.T.: 8.199 min
 Delta R.T.: 0.006 min
 Response: 44239695
 Conc: 275.55 ng/ml



#44 AR-1268-4

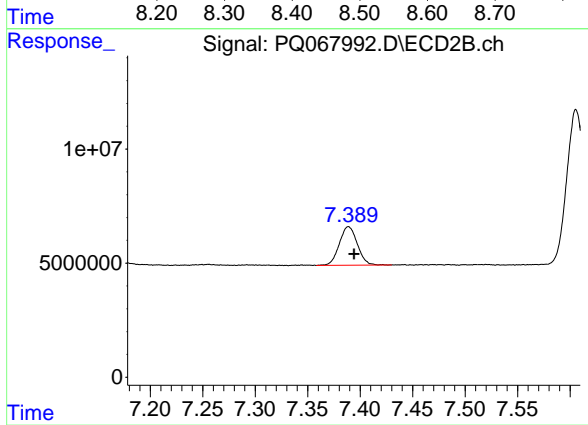
R.T.: 7.121 min
 Delta R.T.: -0.006 min
 Response: 59577692
 Conc: 253.46 ng/ml



#45 AR-1268-5

R.T.: 8.500 min
Delta R.T.: 0.007 min
Response: 14408411
Conc: 11.62 ng/ml

Instrument :
ECD_Q
ClientSampleId :
VCPS-B3-081324-10-18MS



#45 AR-1268-5

R.T.: 7.389 min
Delta R.T.: -0.005 min
Response: 20179678
Conc: 10.52 ng/ml