

Data Path : Z:\pestpcbsrv\HPCHEM1\ECD_Q\Data\PQ081618\
 Data File : PQ031235.D
 Signal(s) : Signal #1: ECD1A.ch Signal #2: ECD2B.ch
 Acq On : 16 Aug 2018 12:04
 Operator : SM\SJ
 Sample : J4424-11
 Misc :
 ALS Vial : 50 Sample Multiplier: 1

Instrument :
 ECD_Q
 ClientSampled :

Integration File signal 1: autoint1.e
 Integration File signal 2: autoint2.e
 Quant Time: Aug 16 17:09:44 2018
 Quant Method : Z:\pestpcbsrv\HPCHEM1\ECD_Q\Method\PQ080918CLP.M
 Quant Title : GC EXTRACTABLES
 QLast Update : Mon Aug 13 07:57:53 2018
 Response via : Initial Calibration
 Integrator: ChemStation

Volume Inj. : 1 µl
 Signal #1 Phase : ZB MR1 Signal #2 Phase: ZB MR2
 Signal #1 Info : 30Mx0.32mmx 0.5µm Signal #2 Info : 30M x 0.32mm x 0.25µm

Compound	RT#1	RT#2	Resp#1	Resp#2	ng/ml	ng/ml
System Monitoring Compounds						
1) SA Tetrachlo...	4.605	3.887	24992718	23369752	12.572	12.027
2) SA Decachlor...	10.460	8.972	81585856	81030186	41.024	36.763
Target Compounds						
4) L1 AR-1016-2	0.000	4.986	0	6066295	N.D.	83.419 #
5) L1 AR-1016-3	5.781	5.006	1179711	1894855	16.542	17.541
6) L1 AR-1016-4	5.805	5.006	2121572	1894855	31.531	26.416
7) L1 AR-1016-5	6.261	5.441	3776549	2372910	66.436	37.172 #
10) L2 AR-1221-3	0.000	4.329	0	7352495	N.D.	117.164 #
11) L3 AR-1232-1	5.805	0.000	2121572	0	47.088	N.D. #
12) L3 AR-1232-2	0.000	5.006	0	1894855	N.D.	46.102 #
13) L3 AR-1232-3	6.055	5.267	8286471	1503583	569.671	86.905 #
14) L3 AR-1232-4	6.638	5.592	165.9E6	1389619	5223.248	86.245 #
15) L3 AR-1232-5	6.705	5.835	6444173	4727132	220.948	222.050
17) L4 AR-1242-2	6.101	5.224	1485687	7505930	40.133	179.578 #
18) L4 AR-1242-3	6.261	5.224	3776549	7505930	201.854	229.041
19) L4 AR-1242-4	6.403	6.038	2862258	10723151	208.973	259.780
20) L4 AR-1242-5	6.403	6.038	2862258	10723151	61.243	305.599 #
21) L5 AR-1248-1	6.055	5.224	8286471	7505930	128.031	110.844
22) L5 AR-1248-2	6.638	5.795	165.9E6	155.6E6	2380.019	1140.645 #
23) L5 AR-1248-3	6.638	5.835	165.9E6	4727132	1826.092	51.043 #
24) L5 AR-1248-4	6.705	6.038	6444173	10723151	73.981	134.404 #
25) L5 AR-1248-5	6.905	6.362	6214260	694.6E6	107.897	9620.049 #
26) L6 AR-1254-1	6.855	5.940	245.1E6	226.0E6	1533.061	1594.810
27) L6 AR-1254-2	7.139	6.258	52748380	49479804	536.125	413.782
28) L6 AR-1254-3	7.225	6.575	125.6E6	40107295	702.209	225.580 #
29) L6 AR-1254-4	7.510	6.902	92954484	115.3E6	711.125	1075.494 #
30) L6 AR-1254-5	7.773	6.994	576.6E6	1437.4E6	5749.855	6515.190
31) L7 AR-1260-1	7.387	6.479	954.6E6	862.9E6	7620.867	5802.040
32) L7 AR-1260-2	7.644	6.663	1240.5E6	1212.7E6	8217.376	6804.444
33) L7 AR-1260-3	7.928	6.821	1577.1E6	1136.7E6	8778.653	6612.105
34) L7 AR-1260-4	8.235	7.293	1224.0E6	1101.4E6	9484.687	7963.727
35) L7 AR-1260-5	8.568	7.531	2588.7E6	2653.1E6	10050.727	8294.436
36) L8 AR-1262-1	7.281	6.362	576.0E6	694.6E6	7238.071	5825.261
37) L8 AR-1262-2	8.060	7.084	532.1E6	562.4E6	7229.835	5867.442
38) L8 AR-1262-3	8.320	7.391	571.4E6	604.1E6	6475.723	6275.320
39) L8 AR-1262-4	8.967	7.816	941.5E6	560.9E6	6232.486	3313.052 #
40) L8 AR-1262-5	9.674	8.388	652.0E6	617.7E6	6538.353	5401.078
41) L9 AR-1268-1	8.002	7.030	1001.3E6	1097.0E6	13661.466	12497.241
42) L9 AR-1268-2	8.235	7.881	1224.0E6	1954.5E6	12360.157	4087.354 #
43) L9 AR-1268-3	8.911	8.091	1670.0E6	20391894	3955.437	52.149 #
44) L9 AR-1268-4	9.227	8.185	21339072	20532787	67.360	210.214 #
45) L9 AR-1268-5	10.106	8.697	141.9E6	143.0E6	158.490	131.196

Data Path : Z:\pestpcbsrv\HPCHEM1\ECD_Q\Data\PQ081618\
Data File : PQ031235.D
Signal(s) : Signal #1: ECD1A.ch Signal #2: ECD2B.ch
Acq On : 16 Aug 2018 12:04
Operator : SM\SJ
Sample : J4424-11
Misc :
ALS Vial : 50 Sample Multiplier: 1

Instrument :
ECD_Q
ClientSampleId :

Integration File signal 1: autoint1.e
Integration File signal 2: autoint2.e
Quant Time: Aug 16 17:09:44 2018
Quant Method : Z:\pestpcbsrv\HPCHEM1\ECD_Q\Method\PQ080918CLP.M
Quant Title : GC EXTRACTABLES
QLast Update : Mon Aug 13 07:57:53 2018
Response via : Initial Calibration
Integrator: ChemStation

Volume Inj. : 1 µl
Signal #1 Phase : ZB MR1 Signal #2 Phase: ZB MR2
Signal #1 Info : 30Mx0.32mmx 0.5µm Signal #2 Info : 30M x 0.32mm x 0.25µm

Compound	RT#1	RT#2	Resp#1	Resp#2	ng/ml	ng/ml
----------	------	------	--------	--------	-------	-------

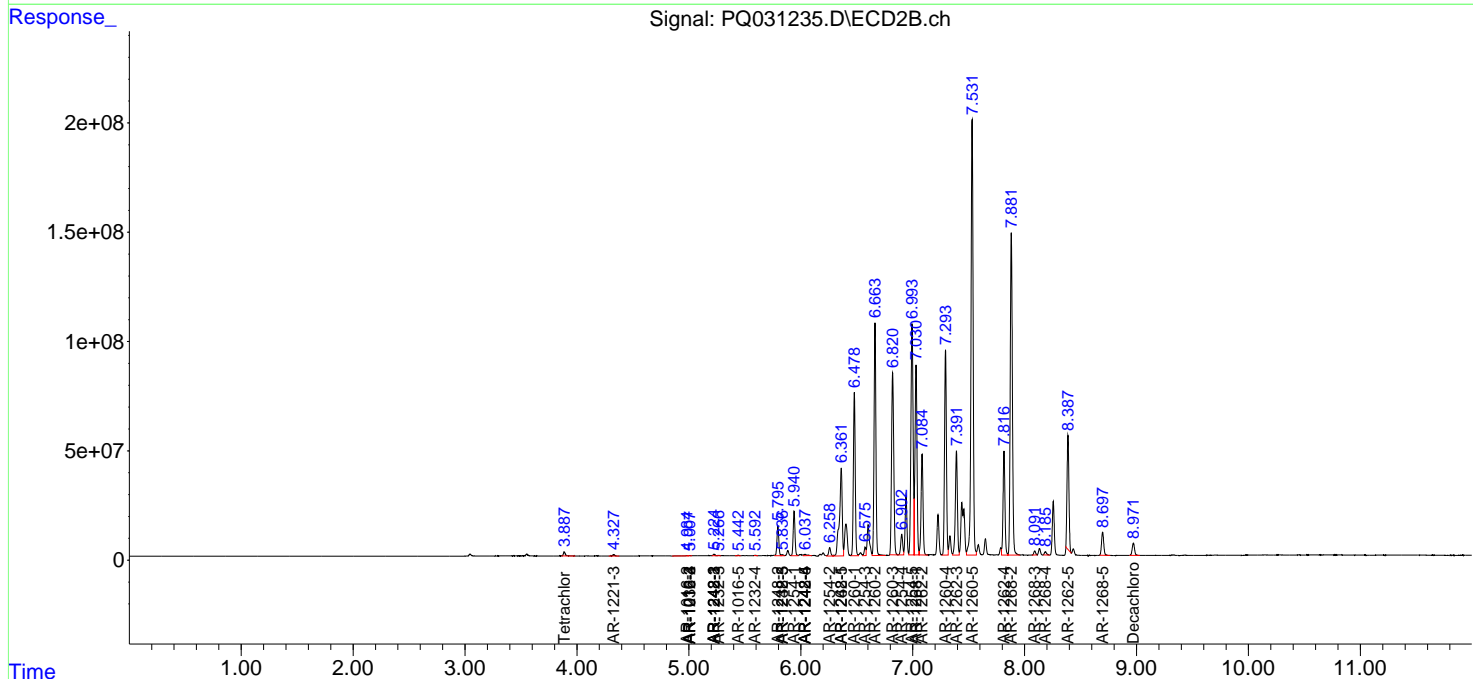
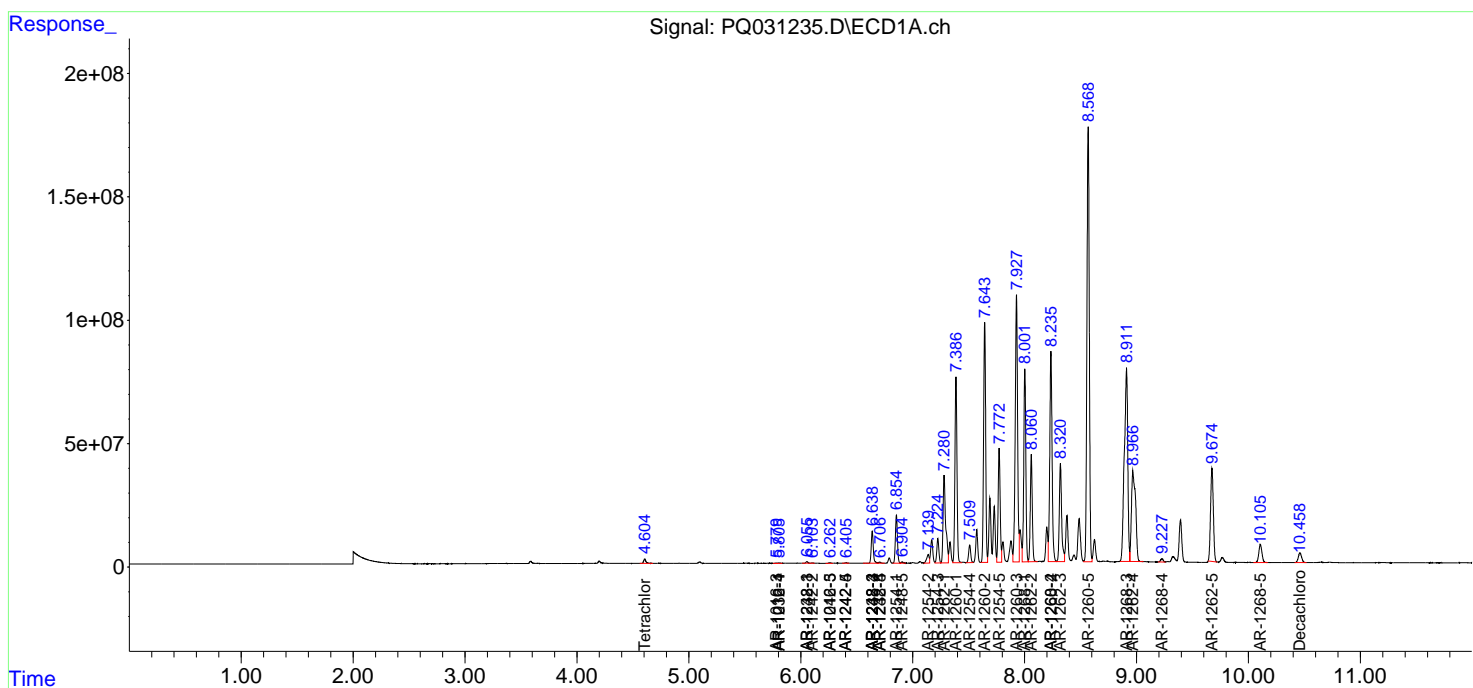
(f)=RT Delta > 1/2 Window (#)=Amounts differ by > 25% (m)=manual int.

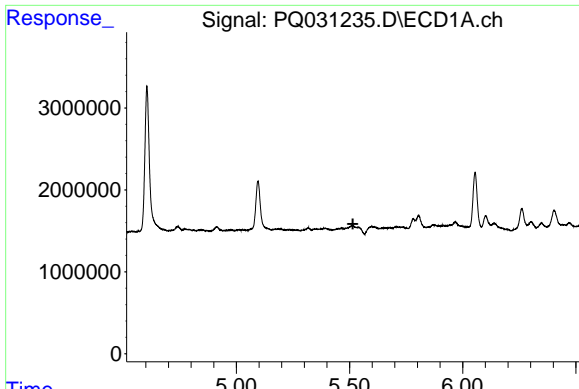
Data Path : Z:\pestpcbsrv\HPCHEM1\ECD_Q\Data\PQ081618\
 Data File : PQ031235.D
 Signal(s) : Signal #1: ECD1A.ch Signal #2: ECD2B.ch
 Acq On : 16 Aug 2018 12:04
 Operator : SM\SJ
 Sample : J4424-11
 Misc :
 ALS Vial : 50 Sample Multiplier: 1

Instrument :
 ECD_Q
 ClientSampled :

Integration File signal 1: autoint1.e
 Integration File signal 2: autoint2.e
 Quant Time: Aug 16 17:09:44 2018
 Quant Method : Z:\pestpcbsrv\HPCHEM1\ECD_Q\Method\PQ080918CLP.M
 Quant Title : GC EXTRACTABLES
 QLast Update : Mon Aug 13 07:57:53 2018
 Response via : Initial Calibration
 Integrator: ChemStation

Volume Inj. : 1 µl
 Signal #1 Phase : ZB MR1 Signal #2 Phase: ZB MR2
 Signal #1 Info : 30Mx0.32mmx 0.5µm Signal #2 Info : 30M x 0.32mm x 0.25µm

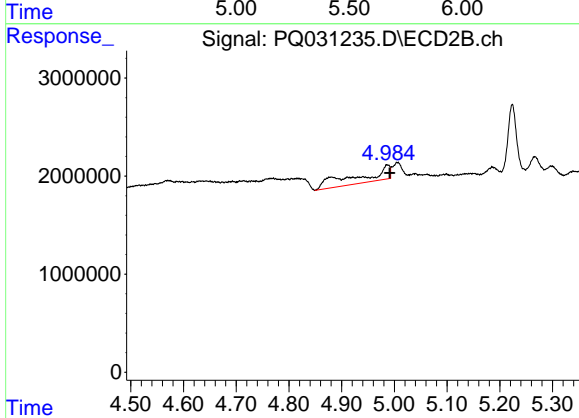




#4 AR-1016-2

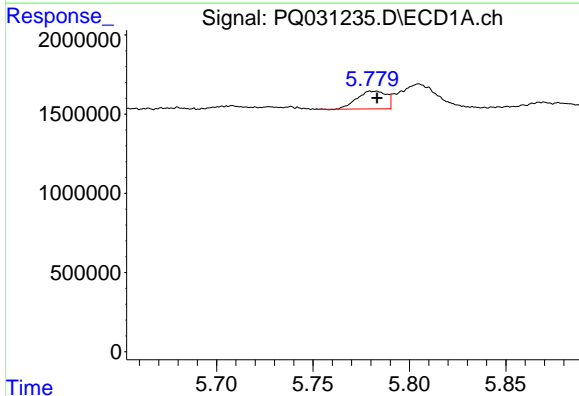
R.T.: 0.000 min
 Exp R.T.: 5.515 min
 Response: 0
 Conc: N.D.

Instrument :
 ECD_Q
 ClientSampled :



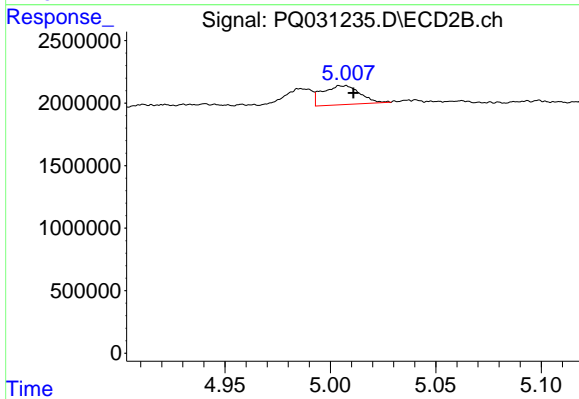
#4 AR-1016-2

R.T.: 4.986 min
 Delta R.T.: -0.005 min
 Response: 6066295
 Conc: 83.42 ng/ml



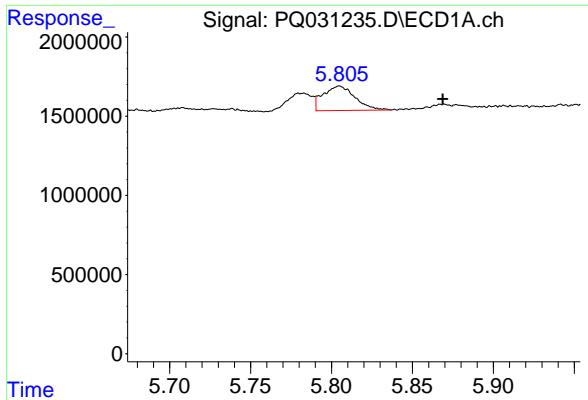
#5 AR-1016-3

R.T.: 5.781 min
 Delta R.T.: -0.002 min
 Response: 1179711
 Conc: 16.54 ng/ml



#5 AR-1016-3

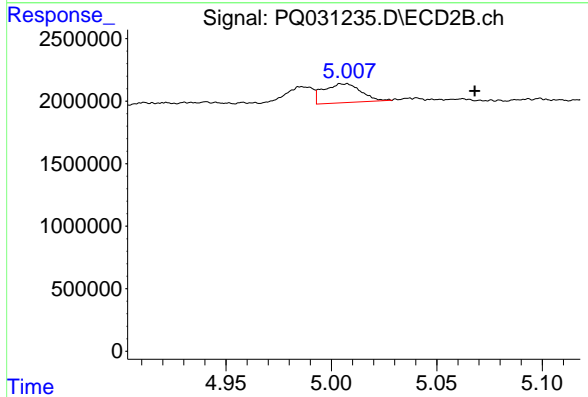
R.T.: 5.006 min
 Delta R.T.: -0.005 min
 Response: 1894855
 Conc: 17.54 ng/ml



#6 AR-1016-4

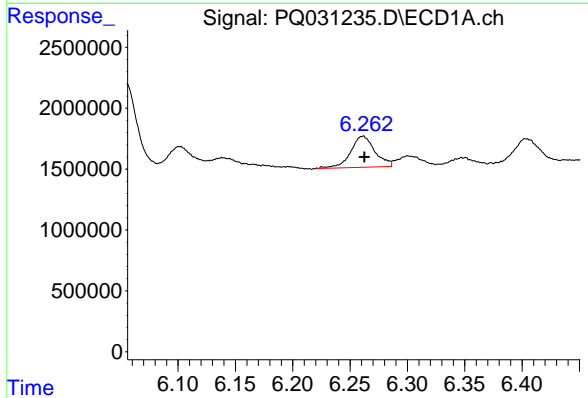
R.T.: 5.805 min
 Delta R.T.: -0.064 min
 Response: 2121572
 Conc: 31.53 ng/ml

Instrument :
 ECD_Q
 ClientSampleId :



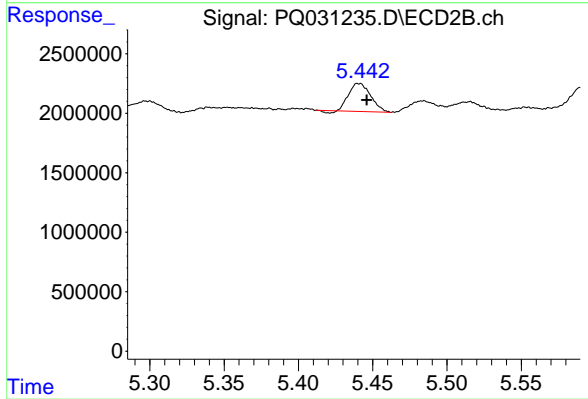
#6 AR-1016-4

R.T.: 5.006 min
 Delta R.T.: -0.062 min
 Response: 1894855
 Conc: 26.42 ng/ml



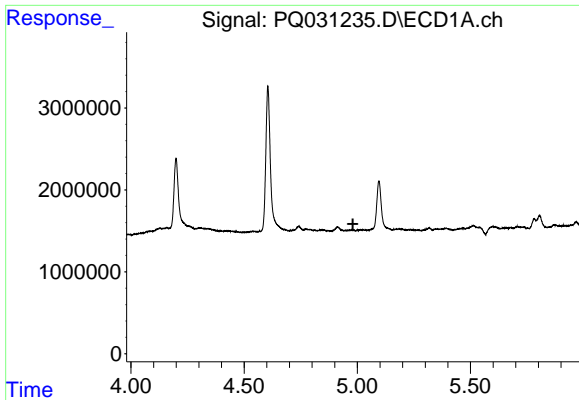
#7 AR-1016-5

R.T.: 6.261 min
 Delta R.T.: -0.001 min
 Response: 3776549
 Conc: 66.44 ng/ml



#7 AR-1016-5

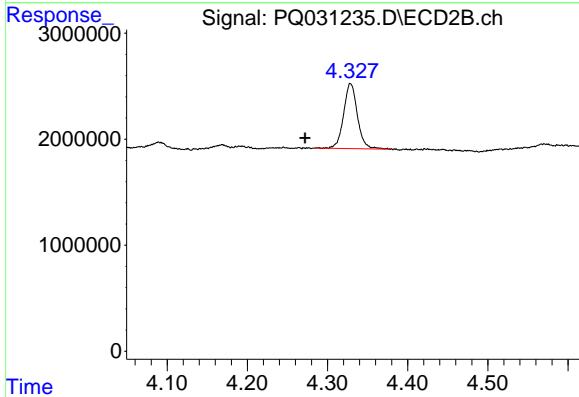
R.T.: 5.441 min
 Delta R.T.: -0.005 min
 Response: 2372910
 Conc: 37.17 ng/ml



#10 AR-1221-3

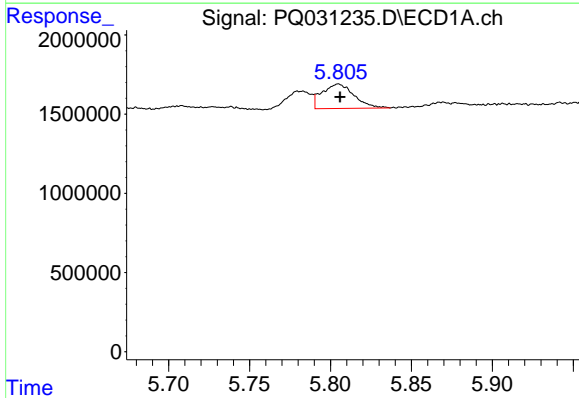
R.T.: 0.000 min
 Exp R.T.: 4.980 min
 Response: 0
 Conc: N.D.

Instrument :
 ECD_Q
 ClientSampleId :



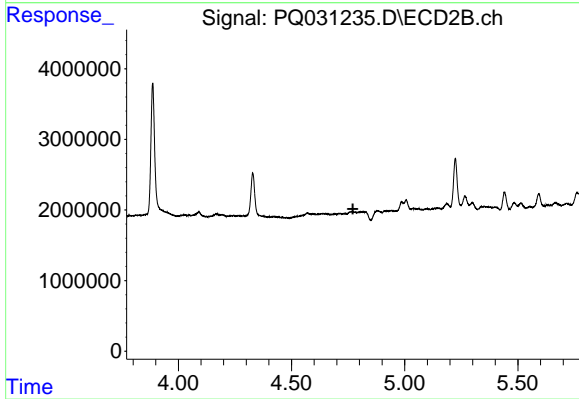
#10 AR-1221-3

R.T.: 4.329 min
 Delta R.T.: 0.057 min
 Response: 7352495
 Conc: 117.16 ng/ml



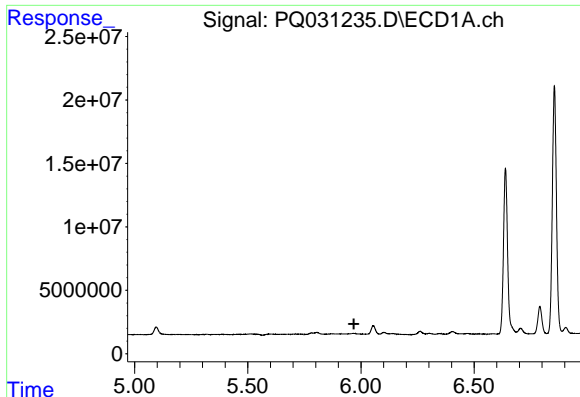
#11 AR-1232-1

R.T.: 5.805 min
 Delta R.T.: 0.000 min
 Response: 2121572
 Conc: 47.09 ng/ml



#11 AR-1232-1

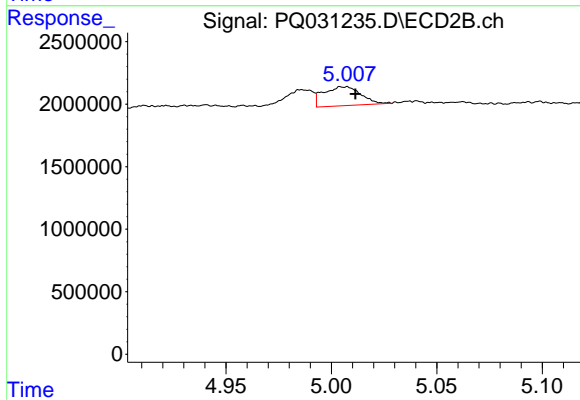
R.T.: 0.000 min
 Exp R.T.: 4.771 min
 Response: 0
 Conc: N.D.



#12 AR-1232-2

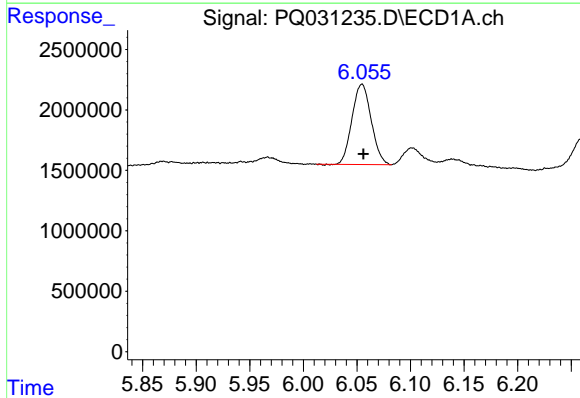
R.T.: 0.000 min
 Exp R.T.: 5.969 min
 Response: 0
 Conc: N.D.

Instrument :
 ECD_Q
 ClientSampled :



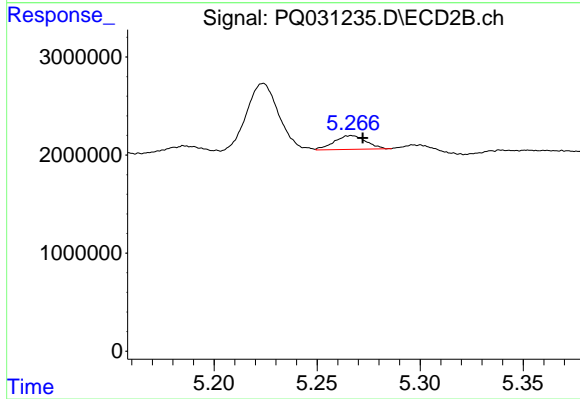
#12 AR-1232-2

R.T.: 5.006 min
 Delta R.T.: -0.006 min
 Response: 1894855
 Conc: 46.10 ng/ml



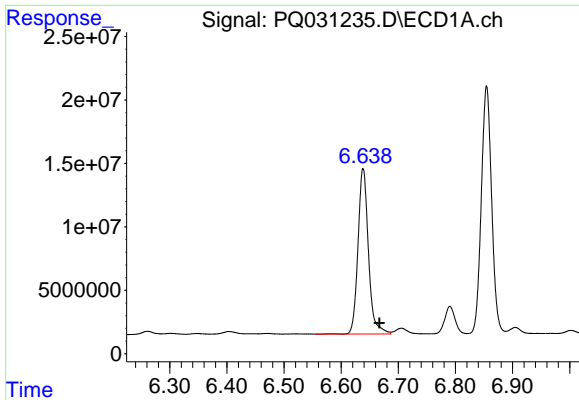
#13 AR-1232-3

R.T.: 6.055 min
 Delta R.T.: -0.001 min
 Response: 8286471
 Conc: 569.67 ng/ml



#13 AR-1232-3

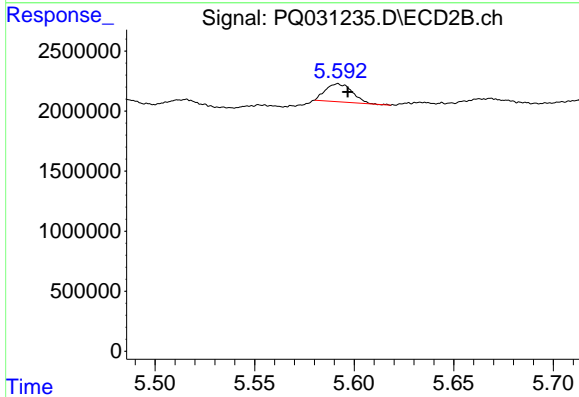
R.T.: 5.267 min
 Delta R.T.: -0.006 min
 Response: 1503583
 Conc: 86.90 ng/ml



#14 AR-1232-4

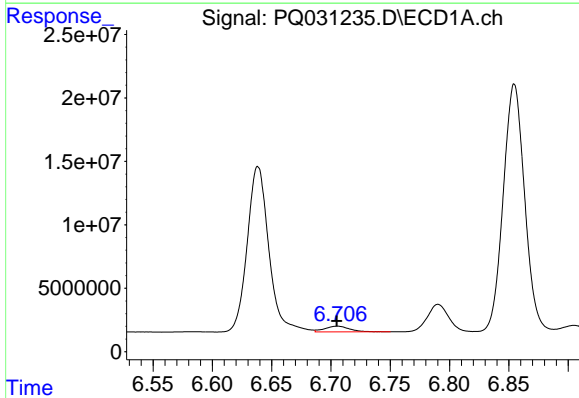
R.T.: 6.638 min
 Delta R.T.: -0.029 min
 Response: 165893344
 Conc: 5223.25 ng/ml

Instrument :
 ECD_Q
 ClientSampleId :



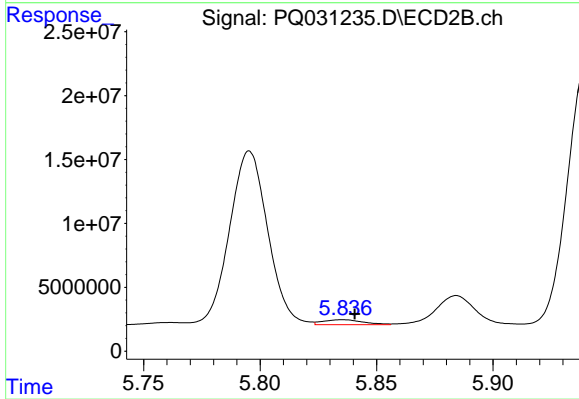
#14 AR-1232-4

R.T.: 5.592 min
 Delta R.T.: -0.005 min
 Response: 1389619
 Conc: 86.25 ng/ml



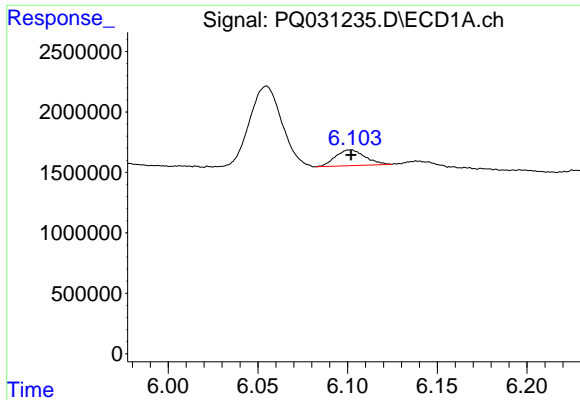
#15 AR-1232-5

R.T.: 6.705 min
 Delta R.T.: 0.000 min
 Response: 6444173
 Conc: 220.95 ng/ml



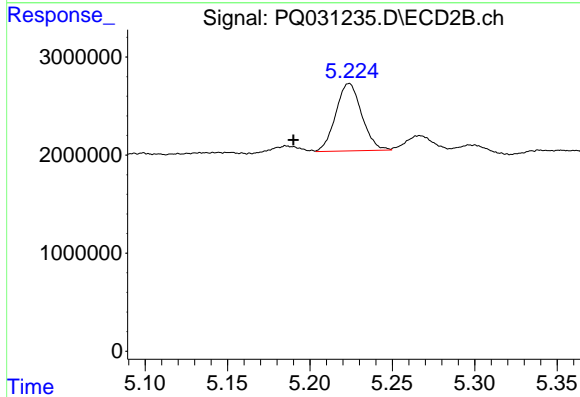
#15 AR-1232-5

R.T.: 5.835 min
 Delta R.T.: -0.005 min
 Response: 4727132
 Conc: 222.05 ng/ml

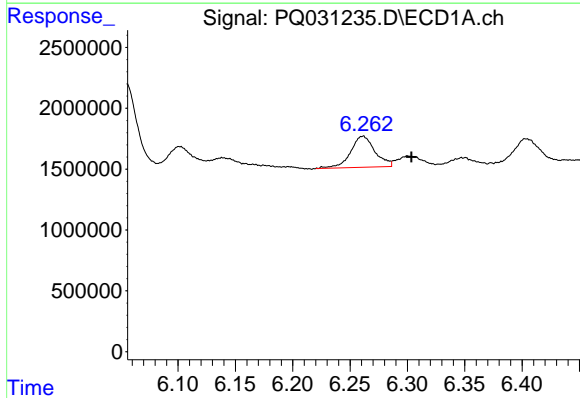


#17 AR-1242-2
 R.T.: 6.101 min
 Delta R.T.: 0.000 min
 Response: 1485687
 Conc: 40.13 ng/ml

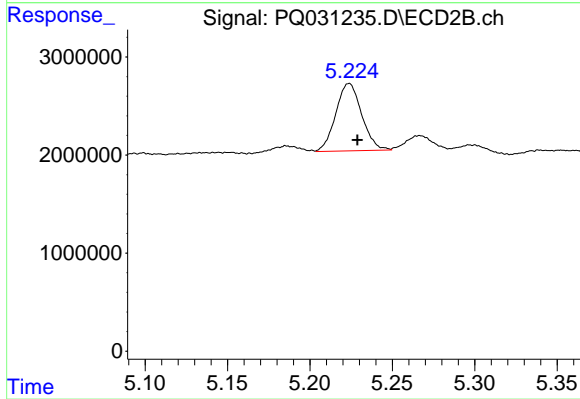
Instrument :
 ECD_Q
 ClientSampleId :



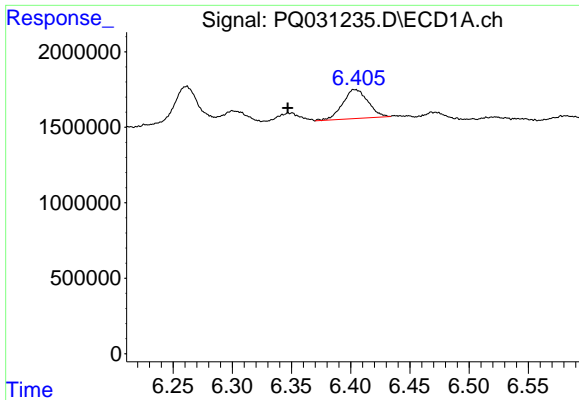
#17 AR-1242-2
 R.T.: 5.224 min
 Delta R.T.: 0.034 min
 Response: 7505930
 Conc: 179.58 ng/ml



#18 AR-1242-3
 R.T.: 6.261 min
 Delta R.T.: -0.042 min
 Response: 3776549
 Conc: 201.85 ng/ml

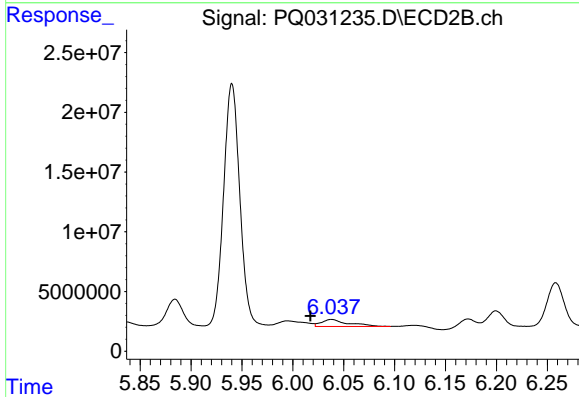


#18 AR-1242-3
 R.T.: 5.224 min
 Delta R.T.: -0.005 min
 Response: 7505930
 Conc: 229.04 ng/ml

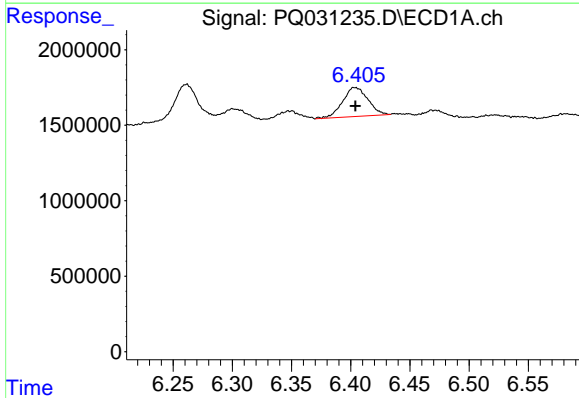


#19 AR-1242-4
 R.T.: 6.403 min
 Delta R.T.: 0.057 min
 Response: 2862258
 Conc: 208.97 ng/ml

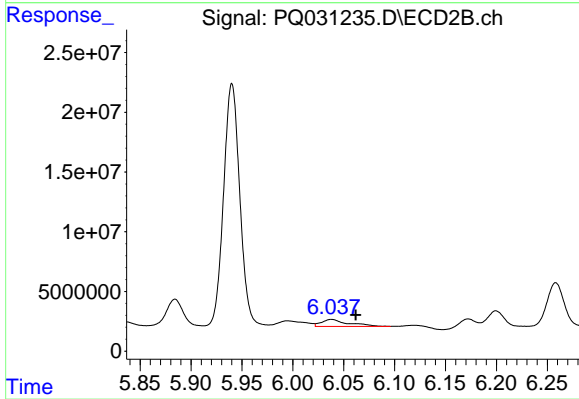
Instrument :
 ECD_Q
 ClientSampled :



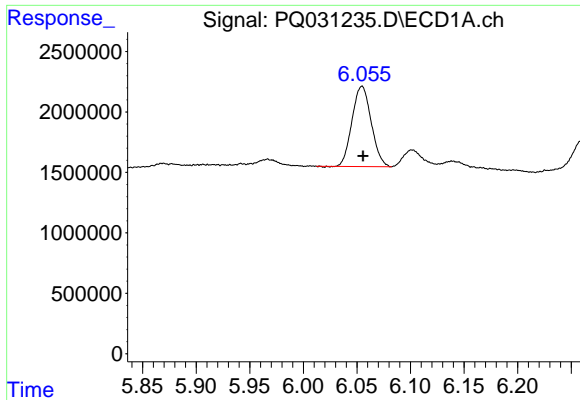
#19 AR-1242-4
 R.T.: 6.038 min
 Delta R.T.: 0.021 min
 Response: 10723151
 Conc: 259.78 ng/ml



#20 AR-1242-5
 R.T.: 6.403 min
 Delta R.T.: 0.000 min
 Response: 2862258
 Conc: 61.24 ng/ml



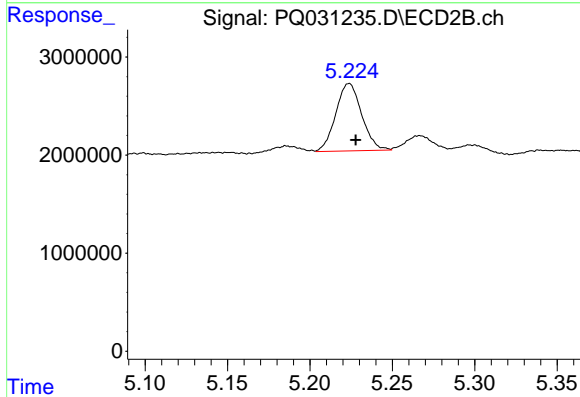
#20 AR-1242-5
 R.T.: 6.038 min
 Delta R.T.: -0.024 min
 Response: 10723151
 Conc: 305.60 ng/ml



#21 AR-1248-1

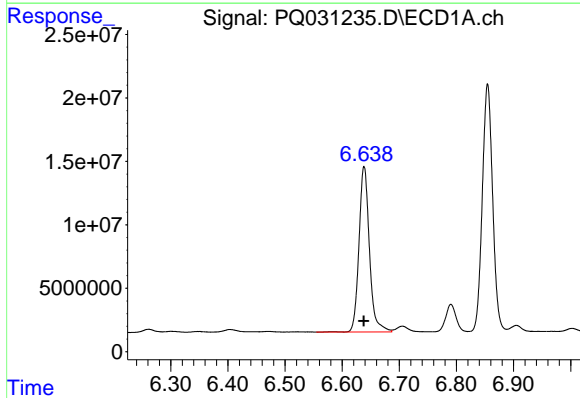
R.T.: 6.055 min
 Delta R.T.: -0.001 min
 Response: 8286471
 Conc: 128.03 ng/ml

Instrument :
 ECD_Q
 ClientSampleId :



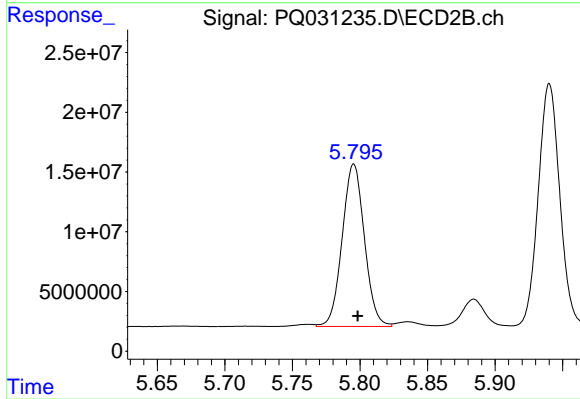
#21 AR-1248-1

R.T.: 5.224 min
 Delta R.T.: -0.004 min
 Response: 7505930
 Conc: 110.84 ng/ml



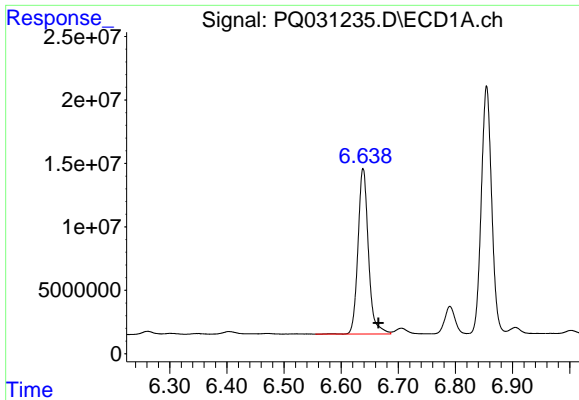
#22 AR-1248-2

R.T.: 6.638 min
 Delta R.T.: 0.000 min
 Response: 165893344
 Conc: 2380.02 ng/ml



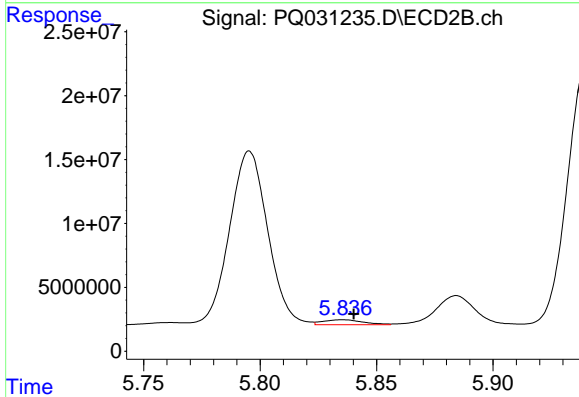
#22 AR-1248-2

R.T.: 5.795 min
 Delta R.T.: -0.003 min
 Response: 155616285
 Conc: 1140.65 ng/ml

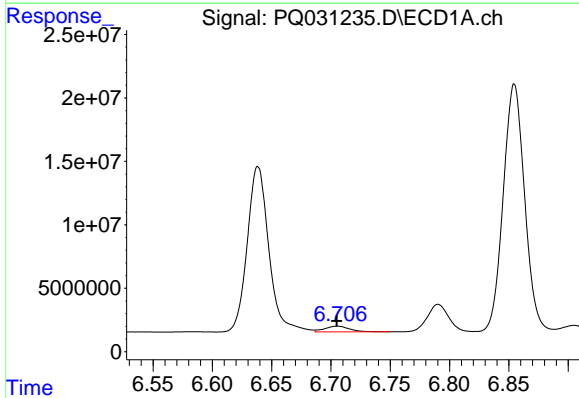


#23 AR-1248-3
 R.T.: 6.638 min
 Delta R.T.: -0.027 min
 Response: 165893344
 Conc: 1826.09 ng/ml

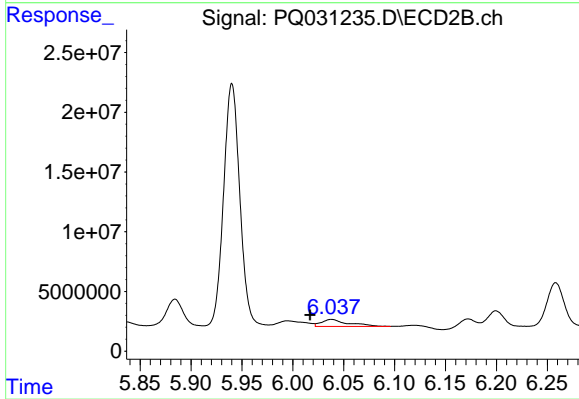
Instrument :
 ECD_Q
 ClientSampleId :



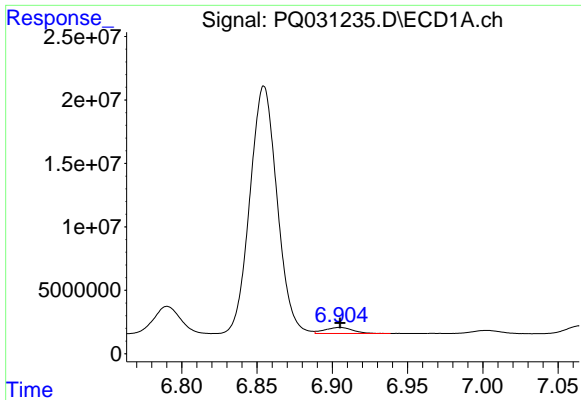
#23 AR-1248-3
 R.T.: 5.835 min
 Delta R.T.: -0.005 min
 Response: 4727132
 Conc: 51.04 ng/ml



#24 AR-1248-4
 R.T.: 6.705 min
 Delta R.T.: 0.000 min
 Response: 6444173
 Conc: 73.98 ng/ml

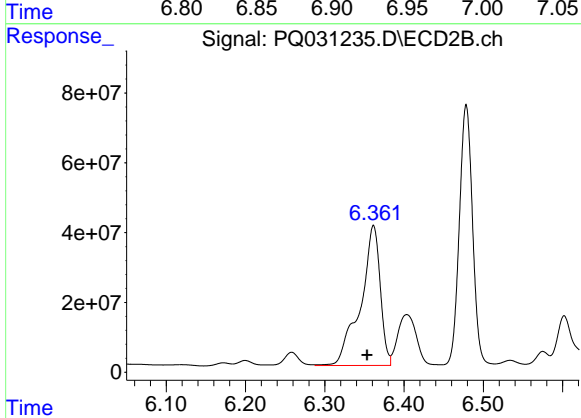


#24 AR-1248-4
 R.T.: 6.038 min
 Delta R.T.: 0.021 min
 Response: 10723151
 Conc: 134.40 ng/ml

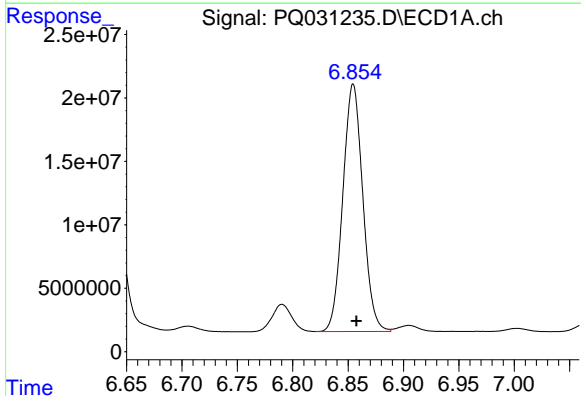


#25 AR-1248-5
 R.T.: 6.905 min
 Delta R.T.: 0.000 min
 Response: 6214260
 Conc: 107.90 ng/ml

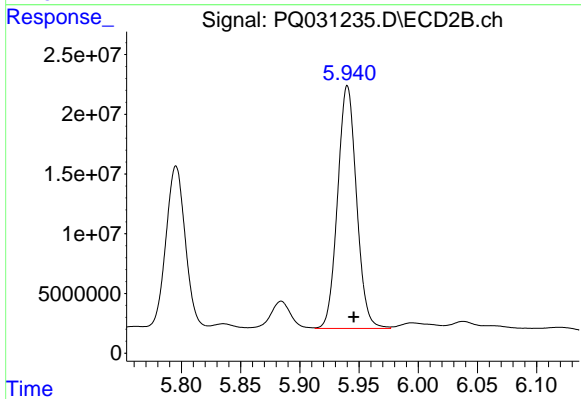
Instrument :
 ECD_Q
 ClientSampled :



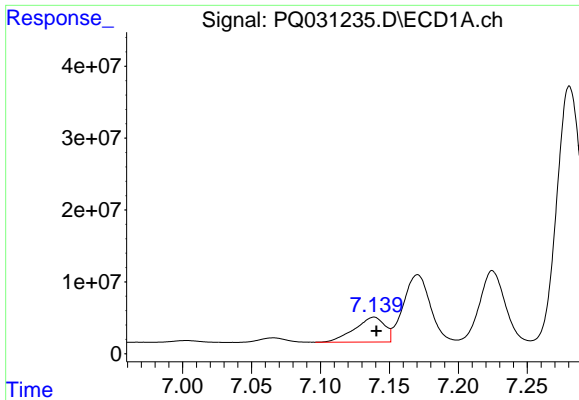
#25 AR-1248-5
 R.T.: 6.362 min
 Delta R.T.: 0.008 min
 Response: 694623040
 Conc: 9620.05 ng/ml



#26 AR-1254-1
 R.T.: 6.855 min
 Delta R.T.: -0.003 min
 Response: 245117034
 Conc: 1533.06 ng/ml



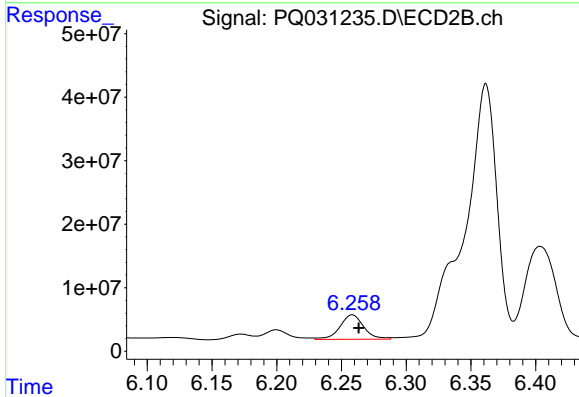
#26 AR-1254-1
 R.T.: 5.940 min
 Delta R.T.: -0.005 min
 Response: 225960337
 Conc: 1594.81 ng/ml



#27 AR-1254-2

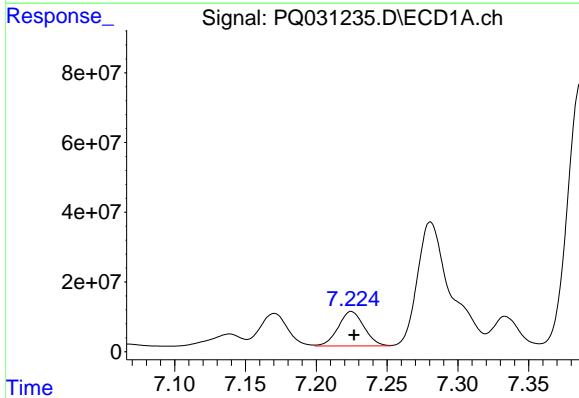
R.T.: 7.139 min
Delta R.T.: -0.002 min
Response: 52748380
Conc: 536.13 ng/ml

Instrument :
ECD_Q
ClientSampled :



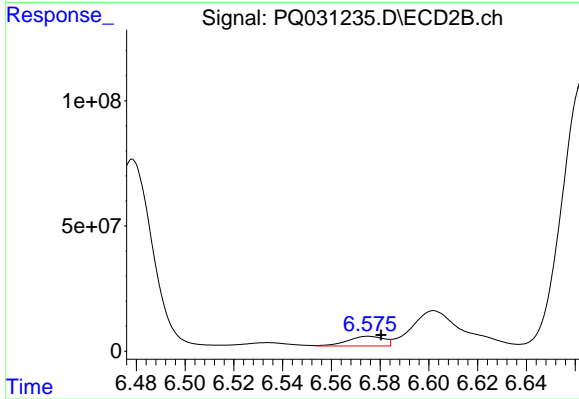
#27 AR-1254-2

R.T.: 6.258 min
Delta R.T.: -0.005 min
Response: 49479804
Conc: 413.78 ng/ml



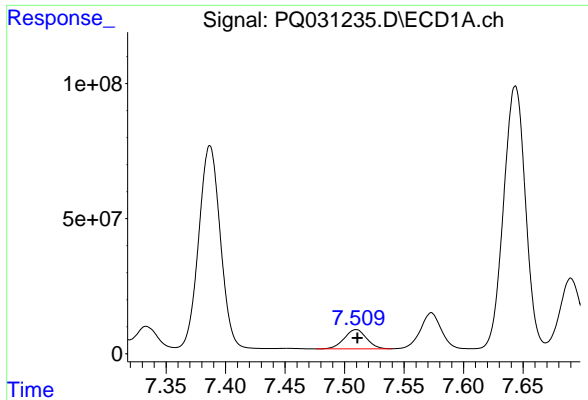
#28 AR-1254-3

R.T.: 7.225 min
Delta R.T.: -0.002 min
Response: 125554377
Conc: 702.21 ng/ml



#28 AR-1254-3

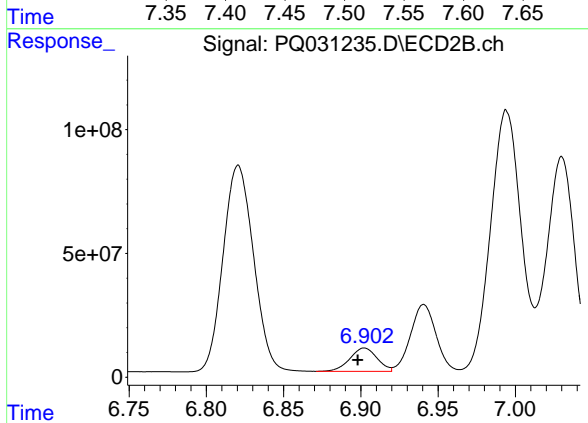
R.T.: 6.575 min
Delta R.T.: -0.005 min
Response: 40107295
Conc: 225.58 ng/ml



#29 AR-1254-4

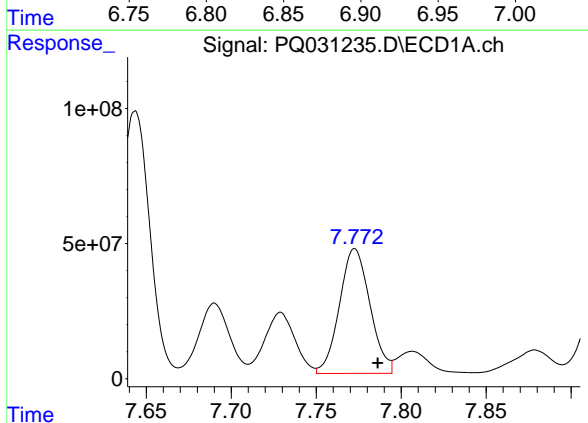
R.T.: 7.510 min
 Delta R.T.: -0.001 min
 Response: 92954484
 Conc: 711.13 ng/ml

Instrument :
 ECD_Q
 ClientSampled :



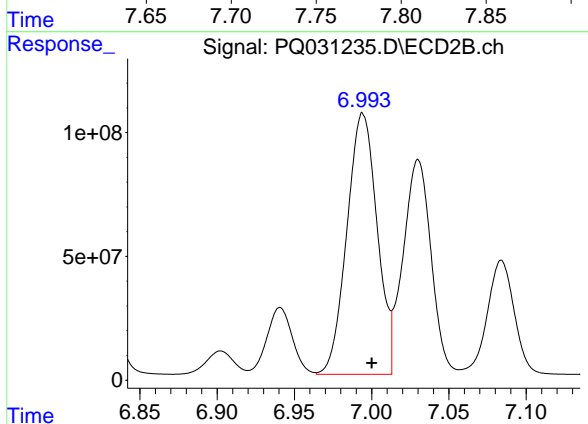
#29 AR-1254-4

R.T.: 6.902 min
 Delta R.T.: 0.004 min
 Response: 115287847
 Conc: 1075.49 ng/ml



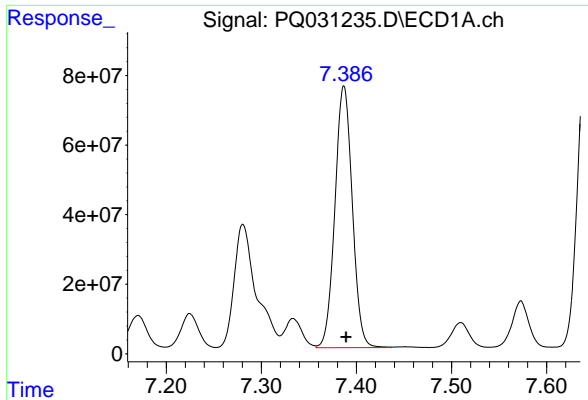
#30 AR-1254-5

R.T.: 7.773 min
 Delta R.T.: -0.013 min
 Response: 576613470
 Conc: 5749.85 ng/ml



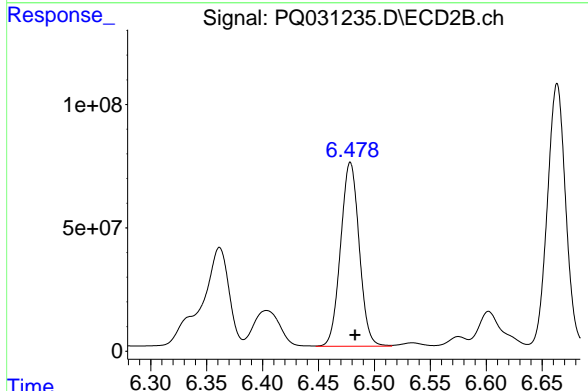
#30 AR-1254-5

R.T.: 6.994 min
 Delta R.T.: -0.006 min
 Response: 1437359642
 Conc: 6515.19 ng/ml

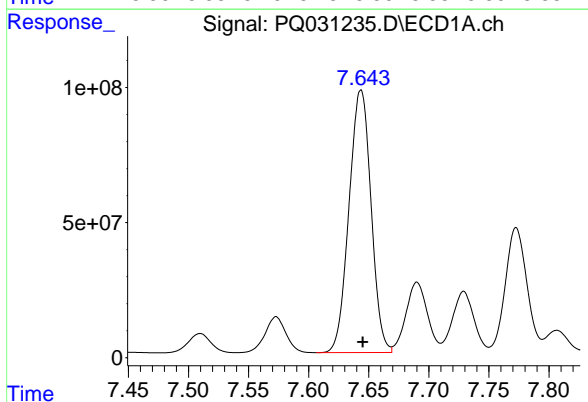


#31 AR-1260-1
 R.T.: 7.387 min
 Delta R.T.: -0.002 min
 Response: 954593094
 Conc: 7620.87 ng/ml

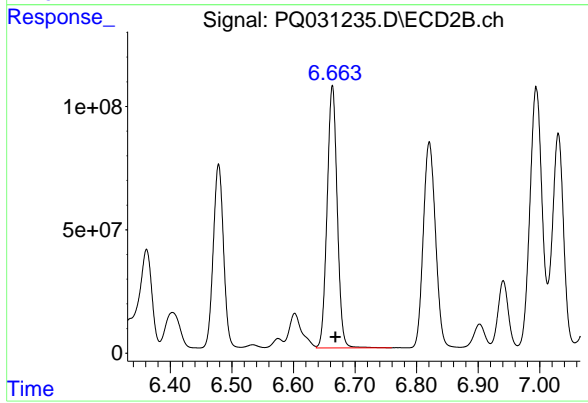
Instrument :
 ECD_Q
 ClientSampleId :



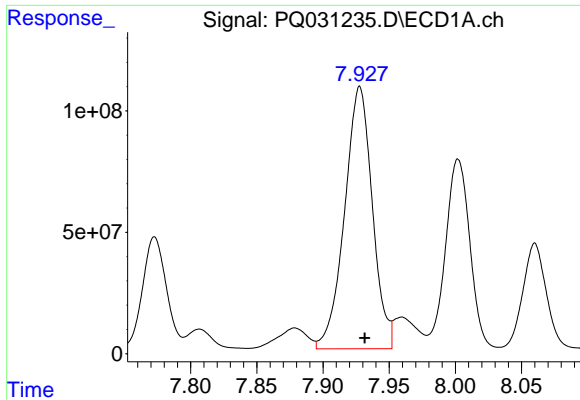
#31 AR-1260-1
 R.T.: 6.479 min
 Delta R.T.: -0.004 min
 Response: 862897646
 Conc: 5802.04 ng/ml



#32 AR-1260-2
 R.T.: 7.644 min
 Delta R.T.: -0.002 min
 Response: 1240480805
 Conc: 8217.38 ng/ml



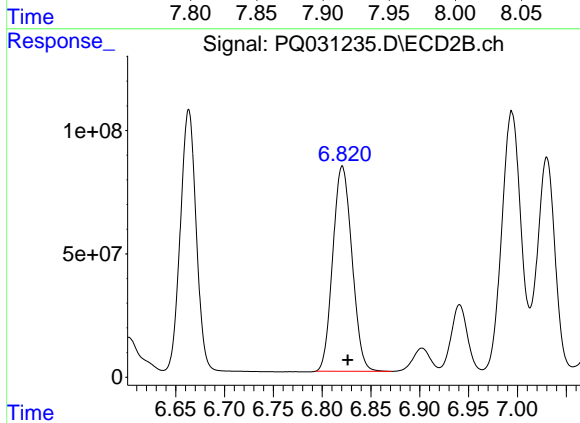
#32 AR-1260-2
 R.T.: 6.663 min
 Delta R.T.: -0.005 min
 Response: 1212653591
 Conc: 6804.44 ng/ml



#33 AR-1260-3

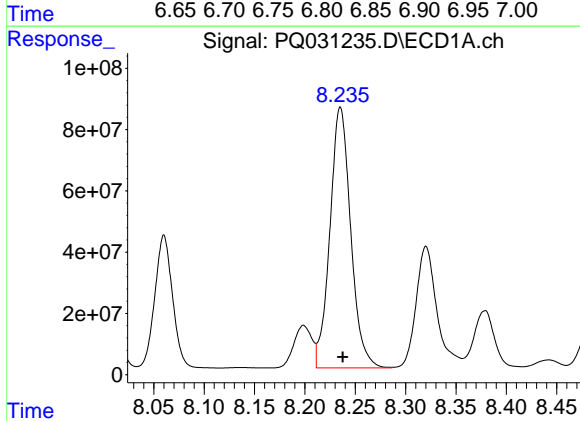
R.T.: 7.928 min
 Delta R.T.: -0.004 min
 Response: 1577096003
 Conc: 8778.65 ng/ml

Instrument :
 ECD_Q
 ClientSampleId :



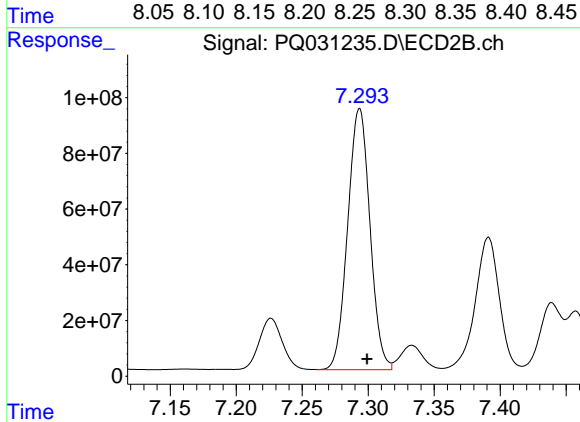
#33 AR-1260-3

R.T.: 6.821 min
 Delta R.T.: -0.006 min
 Response: 1136653532
 Conc: 6612.10 ng/ml



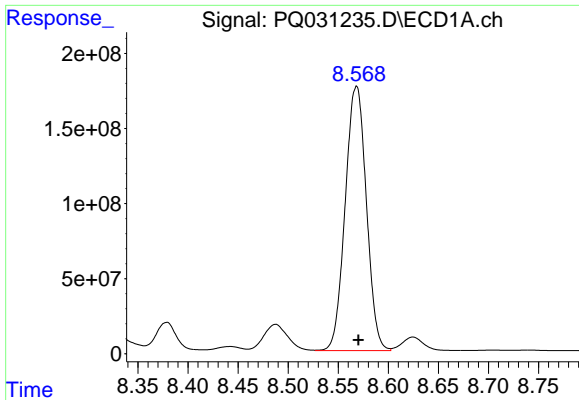
#34 AR-1260-4

R.T.: 8.235 min
 Delta R.T.: -0.002 min
 Response: 1223989960
 Conc: 9484.69 ng/ml



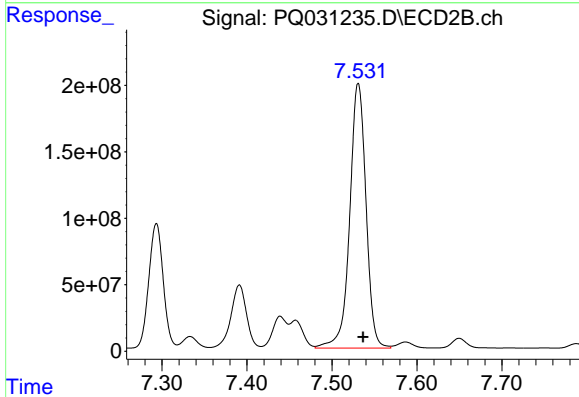
#34 AR-1260-4

R.T.: 7.293 min
 Delta R.T.: -0.006 min
 Response: 1101350232
 Conc: 7963.73 ng/ml

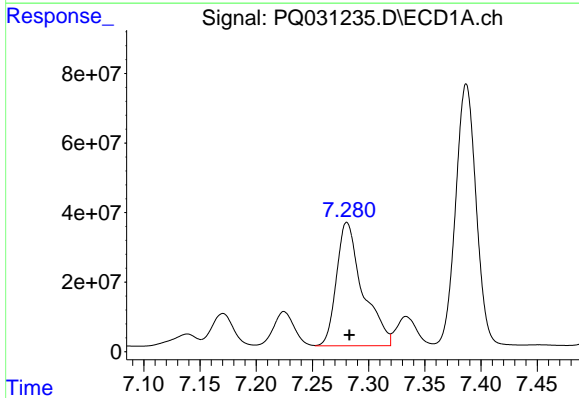


#35 AR-1260-5
 R.T.: 8.568 min
 Delta R.T.: -0.002 min
 Response: 2588731606
 Conc: 10050.73 ng/ml

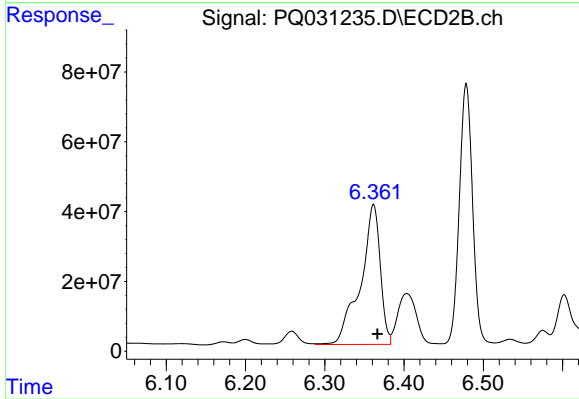
Instrument :
 ECD_Q
 ClientSampled :



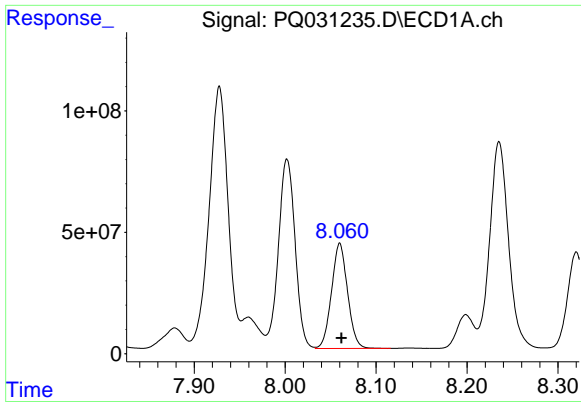
#35 AR-1260-5
 R.T.: 7.531 min
 Delta R.T.: -0.006 min
 Response: 2653058156
 Conc: 8294.44 ng/ml



#36 AR-1262-1
 R.T.: 7.281 min
 Delta R.T.: -0.002 min
 Response: 576008105
 Conc: 7238.07 ng/ml



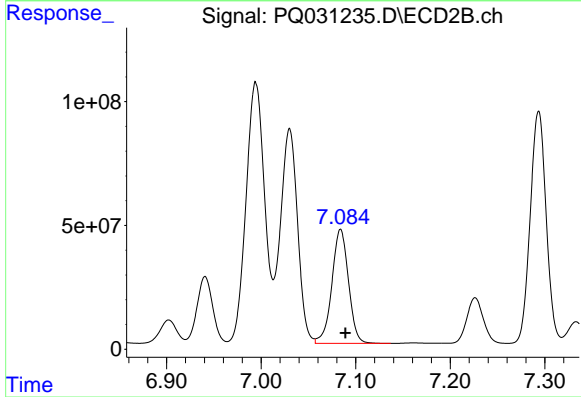
#36 AR-1262-1
 R.T.: 6.362 min
 Delta R.T.: -0.005 min
 Response: 694623040
 Conc: 5825.26 ng/ml



#37 AR-1262-2

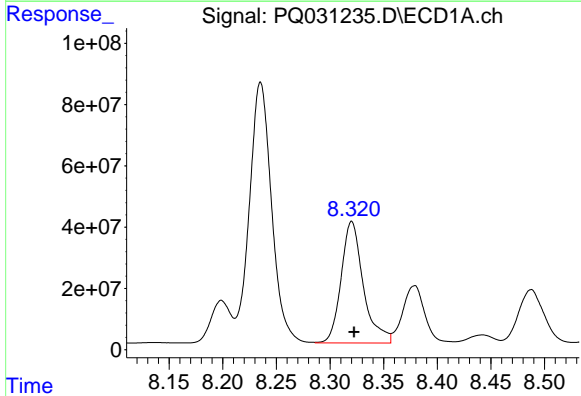
R.T.: 8.060 min
 Delta R.T.: -0.002 min
 Response: 532145815
 Conc: 7229.83 ng/ml

Instrument :
 ECD_Q
 ClientSampled :



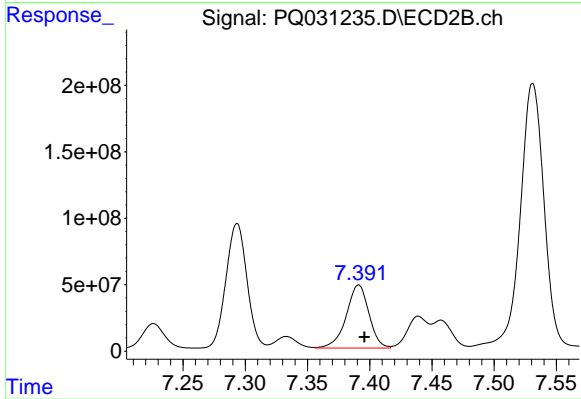
#37 AR-1262-2

R.T.: 7.084 min
 Delta R.T.: -0.005 min
 Response: 562419596
 Conc: 5867.44 ng/ml



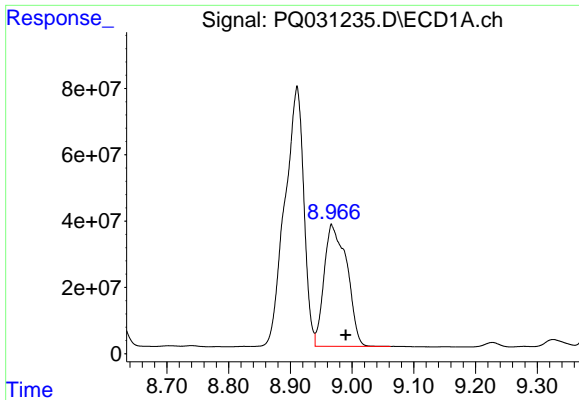
#38 AR-1262-3

R.T.: 8.320 min
 Delta R.T.: -0.002 min
 Response: 571419743
 Conc: 6475.72 ng/ml



#38 AR-1262-3

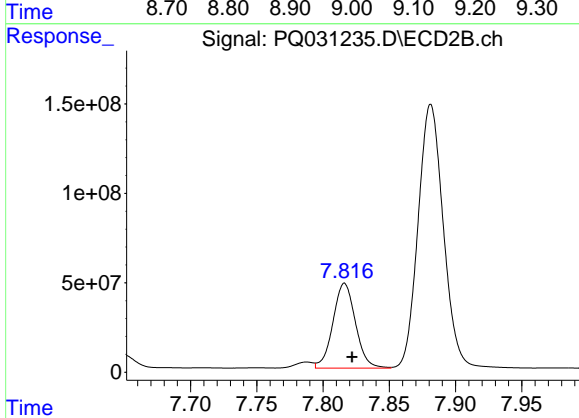
R.T.: 7.391 min
 Delta R.T.: -0.005 min
 Response: 604092220
 Conc: 6275.32 ng/ml



#39 AR-1262-4

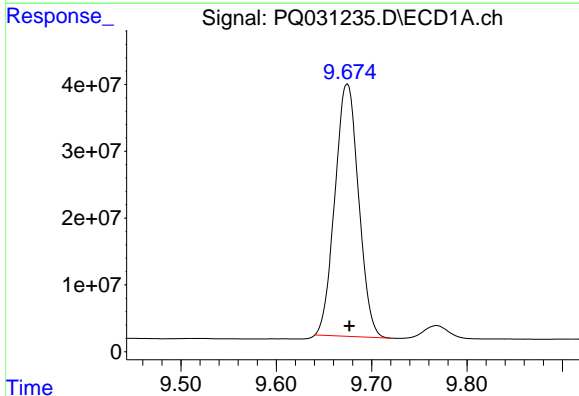
R.T.: 8.967 min
Delta R.T.: -0.023 min
Response: 941531650
Conc: 6232.49 ng/ml

Instrument :
ECD_Q
ClientSampled :



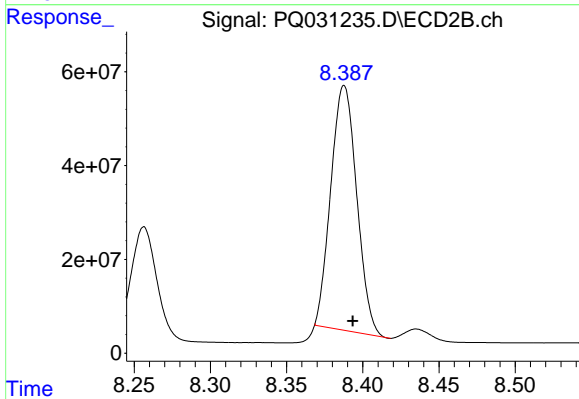
#39 AR-1262-4

R.T.: 7.816 min
Delta R.T.: -0.006 min
Response: 560890839
Conc: 3313.05 ng/ml



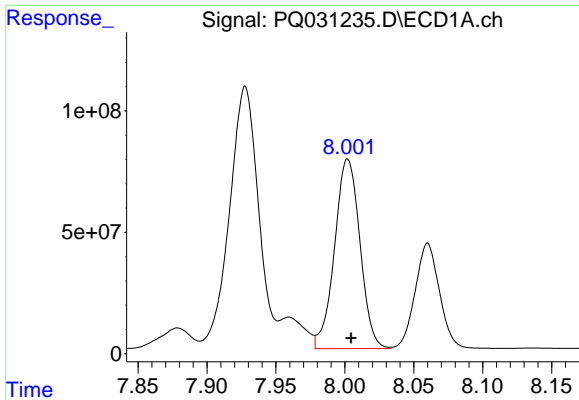
#40 AR-1262-5

R.T.: 9.674 min
Delta R.T.: -0.002 min
Response: 651975793
Conc: 6538.35 ng/ml



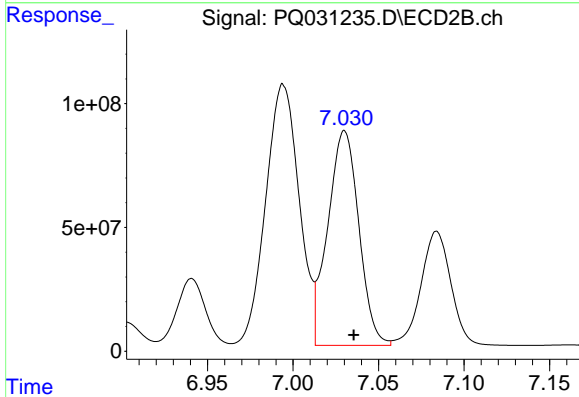
#40 AR-1262-5

R.T.: 8.388 min
Delta R.T.: -0.006 min
Response: 617720423
Conc: 5401.08 ng/ml

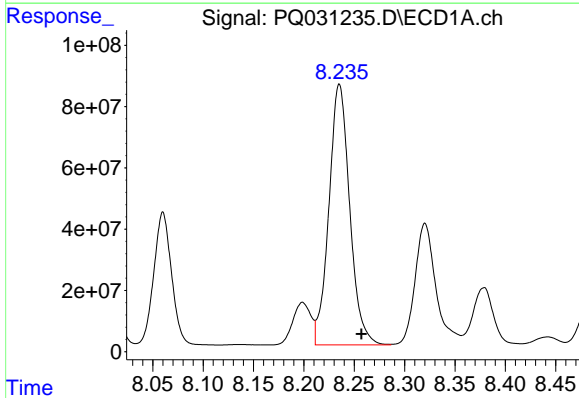


#41 AR-1268-1
 R.T.: 8.002 min
 Delta R.T.: -0.002 min
 Response: 1001273526
 Conc: 13661.47 ng/ml

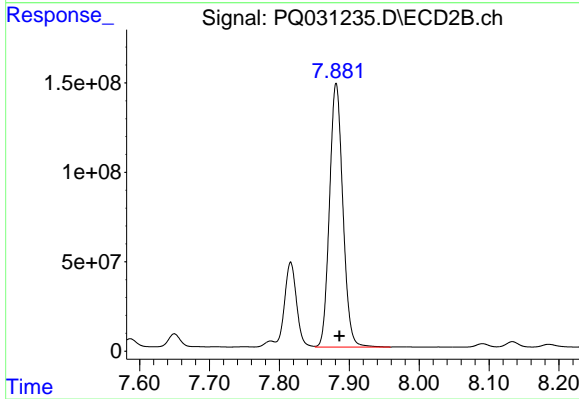
Instrument :
 ECD_Q
 ClientSampled :



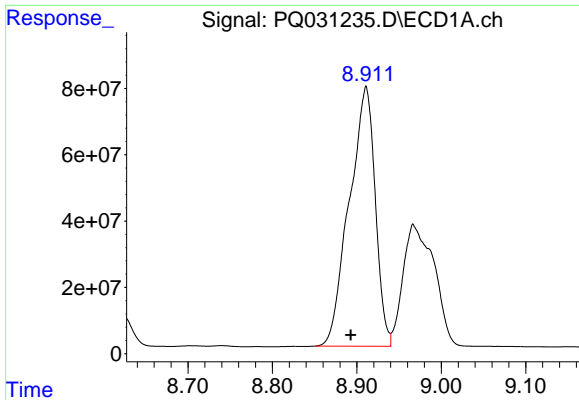
#41 AR-1268-1
 R.T.: 7.030 min
 Delta R.T.: -0.005 min
 Response: 1096981188
 Conc: 12497.24 ng/ml



#42 AR-1268-2
 R.T.: 8.235 min
 Delta R.T.: -0.022 min
 Response: 1223989960
 Conc: 12360.16 ng/ml



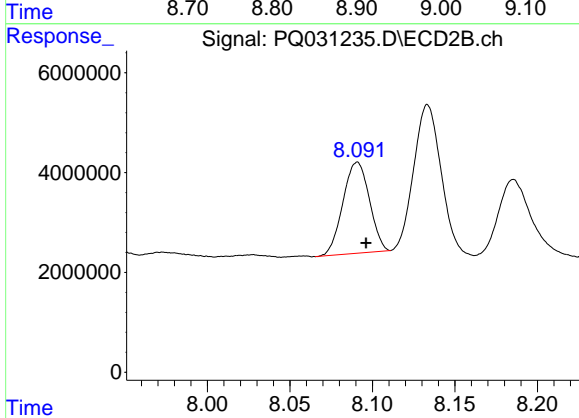
#42 AR-1268-2
 R.T.: 7.881 min
 Delta R.T.: -0.004 min
 Response: 1954537248
 Conc: 4087.35 ng/ml



#43 AR-1268-3

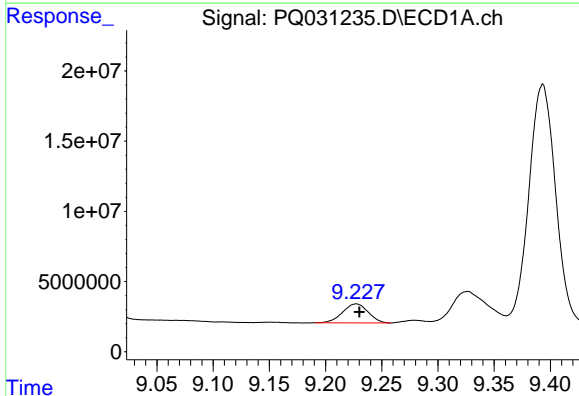
R.T.: 8.911 min
 Delta R.T.: 0.018 min
 Response: 1670029047
 Conc: 3955.44 ng/ml

Instrument :
 ECD_Q
 ClientSampled :



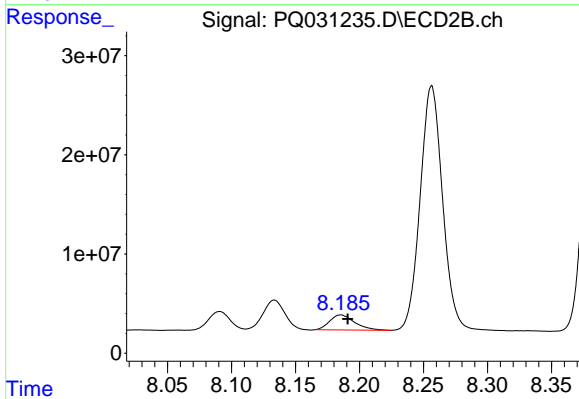
#43 AR-1268-3

R.T.: 8.091 min
 Delta R.T.: -0.005 min
 Response: 20391894
 Conc: 52.15 ng/ml



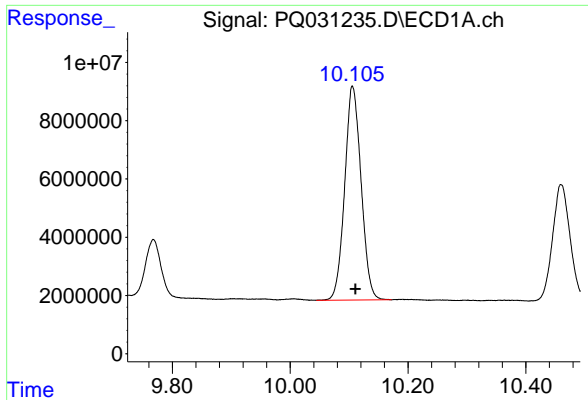
#44 AR-1268-4

R.T.: 9.227 min
 Delta R.T.: -0.003 min
 Response: 21339072
 Conc: 67.36 ng/ml



#44 AR-1268-4

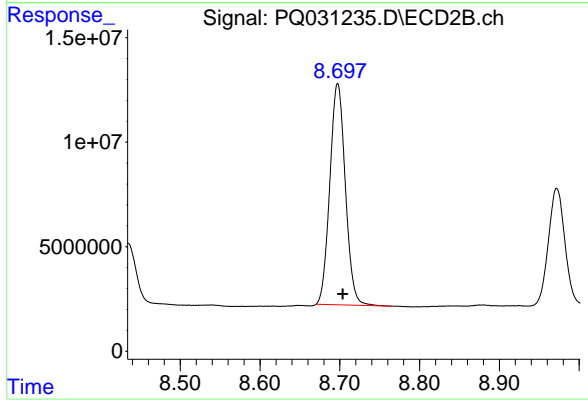
R.T.: 8.185 min
 Delta R.T.: -0.005 min
 Response: 20532787
 Conc: 210.21 ng/ml



#45 AR-1268-5

R.T.: 10.106 min
Delta R.T.: -0.005 min
Response: 141850870
Conc: 158.49 ng/ml

Instrument :
ECD_Q
ClientSampled :



#45 AR-1268-5

R.T.: 8.697 min
Delta R.T.: -0.006 min
Response: 143011104
Conc: 131.20 ng/ml