

Data Path : Z:\pestpcbsrv\HPCHEM1\ECD_Q\Data\PQ081619\
 Data File : PQ042506.D
 Signal(s) : Signal #1: ECD1A.ch Signal #2: ECD2B.ch
 Acq On : 16 Aug 2019 19:47
 Operator : SM\AJ
 Sample : AR1221ICC400
 Misc :
 ALS Vial : 10 Sample Multiplier: 1

Instrument :
 ECD_Q
 ClientSampleId :
 AR1221301

Integration File signal 1: autoint1.e
 Integration File signal 2: autoint2.e
 Quant Time: Aug 16 23:49:50 2019
 Quant Method : Z:\pestpcbsrv\HPCHEM1\ECD_Q\Method\PQ081619CLP.M
 Quant Title : GC EXTRACTABLES
 QLast Update : Fri Aug 16 23:48:37 2019
 Response via : Initial Calibration
 Integrator: ChemStation

Volume Inj. : 1 µl
 Signal #1 Phase : ZB MR1 Signal #2 Phase: ZB MR2
 Signal #1 Info : 30Mx0.32mmx 0.5µm Signal #2 Info : 30M x 0.32mm x 0.25µm

Compound	RT#1	RT#2	Resp#1	Resp#2	ng/ml	ng/ml

System Monitoring Compounds						
1) SA Tetrachlo...	5.683	4.745	31531133	27567462	20.000	20.000
2) SA Decachlor...	12.064	10.486	334.1E6	261.3E6	40.000	40.000
Target Compounds						
8) L2 AR-1221-1	5.964	5.051	6969948	6670039	400.000	400.000
9) L2 AR-1221-2	6.072	5.168	5194884	4936433	400.000	400.000
10) L2 AR-1221-3	6.167	5.272	17847209	18068107	400.000	400.000

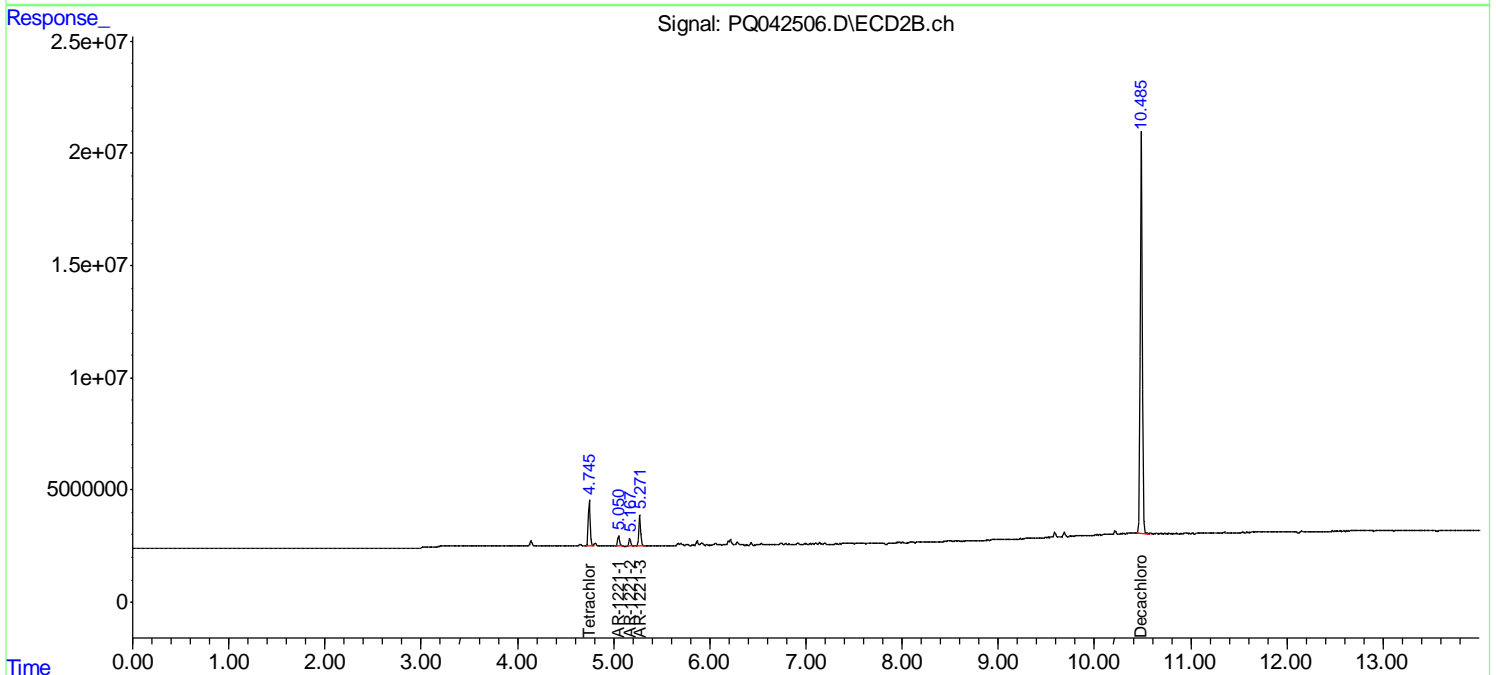
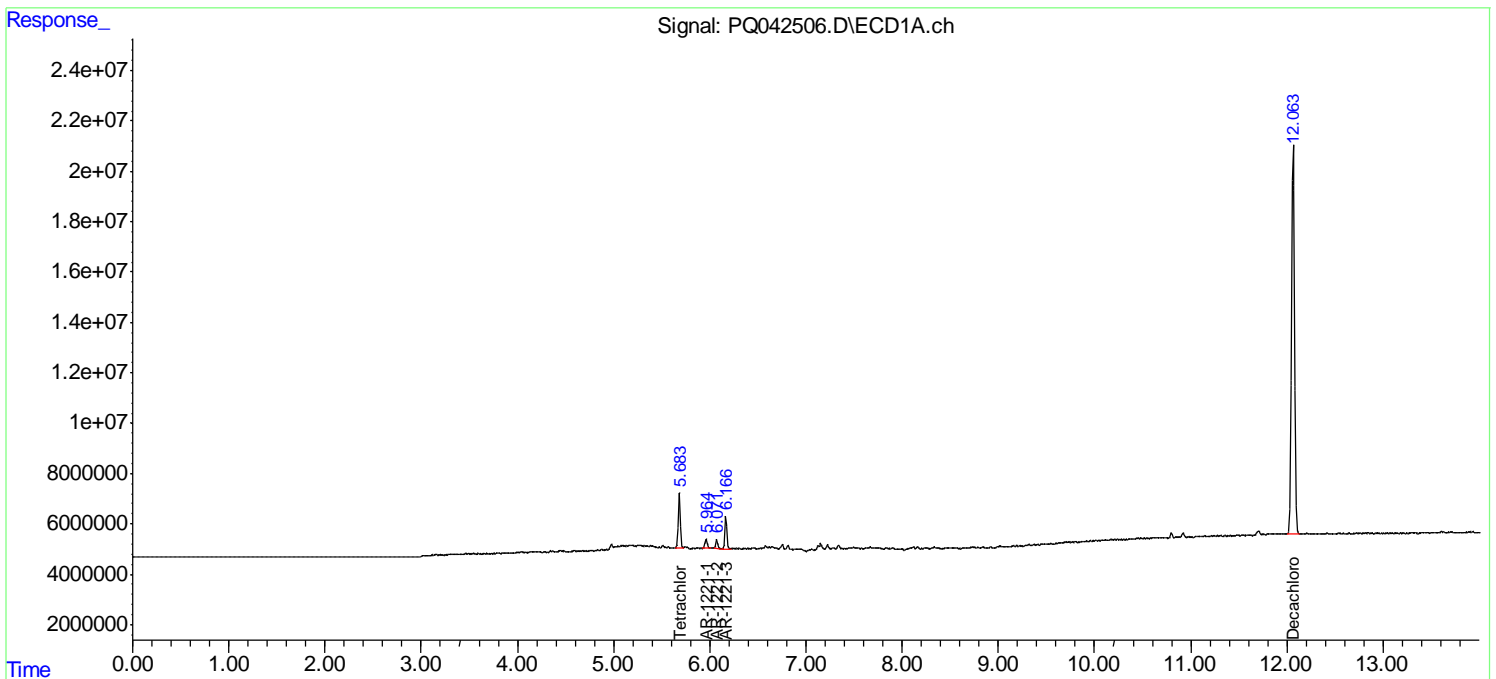
(f)=RT Delta > 1/2 Window (#)=Amounts differ by > 25% (m)=manual int.

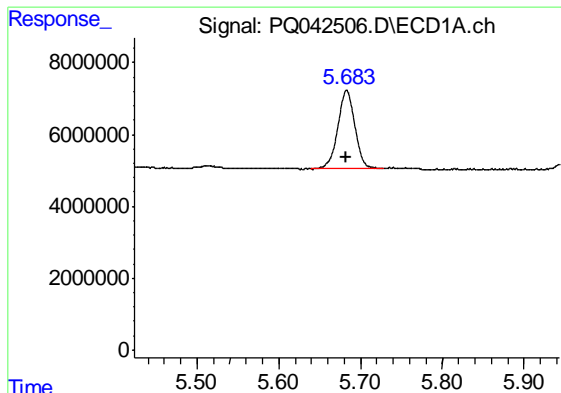
Data Path : Z:\pestpcbsrv\HPCHEM1\ECD_Q\Data\PQ081619\
 Data File : PQ042506.D
 Signal(s) : Signal #1: ECD1A.ch Signal #2: ECD2B.ch
 Acq On : 16 Aug 2019 19:47
 Operator : SM\AJ
 Sample : AR1221ICC400
 Misc :
 ALS Vial : 10 Sample Multiplier: 1

Instrument :
 ECD_Q
 ClientSampleId :
 AR1221301

Integration File signal 1: autoint1.e
 Integration File signal 2: autoint2.e
 Quant Time: Aug 16 23:49:50 2019
 Quant Method : Z:\pestpcbsrv\HPCHEM1\ECD_Q\Method\PQ081619CLP.M
 Quant Title : GC EXTRACTABLES
 QLast Update : Fri Aug 16 23:48:37 2019
 Response via : Initial Calibration
 Integrator: ChemStation

Volume Inj. : 1 µl
 Signal #1 Phase : ZB MR1 Signal #2 Phase: ZB MR2
 Signal #1 Info : 30Mx0.32mmx 0.5µm Signal #2 Info : 30M x 0.32mm x 0.25µm

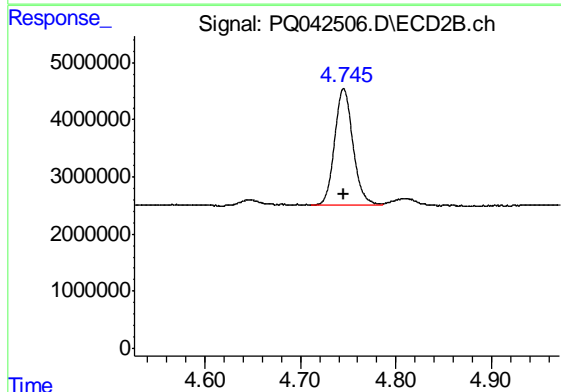




#1 Tetrachloro-m-xylene

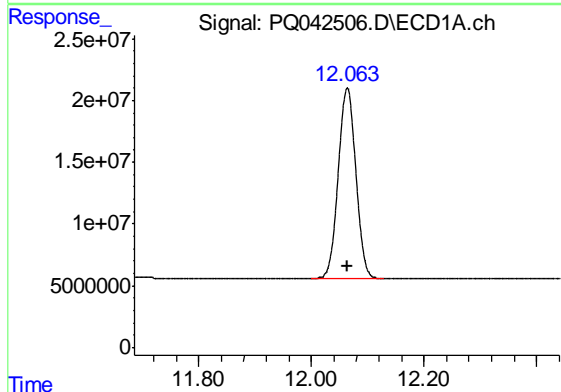
R.T.: 5.683 min
 Delta R.T.: 0.000 min
 Response: 31531133
 Conc: 20.00 ng/ml

Instrument :
 ECD_Q
 ClientSampleId :
 AR1221301



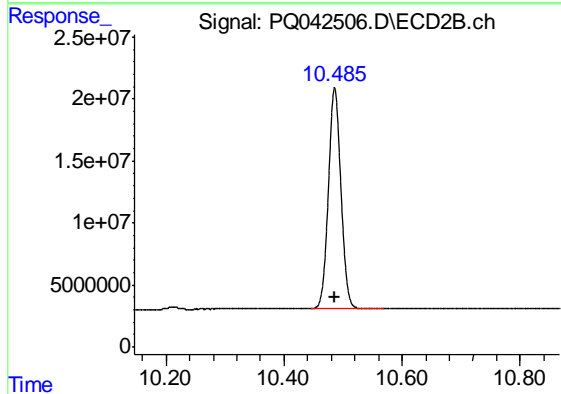
#1 Tetrachloro-m-xylene

R.T.: 4.745 min
 Delta R.T.: 0.000 min
 Response: 27567462
 Conc: 20.00 ng/ml



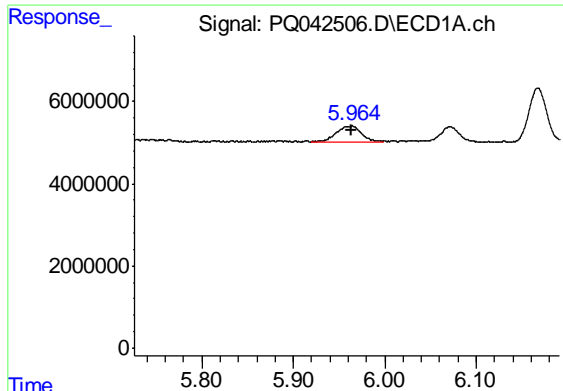
#2 Decachlorobiphenyl

R.T.: 12.064 min
 Delta R.T.: 0.000 min
 Response: 334117262
 Conc: 40.00 ng/ml



#2 Decachlorobiphenyl

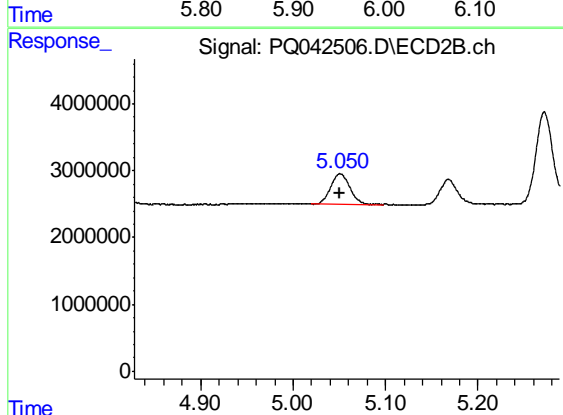
R.T.: 10.486 min
 Delta R.T.: 0.000 min
 Response: 261301780
 Conc: 40.00 ng/ml



#8 AR-1221-1

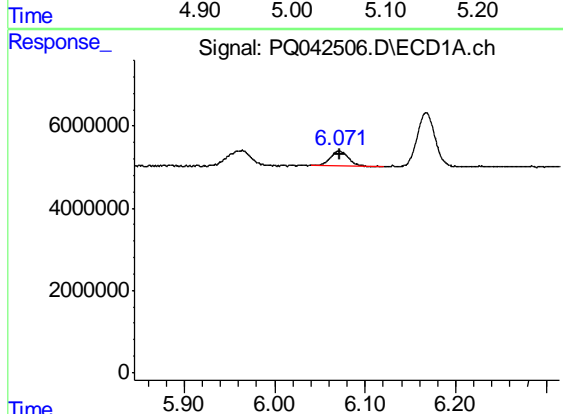
R.T.: 5.964 min
 Delta R.T.: 0.000 min
 Response: 6969948
 Conc: 400.00 ng/ml

Instrument :
 ECD_Q
 ClientSampleId :
 AR1221301



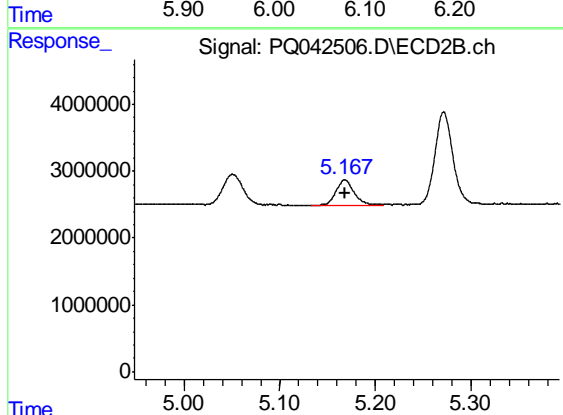
#8 AR-1221-1

R.T.: 5.051 min
 Delta R.T.: 0.000 min
 Response: 6670039
 Conc: 400.00 ng/ml



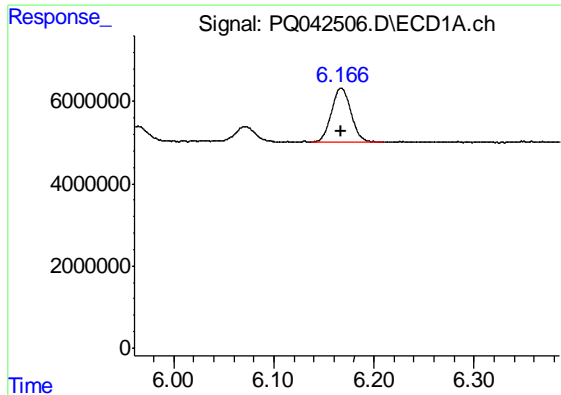
#9 AR-1221-2

R.T.: 6.072 min
 Delta R.T.: 0.000 min
 Response: 5194884
 Conc: 400.00 ng/ml



#9 AR-1221-2

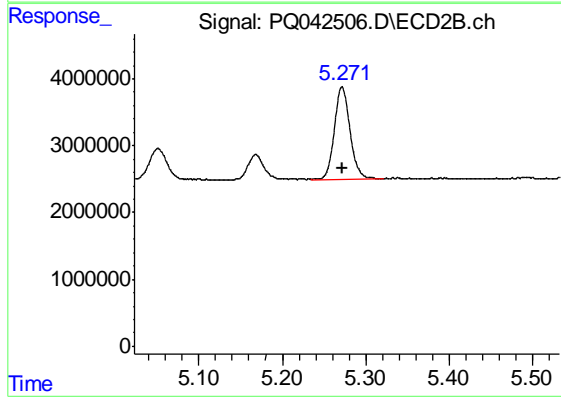
R.T.: 5.168 min
 Delta R.T.: 0.000 min
 Response: 4936433
 Conc: 400.00 ng/ml



#10 AR-1221-3

R.T.: 6.167 min
Delta R.T.: 0.000 min
Response: 17847209
Conc: 400.00 ng/ml

Instrument :
ECD_Q
ClientSampleId :
AR1221301



#10 AR-1221-3

R.T.: 5.272 min
Delta R.T.: 0.000 min
Response: 18068107
Conc: 400.00 ng/ml