

Data Path : Z:\pestpcbsrv\HPCHEM1\ECD_Q\Data\PQ082119\
 Data File : PQ042605.D
 Signal(s) : Signal #1: ECD1A.ch Signal #2: ECD2B.ch
 Acq On : 20 Aug 2019 20:21
 Operator : SM\AJ
 Sample : AR1221ICC800
 Misc :
 ALS Vial : 11 Sample Multiplier: 1

Instrument :
 ECD_Q
 ClientSampleId :
 AR1221401

Integration File signal 1: autoint1.e
 Integration File signal 2: autoint2.e
 Quant Time: Aug 21 03:57:59 2019
 Quant Method : Z:\pestpcbsrv\HPCHEM1\ECD_Q\Method\PQ082119CLP.M
 Quant Title : GC EXTRACTABLES
 QLast Update : Wed Aug 21 03:56:35 2019
 Response via : Initial Calibration
 Integrator: ChemStation

Volume Inj. : 1 µl
 Signal #1 Phase : ZB MR1 Signal #2 Phase: ZB MR2
 Signal #1 Info : 30Mx0.32mmx 0.5µm Signal #2 Info : 30M x 0.32mm x 0.25µm

Compound	RT#1	RT#2	Resp#1	Resp#2	ng/ml	ng/ml

System Monitoring Compounds						
1) SA Tetrachlo...	5.629	4.691	131.1E6	112.8E6	34.853	35.597
2) SA Decachlor...	11.981	10.424	608.9E6	521.2E6	72.003	73.125
Target Compounds						
8) L2 AR-1221-1	5.910	4.997	26890545	25981655	686.528	690.290
9) L2 AR-1221-2	6.018	5.115	19234510	18792749	715.319	694.629
10) L2 AR-1221-3	6.114	5.217	66468967	63886120	686.918	675.033

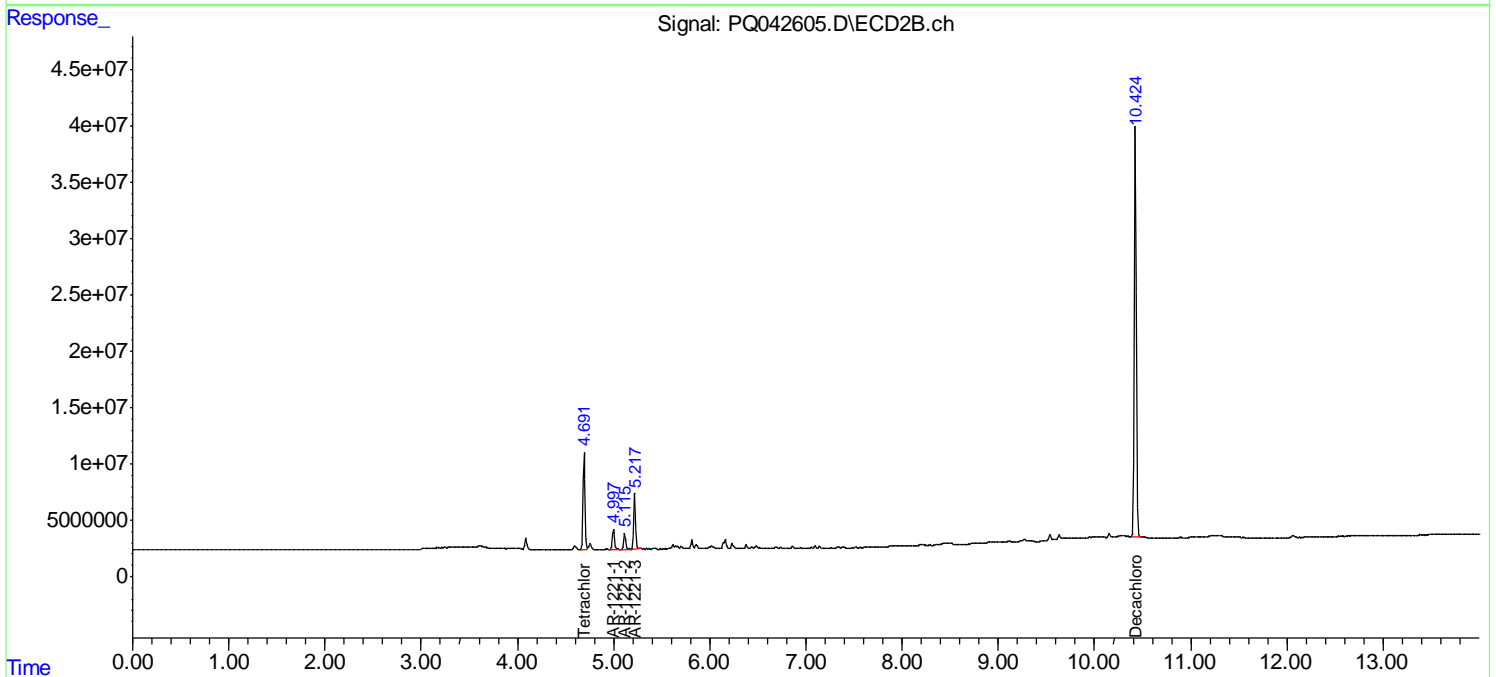
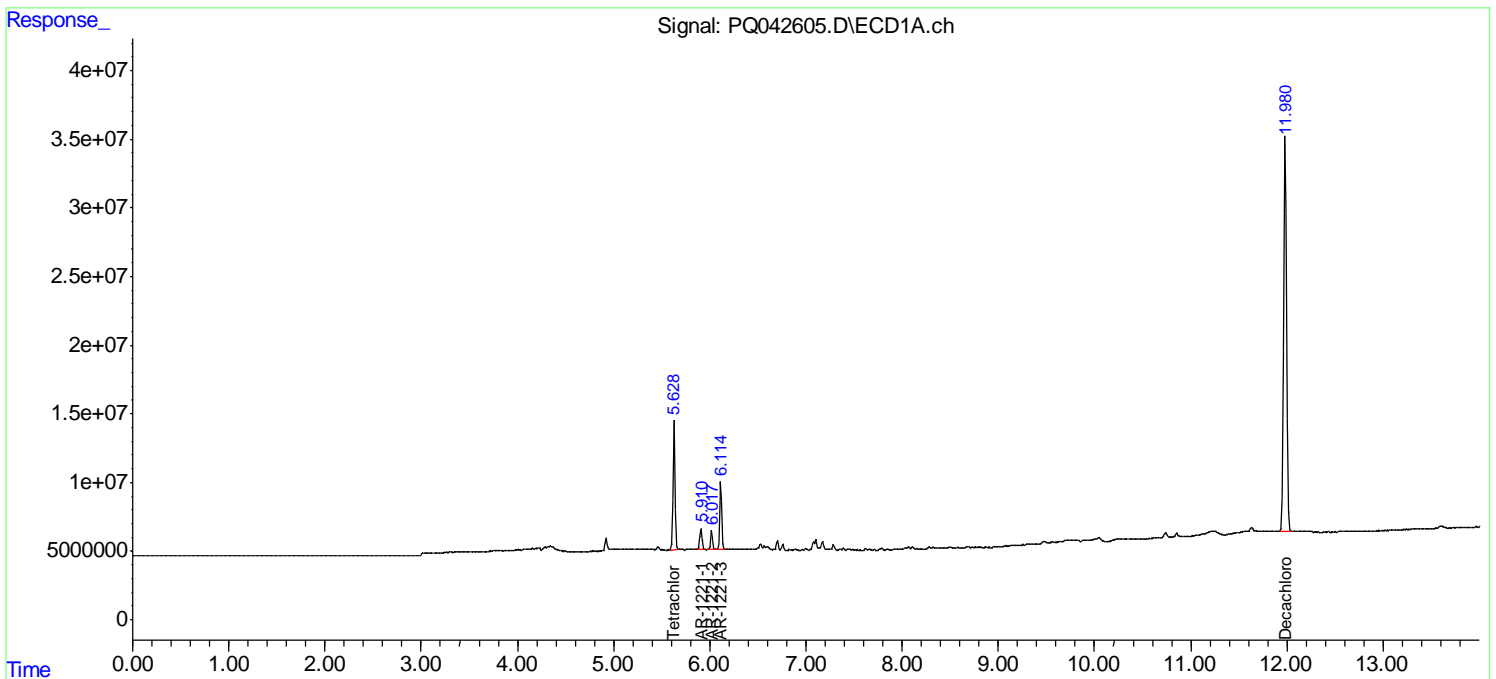
(f)=RT Delta > 1/2 Window (#)=Amounts differ by > 25% (m)=manual int.

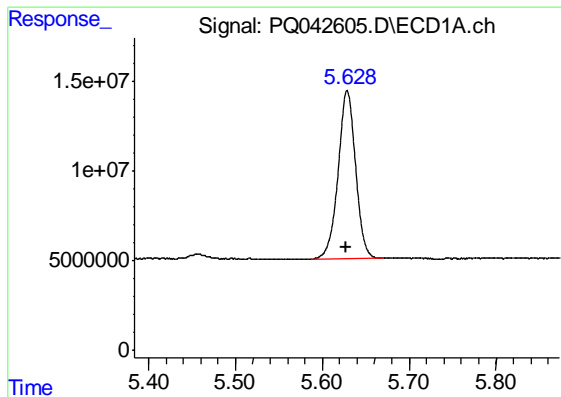
Data Path : Z:\pestpcbsrv\HPCHEM1\ECD_Q\Data\PQ082119\
 Data File : PQ042605.D
 Signal(s) : Signal #1: ECD1A.ch Signal #2: ECD2B.ch
 Acq On : 20 Aug 2019 20:21
 Operator : SM\AJ
 Sample : AR1221ICC800
 Misc :
 ALS Vial : 11 Sample Multiplier: 1

Instrument :
 ECD_Q
 Client Sampled :
 AR1221401

Integration File signal 1: autoint1.e
 Integration File signal 2: autoint2.e
 Quant Time: Aug 21 03:57:59 2019
 Quant Method : Z:\pestpcbsrv\HPCHEM1\ECD_Q\Method\PQ082119CLP.M
 Quant Title : GC EXTRACTABLES
 QLast Update : Wed Aug 21 03:56:35 2019
 Response via : Initial Calibration
 Integrator: ChemStation

Volume Inj. : 1 µl
 Signal #1 Phase : ZB MR1 Signal #2 Phase: ZB MR2
 Signal #1 Info : 30Mx0.32mmx 0.5µm Signal #2 Info : 30M x 0.32mm x 0.25µm

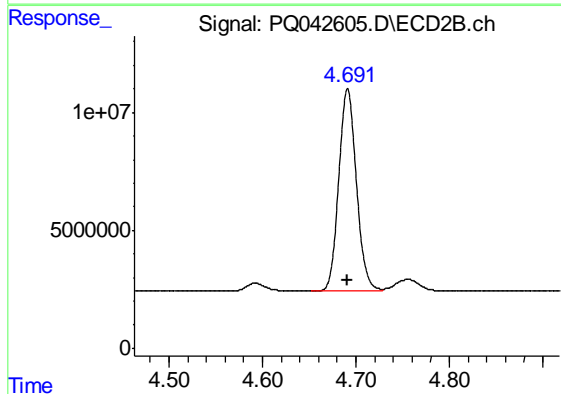




#1 Tetrachloro-m-xylene

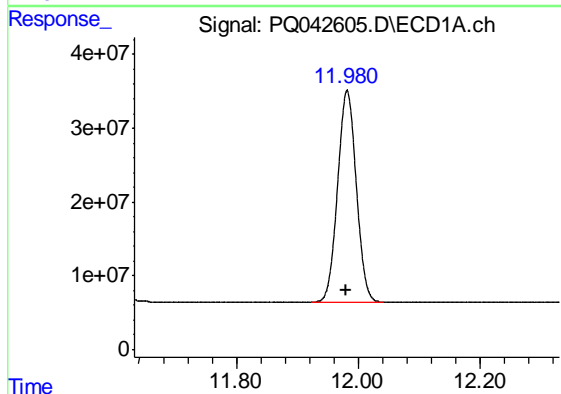
R.T.: 5.629 min
Delta R.T.: 0.000 min
Response: 131129546
Conc: 34.85 ng/ml

Instrument :
ECD_Q
ClientSampleId :
AR1221401



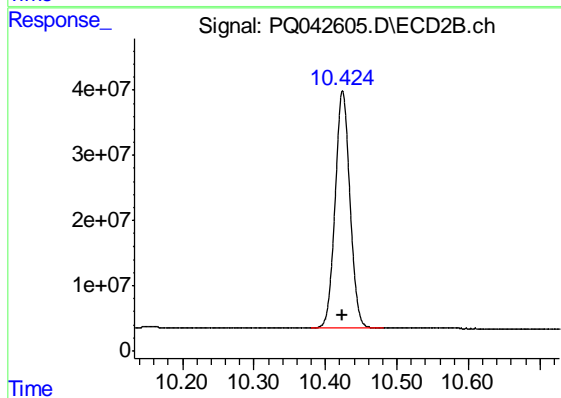
#1 Tetrachloro-m-xylene

R.T.: 4.691 min
Delta R.T.: 0.000 min
Response: 112845199
Conc: 35.60 ng/ml



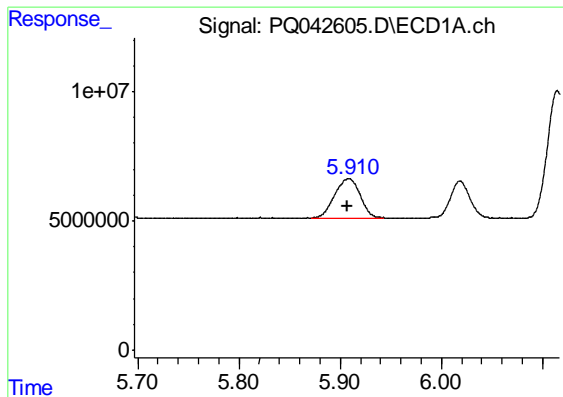
#2 Decachlorobiphenyl

R.T.: 11.981 min
Delta R.T.: 0.000 min
Response: 608906444
Conc: 72.00 ng/ml



#2 Decachlorobiphenyl

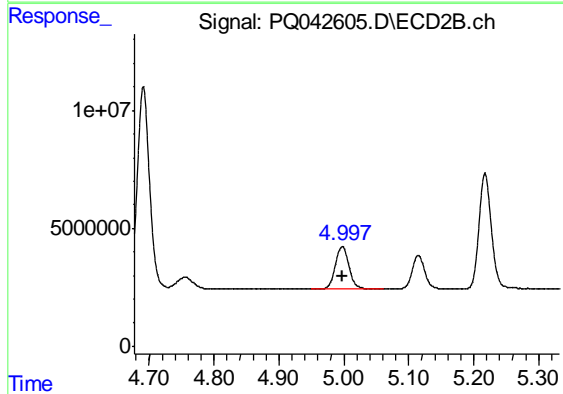
R.T.: 10.424 min
Delta R.T.: 0.000 min
Response: 521170955
Conc: 73.13 ng/ml



#8 AR-1221-1

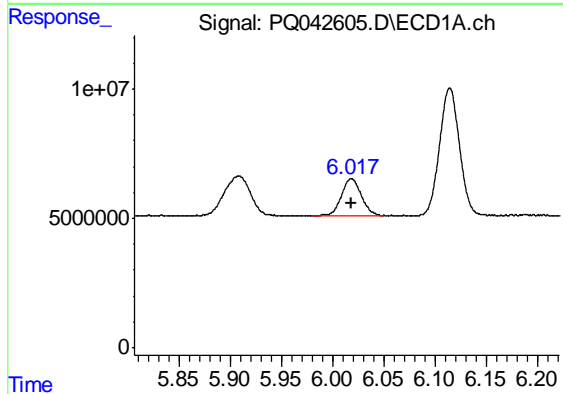
R.T.: 5.910 min
 Delta R.T.: 0.003 min
 Response: 26890545
 Conc: 686.53 ng/ml

Instrument :
 ECD_Q
 ClientSampleId :
 AR1221401



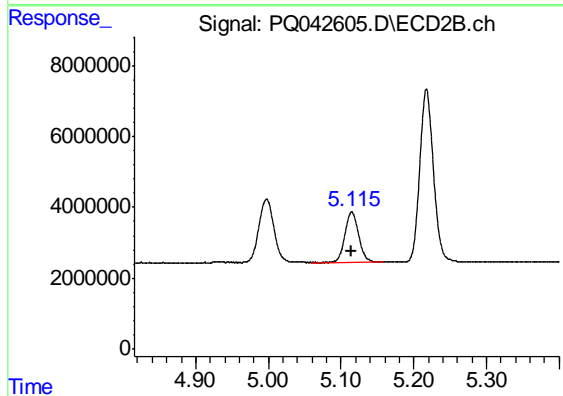
#8 AR-1221-1

R.T.: 4.997 min
 Delta R.T.: 0.000 min
 Response: 25981655
 Conc: 690.29 ng/ml



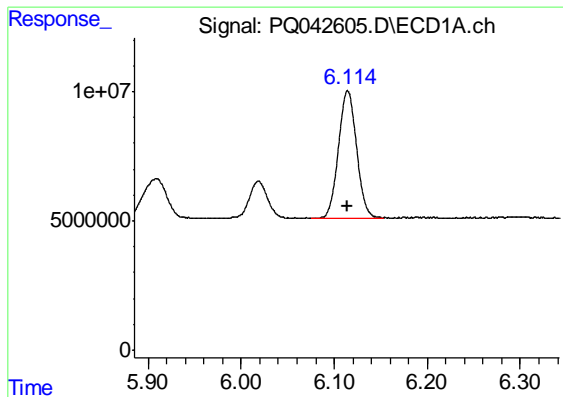
#9 AR-1221-2

R.T.: 6.018 min
 Delta R.T.: 0.000 min
 Response: 19234510
 Conc: 715.32 ng/ml



#9 AR-1221-2

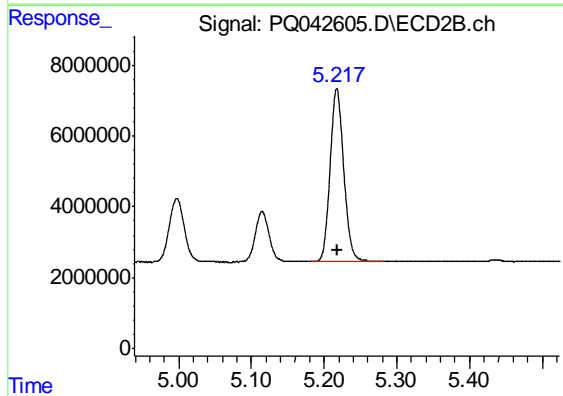
R.T.: 5.115 min
 Delta R.T.: 0.000 min
 Response: 18792749
 Conc: 694.63 ng/ml



#10 AR-1221-3

R.T.: 6.114 min
Delta R.T.: 0.000 min
Response: 66468967
Conc: 686.92 ng/ml

Instrument :
ECD_Q
ClientSampleId :
AR1221401



#10 AR-1221-3

R.T.: 5.217 min
Delta R.T.: 0.000 min
Response: 63886120
Conc: 675.03 ng/ml