

Data Path : Z:\pestpcbsrv\HPCHEM1\ECD_Q\Data\PQ082219\
 Data File : PQ042715.D
 Signal(s) : Signal #1: ECD1A.ch Signal #2: ECD2B.ch
 Acq On : 22 Aug 2019 07:40
 Operator : SM\AJ
 Sample : K4457-01
 Misc :
 ALS Vial : 47 Sample Multiplier: 1

Instrument :
 ECD_Q
 ClientSampleId :
 ETQ21

Integration File signal 1: autoint1.e
 Integration File signal 2: autoint2.e
 Quant Time: Aug 22 09:19:28 2019
 Quant Method : Z:\pestpcbsrv\HPCHEM1\ECD_Q\Method\PQ082119CLP.M
 Quant Title : GC EXTRACTABLES
 QLast Update : Wed Aug 21 06:41:55 2019
 Response via : Initial Calibration
 Integrator: ChemStation

Volume Inj. : 1 µl
 Signal #1 Phase : ZB MR1 Signal #2 Phase: ZB MR2
 Signal #1 Info : 30Mx0.32mmx 0.5µm Signal #2 Info : 30M x 0.32mm x 0.25µm

Compound	RT#1	RT#2	Resp#1	Resp#2	ng/ml	ng/ml

System Monitoring Compounds						
1) SA Tetrachlo...	5.627	4.690	52999851	47397140	17.855	18.913
2) SA Decachlor...	11.985	10.424	169.6E6	142.2E6	22.465	23.288
Target Compounds						
6) L1 AR-1016-4	7.246	0.000	85127	0	0.963	N.D. #
7) L1 AR-1016-5	7.564	6.620	443600	2001887	5.245	22.351 #
9) L2 AR-1221-2	6.014	0.000	38587	0	1.584	N.D. #
14) L3 AR-1232-4	7.246	0.000	85127	0	2.088	N.D. #
15) L3 AR-1232-5	0.000	6.620	0	2001887	N.D.	50.482 #
19) L4 AR-1242-4	7.246	0.000	85127	0	1.107	N.D. #
20) L4 AR-1242-5	8.114	7.084	35558496	1265473	376.860	11.289 #
23) L5 AR-1248-3	7.564	0.000	443600	0	3.496	N.D. #
24) L5 AR-1248-4	8.068	6.620	5625139	2001887	33.933	14.653 #
25) L5 AR-1248-5	8.114	7.084	35558496	1265473	223.344	8.039 #
26) L6 AR-1254-1	8.046	7.084	215000	1265473	1.465	5.608 #
27) L6 AR-1254-2	8.275	7.286	1468483	21536147	6.122	106.506 #
28) L6 AR-1254-3	8.672	7.727	757626	985694	2.657	2.799
30) L6 AR-1254-5	9.409	8.400	124886	1449058	0.484	3.988 #
31) L7 AR-1260-1	0.000	7.848	0	733966	N.D.	3.597 #
32) L7 AR-1260-2	9.106	8.048	3471922	729898	14.445	2.725 #
33) L7 AR-1260-3	9.481	0.000	52526	0	0.243	N.D. #
35) L7 AR-1260-5	0.000	8.962	0	1178088	N.D.	1.892 #
36) L8 AR-1262-1	9.481	8.439	52526	509208	0.364	2.975 #
37) L8 AR-1262-2	0.000	8.962	0	1178088	N.D.	1.410 #
38) L8 AR-1262-3	0.000	9.259	0	1831855	N.D.	5.154 #
39) L8 AR-1262-4	0.000	9.326	0	794238	N.D.	1.232 #
41) L9 AR-1268-1	0.000	9.259	0	1831855	N.D.	1.825 #
42) L9 AR-1268-2	0.000	9.326	0	794238	N.D.	0.846 #
43) L9 AR-1268-3	0.000	9.535	0	3643432	N.D.	4.574 #
45) L9 AR-1268-5	11.627	10.153	279940	851146	0.099	0.332 #

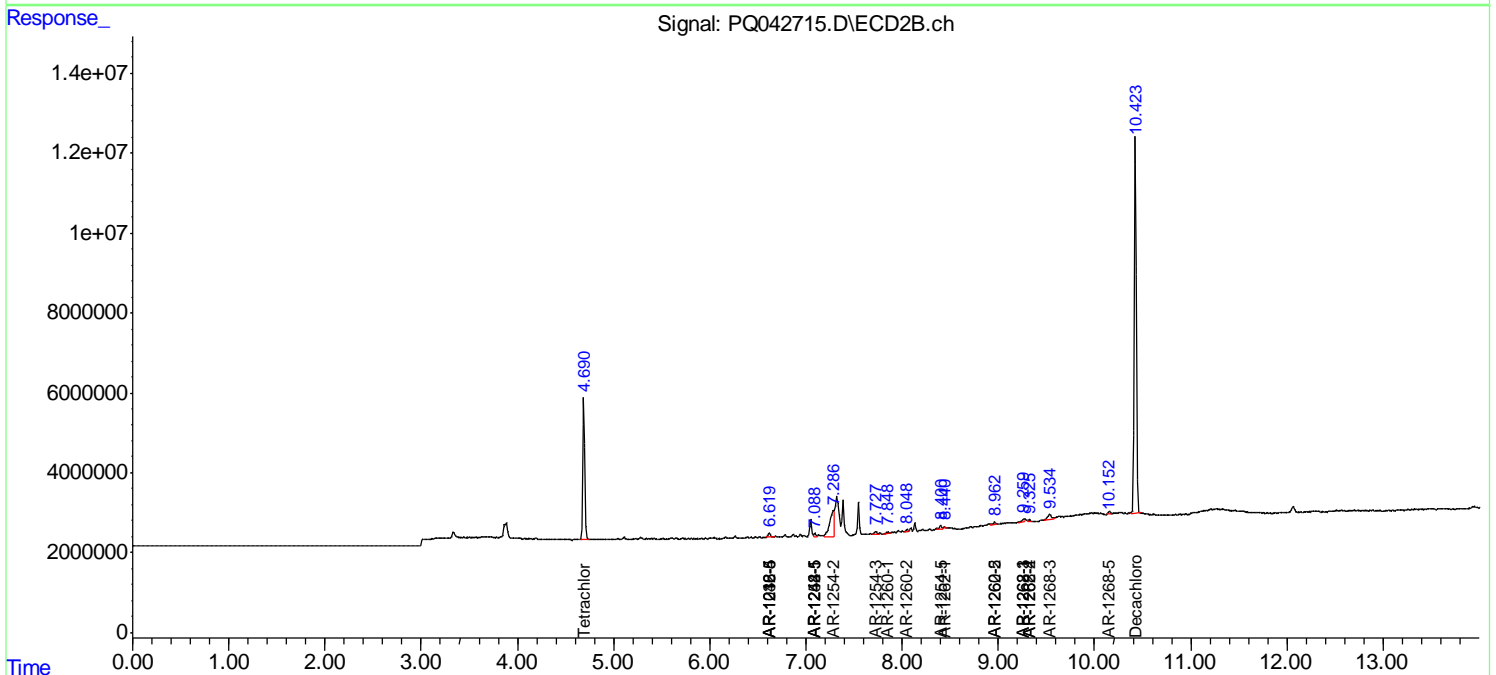
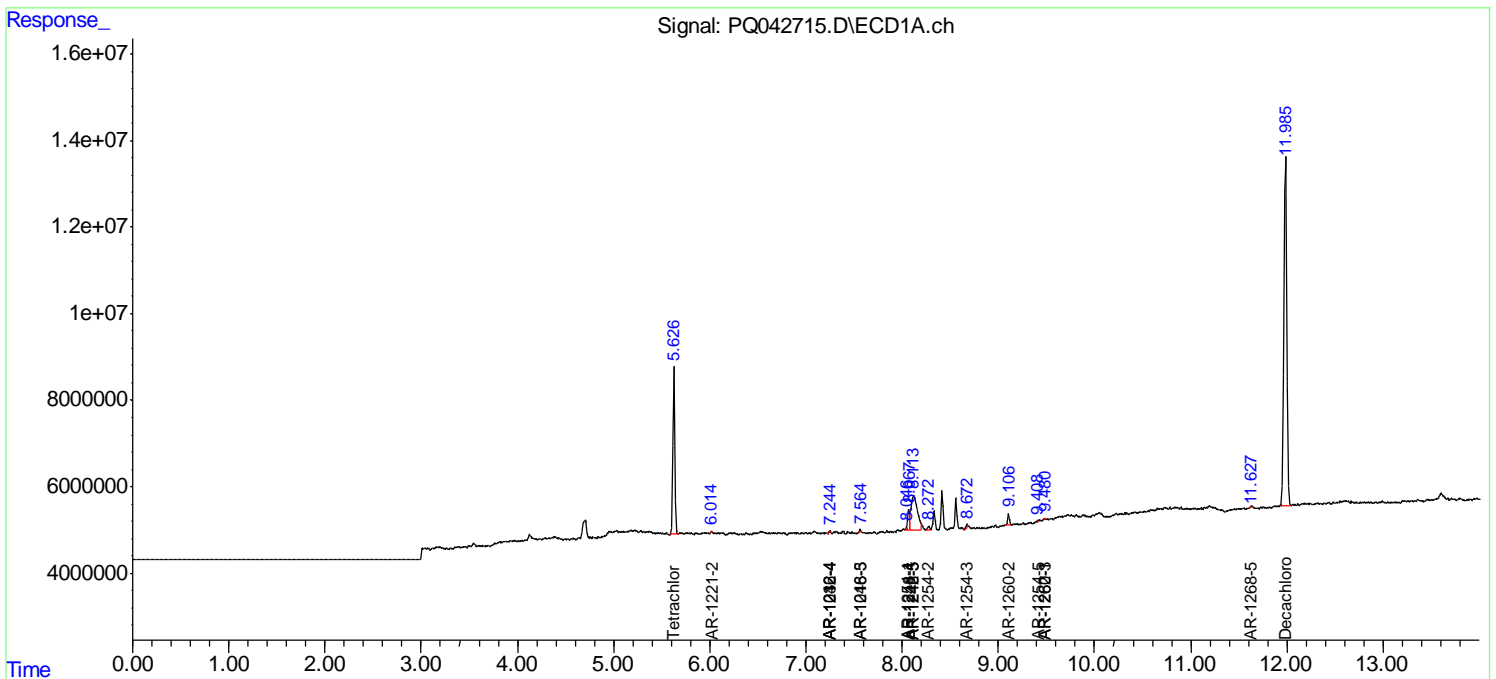
(f)=RT Delta > 1/2 Window (#)=Amounts differ by > 25% (m)=manual int.

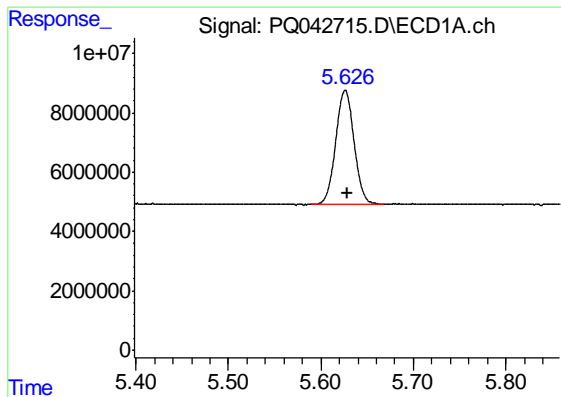
Data Path : Z:\pestpcbsrv\HPCHEM1\ECD_Q\Data\PQ082219\
 Data File : PQ042715.D
 Signal(s) : Signal #1: ECD1A.ch Signal #2: ECD2B.ch
 Acq On : 22 Aug 2019 07:40
 Operator : SM\AJ
 Sample : K4457-01
 Misc :
 ALS Vial : 47 Sample Multiplier: 1

Instrument :
 ECD_Q
 Client Sampled :
 ETQ21

Integration File signal 1: autoint1.e
 Integration File signal 2: autoint2.e
 Quant Time: Aug 22 09:19:28 2019
 Quant Method : Z:\pestpcbsrv\HPCHEM1\ECD_Q\Method\PQ082119CLP.M
 Quant Title : GC EXTRACTABLES
 QLast Update : Wed Aug 21 06:41:55 2019
 Response via : Initial Calibration
 Integrator: ChemStation

Volume Inj. : 1 µl
 Signal #1 Phase : ZB MR1 Signal #2 Phase: ZB MR2
 Signal #1 Info : 30Mx0.32mmx 0.5µm Signal #2 Info : 30M x 0.32mm x 0.25µm

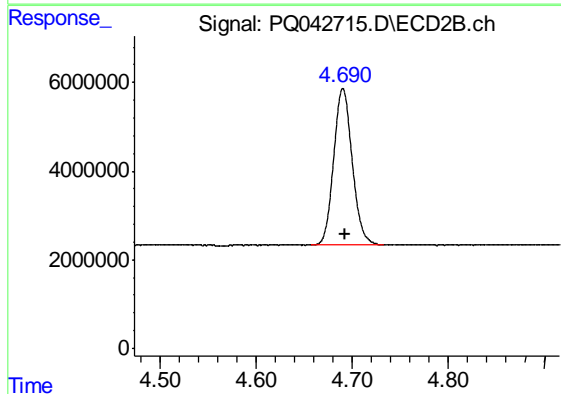




#1 Tetrachloro-m-xylene

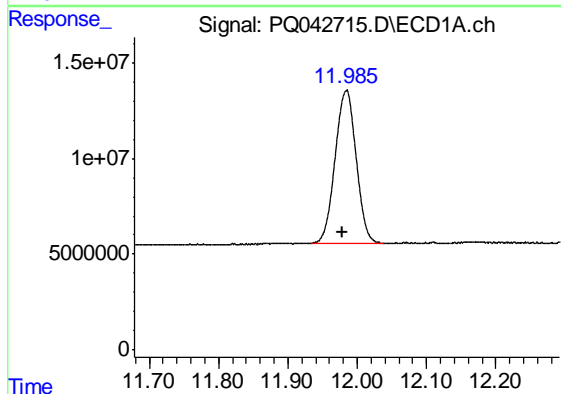
R.T.: 5.627 min
Delta R.T.: -0.002 min
Response: 52999851
Conc: 17.85 ng/ml

Instrument :
ECD_Q
ClientSampleId :
ETQ21



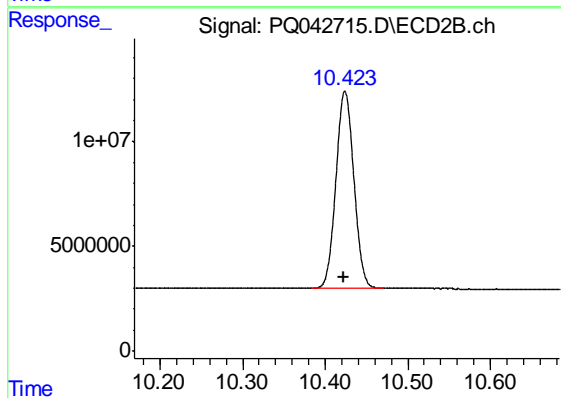
#1 Tetrachloro-m-xylene

R.T.: 4.690 min
Delta R.T.: -0.002 min
Response: 47397140
Conc: 18.91 ng/ml



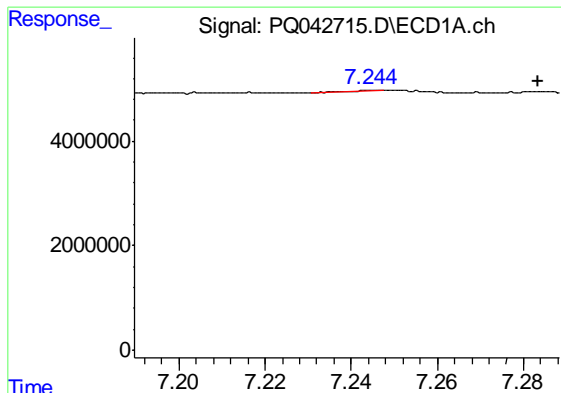
#2 Decachlorobiphenyl

R.T.: 11.985 min
Delta R.T.: 0.007 min
Response: 169582124
Conc: 22.47 ng/ml



#2 Decachlorobiphenyl

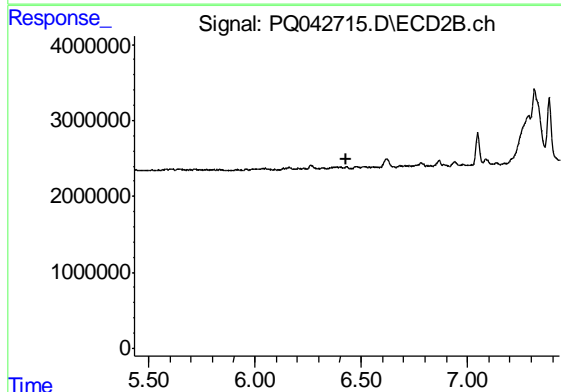
R.T.: 10.424 min
Delta R.T.: 0.002 min
Response: 142210669
Conc: 23.29 ng/ml



#6 AR-1016-4

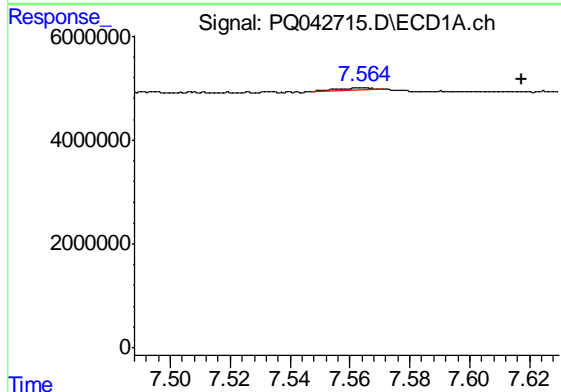
R.T.: 7.246 min
 Delta R.T.: -0.038 min
 Response: 85127
 Conc: 0.96 ng/ml

Instrument :
 ECD_Q
 ClientSampled :
 ETQ21



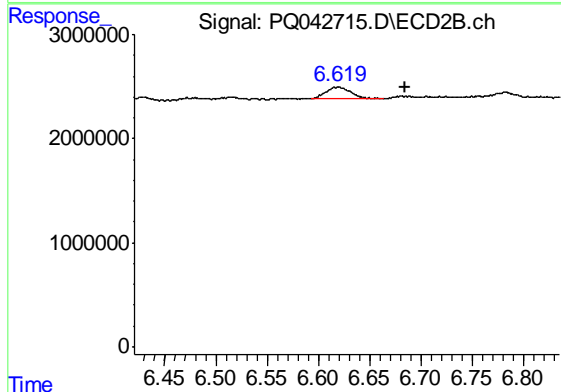
#6 AR-1016-4

R.T.: 0.000 min
 Exp R.T. : 6.433 min
 Response: 0
 Conc: N.D.



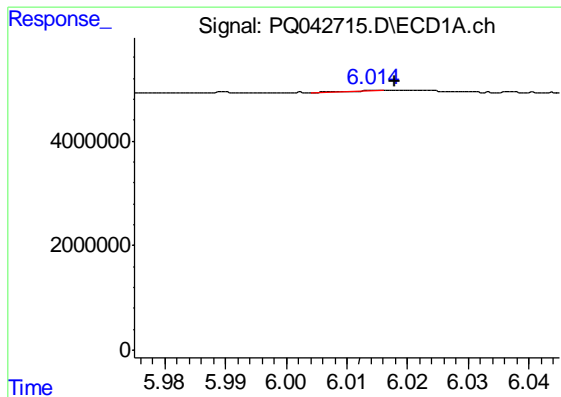
#7 AR-1016-5

R.T.: 7.564 min
 Delta R.T.: -0.053 min
 Response: 443600
 Conc: 5.25 ng/ml



#7 AR-1016-5

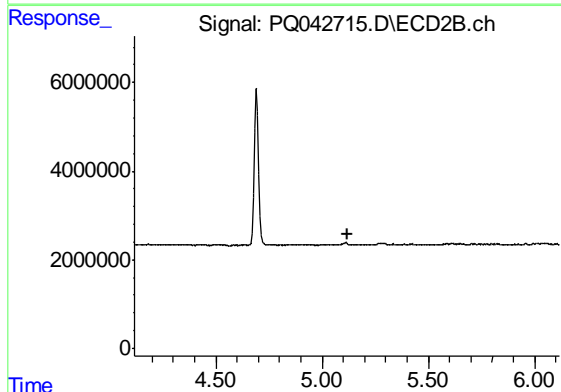
R.T.: 6.620 min
 Delta R.T.: -0.065 min
 Response: 2001887
 Conc: 22.35 ng/ml



#9 AR-1221-2

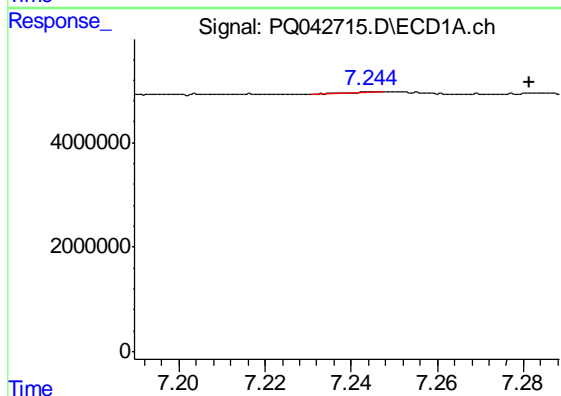
R.T.: 6.014 min
 Delta R.T.: -0.004 min
 Response: 38587
 Conc: 1.58 ng/ml

Instrument :
 ECD_Q
 ClientSampled :
 ETQ21



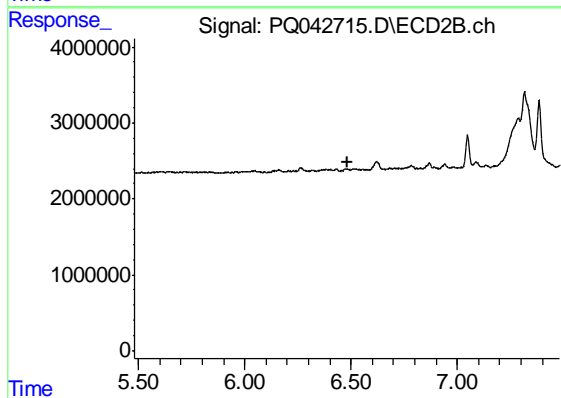
#9 AR-1221-2

R.T.: 0.000 min
 Exp R.T. : 5.117 min
 Response: 0
 Conc: N.D.



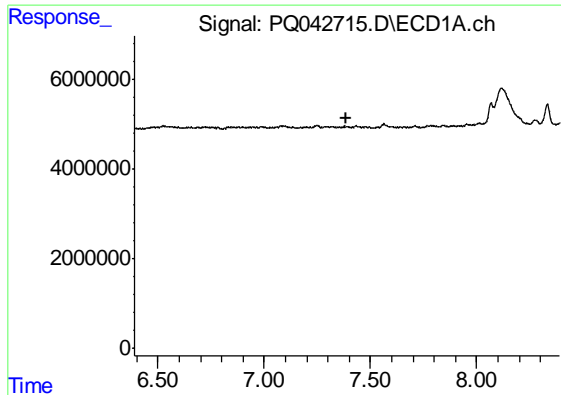
#14 AR-1232-4

R.T.: 7.246 min
 Delta R.T.: -0.036 min
 Response: 85127
 Conc: 2.09 ng/ml



#14 AR-1232-4

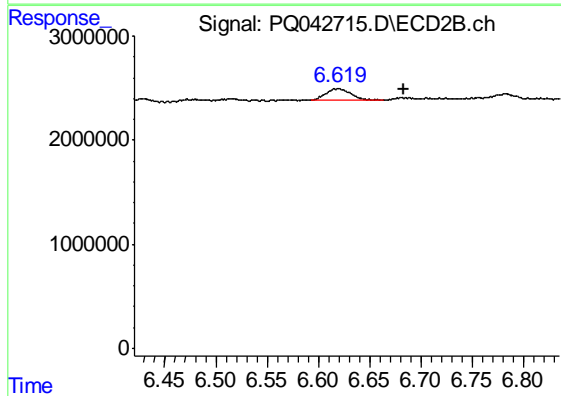
R.T.: 0.000 min
 Exp R.T. : 6.481 min
 Response: 0
 Conc: N.D.



#15 AR-1232-5

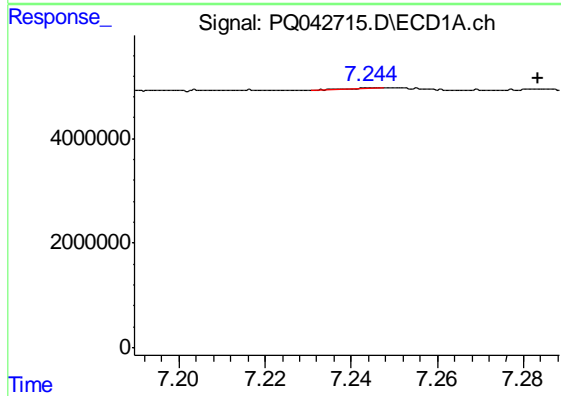
R.T.: 0.000 min
 Exp R.T. : 7.389 min
 Response: 0
 Conc: N.D.

Instrument :
 ECD_Q
 ClientSampled :
 ETQ21



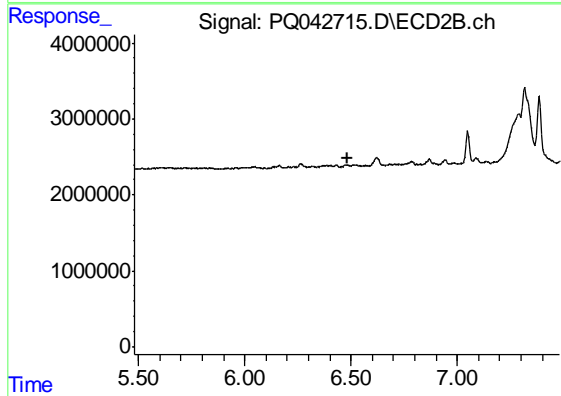
#15 AR-1232-5

R.T.: 6.620 min
 Delta R.T.: -0.063 min
 Response: 2001887
 Conc: 50.48 ng/ml



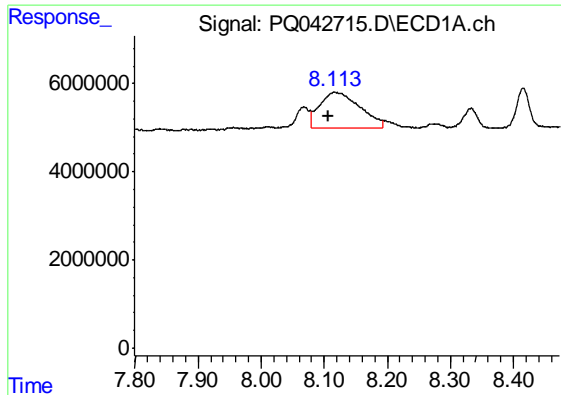
#19 AR-1242-4

R.T.: 7.246 min
 Delta R.T.: -0.038 min
 Response: 85127
 Conc: 1.11 ng/ml



#19 AR-1242-4

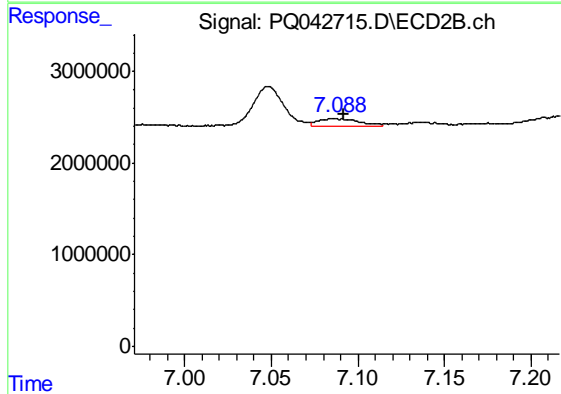
R.T.: 0.000 min
 Exp R.T. : 6.481 min
 Response: 0
 Conc: N.D.



#20 AR-1242-5

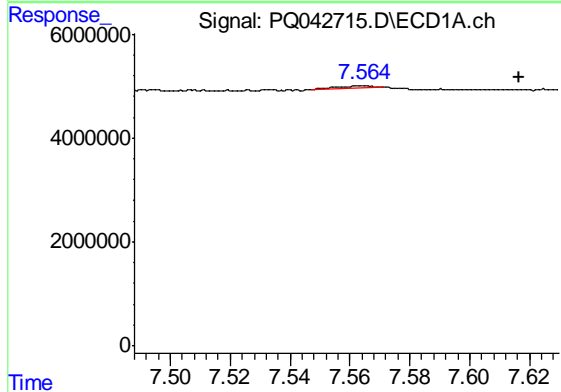
R.T.: 8.114 min
 Delta R.T.: 0.008 min
 Response: 35558496
 Conc: 376.86 ng/ml

Instrument :
 ECD_Q
 ClientSampleId :
 ETQ21



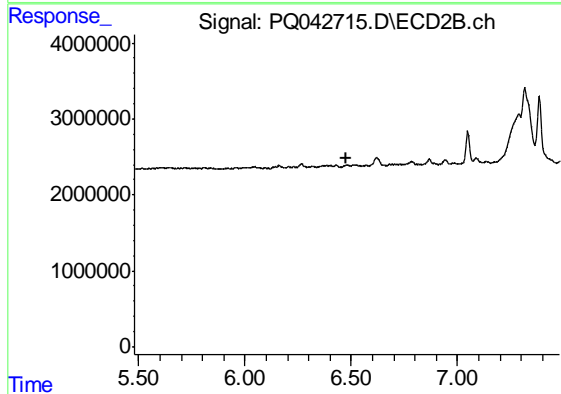
#20 AR-1242-5

R.T.: 7.084 min
 Delta R.T.: -0.008 min
 Response: 1265473
 Conc: 11.29 ng/ml



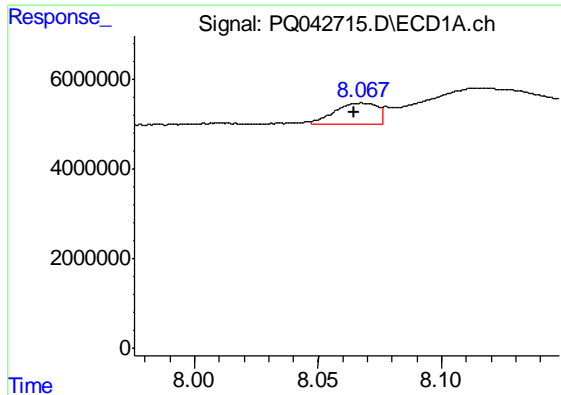
#23 AR-1248-3

R.T.: 7.564 min
 Delta R.T.: -0.052 min
 Response: 443600
 Conc: 3.50 ng/ml



#23 AR-1248-3

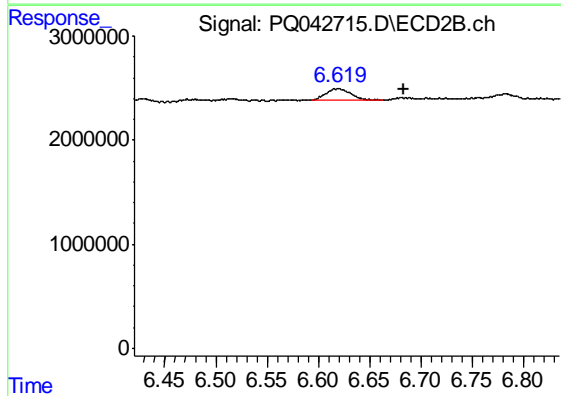
R.T.: 0.000 min
 Exp R.T. : 6.480 min
 Response: 0
 Conc: N.D.



#24 AR-1248-4

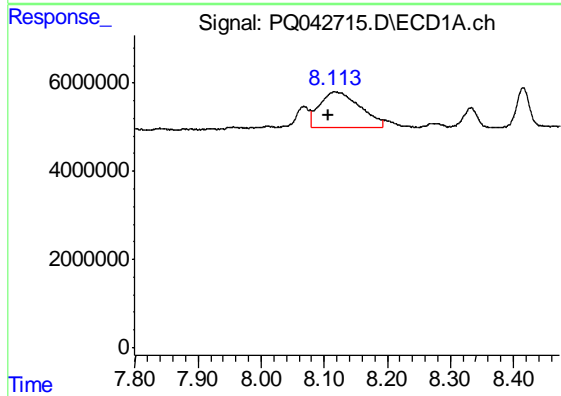
R.T.: 8.068 min
 Delta R.T.: 0.003 min
 Response: 5625139
 Conc: 33.93 ng/ml

Instrument :
 ECD_Q
 ClientSampleId :
 ETQ21



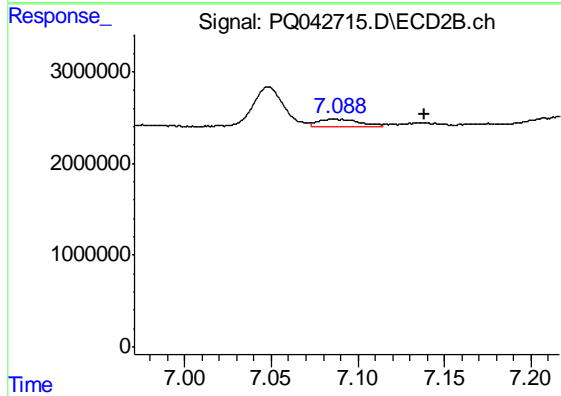
#24 AR-1248-4

R.T.: 6.620 min
 Delta R.T.: -0.063 min
 Response: 2001887
 Conc: 14.65 ng/ml



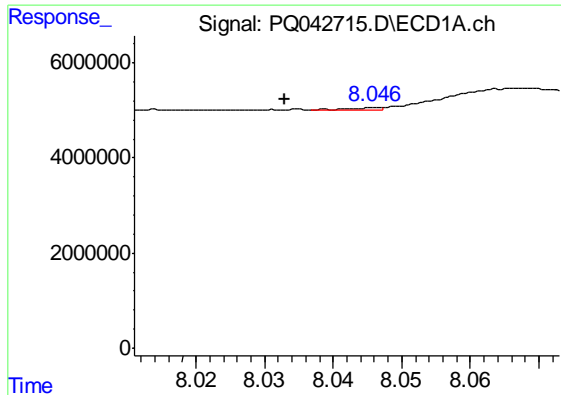
#25 AR-1248-5

R.T.: 8.114 min
 Delta R.T.: 0.008 min
 Response: 35558496
 Conc: 223.34 ng/ml



#25 AR-1248-5

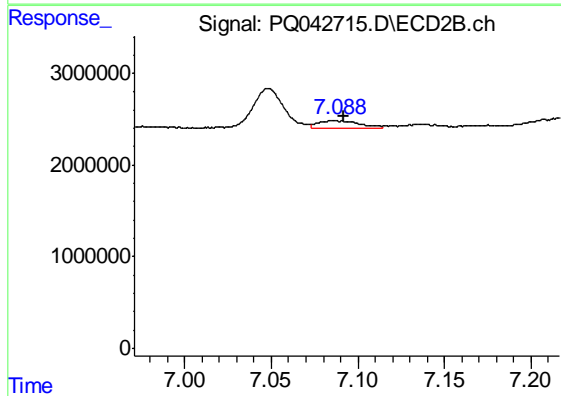
R.T.: 7.084 min
 Delta R.T.: -0.054 min
 Response: 1265473
 Conc: 8.04 ng/ml



#26 AR-1254-1

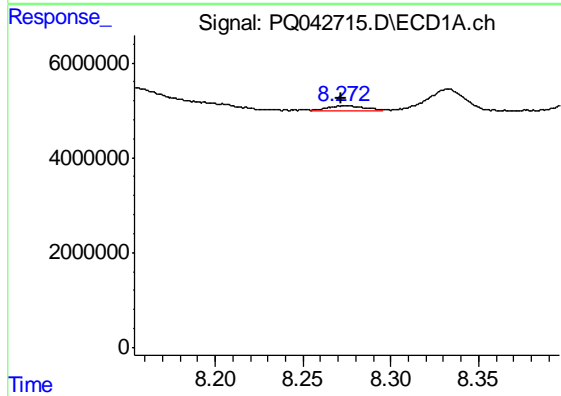
R.T.: 8.046 min
 Delta R.T.: 0.013 min
 Response: 215000
 Conc: 1.47 ng/ml

Instrument :
 ECD_Q
 ClientSampleId :
 ETQ21



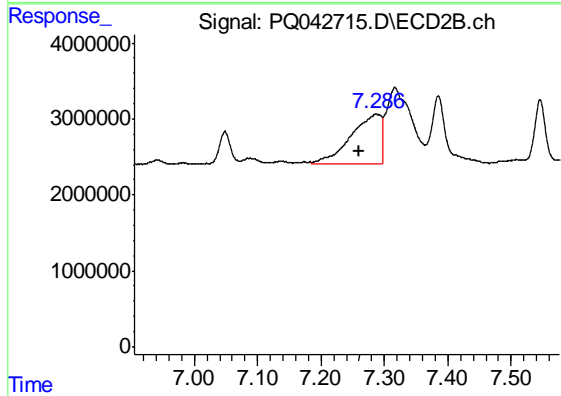
#26 AR-1254-1

R.T.: 7.084 min
 Delta R.T.: -0.007 min
 Response: 1265473
 Conc: 5.61 ng/ml



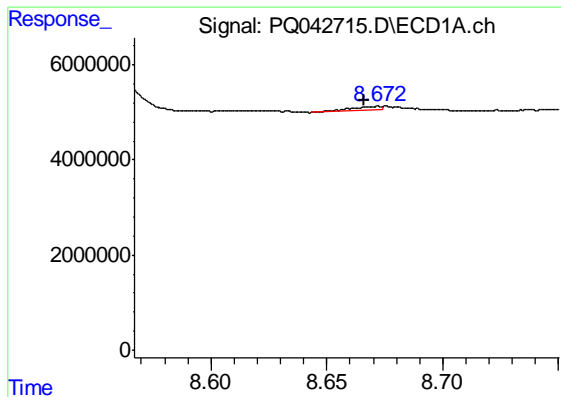
#27 AR-1254-2

R.T.: 8.275 min
 Delta R.T.: 0.003 min
 Response: 1468483
 Conc: 6.12 ng/ml



#27 AR-1254-2

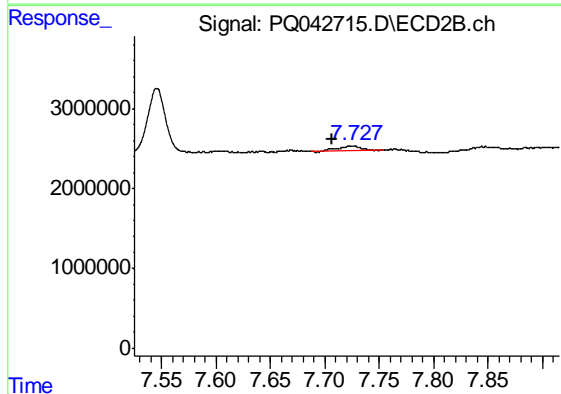
R.T.: 7.286 min
 Delta R.T.: 0.026 min
 Response: 21536147
 Conc: 106.51 ng/ml



#28 AR-1254-3

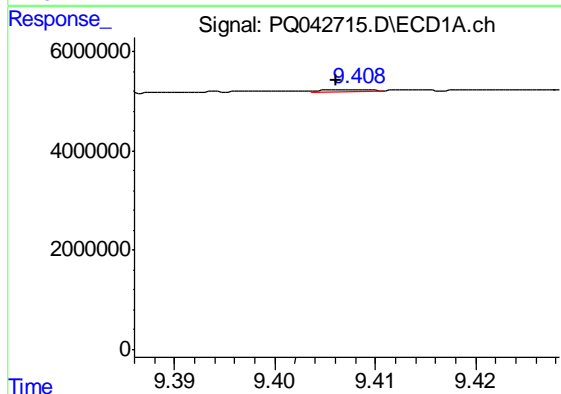
R.T.: 8.672 min
 Delta R.T.: 0.006 min
 Response: 757626
 Conc: 2.66 ng/ml

Instrument :
 ECD_Q
 ClientSampleId :
 ETQ21



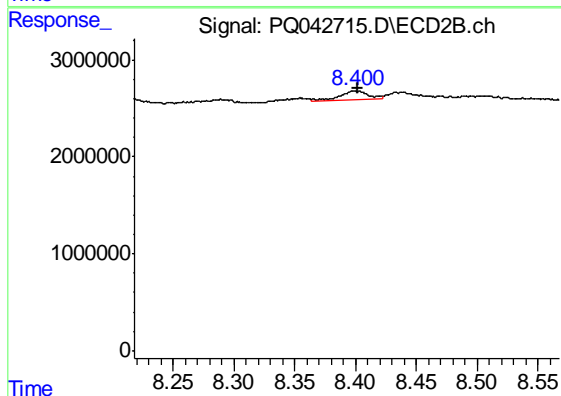
#28 AR-1254-3

R.T.: 7.727 min
 Delta R.T.: 0.020 min
 Response: 985694
 Conc: 2.80 ng/ml



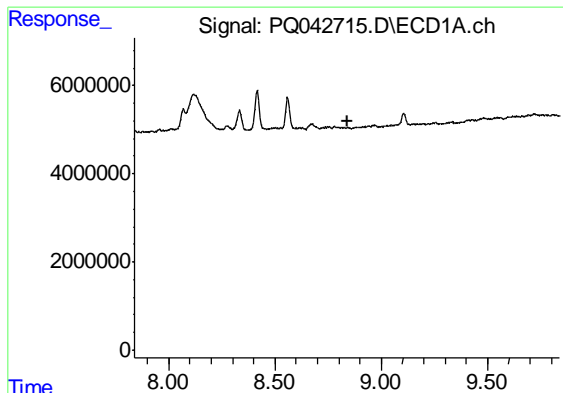
#30 AR-1254-5

R.T.: 9.409 min
 Delta R.T.: 0.002 min
 Response: 124886
 Conc: 0.48 ng/ml



#30 AR-1254-5

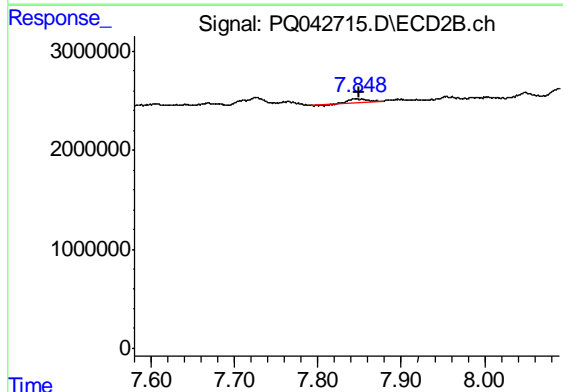
R.T.: 8.400 min
 Delta R.T.: -0.002 min
 Response: 1449058
 Conc: 3.99 ng/ml



#31 AR-1260-1

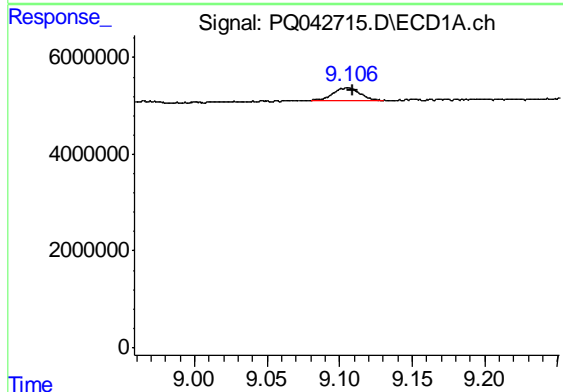
R.T.: 0.000 min
 Exp R.T. : 8.838 min
 Response: 0
 Conc: N.D.

Instrument :
 ECD_Q
 ClientSampleId :
 ETQ21



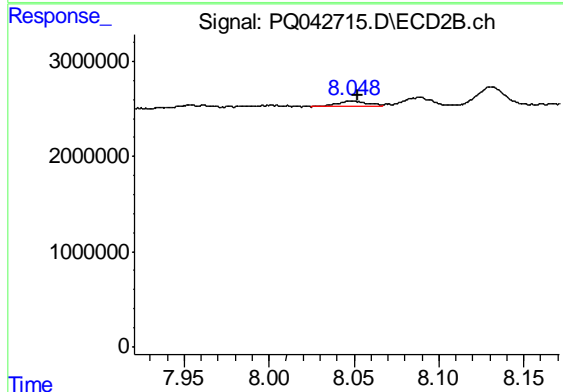
#31 AR-1260-1

R.T.: 7.848 min
 Delta R.T.: -0.002 min
 Response: 733966
 Conc: 3.60 ng/ml



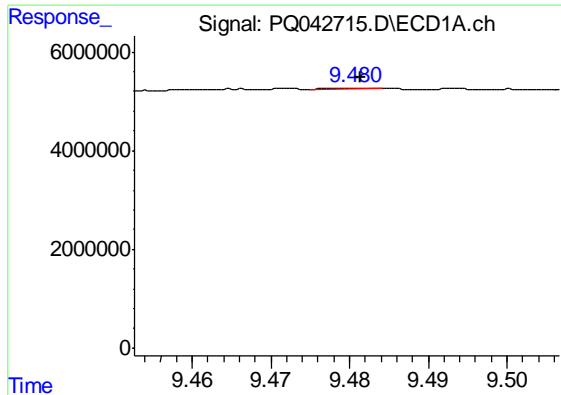
#32 AR-1260-2

R.T.: 9.106 min
 Delta R.T.: -0.003 min
 Response: 3471922
 Conc: 14.44 ng/ml



#32 AR-1260-2

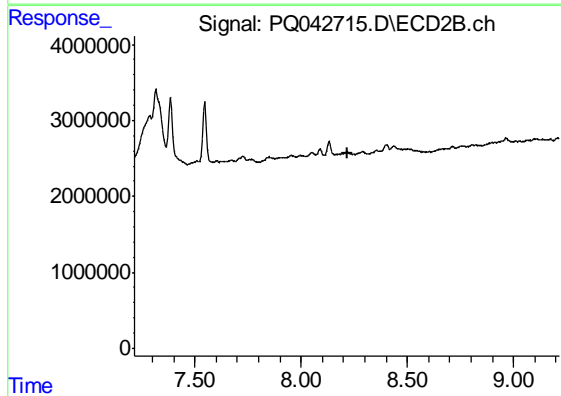
R.T.: 8.048 min
 Delta R.T.: -0.004 min
 Response: 729898
 Conc: 2.72 ng/ml



#33 AR-1260-3

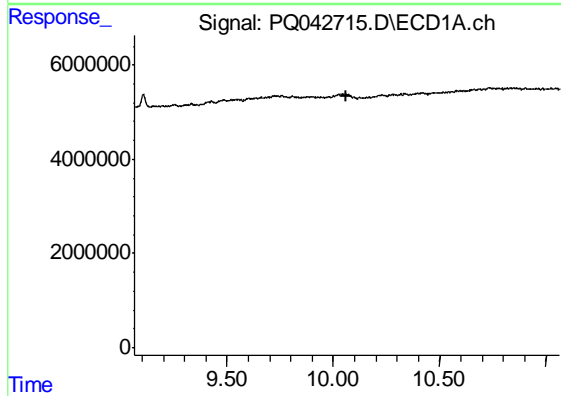
R.T.: 9.481 min
 Delta R.T.: 0.000 min
 Response: 52526
 Conc: 0.24 ng/ml

Instrument :
 ECD_Q
 ClientSampled :
 ETQ21



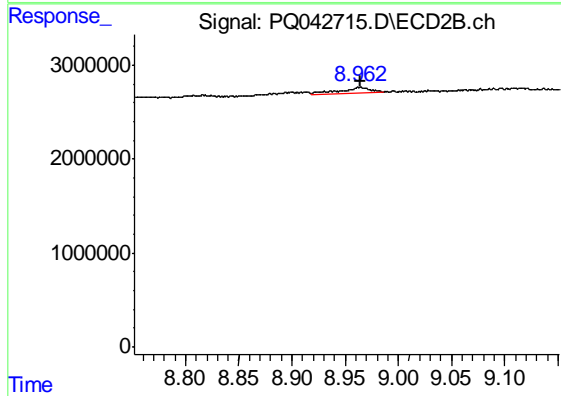
#33 AR-1260-3

R.T.: 0.000 min
 Exp R.T. : 8.216 min
 Response: 0
 Conc: N.D.



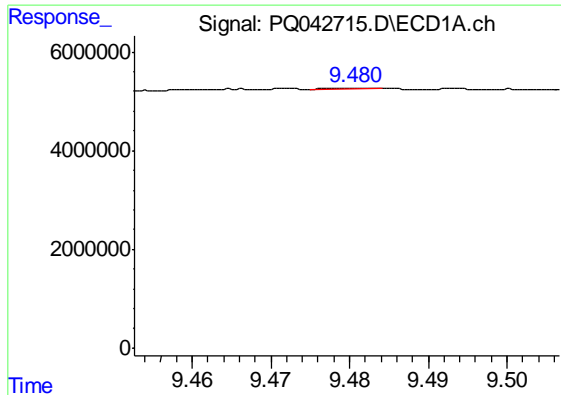
#35 AR-1260-5

R.T.: 0.000 min
 Exp R.T. : 10.063 min
 Response: 0
 Conc: N.D.



#35 AR-1260-5

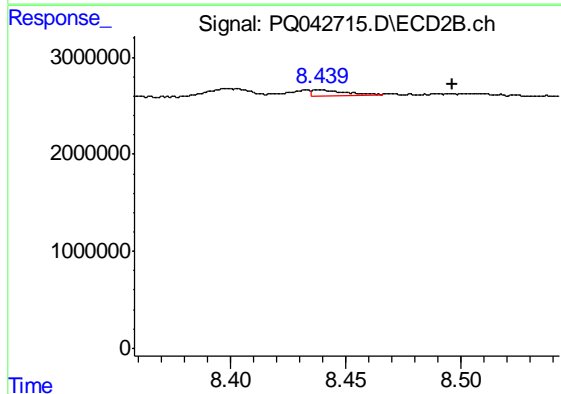
R.T.: 8.962 min
 Delta R.T.: -0.003 min
 Response: 1178088
 Conc: 1.89 ng/ml



#36 AR-1262-1

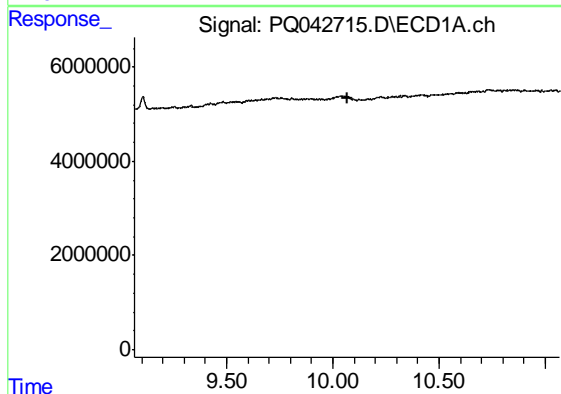
R.T.: 9.481 min
 Delta R.T.: -0.063 min
 Response: 52526
 Conc: 0.36 ng/ml

Instrument :
 ECD_Q
 ClientSampleId :
 ETQ21



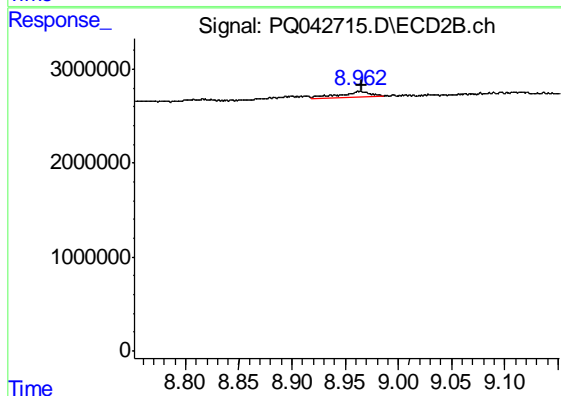
#36 AR-1262-1

R.T.: 8.439 min
 Delta R.T.: -0.057 min
 Response: 509208
 Conc: 2.97 ng/ml



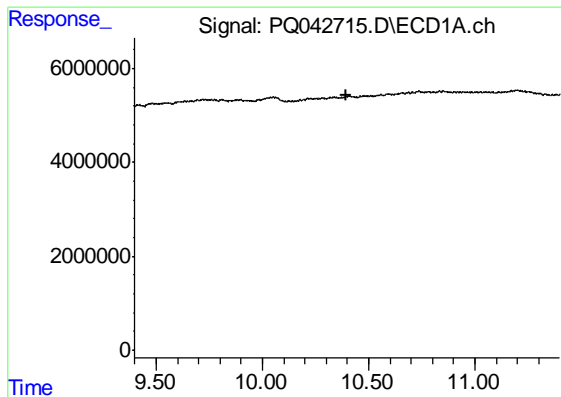
#37 AR-1262-2

R.T.: 0.000 min
 Exp R.T. : 10.066 min
 Response: 0
 Conc: N.D.



#37 AR-1262-2

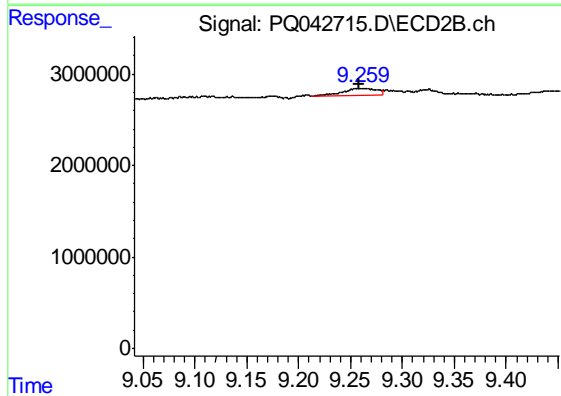
R.T.: 8.962 min
 Delta R.T.: -0.004 min
 Response: 1178088
 Conc: 1.41 ng/ml



#38 AR-1262-3

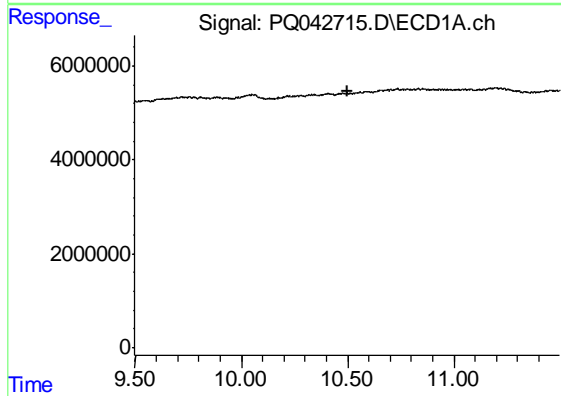
R.T.: 0.000 min
 Exp R.T. : 10.398 min
 Response: 0
 Conc: N.D.

Instrument :
 ECD_Q
 ClientSampled :
 ETQ21



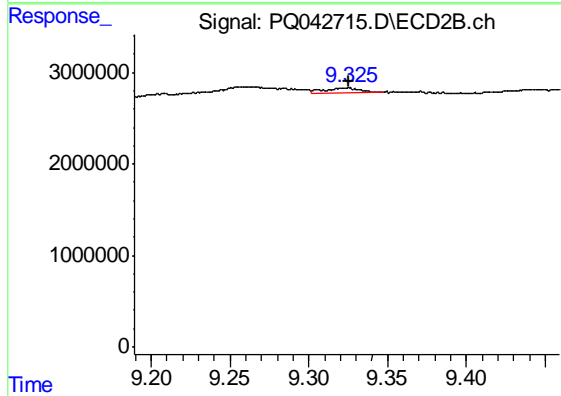
#38 AR-1262-3

R.T.: 9.259 min
 Delta R.T.: 0.001 min
 Response: 1831855
 Conc: 5.15 ng/ml



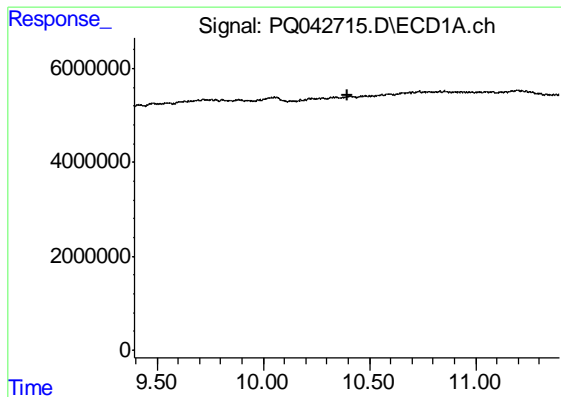
#39 AR-1262-4

R.T.: 0.000 min
 Exp R.T. : 10.497 min
 Response: 0
 Conc: N.D.



#39 AR-1262-4

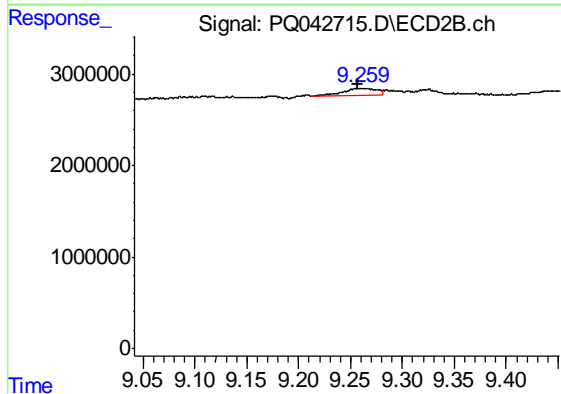
R.T.: 9.326 min
 Delta R.T.: 0.000 min
 Response: 794238
 Conc: 1.23 ng/ml



#41 AR-1268-1

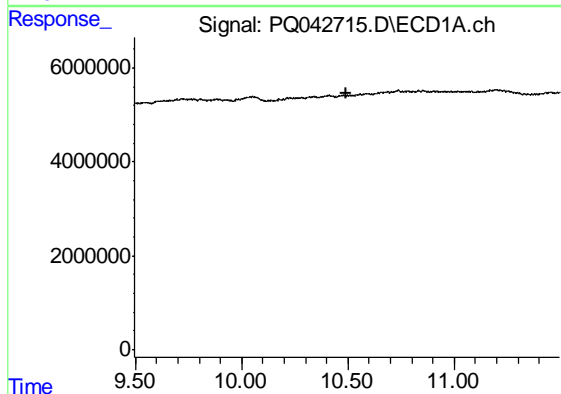
R.T.: 0.000 min
 Exp R.T. : 10.394 min
 Response: 0
 Conc: N.D.

Instrument :
 ECD_Q
 ClientSampleId :
 ETQ21



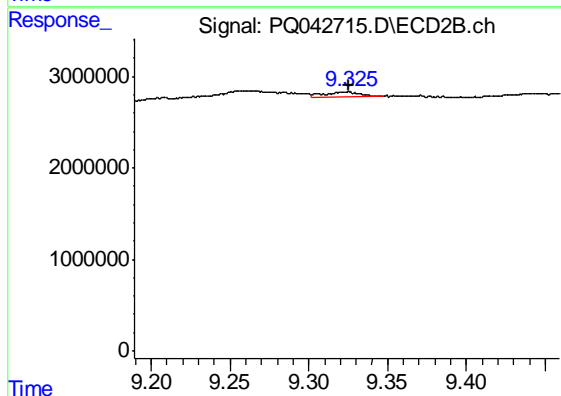
#41 AR-1268-1

R.T.: 9.259 min
 Delta R.T.: 0.002 min
 Response: 1831855
 Conc: 1.82 ng/ml



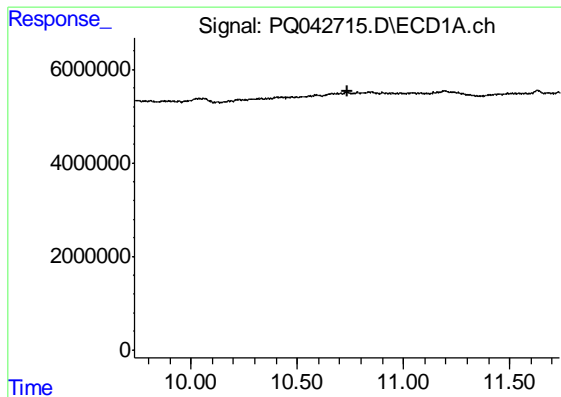
#42 AR-1268-2

R.T.: 0.000 min
 Exp R.T. : 10.495 min
 Response: 0
 Conc: N.D.



#42 AR-1268-2

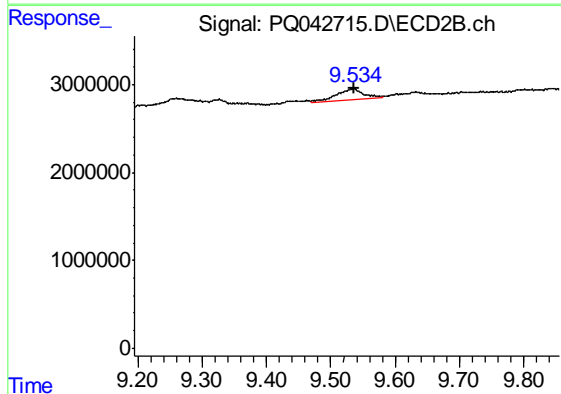
R.T.: 9.326 min
 Delta R.T.: 0.000 min
 Response: 794238
 Conc: 0.85 ng/ml



#43 AR-1268-3

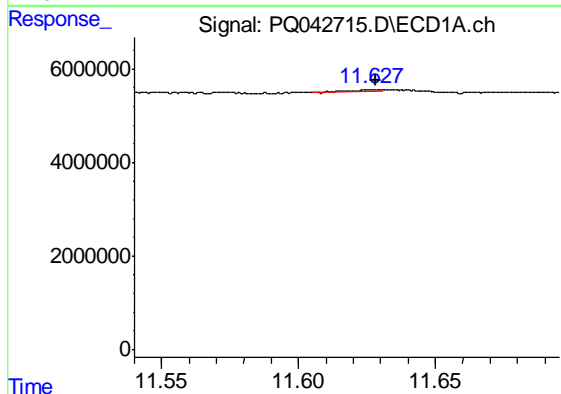
R.T.: 0.000 min
 Exp R.T. : 10.734 min
 Response: 0
 Conc: N.D.

Instrument :
 ECD_Q
 ClientSampled :
 ETQ21



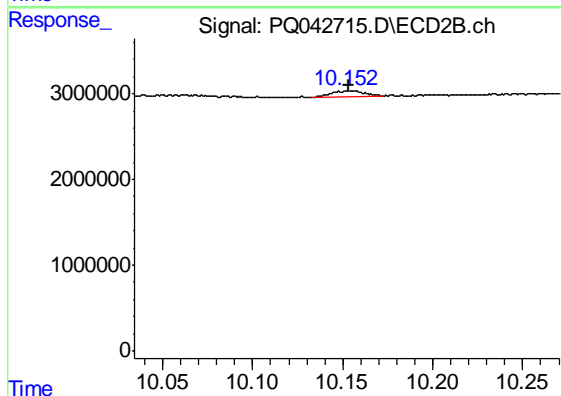
#43 AR-1268-3

R.T.: 9.535 min
 Delta R.T.: 0.000 min
 Response: 3643432
 Conc: 4.57 ng/ml



#45 AR-1268-5

R.T.: 11.627 min
 Delta R.T.: -0.002 min
 Response: 279940
 Conc: 0.10 ng/ml



#45 AR-1268-5

R.T.: 10.153 min
 Delta R.T.: 0.000 min
 Response: 851146
 Conc: 0.33 ng/ml