

Data Path : Z:\pestpcbsrv\HPCHEM1\ECD_Q\Data\PQ082619\
 Data File : PQ042891.D
 Signal(s) : Signal #1: ECD1A.ch Signal #2: ECD2B.ch
 Acq On : 25 Aug 2019 13:38
 Operator : SM\AJ
 Sample : AR1660ICC800
 Misc :
 ALS Vial : 6 Sample Multiplier: 1

Instrument :
 ECD_Q
 ClientSampleId :
 AR1660401

Integration File signal 1: autoint1.e
 Integration File signal 2: autoint2.e
 Quant Time: Aug 26 02:14:02 2019
 Quant Method : Z:\pestpcbsrv\HPCHEM1\ECD_Q\Method\PQ082619CLP.M
 Quant Title : GC EXTRACTABLES
 QLast Update : Mon Aug 26 02:12:06 2019
 Response via : Initial Calibration
 Integrator: ChemStation

Volume Inj. : 1 µl
 Signal #1 Phase : ZB MR1 Signal #2 Phase: ZB MR2
 Signal #1 Info : 30Mx0.32mmx 0.5µm Signal #2 Info : 30M x 0.32mm x 0.25µm

Compound	RT#1	RT#2	Resp#1	Resp#2	ng/ml	ng/ml

System Monitoring Compounds						
1) SA Tetrachlo...	5.636	4.695	117.1E6	105.5E6	42.410	46.044
2) SA Decachlor...	11.995	10.431	666.0E6	533.3E6	77.642	78.489
Target Compounds						
3) L1 AR-1016-1	7.083	6.147	88522027	84255062	868.472	837.576
4) L1 AR-1016-2	7.107	6.168	134.6E6	130.0E6	844.982	879.614
5) L1 AR-1016-3	7.179	6.382	85584179	66019758	868.349	854.907
6) L1 AR-1016-4	7.292	6.437	68524686	58397808	864.566	826.464
7) L1 AR-1016-5	7.626	6.689	69221923	74386277	847.643	829.508
31) L7 AR-1260-1	8.847	7.854	146.8E6	158.3E6	816.706	820.684
32) L7 AR-1260-2	9.118	8.059	192.0E6	212.6E6	827.086	851.799
33) L7 AR-1260-3	9.493	8.222	172.6E6	190.3E6	805.597	850.026
34) L7 AR-1260-4	9.733	8.720	198.4E6	179.3E6	832.441	843.640
35) L7 AR-1260-5	10.077	8.973	467.8E6	489.1E6	831.484	838.635

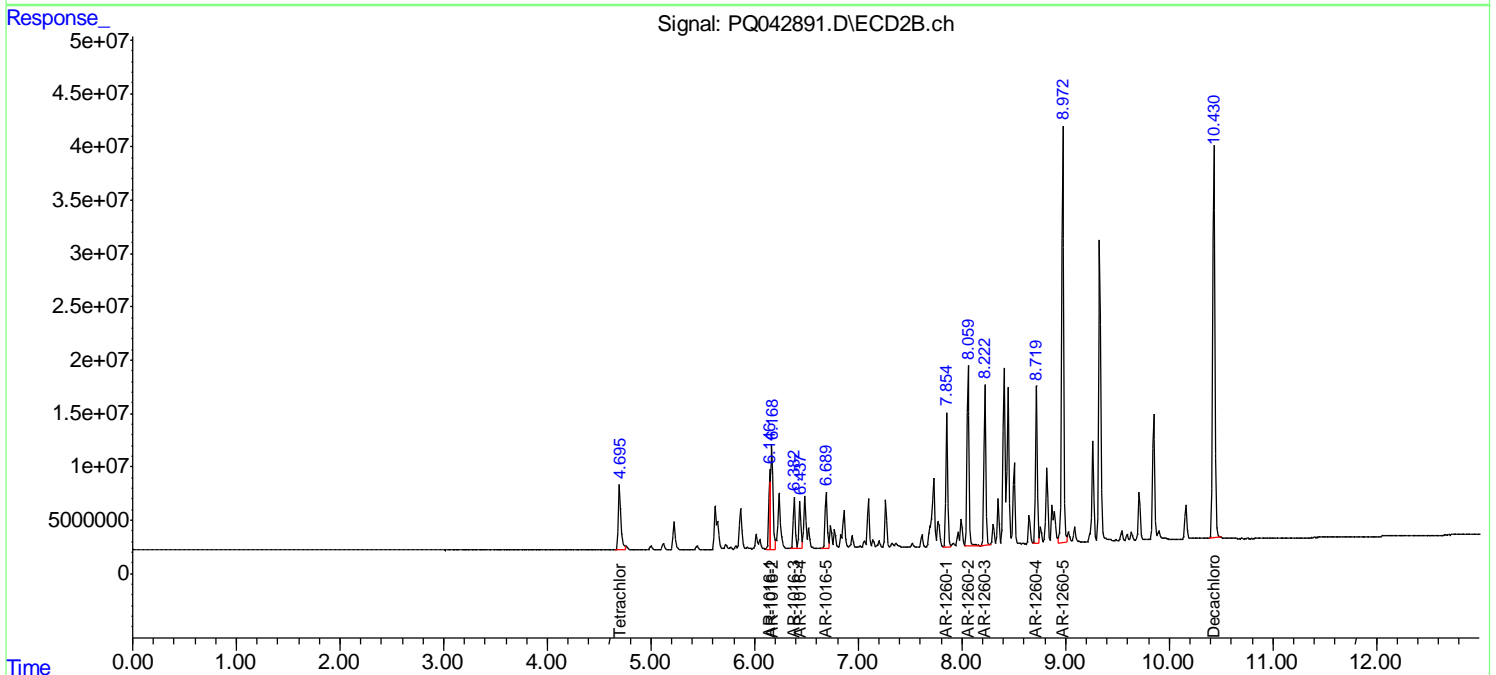
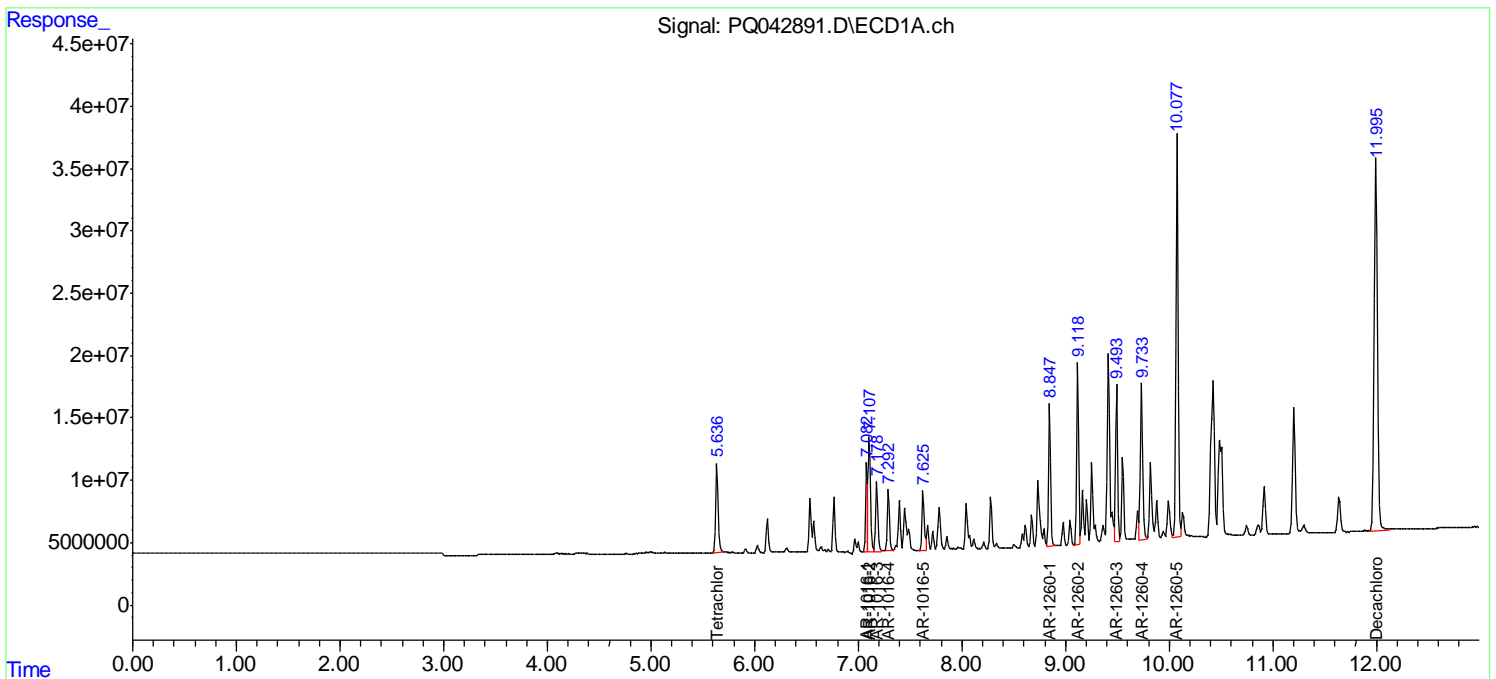
(f)=RT Delta > 1/2 Window (#)=Amounts differ by > 25% (m)=manual int.

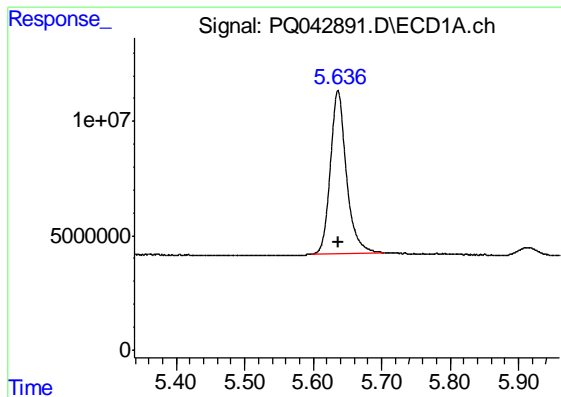
Data Path : Z:\pestpcbsrv\HPCHEM1\ECD_Q\Data\PQ082619\
 Data File : PQ042891.D
 Signal(s) : Signal #1: ECD1A.ch Signal #2: ECD2B.ch
 Acq On : 25 Aug 2019 13:38
 Operator : SM\AJ
 Sample : AR1660ICC800
 Misc :
 ALS Vial : 6 Sample Multiplier: 1

Instrument :
 ECD_Q
 Client Sampled :
 AR1660401

Integration File signal 1: autoint1.e
 Integration File signal 2: autoint2.e
 Quant Time: Aug 26 02:14:02 2019
 Quant Method : Z:\pestpcbsrv\HPCHEM1\ECD_Q\Method\PQ082619CLP.M
 Quant Title : GC EXTRACTABLES
 QLast Update : Mon Aug 26 02:12:06 2019
 Response via : Initial Calibration
 Integrator: ChemStation

Volume Inj. : 1 µl
 Signal #1 Phase : ZB MR1 Signal #2 Phase: ZB MR2
 Signal #1 Info : 30Mx0.32mmx 0.5µm Signal #2 Info : 30M x 0.32mm x 0.25µm

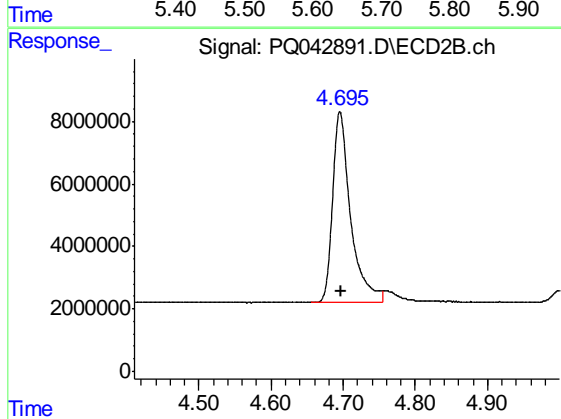




#1 Tetrachloro-m-xylene

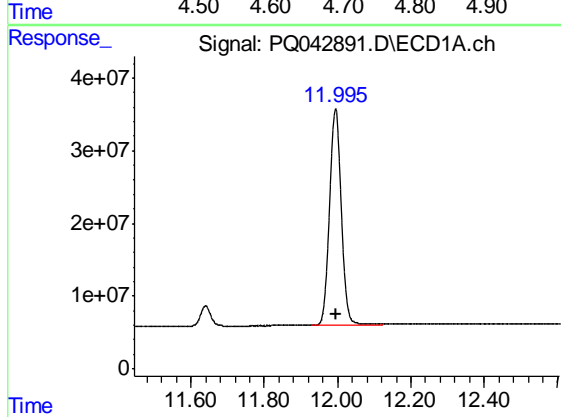
R.T.: 5.636 min
Delta R.T.: -0.002 min
Response: 117126405
Conc: 42.41 ng/ml

Instrument :
ECD_Q
ClientSampleId :
AR1660401



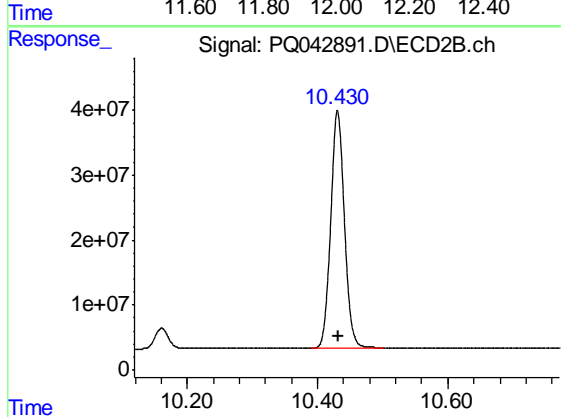
#1 Tetrachloro-m-xylene

R.T.: 4.695 min
Delta R.T.: -0.001 min
Response: 105538616
Conc: 46.04 ng/ml



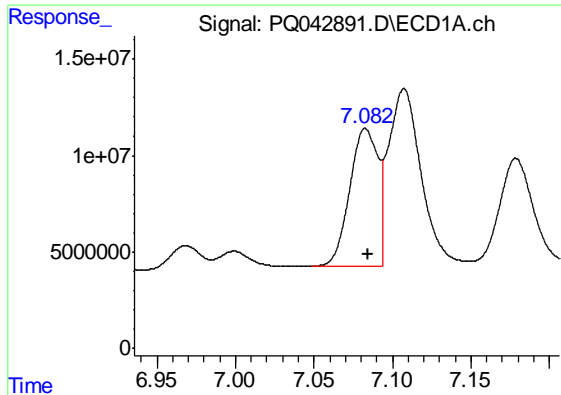
#2 Decachlorobiphenyl

R.T.: 11.995 min
Delta R.T.: -0.001 min
Response: 665958103
Conc: 77.64 ng/ml



#2 Decachlorobiphenyl

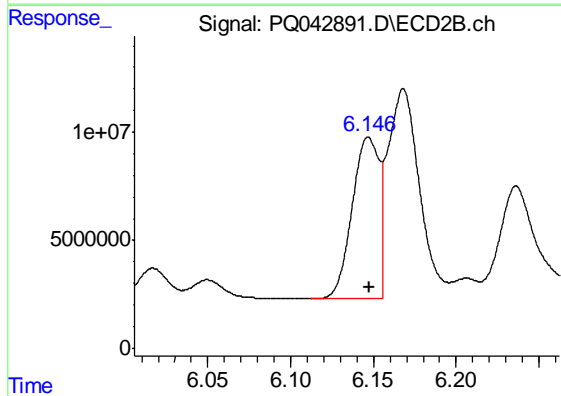
R.T.: 10.431 min
Delta R.T.: 0.000 min
Response: 533337602
Conc: 78.49 ng/ml



#3 AR-1016-1

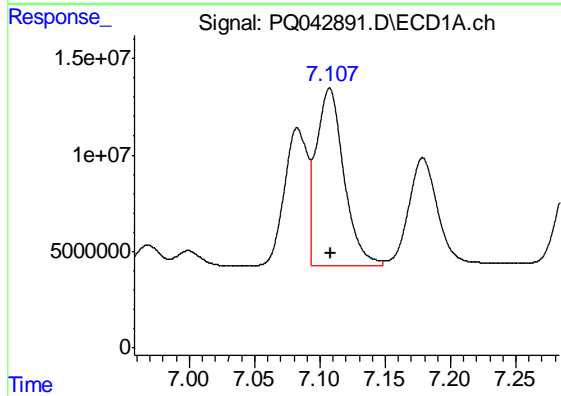
R.T.: 7.083 min
 Delta R.T.: -0.002 min
 Response: 88522027
 Conc: 868.47 ng/ml

Instrument :
 ECD_Q
 ClientSampleId :
 AR1660401



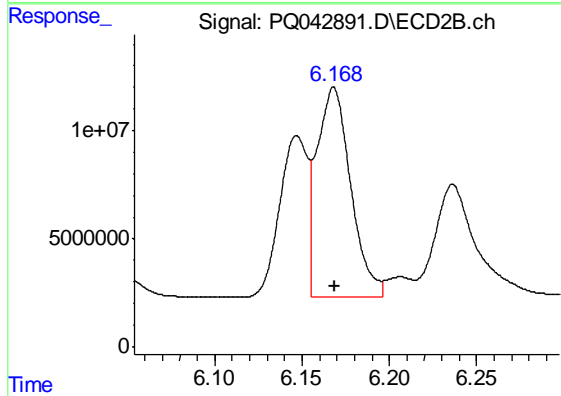
#3 AR-1016-1

R.T.: 6.147 min
 Delta R.T.: 0.000 min
 Response: 84255062
 Conc: 837.58 ng/ml



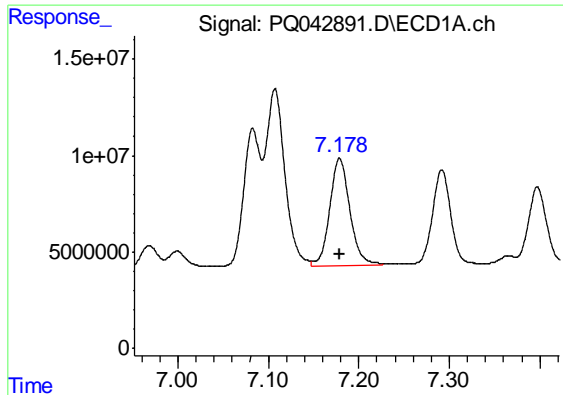
#4 AR-1016-2

R.T.: 7.107 min
 Delta R.T.: -0.001 min
 Response: 134580215
 Conc: 844.98 ng/ml



#4 AR-1016-2

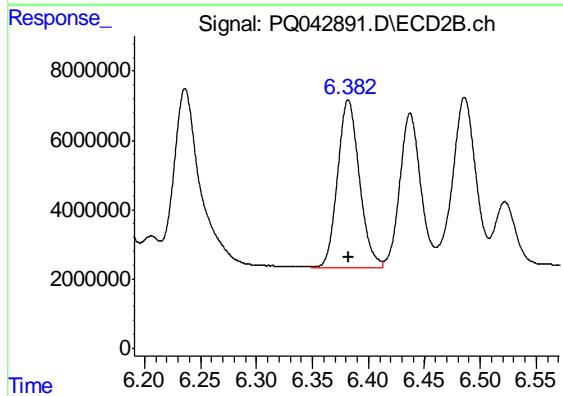
R.T.: 6.168 min
 Delta R.T.: 0.000 min
 Response: 129985968
 Conc: 879.61 ng/ml



#5 AR-1016-3

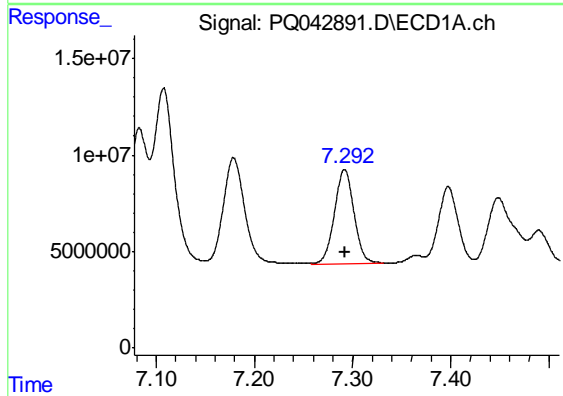
R.T.: 7.179 min
Delta R.T.: 0.000 min
Response: 85584179
Conc: 868.35 ng/ml

Instrument :
ECD_Q
ClientSampleId :
AR1660401



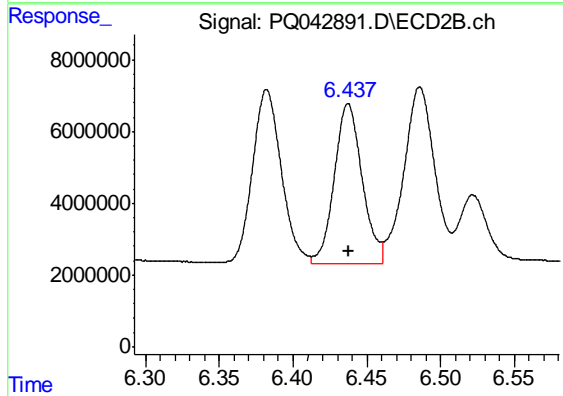
#5 AR-1016-3

R.T.: 6.382 min
Delta R.T.: 0.000 min
Response: 66019758
Conc: 854.91 ng/ml



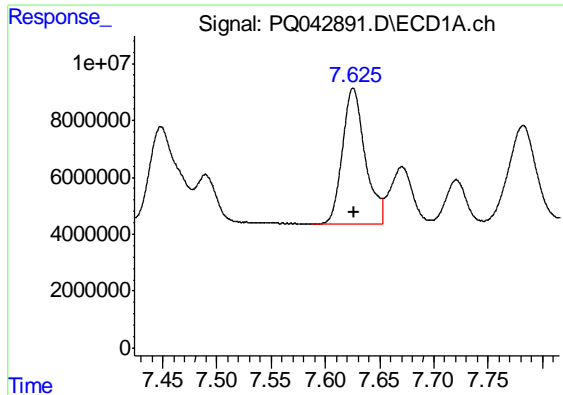
#6 AR-1016-4

R.T.: 7.292 min
Delta R.T.: 0.000 min
Response: 68524686
Conc: 864.57 ng/ml



#6 AR-1016-4

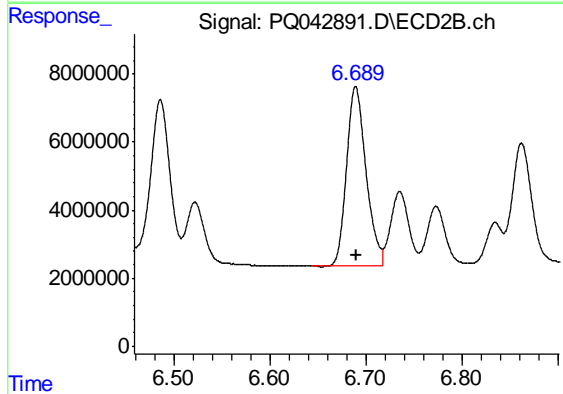
R.T.: 6.437 min
Delta R.T.: 0.000 min
Response: 58397808
Conc: 826.46 ng/ml



#7 AR-1016-5

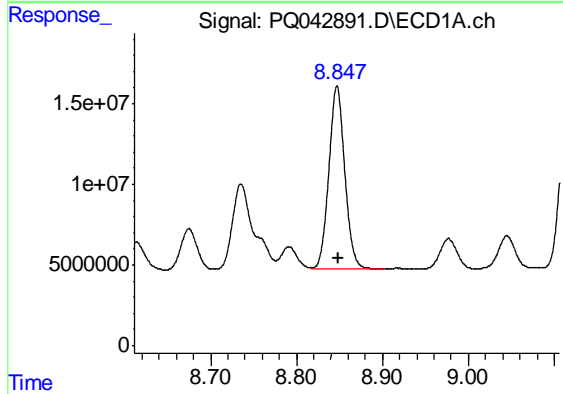
R.T.: 7.626 min
 Delta R.T.: 0.000 min
 Response: 69221923
 Conc: 847.64 ng/ml

Instrument :
 ECD_Q
 ClientSampleId :
 AR1660401



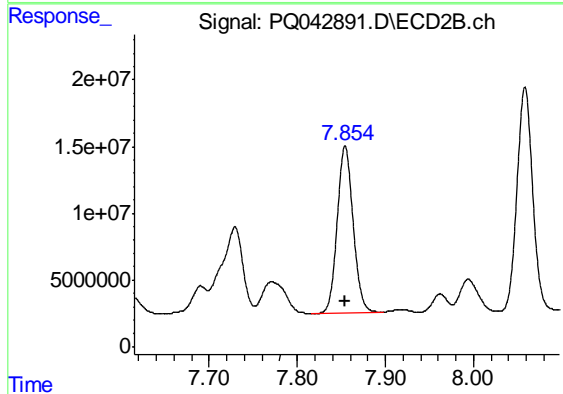
#7 AR-1016-5

R.T.: 6.689 min
 Delta R.T.: 0.000 min
 Response: 74386277
 Conc: 829.51 ng/ml



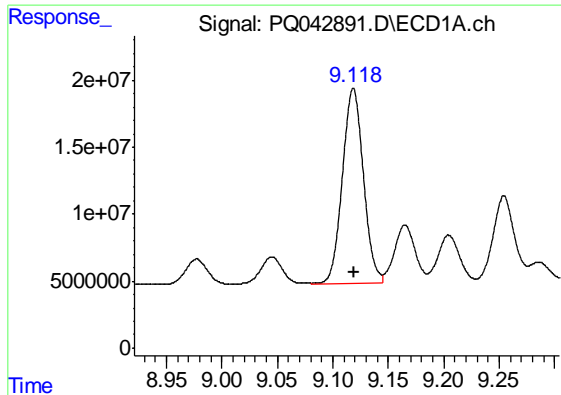
#31 AR-1260-1

R.T.: 8.847 min
 Delta R.T.: -0.002 min
 Response: 146843756
 Conc: 816.71 ng/ml



#31 AR-1260-1

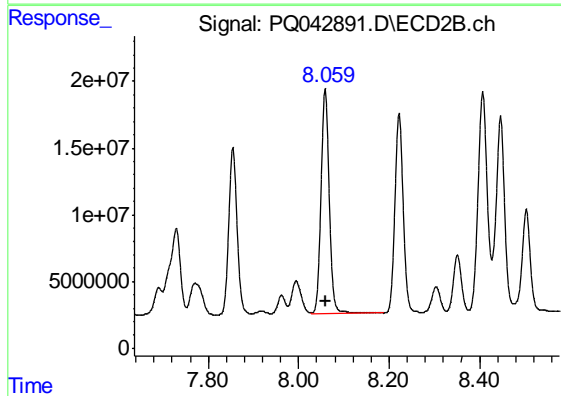
R.T.: 7.854 min
 Delta R.T.: 0.000 min
 Response: 158310360
 Conc: 820.68 ng/ml



#32 AR-1260-2

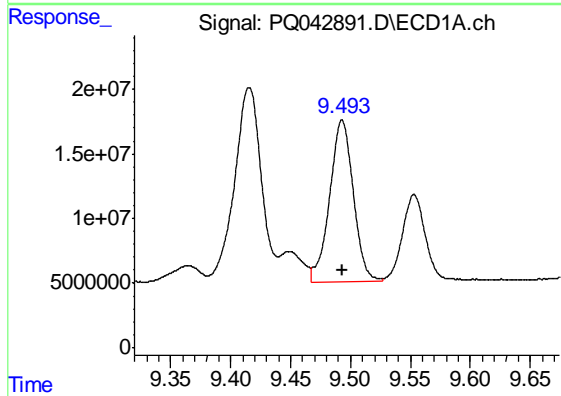
R.T.: 9.118 min
 Delta R.T.: 0.000 min
 Response: 192018450
 Conc: 827.09 ng/ml

Instrument :
 ECD_Q
 ClientSampleId :
 AR1660401



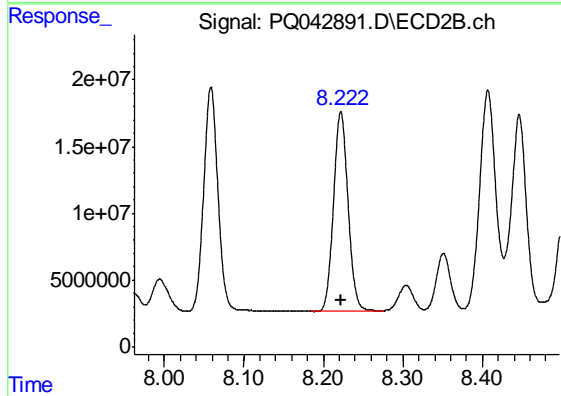
#32 AR-1260-2

R.T.: 8.059 min
 Delta R.T.: 0.000 min
 Response: 212619483
 Conc: 851.80 ng/ml



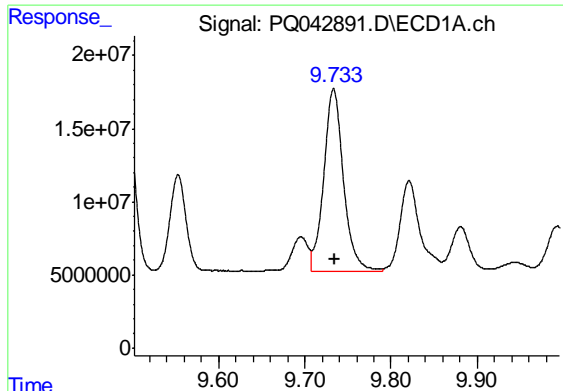
#33 AR-1260-3

R.T.: 9.493 min
 Delta R.T.: 0.000 min
 Response: 172595165
 Conc: 805.60 ng/ml



#33 AR-1260-3

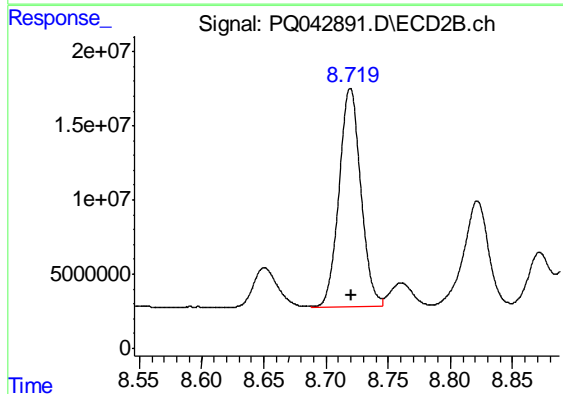
R.T.: 8.222 min
 Delta R.T.: 0.000 min
 Response: 190250348
 Conc: 850.03 ng/ml



#34 AR-1260-4

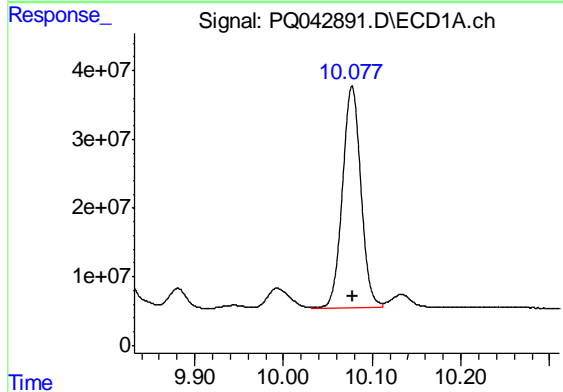
R.T.: 9.733 min
 Delta R.T.: 0.000 min
 Response: 198360697
 Conc: 832.44 ng/ml

Instrument :
 ECD_Q
 ClientSampled :
 AR1660401



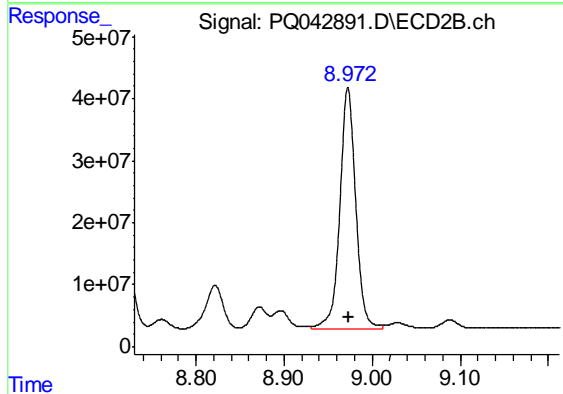
#34 AR-1260-4

R.T.: 8.720 min
 Delta R.T.: 0.000 min
 Response: 179299796
 Conc: 843.64 ng/ml



#35 AR-1260-5

R.T.: 10.077 min
 Delta R.T.: 0.000 min
 Response: 467835460
 Conc: 831.48 ng/ml



#35 AR-1260-5

R.T.: 8.973 min
 Delta R.T.: 0.000 min
 Response: 489106200
 Conc: 838.63 ng/ml