

Data Path : Z:\pestpcbsrv\HPCHEM1\ECD\_Q\Data\PQ082719\  
 Data File : PQ042975.D  
 Signal(s) : Signal #1: ECD1A.ch Signal #2: ECD2B.ch  
 Acq On : 26 Aug 2019 16:09  
 Operator : SM\AJ  
 Sample : AR1268CCC400  
 Misc :  
 ALS Vial : 6 Sample Multiplier: 1

Instrument :  
 ECD\_Q  
 ClientSampleId :  
 AR1268325

Integration File signal 1: autoint1.e  
 Integration File signal 2: autoint2.e  
 Quant Time: Aug 27 04:31:35 2019  
 Quant Method : Z:\pestpcbsrv\HPCHEM1\ECD\_Q\Method\PQ082619CLP.M  
 Quant Title : GC EXTRACTABLES  
 QLast Update : Mon Aug 26 05:38:16 2019  
 Response via : Initial Calibration  
 Integrator: ChemStation

Volume Inj. : 1 µl  
 Signal #1 Phase : ZB MR1 Signal #2 Phase: ZB MR2  
 Signal #1 Info : 30Mx0.32mmx 0.5µm Signal #2 Info : 30M x 0.32mm x 0.25µm

Compound	RT#1	RT#2	Resp#1	Resp#2	ng/ml	ng/ml
-----						
System Monitoring Compounds						
1) SA Tetrachlo...	5.634	4.694	53460070	49406147	19.973	21.345
2) SA Decachlor...	11.992	10.429	483.7E6	434.7E6	57.295	64.706
Target Compounds						
3) L1 AR-1016-1	0.000	6.147	0	67023	N.D.	0.679 #
4) L1 AR-1016-2	0.000	6.166	0	84256	N.D.	0.555 #
5) L1 AR-1016-3	0.000	6.383	0	799148	N.D.	10.632 #
6) L1 AR-1016-4	7.355	6.463	433705	407443	5.413	5.865
7) L1 AR-1016-5	0.000	6.689	0	971482	N.D.	10.782 #
9) L2 AR-1221-2	6.029	5.112	662189	357608	28.014	14.228 #
12) L3 AR-1232-2	6.760	6.166	985873	84256	24.986	1.006 #
13) L3 AR-1232-3	0.000	6.383	0	799148	N.D.	18.572 #
14) L3 AR-1232-4	7.355	6.484	433705	2576503	10.075	60.101 #
15) L3 AR-1232-5	7.395	6.689	942028	971482	32.928	21.475 #
16) L4 AR-1242-1	0.000	6.147	0	67023	N.D.	0.681 #
17) L4 AR-1242-2	0.000	6.166	0	84256	N.D.	0.567 #
18) L4 AR-1242-3	0.000	6.383	0	799148	N.D.	10.516 #
19) L4 AR-1242-4	7.355	6.484	433705	2576503	5.634	30.889 #
20) L4 AR-1242-5	8.109	7.097	2833650	823805	29.591	7.230 #
21) L5 AR-1248-1	0.000	6.147	0	67023	N.D.	0.846 #
22) L5 AR-1248-2	7.395	6.463	942028	407443	8.323	3.442 #
23) L5 AR-1248-3	0.000	6.484	0	2576503	N.D.	21.331 #
24) L5 AR-1248-4	8.073	6.689	2333759	971482	14.403	6.633 #
25) L5 AR-1248-5	8.109	7.141	2833650	513863	18.082	3.299 #
26) L6 AR-1254-1	8.044	7.097	1446215	823805	8.655	3.359 #
27) L6 AR-1254-2	8.285	0.000	6073504	0	22.582	N.D. #
28) L6 AR-1254-3	8.684	7.708	6013011	225513	19.965	0.600 #
29) L6 AR-1254-4	8.975	7.960	2680567	264947	11.766	1.096 #
30) L6 AR-1254-5	9.396	8.408	2273506	82110	8.395	0.222 #
31) L7 AR-1260-1	8.813	0.000	6733604	0	37.585	N.D. #
32) L7 AR-1260-2	9.118	8.050	1285904	1663679	5.468	6.535
33) L7 AR-1260-3	9.491	8.223	47420812	3239181	221.919	14.217 #
34) L7 AR-1260-4	9.749	8.712	70267618	72551835	298.023	336.269
35) L7 AR-1260-5	10.074	8.970	27993932	30131725	49.123	51.673
36) L8 AR-1262-1	9.491	8.502	47420812	3468345	118.033	18.724 #
37) L8 AR-1262-2	10.074	8.970	27993932	30131725	35.000	34.885
38) L8 AR-1262-3	10.404	9.262	343.5E6	348.2E6	580.000	929.499 #
39) L8 AR-1262-4	10.504	9.329	335.0E6	335.5E6	672.565	488.693 #
40) L8 AR-1262-5	11.201	9.849	128.2E6	118.2E6	343.510	359.675
41) L9 AR-1268-1	10.404	9.262	343.5E6	348.2E6	319.616	325.361
42) L9 AR-1268-2	10.504	9.329	335.0E6	335.5E6	319.216	326.527
43) L9 AR-1268-3	10.745	9.540	304.7E6	289.1E6	318.309	327.684
44) L9 AR-1268-4	11.201	9.849	128.2E6	118.2E6	319.519	331.714
45) L9 AR-1268-5	11.637	10.159	1042.2E6	915.6E6	312.183	327.459

Data Path : Z:\pestpcbsrv\HPCHEM1\ECD\_Q\Data\PQ082719\  
Data File : PQ042975.D  
Signal(s) : Signal #1: ECD1A.ch Signal #2: ECD2B.ch  
Acq On : 26 Aug 2019 16:09  
Operator : SM\AJ  
Sample : AR1268CCC400  
Misc :  
ALS Vial : 6 Sample Multiplier: 1

Instrument :  
ECD\_Q  
ClientSampleId :  
AR1268325

Integration File signal 1: autoint1.e  
Integration File signal 2: autoint2.e  
Quant Time: Aug 27 04:31:35 2019  
Quant Method : Z:\pestpcbsrv\HPCHEM1\ECD\_Q\Method\PQ082619CLP.M  
Quant Title : GC EXTRACTABLES  
QLast Update : Mon Aug 26 05:38:16 2019  
Response via : Initial Calibration  
Integrator: ChemStation

Volume Inj. : 1 µl  
Signal #1 Phase : ZB MR1 Signal #2 Phase: ZB MR2  
Signal #1 Info : 30Mx0.32mmx 0.5µm Signal #2 Info : 30M x 0.32mm x 0.25µm

Compound	RT#1	RT#2	Resp#1	Resp#2	ng/ml	ng/ml
----------	------	------	--------	--------	-------	-------

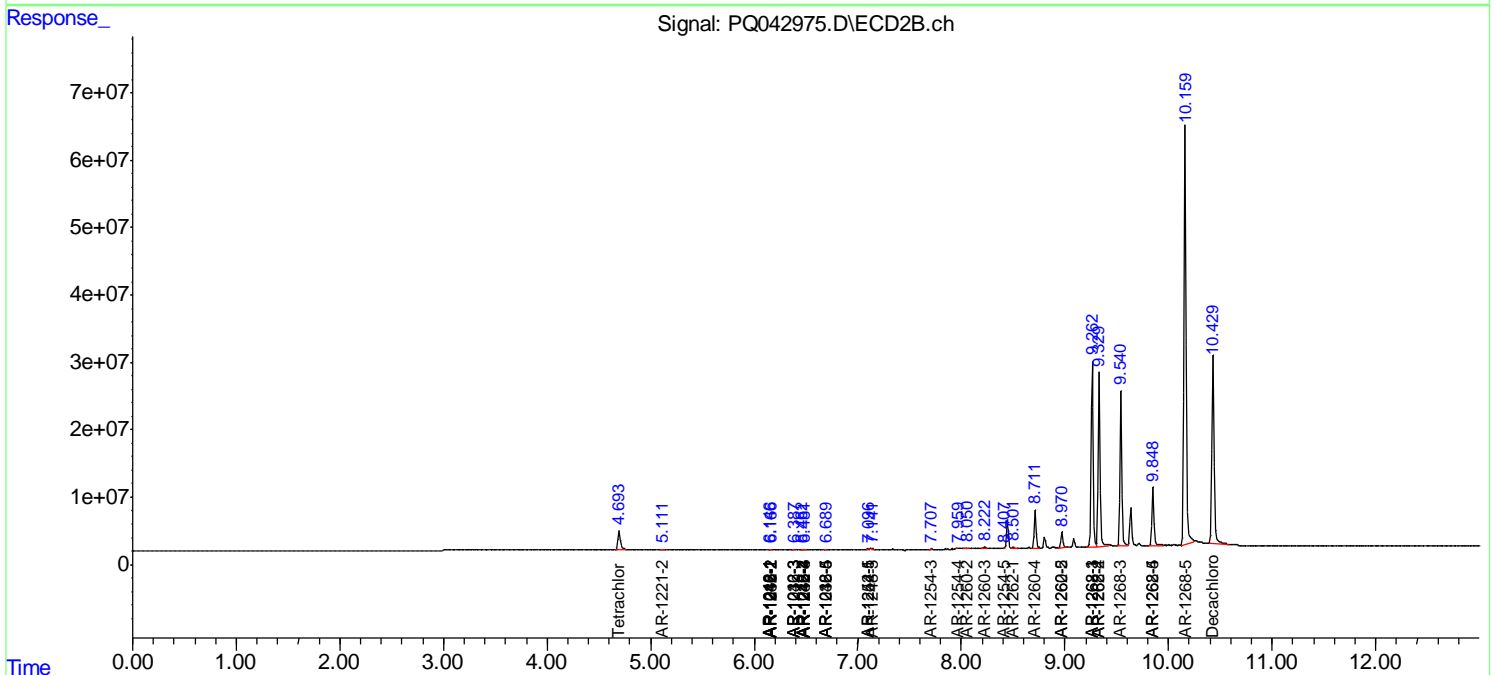
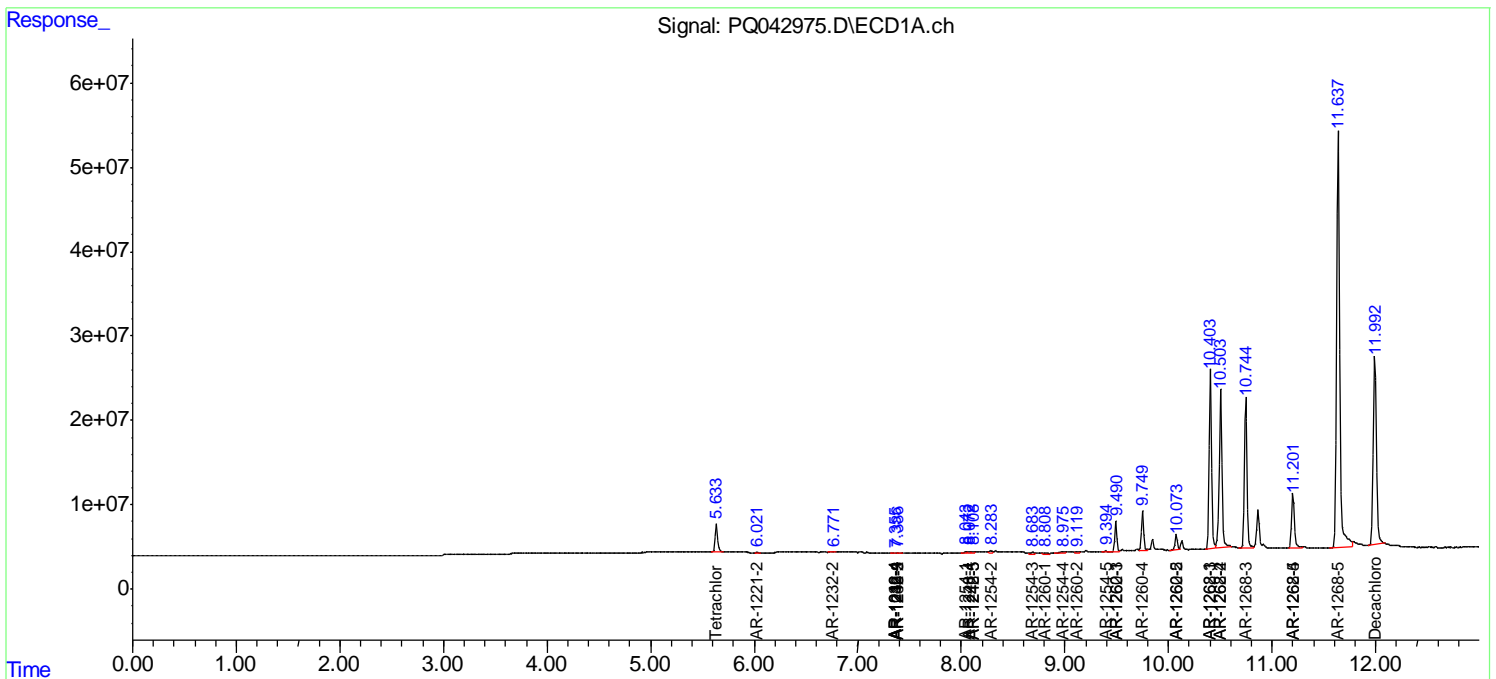
(f)=RT Delta > 1/2 Window (#)=Amounts differ by > 25% (m)=manual int.

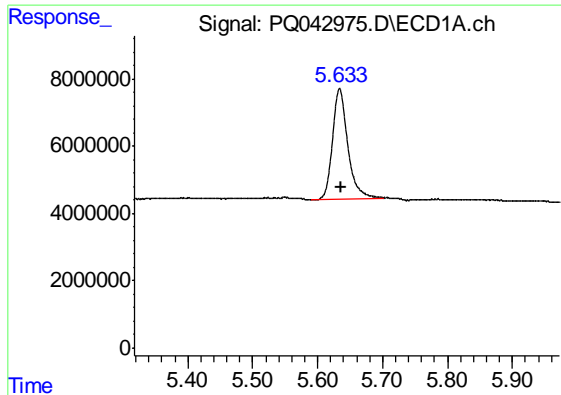
Data Path : Z:\pestpcbsrv\HPCHEM1\ECD\_Q\Data\PQ082719\  
 Data File : PQ042975.D  
 Signal(s) : Signal #1: ECD1A.ch Signal #2: ECD2B.ch  
 Acq On : 26 Aug 2019 16:09  
 Operator : SM\AJ  
 Sample : AR1268CCC400  
 Misc :  
 ALS Vial : 6 Sample Multiplier: 1

Instrument :  
 ECD\_Q  
 Client Sampled :  
 AR1268325

Integration File signal 1: autoint1.e  
 Integration File signal 2: autoint2.e  
 Quant Time: Aug 27 04:31:35 2019  
 Quant Method : Z:\pestpcbsrv\HPCHEM1\ECD\_Q\Method\PQ082619CLP.M  
 Quant Title : GC EXTRACTABLES  
 QLast Update : Mon Aug 26 05:38:16 2019  
 Response via : Initial Calibration  
 Integrator: ChemStation

Volume Inj. : 1 µl  
 Signal #1 Phase : ZB MR1 Signal #2 Phase: ZB MR2  
 Signal #1 Info : 30Mx0.32mmx 0.5µm Signal #2 Info : 30M x 0.32mm x 0.25µm

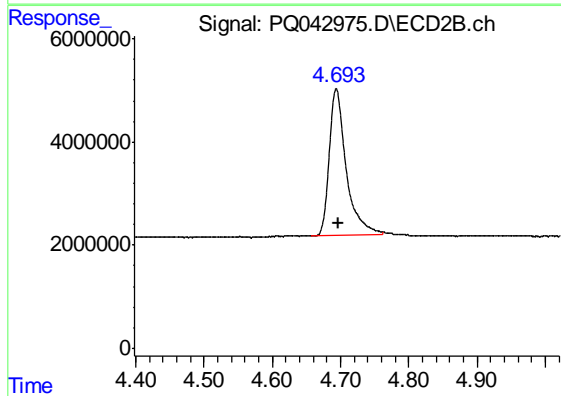




#1 Tetrachloro-m-xylene

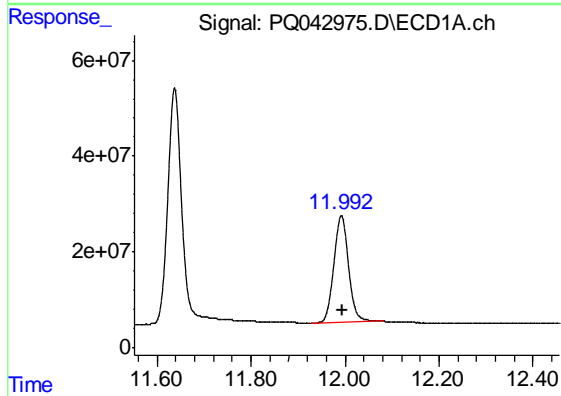
R.T.: 5.634 min  
 Delta R.T.: -0.002 min  
 Response: 53460070  
 Conc: 19.97 ng/ml

Instrument :  
 ECD\_Q  
 ClientSampleId :  
 AR1268325



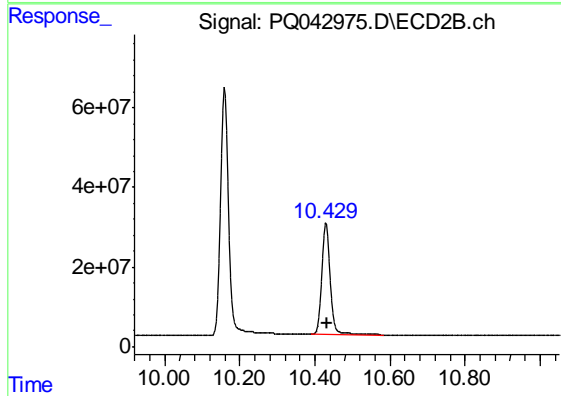
#1 Tetrachloro-m-xylene

R.T.: 4.694 min  
 Delta R.T.: -0.003 min  
 Response: 49406147  
 Conc: 21.34 ng/ml



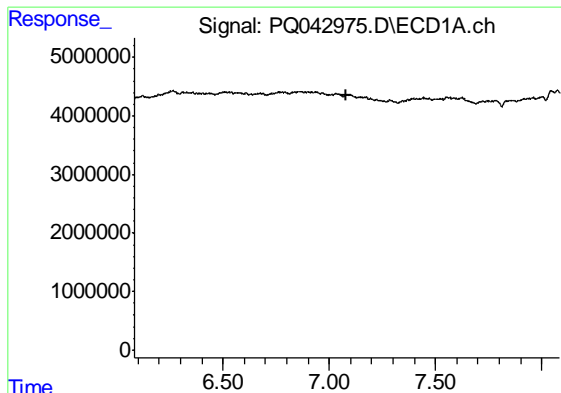
#2 Decachlorobiphenyl

R.T.: 11.992 min  
 Delta R.T.: -0.001 min  
 Response: 483691513  
 Conc: 57.29 ng/ml



#2 Decachlorobiphenyl

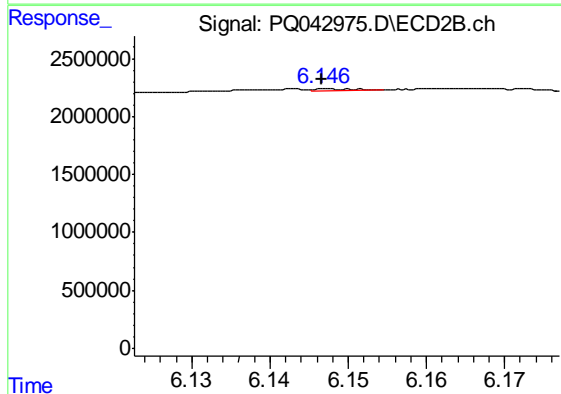
R.T.: 10.429 min  
 Delta R.T.: -0.001 min  
 Response: 434675577  
 Conc: 64.71 ng/ml



#3 AR-1016-1

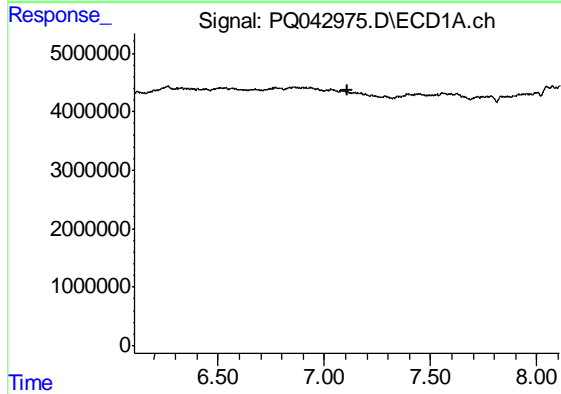
R.T.: 0.000 min  
 Exp R.T. : 7.083 min  
 Response: 0  
 Conc: N.D.

Instrument :  
 ECD\_Q  
 ClientSampleId :  
 AR1268325



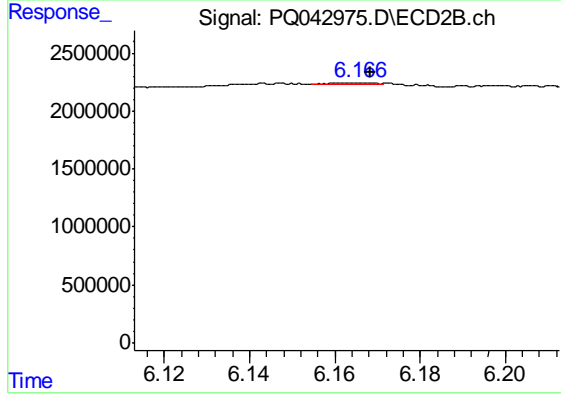
#3 AR-1016-1

R.T.: 6.147 min  
 Delta R.T.: 0.000 min  
 Response: 67023  
 Conc: 0.68 ng/ml



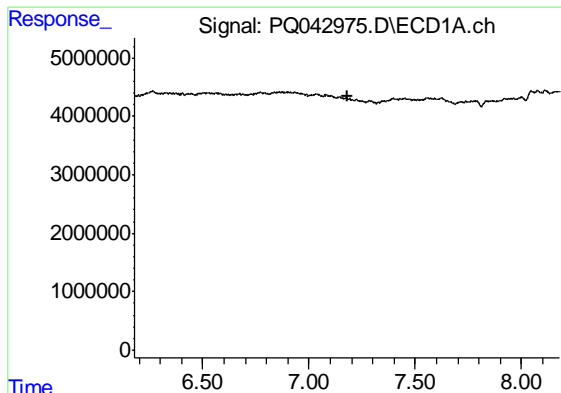
#4 AR-1016-2

R.T.: 0.000 min  
 Exp R.T. : 7.107 min  
 Response: 0  
 Conc: N.D.



#4 AR-1016-2

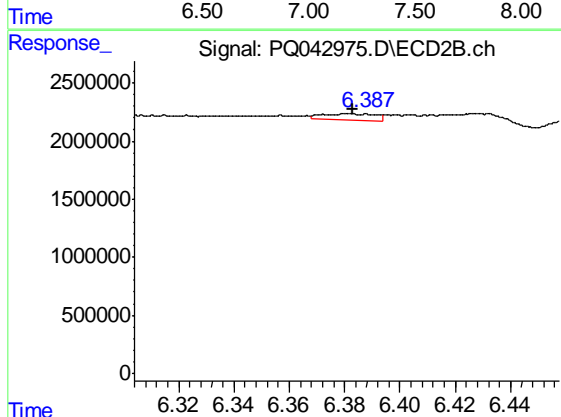
R.T.: 6.166 min  
 Delta R.T.: -0.002 min  
 Response: 84256  
 Conc: 0.56 ng/ml



#5 AR-1016-3

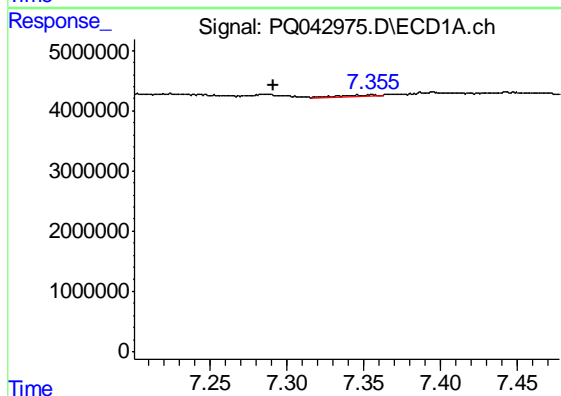
R.T.: 0.000 min  
 Exp R.T.: 7.178 min  
 Response: 0  
 Conc: N.D.

Instrument :  
 ECD\_Q  
 ClientSampleId :  
 AR1268325



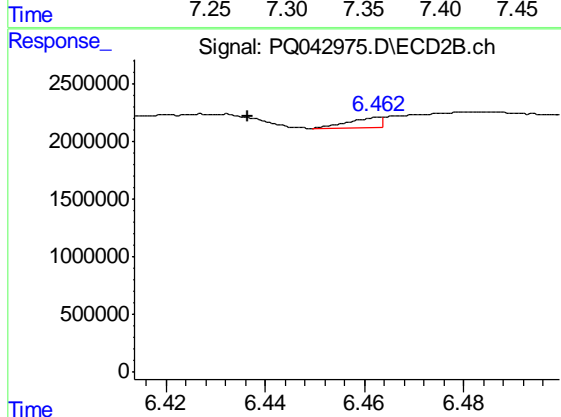
#5 AR-1016-3

R.T.: 6.383 min  
 Delta R.T.: 0.000 min  
 Response: 799148  
 Conc: 10.63 ng/ml



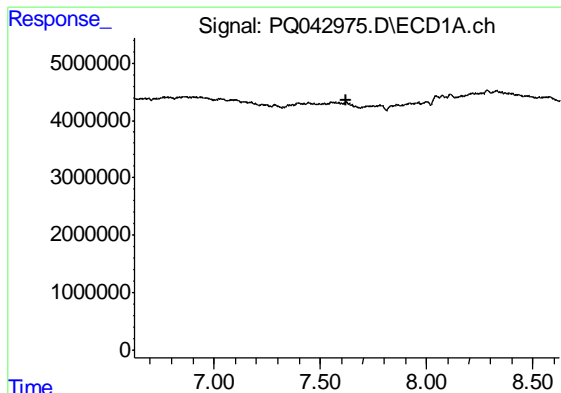
#6 AR-1016-4

R.T.: 7.355 min  
 Delta R.T.: 0.064 min  
 Response: 433705  
 Conc: 5.41 ng/ml



#6 AR-1016-4

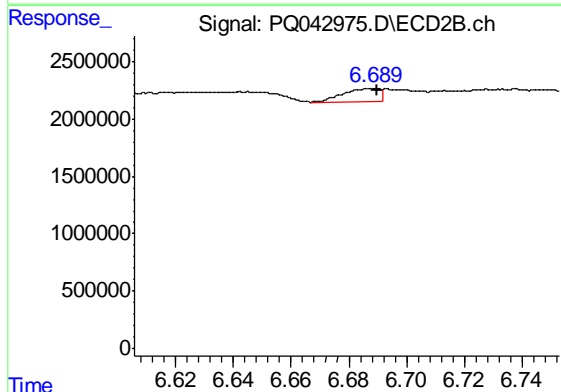
R.T.: 6.463 min  
 Delta R.T.: 0.026 min  
 Response: 407443  
 Conc: 5.86 ng/ml



#7 AR-1016-5

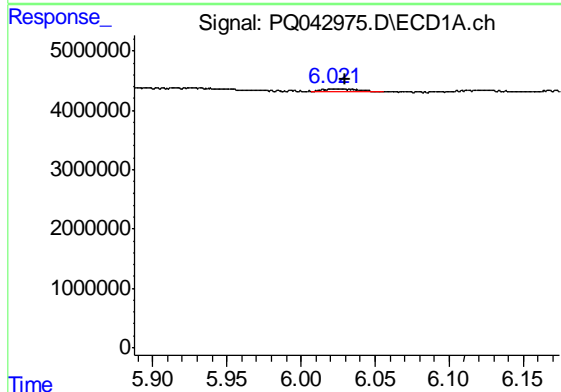
R.T.: 0.000 min  
 Exp R.T. : 7.625 min  
 Response: 0  
 Conc: N.D.

Instrument :  
 ECD\_Q  
 ClientSampleId :  
 AR1268325



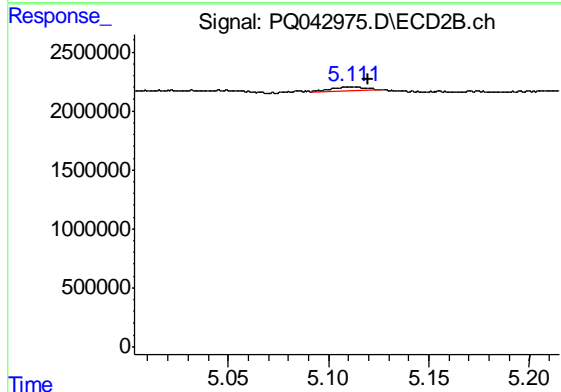
#7 AR-1016-5

R.T.: 6.689 min  
 Delta R.T.: 0.000 min  
 Response: 971482  
 Conc: 10.78 ng/ml



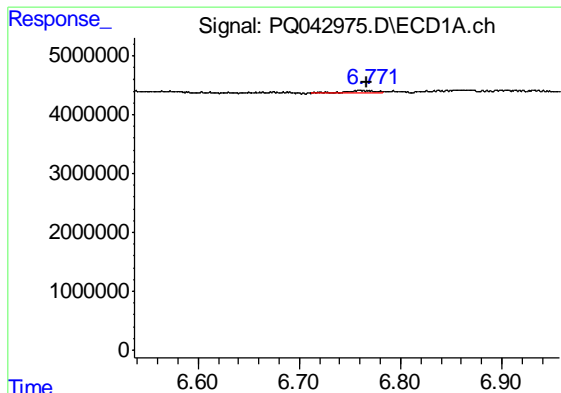
#9 AR-1221-2

R.T.: 6.029 min  
 Delta R.T.: 0.000 min  
 Response: 662189  
 Conc: 28.01 ng/ml



#9 AR-1221-2

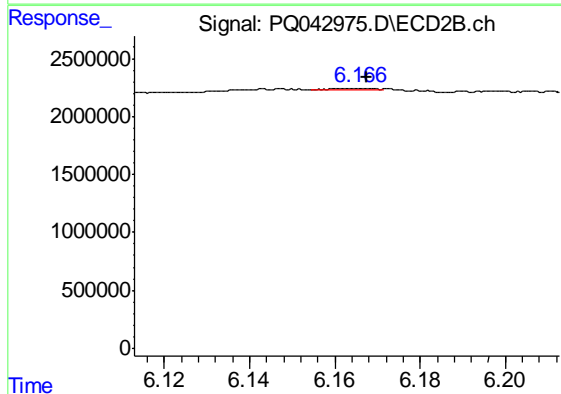
R.T.: 5.112 min  
 Delta R.T.: -0.008 min  
 Response: 357608  
 Conc: 14.23 ng/ml



#12 AR-1232-2

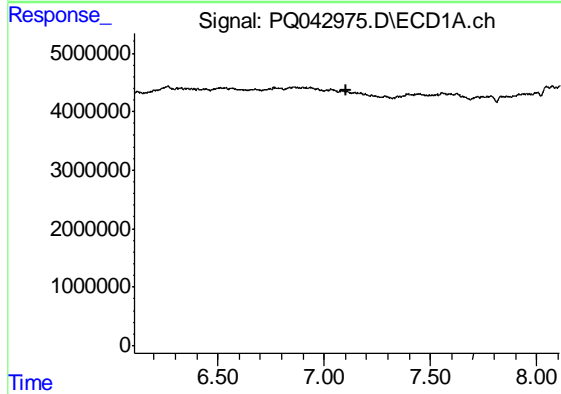
R.T.: 6.760 min  
 Delta R.T.: -0.006 min  
 Response: 985873  
 Conc: 24.99 ng/ml

Instrument :  
 ECD\_Q  
 ClientSampleId :  
 AR1268325



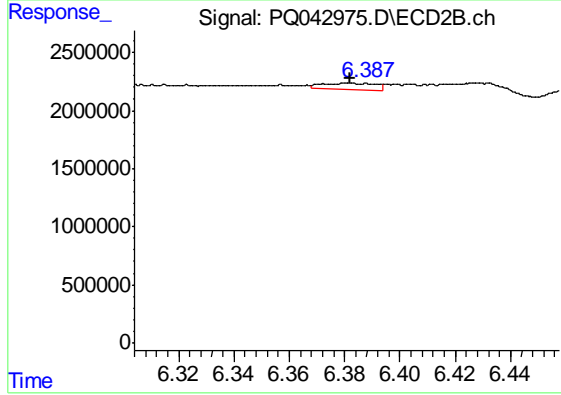
#12 AR-1232-2

R.T.: 6.166 min  
 Delta R.T.: -0.002 min  
 Response: 84256  
 Conc: 1.01 ng/ml



#13 AR-1232-3

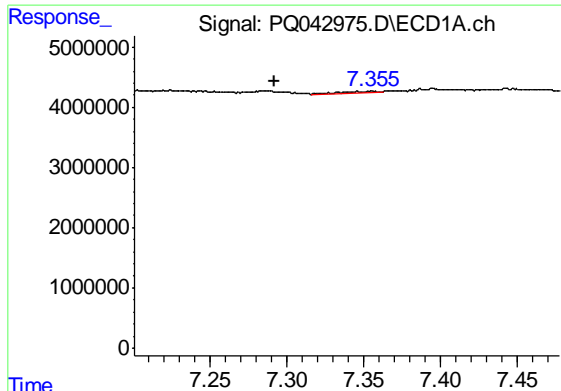
R.T.: 0.000 min  
 Exp R.T. : 7.107 min  
 Response: 0  
 Conc: N.D.



#13 AR-1232-3

R.T.: 6.383 min  
 Delta R.T.: 0.001 min  
 Response: 799148  
 Conc: 18.57 ng/ml

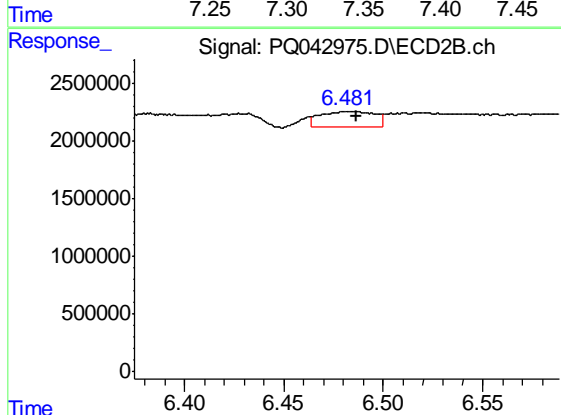




#14 AR-1232-4

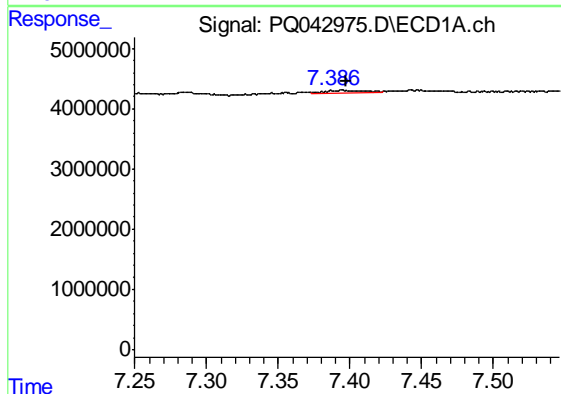
R.T.: 7.355 min  
Delta R.T.: 0.064 min  
Response: 433705  
Conc: 10.07 ng/ml

Instrument :  
ECD\_Q  
ClientSampleId :  
AR1268325



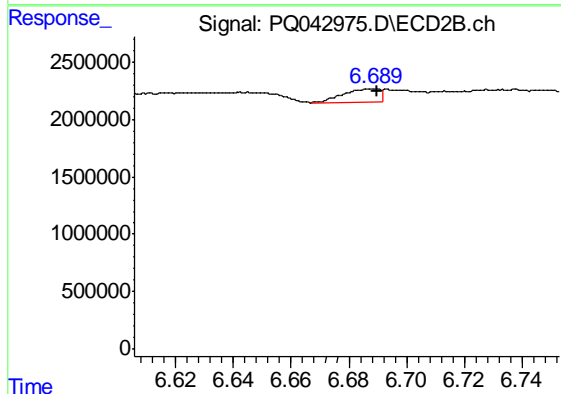
#14 AR-1232-4

R.T.: 6.484 min  
Delta R.T.: -0.002 min  
Response: 2576503  
Conc: 60.10 ng/ml



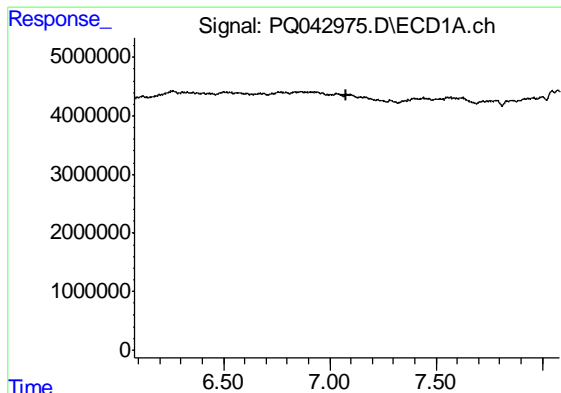
#15 AR-1232-5

R.T.: 7.395 min  
Delta R.T.: -0.003 min  
Response: 942028  
Conc: 32.93 ng/ml



#15 AR-1232-5

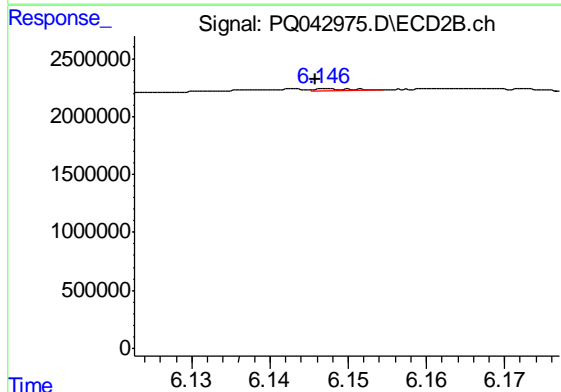
R.T.: 6.689 min  
Delta R.T.: 0.000 min  
Response: 971482  
Conc: 21.47 ng/ml



#16 AR-1242-1

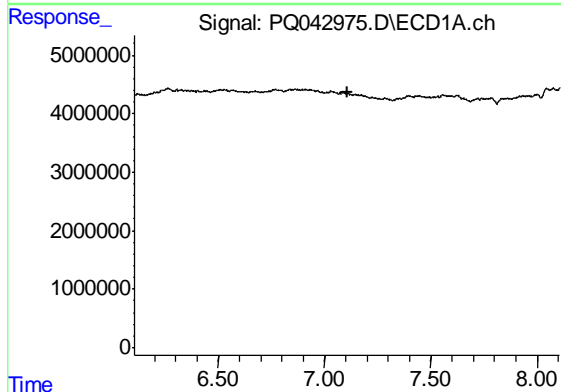
R.T.: 0.000 min  
 Exp R.T. : 7.081 min  
 Response: 0  
 Conc: N.D.

Instrument :  
 ECD\_Q  
 ClientSampleId :  
 AR1268325



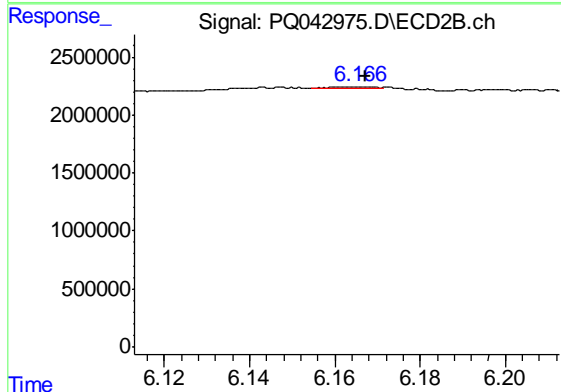
#16 AR-1242-1

R.T.: 6.147 min  
 Delta R.T.: 0.001 min  
 Response: 67023  
 Conc: 0.68 ng/ml



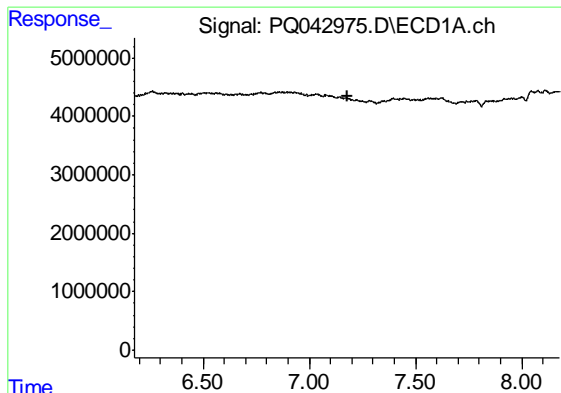
#17 AR-1242-2

R.T.: 0.000 min  
 Exp R.T. : 7.106 min  
 Response: 0  
 Conc: N.D.



#17 AR-1242-2

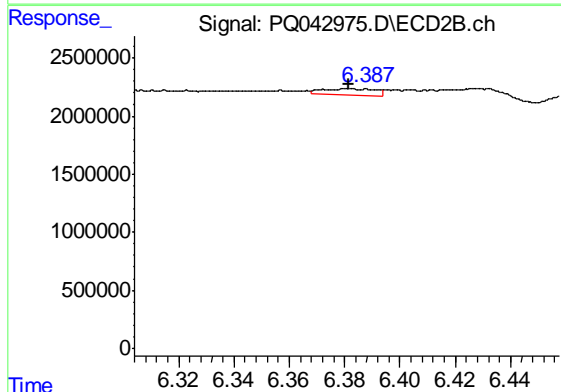
R.T.: 6.166 min  
 Delta R.T.: -0.001 min  
 Response: 84256  
 Conc: 0.57 ng/ml



#18 AR-1242-3

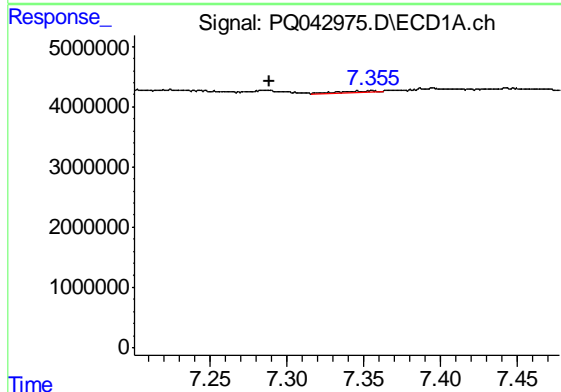
R.T.: 0.000 min  
 Exp R.T. : 7.178 min  
 Response: 0  
 Conc: N.D.

Instrument :  
 ECD\_Q  
 ClientSampleId :  
 AR1268325



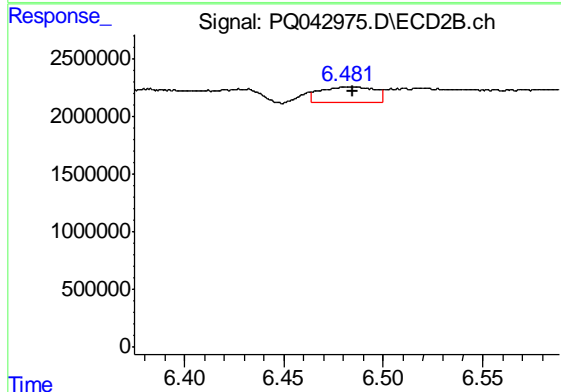
#18 AR-1242-3

R.T.: 6.383 min  
 Delta R.T.: 0.002 min  
 Response: 799148  
 Conc: 10.52 ng/ml



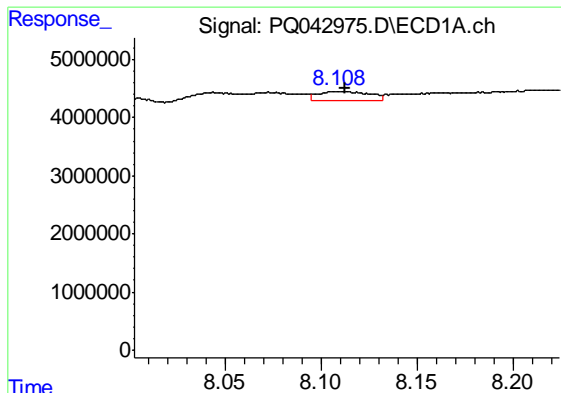
#19 AR-1242-4

R.T.: 7.355 min  
 Delta R.T.: 0.067 min  
 Response: 433705  
 Conc: 5.63 ng/ml



#19 AR-1242-4

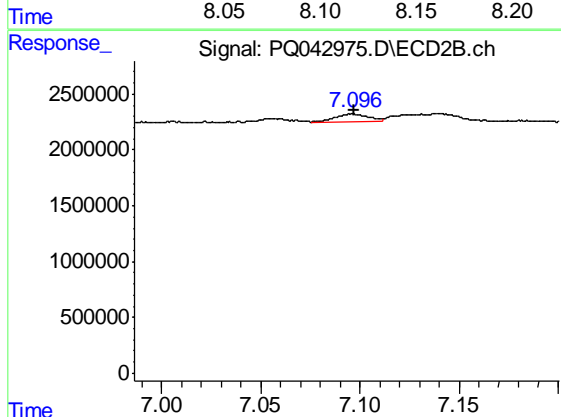
R.T.: 6.484 min  
 Delta R.T.: 0.000 min  
 Response: 2576503  
 Conc: 30.89 ng/ml



#20 AR-1242-5

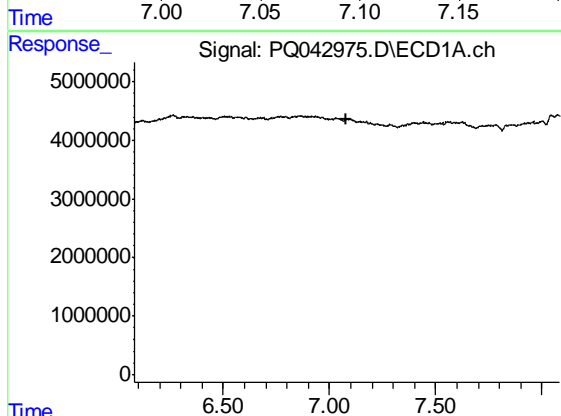
R.T.: 8.109 min  
 Delta R.T.: -0.003 min  
 Response: 2833650  
 Conc: 29.59 ng/ml

Instrument :  
 ECD\_Q  
 ClientSampleId :  
 AR1268325



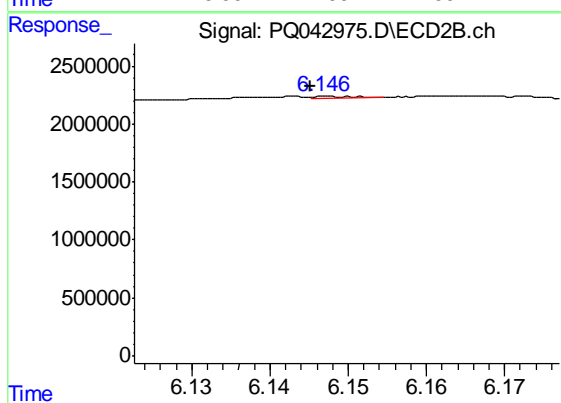
#20 AR-1242-5

R.T.: 7.097 min  
 Delta R.T.: 0.000 min  
 Response: 823805  
 Conc: 7.23 ng/ml



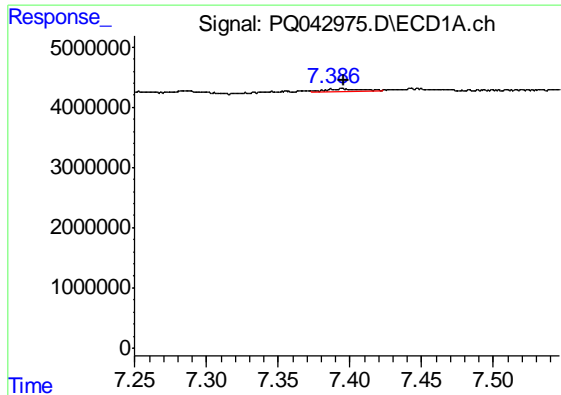
#21 AR-1248-1

R.T.: 0.000 min  
 Exp R.T. : 7.082 min  
 Response: 0  
 Conc: N.D.



#21 AR-1248-1

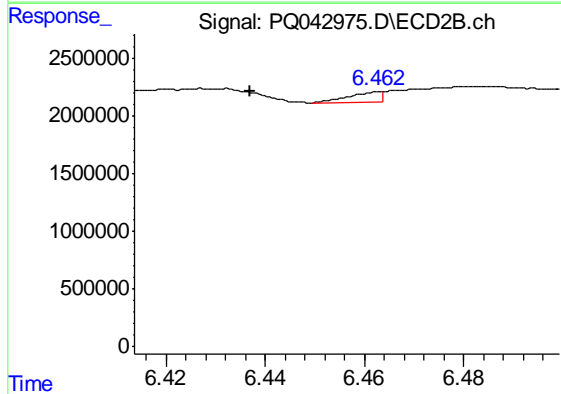
R.T.: 6.147 min  
 Delta R.T.: 0.002 min  
 Response: 67023  
 Conc: 0.85 ng/ml



#22 AR-1248-2

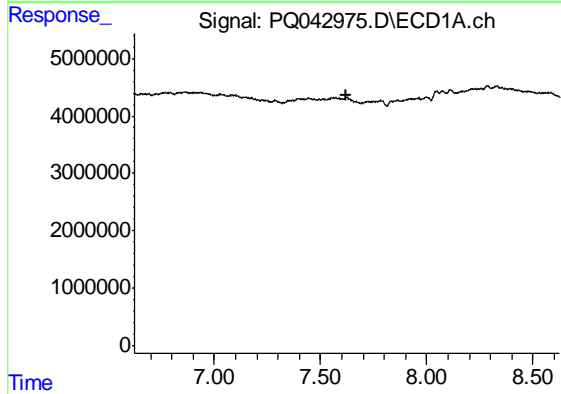
R.T.: 7.395 min  
 Delta R.T.: 0.000 min  
 Response: 942028  
 Conc: 8.32 ng/ml

Instrument :  
 ECD\_Q  
 ClientSampleId :  
 AR1268325



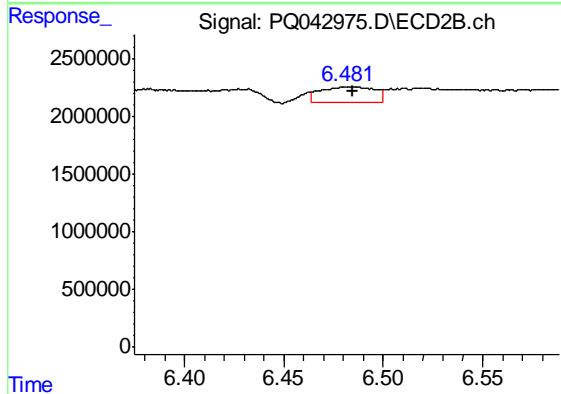
#22 AR-1248-2

R.T.: 6.463 min  
 Delta R.T.: 0.026 min  
 Response: 407443  
 Conc: 3.44 ng/ml



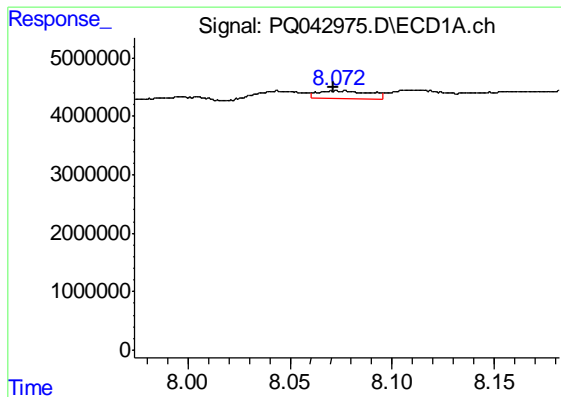
#23 AR-1248-3

R.T.: 0.000 min  
 Exp R.T. : 7.624 min  
 Response: 0  
 Conc: N.D.



#23 AR-1248-3

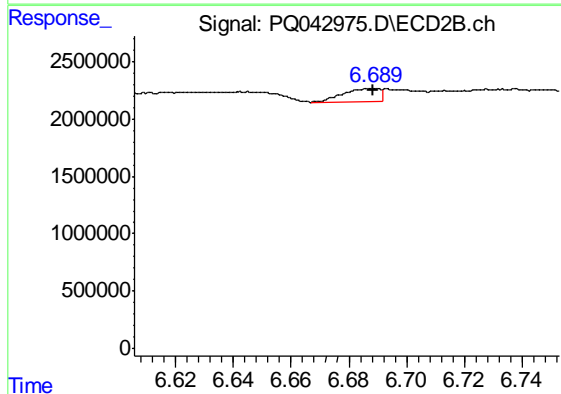
R.T.: 6.484 min  
 Delta R.T.: 0.000 min  
 Response: 2576503  
 Conc: 21.33 ng/ml



#24 AR-1248-4

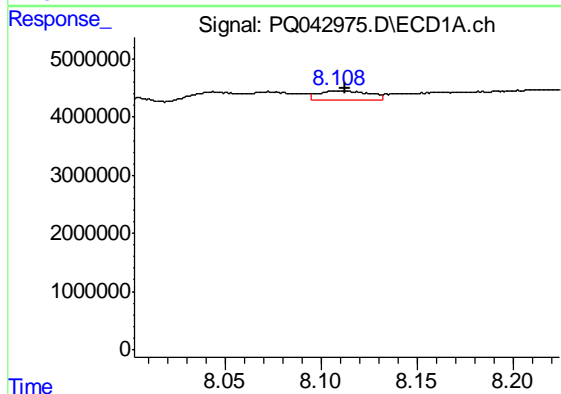
R.T.: 8.073 min  
 Delta R.T.: 0.001 min  
 Response: 2333759  
 Conc: 14.40 ng/ml

Instrument :  
 ECD\_Q  
 ClientSampleId :  
 AR1268325



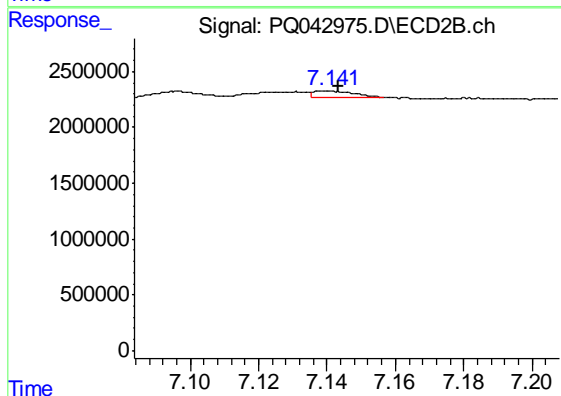
#24 AR-1248-4

R.T.: 6.689 min  
 Delta R.T.: 0.000 min  
 Response: 971482  
 Conc: 6.63 ng/ml



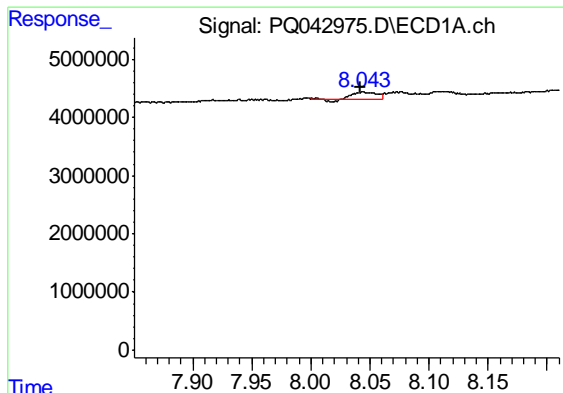
#25 AR-1248-5

R.T.: 8.109 min  
 Delta R.T.: -0.004 min  
 Response: 2833650  
 Conc: 18.08 ng/ml



#25 AR-1248-5

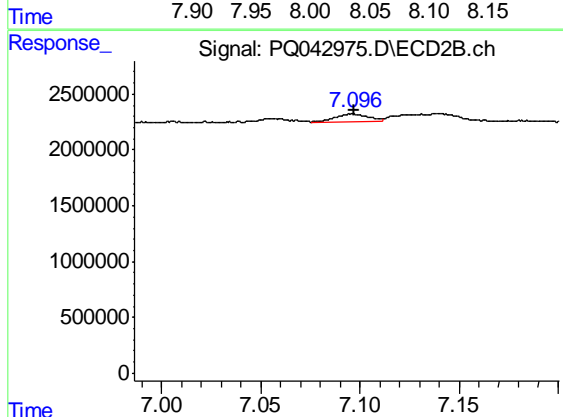
R.T.: 7.141 min  
 Delta R.T.: -0.002 min  
 Response: 513863  
 Conc: 3.30 ng/ml



#26 AR-1254-1

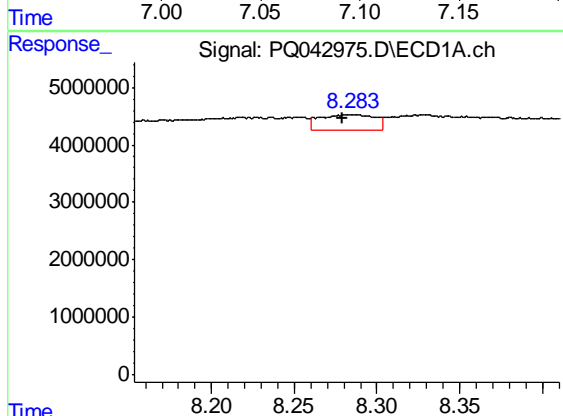
R.T.: 8.044 min  
 Delta R.T.: 0.002 min  
 Response: 1446215  
 Conc: 8.65 ng/ml

Instrument :  
 ECD\_Q  
 ClientSampleId :  
 AR1268325



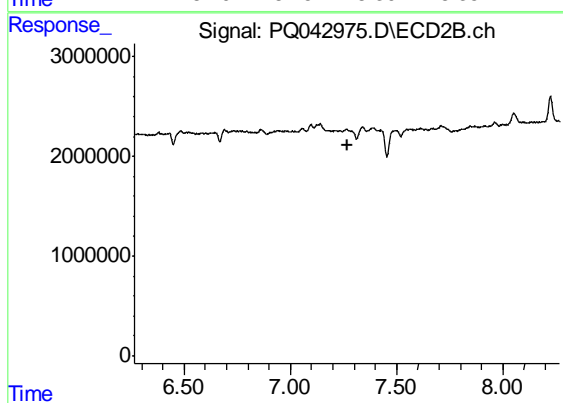
#26 AR-1254-1

R.T.: 7.097 min  
 Delta R.T.: 0.000 min  
 Response: 823805  
 Conc: 3.36 ng/ml



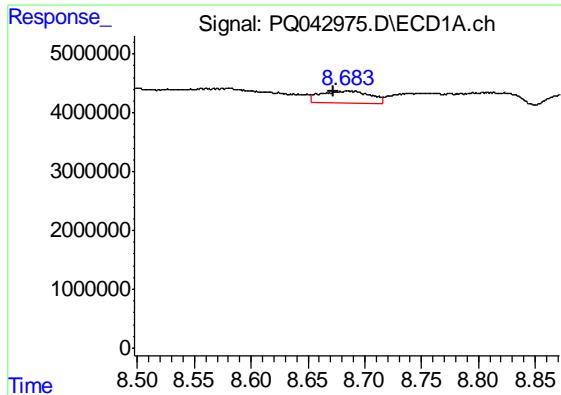
#27 AR-1254-2

R.T.: 8.285 min  
 Delta R.T.: 0.006 min  
 Response: 6073504  
 Conc: 22.58 ng/ml



#27 AR-1254-2

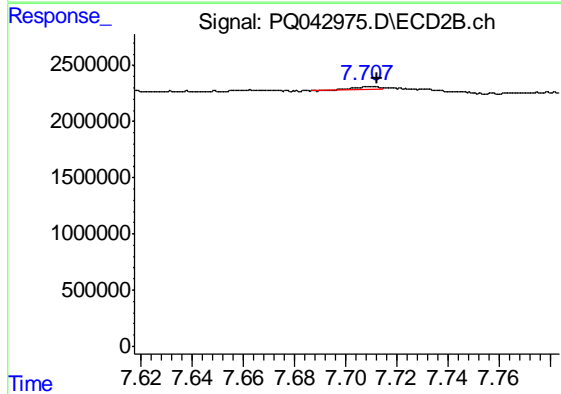
R.T.: 0.000 min  
 Exp R.T. : 7.266 min  
 Response: 0  
 Conc: N.D.



#28 AR-1254-3

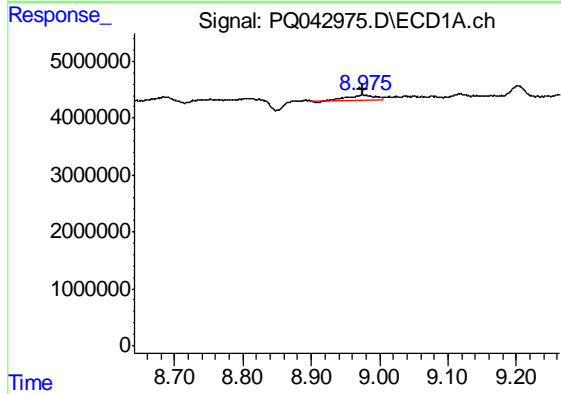
R.T.: 8.684 min  
 Delta R.T.: 0.012 min  
 Response: 6013011  
 Conc: 19.96 ng/ml

Instrument :  
 ECD\_Q  
 ClientSampleId :  
 AR1268325



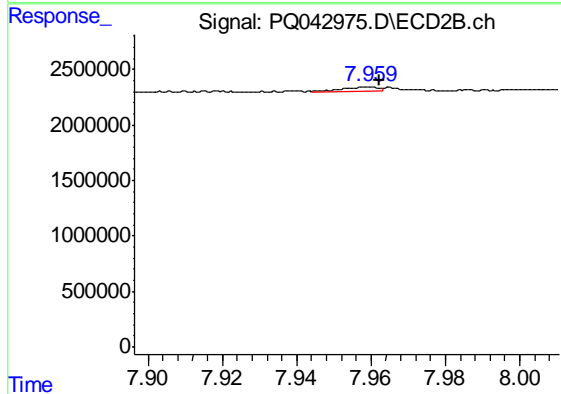
#28 AR-1254-3

R.T.: 7.708 min  
 Delta R.T.: -0.004 min  
 Response: 225513  
 Conc: 0.60 ng/ml



#29 AR-1254-4

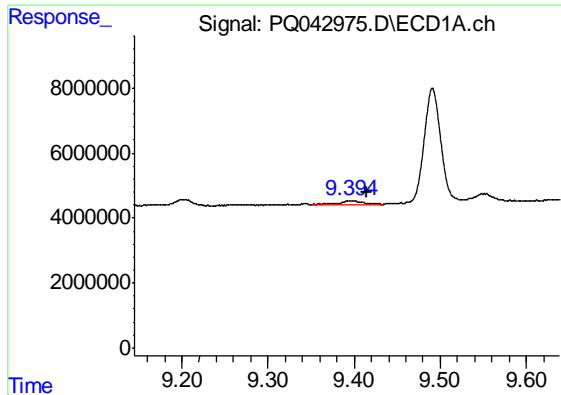
R.T.: 8.975 min  
 Delta R.T.: 0.000 min  
 Response: 2680567  
 Conc: 11.77 ng/ml



#29 AR-1254-4

R.T.: 7.960 min  
 Delta R.T.: -0.002 min  
 Response: 264947  
 Conc: 1.10 ng/ml

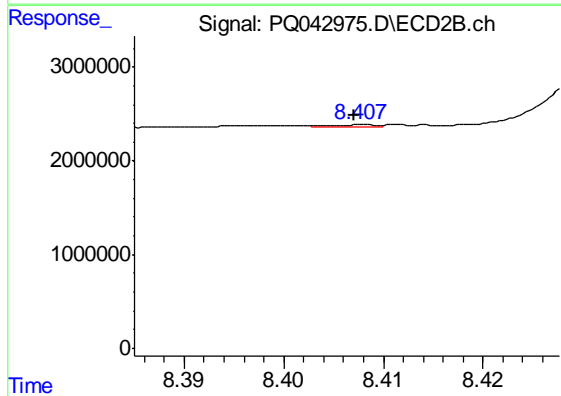




#30 AR-1254-5

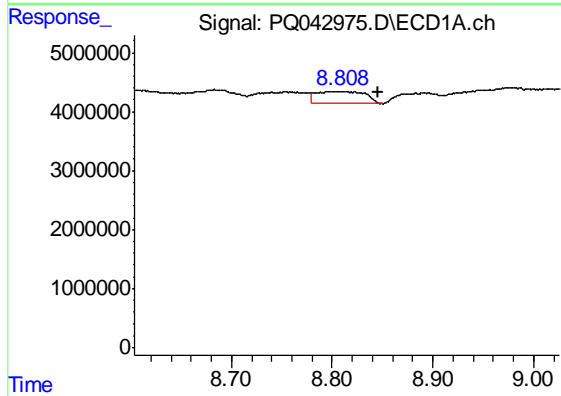
R.T.: 9.396 min  
 Delta R.T.: -0.019 min  
 Response: 2273506  
 Conc: 8.39 ng/ml

Instrument :  
 ECD\_Q  
 ClientSampleId :  
 AR1268325



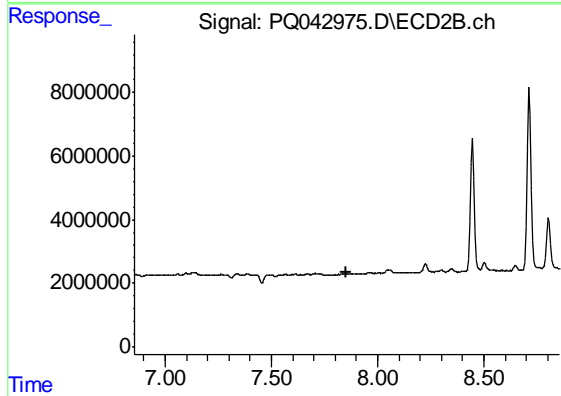
#30 AR-1254-5

R.T.: 8.408 min  
 Delta R.T.: 0.000 min  
 Response: 82110  
 Conc: 0.22 ng/ml



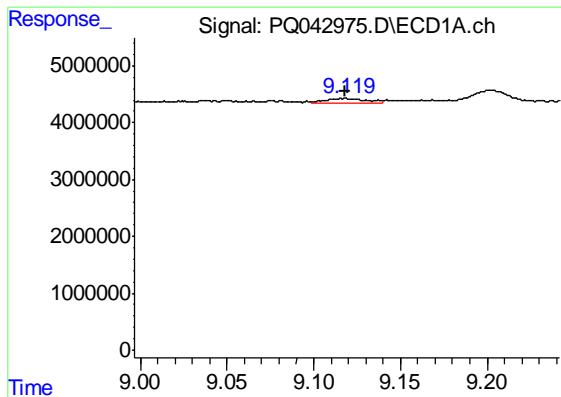
#31 AR-1260-1

R.T.: 8.813 min  
 Delta R.T.: -0.032 min  
 Response: 6733604  
 Conc: 37.58 ng/ml



#31 AR-1260-1

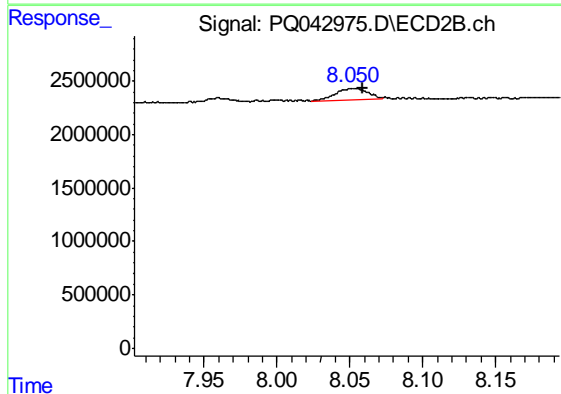
R.T.: 0.000 min  
 Exp R.T. : 7.855 min  
 Response: 0  
 Conc: N.D.



#32 AR-1260-2

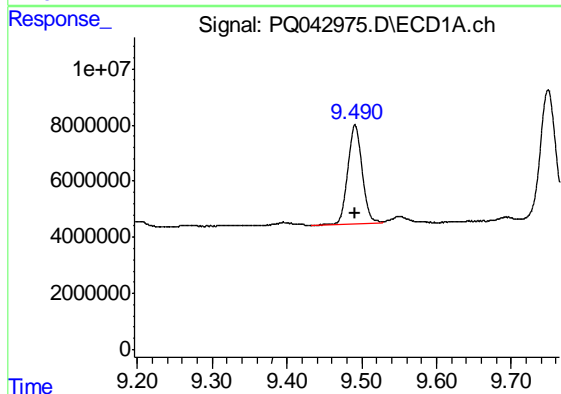
R.T.: 9.118 min  
 Delta R.T.: 0.000 min  
 Response: 1285904  
 Conc: 5.47 ng/ml

Instrument :  
 ECD\_Q  
 ClientSampleId :  
 AR1268325



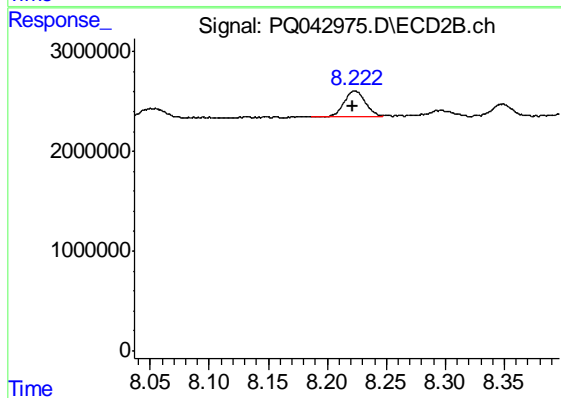
#32 AR-1260-2

R.T.: 8.050 min  
 Delta R.T.: -0.009 min  
 Response: 1663679  
 Conc: 6.53 ng/ml



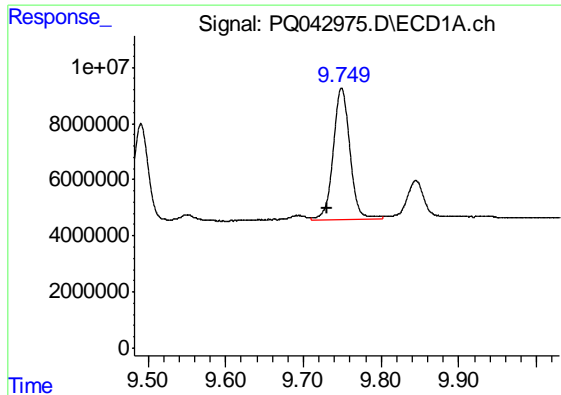
#33 AR-1260-3

R.T.: 9.491 min  
 Delta R.T.: 0.000 min  
 Response: 47420812  
 Conc: 221.92 ng/ml



#33 AR-1260-3

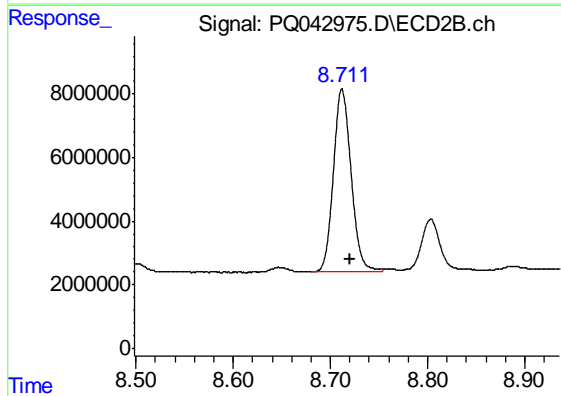
R.T.: 8.223 min  
 Delta R.T.: 0.000 min  
 Response: 3239181  
 Conc: 14.22 ng/ml



#34 AR-1260-4

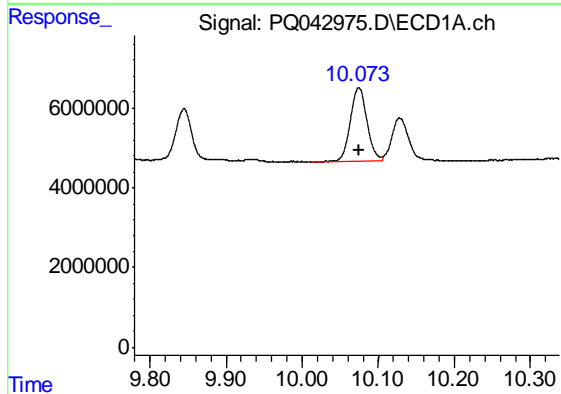
R.T.: 9.749 min  
 Delta R.T.: 0.018 min  
 Response: 70267618  
 Conc: 298.02 ng/ml

Instrument :  
 ECD\_Q  
 ClientSampleId :  
 AR1268325



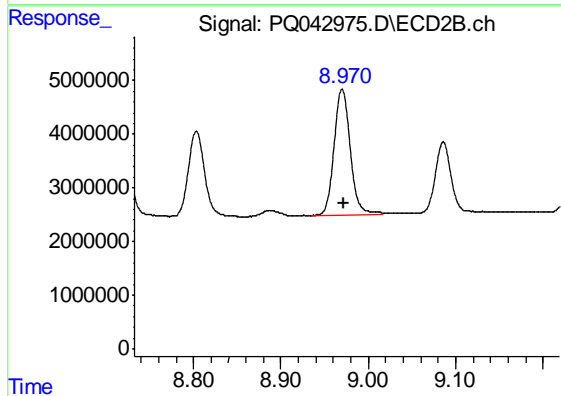
#34 AR-1260-4

R.T.: 8.712 min  
 Delta R.T.: -0.008 min  
 Response: 72551835  
 Conc: 336.27 ng/ml



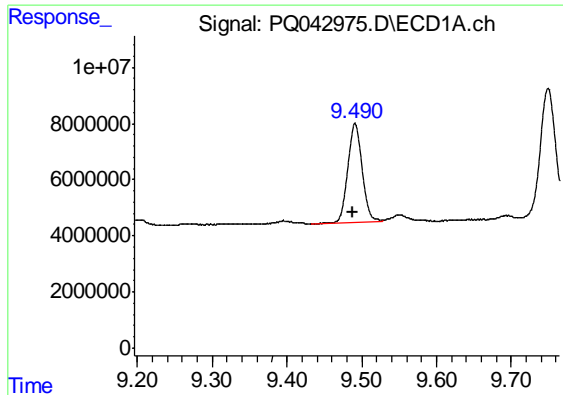
#35 AR-1260-5

R.T.: 10.074 min  
 Delta R.T.: -0.001 min  
 Response: 27993932  
 Conc: 49.12 ng/ml



#35 AR-1260-5

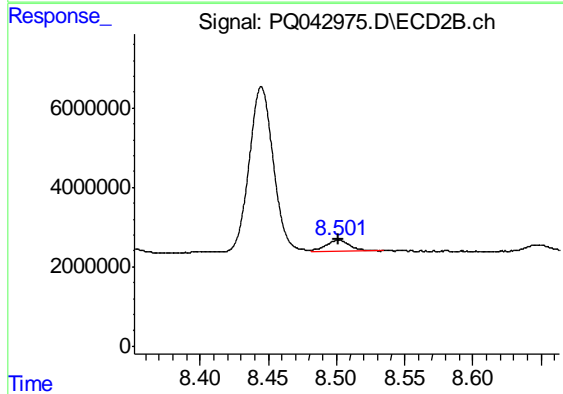
R.T.: 8.970 min  
 Delta R.T.: -0.002 min  
 Response: 30131725  
 Conc: 51.67 ng/ml



#36 AR-1262-1

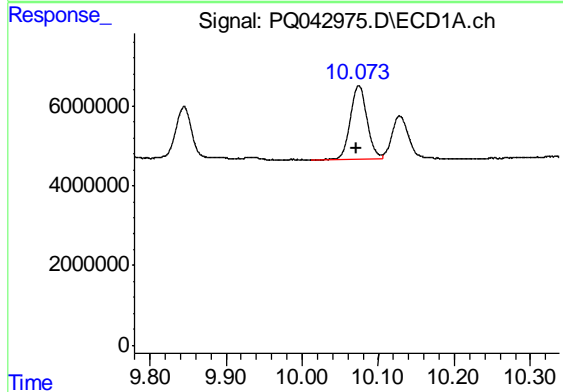
R.T.: 9.491 min  
 Delta R.T.: 0.003 min  
 Response: 47420812  
 Conc: 118.03 ng/ml

Instrument :  
 ECD\_Q  
 ClientSampled :  
 AR1268325



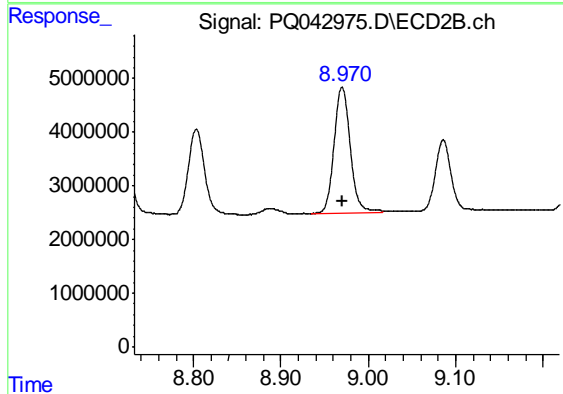
#36 AR-1262-1

R.T.: 8.502 min  
 Delta R.T.: 0.000 min  
 Response: 3468345  
 Conc: 18.72 ng/ml



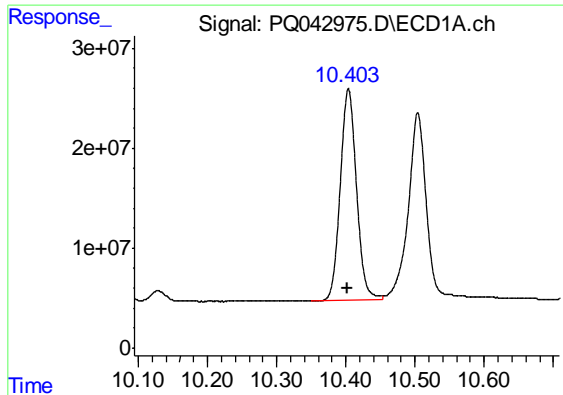
#37 AR-1262-2

R.T.: 10.074 min  
 Delta R.T.: 0.003 min  
 Response: 27993932  
 Conc: 35.00 ng/ml



#37 AR-1262-2

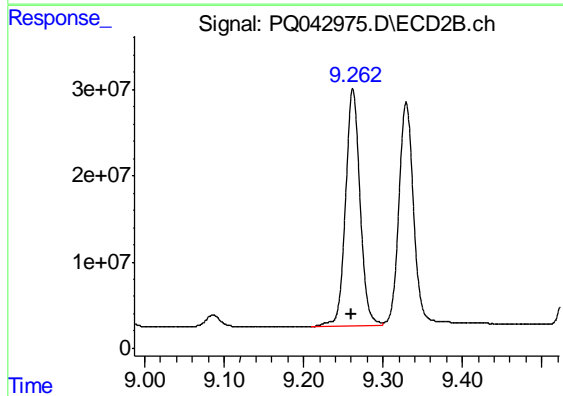
R.T.: 8.970 min  
 Delta R.T.: 0.000 min  
 Response: 30131725  
 Conc: 34.88 ng/ml



#38 AR-1262-3

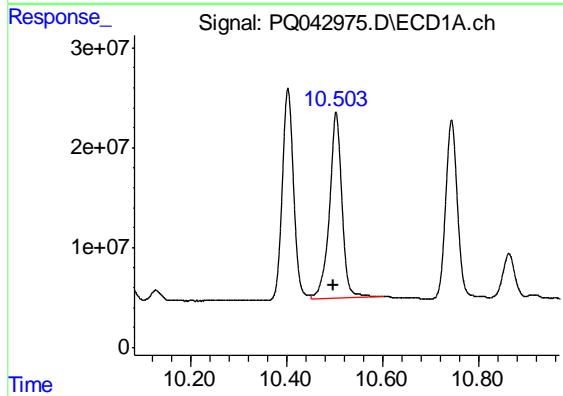
R.T.: 10.404 min  
Delta R.T.: 0.001 min  
Response: 343472187  
Conc: 580.00 ng/ml

Instrument :  
ECD\_Q  
ClientSampleId :  
AR1268325



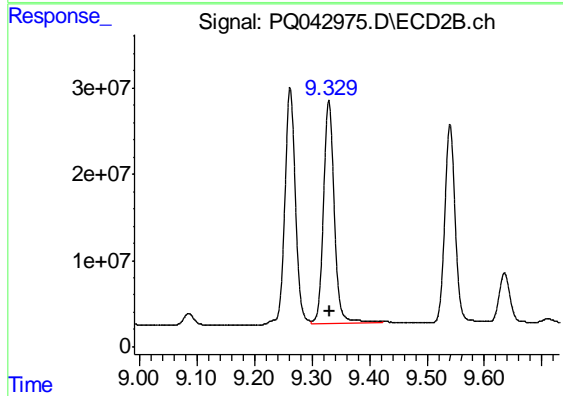
#38 AR-1262-3

R.T.: 9.262 min  
Delta R.T.: 0.001 min  
Response: 348232998  
Conc: 929.50 ng/ml



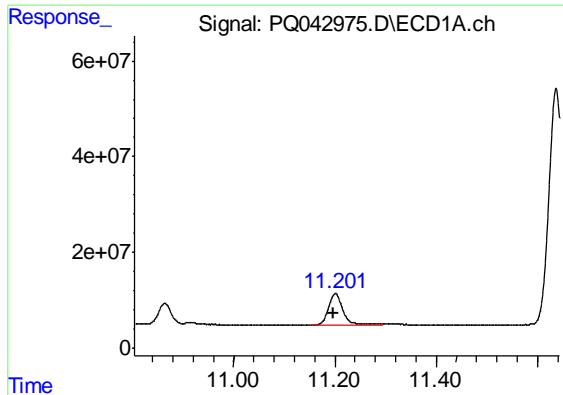
#39 AR-1262-4

R.T.: 10.504 min  
Delta R.T.: 0.004 min  
Response: 334961055  
Conc: 672.57 ng/ml



#39 AR-1262-4

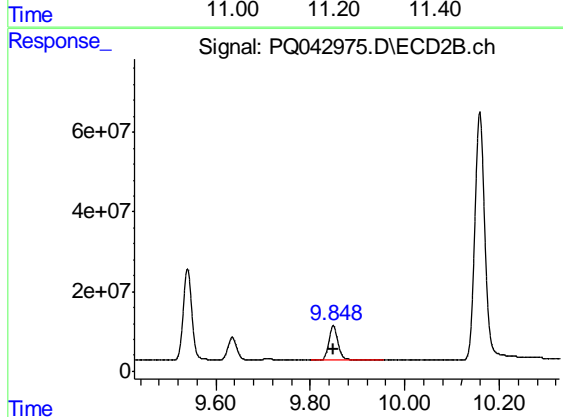
R.T.: 9.329 min  
Delta R.T.: 0.000 min  
Response: 335505838  
Conc: 488.69 ng/ml



#40 AR-1262-5

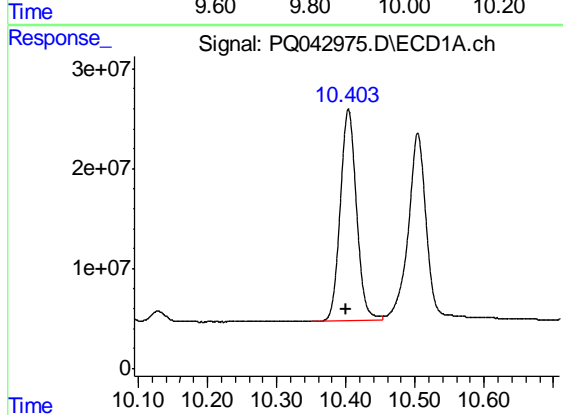
R.T.: 11.201 min  
Delta R.T.: 0.003 min  
Response: 128169206  
Conc: 343.51 ng/ml

Instrument :  
ECD\_Q  
ClientSampled :  
AR1268325



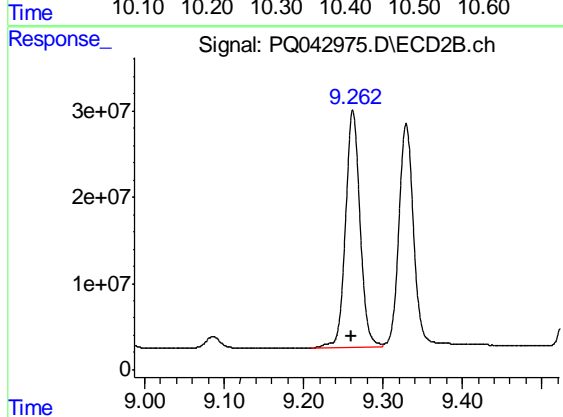
#40 AR-1262-5

R.T.: 9.849 min  
Delta R.T.: 0.000 min  
Response: 118196515  
Conc: 359.67 ng/ml



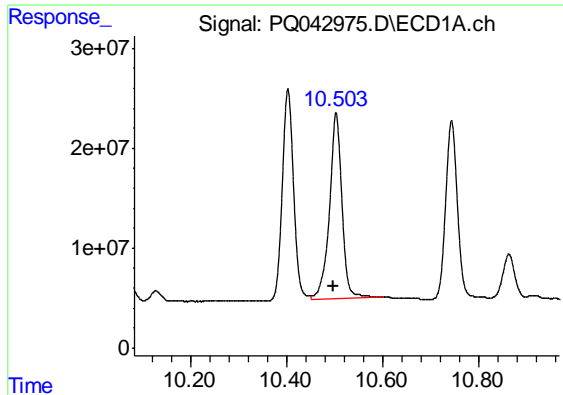
#41 AR-1268-1

R.T.: 10.404 min  
Delta R.T.: 0.004 min  
Response: 343472187  
Conc: 319.62 ng/ml



#41 AR-1268-1

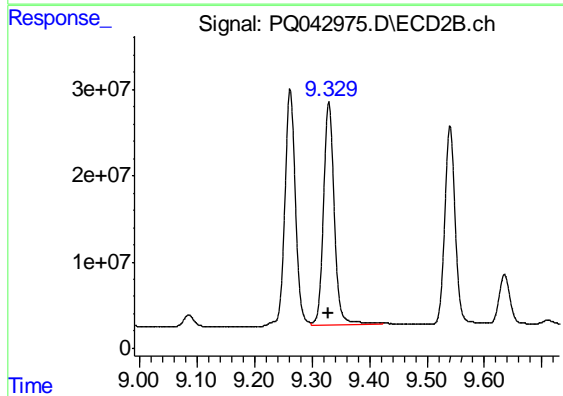
R.T.: 9.262 min  
Delta R.T.: 0.001 min  
Response: 348232998  
Conc: 325.36 ng/ml



#42 AR-1268-2

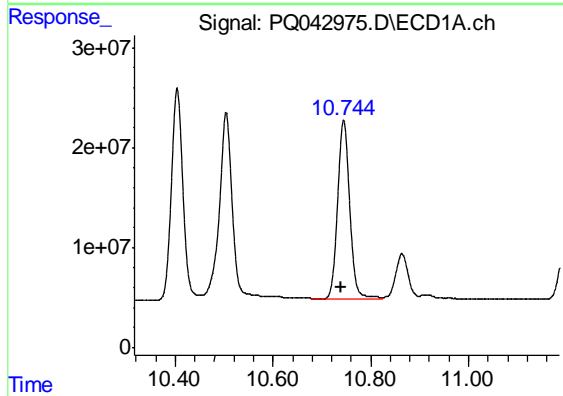
R.T.: 10.504 min  
 Delta R.T.: 0.005 min  
 Response: 334961055  
 Conc: 319.22 ng/ml

Instrument :  
 ECD\_Q  
 ClientSampleId :  
 AR1268325



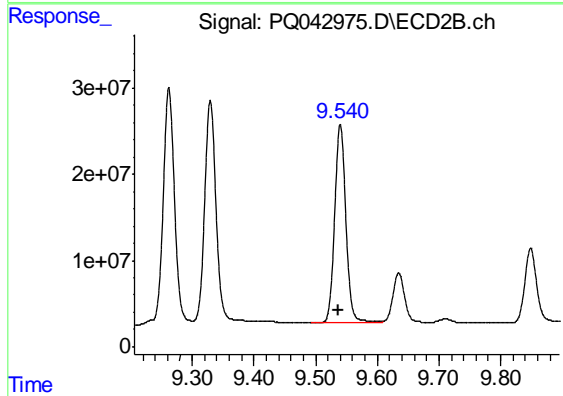
#42 AR-1268-2

R.T.: 9.329 min  
 Delta R.T.: 0.001 min  
 Response: 335505838  
 Conc: 326.53 ng/ml



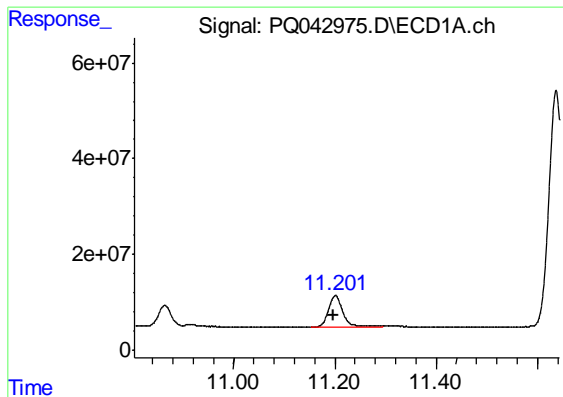
#43 AR-1268-3

R.T.: 10.745 min  
 Delta R.T.: 0.005 min  
 Response: 304744594  
 Conc: 318.31 ng/ml



#43 AR-1268-3

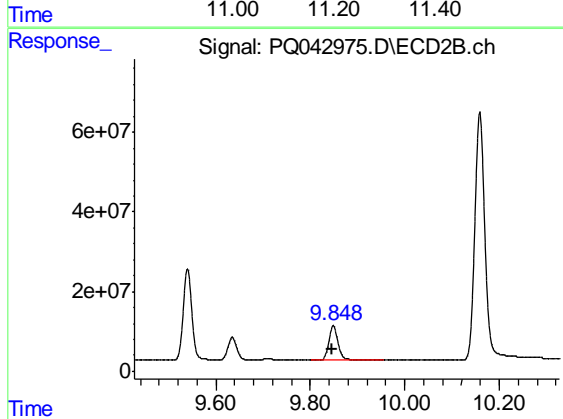
R.T.: 9.540 min  
 Delta R.T.: 0.002 min  
 Response: 289052144  
 Conc: 327.68 ng/ml



#44 AR-1268-4

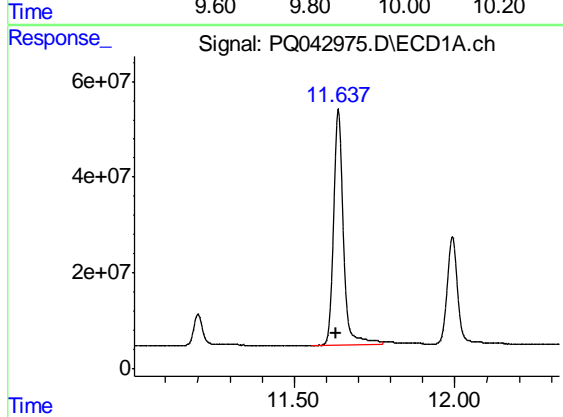
R.T.: 11.201 min  
Delta R.T.: 0.004 min  
Response: 128169206  
Conc: 319.52 ng/ml

Instrument :  
ECD\_Q  
ClientSampled :  
AR1268325



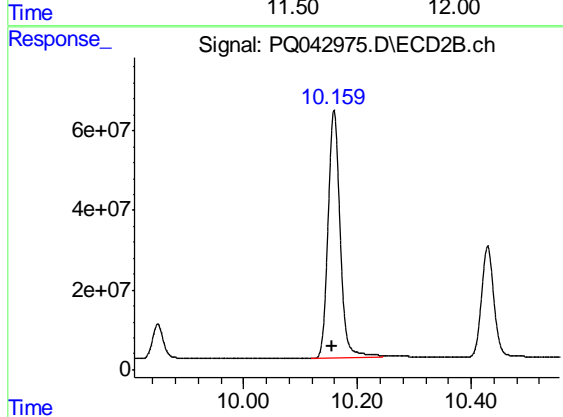
#44 AR-1268-4

R.T.: 9.849 min  
Delta R.T.: 0.003 min  
Response: 118196515  
Conc: 331.71 ng/ml



#45 AR-1268-5

R.T.: 11.637 min  
Delta R.T.: 0.005 min  
Response: 1042164694  
Conc: 312.18 ng/ml



#45 AR-1268-5

R.T.: 10.159 min  
Delta R.T.: 0.002 min  
Response: 915606772  
Conc: 327.46 ng/ml