

Data Path : Z:\pestpcbsrv\HPCHEM1\ECD_Q\Data\PQ082719\
 Data File : PQ043014.D
 Signal(s) : Signal #1: ECD1A.ch Signal #2: ECD2B.ch
 Acq On : 27 Aug 2019 06:14
 Operator : SM\AJ
 Sample : K4480-07
 Misc :
 ALS Vial : 40 Sample Multiplier: 1

Instrument :
 ECD_Q
 ClientSampleId :
 BF3Q1

Integration File signal 1: autoint1.e
 Integration File signal 2: autoint2.e
 Quant Time: Aug 27 07:00:01 2019
 Quant Method : Z:\pestpcbsrv\HPCHEM1\ECD_Q\Method\PQ082619CLP.M
 Quant Title : GC EXTRACTABLES
 QLast Update : Mon Aug 26 05:38:16 2019
 Response via : Initial Calibration
 Integrator: ChemStation

Volume Inj. : 1 µl
 Signal #1 Phase : ZB MR1 Signal #2 Phase: ZB MR2
 Signal #1 Info : 30Mx0.32mmx 0.5µm Signal #2 Info : 30M x 0.32mm x 0.25µm

Compound	RT#1	RT#2	Resp#1	Resp#2	ng/ml	ng/ml

System Monitoring Compounds						
1) SA Tetrachlo...	5.632	4.694	62997919	57906161	23.536	25.017
2) SA Decachlor...	11.981	10.422	247.5E6	200.2E6	29.315	29.804
Target Compounds						
3) L1 AR-1016-1	7.040	0.000	2550112	0	24.546	N.D. #
4) L1 AR-1016-2	7.040	0.000	2550112	0	15.996	N.D. #
5) L1 AR-1016-3	7.229	0.000	14417153	0	141.915	N.D. #
6) L1 AR-1016-4	7.229	6.469	14417153	200873	179.950	2.891 #
7) L1 AR-1016-5	0.000	6.692	0	308316	N.D.	3.422 #
8) L2 AR-1221-1	5.926	0.000	2625542	0	77.498	N.D. #
9) L2 AR-1221-2	6.023	5.111	7270770	822587	307.588	32.727 #
13) L3 AR-1232-3	7.040	0.000	2550112	0	30.748	N.D. #
14) L3 AR-1232-4	7.229	6.484	14417153	142873	334.901	3.333 #
15) L3 AR-1232-5	0.000	6.692	0	308316	N.D.	6.815 #
16) L4 AR-1242-1	7.040	0.000	2550112	0	25.064	N.D. #
17) L4 AR-1242-2	7.040	0.000	2550112	0	16.741	N.D. #
18) L4 AR-1242-3	7.229	0.000	14417153	0	151.080	N.D. #
19) L4 AR-1242-4	7.229	6.484	14417153	142873	187.288	1.713 #
20) L4 AR-1242-5	8.043	7.121	219720	245822	2.294	2.158
21) L5 AR-1248-1	7.040	0.000	2550112	0	32.261	N.D. #
22) L5 AR-1248-2	0.000	6.469	0	200873	N.D.	1.697 #
23) L5 AR-1248-3	0.000	6.484	0	142873	N.D.	1.183 #
24) L5 AR-1248-4	8.043	6.692	219720	308316	1.356	2.105 #
25) L5 AR-1248-5	8.043	7.121	219720	245822	1.402	1.578
26) L6 AR-1254-1	8.043	7.121	219720	245822	1.315	1.002
27) L6 AR-1254-2	8.256	7.336	854009	597889	3.175	2.681
28) L6 AR-1254-3	8.681	0.000	11347185	0	37.676	N.D. #
29) L6 AR-1254-4	8.988	0.000	1400340	0	6.147	N.D. #
30) L6 AR-1254-5	9.454	0.000	948132	0	3.501	N.D. #
31) L7 AR-1260-1	8.880	7.832	871916	202061	4.867	1.042 #
32) L7 AR-1260-2	9.087	8.043	1904330	269477	8.097	1.058 #
33) L7 AR-1260-3	9.454	8.275	948132	401691	4.437	1.763 #
34) L7 AR-1260-4	9.713	8.684	1528267	103218	6.482	0.478 #
35) L7 AR-1260-5	10.059	0.000	500099	0	0.878	N.D. #
36) L8 AR-1262-1	9.454	8.506	948132	193542	2.360	1.045 #
37) L8 AR-1262-2	10.059	0.000	500099	0	0.625	N.D. #
38) L8 AR-1262-3	0.000	9.258	0	358695	N.D.	0.957 #
39) L8 AR-1262-4	0.000	9.302	0	54884	N.D.	0.080 #
40) L8 AR-1262-5	11.237	9.851	3236019	314453	8.673	0.957 #
41) L9 AR-1268-1	0.000	9.258	0	358695	N.D.	0.335 #
42) L9 AR-1268-2	0.000	9.302	0	54884	N.D.	0.053 #
43) L9 AR-1268-3	10.736	9.536	3137888	1685093	3.278	1.910 #
44) L9 AR-1268-4	11.237	9.851	3236019	314453	8.067	0.882 #
45) L9 AR-1268-5	11.625	10.155	1216739	1272674	0.364	0.455

Data Path : Z:\pestpcbsrv\HPCHEM1\ECD_Q\Data\PQ082719\
Data File : PQ043014.D
Signal(s) : Signal #1: ECD1A.ch Signal #2: ECD2B.ch
Acq On : 27 Aug 2019 06:14
Operator : SM\AJ
Sample : K4480-07
Misc :
ALS Vial : 40 Sample Multiplier: 1

Instrument :
ECD_Q
ClientSampleId :
BF3Q1

Integration File signal 1: autoint1.e
Integration File signal 2: autoint2.e
Quant Time: Aug 27 07:00:01 2019
Quant Method : Z:\pestpcbsrv\HPCHEM1\ECD_Q\Method\PQ082619CLP.M
Quant Title : GC EXTRACTABLES
QLast Update : Mon Aug 26 05:38:16 2019
Response via : Initial Calibration
Integrator: ChemStation

Volume Inj. : 1 µl
Signal #1 Phase : ZB MR1 Signal #2 Phase: ZB MR2
Signal #1 Info : 30Mx0.32mmx 0.5µm Signal #2 Info : 30M x 0.32mm x 0.25µm

Compound	RT#1	RT#2	Resp#1	Resp#2	ng/ml	ng/ml
----------	------	------	--------	--------	-------	-------

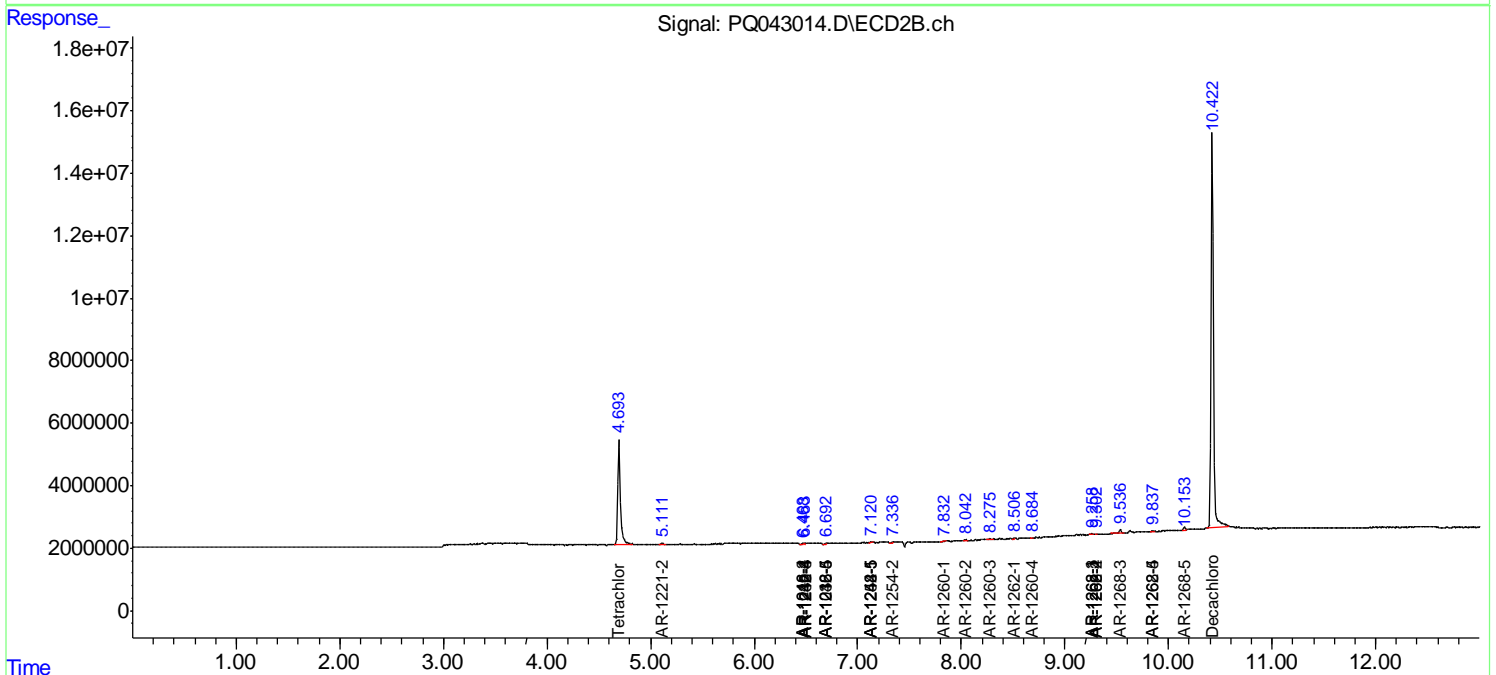
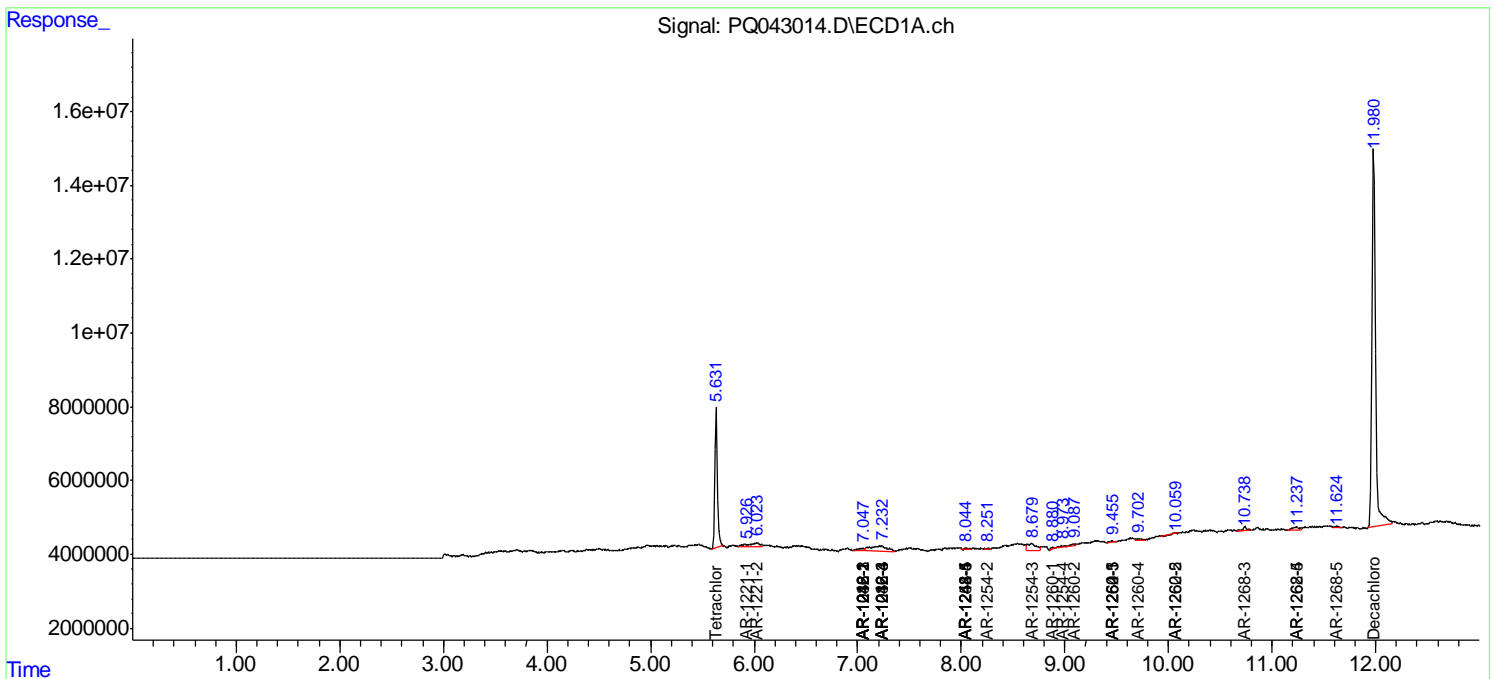
(f)=RT Delta > 1/2 Window (#)=Amounts differ by > 25% (m)=manual int.

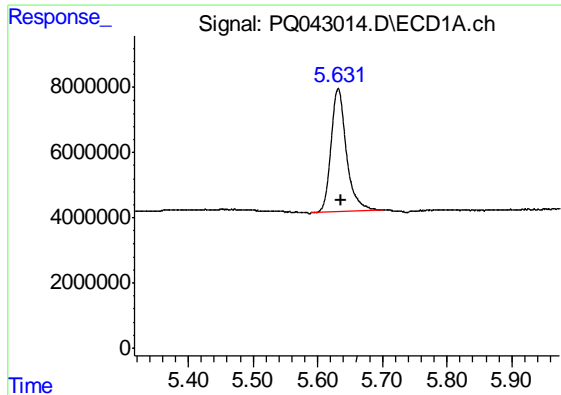
Data Path : Z:\pestpcbsrv\HPCHEM1\ECD_Q\Data\PQ082719\
 Data File : PQ043014.D
 Signal(s) : Signal #1: ECD1A.ch Signal #2: ECD2B.ch
 Acq On : 27 Aug 2019 06:14
 Operator : SM\AJ
 Sample : K4480-07
 Misc :
 ALS Vial : 40 Sample Multiplier: 1

Instrument :
 ECD_Q
 ClientSampled :
 BF3Q1

Integration File signal 1: autoint1.e
 Integration File signal 2: autoint2.e
 Quant Time: Aug 27 07:00:01 2019
 Quant Method : Z:\pestpcbsrv\HPCHEM1\ECD_Q\Method\PQ082619CLP.M
 Quant Title : GC EXTRACTABLES
 QLast Update : Mon Aug 26 05:38:16 2019
 Response via : Initial Calibration
 Integrator: ChemStation

Volume Inj. : 1 µl
 Signal #1 Phase : ZB MR1 Signal #2 Phase: ZB MR2
 Signal #1 Info : 30Mx0.32mmx 0.5µm Signal #2 Info : 30M x 0.32mm x 0.25µm

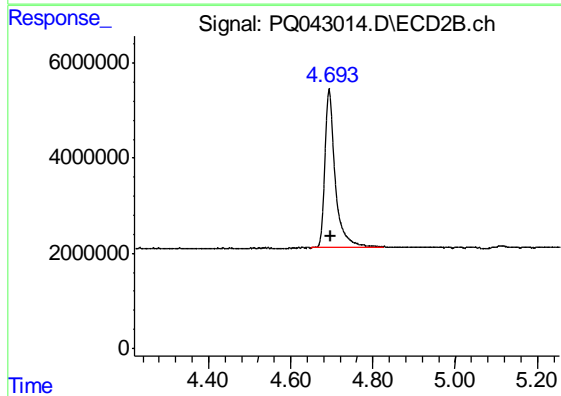




#1 Tetrachloro-m-xylene

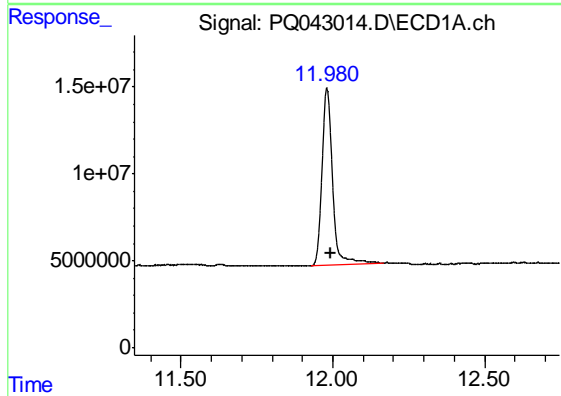
R.T.: 5.632 min
 Delta R.T.: -0.004 min
 Response: 62997919
 Conc: 23.54 ng/ml

Instrument :
 ECD_Q
 ClientSampleId :
 BF3Q1



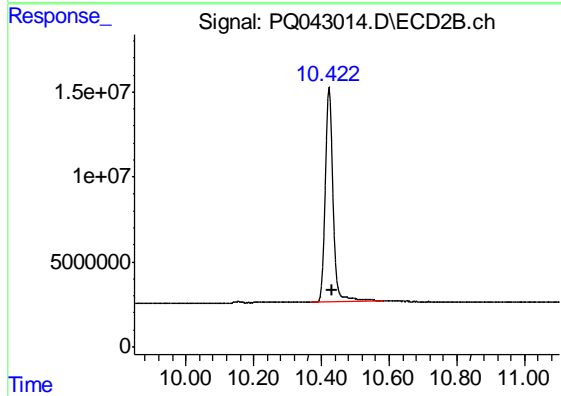
#1 Tetrachloro-m-xylene

R.T.: 4.694 min
 Delta R.T.: -0.003 min
 Response: 57906161
 Conc: 25.02 ng/ml



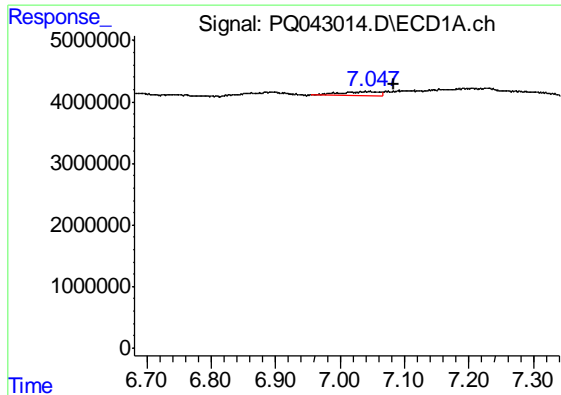
#2 Decachlorobiphenyl

R.T.: 11.981 min
 Delta R.T.: -0.013 min
 Response: 247480042
 Conc: 29.31 ng/ml



#2 Decachlorobiphenyl

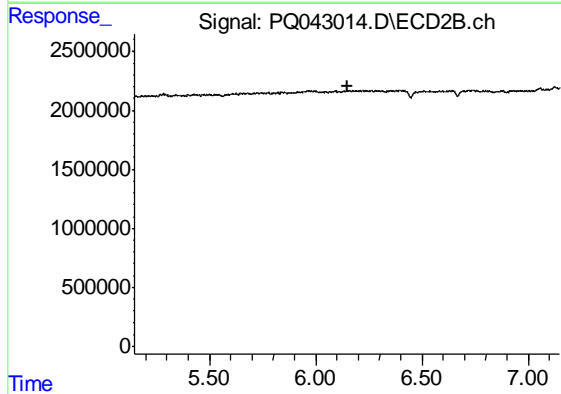
R.T.: 10.422 min
 Delta R.T.: -0.008 min
 Response: 200216254
 Conc: 29.80 ng/ml



#3 AR-1016-1

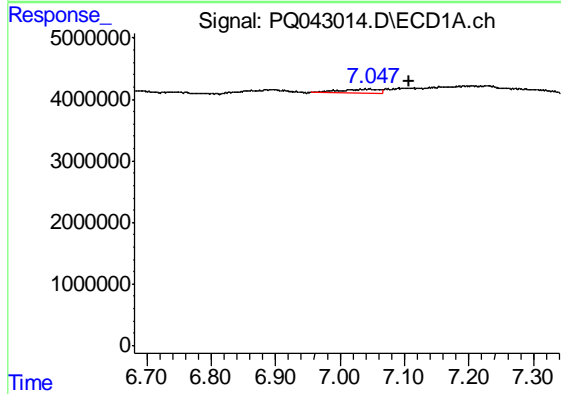
R.T.: 7.040 min
 Delta R.T.: -0.043 min
 Response: 2550112
 Conc: 24.55 ng/ml

Instrument :
 ECD_Q
 ClientSampleId :
 BF3Q1



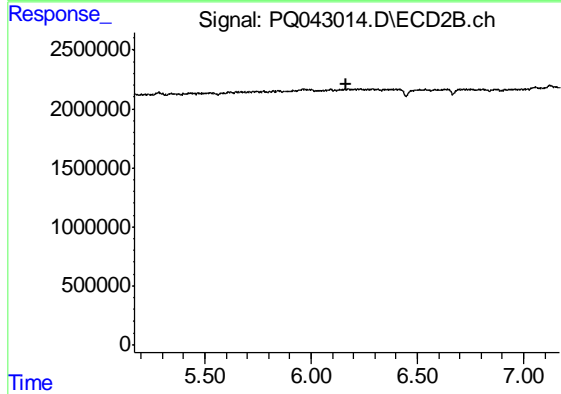
#3 AR-1016-1

R.T.: 0.000 min
 Exp R.T. : 6.147 min
 Response: 0
 Conc: N.D.



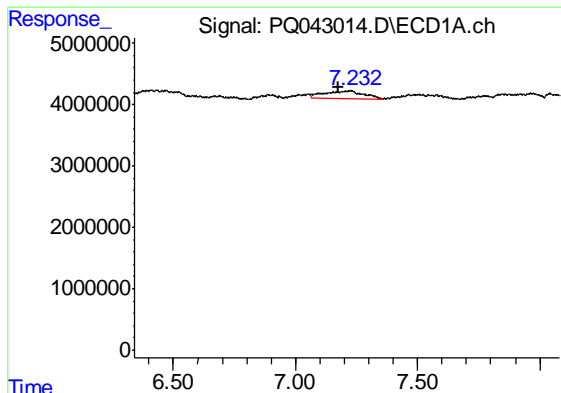
#4 AR-1016-2

R.T.: 7.040 min
 Delta R.T.: -0.067 min
 Response: 2550112
 Conc: 16.00 ng/ml



#4 AR-1016-2

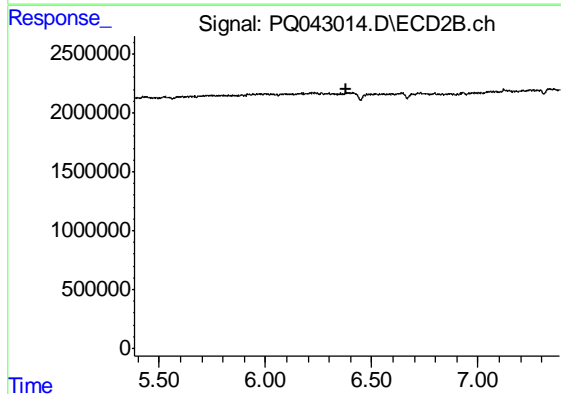
R.T.: 0.000 min
 Exp R.T. : 6.168 min
 Response: 0
 Conc: N.D.



#5 AR-1016-3

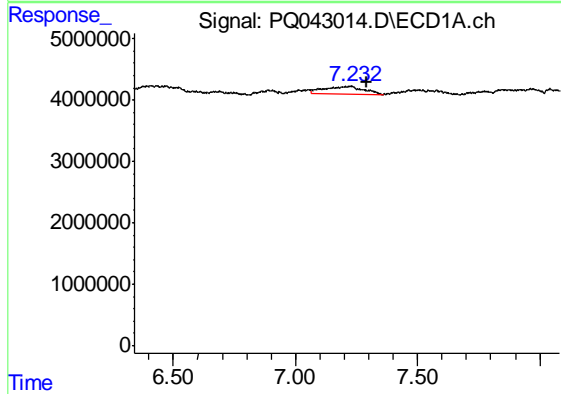
R.T.: 7.229 min
 Delta R.T.: 0.051 min
 Response: 14417153
 Conc: 141.91 ng/ml

Instrument :
 ECD_Q
 ClientSampleId :
 BF3Q1



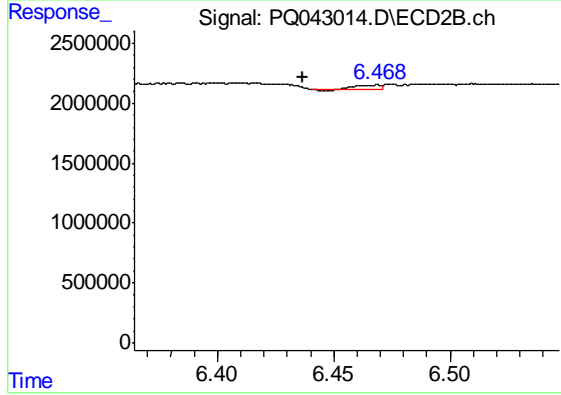
#5 AR-1016-3

R.T.: 0.000 min
 Exp R.T. : 6.383 min
 Response: 0
 Conc: N.D.



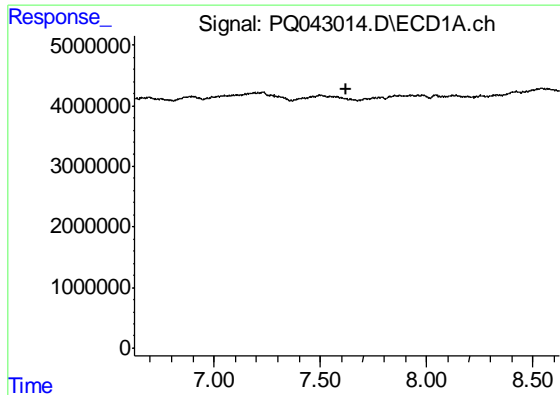
#6 AR-1016-4

R.T.: 7.229 min
 Delta R.T.: -0.062 min
 Response: 14417153
 Conc: 179.95 ng/ml



#6 AR-1016-4

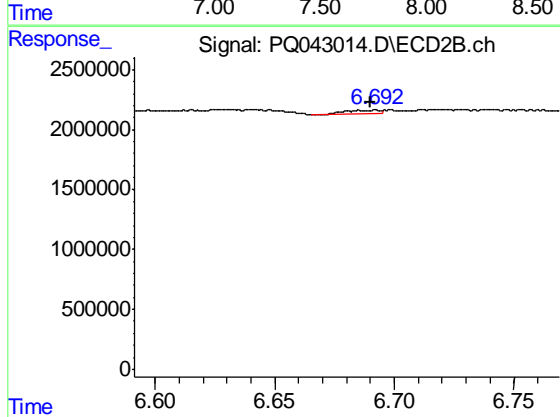
R.T.: 6.469 min
 Delta R.T.: 0.032 min
 Response: 200873
 Conc: 2.89 ng/ml



#7 AR-1016-5

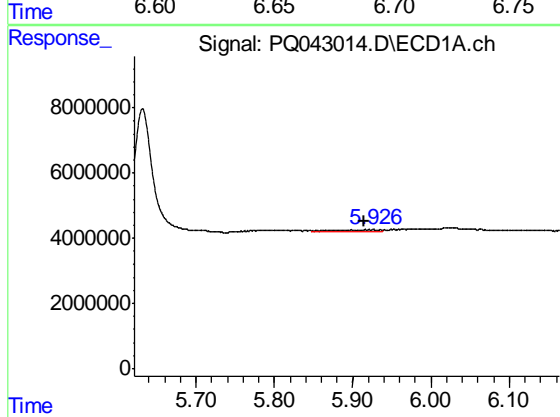
R.T.: 0.000 min
 Exp R.T. : 7.625 min
 Response: 0
 Conc: N.D.

Instrument :
 ECD_Q
 ClientSampled :
 BF3Q1



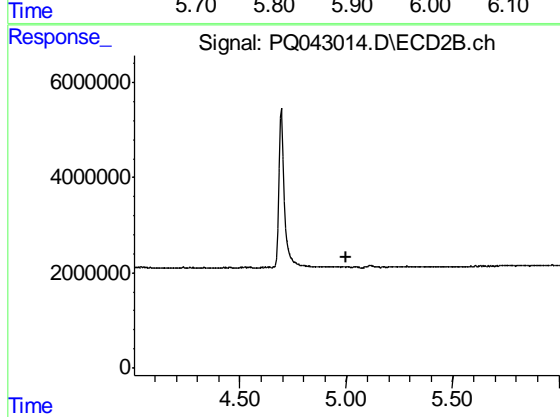
#7 AR-1016-5

R.T.: 6.692 min
 Delta R.T.: 0.002 min
 Response: 308316
 Conc: 3.42 ng/ml



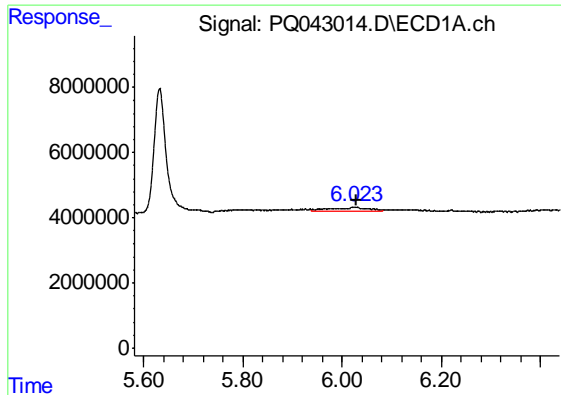
#8 AR-1221-1

R.T.: 5.926 min
 Delta R.T.: 0.011 min
 Response: 2625542
 Conc: 77.50 ng/ml



#8 AR-1221-1

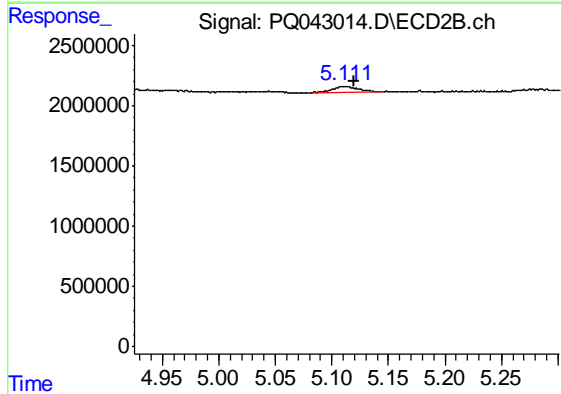
R.T.: 0.000 min
 Exp R.T. : 5.003 min
 Response: 0
 Conc: N.D.



#9 AR-1221-2

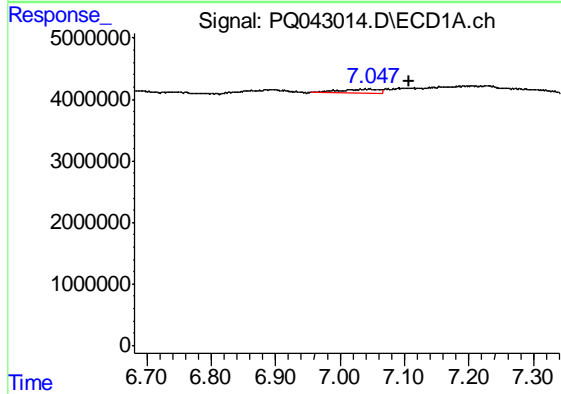
R.T.: 6.023 min
 Delta R.T.: -0.006 min
 Response: 7270770
 Conc: 307.59 ng/ml

Instrument :
 ECD_Q
 ClientSampleId :
 BF3Q1



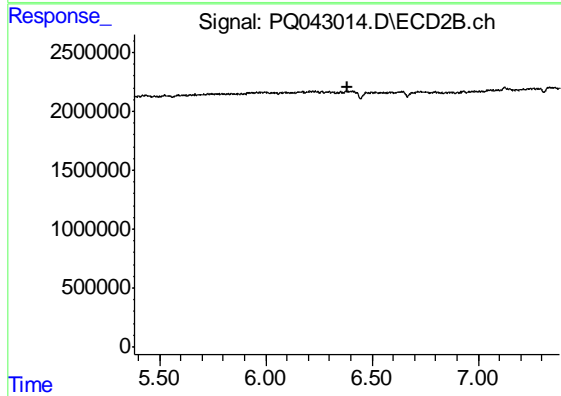
#9 AR-1221-2

R.T.: 5.111 min
 Delta R.T.: -0.009 min
 Response: 822587
 Conc: 32.73 ng/ml



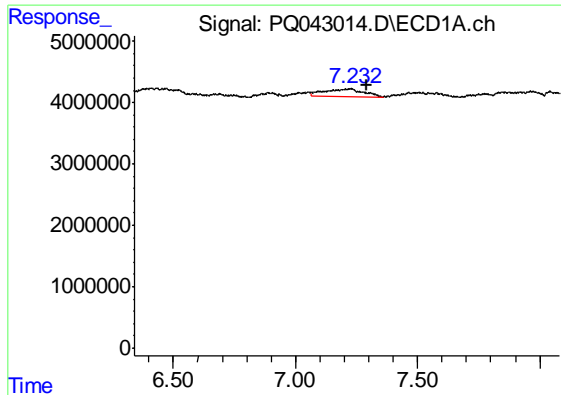
#13 AR-1232-3

R.T.: 7.040 min
 Delta R.T.: -0.067 min
 Response: 2550112
 Conc: 30.75 ng/ml



#13 AR-1232-3

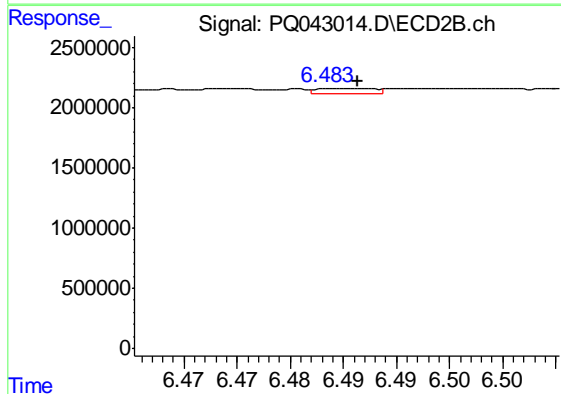
R.T.: 0.000 min
 Exp R.T. : 6.382 min
 Response: 0
 Conc: N.D.



#14 AR-1232-4

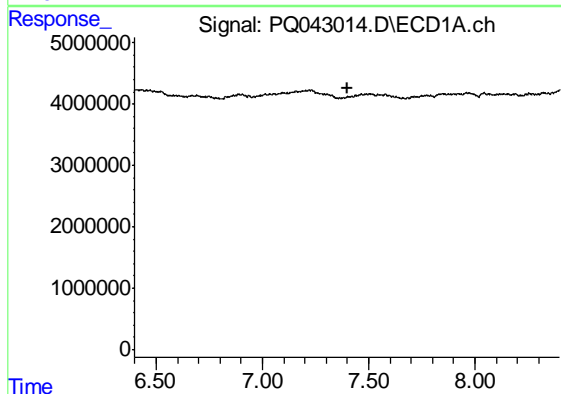
R.T.: 7.229 min
 Delta R.T.: -0.063 min
 Response: 14417153
 Conc: 334.90 ng/ml

Instrument :
 ECD_Q
 ClientSampled :
 BF3Q1



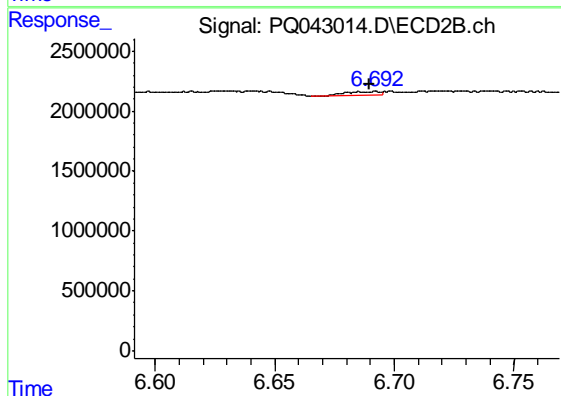
#14 AR-1232-4

R.T.: 6.484 min
 Delta R.T.: -0.002 min
 Response: 142873
 Conc: 3.33 ng/ml



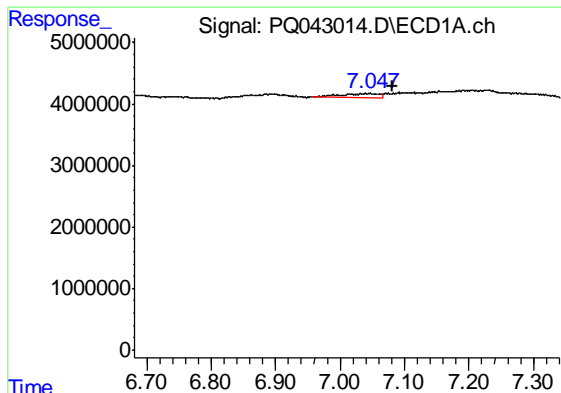
#15 AR-1232-5

R.T.: 0.000 min
 Exp R.T. : 7.398 min
 Response: 0
 Conc: N.D.



#15 AR-1232-5

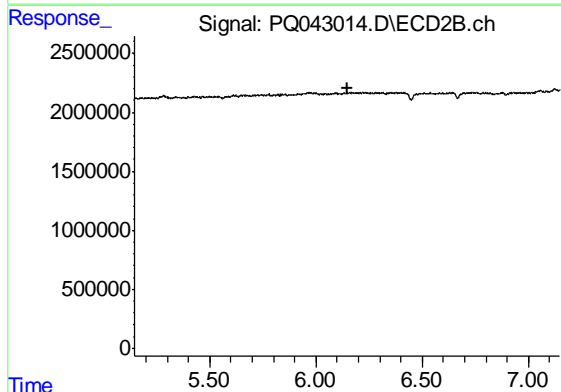
R.T.: 6.692 min
 Delta R.T.: 0.003 min
 Response: 308316
 Conc: 6.82 ng/ml



#16 AR-1242-1

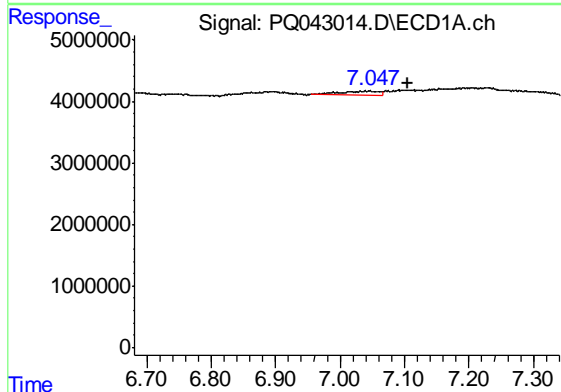
R.T.: 7.040 min
 Delta R.T.: -0.041 min
 Response: 2550112
 Conc: 25.06 ng/ml

Instrument :
 ECD_Q
 ClientSampleId :
 BF3Q1



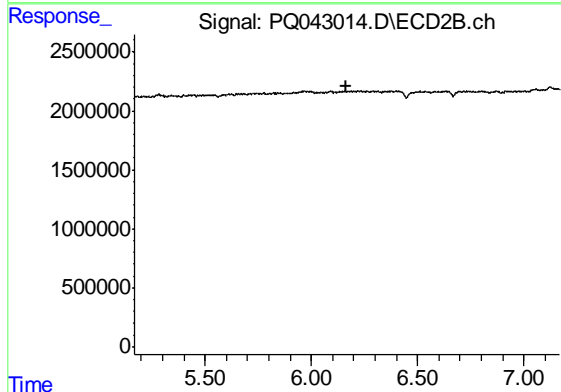
#16 AR-1242-1

R.T.: 0.000 min
 Exp R.T. : 6.146 min
 Response: 0
 Conc: N.D.



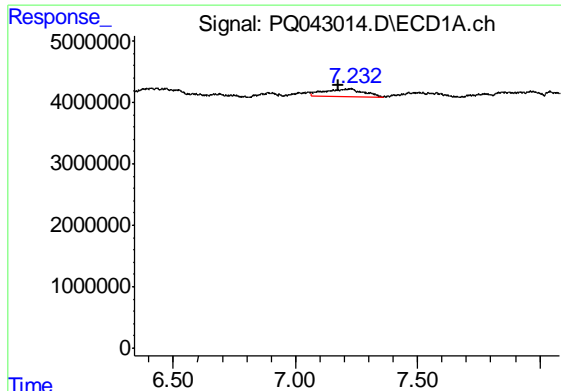
#17 AR-1242-2

R.T.: 7.040 min
 Delta R.T.: -0.066 min
 Response: 2550112
 Conc: 16.74 ng/ml



#17 AR-1242-2

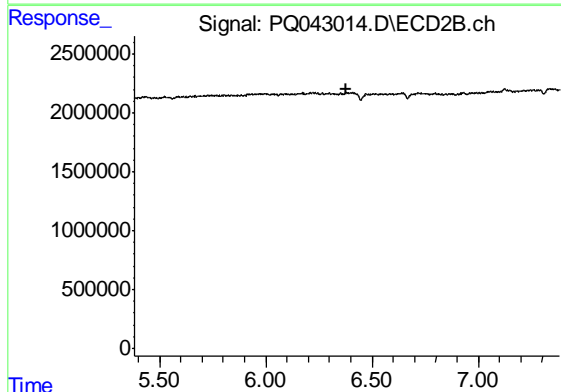
R.T.: 0.000 min
 Exp R.T. : 6.167 min
 Response: 0
 Conc: N.D.



#18 AR-1242-3

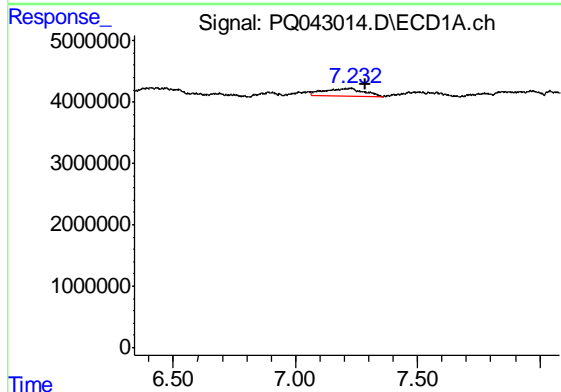
R.T.: 7.229 min
 Delta R.T.: 0.052 min
 Response: 14417153
 Conc: 151.08 ng/ml

Instrument :
 ECD_Q
 ClientSampleId :
 BF3Q1



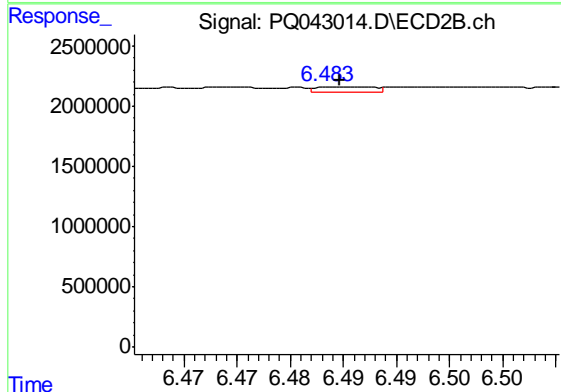
#18 AR-1242-3

R.T.: 0.000 min
 Exp R.T. : 6.381 min
 Response: 0
 Conc: N.D.



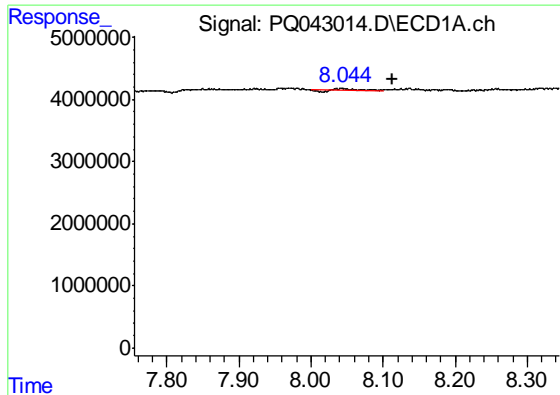
#19 AR-1242-4

R.T.: 7.229 min
 Delta R.T.: -0.060 min
 Response: 14417153
 Conc: 187.29 ng/ml



#19 AR-1242-4

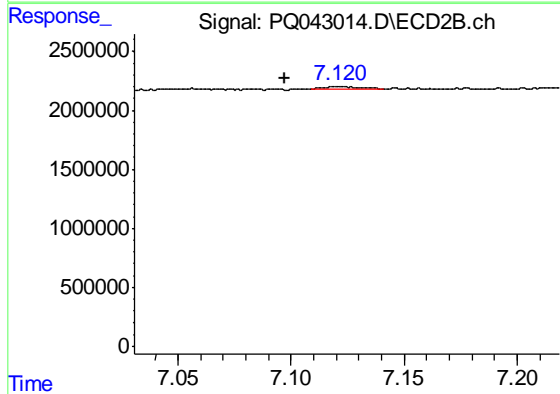
R.T.: 6.484 min
 Delta R.T.: 0.000 min
 Response: 142873
 Conc: 1.71 ng/ml



#20 AR-1242-5

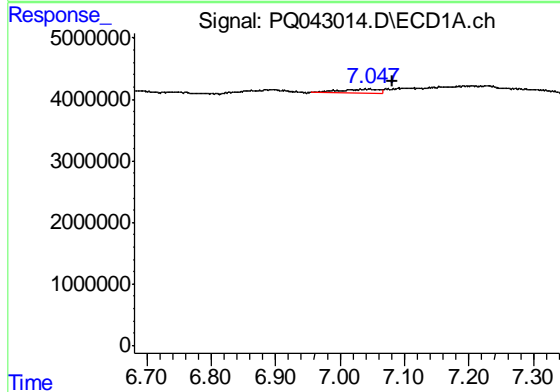
R.T.: 8.043 min
 Delta R.T.: -0.069 min
 Response: 219720
 Conc: 2.29 ng/ml

Instrument :
 ECD_Q
 ClientSampled :
 BF3Q1



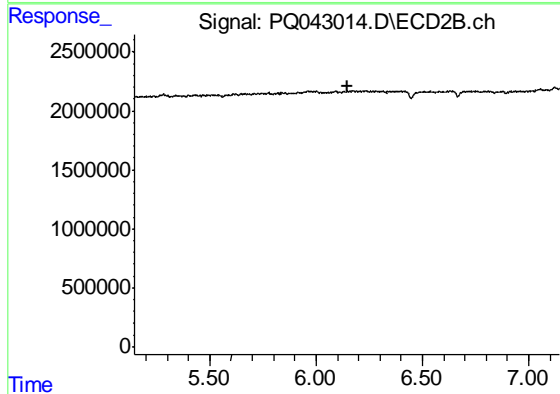
#20 AR-1242-5

R.T.: 7.121 min
 Delta R.T.: 0.024 min
 Response: 245822
 Conc: 2.16 ng/ml



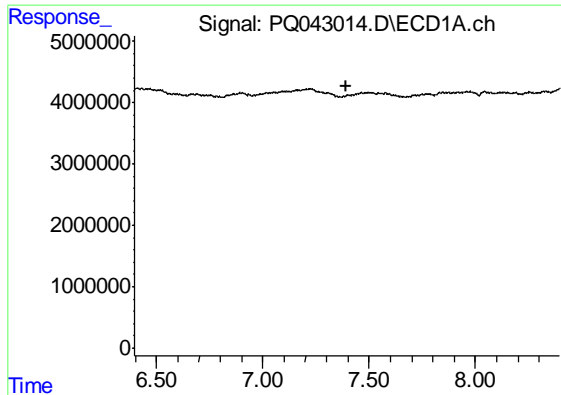
#21 AR-1248-1

R.T.: 7.040 min
 Delta R.T.: -0.042 min
 Response: 2550112
 Conc: 32.26 ng/ml



#21 AR-1248-1

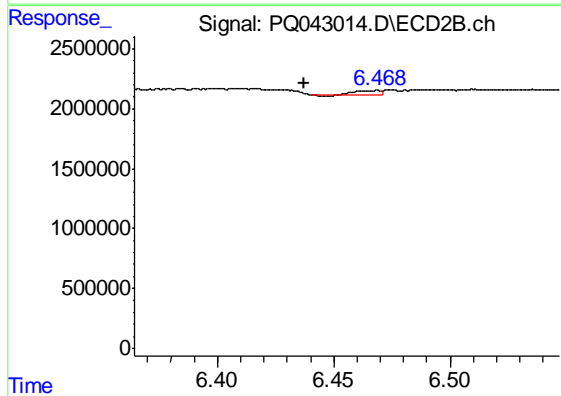
R.T.: 0.000 min
 Exp R.T. : 6.145 min
 Response: 0
 Conc: N.D.



#22 AR-1248-2

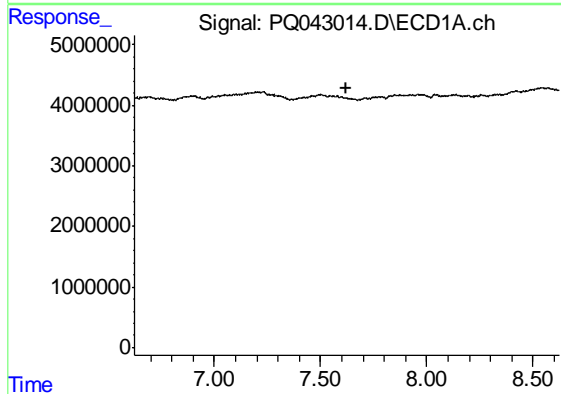
R.T.: 0.000 min
 Exp R.T. : 7.396 min
 Response: 0
 Conc: N.D.

Instrument :
 ECD_Q
 ClientSampled :
 BF3Q1



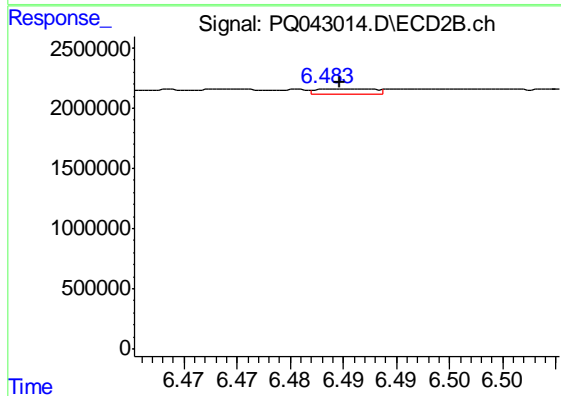
#22 AR-1248-2

R.T.: 6.469 min
 Delta R.T.: 0.032 min
 Response: 200873
 Conc: 1.70 ng/ml



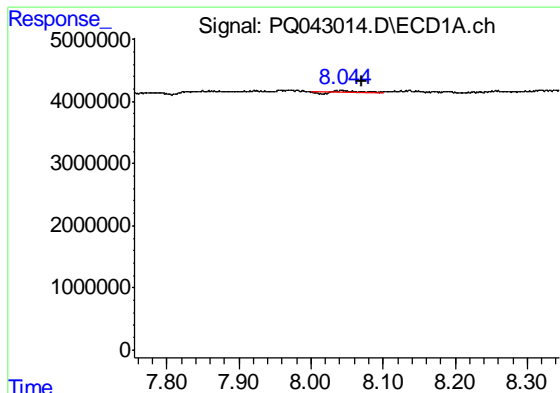
#23 AR-1248-3

R.T.: 0.000 min
 Exp R.T. : 7.624 min
 Response: 0
 Conc: N.D.



#23 AR-1248-3

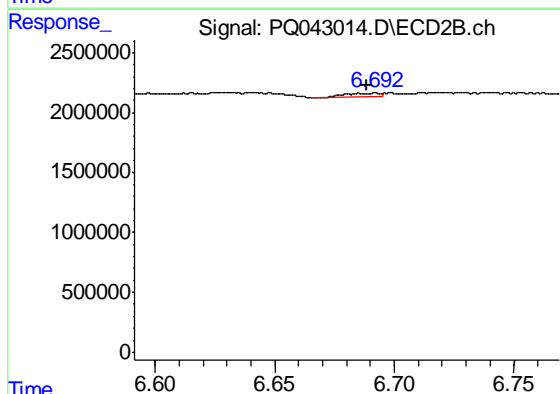
R.T.: 6.484 min
 Delta R.T.: 0.000 min
 Response: 142873
 Conc: 1.18 ng/ml



#24 AR-1248-4

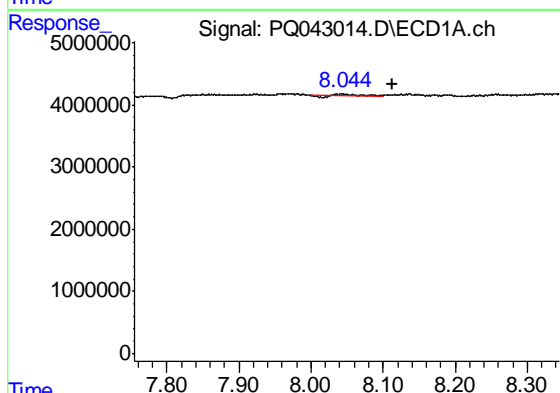
R.T.: 8.043 min
 Delta R.T.: -0.028 min
 Response: 219720
 Conc: 1.36 ng/ml

Instrument :
 ECD_Q
 ClientSampleId :
 BF3Q1



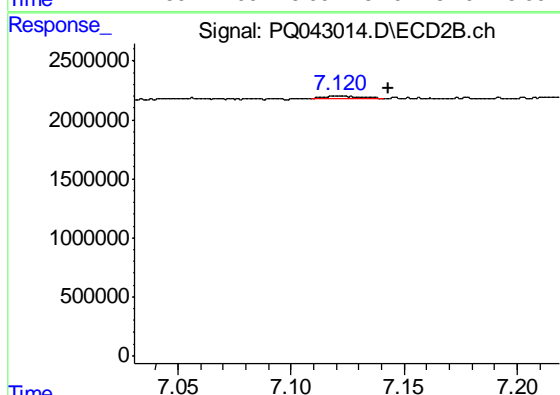
#24 AR-1248-4

R.T.: 6.692 min
 Delta R.T.: 0.004 min
 Response: 308316
 Conc: 2.11 ng/ml



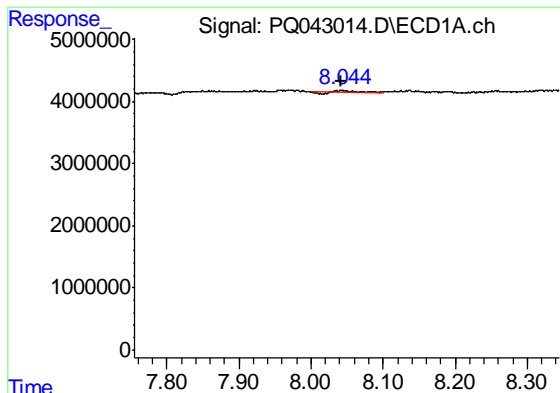
#25 AR-1248-5

R.T.: 8.043 min
 Delta R.T.: -0.070 min
 Response: 219720
 Conc: 1.40 ng/ml



#25 AR-1248-5

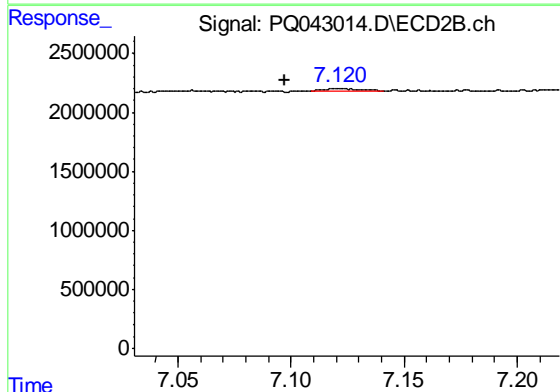
R.T.: 7.121 min
 Delta R.T.: -0.022 min
 Response: 245822
 Conc: 1.58 ng/ml



#26 AR-1254-1

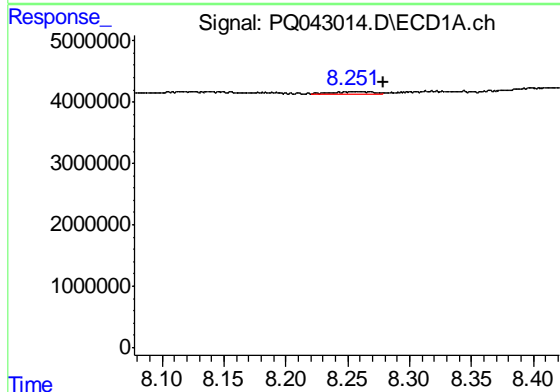
R.T.: 8.043 min
 Delta R.T.: 0.000 min
 Response: 219720
 Conc: 1.31 ng/ml

Instrument :
 ECD_Q
 ClientSampled :
 BF3Q1



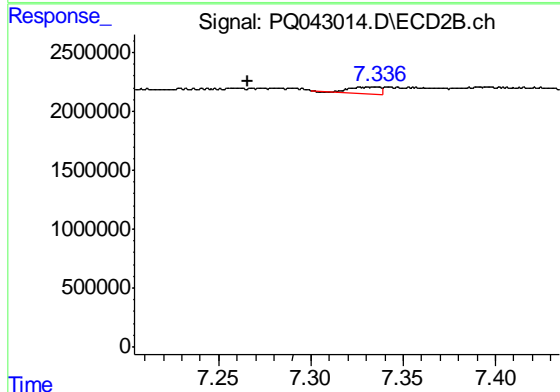
#26 AR-1254-1

R.T.: 7.121 min
 Delta R.T.: 0.023 min
 Response: 245822
 Conc: 1.00 ng/ml



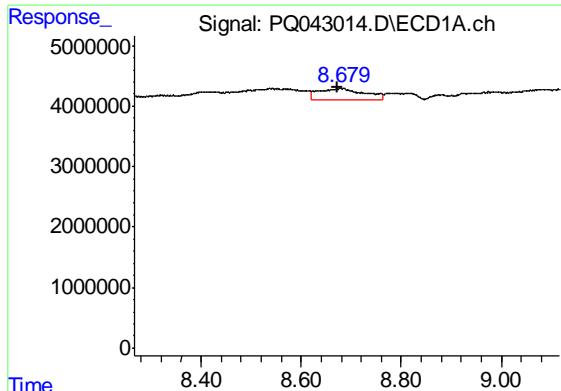
#27 AR-1254-2

R.T.: 8.256 min
 Delta R.T.: -0.023 min
 Response: 854009
 Conc: 3.18 ng/ml



#27 AR-1254-2

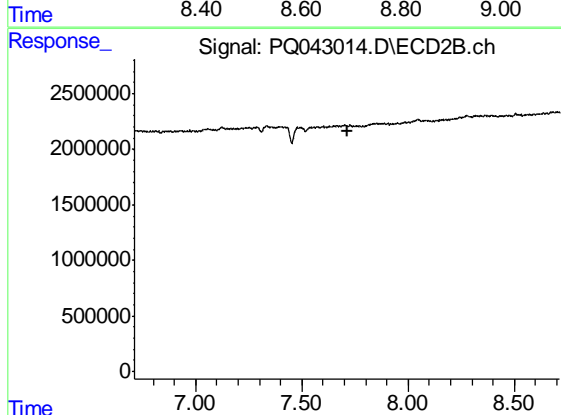
R.T.: 7.336 min
 Delta R.T.: 0.070 min
 Response: 597889
 Conc: 2.68 ng/ml



#28 AR-1254-3

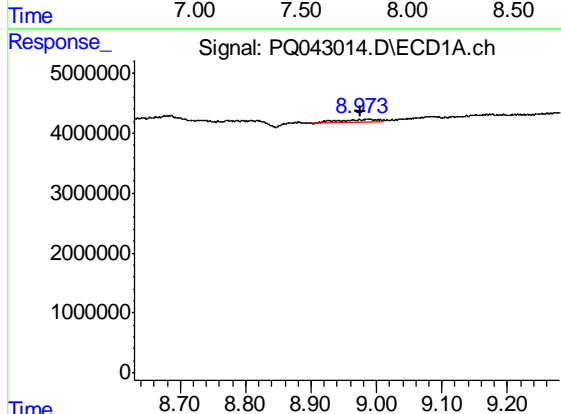
R.T.: 8.681 min
 Delta R.T.: 0.009 min
 Response: 11347185
 Conc: 37.68 ng/ml

Instrument :
 ECD_Q
 ClientSampled :
 BF3Q1



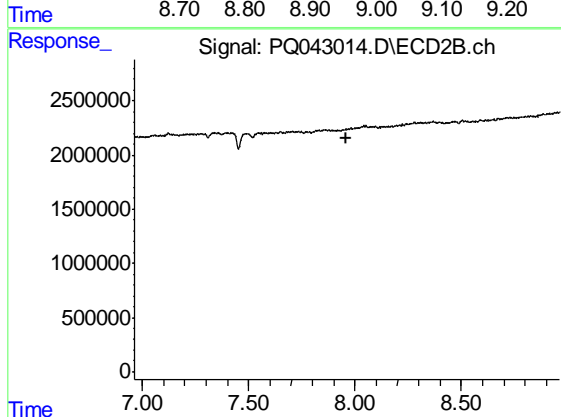
#28 AR-1254-3

R.T.: 0.000 min
 Exp R.T. : 7.712 min
 Response: 0
 Conc: N.D.



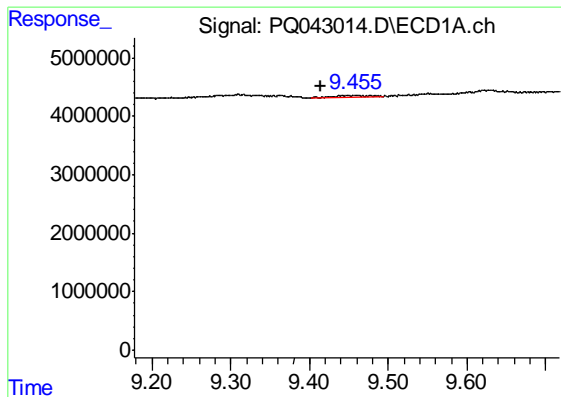
#29 AR-1254-4

R.T.: 8.988 min
 Delta R.T.: 0.012 min
 Response: 1400340
 Conc: 6.15 ng/ml



#29 AR-1254-4

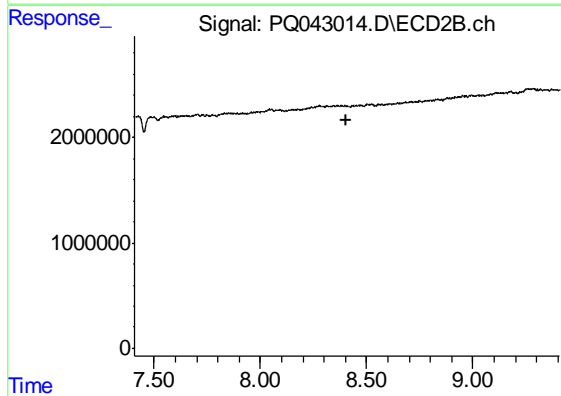
R.T.: 0.000 min
 Exp R.T. : 7.962 min
 Response: 0
 Conc: N.D.



#30 AR-1254-5

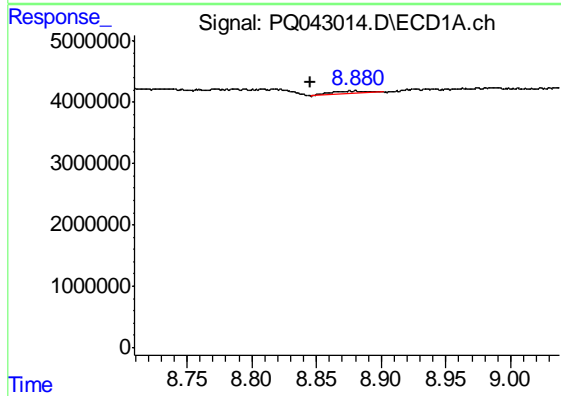
R.T.: 9.454 min
 Delta R.T.: 0.039 min
 Response: 948132
 Conc: 3.50 ng/ml

Instrument :
 ECD_Q
 ClientSampleId :
 BF3Q1



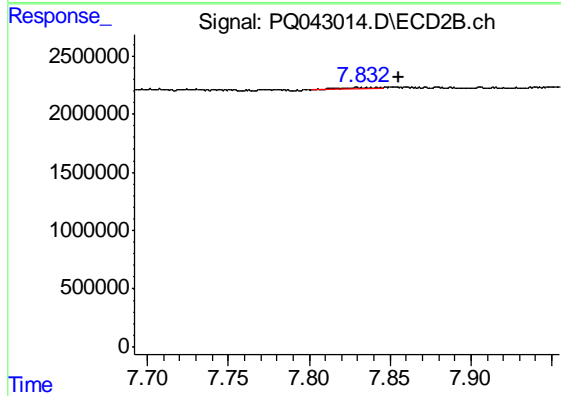
#30 AR-1254-5

R.T.: 0.000 min
 Exp R.T. : 8.407 min
 Response: 0
 Conc: N.D.



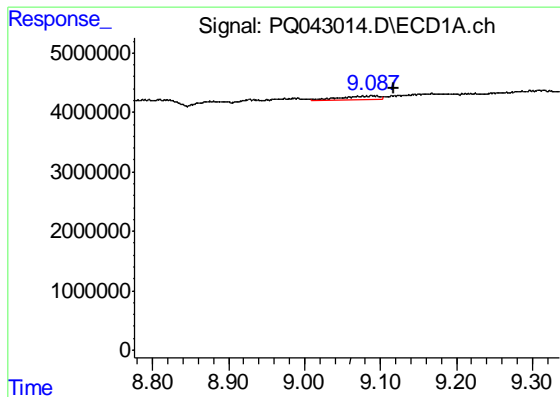
#31 AR-1260-1

R.T.: 8.880 min
 Delta R.T.: 0.034 min
 Response: 871916
 Conc: 4.87 ng/ml



#31 AR-1260-1

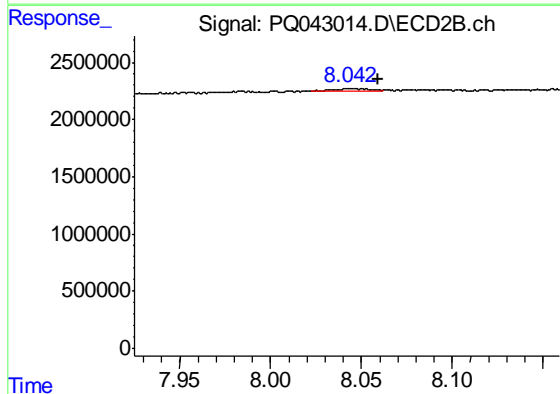
R.T.: 7.832 min
 Delta R.T.: -0.023 min
 Response: 202061
 Conc: 1.04 ng/ml



#32 AR-1260-2

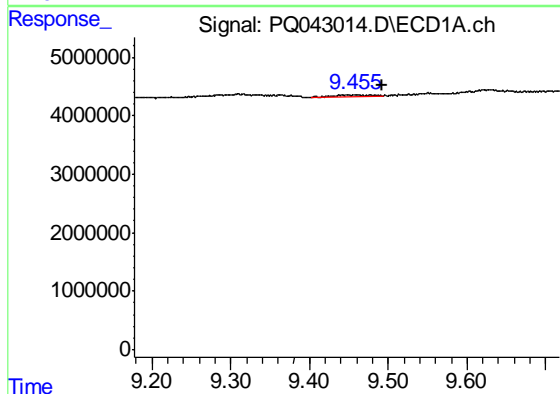
R.T.: 9.087 min
 Delta R.T.: -0.031 min
 Response: 1904330
 Conc: 8.10 ng/ml

Instrument :
 ECD_Q
 ClientSampleId :
 BF3Q1



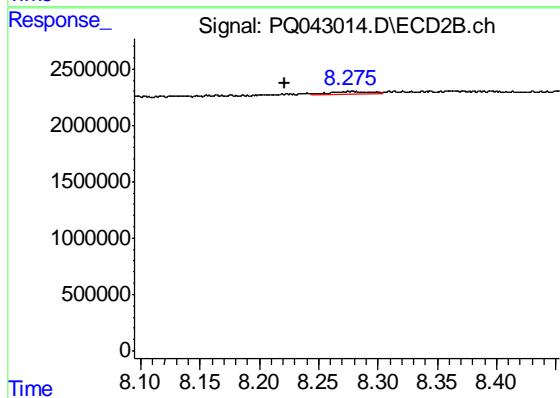
#32 AR-1260-2

R.T.: 8.043 min
 Delta R.T.: -0.016 min
 Response: 269477
 Conc: 1.06 ng/ml



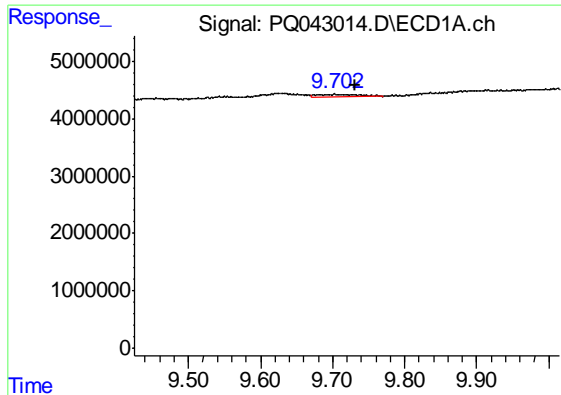
#33 AR-1260-3

R.T.: 9.454 min
 Delta R.T.: -0.038 min
 Response: 948132
 Conc: 4.44 ng/ml



#33 AR-1260-3

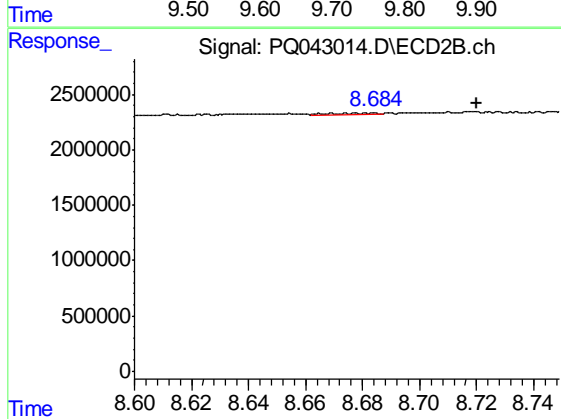
R.T.: 8.275 min
 Delta R.T.: 0.053 min
 Response: 401691
 Conc: 1.76 ng/ml



#34 AR-1260-4

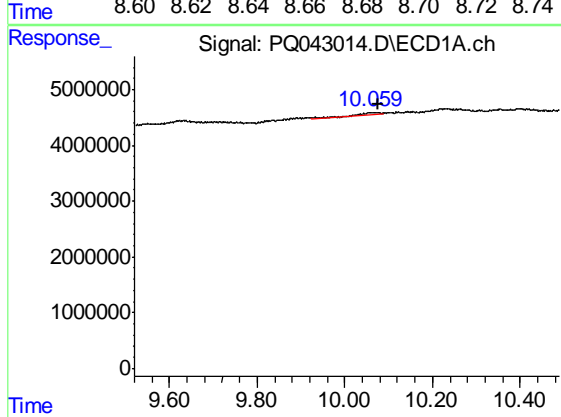
R.T.: 9.713 min
 Delta R.T.: -0.018 min
 Response: 1528267
 Conc: 6.48 ng/ml

Instrument :
 ECD_Q
 ClientSampled :
 BF3Q1



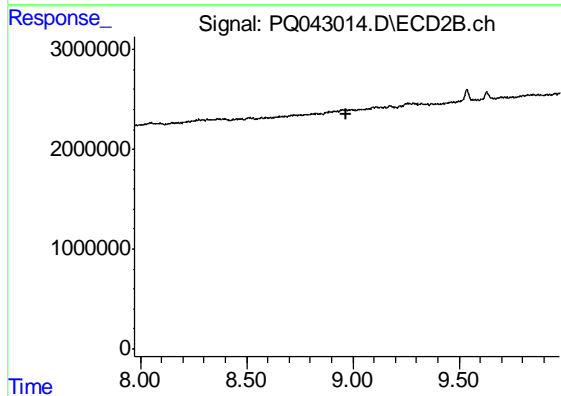
#34 AR-1260-4

R.T.: 8.684 min
 Delta R.T.: -0.036 min
 Response: 103218
 Conc: 0.48 ng/ml



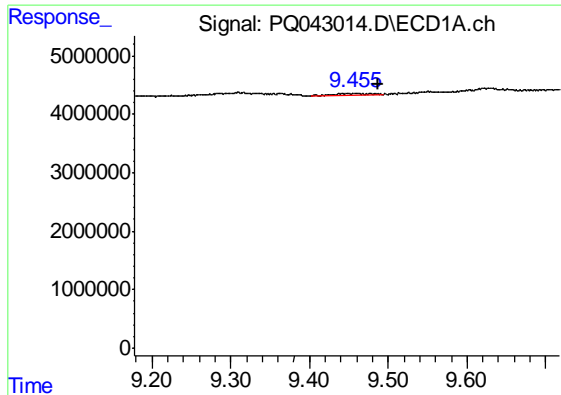
#35 AR-1260-5

R.T.: 10.059 min
 Delta R.T.: -0.017 min
 Response: 500099
 Conc: 0.88 ng/ml



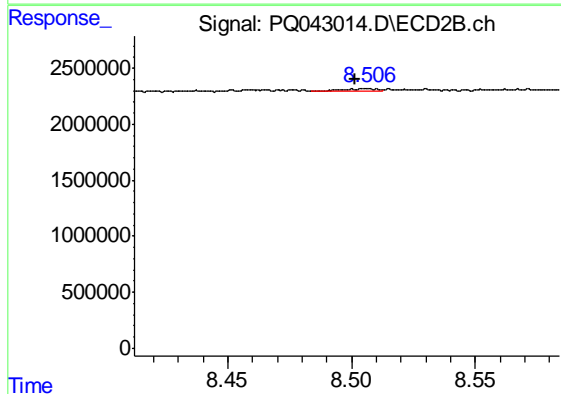
#35 AR-1260-5

R.T.: 0.000 min
 Exp R.T. : 8.972 min
 Response: 0
 Conc: N.D.

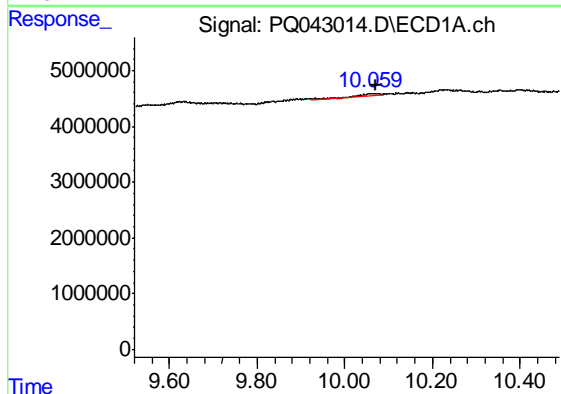


#36 AR-1262-1
 R.T.: 9.454 min
 Delta R.T.: -0.034 min
 Response: 948132
 Conc: 2.36 ng/ml

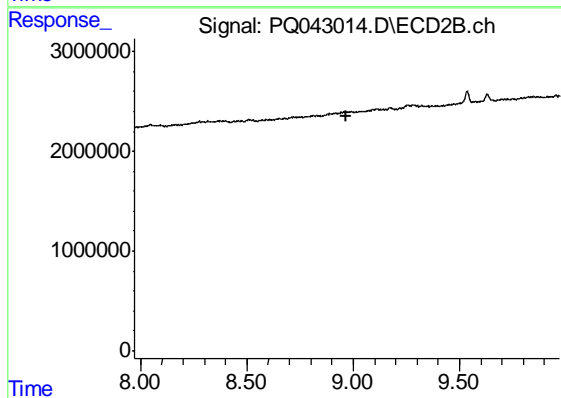
Instrument :
 ECD_Q
 ClientSampled :
 BF3Q1



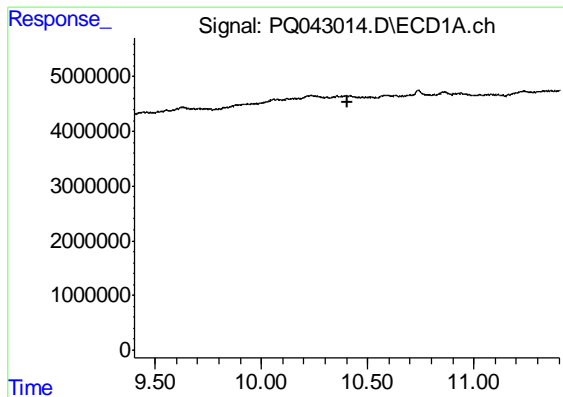
#36 AR-1262-1
 R.T.: 8.506 min
 Delta R.T.: 0.005 min
 Response: 193542
 Conc: 1.04 ng/ml



#37 AR-1262-2
 R.T.: 10.059 min
 Delta R.T.: -0.013 min
 Response: 500099
 Conc: 0.63 ng/ml



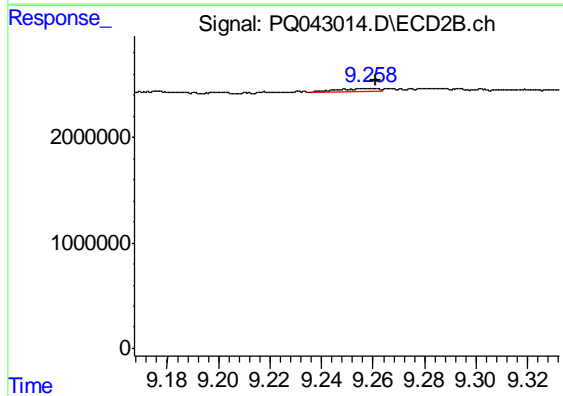
#37 AR-1262-2
 R.T.: 0.000 min
 Exp R.T. : 8.970 min
 Response: 0
 Conc: N.D.



#38 AR-1262-3

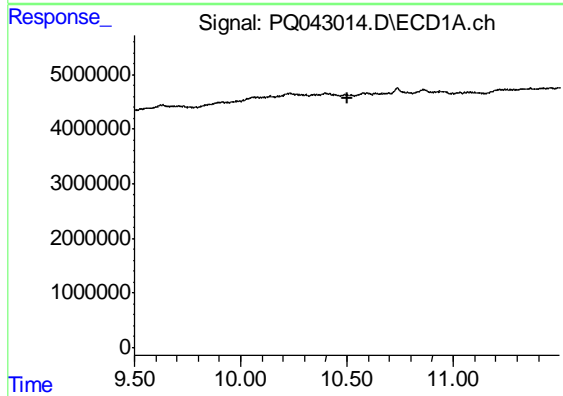
R.T.: 0.000 min
 Exp R.T. : 10.402 min
 Response: 0
 Conc: N.D.

Instrument :
 ECD_Q
 ClientSampleId :
 BF3Q1



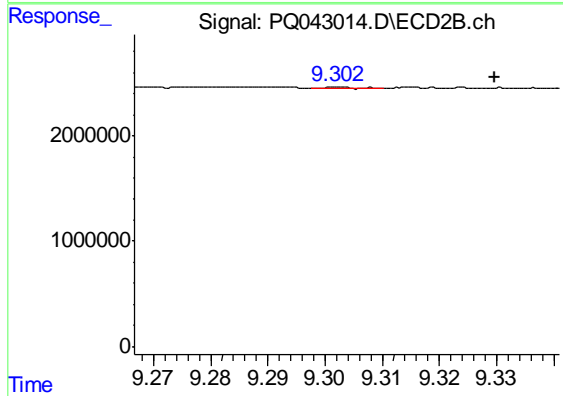
#38 AR-1262-3

R.T.: 9.258 min
 Delta R.T.: -0.003 min
 Response: 358695
 Conc: 0.96 ng/ml



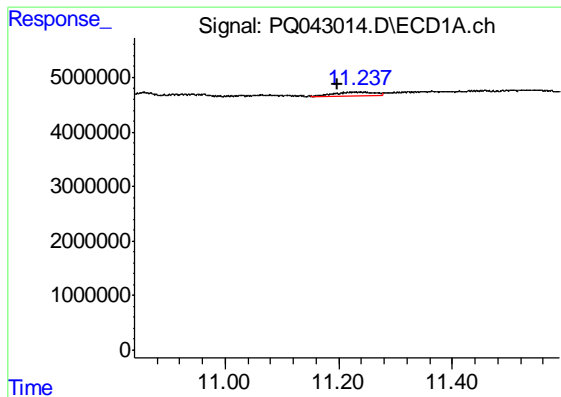
#39 AR-1262-4

R.T.: 0.000 min
 Exp R.T. : 10.500 min
 Response: 0
 Conc: N.D.



#39 AR-1262-4

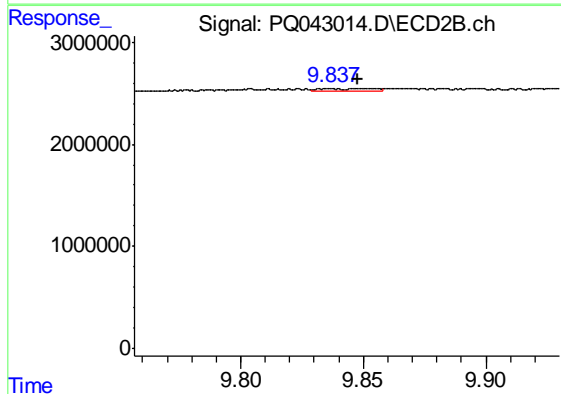
R.T.: 9.302 min
 Delta R.T.: -0.028 min
 Response: 54884
 Conc: 0.08 ng/ml



#40 AR-1262-5

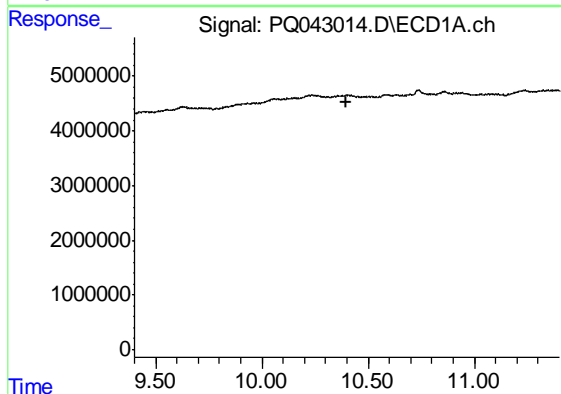
R.T.: 11.237 min
 Delta R.T.: 0.039 min
 Response: 3236019
 Conc: 8.67 ng/ml

Instrument :
 ECD_Q
 ClientSampled :
 BF3Q1



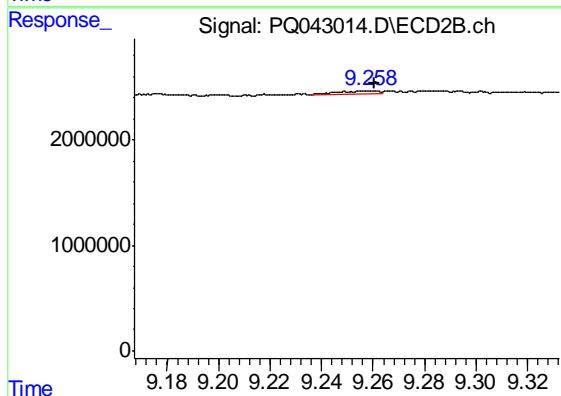
#40 AR-1262-5

R.T.: 9.851 min
 Delta R.T.: 0.003 min
 Response: 314453
 Conc: 0.96 ng/ml



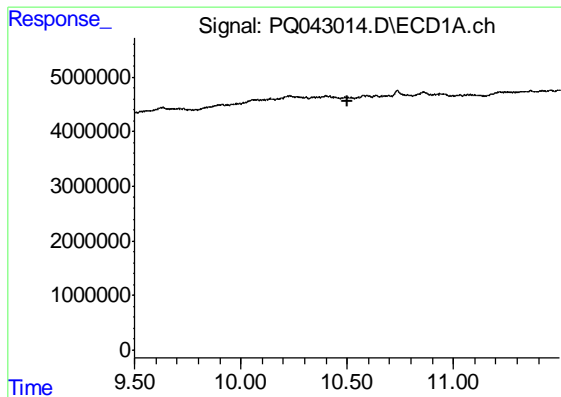
#41 AR-1268-1

R.T.: 0.000 min
 Exp R.T. : 10.400 min
 Response: 0
 Conc: N.D.



#41 AR-1268-1

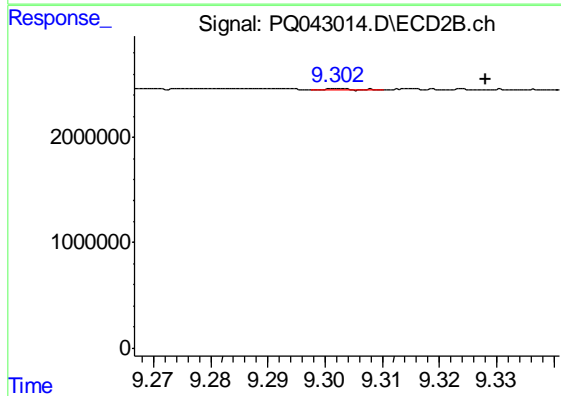
R.T.: 9.258 min
 Delta R.T.: -0.003 min
 Response: 358695
 Conc: 0.34 ng/ml



#42 AR-1268-2

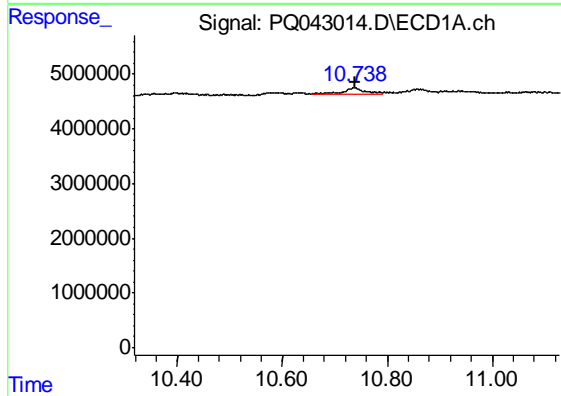
R.T.: 0.000 min
 Exp R.T. : 10.499 min
 Response: 0
 Conc: N.D.

Instrument :
 ECD_Q
 ClientSampleId :
 BF3Q1



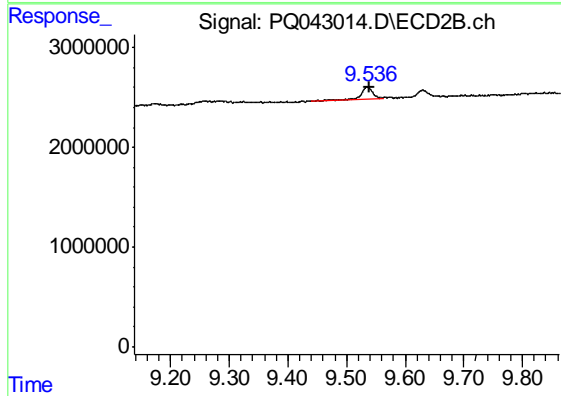
#42 AR-1268-2

R.T.: 9.302 min
 Delta R.T.: -0.026 min
 Response: 54884
 Conc: 0.05 ng/ml



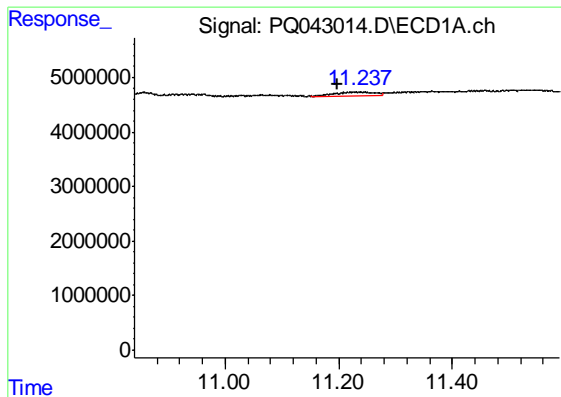
#43 AR-1268-3

R.T.: 10.736 min
 Delta R.T.: -0.003 min
 Response: 3137888
 Conc: 3.28 ng/ml



#43 AR-1268-3

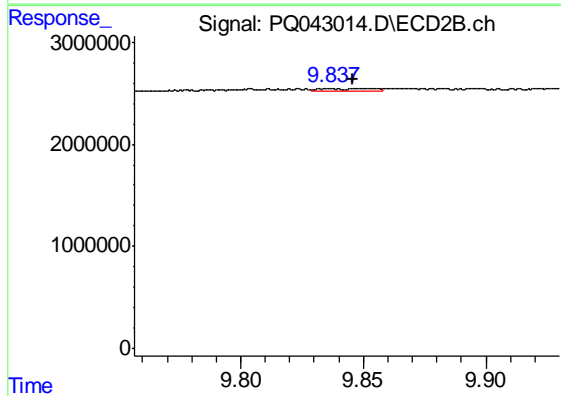
R.T.: 9.536 min
 Delta R.T.: -0.003 min
 Response: 1685093
 Conc: 1.91 ng/ml



#44 AR-1268-4

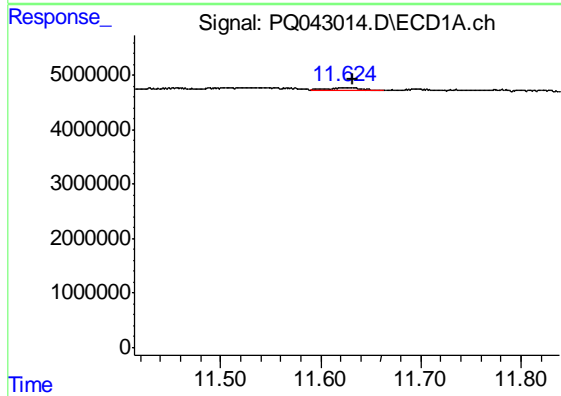
R.T.: 11.237 min
 Delta R.T.: 0.041 min
 Response: 3236019
 Conc: 8.07 ng/ml

Instrument :
 ECD_Q
 ClientSampleId :
 BF3Q1



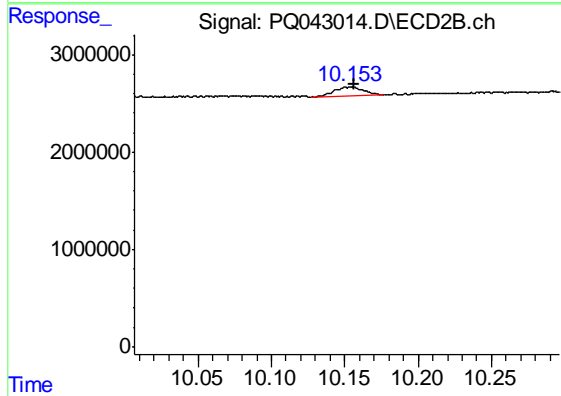
#44 AR-1268-4

R.T.: 9.851 min
 Delta R.T.: 0.005 min
 Response: 314453
 Conc: 0.88 ng/ml



#45 AR-1268-5

R.T.: 11.625 min
 Delta R.T.: -0.007 min
 Response: 1216739
 Conc: 0.36 ng/ml



#45 AR-1268-5

R.T.: 10.155 min
 Delta R.T.: -0.002 min
 Response: 1272674
 Conc: 0.46 ng/ml