

Data Path : Z:\pestpcbsrv\HPCHEM1\ECD_Q\Data\PQ082724\
 Data File : PQ068273.D
 Signal(s) : Signal #1: ECD1A.ch Signal #2: ECD2B.ch
 Acq On : 28 Aug 2024 06:39
 Operator : YP\AJ
 Sample : P3721-13
 Misc :
 ALS Vial : 79 Sample Multiplier: 1

Instrument :
 ECD_Q
 ClientSampleId :
 DCXZ8

Integration File signal 1: autoint1.e
 Integration File signal 2: autoint2.e
 Quant Time: Aug 28 08:34:23 2024
 Quant Method : Z:\pestpcbsrv\HPCHEM1\ECD_Q\Method\PQ082724CLP.M
 Quant Title : GC EXTRACTABLES
 QLast Update : Wed Aug 28 02:08:25 2024
 Response via : Initial Calibration
 Integrator: ChemStation

Volume Inj. : 1 µl
 Signal #1 Phase : ZB MR1 Signal #2 Phase: ZB MR2
 Signal #1 Info : 30Mx0.32mmx 0.5µm Signal #2 Info : 30M x 0.32mm x 0.25µm

Compound	RT#1	RT#2	Resp#1	Resp#2	ng/ml	ng/ml
System Monitoring Compounds						
1) SA Tetrachlo...	3.438	2.822	152.6E6	145.9E6	19.320	20.594
2) SA Decachlor...	8.609	7.600	79349864	128.6E6	34.888	38.022
Target Compounds						
3) L1 AR-1016-1	4.535	3.814	11126470	1136076	49.229	5.193 #
4) L1 AR-1016-2	4.535	3.861	11126470	12073878	31.613	36.870
5) L1 AR-1016-3	4.629	4.056f	48168951	1667590	221.321	9.507 #
6) L1 AR-1016-4	4.742	4.056	53183988	1667590	294.035	11.437 #
7) L1 AR-1016-5	4.988	4.239	3587136	6181492	20.640	33.565 #
8) L2 AR-1221-1	3.628	3.008	4727506	2537979	51.486	29.704 #
9) L2 AR-1221-2	3.717	3.092	5630501	3100284	88.195	52.011 #
10) L2 AR-1221-3	3.780	3.169	1108503	4907009	5.367	25.399 #
11) L3 AR-1232-1	3.780	3.169	1108503	4907009	6.715	32.250 #
12) L3 AR-1232-2	4.287	3.861	23511922	12073878	258.863	77.857 #
13) L3 AR-1232-3	4.535	4.056f	11126470	1667590	65.792	20.508 #
14) L3 AR-1232-4	4.742	4.082	53183988	4026492	615.549	57.644 #
15) L3 AR-1232-5	4.805	4.239	21154199	6181492	374.601	78.641 #
16) L4 AR-1242-1	4.535	3.814	11126470	1136076	54.434	5.872 #
17) L4 AR-1242-2	4.535	3.861	11126470	12073878	35.559	41.545
18) L4 AR-1242-3	4.629	4.056f	48168951	1667590	246.193	10.766 #
19) L4 AR-1242-4	4.742	4.082	53183988	4026492	329.065	27.519 #
20) L4 AR-1242-5	5.464f	4.562	75509919	4342940	446.617	22.466 #
21) L5 AR-1248-1	4.535	3.814	11126470	1136076	72.269	7.964 #
22) L5 AR-1248-2	4.805	4.056	21154199	1667590	100.666	7.539 #
23) L5 AR-1248-3	4.988	4.082	3587136	4026492	14.217	18.751 #
24) L5 AR-1248-4	5.337f	4.239	99738160	6181492	354.704	23.407 #
25) L5 AR-1248-5	5.464f	4.617	75509919	23037182	267.499	87.079 #
26) L6 AR-1254-1	5.337	4.562	99738160	4342940	360.523	11.053 #
27) L6 AR-1254-2	5.572	4.741	52417361	6652545	122.750	19.386 #
28) L6 AR-1254-3	5.934	5.111	25402301	16104703	56.558	29.753 #
29) L6 AR-1254-4	6.172f	5.331	128.6E6	15248492	402.287	45.207 #
30) L6 AR-1254-5	6.627	5.751	36978752	12567957	106.653	25.794 #
31) L7 AR-1260-1	6.050f	5.250	23769241	34133115	72.028	93.849 #
32) L7 AR-1260-2	6.342	5.416	52133084	6895188	138.355	15.710 #
33) L7 AR-1260-3	6.696	5.589	56790367	3428995	205.373	7.956 #
34) L7 AR-1260-4	6.923	6.048	39856191	20491594	130.540	60.342 #
35) L7 AR-1260-5	7.222	6.283	16272450	14257973	27.882	17.965 #
36) L8 AR-1262-1	6.696	5.810	56790367	15748903	134.396	30.608 #
37) L8 AR-1262-2	7.222	6.283	16272450	14257973	23.826	15.834 #
38) L8 AR-1262-3	7.483	6.551	1713220	5213238	3.870	15.178 #
39) L8 AR-1262-4	7.593	6.626	9926156	7058808	28.973	10.668 #
40) L8 AR-1262-5	8.072	7.163f	16697569	14905170	79.503	47.688 #
41) L9 AR-1268-1	7.483	6.551	1713220	5213238	2.230	5.233 #

Data Path : Z:\pestpcbsrv\HPCHEM1\ECD_Q\Data\PQ082724\
 Data File : PQ068273.D
 Signal(s) : Signal #1: ECD1A.ch Signal #2: ECD2B.ch
 Acq On : 28 Aug 2024 06:39
 Operator : YP\AJ
 Sample : P3721-13
 Misc :
 ALS Vial : 79 Sample Multiplier: 1

Instrument :
 ECD_Q
 ClientSampleId :
 DCXZ8

Integration File signal 1: autoint1.e
 Integration File signal 2: autoint2.e
 Quant Time: Aug 28 08:34:23 2024
 Quant Method : Z:\pestpcbsrv\HPCHEM1\ECD_Q\Method\PQ082724CLP.M
 Quant Title : GC EXTRACTABLES
 QLast Update : Wed Aug 28 02:08:25 2024
 Response via : Initial Calibration
 Integrator: ChemStation

Volume Inj. : 1 µl
 Signal #1 Phase : ZB MR1 Signal #2 Phase: ZB MR2
 Signal #1 Info : 30Mx0.32mmx 0.5µm Signal #2 Info : 30M x 0.32mm x 0.25µm

	Compound	RT#1	RT#2	Resp#1	Resp#2	ng/ml	ng/ml
42)	L9 AR-1268-2	7.593	6.626	9926156	7058808	13.832	7.566 #
43)	L9 AR-1268-3	7.767	6.862	20511319	29055343	35.500	35.612
44)	L9 AR-1268-4	8.072	7.163f	16697569	14905170	72.458	42.448 #
45)	L9 AR-1268-5	8.380	7.396	11085169	14517639	6.818	6.009

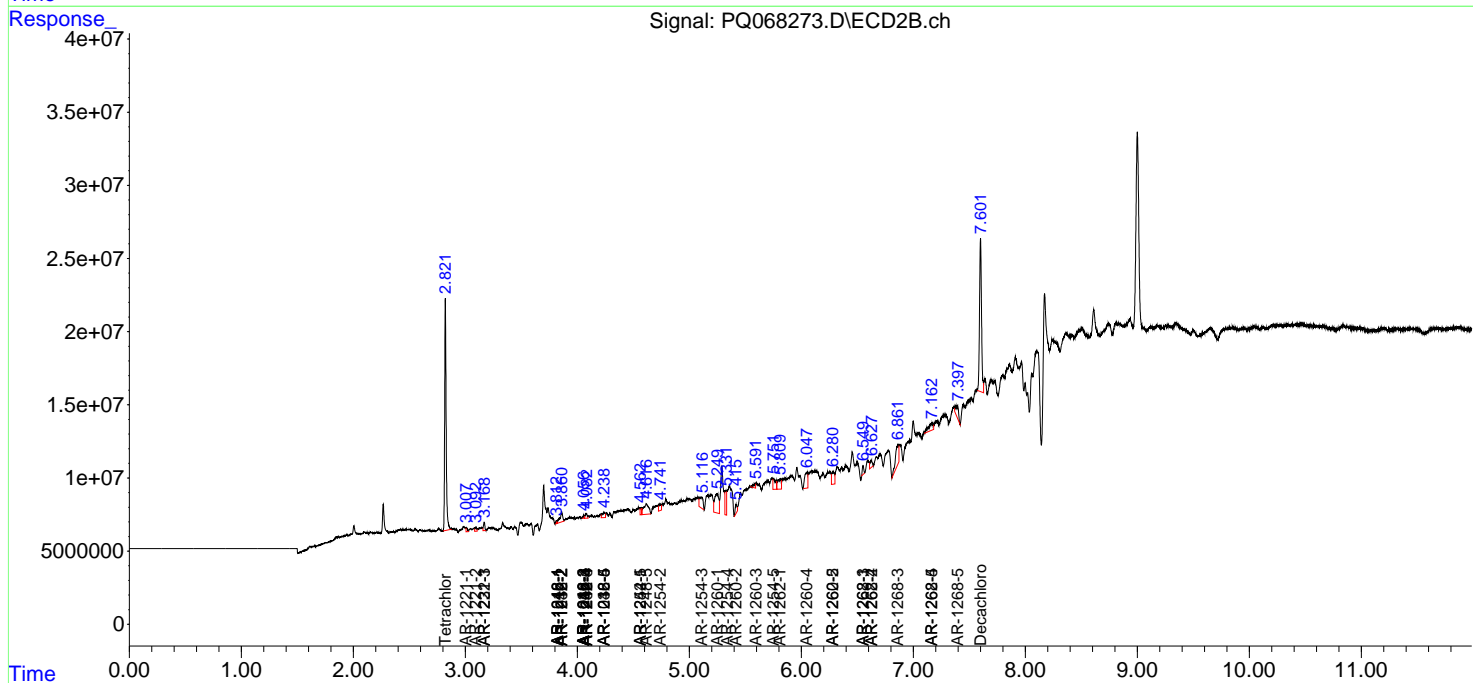
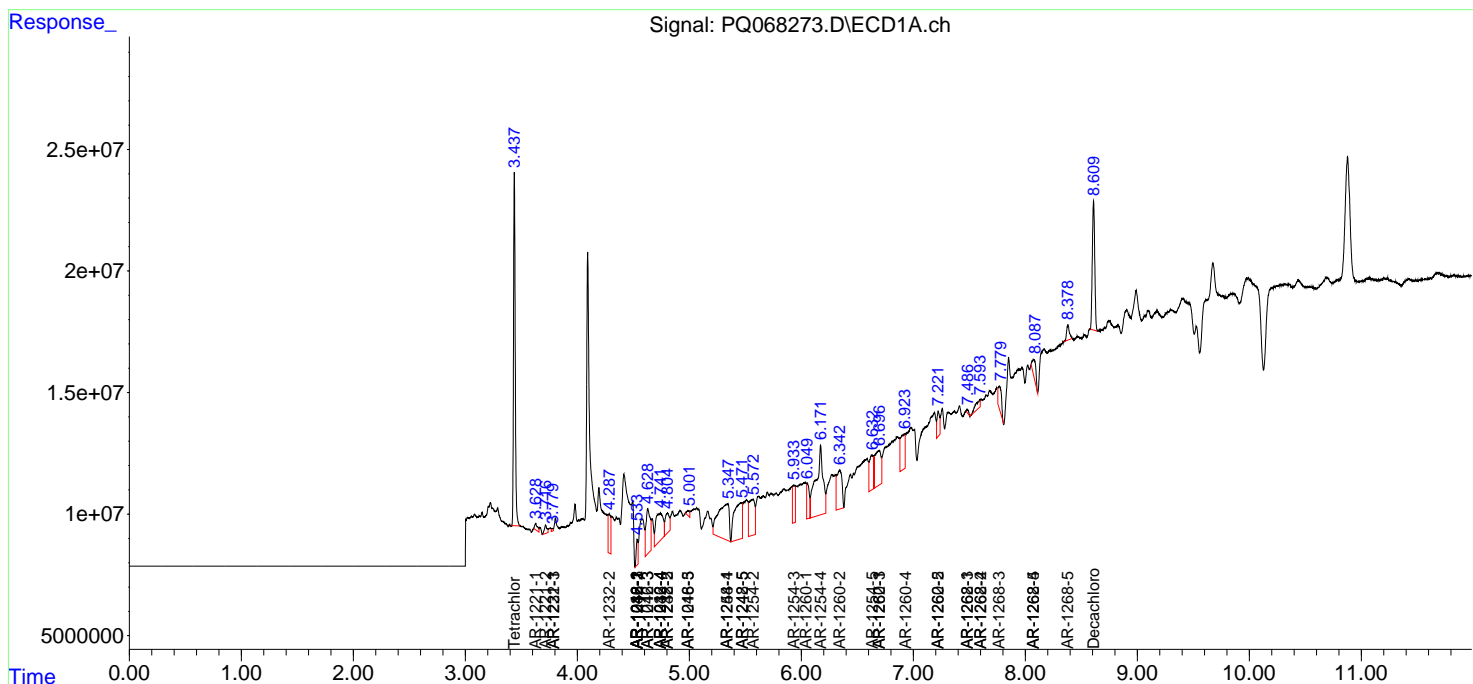
(f)=RT Delta > 1/2 Window (#)=Amounts differ by > 25% (m)=manual int.

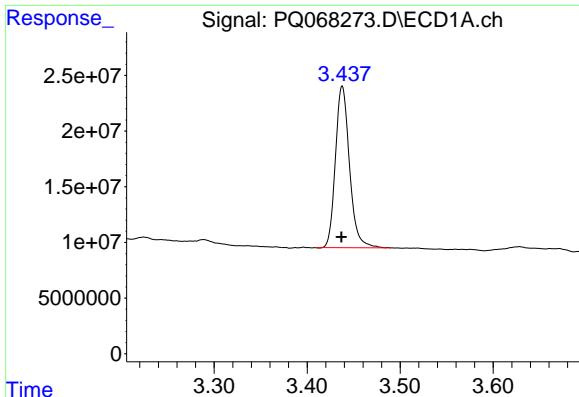
Data Path : Z:\pestpcbsrv\HPCHEM1\ECD_Q\Data\PQ082724\
 Data File : PQ068273.D
 Signal(s) : Signal #1: ECD1A.ch Signal #2: ECD2B.ch
 Acq On : 28 Aug 2024 06:39
 Operator : YP\AJ
 Sample : P3721-13
 Misc :
 ALS Vial : 79 Sample Multiplier: 1

Instrument :
 ECD_Q
 ClientSampleId :
 DCXZ8

Integration File signal 1: autoint1.e
 Integration File signal 2: autoint2.e
 Quant Time: Aug 28 08:34:23 2024
 Quant Method : Z:\pestpcbsrv\HPCHEM1\ECD_Q\Method\PQ082724CLP.M
 Quant Title : GC EXTRACTABLES
 QLast Update : Wed Aug 28 02:08:25 2024
 Response via : Initial Calibration
 Integrator: ChemStation

Volume Inj. : 1 µl
 Signal #1 Phase : ZB MR1 Signal #2 Phase: ZB MR2
 Signal #1 Info : 30Mx0.32mmx 0.5µm Signal #2 Info : 30M x 0.32mm x 0.25µm

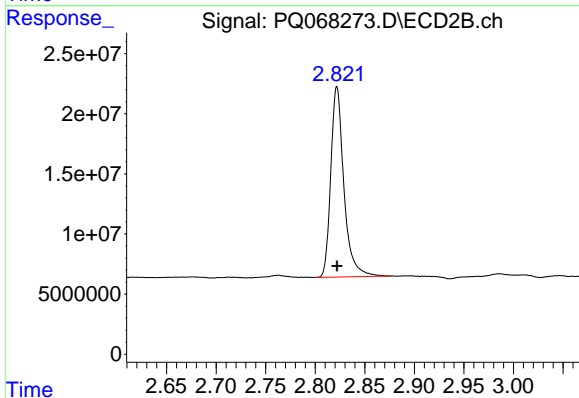




#1 Tetrachloro-m-xylene

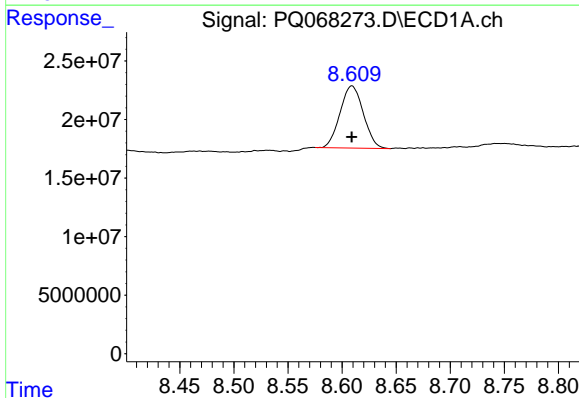
R.T.: 3.438 min
 Delta R.T.: 0.000 min
 Response: 152637285
 Conc: 19.32 ng/ml

Instrument :
 ECD_Q
 ClientSampleId :
 DCXZ8



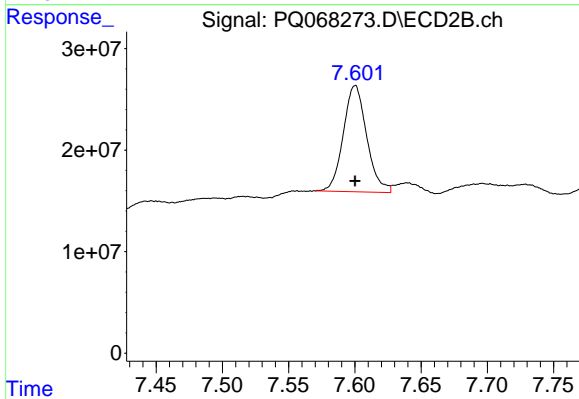
#1 Tetrachloro-m-xylene

R.T.: 2.822 min
 Delta R.T.: 0.000 min
 Response: 145860267
 Conc: 20.59 ng/ml



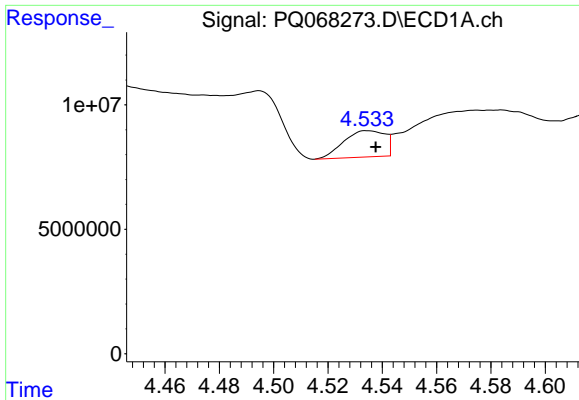
#2 Decachlorobiphenyl

R.T.: 8.609 min
 Delta R.T.: 0.000 min
 Response: 79349864
 Conc: 34.89 ng/ml



#2 Decachlorobiphenyl

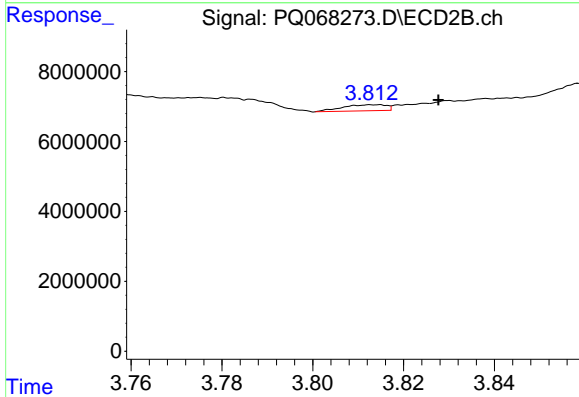
R.T.: 7.600 min
 Delta R.T.: 0.000 min
 Response: 128592816
 Conc: 38.02 ng/ml



#3 AR-1016-1

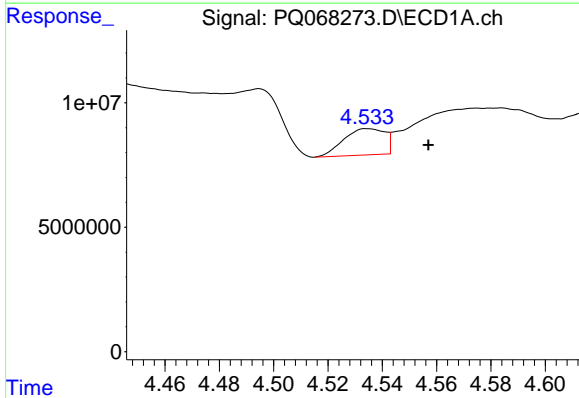
R.T.: 4.535 min
 Delta R.T.: -0.003 min
 Response: 11126470
 Conc: 49.23 ng/ml

Instrument :
 ECD_Q
 ClientSampleId :
 DCXZ8



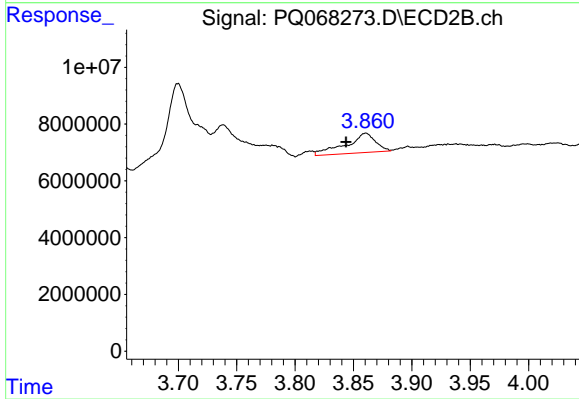
#3 AR-1016-1

R.T.: 3.814 min
 Delta R.T.: -0.014 min
 Response: 1136076
 Conc: 5.19 ng/ml



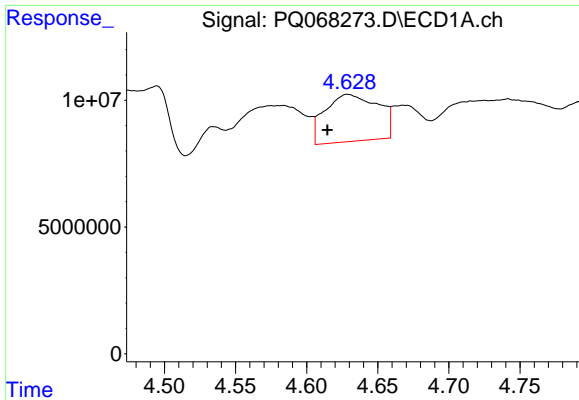
#4 AR-1016-2

R.T.: 4.535 min
 Delta R.T.: -0.022 min
 Response: 11126470
 Conc: 31.61 ng/ml



#4 AR-1016-2

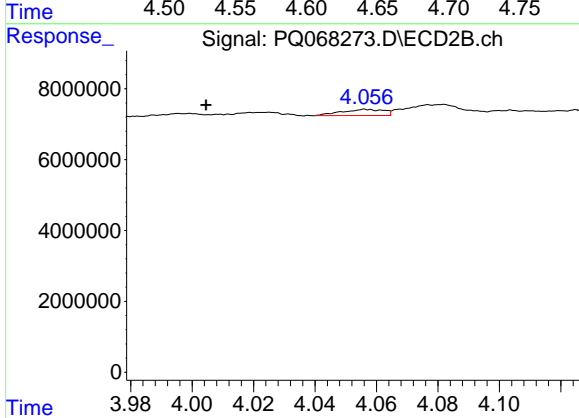
R.T.: 3.861 min
 Delta R.T.: 0.017 min
 Response: 12073878
 Conc: 36.87 ng/ml



#5 AR-1016-3

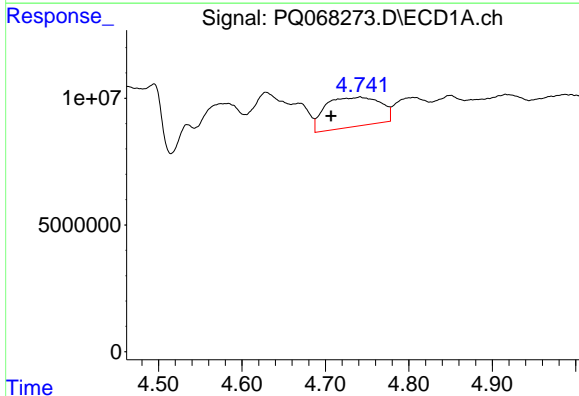
R.T.: 4.629 min
 Delta R.T.: 0.014 min
 Response: 48168951
 Conc: 221.32 ng/ml

Instrument :
 ECD_Q
 ClientSampleId :
 DCXZ8



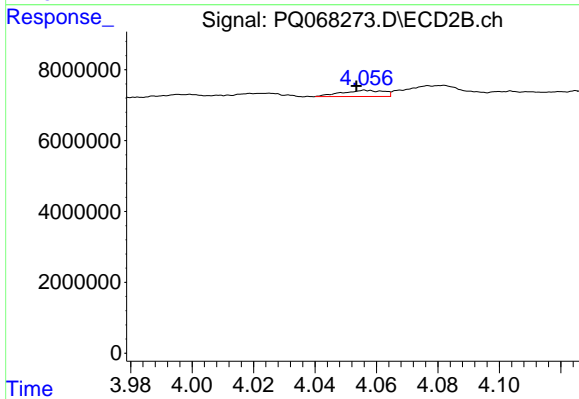
#5 AR-1016-3

R.T.: 4.056 min
 Delta R.T.: 0.052 min
 Response: 1667590
 Conc: 9.51 ng/ml



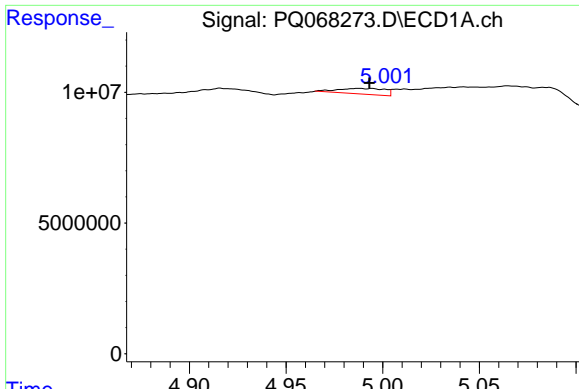
#6 AR-1016-4

R.T.: 4.742 min
 Delta R.T.: 0.035 min
 Response: 53183988
 Conc: 294.04 ng/ml



#6 AR-1016-4

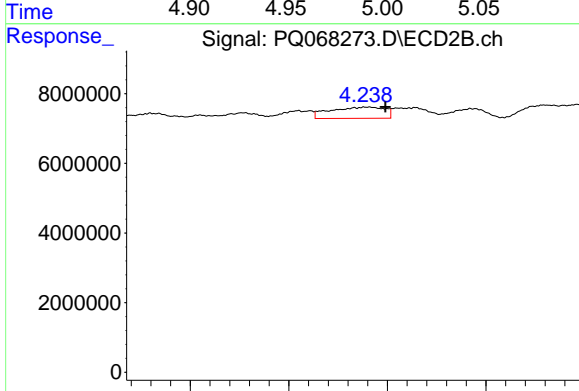
R.T.: 4.056 min
 Delta R.T.: 0.003 min
 Response: 1667590
 Conc: 11.44 ng/ml



#7 AR-1016-5

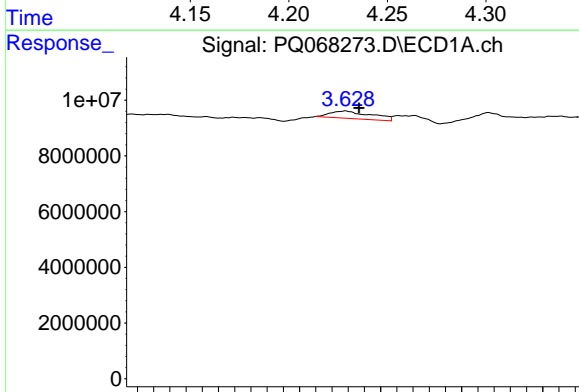
R.T.: 4.988 min
 Delta R.T.: -0.006 min
 Response: 3587136
 Conc: 20.64 ng/ml

Instrument :
 ECD_Q
 ClientSampleId :
 DCXZ8



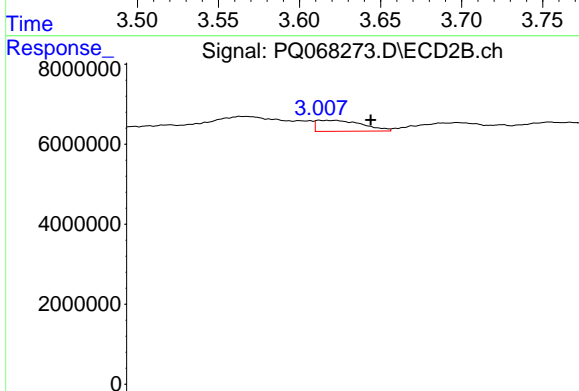
#7 AR-1016-5

R.T.: 4.239 min
 Delta R.T.: -0.011 min
 Response: 6181492
 Conc: 33.57 ng/ml



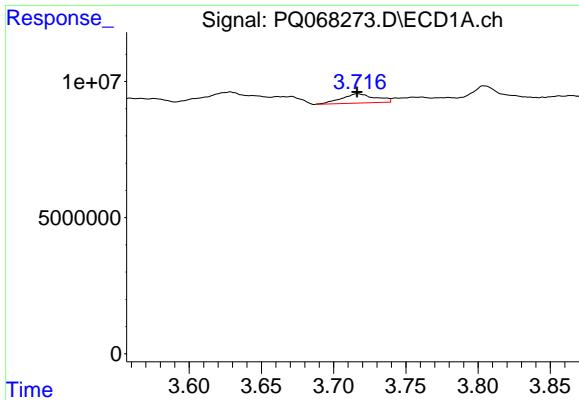
#8 AR-1221-1

R.T.: 3.628 min
 Delta R.T.: -0.008 min
 Response: 4727506
 Conc: 51.49 ng/ml



#8 AR-1221-1

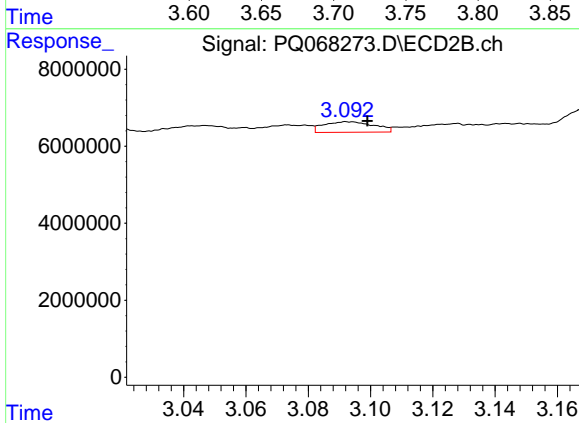
R.T.: 3.008 min
 Delta R.T.: -0.014 min
 Response: 2537979
 Conc: 29.70 ng/ml



#9 AR-1221-2

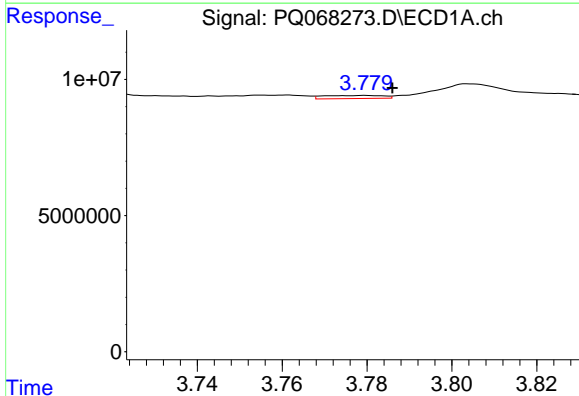
R.T.: 3.717 min
 Delta R.T.: 0.000 min
 Response: 5630501
 Conc: 88.19 ng/ml

Instrument :
 ECD_Q
 ClientSampleId :
 DCXZ8



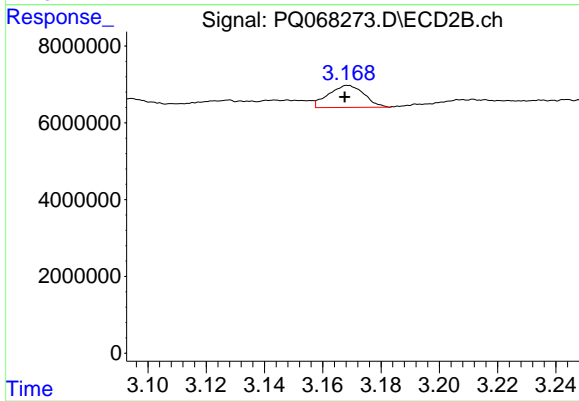
#9 AR-1221-2

R.T.: 3.092 min
 Delta R.T.: -0.007 min
 Response: 3100284
 Conc: 52.01 ng/ml



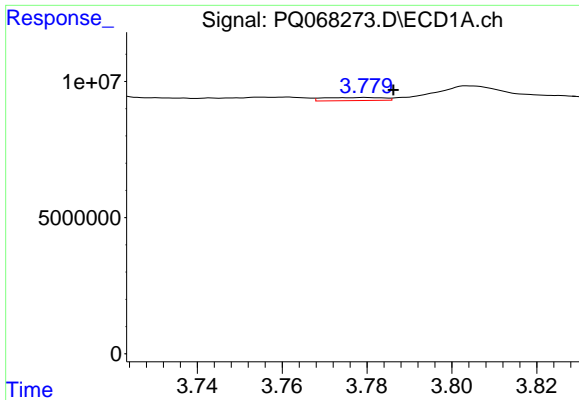
#10 AR-1221-3

R.T.: 3.780 min
 Delta R.T.: -0.006 min
 Response: 1108503
 Conc: 5.37 ng/ml



#10 AR-1221-3

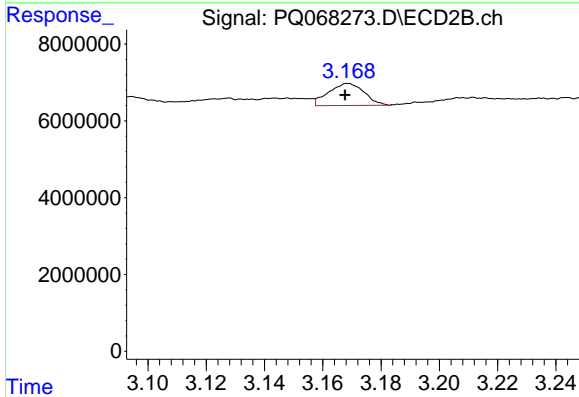
R.T.: 3.169 min
 Delta R.T.: 0.001 min
 Response: 4907009
 Conc: 25.40 ng/ml



#11 AR-1232-1

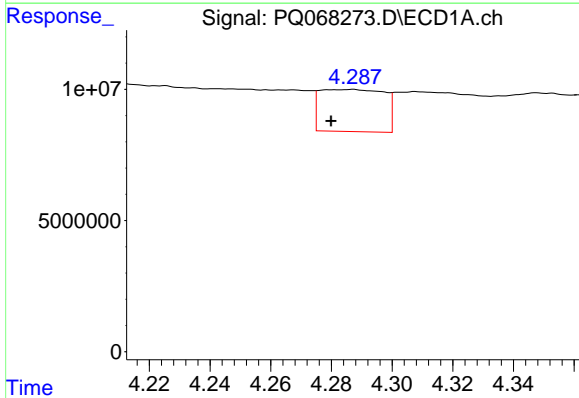
R.T.: 3.780 min
 Delta R.T.: -0.007 min
 Response: 1108503
 Conc: 6.72 ng/ml

Instrument :
 ECD_Q
 ClientSampleId :
 DCXZ8



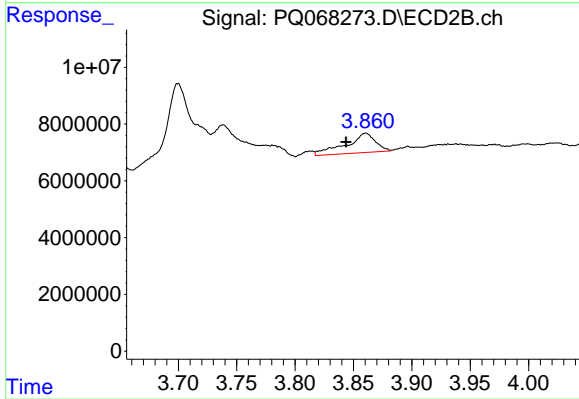
#11 AR-1232-1

R.T.: 3.169 min
 Delta R.T.: 0.001 min
 Response: 4907009
 Conc: 32.25 ng/ml



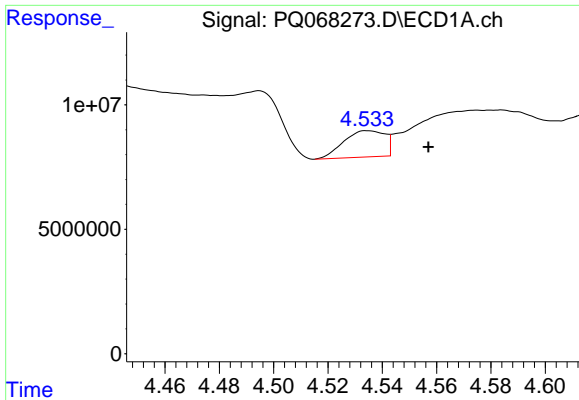
#12 AR-1232-2

R.T.: 4.287 min
 Delta R.T.: 0.007 min
 Response: 23511922
 Conc: 258.86 ng/ml



#12 AR-1232-2

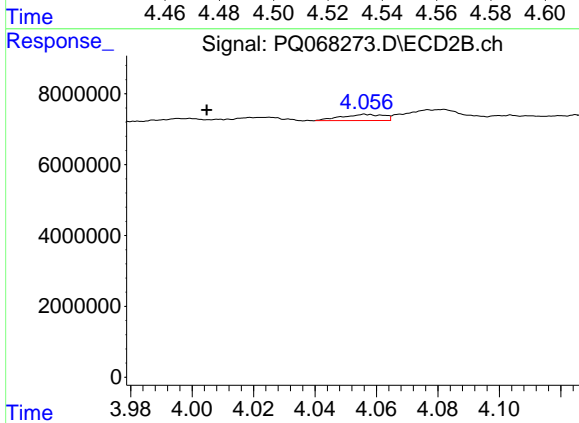
R.T.: 3.861 min
 Delta R.T.: 0.017 min
 Response: 12073878
 Conc: 77.86 ng/ml



#13 AR-1232-3

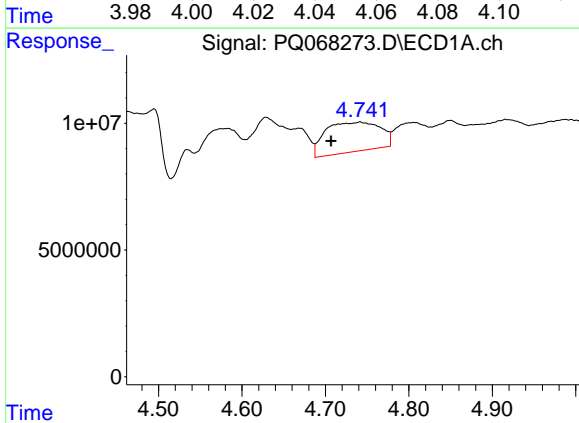
R.T.: 4.535 min
 Delta R.T.: -0.022 min
 Response: 11126470
 Conc: 65.79 ng/ml

Instrument :
 ECD_Q
 ClientSampleId :
 DCXZ8



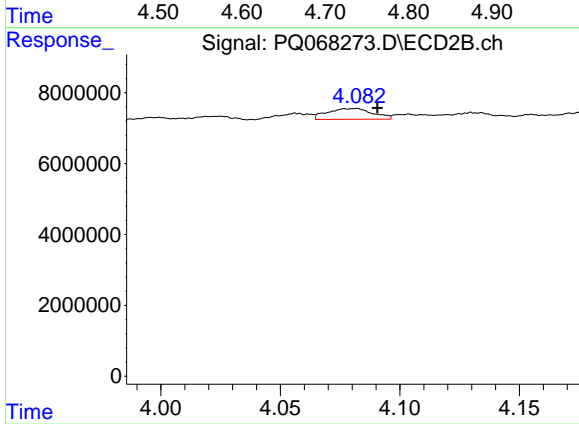
#13 AR-1232-3

R.T.: 4.056 min
 Delta R.T.: 0.052 min
 Response: 1667590
 Conc: 20.51 ng/ml



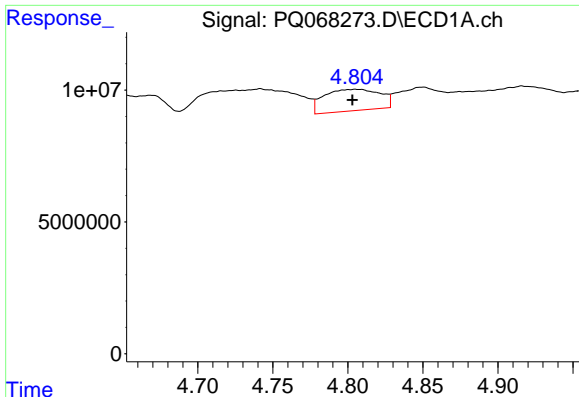
#14 AR-1232-4

R.T.: 4.742 min
 Delta R.T.: 0.035 min
 Response: 53183988
 Conc: 615.55 ng/ml



#14 AR-1232-4

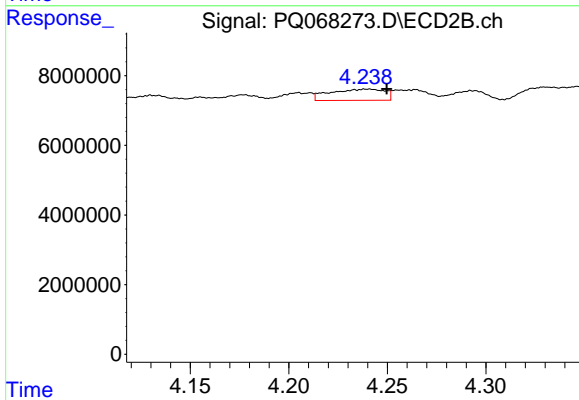
R.T.: 4.082 min
 Delta R.T.: -0.009 min
 Response: 4026492
 Conc: 57.64 ng/ml



#15 AR-1232-5

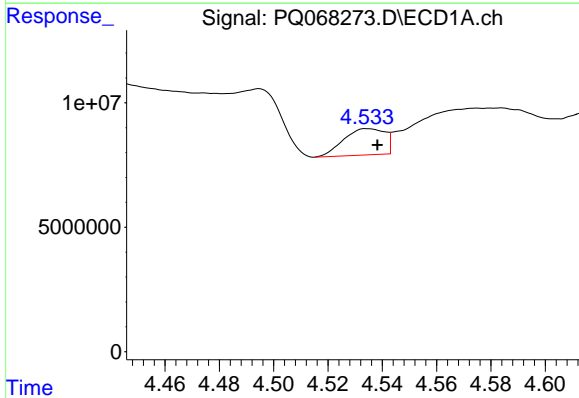
R.T.: 4.805 min
 Delta R.T.: 0.002 min
 Response: 21154199
 Conc: 374.60 ng/ml

Instrument :
 ECD_Q
 ClientSampleId :
 DCXZ8



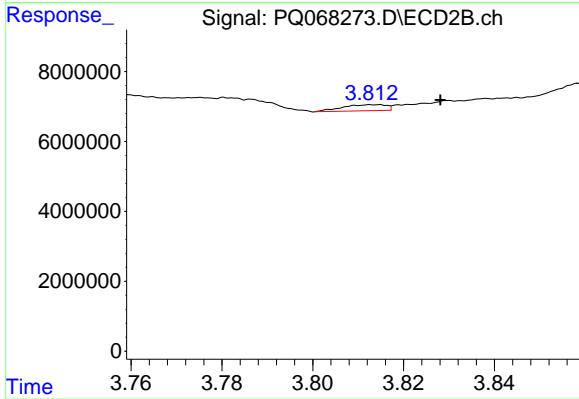
#15 AR-1232-5

R.T.: 4.239 min
 Delta R.T.: -0.011 min
 Response: 6181492
 Conc: 78.64 ng/ml



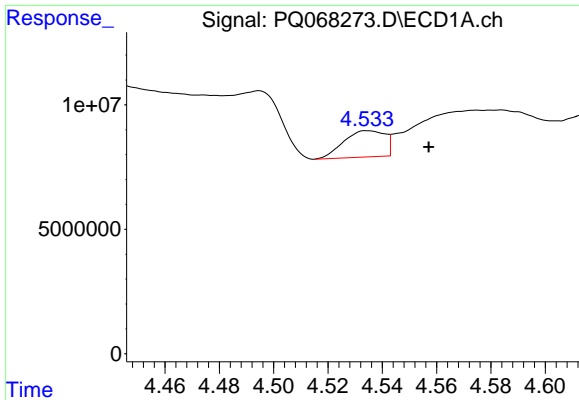
#16 AR-1242-1

R.T.: 4.535 min
 Delta R.T.: -0.004 min
 Response: 11126470
 Conc: 54.43 ng/ml



#16 AR-1242-1

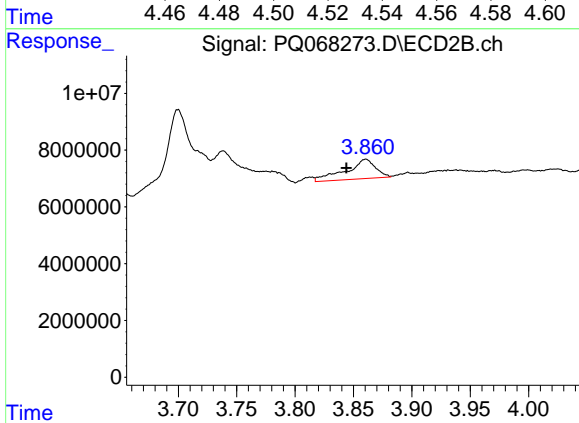
R.T.: 3.814 min
 Delta R.T.: -0.014 min
 Response: 1136076
 Conc: 5.87 ng/ml



#17 AR-1242-2

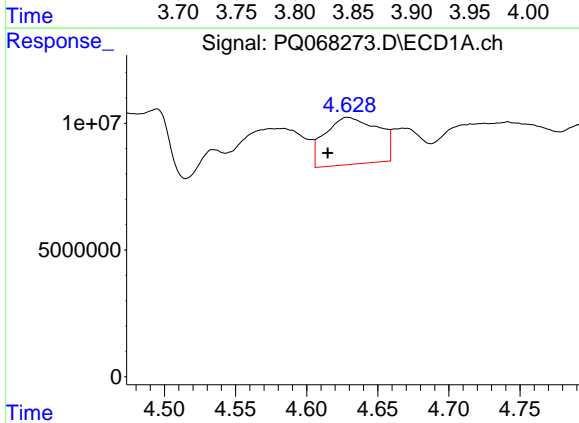
R.T.: 4.535 min
 Delta R.T.: -0.023 min
 Response: 11126470
 Conc: 35.56 ng/ml

Instrument :
 ECD_Q
 ClientSampleId :
 DCXZ8



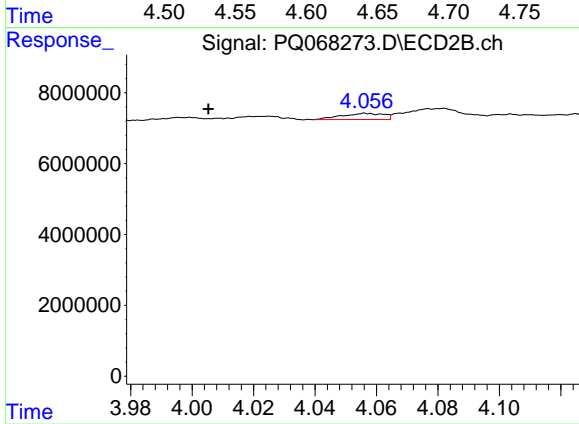
#17 AR-1242-2

R.T.: 3.861 min
 Delta R.T.: 0.017 min
 Response: 12073878
 Conc: 41.54 ng/ml



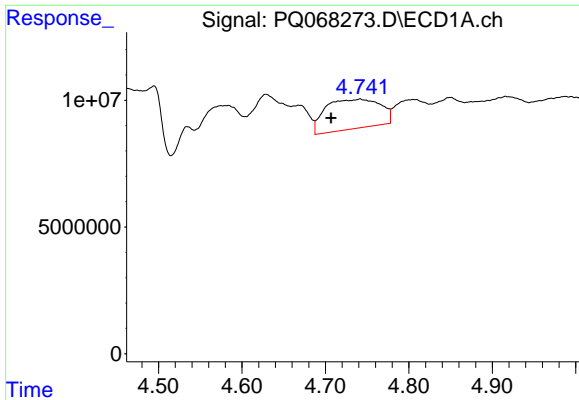
#18 AR-1242-3

R.T.: 4.629 min
 Delta R.T.: 0.014 min
 Response: 48168951
 Conc: 246.19 ng/ml



#18 AR-1242-3

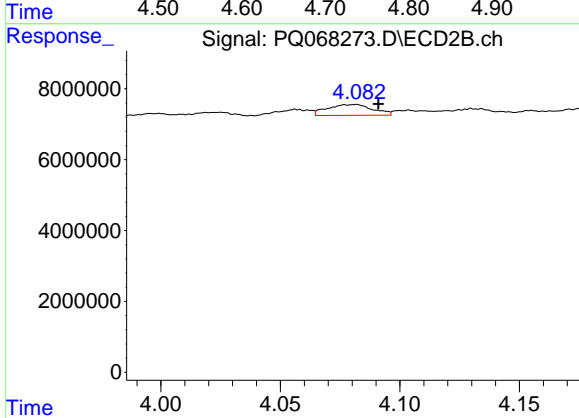
R.T.: 4.056 min
 Delta R.T.: 0.051 min
 Response: 1667590
 Conc: 10.77 ng/ml



#19 AR-1242-4

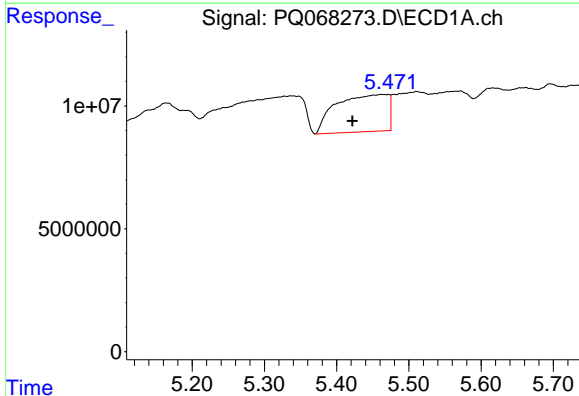
R.T.: 4.742 min
 Delta R.T.: 0.035 min
 Response: 53183988
 Conc: 329.06 ng/ml

Instrument :
 ECD_Q
 ClientSampleId :
 DCXZ8



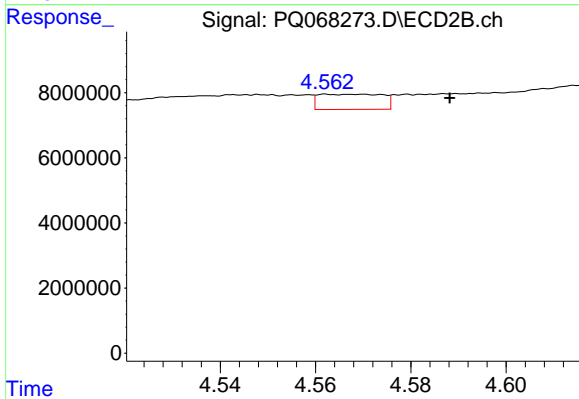
#19 AR-1242-4

R.T.: 4.082 min
 Delta R.T.: -0.009 min
 Response: 4026492
 Conc: 27.52 ng/ml



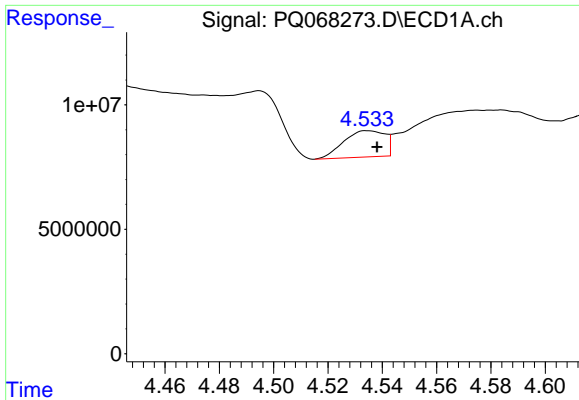
#20 AR-1242-5

R.T.: 5.464 min
 Delta R.T.: 0.042 min
 Response: 75509919
 Conc: 446.62 ng/ml



#20 AR-1242-5

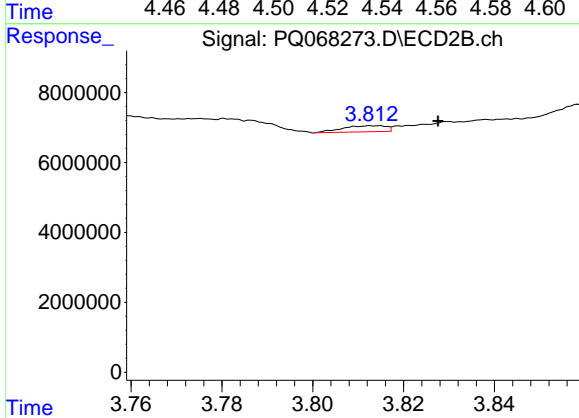
R.T.: 4.562 min
 Delta R.T.: -0.026 min
 Response: 4342940
 Conc: 22.47 ng/ml



#21 AR-1248-1

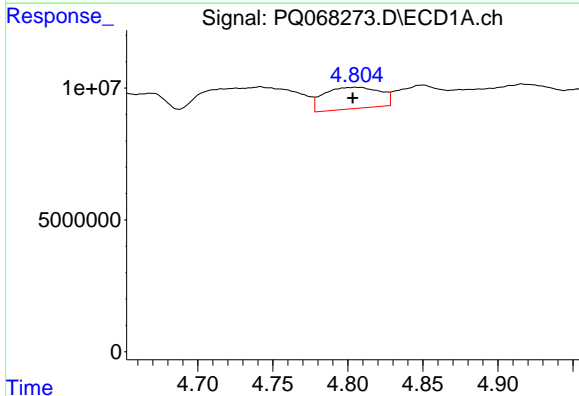
R.T.: 4.535 min
 Delta R.T.: -0.004 min
 Response: 11126470
 Conc: 72.27 ng/ml

Instrument :
 ECD_Q
 ClientSampleId :
 DCXZ8



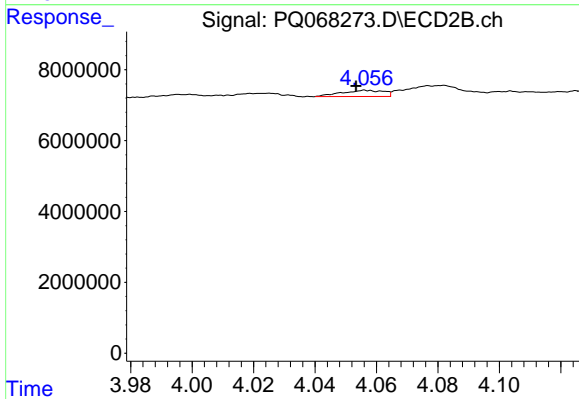
#21 AR-1248-1

R.T.: 3.814 min
 Delta R.T.: -0.014 min
 Response: 1136076
 Conc: 7.96 ng/ml



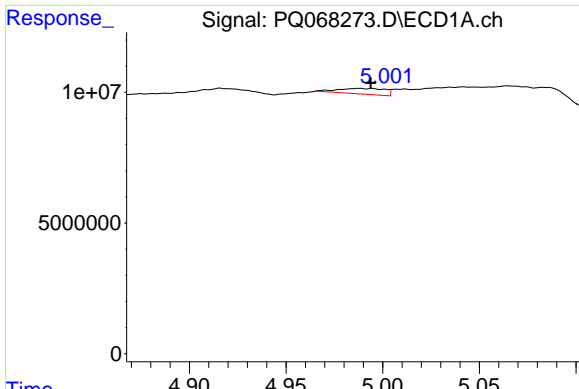
#22 AR-1248-2

R.T.: 4.805 min
 Delta R.T.: 0.002 min
 Response: 21154199
 Conc: 100.67 ng/ml



#22 AR-1248-2

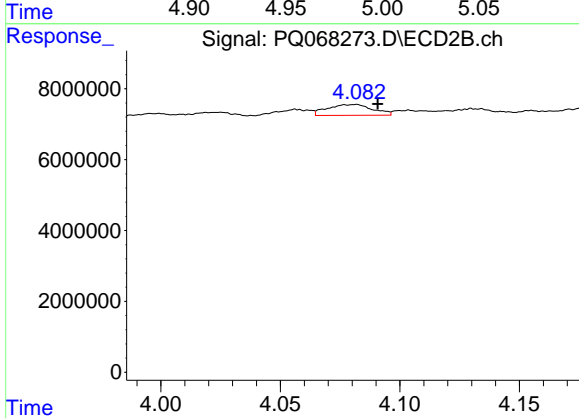
R.T.: 4.056 min
 Delta R.T.: 0.003 min
 Response: 1667590
 Conc: 7.54 ng/ml



#23 AR-1248-3

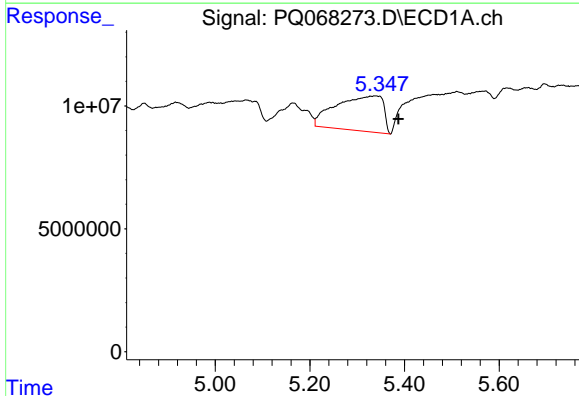
R.T.: 4.988 min
 Delta R.T.: -0.006 min
 Response: 3587136
 Conc: 14.22 ng/ml

Instrument :
 ECD_Q
 ClientSampleId :
 DCXZ8



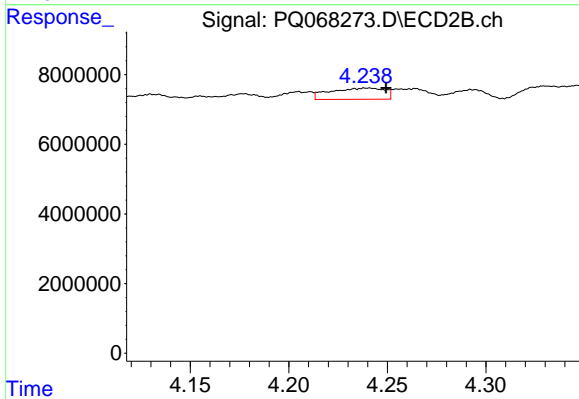
#23 AR-1248-3

R.T.: 4.082 min
 Delta R.T.: -0.009 min
 Response: 4026492
 Conc: 18.75 ng/ml



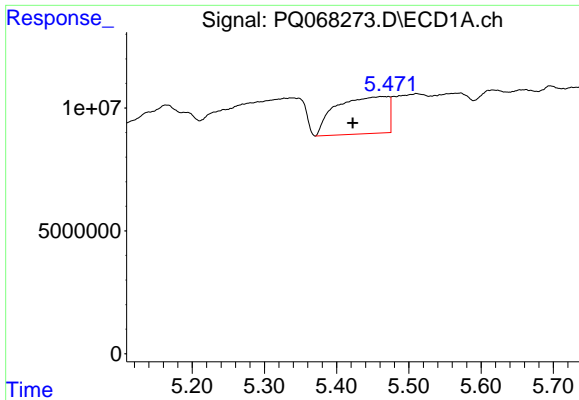
#24 AR-1248-4

R.T.: 5.337 min
 Delta R.T.: -0.050 min
 Response: 99738160
 Conc: 354.70 ng/ml



#24 AR-1248-4

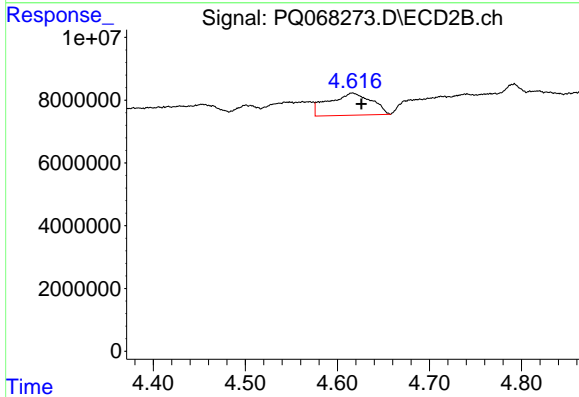
R.T.: 4.239 min
 Delta R.T.: -0.011 min
 Response: 6181492
 Conc: 23.41 ng/ml



#25 AR-1248-5

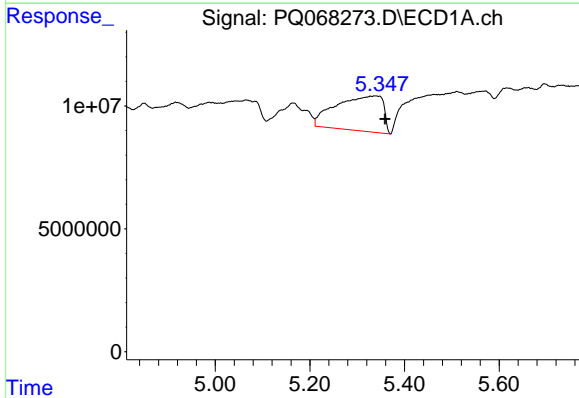
R.T.: 5.464 min
 Delta R.T.: 0.041 min
 Response: 75509919
 Conc: 267.50 ng/ml

Instrument :
 ECD_Q
 ClientSampleId :
 DCXZ8



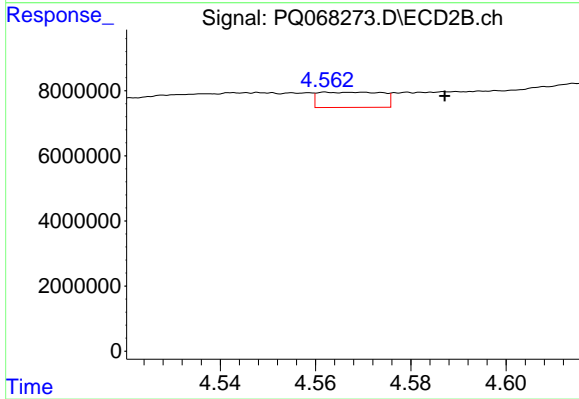
#25 AR-1248-5

R.T.: 4.617 min
 Delta R.T.: -0.009 min
 Response: 23037182
 Conc: 87.08 ng/ml



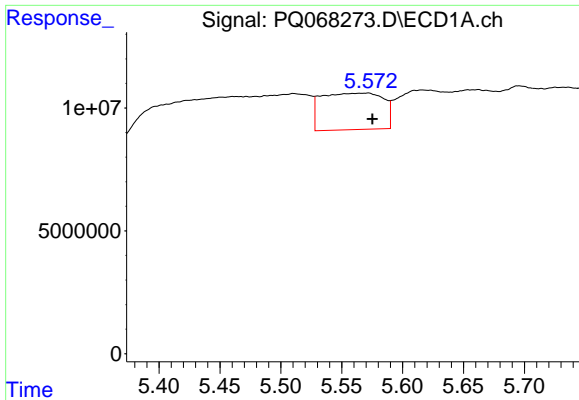
#26 AR-1254-1

R.T.: 5.337 min
 Delta R.T.: -0.022 min
 Response: 99738160
 Conc: 360.52 ng/ml



#26 AR-1254-1

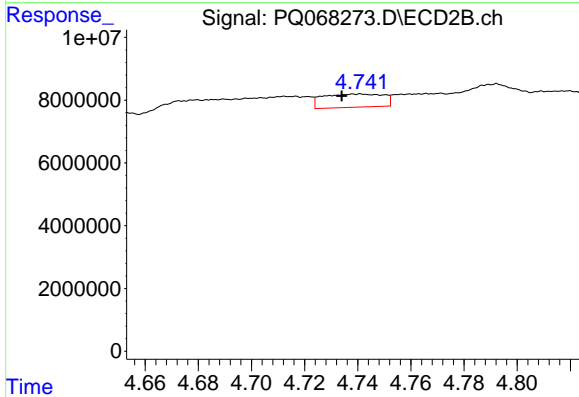
R.T.: 4.562 min
 Delta R.T.: -0.025 min
 Response: 4342940
 Conc: 11.05 ng/ml



#27 AR-1254-2

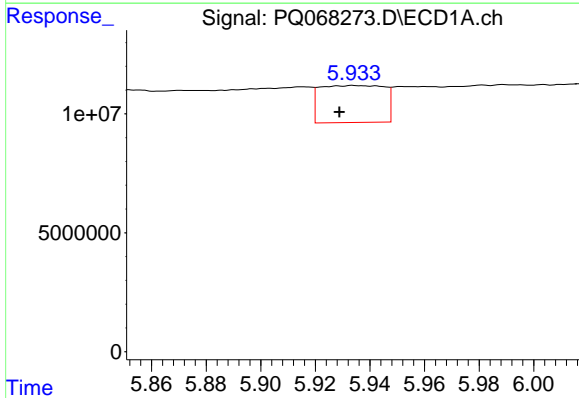
R.T.: 5.572 min
 Delta R.T.: -0.004 min
 Response: 52417361
 Conc: 122.75 ng/ml

Instrument :
 ECD_Q
 ClientSampleId :
 DCXZ8



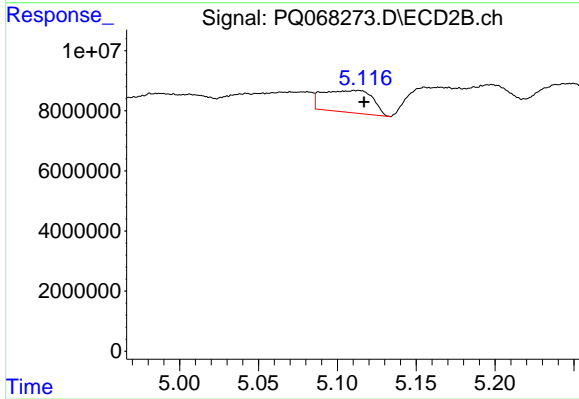
#27 AR-1254-2

R.T.: 4.741 min
 Delta R.T.: 0.007 min
 Response: 6652545
 Conc: 19.39 ng/ml



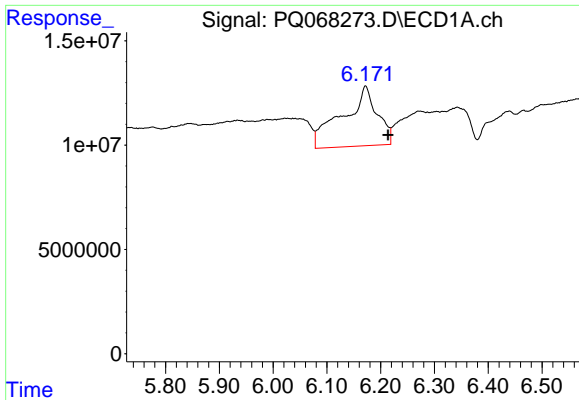
#28 AR-1254-3

R.T.: 5.934 min
 Delta R.T.: 0.005 min
 Response: 25402301
 Conc: 56.56 ng/ml



#28 AR-1254-3

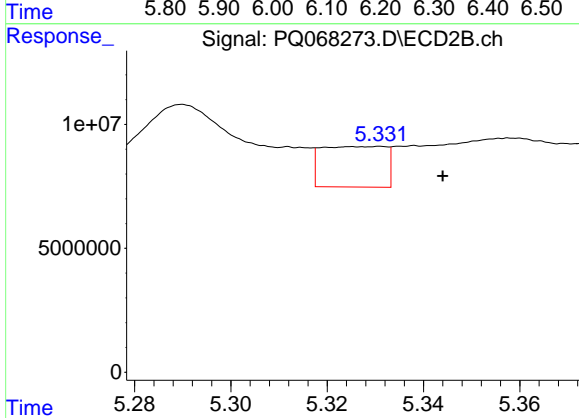
R.T.: 5.111 min
 Delta R.T.: -0.006 min
 Response: 16104703
 Conc: 29.75 ng/ml



#29 AR-1254-4

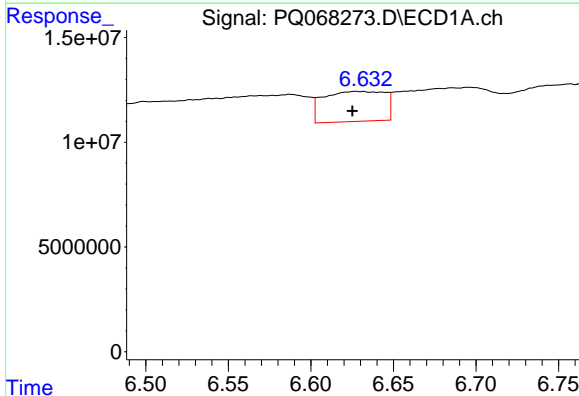
R.T.: 6.172 min
 Delta R.T.: -0.042 min
 Response: 128614274
 Conc: 402.29 ng/ml

Instrument :
 ECD_Q
 ClientSampleId :
 DCXZ8



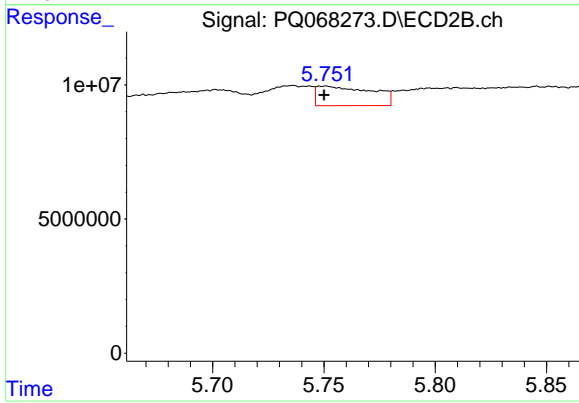
#29 AR-1254-4

R.T.: 5.331 min
 Delta R.T.: -0.013 min
 Response: 15248492
 Conc: 45.21 ng/ml



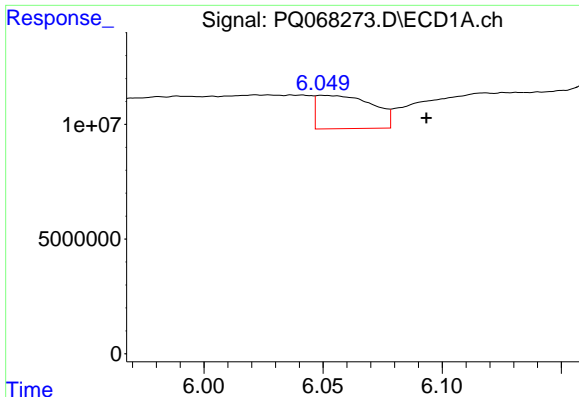
#30 AR-1254-5

R.T.: 6.627 min
 Delta R.T.: 0.002 min
 Response: 36978752
 Conc: 106.65 ng/ml



#30 AR-1254-5

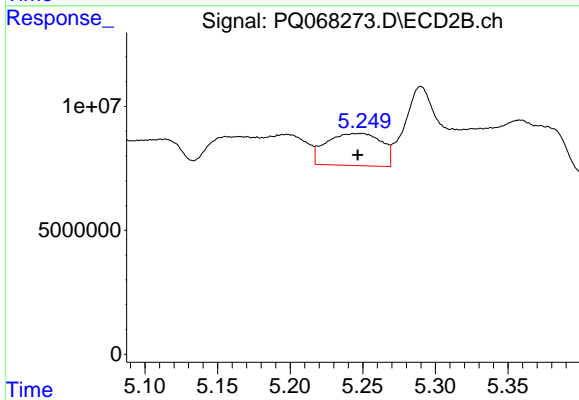
R.T.: 5.751 min
 Delta R.T.: 0.000 min
 Response: 12567957
 Conc: 25.79 ng/ml



#31 AR-1260-1

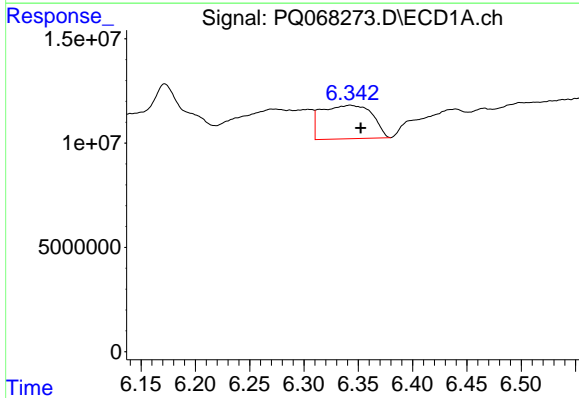
R.T.: 6.050 min
 Delta R.T.: -0.043 min
 Response: 23769241
 Conc: 72.03 ng/ml

Instrument :
 ECD_Q
 ClientSampleId :
 DCXZ8



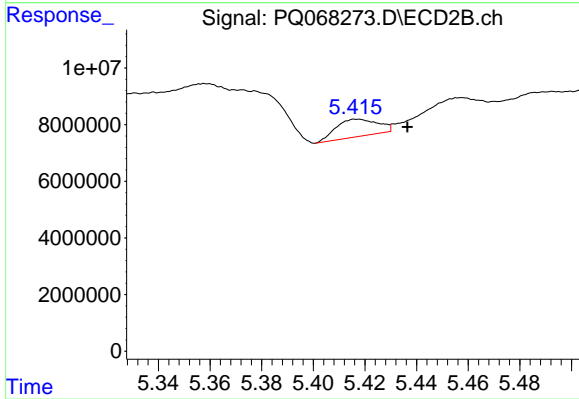
#31 AR-1260-1

R.T.: 5.250 min
 Delta R.T.: 0.003 min
 Response: 34133115
 Conc: 93.85 ng/ml



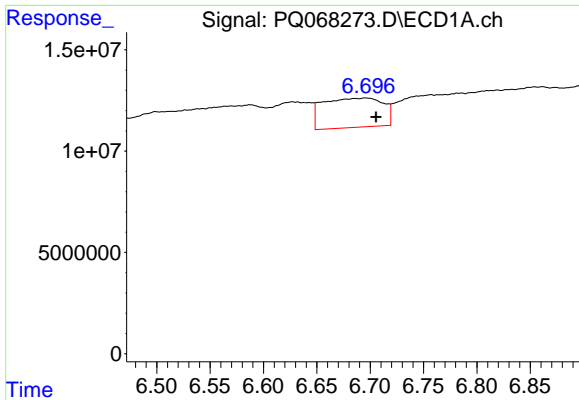
#32 AR-1260-2

R.T.: 6.342 min
 Delta R.T.: -0.010 min
 Response: 52133084
 Conc: 138.35 ng/ml



#32 AR-1260-2

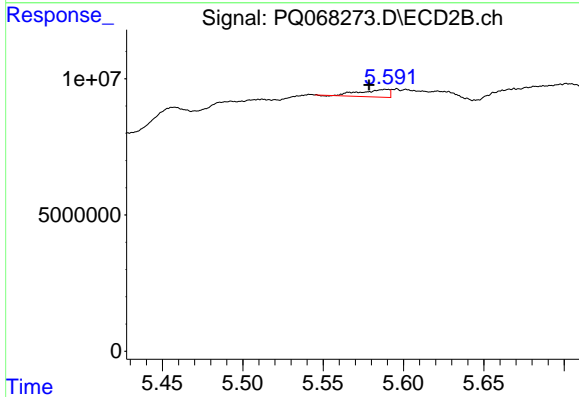
R.T.: 5.416 min
 Delta R.T.: -0.020 min
 Response: 6895188
 Conc: 15.71 ng/ml



#33 AR-1260-3

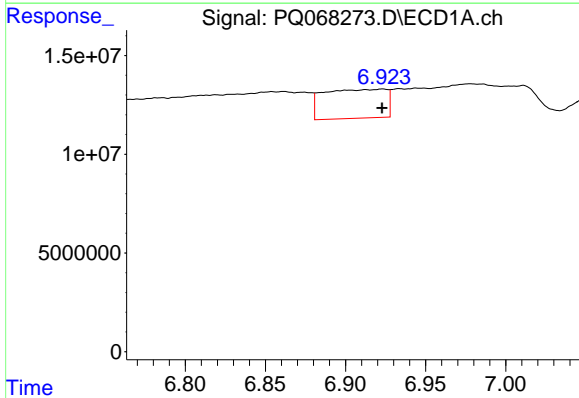
R.T.: 6.696 min
 Delta R.T.: -0.010 min
 Response: 56790367
 Conc: 205.37 ng/ml

Instrument :
 ECD_Q
 ClientSampleId :
 DCXZ8



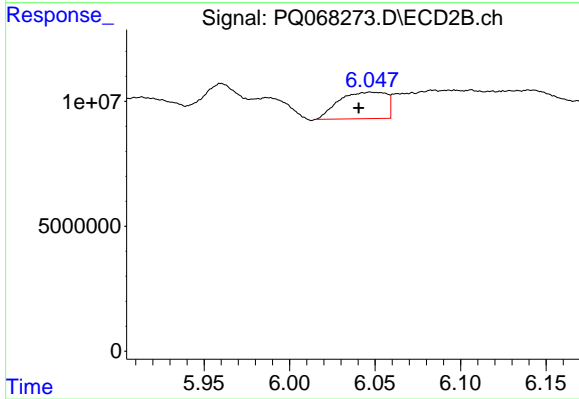
#33 AR-1260-3

R.T.: 5.589 min
 Delta R.T.: 0.010 min
 Response: 3428995
 Conc: 7.96 ng/ml



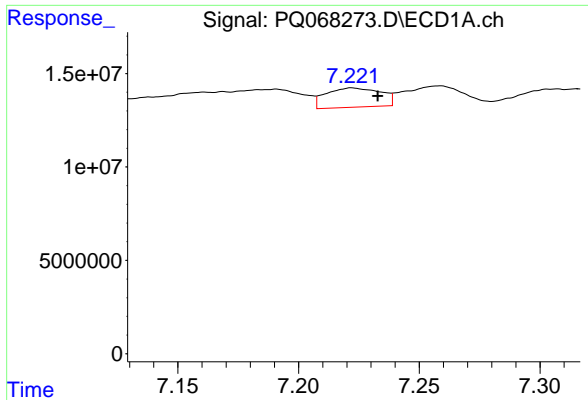
#34 AR-1260-4

R.T.: 6.923 min
 Delta R.T.: 0.000 min
 Response: 39856191
 Conc: 130.54 ng/ml



#34 AR-1260-4

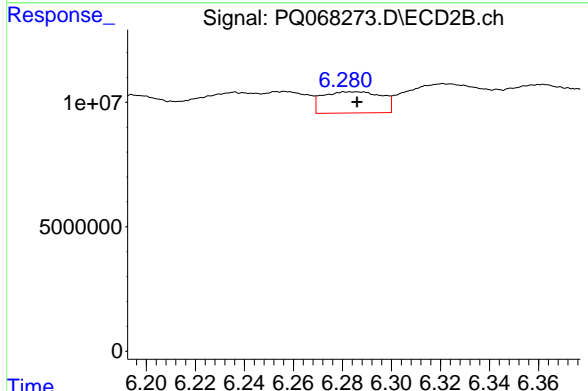
R.T.: 6.048 min
 Delta R.T.: 0.007 min
 Response: 20491594
 Conc: 60.34 ng/ml



#35 AR-1260-5

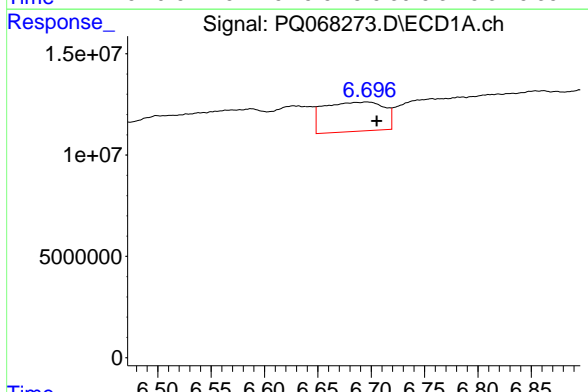
R.T.: 7.222 min
 Delta R.T.: -0.011 min
 Response: 16272450
 Conc: 27.88 ng/ml

Instrument :
 ECD_Q
 ClientSampleId :
 DCXZ8



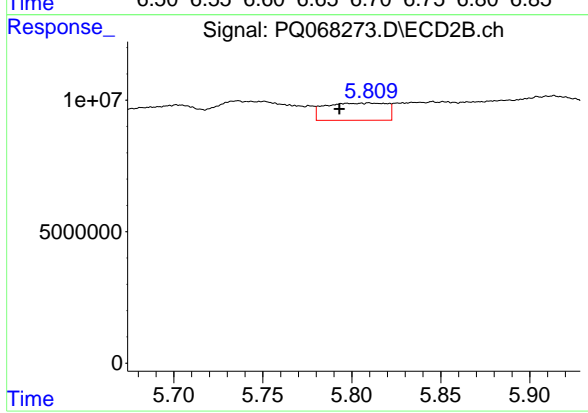
#35 AR-1260-5

R.T.: 6.283 min
 Delta R.T.: -0.003 min
 Response: 14257973
 Conc: 17.97 ng/ml



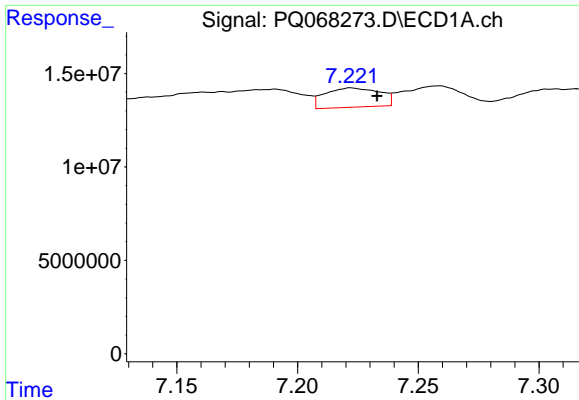
#36 AR-1262-1

R.T.: 6.696 min
 Delta R.T.: -0.010 min
 Response: 56790367
 Conc: 134.40 ng/ml



#36 AR-1262-1

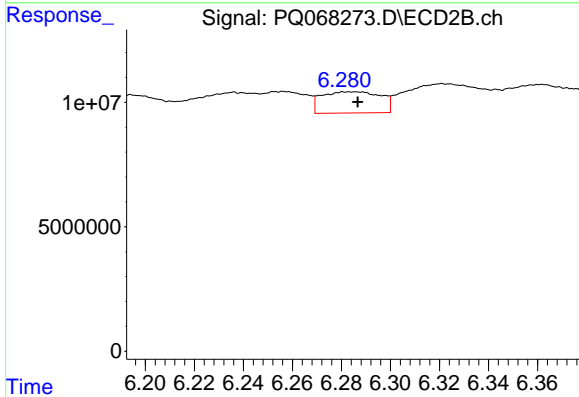
R.T.: 5.810 min
 Delta R.T.: 0.017 min
 Response: 15748903
 Conc: 30.61 ng/ml



#37 AR-1262-2

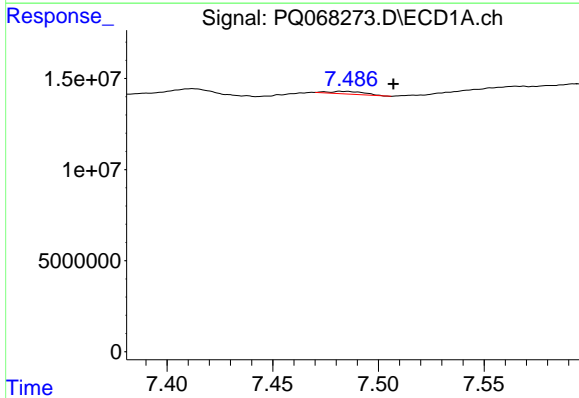
R.T.: 7.222 min
 Delta R.T.: -0.011 min
 Response: 16272450
 Conc: 23.83 ng/ml

Instrument :
 ECD_Q
 ClientSampleId :
 DCXZ8



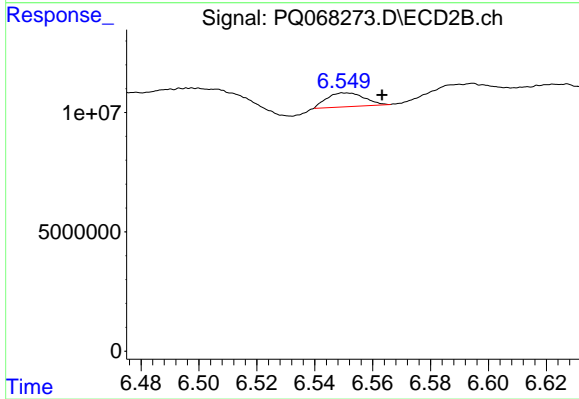
#37 AR-1262-2

R.T.: 6.283 min
 Delta R.T.: -0.003 min
 Response: 14257973
 Conc: 15.83 ng/ml



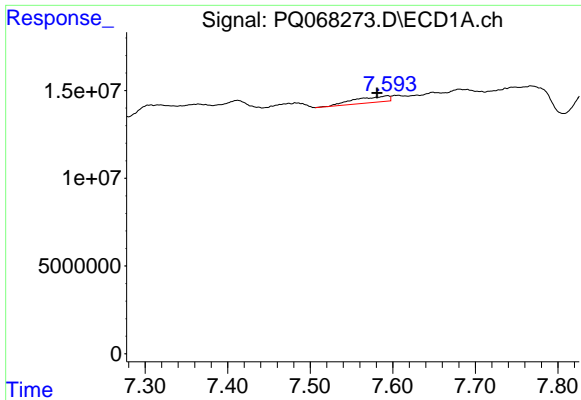
#38 AR-1262-3

R.T.: 7.483 min
 Delta R.T.: -0.025 min
 Response: 1713220
 Conc: 3.87 ng/ml



#38 AR-1262-3

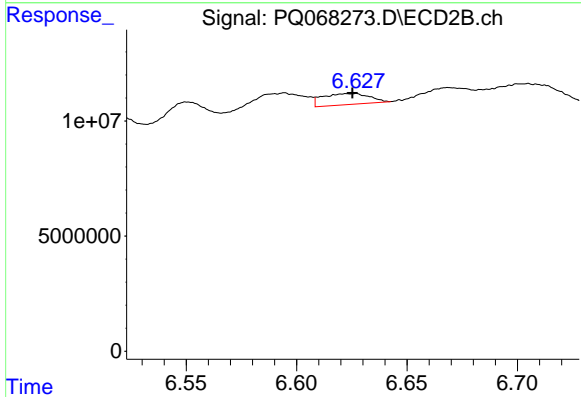
R.T.: 6.551 min
 Delta R.T.: -0.012 min
 Response: 5213238
 Conc: 15.18 ng/ml



#39 AR-1262-4

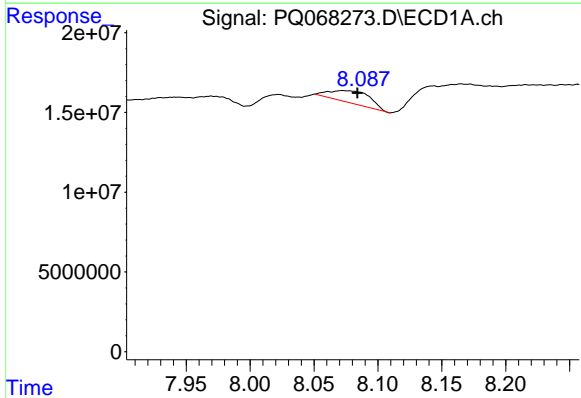
R.T.: 7.593 min
 Delta R.T.: 0.012 min
 Response: 9926156
 Conc: 28.97 ng/ml

Instrument :
 ECD_Q
 ClientSampleId :
 DCXZ8



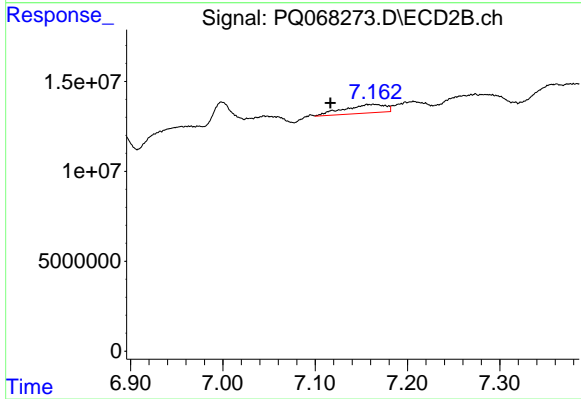
#39 AR-1262-4

R.T.: 6.626 min
 Delta R.T.: 0.000 min
 Response: 7058808
 Conc: 10.67 ng/ml



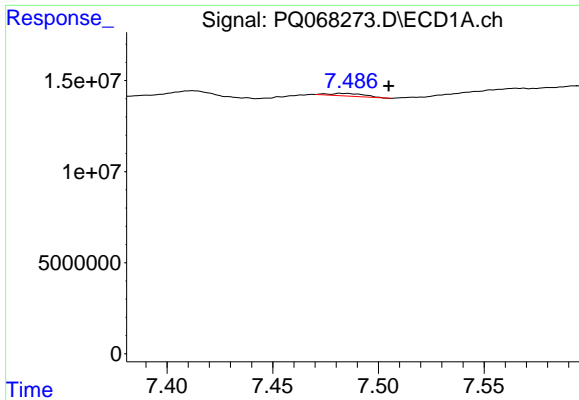
#40 AR-1262-5

R.T.: 8.072 min
 Delta R.T.: -0.012 min
 Response: 16697569
 Conc: 79.50 ng/ml



#40 AR-1262-5

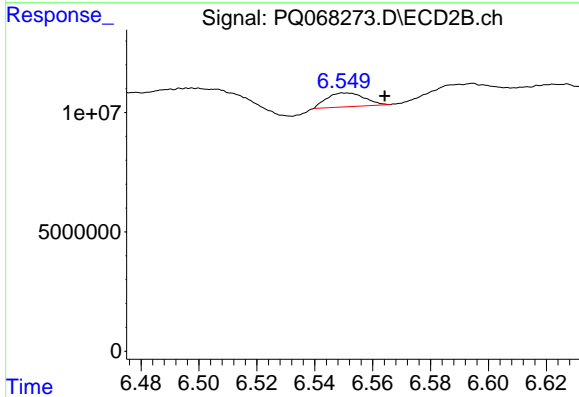
R.T.: 7.163 min
 Delta R.T.: 0.047 min
 Response: 14905170
 Conc: 47.69 ng/ml



#41 AR-1268-1

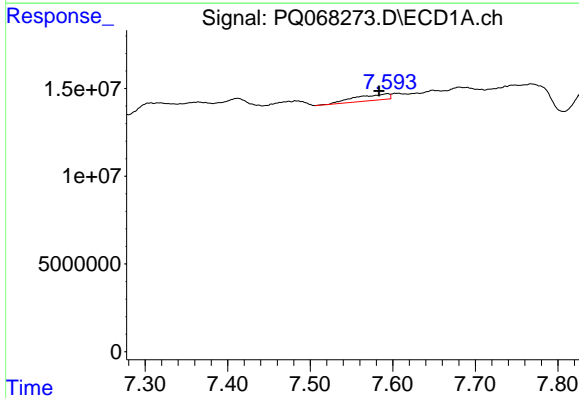
R.T.: 7.483 min
 Delta R.T.: -0.022 min
 Response: 1713220
 Conc: 2.23 ng/ml

Instrument :
 ECD_Q
 ClientSampleId :
 DCXZ8



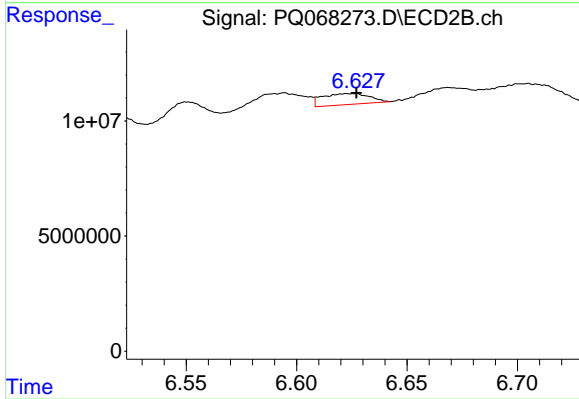
#41 AR-1268-1

R.T.: 6.551 min
 Delta R.T.: -0.013 min
 Response: 5213238
 Conc: 5.23 ng/ml



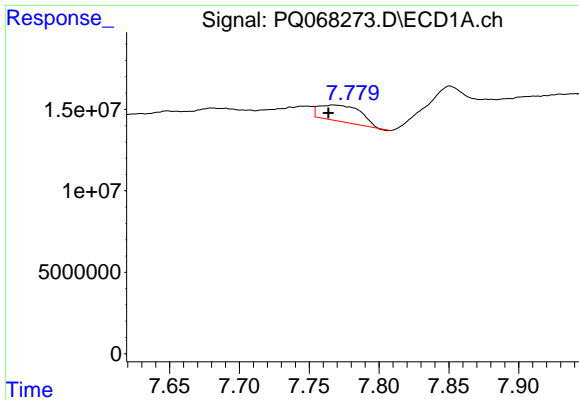
#42 AR-1268-2

R.T.: 7.593 min
 Delta R.T.: 0.010 min
 Response: 9926156
 Conc: 13.83 ng/ml



#42 AR-1268-2

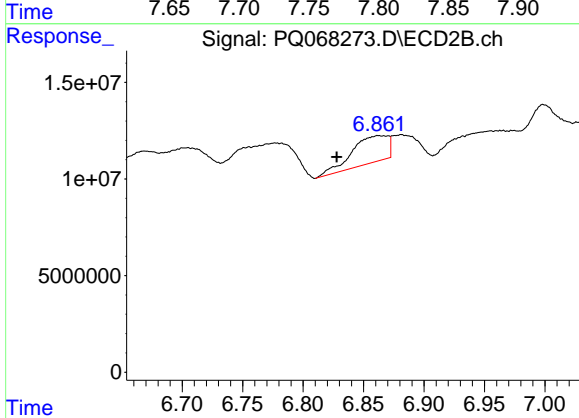
R.T.: 6.626 min
 Delta R.T.: 0.000 min
 Response: 7058808
 Conc: 7.57 ng/ml



#43 AR-1268-3

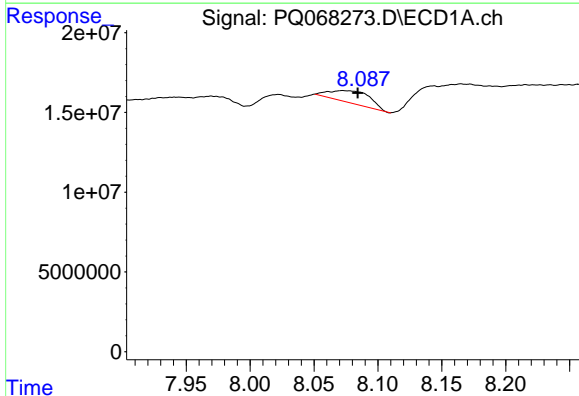
R.T.: 7.767 min
 Delta R.T.: 0.004 min
 Response: 20511319
 Conc: 35.50 ng/ml

Instrument :
 ECD_Q
 ClientSampleId :
 DCXZ8



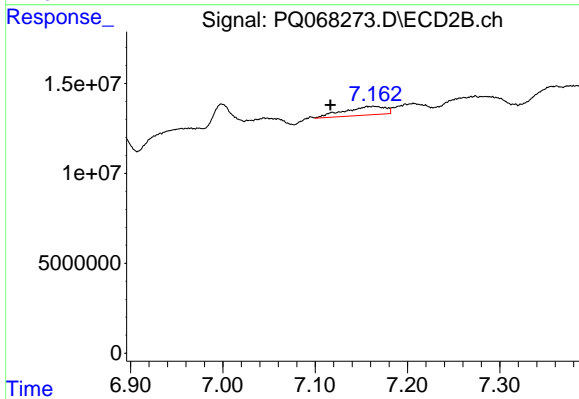
#43 AR-1268-3

R.T.: 6.862 min
 Delta R.T.: 0.034 min
 Response: 29055343
 Conc: 35.61 ng/ml



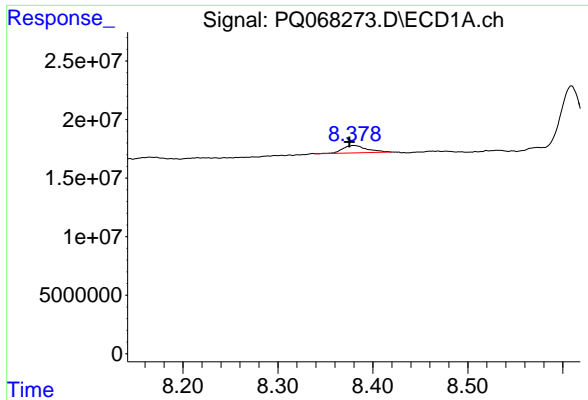
#44 AR-1268-4

R.T.: 8.072 min
 Delta R.T.: -0.012 min
 Response: 16697569
 Conc: 72.46 ng/ml



#44 AR-1268-4

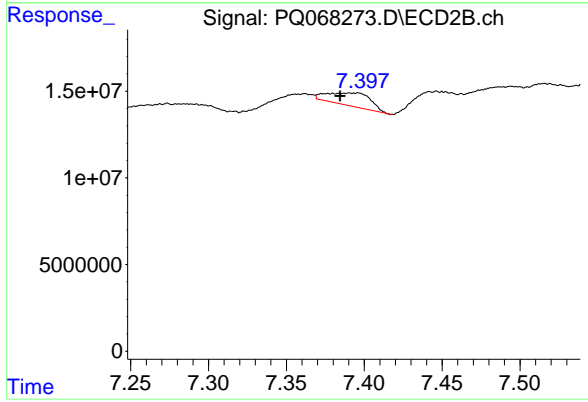
R.T.: 7.163 min
 Delta R.T.: 0.047 min
 Response: 14905170
 Conc: 42.45 ng/ml



#45 AR-1268-5

R.T.: 8.380 min
 Delta R.T.: 0.004 min
 Response: 11085169
 Conc: 6.82 ng/ml

Instrument :
 ECD_Q
 ClientSampleId :
 DCXZ8



#45 AR-1268-5

R.T.: 7.396 min
 Delta R.T.: 0.011 min
 Response: 14517639
 Conc: 6.01 ng/ml