

Data Path : Z:\pestpcbsrv\HPCHEM1\ECD\_Q\Data\PQ082824\  
 Data File : PQ068297.D  
 Signal(s) : Signal #1: ECD1A.ch Signal #2: ECD2B.ch  
 Acq On : 28 Aug 2024 12:57  
 Operator : YP\AJ  
 Sample : P3675-05  
 Misc :  
 ALS Vial : 21 Sample Multiplier: 1

Instrument :  
 ECD\_Q  
 ClientSampleId :  
 DCYC2

Integration File signal 1: autoint1.e  
 Integration File signal 2: autoint2.e  
 Quant Time: Aug 29 01:47:38 2024  
 Quant Method : Z:\pestpcbsrv\HPCHEM1\ECD\_Q\Method\PQ082724CLP.M  
 Quant Title : GC EXTRACTABLES  
 QLast Update : Wed Aug 28 02:08:25 2024  
 Response via : Initial Calibration  
 Integrator: ChemStation

Volume Inj. : 1 µl  
 Signal #1 Phase : ZB MR1 Signal #2 Phase: ZB MR2  
 Signal #1 Info : 30Mx0.32mmx 0.5µm Signal #2 Info : 30M x 0.32mm x 0.25µm

Compound	RT#1	RT#2	Resp#1	Resp#2	ng/ml	ng/ml
-----						
System Monitoring Compounds						
1) SA Tetrachlo...	3.437	2.821	129.3E6	121.8E6	16.368	17.203
2) SA Decachlor...	8.609	7.599	59143103	92775979	26.003	27.432
Target Compounds						
3) L1 AR-1016-1	4.563	0.000	8570416	0	37.920	N.D. #
4) L1 AR-1016-2	4.563	0.000	8570416	0	24.350	N.D. #
5) L1 AR-1016-3	4.593	0.000	6386502	0	29.344	N.D. #
6) L1 AR-1016-4	4.717	0.000	9601544	0	53.084	N.D. #
7) L1 AR-1016-5	4.924f	4.239	581769	3350938	3.347	18.196 #
8) L2 AR-1221-1	3.624	3.091f	572857	1476551	6.239	17.281 #
9) L2 AR-1221-2	3.715	3.091	2166696	1476551	33.939	24.771 #
12) L3 AR-1232-2	4.283	0.000	10793371	0	118.834	N.D. #
13) L3 AR-1232-3	4.563	0.000	8570416	0	50.678	N.D. #
14) L3 AR-1232-4	4.717	4.125	9601544	1186323	111.128	16.984 #
15) L3 AR-1232-5	4.809	4.239	1312242	3350938	23.237	42.631 #
16) L4 AR-1242-1	4.563	0.000	8570416	0	41.929	N.D. #
17) L4 AR-1242-2	4.563	0.000	8570416	0	27.390	N.D. #
18) L4 AR-1242-3	4.593	0.000	6386502	0	32.642	N.D. #
19) L4 AR-1242-4	4.717	4.125	9601544	1186323	59.407	8.108 #
20) L4 AR-1242-5	5.462f	4.607	7895902	2096841	46.702	10.847 #
21) L5 AR-1248-1	4.563	0.000	8570416	0	55.667	N.D. #
22) L5 AR-1248-2	4.809	0.000	1312242	0	6.245	N.D. #
23) L5 AR-1248-3	4.924f	4.125	581769	1186323	2.306	5.524 #
24) L5 AR-1248-4	5.351f	4.239	4884838	3350938	17.372	12.688 #
25) L5 AR-1248-5	5.462f	4.607	7895902	2096841	27.972	7.926 #
26) L6 AR-1254-1	5.351	4.607	4884838	2096841	17.657	5.337 #
27) L6 AR-1254-2	5.569	4.738	4670089	1813315	10.936	5.284 #
28) L6 AR-1254-3	5.930	5.057f	4993982	1536322	11.119	2.838 #
29) L6 AR-1254-4	6.208	5.356	1001948	2453930	3.134	7.275 #
30) L6 AR-1254-5	6.565f	5.733	2504197	4062908	7.223	8.339
31) L7 AR-1260-1	6.088	5.247	1368758	2281348	4.148	6.273 #
32) L7 AR-1260-2	6.351	5.450	481927	1785336	1.279	4.068 #
33) L7 AR-1260-3	6.695	5.585	3759512	1997651	13.596	4.635 #
34) L7 AR-1260-4	6.978f	6.081f	4318223	1550639	14.143	4.566 #
35) L7 AR-1260-5	7.260	6.289	2542765	623200	4.357	0.785 #
36) L8 AR-1262-1	6.695	5.733f	3759512	4062908	8.897	7.896
37) L8 AR-1262-2	7.260	6.289	2542765	623200	3.723	0.692 #
38) L8 AR-1262-3	0.000	6.554	0	2651572	N.D.	7.720 #
41) L9 AR-1268-1	0.000	6.554	0	2651572	N.D.	2.662 #
43) L9 AR-1268-3	0.000	6.823	0	1133914	N.D.	1.390 #
45) L9 AR-1268-5	0.000	7.392	0	3436885	N.D.	1.422 #

Data Path : Z:\pestpcbsrv\HPCHEM1\ECD\_Q\Data\PQ082824\  
Data File : PQ068297.D  
Signal(s) : Signal #1: ECD1A.ch Signal #2: ECD2B.ch  
Acq On : 28 Aug 2024 12:57  
Operator : YP\AJ  
Sample : P3675-05  
Misc :  
ALS Vial : 21 Sample Multiplier: 1

Instrument :  
ECD\_Q  
ClientSampleId :  
DCYC2

Integration File signal 1: autoint1.e  
Integration File signal 2: autoint2.e  
Quant Time: Aug 29 01:47:38 2024  
Quant Method : Z:\pestpcbsrv\HPCHEM1\ECD\_Q\Method\PQ082724CLP.M  
Quant Title : GC EXTRACTABLES  
QLast Update : Wed Aug 28 02:08:25 2024  
Response via : Initial Calibration  
Integrator: ChemStation

Volume Inj. : 1 µl  
Signal #1 Phase : ZB MR1 Signal #2 Phase: ZB MR2  
Signal #1 Info : 30Mx0.32mmx 0.5µm Signal #2 Info : 30M x 0.32mm x 0.25µm

Compound	RT#1	RT#2	Resp#1	Resp#2	ng/ml	ng/ml
----------	------	------	--------	--------	-------	-------

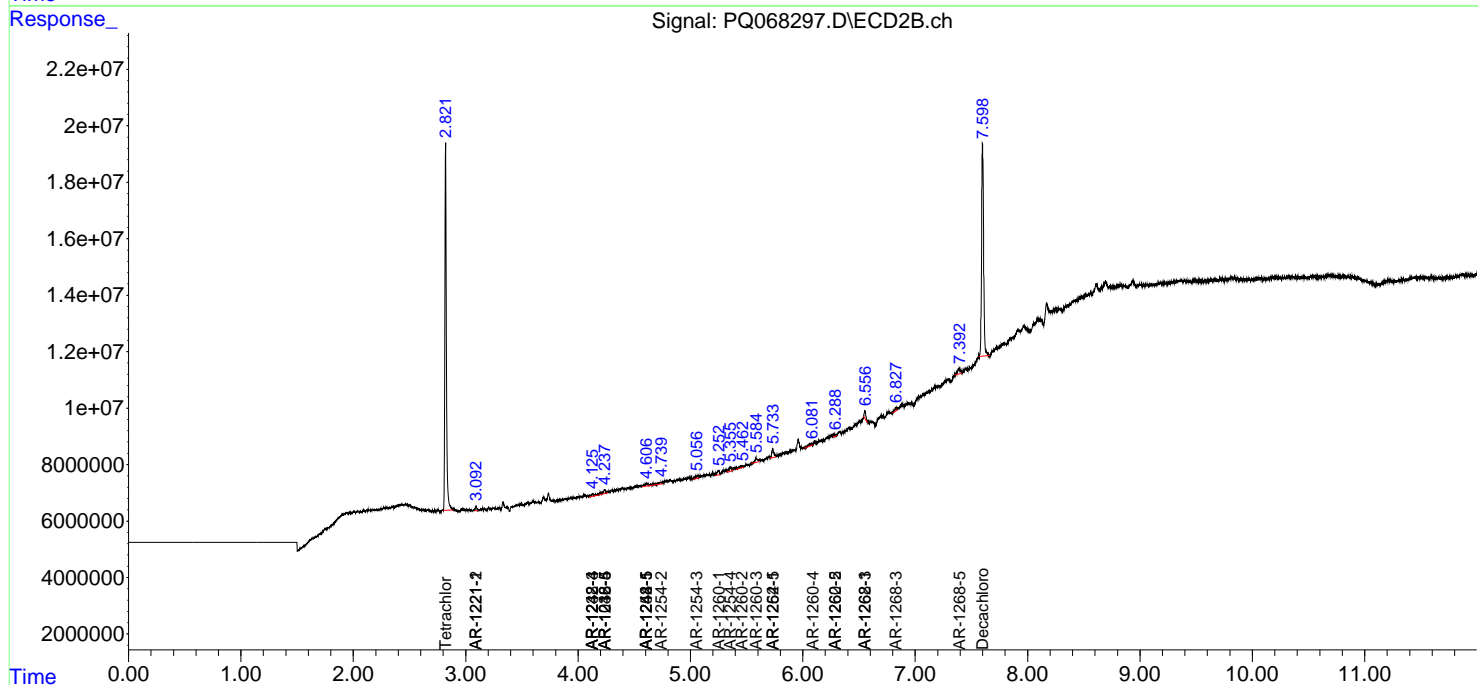
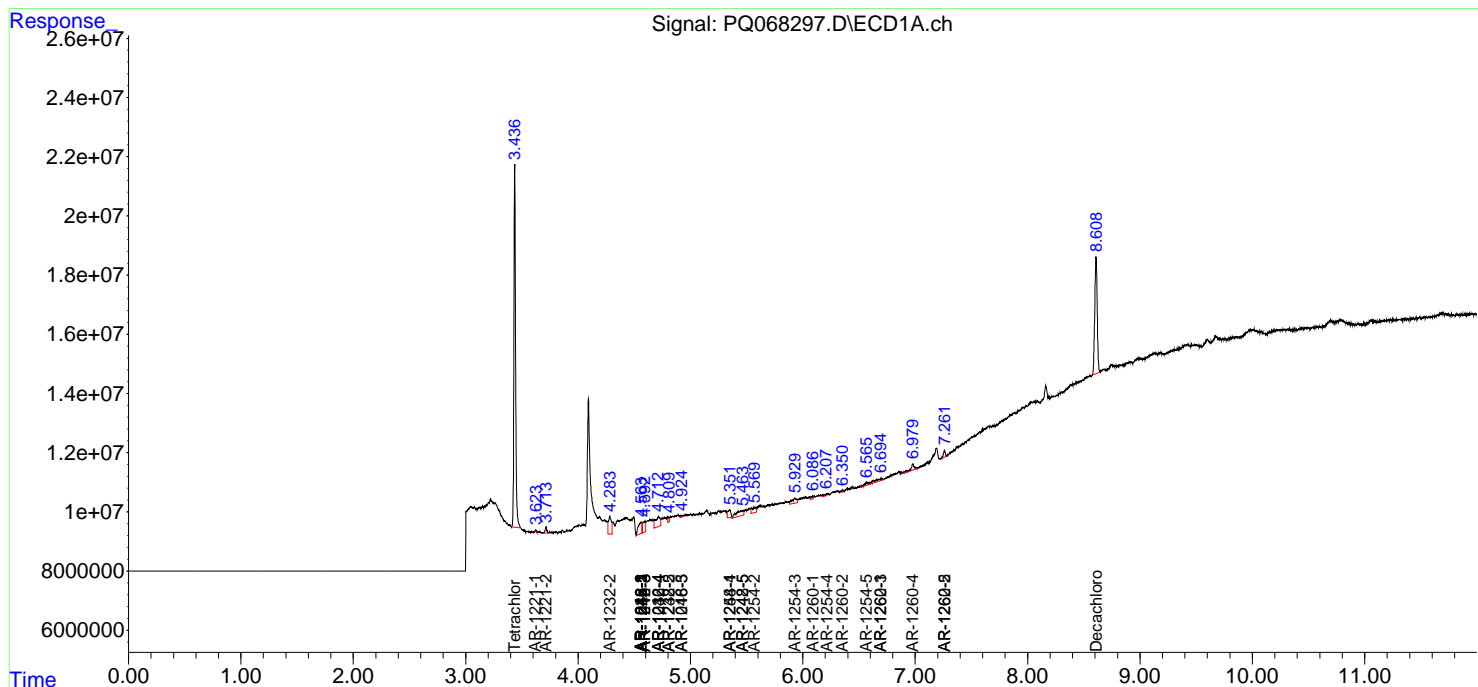
-----  
(f)=RT Delta > 1/2 Window (#)=Amounts differ by > 25% (m)=manual int.

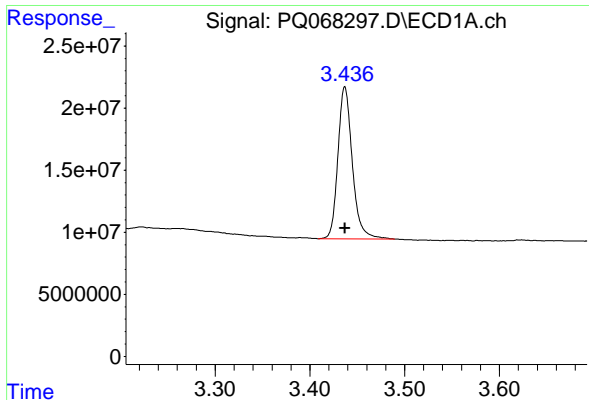
Data Path : Z:\pestpcbsrv\HPCHEM1\ECD\_Q\Data\PQ082824\  
 Data File : PQ068297.D  
 Signal(s) : Signal #1: ECD1A.ch Signal #2: ECD2B.ch  
 Acq On : 28 Aug 2024 12:57  
 Operator : YP\AJ  
 Sample : P3675-05  
 Misc :  
 ALS Vial : 21 Sample Multiplier: 1

Instrument :  
 ECD\_Q  
 ClientSampleId :  
 DCYC2

Integration File signal 1: autoint1.e  
 Integration File signal 2: autoint2.e  
 Quant Time: Aug 29 01:47:38 2024  
 Quant Method : Z:\pestpcbsrv\HPCHEM1\ECD\_Q\Method\PQ082724CLP.M  
 Quant Title : GC EXTRACTABLES  
 QLast Update : Wed Aug 28 02:08:25 2024  
 Response via : Initial Calibration  
 Integrator: ChemStation

Volume Inj. : 1 µl  
 Signal #1 Phase : ZB MR1 Signal #2 Phase: ZB MR2  
 Signal #1 Info : 30Mx0.32mmx 0.5µm Signal #2 Info : 30M x 0.32mm x 0.25µm

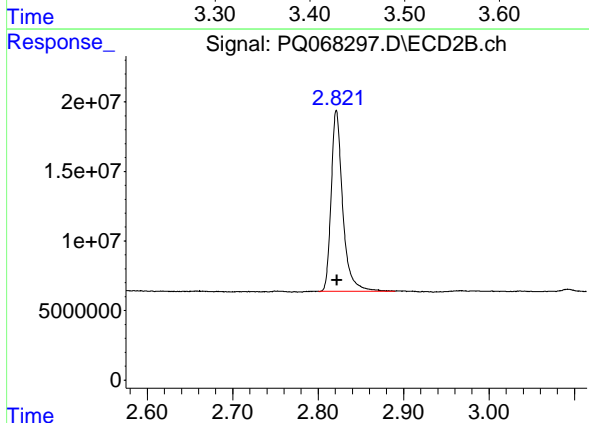




#1 Tetrachloro-m-xylene

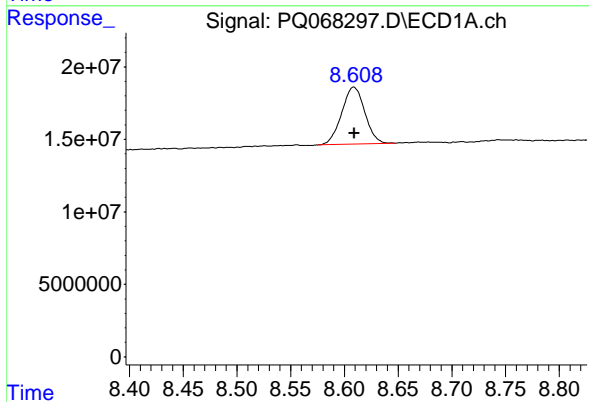
R.T.: 3.437 min  
 Delta R.T.: 0.000 min  
 Response: 129314933  
 Conc: 16.37 ng/ml

Instrument :  
 ECD\_Q  
 ClientSampleId :  
 DCYC2



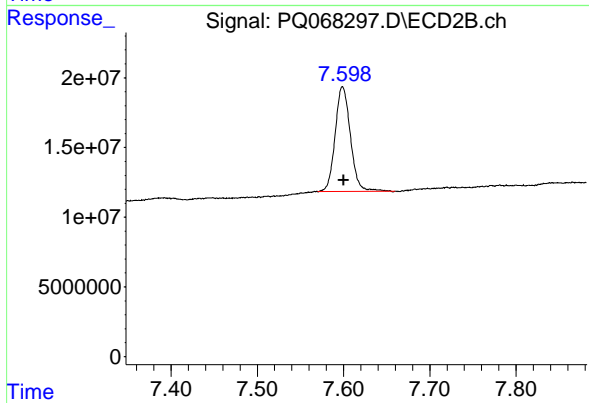
#1 Tetrachloro-m-xylene

R.T.: 2.821 min  
 Delta R.T.: 0.000 min  
 Response: 121840260  
 Conc: 17.20 ng/ml



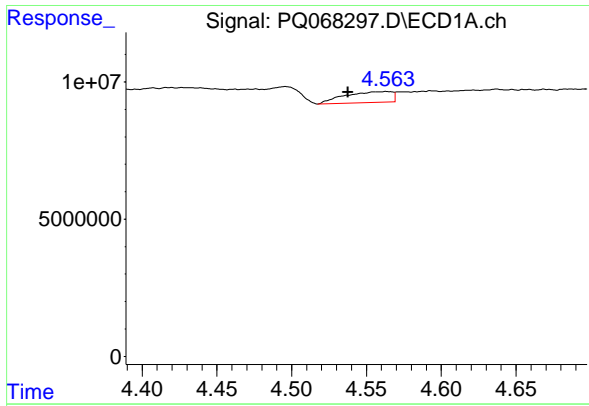
#2 Decachlorobiphenyl

R.T.: 8.609 min  
 Delta R.T.: 0.000 min  
 Response: 59143103  
 Conc: 26.00 ng/ml



#2 Decachlorobiphenyl

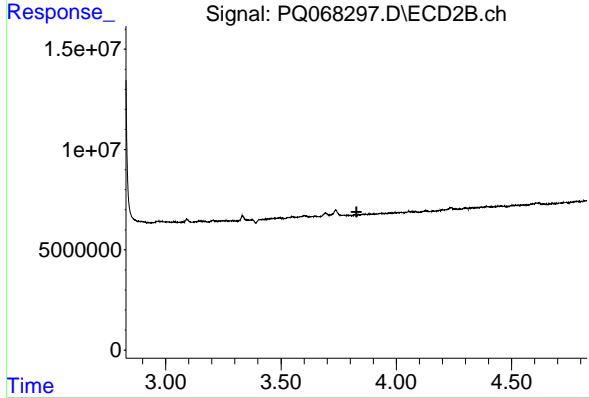
R.T.: 7.599 min  
 Delta R.T.: -0.001 min  
 Response: 92775979  
 Conc: 27.43 ng/ml



#3 AR-1016-1

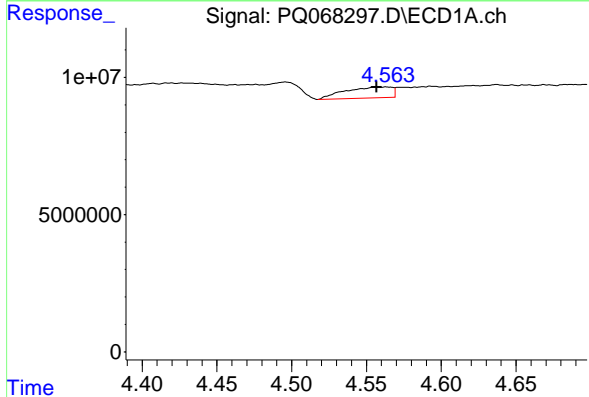
R.T.: 4.563 min  
 Delta R.T.: 0.026 min  
 Response: 8570416  
 Conc: 37.92 ng/ml

Instrument :  
 ECD\_Q  
 ClientSampleId :  
 DCYC2



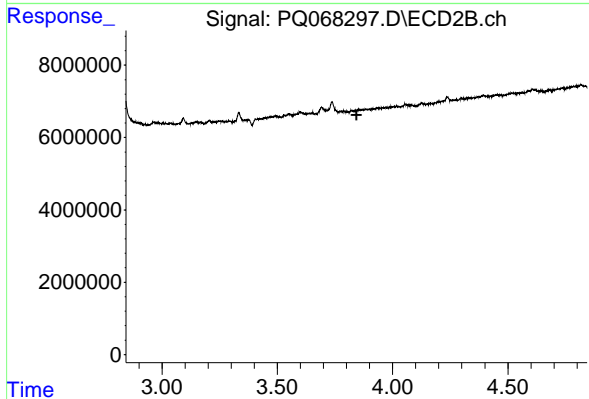
#3 AR-1016-1

R.T.: 0.000 min  
 Exp R.T. : 3.828 min  
 Response: 0  
 Conc: N.D.



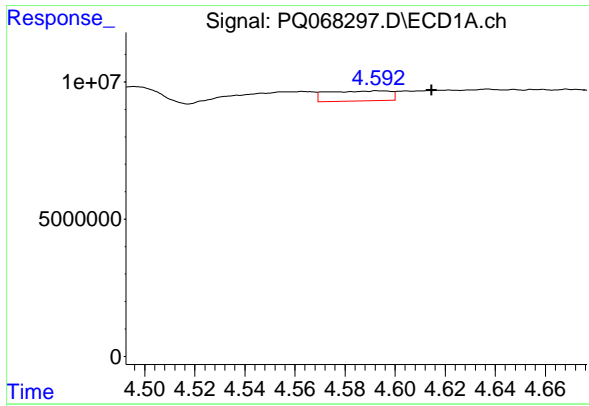
#4 AR-1016-2

R.T.: 4.563 min  
 Delta R.T.: 0.006 min  
 Response: 8570416  
 Conc: 24.35 ng/ml



#4 AR-1016-2

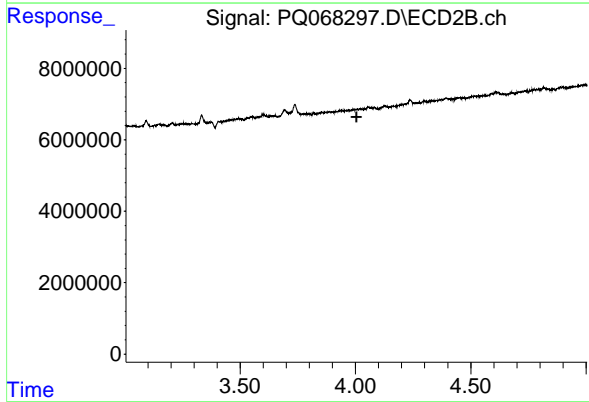
R.T.: 0.000 min  
 Exp R.T. : 3.844 min  
 Response: 0  
 Conc: N.D.



#5 AR-1016-3

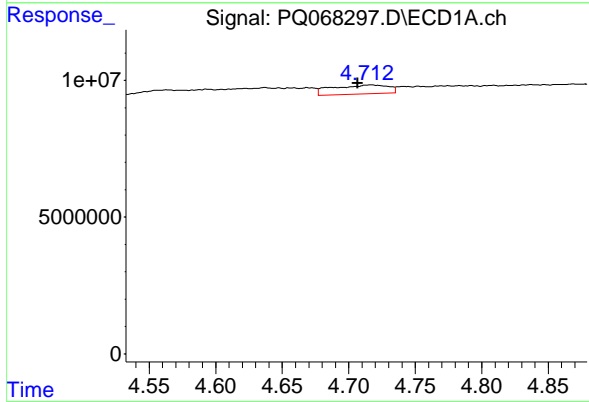
R.T.: 4.593 min  
 Delta R.T.: -0.021 min  
 Response: 6386502  
 Conc: 29.34 ng/ml

Instrument :  
 ECD\_Q  
 ClientSampleId :  
 DCYC2



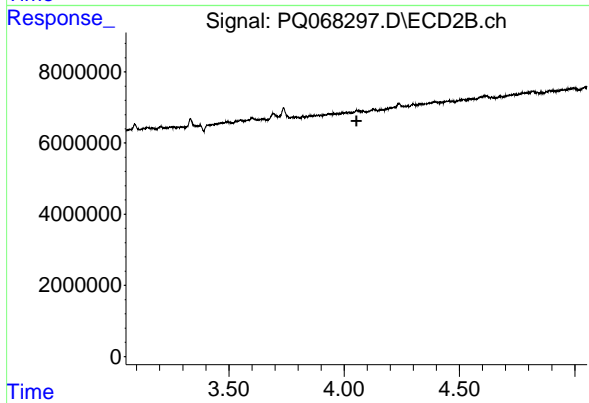
#5 AR-1016-3

R.T.: 0.000 min  
 Exp R.T. : 4.005 min  
 Response: 0  
 Conc: N.D.



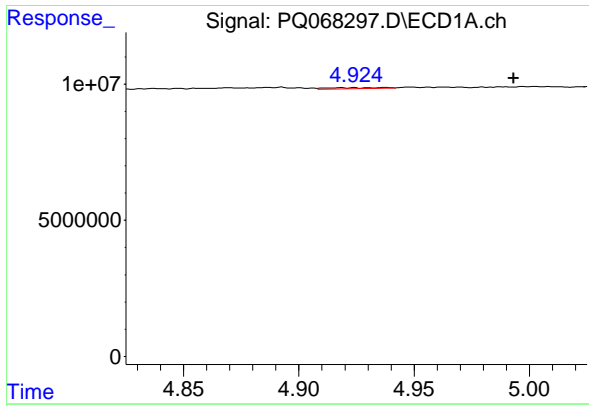
#6 AR-1016-4

R.T.: 4.717 min  
 Delta R.T.: 0.010 min  
 Response: 9601544  
 Conc: 53.08 ng/ml



#6 AR-1016-4

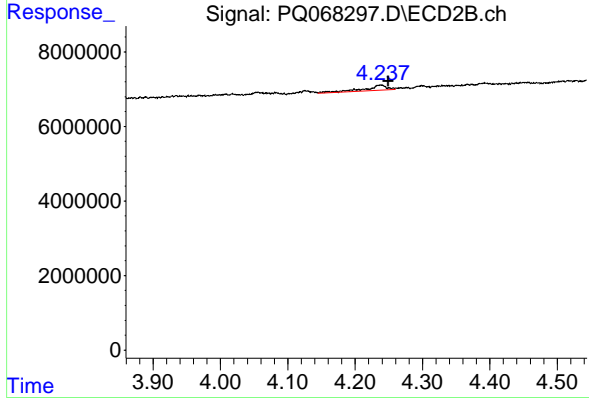
R.T.: 0.000 min  
 Exp R.T. : 4.053 min  
 Response: 0  
 Conc: N.D.



#7 AR-1016-5

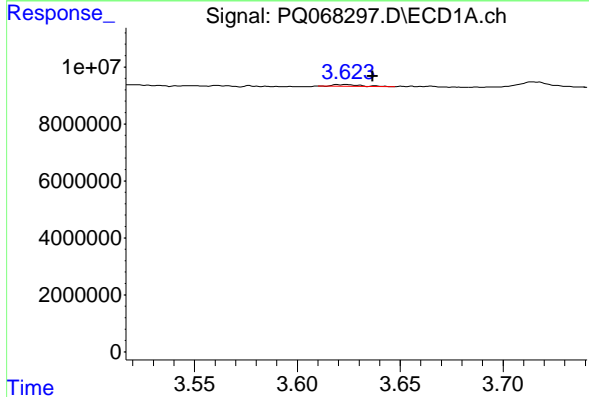
R.T.: 4.924 min  
 Delta R.T.: -0.069 min  
 Response: 581769  
 Conc: 3.35 ng/ml

Instrument :  
 ECD\_Q  
 ClientSampleId :  
 DCYC2



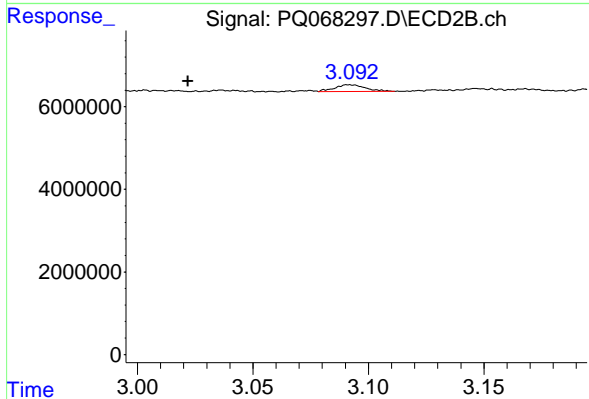
#7 AR-1016-5

R.T.: 4.239 min  
 Delta R.T.: -0.010 min  
 Response: 3350938  
 Conc: 18.20 ng/ml



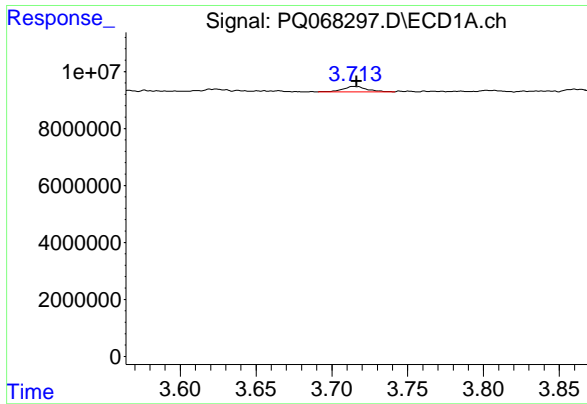
#8 AR-1221-1

R.T.: 3.624 min  
 Delta R.T.: -0.013 min  
 Response: 572857  
 Conc: 6.24 ng/ml



#8 AR-1221-1

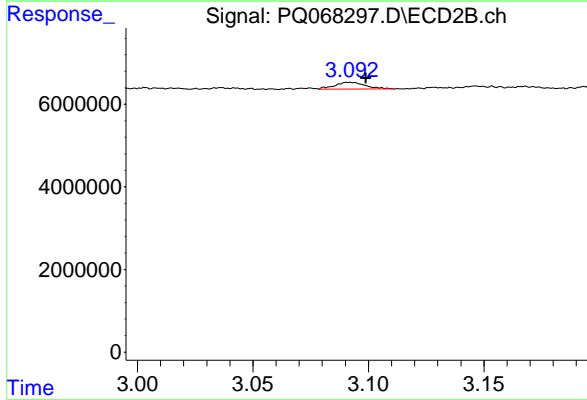
R.T.: 3.091 min  
 Delta R.T.: 0.069 min  
 Response: 1476551  
 Conc: 17.28 ng/ml



#9 AR-1221-2

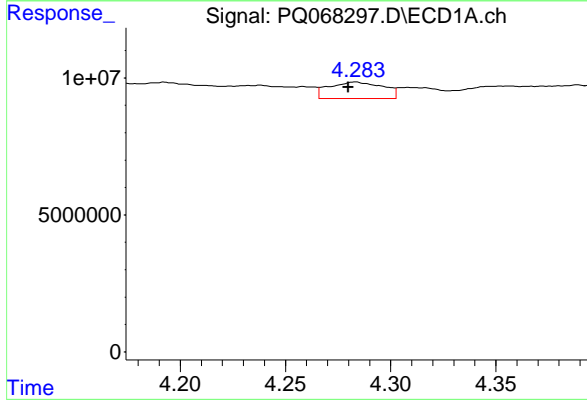
R.T.: 3.715 min  
 Delta R.T.: -0.002 min  
 Response: 2166696  
 Conc: 33.94 ng/ml

Instrument :  
 ECD\_Q  
 ClientSampleId :  
 DCYC2



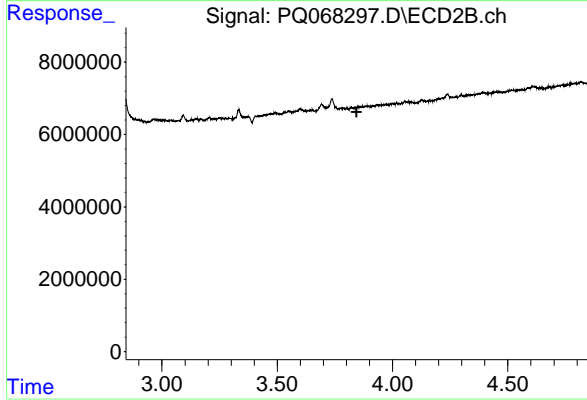
#9 AR-1221-2

R.T.: 3.091 min  
 Delta R.T.: -0.008 min  
 Response: 1476551  
 Conc: 24.77 ng/ml



#12 AR-1232-2

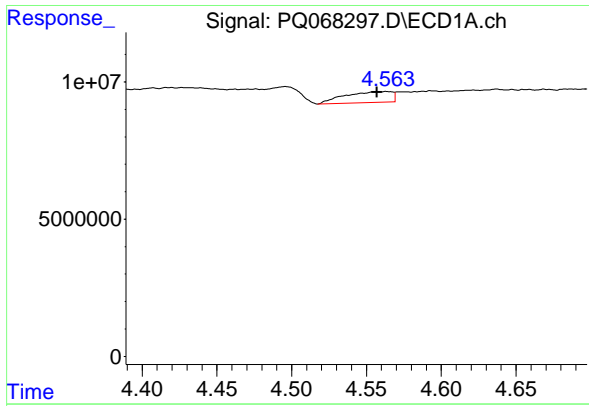
R.T.: 4.283 min  
 Delta R.T.: 0.003 min  
 Response: 10793371  
 Conc: 118.83 ng/ml



#12 AR-1232-2

R.T.: 0.000 min  
 Exp R.T.: 3.844 min  
 Response: 0  
 Conc: N.D.

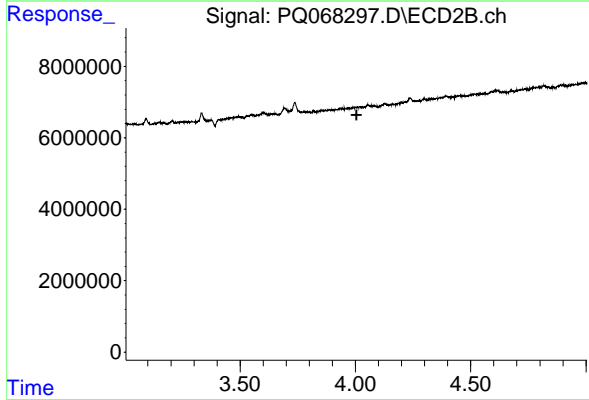




#13 AR-1232-3

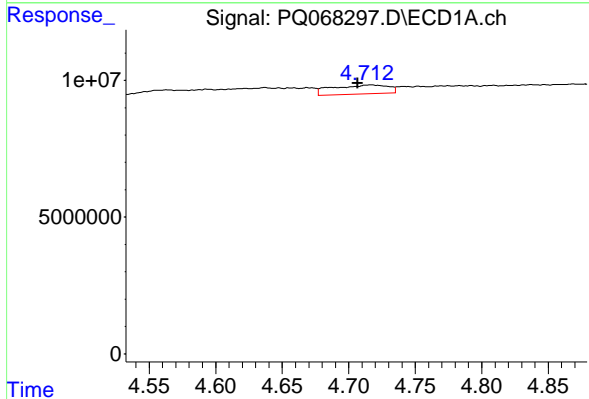
R.T.: 4.563 min  
 Delta R.T.: 0.006 min  
 Response: 8570416  
 Conc: 50.68 ng/ml

Instrument :  
 ECD\_Q  
 ClientSampleId :  
 DCYC2



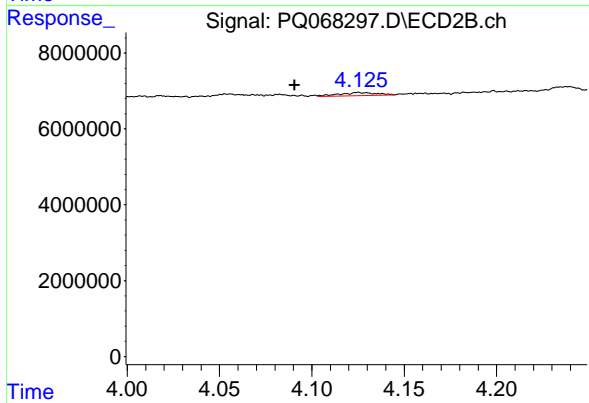
#13 AR-1232-3

R.T.: 0.000 min  
 Exp R.T. : 4.005 min  
 Response: 0  
 Conc: N.D.



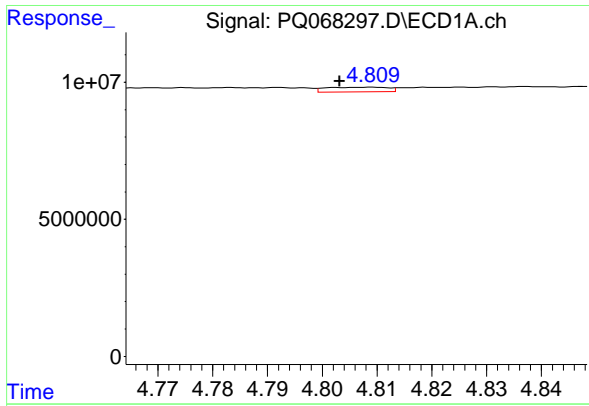
#14 AR-1232-4

R.T.: 4.717 min  
 Delta R.T.: 0.010 min  
 Response: 9601544  
 Conc: 111.13 ng/ml



#14 AR-1232-4

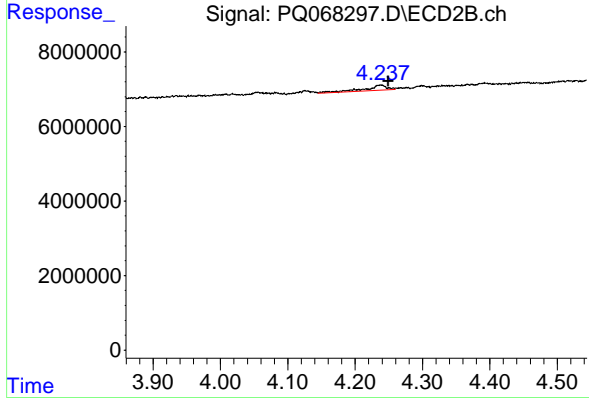
R.T.: 4.125 min  
 Delta R.T.: 0.035 min  
 Response: 1186323  
 Conc: 16.98 ng/ml



#15 AR-1232-5

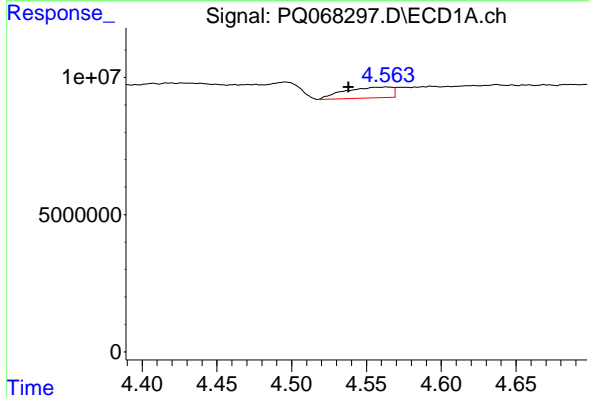
R.T.: 4.809 min  
 Delta R.T.: 0.005 min  
 Response: 1312242  
 Conc: 23.24 ng/ml

Instrument :  
 ECD\_Q  
 ClientSampleId :  
 DCYC2



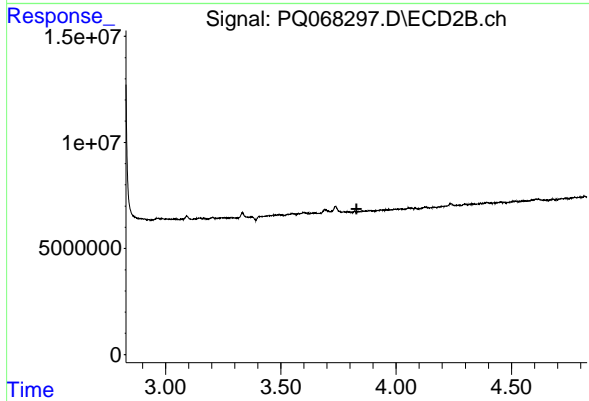
#15 AR-1232-5

R.T.: 4.239 min  
 Delta R.T.: -0.011 min  
 Response: 3350938  
 Conc: 42.63 ng/ml



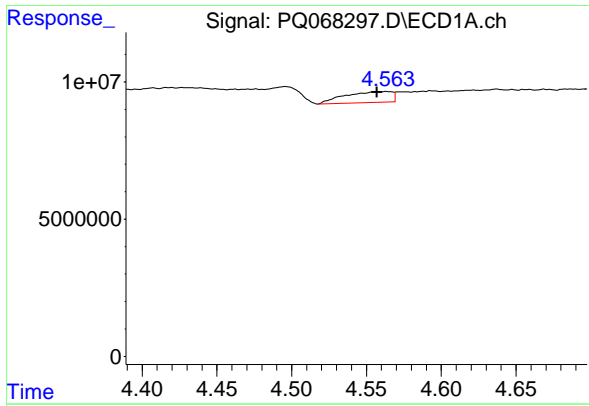
#16 AR-1242-1

R.T.: 4.563 min  
 Delta R.T.: 0.025 min  
 Response: 8570416  
 Conc: 41.93 ng/ml



#16 AR-1242-1

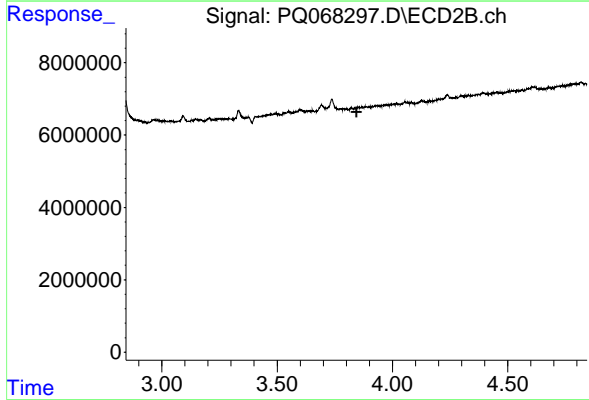
R.T.: 0.000 min  
 Exp R.T. : 3.828 min  
 Response: 0  
 Conc: N.D.



#17 AR-1242-2

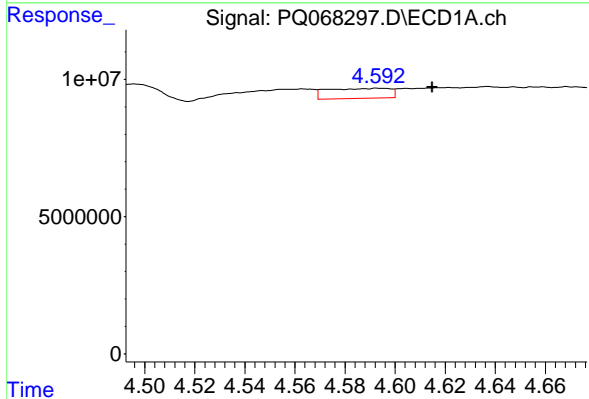
R.T.: 4.563 min  
 Delta R.T.: 0.006 min  
 Response: 8570416  
 Conc: 27.39 ng/ml

Instrument :  
 ECD\_Q  
 ClientSampleId :  
 DCYC2



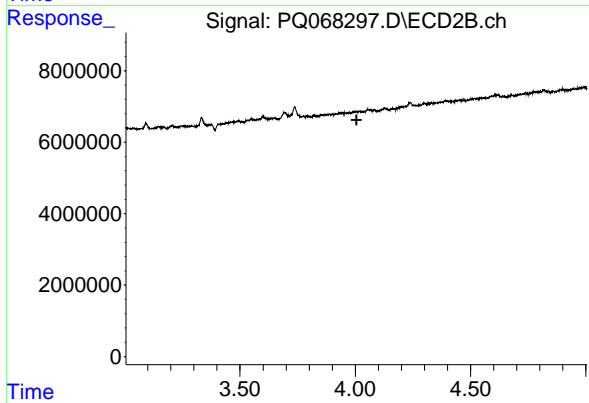
#17 AR-1242-2

R.T.: 0.000 min  
 Exp R.T. : 3.844 min  
 Response: 0  
 Conc: N.D.



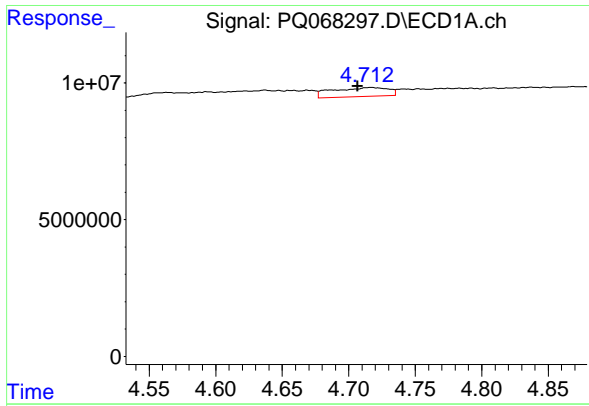
#18 AR-1242-3

R.T.: 4.593 min  
 Delta R.T.: -0.022 min  
 Response: 6386502  
 Conc: 32.64 ng/ml



#18 AR-1242-3

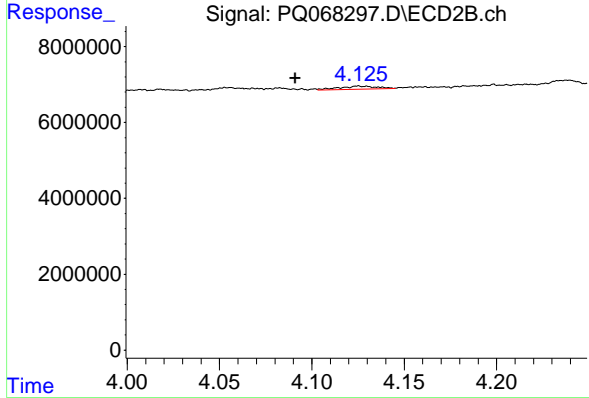
R.T.: 0.000 min  
 Exp R.T. : 4.005 min  
 Response: 0  
 Conc: N.D.



#19 AR-1242-4

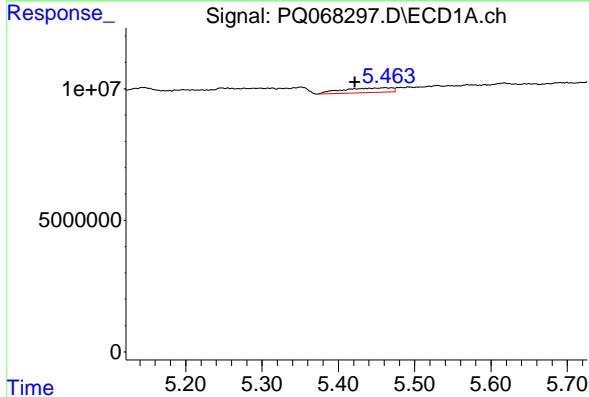
R.T.: 4.717 min  
 Delta R.T.: 0.010 min  
 Response: 9601544  
 Conc: 59.41 ng/ml

Instrument :  
 ECD\_Q  
 ClientSampleId :  
 DCYC2



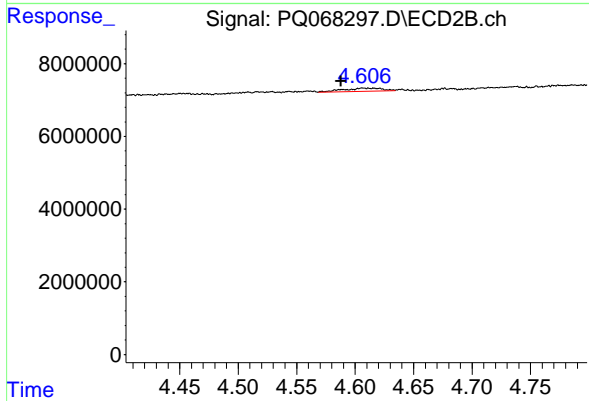
#19 AR-1242-4

R.T.: 4.125 min  
 Delta R.T.: 0.034 min  
 Response: 1186323  
 Conc: 8.11 ng/ml



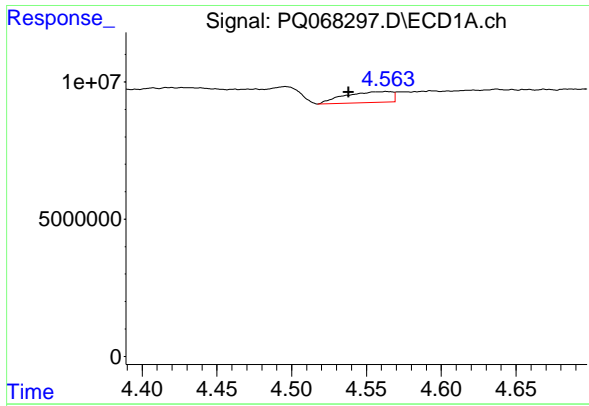
#20 AR-1242-5

R.T.: 5.462 min  
 Delta R.T.: 0.040 min  
 Response: 7895902  
 Conc: 46.70 ng/ml



#20 AR-1242-5

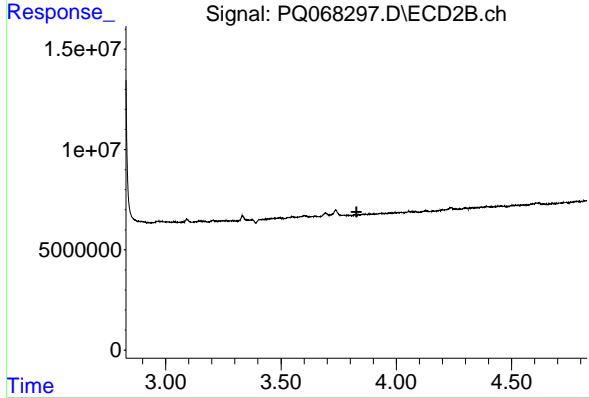
R.T.: 4.607 min  
 Delta R.T.: 0.019 min  
 Response: 2096841  
 Conc: 10.85 ng/ml



#21 AR-1248-1

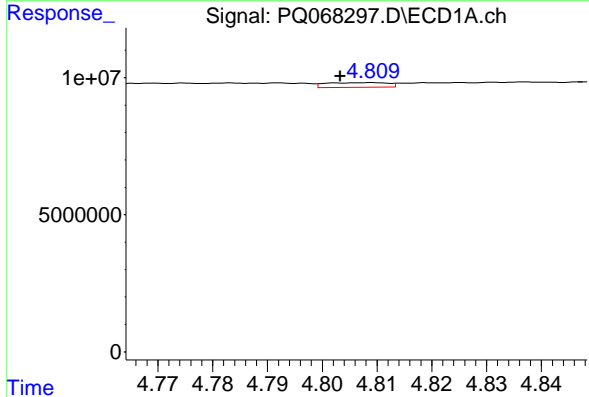
R.T.: 4.563 min  
 Delta R.T.: 0.025 min  
 Response: 8570416  
 Conc: 55.67 ng/ml

Instrument :  
 ECD\_Q  
 ClientSampleId :  
 DCYC2



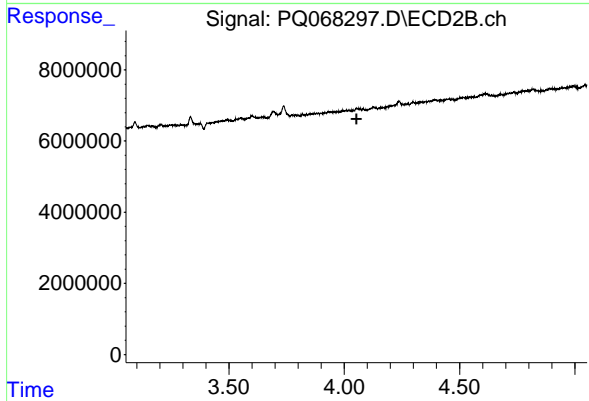
#21 AR-1248-1

R.T.: 0.000 min  
 Exp R.T. : 3.828 min  
 Response: 0  
 Conc: N.D.



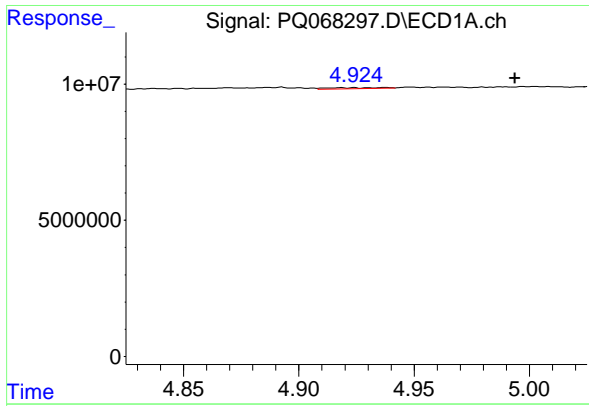
#22 AR-1248-2

R.T.: 4.809 min  
 Delta R.T.: 0.005 min  
 Response: 1312242  
 Conc: 6.24 ng/ml



#22 AR-1248-2

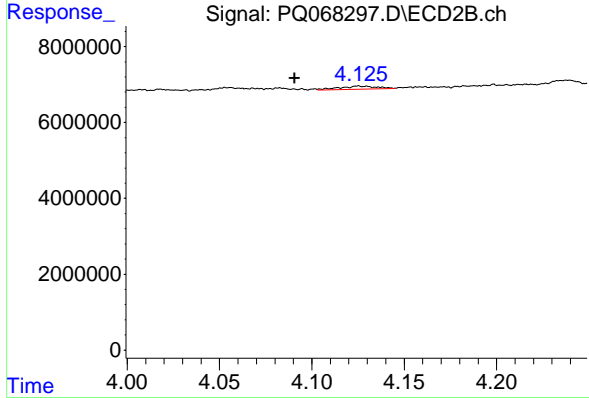
R.T.: 0.000 min  
 Exp R.T. : 4.053 min  
 Response: 0  
 Conc: N.D.



#23 AR-1248-3

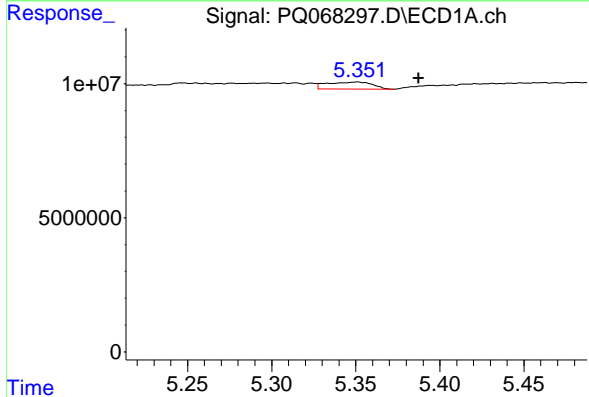
R.T.: 4.924 min  
 Delta R.T.: -0.070 min  
 Response: 581769  
 Conc: 2.31 ng/ml

Instrument :  
 ECD\_Q  
 ClientSampleId :  
 DCYC2



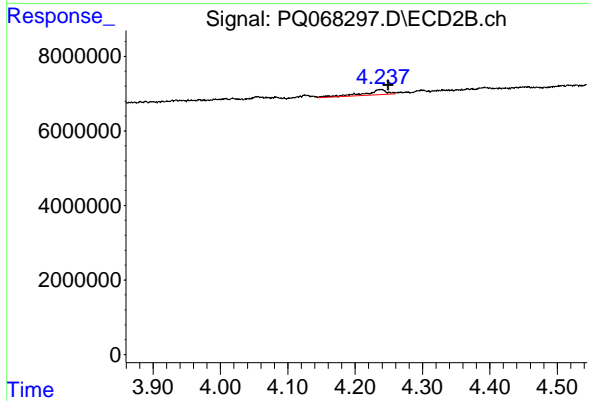
#23 AR-1248-3

R.T.: 4.125 min  
 Delta R.T.: 0.034 min  
 Response: 1186323  
 Conc: 5.52 ng/ml



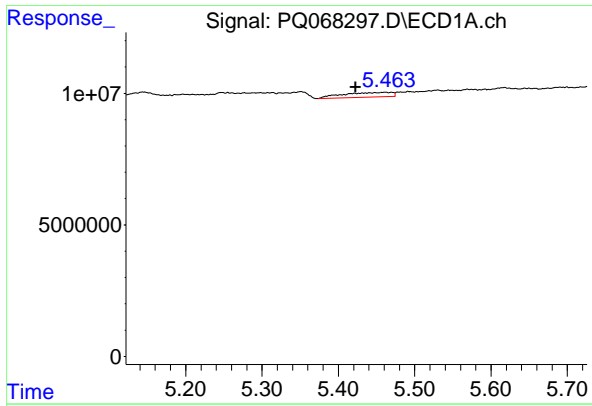
#24 AR-1248-4

R.T.: 5.351 min  
 Delta R.T.: -0.037 min  
 Response: 4884838  
 Conc: 17.37 ng/ml



#24 AR-1248-4

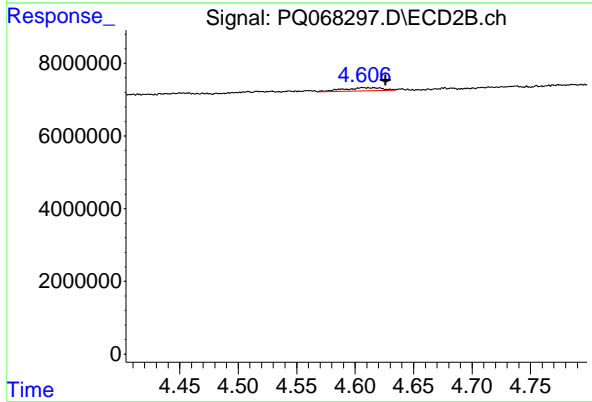
R.T.: 4.239 min  
 Delta R.T.: -0.011 min  
 Response: 3350938  
 Conc: 12.69 ng/ml



#25 AR-1248-5

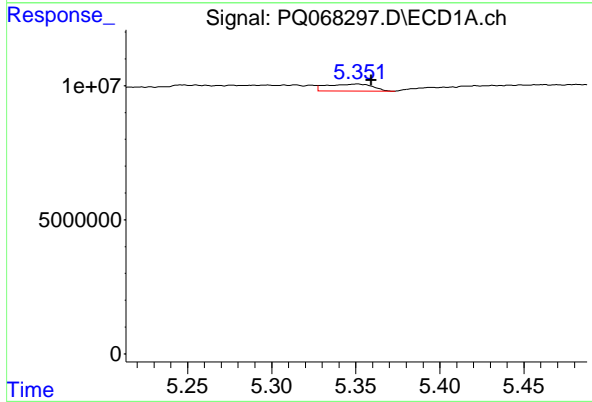
R.T.: 5.462 min  
 Delta R.T.: 0.039 min  
 Response: 7895902  
 Conc: 27.97 ng/ml

Instrument : ECD\_Q  
 ClientSampleId : DCYC2



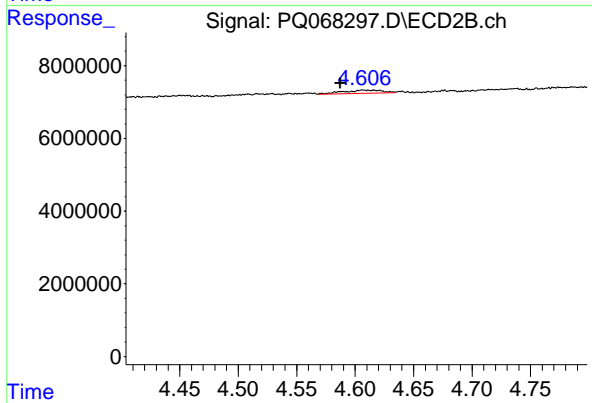
#25 AR-1248-5

R.T.: 4.607 min  
 Delta R.T.: -0.019 min  
 Response: 2096841  
 Conc: 7.93 ng/ml



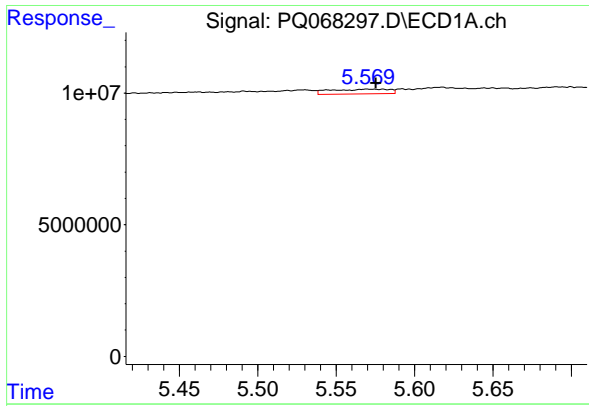
#26 AR-1254-1

R.T.: 5.351 min  
 Delta R.T.: -0.008 min  
 Response: 4884838  
 Conc: 17.66 ng/ml



#26 AR-1254-1

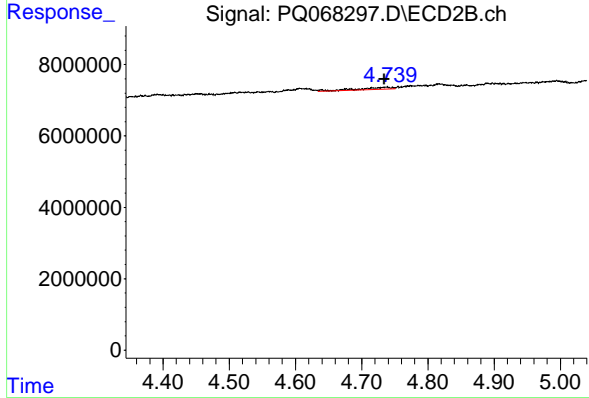
R.T.: 4.607 min  
 Delta R.T.: 0.020 min  
 Response: 2096841  
 Conc: 5.34 ng/ml



#27 AR-1254-2

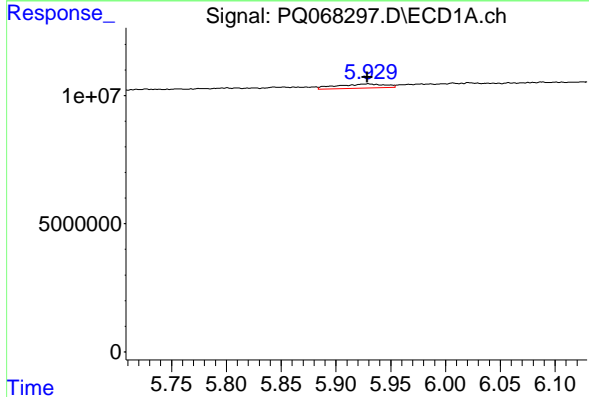
R.T.: 5.569 min  
 Delta R.T.: -0.006 min  
 Response: 4670089  
 Conc: 10.94 ng/ml

Instrument :  
 ECD\_Q  
 ClientSampleId :  
 DCYC2



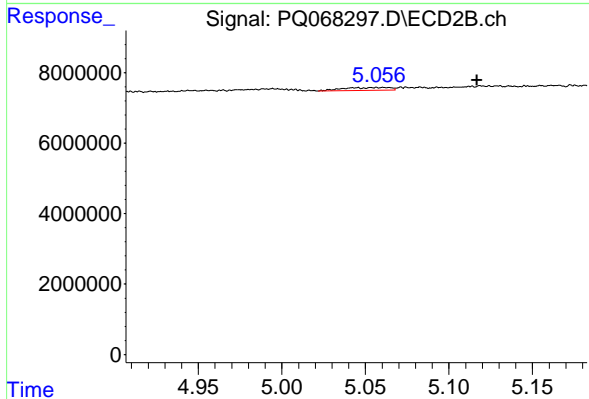
#27 AR-1254-2

R.T.: 4.738 min  
 Delta R.T.: 0.004 min  
 Response: 1813315  
 Conc: 5.28 ng/ml



#28 AR-1254-3

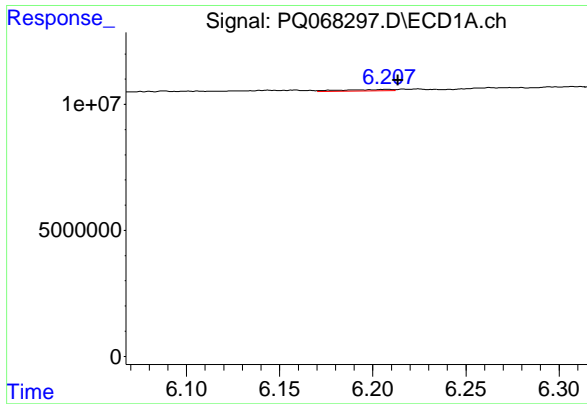
R.T.: 5.930 min  
 Delta R.T.: 0.000 min  
 Response: 4993982  
 Conc: 11.12 ng/ml



#28 AR-1254-3

R.T.: 5.057 min  
 Delta R.T.: -0.060 min  
 Response: 1536322  
 Conc: 2.84 ng/ml

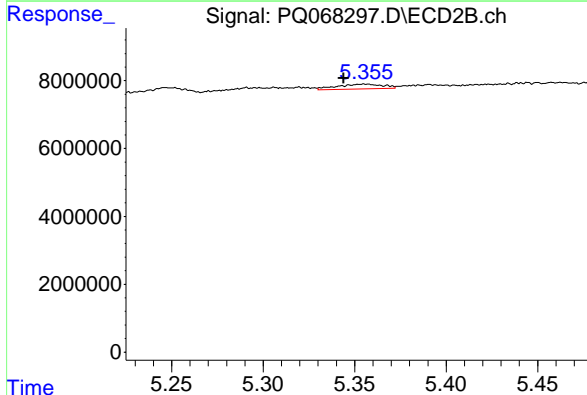




#29 AR-1254-4

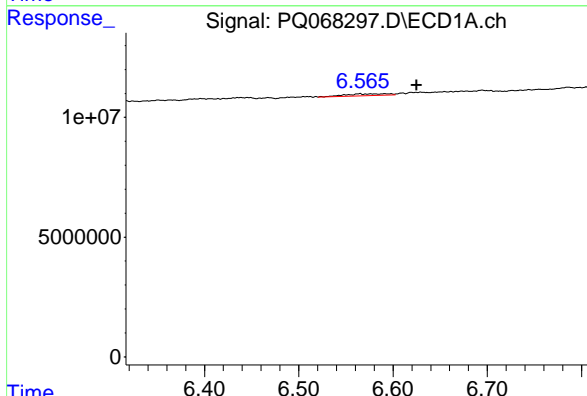
R.T.: 6.208 min  
 Delta R.T.: -0.006 min  
 Response: 1001948  
 Conc: 3.13 ng/ml

Instrument :  
 ECD\_Q  
 ClientSampleId :  
 DCYC2



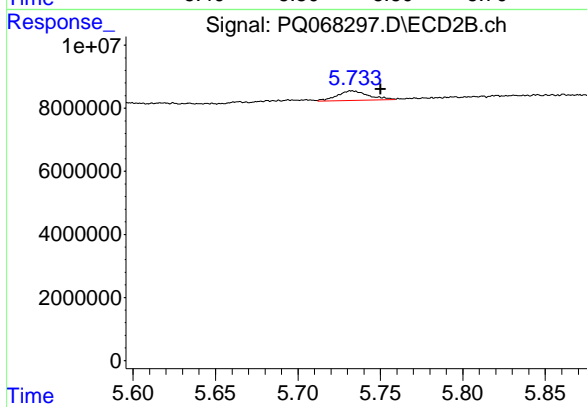
#29 AR-1254-4

R.T.: 5.356 min  
 Delta R.T.: 0.012 min  
 Response: 2453930  
 Conc: 7.28 ng/ml



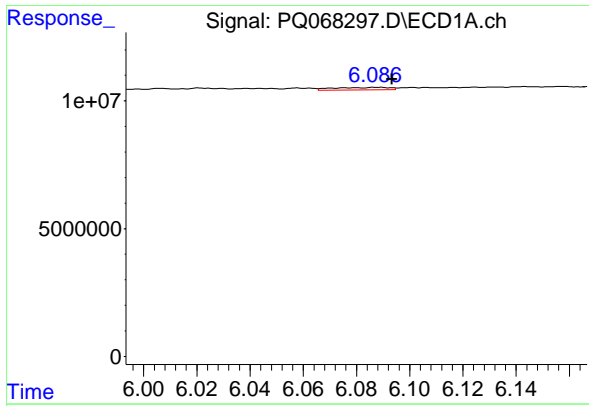
#30 AR-1254-5

R.T.: 6.565 min  
 Delta R.T.: -0.060 min  
 Response: 2504197  
 Conc: 7.22 ng/ml



#30 AR-1254-5

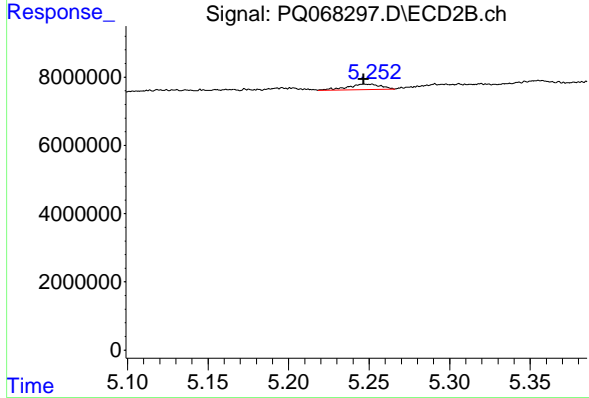
R.T.: 5.733 min  
 Delta R.T.: -0.017 min  
 Response: 4062908  
 Conc: 8.34 ng/ml



#31 AR-1260-1

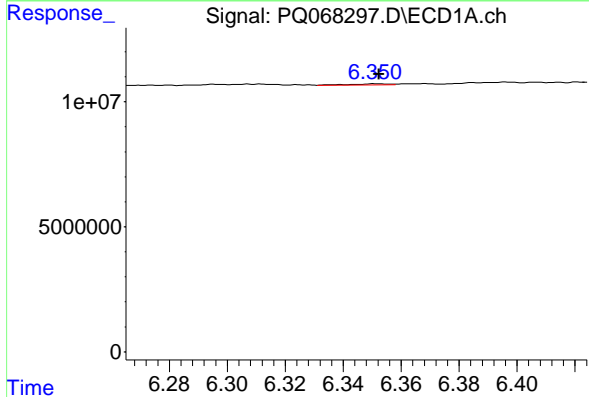
R.T.: 6.088 min  
 Delta R.T.: -0.005 min  
 Response: 1368758  
 Conc: 4.15 ng/ml

Instrument :  
 ECD\_Q  
 ClientSampleId :  
 DCYC2



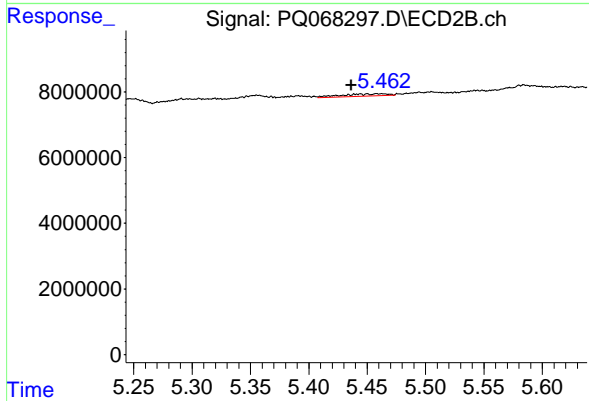
#31 AR-1260-1

R.T.: 5.247 min  
 Delta R.T.: 0.000 min  
 Response: 2281348  
 Conc: 6.27 ng/ml



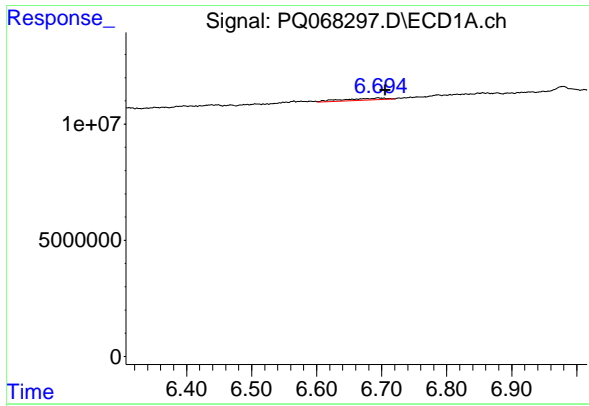
#32 AR-1260-2

R.T.: 6.351 min  
 Delta R.T.: -0.001 min  
 Response: 481927  
 Conc: 1.28 ng/ml



#32 AR-1260-2

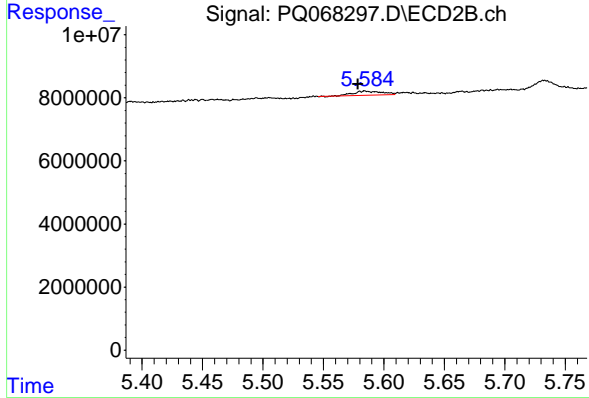
R.T.: 5.450 min  
 Delta R.T.: 0.014 min  
 Response: 1785336  
 Conc: 4.07 ng/ml



#33 AR-1260-3

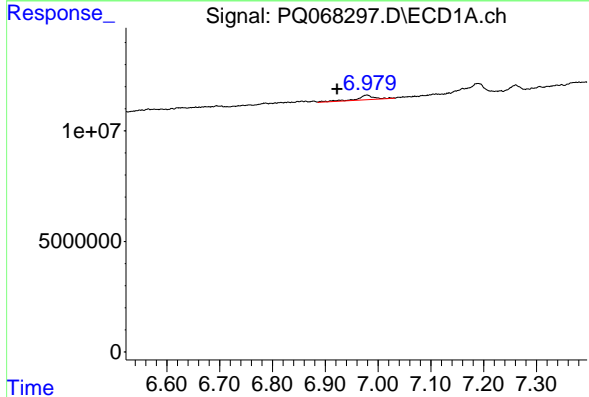
R.T.: 6.695 min  
 Delta R.T.: -0.010 min  
 Response: 3759512  
 Conc: 13.60 ng/ml

Instrument :  
 ECD\_Q  
 ClientSampleId :  
 DCYC2



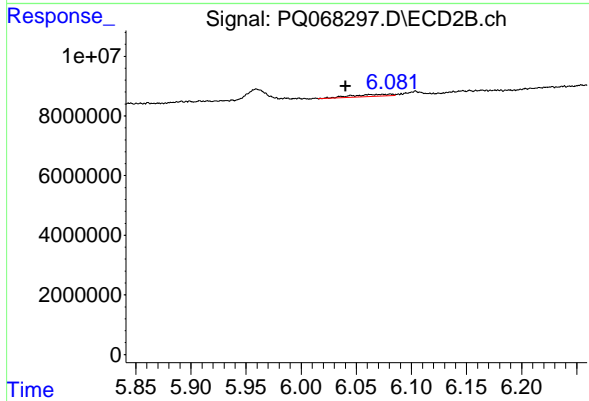
#33 AR-1260-3

R.T.: 5.585 min  
 Delta R.T.: 0.006 min  
 Response: 1997651  
 Conc: 4.63 ng/ml



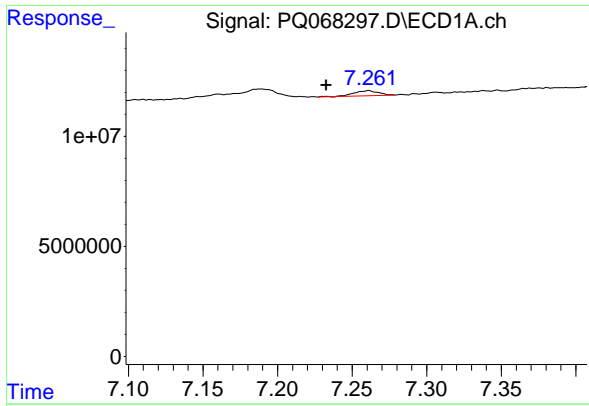
#34 AR-1260-4

R.T.: 6.978 min  
 Delta R.T.: 0.056 min  
 Response: 4318223  
 Conc: 14.14 ng/ml



#34 AR-1260-4

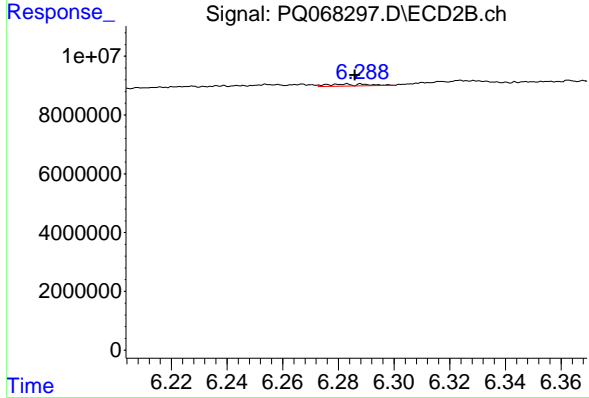
R.T.: 6.081 min  
 Delta R.T.: 0.041 min  
 Response: 1550639  
 Conc: 4.57 ng/ml



#35 AR-1260-5

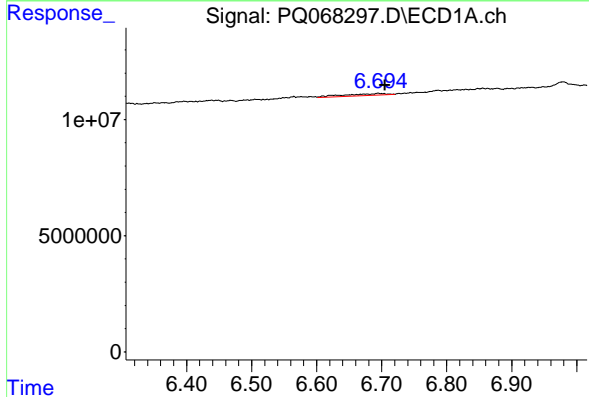
R.T.: 7.260 min  
 Delta R.T.: 0.028 min  
 Response: 2542765  
 Conc: 4.36 ng/ml

Instrument :  
 ECD\_Q  
 ClientSampleId :  
 DCYC2



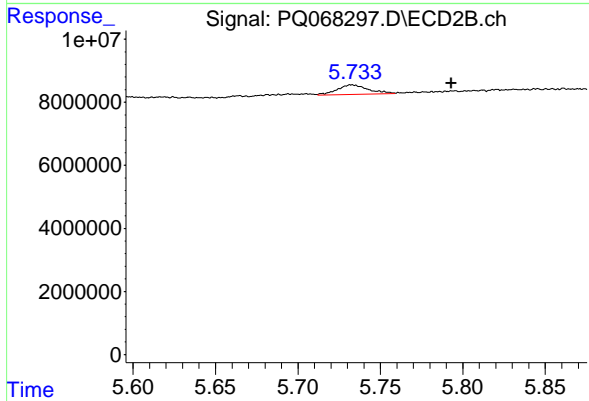
#35 AR-1260-5

R.T.: 6.289 min  
 Delta R.T.: 0.003 min  
 Response: 623200  
 Conc: 0.79 ng/ml



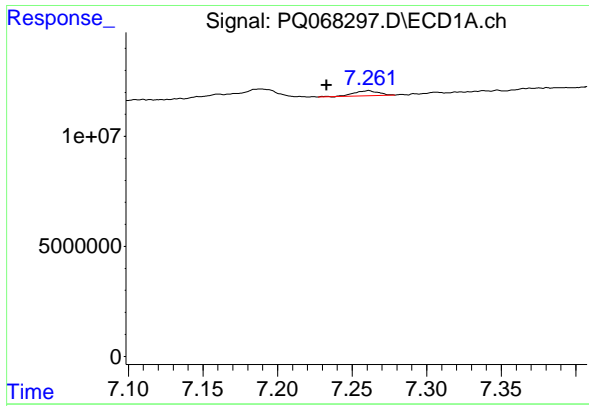
#36 AR-1262-1

R.T.: 6.695 min  
 Delta R.T.: -0.010 min  
 Response: 3759512  
 Conc: 8.90 ng/ml



#36 AR-1262-1

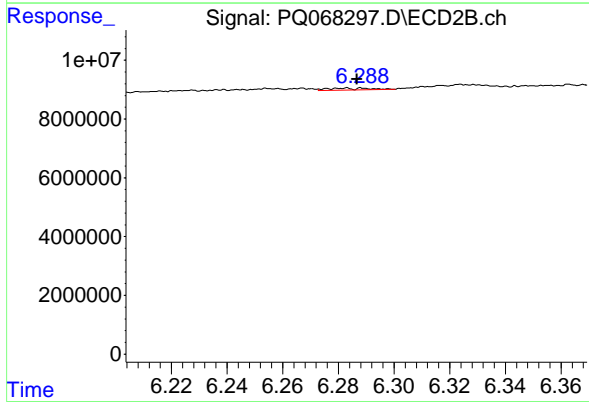
R.T.: 5.733 min  
 Delta R.T.: -0.060 min  
 Response: 4062908  
 Conc: 7.90 ng/ml



#37 AR-1262-2

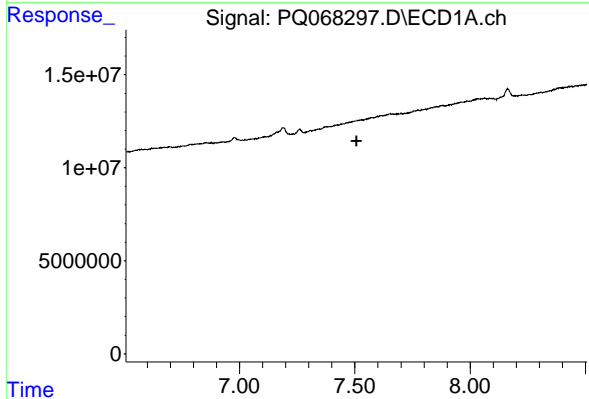
R.T.: 7.260 min  
 Delta R.T.: 0.028 min  
 Response: 2542765  
 Conc: 3.72 ng/ml

Instrument :  
 ECD\_Q  
 ClientSampleId :  
 DCYC2



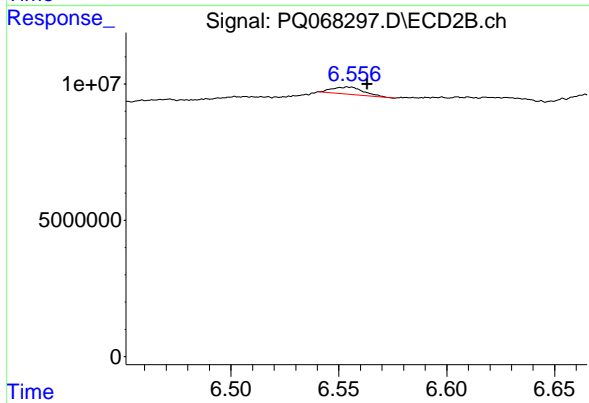
#37 AR-1262-2

R.T.: 6.289 min  
 Delta R.T.: 0.002 min  
 Response: 623200  
 Conc: 0.69 ng/ml



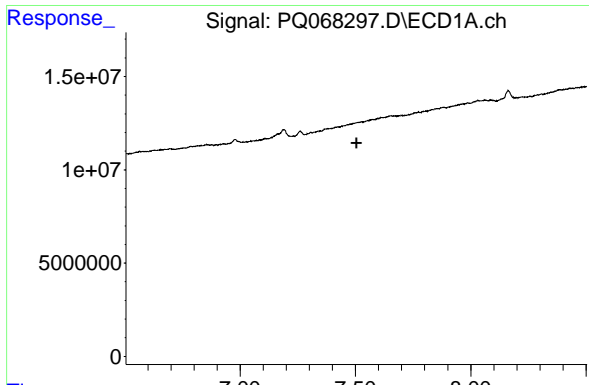
#38 AR-1262-3

R.T.: 0.000 min  
 Exp R.T. : 7.507 min  
 Response: 0  
 Conc: N.D.



#38 AR-1262-3

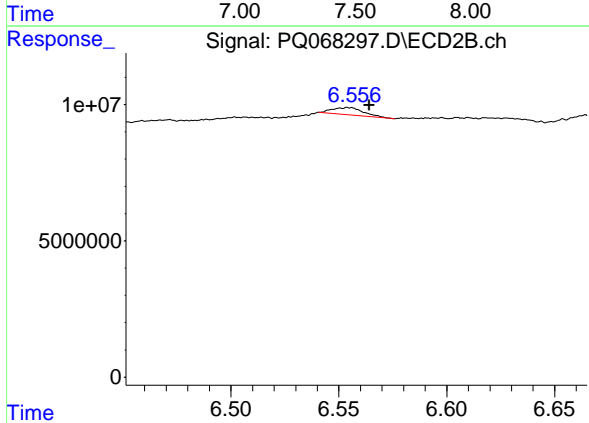
R.T.: 6.554 min  
 Delta R.T.: -0.009 min  
 Response: 2651572  
 Conc: 7.72 ng/ml



#41 AR-1268-1

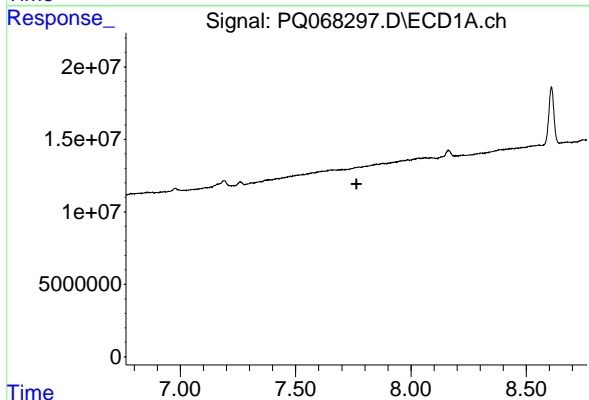
R.T.: 0.000 min  
 Exp R.T.: 7.505 min  
 Response: 0  
 Conc: N.D.

Instrument :  
 ECD\_Q  
 ClientSampleId :  
 DCYC2



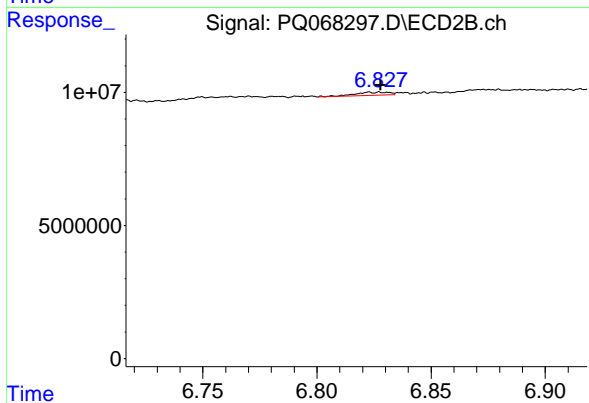
#41 AR-1268-1

R.T.: 6.554 min  
 Delta R.T.: -0.010 min  
 Response: 2651572  
 Conc: 2.66 ng/ml



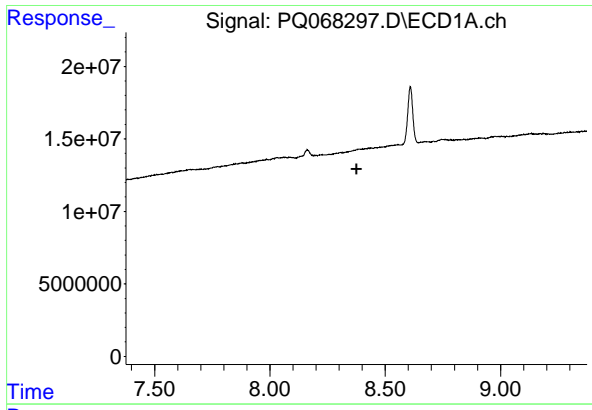
#43 AR-1268-3

R.T.: 0.000 min  
 Exp R.T.: 7.764 min  
 Response: 0  
 Conc: N.D.



#43 AR-1268-3

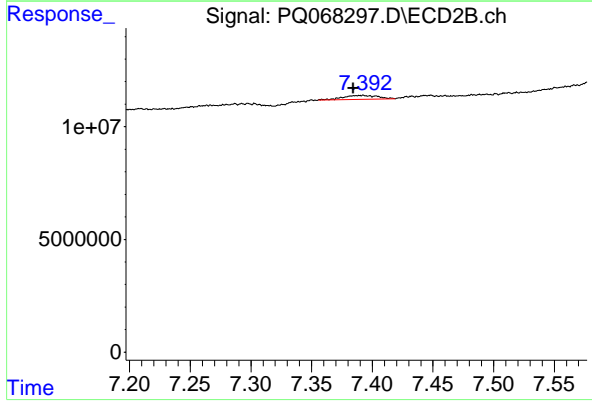
R.T.: 6.823 min  
 Delta R.T.: -0.005 min  
 Response: 1133914  
 Conc: 1.39 ng/ml



#45 AR-1268-5

R.T.: 0.000 min  
 Exp R.T.: 8.375 min  
 Response: 0  
 Conc: N.D.

Instrument :  
 ECD\_Q  
 ClientSampleId :  
 DCYC2



#45 AR-1268-5

R.T.: 7.392 min  
 Delta R.T.: 0.007 min  
 Response: 3436885  
 Conc: 1.42 ng/ml