

Data Path : Z:\pestpcbsrv\HPCHEM1\ECD\_Q\Data\PQ082824\  
 Data File : PQ068327.D  
 Signal(s) : Signal #1: ECD1A.ch Signal #2: ECD2B.ch  
 Acq On : 28 Aug 2024 20:16  
 Operator : YP\AJ  
 Sample : AR1254CCC400  
 Misc :  
 ALS Vial : 6 Sample Multiplier: 1

Instrument :  
 ECD\_Q  
 ClientSampleId :  
 AR12543102

Integration File signal 1: autoint1.e  
 Integration File signal 2: autoint2.e  
 Quant Time: Aug 29 02:07:41 2024  
 Quant Method : Z:\pestpcbsrv\HPCHEM1\ECD\_Q\Method\PQ082724CLP.M  
 Quant Title : GC EXTRACTABLES  
 QLast Update : Wed Aug 28 02:08:25 2024  
 Response via : Initial Calibration  
 Integrator: ChemStation

Volume Inj. : 1 µl  
 Signal #1 Phase : ZB MR1 Signal #2 Phase: ZB MR2  
 Signal #1 Info : 30Mx0.32mmx 0.5µm Signal #2 Info : 30M x 0.32mm x 0.25µm

Compound	RT#1	RT#2	Resp#1	Resp#2	ng/ml	ng/ml
-----						
System Monitoring Compounds						
1) SA Tetrachlo...	3.437	2.821	152.6E6	142.2E6	19.321	20.078
2) SA Decachlor...	8.607	7.599	90859383	134.4E6	39.948	39.741
Target Compounds						
3) L1 AR-1016-1	4.537	3.827	3480678	4546985	15.400	20.782 #
4) L1 AR-1016-2	4.559	3.827	4393374	4546985	12.483	13.885
5) L1 AR-1016-3	4.614	4.006	4055956	2066922	18.636	11.784 #
6) L1 AR-1016-4	4.706	4.053	1956673	61083220	10.818	418.949 #
7) L1 AR-1016-5	4.992	4.249	35149149	37582587	202.246	204.072
8) L2 AR-1221-1	0.000	2.965f	0	2268952	N.D.	26.555 #
9) L2 AR-1221-2	3.715	3.092	2887590	1613386	45.231	27.066 #
10) L2 AR-1221-3	3.787	0.000	598690	0	2.899	N.D. #
11) L3 AR-1232-1	3.787	0.000	598690	0	3.627	N.D. #
12) L3 AR-1232-2	4.279	3.827	4041458	4546985	44.496	29.321 #
13) L3 AR-1232-3	4.559	4.006	4393374	2066922	25.979	25.419
14) L3 AR-1232-4	4.706	4.090	1956673	17836731	22.646	255.354 #
15) L3 AR-1232-5	4.801	4.249	59815041	37582587	1059.211	478.125 #
16) L4 AR-1242-1	4.537	3.827	3480678	4546985	17.029	23.502 #
17) L4 AR-1242-2	4.559	3.827	4393374	4546985	14.041	15.646
18) L4 AR-1242-3	4.614	4.006	4055956	2066922	20.730	13.344 #
19) L4 AR-1242-4	4.706	4.090	1956673	17836731	12.106	121.907 #
20) L4 AR-1242-5	5.424	4.587	31267522	150.9E6	184.938	780.642 #
21) L5 AR-1248-1	4.537	3.827	3480678	4546985	22.608	31.873 #
22) L5 AR-1248-2	4.801	4.053	59815041	61083220	284.639	276.165
23) L5 AR-1248-3	4.992	4.090	35149149	17836731	139.311	83.062 #
24) L5 AR-1248-4	5.386	4.249	52987493	37582587	188.442	142.308
25) L5 AR-1248-5	5.424	4.625	31267522	19823909	110.767	74.933 #
26) L6 AR-1254-1	5.358	4.587	105.9E6	150.9E6	382.942	384.061
27) L6 AR-1254-2	5.575	4.734	161.2E6	131.6E6	377.533	383.590
28) L6 AR-1254-3	5.928	5.116	170.6E6	206.1E6	379.789	380.773
29) L6 AR-1254-4	6.212	5.343	120.4E6	130.8E6	376.697	387.878
30) L6 AR-1254-5	6.625	5.749	132.2E6	185.9E6	381.317	381.545
31) L7 AR-1260-1	6.093	5.247	68687057	99734763	208.141	274.221 #
32) L7 AR-1260-2	6.352	5.436	69183130	85644446	183.603	195.127
33) L7 AR-1260-3	6.704	5.573	5067475	84766149	18.326	196.664 #
34) L7 AR-1260-4	6.901	6.040	50402934	8202411	165.083	24.154 #
35) L7 AR-1260-5	7.232	6.285	16915826	21623039	28.984	27.245
36) L8 AR-1262-1	6.704	5.812	5067475	15191041	11.992	29.524 #
37) L8 AR-1262-2	7.232	6.285	16915826	21623039	24.768	24.014
38) L8 AR-1262-3	7.512	6.554	13345800	2605376	30.150	7.585 #
39) L8 AR-1262-4	7.554	6.617	3145998	20136191	9.183	30.433 #
40) L8 AR-1262-5	8.088	0.000	321066	0	1.529	N.D. #
41) L9 AR-1268-1	7.512	6.554	13345800	2605376	17.370	2.615 #

Data Path : Z:\pestpcbsrv\HPCHEM1\ECD\_Q\Data\PQ082824\  
 Data File : PQ068327.D  
 Signal(s) : Signal #1: ECD1A.ch Signal #2: ECD2B.ch  
 Acq On : 28 Aug 2024 20:16  
 Operator : YP\AJ  
 Sample : AR1254CCC400  
 Misc :  
 ALS Vial : 6 Sample Multiplier: 1

Instrument :  
 ECD\_Q  
 ClientSampleId :  
 AR12543102

Integration File signal 1: autoint1.e  
 Integration File signal 2: autoint2.e  
 Quant Time: Aug 29 02:07:41 2024  
 Quant Method : Z:\pestpcbsrv\HPCHEM1\ECD\_Q\Method\PQ082724CLP.M  
 Quant Title : GC EXTRACTABLES  
 QLast Update : Wed Aug 28 02:08:25 2024  
 Response via : Initial Calibration  
 Integrator: ChemStation

Volume Inj. : 1 µl  
 Signal #1 Phase : ZB MR1 Signal #2 Phase: ZB MR2  
 Signal #1 Info : 30Mx0.32mmx 0.5µm Signal #2 Info : 30M x 0.32mm x 0.25µm

	Compound	RT#1	RT#2	Resp#1	Resp#2	ng/ml	ng/ml
42)	L9 AR-1268-2	7.554	6.617	3145998	20136191	4.384	21.584 #
43)	L9 AR-1268-3	7.770	6.831	693433	1033596	1.200	1.267
44)	L9 AR-1268-4	8.088	0.000	321066	0	1.393	N.D. #
45)	L9 AR-1268-5	8.397	7.381	1032547	1266910	0.635	0.524

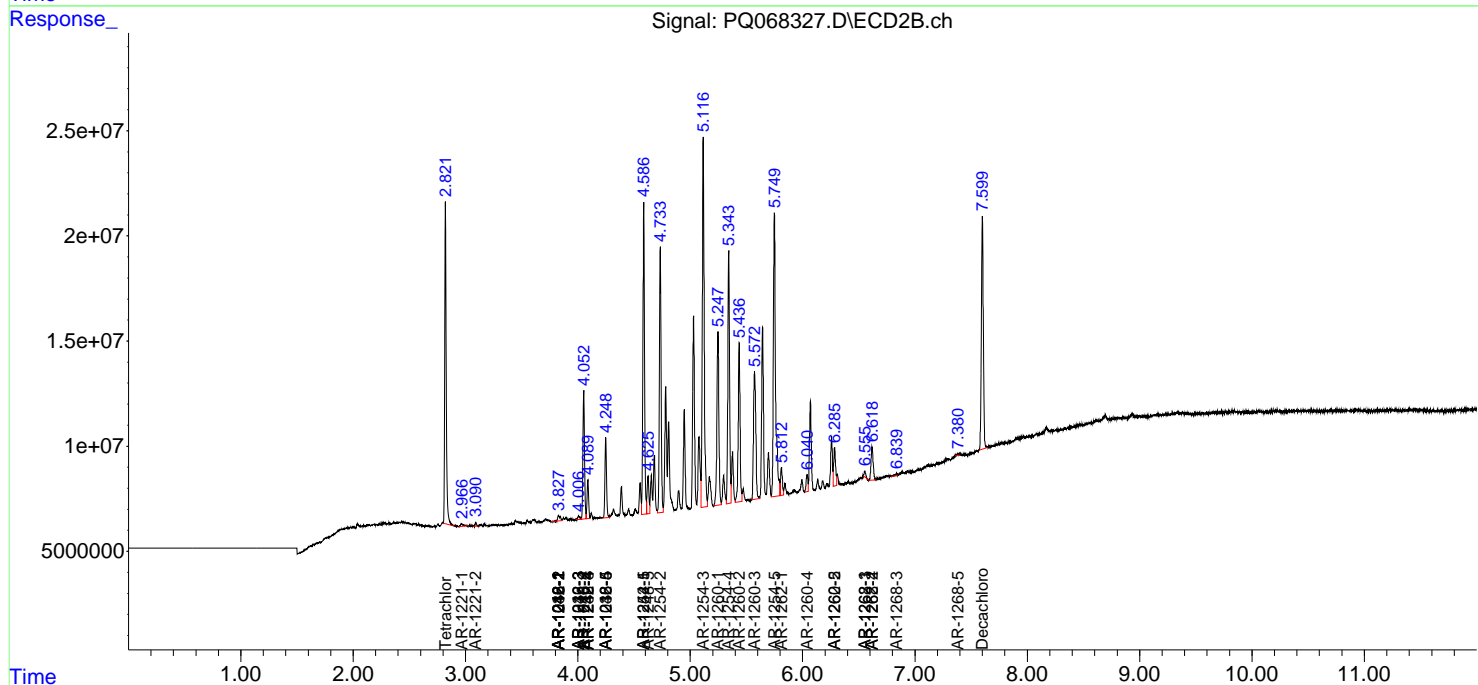
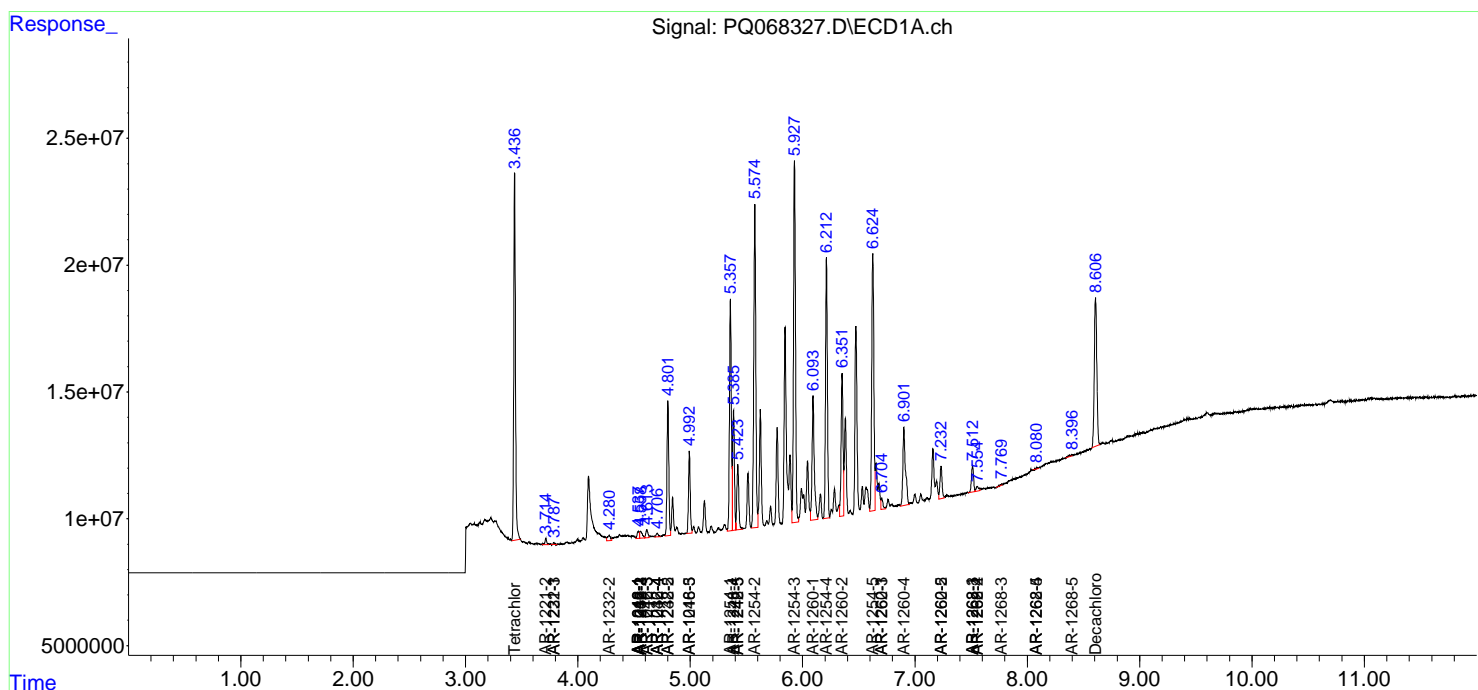
(f)=RT Delta > 1/2 Window (#)=Amounts differ by > 25% (m)=manual int.

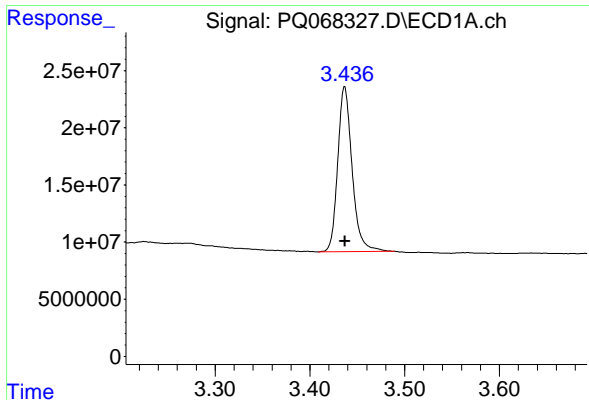
Data Path : Z:\pestpcbsrv\HPCHEM1\ECD\_Q\Data\PQ082824\  
 Data File : PQ068327.D  
 Signal(s) : Signal #1: ECD1A.ch Signal #2: ECD2B.ch  
 Acq On : 28 Aug 2024 20:16  
 Operator : YP\AJ  
 Sample : AR1254CCC400  
 Misc :  
 ALS Vial : 6 Sample Multiplier: 1

Instrument :  
 ECD\_Q  
 ClientSampleId :  
 AR12543102

Integration File signal 1: autoint1.e  
 Integration File signal 2: autoint2.e  
 Quant Time: Aug 29 02:07:41 2024  
 Quant Method : Z:\pestpcbsrv\HPCHEM1\ECD\_Q\Method\PQ082724CLP.M  
 Quant Title : GC EXTRACTABLES  
 QLast Update : Wed Aug 28 02:08:25 2024  
 Response via : Initial Calibration  
 Integrator: ChemStation

Volume Inj. : 1 µl  
 Signal #1 Phase : ZB MR1 Signal #2 Phase: ZB MR2  
 Signal #1 Info : 30Mx0.32mmx 0.5µm Signal #2 Info : 30M x 0.32mm x 0.25µm

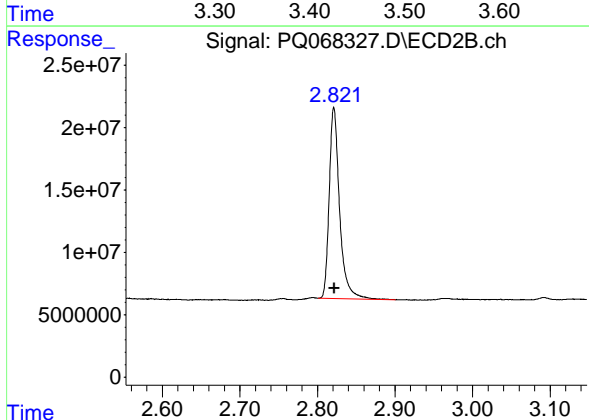




#1 Tetrachloro-m-xylene

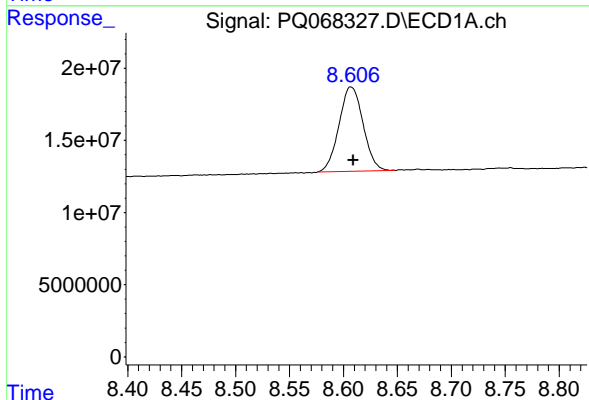
R.T.: 3.437 min  
 Delta R.T.: 0.000 min  
 Response: 152642863  
 Conc: 19.32 ng/ml

Instrument : ECD\_Q  
 ClientSampleId : AR12543102



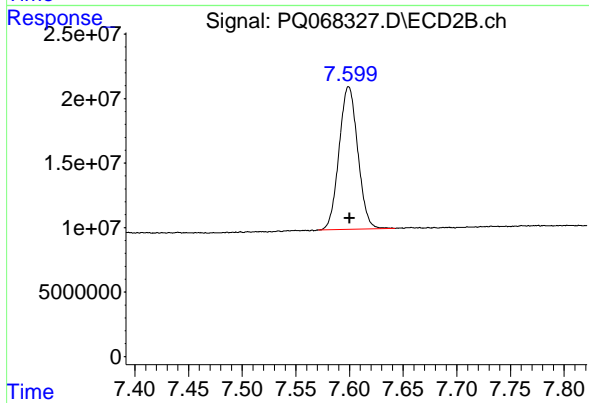
#1 Tetrachloro-m-xylene

R.T.: 2.821 min  
 Delta R.T.: 0.000 min  
 Response: 142206289  
 Conc: 20.08 ng/ml



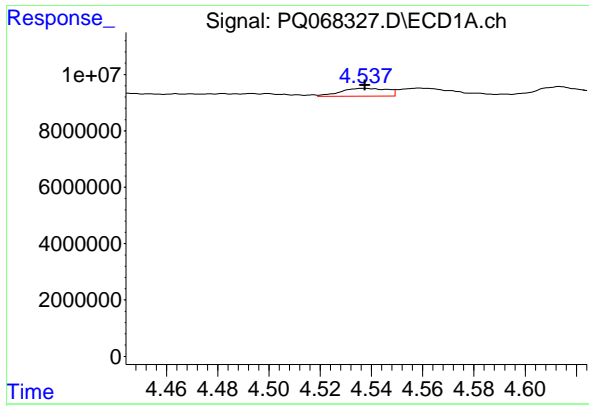
#2 Decachlorobiphenyl

R.T.: 8.607 min  
 Delta R.T.: -0.002 min  
 Response: 90859383  
 Conc: 39.95 ng/ml



#2 Decachlorobiphenyl

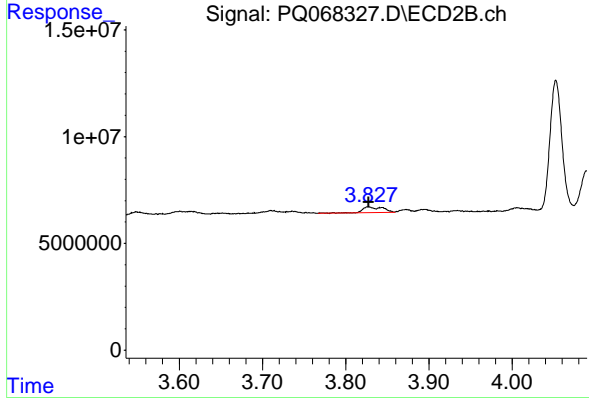
R.T.: 7.599 min  
 Delta R.T.: -0.001 min  
 Response: 134407434  
 Conc: 39.74 ng/ml



#3 AR-1016-1

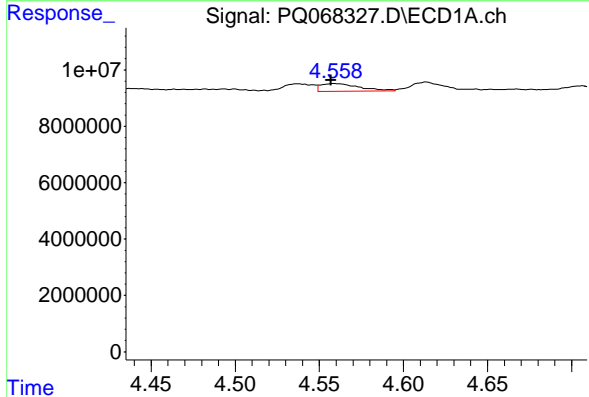
R.T.: 4.537 min  
 Delta R.T.: 0.000 min  
 Response: 3480678  
 Conc: 15.40 ng/ml

Instrument : ECD\_Q  
 ClientSampleId : AR12543102



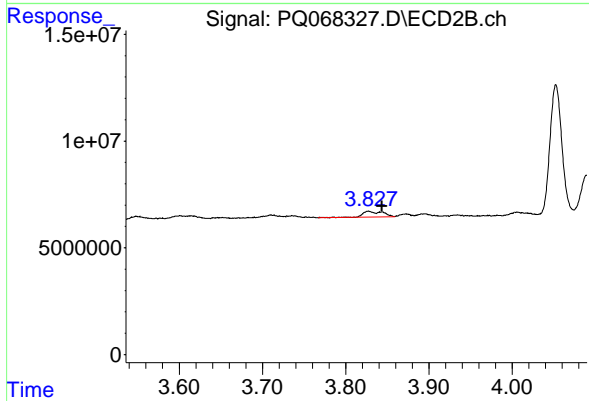
#3 AR-1016-1

R.T.: 3.827 min  
 Delta R.T.: 0.000 min  
 Response: 4546985  
 Conc: 20.78 ng/ml



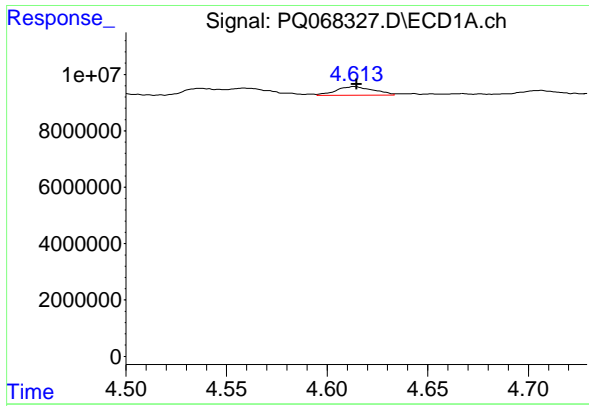
#4 AR-1016-2

R.T.: 4.559 min  
 Delta R.T.: 0.002 min  
 Response: 4393374  
 Conc: 12.48 ng/ml



#4 AR-1016-2

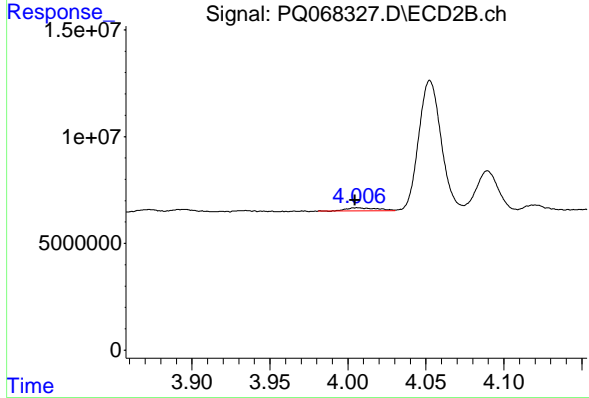
R.T.: 3.827 min  
 Delta R.T.: -0.016 min  
 Response: 4546985  
 Conc: 13.89 ng/ml



#5 AR-1016-3

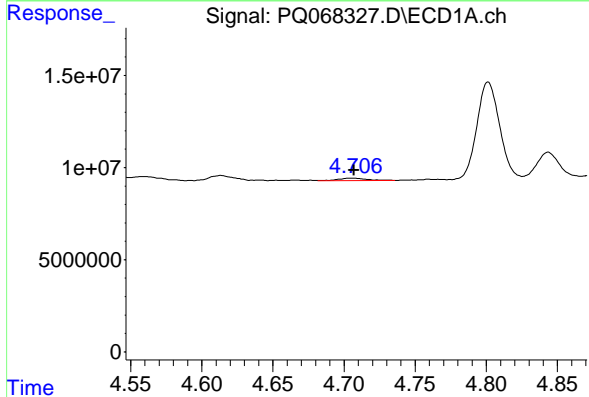
R.T.: 4.614 min  
 Delta R.T.: -0.001 min  
 Response: 4055956  
 Conc: 18.64 ng/ml

Instrument : ECD\_Q  
 ClientSampleId : AR12543102



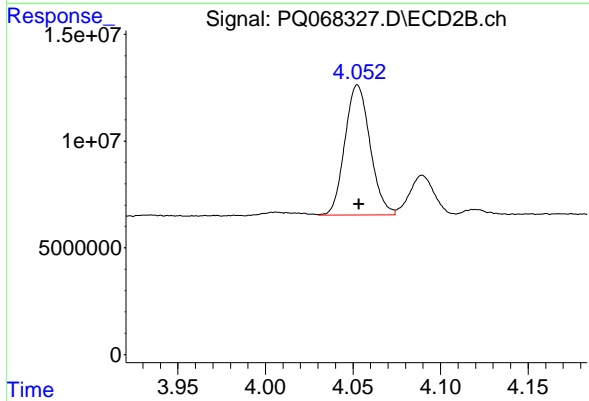
#5 AR-1016-3

R.T.: 4.006 min  
 Delta R.T.: 0.002 min  
 Response: 2066922  
 Conc: 11.78 ng/ml



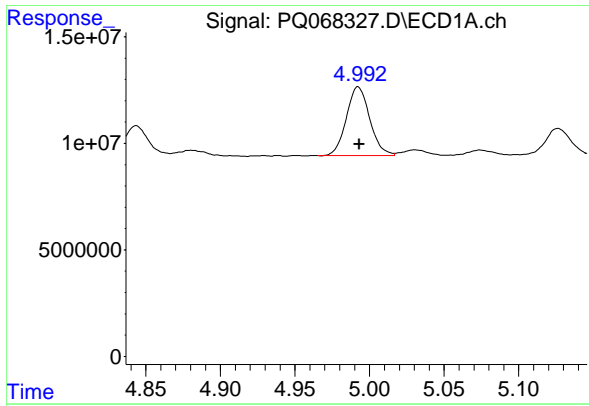
#6 AR-1016-4

R.T.: 4.706 min  
 Delta R.T.: 0.000 min  
 Response: 1956673  
 Conc: 10.82 ng/ml



#6 AR-1016-4

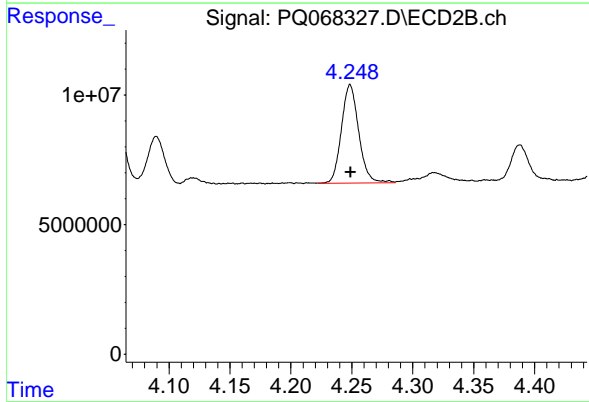
R.T.: 4.053 min  
 Delta R.T.: 0.000 min  
 Response: 61083220  
 Conc: 418.95 ng/ml



#7 AR-1016-5

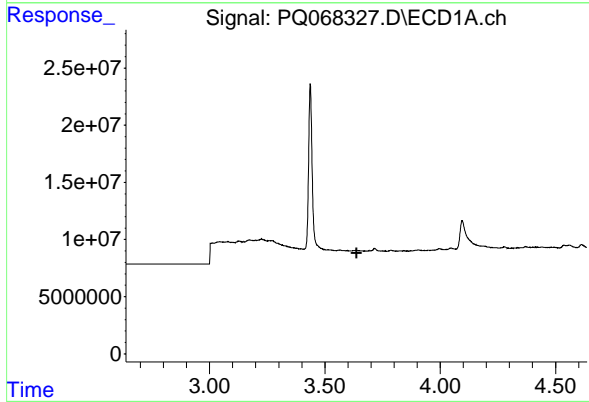
R.T.: 4.992 min  
 Delta R.T.: 0.000 min  
 Response: 35149149  
 Conc: 202.25 ng/ml

Instrument :  
 ECD\_Q  
 ClientSampleId :  
 AR12543102



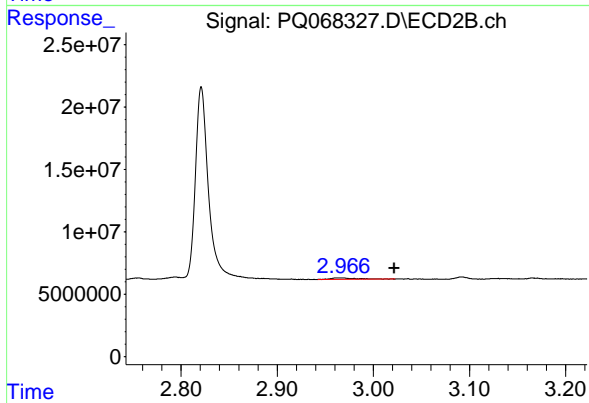
#7 AR-1016-5

R.T.: 4.249 min  
 Delta R.T.: 0.000 min  
 Response: 37582587  
 Conc: 204.07 ng/ml



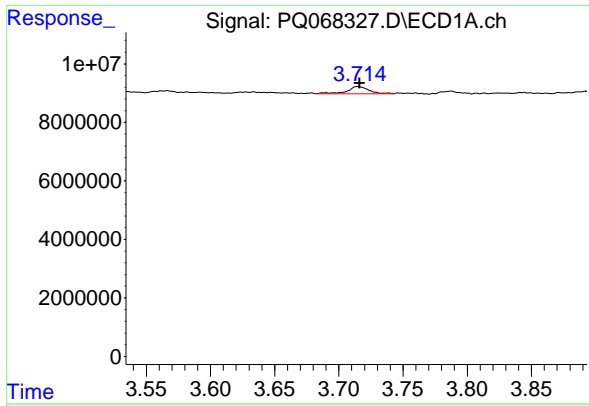
#8 AR-1221-1

R.T.: 0.000 min  
 Exp R.T. : 3.637 min  
 Response: 0  
 Conc: N.D.



#8 AR-1221-1

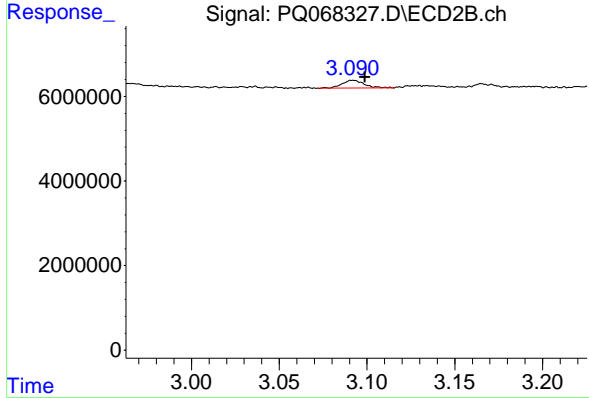
R.T.: 2.965 min  
 Delta R.T.: -0.057 min  
 Response: 2268952  
 Conc: 26.56 ng/ml



#9 AR-1221-2

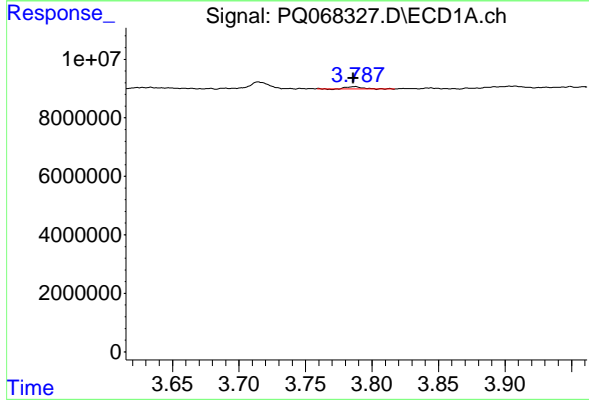
R.T.: 3.715 min  
 Delta R.T.: -0.002 min  
 Response: 2887590  
 Conc: 45.23 ng/ml

Instrument :  
 ECD\_Q  
 ClientSampleId :  
 AR12543102



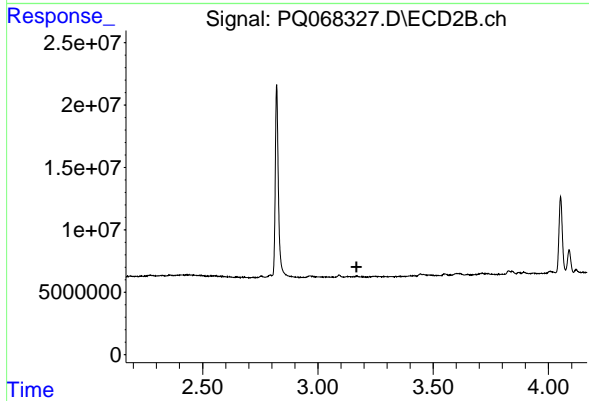
#9 AR-1221-2

R.T.: 3.092 min  
 Delta R.T.: -0.007 min  
 Response: 1613386  
 Conc: 27.07 ng/ml



#10 AR-1221-3

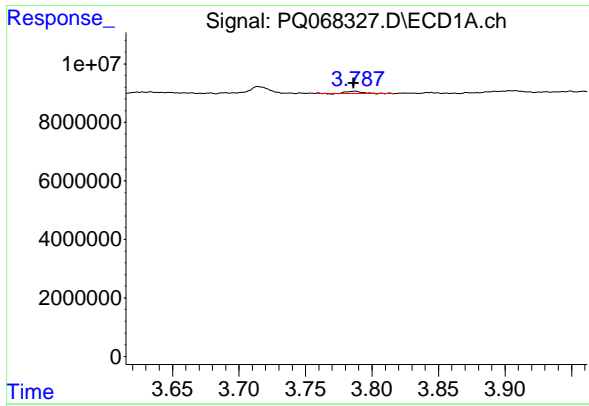
R.T.: 3.787 min  
 Delta R.T.: 0.001 min  
 Response: 598690  
 Conc: 2.90 ng/ml



#10 AR-1221-3

R.T.: 0.000 min  
 Exp R.T. : 3.168 min  
 Response: 0  
 Conc: N.D.

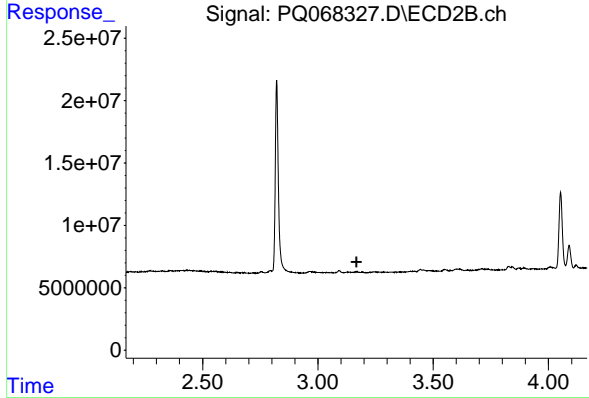




#11 AR-1232-1

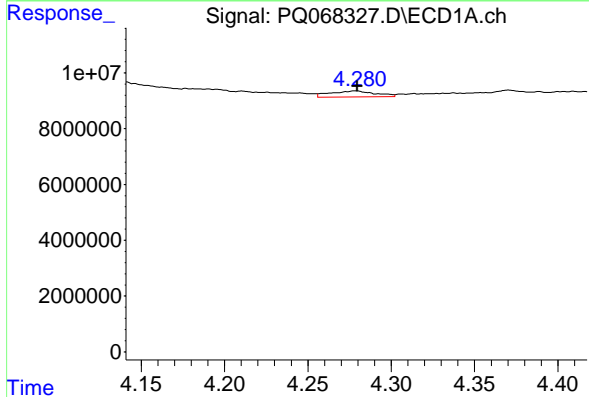
R.T.: 3.787 min  
 Delta R.T.: 0.000 min  
 Response: 598690  
 Conc: 3.63 ng/ml

Instrument :  
 ECD\_Q  
 ClientSampleId :  
 AR12543102



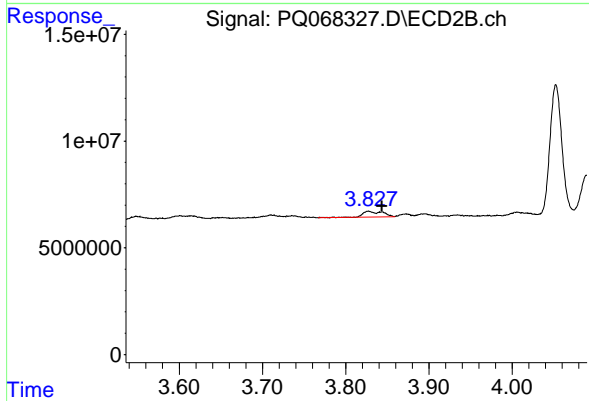
#11 AR-1232-1

R.T.: 0.000 min  
 Exp R.T. : 3.168 min  
 Response: 0  
 Conc: N.D.



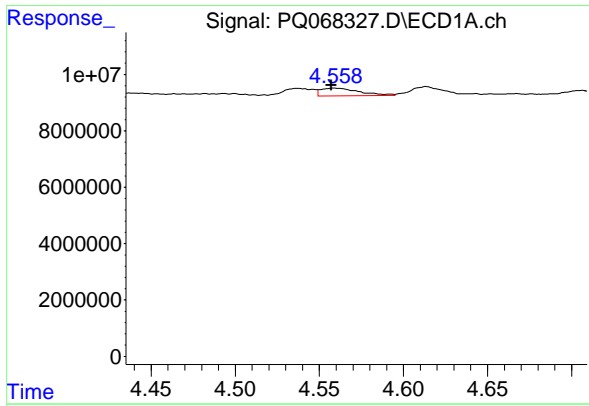
#12 AR-1232-2

R.T.: 4.279 min  
 Delta R.T.: -0.001 min  
 Response: 4041458  
 Conc: 44.50 ng/ml



#12 AR-1232-2

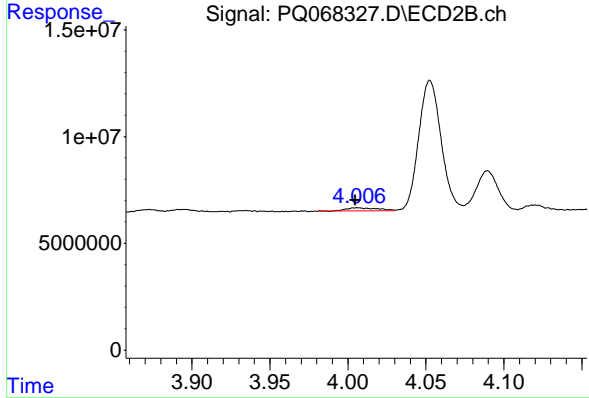
R.T.: 3.827 min  
 Delta R.T.: -0.016 min  
 Response: 4546985  
 Conc: 29.32 ng/ml



#13 AR-1232-3

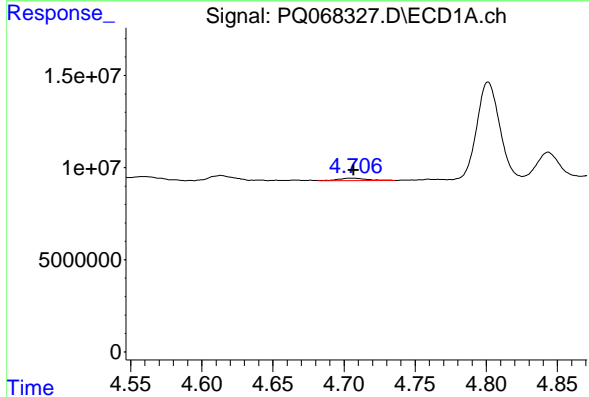
R.T.: 4.559 min  
 Delta R.T.: 0.002 min  
 Response: 4393374  
 Conc: 25.98 ng/ml

Instrument : ECD\_Q  
 ClientSampleId : AR12543102



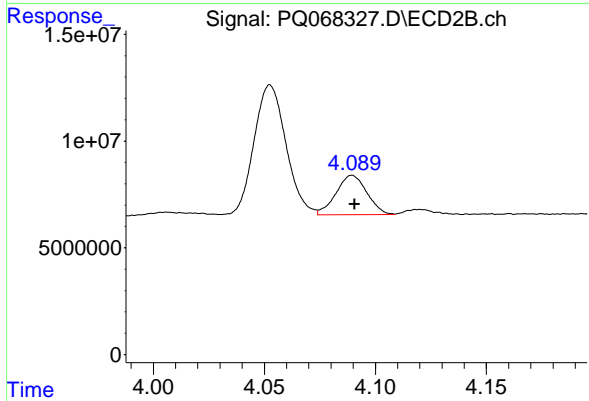
#13 AR-1232-3

R.T.: 4.006 min  
 Delta R.T.: 0.002 min  
 Response: 2066922  
 Conc: 25.42 ng/ml



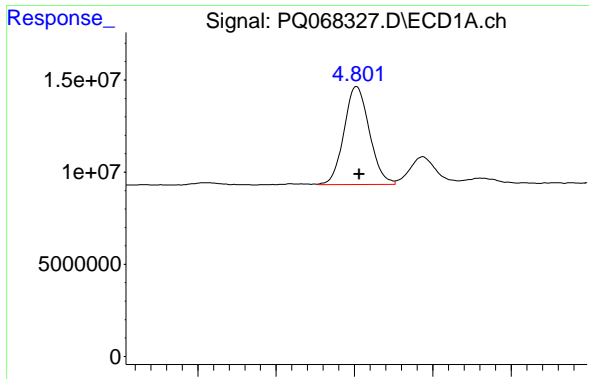
#14 AR-1232-4

R.T.: 4.706 min  
 Delta R.T.: 0.000 min  
 Response: 1956673  
 Conc: 22.65 ng/ml



#14 AR-1232-4

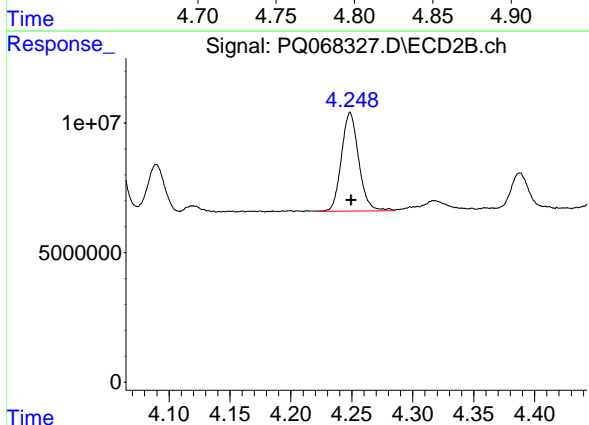
R.T.: 4.090 min  
 Delta R.T.: -0.001 min  
 Response: 17836731  
 Conc: 255.35 ng/ml



#15 AR-1232-5

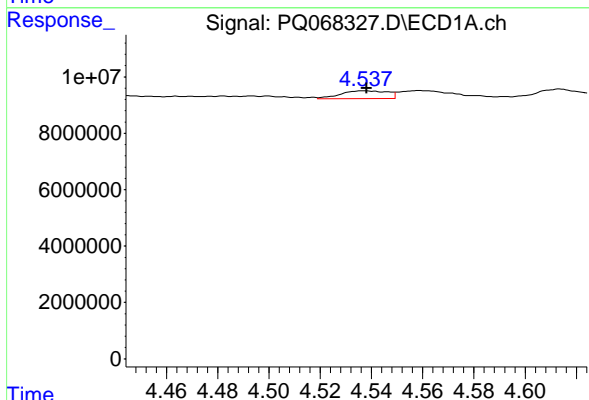
R.T.: 4.801 min  
Delta R.T.: -0.002 min  
Response: 59815041  
Conc: 1059.21 ng/ml

Instrument :  
ECD\_Q  
ClientSampleId :  
AR12543102



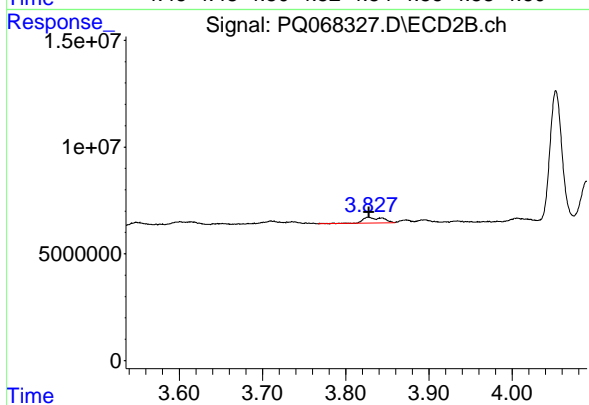
#15 AR-1232-5

R.T.: 4.249 min  
Delta R.T.: 0.000 min  
Response: 37582587  
Conc: 478.13 ng/ml



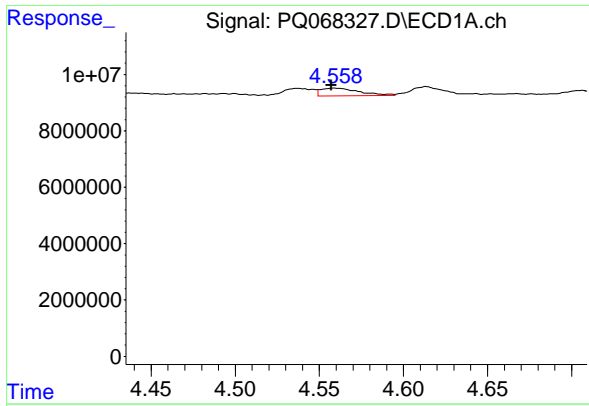
#16 AR-1242-1

R.T.: 4.537 min  
Delta R.T.: -0.001 min  
Response: 3480678  
Conc: 17.03 ng/ml



#16 AR-1242-1

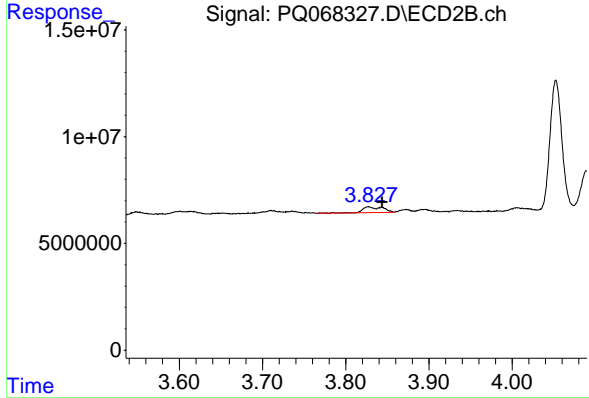
R.T.: 3.827 min  
Delta R.T.: 0.000 min  
Response: 4546985  
Conc: 23.50 ng/ml



#17 AR-1242-2

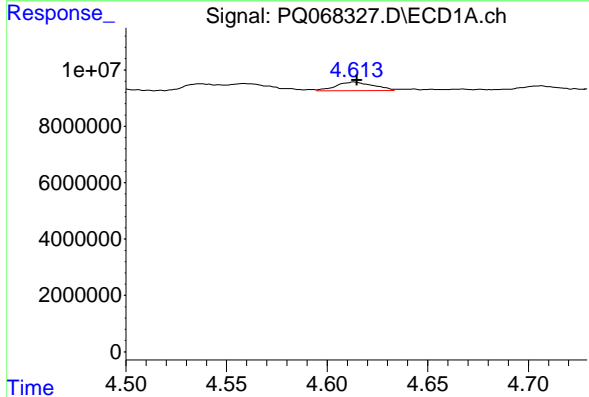
R.T.: 4.559 min  
 Delta R.T.: 0.002 min  
 Response: 4393374  
 Conc: 14.04 ng/ml

Instrument :  
 ECD\_Q  
 ClientSampleId :  
 AR12543102



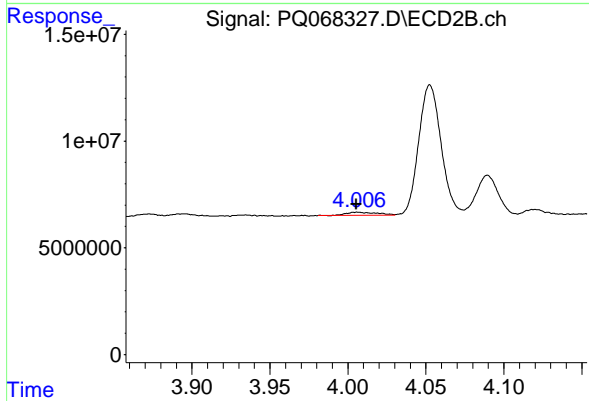
#17 AR-1242-2

R.T.: 3.827 min  
 Delta R.T.: -0.017 min  
 Response: 4546985  
 Conc: 15.65 ng/ml



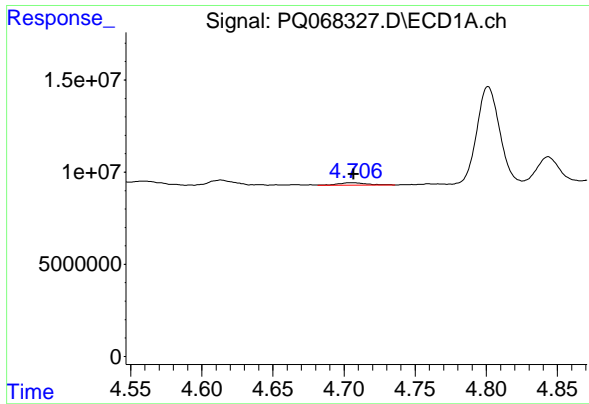
#18 AR-1242-3

R.T.: 4.614 min  
 Delta R.T.: -0.001 min  
 Response: 4055956  
 Conc: 20.73 ng/ml



#18 AR-1242-3

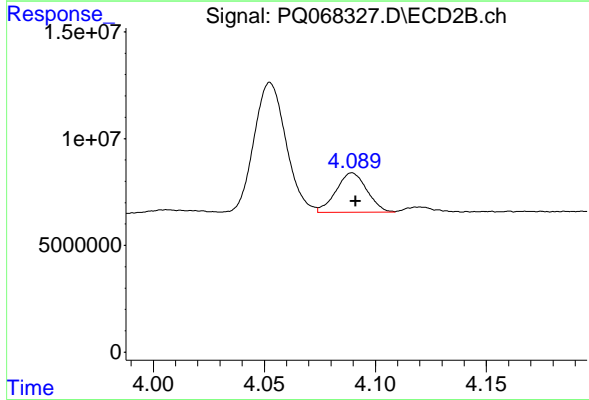
R.T.: 4.006 min  
 Delta R.T.: 0.001 min  
 Response: 2066922  
 Conc: 13.34 ng/ml



#19 AR-1242-4

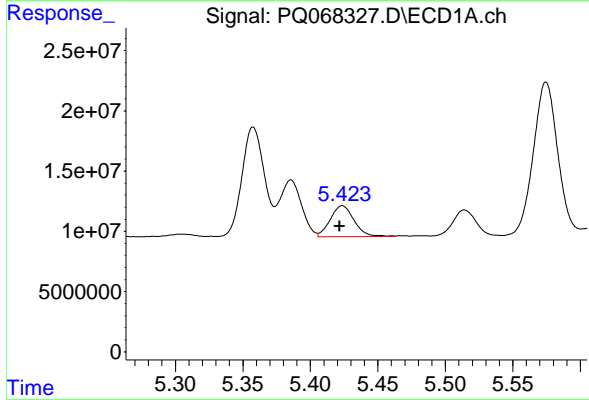
R.T.: 4.706 min  
 Delta R.T.: 0.000 min  
 Response: 1956673  
 Conc: 12.11 ng/ml

Instrument : ECD\_Q  
 ClientSampleId : AR12543102



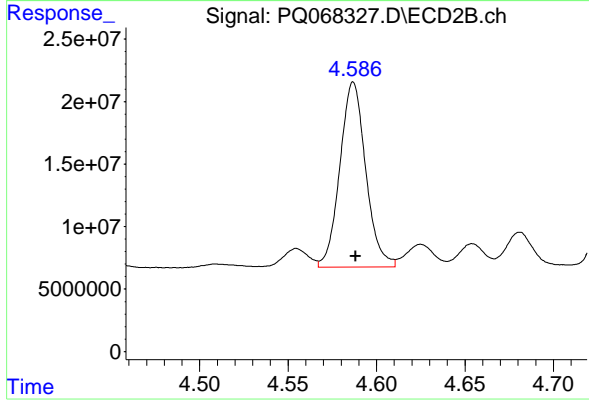
#19 AR-1242-4

R.T.: 4.090 min  
 Delta R.T.: -0.001 min  
 Response: 17836731  
 Conc: 121.91 ng/ml



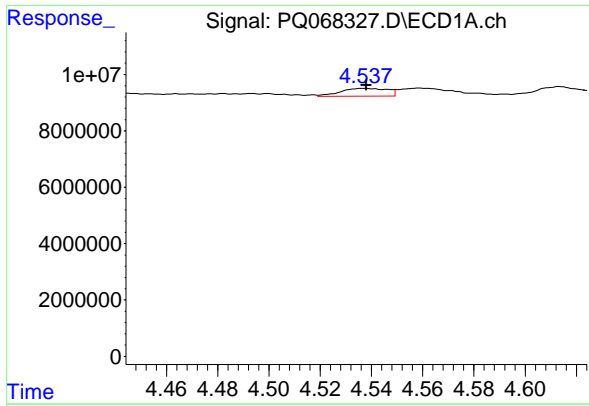
#20 AR-1242-5

R.T.: 5.424 min  
 Delta R.T.: 0.002 min  
 Response: 31267522  
 Conc: 184.94 ng/ml



#20 AR-1242-5

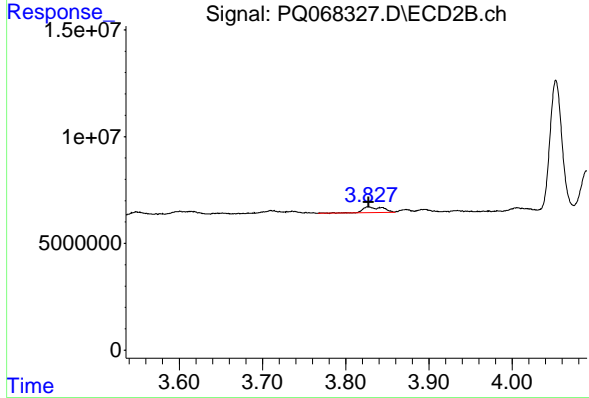
R.T.: 4.587 min  
 Delta R.T.: -0.001 min  
 Response: 150906170  
 Conc: 780.64 ng/ml



#21 AR-1248-1

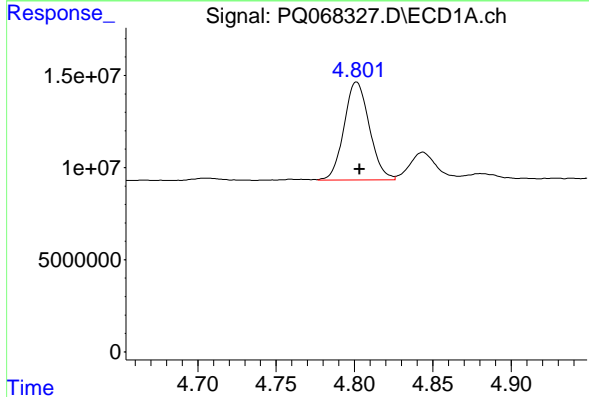
R.T.: 4.537 min  
 Delta R.T.: -0.001 min  
 Response: 3480678  
 Conc: 22.61 ng/ml

Instrument :  
 ECD\_Q  
 ClientSampleId :  
 AR12543102



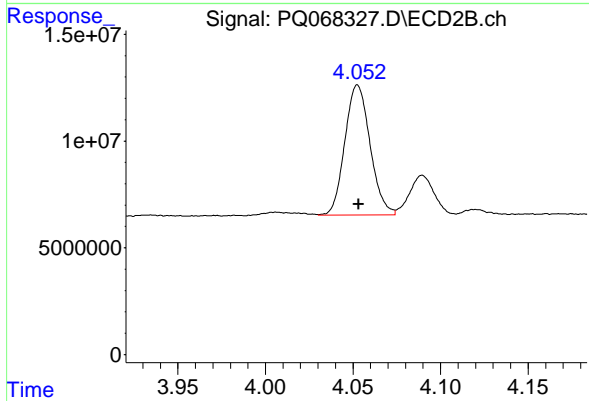
#21 AR-1248-1

R.T.: 3.827 min  
 Delta R.T.: 0.000 min  
 Response: 4546985  
 Conc: 31.87 ng/ml



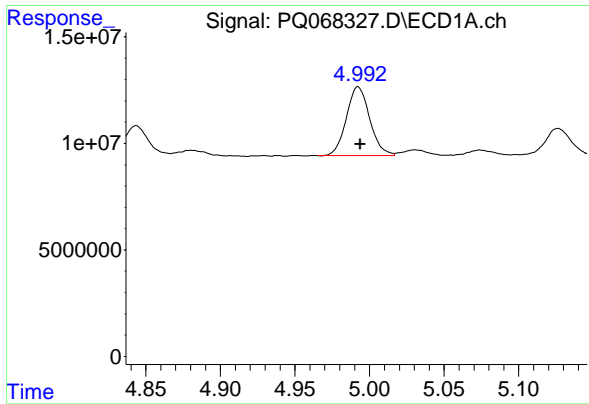
#22 AR-1248-2

R.T.: 4.801 min  
 Delta R.T.: -0.002 min  
 Response: 59815041  
 Conc: 284.64 ng/ml



#22 AR-1248-2

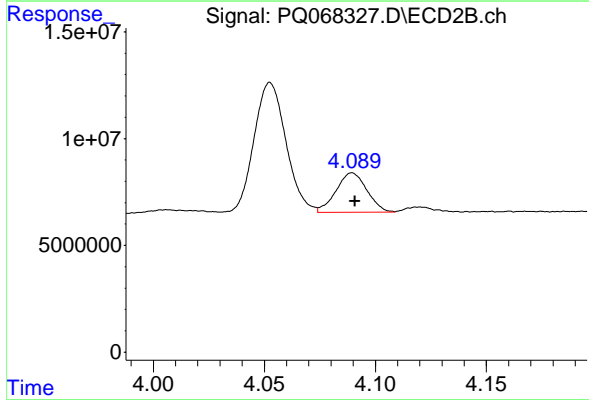
R.T.: 4.053 min  
 Delta R.T.: 0.000 min  
 Response: 61083220  
 Conc: 276.17 ng/ml



#23 AR-1248-3

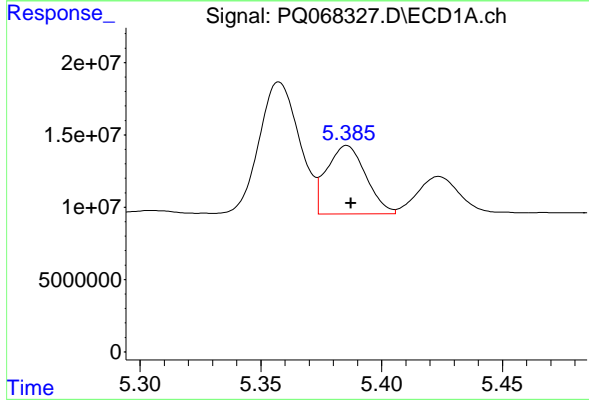
R.T.: 4.992 min  
 Delta R.T.: -0.001 min  
 Response: 35149149  
 Conc: 139.31 ng/ml

Instrument :  
 ECD\_Q  
 ClientSampleId :  
 AR12543102



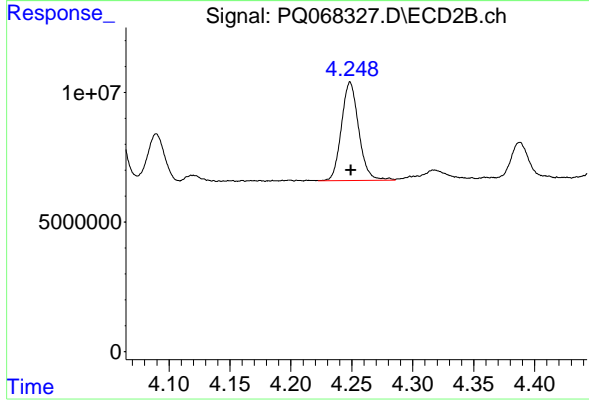
#23 AR-1248-3

R.T.: 4.090 min  
 Delta R.T.: -0.001 min  
 Response: 17836731  
 Conc: 83.06 ng/ml



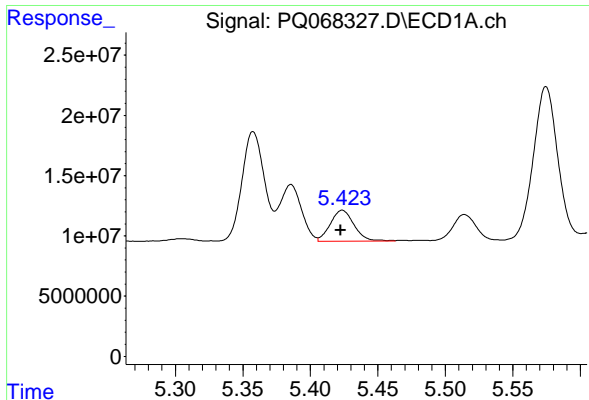
#24 AR-1248-4

R.T.: 5.386 min  
 Delta R.T.: -0.002 min  
 Response: 52987493  
 Conc: 188.44 ng/ml



#24 AR-1248-4

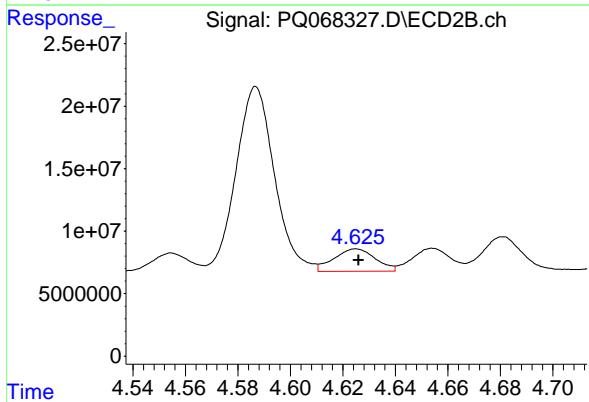
R.T.: 4.249 min  
 Delta R.T.: 0.000 min  
 Response: 37582587  
 Conc: 142.31 ng/ml



#25 AR-1248-5

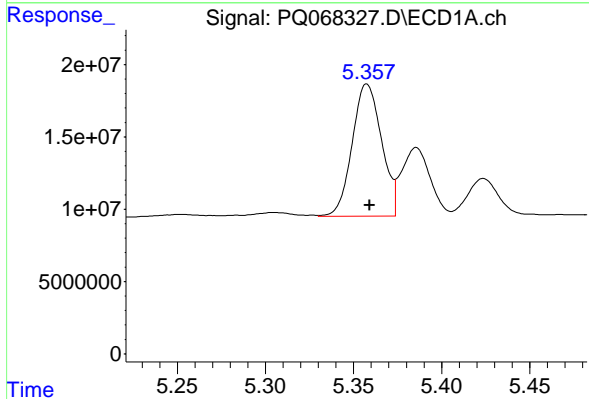
R.T.: 5.424 min  
Delta R.T.: 0.001 min  
Response: 31267522  
Conc: 110.77 ng/ml

Instrument :  
ECD\_Q  
ClientSampleId :  
AR12543102



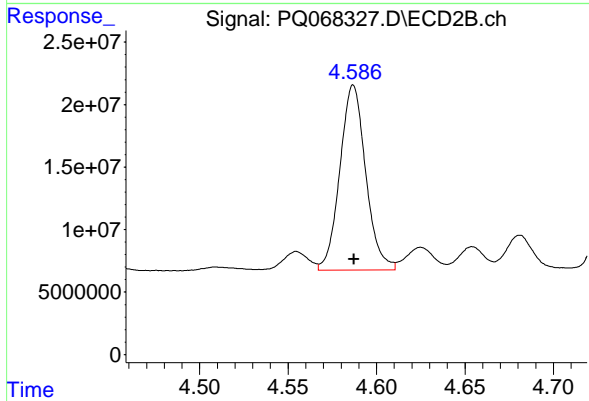
#25 AR-1248-5

R.T.: 4.625 min  
Delta R.T.: 0.000 min  
Response: 19823909  
Conc: 74.93 ng/ml



#26 AR-1254-1

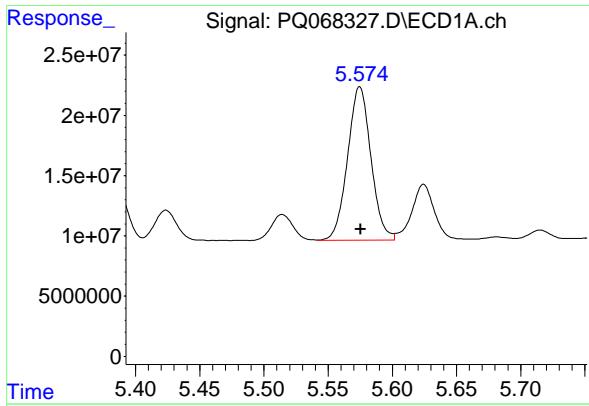
R.T.: 5.358 min  
Delta R.T.: -0.002 min  
Response: 105940140  
Conc: 382.94 ng/ml



#26 AR-1254-1

R.T.: 4.587 min  
Delta R.T.: 0.000 min  
Response: 150906170  
Conc: 384.06 ng/ml

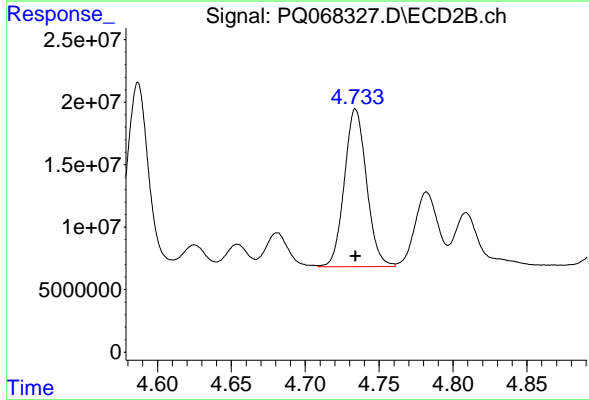




#27 AR-1254-2

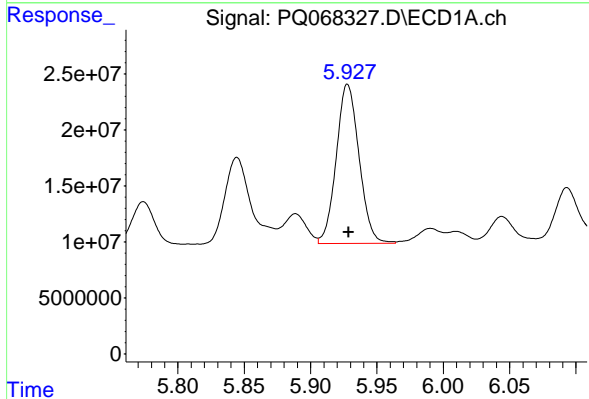
R.T.: 5.575 min  
 Delta R.T.: 0.000 min  
 Response: 161216023  
 Conc: 377.53 ng/ml

Instrument :  
 ECD\_Q  
 ClientSampleId :  
 AR12543102



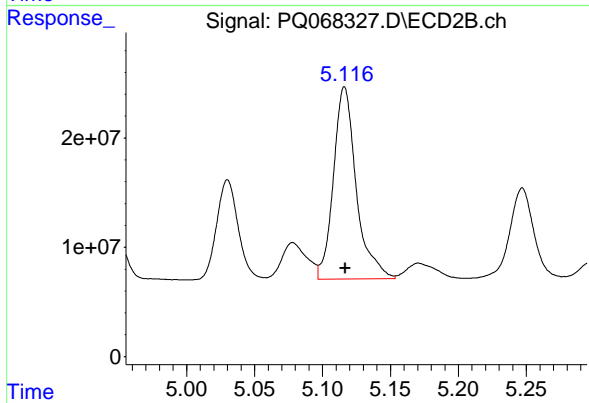
#27 AR-1254-2

R.T.: 4.734 min  
 Delta R.T.: 0.000 min  
 Response: 131630738  
 Conc: 383.59 ng/ml



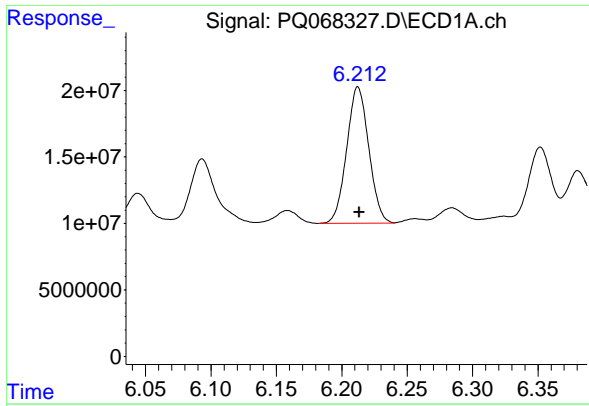
#28 AR-1254-3

R.T.: 5.928 min  
 Delta R.T.: 0.000 min  
 Response: 170578121  
 Conc: 379.79 ng/ml



#28 AR-1254-3

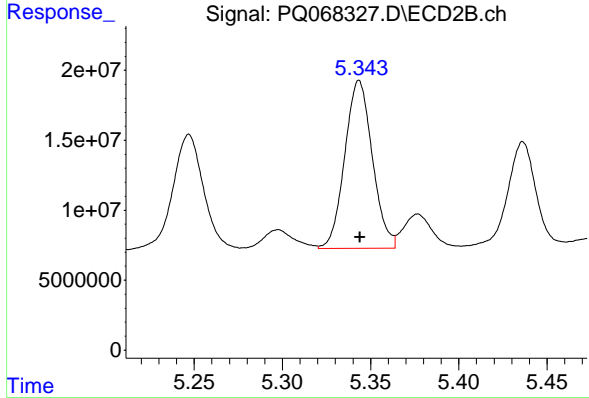
R.T.: 5.116 min  
 Delta R.T.: 0.000 min  
 Response: 206105412  
 Conc: 380.77 ng/ml



#29 AR-1254-4

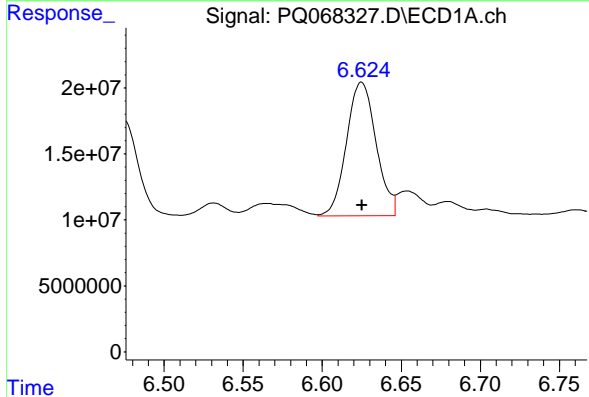
R.T.: 6.212 min  
 Delta R.T.: -0.001 min  
 Response: 120432895  
 Conc: 376.70 ng/ml

Instrument :  
 ECD\_Q  
 ClientSampleId :  
 AR12543102



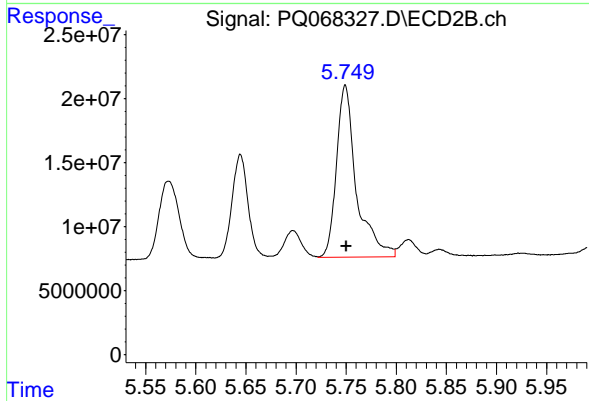
#29 AR-1254-4

R.T.: 5.343 min  
 Delta R.T.: 0.000 min  
 Response: 130833669  
 Conc: 387.88 ng/ml



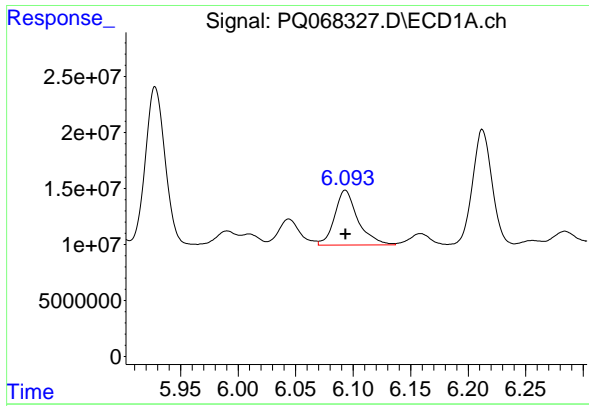
#30 AR-1254-5

R.T.: 6.625 min  
 Delta R.T.: 0.000 min  
 Response: 132210461  
 Conc: 381.32 ng/ml



#30 AR-1254-5

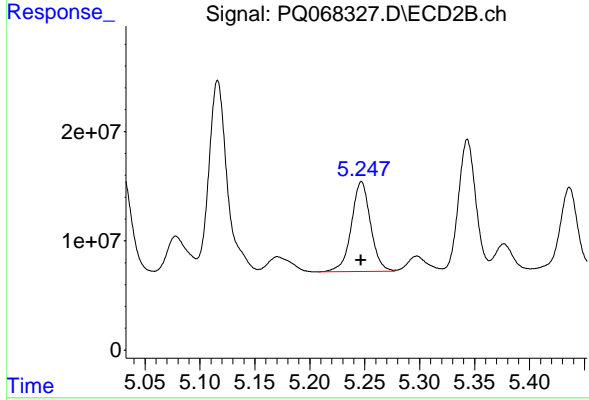
R.T.: 5.749 min  
 Delta R.T.: 0.000 min  
 Response: 185904562  
 Conc: 381.55 ng/ml



#31 AR-1260-1

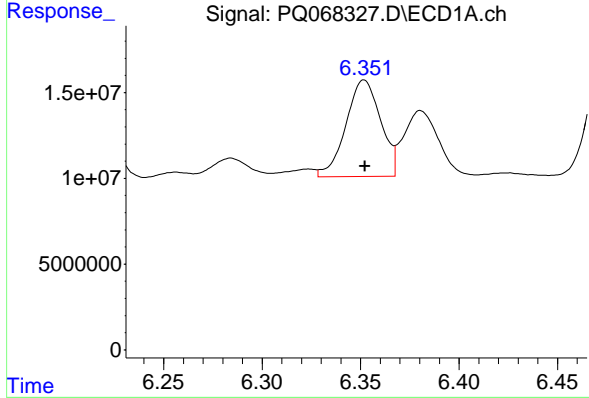
R.T.: 6.093 min  
 Delta R.T.: 0.000 min  
 Response: 68687057  
 Conc: 208.14 ng/ml

Instrument :  
 ECD\_Q  
 ClientSampleId :  
 AR12543102



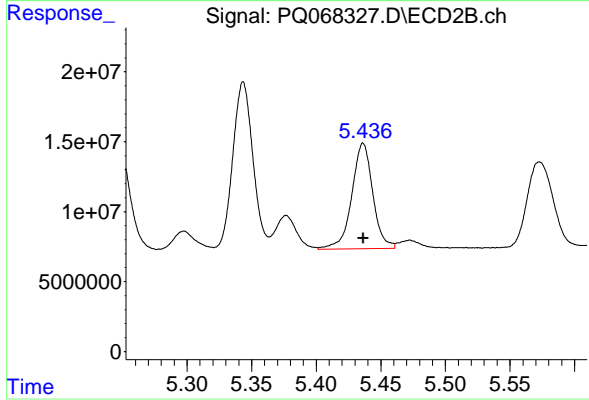
#31 AR-1260-1

R.T.: 5.247 min  
 Delta R.T.: 0.000 min  
 Response: 99734763  
 Conc: 274.22 ng/ml



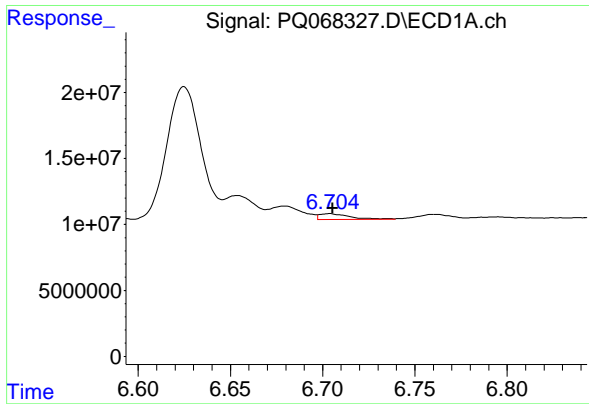
#32 AR-1260-2

R.T.: 6.352 min  
 Delta R.T.: 0.000 min  
 Response: 69183130  
 Conc: 183.60 ng/ml



#32 AR-1260-2

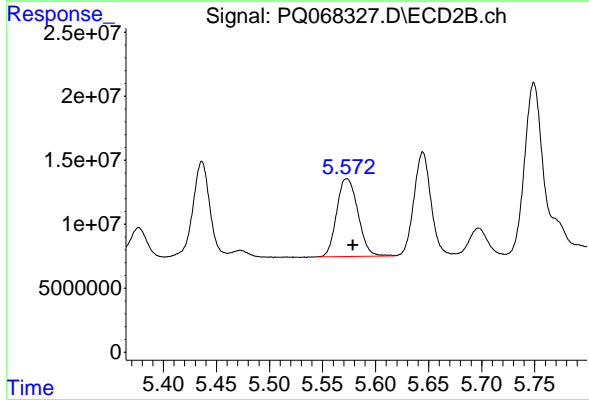
R.T.: 5.436 min  
 Delta R.T.: 0.000 min  
 Response: 85644446  
 Conc: 195.13 ng/ml



#33 AR-1260-3

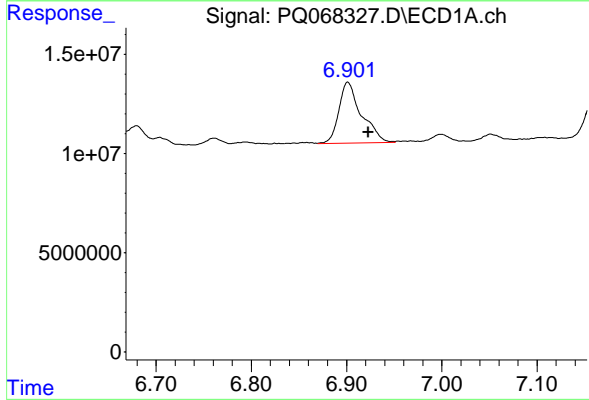
R.T.: 6.704 min  
 Delta R.T.: -0.002 min  
 Response: 5067475  
 Conc: 18.33 ng/ml

Instrument :  
 ECD\_Q  
 ClientSampleId :  
 AR12543102



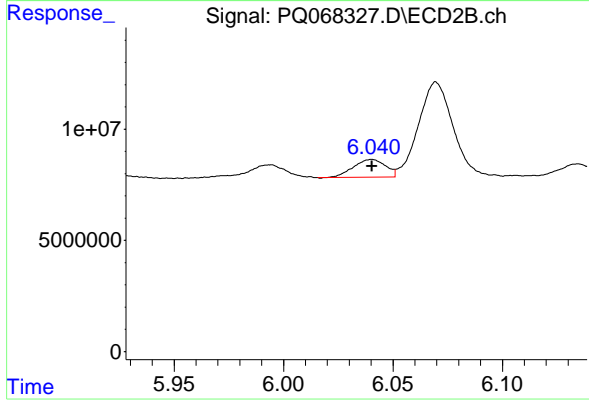
#33 AR-1260-3

R.T.: 5.573 min  
 Delta R.T.: -0.006 min  
 Response: 84766149  
 Conc: 196.66 ng/ml



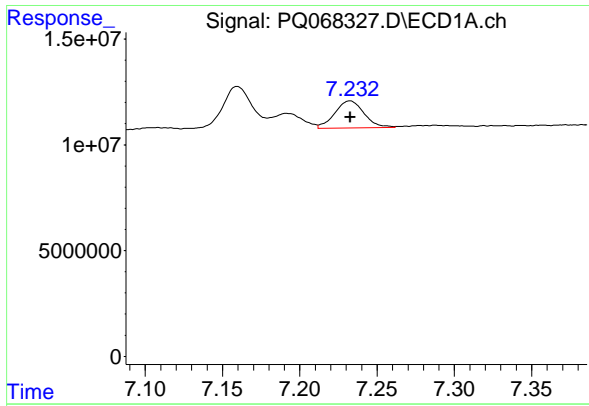
#34 AR-1260-4

R.T.: 6.901 min  
 Delta R.T.: -0.021 min  
 Response: 50402934  
 Conc: 165.08 ng/ml



#34 AR-1260-4

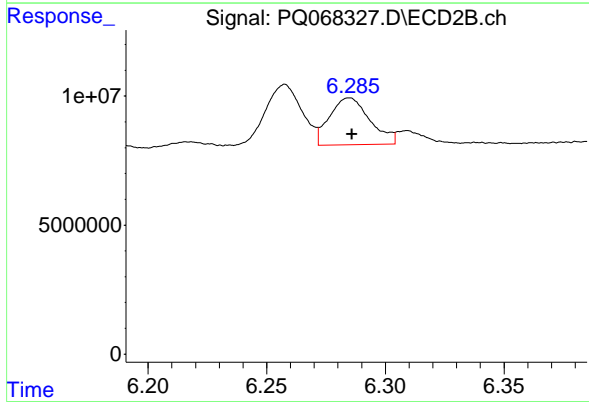
R.T.: 6.040 min  
 Delta R.T.: 0.000 min  
 Response: 8202411  
 Conc: 24.15 ng/ml



#35 AR-1260-5

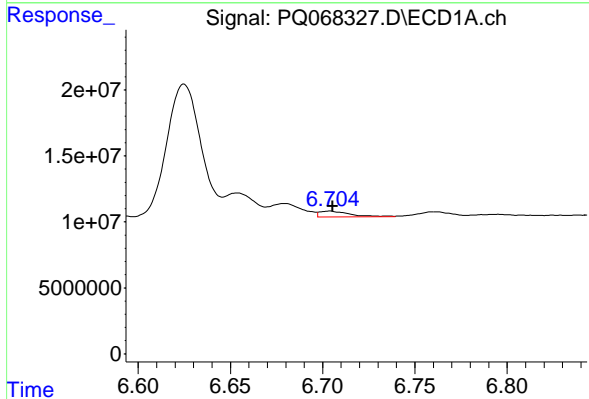
R.T.: 7.232 min  
 Delta R.T.: 0.000 min  
 Response: 16915826  
 Conc: 28.98 ng/ml

Instrument : ECD\_Q  
 ClientSampleId : AR12543102



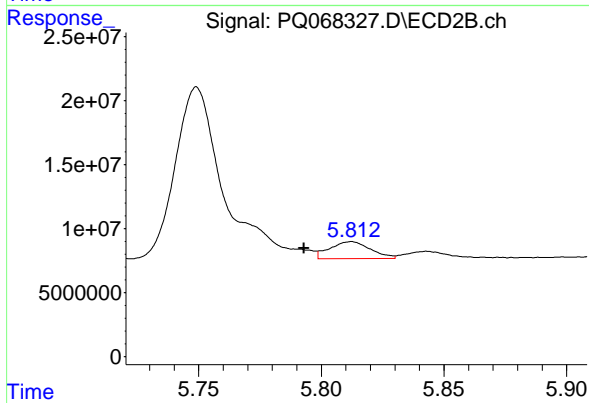
#35 AR-1260-5

R.T.: 6.285 min  
 Delta R.T.: -0.001 min  
 Response: 21623039  
 Conc: 27.24 ng/ml



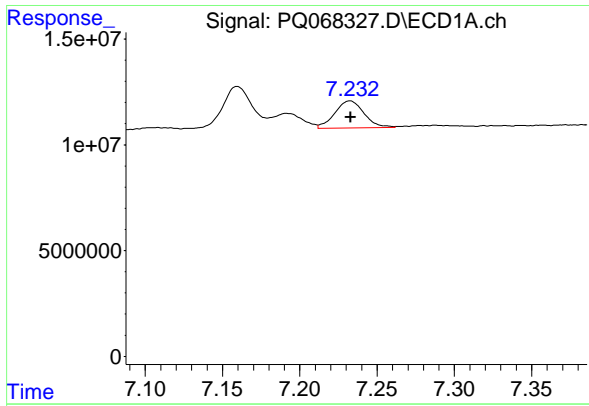
#36 AR-1262-1

R.T.: 6.704 min  
 Delta R.T.: -0.002 min  
 Response: 5067475  
 Conc: 11.99 ng/ml



#36 AR-1262-1

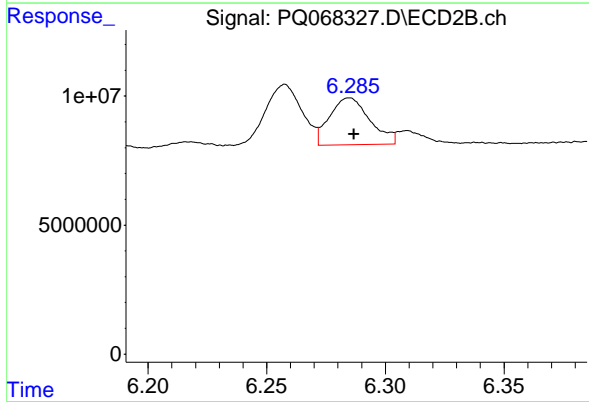
R.T.: 5.812 min  
 Delta R.T.: 0.019 min  
 Response: 15191041  
 Conc: 29.52 ng/ml



#37 AR-1262-2

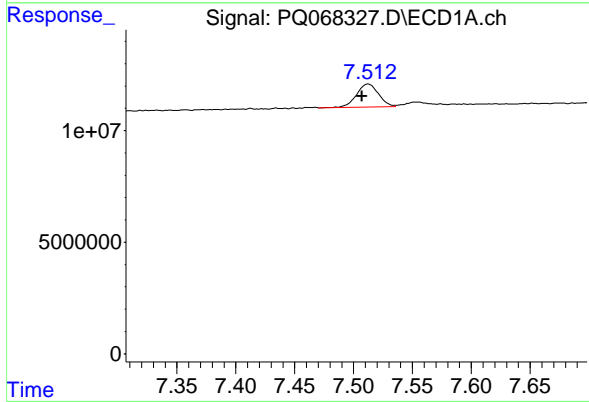
R.T.: 7.232 min  
 Delta R.T.: 0.000 min  
 Response: 16915826  
 Conc: 24.77 ng/ml

Instrument :  
 ECD\_Q  
 ClientSampleId :  
 AR12543102



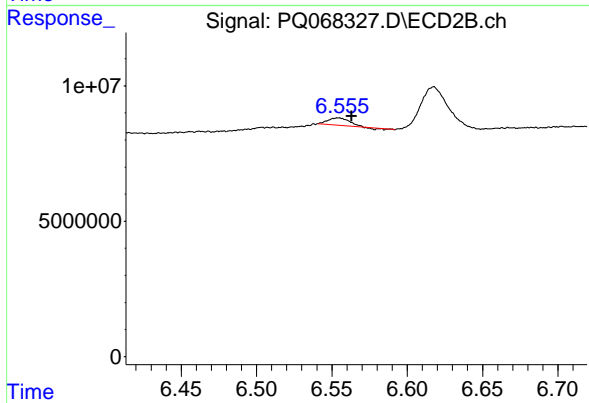
#37 AR-1262-2

R.T.: 6.285 min  
 Delta R.T.: -0.002 min  
 Response: 21623039  
 Conc: 24.01 ng/ml



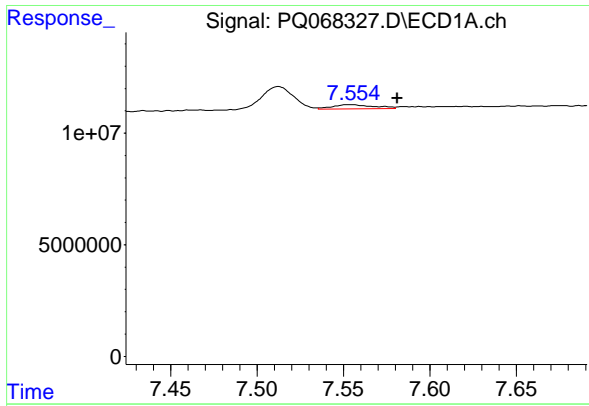
#38 AR-1262-3

R.T.: 7.512 min  
 Delta R.T.: 0.005 min  
 Response: 13345800  
 Conc: 30.15 ng/ml



#38 AR-1262-3

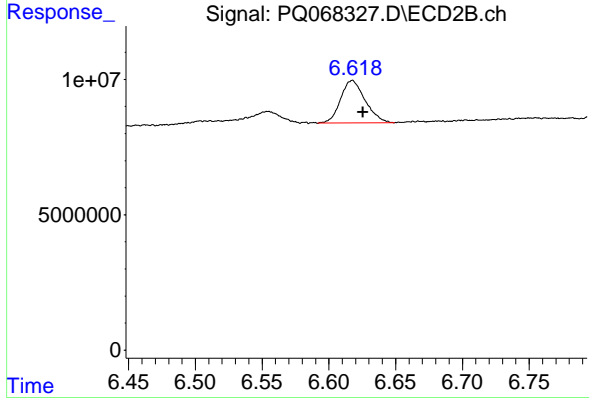
R.T.: 6.554 min  
 Delta R.T.: -0.009 min  
 Response: 2605376  
 Conc: 7.59 ng/ml



#39 AR-1262-4

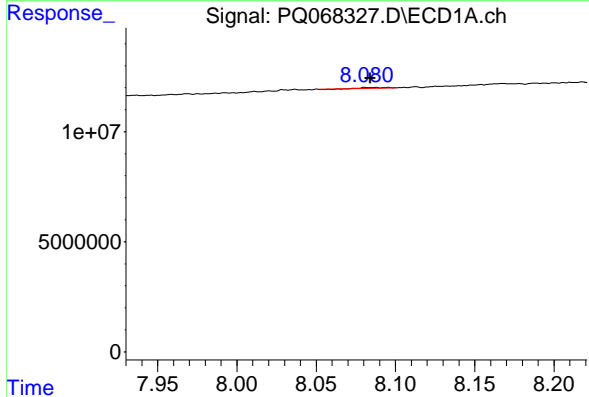
R.T.: 7.554 min  
 Delta R.T.: -0.027 min  
 Response: 3145998  
 Conc: 9.18 ng/ml

Instrument :  
 ECD\_Q  
 ClientSampleId :  
 AR12543102



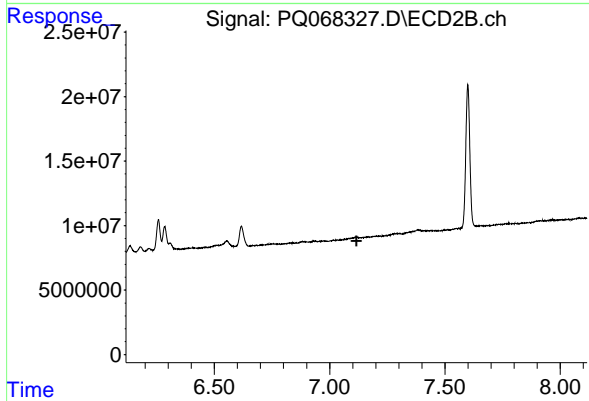
#39 AR-1262-4

R.T.: 6.617 min  
 Delta R.T.: -0.008 min  
 Response: 20136191  
 Conc: 30.43 ng/ml



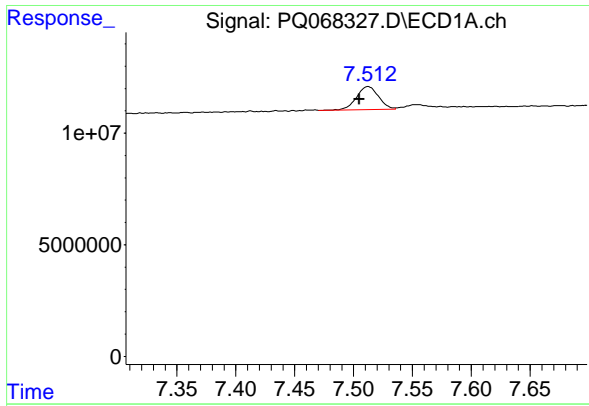
#40 AR-1262-5

R.T.: 8.088 min  
 Delta R.T.: 0.004 min  
 Response: 321066  
 Conc: 1.53 ng/ml



#40 AR-1262-5

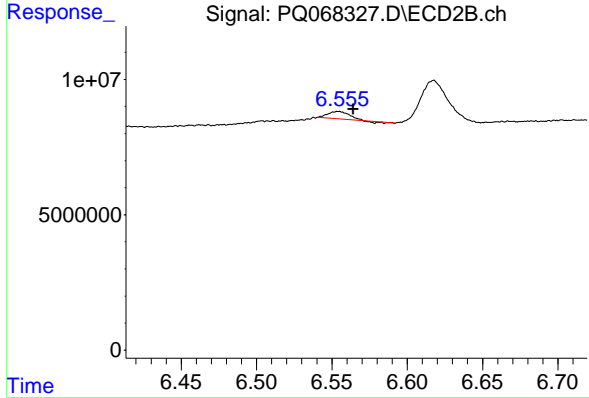
R.T.: 0.000 min  
 Exp R.T. : 7.116 min  
 Response: 0  
 Conc: N.D.



#41 AR-1268-1

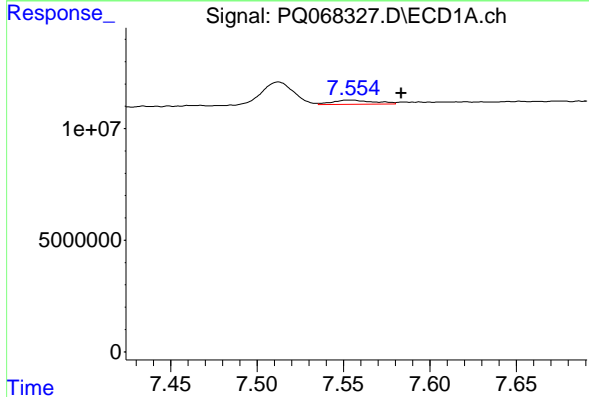
R.T.: 7.512 min  
 Delta R.T.: 0.007 min  
 Response: 13345800  
 Conc: 17.37 ng/ml

Instrument :  
 ECD\_Q  
 ClientSampleId :  
 AR12543102



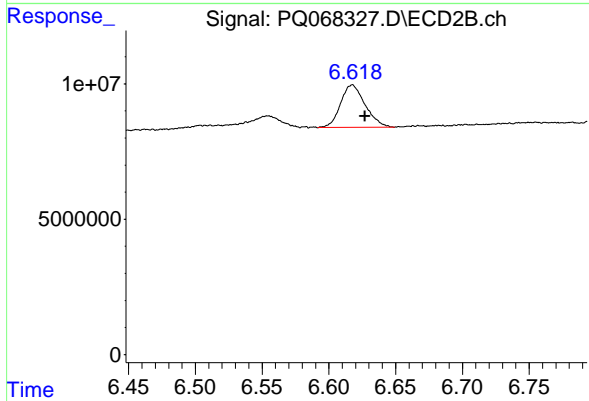
#41 AR-1268-1

R.T.: 6.554 min  
 Delta R.T.: -0.010 min  
 Response: 2605376  
 Conc: 2.62 ng/ml



#42 AR-1268-2

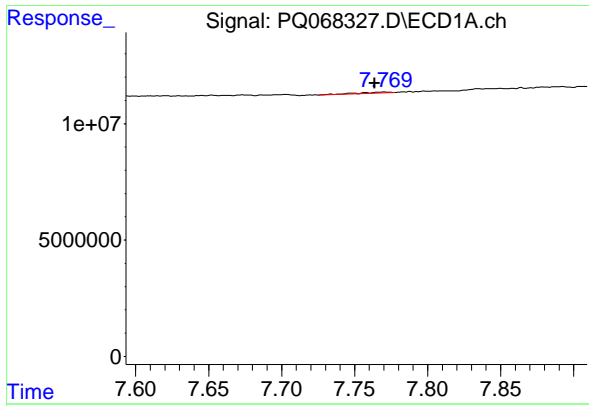
R.T.: 7.554 min  
 Delta R.T.: -0.029 min  
 Response: 3145998  
 Conc: 4.38 ng/ml



#42 AR-1268-2

R.T.: 6.617 min  
 Delta R.T.: -0.010 min  
 Response: 20136191  
 Conc: 21.58 ng/ml

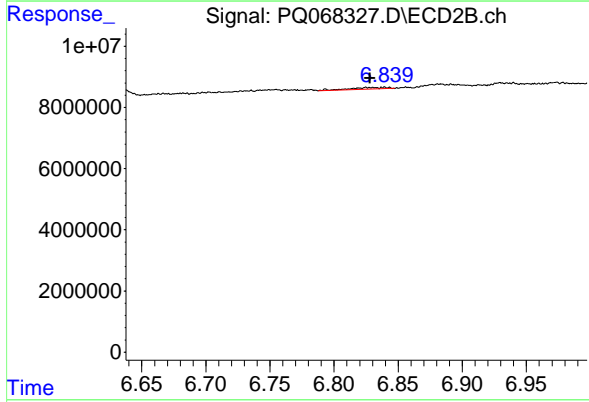




#43 AR-1268-3

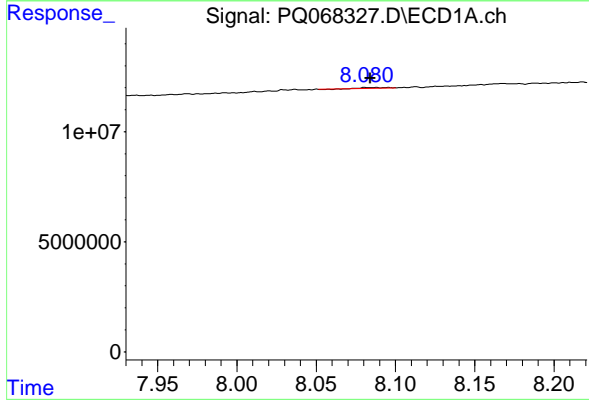
R.T.: 7.770 min  
 Delta R.T.: 0.007 min  
 Response: 693433  
 Conc: 1.20 ng/ml

Instrument :  
 ECD\_Q  
 ClientSampleId :  
 AR12543102



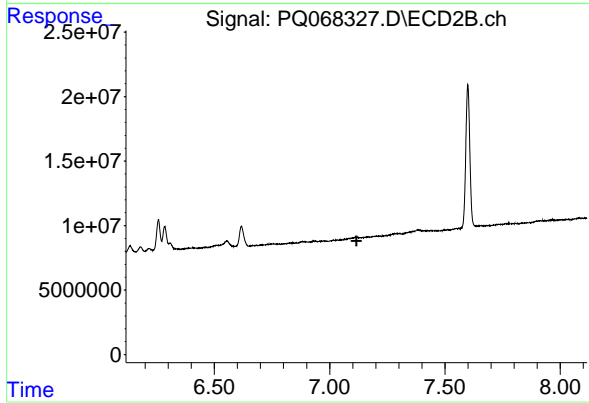
#43 AR-1268-3

R.T.: 6.831 min  
 Delta R.T.: 0.003 min  
 Response: 1033596  
 Conc: 1.27 ng/ml



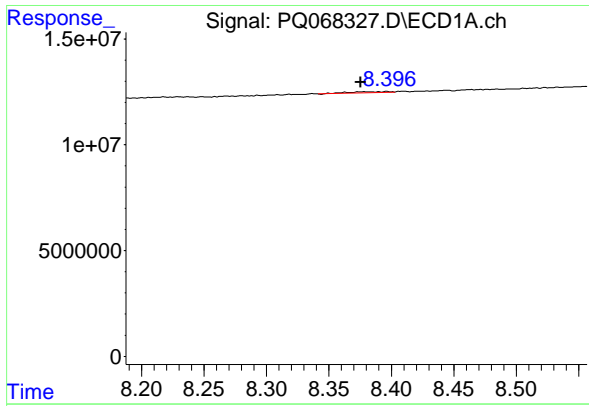
#44 AR-1268-4

R.T.: 8.088 min  
 Delta R.T.: 0.003 min  
 Response: 321066  
 Conc: 1.39 ng/ml



#44 AR-1268-4

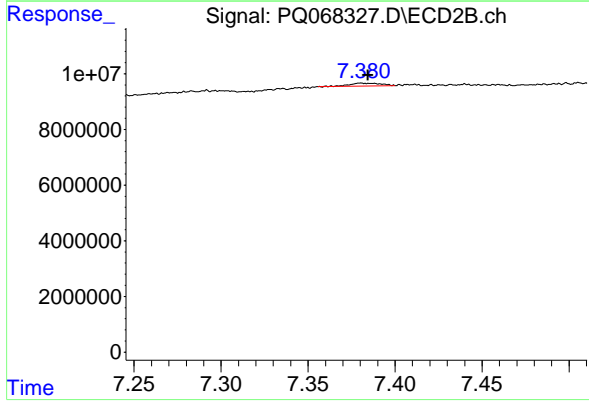
R.T.: 0.000 min  
 Exp R.T. : 7.116 min  
 Response: 0  
 Conc: N.D.



#45 AR-1268-5

R.T.: 8.397 min  
 Delta R.T.: 0.021 min  
 Response: 1032547  
 Conc: 0.64 ng/ml

Instrument :  
 ECD\_Q  
 ClientSampleId :  
 AR12543102



#45 AR-1268-5

R.T.: 7.381 min  
 Delta R.T.: -0.004 min  
 Response: 1266910  
 Conc: 0.52 ng/ml