

Data Path : Z:\pestpcbsrv\HPCHEM1\ECD_Q\Data\PQ090120\
 Data File : PQ049660.D
 Signal(s) : Signal #1: ECD1A.ch Signal #2: ECD2B.ch
 Acq On : 01 Sep 2020 18:56
 Operator : DD\AJ
 Sample : L3848-01
 Misc :
 ALS Vial : 24 Sample Multiplier: 1

Instrument :
 ECD_Q
 ClientSampleId :
 LINDEN-BH-03-C

Integration File signal 1: autoint1.e
 Integration File signal 2: autoint2.e
 Quant Time: Sep 02 06:34:06 2020
 Quant Method : Z:\pestpcbsrv\HPCHEM1\ECD_Q\Method\PQ082820.M
 Quant Title : GC EXTRACTABLES
 QLast Update : Fri Aug 28 17:31:13 2020
 Response via : Initial Calibration
 Integrator: ChemStation

Volume Inj. : 2 µl
 Signal #1 Phase : ZB-MR1 Signal #2 Phase: ZB-MR2
 Signal #1 Info : 30Mx0.32mmx 0.50µ Signal #2 Info : 30M x 0.32mm x 0.25µm

Compound	RT#1	RT#2	Resp#1	Resp#2	ng/ml	ng/ml

System Monitoring Compounds						
1) SA Tetrachlo...	5.239	4.283	231.4E6	125.2E6	26.503	22.155
2) SA Decachlor...	11.452	9.637	211.7E6	104.2E6	21.733	16.655

Target Compounds

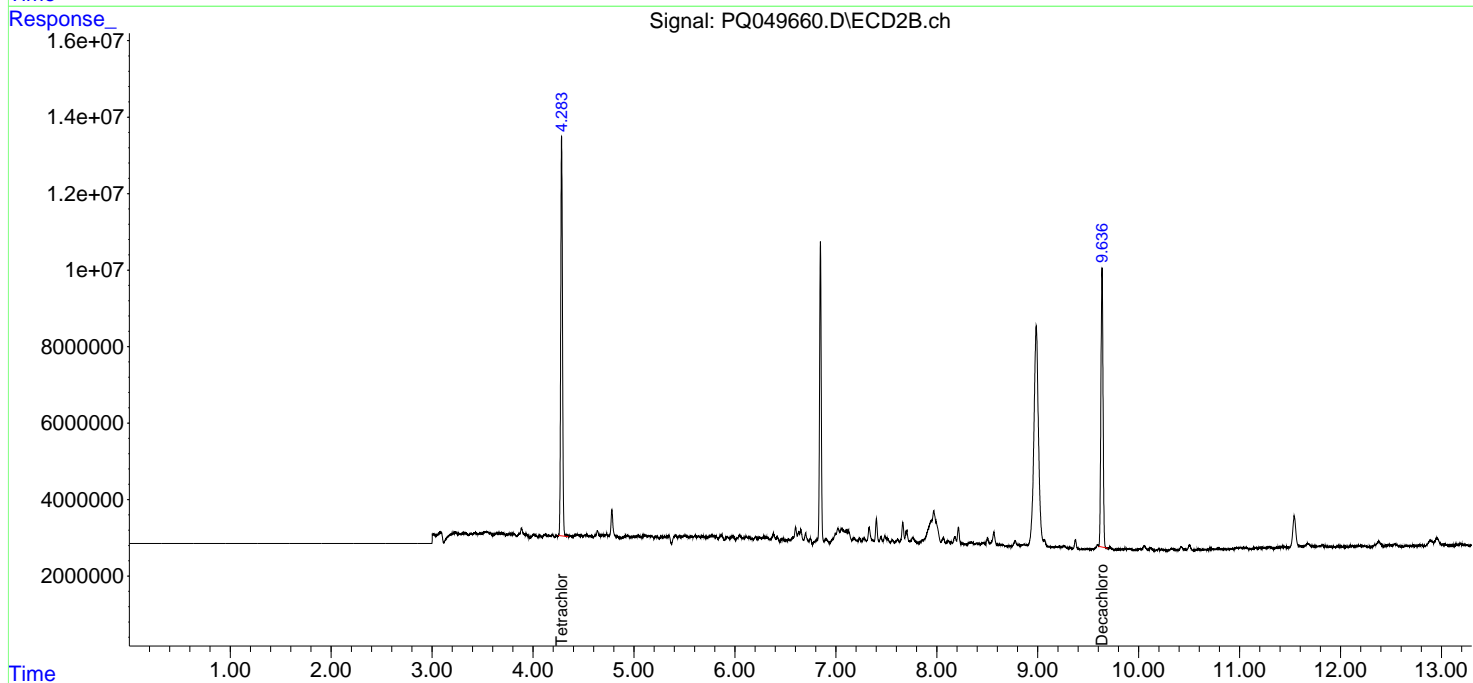
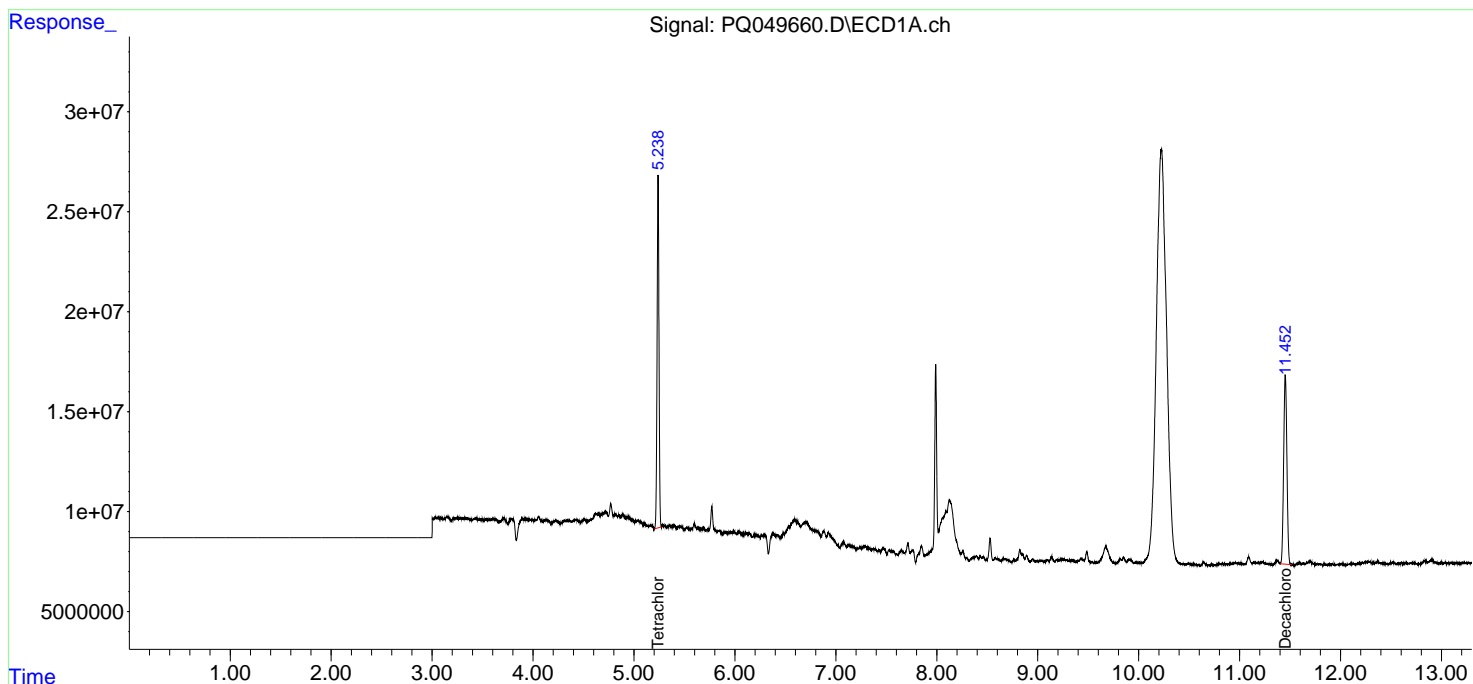
(f)=RT Delta > 1/2 Window (#)=Amounts differ by > 25% (m)=manual int.

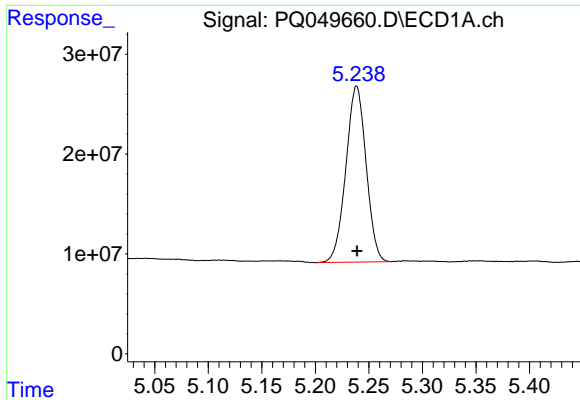
Data Path : Z:\pestpcbsrv\HPCHEM1\ECD_Q\Data\PQ090120\
 Data File : PQ049660.D
 Signal(s) : Signal #1: ECD1A.ch Signal #2: ECD2B.ch
 Acq On : 01 Sep 2020 18:56
 Operator : DD\AJ
 Sample : L3848-01
 Misc :
 ALS Vial : 24 Sample Multiplier: 1

Instrument :
 ECD_Q
 ClientSampleId :
 LINDEN-BH-03-C

Integration File signal 1: autoint1.e
 Integration File signal 2: autoint2.e
 Quant Time: Sep 02 06:34:06 2020
 Quant Method : Z:\pestpcbsrv\HPCHEM1\ECD_Q\Method\PQ082820.M
 Quant Title : GC EXTRACTABLES
 QLast Update : Fri Aug 28 17:31:13 2020
 Response via : Initial Calibration
 Integrator: ChemStation

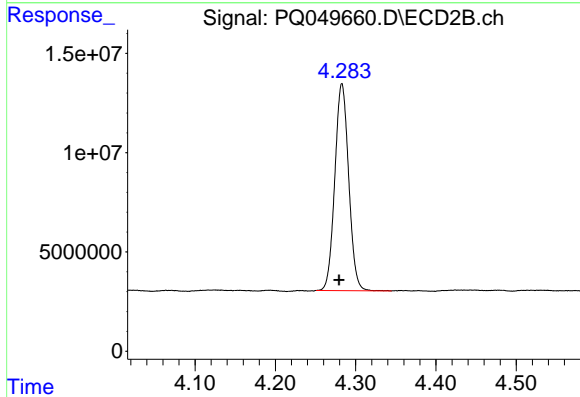
Volume Inj. : 2 µl
 Signal #1 Phase : ZB-MR1 Signal #2 Phase: ZB-MR2
 Signal #1 Info : 30Mx0.32mmx 0.50µ Signal #2 Info : 30M x 0.32mm x 0.25µm



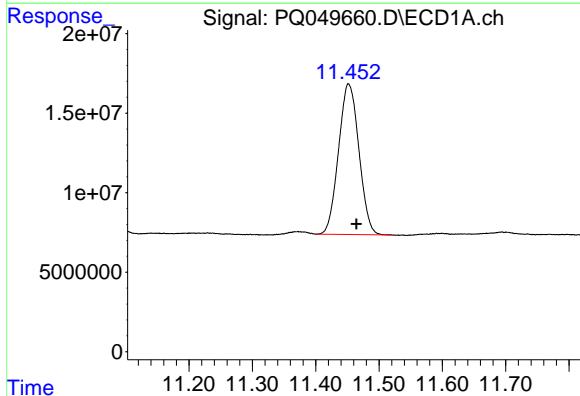


#1 Tetrachloro-m-xylene
 R.T.: 5.239 min
 Delta R.T.: 0.000 min
 Response: 231438329
 Conc: 26.50 ng/ml

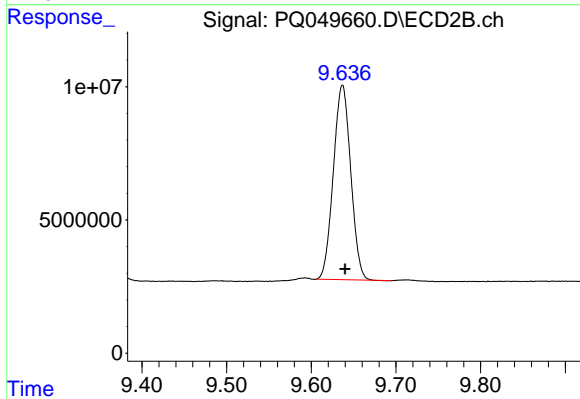
Instrument :
 ECD_Q
 ClientSampleId :
 LINDEN-BH-03-C



#1 Tetrachloro-m-xylene
 R.T.: 4.283 min
 Delta R.T.: 0.004 min
 Response: 125176265
 Conc: 22.16 ng/ml



#2 Decachlorobiphenyl
 R.T.: 11.452 min
 Delta R.T.: -0.012 min
 Response: 211681286
 Conc: 21.73 ng/ml



#2 Decachlorobiphenyl
 R.T.: 9.637 min
 Delta R.T.: -0.003 min
 Response: 104184315
 Conc: 16.65 ng/ml