

Data Path : Z:\pestpcbsrv\HPCHEM1\ECD\_Q\Data\PQ090518\  
 Data File : PQ031671.D  
 Signal(s) : Signal #1: ECD1A.ch Signal #2: ECD2B.ch  
 Acq On : 05 Sep 2018 13:34  
 Operator : SM\SJ  
 Sample : J4739-18  
 Misc :  
 ALS Vial : 9 Sample Multiplier: 1

Instrument :  
 ECD\_Q  
 ClientSampleId :  
 AOC14-02-B

Integration File signal 1: autoint1.e  
 Integration File signal 2: autoint2.e  
 Quant Time: Sep 06 00:51:50 2018  
 Quant Method : Z:\pestpcbsrv\HPCHEM1\ECD\_Q\Method\PQ090118.M  
 Quant Title : GC EXTRACTABLES  
 QLast Update : Fri Aug 31 04:27:04 2018  
 Response via : Initial Calibration  
 Integrator: ChemStation

Volume Inj. : 2 µl  
 Signal #1 Phase : ZB-MR1 Signal #2 Phase: ZB-MR2  
 Signal #1 Info : 30Mx0.32mmx 0.50µ Signal #2 Info : 30M x 0.32mm x 0.25µm

Compound	RT#1	RT#2	Resp#1	Resp#2	ng/ml	ng/ml
-----						
System Monitoring Compounds						
1) SA Tetrachlo...	4.610	3.887	40527758	33700984	27.774	29.577
2) SA Decachlor...	10.472	8.969	45117706	46678212	21.041	22.273
Target Compounds						
26) L6 AR-1254-1	6.862	5.939	338.9E6	237.9E6	2336.510	2383.497
27) L6 AR-1254-2	7.145	6.257	220.5E6	201.9E6	2452.413	2302.033
28) L6 AR-1254-3	7.230	6.574	432.1E6	260.1E6	2636.518	2251.302
29) L6 AR-1254-4	7.516	6.892	274.9E6	193.3E6	2247.759	2328.130
30) L6 AR-1254-5	7.791	6.993	230.5E6	500.6E6	2429.133	3010.926
-----						

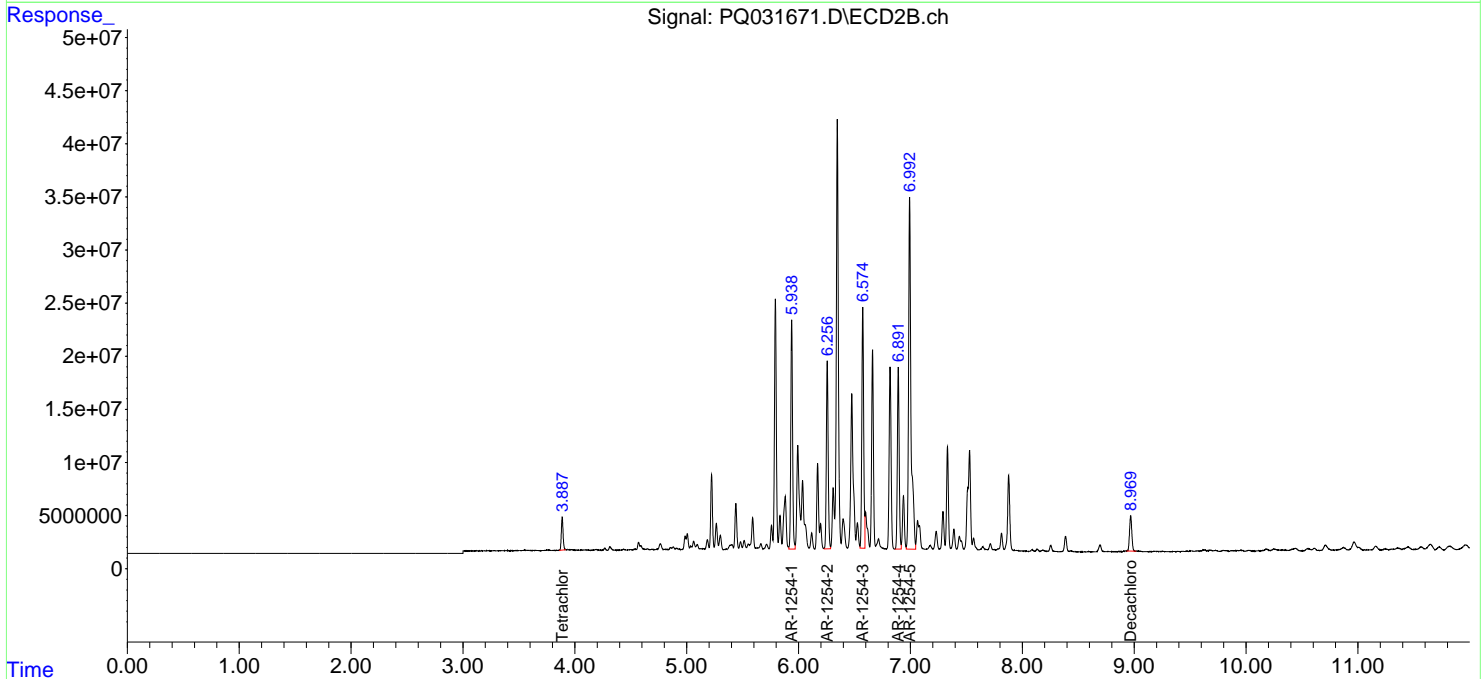
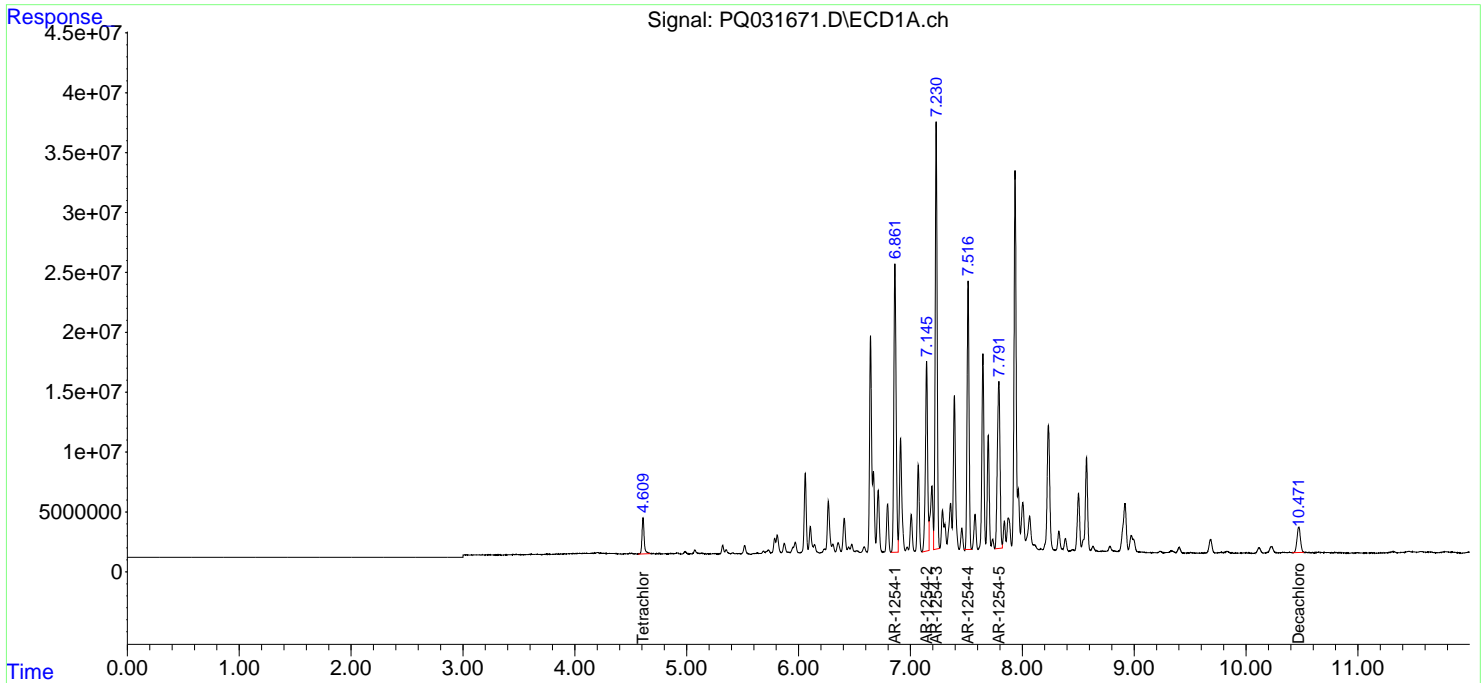
(f)=RT Delta > 1/2 Window (#)=Amounts differ by > 25% (m)=manual int.

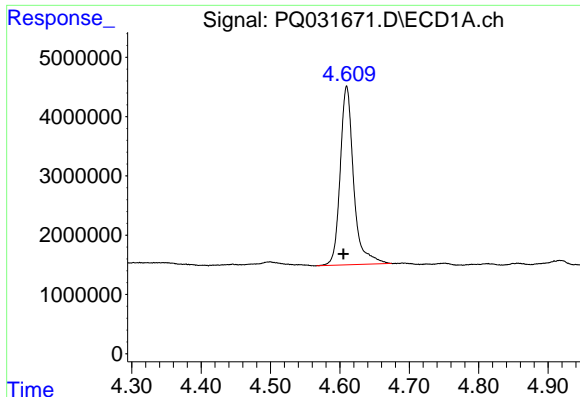
Data Path : Z:\pestpcbsrv\HPCHEM1\ECD\_Q\Data\PQ090518\  
 Data File : PQ031671.D  
 Signal(s) : Signal #1: ECD1A.ch Signal #2: ECD2B.ch  
 Acq On : 05 Sep 2018 13:34  
 Operator : SM\SJ  
 Sample : J4739-18  
 Misc :  
 ALS Vial : 9 Sample Multiplier: 1

Instrument :  
 ECD\_Q  
 ClientSampled :  
 AOC14-02-B

Integration File signal 1: autoint1.e  
 Integration File signal 2: autoint2.e  
 Quant Time: Sep 06 00:51:50 2018  
 Quant Method : Z:\pestpcbsrv\HPCHEM1\ECD\_Q\Method\PQ090118.M  
 Quant Title : GC EXTRACTABLES  
 QLast Update : Fri Aug 31 04:27:04 2018  
 Response via : Initial Calibration  
 Integrator: ChemStation

Volume Inj. : 2 µl  
 Signal #1 Phase : ZB-MR1 Signal #2 Phase: ZB-MR2  
 Signal #1 Info : 30Mx0.32mmx 0.50µ Signal #2 Info : 30M x 0.32mm x 0.25µm

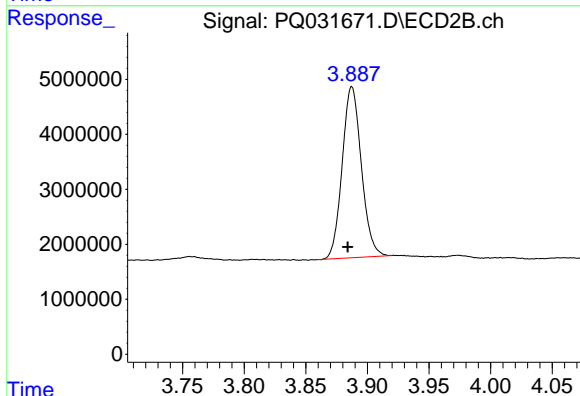




#1 Tetrachloro-m-xylene

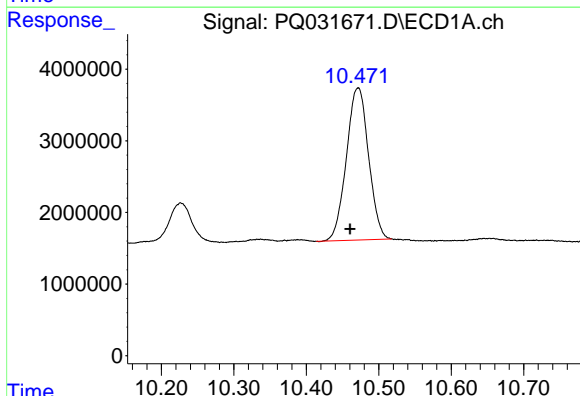
R.T.: 4.610 min  
 Delta R.T.: 0.005 min  
 Response: 40527758  
 Conc: 27.77 ng/ml

Instrument :  
 ECD\_Q  
 ClientSampleId :  
 AOC14-02-B



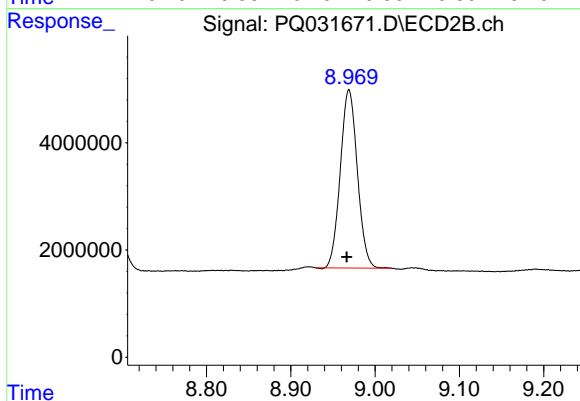
#1 Tetrachloro-m-xylene

R.T.: 3.887 min  
 Delta R.T.: 0.003 min  
 Response: 33700984  
 Conc: 29.58 ng/ml



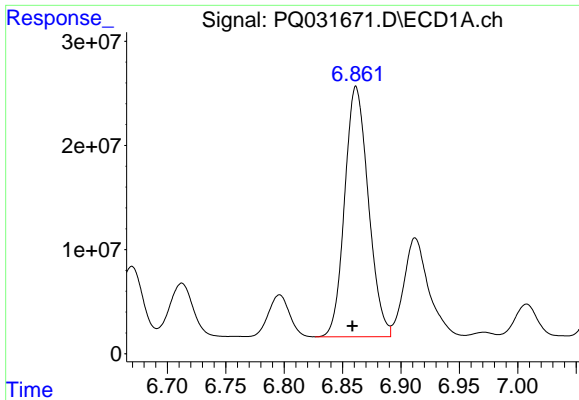
#2 Decachlorobiphenyl

R.T.: 10.472 min  
 Delta R.T.: 0.011 min  
 Response: 45117706  
 Conc: 21.04 ng/ml



#2 Decachlorobiphenyl

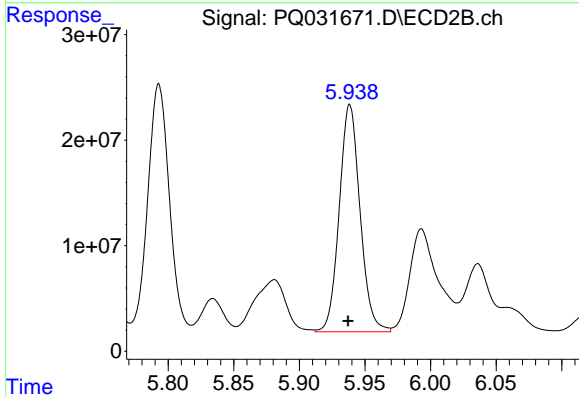
R.T.: 8.969 min  
 Delta R.T.: 0.003 min  
 Response: 46678212  
 Conc: 22.27 ng/ml



#26 AR-1254-1

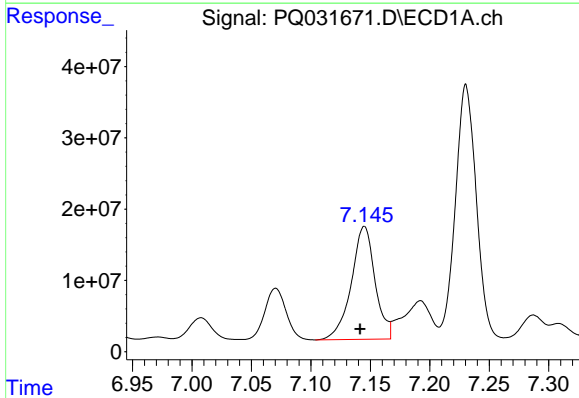
R.T.: 6.862 min  
 Delta R.T.: 0.003 min  
 Response: 338921201  
 Conc: 2336.51 ng/ml

Instrument :  
 ECD\_Q  
 ClientSampleId :  
 AOC14-02-B



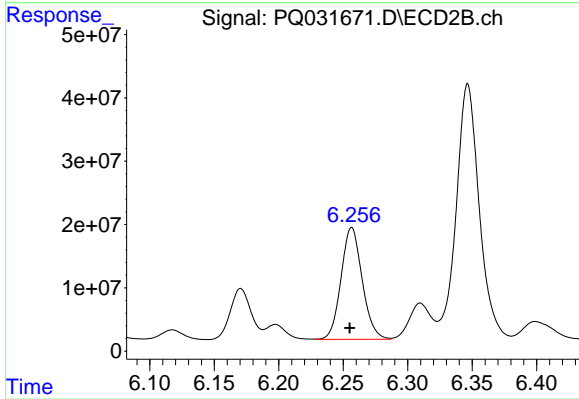
#26 AR-1254-1

R.T.: 5.939 min  
 Delta R.T.: 0.001 min  
 Response: 237929832  
 Conc: 2383.50 ng/ml



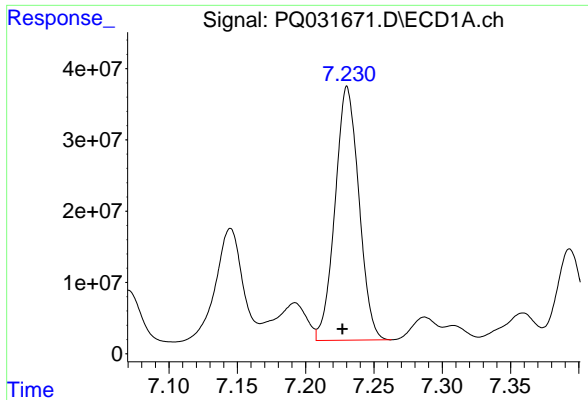
#27 AR-1254-2

R.T.: 7.145 min  
 Delta R.T.: 0.004 min  
 Response: 220512203  
 Conc: 2452.41 ng/ml



#27 AR-1254-2

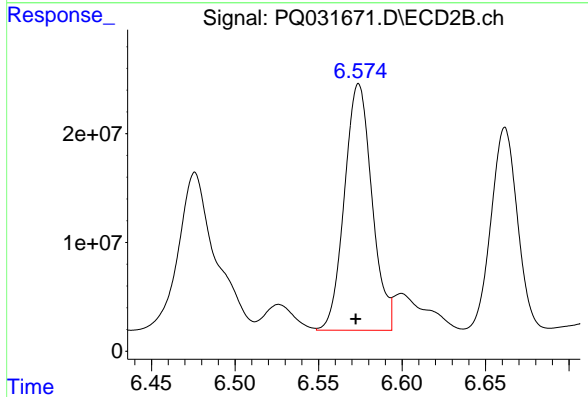
R.T.: 6.257 min  
 Delta R.T.: 0.001 min  
 Response: 201858457  
 Conc: 2302.03 ng/ml



#28 AR-1254-3

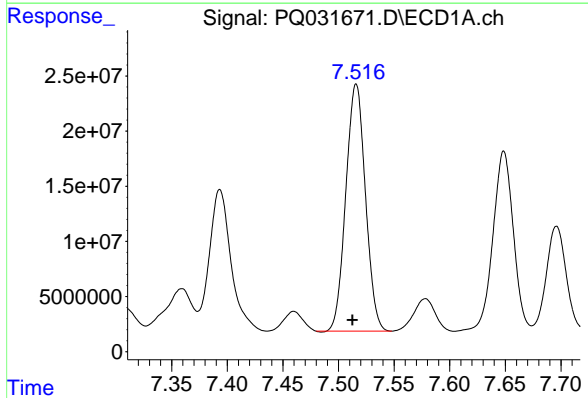
R.T.: 7.230 min  
Delta R.T.: 0.003 min  
Response: 432097234  
Conc: 2636.52 ng/ml

Instrument :  
ECD\_Q  
ClientSampled :  
AOC14-02-B



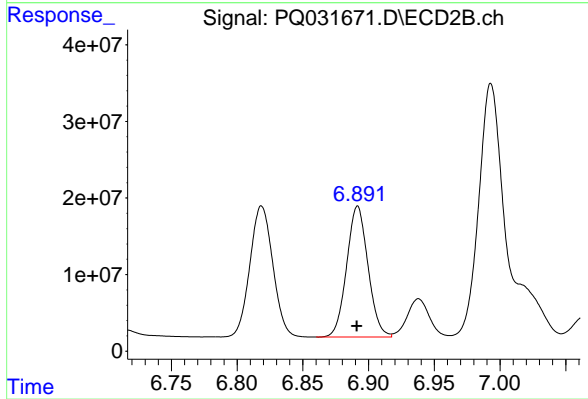
#28 AR-1254-3

R.T.: 6.574 min  
Delta R.T.: 0.002 min  
Response: 260127249  
Conc: 2251.30 ng/ml



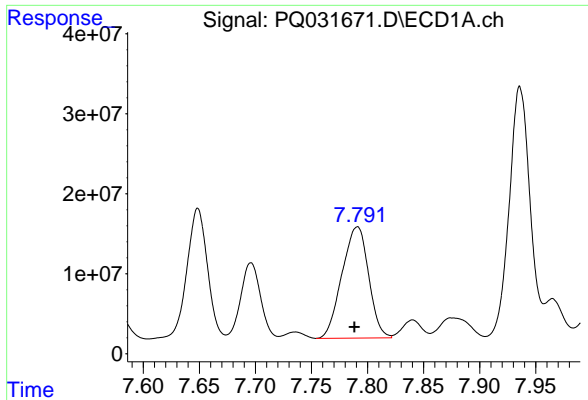
#29 AR-1254-4

R.T.: 7.516 min  
Delta R.T.: 0.004 min  
Response: 274863963  
Conc: 2247.76 ng/ml



#29 AR-1254-4

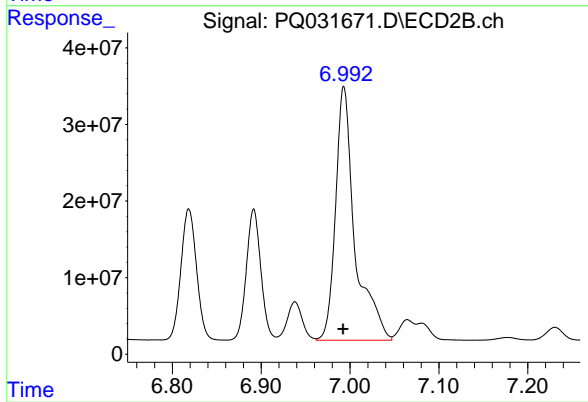
R.T.: 6.892 min  
Delta R.T.: 0.000 min  
Response: 193318844  
Conc: 2328.13 ng/ml



#30 AR-1254-5

R.T.: 7.791 min  
Delta R.T.: 0.003 min  
Response: 230511003  
Conc: 2429.13 ng/ml

Instrument :  
ECD\_Q  
ClientSampled :  
AOC14-02-B



#30 AR-1254-5

R.T.: 6.993 min  
Delta R.T.: 0.000 min  
Response: 500600808  
Conc: 3010.93 ng/ml