

Data Path : Z:\pestpcbsrv\HPCHEM1\ECD_Q\Data\PQ090618\
 Data File : PQ031696.D
 Signal(s) : Signal #1: ECD1A.ch Signal #2: ECD2B.ch
 Acq On : 06 Sep 2018 17:46
 Operator : SM\SJ
 Sample : I.BLK
 Misc :
 ALS Vial : 2 Sample Multiplier: 1

Instrument :
 ECD_Q
 ClientSampleId :
 I.BLK

Integration File signal 1: autoint1.e
 Integration File signal 2: autoint2.e
 Quant Time: Sep 07 03:23:31 2018
 Quant Method : Z:\pestpcbsrv\HPCHEM1\ECD_Q\Method\PQ090118.M
 Quant Title : GC EXTRACTABLES
 QLast Update : Fri Aug 31 04:27:04 2018
 Response via : Initial Calibration
 Integrator: ChemStation

Volume Inj. : 2 µl
 Signal #1 Phase : ZB-MR1 Signal #2 Phase: ZB-MR2
 Signal #1 Info : 30Mx0.32mmx 0.50µ Signal #2 Info : 30M x 0.32mm x 0.25µm

Compound	RT#1	RT#2	Resp#1	Resp#2	ng/ml	ng/ml

System Monitoring Compounds						
1) SA Tetrachlo...	4.605	3.881	34513041	27040220	23.652	23.732
2) SA Decachlor...	10.468	8.966	35051798	31998356	16.347	15.269

Target Compounds

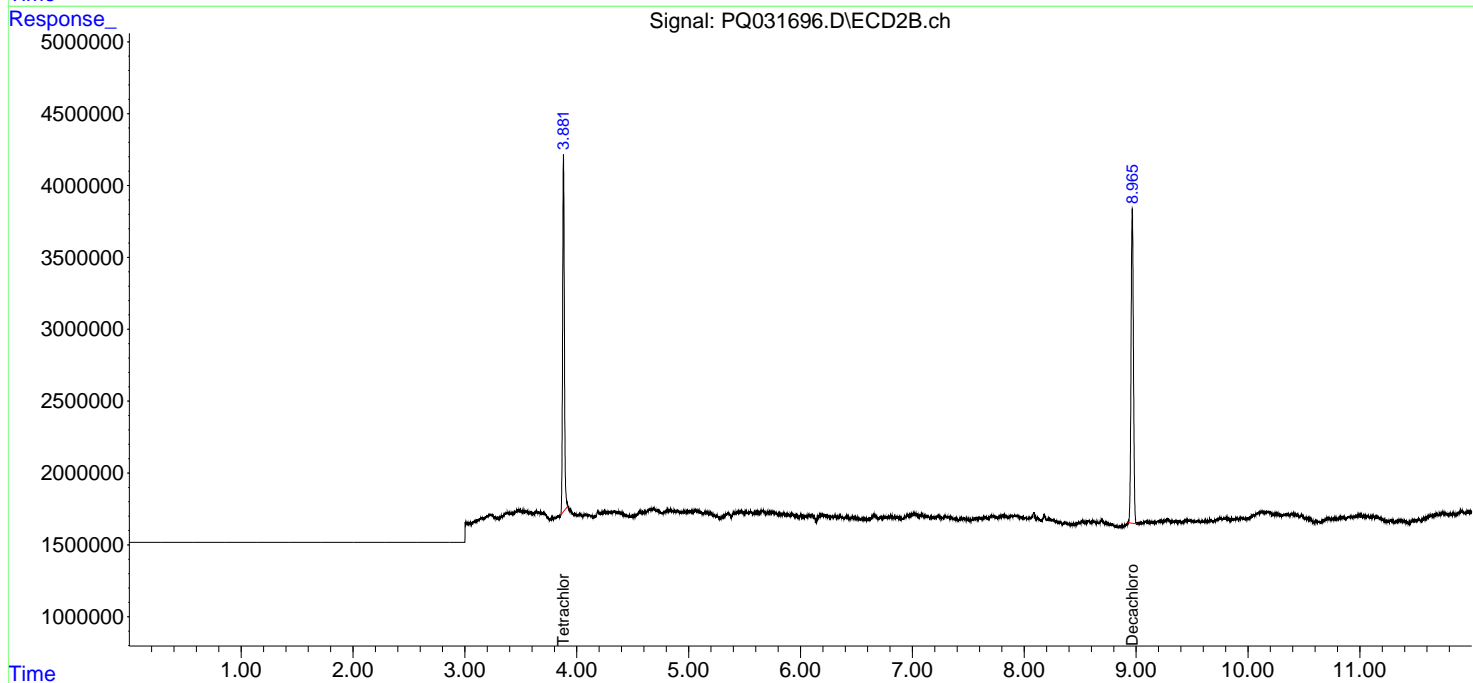
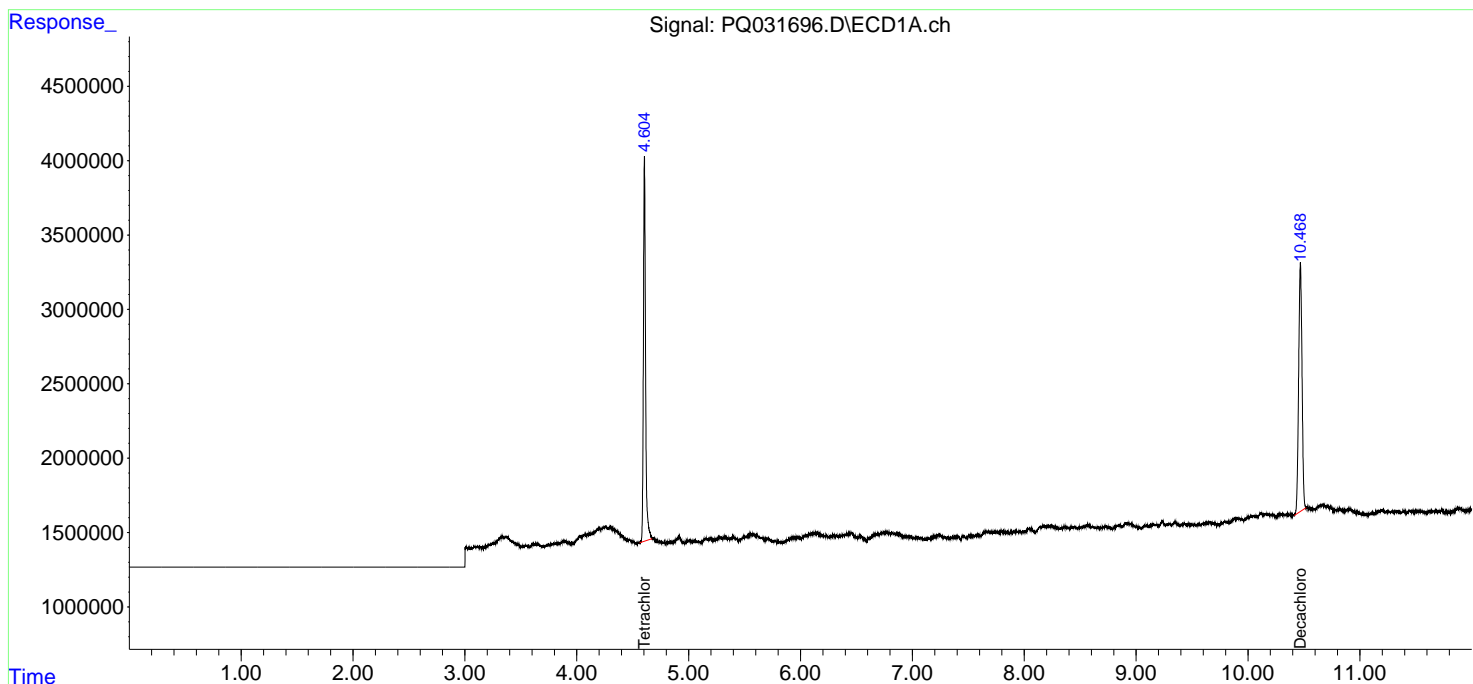
(f)=RT Delta > 1/2 Window (#)=Amounts differ by > 25% (m)=manual int.

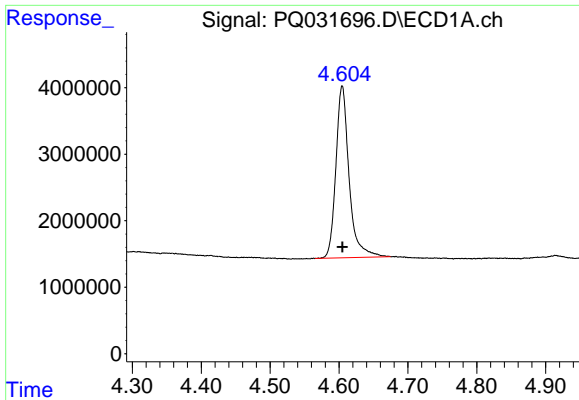
Data Path : Z:\pestpcbsrv\HPCHEM1\ECD_Q\Data\PQ090618\
 Data File : PQ031696.D
 Signal(s) : Signal #1: ECD1A.ch Signal #2: ECD2B.ch
 Acq On : 06 Sep 2018 17:46
 Operator : SM\SJ
 Sample : I.BLK
 Misc :
 ALS Vial : 2 Sample Multiplier: 1

Instrument :
 ECD_Q
 ClientSampled :
 I.BLK

Integration File signal 1: autoint1.e
 Integration File signal 2: autoint2.e
 Quant Time: Sep 07 03:23:31 2018
 Quant Method : Z:\pestpcbsrv\HPCHEM1\ECD_Q\Method\PQ090118.M
 Quant Title : GC EXTRACTABLES
 QLast Update : Fri Aug 31 04:27:04 2018
 Response via : Initial Calibration
 Integrator: ChemStation

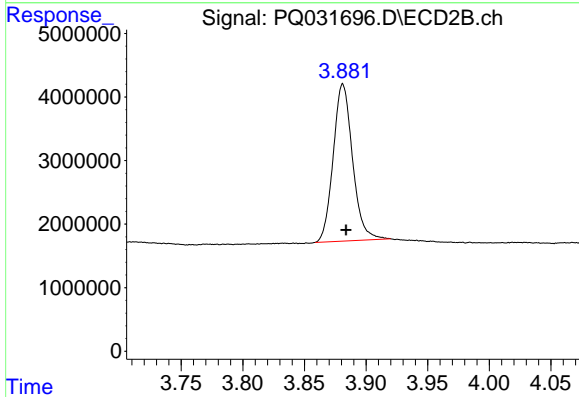
Volume Inj. : 2 µl
 Signal #1 Phase : ZB-MR1 Signal #2 Phase: ZB-MR2
 Signal #1 Info : 30Mx0.32mmx 0.50µ Signal #2 Info : 30M x 0.32mm x 0.25µm



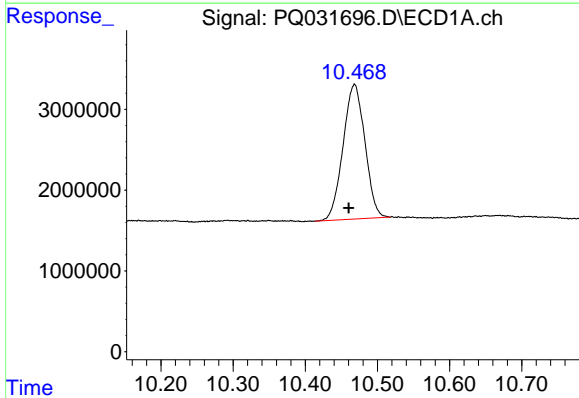


#1 Tetrachloro-m-xylene
 R.T.: 4.605 min
 Delta R.T.: 0.000 min
 Response: 34513041
 Conc: 23.65 ng/ml

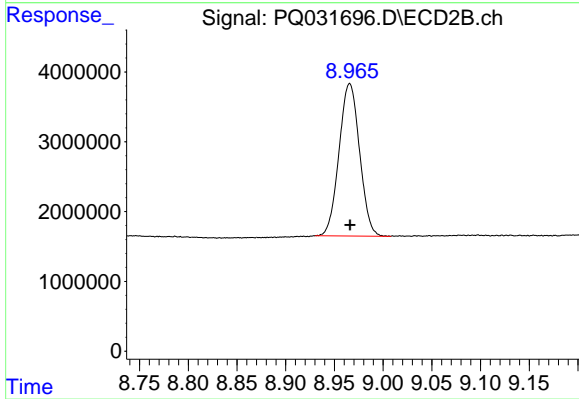
Instrument :
 ECD_Q
 ClientSampleId :
 I.BLK



#1 Tetrachloro-m-xylene
 R.T.: 3.881 min
 Delta R.T.: -0.003 min
 Response: 27040220
 Conc: 23.73 ng/ml



#2 Decachlorobiphenyl
 R.T.: 10.468 min
 Delta R.T.: 0.008 min
 Response: 35051798
 Conc: 16.35 ng/ml



#2 Decachlorobiphenyl
 R.T.: 8.966 min
 Delta R.T.: 0.000 min
 Response: 31998356
 Conc: 15.27 ng/ml