

Data Path : Z:\pestpcbsrv\HPCHEM1\ECD_Q\Data\PQ090619\
 Data File : PQ043313.D
 Signal(s) : Signal #1: ECD1A.ch Signal #2: ECD2B.ch
 Acq On : 06 Sep 2019 16:56
 Operator : SM\AJ
 Sample : AR1660ICC400
 Misc :
 ALS Vial : 5 Sample Multiplier: 1

Instrument :
 ECD_Q
 ClientSampleId :
 AR1660301

Integration File signal 1: autoint1.e
 Integration File signal 2: autoint2.e
 Quant Time: Sep 06 23:27:01 2019
 Quant Method : Z:\pestpcbsrv\HPCHEM1\ECD_Q\Method\PQ090619CLP.M
 Quant Title : GC EXTRACTABLES
 QLast Update : Fri Sep 06 23:25:41 2019
 Response via : Initial Calibration
 Integrator: ChemStation

Volume Inj. : 1 µl
 Signal #1 Phase : ZB MR1 Signal #2 Phase: ZB MR2
 Signal #1 Info : 30Mx0.32mmx 0.5µm Signal #2 Info : 30M x 0.32mm x 0.25µm

Compound	RT#1	RT#2	Resp#1	Resp#2	ng/ml	ng/ml

System Monitoring Compounds						
1) SA Tetrachlo...	5.696	4.787	77186369	27761573	20.000	20.000
2) SA Decachlor...	12.090	10.568	364.9E6	178.0E6	40.000	40.000
Target Compounds						
3) L1 AR-1016-1	7.139	6.243	65465104	27592632	400.000	400.000
4) L1 AR-1016-2	7.165	6.266	95515241	37024014	400.000	400.000
5) L1 AR-1016-3	7.236	6.480	58228636	20732751	400.000	400.000
6) L1 AR-1016-4	7.349	6.534	48634555	16855092	400.000	400.000
7) L1 AR-1016-5	7.682	6.787	48596575	22865413	400.000	400.000
31) L7 AR-1260-1	8.906	7.955	103.5E6	52729474	400.000	400.000
32) L7 AR-1260-2	9.176	8.157	130.6E6	67377132	400.000	400.000
33) L7 AR-1260-3	9.551	8.323	106.2E6	63200631	400.000	400.000
34) L7 AR-1260-4	9.794	8.823	129.2E6	61214921	400.000	400.000
35) L7 AR-1260-5	10.140	9.073	283.6E6	161.1E6	400.000	400.000

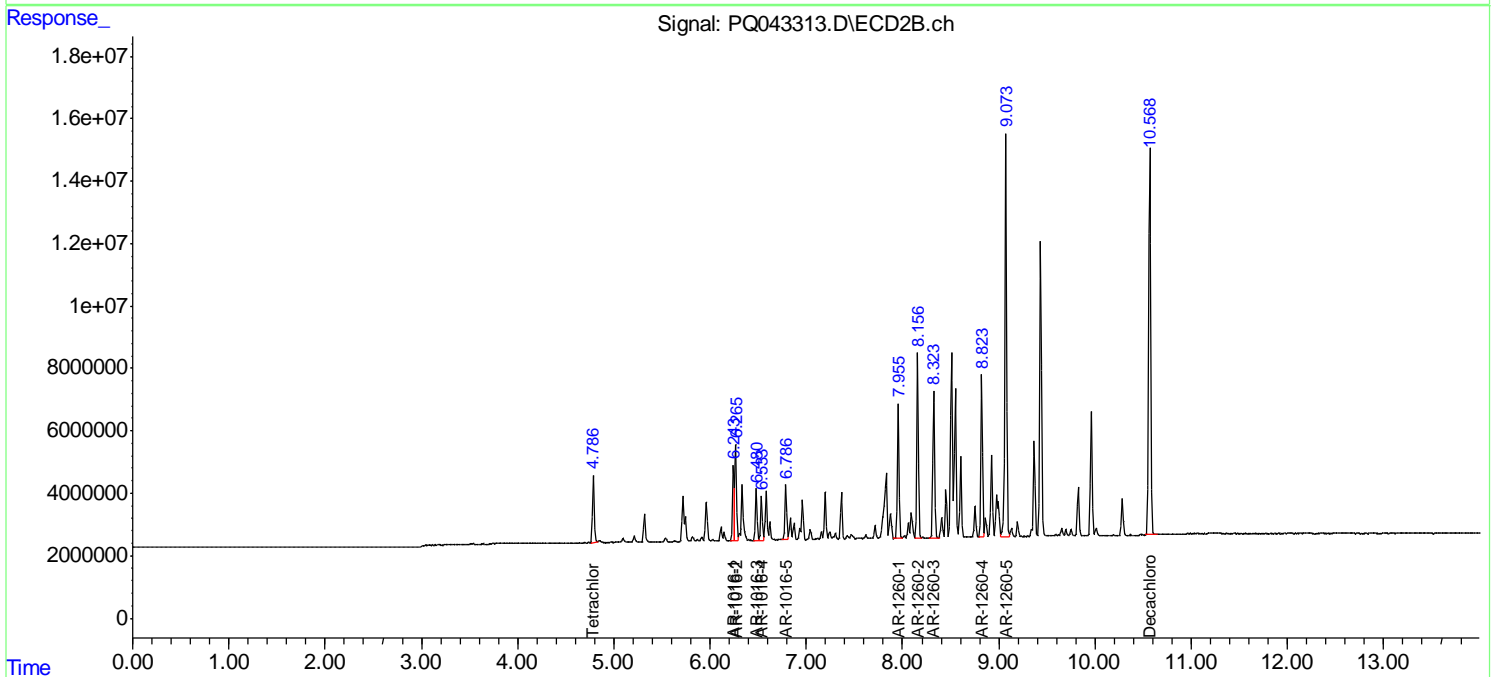
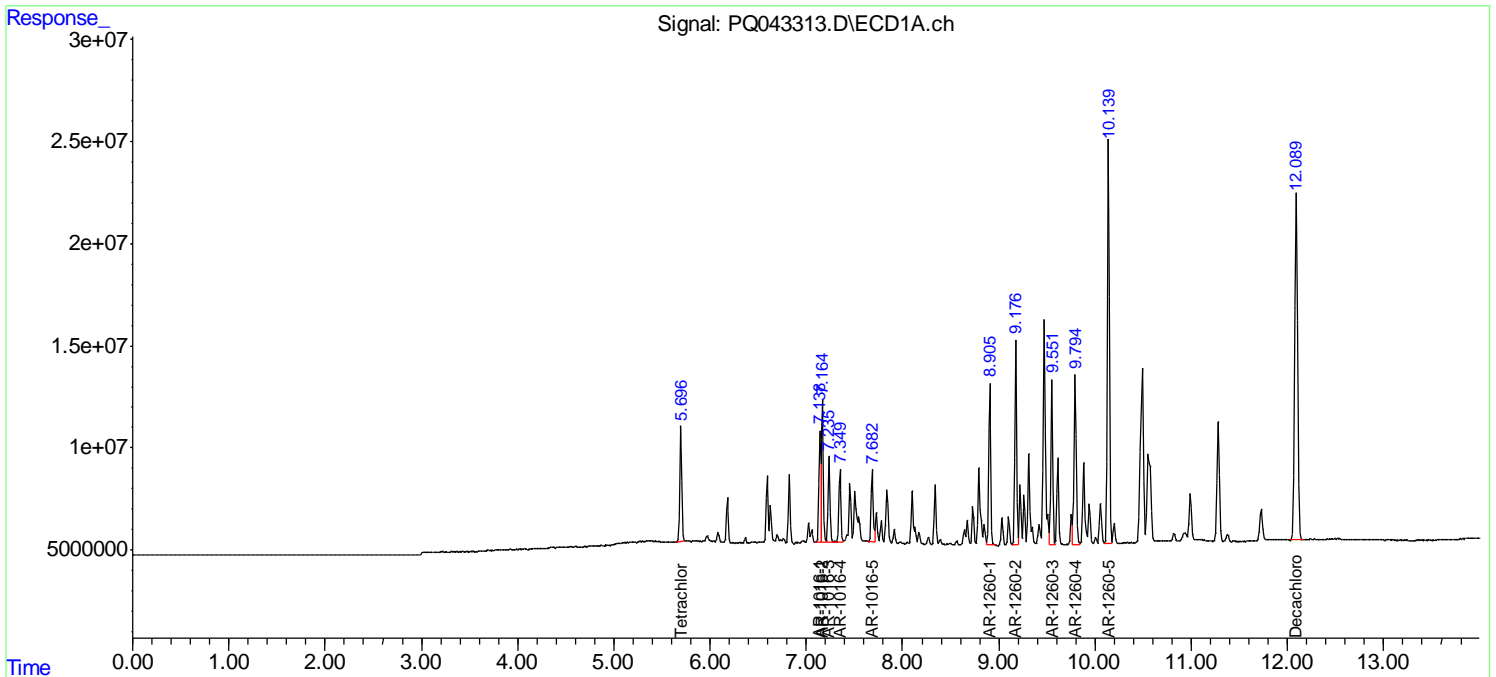
(f)=RT Delta > 1/2 Window (#)=Amounts differ by > 25% (m)=manual int.

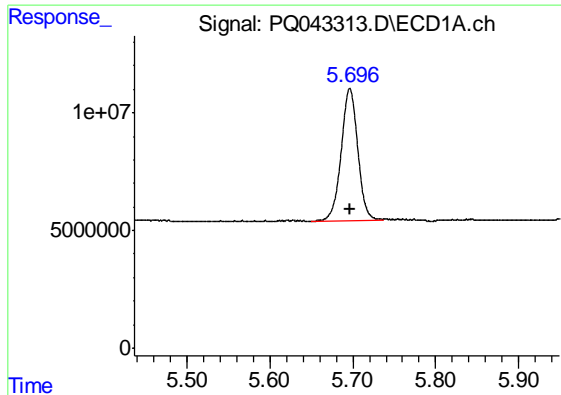
Data Path : Z:\pestpcbsrv\HPCHEM1\ECD_Q\Data\PQ090619\
 Data File : PQ043313.D
 Signal(s) : Signal #1: ECD1A.ch Signal #2: ECD2B.ch
 Acq On : 06 Sep 2019 16:56
 Operator : SM\AJ
 Sample : AR1660ICC400
 Misc :
 ALS Vial : 5 Sample Multiplier: 1

Instrument :
 ECD_Q
 ClientSampled :
 AR1660301

Integration File signal 1: autoint1.e
 Integration File signal 2: autoint2.e
 Quant Time: Sep 06 23:27:01 2019
 Quant Method : Z:\pestpcbsrv\HPCHEM1\ECD_Q\Method\PQ090619CLP.M
 Quant Title : GC EXTRACTABLES
 QLast Update : Fri Sep 06 23:25:41 2019
 Response via : Initial Calibration
 Integrator: ChemStation

Volume Inj. : 1 µl
 Signal #1 Phase : ZB MR1 Signal #2 Phase: ZB MR2
 Signal #1 Info : 30Mx0.32mmx 0.5µm Signal #2 Info : 30M x 0.32mm x 0.25µm

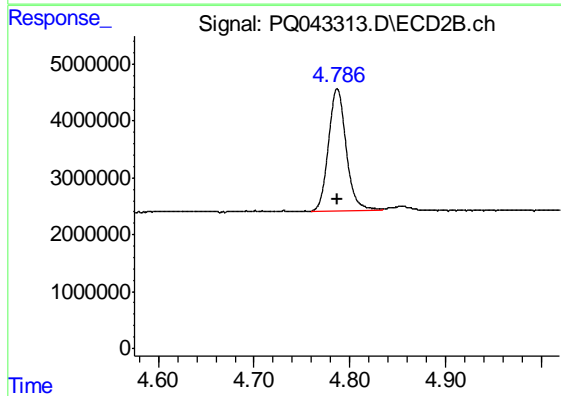




#1 Tetrachloro-m-xylene

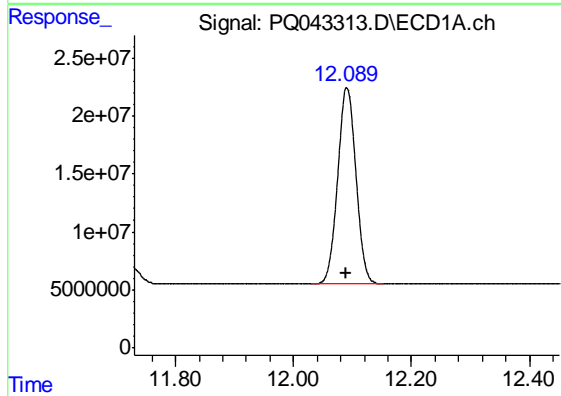
R.T.: 5.696 min
Delta R.T.: 0.000 min
Response: 77186369
Conc: 20.00 ng/ml

Instrument :
ECD_Q
ClientSampleId :
AR1660301



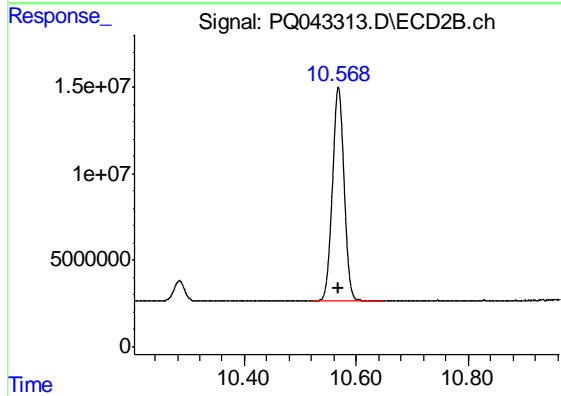
#1 Tetrachloro-m-xylene

R.T.: 4.787 min
Delta R.T.: 0.000 min
Response: 27761573
Conc: 20.00 ng/ml



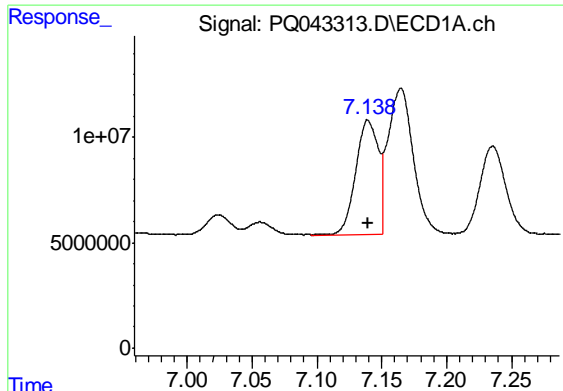
#2 Decachlorobiphenyl

R.T.: 12.090 min
Delta R.T.: 0.000 min
Response: 364895574
Conc: 40.00 ng/ml



#2 Decachlorobiphenyl

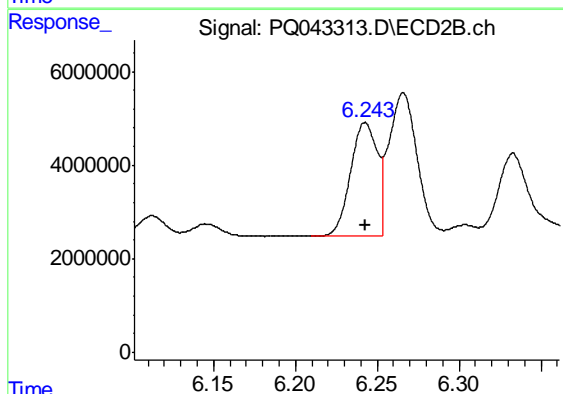
R.T.: 10.568 min
Delta R.T.: 0.000 min
Response: 178015371
Conc: 40.00 ng/ml



#3 AR-1016-1

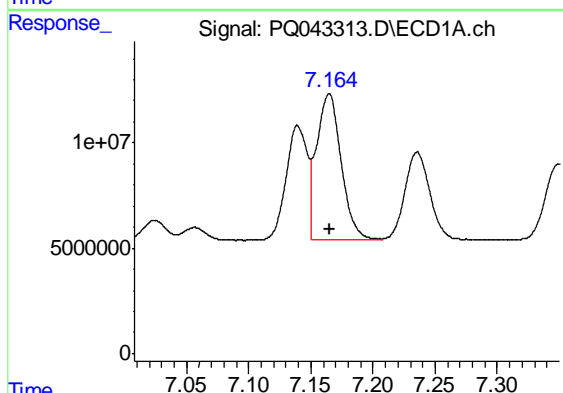
R.T.: 7.139 min
 Delta R.T.: 0.000 min
 Response: 65465104
 Conc: 400.00 ng/ml

Instrument :
 ECD_Q
 ClientSampleId :
 AR1660301



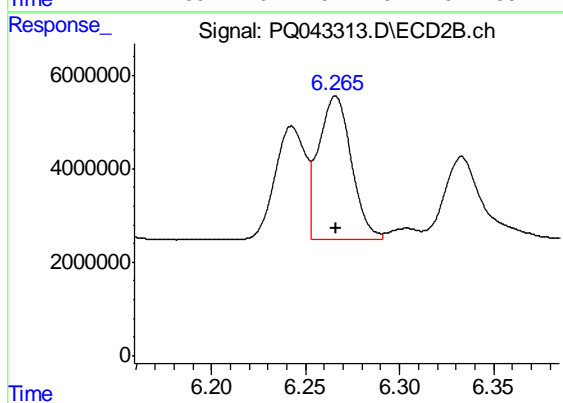
#3 AR-1016-1

R.T.: 6.243 min
 Delta R.T.: 0.000 min
 Response: 27592632
 Conc: 400.00 ng/ml



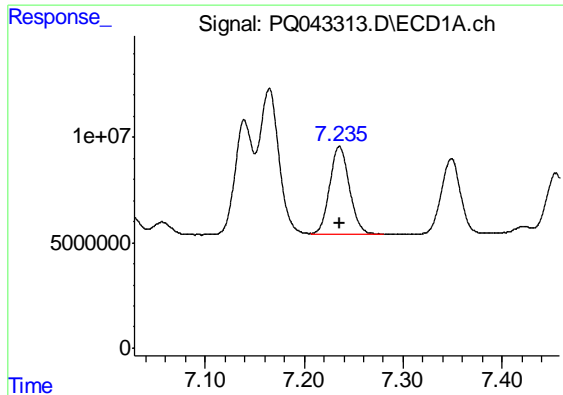
#4 AR-1016-2

R.T.: 7.165 min
 Delta R.T.: 0.000 min
 Response: 95515241
 Conc: 400.00 ng/ml



#4 AR-1016-2

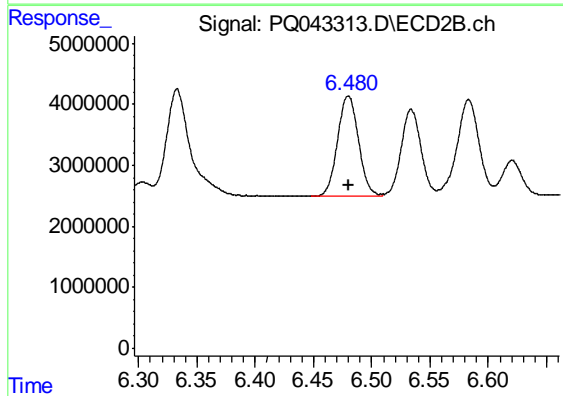
R.T.: 6.266 min
 Delta R.T.: 0.000 min
 Response: 37024014
 Conc: 400.00 ng/ml



#5 AR-1016-3

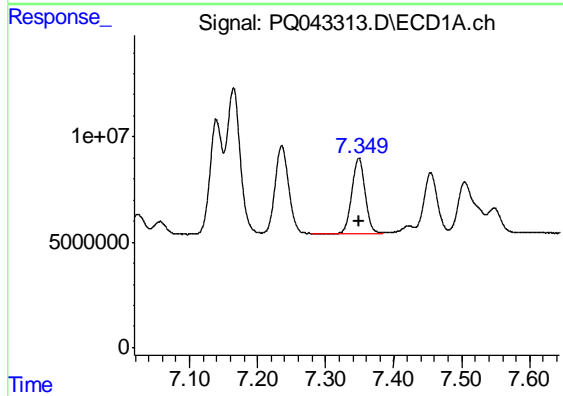
R.T.: 7.236 min
 Delta R.T.: 0.000 min
 Response: 58228636
 Conc: 400.00 ng/ml

Instrument :
 ECD_Q
 ClientSampleId :
 AR1660301



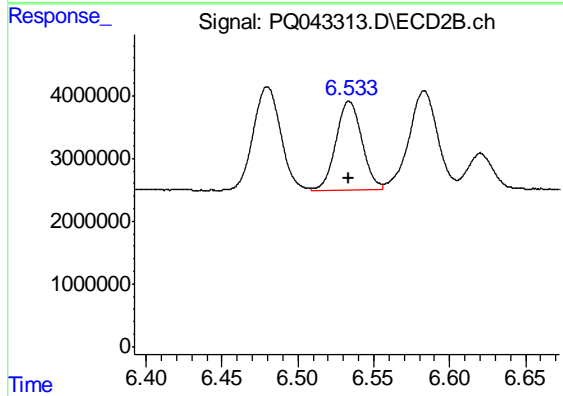
#5 AR-1016-3

R.T.: 6.480 min
 Delta R.T.: 0.000 min
 Response: 20732751
 Conc: 400.00 ng/ml



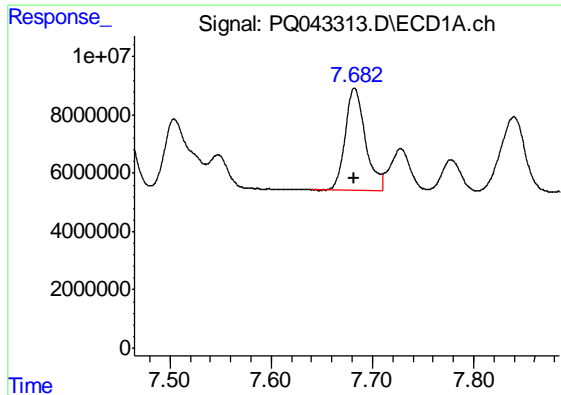
#6 AR-1016-4

R.T.: 7.349 min
 Delta R.T.: 0.000 min
 Response: 48634555
 Conc: 400.00 ng/ml



#6 AR-1016-4

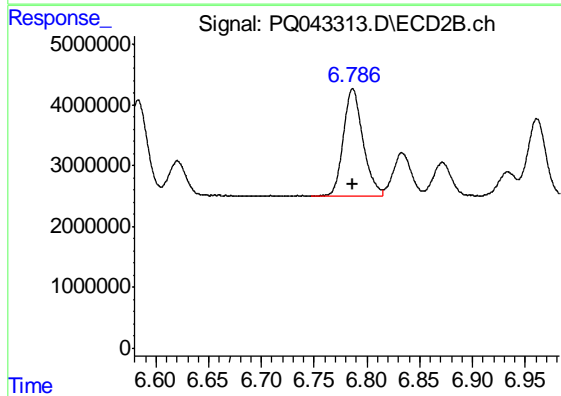
R.T.: 6.534 min
 Delta R.T.: 0.000 min
 Response: 16855092
 Conc: 400.00 ng/ml



#7 AR-1016-5

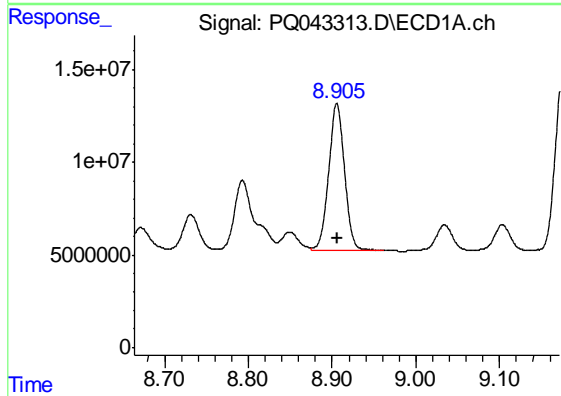
R.T.: 7.682 min
 Delta R.T.: 0.000 min
 Response: 48596575
 Conc: 400.00 ng/ml

Instrument :
 ECD_Q
 ClientSampleId :
 AR1660301



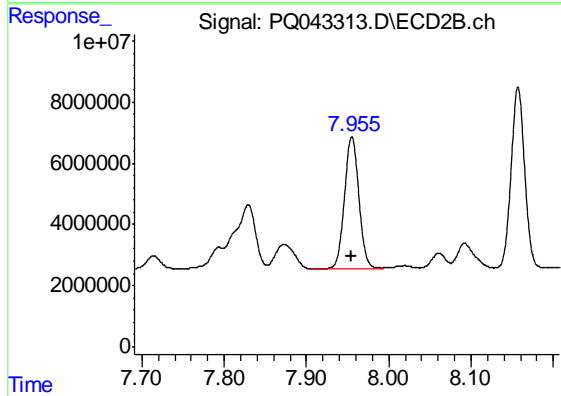
#7 AR-1016-5

R.T.: 6.787 min
 Delta R.T.: 0.000 min
 Response: 22865413
 Conc: 400.00 ng/ml



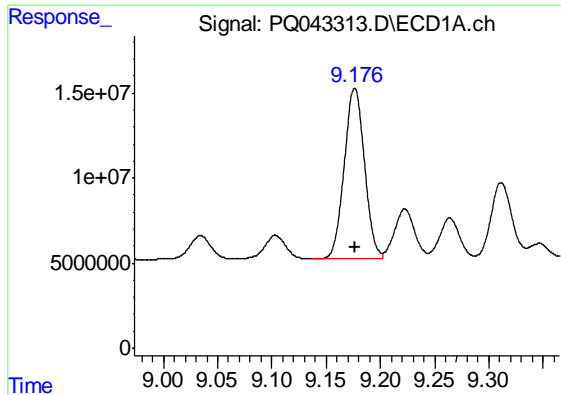
#31 AR-1260-1

R.T.: 8.906 min
 Delta R.T.: 0.000 min
 Response: 103537987
 Conc: 400.00 ng/ml



#31 AR-1260-1

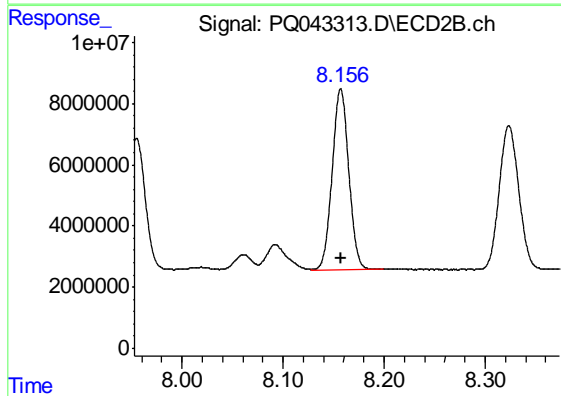
R.T.: 7.955 min
 Delta R.T.: 0.000 min
 Response: 52729474
 Conc: 400.00 ng/ml



#32 AR-1260-2

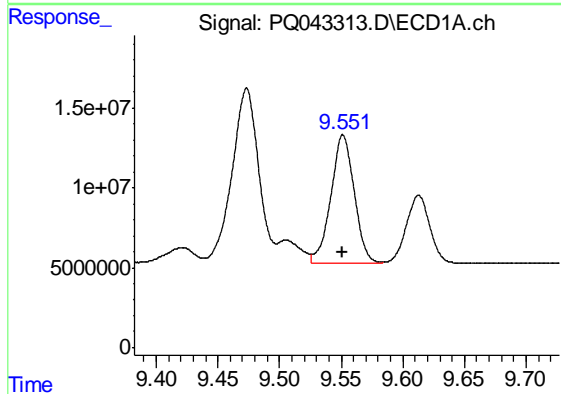
R.T.: 9.176 min
Delta R.T.: 0.000 min
Response: 130557295
Conc: 400.00 ng/ml

Instrument :
ECD_Q
ClientSampleId :
AR1660301



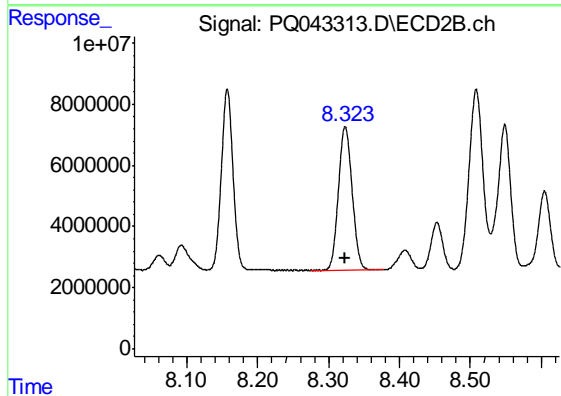
#32 AR-1260-2

R.T.: 8.157 min
Delta R.T.: 0.000 min
Response: 67377132
Conc: 400.00 ng/ml



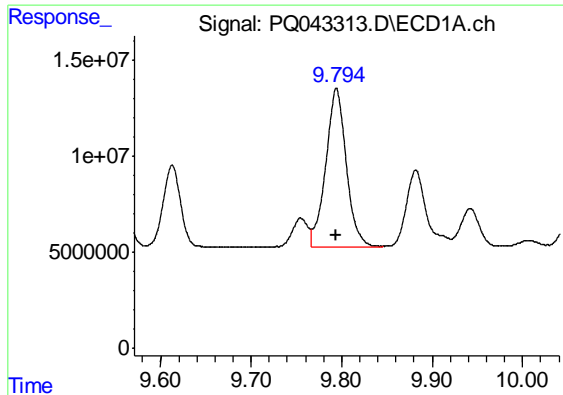
#33 AR-1260-3

R.T.: 9.551 min
Delta R.T.: 0.000 min
Response: 106235116
Conc: 400.00 ng/ml



#33 AR-1260-3

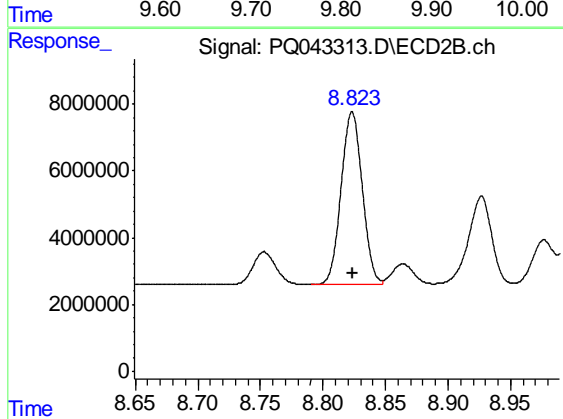
R.T.: 8.323 min
Delta R.T.: 0.000 min
Response: 63200631
Conc: 400.00 ng/ml



#34 AR-1260-4

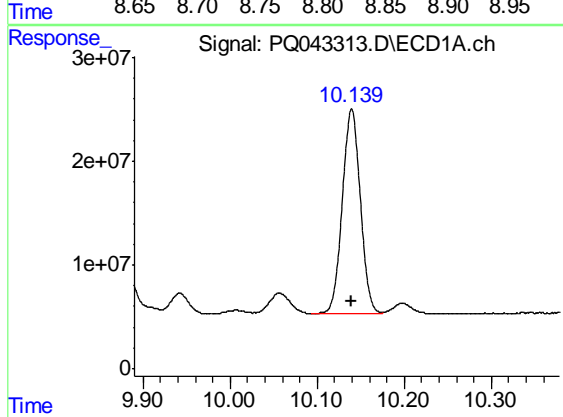
R.T.: 9.794 min
Delta R.T.: 0.000 min
Response: 129174730
Conc: 400.00 ng/ml

Instrument :
ECD_Q
ClientSampled :
AR1660301



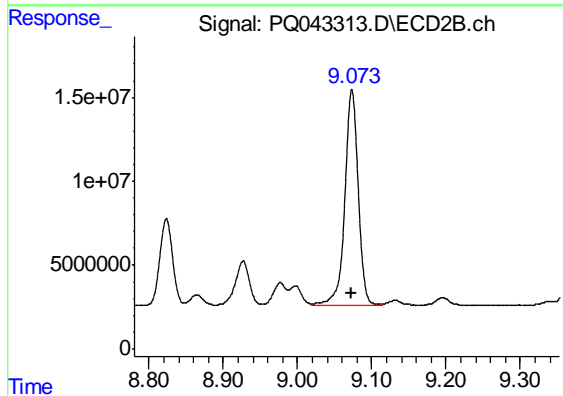
#34 AR-1260-4

R.T.: 8.823 min
Delta R.T.: 0.000 min
Response: 61214921
Conc: 400.00 ng/ml



#35 AR-1260-5

R.T.: 10.140 min
Delta R.T.: 0.000 min
Response: 283578499
Conc: 400.00 ng/ml



#35 AR-1260-5

R.T.: 9.073 min
Delta R.T.: 0.000 min
Response: 161146649
Conc: 400.00 ng/ml