

Data Path : Z:\pestpcbsrv\HPCHEM1\ECD_Q\Data\PQ090619\
 Data File : PQ043327.D
 Signal(s) : Signal #1: ECD1A.ch Signal #2: ECD2B.ch
 Acq On : 06 Sep 2019 21:00
 Operator : SM\AJ
 Sample : AR1242ICC200
 Misc :
 ALS Vial : 19 Sample Multiplier: 1

Instrument :
 ECD_Q
 ClientSampleId :
 AR1242201

Integration File signal 1: autoint1.e
 Integration File signal 2: autoint2.e
 Quant Time: Sep 07 00:29:36 2019
 Quant Method : Z:\pestpcbsrv\HPCHEM1\ECD_Q\Method\PQ090619CLP.M
 Quant Title : GC EXTRACTABLES
 QLast Update : Sat Sep 07 00:28:25 2019
 Response via : Initial Calibration
 Integrator: ChemStation

Volume Inj. : 1 µl
 Signal #1 Phase : ZB MR1 Signal #2 Phase: ZB MR2
 Signal #1 Info : 30Mx0.32mmx 0.5µm Signal #2 Info : 30M x 0.32mm x 0.25µm

Compound	RT#1	RT#2	Resp#1	Resp#2	ng/ml	ng/ml
----------	------	------	--------	--------	-------	-------

 System Monitoring Compounds

1) SA Tetrachlo...	5.697	4.786	40213844	13409439	10.564	9.882
2) SA Decachlor...	12.091	10.566	189.1E6	85063462	20.954	21.117

Target Compounds

16) L4 AR-1242-1	7.140	6.243	26923100	10855129	215.756	210.044
17) L4 AR-1242-2	7.165	6.265	37598501	14096134	208.019	204.184
18) L4 AR-1242-3	7.236	6.479	24189148	7811240	216.231	199.730
19) L4 AR-1242-4	7.349	6.582	18676772	7949442	201.951	206.287
20) L4 AR-1242-5	8.171	7.195	23699435	11422418	205.037	198.283

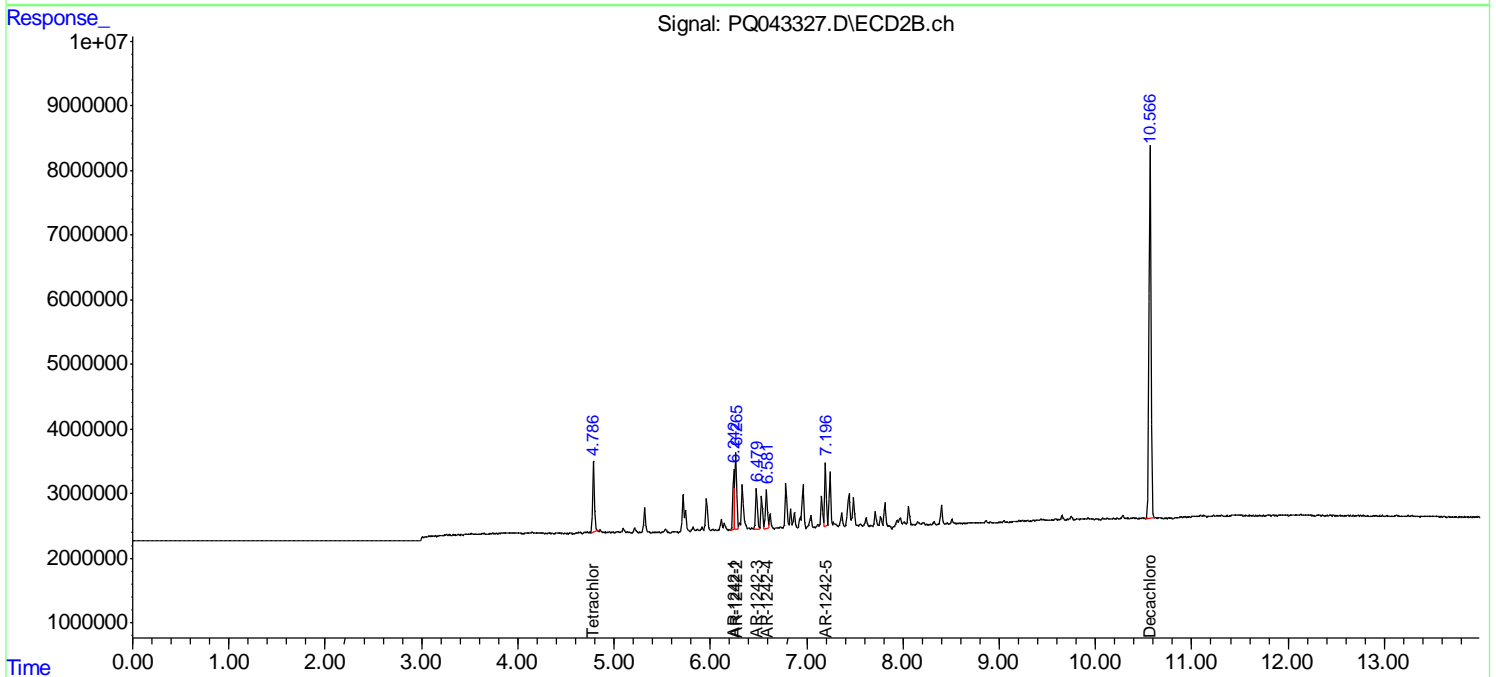
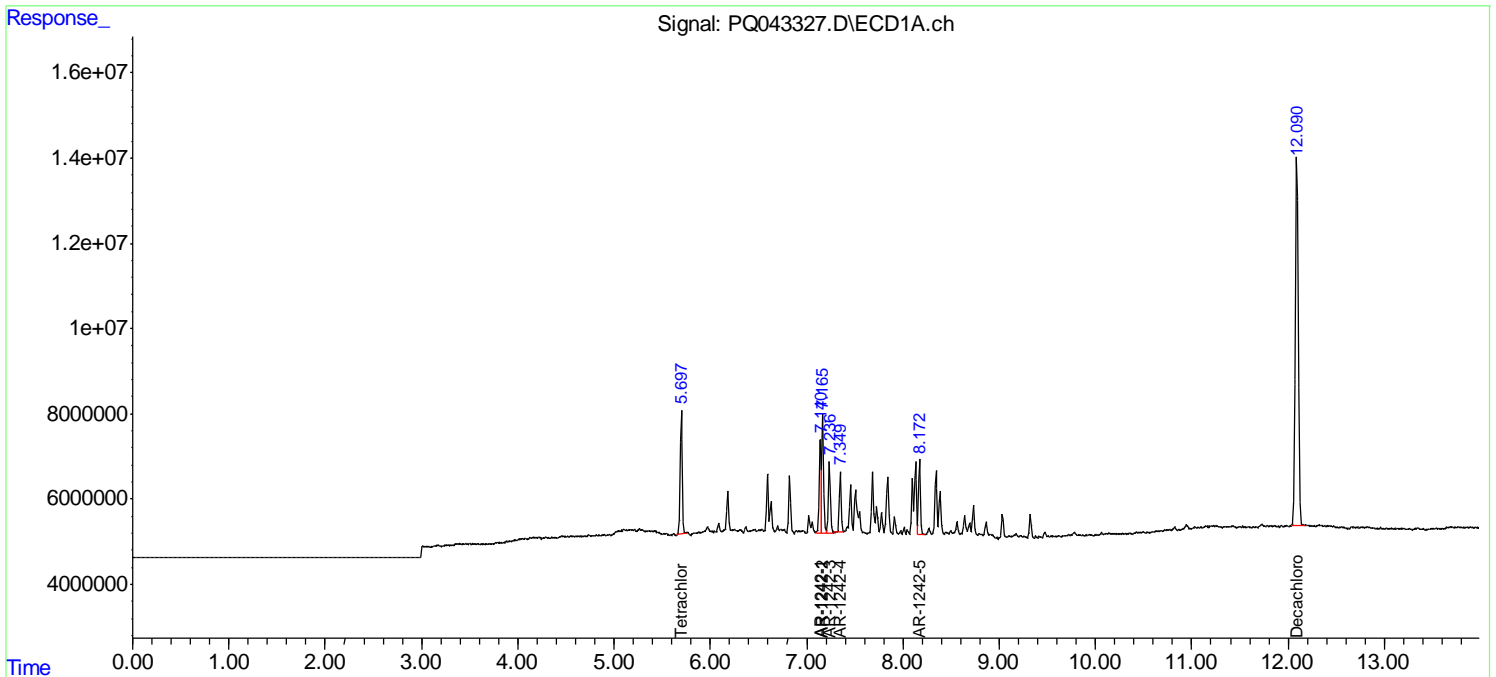
(f)=RT Delta > 1/2 Window (#)=Amounts differ by > 25% (m)=manual int.

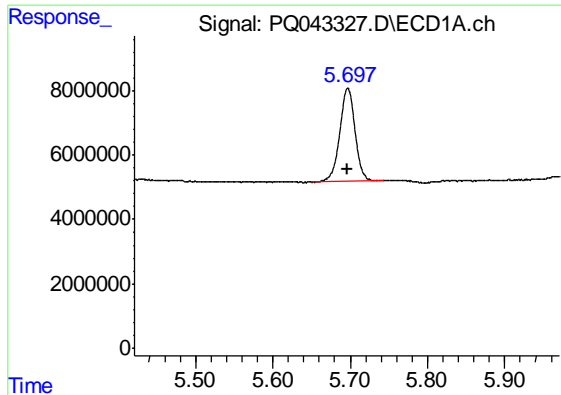
Data Path : Z:\pestpcbsrv\HPCHEM1\ECD_Q\Data\PQ090619\
 Data File : PQ043327.D
 Signal(s) : Signal #1: ECD1A.ch Signal #2: ECD2B.ch
 Acq On : 06 Sep 2019 21:00
 Operator : SM\AJ
 Sample : AR1242ICC200
 Misc :
 ALS Vial : 19 Sample Multiplier: 1

Instrument :
 ECD_Q
 ClientSampleId :
 AR1242201

Integration File signal 1: autoint1.e
 Integration File signal 2: autoint2.e
 Quant Time: Sep 07 00:29:36 2019
 Quant Method : Z:\pestpcbsrv\HPCHEM1\ECD_Q\Method\PQ090619CLP.M
 Quant Title : GC EXTRACTABLES
 QLast Update : Sat Sep 07 00:28:25 2019
 Response via : Initial Calibration
 Integrator: ChemStation

Volume Inj. : 1 µl
 Signal #1 Phase : ZB MR1 Signal #2 Phase: ZB MR2
 Signal #1 Info : 30Mx0.32mmx 0.5µm Signal #2 Info : 30M x 0.32mm x 0.25µm

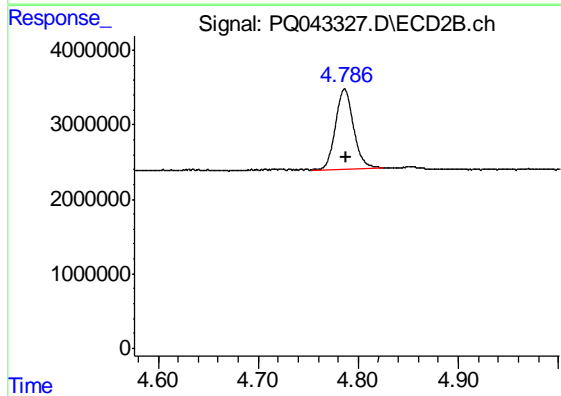




#1 Tetrachloro-m-xylene

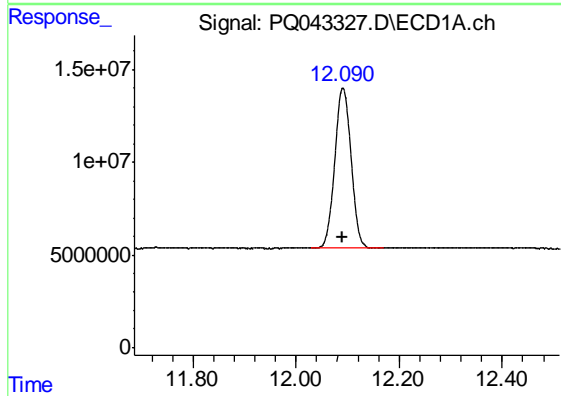
R.T.: 5.697 min
 Delta R.T.: 0.000 min
 Response: 40213844
 Conc: 10.56 ng/ml

Instrument :
 ECD_Q
 ClientSampleId :
 AR1242201



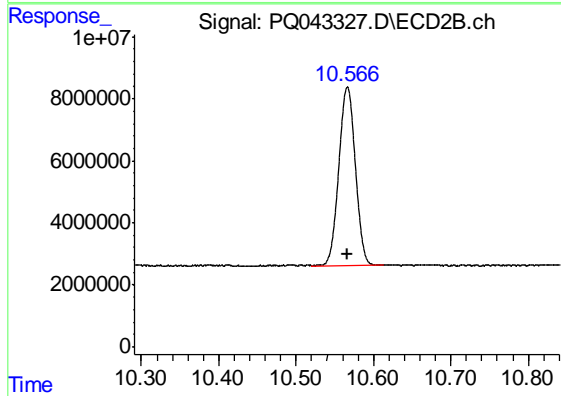
#1 Tetrachloro-m-xylene

R.T.: 4.786 min
 Delta R.T.: -0.001 min
 Response: 13409439
 Conc: 9.88 ng/ml



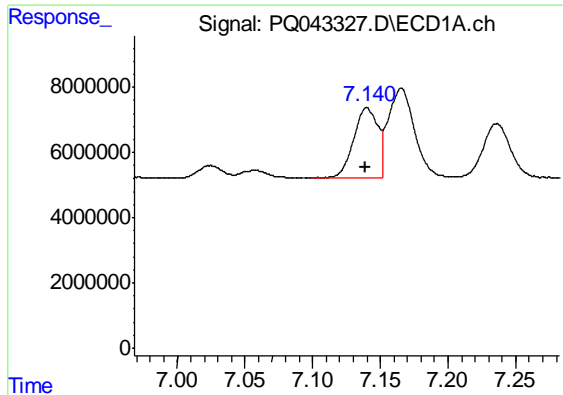
#2 Decachlorobiphenyl

R.T.: 12.091 min
 Delta R.T.: 0.000 min
 Response: 189101552
 Conc: 20.95 ng/ml



#2 Decachlorobiphenyl

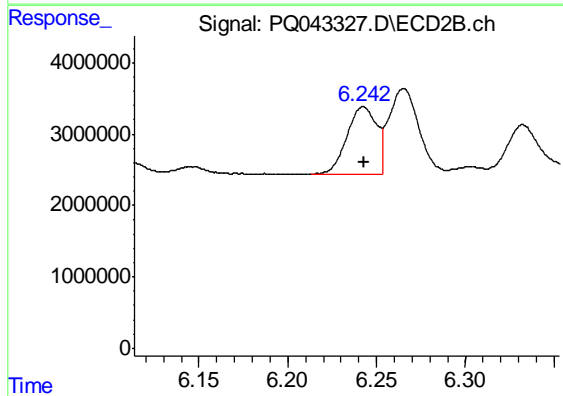
R.T.: 10.566 min
 Delta R.T.: 0.000 min
 Response: 85063462
 Conc: 21.12 ng/ml



#16 AR-1242-1

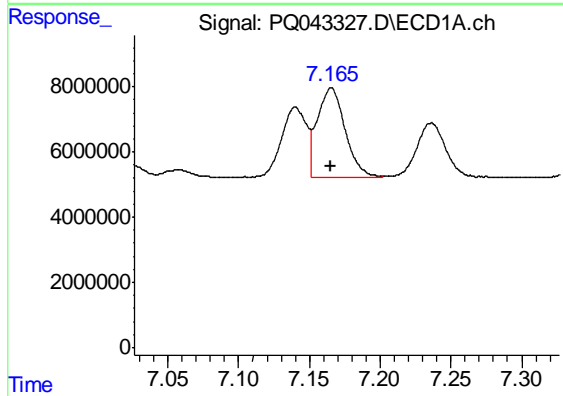
R.T.: 7.140 min
 Delta R.T.: 0.000 min
 Response: 26923100
 Conc: 215.76 ng/ml

Instrument :
 ECD_Q
 ClientSampleId :
 AR1242201



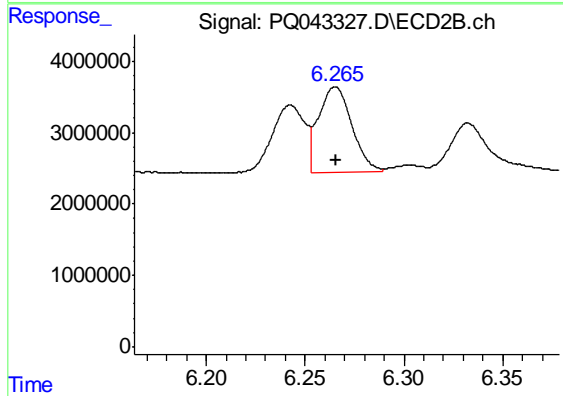
#16 AR-1242-1

R.T.: 6.243 min
 Delta R.T.: 0.000 min
 Response: 10855129
 Conc: 210.04 ng/ml



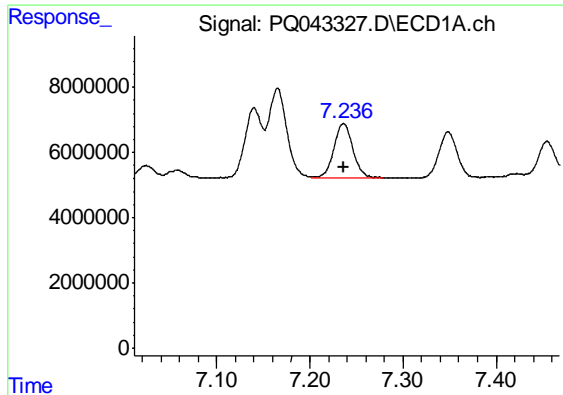
#17 AR-1242-2

R.T.: 7.165 min
 Delta R.T.: 0.000 min
 Response: 37598501
 Conc: 208.02 ng/ml



#17 AR-1242-2

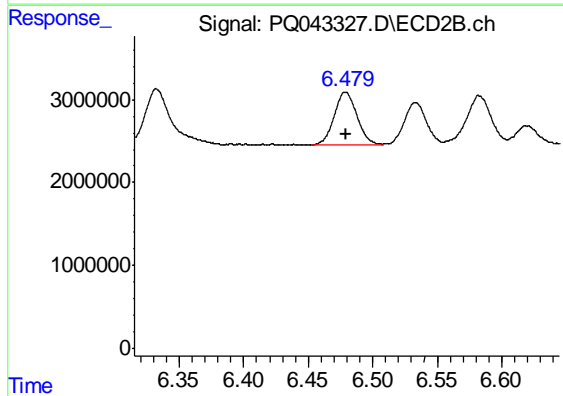
R.T.: 6.265 min
 Delta R.T.: 0.000 min
 Response: 14096134
 Conc: 204.18 ng/ml



#18 AR-1242-3

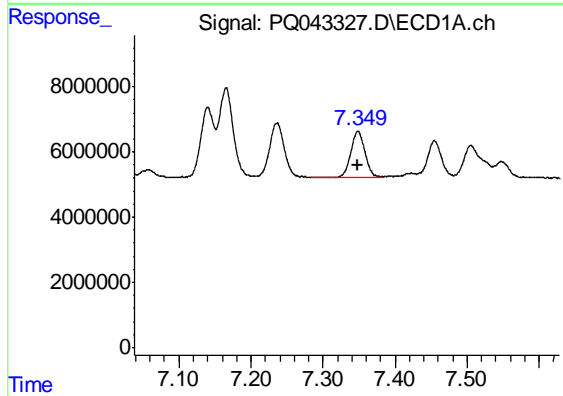
R.T.: 7.236 min
 Delta R.T.: 0.000 min
 Response: 24189148
 Conc: 216.23 ng/ml

Instrument :
 ECD_Q
 ClientSampleId :
 AR1242201



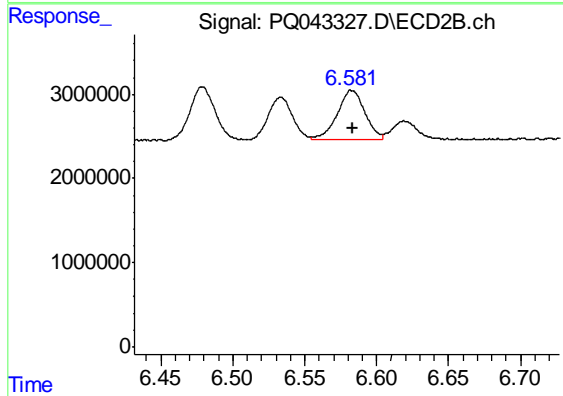
#18 AR-1242-3

R.T.: 6.479 min
 Delta R.T.: 0.000 min
 Response: 7811240
 Conc: 199.73 ng/ml



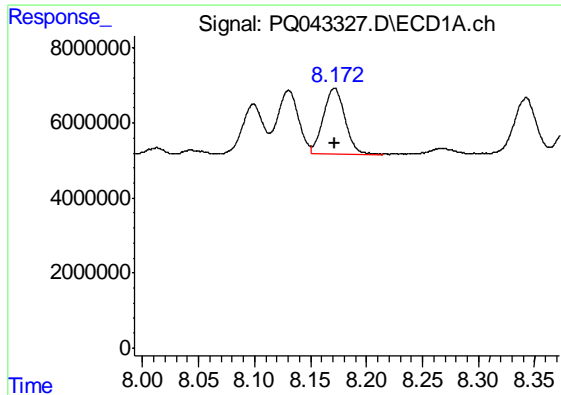
#19 AR-1242-4

R.T.: 7.349 min
 Delta R.T.: 0.000 min
 Response: 18676772
 Conc: 201.95 ng/ml



#19 AR-1242-4

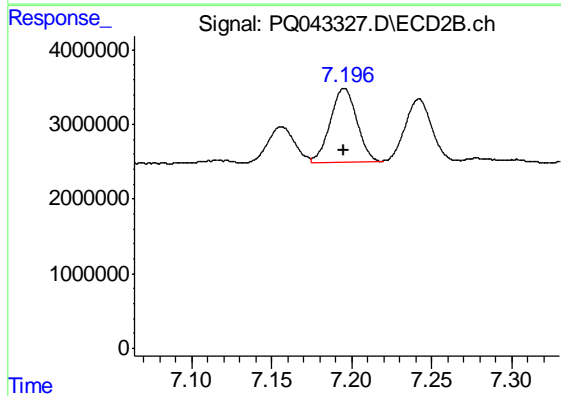
R.T.: 6.582 min
 Delta R.T.: -0.001 min
 Response: 7949442
 Conc: 206.29 ng/ml



#20 AR-1242-5

R.T.: 8.171 min
Delta R.T.: 0.000 min
Response: 23699435
Conc: 205.04 ng/ml

Instrument :
ECD_Q
ClientSampleId :
AR1242201



#20 AR-1242-5

R.T.: 7.195 min
Delta R.T.: 0.000 min
Response: 11422418
Conc: 198.28 ng/ml