

Data Path : Z:\pestpcbsrv\HPCHEM1\ECD_Q\Data\PQ090924\
 Data File : PQ068475.D
 Signal(s) : Signal #1: ECD1A.ch Signal #2: ECD2B.ch
 Acq On : 10 Sep 2024 03:42
 Operator : YP\AJ
 Sample : I.BLK
 Misc :
 ALS Vial : 2 Sample Multiplier: 1

Instrument :
 ECD_Q
 ClientSampleId :
 I.BLK

Integration File signal 1: autoint1.e
 Integration File signal 2: autoint2.e
 Quant Time: Sep 10 07:08:22 2024
 Quant Method : Z:\pestpcbsrv\HPCHEM1\ECD_Q\Method\PQ090624.M
 Quant Title : GC EXTRACTABLES
 QLast Update : Sat Sep 07 07:27:42 2024
 Response via : Initial Calibration
 Integrator: ChemStation

Volume Inj. : 2 µl
 Signal #1 Phase : ZB-MR1 Signal #2 Phase: ZB-MR2
 Signal #1 Info : 30Mx0.32mmx 0.50µ Signal #2 Info : 30M x 0.32mm x 0.25µm

Compound	RT#1	RT#2	Resp#1	Resp#2	ng/ml	ng/ml
System Monitoring Compounds						
1) SA Tetrachlo...	3.438	2.822	143.8E6	147.3E6	20.144	20.686
2) SA Decachlor...	8.611	7.599	81445874	136.3E6	18.688	20.646
Target Compounds						
3) L1 AR-1016-1	4.541	3.860f	708776	1958893	3.033	8.249 #
4) L1 AR-1016-2	4.560	3.860	942079	1958893	2.566	5.421 #
5) L1 AR-1016-3	4.609	4.003	461268	204832	2.041	1.055 #
6) L1 AR-1016-4	4.706	4.050	435427	296221	2.287	1.834
7) L1 AR-1016-5	4.991	4.252	809284	2064764	4.577	10.690 #
8) L2 AR-1221-1	3.630	3.022	90259	296615	1.075	3.256 #
9) L2 AR-1221-2	3.718	3.092	2322664	2526702	35.891	34.983
10) L2 AR-1221-3	3.783	3.165	151991	328371	0.772	1.622 #
11) L3 AR-1232-1	3.783	3.165	151991	328371	0.947	2.019 #
12) L3 AR-1232-2	4.282	3.860	192248	1958893	2.179	12.450 #
13) L3 AR-1232-3	4.560	4.003	942079	204832	5.849	2.463 #
14) L3 AR-1232-4	4.706	4.077	435427	2968400	5.441	42.049 #
15) L3 AR-1232-5	4.799	4.252	1293753	2064764	24.005	26.127
16) L4 AR-1242-1	4.541	3.860f	708776	1958893	3.923	10.724 #
17) L4 AR-1242-2	4.560	3.860	942079	1958893	3.384	7.243 #
18) L4 AR-1242-3	4.609	4.003	461268	204832	2.683	1.392 #
19) L4 AR-1242-4	4.706	4.077	435427	2968400	3.069	21.278 #
20) L4 AR-1242-5	5.432	4.590	1360010	1318824	9.437	7.019 #
21) L5 AR-1248-1	4.541	3.860f	708776	1958893	5.057	13.714 #
22) L5 AR-1248-2	4.799	4.050	1293753	296221	6.643	1.376 #
23) L5 AR-1248-3	4.991	4.077	809284	2968400	3.449	14.300 #
24) L5 AR-1248-4	5.383	4.252	2383673	2064764	9.232	8.079
25) L5 AR-1248-5	5.432	4.626	1360010	574380	5.370	2.249 #
26) L6 AR-1254-1	5.360	4.590	2820907	1318824	11.011	3.543 #
27) L6 AR-1254-2	5.579	4.722	809272	3824779	2.068	11.469 #
28) L6 AR-1254-3	5.919	5.125	1098830	3955467	2.702	7.699 #
29) L6 AR-1254-4	6.221	5.343	1852870	955689	6.433	3.042 #
30) L6 AR-1254-5	6.621	5.748	220162	1059053	0.673	2.218 #
31) L7 AR-1260-1	6.091	5.235	434714	915761	1.307	2.385 #
32) L7 AR-1260-2	6.346	5.439	184635	91551	0.493	0.201 #
33) L7 AR-1260-3	6.699	5.564	229321	472283	0.976	1.084
34) L7 AR-1260-4	6.919	6.037	43255	1011541	0.156	3.148 #
35) L7 AR-1260-5	7.231	6.286	163252	322040	0.305	0.442 #
36) L8 AR-1262-1	6.928	5.788	81220	572868	0.230	1.181 #
37) L8 AR-1262-2	7.231	6.037	163252	1011541	0.250	2.271 #
38) L8 AR-1262-3	7.510	6.550	297701	4426796	0.693	12.499 #
39) L8 AR-1262-4	7.577	6.615	324214	1097663	0.972	1.657 #
40) L8 AR-1262-5	8.089	7.133	200344	402407	0.951	1.315 #
41) L9 AR-1268-1	7.510	6.550	297701	4426796	0.413	4.351 #

Data Path : Z:\pestpcbsrv\HPCHEM1\ECD_Q\Data\PQ090924\
 Data File : PQ068475.D
 Signal(s) : Signal #1: ECD1A.ch Signal #2: ECD2B.ch
 Acq On : 10 Sep 2024 03:42
 Operator : YP\AJ
 Sample : I.BLK
 Misc :
 ALS Vial : 2 Sample Multiplier: 1

Instrument :
 ECD_Q
 ClientSampleId :
 I.BLK

Integration File signal 1: autoint1.e
 Integration File signal 2: autoint2.e
 Quant Time: Sep 10 07:08:22 2024
 Quant Method : Z:\pestpcbsrv\HPCHEM1\ECD_Q\Method\PQ090624.M
 Quant Title : GC EXTRACTABLES
 QLast Update : Sat Sep 07 07:27:42 2024
 Response via : Initial Calibration
 Integrator: ChemStation

Volume Inj. : 2 µl
 Signal #1 Phase : ZB-MR1 Signal #2 Phase: ZB-MR2
 Signal #1 Info : 30Mx0.32mmx 0.50µ Signal #2 Info : 30M x 0.32mm x 0.25µm

	Compound	RT#1	RT#2	Resp#1	Resp#2	ng/ml	ng/ml
42)	L9 AR-1268-2	7.589	6.615	192561	1097663	0.292	1.209 #
43)	L9 AR-1268-3	7.764	6.823	244861	4411180	0.452	5.553 #
44)	L9 AR-1268-4	8.089	7.133	200344	402407	0.929	1.272 #
45)	L9 AR-1268-5	8.374	7.387	428575	1985048	0.271	0.840 #

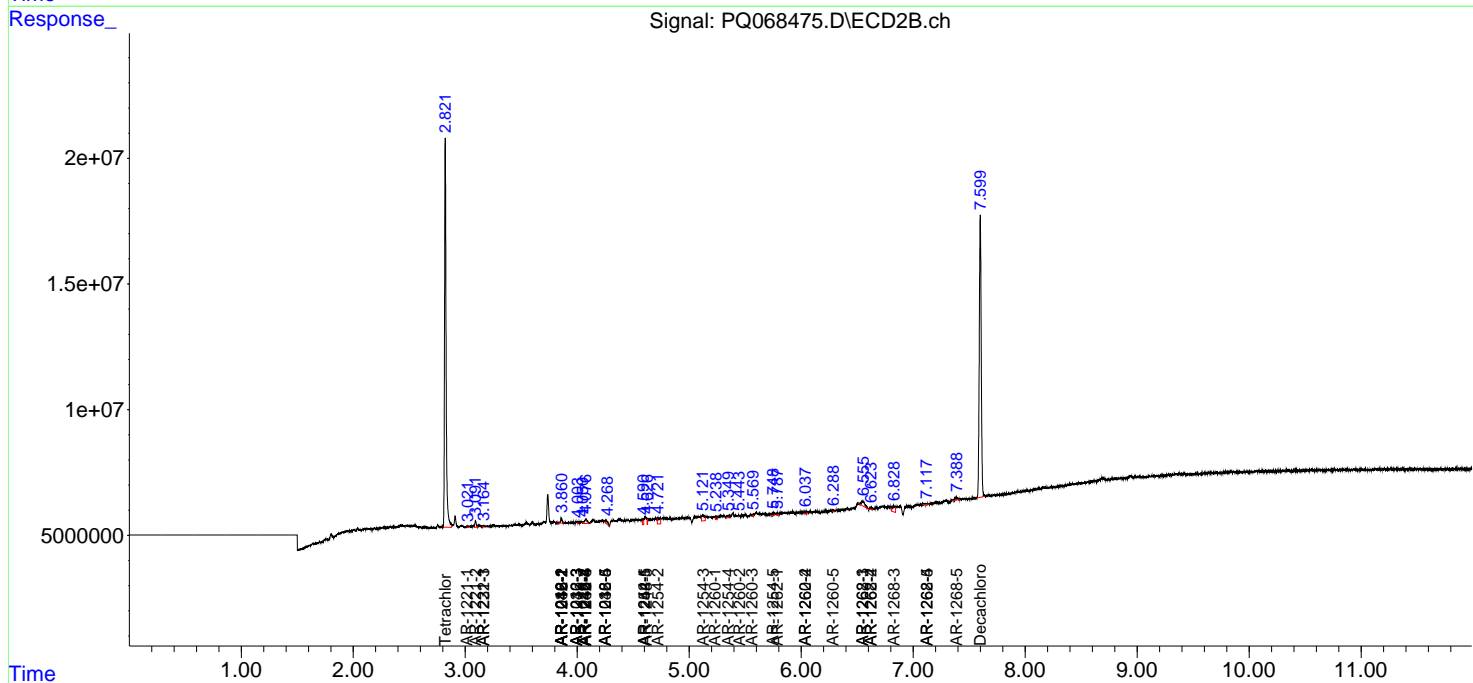
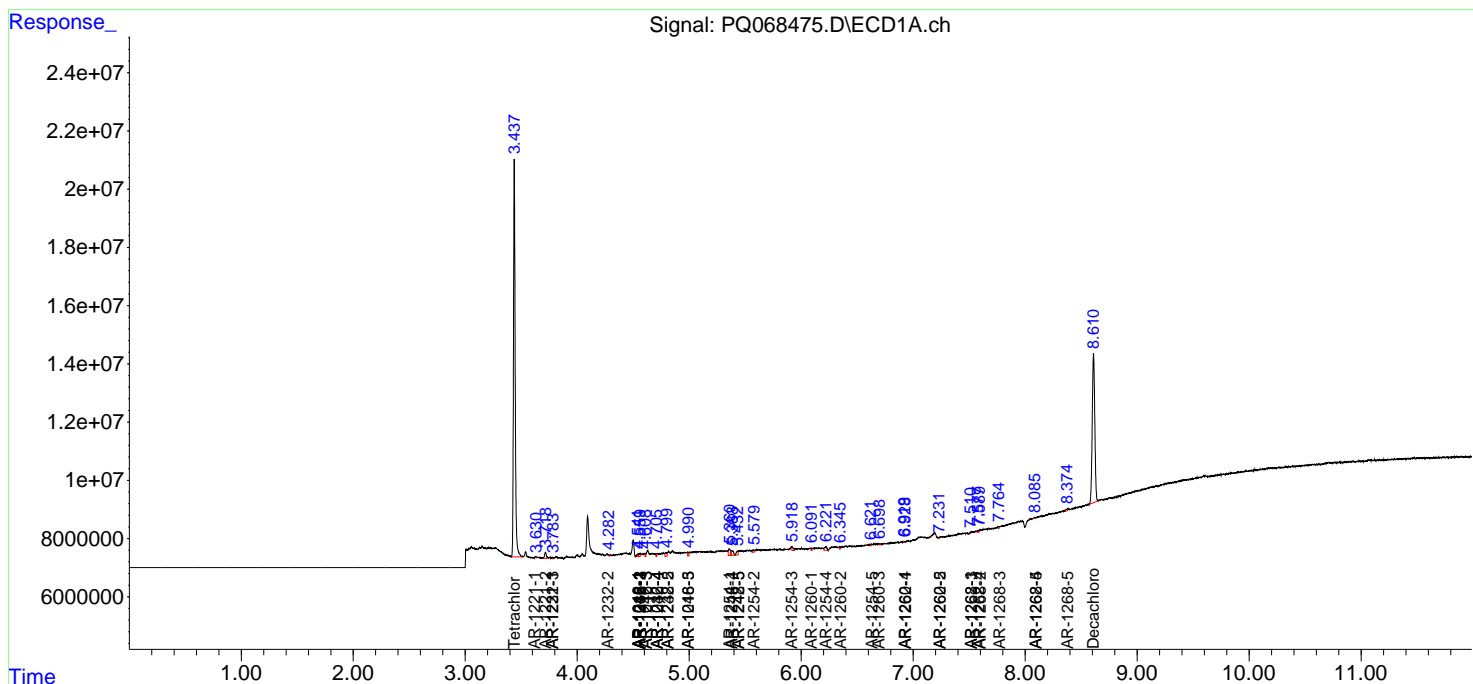
(f)=RT Delta > 1/2 Window (#)=Amounts differ by > 25% (m)=manual int.

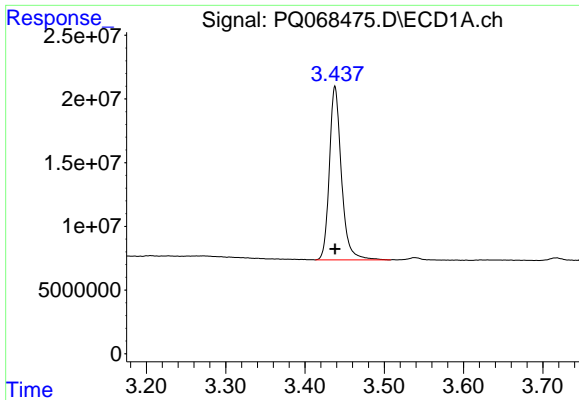
Data Path : Z:\pestpcbsrv\HPCHEM1\ECD_Q\Data\PQ090924\
 Data File : PQ068475.D
 Signal(s) : Signal #1: ECD1A.ch Signal #2: ECD2B.ch
 Acq On : 10 Sep 2024 03:42
 Operator : YP\AJ
 Sample : I.BLK
 Misc :
 ALS Vial : 2 Sample Multiplier: 1

Instrument :
 ECD_Q
 ClientSampleId :
 I.BLK

Integration File signal 1: autoint1.e
 Integration File signal 2: autoint2.e
 Quant Time: Sep 10 07:08:22 2024
 Quant Method : Z:\pestpcbsrv\HPCHEM1\ECD_Q\Method\PQ090624.M
 Quant Title : GC EXTRACTABLES
 QLast Update : Sat Sep 07 07:27:42 2024
 Response via : Initial Calibration
 Integrator: ChemStation

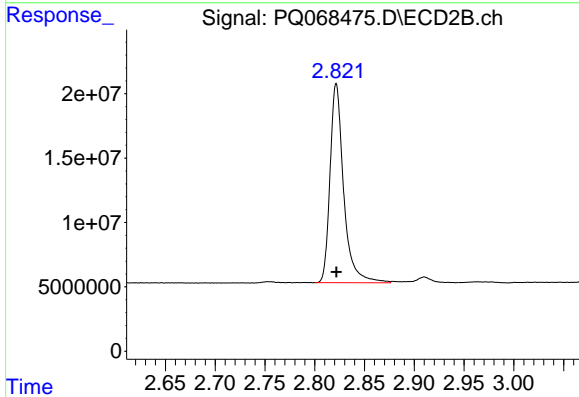
Volume Inj. : 2 µl
 Signal #1 Phase : ZB-MR1 Signal #2 Phase: ZB-MR2
 Signal #1 Info : 30Mx0.32mmx 0.50µ Signal #2 Info : 30M x 0.32mm x 0.25µm



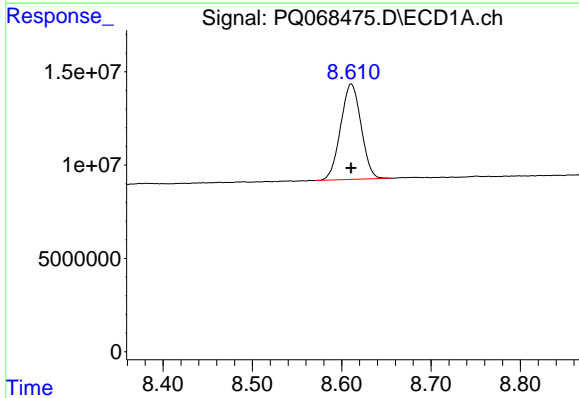


#1 Tetrachloro-m-xylene
 R.T.: 3.438 min
 Delta R.T.: 0.000 min
 Response: 143843611
 Conc: 20.14 ng/ml

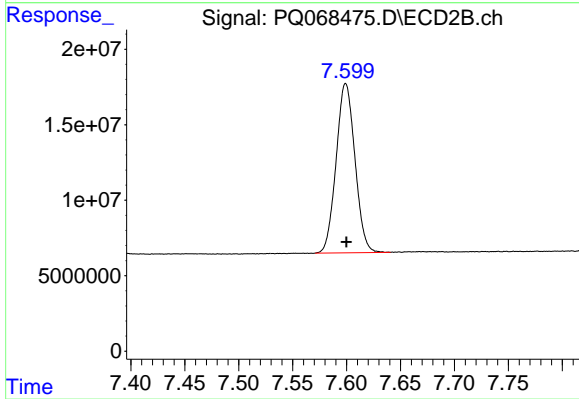
Instrument :
 ECD_Q
 ClientSampleId :
 I.BLK



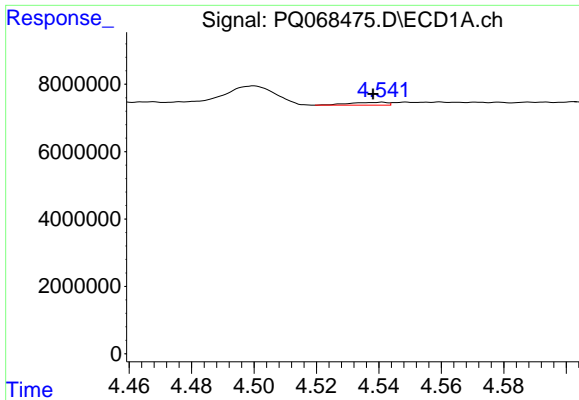
#1 Tetrachloro-m-xylene
 R.T.: 2.822 min
 Delta R.T.: 0.000 min
 Response: 147334166
 Conc: 20.69 ng/ml



#2 Decachlorobiphenyl
 R.T.: 8.611 min
 Delta R.T.: 0.000 min
 Response: 81445874
 Conc: 18.69 ng/ml



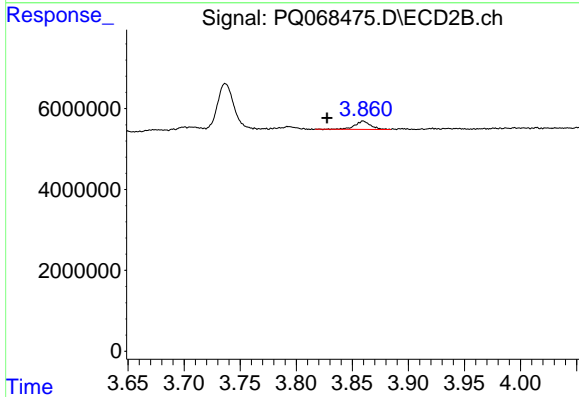
#2 Decachlorobiphenyl
 R.T.: 7.599 min
 Delta R.T.: 0.000 min
 Response: 136345789
 Conc: 20.65 ng/ml



#3 AR-1016-1

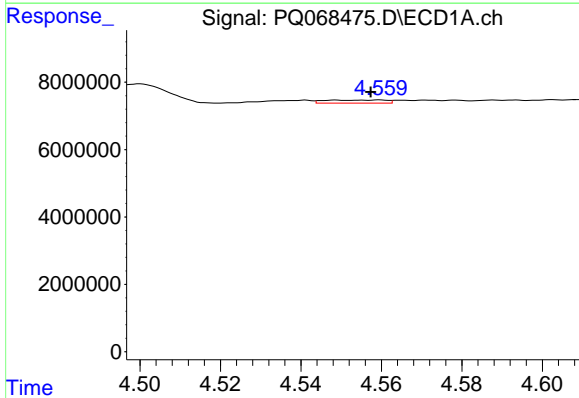
R.T.: 4.541 min
 Delta R.T.: 0.003 min
 Response: 708776
 Conc: 3.03 ng/ml

Instrument :
 ECD_Q
 ClientSampleId :
 I.BLK



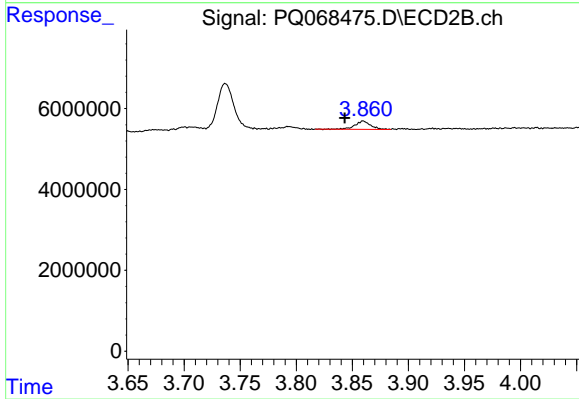
#3 AR-1016-1

R.T.: 3.860 min
 Delta R.T.: 0.032 min
 Response: 1958893
 Conc: 8.25 ng/ml



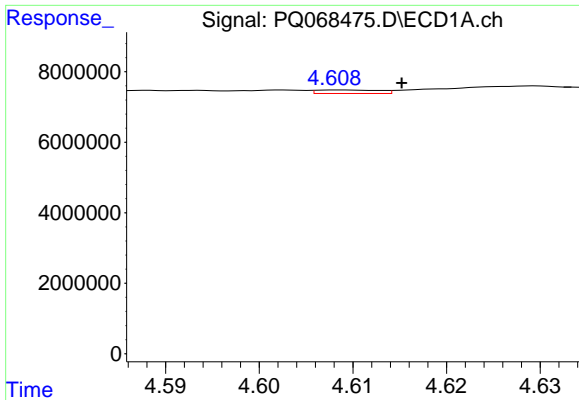
#4 AR-1016-2

R.T.: 4.560 min
 Delta R.T.: 0.002 min
 Response: 942079
 Conc: 2.57 ng/ml



#4 AR-1016-2

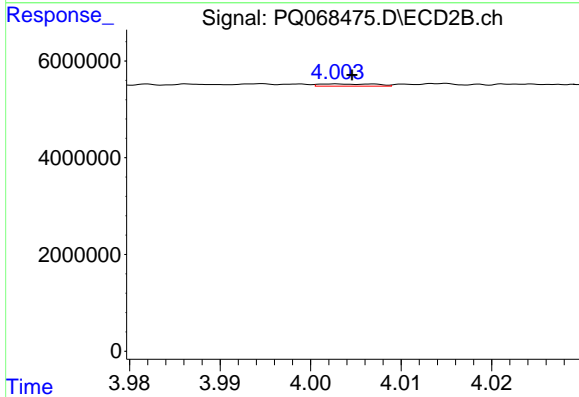
R.T.: 3.860 min
 Delta R.T.: 0.016 min
 Response: 1958893
 Conc: 5.42 ng/ml



#5 AR-1016-3

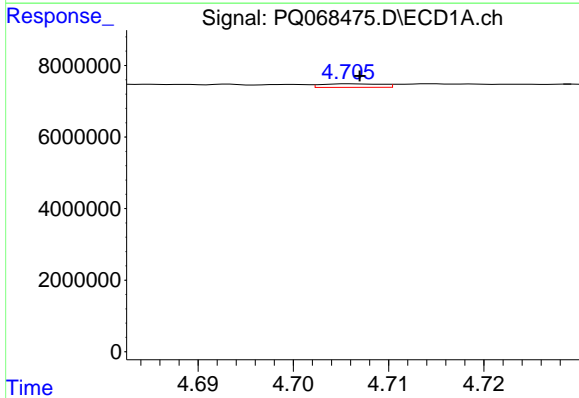
R.T.: 4.609 min
 Delta R.T.: -0.007 min
 Response: 461268
 Conc: 2.04 ng/ml

Instrument :
 ECD_Q
 ClientSampleId :
 I.BLK



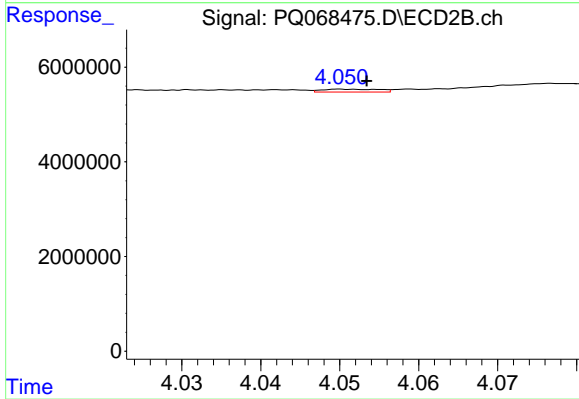
#5 AR-1016-3

R.T.: 4.003 min
 Delta R.T.: -0.002 min
 Response: 204832
 Conc: 1.05 ng/ml



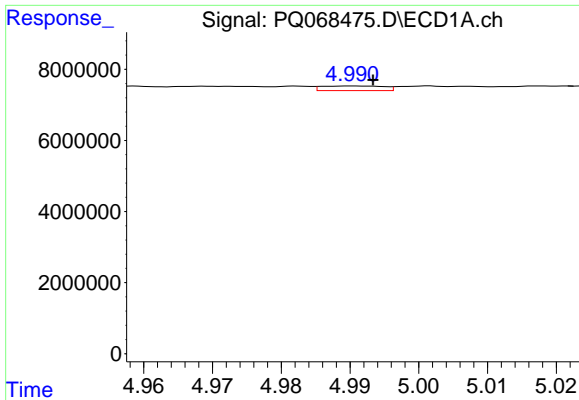
#6 AR-1016-4

R.T.: 4.706 min
 Delta R.T.: 0.000 min
 Response: 435427
 Conc: 2.29 ng/ml



#6 AR-1016-4

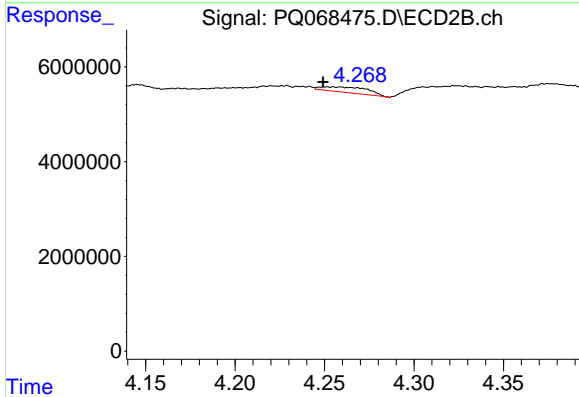
R.T.: 4.050 min
 Delta R.T.: -0.003 min
 Response: 296221
 Conc: 1.83 ng/ml



#7 AR-1016-5

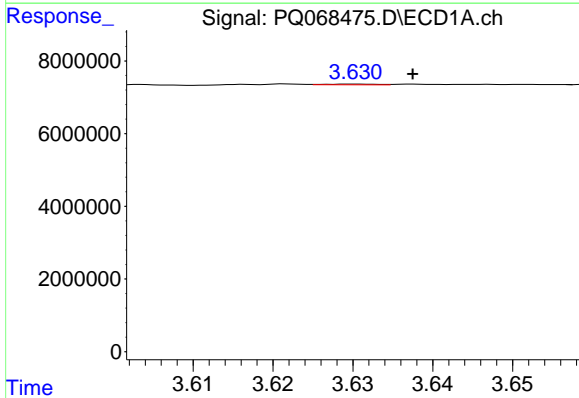
R.T.: 4.991 min
 Delta R.T.: -0.003 min
 Response: 809284
 Conc: 4.58 ng/ml

Instrument :
 ECD_Q
 ClientSampleId :
 I.BLK



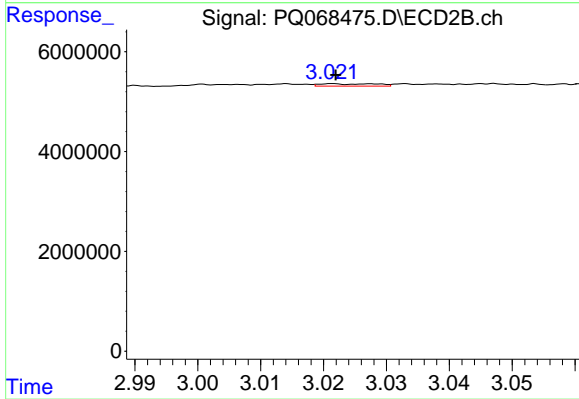
#7 AR-1016-5

R.T.: 4.252 min
 Delta R.T.: 0.003 min
 Response: 2064764
 Conc: 10.69 ng/ml



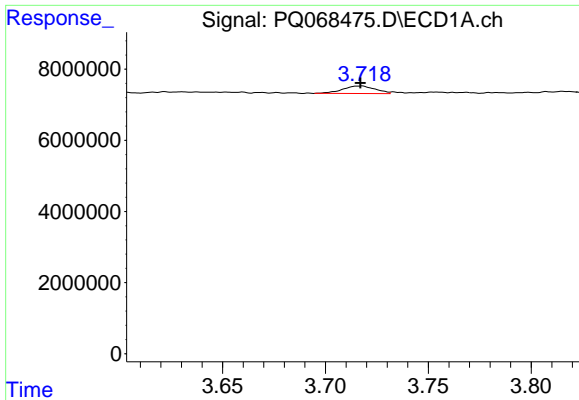
#8 AR-1221-1

R.T.: 3.630 min
 Delta R.T.: -0.007 min
 Response: 90259
 Conc: 1.08 ng/ml



#8 AR-1221-1

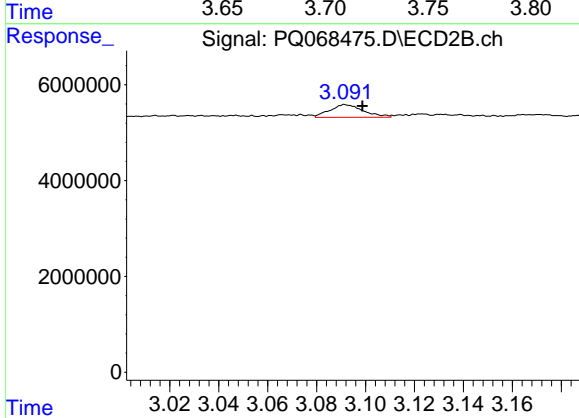
R.T.: 3.022 min
 Delta R.T.: 0.000 min
 Response: 296615
 Conc: 3.26 ng/ml



#9 AR-1221-2

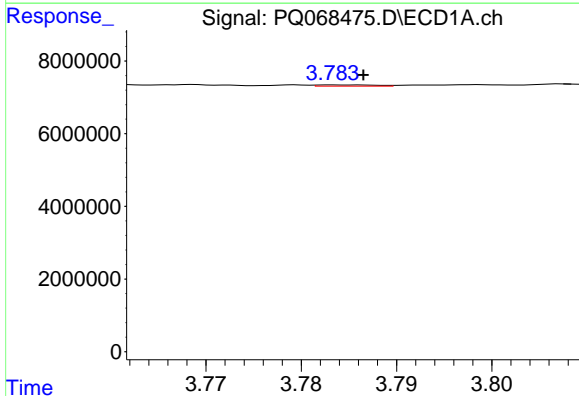
R.T.: 3.718 min
 Delta R.T.: 0.001 min
 Response: 2322664
 Conc: 35.89 ng/ml

Instrument :
 ECD_Q
 ClientSampleId :
 I.BLK



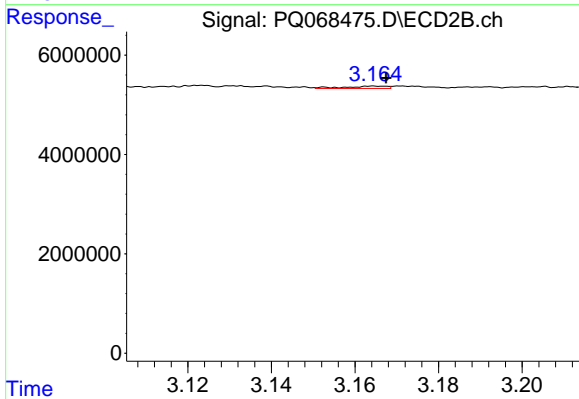
#9 AR-1221-2

R.T.: 3.092 min
 Delta R.T.: -0.007 min
 Response: 2526702
 Conc: 34.98 ng/ml



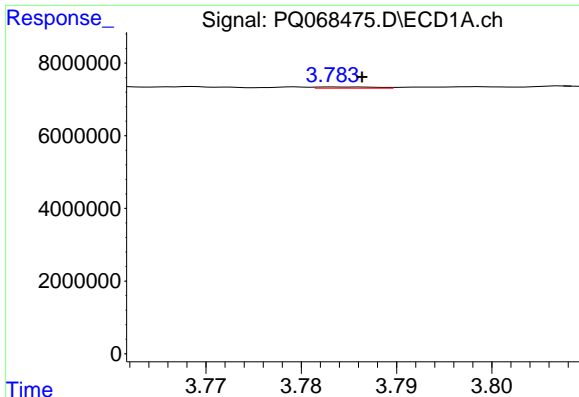
#10 AR-1221-3

R.T.: 3.783 min
 Delta R.T.: -0.003 min
 Response: 151991
 Conc: 0.77 ng/ml



#10 AR-1221-3

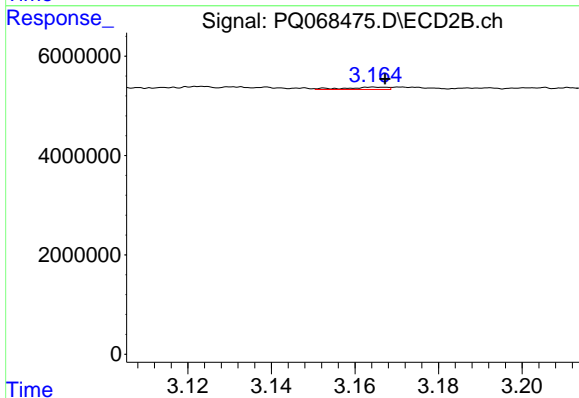
R.T.: 3.165 min
 Delta R.T.: -0.003 min
 Response: 328371
 Conc: 1.62 ng/ml



#11 AR-1232-1

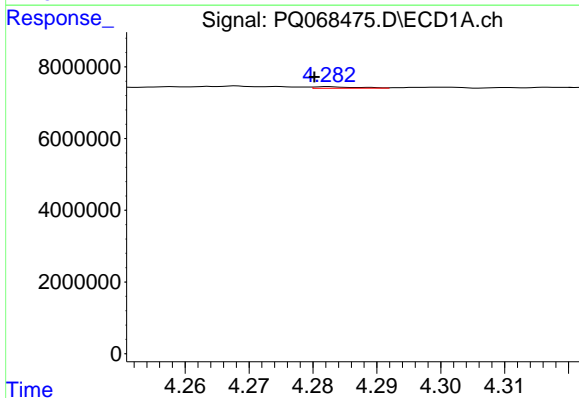
R.T.: 3.783 min
 Delta R.T.: -0.003 min
 Response: 151991
 Conc: 0.95 ng/ml

Instrument :
 ECD_Q
 ClientSampleId :
 I.BLK



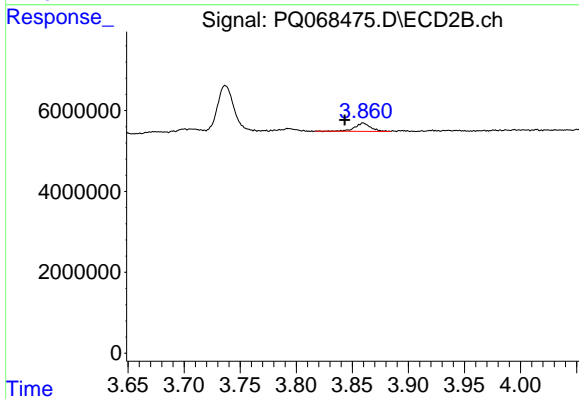
#11 AR-1232-1

R.T.: 3.165 min
 Delta R.T.: -0.003 min
 Response: 328371
 Conc: 2.02 ng/ml



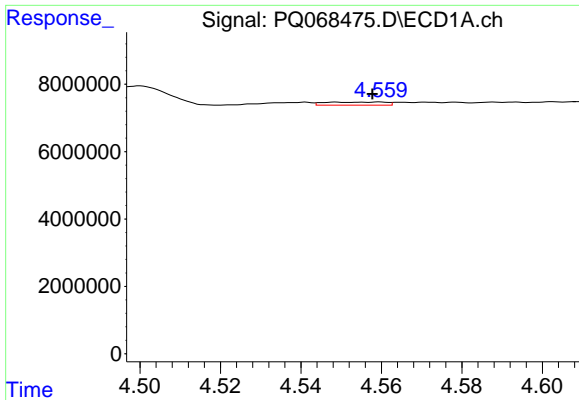
#12 AR-1232-2

R.T.: 4.282 min
 Delta R.T.: 0.002 min
 Response: 192248
 Conc: 2.18 ng/ml



#12 AR-1232-2

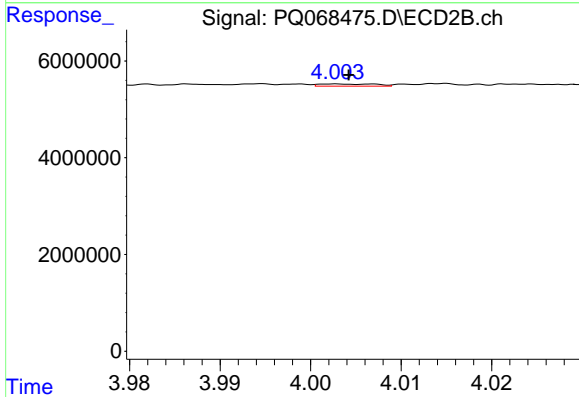
R.T.: 3.860 min
 Delta R.T.: 0.016 min
 Response: 1958893
 Conc: 12.45 ng/ml



#13 AR-1232-3

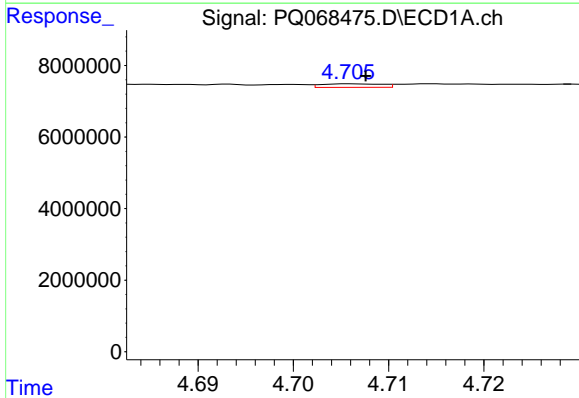
R.T.: 4.560 min
 Delta R.T.: 0.002 min
 Response: 942079
 Conc: 5.85 ng/ml

Instrument :
 ECD_Q
 ClientSampleId :
 I.BLK



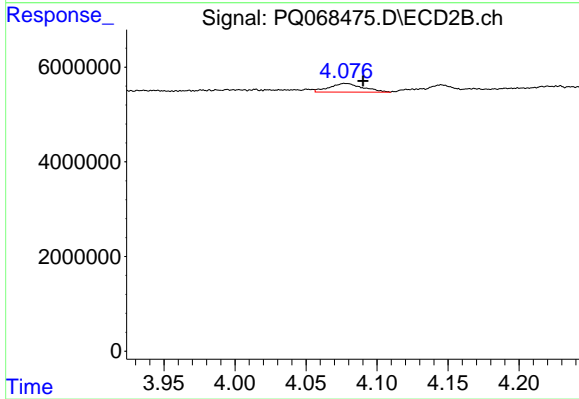
#13 AR-1232-3

R.T.: 4.003 min
 Delta R.T.: -0.001 min
 Response: 204832
 Conc: 2.46 ng/ml



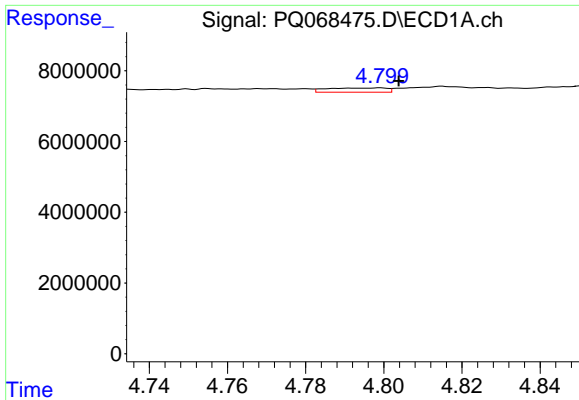
#14 AR-1232-4

R.T.: 4.706 min
 Delta R.T.: -0.002 min
 Response: 435427
 Conc: 5.44 ng/ml



#14 AR-1232-4

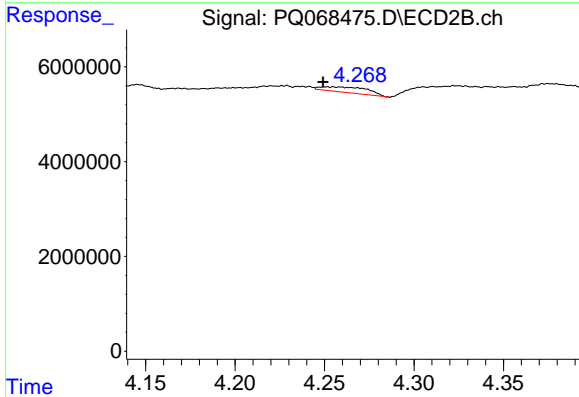
R.T.: 4.077 min
 Delta R.T.: -0.013 min
 Response: 2968400
 Conc: 42.05 ng/ml



#15 AR-1232-5

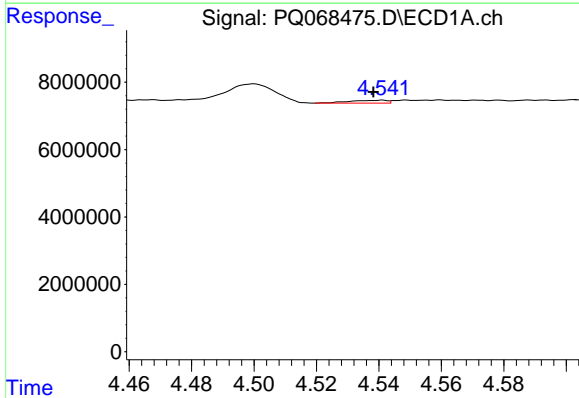
R.T.: 4.799 min
 Delta R.T.: -0.005 min
 Response: 1293753
 Conc: 24.00 ng/ml

Instrument :
 ECD_Q
 ClientSampleId :
 I.BLK



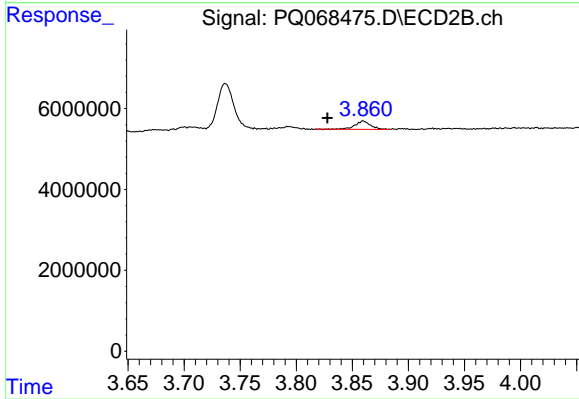
#15 AR-1232-5

R.T.: 4.252 min
 Delta R.T.: 0.003 min
 Response: 2064764
 Conc: 26.13 ng/ml



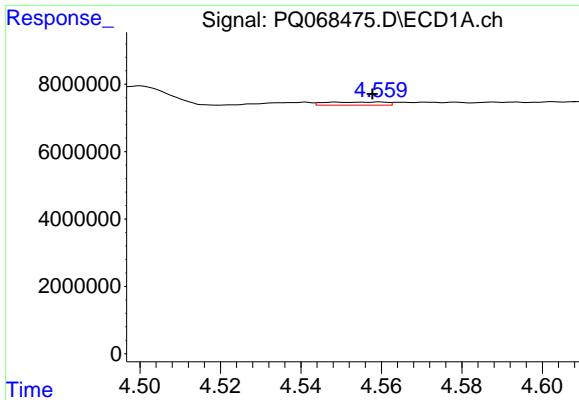
#16 AR-1242-1

R.T.: 4.541 min
 Delta R.T.: 0.003 min
 Response: 708776
 Conc: 3.92 ng/ml



#16 AR-1242-1

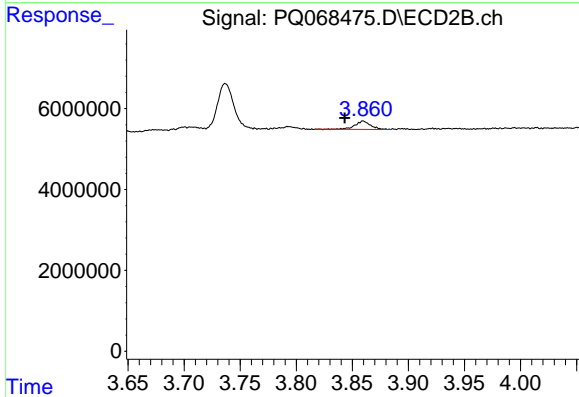
R.T.: 3.860 min
 Delta R.T.: 0.032 min
 Response: 1958893
 Conc: 10.72 ng/ml



#17 AR-1242-2

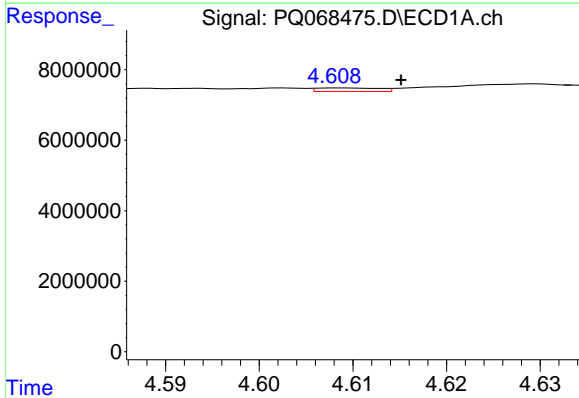
R.T.: 4.560 min
 Delta R.T.: 0.002 min
 Response: 942079
 Conc: 3.38 ng/ml

Instrument :
 ECD_Q
 ClientSampleId :
 I.BLK



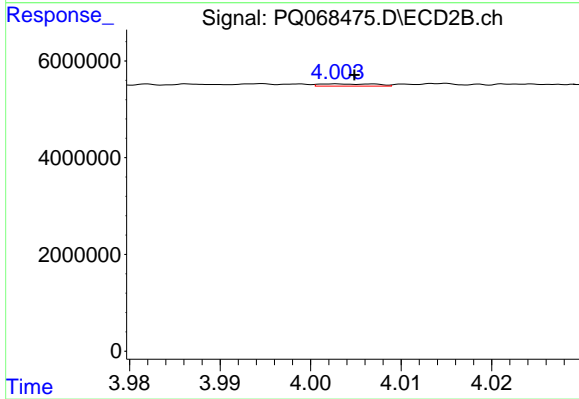
#17 AR-1242-2

R.T.: 3.860 min
 Delta R.T.: 0.016 min
 Response: 1958893
 Conc: 7.24 ng/ml



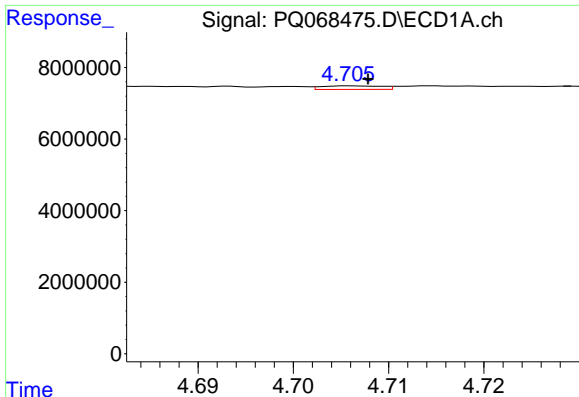
#18 AR-1242-3

R.T.: 4.609 min
 Delta R.T.: -0.007 min
 Response: 461268
 Conc: 2.68 ng/ml



#18 AR-1242-3

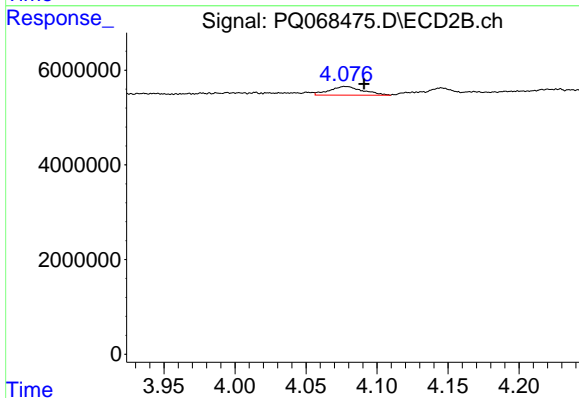
R.T.: 4.003 min
 Delta R.T.: -0.002 min
 Response: 204832
 Conc: 1.39 ng/ml



#19 AR-1242-4

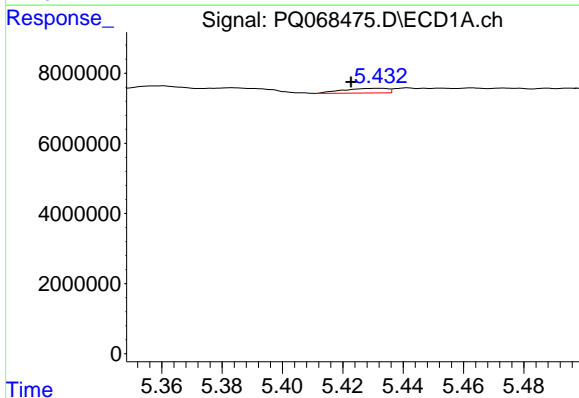
R.T.: 4.706 min
 Delta R.T.: -0.002 min
 Response: 435427
 Conc: 3.07 ng/ml

Instrument :
 ECD_Q
 ClientSampleId :
 I.BLK



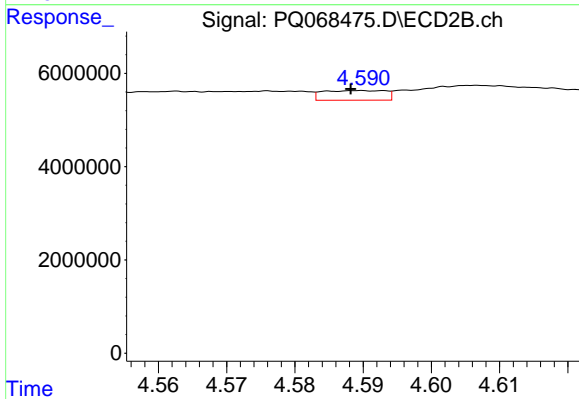
#19 AR-1242-4

R.T.: 4.077 min
 Delta R.T.: -0.014 min
 Response: 2968400
 Conc: 21.28 ng/ml



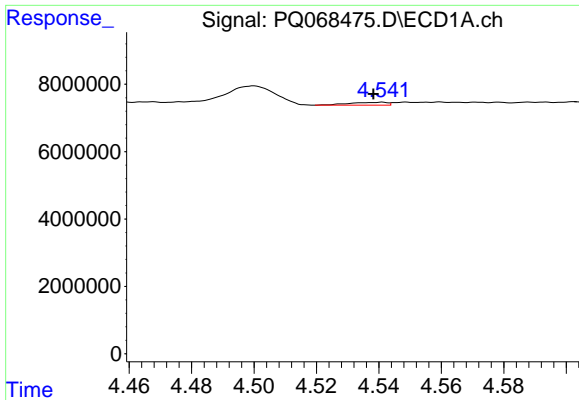
#20 AR-1242-5

R.T.: 5.432 min
 Delta R.T.: 0.010 min
 Response: 1360010
 Conc: 9.44 ng/ml



#20 AR-1242-5

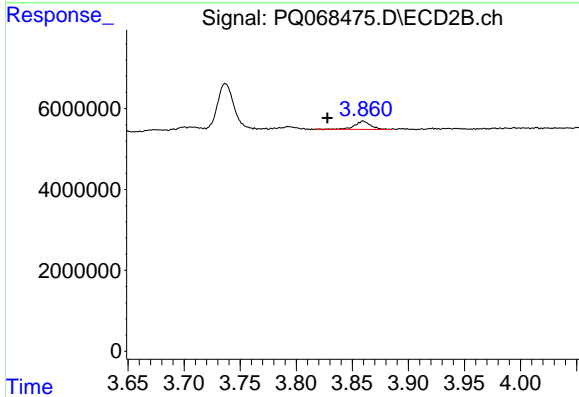
R.T.: 4.590 min
 Delta R.T.: 0.001 min
 Response: 1318824
 Conc: 7.02 ng/ml



#21 AR-1248-1

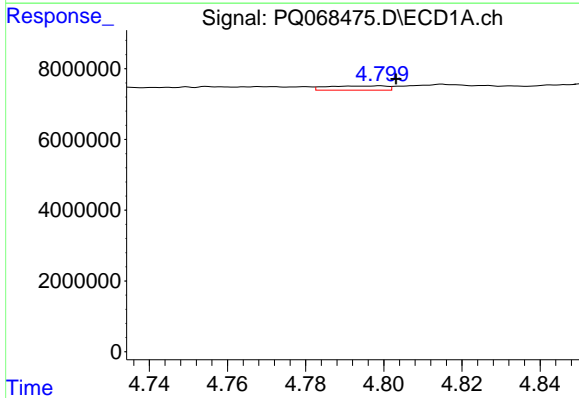
R.T.: 4.541 min
 Delta R.T.: 0.003 min
 Response: 708776
 Conc: 5.06 ng/ml

Instrument :
 ECD_Q
 ClientSampleId :
 I.BLK



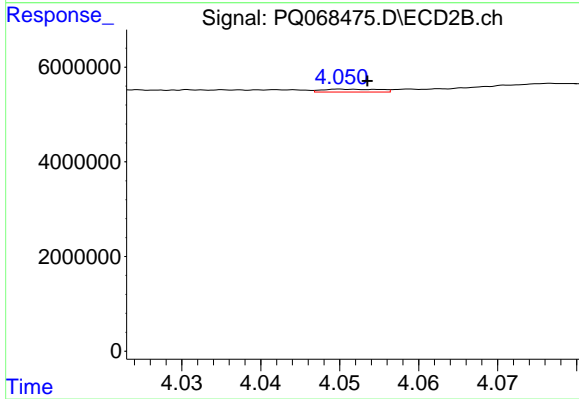
#21 AR-1248-1

R.T.: 3.860 min
 Delta R.T.: 0.032 min
 Response: 1958893
 Conc: 13.71 ng/ml



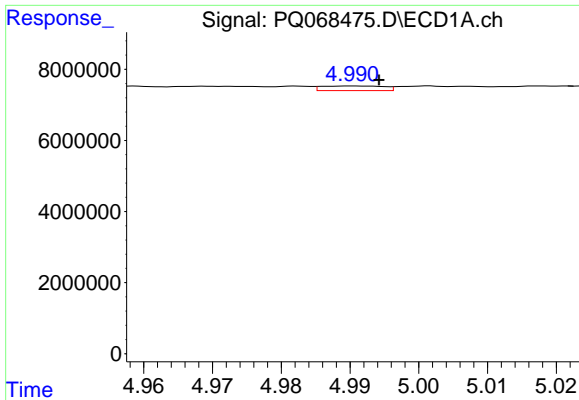
#22 AR-1248-2

R.T.: 4.799 min
 Delta R.T.: -0.004 min
 Response: 1293753
 Conc: 6.64 ng/ml



#22 AR-1248-2

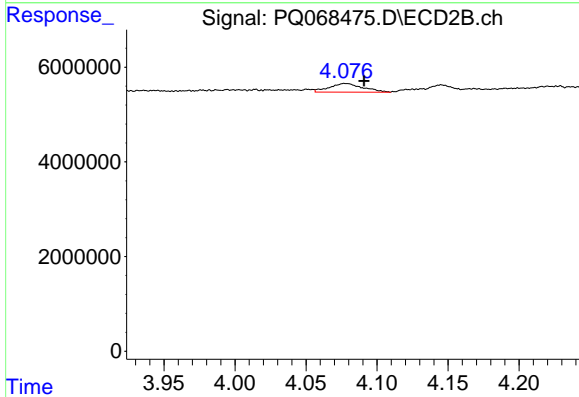
R.T.: 4.050 min
 Delta R.T.: -0.003 min
 Response: 296221
 Conc: 1.38 ng/ml



#23 AR-1248-3

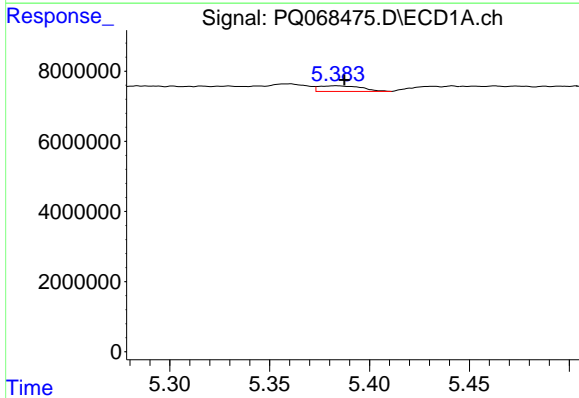
R.T.: 4.991 min
 Delta R.T.: -0.004 min
 Response: 809284
 Conc: 3.45 ng/ml

Instrument :
 ECD_Q
 ClientSampleId :
 I.BLK



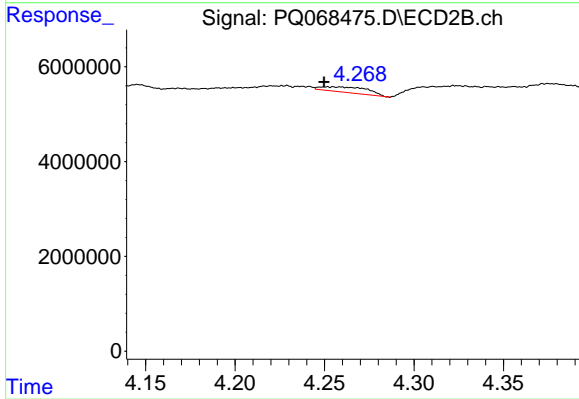
#23 AR-1248-3

R.T.: 4.077 min
 Delta R.T.: -0.014 min
 Response: 2968400
 Conc: 14.30 ng/ml



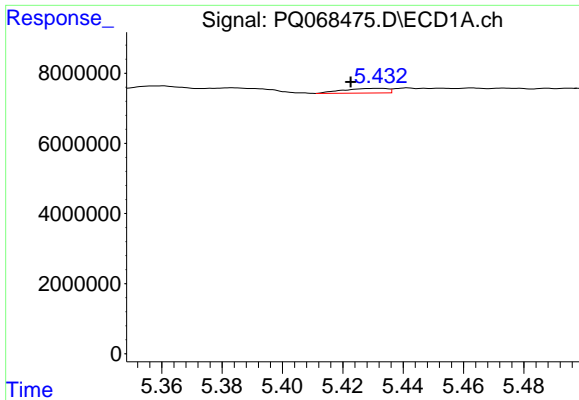
#24 AR-1248-4

R.T.: 5.383 min
 Delta R.T.: -0.004 min
 Response: 2383673
 Conc: 9.23 ng/ml



#24 AR-1248-4

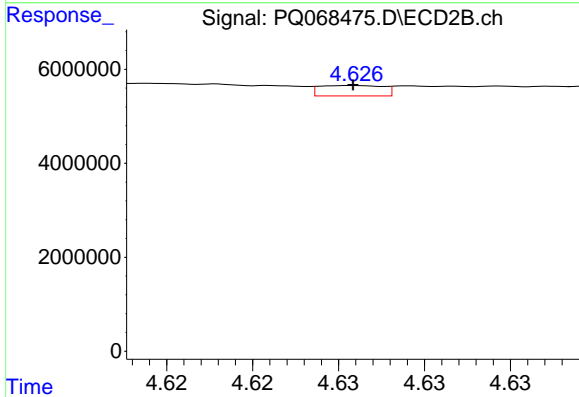
R.T.: 4.252 min
 Delta R.T.: 0.002 min
 Response: 2064764
 Conc: 8.08 ng/ml



#25 AR-1248-5

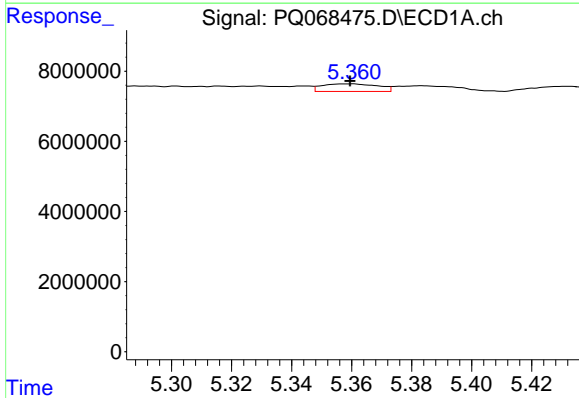
R.T.: 5.432 min
 Delta R.T.: 0.010 min
 Response: 1360010
 Conc: 5.37 ng/ml

Instrument :
 ECD_Q
 ClientSampleId :
 I.BLK



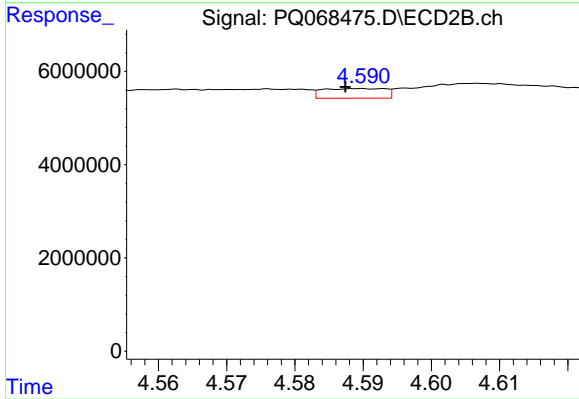
#25 AR-1248-5

R.T.: 4.626 min
 Delta R.T.: 0.000 min
 Response: 574380
 Conc: 2.25 ng/ml



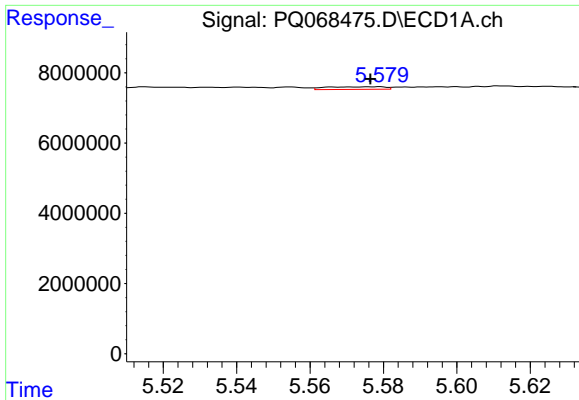
#26 AR-1254-1

R.T.: 5.360 min
 Delta R.T.: 0.000 min
 Response: 2820907
 Conc: 11.01 ng/ml



#26 AR-1254-1

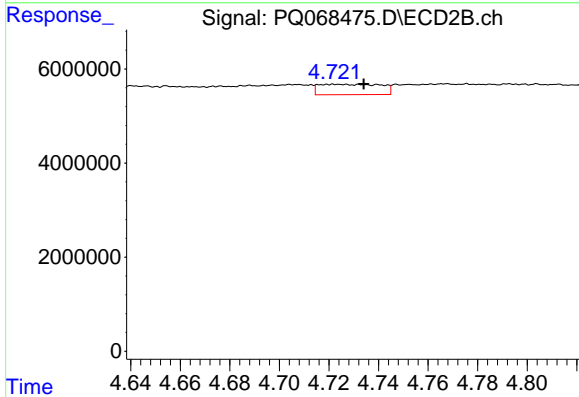
R.T.: 4.590 min
 Delta R.T.: 0.002 min
 Response: 1318824
 Conc: 3.54 ng/ml



#27 AR-1254-2

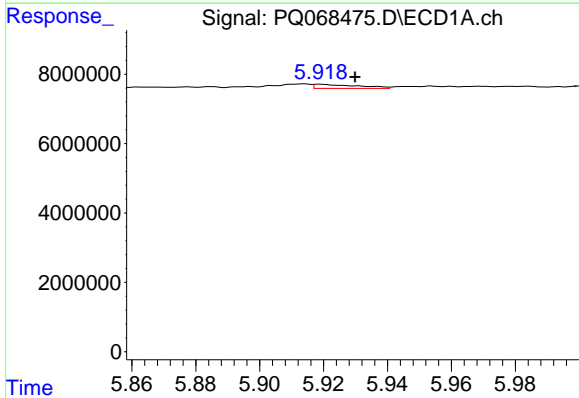
R.T.: 5.579 min
 Delta R.T.: 0.003 min
 Response: 809272
 Conc: 2.07 ng/ml

Instrument :
 ECD_Q
 ClientSampleId :
 I.BLK



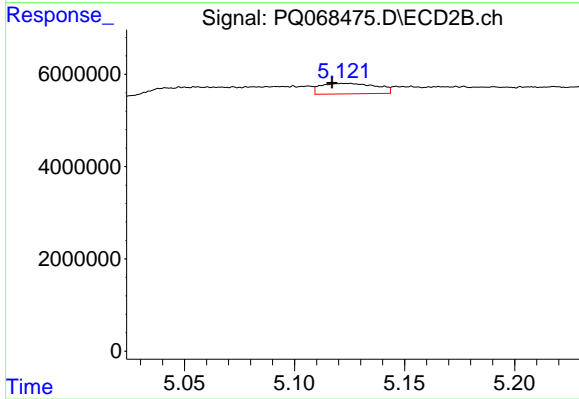
#27 AR-1254-2

R.T.: 4.722 min
 Delta R.T.: -0.012 min
 Response: 3824779
 Conc: 11.47 ng/ml



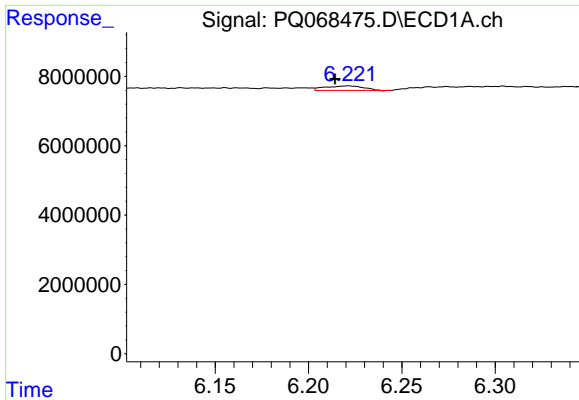
#28 AR-1254-3

R.T.: 5.919 min
 Delta R.T.: -0.011 min
 Response: 1098830
 Conc: 2.70 ng/ml



#28 AR-1254-3

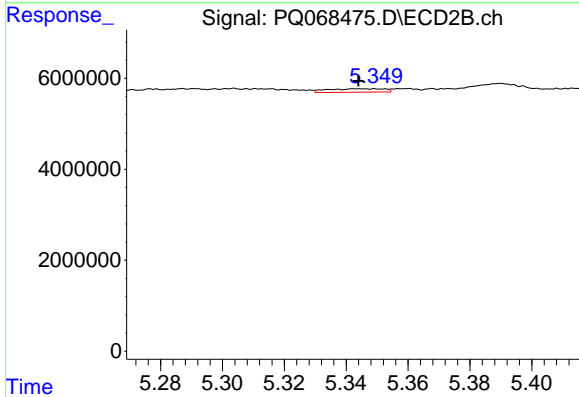
R.T.: 5.125 min
 Delta R.T.: 0.008 min
 Response: 3955467
 Conc: 7.70 ng/ml



#29 AR-1254-4

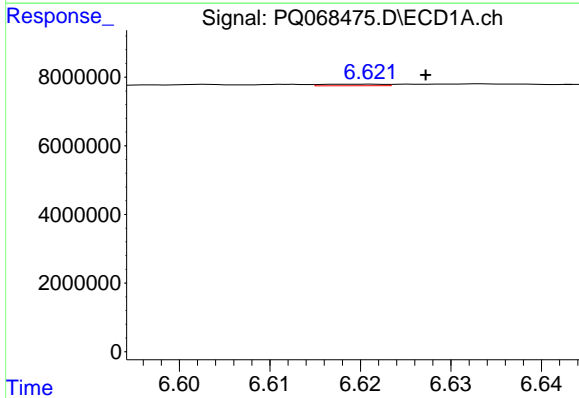
R.T.: 6.221 min
 Delta R.T.: 0.007 min
 Response: 1852870
 Conc: 6.43 ng/ml

Instrument :
 ECD_Q
 ClientSampleId :
 I.BLK



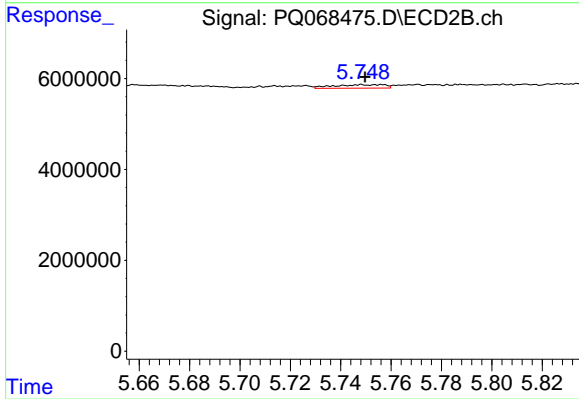
#29 AR-1254-4

R.T.: 5.343 min
 Delta R.T.: -0.001 min
 Response: 955689
 Conc: 3.04 ng/ml



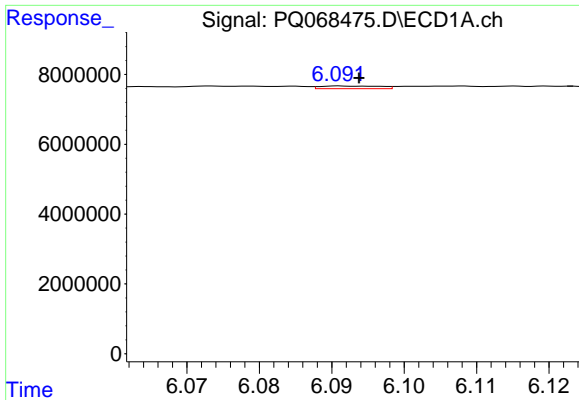
#30 AR-1254-5

R.T.: 6.621 min
 Delta R.T.: -0.006 min
 Response: 220162
 Conc: 0.67 ng/ml



#30 AR-1254-5

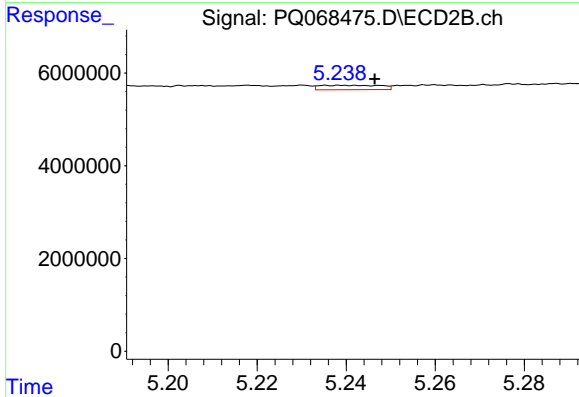
R.T.: 5.748 min
 Delta R.T.: -0.001 min
 Response: 1059053
 Conc: 2.22 ng/ml



#31 AR-1260-1

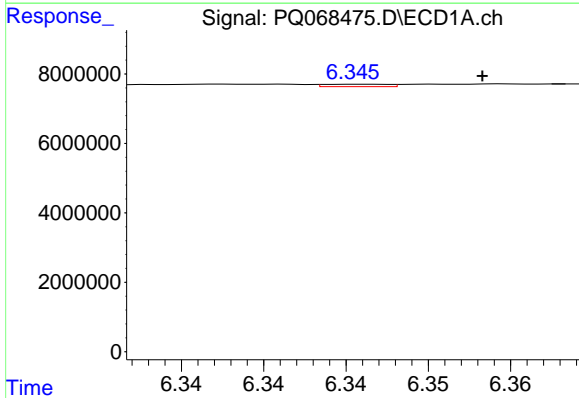
R.T.: 6.091 min
 Delta R.T.: -0.003 min
 Response: 434714
 Conc: 1.31 ng/ml

Instrument :
 ECD_Q
 ClientSampleId :
 I.BLK



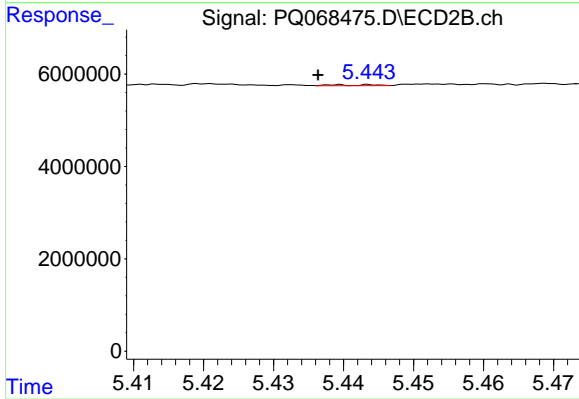
#31 AR-1260-1

R.T.: 5.235 min
 Delta R.T.: -0.011 min
 Response: 915761
 Conc: 2.38 ng/ml



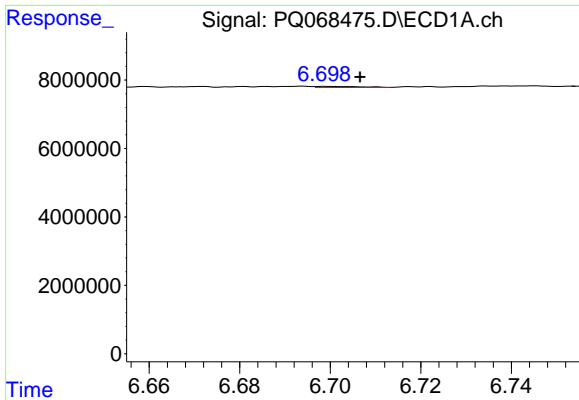
#32 AR-1260-2

R.T.: 6.346 min
 Delta R.T.: -0.007 min
 Response: 184635
 Conc: 0.49 ng/ml



#32 AR-1260-2

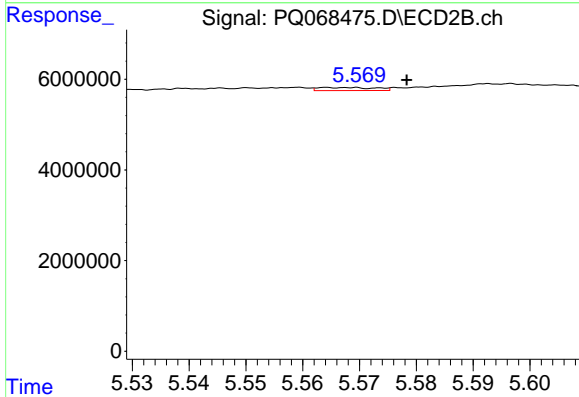
R.T.: 5.439 min
 Delta R.T.: 0.003 min
 Response: 91551
 Conc: 0.20 ng/ml



#33 AR-1260-3

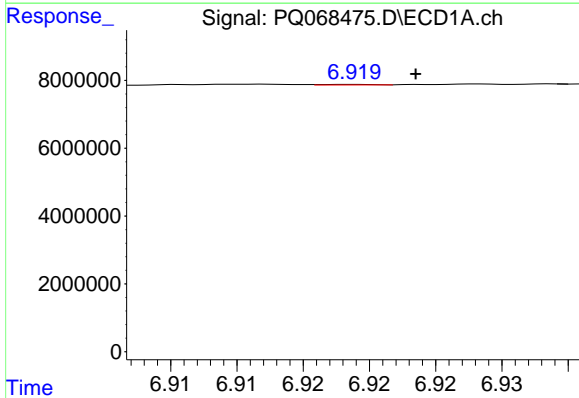
R.T.: 6.699 min
 Delta R.T.: -0.008 min
 Response: 229321
 Conc: 0.98 ng/ml

Instrument :
 ECD_Q
 ClientSampleId :
 I.BLK



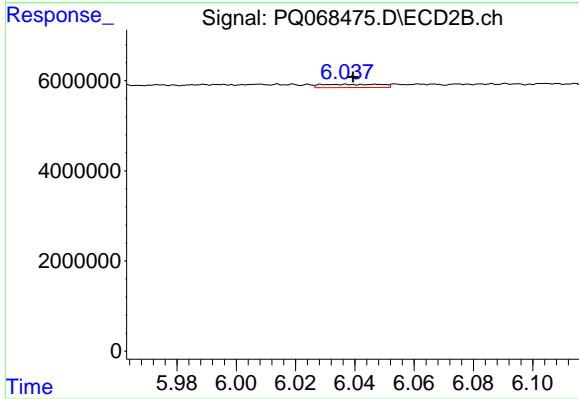
#33 AR-1260-3

R.T.: 5.564 min
 Delta R.T.: -0.014 min
 Response: 472283
 Conc: 1.08 ng/ml



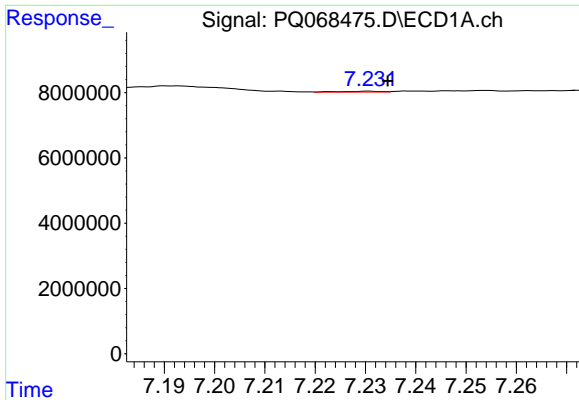
#34 AR-1260-4

R.T.: 6.919 min
 Delta R.T.: -0.005 min
 Response: 43255
 Conc: 0.16 ng/ml



#34 AR-1260-4

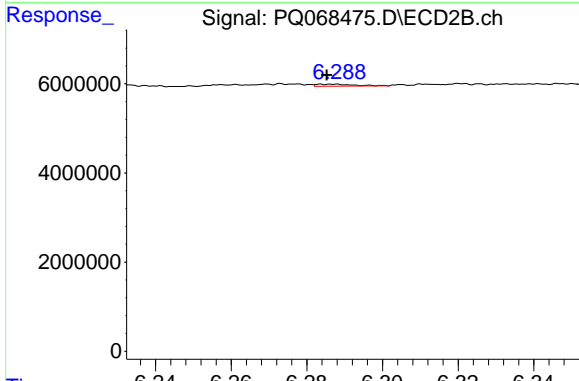
R.T.: 6.037 min
 Delta R.T.: -0.002 min
 Response: 1011541
 Conc: 3.15 ng/ml



#35 AR-1260-5

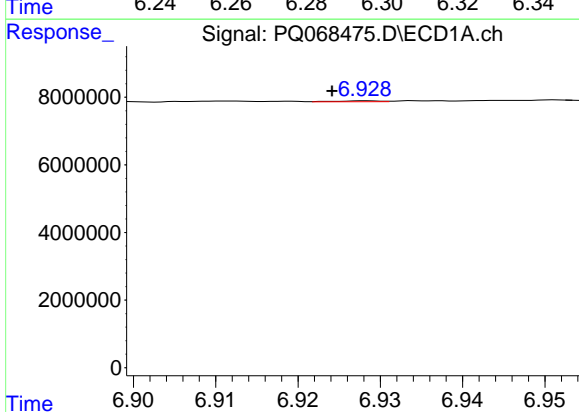
R.T.: 7.231 min
 Delta R.T.: -0.004 min
 Response: 163252
 Conc: 0.31 ng/ml

Instrument :
 ECD_Q
 ClientSampleId :
 I.BLK



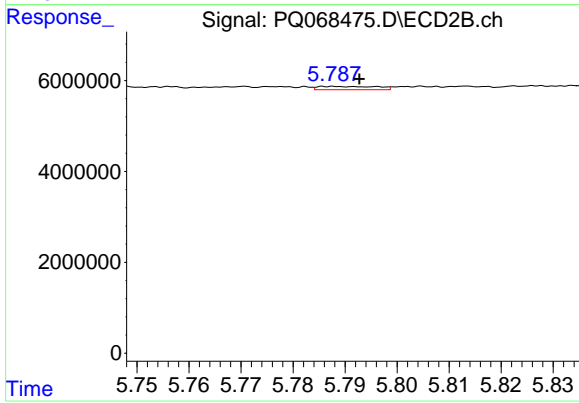
#35 AR-1260-5

R.T.: 6.286 min
 Delta R.T.: 0.001 min
 Response: 322040
 Conc: 0.44 ng/ml



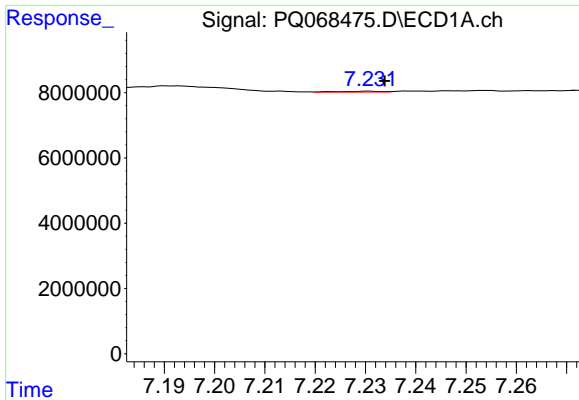
#36 AR-1262-1

R.T.: 6.928 min
 Delta R.T.: 0.004 min
 Response: 81220
 Conc: 0.23 ng/ml



#36 AR-1262-1

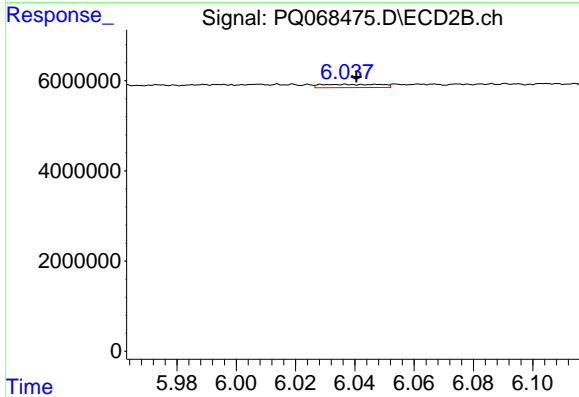
R.T.: 5.788 min
 Delta R.T.: -0.005 min
 Response: 572868
 Conc: 1.18 ng/ml



#37 AR-1262-2

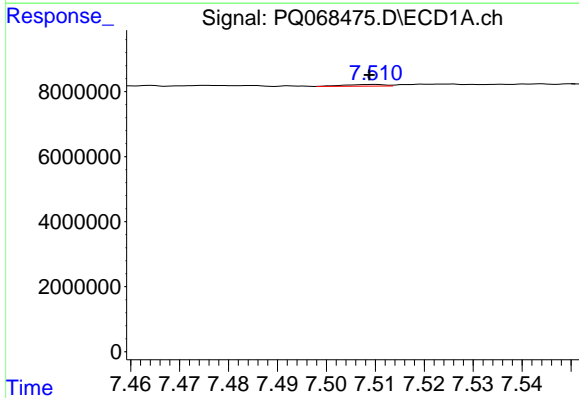
R.T.: 7.231 min
 Delta R.T.: -0.003 min
 Response: 163252
 Conc: 0.25 ng/ml

Instrument :
 ECD_Q
 ClientSampleId :
 I.BLK



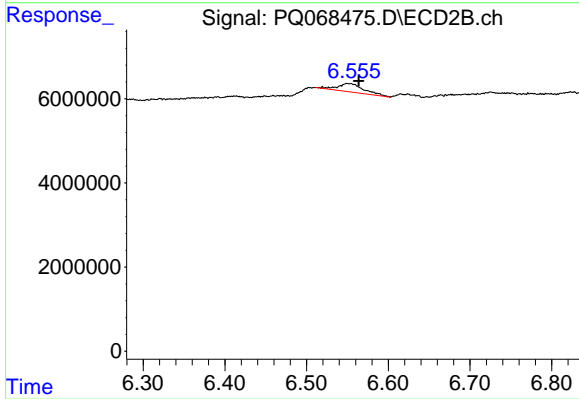
#37 AR-1262-2

R.T.: 6.037 min
 Delta R.T.: -0.004 min
 Response: 1011541
 Conc: 2.27 ng/ml



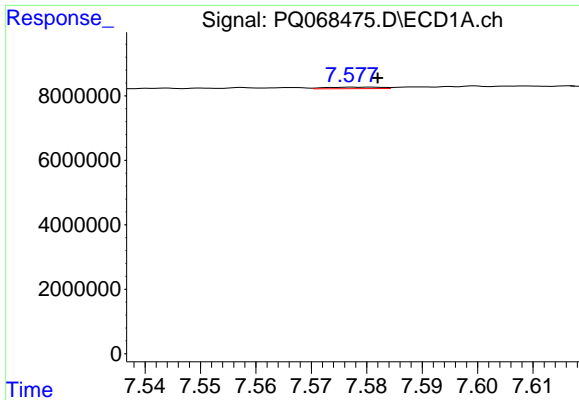
#38 AR-1262-3

R.T.: 7.510 min
 Delta R.T.: 0.000 min
 Response: 297701
 Conc: 0.69 ng/ml



#38 AR-1262-3

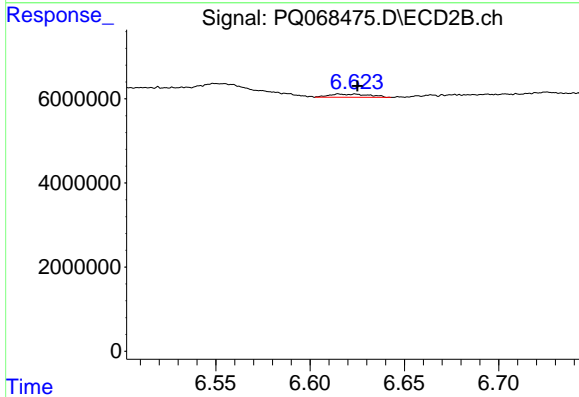
R.T.: 6.550 min
 Delta R.T.: -0.014 min
 Response: 4426796
 Conc: 12.50 ng/ml



#39 AR-1262-4

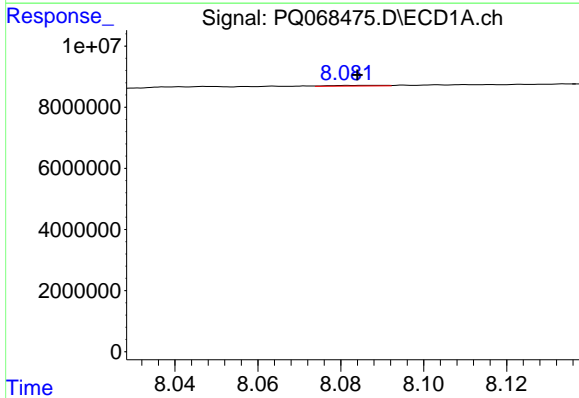
R.T.: 7.577 min
 Delta R.T.: -0.005 min
 Response: 324214
 Conc: 0.97 ng/ml

Instrument :
 ECD_Q
 ClientSampleId :
 I.BLK



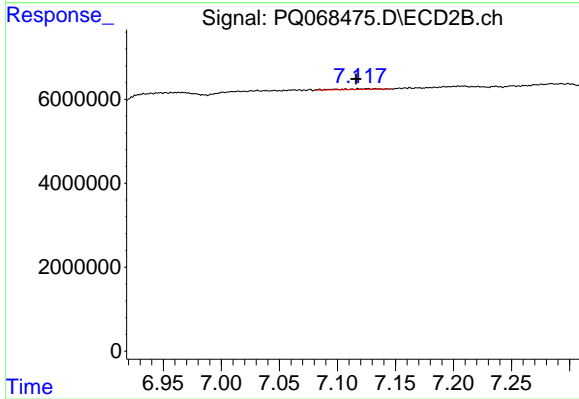
#39 AR-1262-4

R.T.: 6.615 min
 Delta R.T.: -0.010 min
 Response: 1097663
 Conc: 1.66 ng/ml



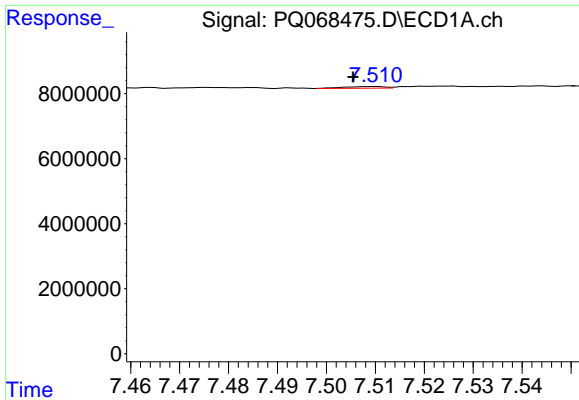
#40 AR-1262-5

R.T.: 8.089 min
 Delta R.T.: 0.005 min
 Response: 200344
 Conc: 0.95 ng/ml



#40 AR-1262-5

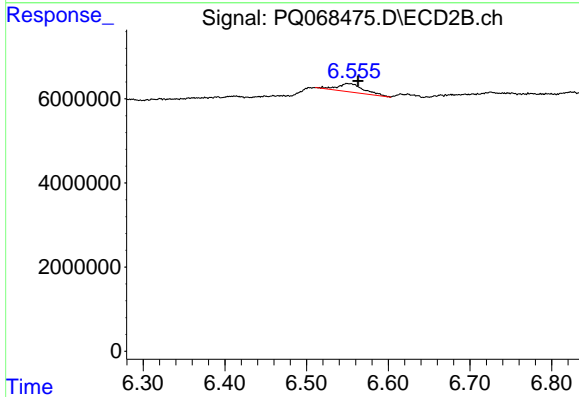
R.T.: 7.133 min
 Delta R.T.: 0.017 min
 Response: 402407
 Conc: 1.32 ng/ml



#41 AR-1268-1

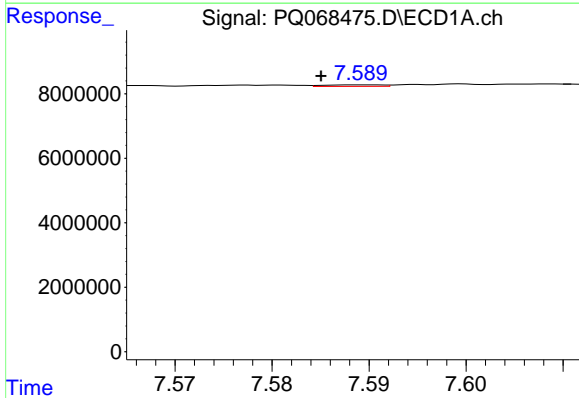
R.T.: 7.510 min
 Delta R.T.: 0.004 min
 Response: 297701
 Conc: 0.41 ng/ml

Instrument :
 ECD_Q
 ClientSampleId :
 I.BLK



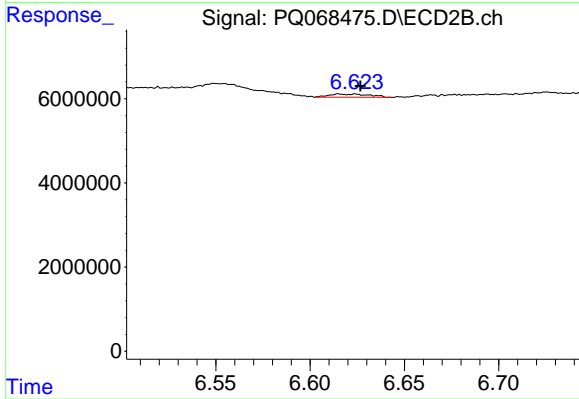
#41 AR-1268-1

R.T.: 6.550 min
 Delta R.T.: -0.013 min
 Response: 4426796
 Conc: 4.35 ng/ml



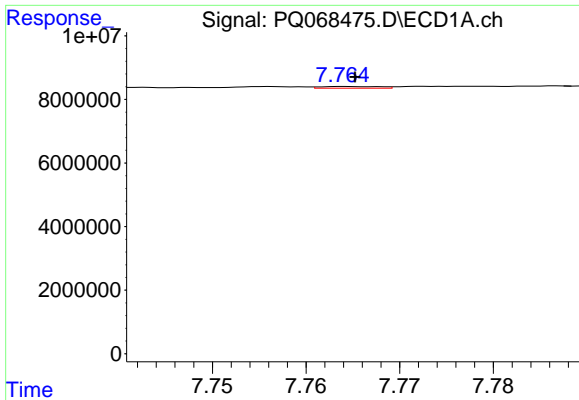
#42 AR-1268-2

R.T.: 7.589 min
 Delta R.T.: 0.004 min
 Response: 192561
 Conc: 0.29 ng/ml



#42 AR-1268-2

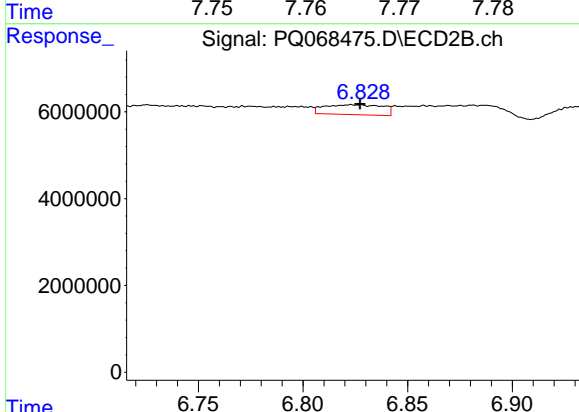
R.T.: 6.615 min
 Delta R.T.: -0.011 min
 Response: 1097663
 Conc: 1.21 ng/ml



#43 AR-1268-3

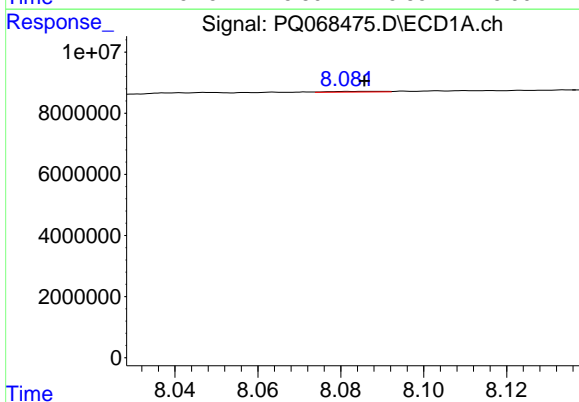
R.T.: 7.764 min
 Delta R.T.: -0.001 min
 Response: 244861
 Conc: 0.45 ng/ml

Instrument :
 ECD_Q
 ClientSampleId :
 I.BLK



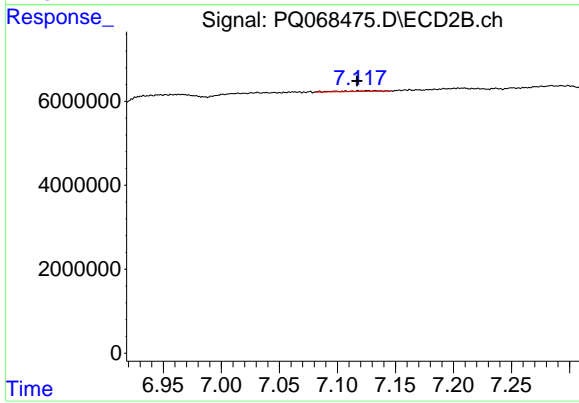
#43 AR-1268-3

R.T.: 6.823 min
 Delta R.T.: -0.004 min
 Response: 4411180
 Conc: 5.55 ng/ml



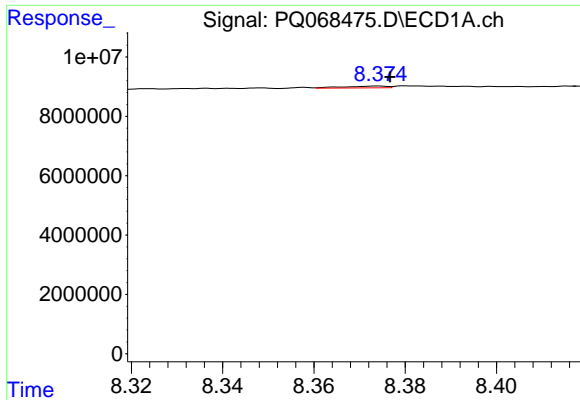
#44 AR-1268-4

R.T.: 8.089 min
 Delta R.T.: 0.003 min
 Response: 200344
 Conc: 0.93 ng/ml



#44 AR-1268-4

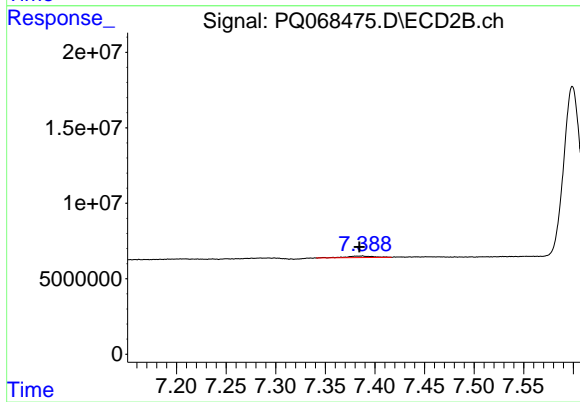
R.T.: 7.133 min
 Delta R.T.: 0.016 min
 Response: 402407
 Conc: 1.27 ng/ml



#45 AR-1268-5

R.T.: 8.374 min
Delta R.T.: -0.002 min
Response: 428575
Conc: 0.27 ng/ml

Instrument :
ECD_Q
ClientSampleId :
I.BLK



#45 AR-1268-5

R.T.: 7.387 min
Delta R.T.: 0.003 min
Response: 1985048
Conc: 0.84 ng/ml