

Data Path : Z:\pestpcbsrv\HPCHEM1\ECD_Q\Data\PQ091024\
 Data File : PQ068513.D
 Signal(s) : Signal #1: ECD1A.ch Signal #2: ECD2B.ch
 Acq On : 10 Sep 2024 14:10
 Operator : YP\AJ
 Sample : P3887-01DL 20X
 Misc :
 ALS Vial : 8 Sample Multiplier: 1

Instrument :
 ECD_Q
 ClientSampleId :
 60201DL

Integration File signal 1: autoint1.e
 Integration File signal 2: autoint2.e
 Quant Time: Sep 11 01:20:36 2024
 Quant Method : Z:\pestpcbsrv\HPCHEM1\ECD_Q\Method\PQ090624.M
 Quant Title : GC EXTRACTABLES
 QLast Update : Tue Sep 10 13:06:53 2024
 Response via : Initial Calibration
 Integrator: ChemStation

Volume Inj. : 2 µl
 Signal #1 Phase : ZB-MR1 Signal #2 Phase: ZB-MR2
 Signal #1 Info : 30Mx0.32mmx 0.50µ Signal #2 Info : 30M x 0.32mm x 0.25µm

Compound	RT#1	RT#2	Resp#1	Resp#2	ng/ml	ng/ml

System Monitoring Compounds						
1) SA Tetrachlo...	3.437	2.822	9080287	6615016	1.272	0.929 #
2) SA Decachlor...	8.611	7.599	3394870	6564577	0.779	0.994 #
Target Compounds						
16) L4 AR-1242-1	4.537	3.826	138.5E6	140.8E6	766.391	770.599
17) L4 AR-1242-2	4.557	3.842	206.1E6	202.0E6	740.426	747.038
18) L4 AR-1242-3	4.615	4.003	156.0E6	140.5E6	907.362	954.927
19) L4 AR-1242-4	4.707	4.089	146.4E6	121.8E6	1031.615	872.847
20) L4 AR-1242-5	5.421	4.586	145.2E6	196.6E6	1007.354	1046.215

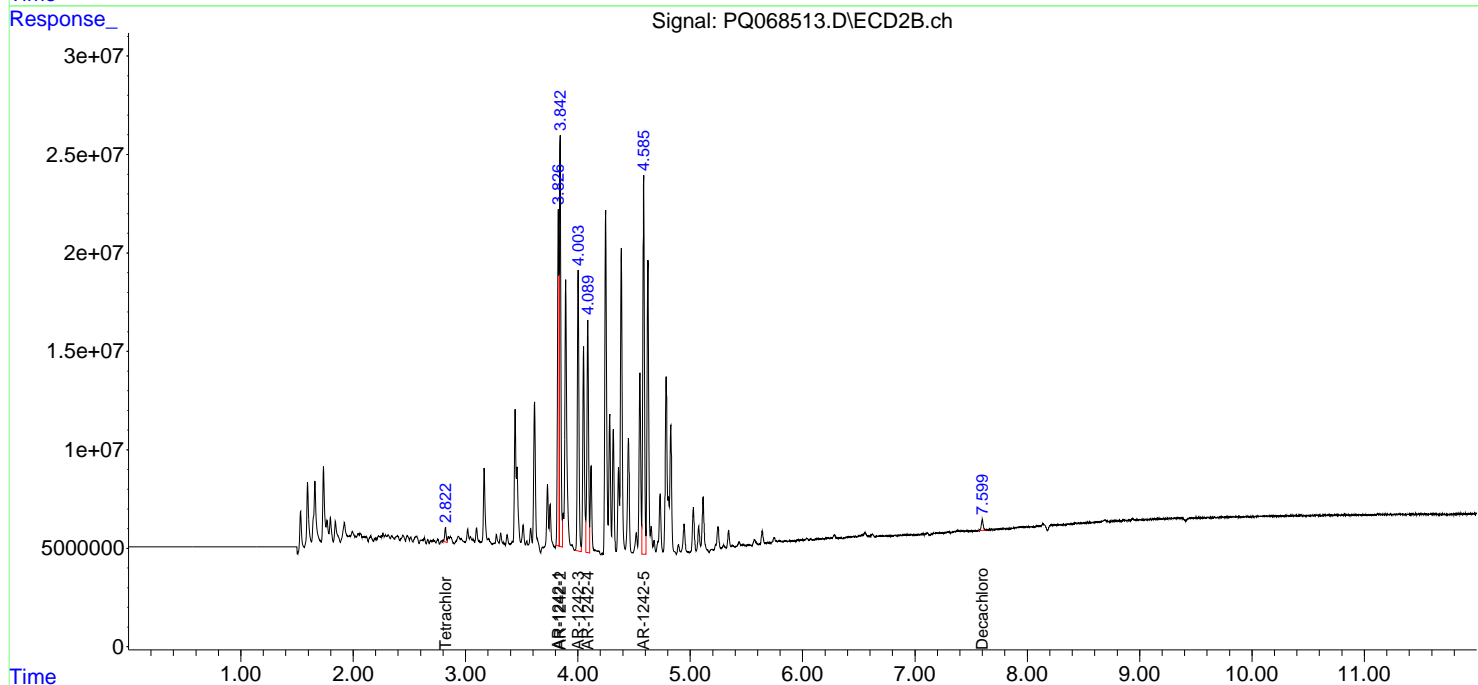
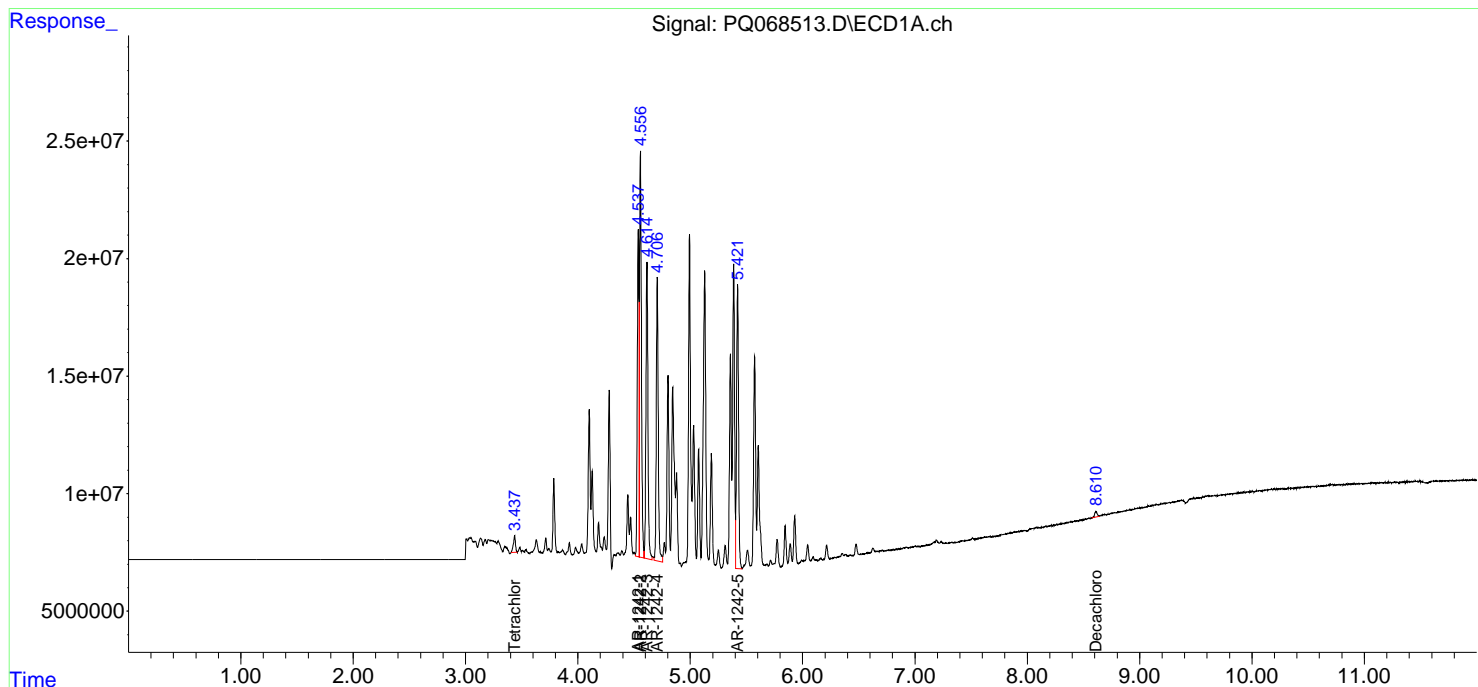
(f)=RT Delta > 1/2 Window (#)=Amounts differ by > 25% (m)=manual int.

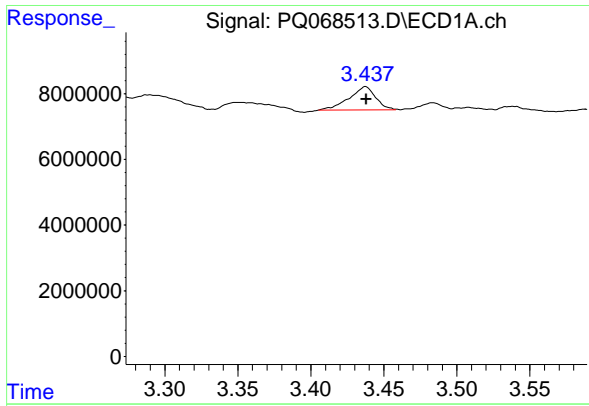
Data Path : Z:\pestpcbsrv\HPCHEM1\ECD_Q\Data\PQ091024\
 Data File : PQ068513.D
 Signal(s) : Signal #1: ECD1A.ch Signal #2: ECD2B.ch
 Acq On : 10 Sep 2024 14:10
 Operator : YP\AJ
 Sample : P3887-01DL 20X
 Misc :
 ALS Vial : 8 Sample Multiplier: 1

Instrument :
 ECD_Q
 ClientSampleId :
 60201DL

Integration File signal 1: autoint1.e
 Integration File signal 2: autoint2.e
 Quant Time: Sep 11 01:20:36 2024
 Quant Method : Z:\pestpcbsrv\HPCHEM1\ECD_Q\Method\PQ090624.M
 Quant Title : GC EXTRACTABLES
 QLast Update : Tue Sep 10 13:06:53 2024
 Response via : Initial Calibration
 Integrator: ChemStation

Volume Inj. : 2 µl
 Signal #1 Phase : ZB-MR1 Signal #2 Phase: ZB-MR2
 Signal #1 Info : 30Mx0.32mmx 0.50µ Signal #2 Info : 30M x 0.32mm x 0.25µm

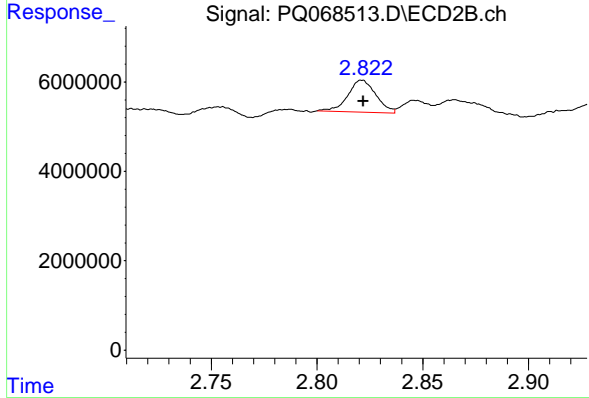




#1 Tetrachloro-m-xylene

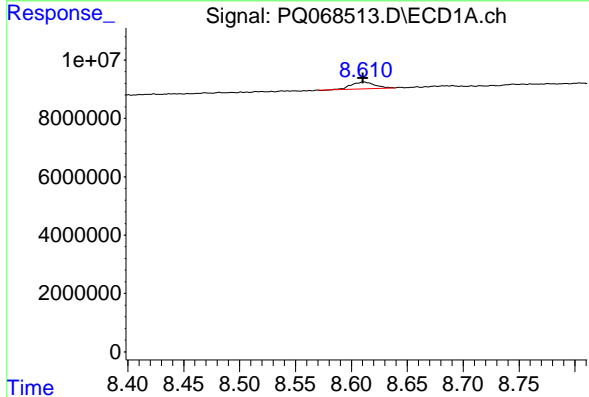
R.T.: 3.437 min
 Delta R.T.: 0.000 min
 Response: 9080287
 Conc: 1.27 ng/ml

Instrument :
 ECD_Q
 ClientSampleId :
 60201DL



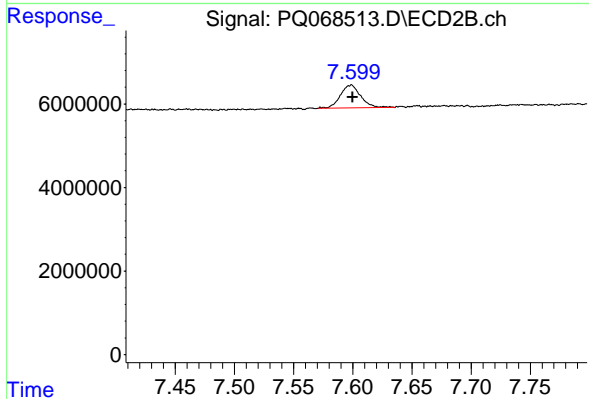
#1 Tetrachloro-m-xylene

R.T.: 2.822 min
 Delta R.T.: 0.000 min
 Response: 6615016
 Conc: 0.93 ng/ml



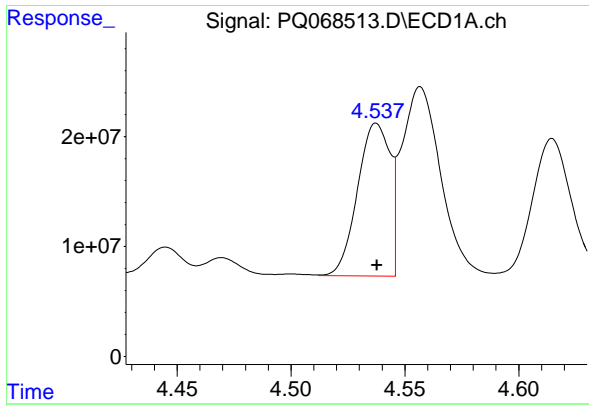
#2 Decachlorobiphenyl

R.T.: 8.611 min
 Delta R.T.: 0.000 min
 Response: 3394870
 Conc: 0.78 ng/ml



#2 Decachlorobiphenyl

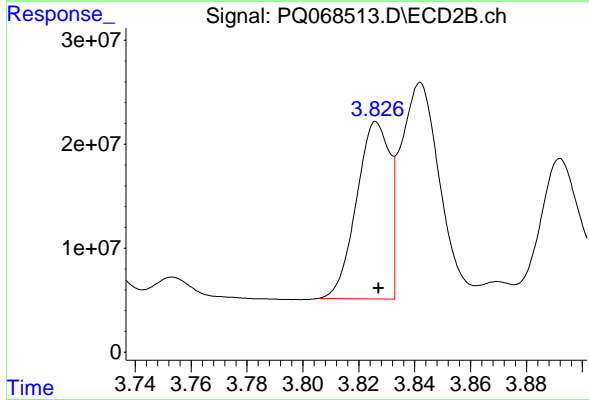
R.T.: 7.599 min
 Delta R.T.: -0.001 min
 Response: 6564577
 Conc: 0.99 ng/ml



#16 AR-1242-1

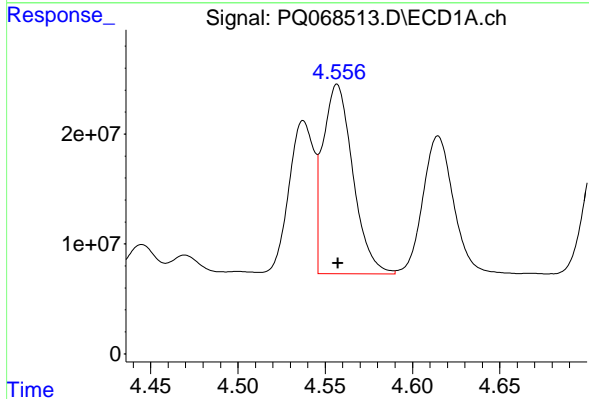
R.T.: 4.537 min
 Delta R.T.: 0.000 min
 Response: 138468480
 Conc: 766.39 ng/ml

Instrument :
 ECD_Q
 ClientSampleId :
 60201DL



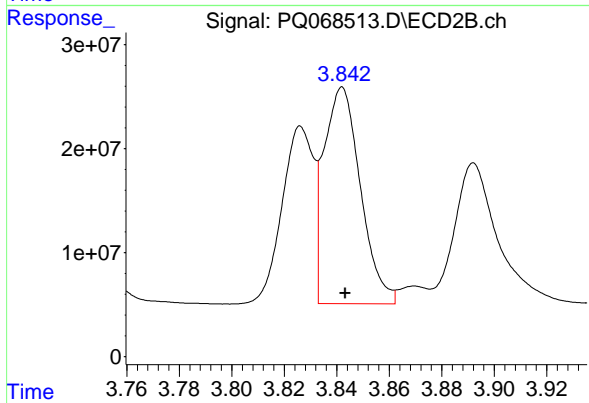
#16 AR-1242-1

R.T.: 3.826 min
 Delta R.T.: 0.000 min
 Response: 140759452
 Conc: 770.60 ng/ml



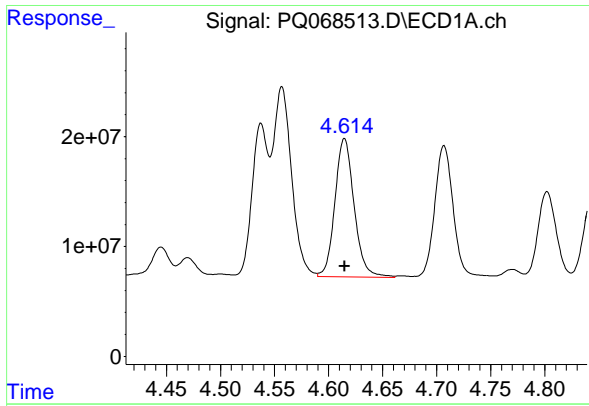
#17 AR-1242-2

R.T.: 4.557 min
 Delta R.T.: 0.000 min
 Response: 206114805
 Conc: 740.43 ng/ml



#17 AR-1242-2

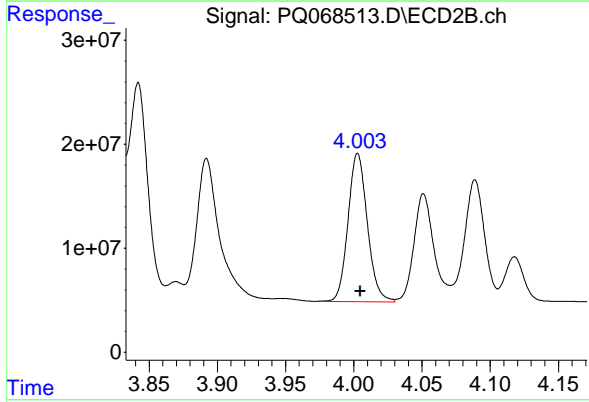
R.T.: 3.842 min
 Delta R.T.: -0.001 min
 Response: 202027029
 Conc: 747.04 ng/ml



#18 AR-1242-3

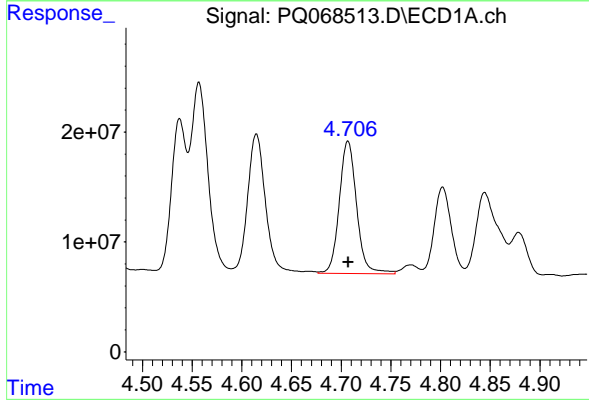
R.T.: 4.615 min
 Delta R.T.: 0.000 min
 Response: 155987437
 Conc: 907.36 ng/ml

Instrument :
 ECD_Q
 ClientSampleId :
 60201DL



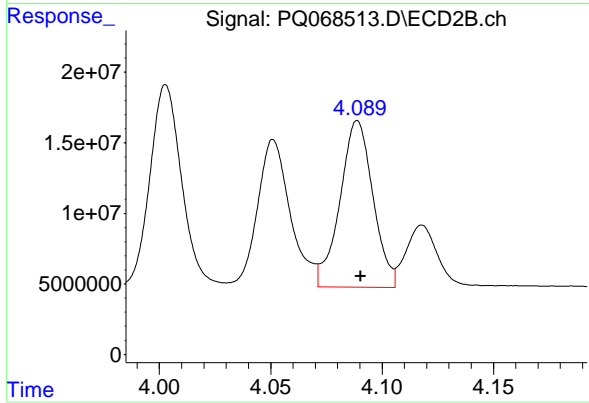
#18 AR-1242-3

R.T.: 4.003 min
 Delta R.T.: -0.002 min
 Response: 140533980
 Conc: 954.93 ng/ml



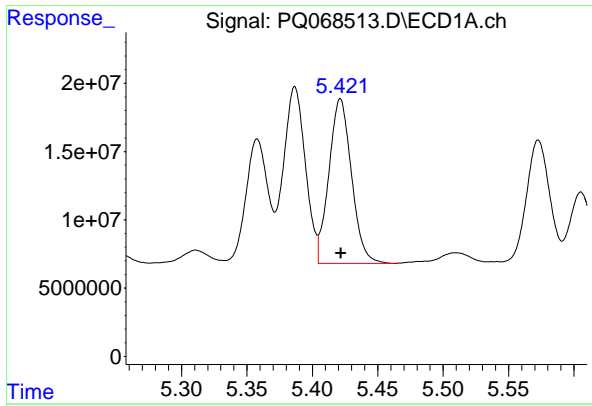
#19 AR-1242-4

R.T.: 4.707 min
 Delta R.T.: 0.000 min
 Response: 146385057
 Conc: 1031.61 ng/ml



#19 AR-1242-4

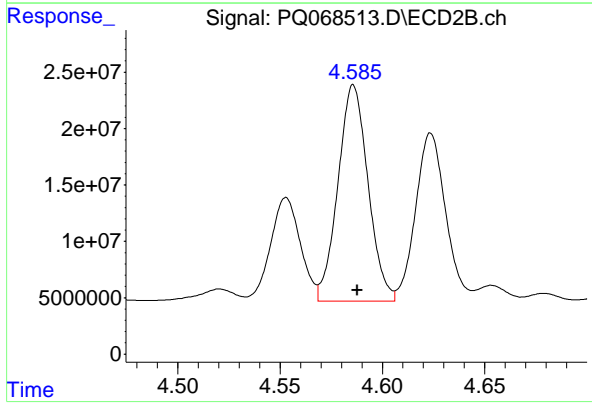
R.T.: 4.089 min
 Delta R.T.: -0.001 min
 Response: 121764877
 Conc: 872.85 ng/ml



#20 AR-1242-5

R.T.: 5.421 min
 Delta R.T.: 0.000 min
 Response: 145180295
 Conc: 1007.35 ng/ml

Instrument :
 ECD_Q
 ClientSampleId :
 60201DL



#20 AR-1242-5

R.T.: 4.586 min
 Delta R.T.: -0.002 min
 Response: 196582224
 Conc: 1046.21 ng/ml