

Data Path : Z:\pestpcbsrv\HPCHEM1\ECD_Q\Data\PQ091119\
 Data File : PQ043476.D
 Signal(s) : Signal #1: ECD1A.ch Signal #2: ECD2B.ch
 Acq On : 11 Sep 2019 17:14
 Operator : SM\AJ
 Sample : K3591-01
 Misc : AR1268 LOD 25 PPB
 ALS Vial : 12 Sample Multiplier: 1

Instrument :
 ECD_Q
 ClientSampled :

Integration File signal 1: autoint1.e
 Integration File signal 2: autoint2.e
 Quant Time: Sep 12 02:42:54 2019
 Quant Method : Z:\pestpcbsrv\HPCHEM1\ECD_Q\Method\PQ091119.M
 Quant Title : GC EXTRACTABLES
 QLast Update : Thu Sep 12 02:33:14 2019
 Response via : Initial Calibration
 Integrator: ChemStation

Volume Inj. : 2 µl
 Signal #1 Phase : ZB-MR1 Signal #2 Phase: ZB-MR2
 Signal #1 Info : 30Mx0.32mmx 0.50µ Signal #2 Info : 30M x 0.32mm x 0.25µm

Compound	RT#1	RT#2	Resp#1	Resp#2	ng/ml	ng/ml
System Monitoring Compounds						
1) SA Tetrachlo...	5.696	4.784	21678290	8189333	13.606	13.520
2) SA Decachlor...	12.088	10.560	140.2E6	69723876	22.228	22.260
Target Compounds						
3) L1 AR-1016-1	0.000	6.183	0	44896	N.D.	1.522 #
4) L1 AR-1016-2	0.000	6.328	0	70410	N.D.	1.797 #
5) L1 AR-1016-3	0.000	6.476	0	122411	N.D.	5.819 #
6) L1 AR-1016-4	0.000	6.556	0	168232	N.D.	9.656 #
7) L1 AR-1016-5	0.000	6.747	0	153116	N.D.	6.841 #
8) L2 AR-1221-1	0.000	5.081	0	91702	N.D.	15.733 #
9) L2 AR-1221-2	0.000	5.205	0	116999	N.D.	24.333 #
10) L2 AR-1221-3	0.000	5.297	0	33814	N.D.	2.060 #
11) L3 AR-1232-1	0.000	5.297	0	33814	N.D.	1.830 #
12) L3 AR-1232-2	0.000	6.328	0	70410	N.D.	3.529 #
13) L3 AR-1232-3	0.000	6.476	0	122411	N.D.	11.277 #
14) L3 AR-1232-4	0.000	6.600	0	131048	N.D.	12.837 #
15) L3 AR-1232-5	0.000	6.747	0	153116	N.D.	13.987 #
16) L4 AR-1242-1	0.000	6.183	0	44896	N.D.	2.599 #
17) L4 AR-1242-2	0.000	6.328	0	70410	N.D.	3.032 #
18) L4 AR-1242-3	0.000	6.476	0	122411	N.D.	9.904 #
19) L4 AR-1242-4	0.000	6.600	0	131048	N.D.	10.314 #
20) L4 AR-1242-5	0.000	7.163	0	658987	N.D.	32.914 #
21) L5 AR-1248-1	0.000	6.183	0	44896	N.D.	3.565 #
22) L5 AR-1248-2	0.000	6.556	0	168232	N.D.	9.499 #
23) L5 AR-1248-3	0.000	6.600	0	131048	N.D.	7.000 #
24) L5 AR-1248-4	0.000	6.747	0	153116	N.D.	6.636 #
25) L5 AR-1248-5	0.000	7.241	0	265933	N.D.	9.383 #
26) L6 AR-1254-1	0.000	7.163	0	658987	N.D.	14.568 #
27) L6 AR-1254-2	0.000	7.346	0	587607	N.D.	13.333 #
28) L6 AR-1254-3	0.000	7.796	0	420345	N.D.	5.635 #
29) L6 AR-1254-4	0.000	8.085	0	1107221	N.D.	20.007 #
30) L6 AR-1254-5	0.000	8.486	0	248730	N.D.	3.052 #
31) L7 AR-1260-1	0.000	7.918	0	1669014	N.D.	28.751 #
32) L7 AR-1260-2	0.000	8.140	0	1493860	N.D.	19.540 #
33) L7 AR-1260-3	9.549	8.325	2503650	401226	18.239	5.723 #
34) L7 AR-1260-4	9.813	8.815	3013911	1367095	17.729	20.737
35) L7 AR-1260-5	10.139	9.069	2218857	1009815	5.643	5.378
36) L8 AR-1262-1	9.549	8.544	2503650	1268676	11.376	12.831
37) L8 AR-1262-2	10.139	9.069	2218857	1009815	4.340	4.518
38) L8 AR-1262-3	10.470	9.363	14705851	7629510	38.316	66.312 #
39) L8 AR-1262-4	10.573	9.430	15556685	7501216	91.124	33.295 #
40) L8 AR-1262-5	11.277	9.955	7227506	4099291	24.833	26.533
41) L9 AR-1268-1	10.470	9.363	14705851	7629510	22.960	23.336

Data Path : Z:\pestpcbsrv\HPCHEM1\ECD_Q\Data\PQ091119\
 Data File : PQ043476.D
 Signal(s) : Signal #1: ECD1A.ch Signal #2: ECD2B.ch
 Acq On : 11 Sep 2019 17:14
 Operator : SM\AJ
 Sample : K3591-01
 Misc : AR1268 LOD 25 PPB
 ALS Vial : 12 Sample Multiplier: 1

Instrument :
 ECD_Q
 ClientSampleId :

Integration File signal 1: autoint1.e
 Integration File signal 2: autoint2.e
 Quant Time: Sep 12 02:42:54 2019
 Quant Method : Z:\pestpcbsrv\HPCHEM1\ECD_Q\Method\PQ091119.M
 Quant Title : GC EXTRACTABLES
 QLast Update : Thu Sep 12 02:33:14 2019
 Response via : Initial Calibration
 Integrator: ChemStation

Volume Inj. : 2 µl
 Signal #1 Phase : ZB-MR1 Signal #2 Phase: ZB-MR2
 Signal #1 Info : 30Mx0.32mmx 0.50µ Signal #2 Info : 30M x 0.32mm x 0.25µm

	Compound	RT#1	RT#2	Resp#1	Resp#2	ng/ml	ng/ml
42)	L9 AR-1268-2	10.573	9.430	15556685	7501216	25.033	23.452
43)	L9 AR-1268-3	10.817	9.647	15737176	6972039	29.689	24.602
44)	L9 AR-1268-4	11.277	9.955	7227506	4099291	24.915	25.222
45)	L9 AR-1268-5	11.721	10.276	56751021	30310917	23.802	24.137

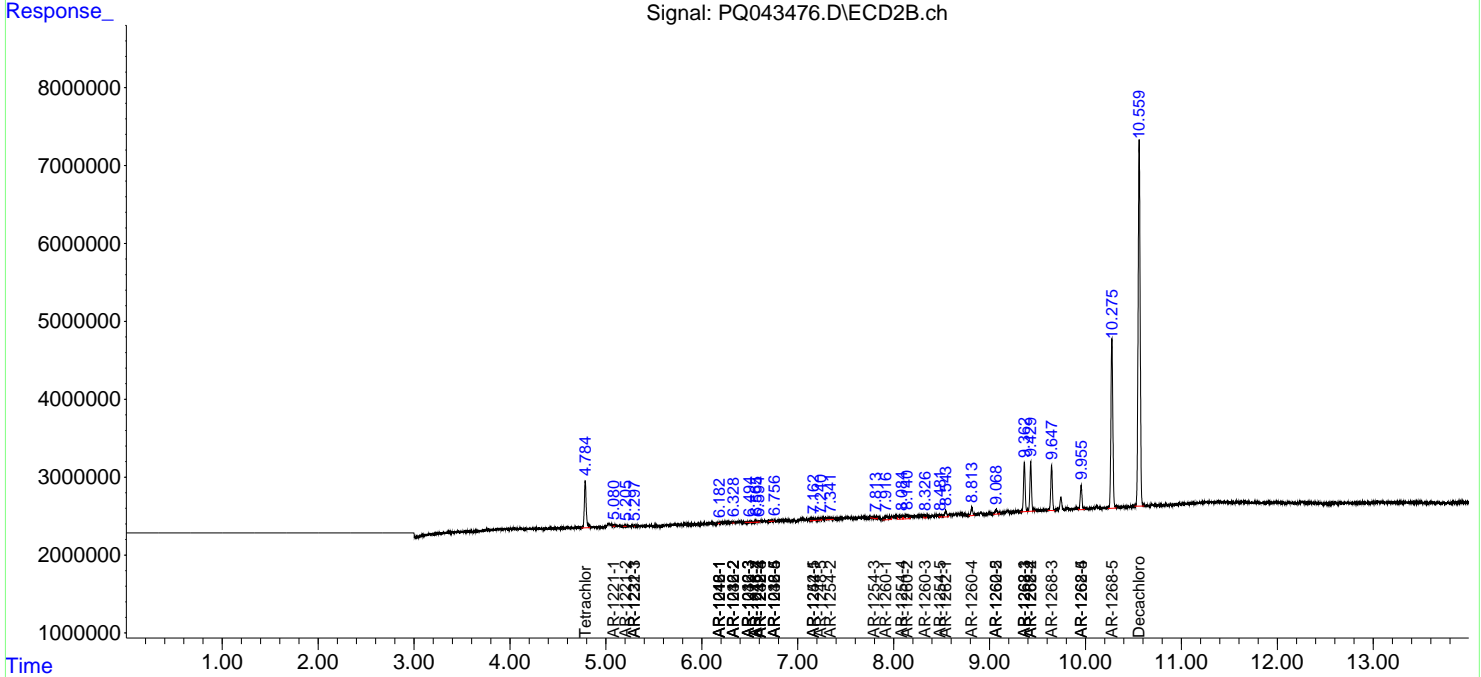
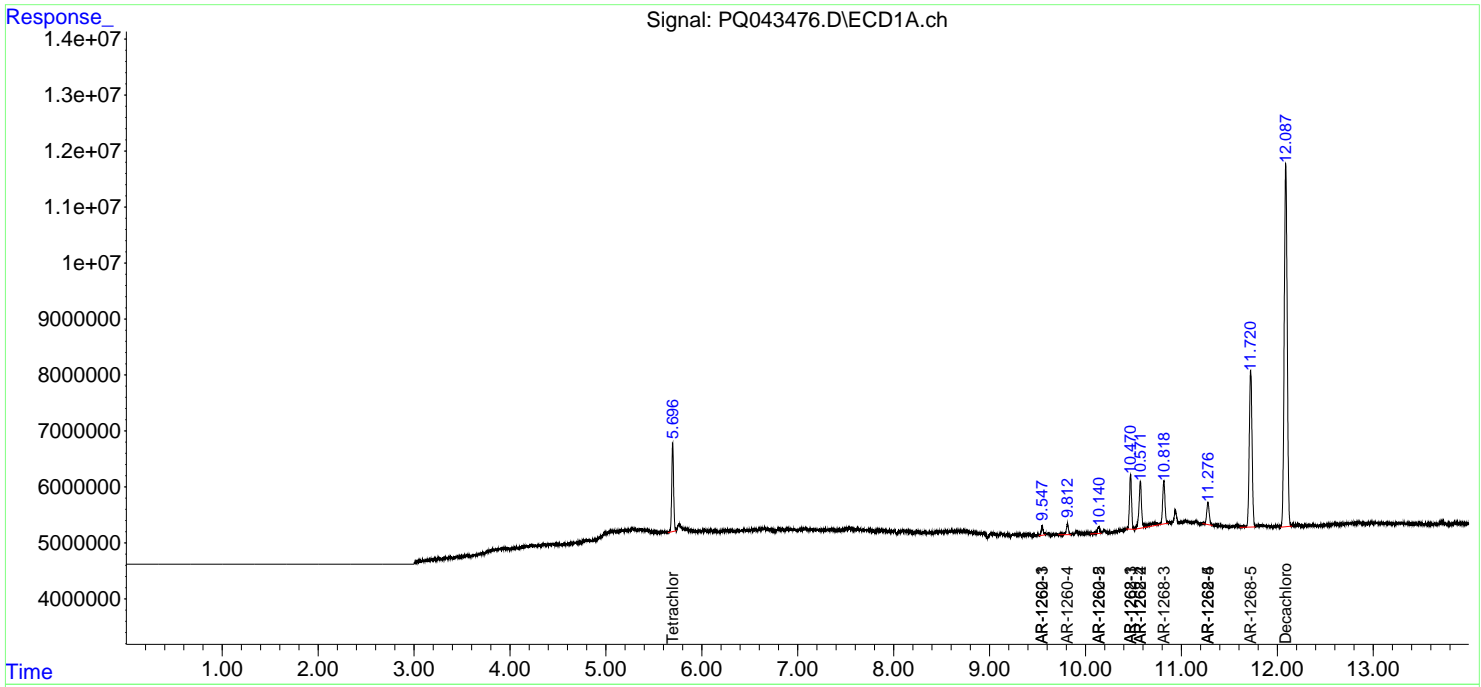
(f)=RT Delta > 1/2 Window (#)=Amounts differ by > 25% (m)=manual int.

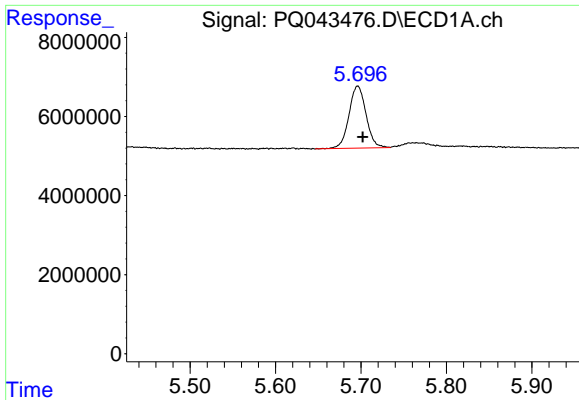
Data Path : Z:\pestpcbsrv\HPCHEM1\ECD_Q\Data\PQ091119\
 Data File : PQ043476.D
 Signal(s) : Signal #1: ECD1A.ch Signal #2: ECD2B.ch
 Acq On : 11 Sep 2019 17:14
 Operator : SM\AJ
 Sample : K3591-01
 Misc : AR1268 LOD 25 PPB
 ALS Vial : 12 Sample Multiplier: 1

Instrument :
 ECD_Q
 ClientSampled :

Integration File signal 1: autoint1.e
 Integration File signal 2: autoint2.e
 Quant Time: Sep 12 02:42:54 2019
 Quant Method : Z:\pestpcbsrv\HPCHEM1\ECD_Q\Method\PQ091119.M
 Quant Title : GC EXTRACTABLES
 QLast Update : Thu Sep 12 02:33:14 2019
 Response via : Initial Calibration
 Integrator: ChemStation

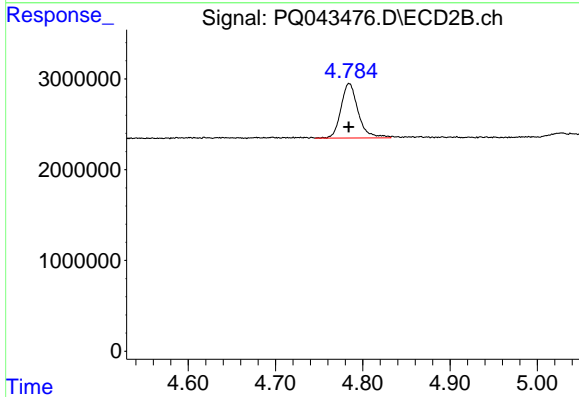
Volume Inj. : 2 µl
 Signal #1 Phase : ZB-MR1 Signal #2 Phase: ZB-MR2
 Signal #1 Info : 30Mx0.32mmx 0.50µ Signal #2 Info : 30M x 0.32mm x 0.25µm



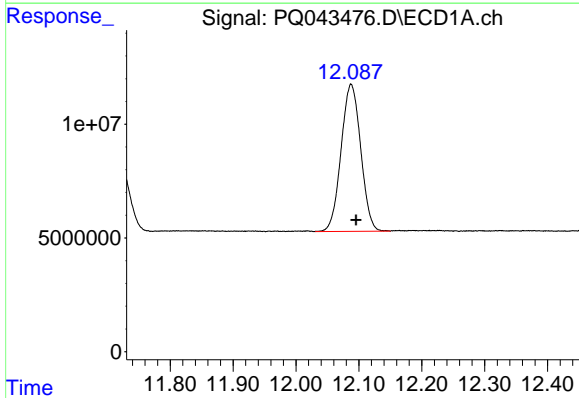


#1 Tetrachloro-m-xylene
 R.T.: 5.696 min
 Delta R.T.: -0.006 min
 Response: 21678290
 Conc: 13.61 ng/ml

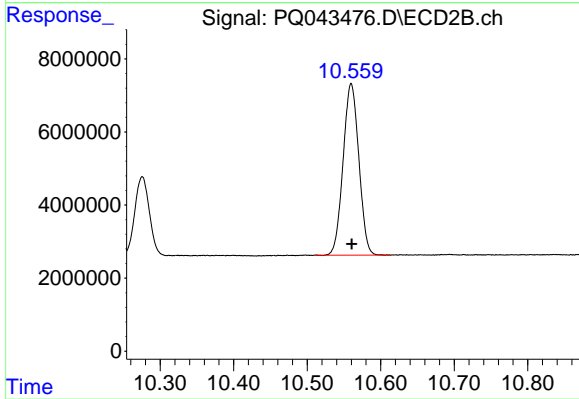
Instrument :
 ECD_Q
 ClientSampleId :



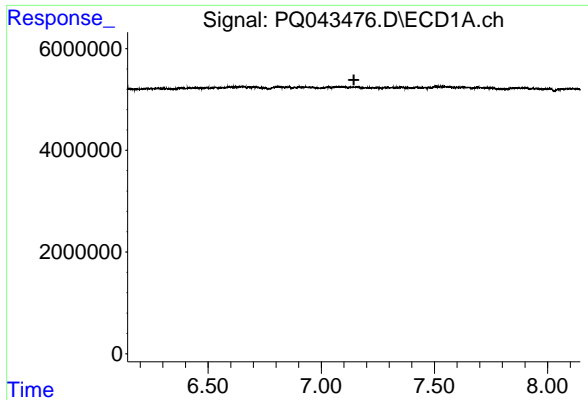
#1 Tetrachloro-m-xylene
 R.T.: 4.784 min
 Delta R.T.: 0.000 min
 Response: 8189333
 Conc: 13.52 ng/ml



#2 Decachlorobiphenyl
 R.T.: 12.088 min
 Delta R.T.: -0.008 min
 Response: 140190690
 Conc: 22.23 ng/ml



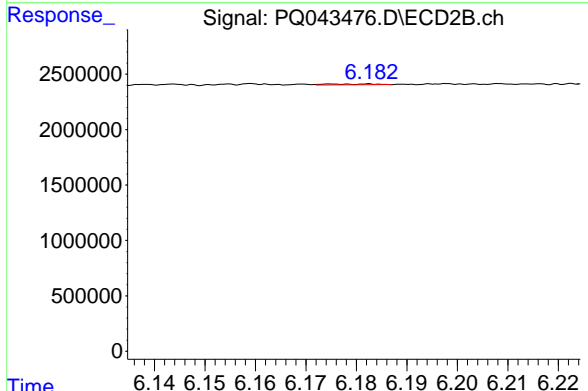
#2 Decachlorobiphenyl
 R.T.: 10.560 min
 Delta R.T.: 0.000 min
 Response: 69723876
 Conc: 22.26 ng/ml



#3 AR-1016-1

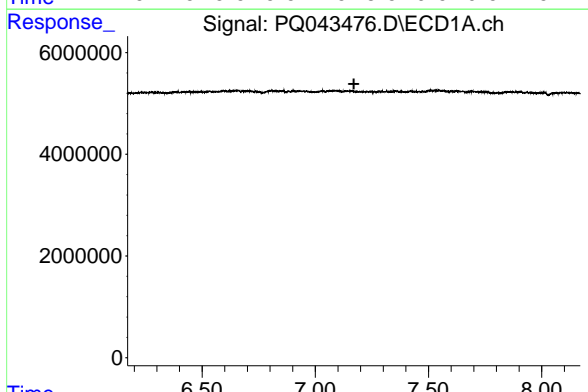
R.T.: 0.000 min
 Exp R.T. : 7.144 min
 Response: 0
 Conc: N.D.

Instrument :
 ECD_Q
 ClientSampleId :



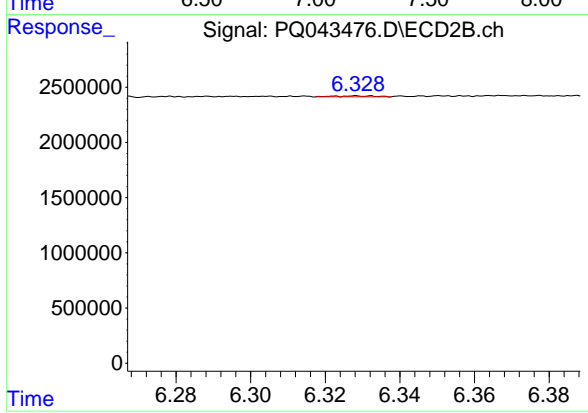
#3 AR-1016-1

R.T.: 6.183 min
 Delta R.T.: -0.057 min
 Response: 44896
 Conc: 1.52 ng/ml



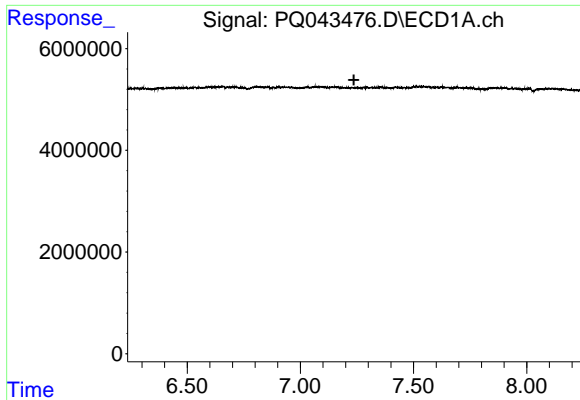
#4 AR-1016-2

R.T.: 0.000 min
 Exp R.T. : 7.170 min
 Response: 0
 Conc: N.D.



#4 AR-1016-2

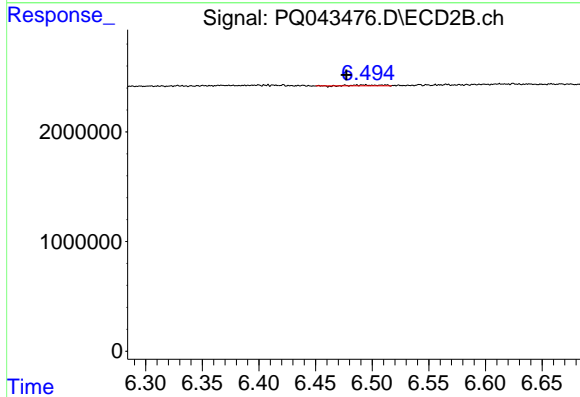
R.T.: 6.328 min
 Delta R.T.: 0.067 min
 Response: 70410
 Conc: 1.80 ng/ml



#5 AR-1016-3

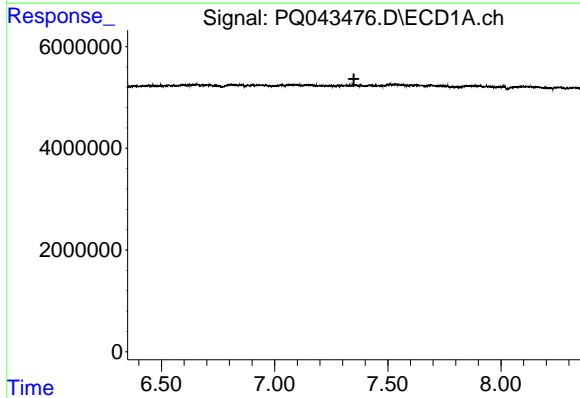
R.T.: 0.000 min
 Exp R.T. : 7.236 min
 Response: 0
 Conc: N.D.

Instrument :
 ECD_Q
 ClientSampleId :



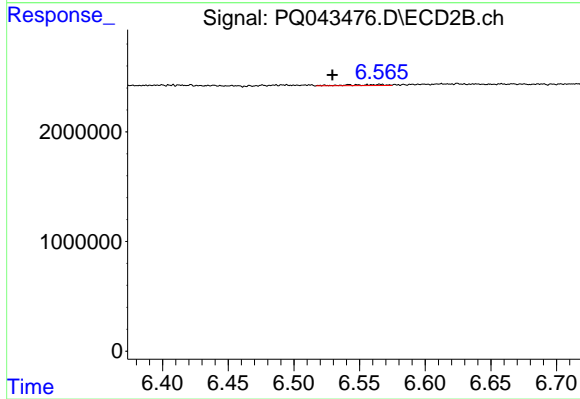
#5 AR-1016-3

R.T.: 6.476 min
 Delta R.T.: 0.000 min
 Response: 122411
 Conc: 5.82 ng/ml



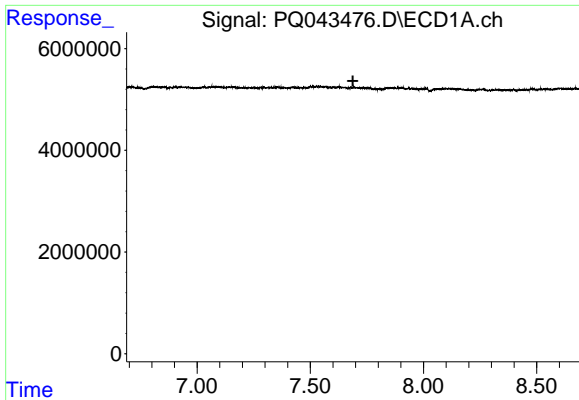
#6 AR-1016-4

R.T.: 0.000 min
 Exp R.T. : 7.350 min
 Response: 0
 Conc: N.D.



#6 AR-1016-4

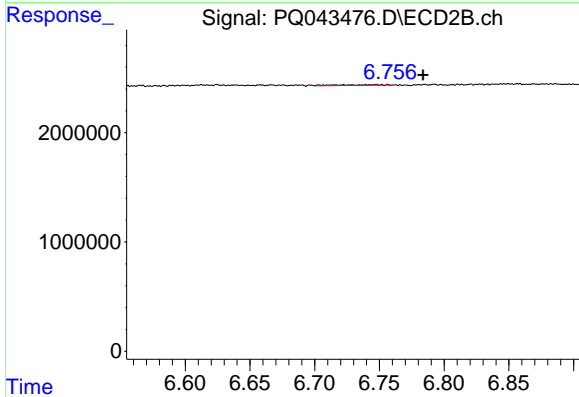
R.T.: 6.556 min
 Delta R.T.: 0.027 min
 Response: 168232
 Conc: 9.66 ng/ml



#7 AR-1016-5

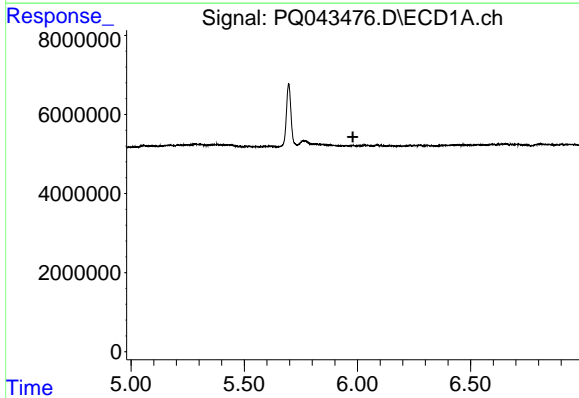
R.T.: 0.000 min
 Exp R.T.: 7.688 min
 Response: 0
 Conc: N.D.

Instrument :
 ECD_Q
 ClientSampleId :



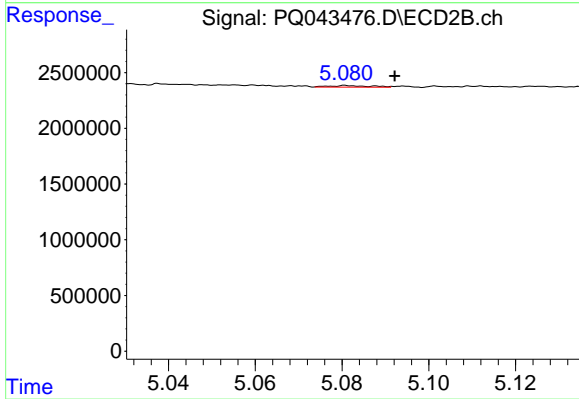
#7 AR-1016-5

R.T.: 6.747 min
 Delta R.T.: -0.036 min
 Response: 153116
 Conc: 6.84 ng/ml



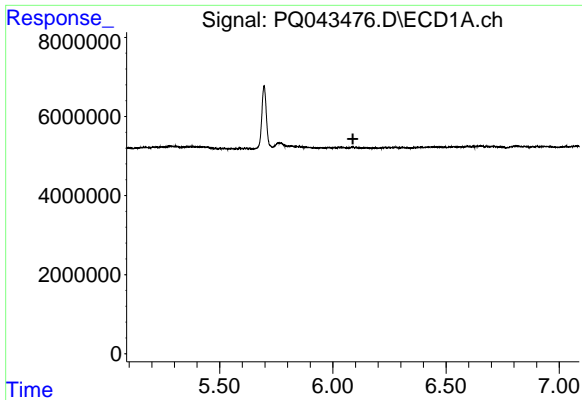
#8 AR-1221-1

R.T.: 0.000 min
 Exp R.T.: 5.980 min
 Response: 0
 Conc: N.D.



#8 AR-1221-1

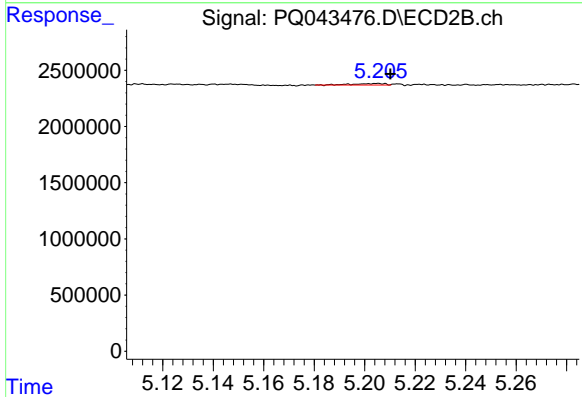
R.T.: 5.081 min
 Delta R.T.: -0.011 min
 Response: 91702
 Conc: 15.73 ng/ml



#9 AR-1221-2

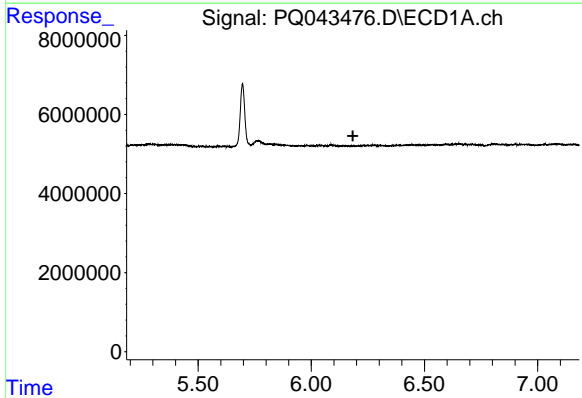
R.T.: 0.000 min
 Exp R.T. : 6.088 min
 Response: 0
 Conc: N.D.

Instrument :
 ECD_Q
 ClientSampleId :



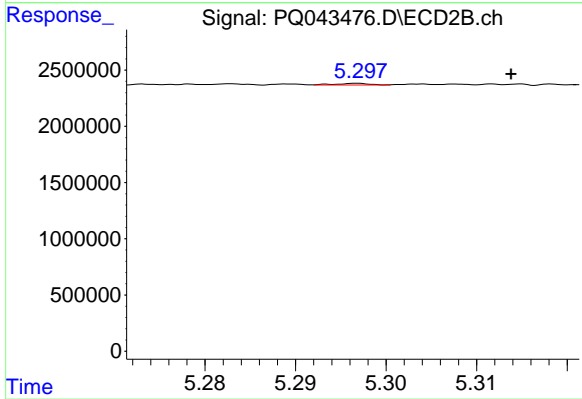
#9 AR-1221-2

R.T.: 5.205 min
 Delta R.T.: -0.005 min
 Response: 116999
 Conc: 24.33 ng/ml



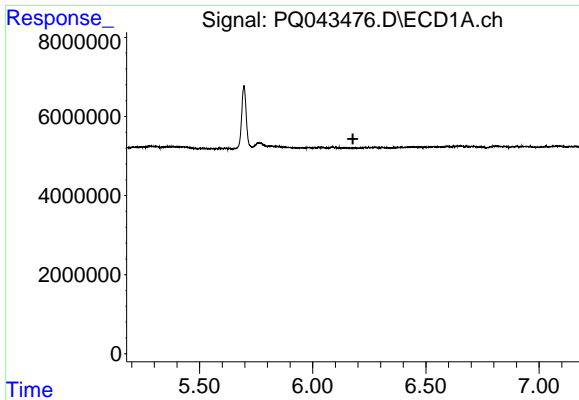
#10 AR-1221-3

R.T.: 0.000 min
 Exp R.T. : 6.184 min
 Response: 0
 Conc: N.D.



#10 AR-1221-3

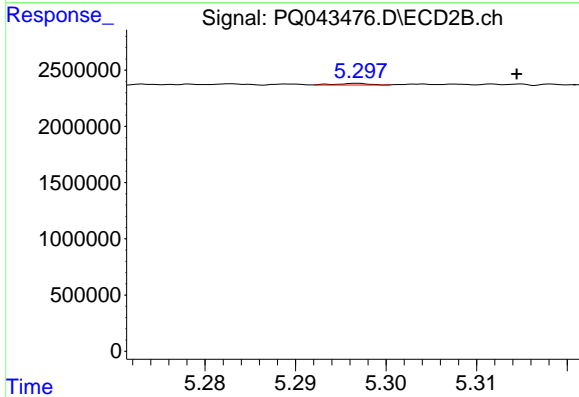
R.T.: 5.297 min
 Delta R.T.: -0.017 min
 Response: 33814
 Conc: 2.06 ng/ml



#11 AR-1232-1

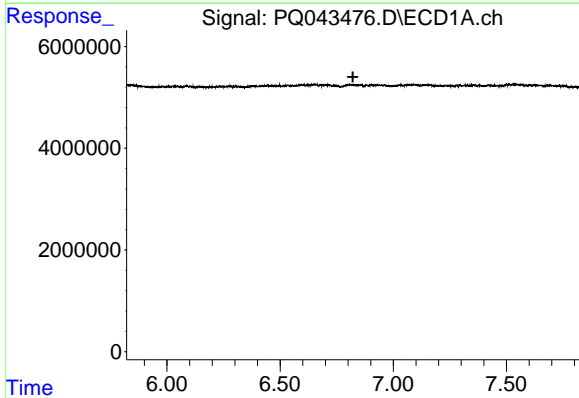
R.T.: 0.000 min
 Exp R.T. : 6.178 min
 Response: 0
 Conc: N.D.

Instrument :
 ECD_Q
 ClientSampleId :



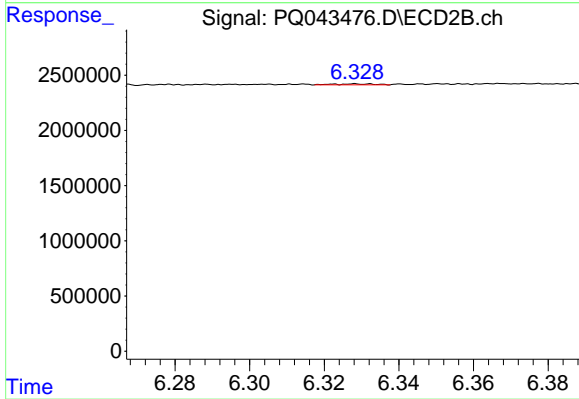
#11 AR-1232-1

R.T.: 5.297 min
 Delta R.T.: -0.017 min
 Response: 33814
 Conc: 1.83 ng/ml



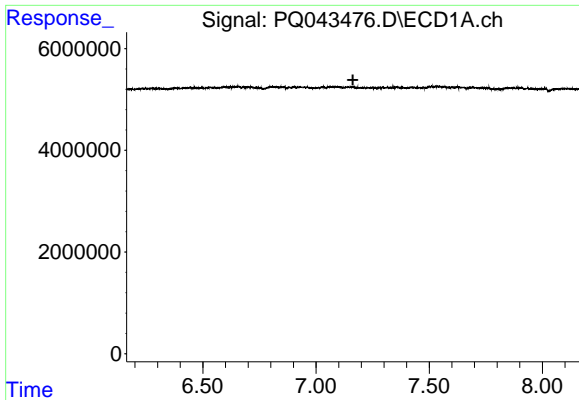
#12 AR-1232-2

R.T.: 0.000 min
 Exp R.T. : 6.822 min
 Response: 0
 Conc: N.D.



#12 AR-1232-2

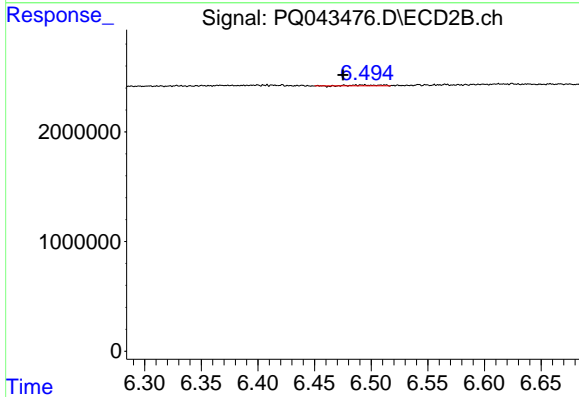
R.T.: 6.328 min
 Delta R.T.: 0.067 min
 Response: 70410
 Conc: 3.53 ng/ml



#13 AR-1232-3

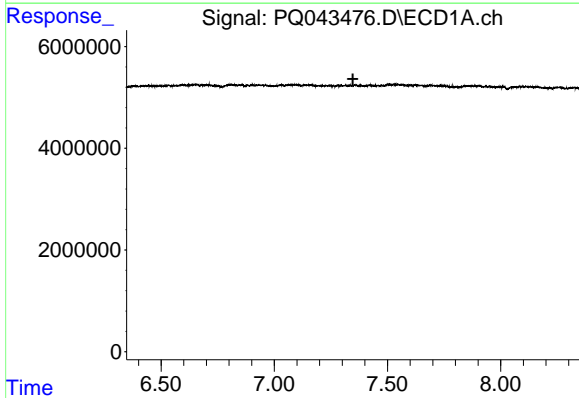
R.T.: 0.000 min
 Exp R.T. : 7.163 min
 Response: 0
 Conc: N.D.

Instrument :
 ECD_Q
 ClientSampleId :



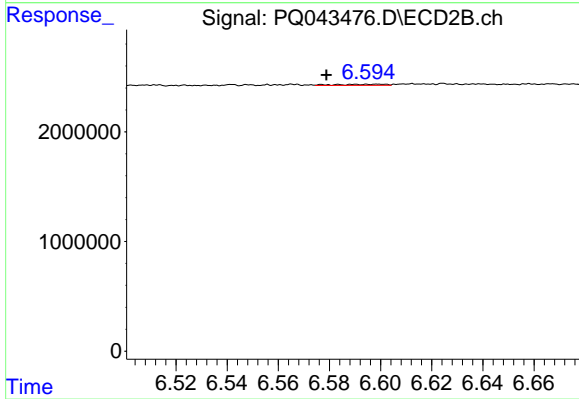
#13 AR-1232-3

R.T.: 6.476 min
 Delta R.T.: 0.001 min
 Response: 122411
 Conc: 11.28 ng/ml



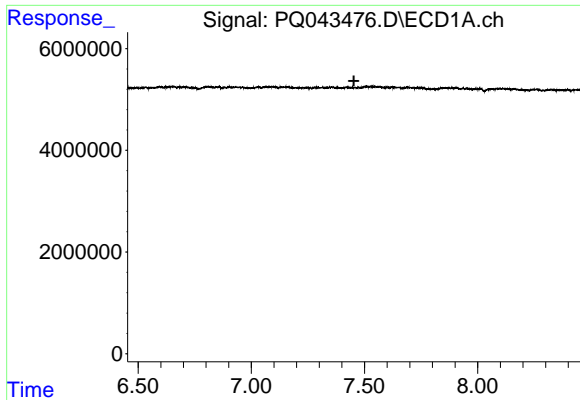
#14 AR-1232-4

R.T.: 0.000 min
 Exp R.T. : 7.347 min
 Response: 0
 Conc: N.D.



#14 AR-1232-4

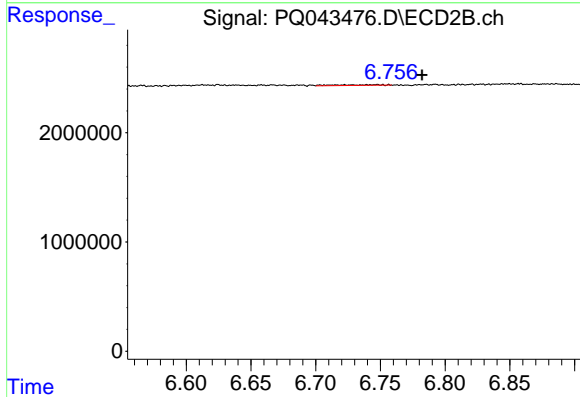
R.T.: 6.600 min
 Delta R.T.: 0.021 min
 Response: 131048
 Conc: 12.84 ng/ml



#15 AR-1232-5

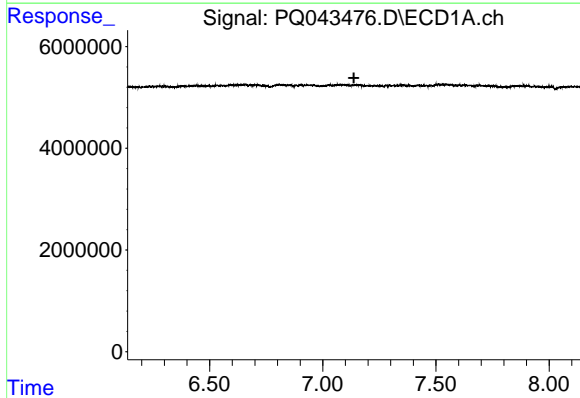
R.T.: 0.000 min
 Exp R.T. : 7.453 min
 Response: 0
 Conc: N.D.

Instrument :
 ECD_Q
 ClientSampled :



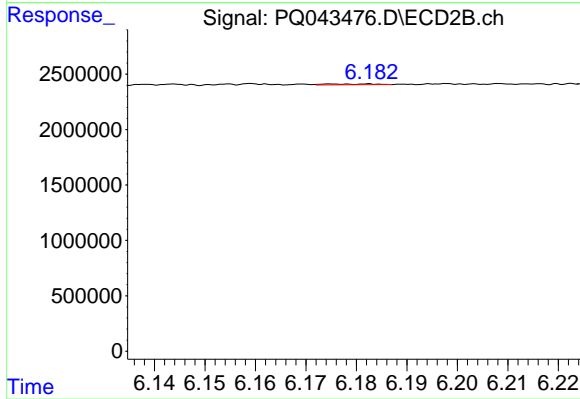
#15 AR-1232-5

R.T.: 6.747 min
 Delta R.T.: -0.035 min
 Response: 153116
 Conc: 13.99 ng/ml



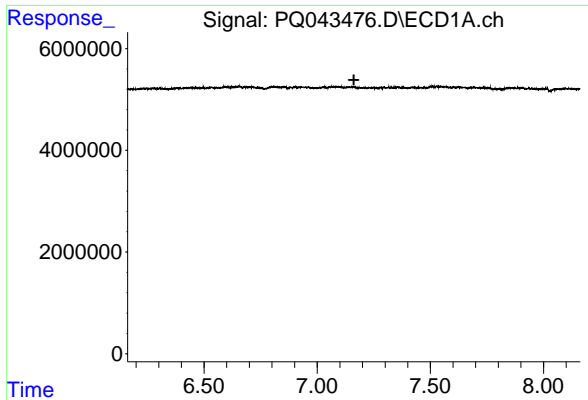
#16 AR-1242-1

R.T.: 0.000 min
 Exp R.T. : 7.137 min
 Response: 0
 Conc: N.D.



#16 AR-1242-1

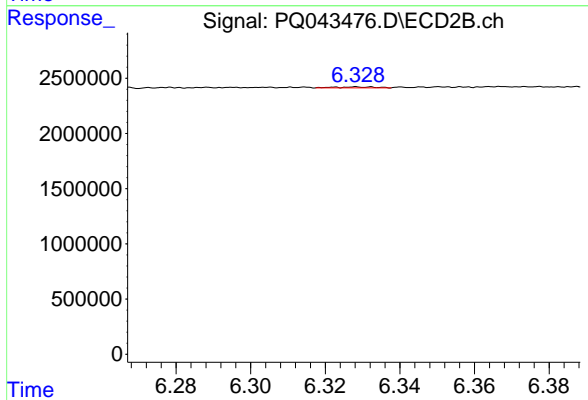
R.T.: 6.183 min
 Delta R.T.: -0.056 min
 Response: 44896
 Conc: 2.60 ng/ml



#17 AR-1242-2

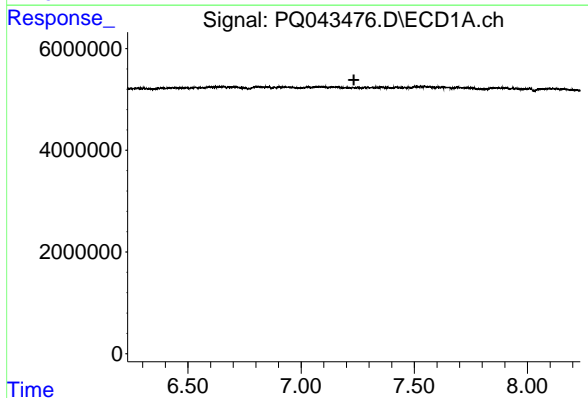
R.T.: 0.000 min
 Exp R.T. : 7.162 min
 Response: 0
 Conc: N.D.

Instrument :
 ECD_Q
 ClientSampleId :



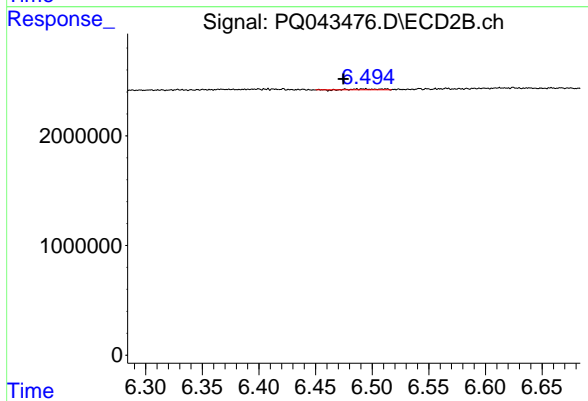
#17 AR-1242-2

R.T.: 6.328 min
 Delta R.T.: 0.067 min
 Response: 70410
 Conc: 3.03 ng/ml



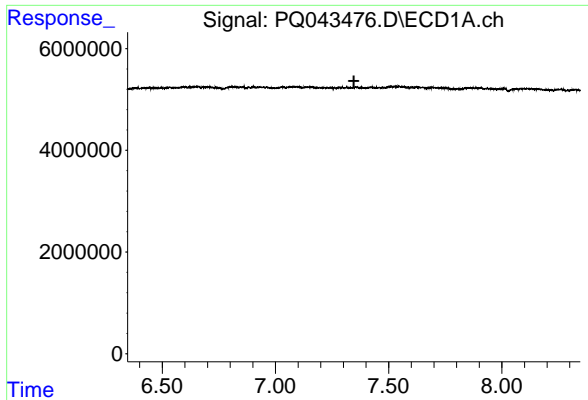
#18 AR-1242-3

R.T.: 0.000 min
 Exp R.T. : 7.233 min
 Response: 0
 Conc: N.D.



#18 AR-1242-3

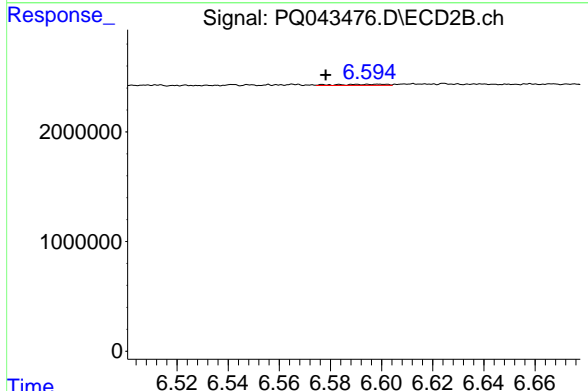
R.T.: 6.476 min
 Delta R.T.: 0.002 min
 Response: 122411
 Conc: 9.90 ng/ml



#19 AR-1242-4

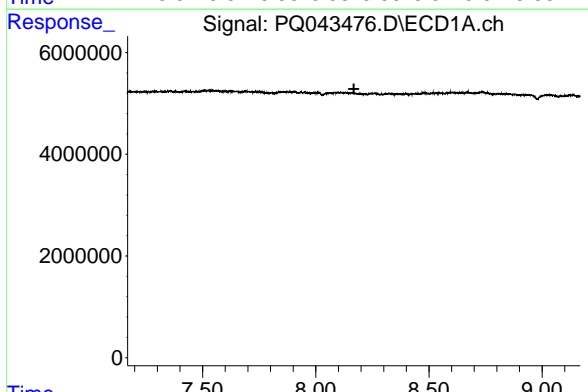
R.T.: 0.000 min
 Exp R.T. : 7.346 min
 Response: 0
 Conc: N.D.

Instrument :
 ECD_Q
 ClientSampleId :



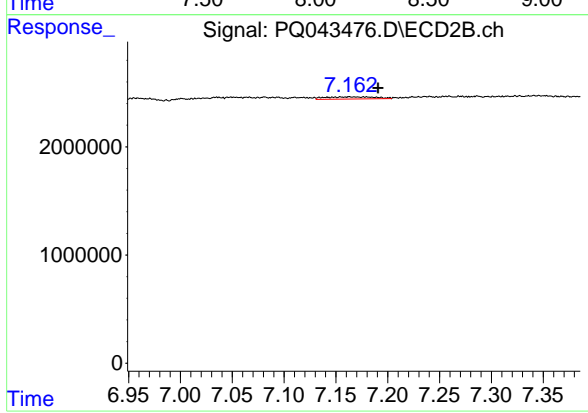
#19 AR-1242-4

R.T.: 6.600 min
 Delta R.T.: 0.021 min
 Response: 131048
 Conc: 10.31 ng/ml



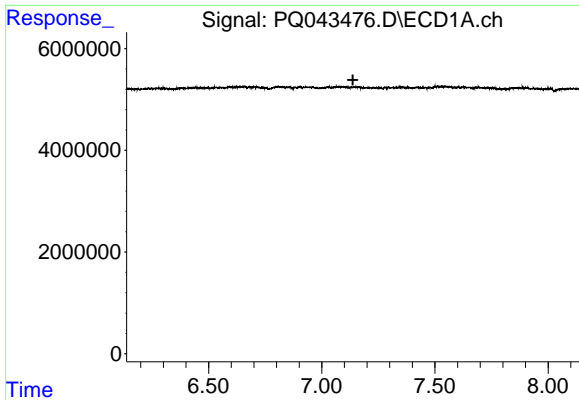
#20 AR-1242-5

R.T.: 0.000 min
 Exp R.T. : 8.168 min
 Response: 0
 Conc: N.D.



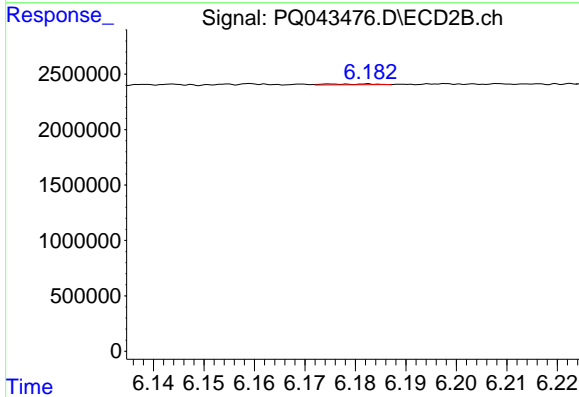
#20 AR-1242-5

R.T.: 7.163 min
 Delta R.T.: -0.028 min
 Response: 658987
 Conc: 32.91 ng/ml

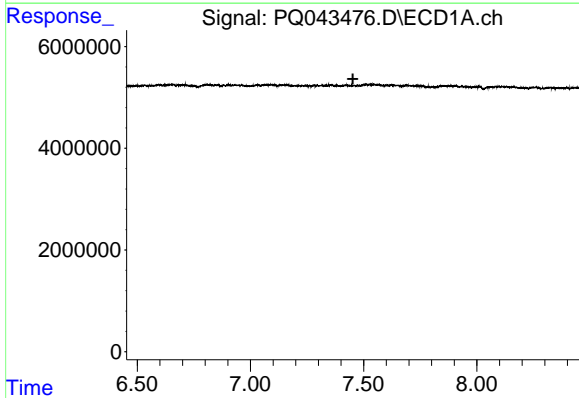


#21 AR-1248-1
 R.T.: 0.000 min
 Exp R.T. : 7.137 min
 Response: 0
 Conc: N.D.

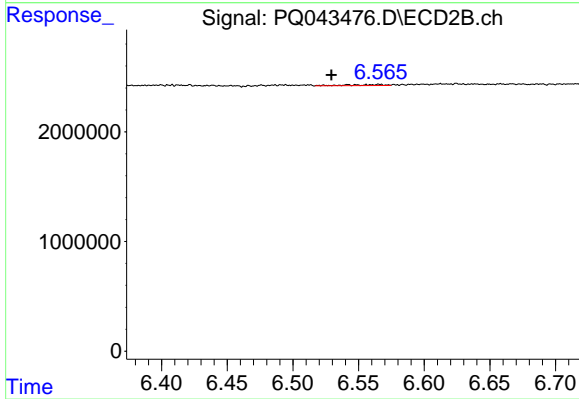
Instrument :
 ECD_Q
 ClientSampled :



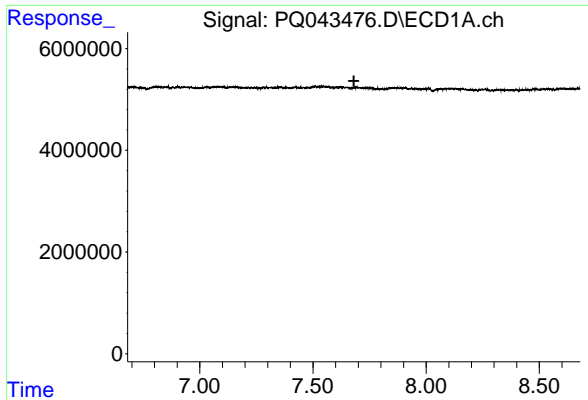
#21 AR-1248-1
 R.T.: 6.183 min
 Delta R.T.: -0.056 min
 Response: 44896
 Conc: 3.56 ng/ml



#22 AR-1248-2
 R.T.: 0.000 min
 Exp R.T. : 7.453 min
 Response: 0
 Conc: N.D.



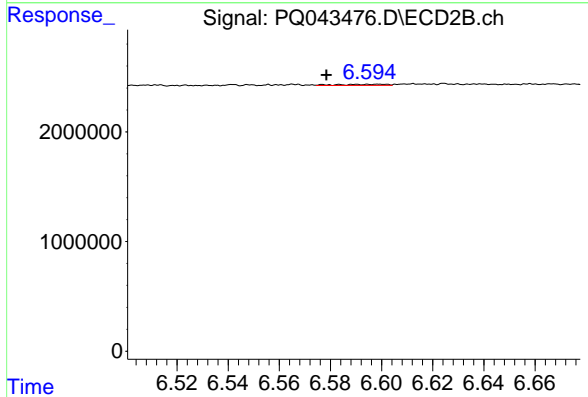
#22 AR-1248-2
 R.T.: 6.556 min
 Delta R.T.: 0.027 min
 Response: 168232
 Conc: 9.50 ng/ml



#23 AR-1248-3

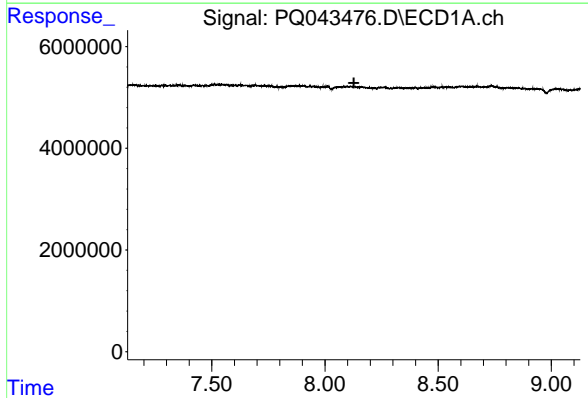
R.T.: 0.000 min
 Exp R.T. : 7.681 min
 Response: 0
 Conc: N.D.

Instrument :
 ECD_Q
 ClientSampleId :



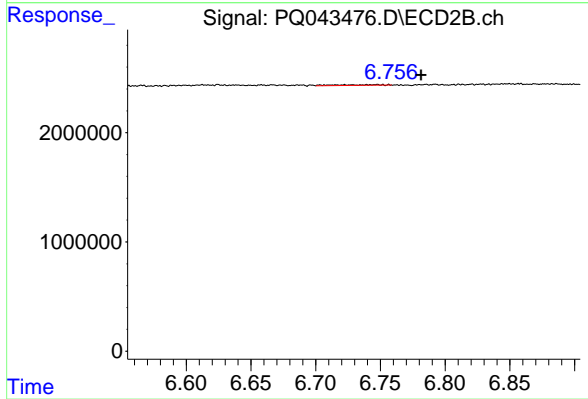
#23 AR-1248-3

R.T.: 6.600 min
 Delta R.T.: 0.021 min
 Response: 131048
 Conc: 7.00 ng/ml



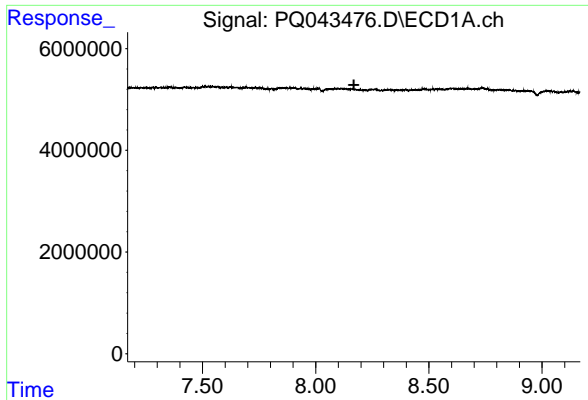
#24 AR-1248-4

R.T.: 0.000 min
 Exp R.T. : 8.128 min
 Response: 0
 Conc: N.D.



#24 AR-1248-4

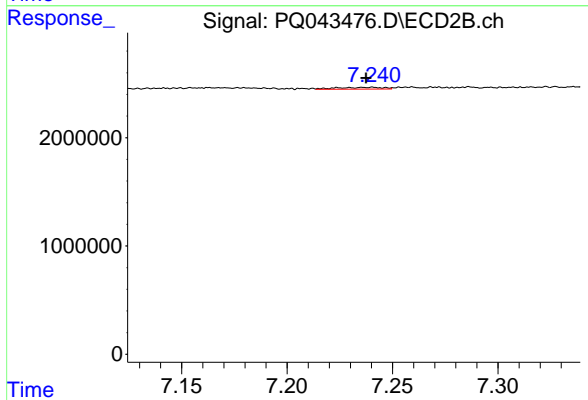
R.T.: 6.747 min
 Delta R.T.: -0.034 min
 Response: 153116
 Conc: 6.64 ng/ml



#25 AR-1248-5

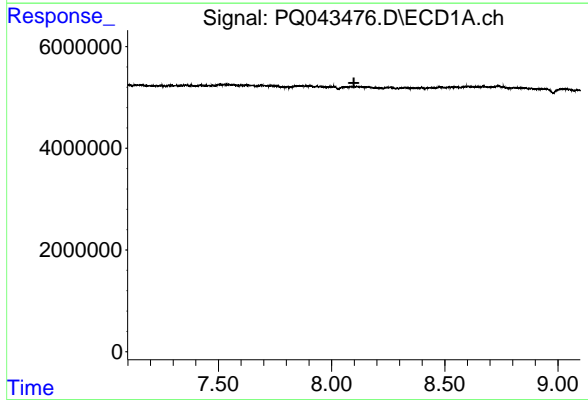
R.T.: 0.000 min
 Exp R.T. : 8.169 min
 Response: 0
 Conc: N.D.

Instrument :
 ECD_Q
 ClientSampleId :



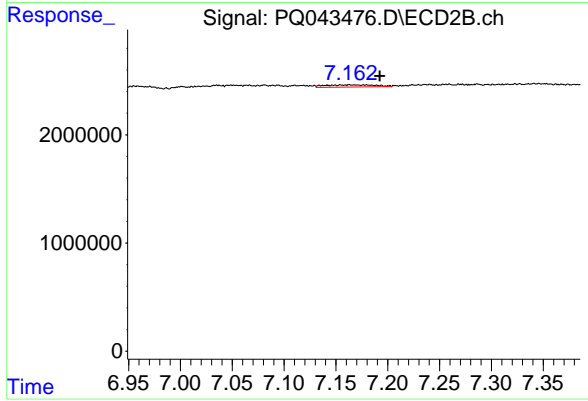
#25 AR-1248-5

R.T.: 7.241 min
 Delta R.T.: 0.003 min
 Response: 265933
 Conc: 9.38 ng/ml



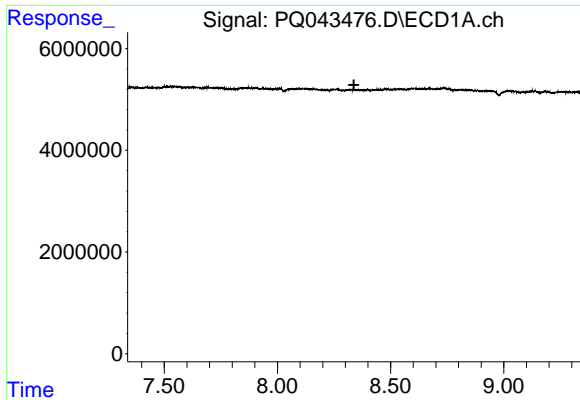
#26 AR-1254-1

R.T.: 0.000 min
 Exp R.T. : 8.098 min
 Response: 0
 Conc: N.D.



#26 AR-1254-1

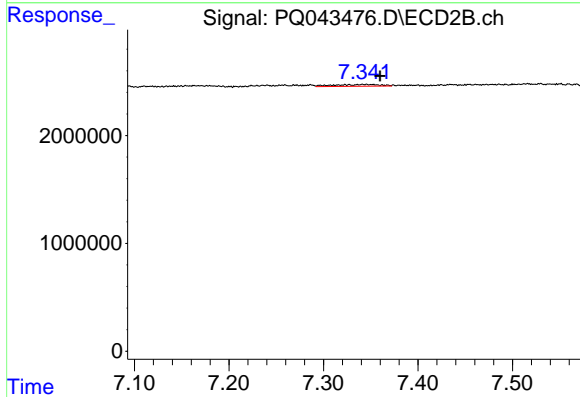
R.T.: 7.163 min
 Delta R.T.: -0.029 min
 Response: 658987
 Conc: 14.57 ng/ml



#27 AR-1254-2

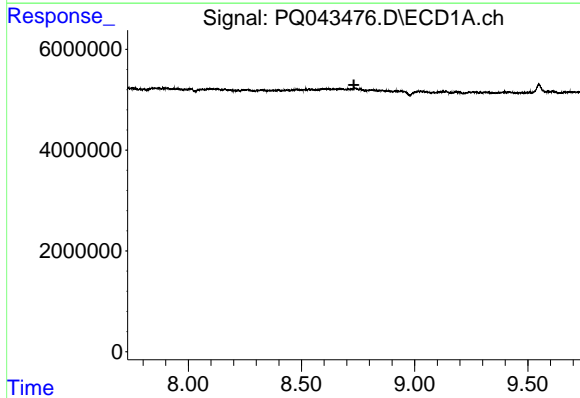
R.T.: 0.000 min
 Exp R.T. : 8.338 min
 Response: 0
 Conc: N.D.

Instrument :
 ECD_Q
 ClientSampleId :



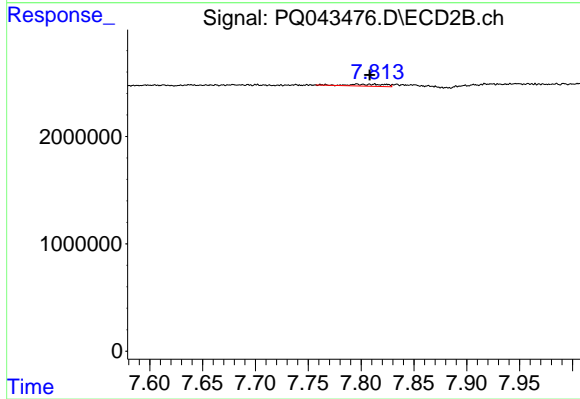
#27 AR-1254-2

R.T.: 7.346 min
 Delta R.T.: -0.014 min
 Response: 587607
 Conc: 13.33 ng/ml



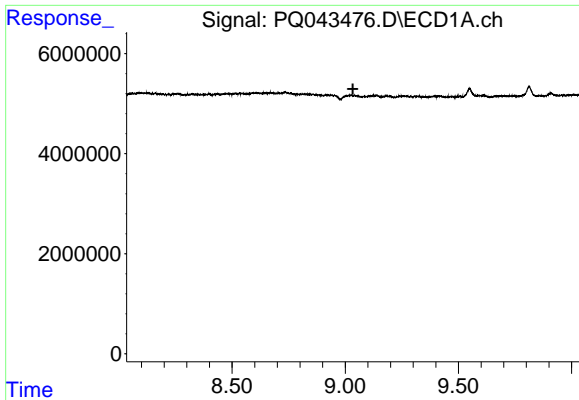
#28 AR-1254-3

R.T.: 0.000 min
 Exp R.T. : 8.732 min
 Response: 0
 Conc: N.D.



#28 AR-1254-3

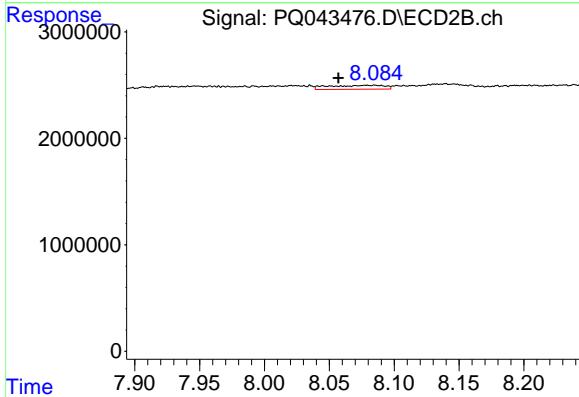
R.T.: 7.796 min
 Delta R.T.: -0.013 min
 Response: 420345
 Conc: 5.64 ng/ml



#29 AR-1254-4

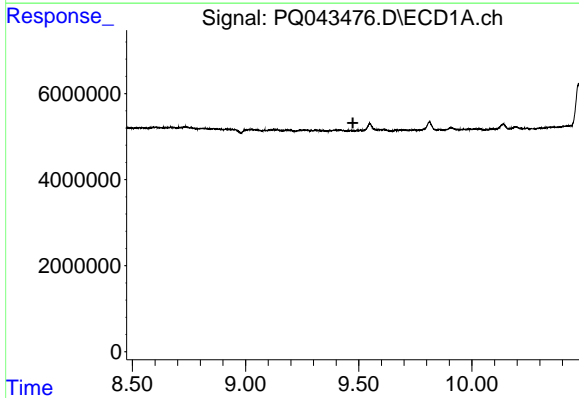
R.T.: 0.000 min
 Exp R.T.: 9.034 min
 Response: 0
 Conc: N.D.

Instrument :
 ECD_Q
 ClientSampled :



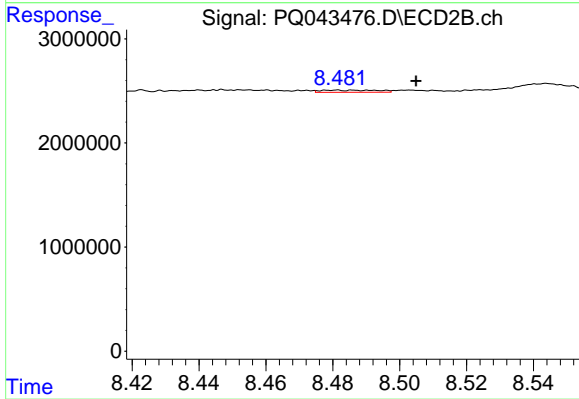
#29 AR-1254-4

R.T.: 8.085 min
 Delta R.T.: 0.028 min
 Response: 1107221
 Conc: 20.01 ng/ml



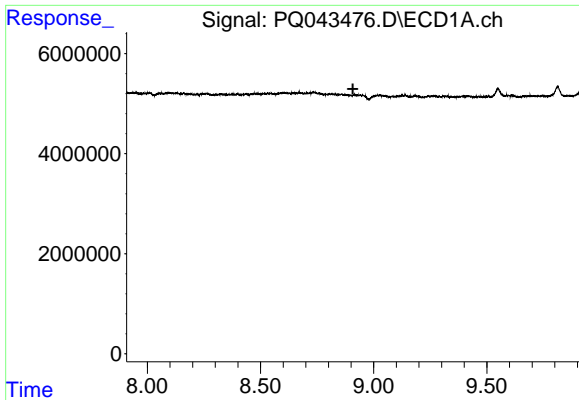
#30 AR-1254-5

R.T.: 0.000 min
 Exp R.T.: 9.474 min
 Response: 0
 Conc: N.D.



#30 AR-1254-5

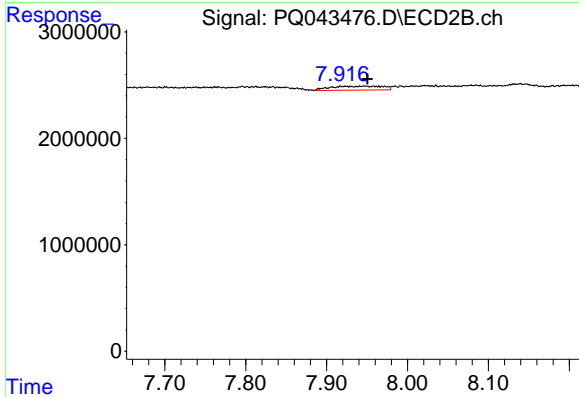
R.T.: 8.486 min
 Delta R.T.: -0.019 min
 Response: 248730
 Conc: 3.05 ng/ml



#31 AR-1260-1

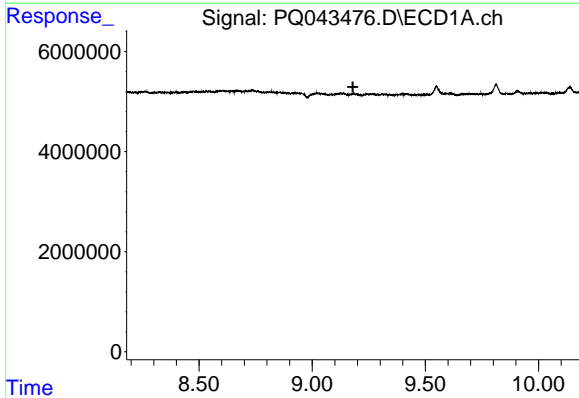
R.T.: 0.000 min
 Exp R.T.: 8.908 min
 Response: 0
 Conc: N.D.

Instrument :
 ECD_Q
 ClientSampleId :



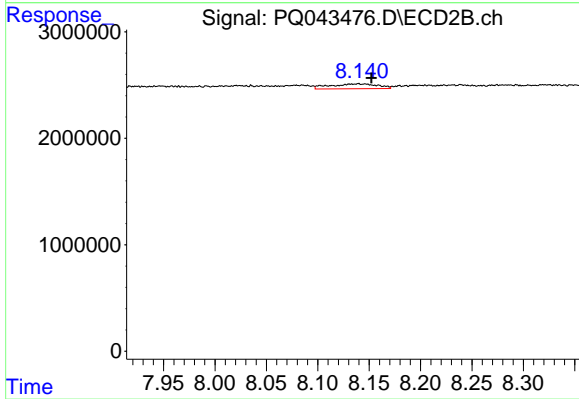
#31 AR-1260-1

R.T.: 7.918 min
 Delta R.T.: -0.033 min
 Response: 1669014
 Conc: 28.75 ng/ml



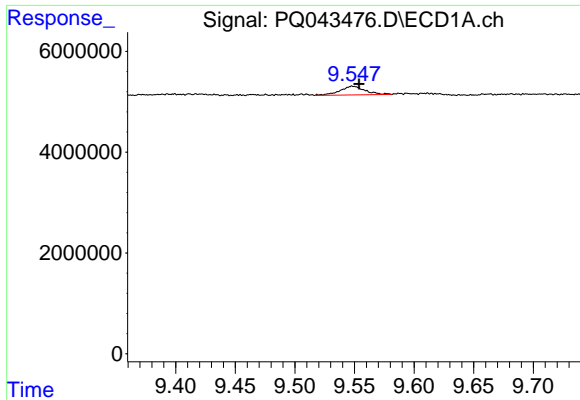
#32 AR-1260-2

R.T.: 0.000 min
 Exp R.T.: 9.180 min
 Response: 0
 Conc: N.D.



#32 AR-1260-2

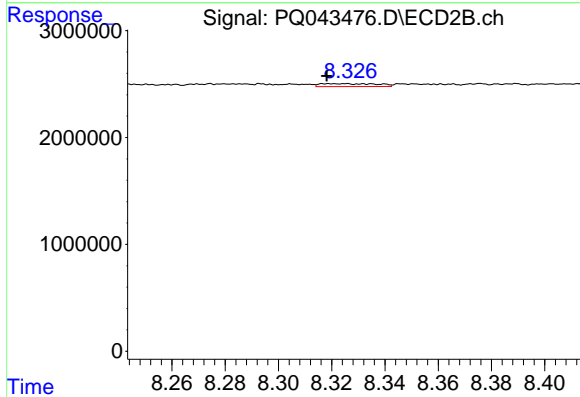
R.T.: 8.140 min
 Delta R.T.: -0.012 min
 Response: 1493860
 Conc: 19.54 ng/ml



#33 AR-1260-3

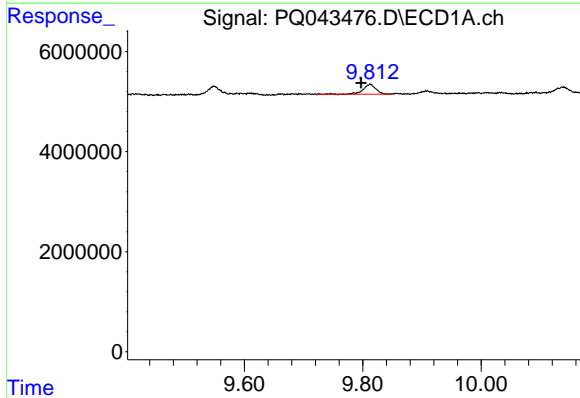
R.T.: 9.549 min
 Delta R.T.: -0.005 min
 Response: 2503650
 Conc: 18.24 ng/ml

Instrument :
 ECD_Q
 ClientSampleId :



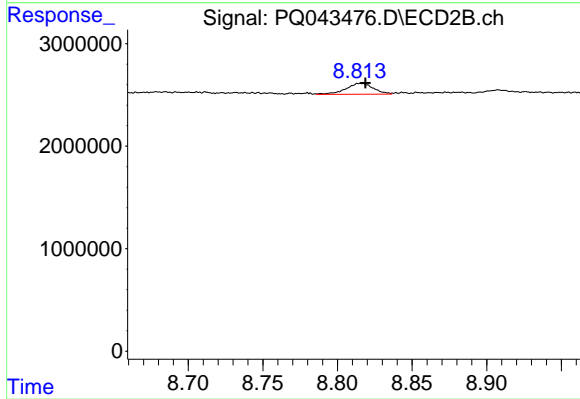
#33 AR-1260-3

R.T.: 8.325 min
 Delta R.T.: 0.007 min
 Response: 401226
 Conc: 5.72 ng/ml



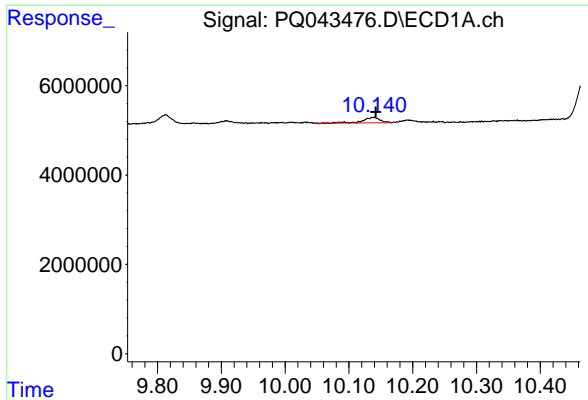
#34 AR-1260-4

R.T.: 9.813 min
 Delta R.T.: 0.016 min
 Response: 3013911
 Conc: 17.73 ng/ml



#34 AR-1260-4

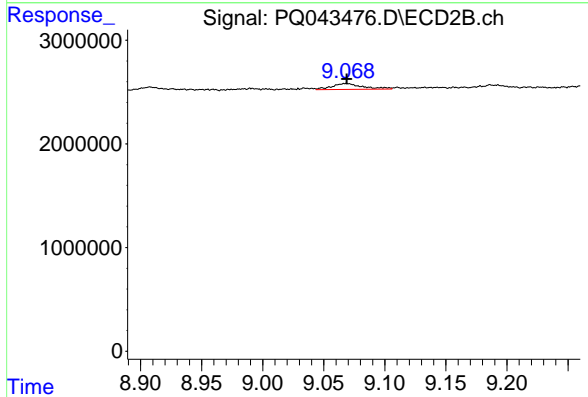
R.T.: 8.815 min
 Delta R.T.: -0.003 min
 Response: 1367095
 Conc: 20.74 ng/ml



#35 AR-1260-5

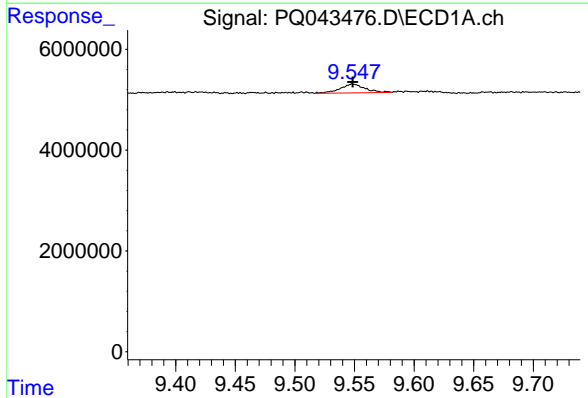
R.T.: 10.139 min
 Delta R.T.: -0.003 min
 Response: 2218857
 Conc: 5.64 ng/ml

Instrument :
 ECD_Q
 ClientSampleId :



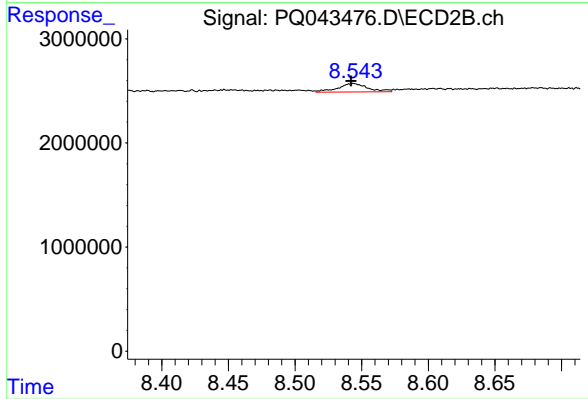
#35 AR-1260-5

R.T.: 9.069 min
 Delta R.T.: 0.000 min
 Response: 1009815
 Conc: 5.38 ng/ml



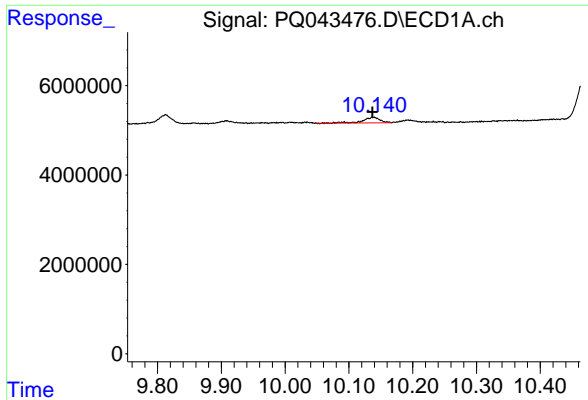
#36 AR-1262-1

R.T.: 9.549 min
 Delta R.T.: 0.000 min
 Response: 2503650
 Conc: 11.38 ng/ml



#36 AR-1262-1

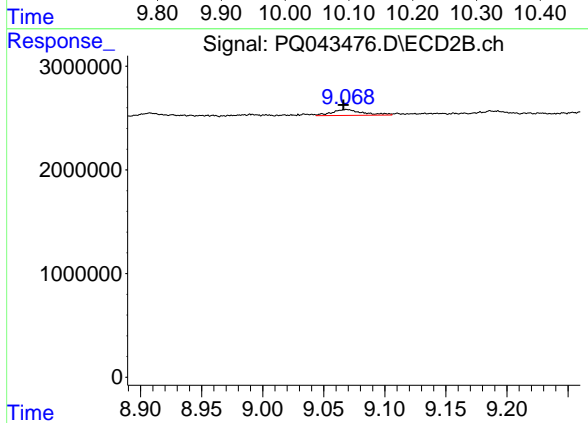
R.T.: 8.544 min
 Delta R.T.: 0.002 min
 Response: 1268676
 Conc: 12.83 ng/ml



#37 AR-1262-2

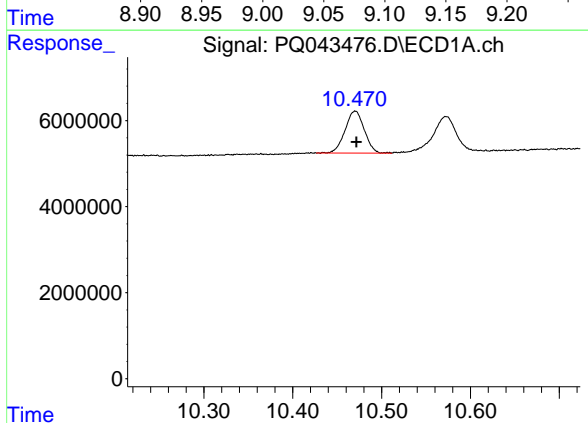
R.T.: 10.139 min
 Delta R.T.: 0.003 min
 Response: 2218857
 Conc: 4.34 ng/ml

Instrument :
 ECD_Q
 ClientSampleId :



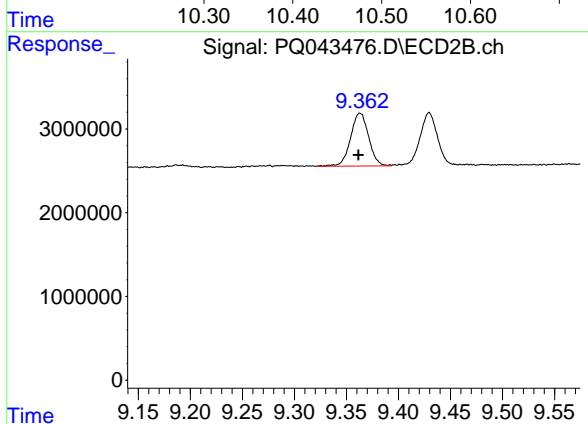
#37 AR-1262-2

R.T.: 9.069 min
 Delta R.T.: 0.002 min
 Response: 1009815
 Conc: 4.52 ng/ml



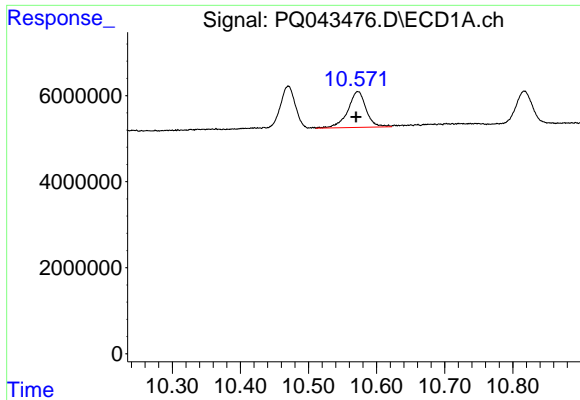
#38 AR-1262-3

R.T.: 10.470 min
 Delta R.T.: -0.001 min
 Response: 14705851
 Conc: 38.32 ng/ml



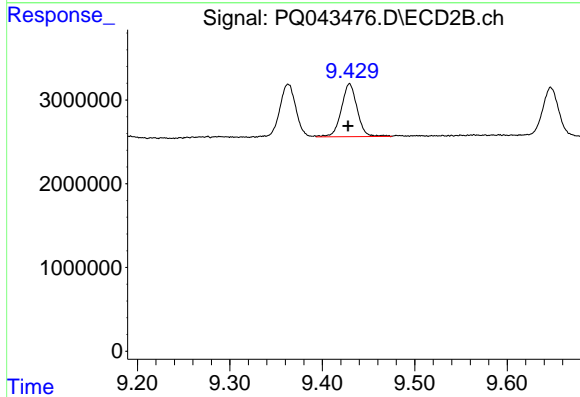
#38 AR-1262-3

R.T.: 9.363 min
 Delta R.T.: 0.002 min
 Response: 7629510
 Conc: 66.31 ng/ml

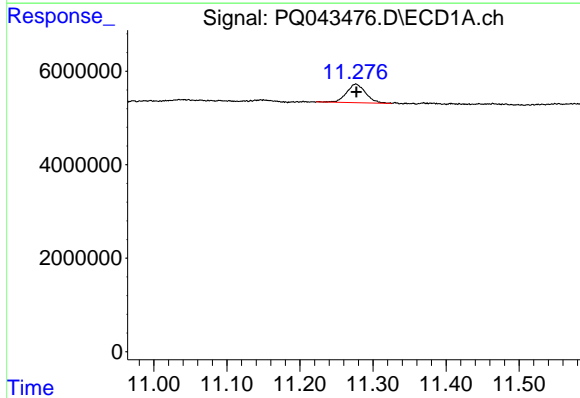


#39 AR-1262-4
 R.T.: 10.573 min
 Delta R.T.: 0.003 min
 Response: 15556685
 Conc: 91.12 ng/ml

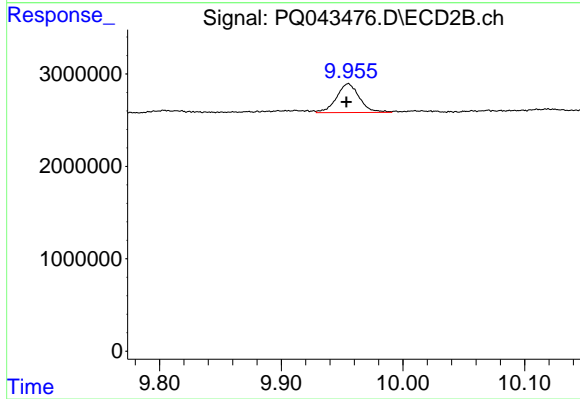
Instrument :
 ECD_Q
 ClientSampled :



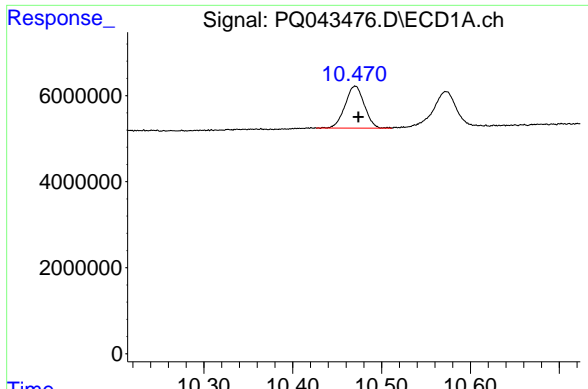
#39 AR-1262-4
 R.T.: 9.430 min
 Delta R.T.: 0.002 min
 Response: 7501216
 Conc: 33.29 ng/ml



#40 AR-1262-5
 R.T.: 11.277 min
 Delta R.T.: 0.000 min
 Response: 7227506
 Conc: 24.83 ng/ml



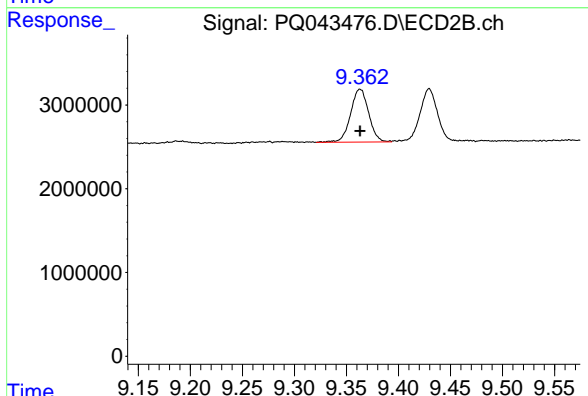
#40 AR-1262-5
 R.T.: 9.955 min
 Delta R.T.: 0.002 min
 Response: 4099291
 Conc: 26.53 ng/ml



#41 AR-1268-1

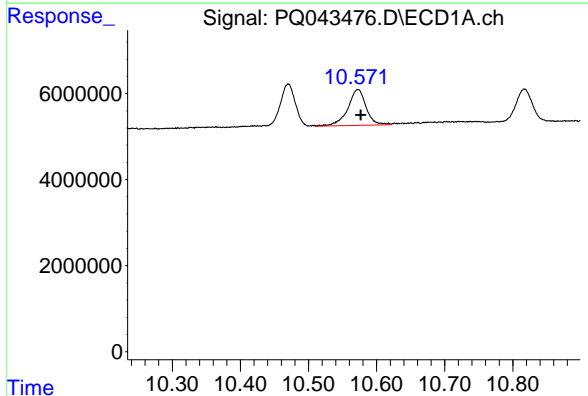
R.T.: 10.470 min
 Delta R.T.: -0.003 min
 Response: 14705851
 Conc: 22.96 ng/ml

Instrument :
 ECD_Q
 ClientSampleId :



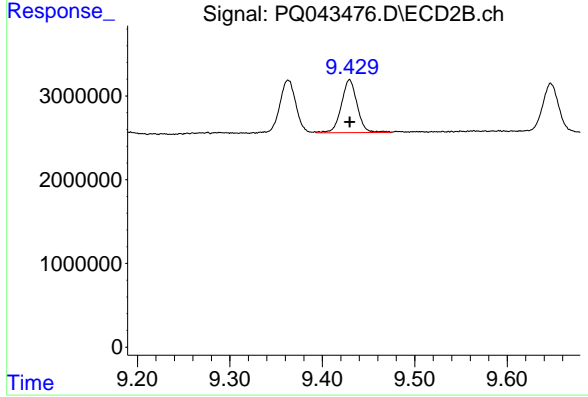
#41 AR-1268-1

R.T.: 9.363 min
 Delta R.T.: 0.000 min
 Response: 7629510
 Conc: 23.34 ng/ml



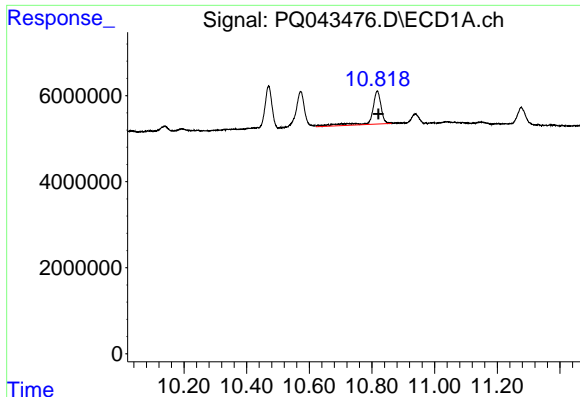
#42 AR-1268-2

R.T.: 10.573 min
 Delta R.T.: -0.004 min
 Response: 15556685
 Conc: 25.03 ng/ml



#42 AR-1268-2

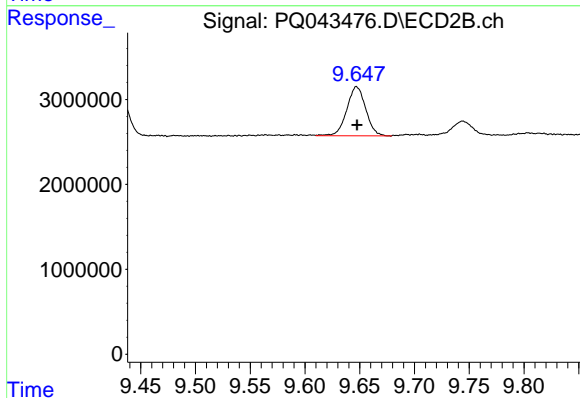
R.T.: 9.430 min
 Delta R.T.: 0.000 min
 Response: 7501216
 Conc: 23.45 ng/ml



#43 AR-1268-3

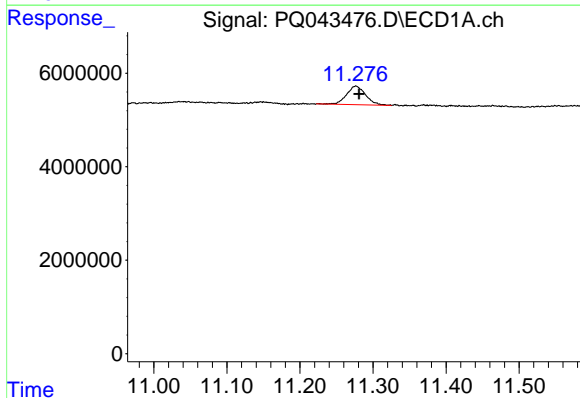
R.T.: 10.817 min
 Delta R.T.: -0.004 min
 Response: 15737176
 Conc: 29.69 ng/ml

Instrument :
 ECD_Q
 ClientSampled :



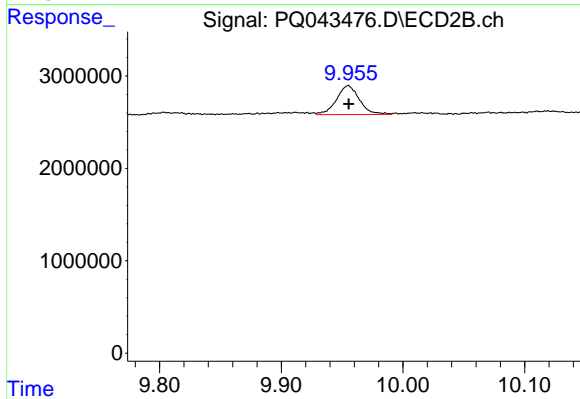
#43 AR-1268-3

R.T.: 9.647 min
 Delta R.T.: 0.000 min
 Response: 6972039
 Conc: 24.60 ng/ml



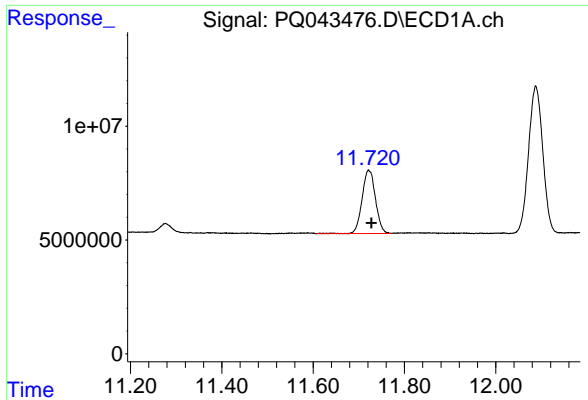
#44 AR-1268-4

R.T.: 11.277 min
 Delta R.T.: -0.004 min
 Response: 7227506
 Conc: 24.91 ng/ml



#44 AR-1268-4

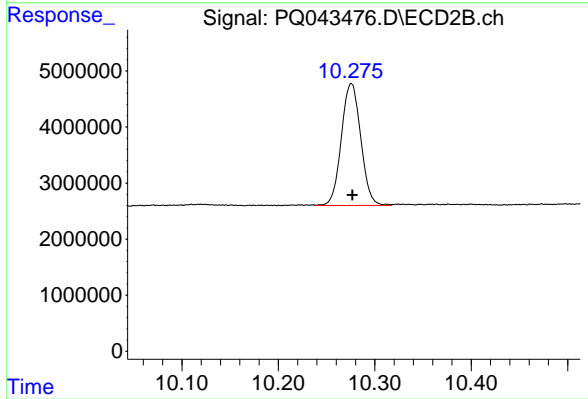
R.T.: 9.955 min
 Delta R.T.: 0.000 min
 Response: 4099291
 Conc: 25.22 ng/ml



#45 AR-1268-5

R.T.: 11.721 min
Delta R.T.: -0.006 min
Response: 56751021
Conc: 23.80 ng/ml

Instrument :
ECD_Q
ClientSampleId :



#45 AR-1268-5

R.T.: 10.276 min
Delta R.T.: 0.000 min
Response: 30310917
Conc: 24.14 ng/ml