

Data Path : Z:\pestpcbsrv\HPCHEM1\ECD_Q\Data\PQ091219\
 Data File : PQ043514.D
 Signal(s) : Signal #1: ECD1A.ch Signal #2: ECD2B.ch
 Acq On : 12 Sep 2019 16:09
 Operator : SM\AJ
 Sample : AR1660ICC750
 Misc :
 ALS Vial : 4 Sample Multiplier: 1

Instrument :
 ECD_Q
 ClientSampleId :
 AR1660ICC750

Integration File signal 1: autoint1.e
 Integration File signal 2: autoint2.e
 Quant Time: Sep 13 02:24:09 2019
 Quant Method : Z:\pestpcbsrv\HPCHEM1\ECD_Q\Method\PQ091219.M
 Quant Title : GC EXTRACTABLES
 QLast Update : Fri Sep 13 02:19:12 2019
 Response via : Initial Calibration
 Integrator: ChemStation

Volume Inj. : 2 µl
 Signal #1 Phase : ZB-MR1 Signal #2 Phase: ZB-MR2
 Signal #1 Info : 30Mx0.32mmx 0.50µ Signal #2 Info : 30M x 0.32mm x 0.25µm

Compound	RT#1	RT#2	Resp#1	Resp#2	ng/ml	ng/ml

System Monitoring Compounds						
1) SA Tetrachlo...	5.697	4.783	190.6E6	76156083	74.806	74.450
2) SA Decachlor...	12.088	10.556	632.0E6	282.8E6	77.492	76.398
Target Compounds						
3) L1 AR-1016-1	7.140	6.238	76801895	33247036	746.968	753.851
4) L1 AR-1016-2	7.165	6.262	109.7E6	43646878	745.045	732.825
5) L1 AR-1016-3	7.236	6.475	67222375	23528323	742.136	745.909
6) L1 AR-1016-4	7.349	6.529	55626323	19447917	738.452	741.419
7) L1 AR-1016-5	7.683	6.782	57327009	25693983	746.451	745.479
31) L7 AR-1260-1	8.904	7.949	145.6E6	57456470	815.178	729.150
32) L7 AR-1260-2	9.175	8.151	175.2E6	75166905	766.207	733.910
33) L7 AR-1260-3	9.549	8.317	139.6E6	68721075	750.896	735.605
34) L7 AR-1260-4	9.791	8.816	168.4E6	62438119	746.007	743.068
35) L7 AR-1260-5	10.137	9.066	407.4E6	163.5E6	788.500	759.545

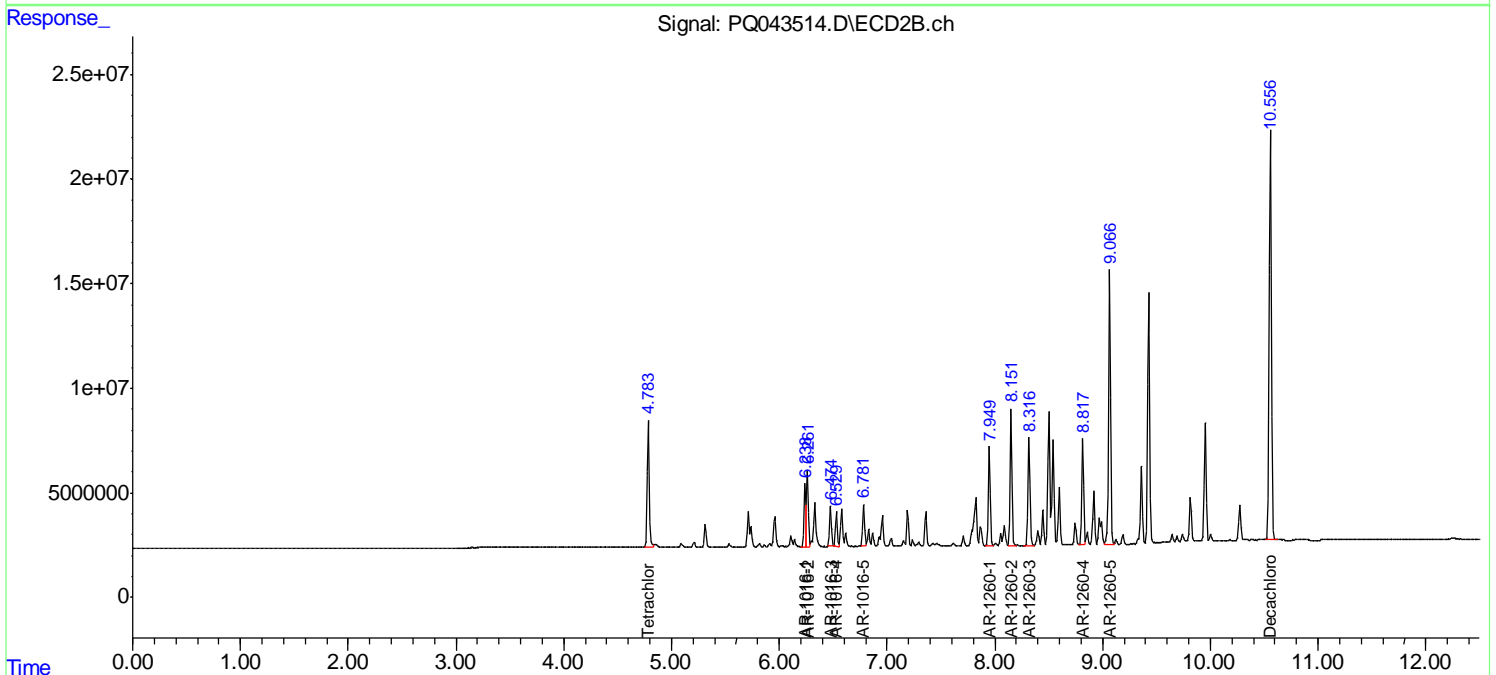
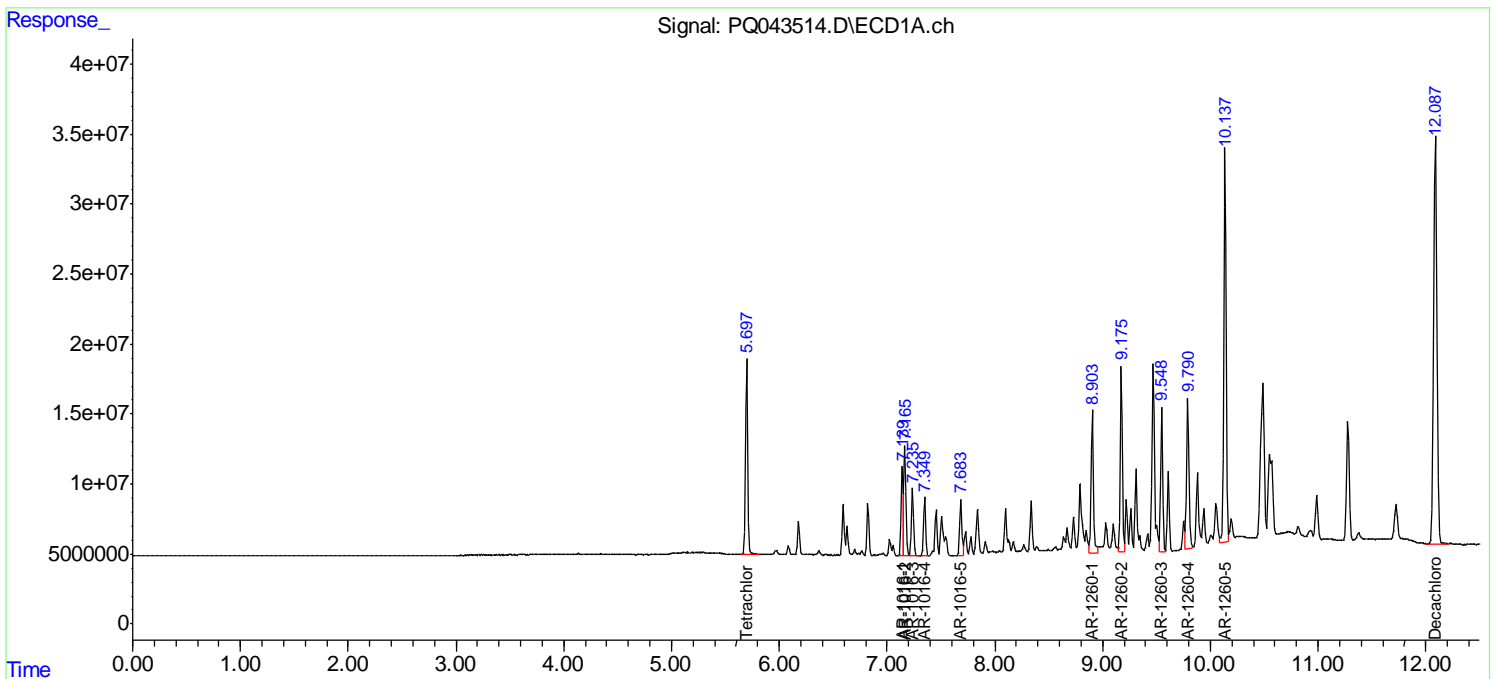
(f)=RT Delta > 1/2 Window (#)=Amounts differ by > 25% (m)=manual int.

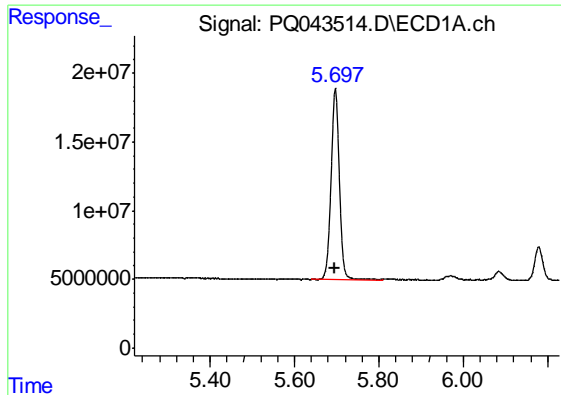
Data Path : Z:\pestpcbsrv\HPCHEM1\ECD_Q\Data\PQ091219\
 Data File : PQ043514.D
 Signal(s) : Signal #1: ECD1A.ch Signal #2: ECD2B.ch
 Acq On : 12 Sep 2019 16:09
 Operator : SM\AJ
 Sample : AR1660ICC750
 Misc :
 ALS Vial : 4 Sample Multiplier: 1

Instrument :
 ECD_Q
 Client Sampled :
 AR1660ICC750

Integration File signal 1: autoint1.e
 Integration File signal 2: autoint2.e
 Quant Time: Sep 13 02:24:09 2019
 Quant Method : Z:\pestpcbsrv\HPCHEM1\ECD_Q\Method\PQ091219.M
 Quant Title : GC EXTRACTABLES
 QLast Update : Fri Sep 13 02:19:12 2019
 Response via : Initial Calibration
 Integrator: ChemStation

Volume Inj. : 2 µl
 Signal #1 Phase : ZB-MR1 Signal #2 Phase: ZB-MR2
 Signal #1 Info : 30Mx0.32mmx 0.50µ Signal #2 Info : 30M x 0.32mm x 0.25µm

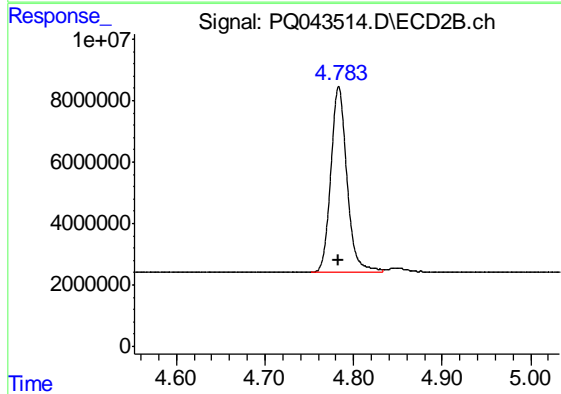




#1 Tetrachloro-m-xylene

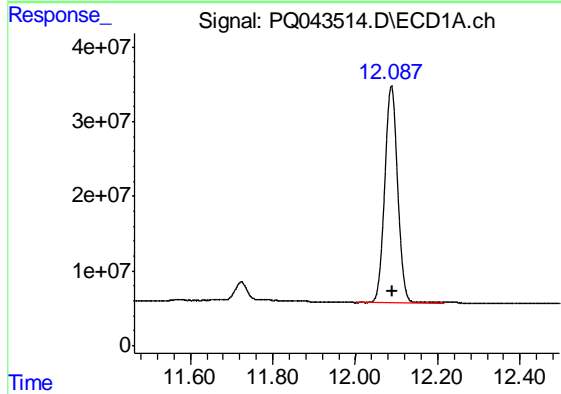
R.T.: 5.697 min
 Delta R.T.: 0.000 min
 Response: 190607481
 Conc: 74.81 ng/ml

Instrument :
 ECD_Q
 ClientSampleId :
 AR1660ICC750



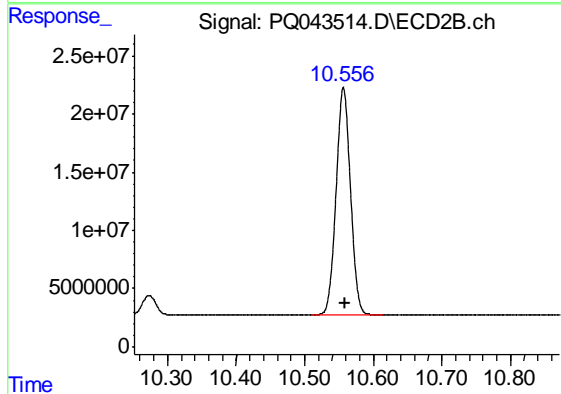
#1 Tetrachloro-m-xylene

R.T.: 4.783 min
 Delta R.T.: 0.000 min
 Response: 76156083
 Conc: 74.45 ng/ml



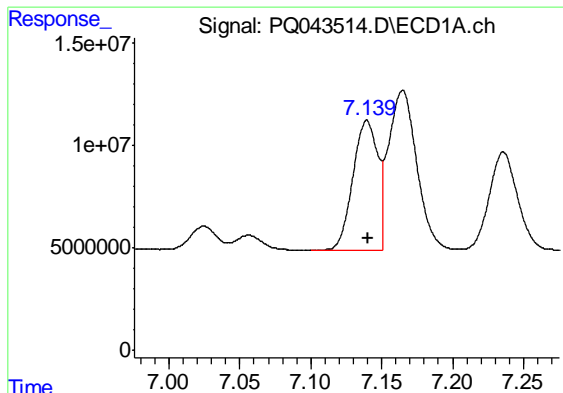
#2 Decachlorobiphenyl

R.T.: 12.088 min
 Delta R.T.: -0.002 min
 Response: 631978505
 Conc: 77.49 ng/ml



#2 Decachlorobiphenyl

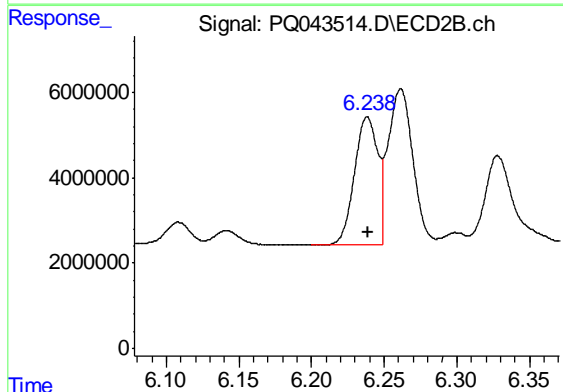
R.T.: 10.556 min
 Delta R.T.: -0.001 min
 Response: 282844179
 Conc: 76.40 ng/ml



#3 AR-1016-1

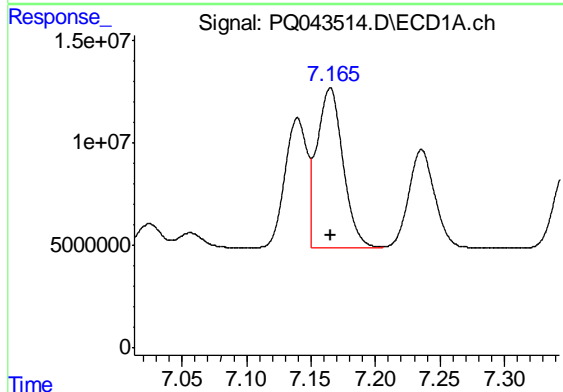
R.T.: 7.140 min
 Delta R.T.: 0.000 min
 Response: 76801895
 Conc: 746.97 ng/ml

Instrument :
 ECD_Q
 ClientSampleId :
 AR1660ICC750



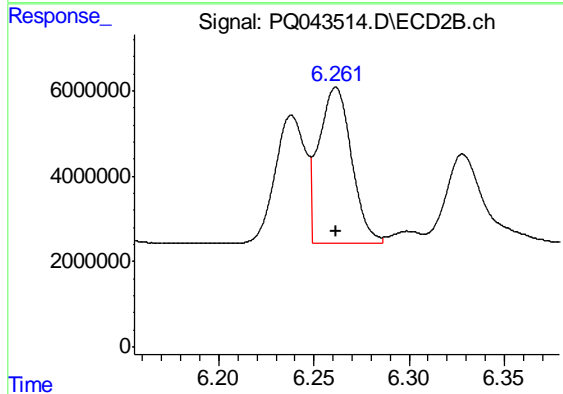
#3 AR-1016-1

R.T.: 6.238 min
 Delta R.T.: 0.000 min
 Response: 33247036
 Conc: 753.85 ng/ml



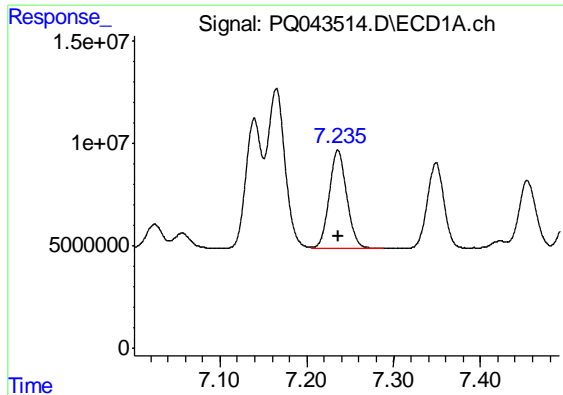
#4 AR-1016-2

R.T.: 7.165 min
 Delta R.T.: 0.000 min
 Response: 109748450
 Conc: 745.04 ng/ml



#4 AR-1016-2

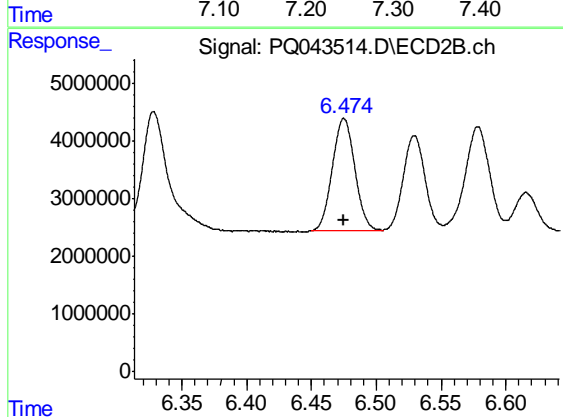
R.T.: 6.262 min
 Delta R.T.: 0.000 min
 Response: 43646878
 Conc: 732.82 ng/ml



#5 AR-1016-3

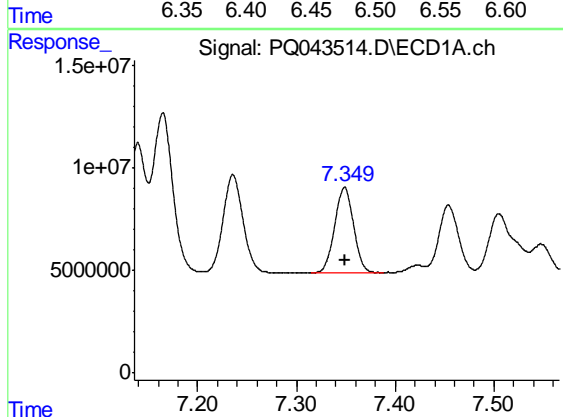
R.T.: 7.236 min
 Delta R.T.: 0.000 min
 Response: 67222375
 Conc: 742.14 ng/ml

Instrument :
 ECD_Q
 ClientSampleId :
 AR1660ICC750



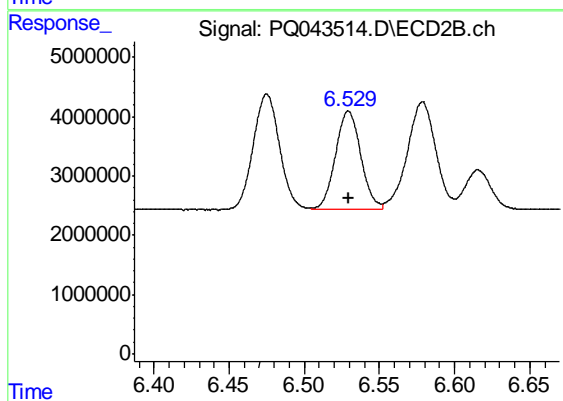
#5 AR-1016-3

R.T.: 6.475 min
 Delta R.T.: 0.000 min
 Response: 23528323
 Conc: 745.91 ng/ml



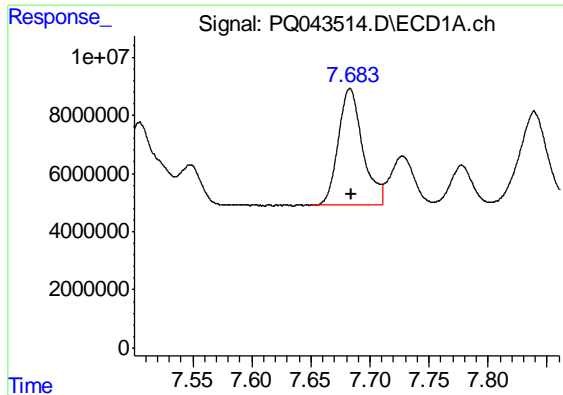
#6 AR-1016-4

R.T.: 7.349 min
 Delta R.T.: 0.000 min
 Response: 55626323
 Conc: 738.45 ng/ml



#6 AR-1016-4

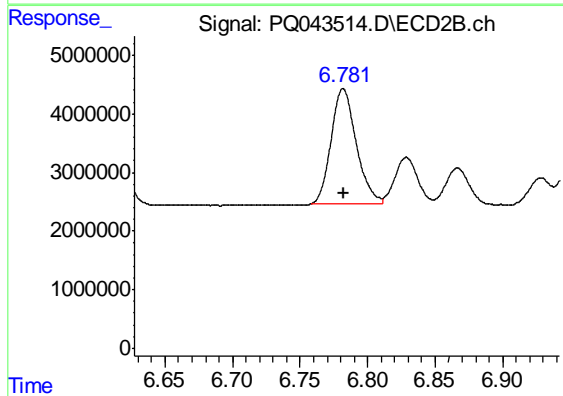
R.T.: 6.529 min
 Delta R.T.: 0.000 min
 Response: 19447917
 Conc: 741.42 ng/ml



#7 AR-1016-5

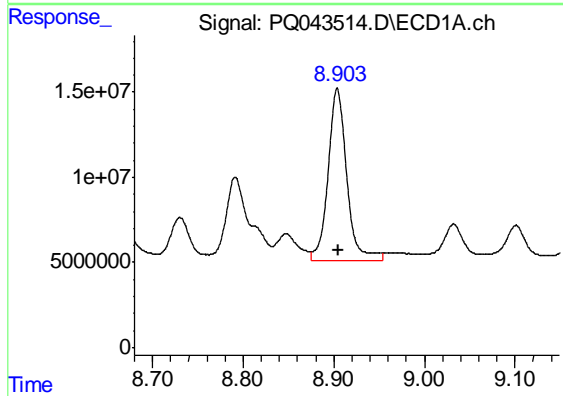
R.T.: 7.683 min
 Delta R.T.: 0.000 min
 Response: 57327009
 Conc: 746.45 ng/ml

Instrument :
 ECD_Q
 ClientSampleId :
 AR1660ICC750



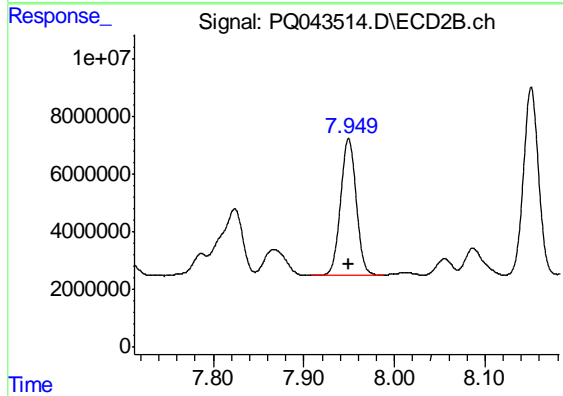
#7 AR-1016-5

R.T.: 6.782 min
 Delta R.T.: 0.000 min
 Response: 25693983
 Conc: 745.48 ng/ml



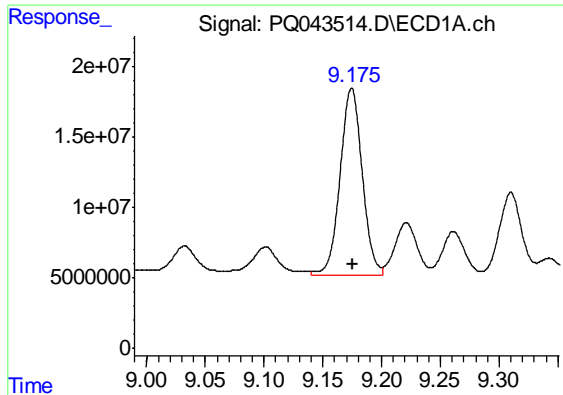
#31 AR-1260-1

R.T.: 8.904 min
 Delta R.T.: 0.000 min
 Response: 145609051
 Conc: 815.18 ng/ml



#31 AR-1260-1

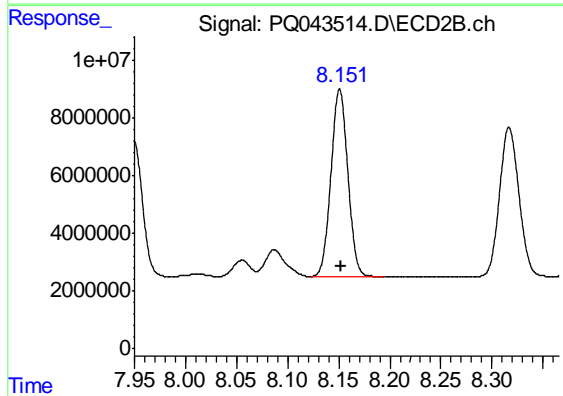
R.T.: 7.949 min
 Delta R.T.: 0.000 min
 Response: 57456470
 Conc: 729.15 ng/ml



#32 AR-1260-2

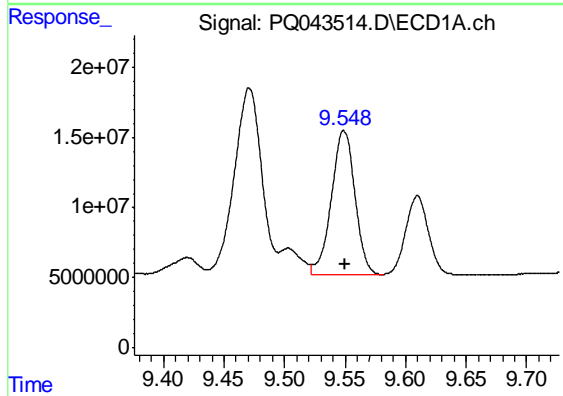
R.T.: 9.175 min
Delta R.T.: 0.000 min
Response: 175244987
Conc: 766.21 ng/ml

Instrument :
ECD_Q
ClientSampleId :
AR1660ICC750



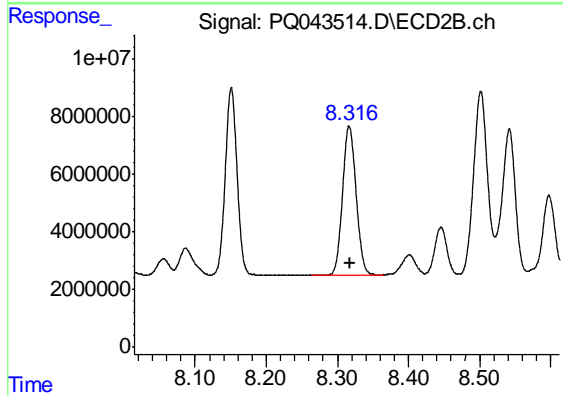
#32 AR-1260-2

R.T.: 8.151 min
Delta R.T.: -0.001 min
Response: 75166905
Conc: 733.91 ng/ml



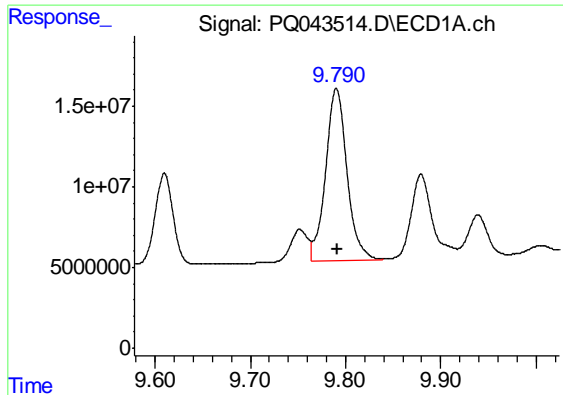
#33 AR-1260-3

R.T.: 9.549 min
Delta R.T.: 0.000 min
Response: 139556088
Conc: 750.90 ng/ml



#33 AR-1260-3

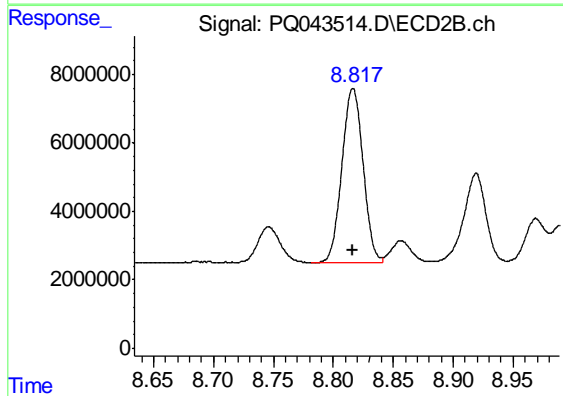
R.T.: 8.317 min
Delta R.T.: 0.000 min
Response: 68721075
Conc: 735.60 ng/ml



#34 AR-1260-4

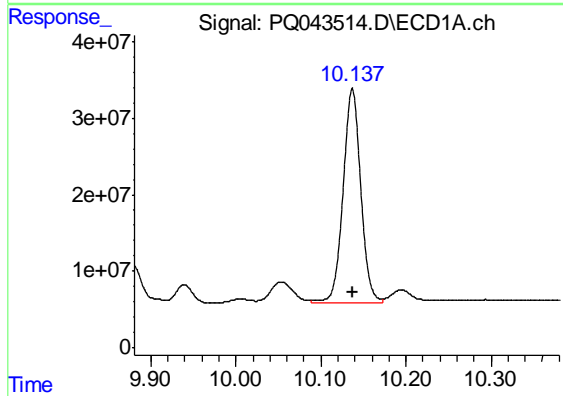
R.T.: 9.791 min
 Delta R.T.: 0.000 min
 Response: 168447270
 Conc: 746.01 ng/ml

Instrument :
 ECD_Q
 ClientSampleId :
 AR1660ICC750



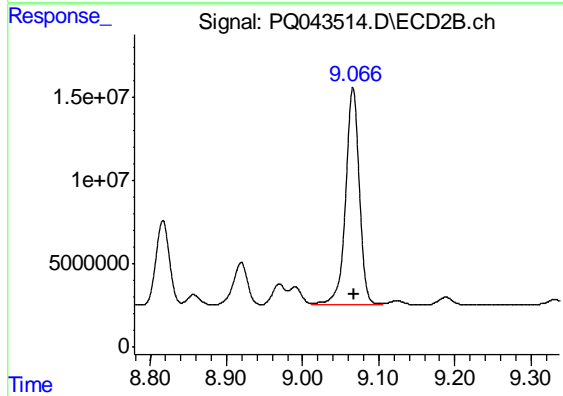
#34 AR-1260-4

R.T.: 8.816 min
 Delta R.T.: 0.000 min
 Response: 62438119
 Conc: 743.07 ng/ml



#35 AR-1260-5

R.T.: 10.137 min
 Delta R.T.: 0.000 min
 Response: 407428301
 Conc: 788.50 ng/ml



#35 AR-1260-5

R.T.: 9.066 min
 Delta R.T.: 0.000 min
 Response: 163481677
 Conc: 759.54 ng/ml