

Data Path : Z:\pestpcbsrv\HPCHEM1\ECD_Q\Data\PQ091324\
 Data File : PQ068594.D
 Signal(s) : Signal #1: ECD1A.ch Signal #2: ECD2B.ch
 Acq On : 13 Sep 2024 17:09
 Operator : YP\AJ
 Sample : P3922-01
 Misc :
 ALS Vial : 9 Sample Multiplier: 1

Instrument :
 ECD_Q
 ClientSampleId :
 COAN7

Integration File signal 1: autoint1.e
 Integration File signal 2: autoint2.e
 Quant Time: Sep 14 05:01:54 2024
 Quant Method : Z:\pestpcbsrv\HPCHEM1\ECD_Q\Method\PQ082724CLP.M
 Quant Title : GC EXTRACTABLES
 QLast Update : Wed Aug 28 02:08:25 2024
 Response via : Initial Calibration
 Integrator: ChemStation

Volume Inj. : 1 µl
 Signal #1 Phase : ZB MR1 Signal #2 Phase: ZB MR2
 Signal #1 Info : 30Mx0.32mmx 0.5µm Signal #2 Info : 30M x 0.32mm x 0.25µm

Compound	RT#1	RT#2	Resp#1	Resp#2	ng/ml	ng/ml
System Monitoring Compounds						
1) SA Tetrachlo...	3.438	2.821	78930269	75307781	9.991	10.633
2) SA Decachlor...	8.611	7.597	44139284	70348846	19.407	20.801
Target Compounds						
3) L1 AR-1016-1	4.559	0.000	5793243	0	25.632	N.D. #
4) L1 AR-1016-2	4.559	0.000	5793243	0	16.460	N.D. #
5) L1 AR-1016-3	4.628	0.000	8004295	0	36.777	N.D. #
6) L1 AR-1016-4	4.715	0.000	12469093	0	68.937	N.D. #
8) L2 AR-1221-1	0.000	3.091f	0	2109098	N.D.	24.684 #
9) L2 AR-1221-2	3.715	3.091	1403318	2109098	21.981	35.382 #
10) L2 AR-1221-3	3.800	3.211f	963403	944404	4.665	4.888
11) L3 AR-1232-1	3.800	3.211f	963403	944404	5.836	6.207
12) L3 AR-1232-2	4.292	0.000	8379117	0	92.253	N.D. #
13) L3 AR-1232-3	4.559	0.000	5793243	0	34.256	N.D. #
14) L3 AR-1232-4	4.715	0.000	12469093	0	144.317	N.D. #
15) L3 AR-1232-5	4.802	0.000	8622120	0	152.681	N.D. #
16) L4 AR-1242-1	4.559	0.000	5793243	0	28.342	N.D. #
17) L4 AR-1242-2	4.559	0.000	5793243	0	18.515	N.D. #
18) L4 AR-1242-3	4.628	0.000	8004295	0	40.910	N.D. #
19) L4 AR-1242-4	4.715	0.000	12469093	0	77.150	N.D. #
21) L5 AR-1248-1	4.559	0.000	5793243	0	37.629	N.D. #
22) L5 AR-1248-2	4.802	0.000	8622120	0	41.030	N.D. #
27) L6 AR-1254-2	5.616f	0.000	1190082	0	2.787	N.D. #
28) L6 AR-1254-3	5.920	0.000	1101303	0	2.452	N.D. #
30) L6 AR-1254-5	0.000	5.728	0	1907789	N.D.	3.915 #
31) L7 AR-1260-1	0.000	5.247	0	4226422	N.D.	11.621 #
34) L7 AR-1260-4	6.976f	0.000	543806	0	1.781	N.D. #
35) L7 AR-1260-5	7.236	0.000	325705	0	0.558	N.D. #
36) L8 AR-1262-1	0.000	5.728f	0	1907789	N.D.	3.708 #
37) L8 AR-1262-2	7.236	0.000	325705	0	0.477	N.D. #
39) L8 AR-1262-4	7.618f	0.000	500517	0	1.461	N.D. #
42) L9 AR-1268-2	7.618	0.000	500517	0	0.697	N.D. #
43) L9 AR-1268-3	7.774	6.825	393115	1085692	0.680	1.331 #
45) L9 AR-1268-5	8.379	0.000	819752	0	0.504	N.D. #

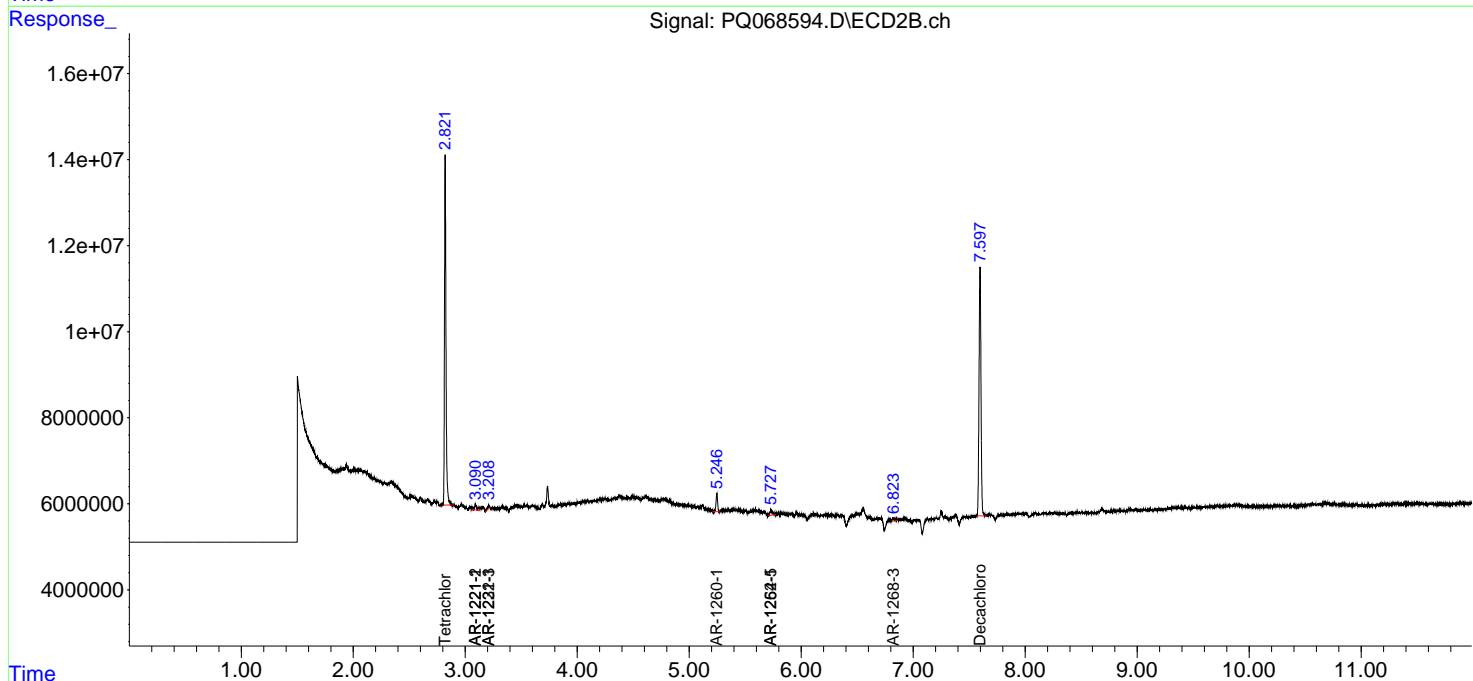
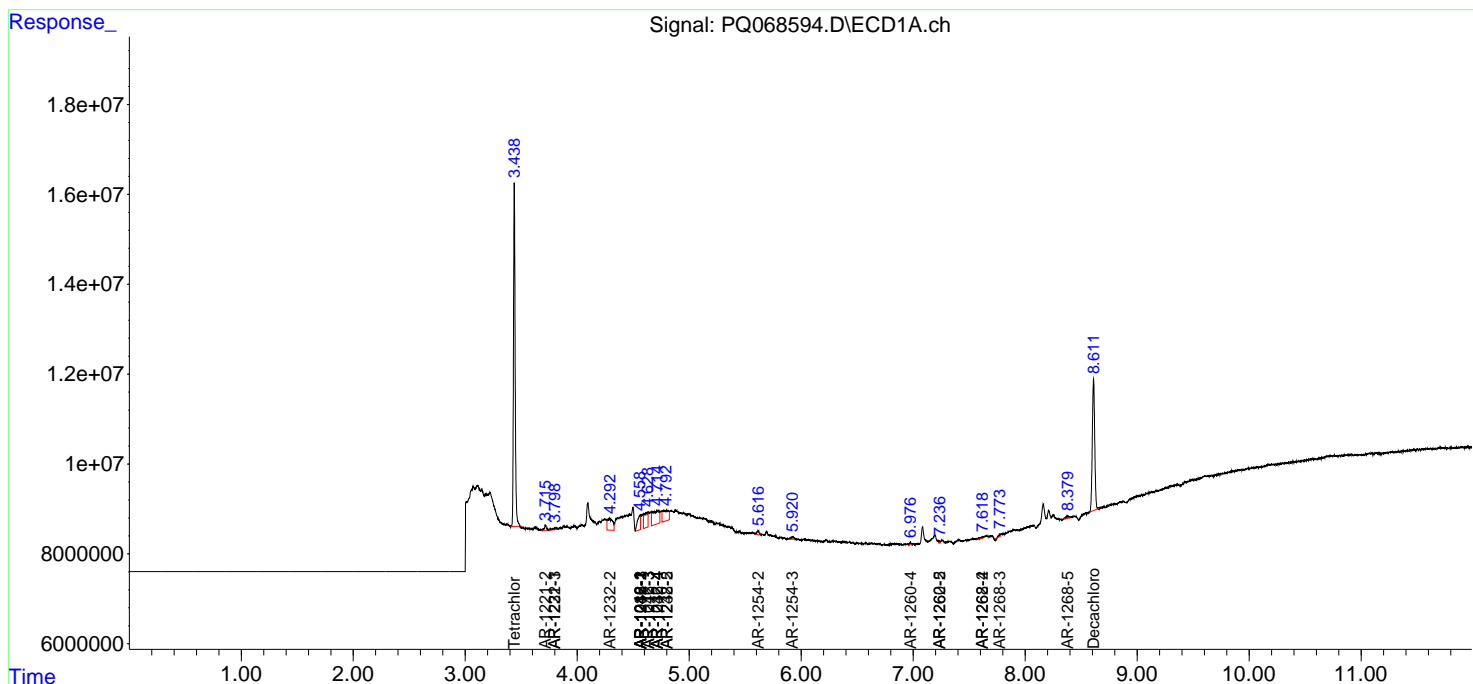
(f)=RT Delta > 1/2 Window (#)=Amounts differ by > 25% (m)=manual int.

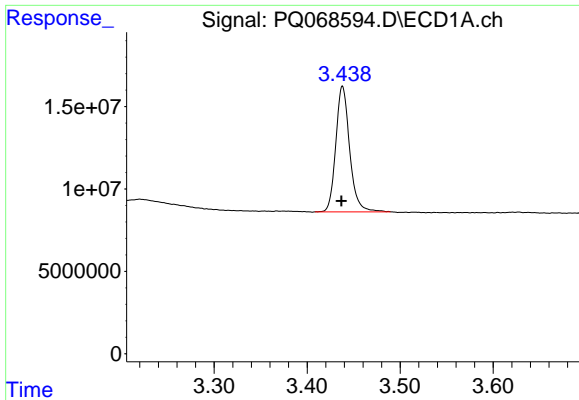
Data Path : Z:\pestpcbsrv\HPCHEM1\ECD_Q\Data\PQ091324\
 Data File : PQ068594.D
 Signal(s) : Signal #1: ECD1A.ch Signal #2: ECD2B.ch
 Acq On : 13 Sep 2024 17:09
 Operator : YP\AJ
 Sample : P3922-01
 Misc :
 ALS Vial : 9 Sample Multiplier: 1

Instrument :
 ECD_Q
 ClientSampleId :
 COAN7

Integration File signal 1: autoint1.e
 Integration File signal 2: autoint2.e
 Quant Time: Sep 14 05:01:54 2024
 Quant Method : Z:\pestpcbsrv\HPCHEM1\ECD_Q\Method\PQ082724CLP.M
 Quant Title : GC EXTRACTABLES
 QLast Update : Wed Aug 28 02:08:25 2024
 Response via : Initial Calibration
 Integrator: ChemStation

Volume Inj. : 1 µl
 Signal #1 Phase : ZB MR1 Signal #2 Phase: ZB MR2
 Signal #1 Info : 30Mx0.32mmx 0.5µm Signal #2 Info : 30M x 0.32mm x 0.25µm

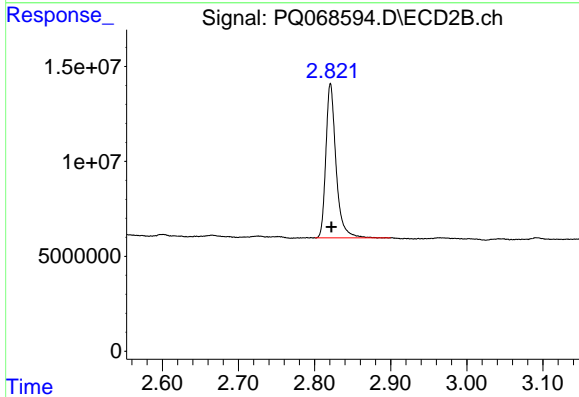




#1 Tetrachloro-m-xylene

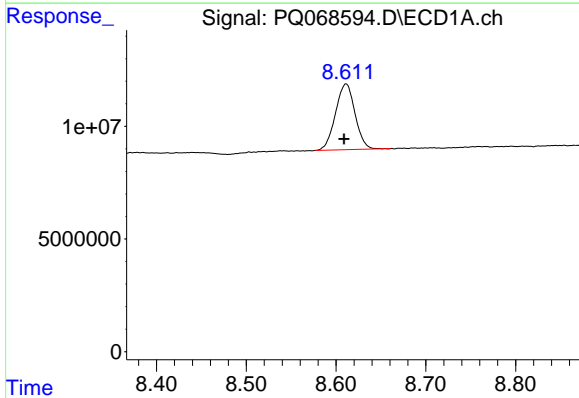
R.T.: 3.438 min
 Delta R.T.: 0.001 min
 Response: 78930269
 Conc: 9.99 ng/ml

Instrument :
 ECD_Q
 ClientSampleId :
 C0AN7



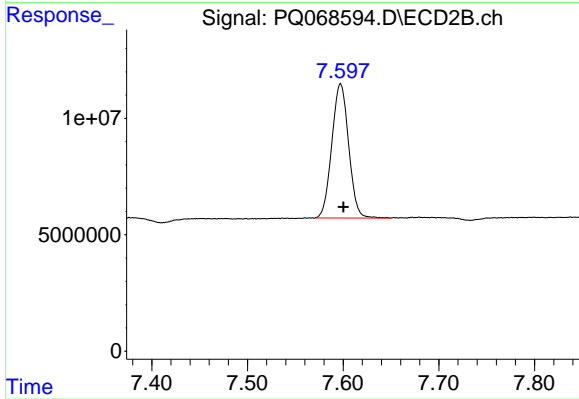
#1 Tetrachloro-m-xylene

R.T.: 2.821 min
 Delta R.T.: 0.000 min
 Response: 75307781
 Conc: 10.63 ng/ml



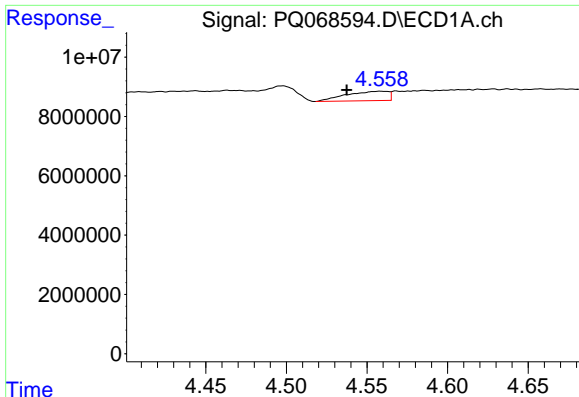
#2 Decachlorobiphenyl

R.T.: 8.611 min
 Delta R.T.: 0.002 min
 Response: 44139284
 Conc: 19.41 ng/ml



#2 Decachlorobiphenyl

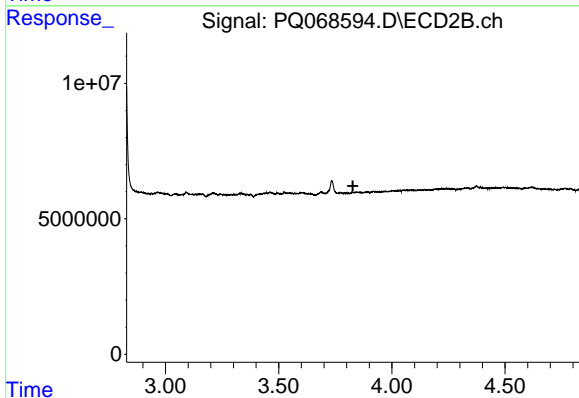
R.T.: 7.597 min
 Delta R.T.: -0.003 min
 Response: 70348846
 Conc: 20.80 ng/ml



#3 AR-1016-1

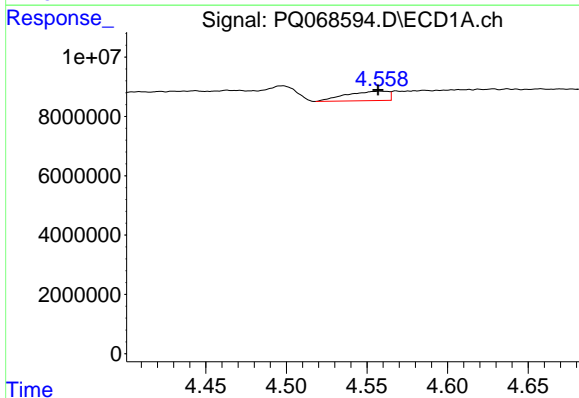
R.T.: 4.559 min
 Delta R.T.: 0.021 min
 Response: 5793243
 Conc: 25.63 ng/ml

Instrument :
 ECD_Q
 ClientSampleId :
 C0AN7



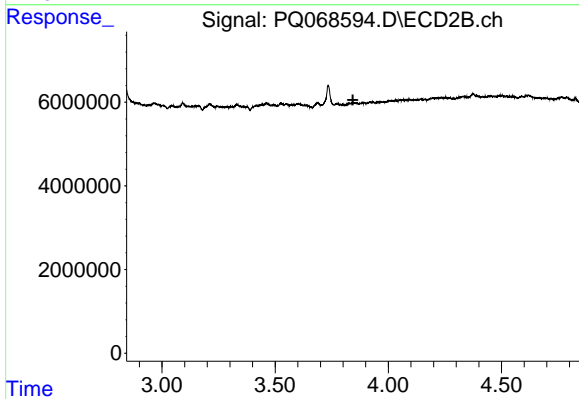
#3 AR-1016-1

R.T.: 0.000 min
 Exp R.T. : 3.828 min
 Response: 0
 Conc: N.D.



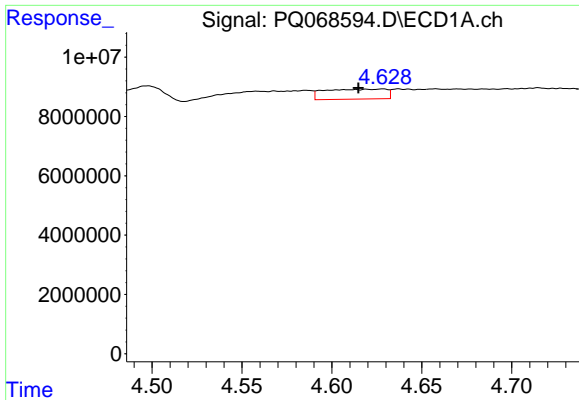
#4 AR-1016-2

R.T.: 4.559 min
 Delta R.T.: 0.002 min
 Response: 5793243
 Conc: 16.46 ng/ml



#4 AR-1016-2

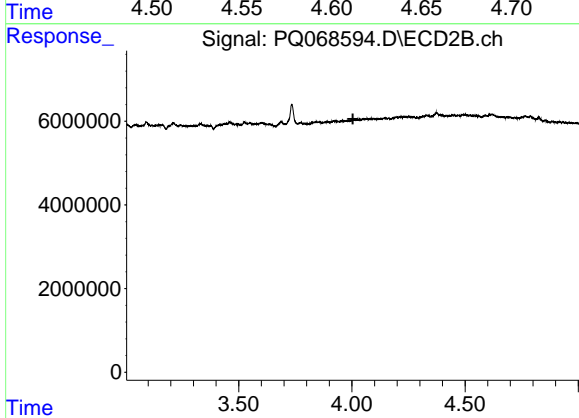
R.T.: 0.000 min
 Exp R.T. : 3.844 min
 Response: 0
 Conc: N.D.



#5 AR-1016-3

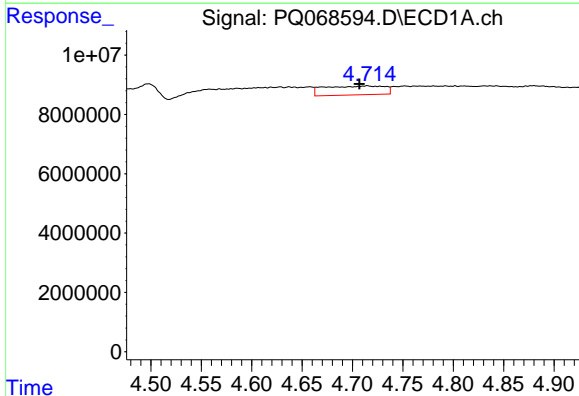
R.T.: 4.628 min
Delta R.T.: 0.014 min
Response: 8004295
Conc: 36.78 ng/ml

Instrument :
ECD_Q
ClientSampleId :
C0AN7



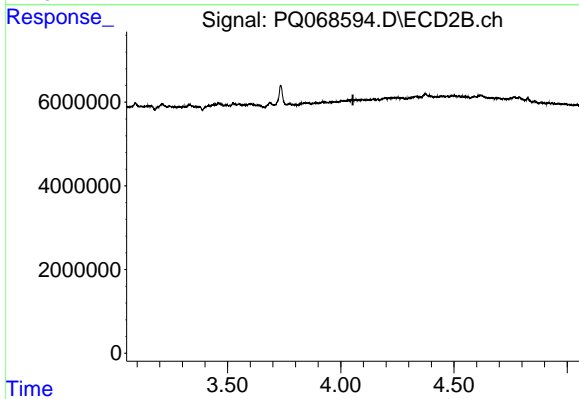
#5 AR-1016-3

R.T.: 0.000 min
Exp R.T. : 4.005 min
Response: 0
Conc: N.D.



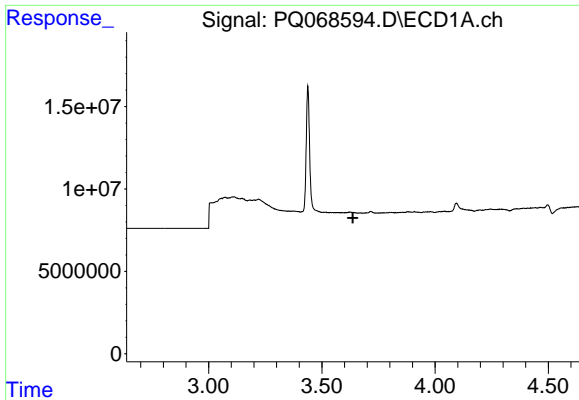
#6 AR-1016-4

R.T.: 4.715 min
Delta R.T.: 0.008 min
Response: 12469093
Conc: 68.94 ng/ml



#6 AR-1016-4

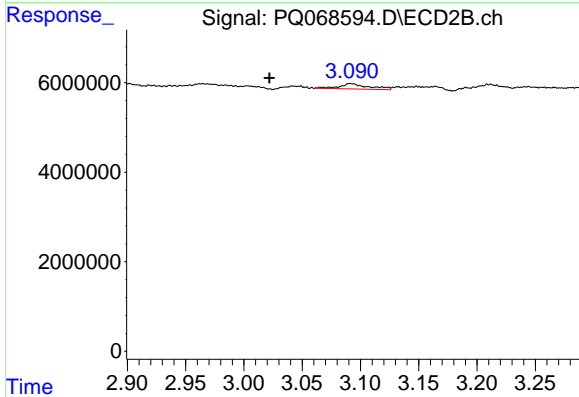
R.T.: 0.000 min
Exp R.T. : 4.053 min
Response: 0
Conc: N.D.



#8 AR-1221-1

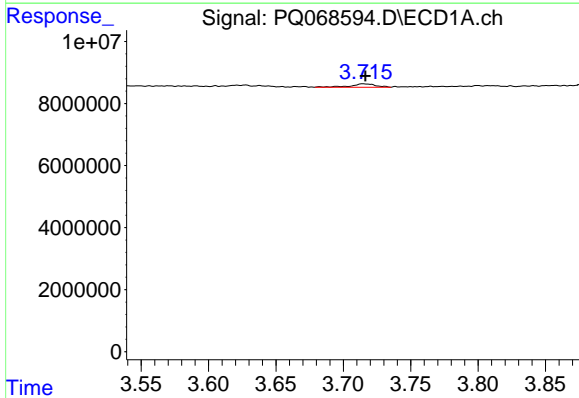
R.T.: 0.000 min
 Exp R.T.: 3.637 min
 Response: 0
 Conc: N.D.

Instrument : ECD_Q
 ClientSampleId : C0AN7



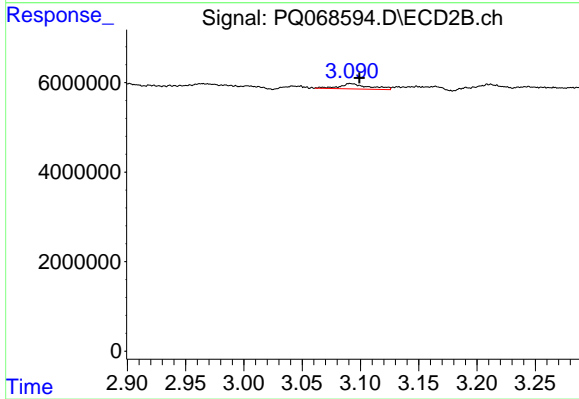
#8 AR-1221-1

R.T.: 3.091 min
 Delta R.T.: 0.069 min
 Response: 2109098
 Conc: 24.68 ng/ml



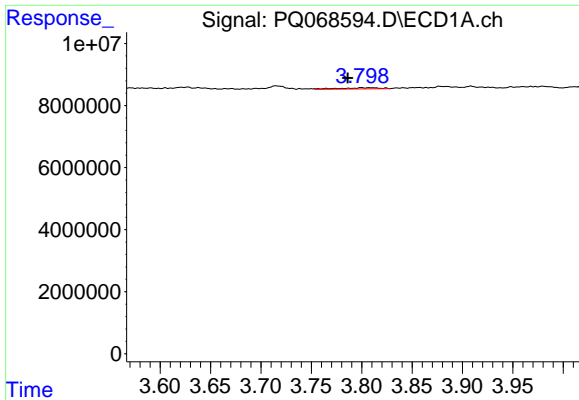
#9 AR-1221-2

R.T.: 3.715 min
 Delta R.T.: -0.002 min
 Response: 1403318
 Conc: 21.98 ng/ml



#9 AR-1221-2

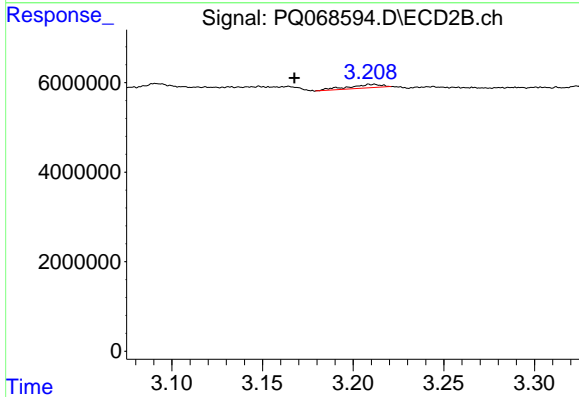
R.T.: 3.091 min
 Delta R.T.: -0.008 min
 Response: 2109098
 Conc: 35.38 ng/ml



#10 AR-1221-3

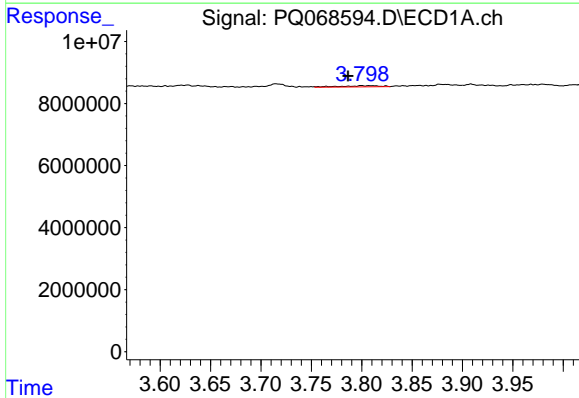
R.T.: 3.800 min
 Delta R.T.: 0.014 min
 Response: 963403
 Conc: 4.66 ng/ml

Instrument :
 ECD_Q
 ClientSampleId :
 C0AN7



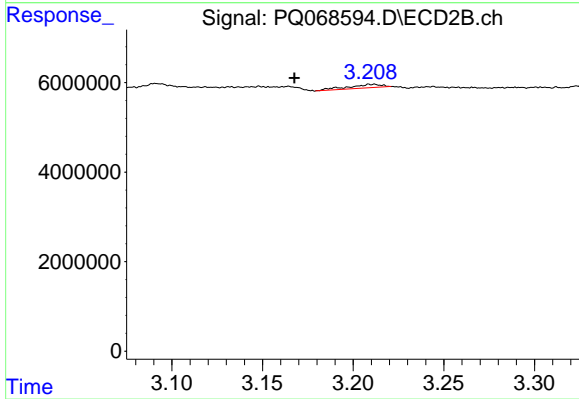
#10 AR-1221-3

R.T.: 3.211 min
 Delta R.T.: 0.043 min
 Response: 944404
 Conc: 4.89 ng/ml



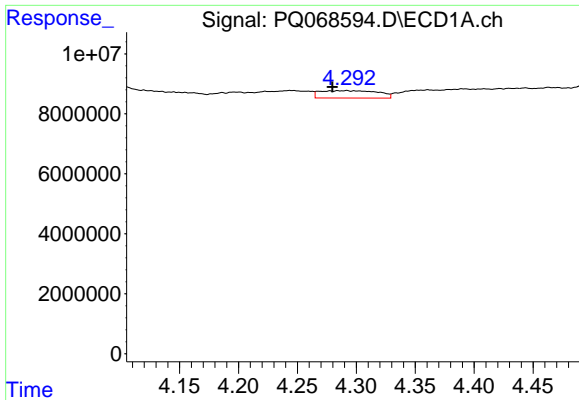
#11 AR-1232-1

R.T.: 3.800 min
 Delta R.T.: 0.013 min
 Response: 963403
 Conc: 5.84 ng/ml



#11 AR-1232-1

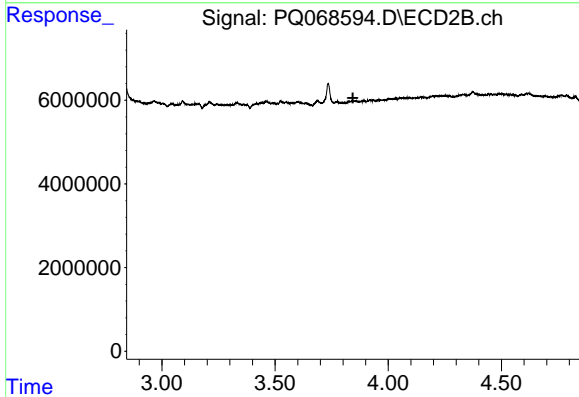
R.T.: 3.211 min
 Delta R.T.: 0.043 min
 Response: 944404
 Conc: 6.21 ng/ml



#12 AR-1232-2

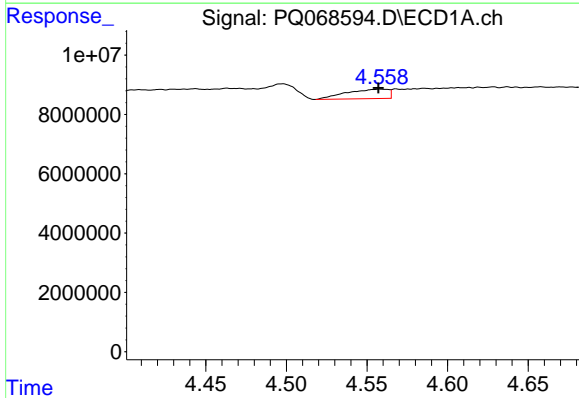
R.T.: 4.292 min
 Delta R.T.: 0.012 min
 Response: 8379117
 Conc: 92.25 ng/ml

Instrument :
 ECD_Q
 ClientSampleId :
 C0AN7



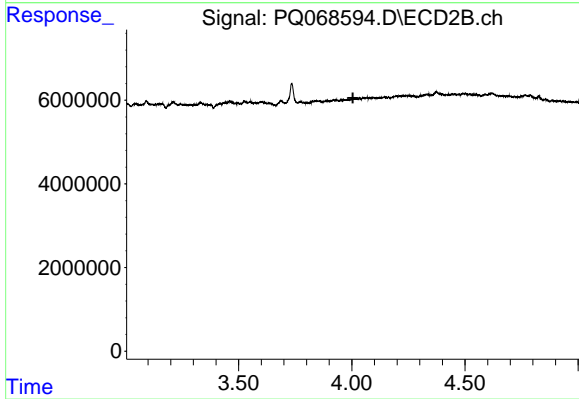
#12 AR-1232-2

R.T.: 0.000 min
 Exp R.T. : 3.844 min
 Response: 0
 Conc: N.D.



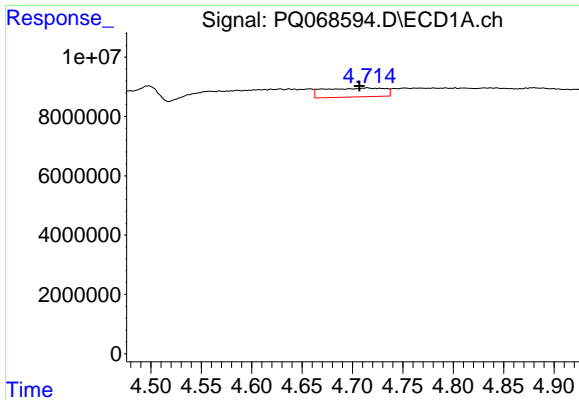
#13 AR-1232-3

R.T.: 4.559 min
 Delta R.T.: 0.002 min
 Response: 5793243
 Conc: 34.26 ng/ml



#13 AR-1232-3

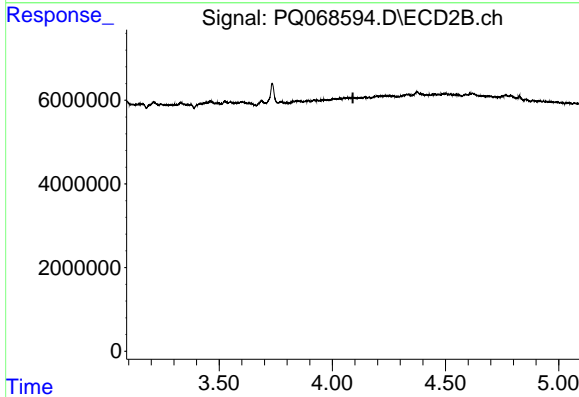
R.T.: 0.000 min
 Exp R.T. : 4.005 min
 Response: 0
 Conc: N.D.



#14 AR-1232-4

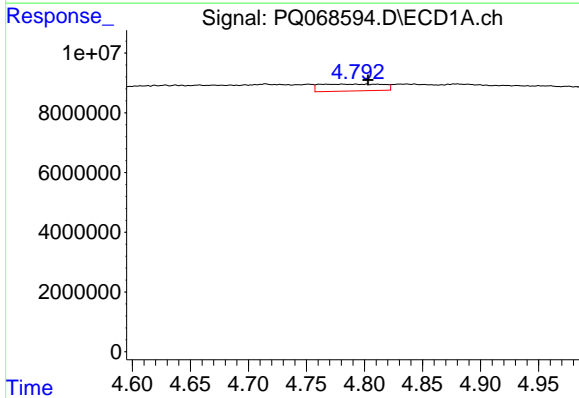
R.T.: 4.715 min
 Delta R.T.: 0.008 min
 Response: 12469093
 Conc: 144.32 ng/ml

Instrument :
 ECD_Q
 ClientSampleId :
 C0AN7



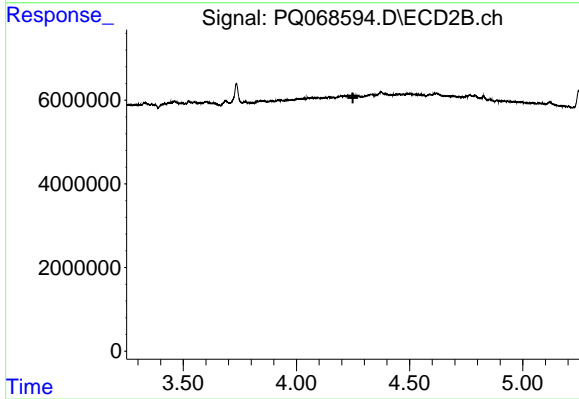
#14 AR-1232-4

R.T.: 0.000 min
 Exp R.T. : 4.091 min
 Response: 0
 Conc: N.D.



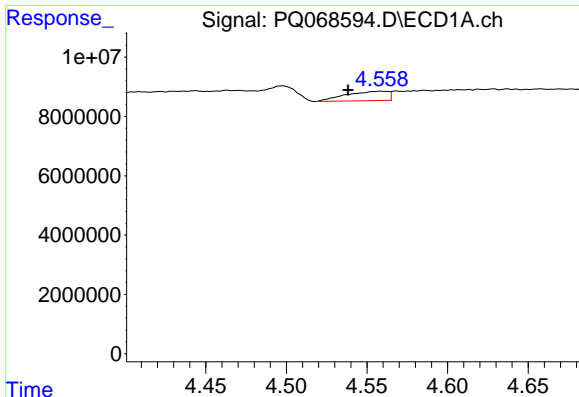
#15 AR-1232-5

R.T.: 4.802 min
 Delta R.T.: -0.001 min
 Response: 8622120
 Conc: 152.68 ng/ml



#15 AR-1232-5

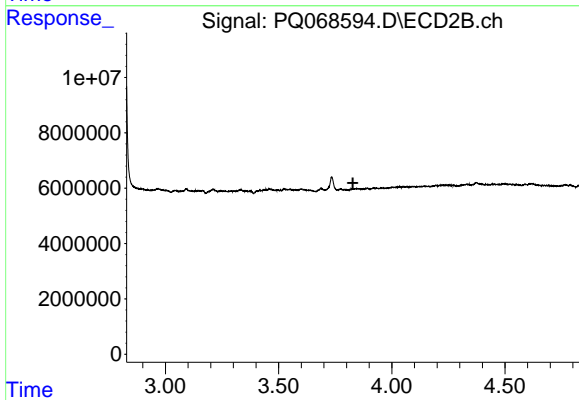
R.T.: 0.000 min
 Exp R.T. : 4.250 min
 Response: 0
 Conc: N.D.



#16 AR-1242-1

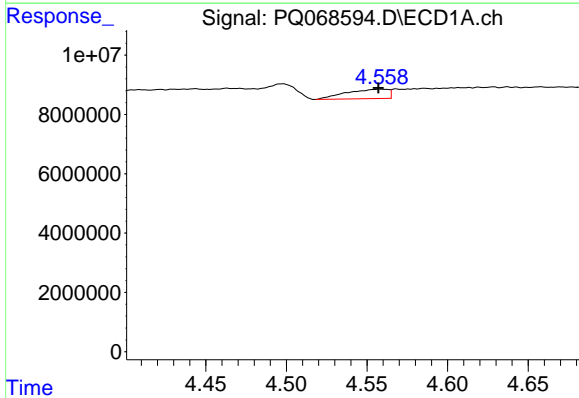
R.T.: 4.559 min
 Delta R.T.: 0.020 min
 Response: 5793243
 Conc: 28.34 ng/ml

Instrument :
 ECD_Q
 ClientSampleId :
 C0AN7



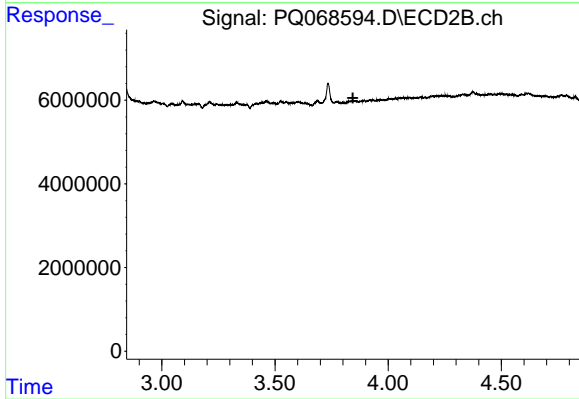
#16 AR-1242-1

R.T.: 0.000 min
 Exp R.T. : 3.828 min
 Response: 0
 Conc: N.D.



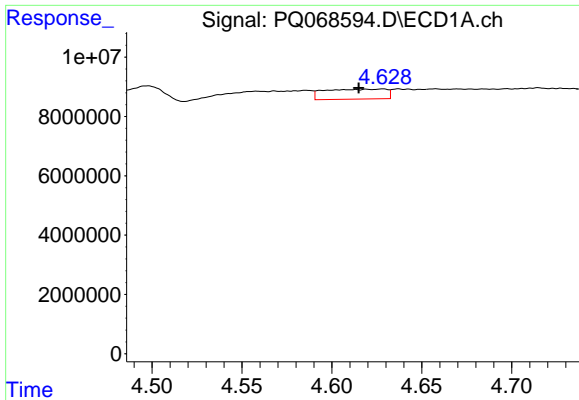
#17 AR-1242-2

R.T.: 4.559 min
 Delta R.T.: 0.001 min
 Response: 5793243
 Conc: 18.51 ng/ml



#17 AR-1242-2

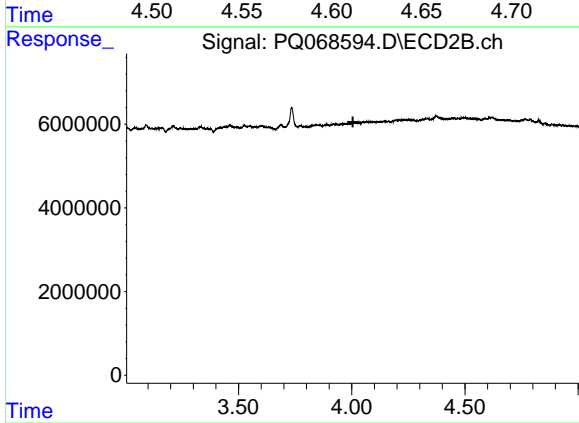
R.T.: 0.000 min
 Exp R.T. : 3.844 min
 Response: 0
 Conc: N.D.



#18 AR-1242-3

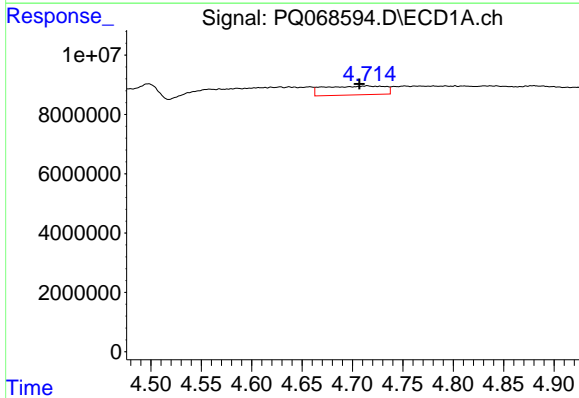
R.T.: 4.628 min
Delta R.T.: 0.013 min
Response: 8004295
Conc: 40.91 ng/ml

Instrument :
ECD_Q
ClientSampleId :
C0AN7



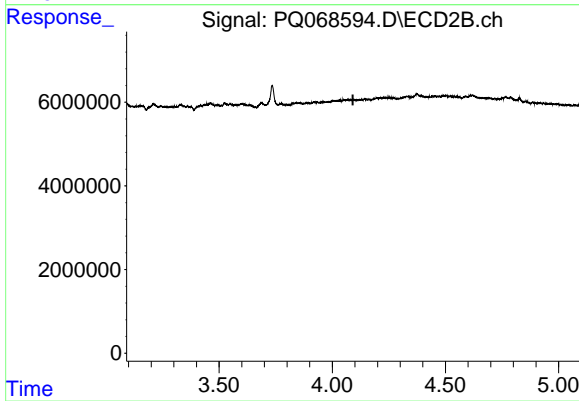
#18 AR-1242-3

R.T.: 0.000 min
Exp R.T. : 4.005 min
Response: 0
Conc: N.D.



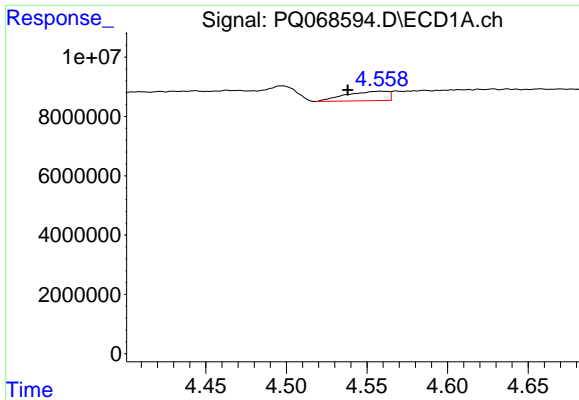
#19 AR-1242-4

R.T.: 4.715 min
Delta R.T.: 0.008 min
Response: 12469093
Conc: 77.15 ng/ml



#19 AR-1242-4

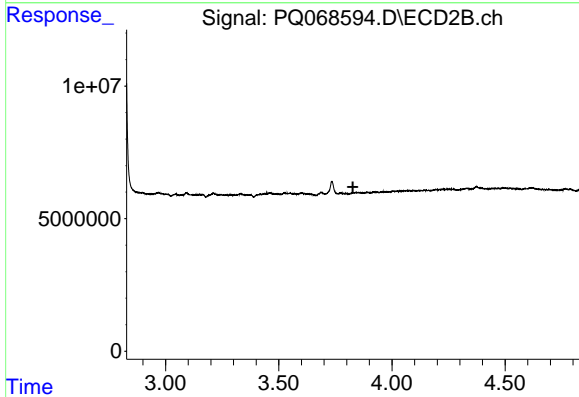
R.T.: 0.000 min
Exp R.T. : 4.091 min
Response: 0
Conc: N.D.



#21 AR-1248-1

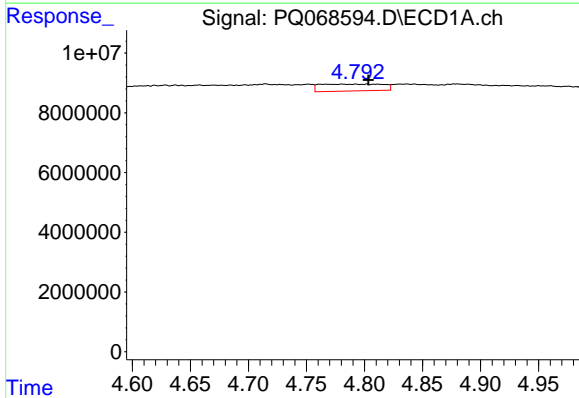
R.T.: 4.559 min
 Delta R.T.: 0.020 min
 Response: 5793243
 Conc: 37.63 ng/ml

Instrument :
 ECD_Q
 ClientSampleId :
 C0AN7



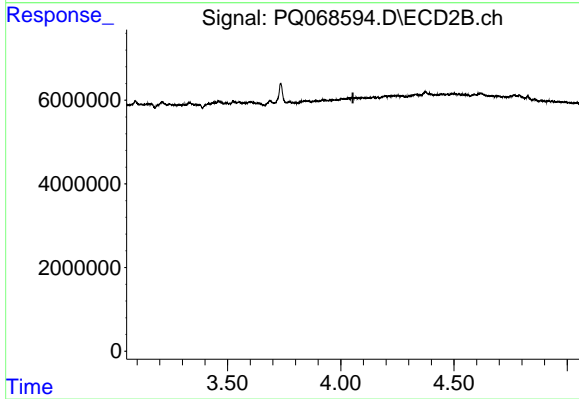
#21 AR-1248-1

R.T.: 0.000 min
 Exp R.T. : 3.828 min
 Response: 0
 Conc: N.D.



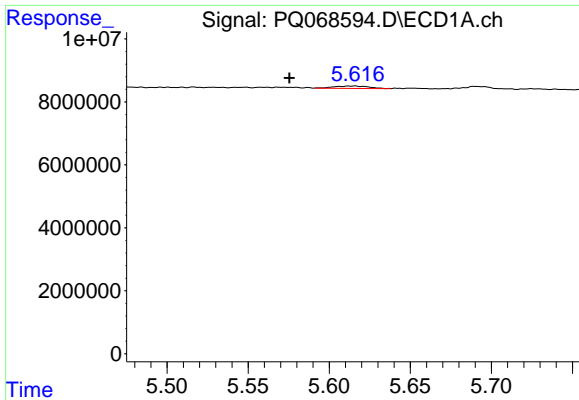
#22 AR-1248-2

R.T.: 4.802 min
 Delta R.T.: -0.001 min
 Response: 8622120
 Conc: 41.03 ng/ml



#22 AR-1248-2

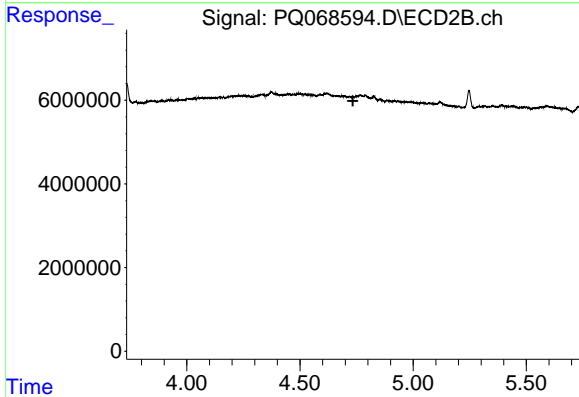
R.T.: 0.000 min
 Exp R.T. : 4.053 min
 Response: 0
 Conc: N.D.



#27 AR-1254-2

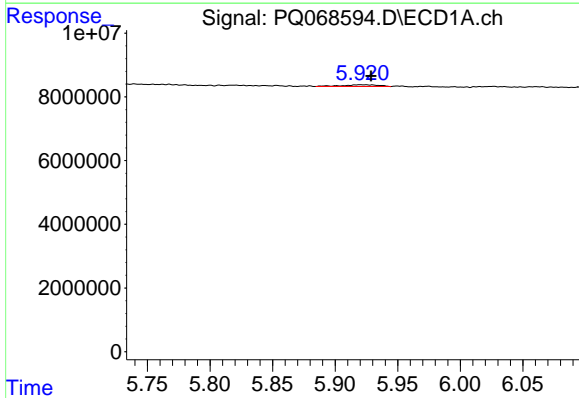
R.T.: 5.616 min
 Delta R.T.: 0.040 min
 Response: 1190082
 Conc: 2.79 ng/ml

Instrument :
 ECD_Q
 ClientSampleId :
 C0AN7



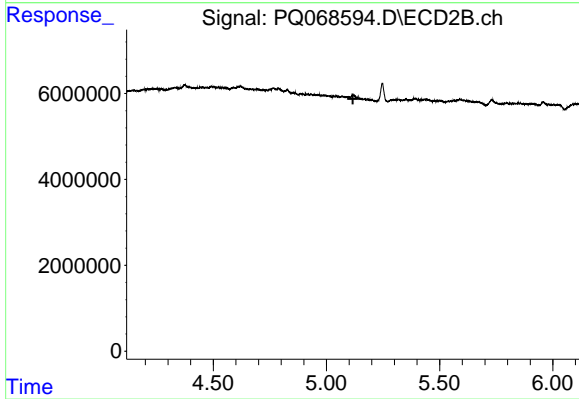
#27 AR-1254-2

R.T.: 0.000 min
 Exp R.T. : 4.734 min
 Response: 0
 Conc: N.D.



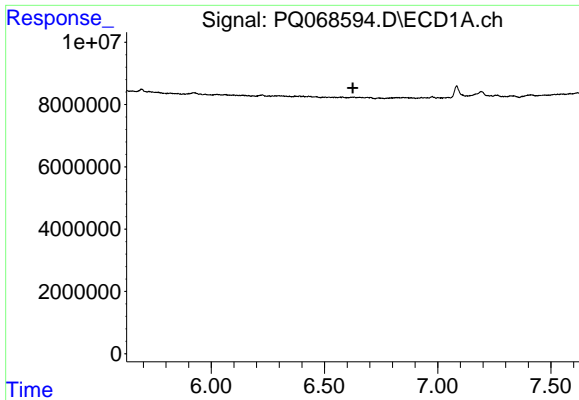
#28 AR-1254-3

R.T.: 5.920 min
 Delta R.T.: -0.008 min
 Response: 1101303
 Conc: 2.45 ng/ml



#28 AR-1254-3

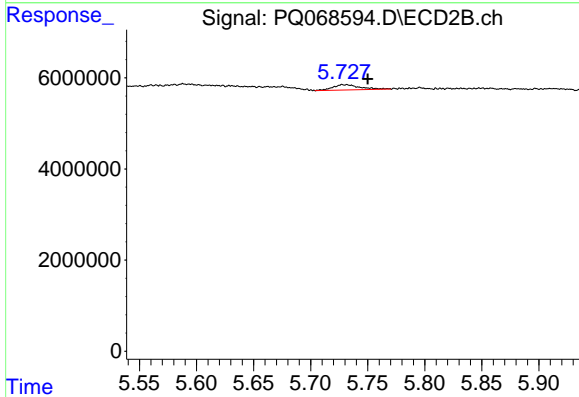
R.T.: 0.000 min
 Exp R.T. : 5.117 min
 Response: 0
 Conc: N.D.



#30 AR-1254-5

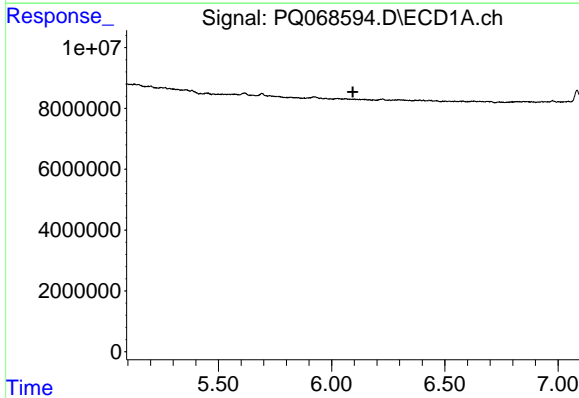
R.T.: 0.000 min
 Exp R.T. : 6.625 min
 Response: 0
 Conc: N.D.

Instrument :
 ECD_Q
 ClientSampleId :
 C0AN7



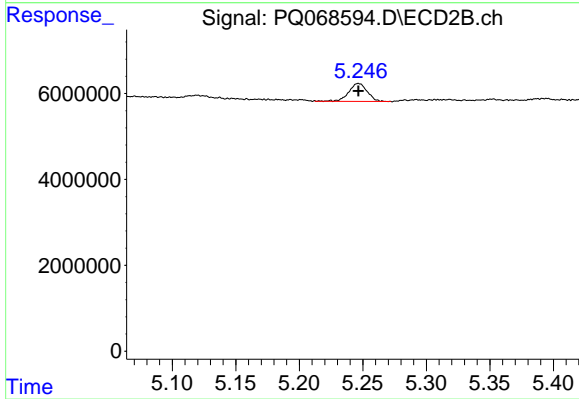
#30 AR-1254-5

R.T.: 5.728 min
 Delta R.T.: -0.022 min
 Response: 1907789
 Conc: 3.92 ng/ml



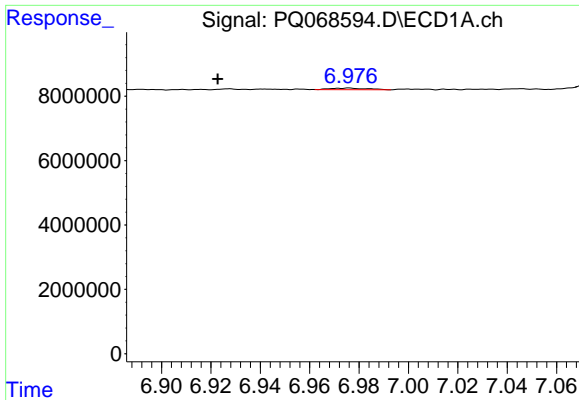
#31 AR-1260-1

R.T.: 0.000 min
 Exp R.T. : 6.093 min
 Response: 0
 Conc: N.D.



#31 AR-1260-1

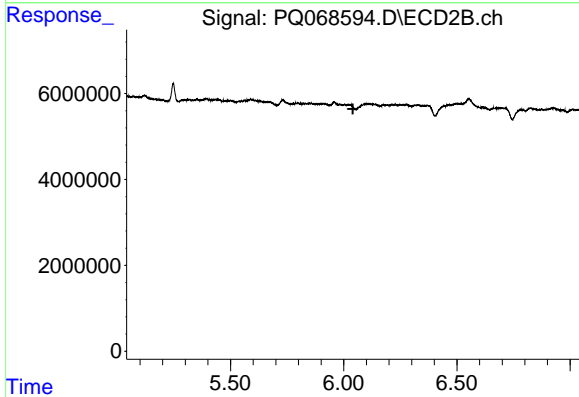
R.T.: 5.247 min
 Delta R.T.: 0.000 min
 Response: 4226422
 Conc: 11.62 ng/ml



#34 AR-1260-4

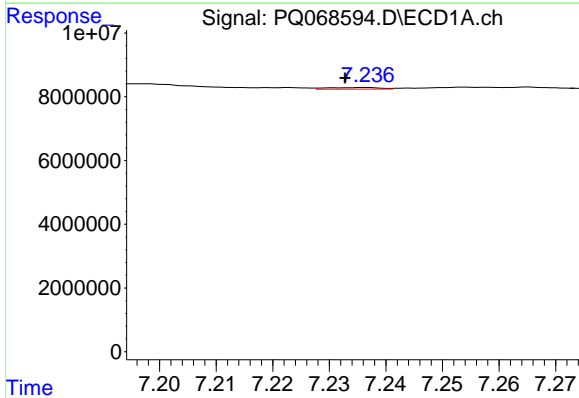
R.T.: 6.976 min
 Delta R.T.: 0.053 min
 Response: 543806
 Conc: 1.78 ng/ml

Instrument :
 ECD_Q
 ClientSampleId :
 C0AN7



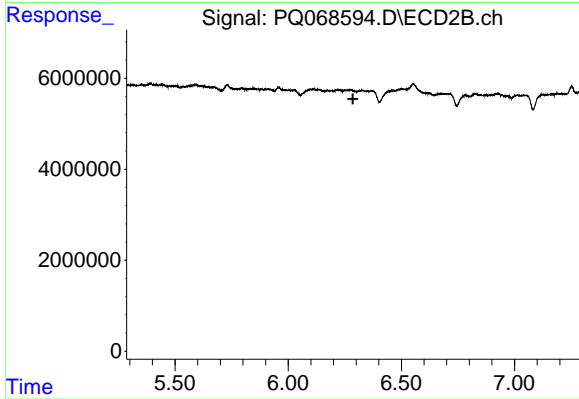
#34 AR-1260-4

R.T.: 0.000 min
 Exp R.T. : 6.040 min
 Response: 0
 Conc: N.D.



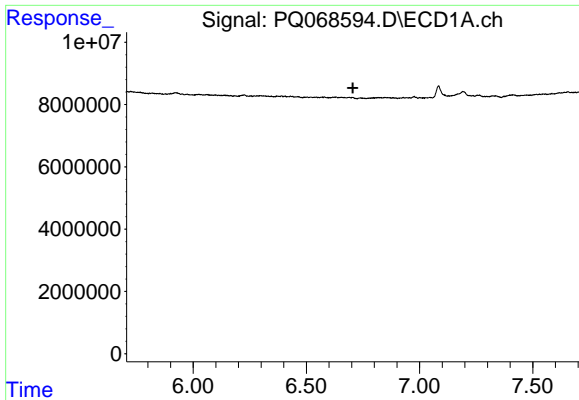
#35 AR-1260-5

R.T.: 7.236 min
 Delta R.T.: 0.003 min
 Response: 325705
 Conc: 0.56 ng/ml



#35 AR-1260-5

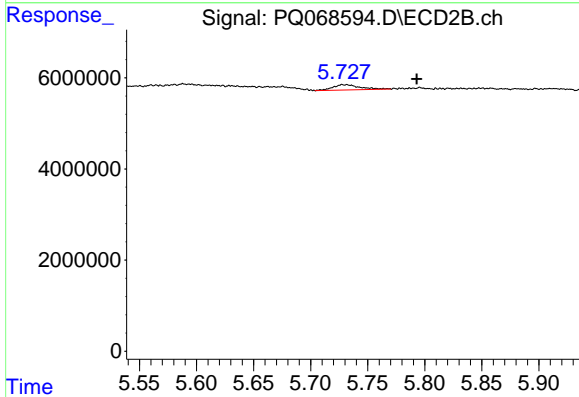
R.T.: 0.000 min
 Exp R.T. : 6.286 min
 Response: 0
 Conc: N.D.



#36 AR-1262-1

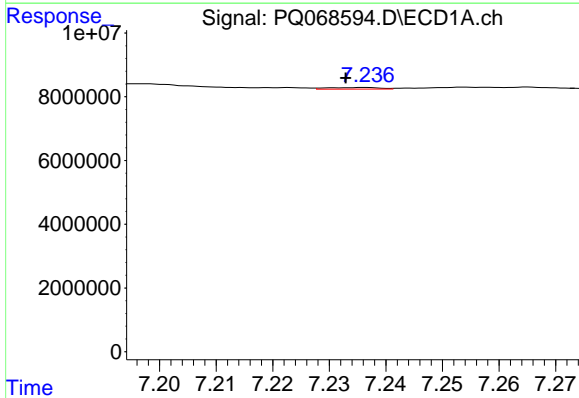
R.T.: 0.000 min
 Exp R.T.: 6.705 min
 Response: 0
 Conc: N.D.

Instrument :
 ECD_Q
 ClientSampleId :
 C0AN7



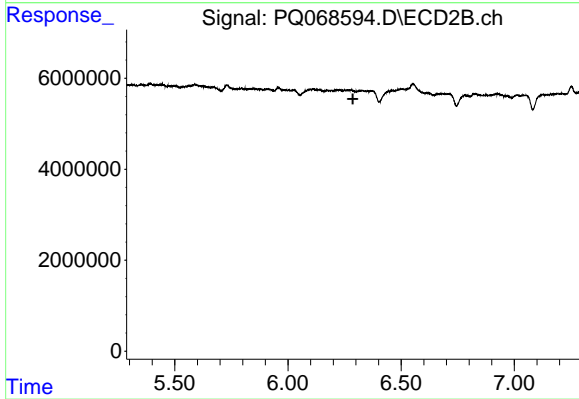
#36 AR-1262-1

R.T.: 5.728 min
 Delta R.T.: -0.065 min
 Response: 1907789
 Conc: 3.71 ng/ml



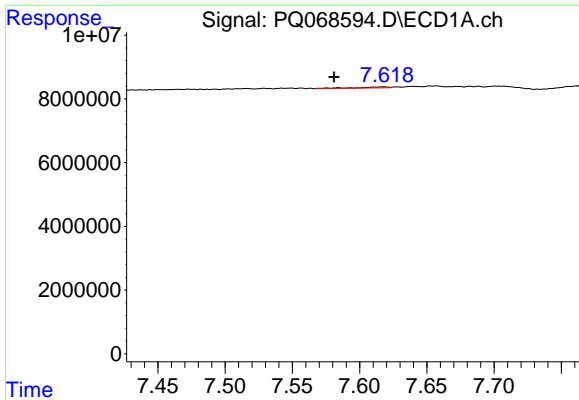
#37 AR-1262-2

R.T.: 7.236 min
 Delta R.T.: 0.003 min
 Response: 325705
 Conc: 0.48 ng/ml



#37 AR-1262-2

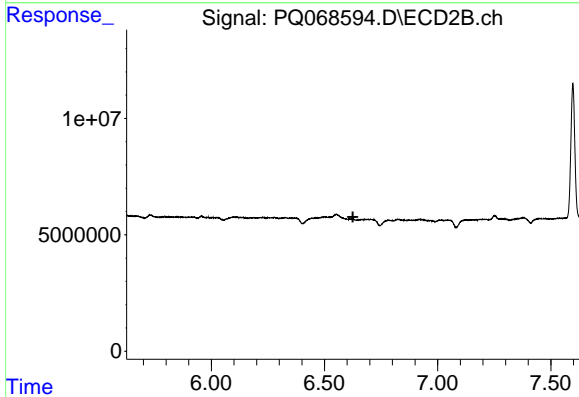
R.T.: 0.000 min
 Exp R.T.: 6.287 min
 Response: 0
 Conc: N.D.



#39 AR-1262-4

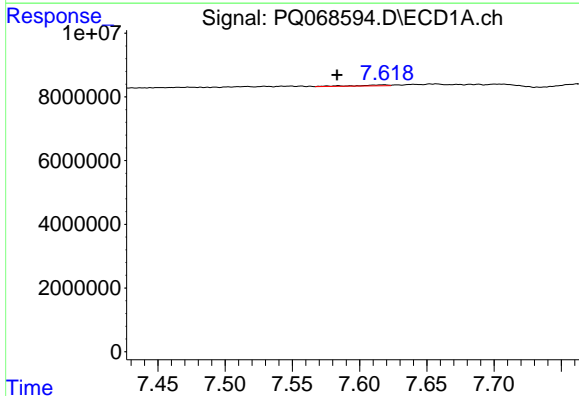
R.T.: 7.618 min
 Delta R.T.: 0.037 min
 Response: 500517
 Conc: 1.46 ng/ml

Instrument :
 ECD_Q
 ClientSampleId :
 C0AN7



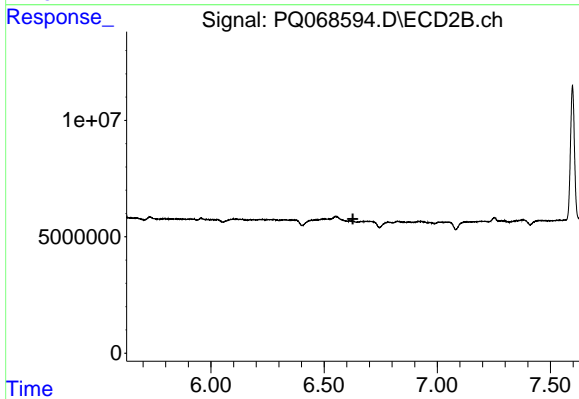
#39 AR-1262-4

R.T.: 0.000 min
 Exp R.T. : 6.625 min
 Response: 0
 Conc: N.D.



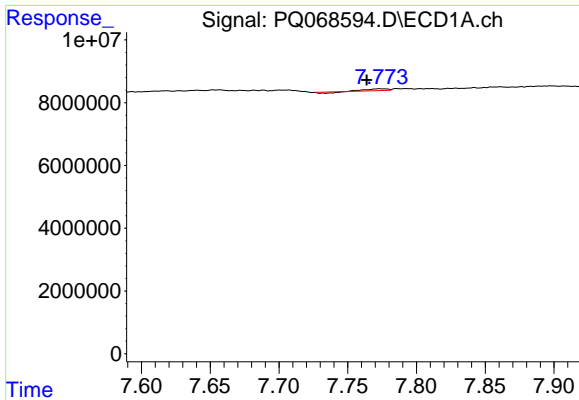
#42 AR-1268-2

R.T.: 7.618 min
 Delta R.T.: 0.035 min
 Response: 500517
 Conc: 0.70 ng/ml



#42 AR-1268-2

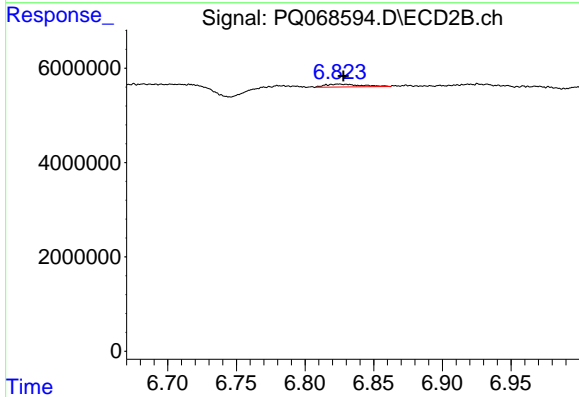
R.T.: 0.000 min
 Exp R.T. : 6.627 min
 Response: 0
 Conc: N.D.



#43 AR-1268-3

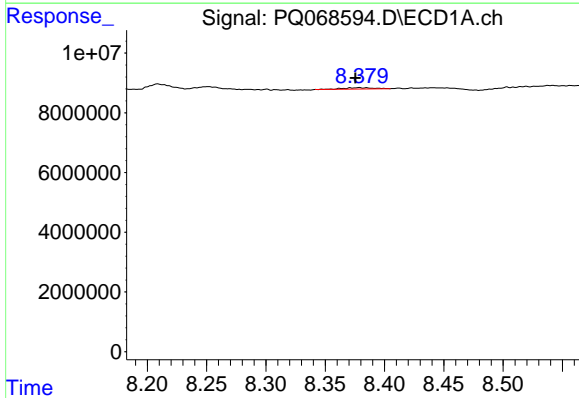
R.T.: 7.774 min
 Delta R.T.: 0.010 min
 Response: 393115
 Conc: 0.68 ng/ml

Instrument :
 ECD_Q
 ClientSampleId :
 C0AN7



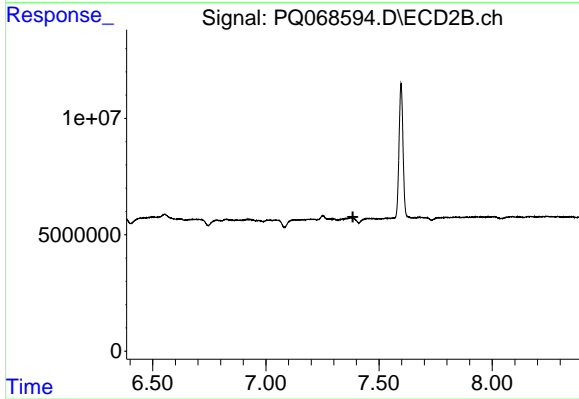
#43 AR-1268-3

R.T.: 6.825 min
 Delta R.T.: -0.003 min
 Response: 1085692
 Conc: 1.33 ng/ml



#45 AR-1268-5

R.T.: 8.379 min
 Delta R.T.: 0.003 min
 Response: 819752
 Conc: 0.50 ng/ml



#45 AR-1268-5

R.T.: 0.000 min
 Exp R.T.: 7.384 min
 Response: 0
 Conc: N.D.